

VISUAL IMPACT ASSESSMENT HORSLEY PARK INDUSTRIAL DEVELOPMENT

FOR CSR BUILDING PRODUCTS LIMITED

17 MARCH 2015

ARCHITECTURE

IMAGERY

INTERIOR DESIGN

URBAN DESIGN

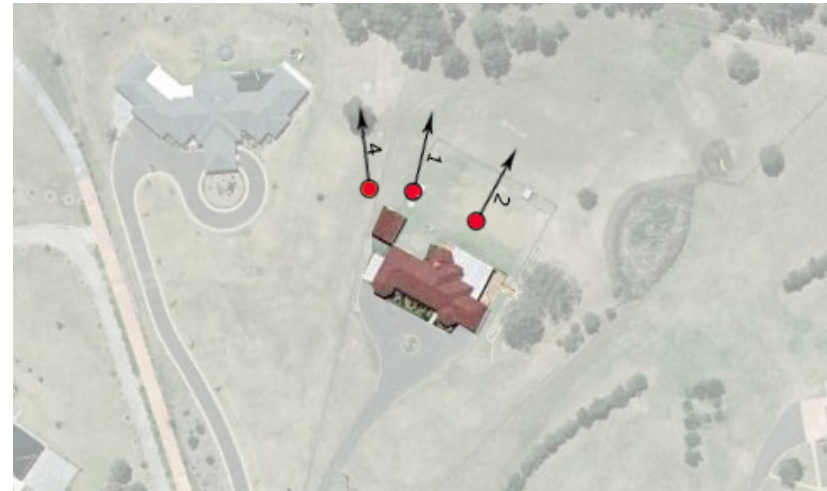
LANDSCAPE

GROUP GSA

1.1.1. PROPERTY 47 - 48 GREENWAY PLACE



Location plan



View points



1 - View point looking north from rear garden



2 - View point looking north from rear garden



3 - View point looking north from driveway



4 - View point looking northwest



5 - View point looking northwest



6 - View point looking north west from driveway

Representation of addition
screen planting to supplement
reconstructed bund

Image of views of
existing vegetation of the
Environmental Conservation
zone

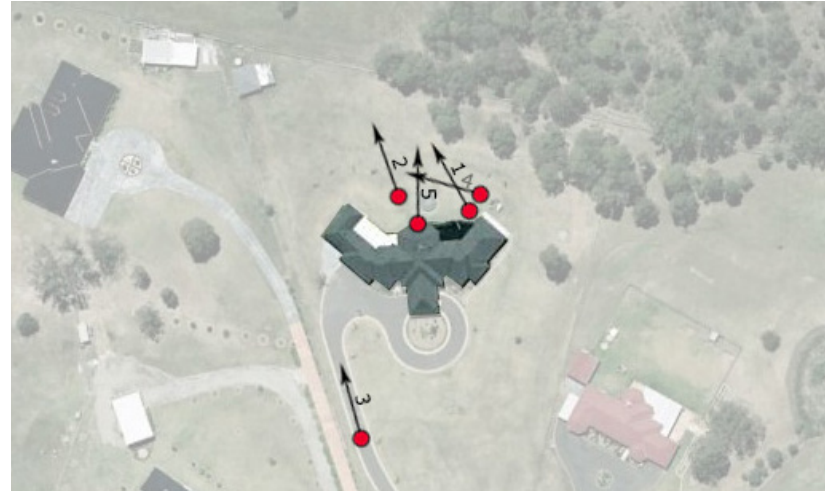


Representation of outlook for outlook area of 47-48 Greenway Place.

1.1.2. PROPERTY 44 - 46 GREENWAY PLACE



Location plan



View points



1 - View point looking north from rear garden area



2 - View point looking north from rear garden area



3 - View point looking north from driveway



4 - View point looking northwest



5 - Panorama view point looking from rear outdoor area.

Representation of addition
screen planting to supplement
reconstructed bund

Image of views of
existing vegetation of the
Environmental Conservation
zone



Representation of outlook for outlook area of 44 -46 Greenway Place.

1.1.3. PROPERTY 41 - 43 GREENWAY PLACE



Location plan



View points



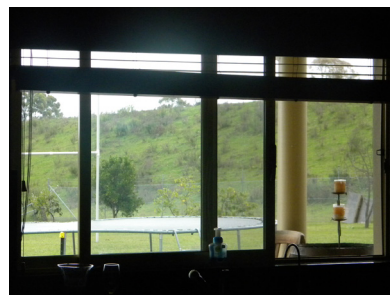
1 - View point looking north from driveway turnaround area



2 - View point looking north front area



3 - View point looking north from western side of house



4 - View point looking north-west from kitchen / living area



5 - View point looking north-west from rear outdoor area.



6 - View point looking north-west from second storey bedroom

Representation of additional
planting looking to the north-
west

Representation of
reconstructed bund, with
supplementary planting
preventing views into the site

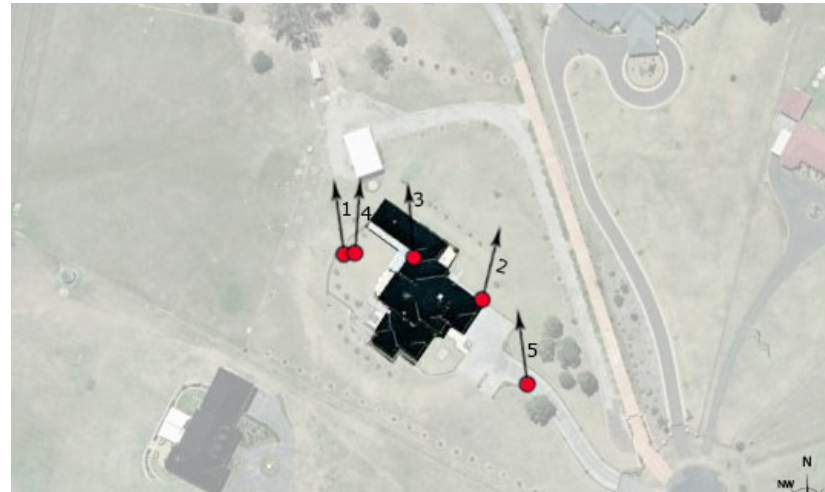


Representation of outlook for outlook area of 41 -43 Greenway Place.

1.1.4. PROPERTY 38 - 40 GREENWAY PLACE



Location plan



View points



1 - View point looking north from pool area



2 - View point looking north from front area



3 - View point looking north-west from second level bedroom.



4 - Panorama view point looking north / north-west from pool area



5 - View point looking north from driveway approach

Representation of addition
planting looking to the north-
west

Representation of
reconstructed bund, with
supplementary planting
preventing views into the site



Representation of outlook for outlook area of 38-40 Greenway Place.

1.1.5. PROPERTY 35 - 37 GREENWAY PLACE



Location plan



View points



1 - View point looking north outdoor area



2 - View point looking north from ground levels living area



3 - View point looking north-west from outdoor area



4 - View point looking north from second level



5 - View point looking north from driveway approach



6 - View point looking north from front garden area

Representation of addition
planting looking to the north-
west

Representation of reconstructed
bund with supplementary
planting and neighbouring
properties preventing views into
the site to the north.

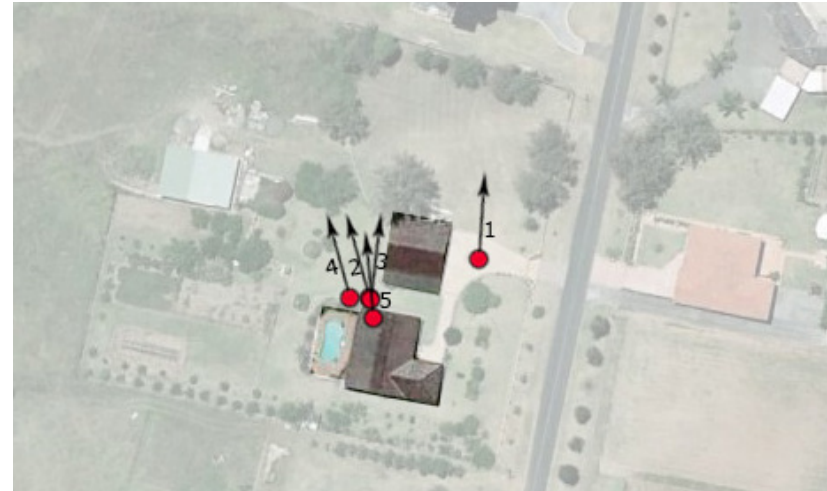


Representation of outlook for outlook area of 35-37 Greenway Place.

1.1.6. PROPERTY 21 GREENWAY PLACE



Location plan



View points



1 - View point looking north from driveway



2 - Panorama view point looking north / north - west from rear garden area



4 - View point looking north - from rear garden



5 - View point looking north - west from rear garden



5 - View point looking north / north - west from second level area

Representation of screen
planting along southern
boundary (and stepped
gabion wall)



Representation of outlook for outlook area of 21 Greenway Place.

SYDNEY

Level 7, 80 William Street
East Sydney NSW
2011 Australia
T +612 9361 4144
F +612 9332 3458
E sydney@groupgsa.com

BRISBANE

Level 2
101 Edward Street
Brisbane QLD
4000 Australia
T +617 3210 2592
F +617 3229 8580
E brisbane@groupgsa.com

MELBOURNE

15 Easey Street
Collingwood VIC
3066 Australia
T +613 9416 5088
F +613 9416 5099
E melbourne@groupgsa.com

GOLD COAST

Level 2, Suite 21
194 Varsity Parade
Varsity Lakes QLD
4227 Australia
M +61 414 267 717
F +617 3229 8580
E goldcoast@groupgsa.com

SHANGHAI

The Foundry, Lane 729 Shaanxi Bei Lu
(near Kangding Rd)
Shanghai 200041, PRChina
T +86 21 5213 6309
E shanghai@groupgsa.com

BEIJING

T +86 136 0123 6599
E jxu@groupgsa.com

SHENZHEN

T +86 138 8070 1330
E ahuang@groupgsa.com

HO CHI MINH

1st Floor, 39 Hai Bà Trưng
Bến Nghé, District 1
Ho Chi Minh City, Vietnam
T +84 8 3827 5385
F +84 8 3827 5386
E HCMC@groupgsa.com

WWW.GROUPGSA.COM
ARN 3990