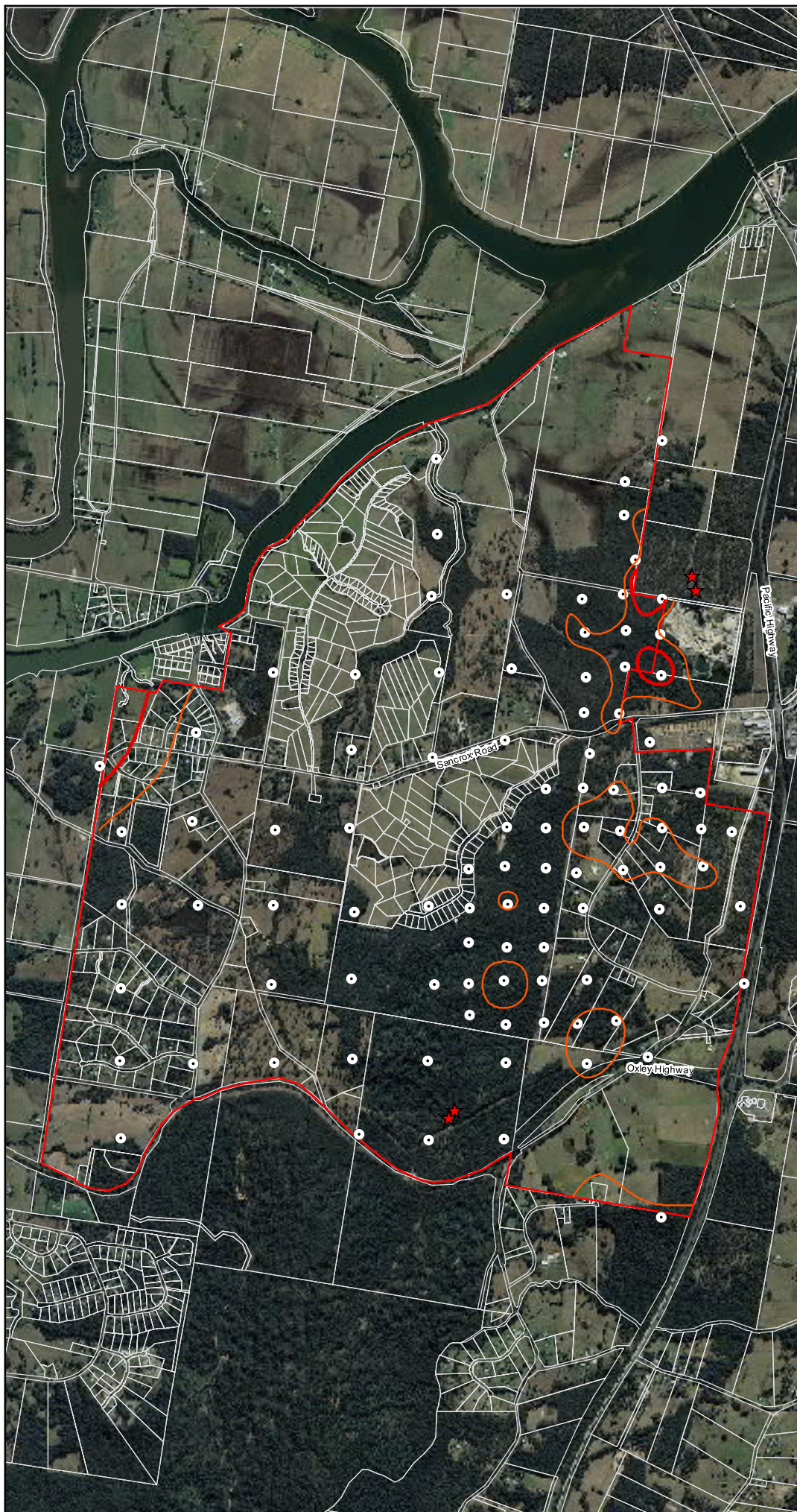


# GREATER SANCROX ECOLOGICAL ASSESSMENT

- Study area
- Property boundary
- SAT sites
- ★ Koala sightings
- Core koala habitat
  - Medium (normal) use
  - High use



Cadastre and imagery supplied  
by Port Macquarie-Hastings Council



0 250 500 1,000 1,500  
Metres

This map remains the property of  
Biolink Pty Ltd and should not be  
reproduced without permission

Cartographic detail may not be  
accurate when used for survey  
purposes



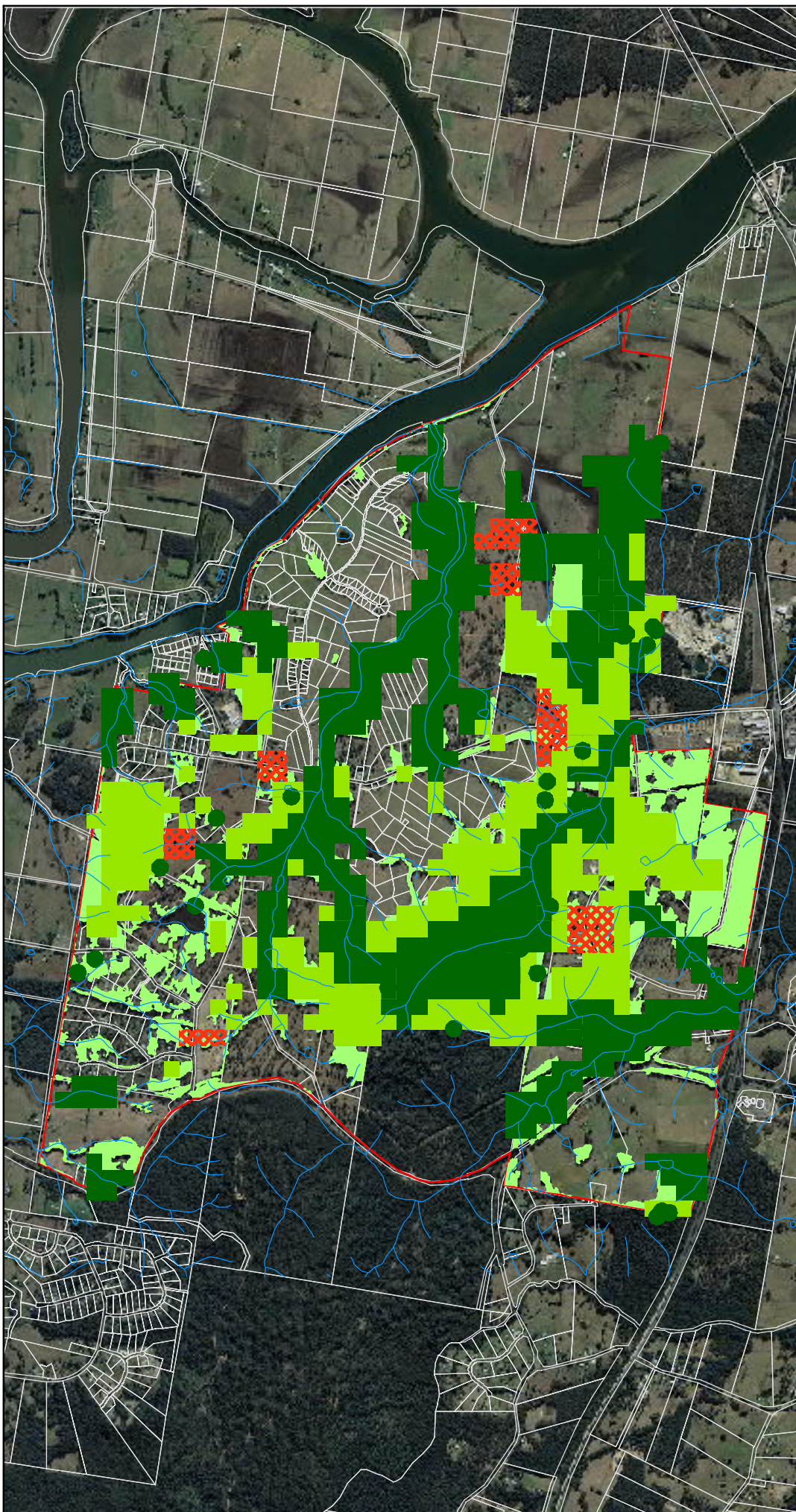
Biolink Ecological Consultants  
PO Box 3196 Uki NSW 2484  
T 02 6679 5593 F 02 6679 5523  
[www.biolink.com.au](http://www.biolink.com.au)

Figure 7 Location of SAT sites, koala sightings and  
distribution of core koala habitat



# GREATER SANCROX ECOLOGICAL ASSESSMENT

- Study area
- Property boundary
- Hydrological network
- Ecological values
  - Irreplaceable
  - Value managed
  - Linkage
  - Directly offsettable



Cadastre and imagery supplied  
by Port Macquarie-Hastings Council








0 250 500 1,000  
Metres

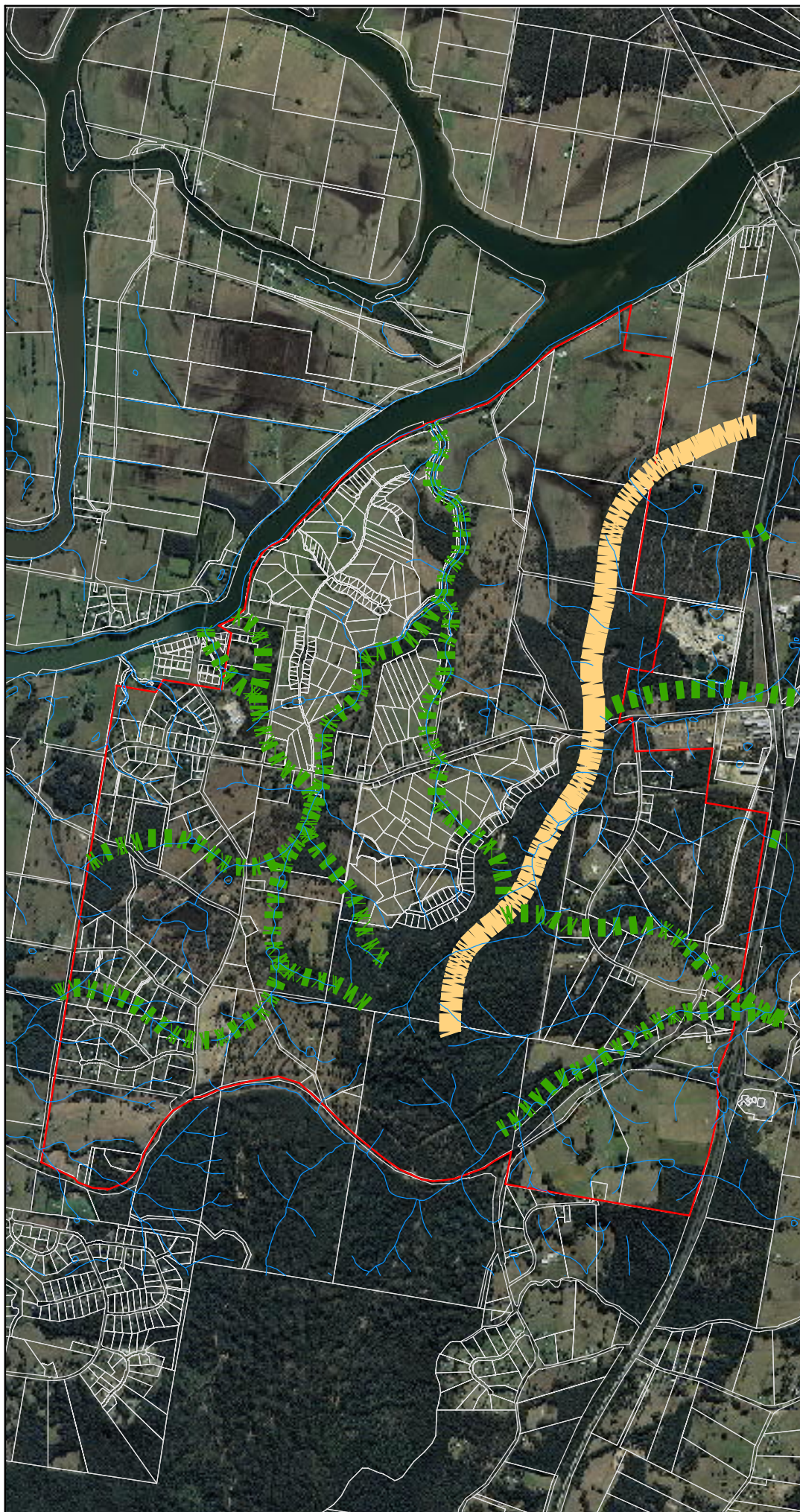
This map remains the property of  
Biolink Pty Ltd and should not be  
reproduced without permission

Cartographic detail may not be  
accurate when used for survey  
purposes



# GREATER SANCROX ECOLOGICAL ASSESSMENT

-  Study area
-  Property boundary
-  Hydrological network
- Linkages
  -  Subregional Corridor
  -  Local linkage



Cadastre and imagery supplied  
by Port Macquarie-Hastings Council



0 250 500 1,000  
Metres

This map remains the property of  
Biolink Pty Ltd and should not be  
reproduced without permission

Cartographic detail may not be  
accurate when used for survey  
purposes