

Figure 4.1: Native vegetation



Biosis Pty Ltd
Albury, Ballarat, Melbourne,
Newcastle, Sydney, Wangaratta & Wollongong

Acknowledgements: Topo (c) NSW Land and Planning Information (2012)
Imagery (c) Arup 2018

Matter: 22156
Date: 24 May 2019,
Checked by: CW, Drawn by: SSK, Last edited by: Iharley
Location: P:\22100s\22156\Mapping\
22156_F4.1-3,5_NativeVeg

0 70 140 210 280 350

Metres

Scale 1:7,000 @ A3

Coordinate System: GDA 1994 MGA Zone 56



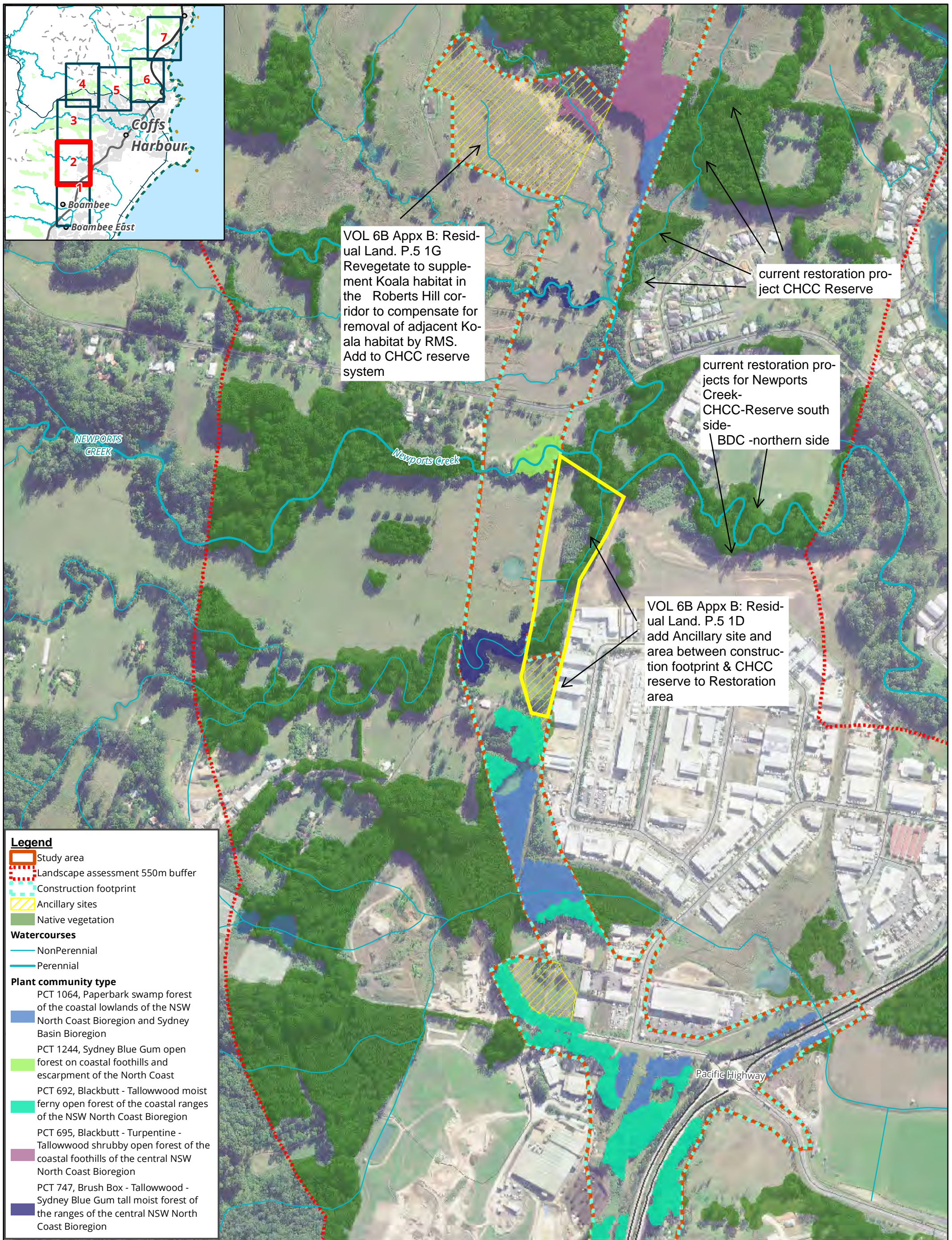


Figure 4.2: Native vegetation



Biosis Pty Ltd
Albury, Ballarat, Melbourne,
Newcastle, Sydney, Wangaratta & Wollongong

Acknowledgements: Topo (c) NSW Land and Planning Information (2012)
Imagery (c) Arup 2018

Matter: 22156
Date: 24 May 2019,
Checked by: CW, Drawn by: SSK, Last edited by: Iharley
Location: P:\22100s\22156\Mapping\22156_F4.1-3,5_NativeVeg

0 70 140 210 280 350

Metres

Scale 1:7,000 @ A3

Coordinate System: GDA 1994 MGA Zone 56



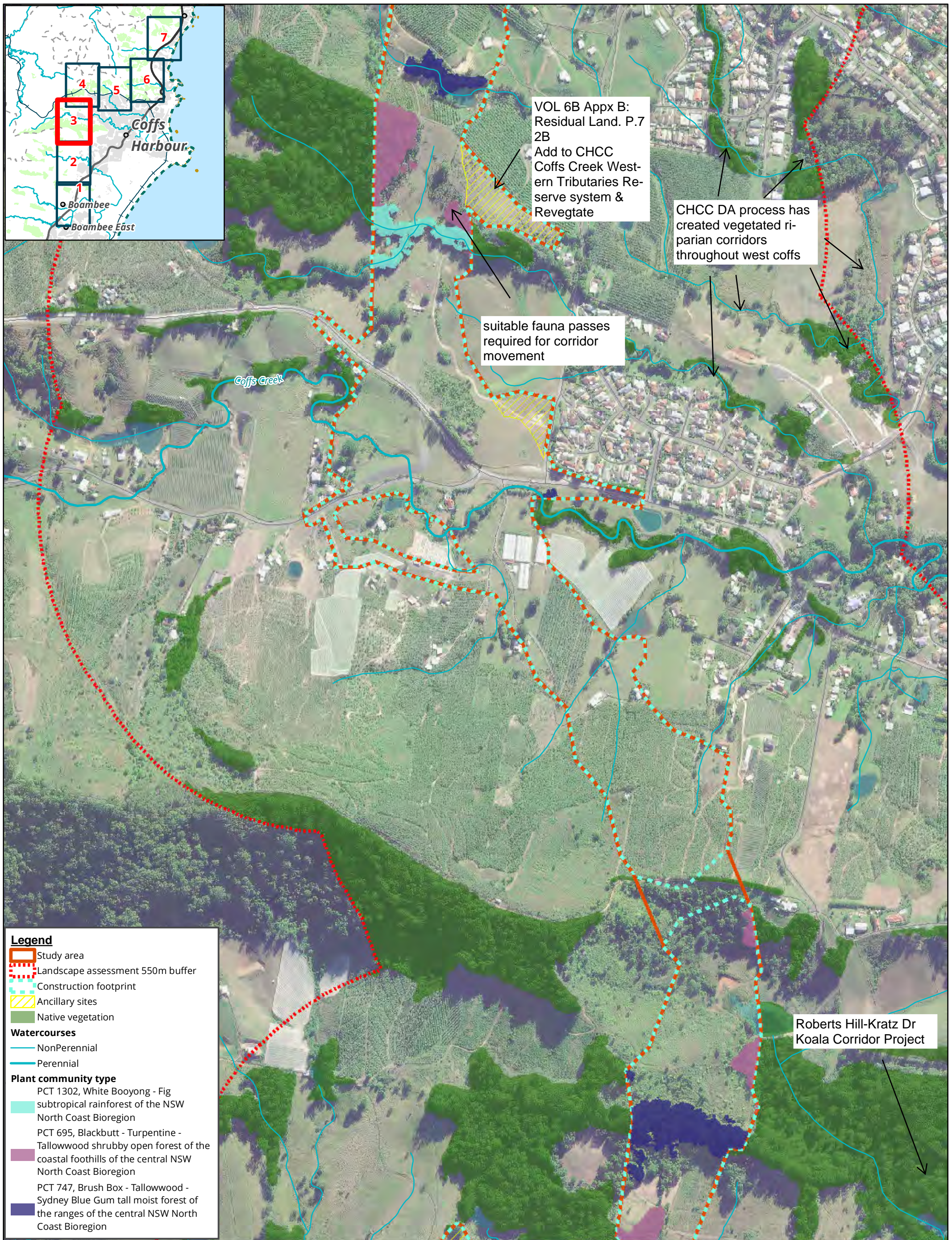


Figure 4.3: Native vegetation



Biosis Pty Ltd
Albury, Ballarat, Melbourne,
Newcastle, Sydney, Wangaratta & Wollongong

Acknowledgements: Topo (c) NSW Land and Planning Information (2012)
Imagery (c) Arup 2018

Matter: 22156
Date: 24 May 2019,
Checked by: CW, Drawn by: SSK, Last edited by: Iharley
Location: P:\22100s\22156\Mapping\22156_F4.1-3,5_NativeVeg

0 70 140 210 280 350
Metres
Scale 1:7,000 @ A3
Coordinate System: GDA 1994 MGA Zone 56



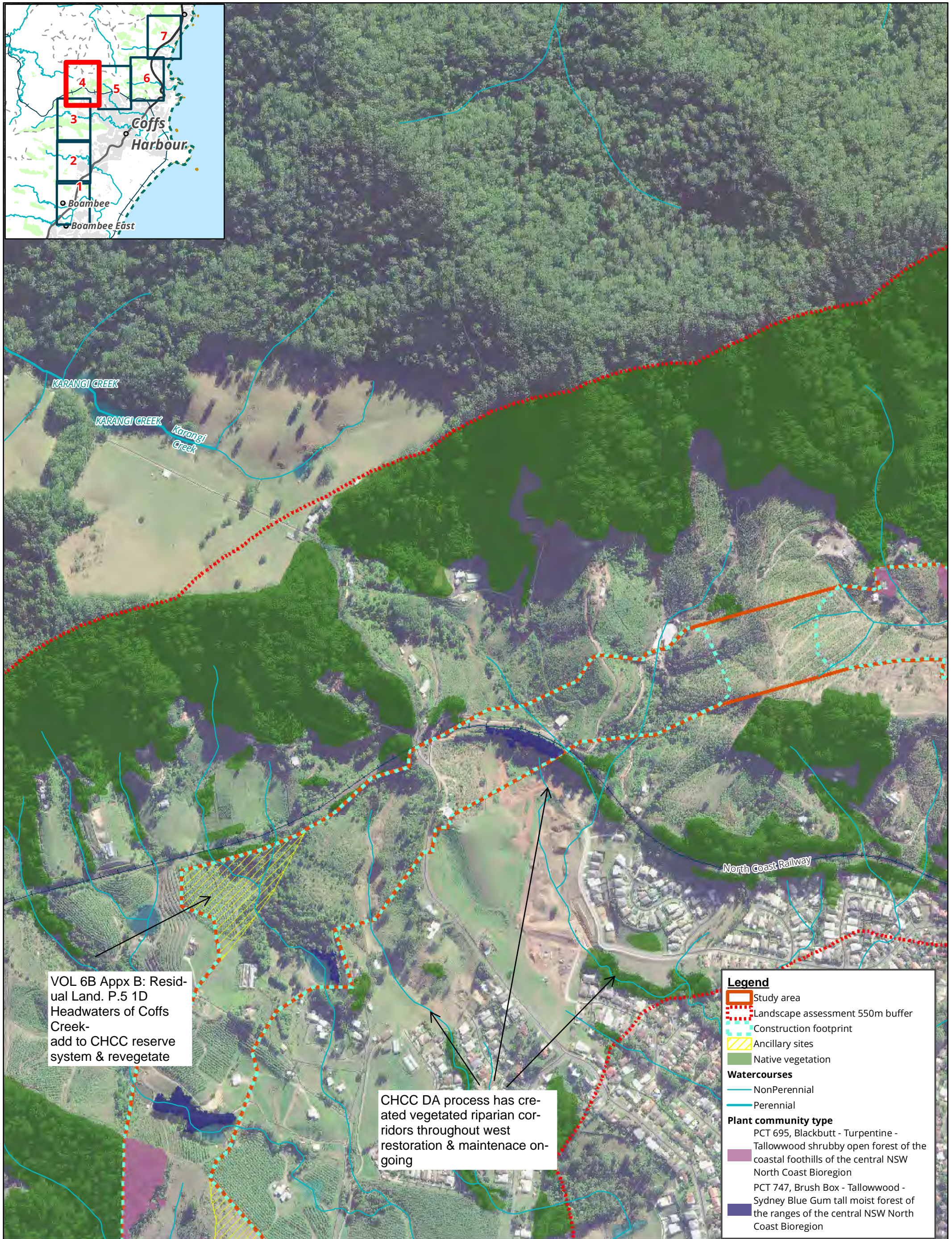


Figure 4.4: Native vegetation



Biosis Pty Ltd
Albury, Ballarat, Melbourne,
Newcastle, Sydney, Wangaratta & Wollongong

Acknowledgements: Topo (c) NSW Land and Planning Information (2012)
Imagery (c) Arup 2018

Matter: 22156
Date: 24 May 2019,
Checked by: SPL, Drawn by: GD, Last edited by: Iharley
Location: P:\22100s\22156\Mapping\22156_F4.4,6-7_NativeVeg

0 70 140 210 280 350
Metres

Scale 1:7,000 @ A3
Coordinate System: GDA 1994 MGA Zone 56



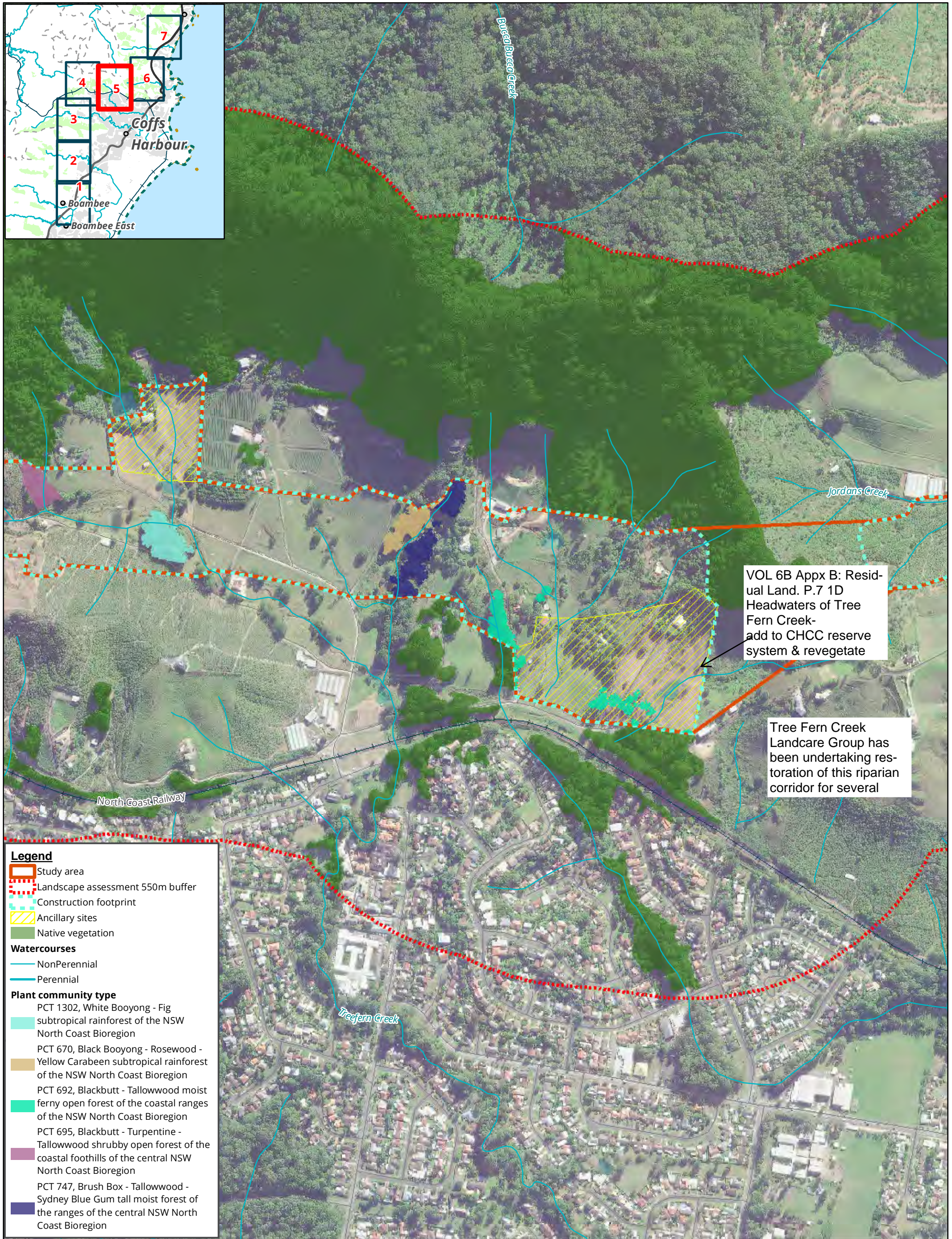


Figure 4.5: Native vegetation



Biosis Pty Ltd
Albury, Ballarat, Melbourne,
Newcastle, Sydney, Wangaratta & Wollongong

Acknowledgements: Topo (c) NSW Land and Planning Information (2012)
Imagery (c) Arup 2018

Matter: 22156
Date: 24 May 2019,
Checked by: CW, Drawn by: SSK, Last edited by: Iharley
Location: P:\22100s\22156\Mapping\
22156_F4.1-3,5_NativeVeg

0 70 140 210 280 350

Metres

Scale 1:7,000 @ A3

Coordinate System: GDA 1994 MGA Zone 56



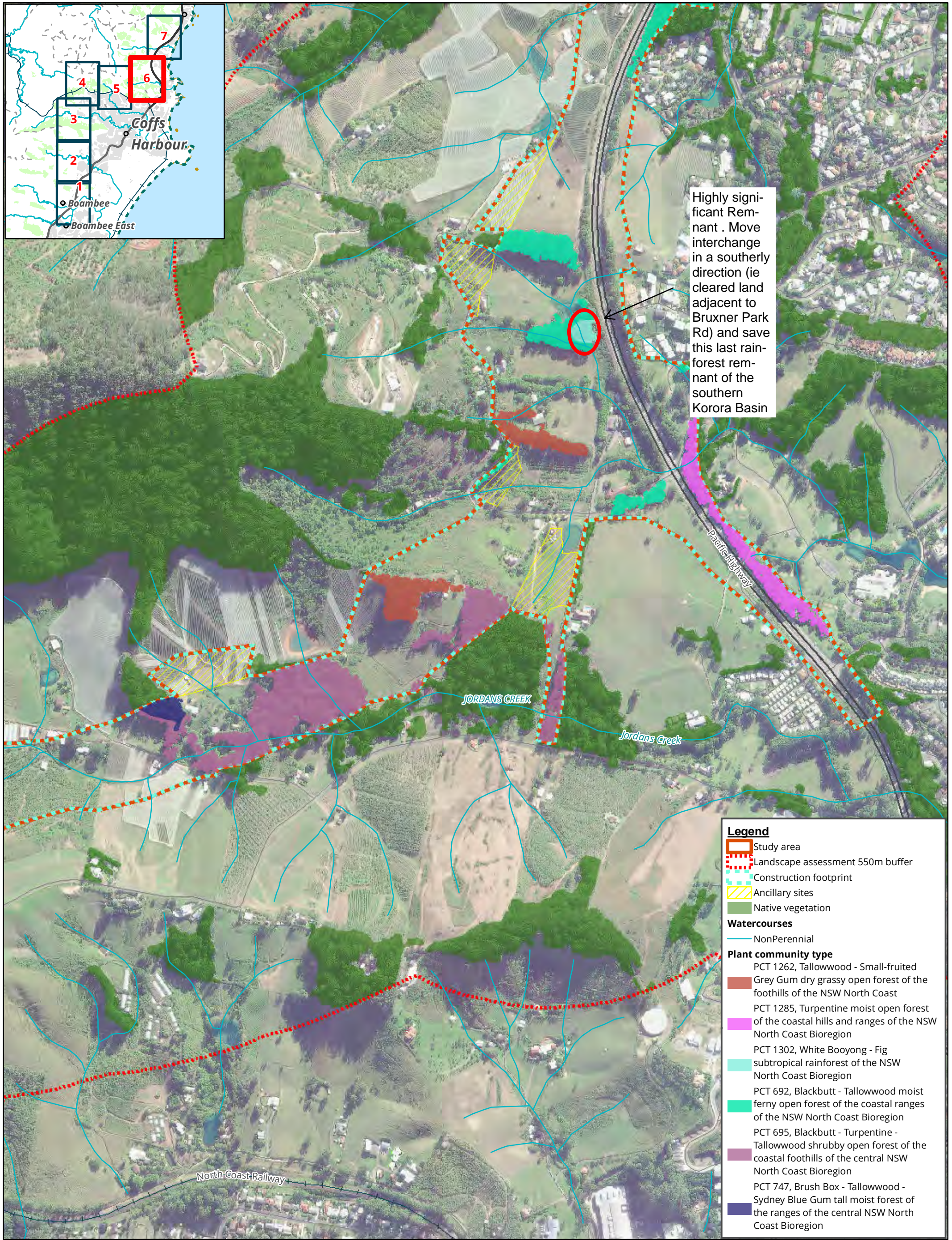


Figure 4.6: Native vegetation



Biosis Pty Ltd
Albury, Ballarat, Melbourne,
Newcastle, Sydney, Wangaratta & Wollongong

Acknowledgements: Topo (c) NSW Land and Planning Information (2012)
Imagery (c) Arup 2018

Matter: 22156
Date: 24 May 2019,
Checked by: SPL, Drawn by: GD, Last edited by: Iharley
Location: P:\22100s\22156\Mapping\
22156_F4.4,6-7_NativeVeg

0 70 140 210 280 350

Metres

Scale 1:7,000 @ A3

Coordinate System: GDA 1994 MGA Zone 56



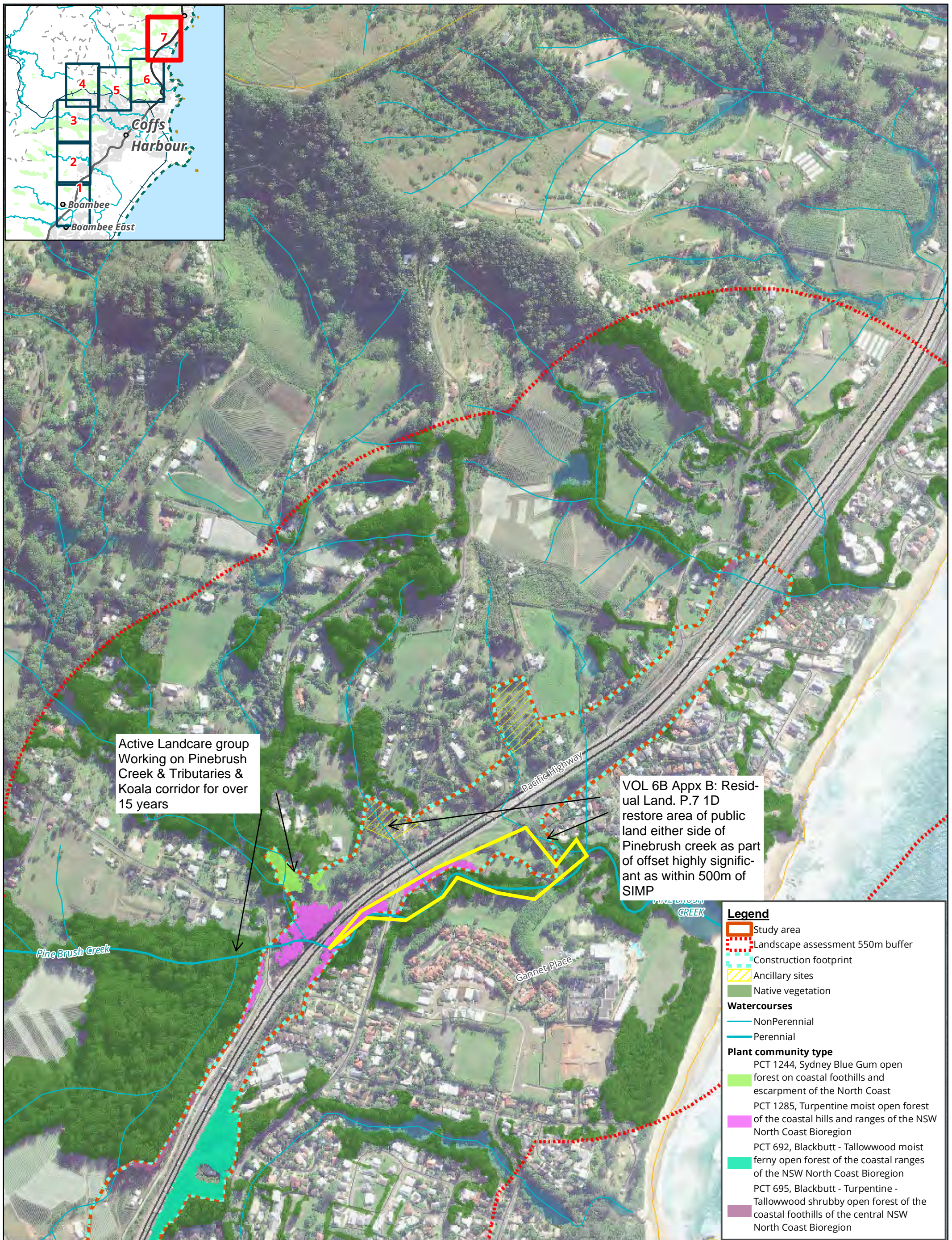
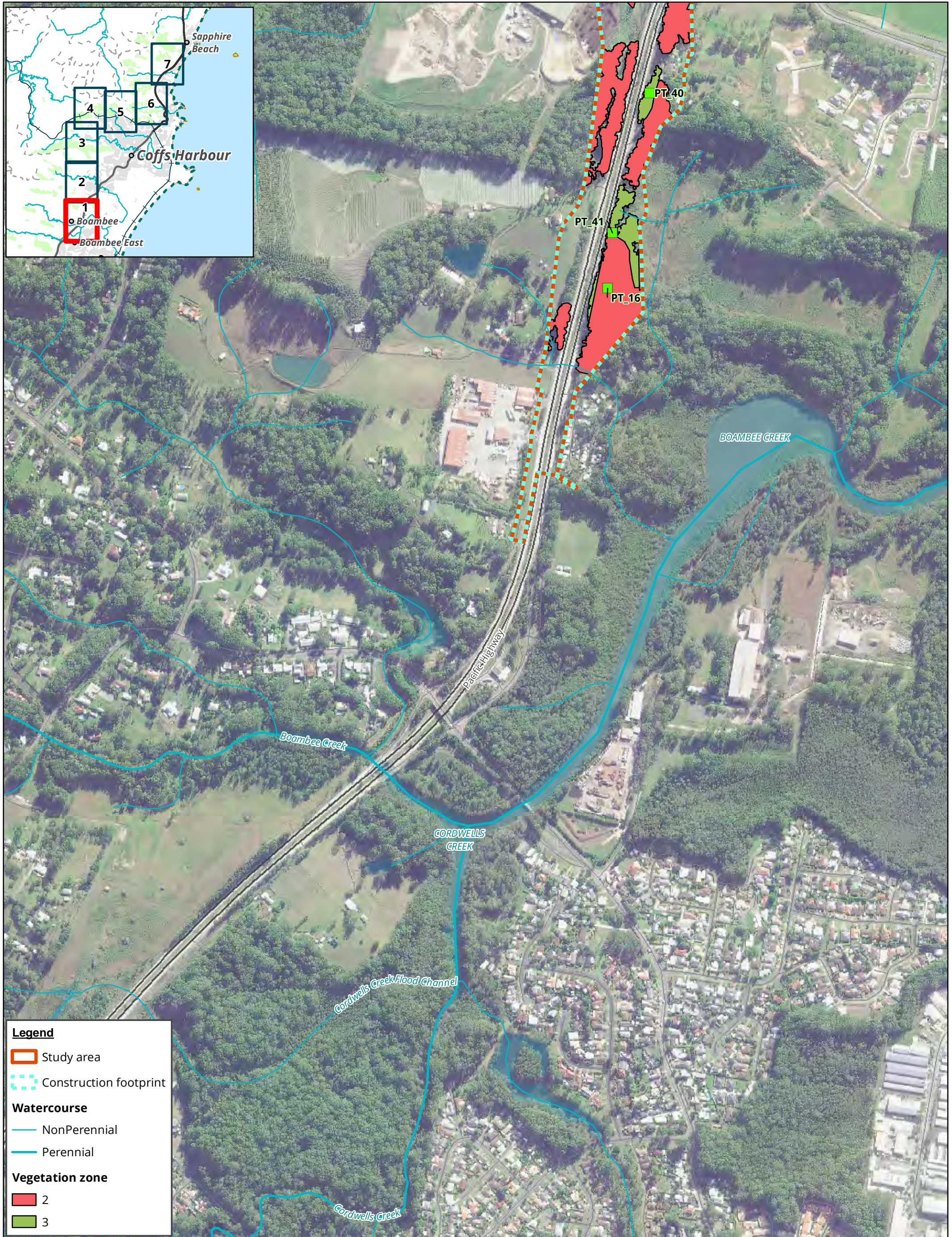


Figure 4.7: Native vegetation



Legend

Study area

Construction footprint

Watercourse

NonPerennial

Perennial

Vegetation zone

2

3

Figure 5.1: Vegetation zones

biosis

Biosis Pty Ltd

Albury, Ballarat, Melbourne,
Newcastle, Sydney, Wangaratta & Wollongong

Acknowledgements: Topo (c) NSW Land and Planning Information (2012)
Imagery (c) Arup 2018

Matter: 22156
Date: 24 May 2019,
Checked by: CW, Drawn by: SSK, Last edited by: Iharley
Location: P:\22100s\22156\Mapping\
22156_F5.1-3,5_VegZones

0 60 120 180 240 300

Metres

Scale 1:7,000 @ A3

Coordinate System: GDA 1994 MGA Zone 56