



Department of Planning, Industry and Environment  
4 Parramatta Square  
12 Darcy Street  
Parramatta NSW 2150

5 May 2022

Dear Sir/Madam,

**RE: SSI-22338205 Kurri Kurri Lateral Pipeline Project Aurizon Response**

We refer to SSI-22338205 Kurri Kurri Lateral Pipeline Project (**the Project**). The proposed underground gas transmission pipeline component of the Project bisects the Aurizon Operations Ltd (**Aurizon**) owned South Maitland Railways (**SMR**) at KP 16.9 as per the Preliminary Pipeline Alignment for Construction (APA Group, 03/06/21) figure included as Attachment A.

Aurizon acknowledges that APA Group commenced preliminary consultation with Aurizon on the proposed pipeline crossing on the 27 April 2022. Consultation entailed the following:

- Provision of Standard Drawing: Railway Crossing Bored and Cased (**the Drawing**).
- Request for feedback on the Drawing and any other requirements Aurizon may require.
- Request for clarification on the Aurizon approval process for crossing of the rail infrastructure inclusive of timelines.

Aurizon requests that ongoing consultation regarding engineering requirements for the required pipeline under bore continue. The objective of the consultation would be to agree upon engineering specifications to ensure the protection of the Project infrastructure and that financial or operational feasibility of future development of SMR is not impacted. Agreed upon engineering specifications would need to be to Aurizon's satisfaction.

Aurizon completed construction of the Hexham Train Support Facility (**TSF**) in 2013. The TSF is bisected by the Jemena gas pipeline which has provided Aurizon with unique insights and experience in the construction, maintenance and operation of a rail facility bisected by a major gas pipeline.

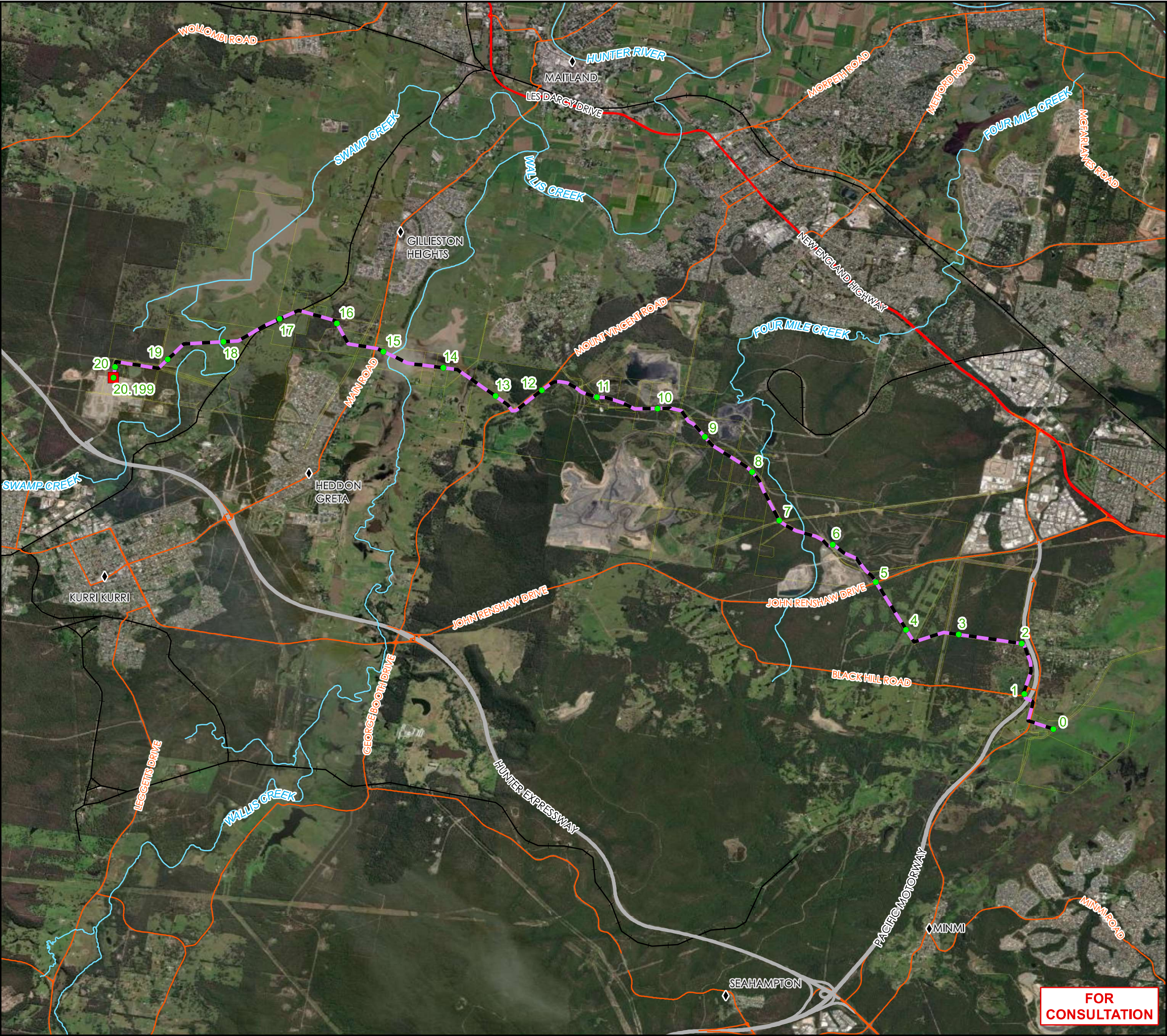
If you have any queries regarding the above please feel free to contact me on the details provided below.


A handwritten signature in blue ink, appearing to read "Harry Egan", with a checkmark-like flourish at the end.

Aurizon  
Senior Adviser Environment  
Safety, Health and Environment  
Phone: 07 3019 1087  
Mobile: 0438 136 697  
Harry.Egan@aurizon.com.au

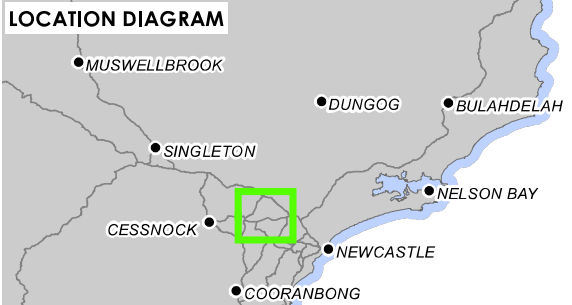
# **Attachment A – Preliminary Pipeline Alignment for Construction (APA Group, 03/06/21)**







APA Group  
Phone: +61 1800 941 15  
Web: [www.apa.com.au](http://www.apa.com.au)  
Email: [transmissiongis@apa.com.au](mailto:transmissiongis@apa.com.au)

PROJECT:	KURRI KURRI LATERAL PIPELINE																
TITLE:	Preliminary Pipeline Alignment for Consultation																
SUBTITLE:	Revision 0																
DATE:	3/06/2021																
DATA SOURCE:	Service Layer Credits: Source: Esri, Maxar, GeoEye, Earthstar Geographics, CNES/Airbus DS, USDA, USGS, AeroGRID, IGN, and the GIS User Community DCDB/ Roads: PSMA, Rivers: Geoscience Australia																
LEGEND:	<div><div>◆</div> Town</div> <div><div>●</div> Kilometre Point</div> <div><div>■</div> Compressor Station</div> <div><div>—</div> Current Alignment - Rev 0</div> <div><div>—</div> Watercourse</div> <div><div>—</div> Motorway</div> <div><div>—</div> Primary Road</div> <div><div>—</div> Arterial Road/Sub-Arterial Road</div> <div><div>—</div> Railway</div>																
DOCUMENT NUMBER:	560-MAP-L-7946																
<table><tr><td>0.1</td><td>Issued for Use</td><td>MB</td><td>TS</td><td>TW</td><td>03/06/21</td></tr><tr><td>Revision</td><td>Description</td><td>Drawn</td><td>Checked/QC</td><td>Approved</td><td>Date</td></tr></table>						0.1	Issued for Use	MB	TS	TW	03/06/21	Revision	Description	Drawn	Checked/QC	Approved	Date
0.1	Issued for Use	MB	TS	TW	03/06/21												
Revision	Description	Drawn	Checked/QC	Approved	Date												
SCALE:	1:70,000 @ A3																
<div><div>00.5123</div><div>Kilometres</div></div> <p>Coordinate System: GCS GDA 1994</p>																	
<div><div>LOCATION DIAGRAM</div><div>APA Group does not guarantee the accuracy or completeness of the map and does not make any warranty about the data. APA is not under any liability to the user for any loss or damage (including consequential loss or damage) which the user may suffer resulting from the use of this map. This map is confidential and the information and details contained in it are and remain the property of APA Group. © APA Group 2017.</div></div>																	