



**Ashtonfields**

Pty Limited ABN 47 084 407 652

29 April 2022

**SUBMITTED VIA PLANNING PORTAL**

Director - Resource Assessments  
Development Assessment, Department of Planning and Environment  
Locked Bag 5022  
PARRAMATTA NSW 2124

Dear Director - Resource Assessments

**Kurri Kurri Lateral Pipeline Project (SSI-22338205) – Ashtonfields Pty Limited Submission**

**1. Background**

I refer to State significant infrastructure application SSI-22338205 (**SSI Application**) lodged by APA Transmission Pty Limited (**APA**), seeking approval for the Kurri Kurri Lateral Pipeline (**Pipeline**). The SSI Application is currently being exhibited.

Ashtonfields Pty Limited (**Ashtonfields**) is the owner of land (**Ashtonfields Land**) which the proposed alignment of the Pipeline crosses for approximately 6 kilometres (**Proposed Pipeline Alignment**). The Ashtonfield Land hosts the Bloomfield Coal Mine, which is authorised under MP07\_0087 first granted on 3 September 2009 (as modified) (**Bloomfield Approval**).

In this regard we refer to:

- Annexure 1, which contains a list of lots forming part of the Ashtonfields Land;
- Appendix 2 to the Bloomfield Approval (extracted in Annexure 2 to this submission), which shows the project area under the Bloomfield Approval; and
- Figure 3.2 of the environmental impact statement lodged in support of the SSI Application (**EIS**) (extracted in Annexure 3 to this submission) which shows the Proposed Pipeline Alignment.



Since 1926

PO BOX R202  
Royal Exchange  
NSW 1225

[www.ashtonfields.com.au](http://www.ashtonfields.com.au)

[email.info@ashtonfields.com.au](mailto:email.info@ashtonfields.com.au)

Telephone 61 2 9223 1311



**Ashtonfields**

Pty Limited ABN 47 084 407 652

## 2. Submission

Ashtonfields and APA are currently in commercial discussions regarding the grant of an easement over the Proposed Pipeline Alignment across the Ashtonfields Land. As a part of these commercial discussions, Ashtonfields has raised concerns with APA regarding the Proposed Pipeline Alignment across the Bloomfield Coal Mine.

In this regard, we note that the Bloomfield Coal Mine is in active operations, and is currently authorised to operate until 31 December 2030 under the Bloomfield Approval. The alignment of the Pipeline which is ultimately approved across the Bloomfield Coal Mine and the Ashtonfields Land more generally must take into account the ongoing operations of the Bloomfield Coal Mine and the approved rehabilitation and monitoring commitments under Bloomfield Approval.

With respect to Proposed Pipeline Alignment, Ashtonfields would like to draw the Department of Planning and Environment's attention to the following matters:

- No arrangement has been reached between APA and Ashtonfields as of the date of this submission for the grant of an easement for the Proposed Pipeline Alignment across the Ashtonfields Land.
- The EIS at 2.8.1.12 provides that '*[t]he primary haul road for the Bloomfield Coal Mine will be crossed by horizontal boring to avoid impacting mining operations*' but does not clarify how this method will avoid impacts on the Bloomfield Coal Mine.
- The EIS provides at section 2.3.6.2 that '*existing sealed haul roads associated with the Abel Coal Mine (under care and maintenance) and the rehabilitated Donaldson Coal Mine*' without qualifying or elaborating on what access roads are proposed to be used.
- The EIS provides at 7.2.5.4 that '*[n]o material conflicts during construction or operation of the transmission pipeline are anticipated should the Abel Mine be brought back into production*' without elaborating on how this conclusion has been reached.
- The EIS provides at section 7.10.1.1 that '*[t]he mining areas of Donaldson Coal and Ashtonfields have not been considered sensitive receivers in this assessment, as noise levels in many parts of these active mining areas will likely exceed the noise levels of construction and operational activities associated with the Project*', which does not recognise that Donaldson is not being mined, and operations at Ashtonfields (where the Bloomfield Coal Mine is located) are forecasted to cease in 2030. Both areas will be adapted for potentially sensitive uses once fully rehabilitated which has not been considered or assessed in the EIS.
- If you would like to discuss this submission, please contact Glenn Crane

Yours faithfully,

Glenn Crane (Managing Director -Ashtonfields Pty Ltd)

+61414906166 ,

[glenn.crane@ashtonfields.com.au](mailto:glenn.crane@ashtonfields.com.au)



Since 1926

PO BOX R202  
Royal Exchange  
NSW 1225  
[www.ashtonfields.com.au](http://www.ashtonfields.com.au)  
[enquiries@ashtonfields.com.au](mailto:enquiries@ashtonfields.com.au)  
Telephone 61 2 9223 1311



**Ashtonfields**  
Pty Limited ABN 47 084 407 652

## **Annexure 1 – Schedule of Ashtonfields Land**

1/1045719  
3/1045720  
2/1045720  
1/1045723  
1/136865  
12/241097  
13/241097  
14/241097  
15/241097  
1/42349  
1/456999  
1/722209  
39/755237  
38/755237  
37/755237  
31/755237  
29/755237



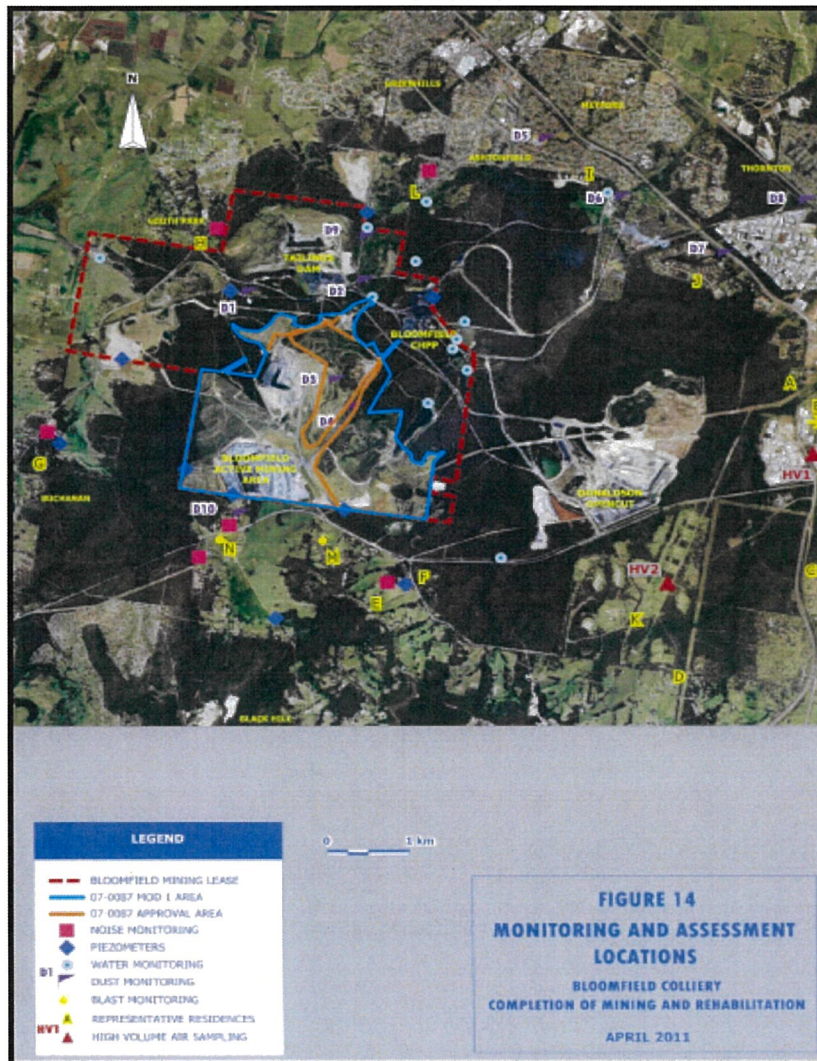
Since 1926

PO BOX R202  
Royal Exchange  
NSW 1225  
[www.ashtonfields.com.au](http://www.ashtonfields.com.au)  
[enquiries@ashtonfields.com.au](mailto:enquiries@ashtonfields.com.au)  
Telephone 61 2 9223 1311



**Annexure 2 – Bloomfield Coal Mine DA Area**

**APPENDIX 2  
PROJECT MAP**



Since 1926

PO BOX R202  
Royal Exchange  
NSW 1225  
[www.ashtonfields.com.au](http://www.ashtonfields.com.au)  
[enquiries@ashtonfields.com.au](mailto:enquiries@ashtonfields.com.au)  
Telephone 61 2 9223 1311



## Annexure 3 – Pipeline Location in EIS

