

Sydney Football Stadium Redevelopment Concept and Stage 1 Works – Modification 6 – Inclusion of Precinct and Carpark Building Envelope.

Application SSD-9249-Mod 6

Submission by Andrew Andersons AO, Architect
andrewpaddo@gmail.com
0427 609 907

I have lived a block away from the site of the Sydney football stadium for 48 years and have observed many changes over that period of time. As long as I can recall there has been community concern at the incremental erosion of parkland, and it is in this context, that if the ensuing development proves to be as attractive as the recently published aerial computer generated image, and the match day surface parking on the Moore Park grassed areas does in fact cease, there will be a significant public benefit.

I do however make the following observations:

1. Loss of perimeter tree planting to SFS carpark.

Upon the completion of the SFS in 1988, the current carpark was shielded by a continuous line of Port Jackson fig trees planted in a mound covered with a range of native ground cover plants. This maintained the “parklike” appearance of the site from Moore Park Rd and Driver Avenue obscuring the view of cars glistening in the sun. Some years later, then planning minister Frank Sartor changed the zoning of the car park site making commercial development permissible. This has led to the construction of two substantial buildings, for the NRL and UTS/Rugby Australia at the edges of the site. While these buildings house sporting organisations they have only a tenuous functional connexion with the adjacent sporting venues.

Unfortunately the UTS/Rugby Australia building was sited in such a way that a considerable number of the Port Jackson figs along the Moore Park Rd alignment were removed creating intrusive visual impact upon the previous “parklike” appearance of the site.

Had this building been set back as little as three metres from its current alignment, the trees could have been retained.

2. Mutilated trees and power poles in Moore Park Rd

Despite massive infusion of funding on the SFS and adjacent sites, the appearance of Moore Park Rd is marred by rotting timber power poles and power lines which have caused severe mutilation of the curbside Brush Box trees. No doubt the city of Sydney, RMS and Energy Australia will deflect any responsibility for this, but it would seem most desirable that the perimeter of his site that entails over \$1 billion of development could fund the undergrounding of this aerial wiring with significant aesthetic benefits.

3. Removal of ground cover under perimeter trees.

For some inexplicable reason, some five years ago, the then SCG Trust removed the underplanting to the perimeter trees leaving exposed surface roots and a dusty bank. This ugly unhealthy situation should be rectified, the underplanting reinstated and perhaps an irrigation system installed.

4. Signage and service kiosks at intersection of Moore Park Rd and Driver Avenue

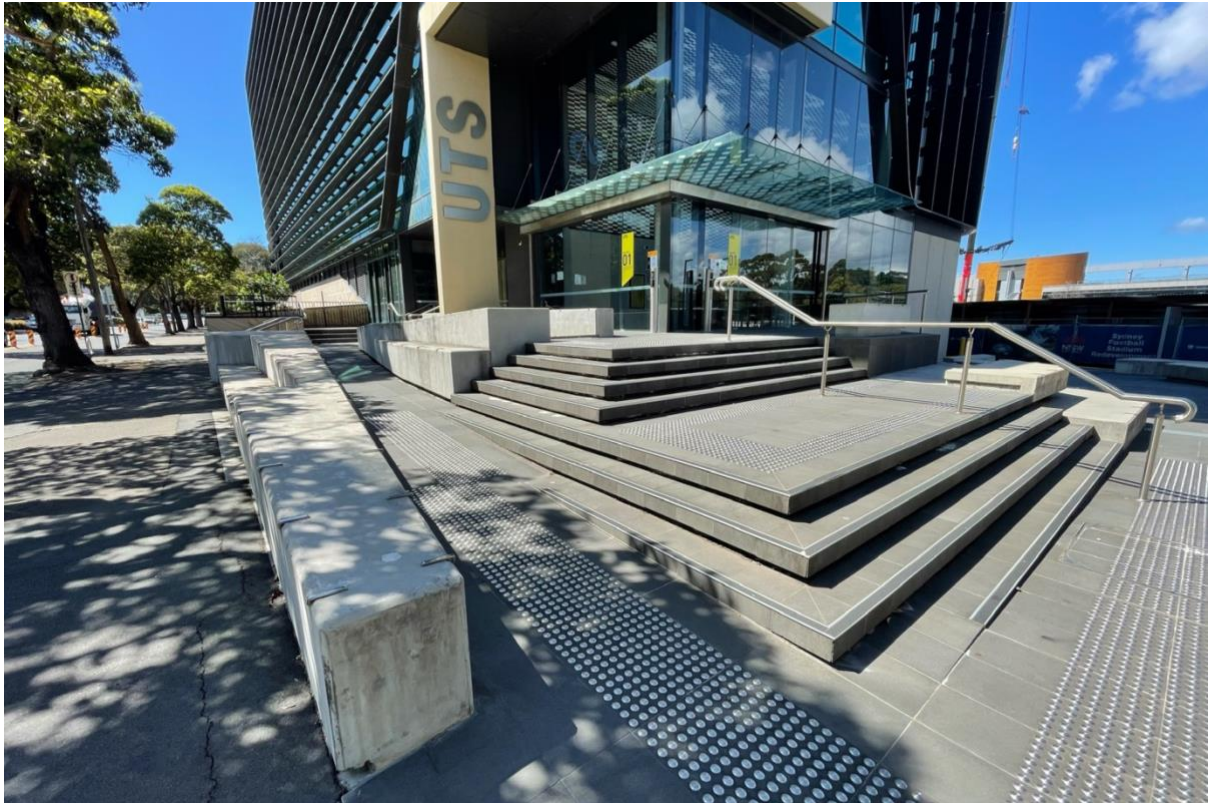
Upon approach from the city, the leading edge of the site is a collection of totally ill-assorted signs and services kiosks giving a slovenly first impression for this important site and venue of state significance. It is essential that a way of achieving a more aesthetically pleasing site be investigated.

5. Site Envelope

East West section A1 included in the exhibited drawings shows what appears to be a significant above-ground projection of the building envelope on the Driver Avenue alignment. To preserve the “parklike appearance” of the site, it is essential that perimeter trees be maintained and if the car park is to project above the level of Driver Avenue, a suitable landscape transition is constructed.

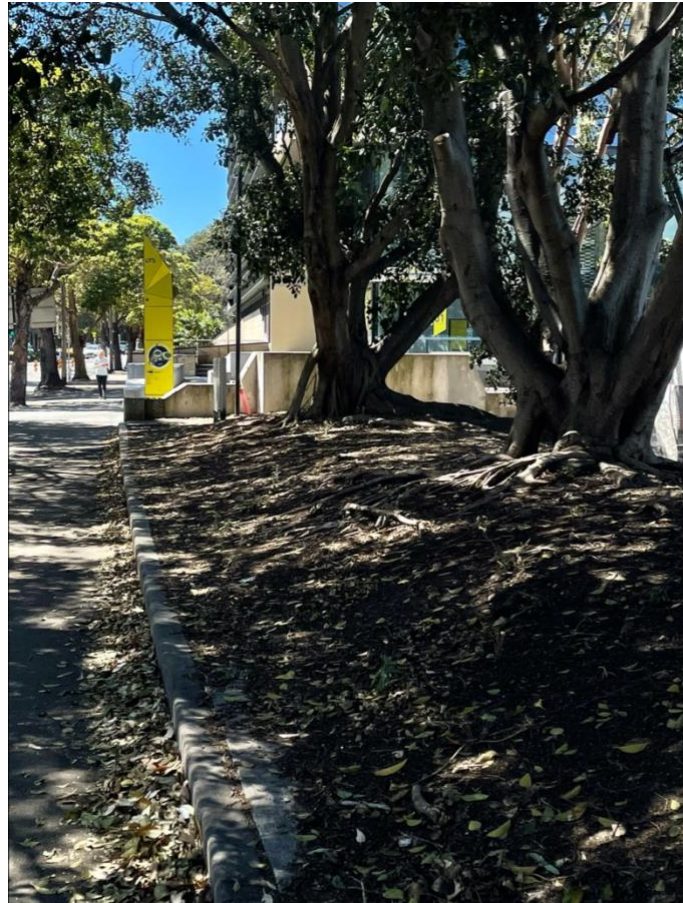


This CGI of the Village Precinct is promising and if realised as illustrated will enhance this section of Moore Park. It is important that the grassed areas above the car-parking at the western end of the site are as close to natural ground levels as possible and that the perimeter Port Jackson fig trees are maintained and nurtured. If there are level changes from the downhill slope of Driver Avenue, it is important that a gentle landscaped transition is incorporated.



The recently constructed UTS/ RUGBY AUSTRALIA building is intrusive in appearance and detracts from the park-like appearance of the precinct. If set back only a few metres from its current alignment, the perimeter planting of Port Jackson fig trees could have been kept to considerable aesthetic benefit.





For some inexplicable reason, the underplanting of native shrubs and creepers was removed about 5 years ago by the then SCG Trust exposing the roots of the trees. This needs to be ameliorated and the trees to be nurtured.





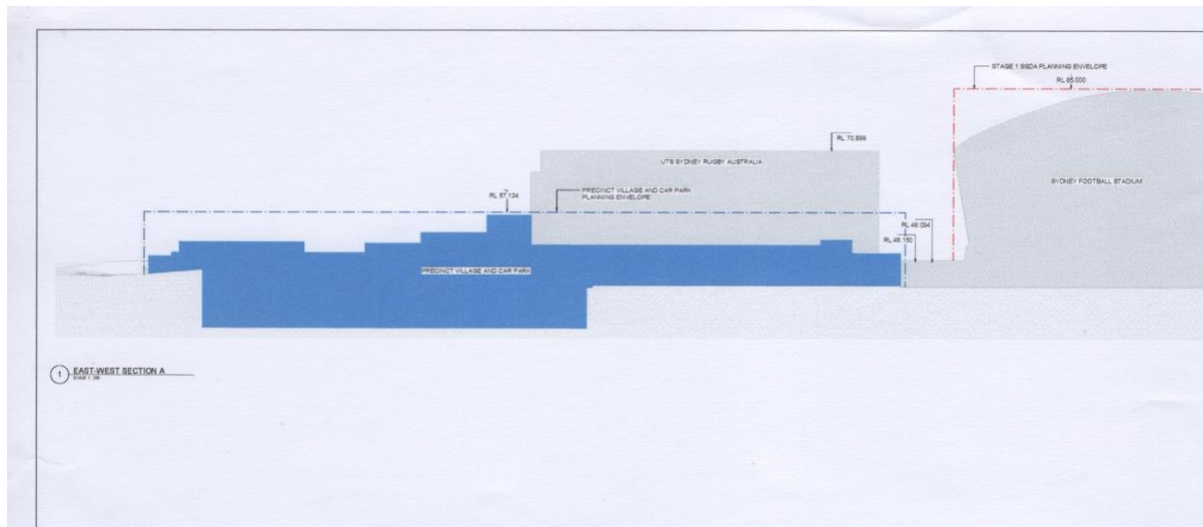
Mutilated Brush Box trees, aerial wires and rotting tree trunks as power poles create an incongruous context for a \$1b investment in sporting facilities.





This cluster of ill-assorted signage, services kiosks and boxy electronic bill board form a poor introduction to the site when arriving from the centre of Sydney.





It is unclear where this section is drawn but it would be unfortunate if the 'below ground' parking were to project above the level of Driver Avenue without a gentle landscaped transition.

