

1. Project land owned by Transport on the east side of the Pacific Highway at Raymond Terrace, consist of three Lots: The large lot is DP846612 Lot 14.
The two small lots are DP 840996 for Lots 14 and 15.
2. Private property on the market is on the west side of the Pacific Highway DP853008 Lot 42. 6c Elizabeth Avenue, Raymond Terrace.

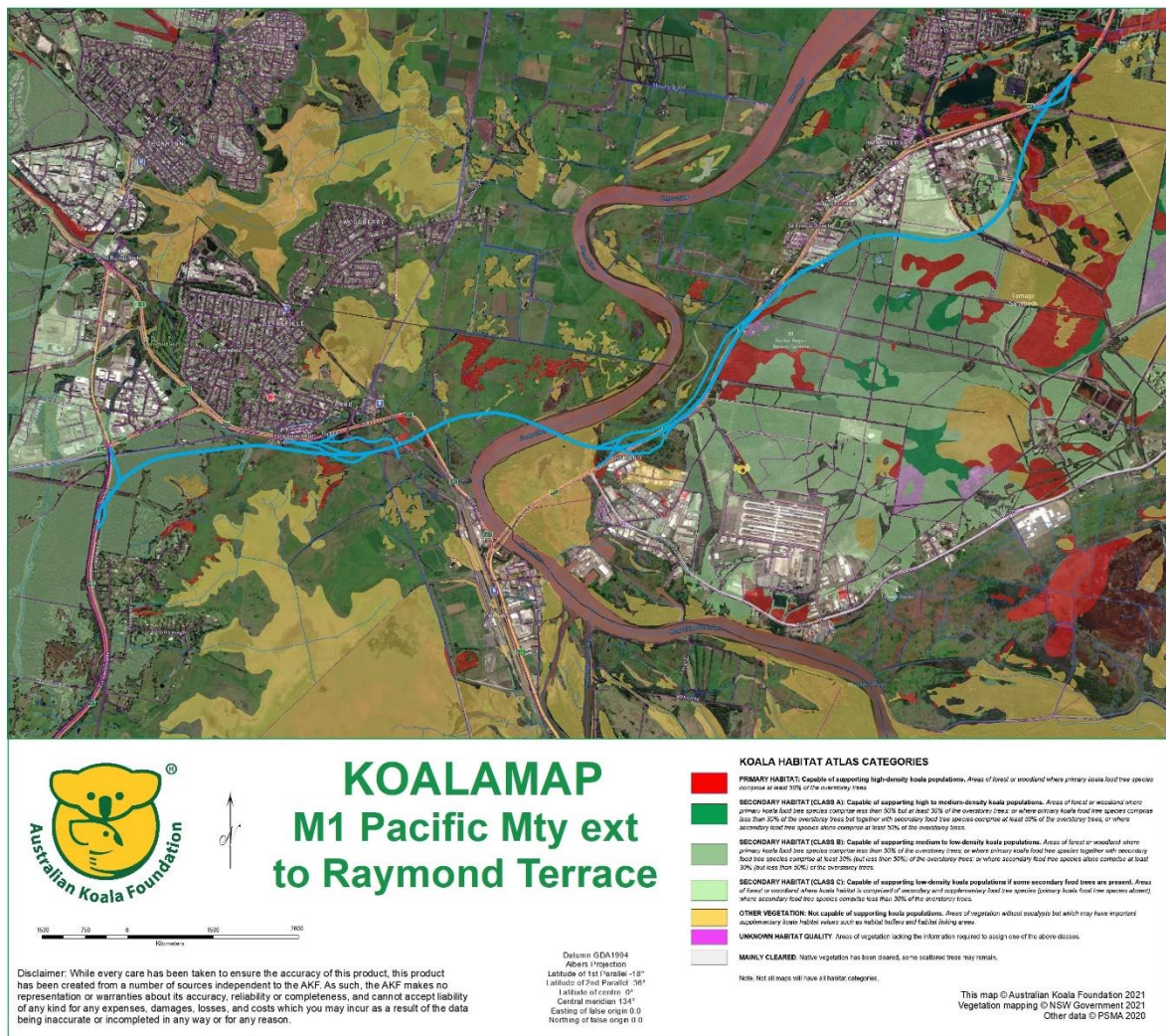


Figure 2:

Australian Koala Foundation, 'Koalamap M1 Pacific Motorway extension to Raymond Terrace, 2001'



Figure 3.

The red triangle area contains 6c Elizabeth Avenue, Raymond Terrace, DP 853008, Lot 42. This land is on the market.

The white area includes Elizabeth Reserve, Raymond Terrace.

The blue area is Muree Golf Course.