



Annexure 5

# ***Large Scale Solar Development***

***David Kitto***

***Executive Director, Resource Assessments***

***Presented on 26 June 2019 in Armidale to NSW Farmers Association members***

*Department of Planning and Environment*

## *Introduction*

- Minister & Department
- Strategic Context
- State Significant Development
- Large-Scale Solar Projects

## • *Minister & Department*

- *Environmental Planning and Assessment Act 1979*
- Minister for Planning & Public Spaces
- Department of Planning, Industry & Environment
- Whole of Government Co-ordination
- Policy, Assessment & Compliance
- Community Participation

## • *Strategic Context*

- Major change - energy sector
  - Retirement coal-fired power stations
  - Increase wind & solar development
  - Demand for dispatchable energy
  - Transmission
- Energy trilemma
  - Energy security & reliability
  - Cost
  - Lower emissions

## *Commonwealth*

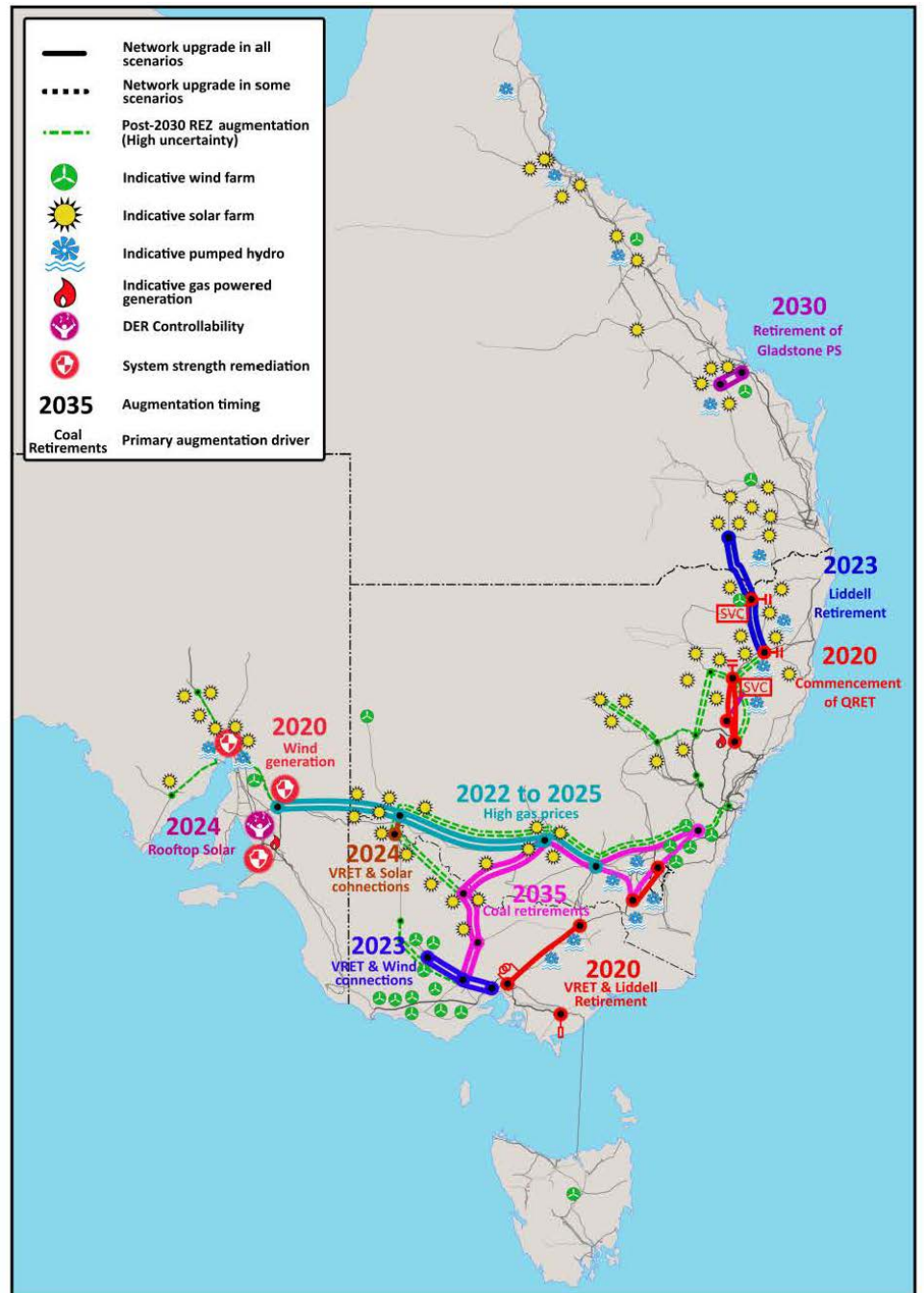
- National Electricity Market (AEMO)
- Paris Agreement Commitments
- Finkel Review – Future Energy Security NEM
- Integrated System Plan



# Integrated System Plan

July 2018

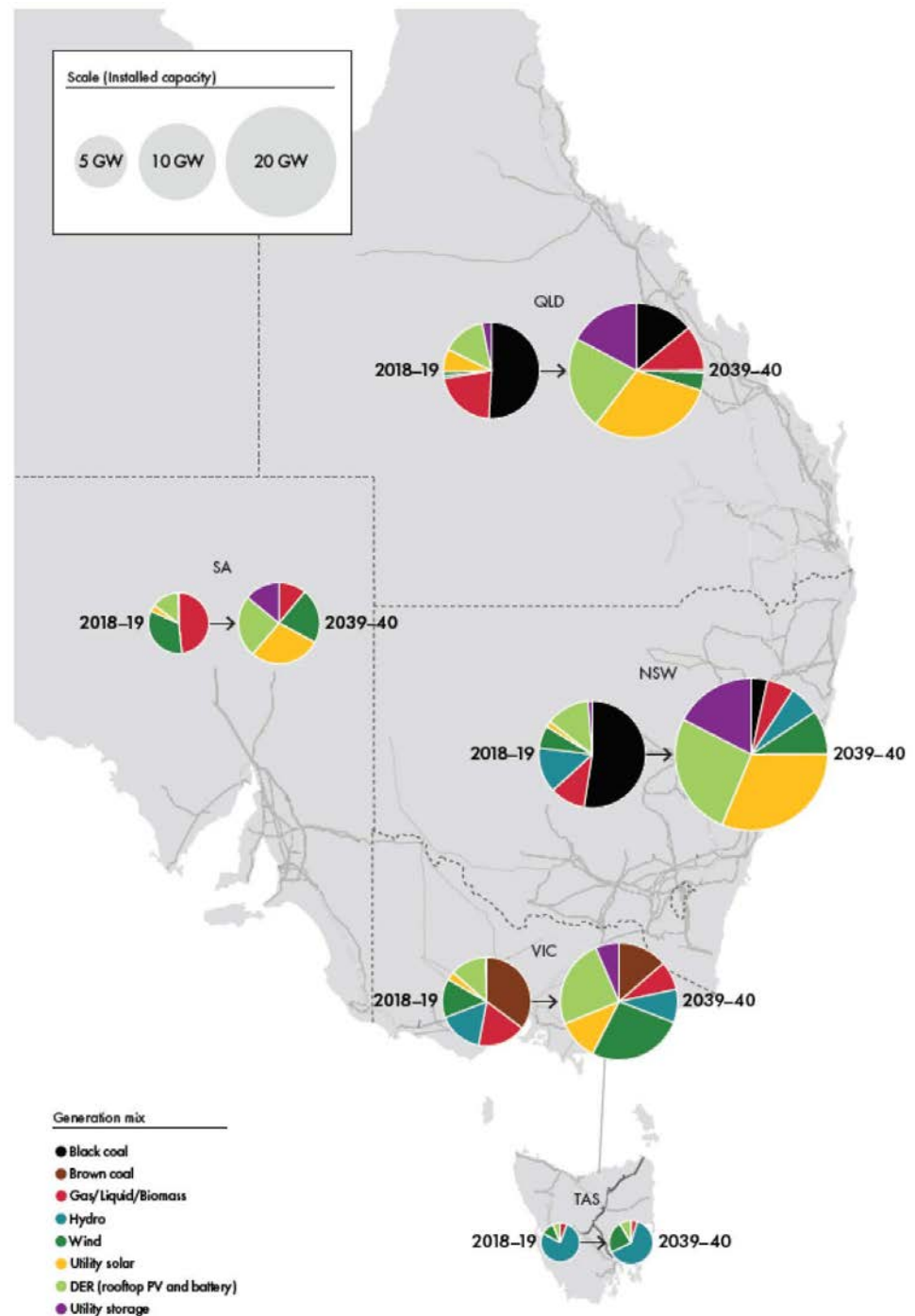
For the National Electricity Market



# Change in generation resource mix

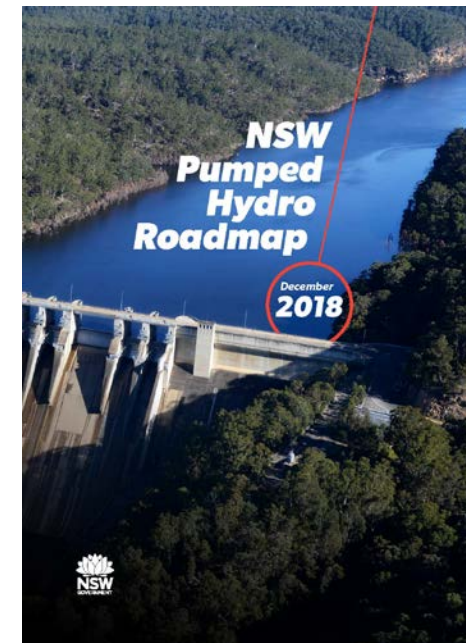
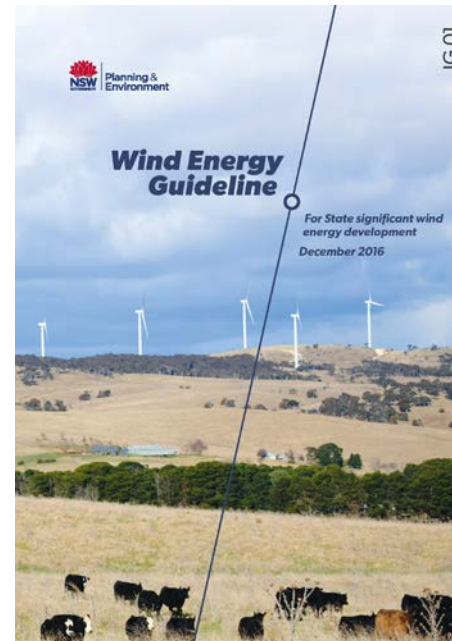
## Generation mix

- Black coal
- Brown coal
- Gas/Liquid/Biomass
- Hydro
- Wind
- Utility solar
- DER (rooftop PV and battery)
- Utility storage



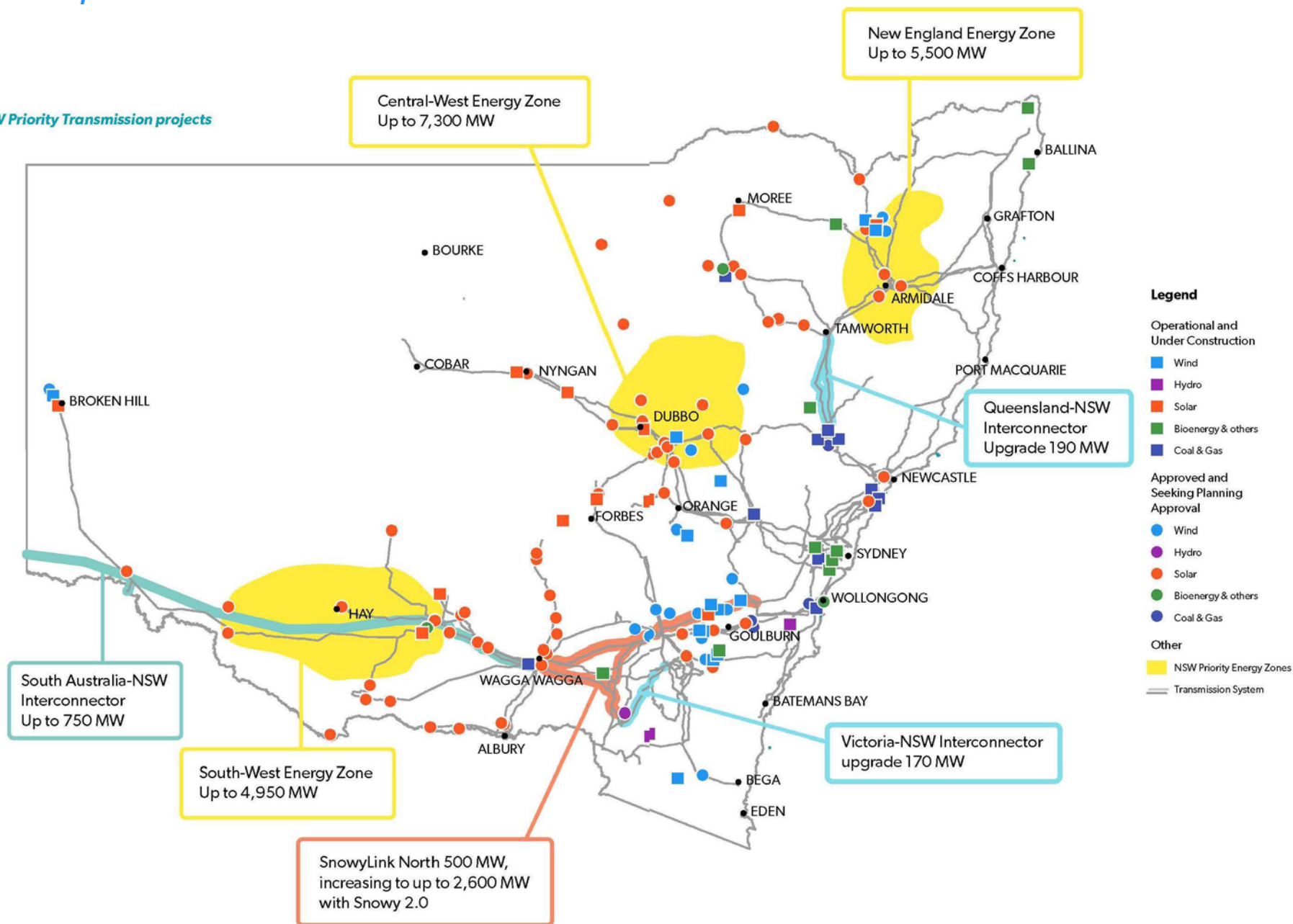
# NSW

- Climate Change Framework
- Renewable Energy Action Plan
- Renewable Energy Resources Map
- NSW Transmission Infrastructure Strategy
- New England & North West Regional Plan 2036
- Renewable Energy Guidelines





## NSW Priority Transmission projects



# Large-Scale Solar Development - NSW

- State Significant Development (>\$30 million)
- Permissibility (Infrastructure SEPP)
- Consent Authority – Minister/Independent Planning Commission
- Department & Agencies
- Councils
- Community Participation
- Policies & Guidelines
  - Large-scale Solar Energy Guidelines
  - Impact Assessment
- Standard Conditions



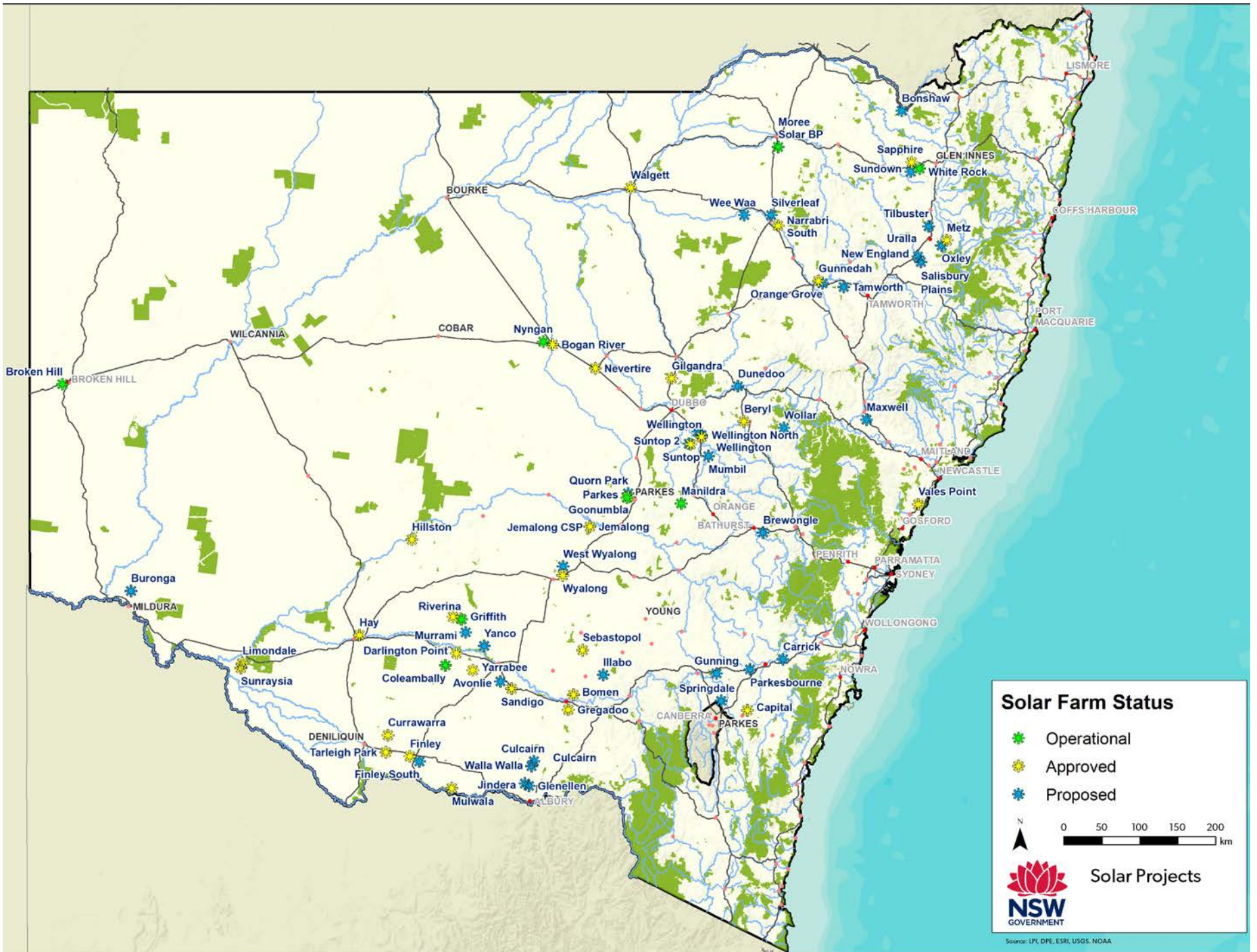
## **LARGE-SCALE SOLAR ENERGY GUIDELINE**

*For State Significant Development  
December 2018*

# State Significant Assessment Process

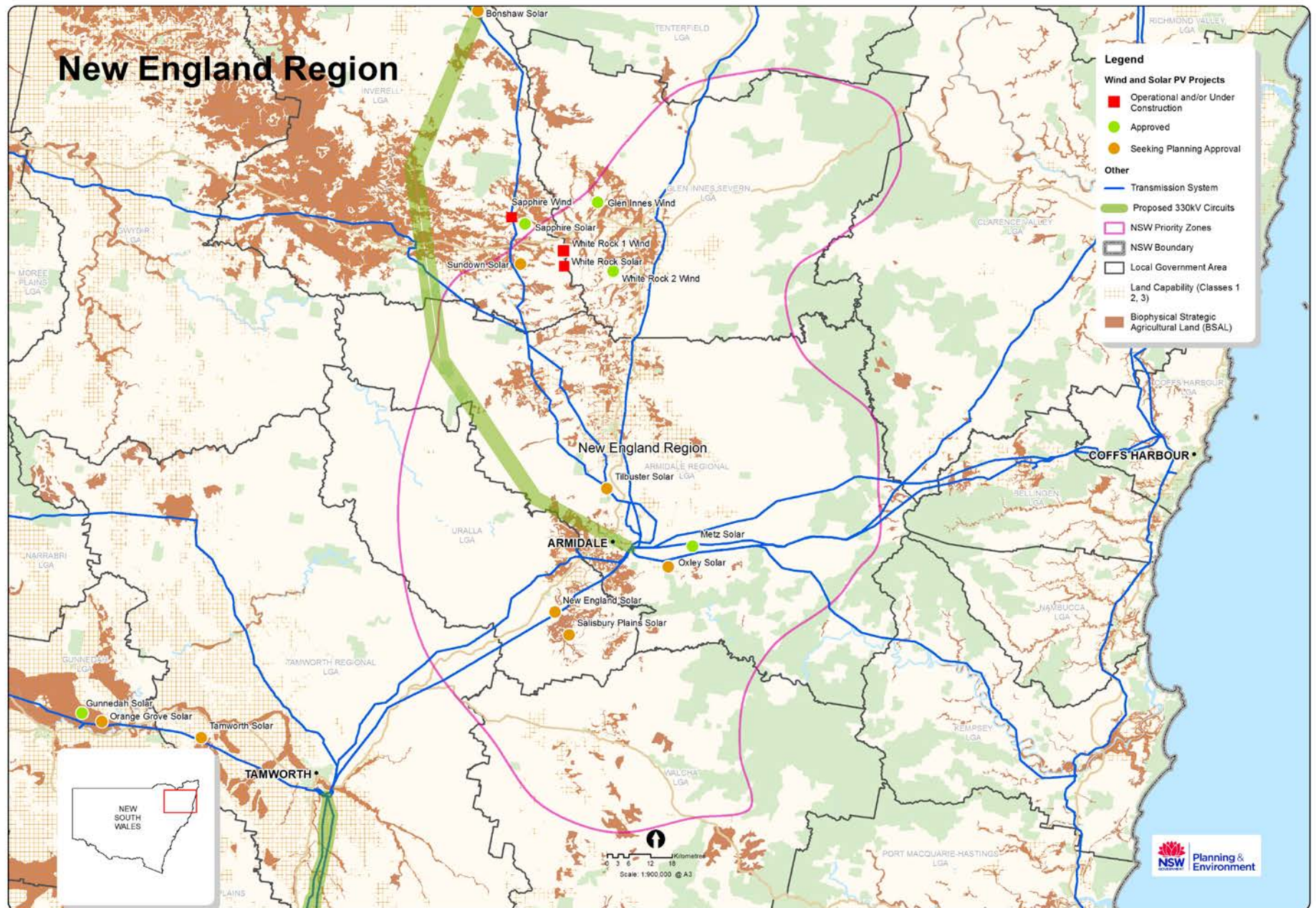








# New England Region



Salisbury Solar

New England Solar

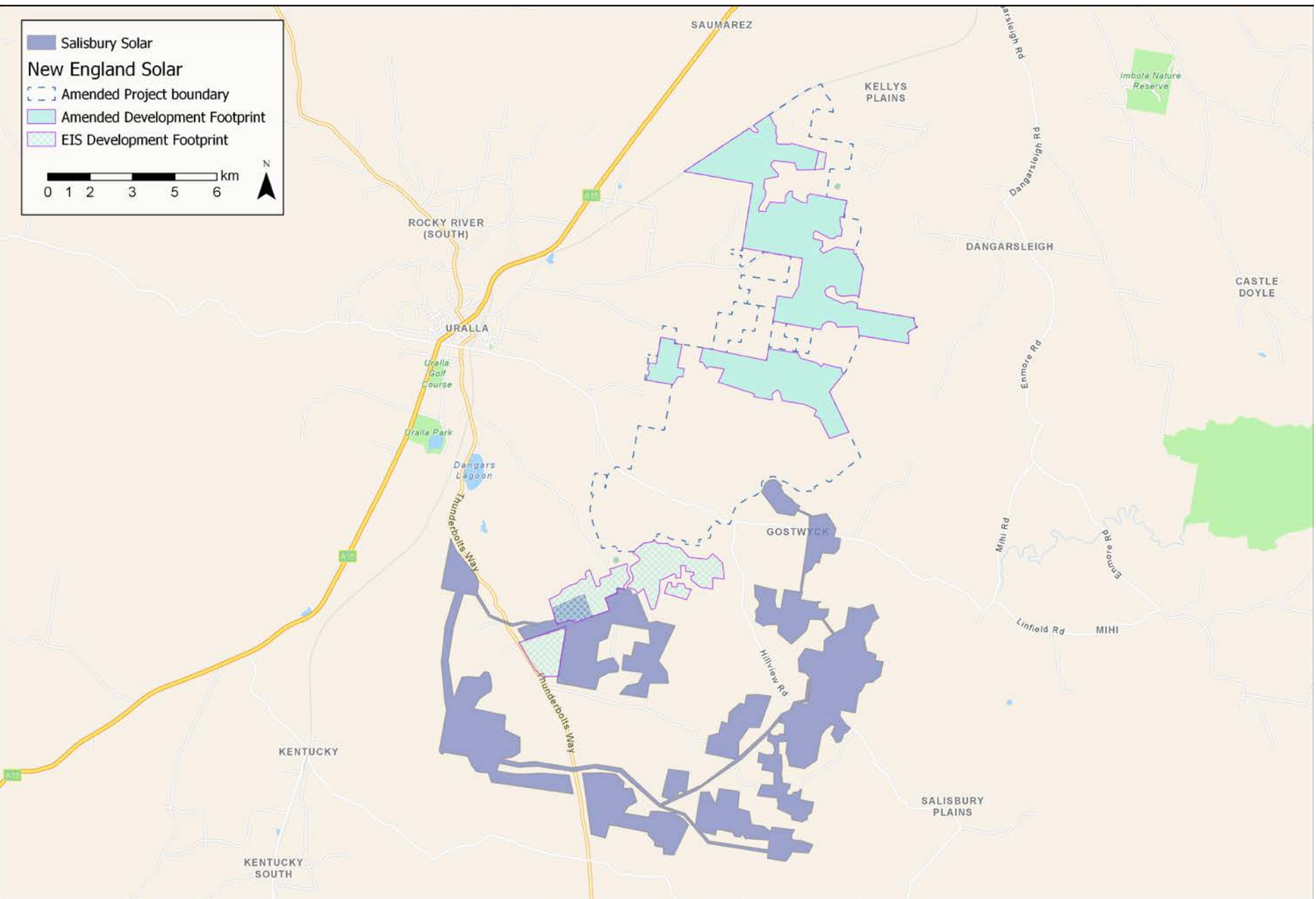
Amended Project boundary

Amended Development Footprint

EIS Development Footprint

0 1 2 3 5 6 km

N

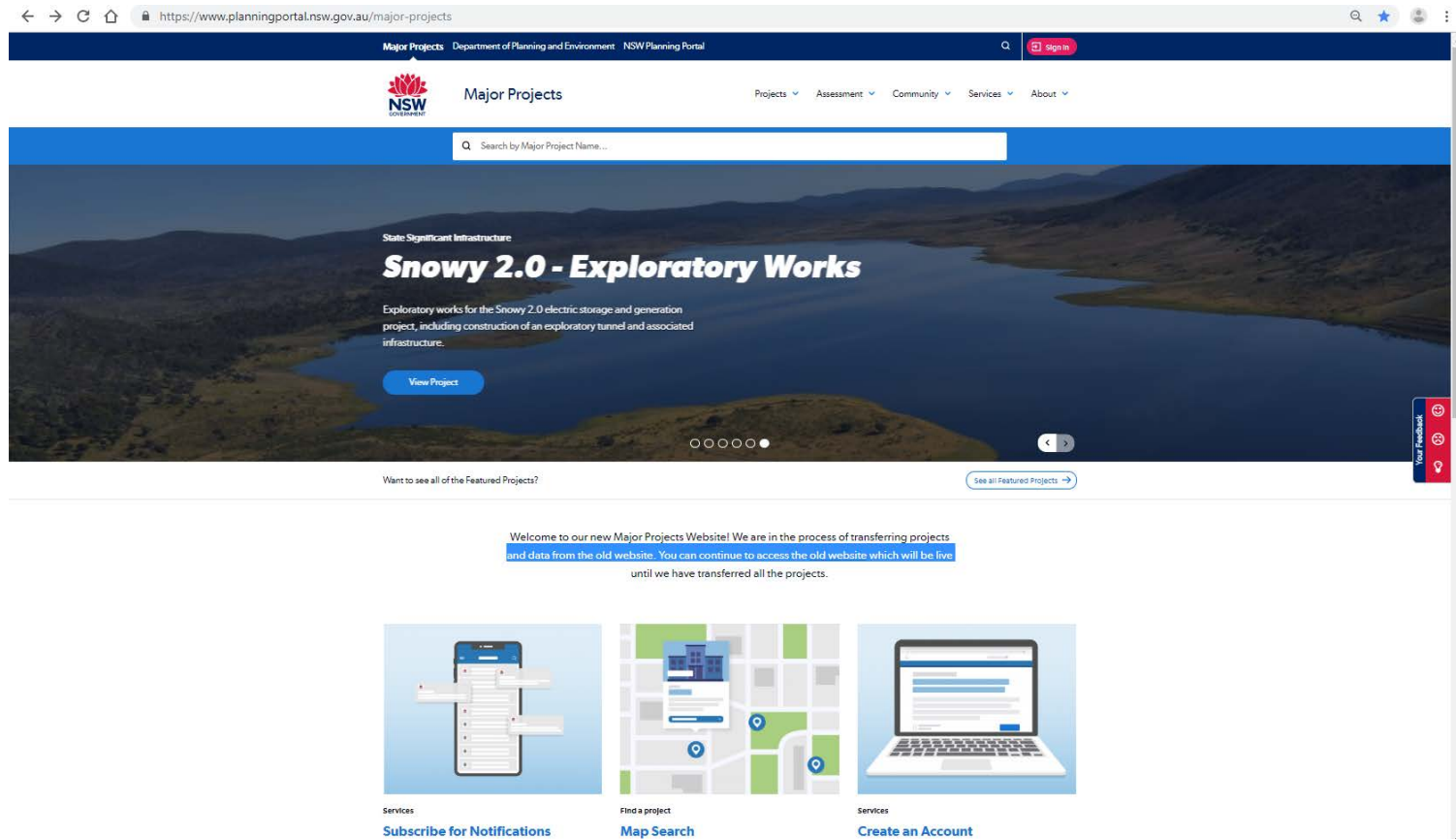


## ○ *Key Assessment Issues*

- Strategic Justification for Renewables
- Land & Agriculture
- Visual
- Traffic & Roads
- Bushfires & Flooding
- Biodiversity & Heritage
- Construction Impacts (dust, noise, water pollution, etc.)
- Decommissioning & Rehabilitation



# More Information



The screenshot shows the NSW Major Projects website. The browser address bar displays <https://www.planningportal.nsw.gov.au/major-projects>. The website header includes the NSW Government logo, the text "Major Projects", and navigation links for "Projects", "Assessment", "Community", "Services", and "About". A search bar is located below the header. The main content area features a large banner for "Snowy 2.0 - Exploratory Works" with a description: "Exploratory works for the Snowy 2.0 electric storage and generation project, including construction of an exploratory tunnel and associated infrastructure." A "View Project" button is visible. Below the banner, a message states: "Welcome to our new Major Projects Website! We are in the process of transferring projects and data from the old website. You can continue to access the old website which will be live until we have transferred all the projects." Three service tiles are displayed: "Subscribe for Notifications" (with a smartphone icon), "Map Search" (with a map icon), and "Create an Account" (with a laptop icon).



