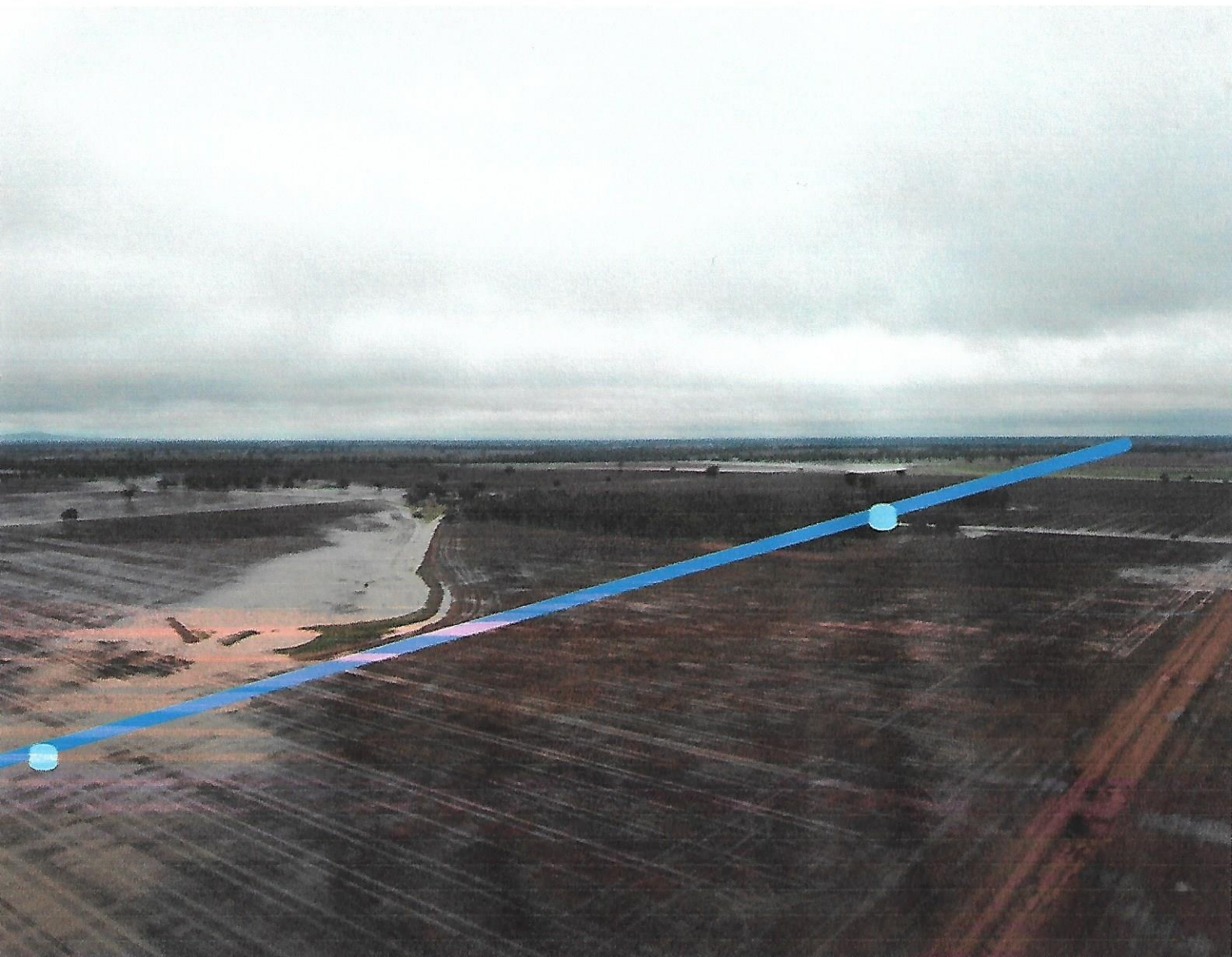


Volume of water on "Karoona" after a common rain event.
Serious concerns about water ponding when this water
flows from right to left of this page.





Rain event from April 2020
Blue line represents Inland Rail route
Light blue dots represent proposed culvert pipes

Major concerns are the lack of culvert pipes in the
main watercourse which in turn will pond water
upstream of the line.

