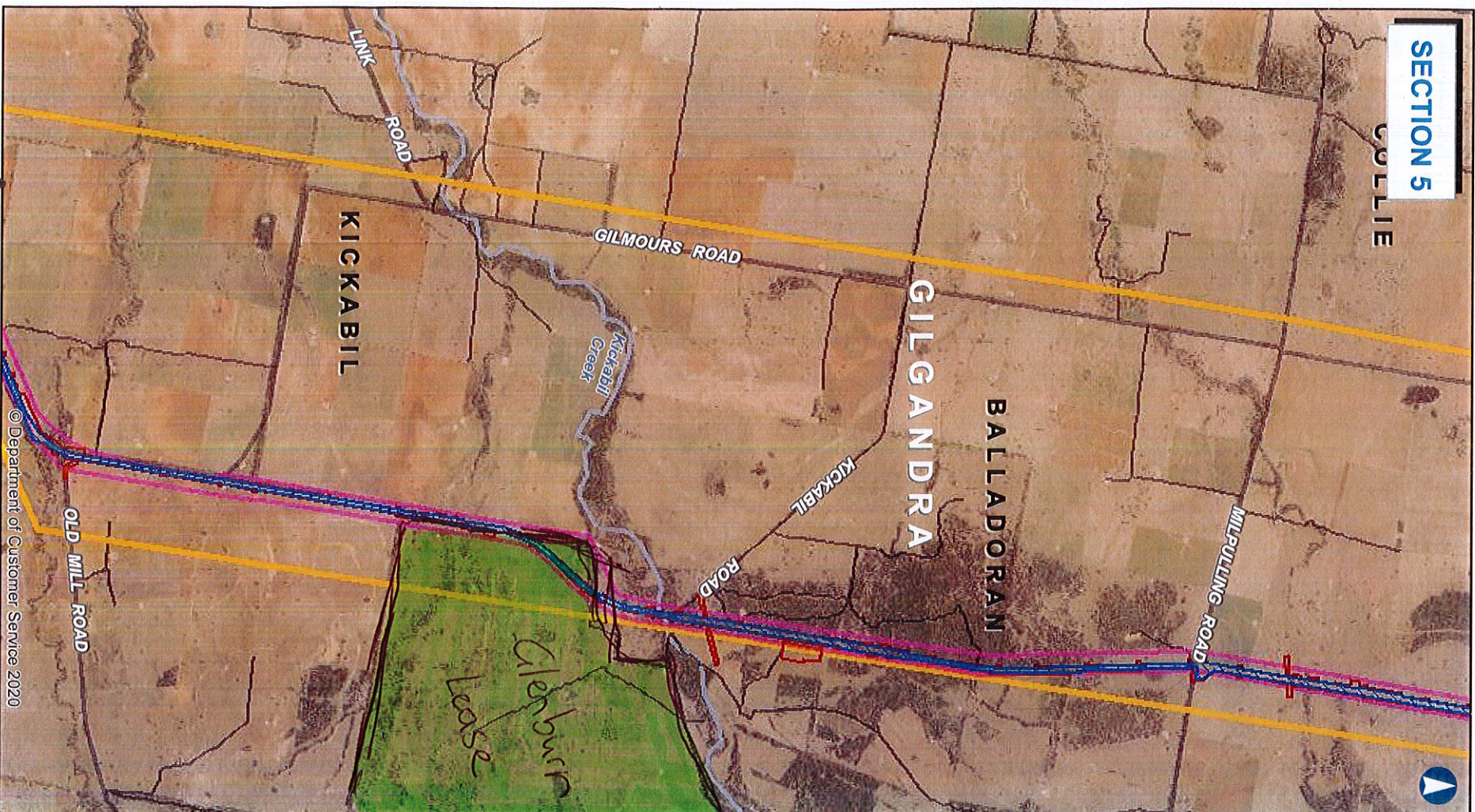
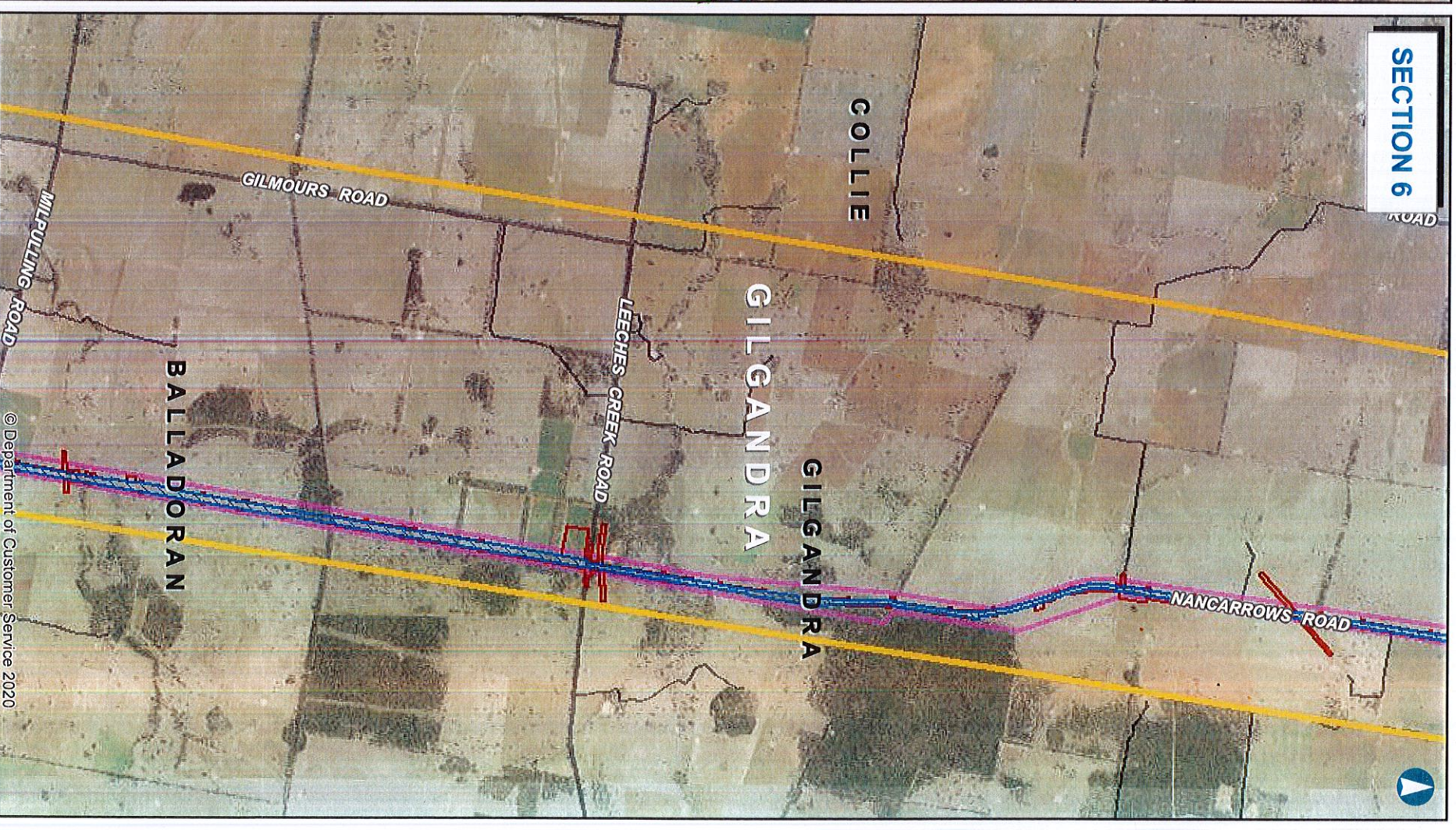


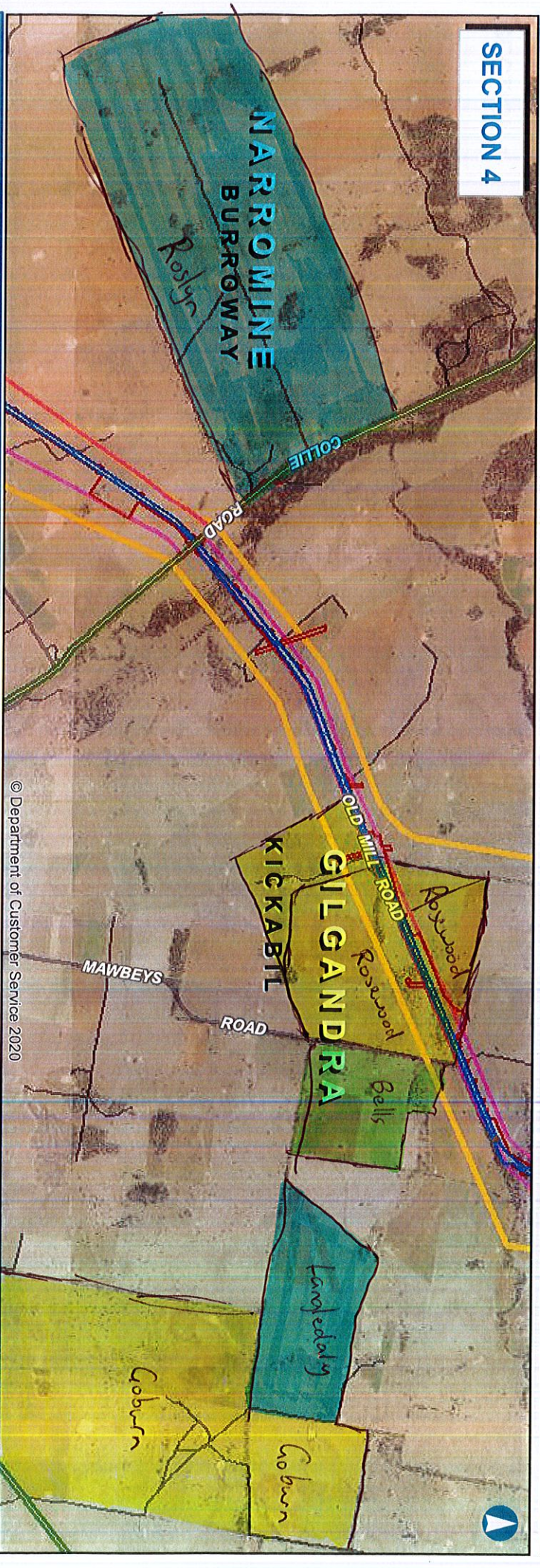
SECTION 5



SECTION 6



SECTION 4



NARROMINE TO NARRABRI

General Corridor and Construction Impact Zone

Sections 4 - 6 MAP 2



Coordinate System: GDA 1994 MGA Zone 55

ARTC makes no representation or warranty and assumes no duty of care or other responsibility to any party as to the completeness, accuracy or suitability of the information contained in this GIS map. The GIS map has been prepared from material provided to ARTC by an external source and ARTC does not warrant the accuracy or suitability of that material. ARTC will not be responsible for any loss or damage suffered as a result of any person whatsoever placing reliance upon the information contained within this GIS map.

Date: 15/11/2020
Author: IR.GIS
Data Sources:

Paper: A3
Scale: 1:62,000

- Rail corridor
- Construction impact zone
- Focused area
- Study area - Phase 1
- Local government area



INLAND RAIL

ARTC

The Australian Government is delivering Inland Rail, through the Australian Rail Track Corporation (ARTC), in partnership with the private sector.