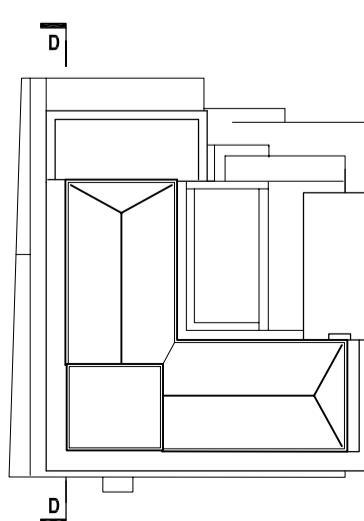


ISSUED FOR CONSTRUCTION

BARCLAY MOWLEM
BARCLAY MOWLEM CONSTRUCTION LIMITED
 SYDNEY OFFICE
 BUILDING 2, LEVEL 2, 20 BRIDGE STREET
 PYMBLE N.S.W. 2073
 TEL (02)9855 1600
 FAX (02)9855 1777
 A.B.N. 36 009 830 460

Consultants:
 Architect: Bates Smart Pty Ltd
 Structural Engineer: Meinhardt
 Services Engineer: George Floth
 Landscape Architect: Aspect Pty Ltd
 Acoustic Engineer: Acoustic Ltd ac consultancy

Location plan



Revision	Date	Description	Initial	Checked
B	29.05.03	construction issue	sd	nlr
Plant room roof removed and slab filled by 250mm				
A	14/04/03	construction issue	sd	bh
Car park supply fan room altered. Subsoil pit removed from section				
-	02/04/03	construction issue	sd	nlr
2	11/02/03	Consultant co-ordination issue	sd	nlr
1	24/01/03	Consultant co-ordination issue	sd	nlr
-	11/11/02	Consultant co-ordination issue	sd	nlr

BATESSMART			
document status			
design development	100%	date	11/02/03
for construction	100%	date	02/04/03
reviewed by	signed	date	30/05/03
approved by	signed	date	30/05/03
BARCLAY MOWLEM			
design manager	signed	date	

Section D - D

Check all dimensions and site conditions prior to commencement of any work, the purchase or ordering of any materials, fittings, plant, services or equipment and the preparation of shop drawings and/or the fabrication of any components.
 Do not scale drawings - refer to figured dimensions only. Any discrepancies shall immediately be referred to the architect for clarification.
 All drawings may not be reproduced or distributed without prior permission from the architect.

Status	Construction
Scale	1/100 @ A1
Drawn by	sd
Project No.	S9843
Plot Date	THURSDAY, OCTOBER 16, 2003, 9:43:56AM
Plot File	
Drawing No.	C A 06 104 B
stage.	discipline. dwg no. revision.

five dock square

Sydney 1/243 Liverpool Street
 East Sydney NSW 2010 Australia
 T 02 9380 7288 F 02 9380 7280
 email syd@batesmart.com.au
 http://www.batesmart.com.au

Melbourne 1 Nicholson Street
 Melbourne VIC 3000 Australia
 T 03 8664 6200 F 03 8664 6300
 email mel@batesmart.com.au
 http://www.batesmart.com.au

Bates Smart Pty Ltd ABN 70 004 999 400

BATESSMART