

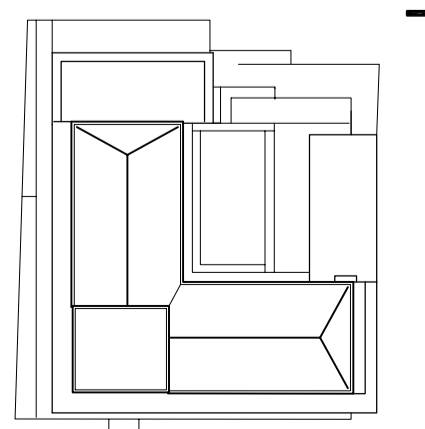
EXTERNAL FINISHES LEGEND:

CLD-01	CLADDING / EXTERNAL FINISH
REFER EXTERNAL SECTION OF 01200 PRODUCT SCHEDULE	
NOTE: all dimensions to be checked against on site conditions refer to window schedule for glazing	

BARCLAY MOWLEM
BARCLAY MOWLEM CONSTRUCTION LIMITED
 SYDNEY OFFICE: BUILDING 2, LEVEL 2, 20 BRIDGE STREET, PYMBLE, N.S.W. 2073
 TEL: (02) 9855 1600
 A.B.N. 36 009 830 460
 FAX: (02) 9855 1777
 COPYRIGHT: This drawing is the property of the company and is not to be used wholly or in part without prior consent of the company.

Consultants:
 Architect: Bates Smart Pty Ltd
 Structural Engineer: Meinhardt
 Services Engineer: George Floth
 Landscape Architect: Aspect Pty Ltd
 Acoustic Engineer: Acoustic Ltd ac consultancy

Location plan



Revision	Date	Description	Initial	Checked
C	30/07/03	for construction - constr. joints added	bh	nfr
B	14/07/03	Issued for Construction	nfr	sd
Cafe opening and stair revised, location of external lights shown				
A	02/06/03	Issued for Construction	nfr	sd
penthouse & terraces revised, finishes updated, window W2/46 added				
windows to terrace apartments mirrored to reflect planning, Library wins amended				
-	17/04/03	Issued for Construction	sd	bh
-	12/02/03	Issued for tender	cc	bh
-	20/12/02	consultant coordination issue	cc	bh
-	11/11/02	consultant coordination issue	cc	nfr

BATESSMART

document status			
design development	100%	date	20/12/02
for construction	100%	date	23/05/03
reviewed by	signed	date	30/07/03
approved by	signed	date	30/07/03
BARCLAY MOWLEM			
design manager	signed	date	

East Elevation

Check all dimensions and site conditions prior to commencement of any work, the purchase or ordering of any materials, fittings, plant, services or equipment and the preparation of shop drawings and/or the fabrication of any components. Do not scale drawings - refer to figured dimensions only. Any discrepancies shall immediately be referred to the architect for clarification. All drawings may not be reproduced or distributed without prior permission from the architect.

ISSUED FOR CONSTRUCTION

five dock square

Status	Construction
Scale	1/100 @ A1
Drawn by	cc/nfr
Project No.	S9843
Plot Date	WEDNESDAY, JULY 30, 2003, 5:37:48PM
Plot File	
Drawing No.	C A 05 102 C
stage.	discipline. dwg no. revision.

Sydney 1/243 Liverpool Street
 East Sydney NSW 2010 Australia
 T 02 9380 7288 F 02 9380 7280
 email syd@batesmart.com.au
 http://www.batesmart.com.au

Melbourne 1 Nicholson Street
 Melbourne VIC 3000 Australia
 T 03 8664 6200 F 03 8664 6300
 email melb@batesmart.com.au
 http://www.batesmart.com.au

Bates Smart Pty Ltd ABN 70 004 999 400

BATESSMART