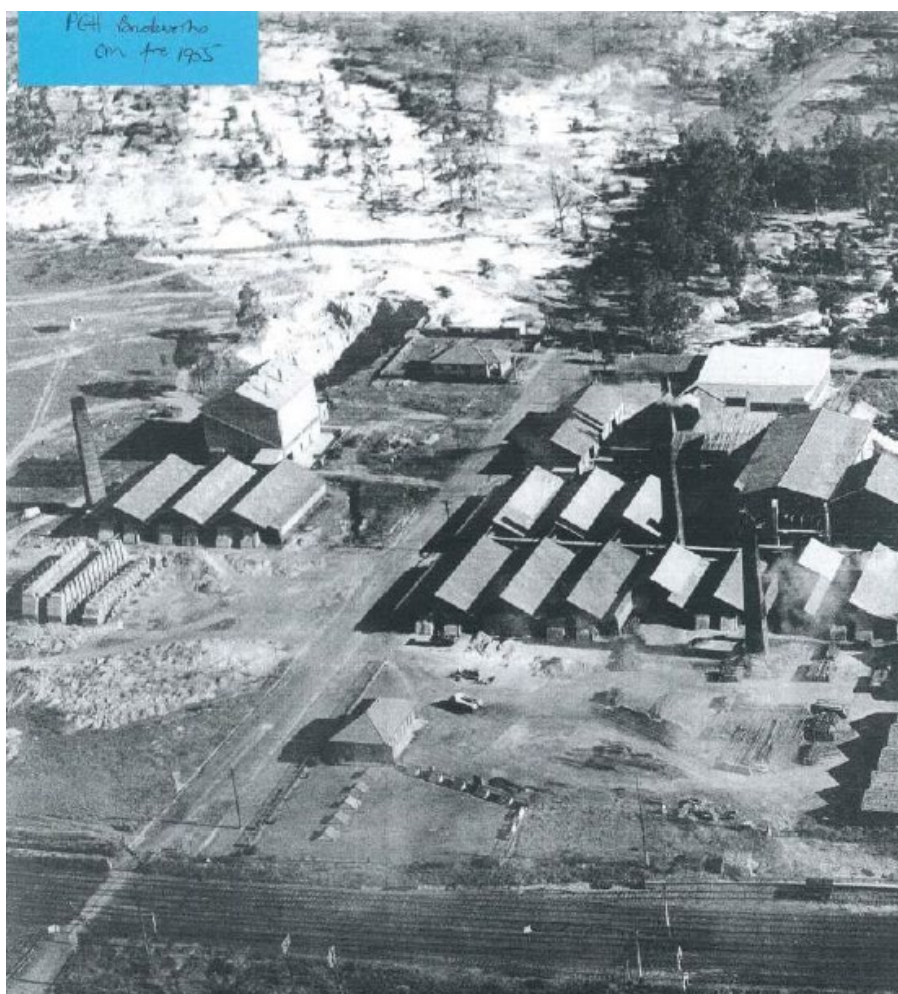


HERITAGE IMPACT STATEMENT ADJUCNT TO UMWELT 2018 HERITAGE STUDY

**New Maitland Hospital,
Metford NSW
2323**



Martin Carney

Archaeological Management & Consulting Group

for

Multiplex Australasia

April 2019

Disclaimer

The veracity of this report is not guaranteed unless it is a complete and original copy.

This report may be inaccurate, incomplete, not original, or modified, if it appears in monochrome form and the signature below is a copy.

*Martin Carney
Director
(mobile 0411 727 395)*



Archaeological Management & Consulting Group

AEGIS HERITAGE Pty Ltd ACN 121 655 020

Ph (02) 9568 6093
Fax (02) 9568 6093
Mob 0411 727 395
E-mail amac@archaeological.com.au

Cover Image:

Pre 1955 photograph of nearby brickworks.

The vacant area forming the top portion of the photograph (near the blue label) and south of the brickworks forms the current study area.
Plate 3.3 in Umwelt (2018).

CONTENTS	PAGE
TABLE OF FIGURES	2
1.0 INTRODUCTION	4
1.1 BACKGROUND	4
1.2 PROJECT DESCRIPTION	4
2.0 BRIEF SITE HISTORY AND DEVELOPMENT	6
3.0 ARCHAEOLOGICAL POTENTIAL	7
4.0 ARCHAEOLOGICAL HERITAGE IMPACT	8
5.0 RECOMMENDATIONS	9
6.0 APPENDICES	10
6.1 EXTRACT FROM UMWELT 2018	10

TABLE OF FIGURES

Figure 6.1	Image showing original caption indicating the location of Turton's Brickworks is not on the project area.	11
Figure 6.2	Aerial photograph showing the approximate location of SSI 1 compared to SSI 2.	12
Figure 6.3	The approved Stage 1 SS1 Concept (outlined in red) compared to the new SSI2 design (outlined in blue).	13
Figure 6.4	Proposed Massing North Elevation with EIS Envelope Overlaid.	14

GLOSSARY AND ABBREVIATIONS

The following definition of terms have mostly derived from the glossary provided in Heritage Office Department of Urban Affairs and Planning (1996) *Archaeological Assessments*.

Term	Definition
AMAC	Archaeological Management and Consulting Group
Archaeological feature	Any physical evidence of past human activity. Archaeological features include buildings, works, relics, structures, foundations, deposits, cultural landscapes and shipwrecks. On archaeological excavations the term 'feature' may be used in a specific sense to refer to any item that is not a structure, a layer or an artefact (for example, a post hole).
Artefacts	An object produced by human activity. In historical archaeology the term usually refers to small object contained within occupation deposits. The term may encompass food or plant remains and ecological features (for example, pollen).
Heritage Division	Formerly known as the Heritage Branch
Historical Archaeology	The study of the human past using both material evidence and documentary sources. In Australia 'historical archaeology' excludes Aboriginal archaeology prior to non-indigenous occupation but may include 'contact' sites.
Relic	Defined by the NSW Heritage Act (see Section 1.5.3) as: "any deposit, artefact, object or material evidence that: (a) relates to the settlement of the area that comprises New South Wales, not being Aboriginal settlement, and (b) is of State or local heritage significance"
Work	Archaeological material related to road and rail infrastructure which is not considered a relic in terms of the NSW Heritage Act 1977, though may retain archaeological significance independent of the statutory definitions. The interpretation of a 'work' has been defined in consultation with the Heritage Division

1.0 INTRODUCTION

1.1 BACKGROUND

Multiplex Australasian has requested the Archaeological Management and Consulting Group to review Umwelts (2018), Historical Heritage Assessment in conjunction with the proposed New Maitland Hospital, Metford. AMAC group has produced this report as an update to adjunct to Umwelts (2018) assessment which reviews the archaeological potential and heritage impacts of the concept design approved under the Stage 1 – State significant Infrastructure (SSI) application. The report conforms to Heritage Office Guidelines for Archaeological Assessment.¹

The proposed design is consistent with the approved design, however the location of the building has moved approximately 15m to the east and has the addition of a carpark to the north of the building. AMAC Group's field collection programme identified no new relics outside those assessed in the 2018 Historical Heritage Assessment by Umwelt from Stage 1 EIS report. The CSR/PGH Brickworks former brick press building was found on Lot 401 which irrespective of the proposed design location change, does not fall within the portion of land subject to the proposed stage 2 SSI design and therefore will not be impacted by this work (see Figure 6.1). There are no definable impacts to known relics occasioned by the SSI2 design changes.

A summary of the site history and development of the study area has been extracted from the Umwelt 2018 report and reproduced here for context alongside revised plans and project area location (see Figure 6.1-Figure 6.4) as well as a summary of archaeological potential and heritage impact statement. The recommendations remain unchanged as per Umwelts 2018 assessment.

1.2 PROJECT DESCRIPTION

Health Infrastructure has committed to undertaking a Stages Infrastructure Application in accordance with Section 115ZD (1) of the Environmental Planning and Assessment Act 1979 (EP&A Act) for the following works:

- Stage 1: Site clearance and preparatory works (approved under SSI9022).
- Stage 2: Design and construction of the hospital Main Works (this application SSI9775).

Stage 2 includes the design and construction work generally comprising:

- A new seven storey Acute Services Building, including:
 - Emergency services

¹ Heritage Office and Department of Urban Affairs and Planning (1996).

-
- Medical, surgical, paediatric and maternity services
 - Critical care services for adults and babies, including a special care nursery
 - Operating theatres, delivery suites and assessment rooms
 - Palliative care and rehabilitation services
 - Mental health services
 - Satellite renal dialysis
 - New chemotherapy services
 - Oral health service
 - A range of ambulatory care and outpatient clinics
-
- Internal road network and car parking for staff, patients and visitors
 - Signage
 - Site landscaping and open space improvements
 - Tree removal
 - Utility and services connection and amplifications works.

2.0 BRIEF SITE HISTORY AND DEVELOPMENT

The Maitland district was likely discovered well before Governor King directed an official survey of the area. The area was suitable for timber getting and agricultural settlement. In 1804 a permanent settlement was established in Newcastle to explore the resources in the Maitland area. From 1819 onwards Governor Macquarie allowed settlement of both free and convict settlers. The agricultural prosperity of the area increased as well as industrial development in the late 19th century which helped form smaller surrounding towns (Umwelt 2018, pp. 10-20).

John Baker of F Baker and Sons Pty Ltd immigrated to Australia in 1852 and established a brick manufacturing company in East Maitland. Prior to 1870 a small yard operated by Messrs Smith and Dawson specialised in hand moulded bricks on the western side of Metford Road (not on the study site). By 1882 Frank Turton of Turton and Sons purchased the five-acre yard for £178. Turton's East Maitland (Metford) brickworks company expanded and by c.1939 had extended the property to the eastern side of Metford Road on the subject site. The area was subjected to significant disturbance as a result of these activities which included: excavating and stripping the top soil almost completely, establishment of infrastructure such as vehicle access tracks and various buildings associated with the production of clay products. However, based on historical mapping and photographs there is no evidence in the historical record that suggests that any buildings or infrastructure was constructed within the project area. The area appears to be used for public use such as quarrying and vehicle movement but predominantly remained undeveloped land (Umwelt 2018, pp. 10-20).

3.0 ARCHAEOLOGICAL POTENTIAL

Umwelt's Historical Heritage Assessment in 2018 evaluated and addressed the potential for buildings on the subject area stating:

“Former buildings and structures associated with the use of the overall site as a brickworks were identified in the 2003 heritage assessment as being of heritage significance. In particular, the former brick press building was identified in the 2003 assessment of being high significance..... however, none of these structures were located within the current project area; the historical record strongly suggests that all former structures associated with the brickworks were located within the western precinct on the opposite side of Metford Road (on Lot 401), or to the north of the current project area and within an established building complex..... In addition to this, all former above ground buildings have been demolished in their entirety to at least the current ground level (Umwelt 2018, pp. 30-31).”

The assessment identified that the archaeological potential of remains pertaining to the brickworks in the project area was unlikely to exist on the study site, identified as being outside of the current site boundary.

4.0 ARCHAEOLOGICAL HERITAGE IMPACT

Since the development was proposed in 2018, the SSI2 designs has slightly altered the location of the proposed development (see Figure 6.1-Figure 6.4). The New Maitland Hospital building complex is being moved 15 metres to the east, situated closer to the disturbed quarry area, however still not within the bounds of the brick press building location. This area was used primarily for quarrying purposes or was otherwise maintained as undeveloped land (Umwelt 2018, p. 33).

The 2018 proposal required two stages of development; first stage being concept proposal for the proposed development, site clearance and preparatory works; second stage, the construction of the New Maitland Hospital. The new SSI2 design has the same proposed impacts as the 2018 assessment and requires minor and major excavation works which will remove all top soil and any existing archaeological material, should it survive. However, there are no listed or previously identified items or elements of built heritage significance known within or in close proximity to the new SSI2 project area (Umwelt 2018, p. 33). As discussed in the archaeological potential, the former brick press building was not located within the new proposed SSI2 design as per the Umwelt Historical Heritage Assessment from the Stage 1 EIS report (see Figure 6.1).

Reuse of material from the demolished brick press building in the New Maitland Hospital Project is not proposed as the former building is not located in the vicinity of the previous project area or the current SSI2 design location. Any salvaged materials/fabrics on Lot 401 (not on the study site) however, could be considered for use as part of future development of the Metford triangle.

Therefore, there are no definable impacts to relics occasioned by the changes for SSI2 designs. The CSR/PGH Brickworks press building remains assessed in 2018 by Umwelts as not being on the allotments subject to SSI2 and thus will not be impacted by the proposed works.

5.0 RECOMMENDATIONS

As previously discussed, the CSR/PGH Brickworks press building is not located or in the vicinity of the SSI2 design area and thus the proposed works for the New Maitland Hospital will not impact on any heritage items of known significance. No historical heritage constraints or opportunities have been identified for the current project area.

Therefore, the recommendation for the new proposed development remains unchanged as per Umwelts (2018), Heritage Assessment Report.

Please do not hesitate to contact myself if you have any further questions.

Regards



Martin Carney

Director

martincarney@archaeological.com.au

0411 727 395

6.0 APPENDICES

6.1 EXTRACT FROM UMWELT 2018

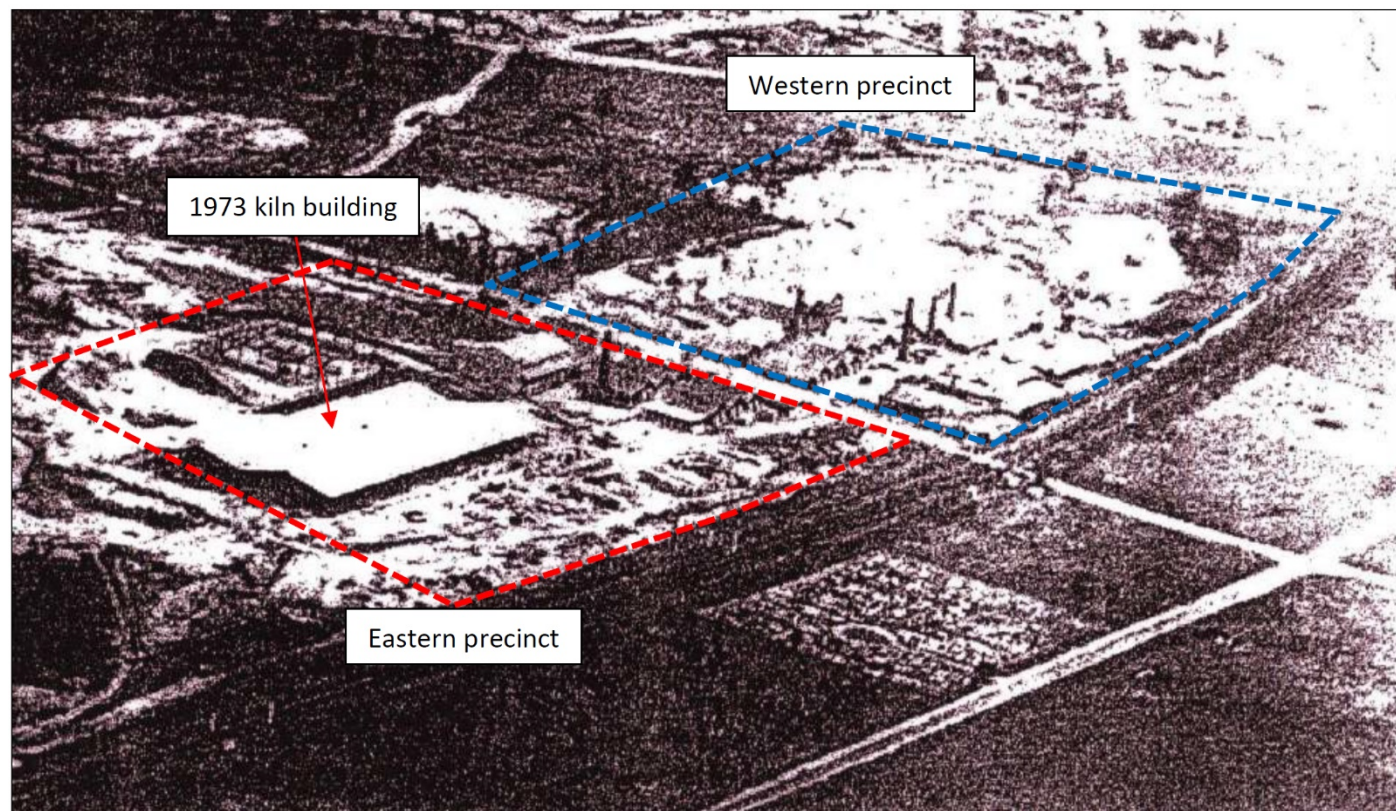


Plate 3.5 View facing southwest across the buildings of Turton's Brickworks, 16 April 1973

The current project area is to the left of frame and not visible

PGH Digital Records, 16 April 1973

Figure 6.1 Image showing original caption indicating the location of Turton's Brickworks is not on the project area.
Umwelt (2018), p. 21



Figure 6.2 Aerial photograph showing the approximate location of SSI 1 compared to SSI 2.
Multiplex, 2019.



Figure 6.3 The approved Stage 1 SS1 Concept (outlined in red) compared to the new SS12 design (outlined in blue). NSW Government, Planning & Environment, Approved Application No. SSI 9022 (07/11/2018).

2.5.1 SSI 9022 Approval Conditions

Consistency with the EIS Concept Proposal and Architectural Design Statement

The design proposal is generally consistent with the massing described in the Concept Design and Architectural Design Statement prepared by fitzpatrick + partners in the EIS. Key developments that alter the building massing and that improve the amenity of visitors and staff are described below:

HEIGHT

Amendment of floor to floor heights and inclusion of previously excluded items from the documentation including rooftop plant

- Slight increase in the overall height of built form

Proposed Massing North Elevation with EIS Envelope overlaid

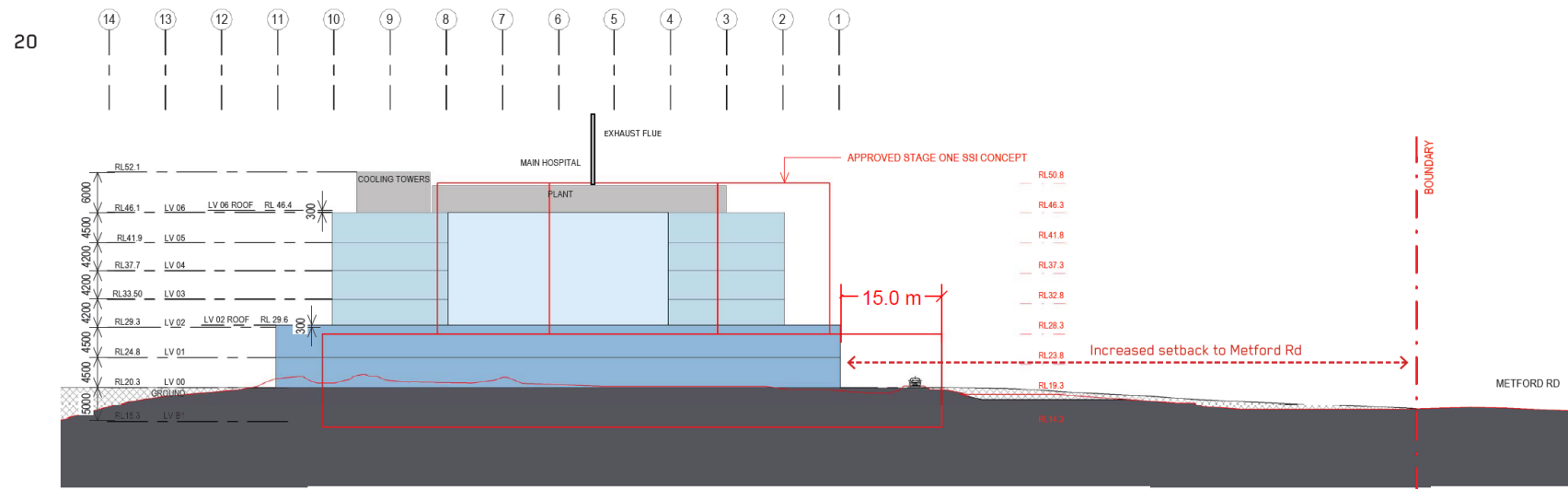


Figure 6.4 Proposed Massing North Elevation with EIS Envelope Overlaid.
Multiplex, 2019

