

## ANNEXURE 1 TRACKS AND ROUTES WITHIN THE PROJECT AREA.

Historic Tracks and routes recorded by KHA within the project study area.

Track name	Notes
Dray Track c1890?	Route
Un-named Track	Track - Probably an SMA track associated with construction/gauging of the Goodradigbee Weir
Bridle Track c1920-60	Foot Track - Early c20th/late c19th bridle track from Cotter Hut-Coolamine via Leura
Bridle Track c1920-70s	Foot Track - Bridle/Foot track during Snowy Scheme; probably early bridle/miners path
Bridle Track c1920-70s	Foot Track - Bridle/Foot track during Snowy Scheme; probably early bridle/miners path
Bridle/Foot Track c1860-1970	Foot Track - Bridle/Foot track during Snowy Scheme; probably early bridle/miners path
Bridle/Foot Track c1860-1970	Foot Track - Bridle/Foot track during Snowy Scheme; probably early bridle/miners path
Bridle Track 1920s-60s	Foot Track - Bridle/Foot track during Snowy Scheme; probably early bridle/miners path
Dray Track c1840-1960s	Foot Track - 1850s Dray track Peppercorn-Currangorambla (Old Currango)
Dray Track c1930-60s	Track - c1930s dray track to Peppercorn Hut
Un-named Track	Track - Dray track to Long Plain House (Cooinbil)
Dray Track c1890-1950s	Foot Track - late C19th(?) bridle (& dray?) track Currango - Cherry Garden - 17 Flat
Un-named Track	Track - Bridle track
Bridle/Dray Track c1890-1940s	Route - Track Old Currango - Cherry Garden
Bridle Track c1890-1950	Route - Trail generally aligns with c1895 dray track Old Currango - Currango
Dray Track	Track - c1850s dray track Currangorambla - Peppercorn
Un-named Track	Route - Probable extension to Cherry Garden - Old Currango track shown on CMA
Un-named Track	Track - Possibly a c1910 access track to Hancox mine
Un-named Track	Track - Mid C20th track follows earlier bridle track to Blue Water Holes
Bridle Track 1920?- 1960s	Foot Track - Southern half evident as worn single rut (early 1990s); route of northern half not explored/certain
Un-named Track	Track
4WD Track c1950-60s	Track - Probably high-level bridle track avoiding wetter track conditions on plain during winter/spring
4WD Track c1950-60s	Track
Bridle Track c1940-50s	Foot Track - Bridle track Currango - Pedens; route uncertain
Dray Track c1880s	Track - c1915 dray track from Currango - Pockets (Aust Estates & MC), probably late C19th bridle track
Track c1890-1960s	Track - c1915 dray track from Currango - Pockets (Aust Estates & MC), probably late C19th bridle track

Track name	Notes
Un-named Track	Track
4WD Track c1960	Track - Probable SMA survey track
Un-named Track	Track
4WD Track c1960	Track - Probable SMA survey track
Dray Track c1930	Track - Probably follows earlier bridle track
Dray Track c1930-60s	Track - Probably follows earlier bridle track
Track c1950-60s	Track
Bridle Track c1880-1940s	Route
Bridle Track c1880-1940	Route - not shown on later Parish Maps
Dray Track c1850-1950	Historical route - C19th dray track from Old Currango to Port Phillip Track and Gulf
Un-named Track	Historical route
Bridle track c1880-1940s	Route
Dray Track c1840-1960s	Track - 1850s Dray Track Peppercorn-Currangorambla (Old Currango)
4WD Track c1980	Track
Dray Track c1850-1950	Route C19th dray track from Old Currango to Port Phillip Track and Gulf
Dray Track c1900?	Track
Track c1955-75?	Track - 4wd track down spur. Evidence visible at each end; not followed.
4WD Track c1990	Possibly illegal fishermen's track or cave access
Leura Gap Trail c1960s	Foot Track - 1960s f/t possibly follows early stock route
Leura Gap Trail c1920-80	Foot Track - 1960s f/t follows early stock/bridle route Cotter Hut-Coolmine
Un-named Track	Clearing/trail below main track ?
Un-named Track	Track - Spencers Hut access - approximate location
Un-named Track	Route - Black Mt Mine access - approximate location
Kiandra Road 1850-90	Track - c1850s road Kiandra-Rules Point-Tumut
Dray Track/Stock route 1881-1940s	Route
Dray Track/Stock route 1881-1940s	Route - Main track & stock route Long Plain - Brindabella
Un-named Track	Route
Dray Track/Stock route 1881-c1940	Route
Stock route/Bridle Track 1870-90s	Historical route - Stock route Tumut to Yarrangobilly up to 1890
Bridle Track c1870-1910	Historical route Not shown on parish map 1922
Bridle Track c1890-1920	Historical route
Bridle Track c1890-1920	Historical route
Bridle Track c1920-1960s	Foot Track - approximate location - possibly aligns to current bridle track - not investigated
Bridle Track c1920-40s	Route
Dray Track/Stock route 1881-1970	Track - Main track & stock route Long Plain - Brindabella



Track name	Notes
Dray Track/Stock route c1940s-1970	Track
Un-named Track	Track
Dray Track c1930-60	Track - Probably aligns to earlier bridle track
Dray Track c1930-60	Track
Kiandra Rd 1850-90 Stock route 1850-1970	Track - c1850s road Kiandra-Rules Point-Tumut
Un-named Track	Track
Un-named Track	Track
Track c1970s	Track - Possibly follows earlier track to c1880 Long Plain Station
Bridle/dray Track c1880-1950s	Historical route - approximate route bridle/dray track linking Tantangara-Long Plain Stations
Survey Track c1960	Track
Survey Track c1960	Track
Un-named Track	Track
Un-named Track	Track
Track c1950s	Track
Bridle Track c1920-1960s	Foot Track - approximate location - possibly aligns to current bridle track - not investigated
Bridle Track c1920-1960s	Foot Track - approximate location - possibly aligns to current bridle track - not investigated
Un-named Track	Track
Un-named Track	Track
Track c1950-60s	Track
Kiandra-Tantangara Dray Track c1850-1960s	Track
Track c1930-60s	Track
Dray Track c1850-1950s	Route - Dray Track c1850-1950s
Un-named Track	Unsealed Road - Tantangara SMA Camp
Un-named Track	Unsealed Road - Tantangara SMA Camp
Un-named Track	Unsealed Road - Tantangara SMA Camp
Un-named Track	Track - Tantangara SMA Camp
Track c1920-60s	Track
Un-named Track	Track
Bridle Track 1890-1960s	Foot Track
Un-named Track	Foot Track
Bridle Track 1950-60s	Foot Track
Track c1920-60s	Foot Track
Un-named Track	Track
Un-named Track	Foot Track
Un-named Track	Track
Un-named Track	Track
Commissioners Gully Track	Track
Track 1920-30s	Route - mostly tracked GPS
Track c1860?-1960s	Track
Bridle Track c1920-60s	Foot Track
Bridle Track c1920-60s	Foot Track

Track name	Notes
Bridle Track c1920-60s	Foot Track
Un-named Track	Foot Track
Dray Track/Stock Route 1917-60	Track
Un-named Track	Unsealed Road - Tumut Ponds SMA Camp
Un-named Track	Track - Cabramurra Township
Un-named Track	Foot Track - Cabramurra Township
Un-named Track	Foot Track
Un-named Track	Track - Powerline Track - Cabramurra Township
Un-named Track	Unsealed Road - Tumut 1
Un-named Track	Foot Track - Tumut 1
Un-named Track	Unsealed Road - Tumut 1
Un-named Track	Unsealed Road - Tumut 1
Un-named Track	Unsealed Road - Tumut 1
Un-named Track	Unsealed Road - Tumut 1
SMA Track c1950-60s	Foot Track - Tumut 1
SMA Bridle Track c1950-60s	Foot Track - Tumut Ponds
Un-named Track	Unsealed Road
Un-named Track	Foot Track
Bridle Track c1950-60s	Foot Track
Dray Track c1890	Track
Un-named Track	Foot Track
Un-named Track	Foot Track
Miners/Bridle Track 1890s Stock Route 1917-60	Track
Survey (?) Track c1950-60	Track
Un-named Track	Track
Un-named Track	Track
Un-named Track	Track
Un-named Track	Foot Track
Un-named Track	Track
Un-named Track	Foot Track
3 Mile Track c1860s-1960s	Unsealed Road
Bridle Track c1920-70s	Foot Track
Un-named Track	Route
Bridle Track c1910-60	Foot Track
Bridle track c1900	Historical route
Bridle track c1900	Historical route
Un-named Track	Unsealed Road
Track c1960s	Track
4WD Track c1958	Track
4WD Track c1955	Track
Un-named Track	Track
Un-named Track	Track - Track c1960
Track c1960	Track
Road c1955	Track
Un-named Track	Track

---

*New South Wales Archaeology Pty Ltd*      *September 2019*      *page 620*

Track name	Notes
Un-named Track	Track
Un-named Track	Track
Un-named Track	Track
Un-named Track	Track
Un-named Track	Track
Un-named Track	Track
Un-named Track	Track
Un-named Track	Unsealed Road
Un-named Track	Track - Lobs Hole
Un-named Track	Track
Un-named Track	Track
Un-named Track	Unsealed Road
Un-named Track	Track
Un-named Track	Unsealed Road
Un-named Track	Unsealed Road
Bridle Track	Foot Track
Survey Track 1950-60	Track - SMA hydrological survey track c1960
Survey Track 1950-60	Track - SMA survey track c1960; Stream Guage on Pinchgut
Un-named Track	Unsealed Road
Un-named Track	Track
Un-named Track	Track
Un-named Track	Track
Un-named Track	Track
Un-named Track	Track
Un-named Track	Track
Un-named Track	Track - Speculative alignment
Un-named Track	Foot Track
Un-named Track	Track
Un-named Track	Track
Un-named Track	Foot Track
Bridle Track c1910-40	Route
Un-named Track	Foot Track
Powerline Track	Track
Un-named Track	Track
Un-named Track	Track
Un-named Track	Track
Un-named Track	Track
Survey (?) Track c1950-60	Track
Dray Track c1890-1960	Track
Dray Track c1890-1960	Track
Un-named Track	Foot Track
Bridle Track c1960	Foot Track
Bridle Track c1850	Foot Track
Stockroute 1877	
Un-named Track	Foot Track
Un-named Track	Track

Track name	Notes
Bridle Track c1850 Stockroute 1877	Track
Un-named Track	Track
Un-named Track	Track
Un-named Track	Unsealed Road
Un-named Track	Unsealed Road - Original Snowy Mts Hwy alignment
Un-named Track	Track
Un-named Track	Track
Un-named Track	Track
Un-named Track	Unsealed Road - Original Snowy Mts Hwy alignment
Track c1930s	Route
Track c1930s	Route
Track c1930s	Route
Dray Track/stockroute c1890-1960s	Track
Track c1930s	Route
Track c1930s	Route
Track c1930s	Route
Track c1930s	Route
Un-named Track	Track
Un-named Track	Track
Un-named Track	Track
Un-named Track	Track
Un-named Track	Track
Un-named Track	Track
Un-named Track	Track
Un-named Track	Track
Un-named Track	Track
Un-named Track	Track
Un-named Track	Track
Bridle Track c1890s	Track
Bridle Track / Stock route c1890	Route
Kiandra - Rules Point Rd c1890-1960	Unsealed Road
Un-named Track	Track
Racecourse	Route
Bridle track 1890-1960s	Foot Track
Un-named Track	Track
Dray Track c1890-1950s	Route
Old Kiandra Road c1850- 1960	Unsealed Road
Un-named Track	Unsealed Road - Old Kiandra Road c1850-1960
Track c1940	Track
Un-named Track	Foot Track
Bridle Track c1890-1920s	hroute
Bridle Track c1880-1940	Route
Track c1960	Track

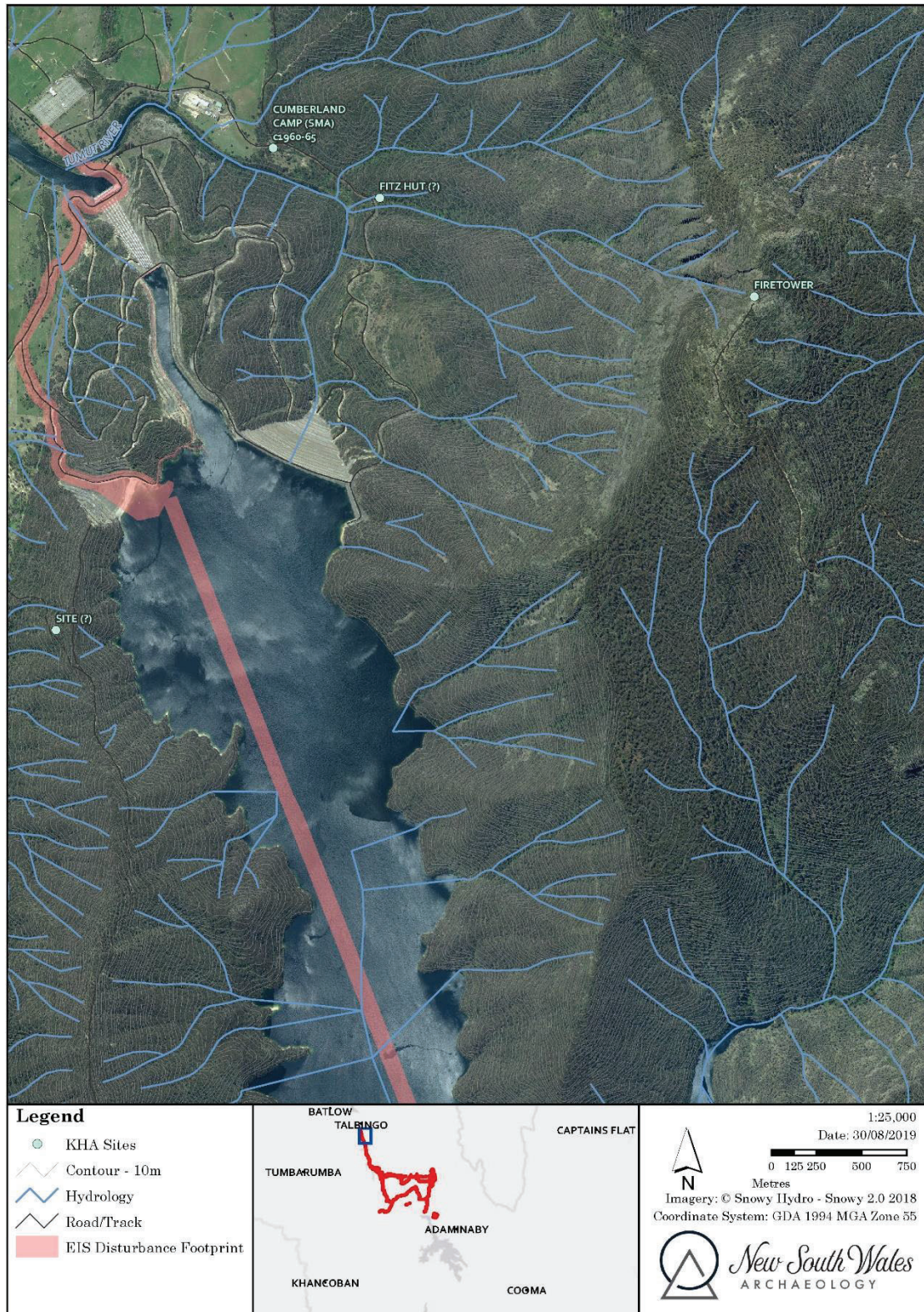
Track name	Notes
Un-named Track	Route
Bridle Track c1940s	Route
Un-named Track	Route
Un-named Track	Track
Bridle Track C19th?	Route
Un-named Track	Track
Un-named Track	Track
Un-named Track	Route
Un-named Track	Track c1960
Un-named Track	Track
Un-named Track	Track
Rd c1860	Historical route - c1860 Yarrangobilly Road
Un-named Track	Route
Un-named Track	Route
Un-named Track	Track
Un-named Track	Track
Un-named Track	Route
Un-named Track	Unsealed Road
Snowy Mts Hwy 1950s-70s	Unsealed Road
Un-named Track	Unsealed Road
Un-named Track	Track
Un-named Track	Track
Un-named Track	Track
Un-named Track	Foot Track
Un-named Track	Track
Bridle Track c1920-60s	Foot Track
Un-named Track	Track
Un-named Track	Track
Un-named Track	Unsealed Road
Snowy Mts Hwy 1890-1970	Unsealed Road
Un-named Track	Unsealed Road
Un-named Track	Unsealed Road
Un-named Track	Unsealed Road
Un-named Track	Unsealed Road
Un-named Track	Track
Un-named Track	Unsealed Road
Un-named Track	Unsealed Road
Snowy Mts Hwy 1890-1940	Route
Un-named Track	Track
Un-named Track	Track
Track 1960s	Track
Un-named Track	Track
Un-named Track	Track
Un-named Track	Track
Foot/Bridle Track	Foot Track
Un-named Track	Track
Bridle Track 1940s?	Foot Track
Un-named Track	Track



Track name	Notes
Un-named Track	Track
Un-named Track	Track
Denison - Kiandra Rd 1860s	Route
West Denison Surveyed Streets	Historical route
Un-named Track	Route
Un-named Track	Route
Un-named Track	Track
Un-named Track	Track
Bridle Track 1870s-1940s	Route
Un-named Track	Route
Powerline Track c1960	Route
Un-named Track	Track
SGS Track c1955	Track
Track ?	Track
Un-named Track	Unsealed Road
Un-named Track	Track
Kiandra-Tumut Rd 1860-1970	Unsealed Road
Un-named Track	Track
Un-named Track	Track
Kiandra-Tantangara Track c1850	Track
Un-named Track	Track
Un-named Track	Track
Un-named Track	Track
Un-named Track	Track
Un-named Track	Track
Un-named Track	Track
Un-named Track	Track
Track 1940s	Route
Denison - Kiandra Rd c1860-1930	Route
Un-named Track	Track
Un-named Track	Route
Un-named Track	Foot Track
3 Mile Track 1860s-1940	Route
Un-named Track	Foot Track
Un-named Track	Route
Track 1940s-60s	Track
Un-named Track	Foot Track
Un-named Track	Foot Track
Un-named Track	Track
3 Mile Camp Rd 1950s	Unsealed Road
Un-named Track	Unsealed Road
Un-named Track	Unsealed Road
Un-named Track	Unsealed Road

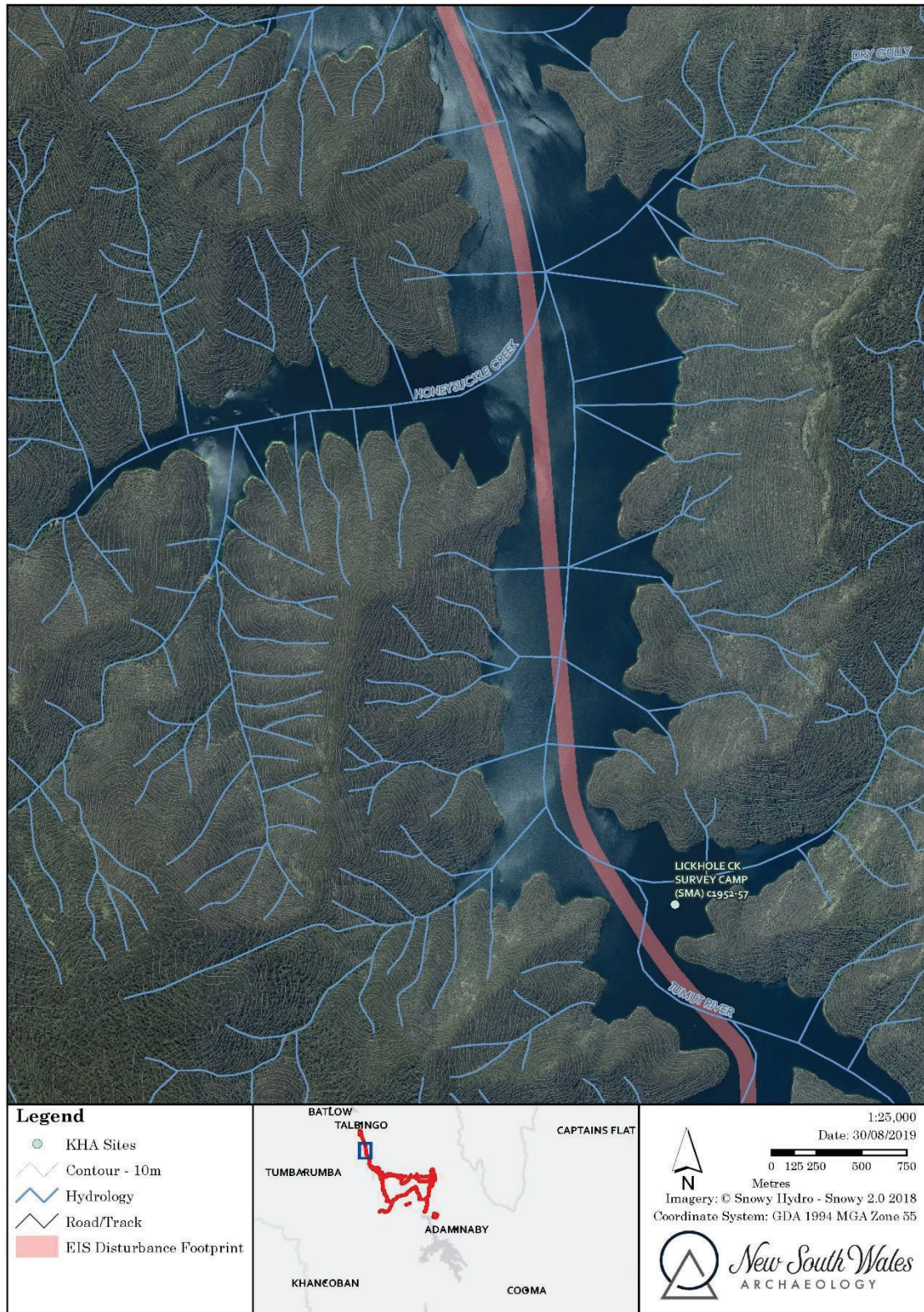
Track name	Notes
Un-named Track	Route
Un-named Track	Route
Un-named Track	Route
Bridle Track c1890-1960	Foot Track
Bridle Track c1890-1960s	Foot Track
Un-named Track	Foot Track
Un-named Track	Route - Lorna Doone
Lorna Doone Track 1920s	Route

## ANNEXURE 2 MAPPING: HISTORIC HERITAGE ITEMS: KHA LIST



Talbingo Dam





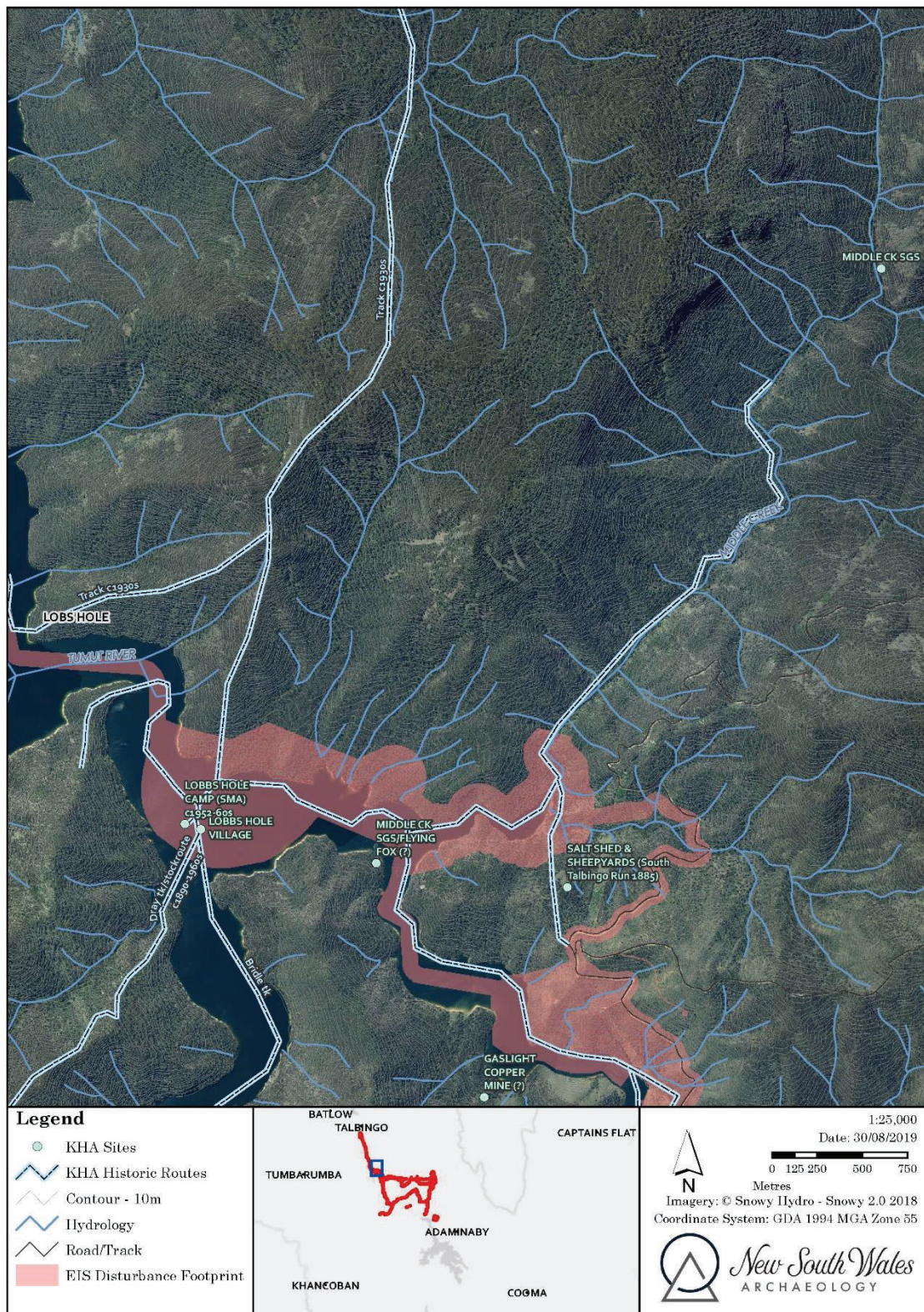
Talbingo Dam





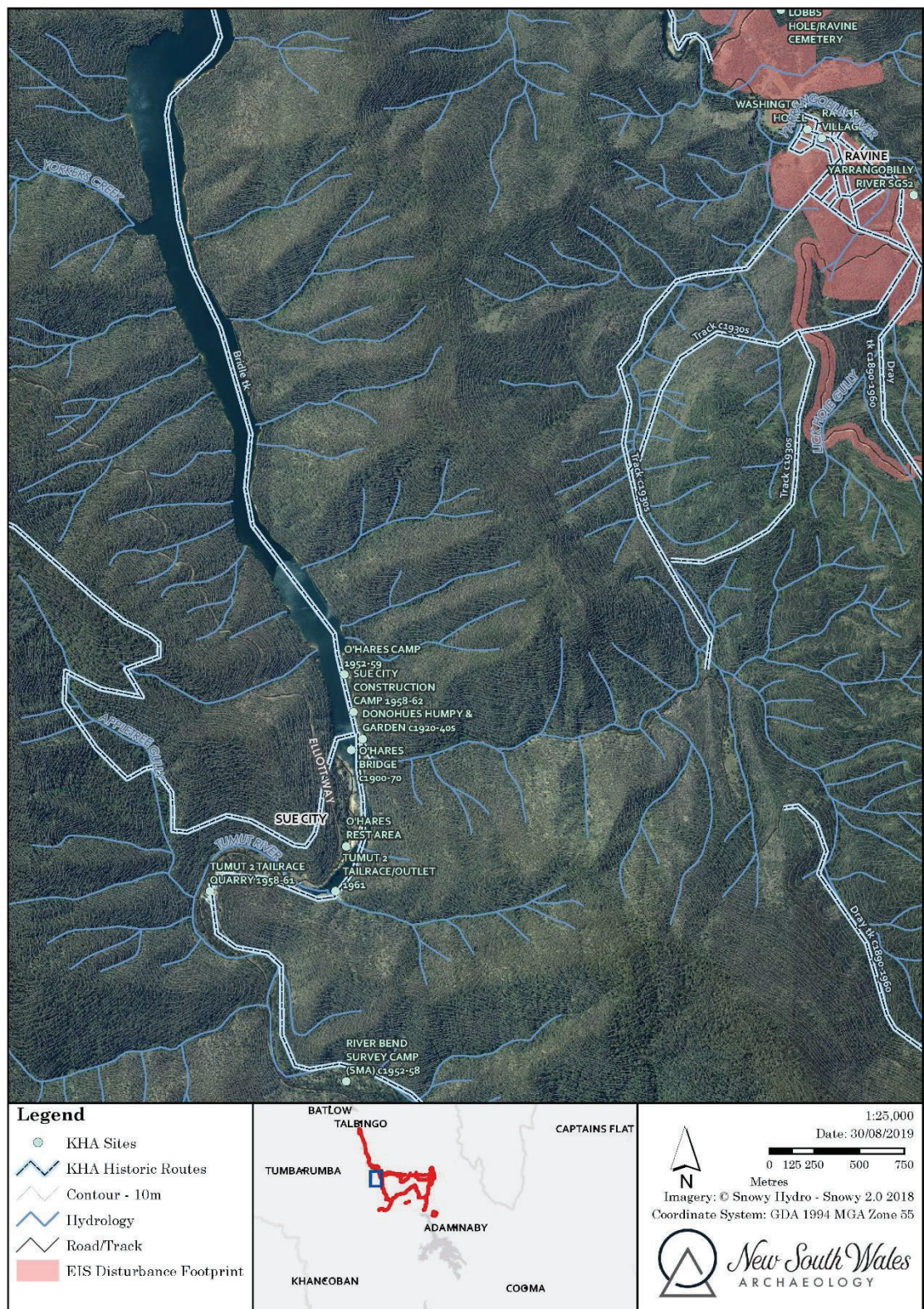
## Talbingo





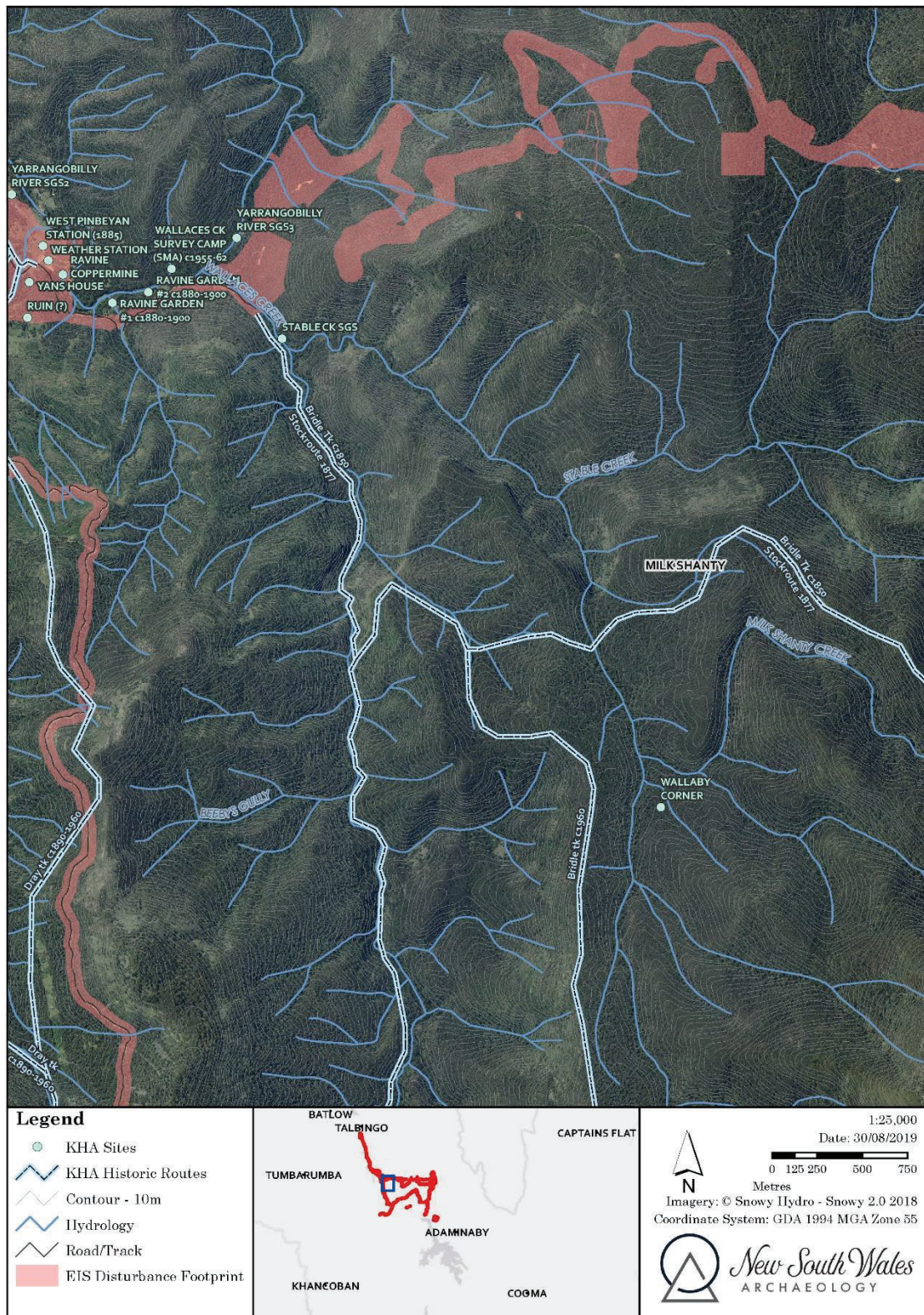
## Talbingo





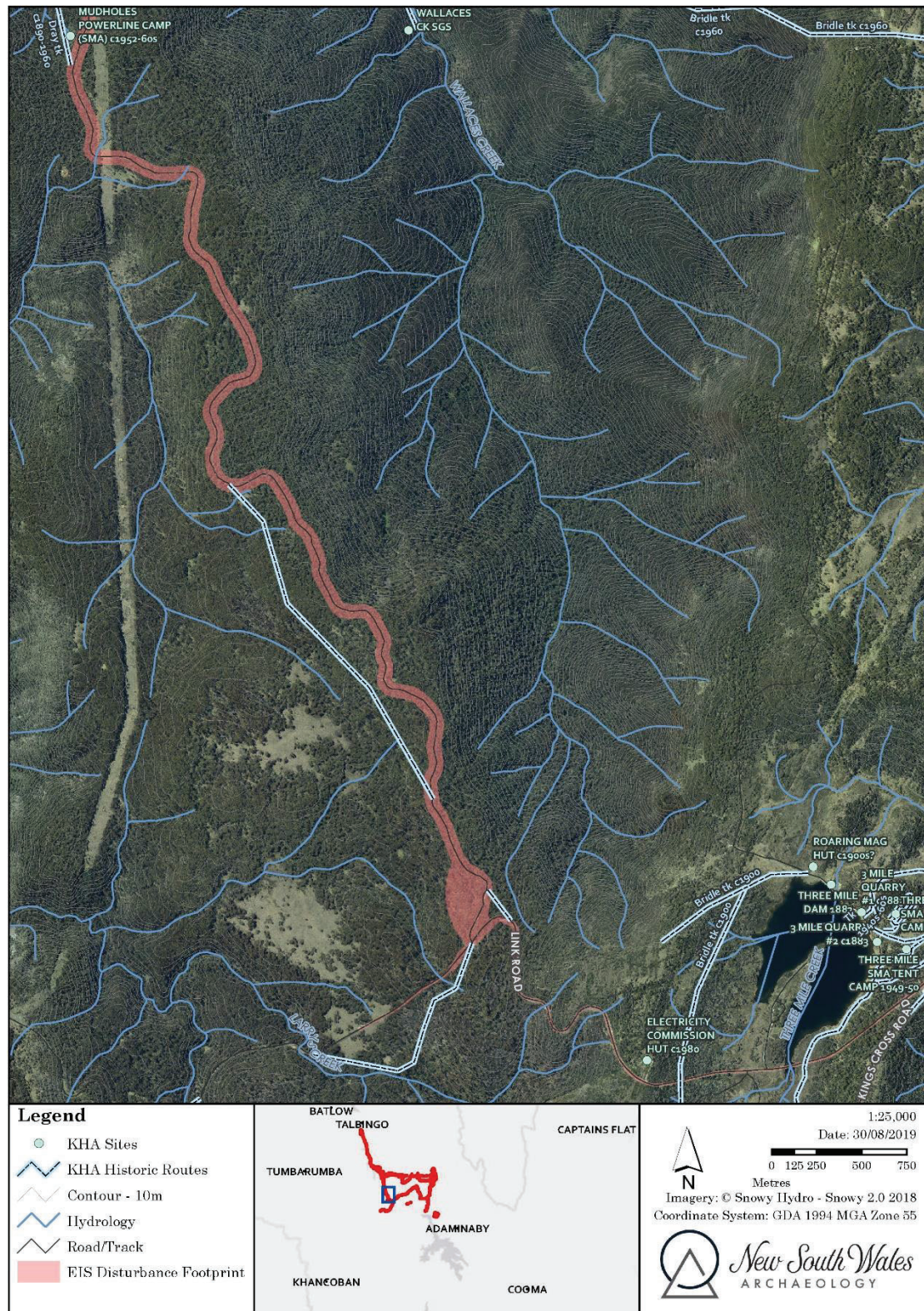
Lobs Hole Ravine





Lobs Hole Ravine





Lobs Hole Road





Marica





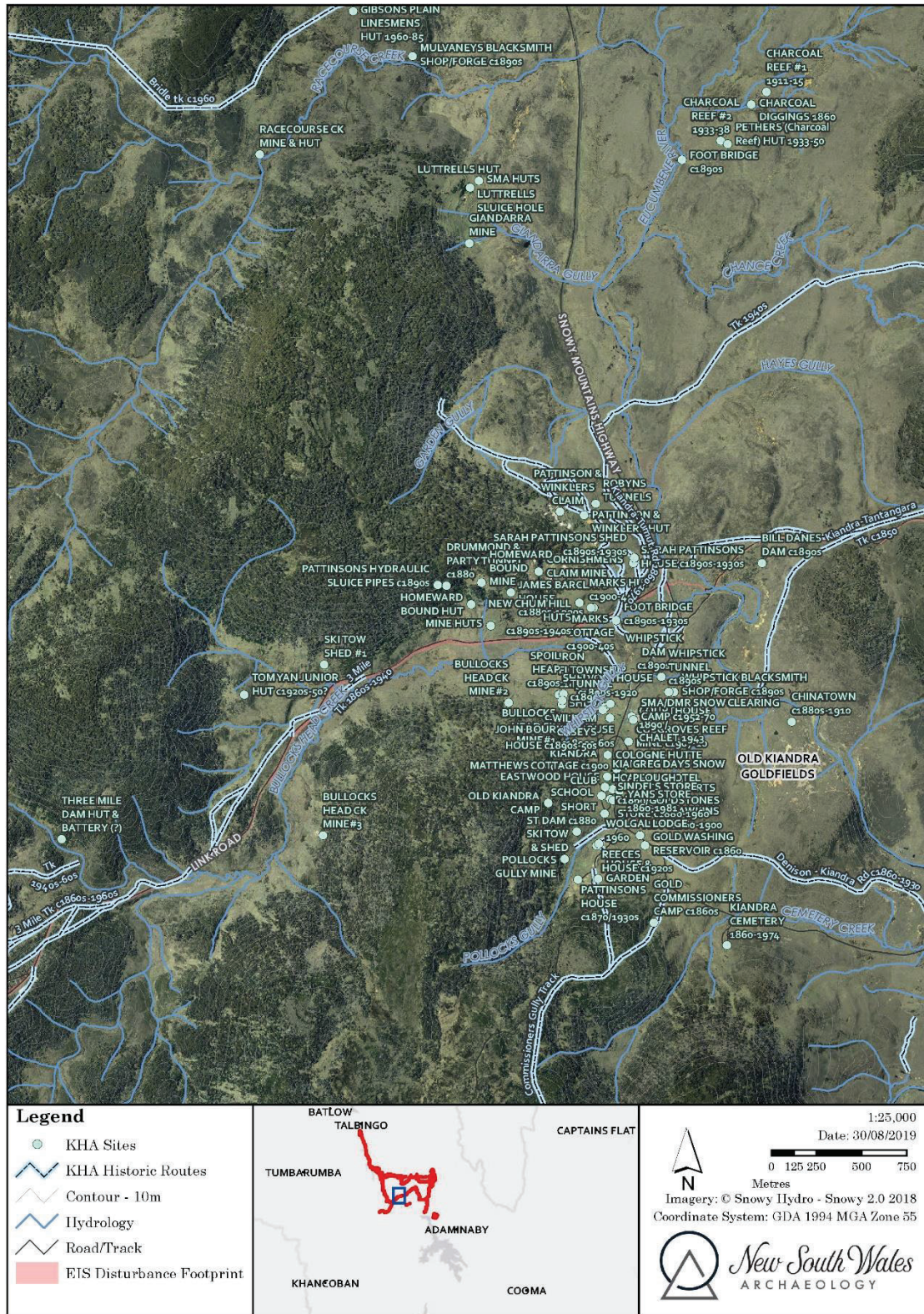
Kings Cross Road





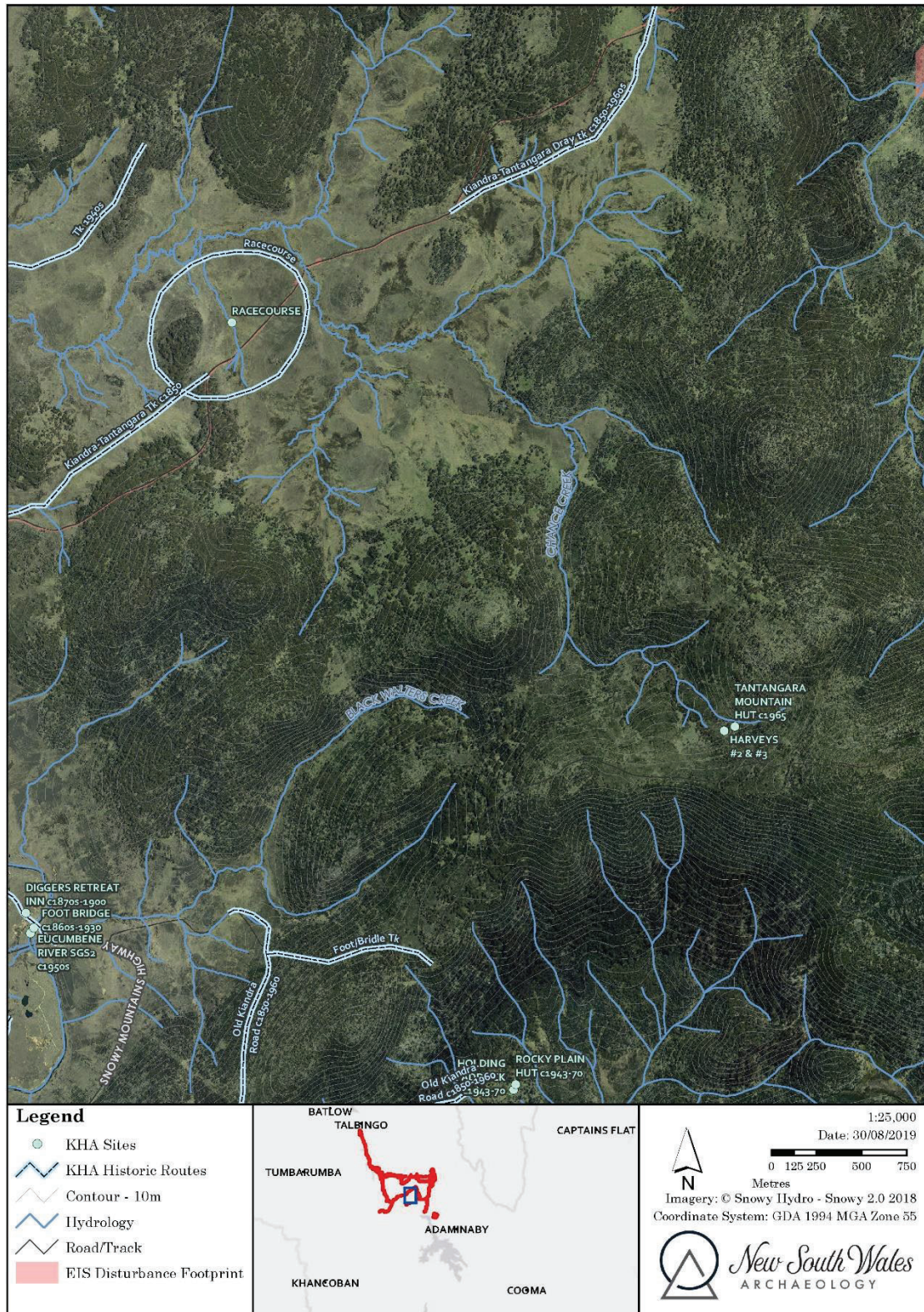
Kings Cross Road





## Link Road and Kiandra





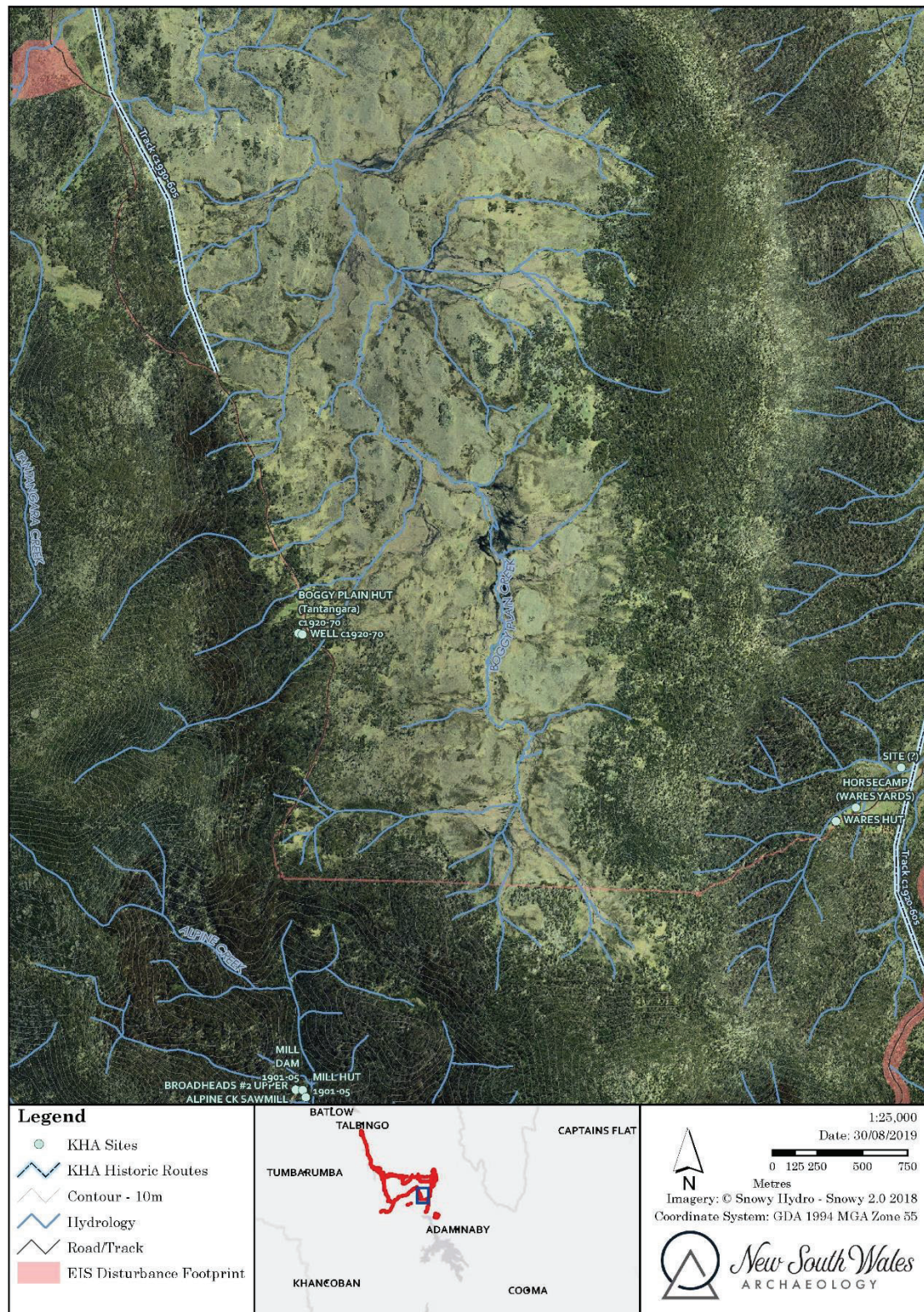
Nungar Creek Trail





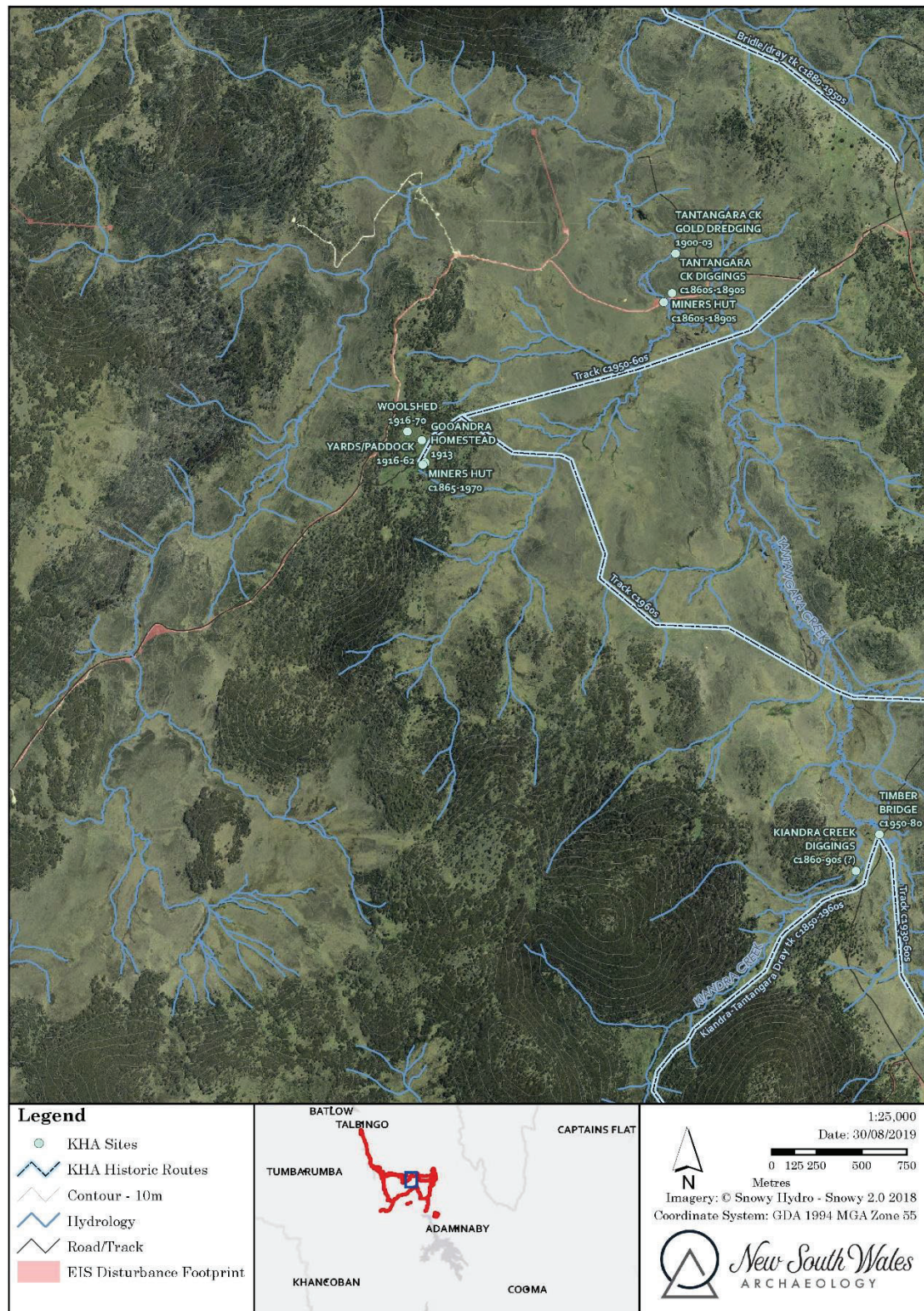
## Rocky Plains





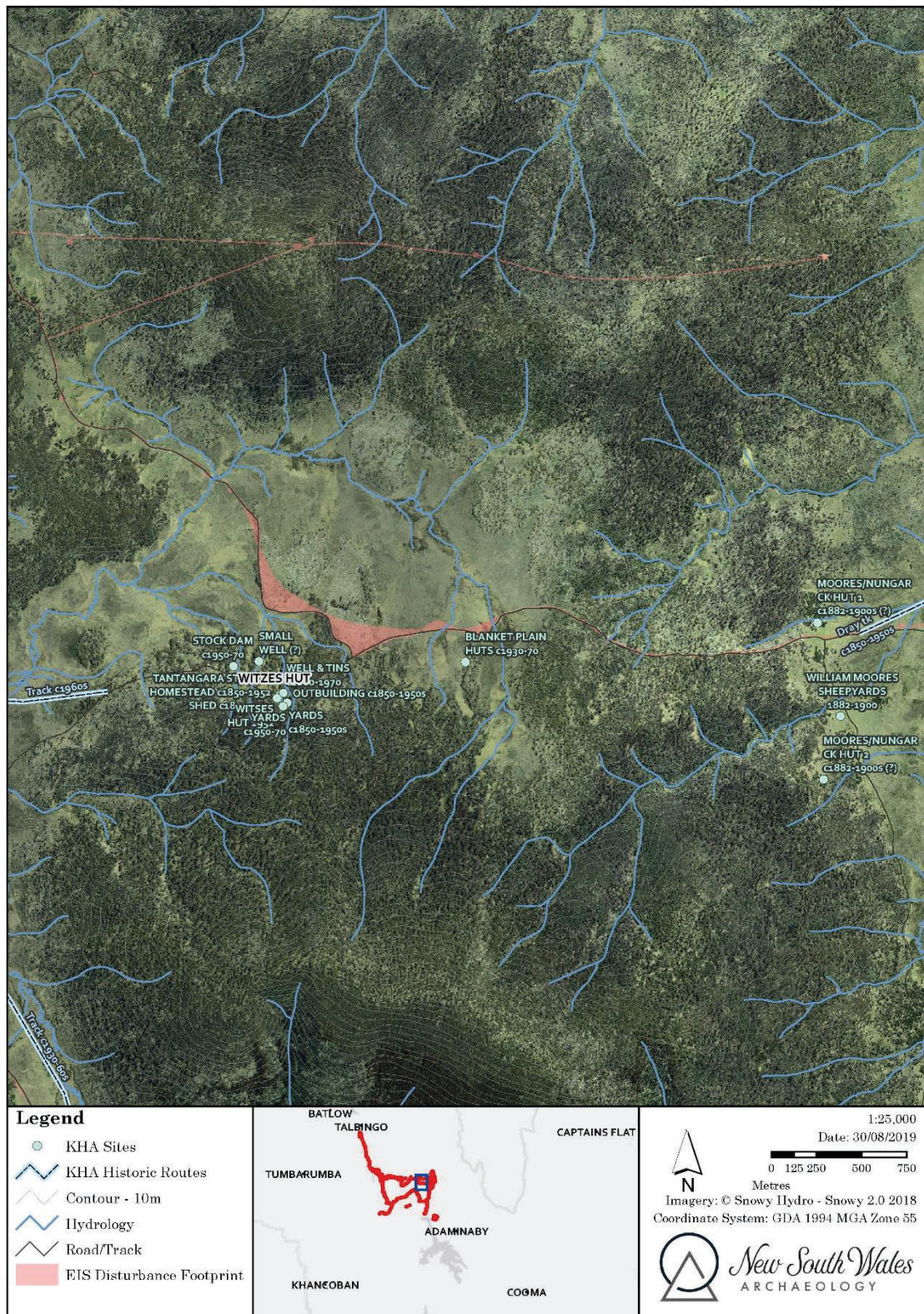
Nungar Creek Trail





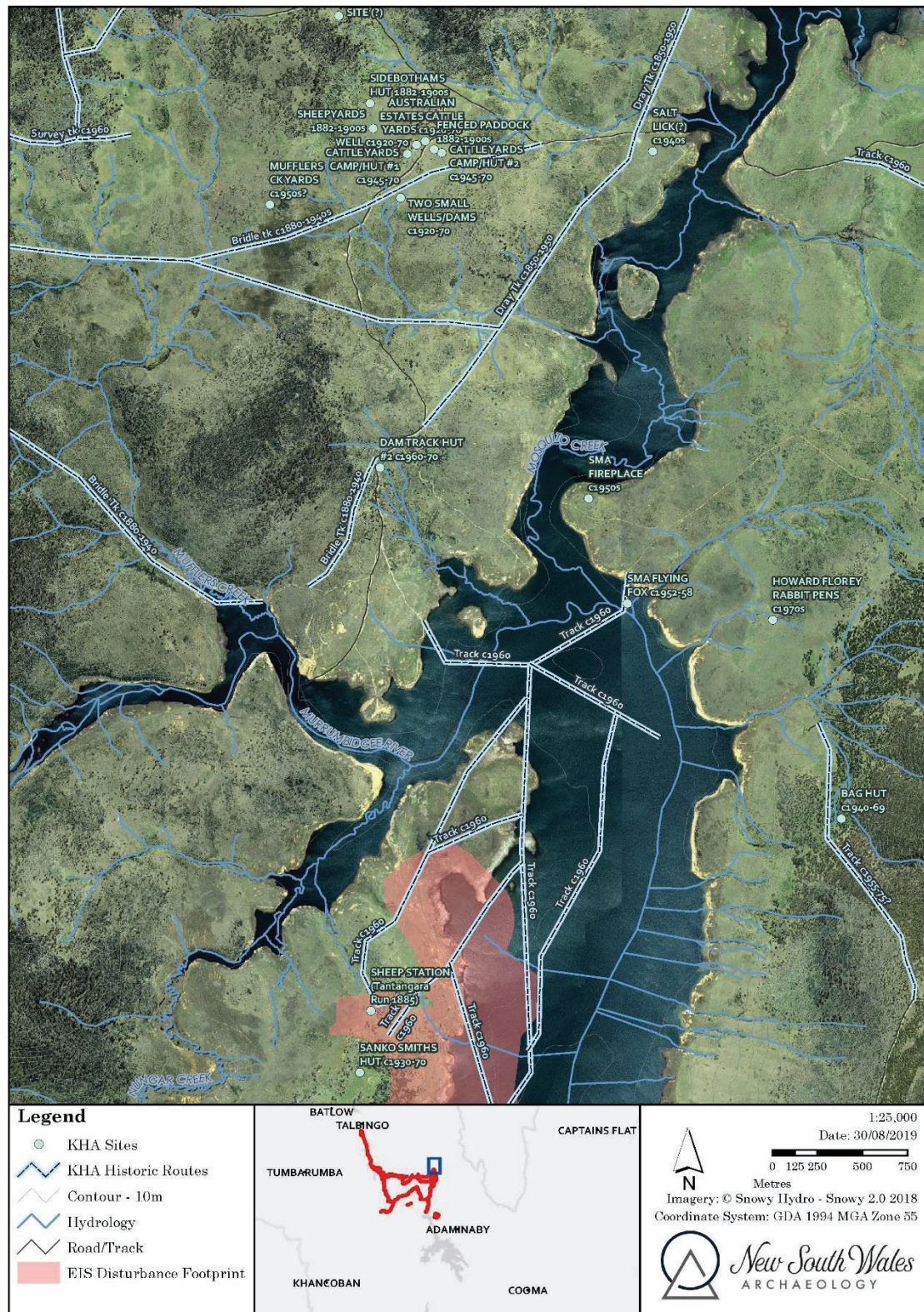
Gooandra Fire Trail





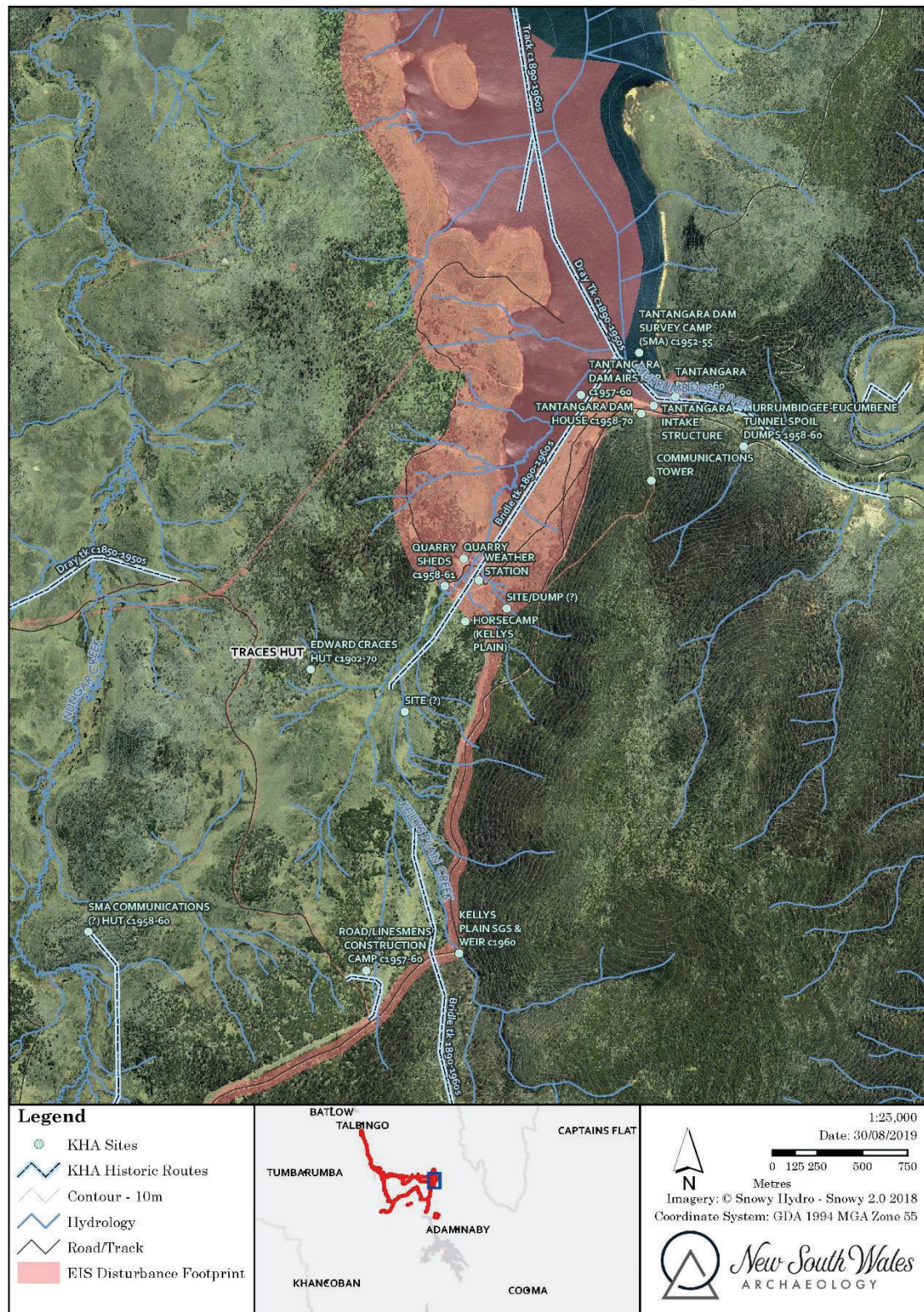
Nungar Creek Fire Trail





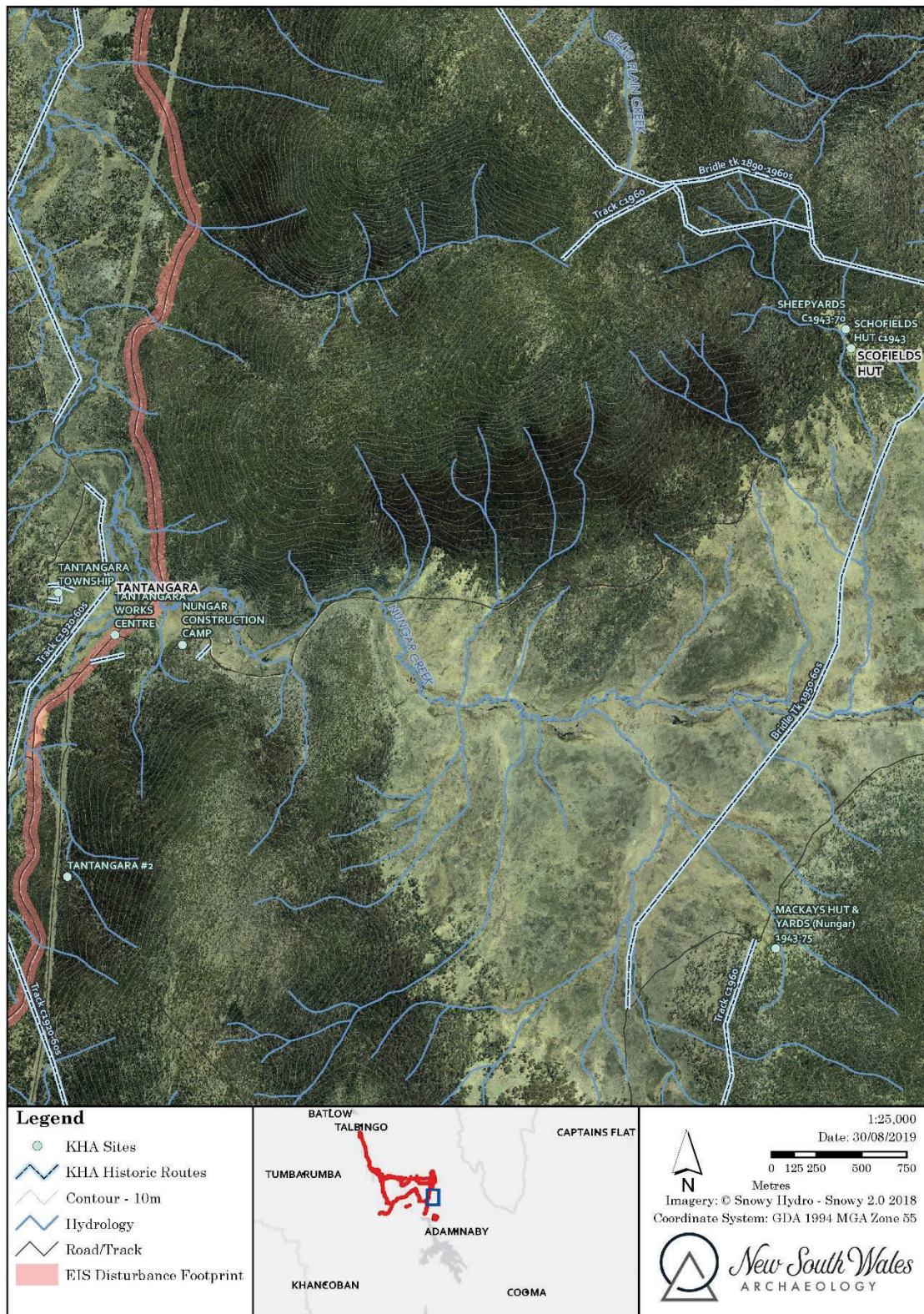
## Tantangara Dam





Tantangara Dam





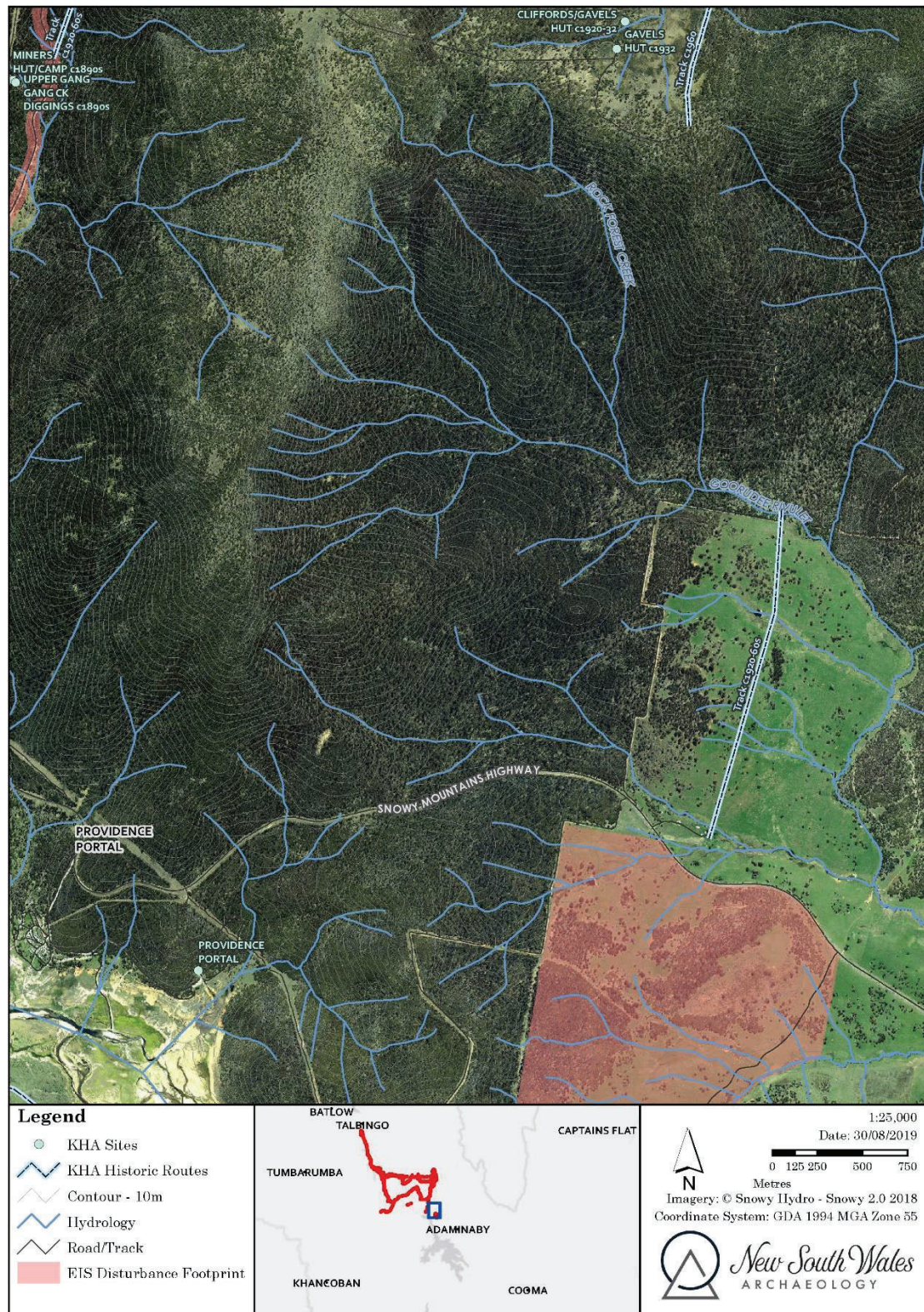
Tantangara Road





Denison and Tantangara Road

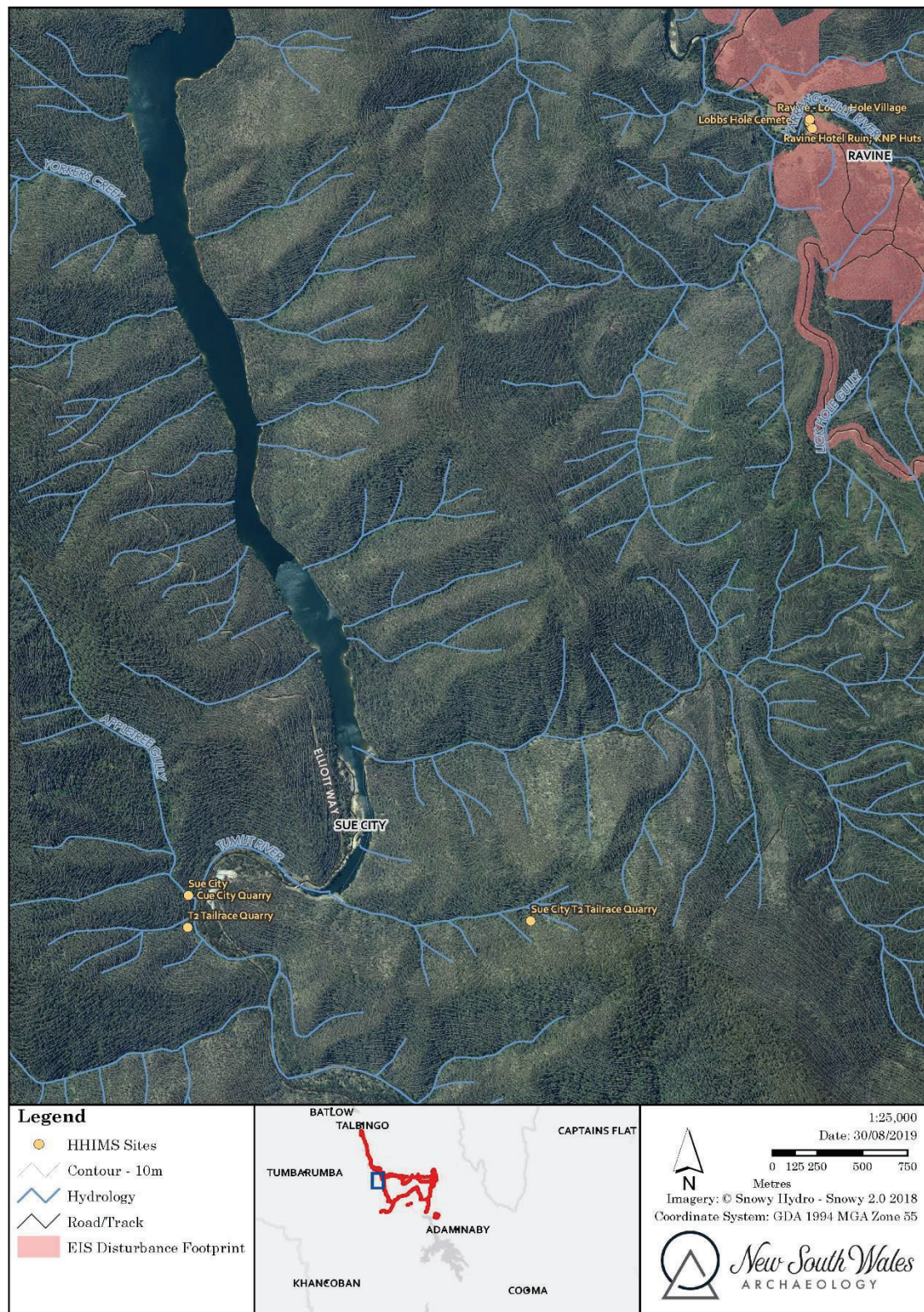




## Rock Forest

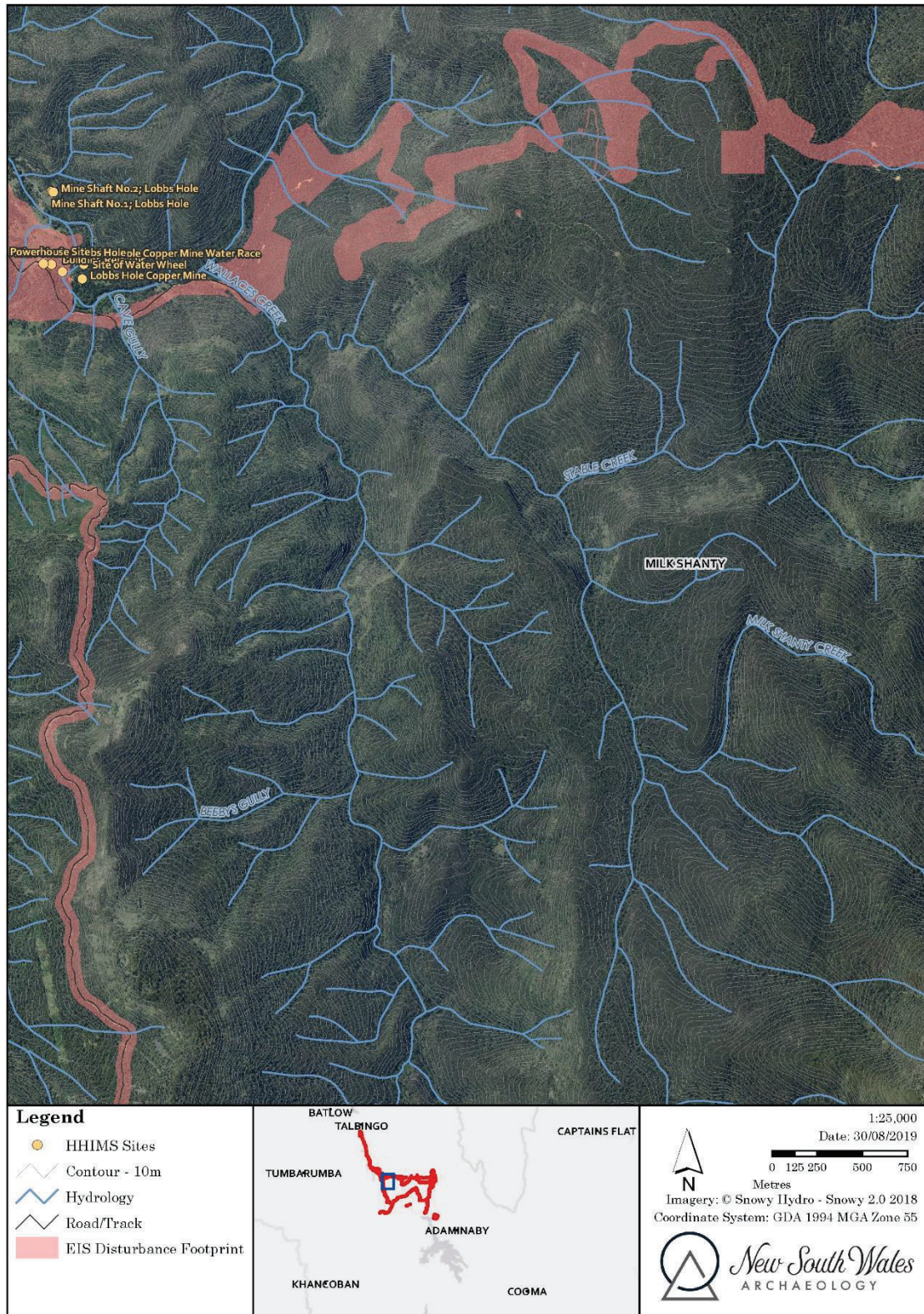
## ANNEXURE 3 MAPPING: HISTORIC HERITAGE ITEMS HHIMS LIST





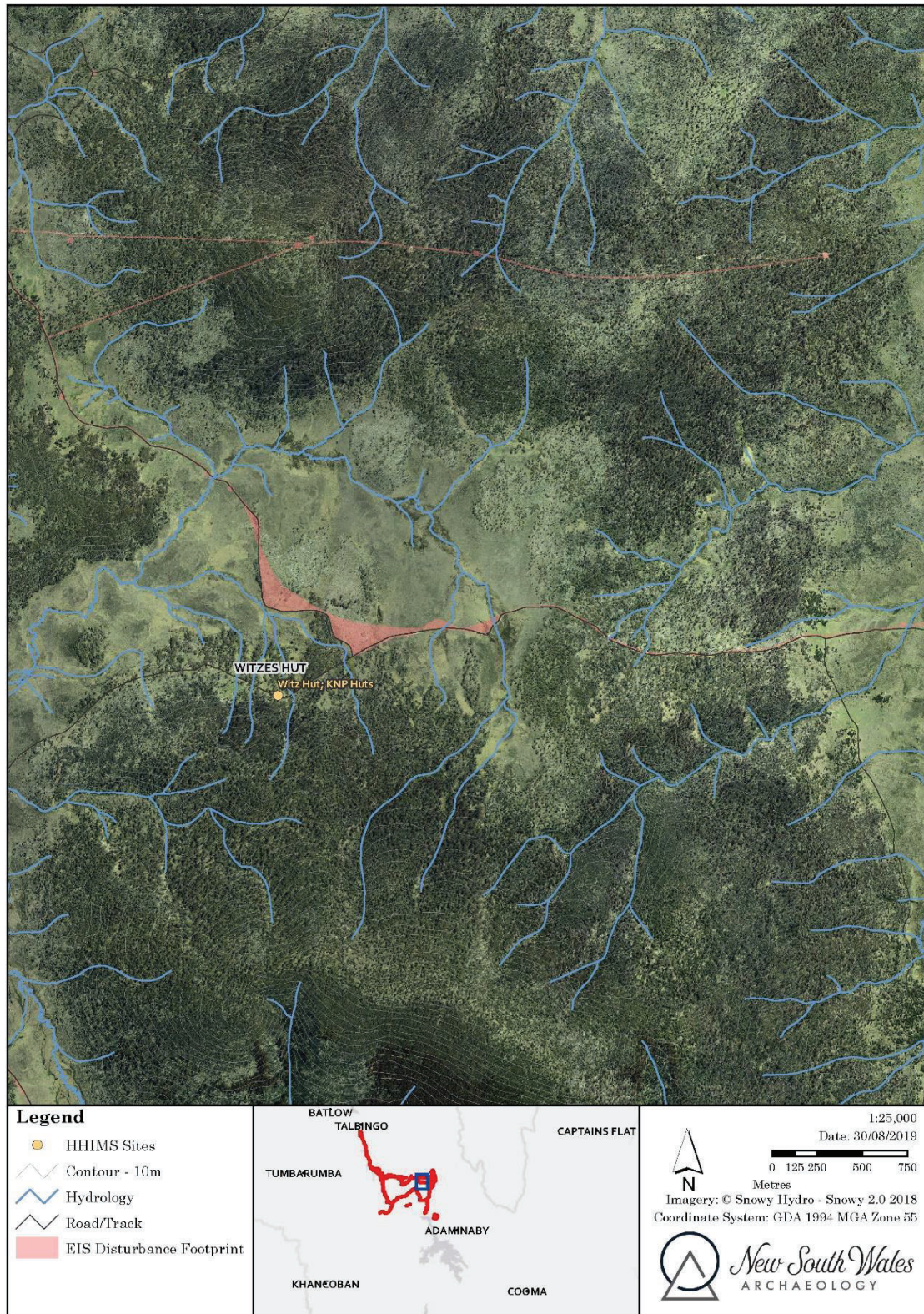
## Lobs Hole Ravine





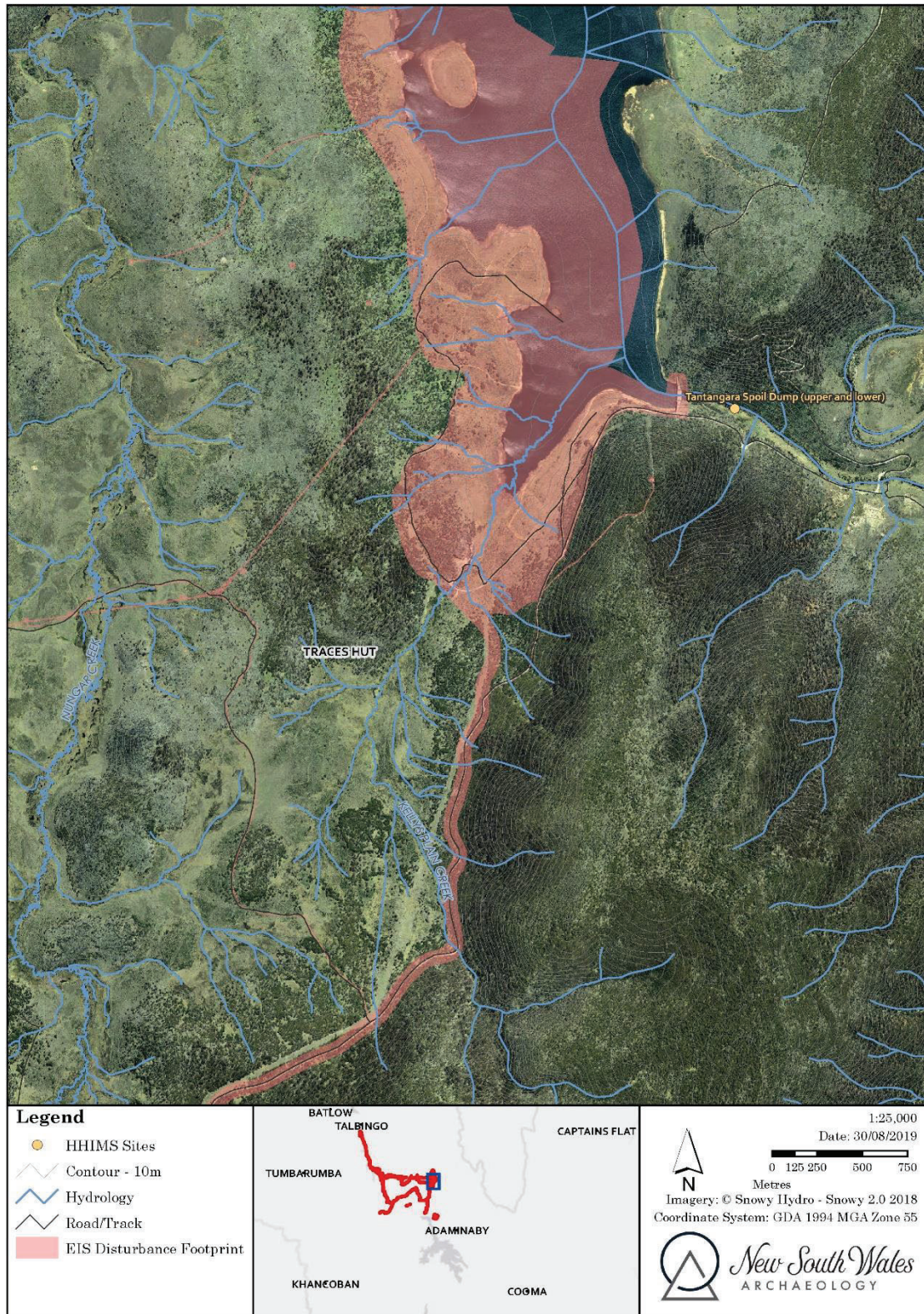
## Lobs Hole





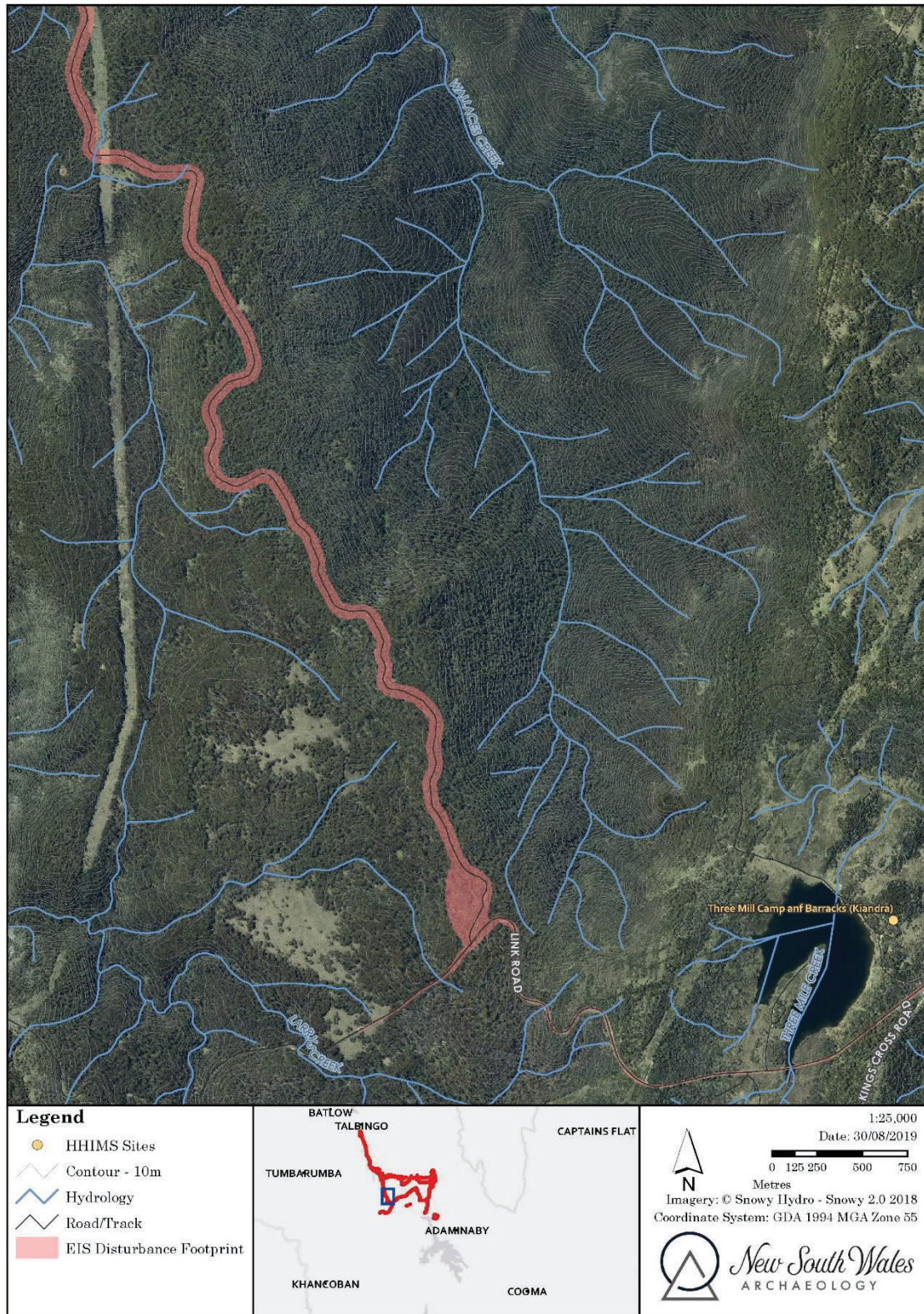
## Nungar Creek Fire Trail





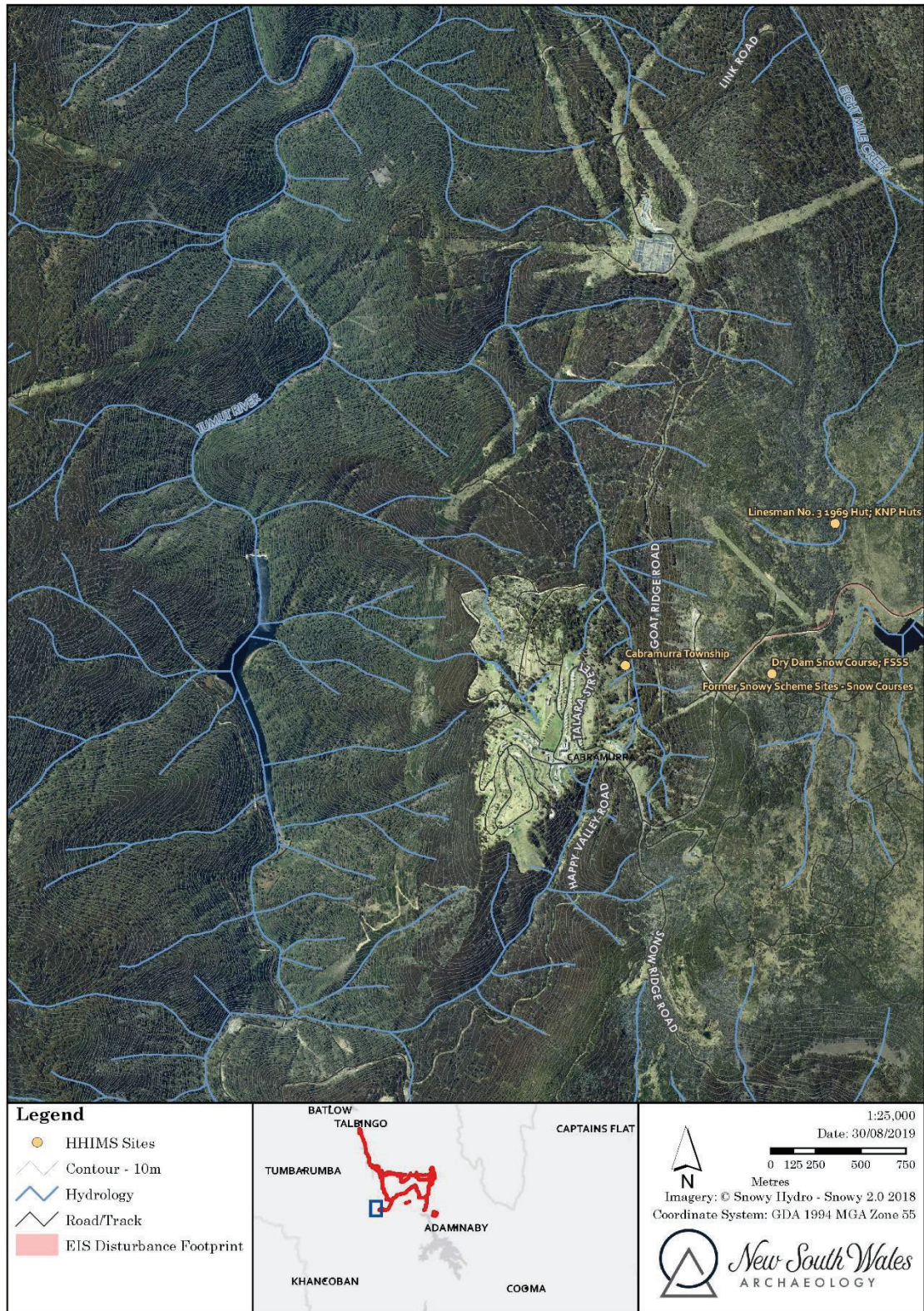
## Tantangara Dam





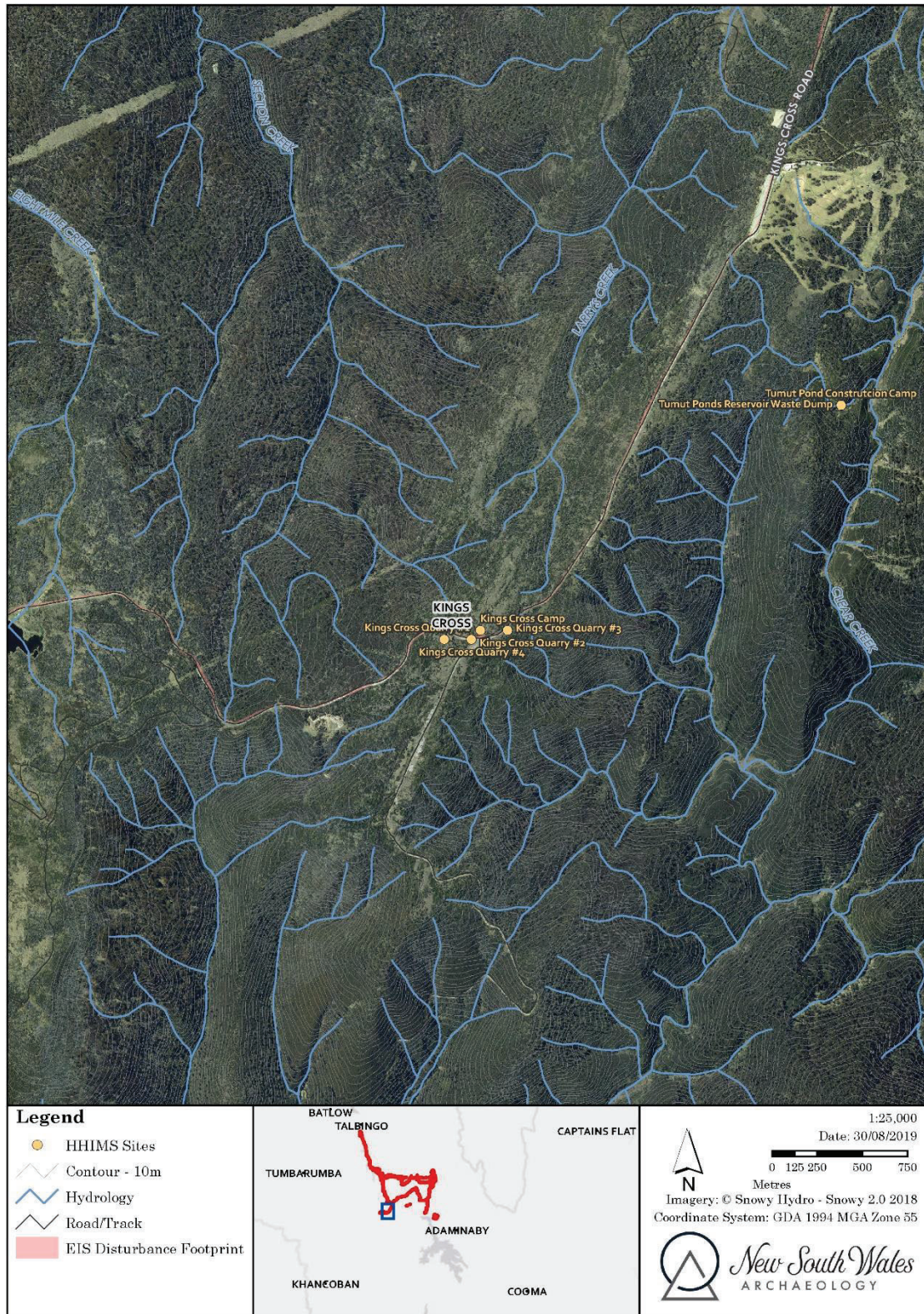
## Lobs Hole Road and Three Mile Dam





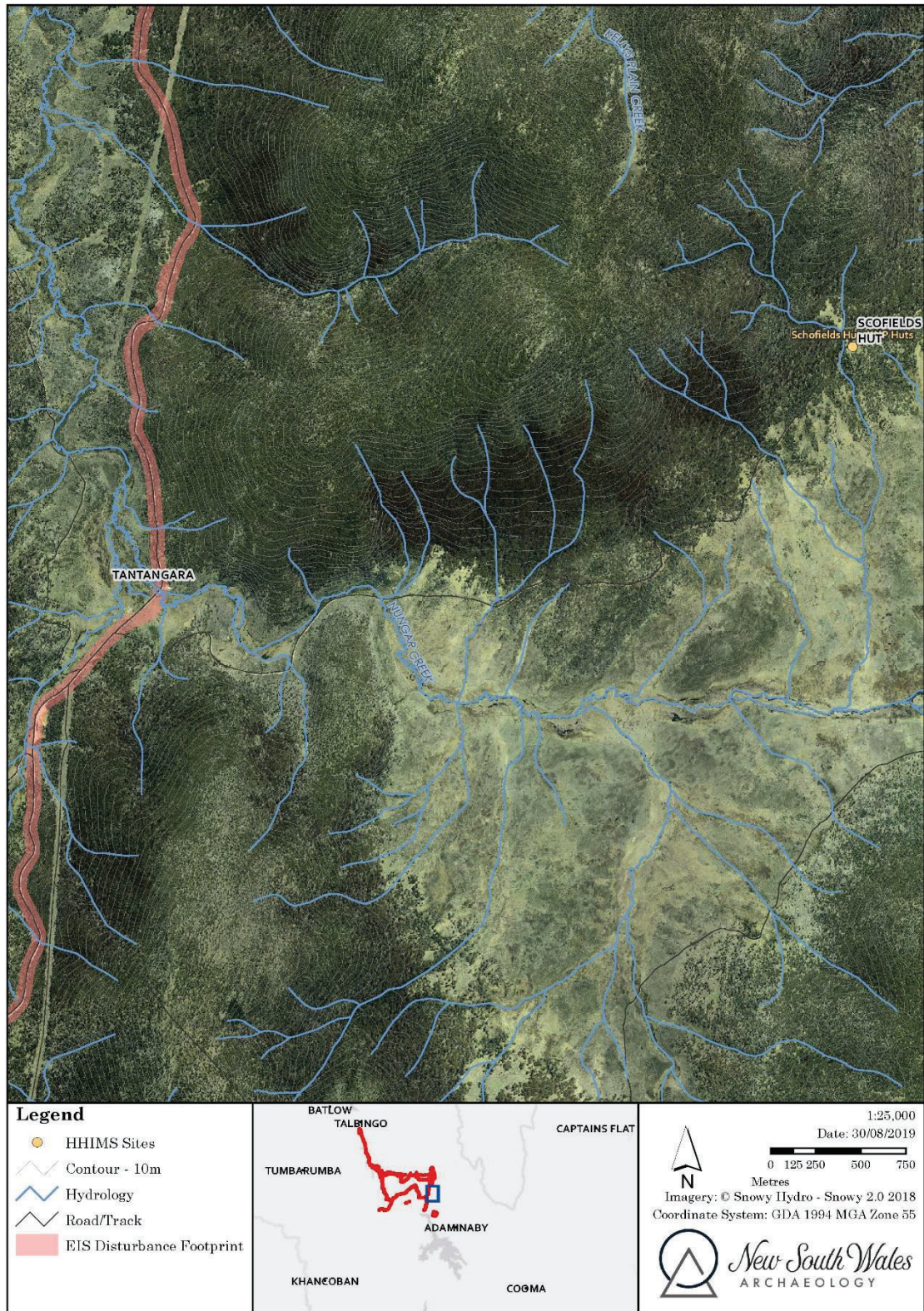
## Kings Cross Road





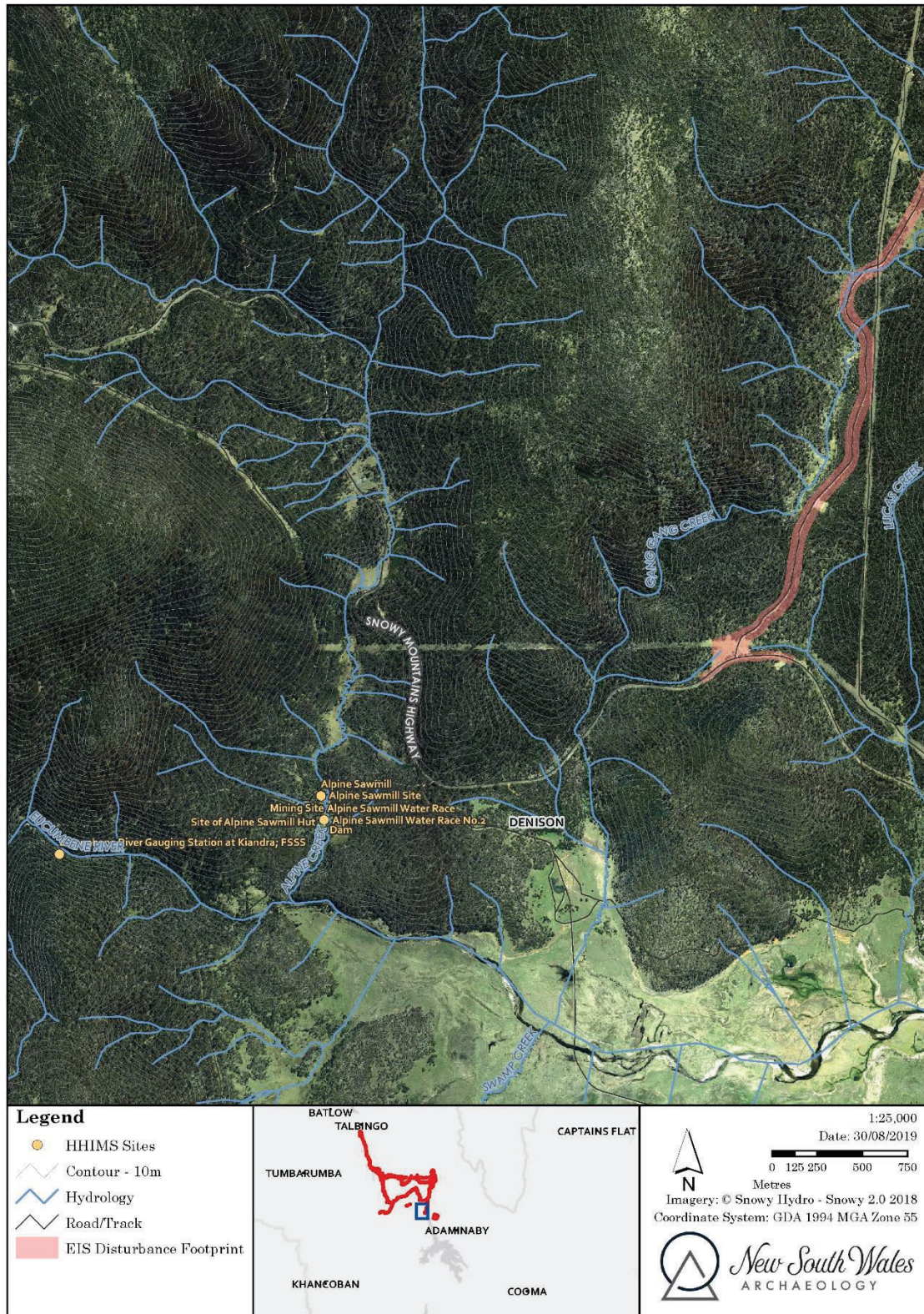
## Kings Cross Road





## Tantangara Road





## Tantangara Road