

Annexure A

Noise logging results

Annexure A Noise logging results

The noise logging results for NCA's 1-7 are presented below. Noise levels for certain periods have been excluded in accordance with the NPfI due to adverse weather conditions.

Table A-1 Unattended noise measurement results in dB(A) – NCA 1

Measurement date (2018)	Background noise levels L_{A90} dB(A)			Ambient noise levels L_{Aeq} dB(A)		
	Day ¹	Evening ¹	Night ¹	Day ¹	Evening ¹	Night ¹
Tuesday 13 February		48	-	57	56	53
Wednesday 14 February	42	44	42	55	59	54
Thursday 15 February	45	48	41	67	56	52
Friday 16 February	44	47	39	57	60	53
Saturday 17 February	44	49	40	61	59	50
Sunday 18 February	43	48	-	57	57	51
Monday 19 February	49	46	43	59	59	52
Tuesday 20 February	50	46	42	58	60	55
Wednesday 21 February	45	49	35	55	58	52
Thursday 22 February	-	-		56	-	51
Log Average				63	58	52
RBL	45	45²	39			

Notes:

1. Day is defined as 7:00 am to 6:00 pm, Monday to Saturday and 8:00 am to 6:00 pm Sundays and public holidays. Evening is defined as 6:00 pm to 10:00 pm, Monday to Sunday and public holidays. Night is defined as 10:00 pm to 7:00 am, Monday to Saturday and 10:00 pm to 8:00 am Sundays and public holidays.
2. Evening RBL adjusted to the same as the daytime RBL in accordance with community expectations.

Table A-2 Unattended noise measurement results in dB(A) – NCA 2

Measurement date (2018)	Background noise levels L_{A90} dB(A)			Ambient noise levels L_{Aeq} dB(A)		
	Day ¹	Evening ¹	Night ¹	Day ¹	Evening ¹	Night ¹
Tuesday 13 February		41	-	51	50	46
Wednesday 14 February	40	41	-	57	51	50
Thursday 15 February	38	41	32	53	50	46
Friday 16 February	37	40	37	50	51	47
Saturday 17 February	38	41	31	53	52	45
Sunday 18 February	37	41	36	56	54	45
Monday 19 February	40	40	34	52	49	45
Tuesday 20 February	44	36	35	55	49	57
Wednesday 21 February	-	-	-	-	-	38
Log Average				54	51	50
RBL	38	38²	35			

Notes:

- Day is defined as 7:00 am to 6:00 pm, Monday to Saturday and 8:00 am to 6:00 pm Sundays and public holidays. Evening is defined as 6:00 pm to 10:00 pm, Monday to Sunday and public holidays. Night is defined as 10:00 pm to 7:00 am, Monday to Saturday and 10:00 pm to 8:00 am Sundays and public holidays.
- Evening RBL adjusted to the same as the daytime RBL in accordance with community expectations.

Table A-3 Unattended noise measurement results in dB(A) – NCA 3

Measurement date (2019)	Background noise levels L_{A90} dB(A)			Ambient noise levels L_{Aeq} dB(A)		
	Day ¹	Evening ¹	Night ¹	Day ¹	Evening ¹	Night ¹
Wednesday 15 May	-	42	-	59	56	57
Thursday 16 May	41	43	39	57	57	52
Friday 17 May	41	43	40	57	60	52
Saturday 18 May	40	41	37	58	58	54
Sunday 19 May	38	40	35	56-	55	54
Monday 20 May	40	43	38	57	57	51
Tuesday 21 May	42	42	40	57	55	51
Wednesday 22 May	-	41	39	59	55	52
Thursday 23 May	40	40	38	56	55	51
Friday 24 May	-	-	-	65	-	54
Log Average				59	57	53
RBL	40	40²	38			

Notes:

- Day is defined as 7:00 am to 6:00 pm, Monday to Saturday and 8:00 am to 6:00 pm Sundays and public holidays. Evening is defined as 6:00 pm to 10:00 pm, Monday to Sunday and public holidays. Night is defined as 10:00 pm to 7:00 am, Monday to Saturday and 10:00 pm to 8:00 am Sundays and public holidays.
- Evening RBL adjusted to the same as the daytime RBL in accordance with community expectations.

Table A-4 Unattended noise measurement results in dB(A) – NCA 4

Measurement date (2019)	Background noise levels L_{A90} dB(A)			Ambient noise levels L_{Aeq} dB(A)		
	Day ¹	Evening ¹	Night ¹	Day ¹	Evening ¹	Night ¹
Wednesday 15 May	-	38		51	46	40
Thursday 16 May	34	38	32	52	47	42
Friday 17 May	32	37	32	50	46	49
Saturday 18 May	33	38	33	50	44	43
Sunday 19 May	33	36	31	58	46	41
Monday 20 May	33	33 ⁷	30	59	46	42
Tuesday 21 May	34	33	32	58	45	43
Wednesday 22 May	33	38	33	53	44	45
Thursday 23 May	32	38	32	51	45	46
Friday 24 May	-	37	-	62	-	45
Log Average				54	45	44
RBL	33	33²	38			

Notes:

- Day is defined as 7:00 am to 6:00 pm, Monday to Saturday and 8:00 am to 6:00 pm Sundays and public holidays. Evening is defined as 6:00 pm to 10:00 pm, Monday to Sunday and public holidays. Night is defined as 10:00 pm to 7:00 am, Monday to Saturday and 10:00 pm to 8:00 am Sundays and public holidays.
- Evening RBL adjusted to the same as the daytime RBL in accordance with community expectations.

Table A-5 Unattended noise measurement results in dB(A) – NCA 5

Measurement date (2019)	Background noise levels L_{A90} dB(A)			Ambient noise levels L_{Aeq} dB(A)		
	Day ¹	Evening ¹	Night ¹	Day ¹	Evening ¹	Night ¹
Wednesday 15 May	-	38	-	52	59	47
Thursday 16 May	35	39	29	59	58	46
Friday 17 May	33	38	32	59	59	50
Saturday 18 May	35	38	30	50	47	42
Sunday 19 May	34	38	31	55	58	49
Monday 20 May	33	36	28	58	57	50
Tuesday 21 May	34	37	30	58	56	51
Wednesday 22 May	-	38	30	57	54	46
Thursday 23 May	32	37	31	52	56	47
Friday 24 May	35	-	-	62	-	50
Log Average				58	57	48
RBL	34	34²	30			

Notes:

- Day is defined as 7:00 am to 6:00 pm, Monday to Saturday and 8:00 am to 6:00 pm Sundays and public holidays. Evening is defined as 6:00 pm to 10:00 pm, Monday to Sunday and public holidays. Night is defined as 10:00 pm to 7:00 am, Monday to Saturday and 10:00 pm to 8:00 am Sundays and public holidays.
- Evening RBL adjusted to the same as the daytime RBL in accordance with community expectations.

Table A-6 Unattended noise measurement results in dB(A) – NCA 6

Measurement date (2018)	Background noise levels L_{A90} dB(A)			Ambient noise levels L_{Aeq} dB(A)		
	Day ¹	Evening ¹	Night ¹	Day ¹	Evening ¹	Night ¹
Wednesday 14 February	-	42	-	61	59	60
Thursday 15 February	42	44	-	61	60	56
Friday 16 February	43	41	-	60	59	59
Saturday 17 February	43	44	-	62	60	55
Sunday 18 February	41	44	-	61	62	56
Monday 19 February	43	41	-	60	61	53
Tuesday 20 February	46	39	36	61	59	54
Wednesday 21 February	42	43	-	60	61	55
Thursday 22 February	-	-	-	62	-	52
Log Average				61	60	56
RBL	43	42	36			

Notes:

- Day is defined as 7:00 am to 6:00 pm, Monday to Saturday and 8:00 am to 6:00 pm Sundays and public holidays. Evening is defined as 6:00 pm to 10:00 pm, Monday to Sunday and public holidays. Night is defined as 10:00 pm to 7:00 am, Monday to Saturday and 10:00 pm to 8:00 am Sundays and public holidays.
- Evening RBL adjusted to the same as the daytime RBL in accordance with community expectations.

Table A-7 Unattended noise measurement results in dB(A) – NCA 7

Measurement date (2018)	Background noise levels L_{A90} dB(A)			Ambient noise levels L_{Aeq} dB(A)		
	Day ¹	Evening ¹	Night ¹	Day ¹	Evening ¹	Night ¹
Monday 07 May 2018		32	-	44	42	34
Tuesday 08 May 2018	29	-	30	51	42	40
Wednesday 09 May 2018	29	-	27	47	42	39
Thursday 10 May 2018	-	-	27	47	45	38
Friday 11 May 2018	-	34	27	47	42	36
Saturday 12 May 2018	-	34	-	52	50	42
Sunday 13 May 2018	-	-	26	48	47	40
Monday 14 May 2018	36	31	27	49	43	40
Tuesday 15 May 2018	29	37	26	49	46	41
Wednesday 16 May 2018	34	-	-	48	45	41
Log Average				49	45	40
RBL	30²	30³	30²			

Notes:

- Day is defined as 7:00 am to 6:00 pm, Monday to Saturday and 8:00 am to 6:00 pm Sundays and public holidays. Evening is defined as 6:00 pm to 10:00 pm, Monday to Sunday and public holidays. Night is defined as 10:00 pm to 7:00 am, Monday to Saturday and 10:00 pm to 8:00 am Sundays and public holidays.

Noise Logger Report

11 Boardman Street, Yagoona



Item	Information
Logger Type	ARL 215
Serial number	194639
Address	11 Boardman Street, Yagoona
Location	Front Yard
Facade / Free Field	Free Field
Environment	Noise environment dominated by road traffic from Rookwood Road 56dBA. Passenger aircraft flyover just audible. Light winds delivery truck passby on local road 65dBA. Delivery van 62dBA on local street. Local neighbours starting performance car 60-62dBA. Slight tonal noise (vacuum cleaner?)

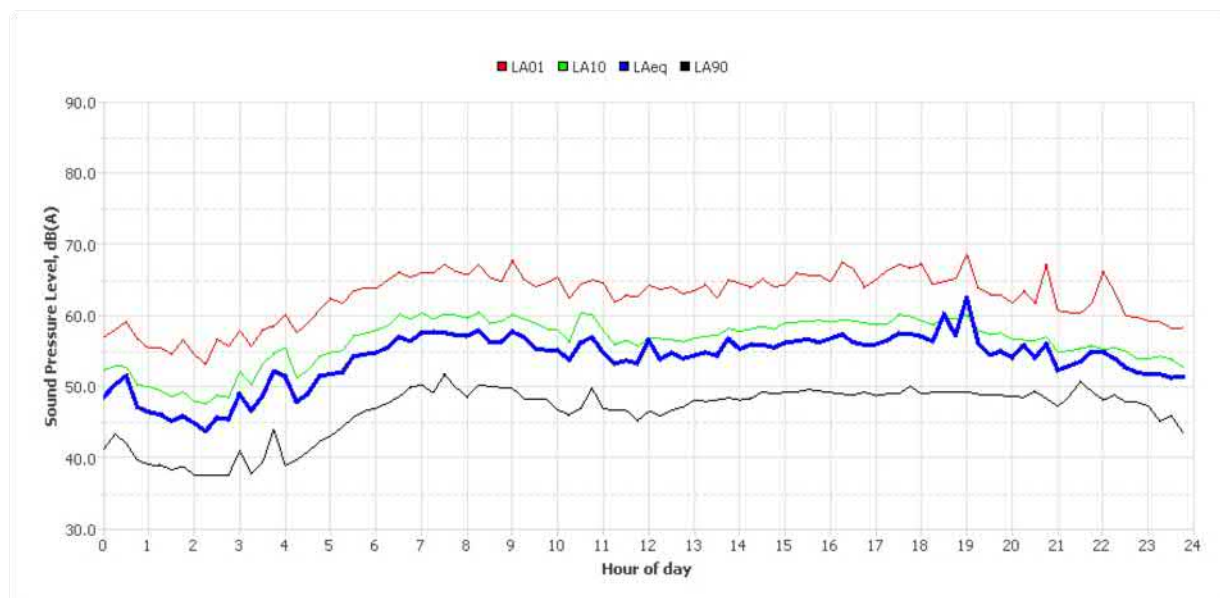
Measured noise levels

Logging Date	L _{Aeq} Day	Eve	Night	ABL Day	Eve	Night	L _{Aeq} 15hr	L _{Aeq} 9hr
Tue Feb 13 2018	57	56	53	-	48	-	57	53
Wed Feb 14 2018	55	59	54	42	44	42	56	54
Thu Feb 15 2018	67	56	52	45	48	41	66	52
Fri Feb 16 2018	57	60	53	44	47	39	58	53
Sat Feb 17 2018	61	59	50	44	49	40	60	50
Sun Feb 18 2018	57	57	51	43	48	-	57	51
Mon Feb 19 2018	59	59	52	49	46	43	59	52
Tue Feb 20 2018	58	60	55	50	46	42	59	55
Wed Feb 21 2018	55	58	52	45	49	35	56	52
Thu Feb 22 2018	56	-	51	-	-	-	56	51
Summary	63	58	52	45	48	39	60	53

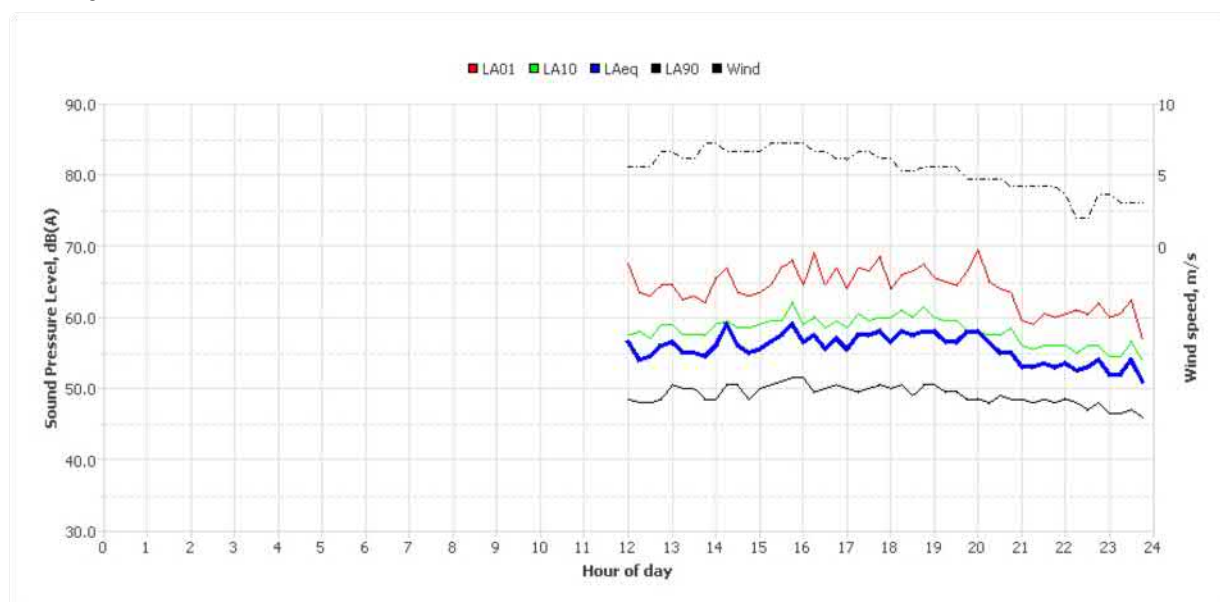
Note: Results denoted with '-' do not contain enough valid data for a value to be calculated. The data has been excluded either manually or automatically as a result of adverse weather conditions.

Logger Location	Logger Deployment Photo

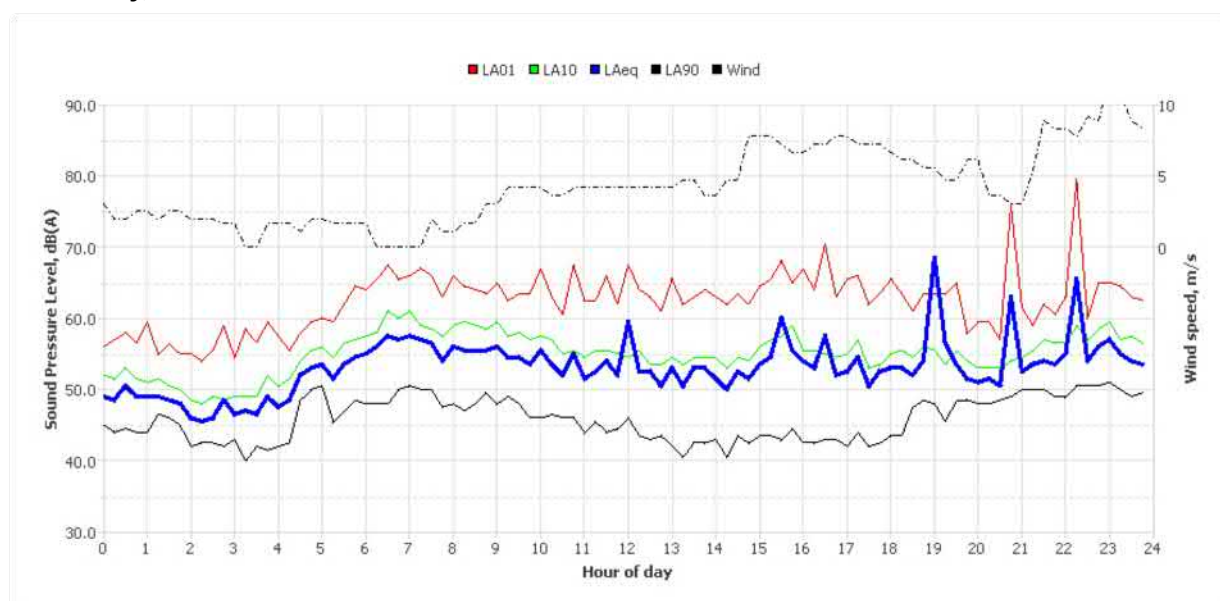
Typical Day



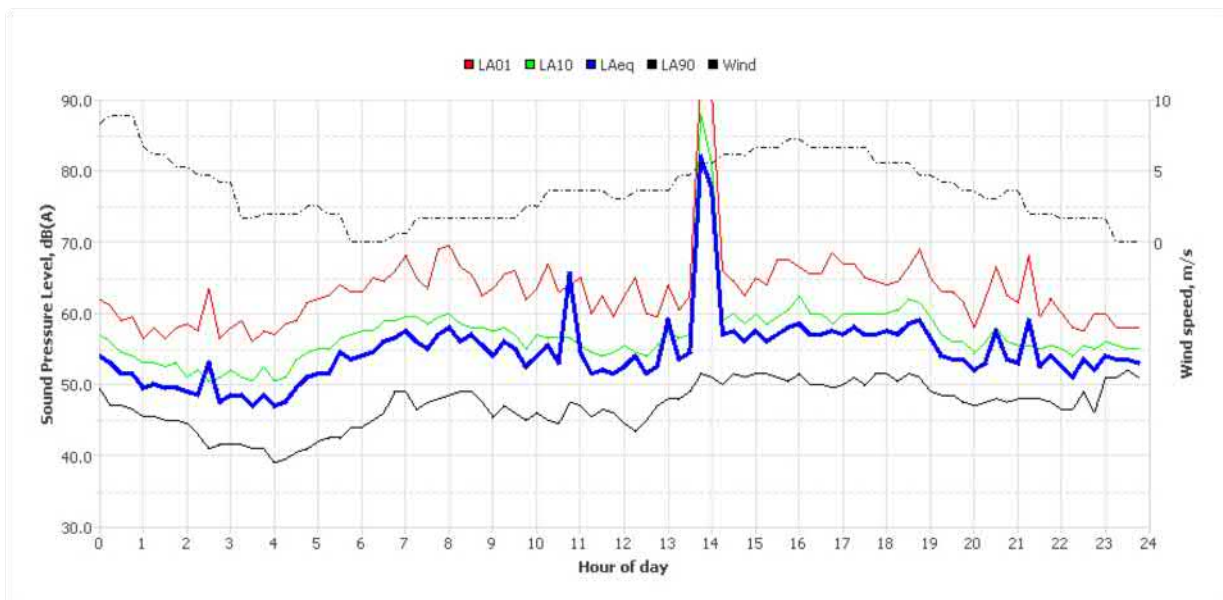
Tuesday, 13 Feb 2018



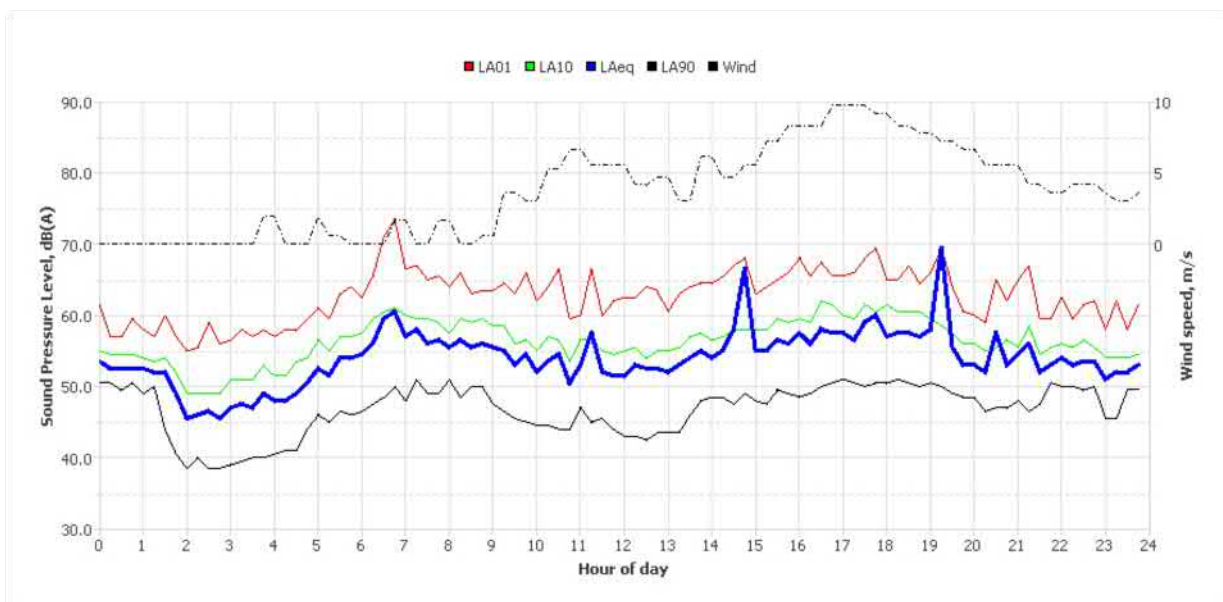
Wednesday, 14 Feb 2018



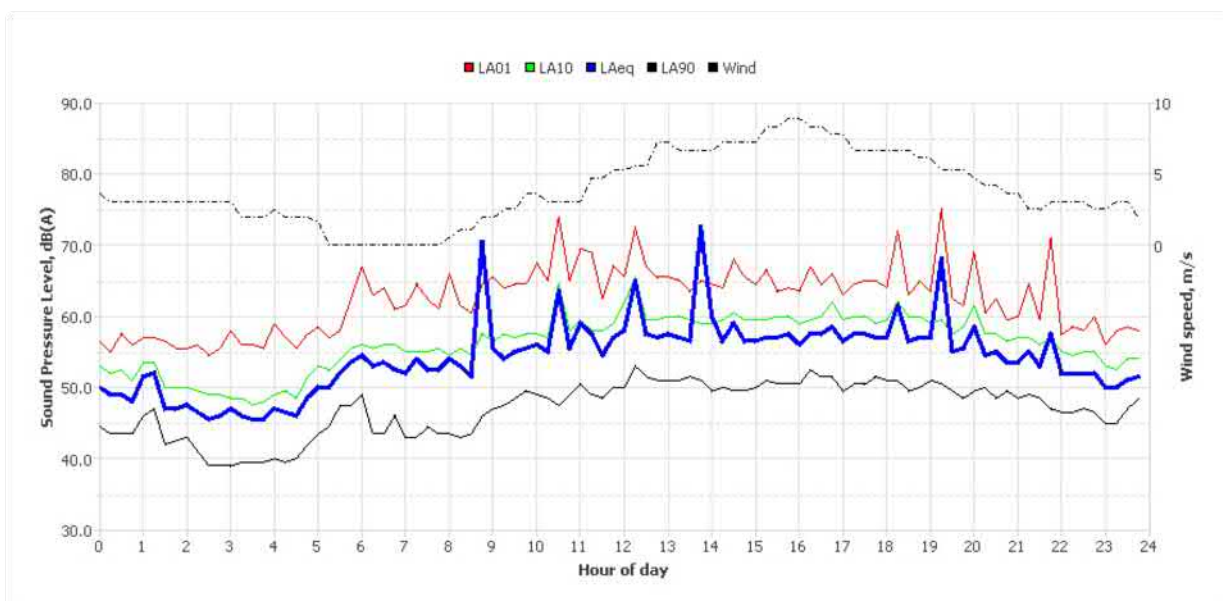
Thursday, 15 Feb 2018



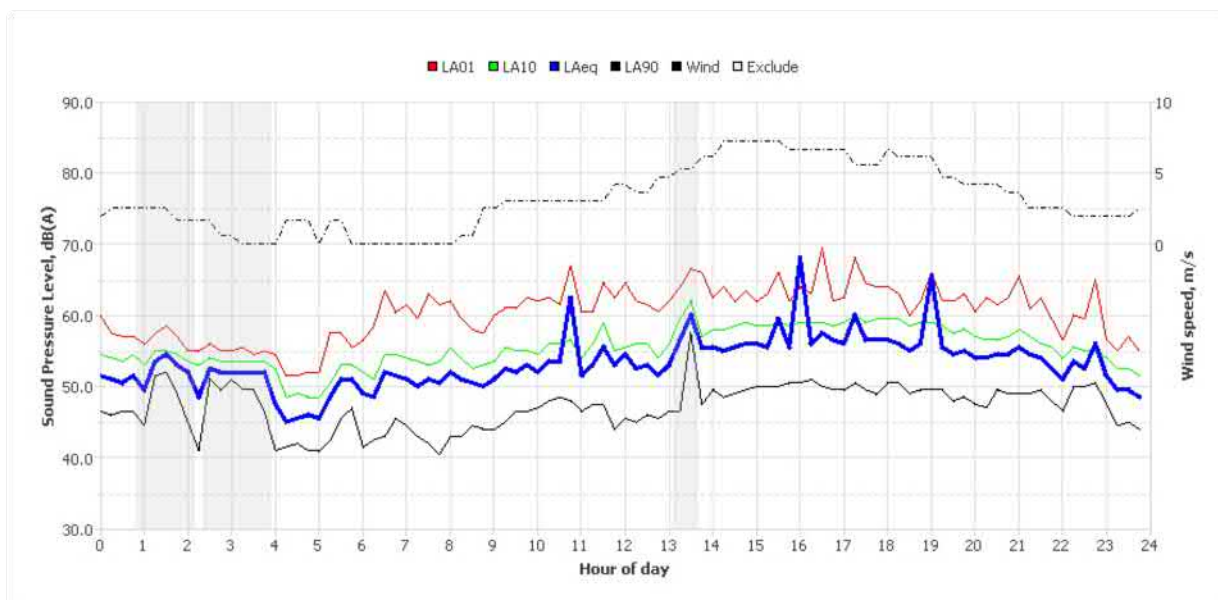
Friday, 16 Feb 2018



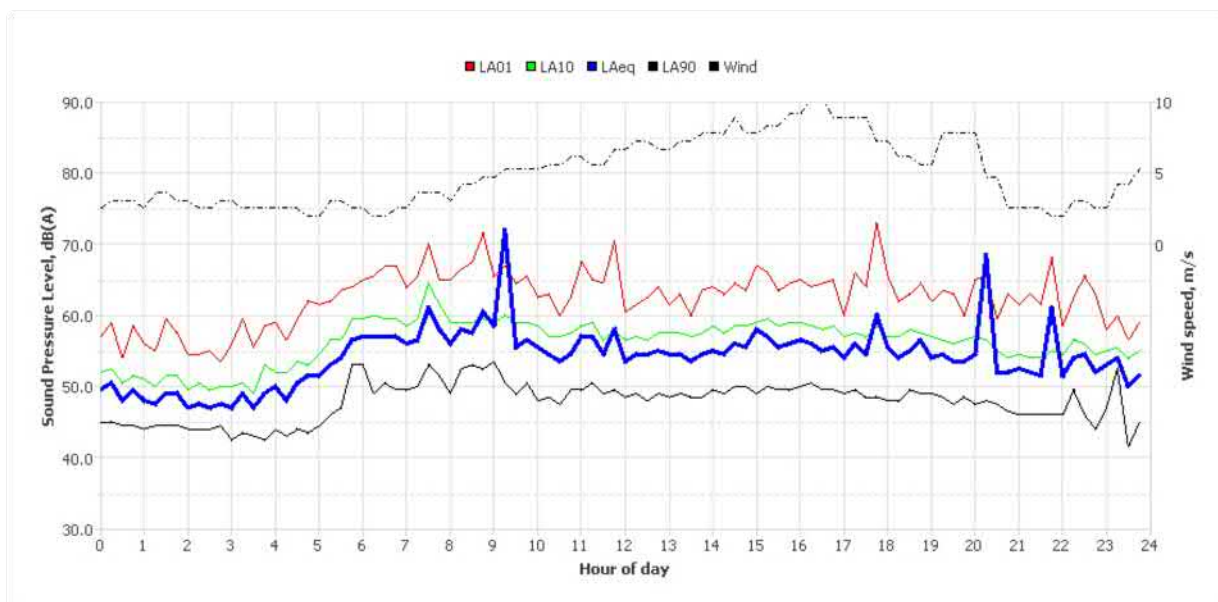
Saturday, 17 Feb 2018



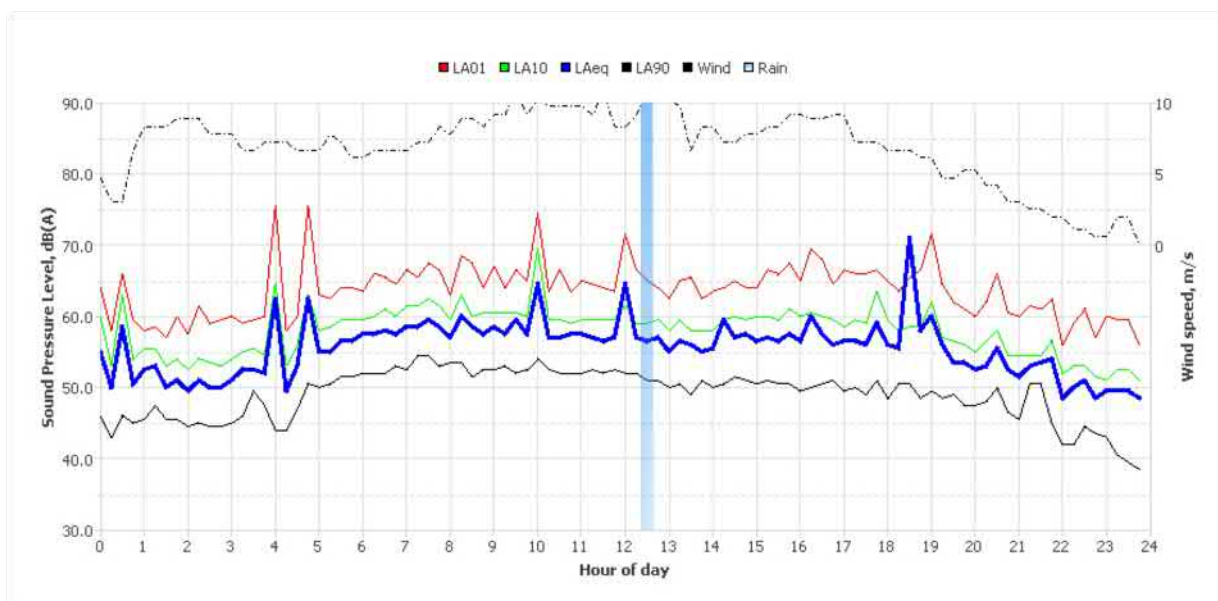
Sunday, 18 Feb 2018



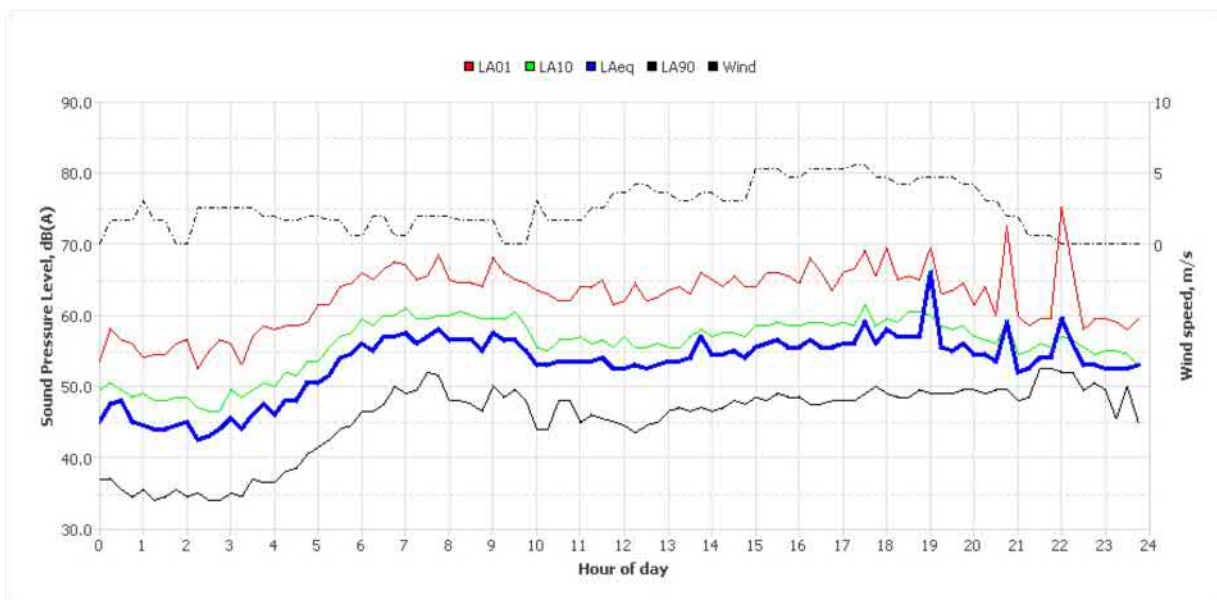
Monday, 19 Feb 2018



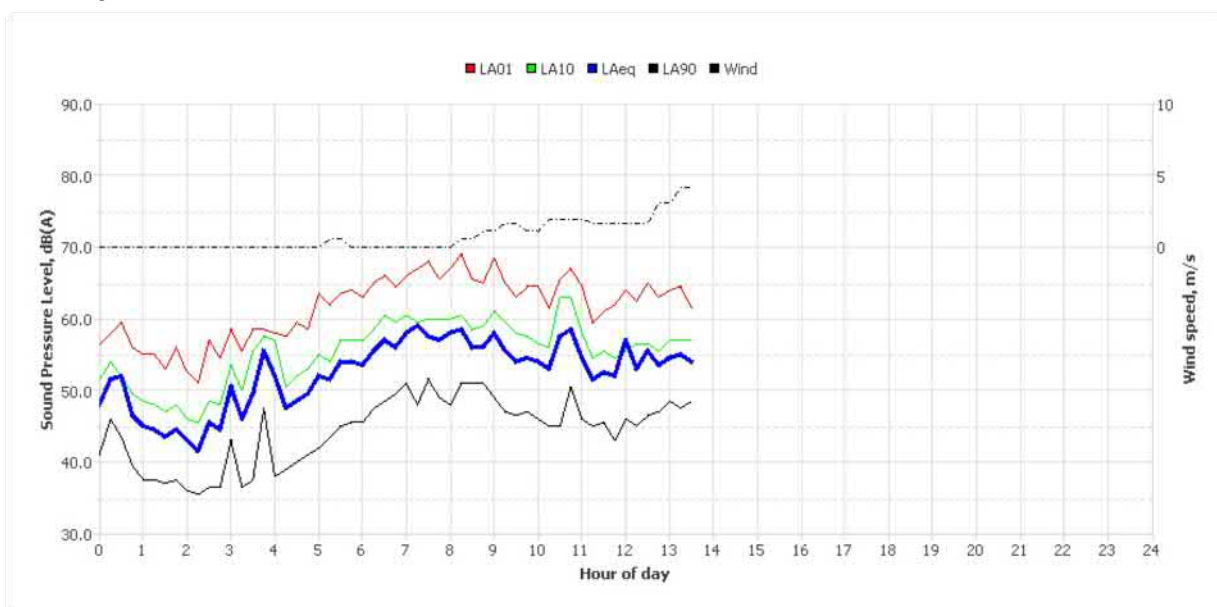
Tuesday, 20 Feb 2018



Wednesday, 21 Feb 2018



Thursday, 22 Feb 2018



Noise Logger Report

14 Merrett Crescent, Greenacre



Item	Information
Logger Type	ARL 315
Serial number	15-299-444
Address	14 Merrett Crescent, Greenacre
Location	Front Yard
Facade / Free Field	Free Field
Environment	Road traffic from Rawson Road barely audible. Passenger aircraft barely audible. Environment characterised by birds and light insect noise. Indiscernible noise coming from south just audible, sounds like general aviation aircraft constant hum. Train horn in background. Light winds.

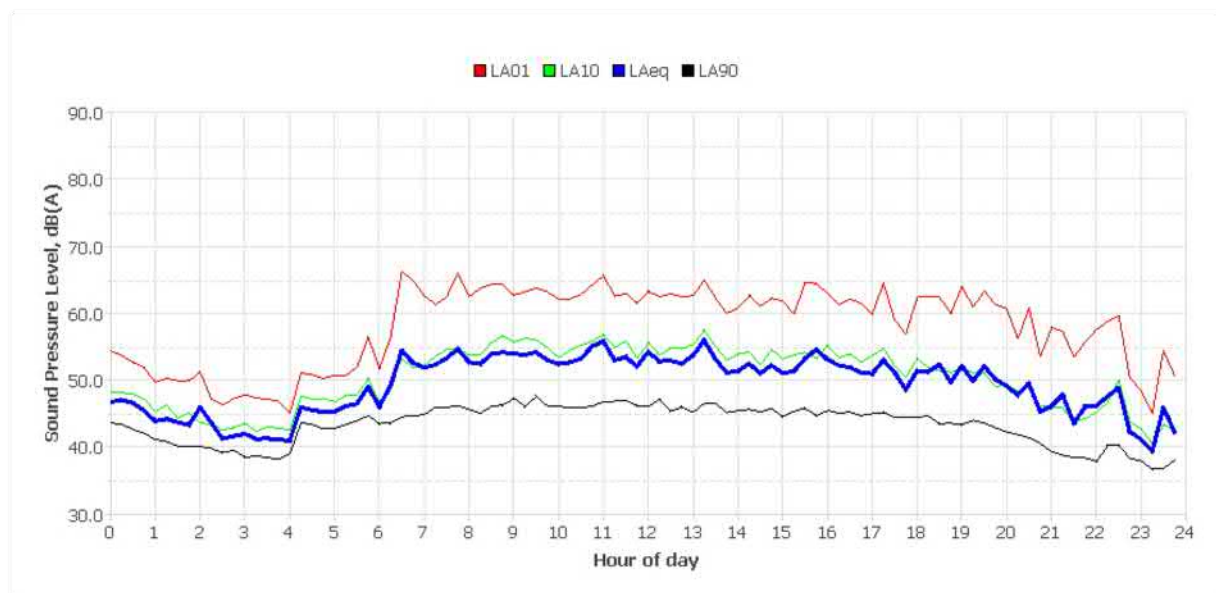
Measured noise levels

Logging Date	L _{Aeq} Day	Eve	Night	ABL Day	Eve	Night	L _{Aeq,15hr}	L _{Aeq,9hr}
Tue Feb 13 2018	51	50	46	-	41	-	50	46
Wed Feb 14 2018	57	51	50	40	41	-	56	50
Thu Feb 15 2018	53	50	46	38	41	32	52	46
Fri Feb 16 2018	50	51	47	37	40	37	50	47
Sat Feb 17 2018	53	52	45	38	41	31	53	45
Sun Feb 18 2018	56	54	45	37	41	36	56	45
Mon Feb 19 2018	52	49	45	40	40	34	52	45
Tue Feb 20 2018	55	49	57	44	36	35	54	57
Wed Feb 21 2018	-	-	38	-	-	-	-	38
Summary	54	51	50	38	41	35	53	50

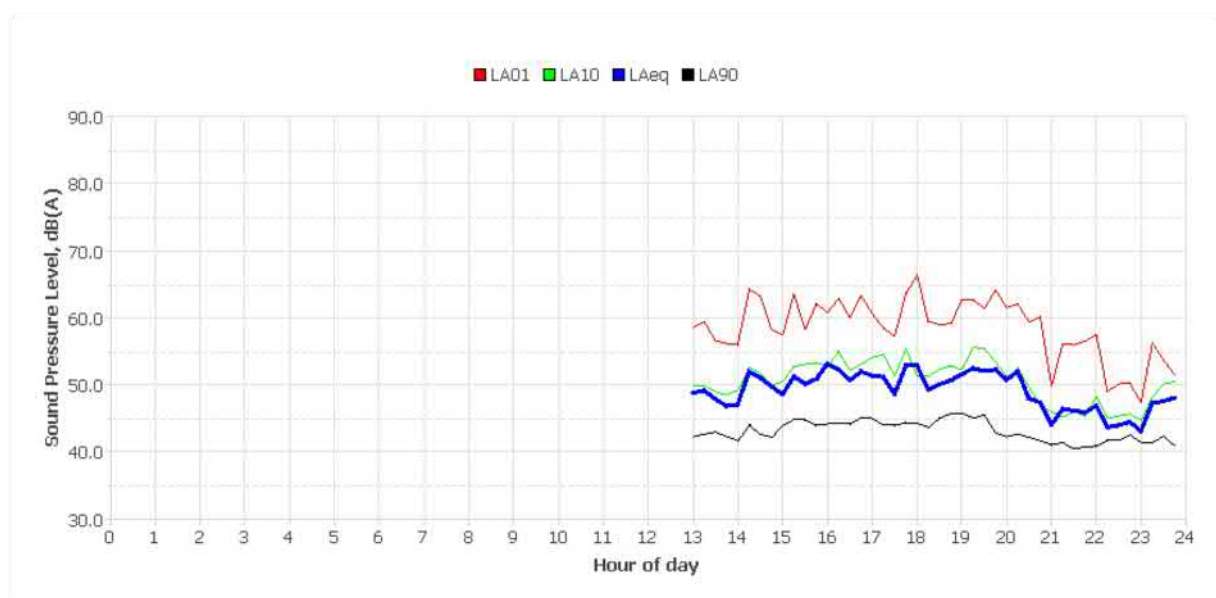
Note: Results denoted with '-' do not contain enough valid data for a value to be calculated. The data has been excluded either manually or automatically as a result of adverse weather conditions.

Logger Location	Logger Deployment Photo
	

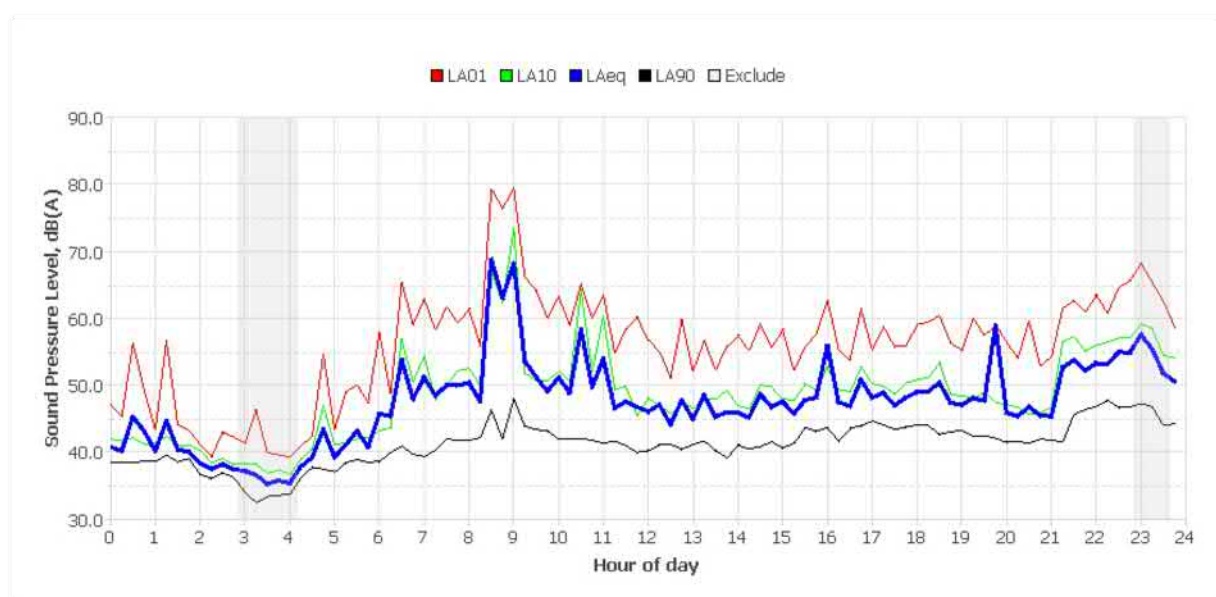
Typical Day



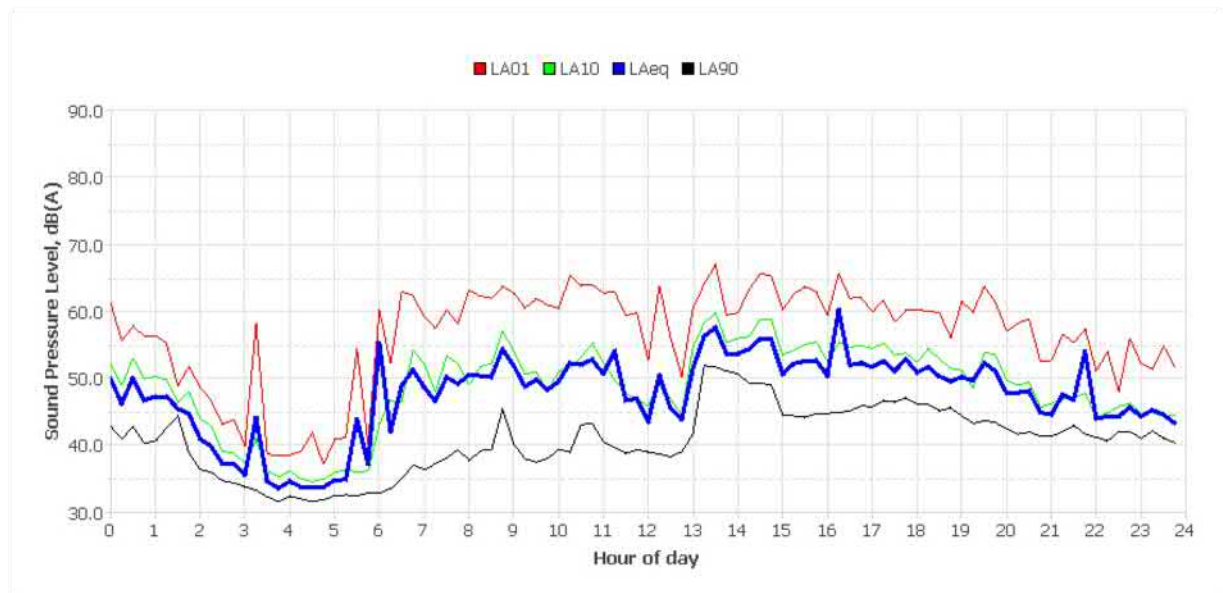
Tuesday, 13 Feb 2018



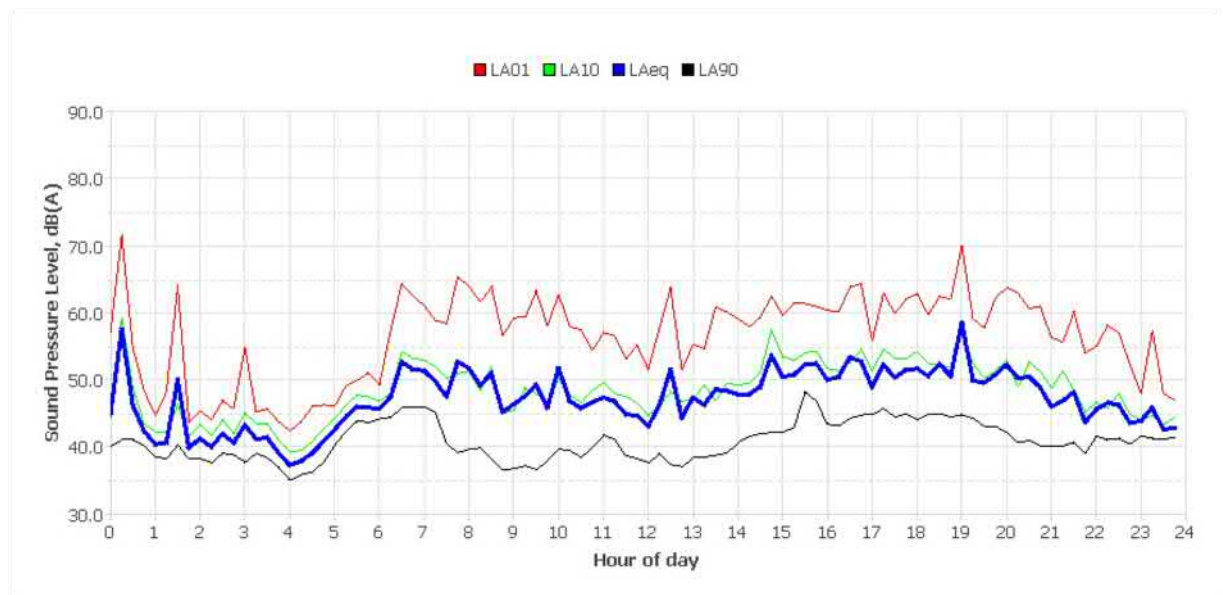
Wednesday, 14 Feb 2018



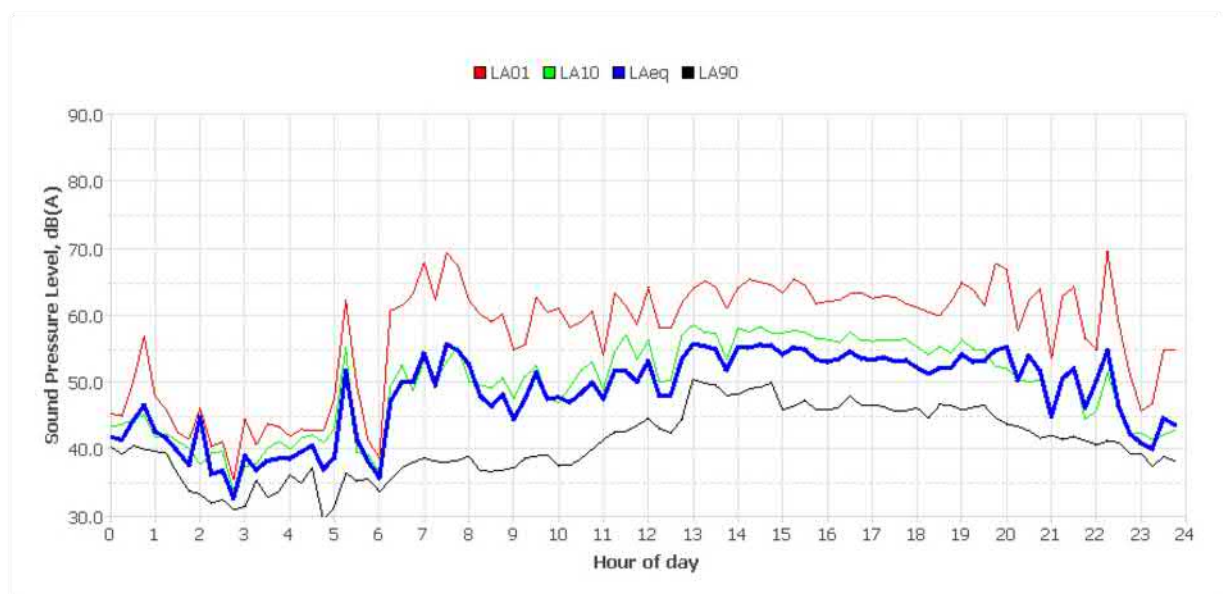
Thursday, 15 Feb 2018



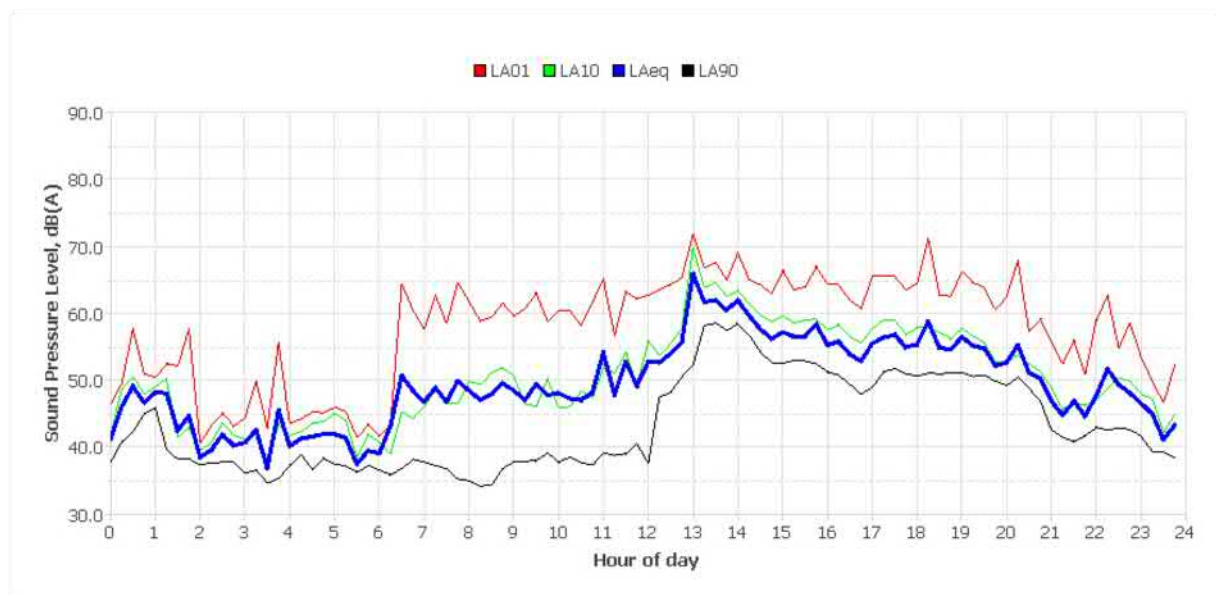
Friday, 16 Feb 2018



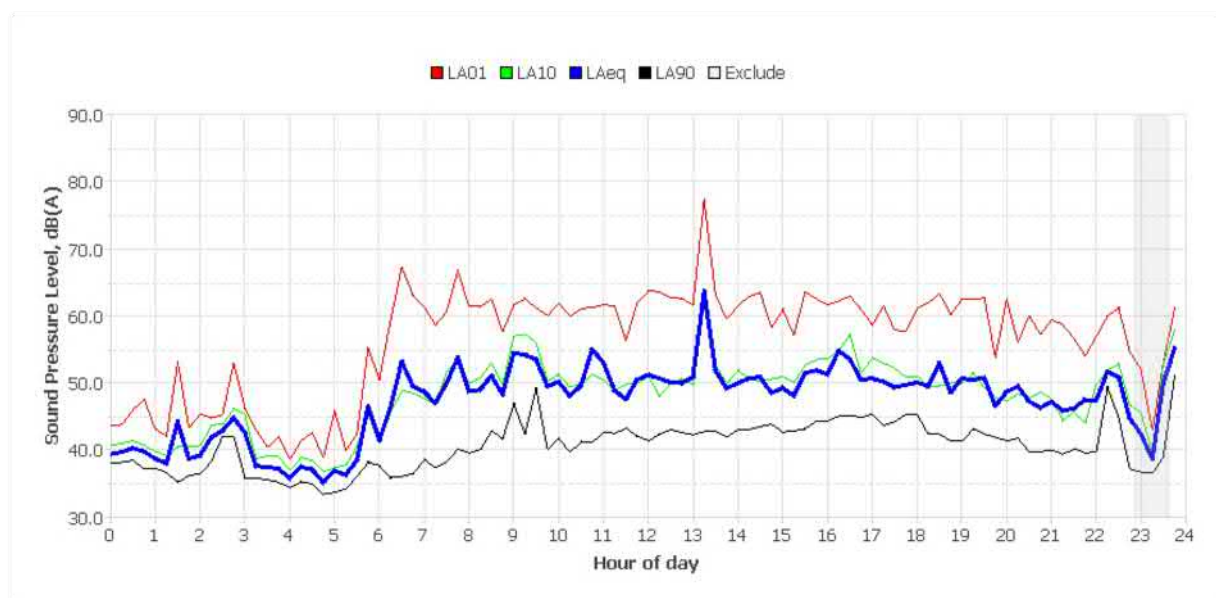
Saturday, 17 Feb 2018



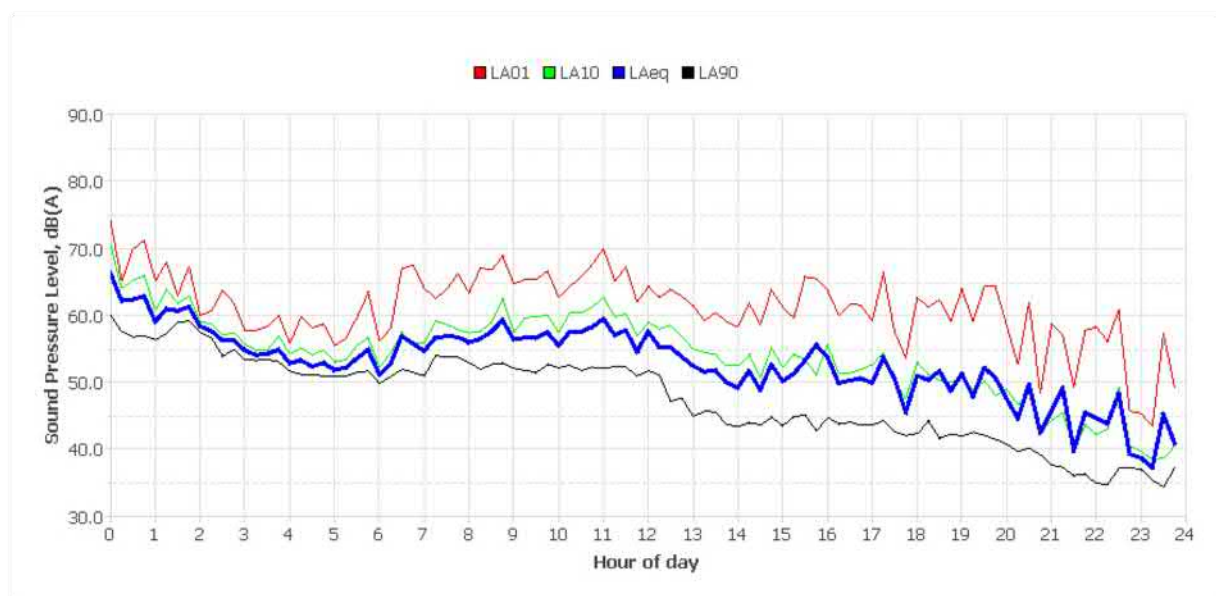
Sunday, 18 Feb 2018



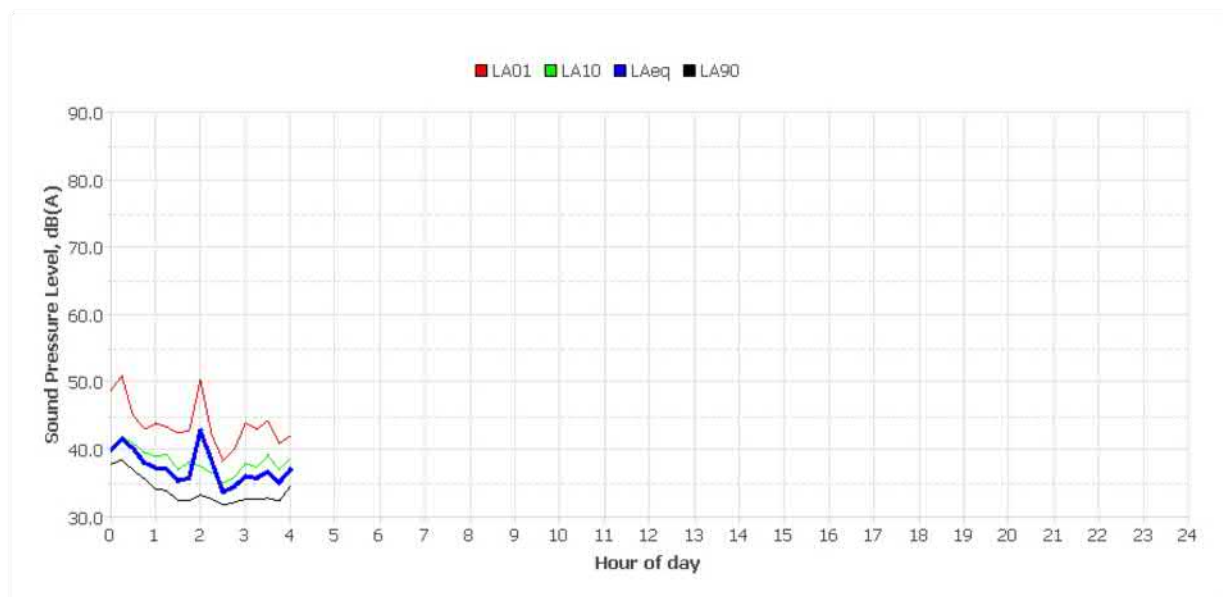
Monday, 19 Feb 2018



Tuesday, 20 Feb 2018



Wednesday, 21 Feb 2018



Noise Logger Report

101 Yangoora Road, Lakemba

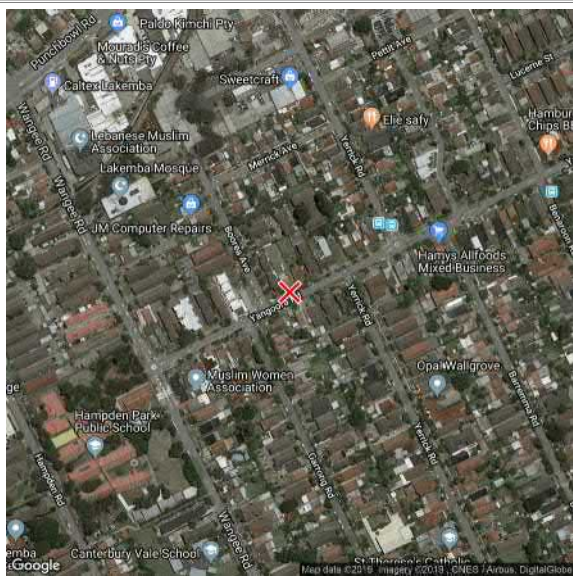



Item	Information
Logger Type	ARL 315
Serial number	15-203-504
Address	101 Yangoora Road, Lakemba
Location	Front Yard
Facade / Free Field	Facade
Environment	Background dominated by nature. Typical suburban street noise environment.

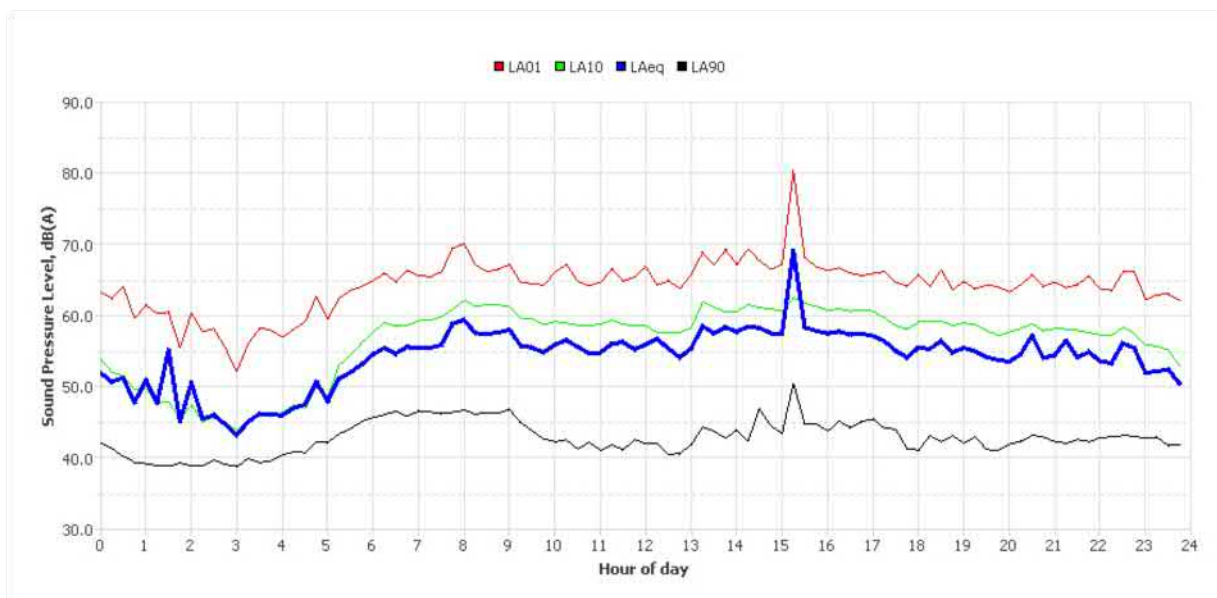
Measured noise levels

Logging Date	L _{Aeq} Day	Eve	Night	ABL Day	Eve	Night	L _{Aeq} ,15hr	L _{Aeq} ,9hr
Wed May 15 2019	59	56	57	-	42	-	58	57
Thu May 16 2019	57	57	52	41	43	39	57	52
Fri May 17 2019	57	60	52	41	43	40	58	52
Sat May 18 2019	58	58	54	40	41	37	58	54
Sun May 19 2019	56	55	54	38	40	35	56	54
Mon May 20 2019	57	57	51	40	43	38	57	51
Tue May 21 2019	57	55	51	42	42	40	56	51
Wed May 22 2019	59	55	52	-	41	39	58	52
Thu May 23 2019	56	55	51	40	40	38	56	51
Fri May 24 2019	65	-	54	-	-	-	65	54
Summary	59	57	53	40	42	38	59	53

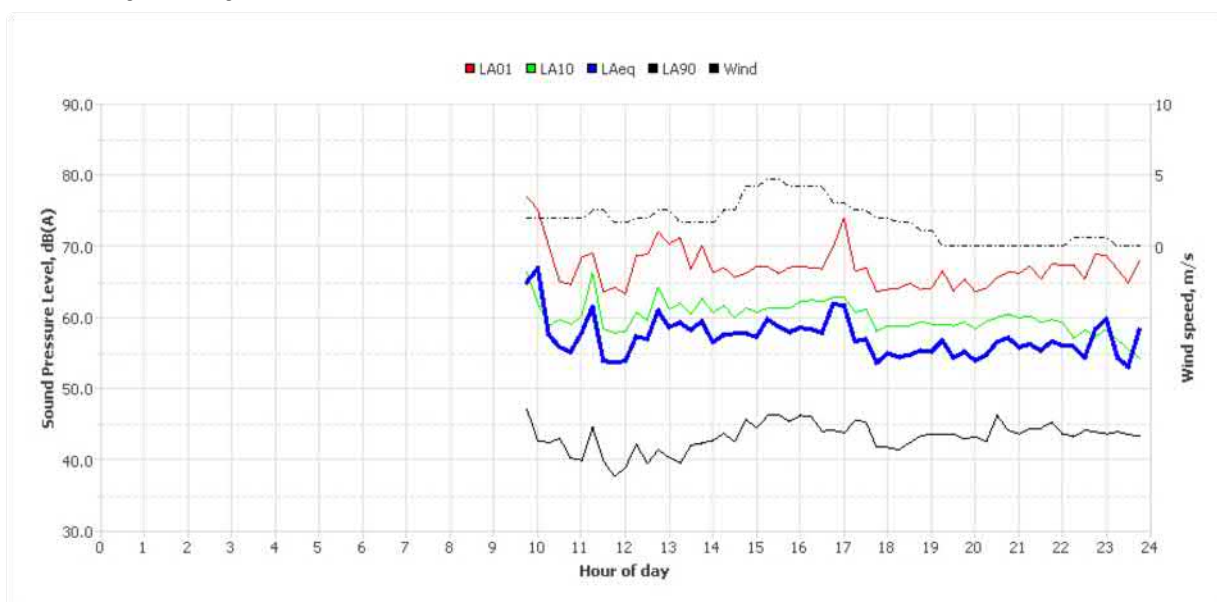
Note: Results denoted with '-' do not contain enough valid data for a value to be calculated. The data has been excluded either manually or automatically as a result of adverse weather conditions.

Logger Location	Logger Deployment Photo
	

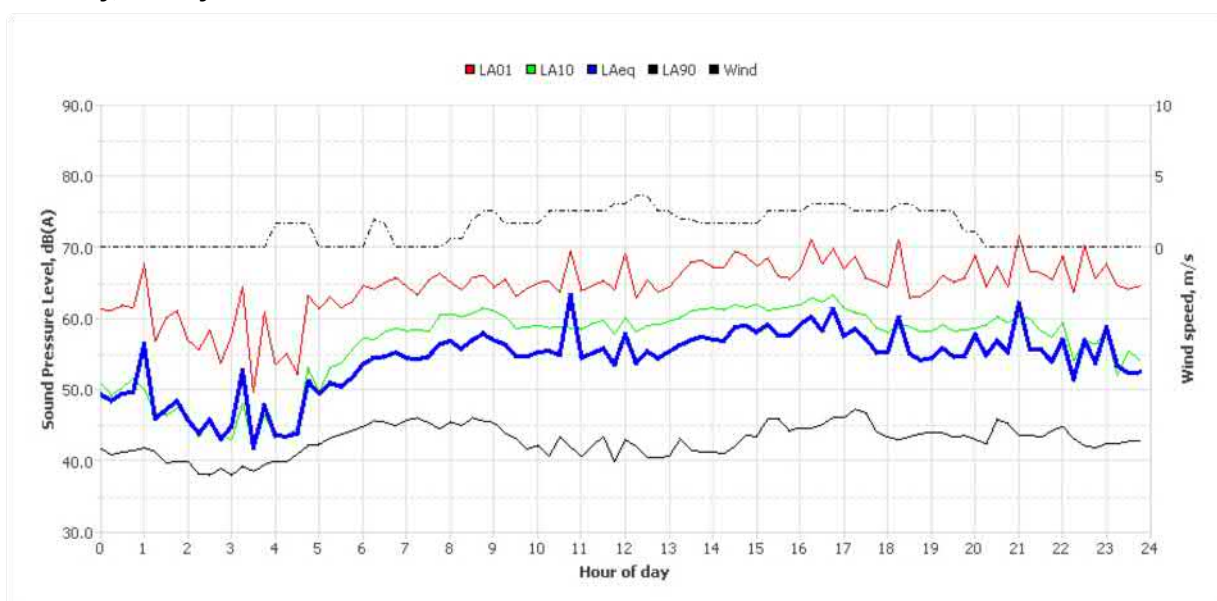
Typical Day



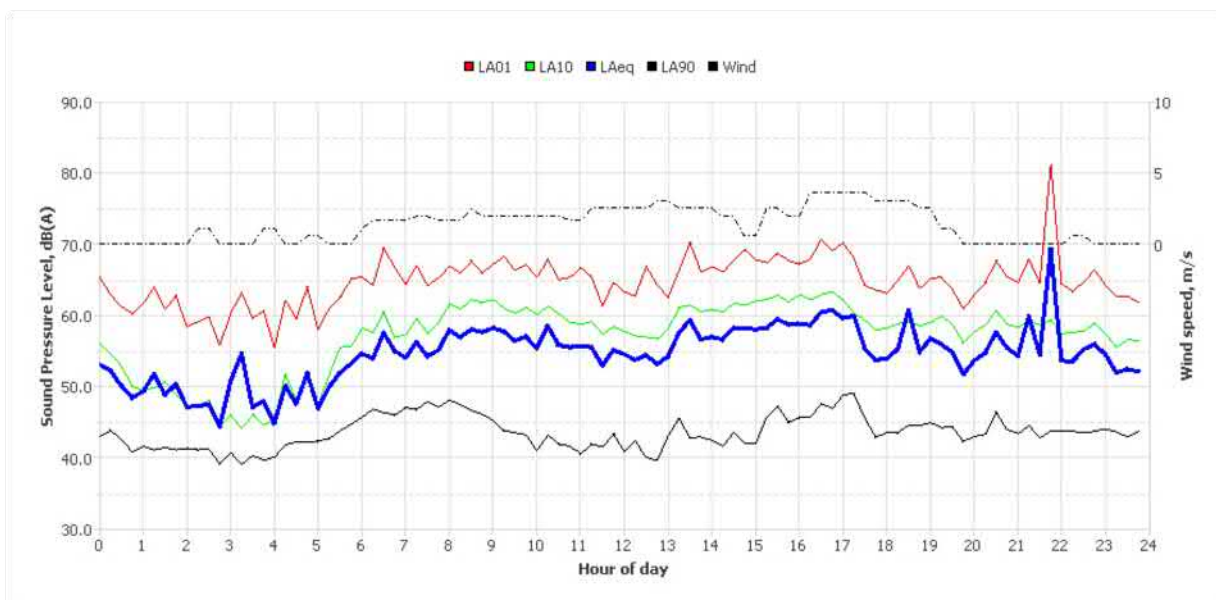
Wednesday, 15 May 2019



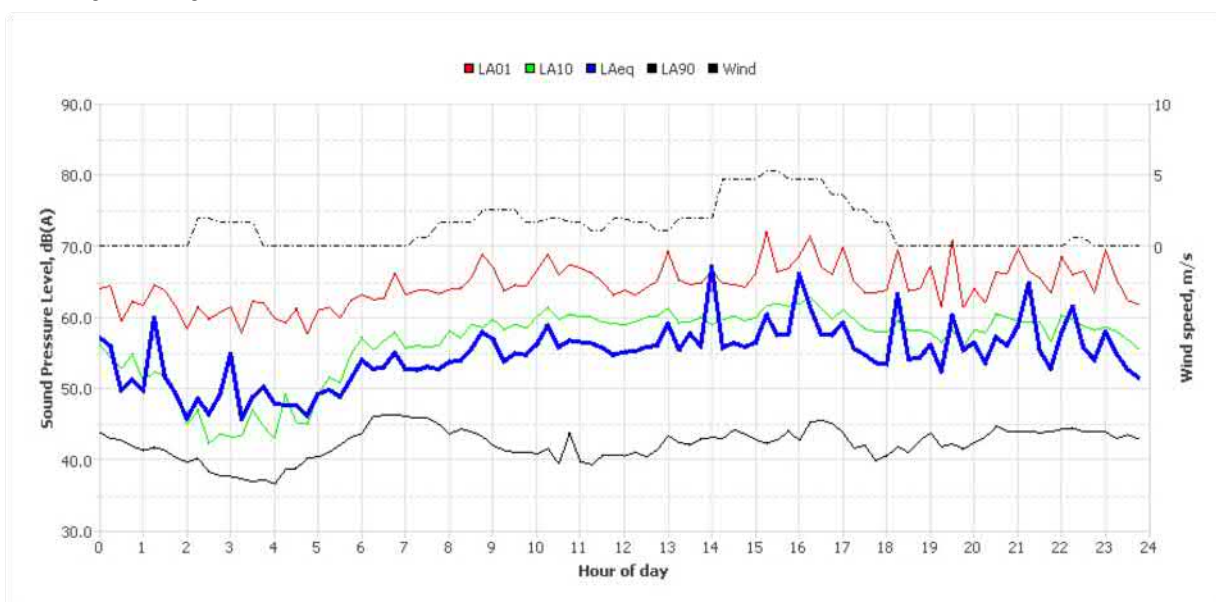
Thursday, 16 May 2019



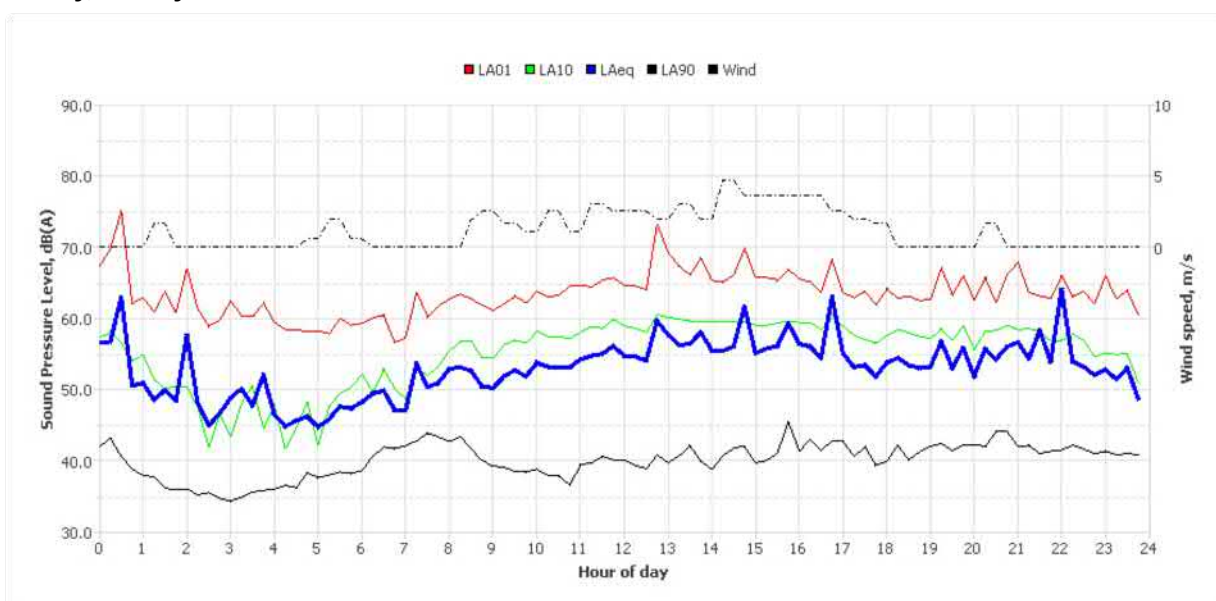
Friday, 17 May 2019



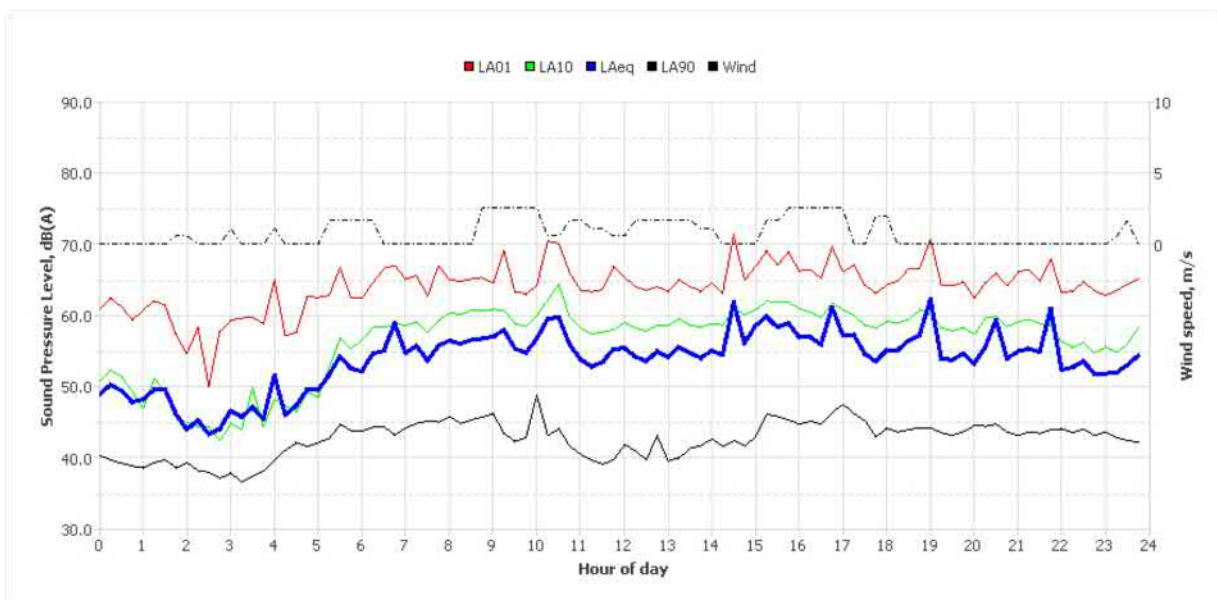
Saturday, 18 May 2019



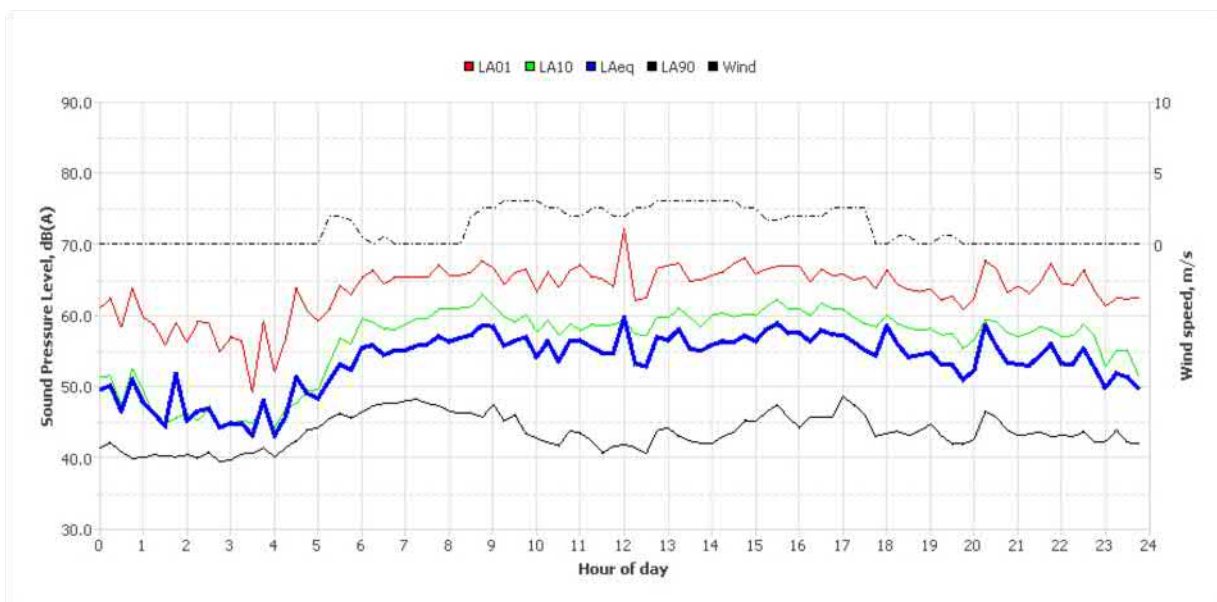
Sunday, 19 May 2019



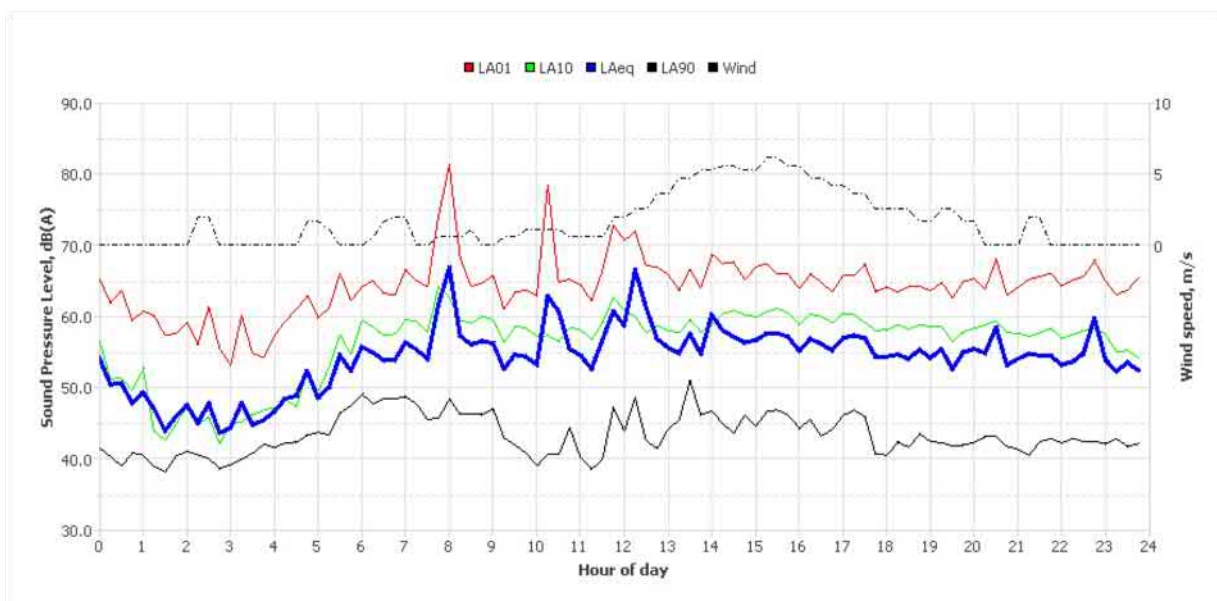
Monday, 20 May 2019



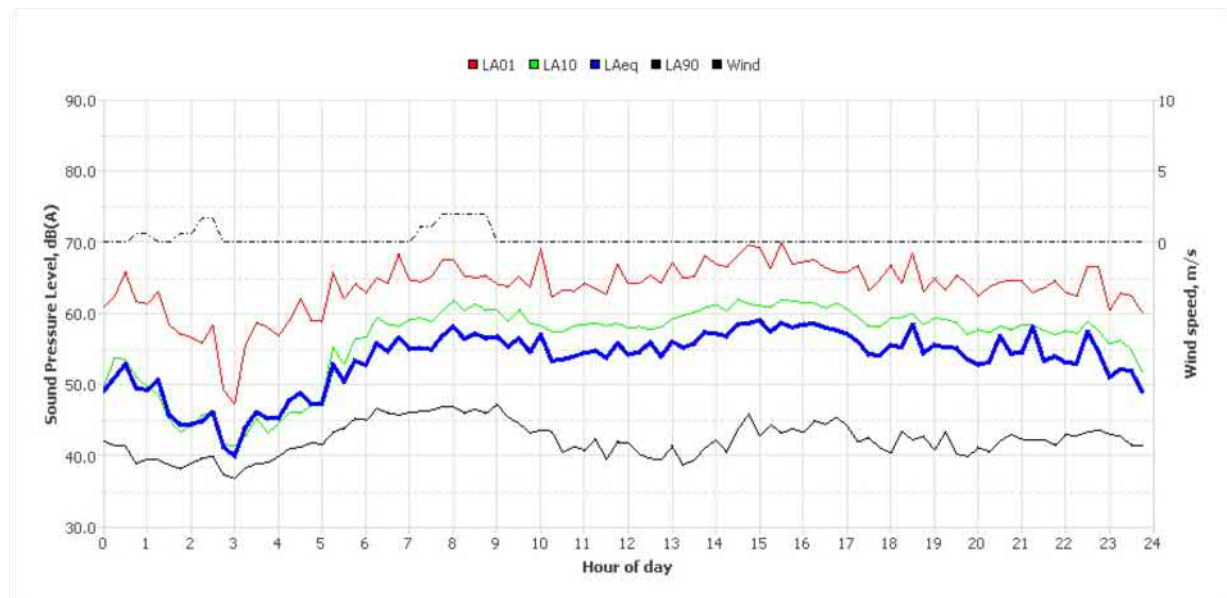
Tuesday, 21 May 2019



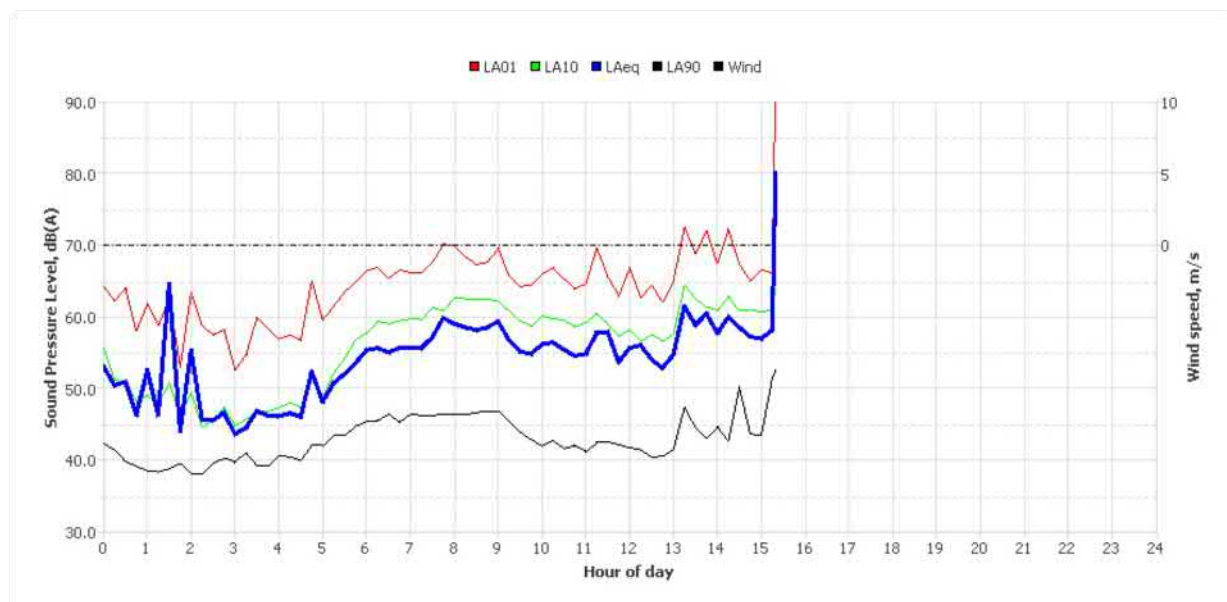
Wednesday, 22 May 2019



Thursday, 23 May 2019



Friday, 24 May 2019



Noise Logger Report

33 Byron Street, Campsie



Item	Information
Logger Type	Rion NL52
Serial number	876010
Address	33 Byron Street, Campsie
Location	Front Yard
Facade / Free Field	Facade
Environment	Background dominated by nature. Typical suburban street noise environment with occasional plane pass by.

Measured noise levels

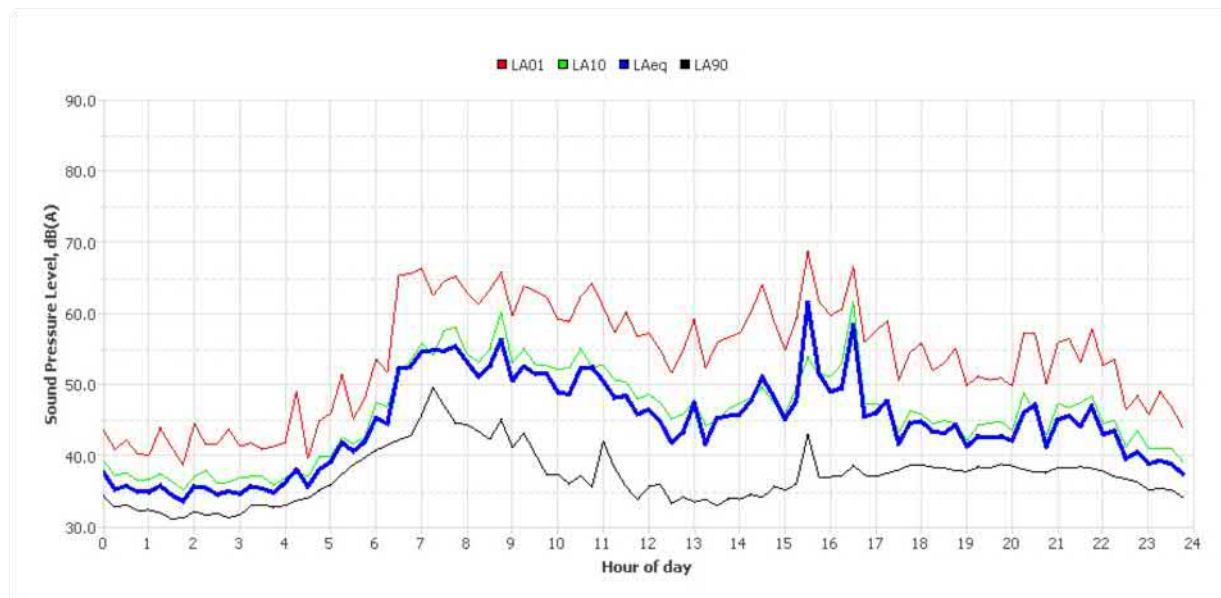
Logging Date	L _{Aeq} Day	Eve	Night	ABL Day	Eve	Night	L _{Aeq,15hr}	L _{Aeq,9hr}
Wed May 15 2019	51	46	40	-	38	-	50	40
Thu May 16 2019	52	47	42	34	38	32	51	42
Fri May 17 2019	50	46	49	32	37	32	49	49
Sat May 18 2019	50	44	43	33	38	33	49	43
Sun May 19 2019	48	46	41	33	36	31	47	41
Mon May 20 2019	49	46	42	33	37	30	48	42
Tue May 21 2019	48	45	43	34	38	32	48	43
Wed May 22 2019	53	44	45	33	38	33	52	45
Thu May 23 2019	51	45	46	32	37	32	50	46
Fri May 24 2019	62	-	45	-	-	-	62	45
Summary	54	45	44	33	38	32	54	44

Note: Results denoted with '-' do not contain enough valid data for a value to be calculated. The data has been excluded either manually or automatically as a result of adverse weather conditions.

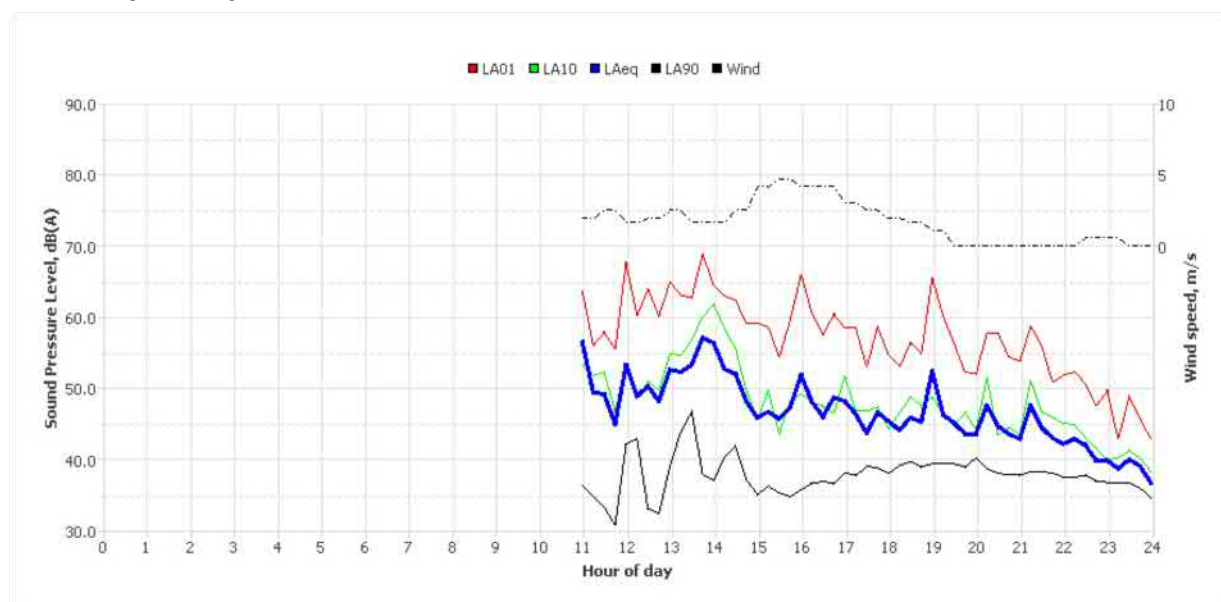
Logger Location	Logger Deployment Photo



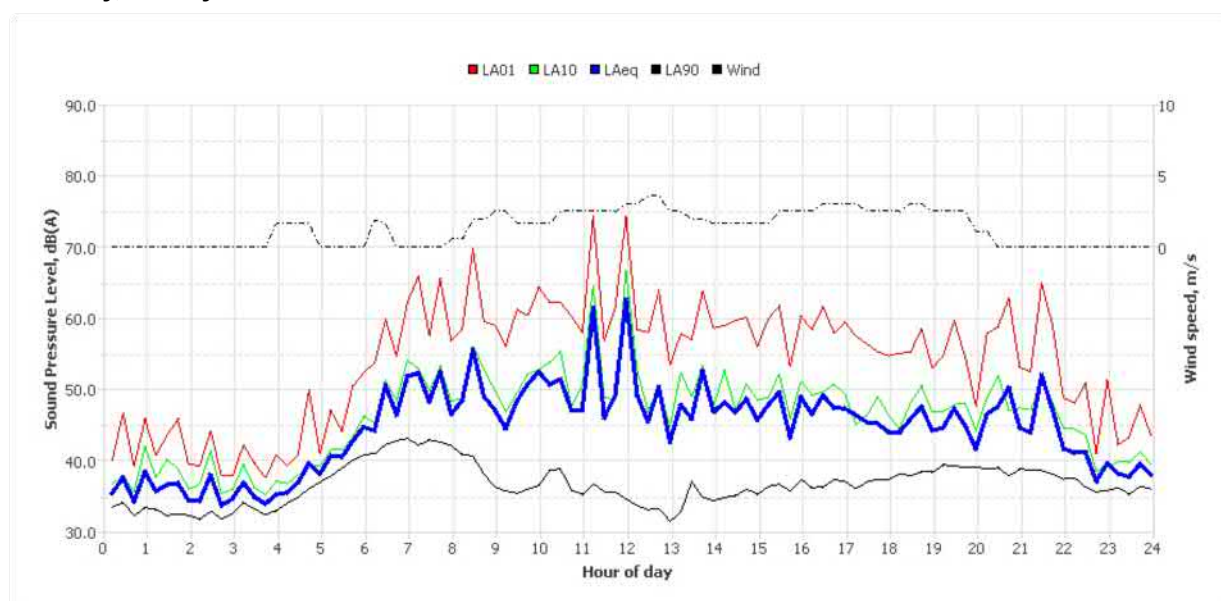
Typical Day



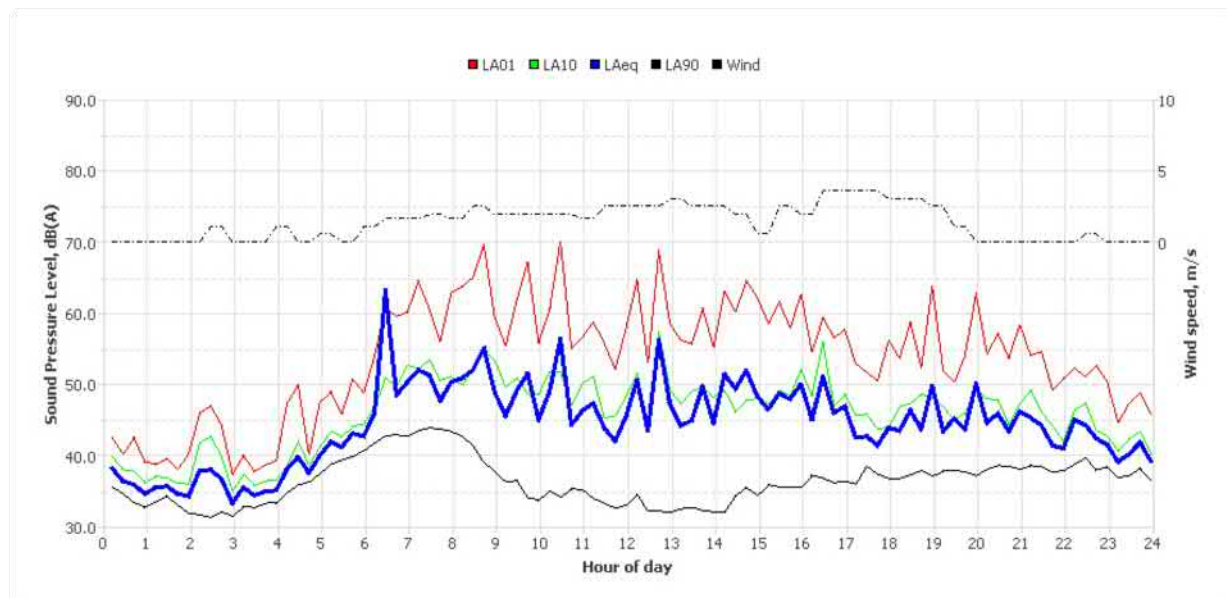
Wednesday, 15 May 2019



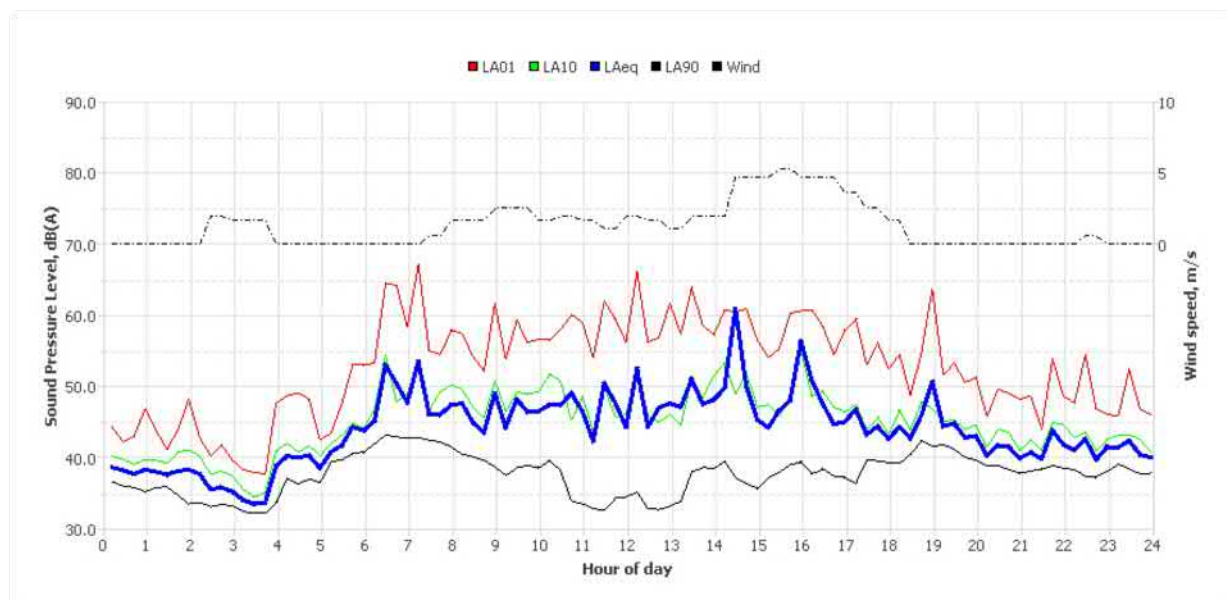
Thursday, 16 May 2019



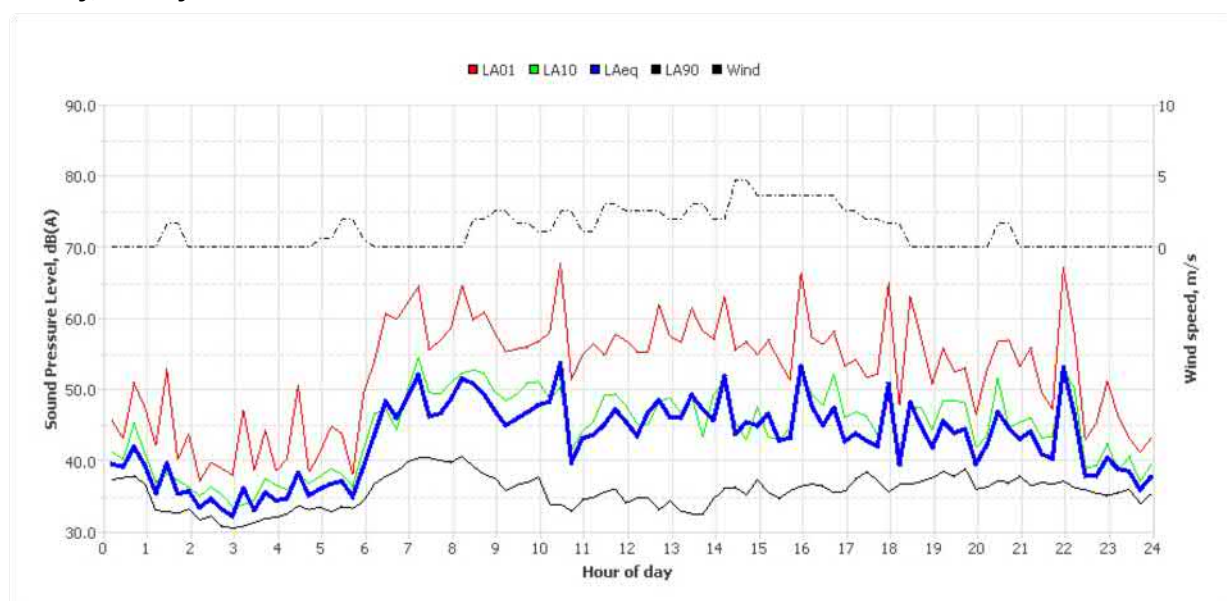
Friday, 17 May 2019



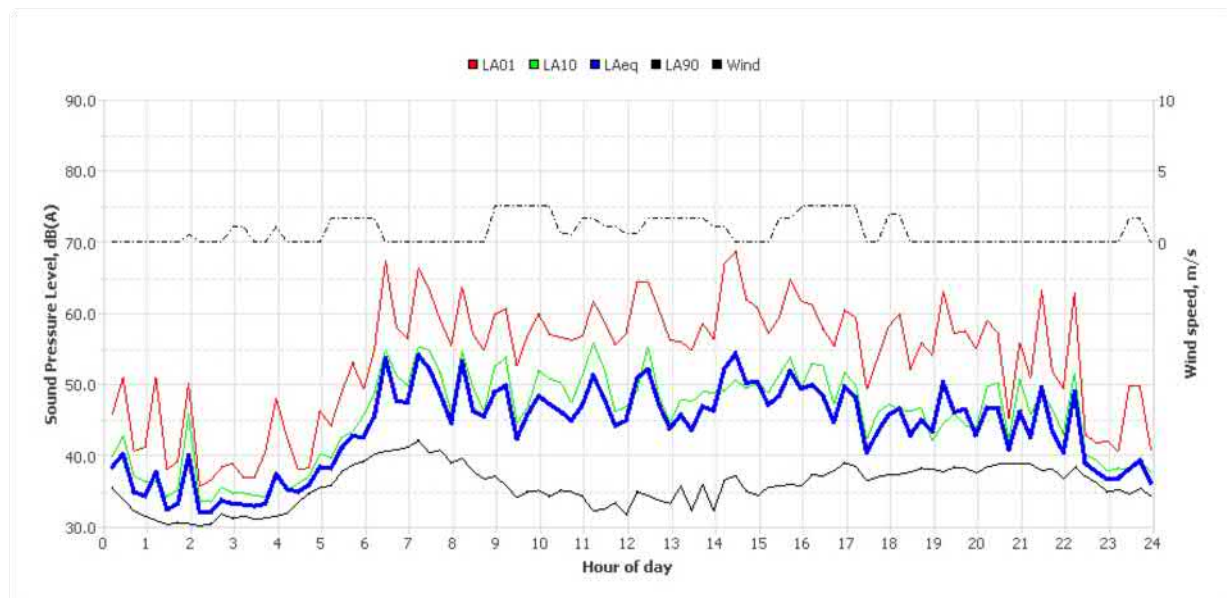
Saturday, 18 May 2019



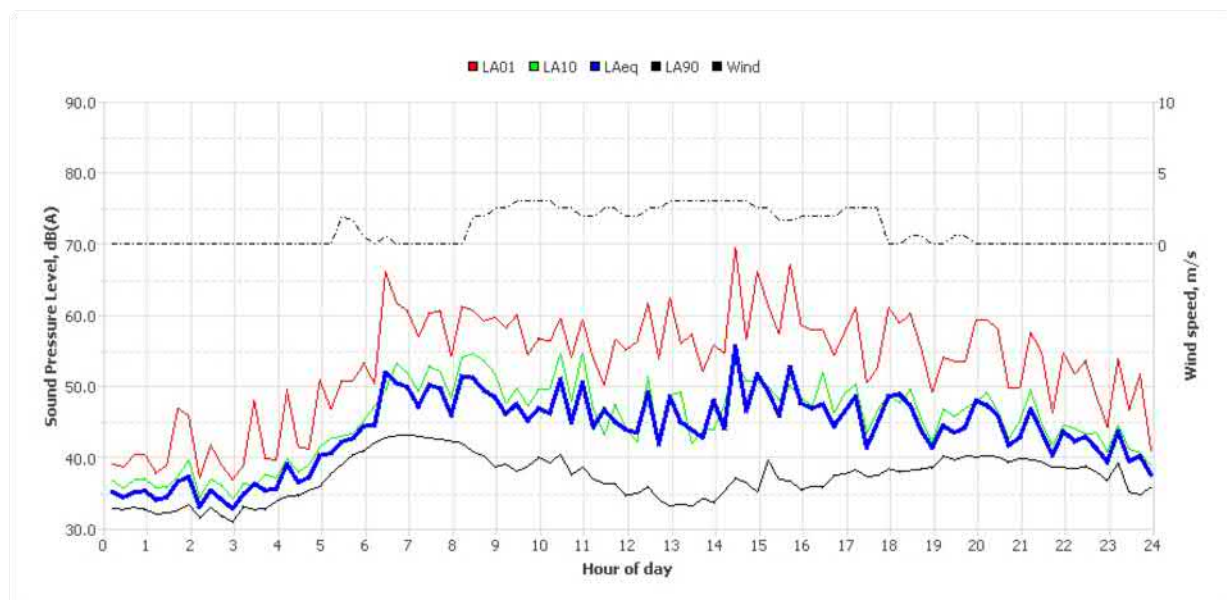
Sunday, 19 May 2019



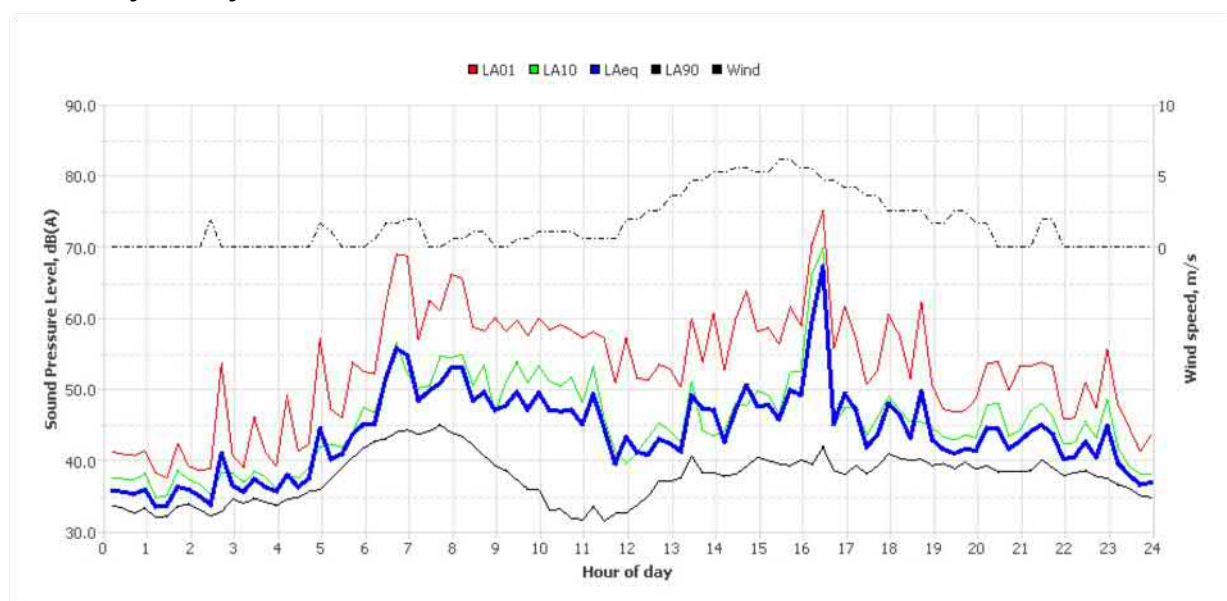
Monday, 20 May 2019



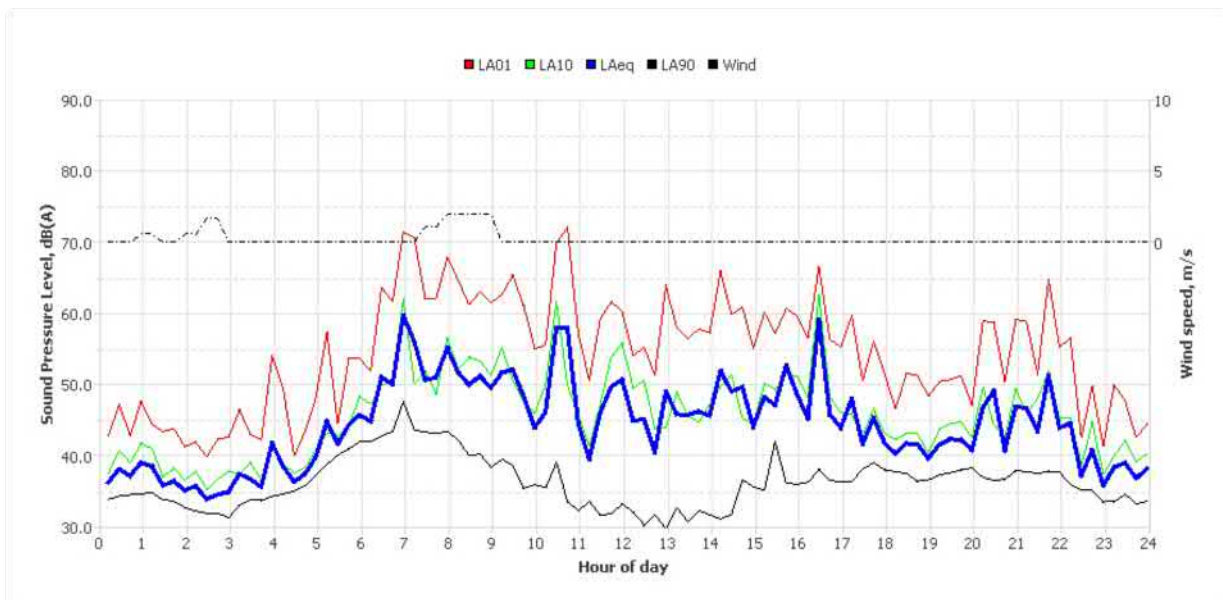
Tuesday, 21 May 2019



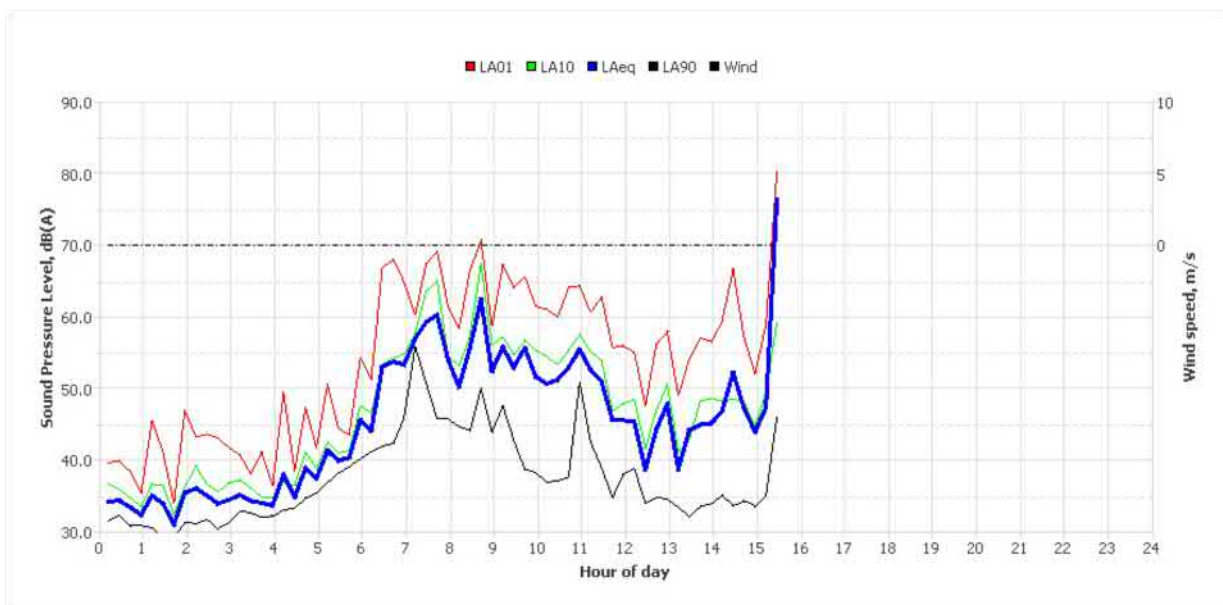
Wednesday, 22 May 2019



Thursday, 23 May 2019



Friday, 24 May 2019



Noise Logger Report

7 Pile Street, Dulwich Hill



Item	Information
Logger Type	Rion NL21
Serial number	876010
Address	7 Pile Street, Dulwich Hill
Location	Front Yard
Facade / Free Field	Free Field
Environment	Background dominated by nature. Typical suburban street noise environment.

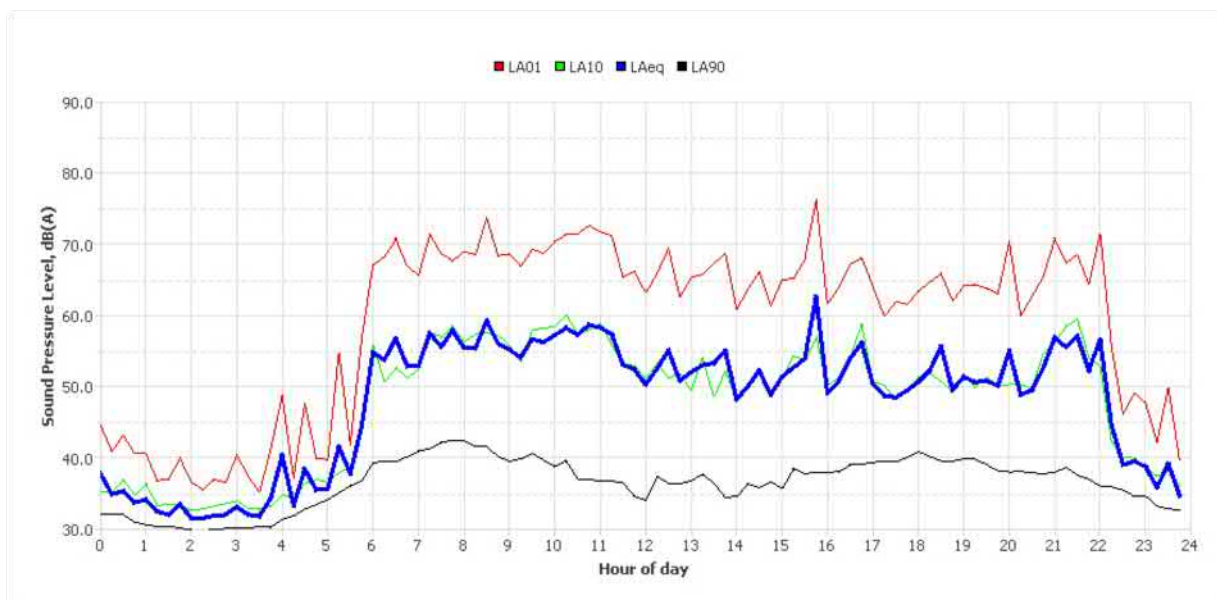
Measured noise levels

Logging Date	L _{Aeq} Day	Eve	Night	ABL Day	Eve	Night	L _{Aeq} ,15hr	L _{Aeq} ,9hr
Wed May 15 2019	52	59	47	-	38	-	56	47
Thu May 16 2019	59	58	46	35	39	29	59	46
Fri May 17 2019	59	59	50	33	38	32	59	50
Sat May 18 2019	50	47	42	35	38	30	50	42
Sun May 19 2019	55	58	49	34	36	31	56	49
Mon May 20 2019	58	57	50	33	38	28	58	50
Tue May 21 2019	58	56	51	34	37	30	58	51
Wed May 22 2019	57	54	46	-	38	30	56	46
Thu May 23 2019	52	56	47	32	37	31	53	47
Fri May 24 2019	62	-	50	35	-	-	62	50
Summary	58	57	48	34	38	30	58	48

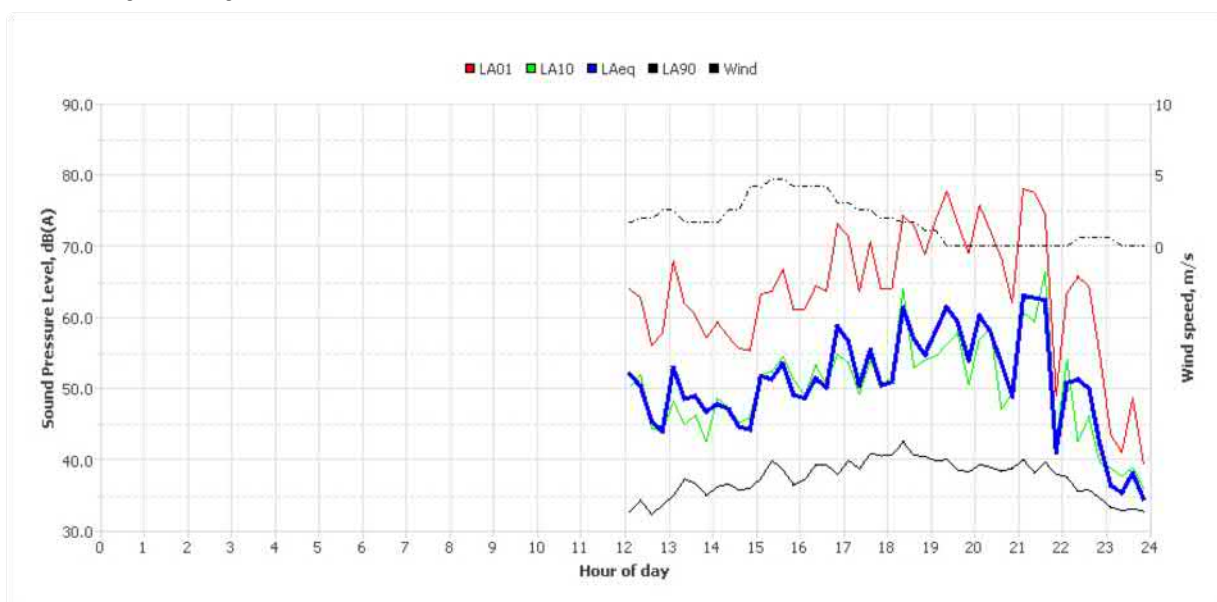
Note: Results denoted with '-' do not contain enough valid data for a value to be calculated. The data has been excluded either manually or automatically as a result of adverse weather conditions.

Logger Location	Logger Deployment Photo

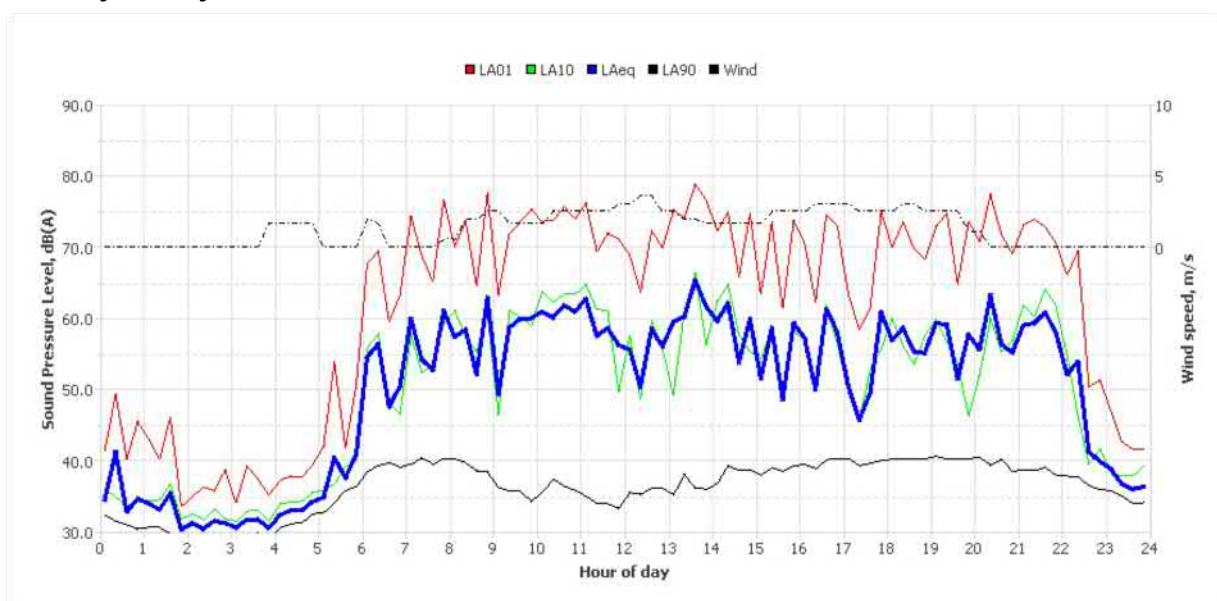
Typical Day



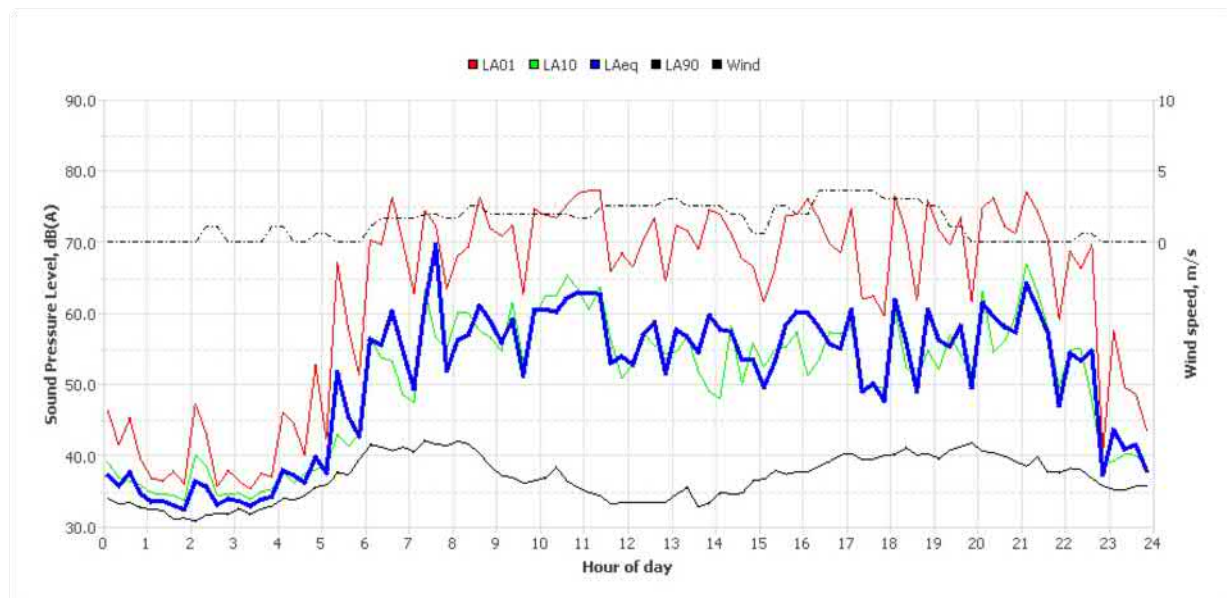
Wednesday, 15 May 2019



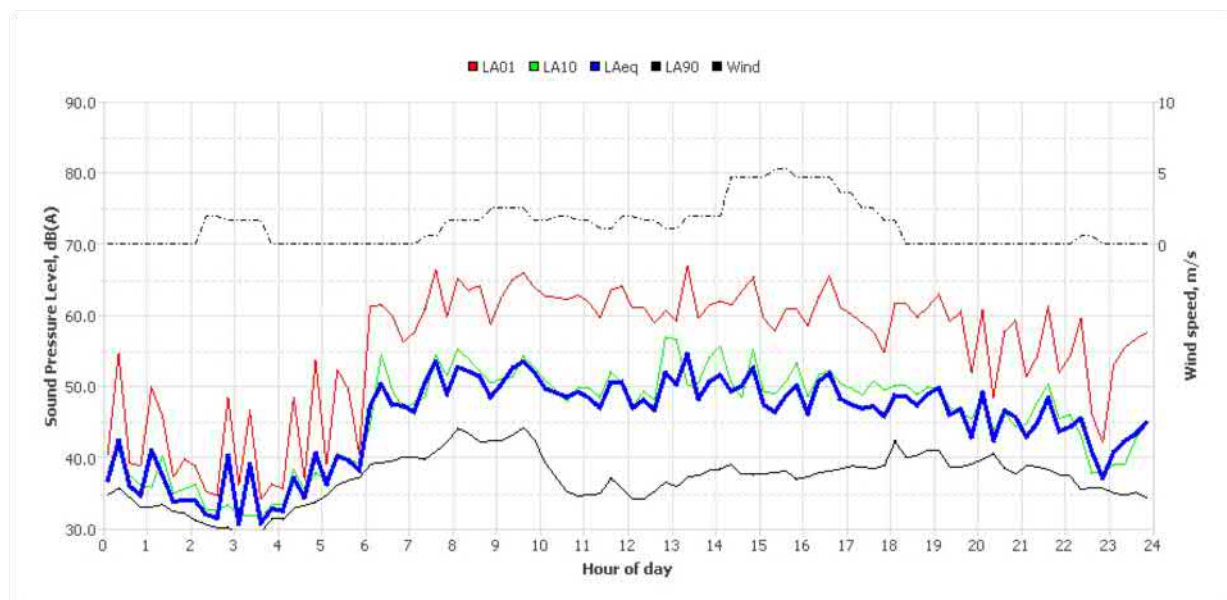
Thursday, 16 May 2019



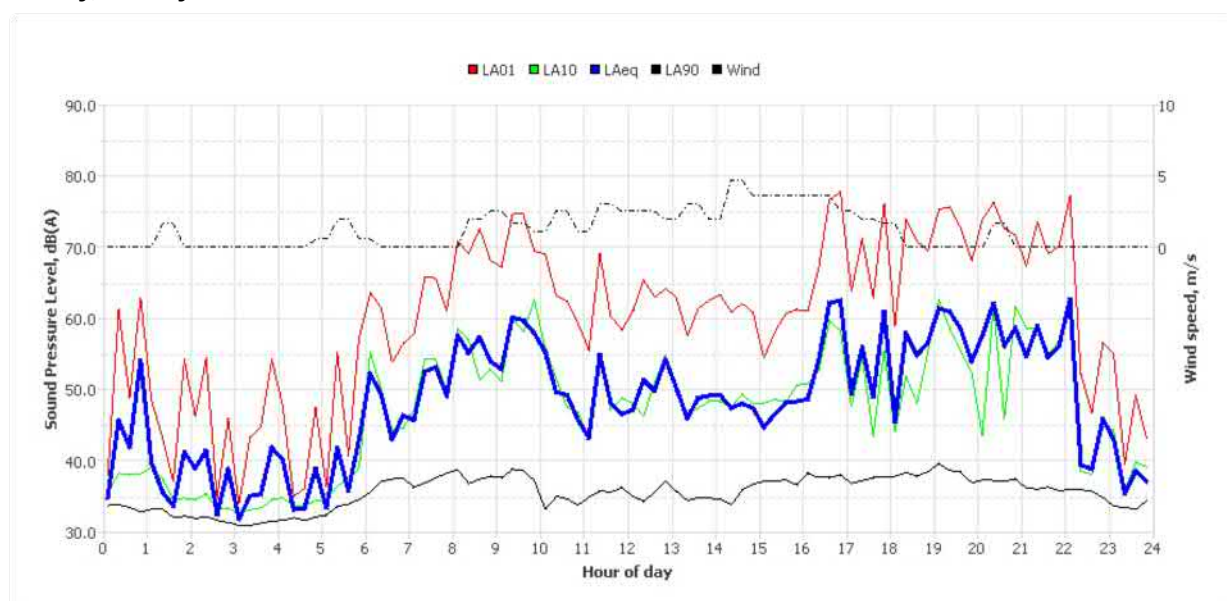
Friday, 17 May 2019



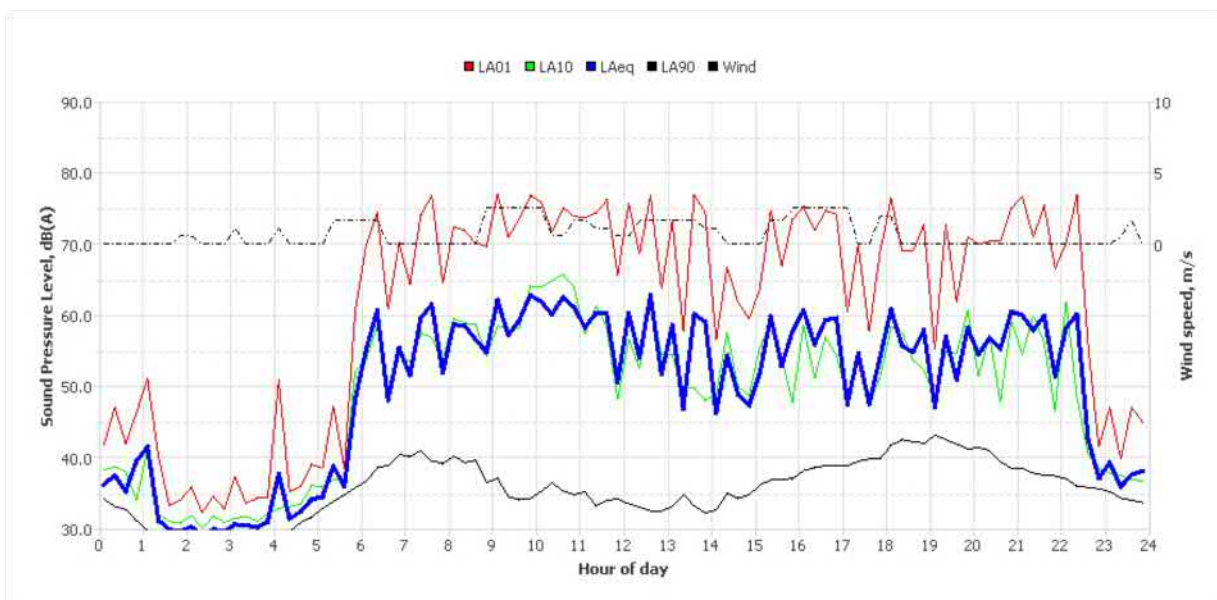
Saturday, 18 May 2019



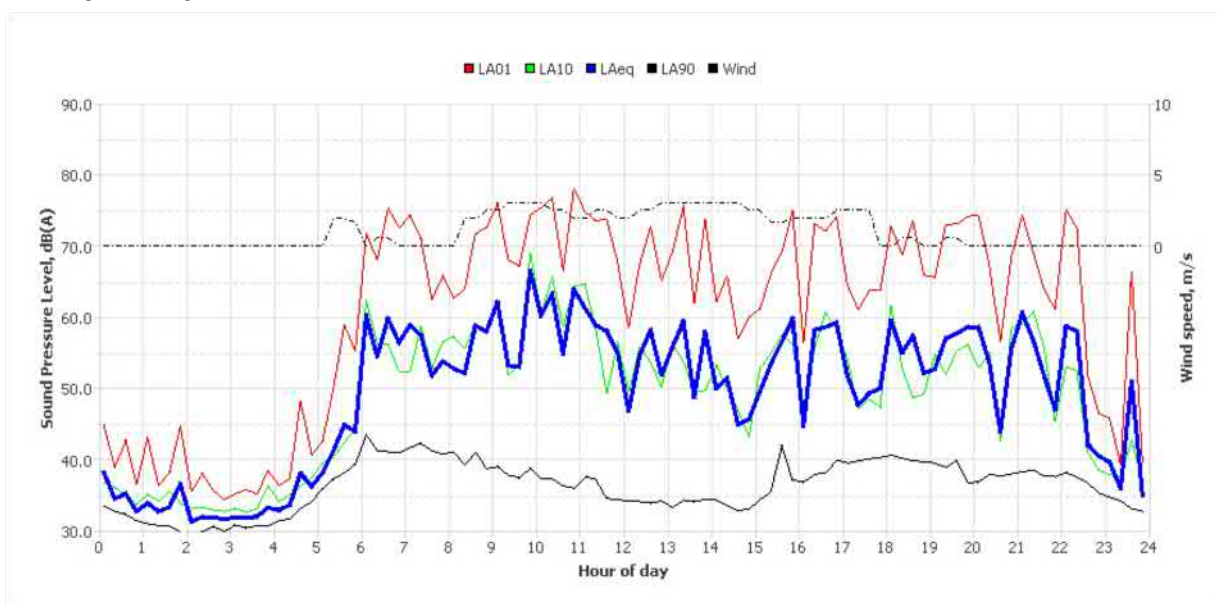
Sunday, 19 May 2019



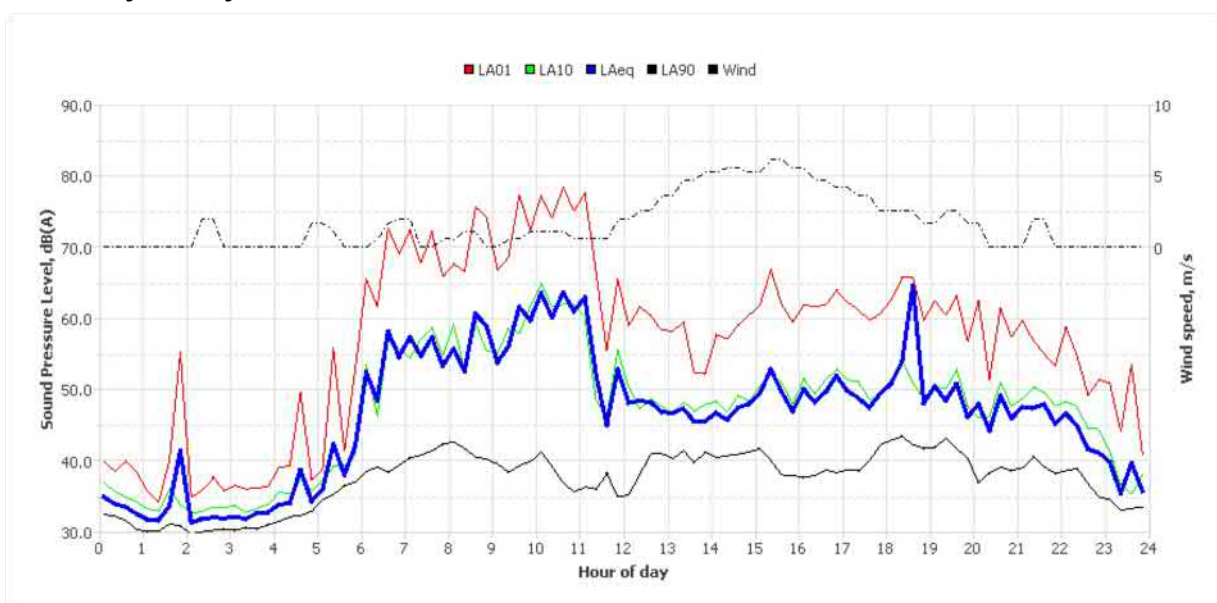
Monday, 20 May 2019



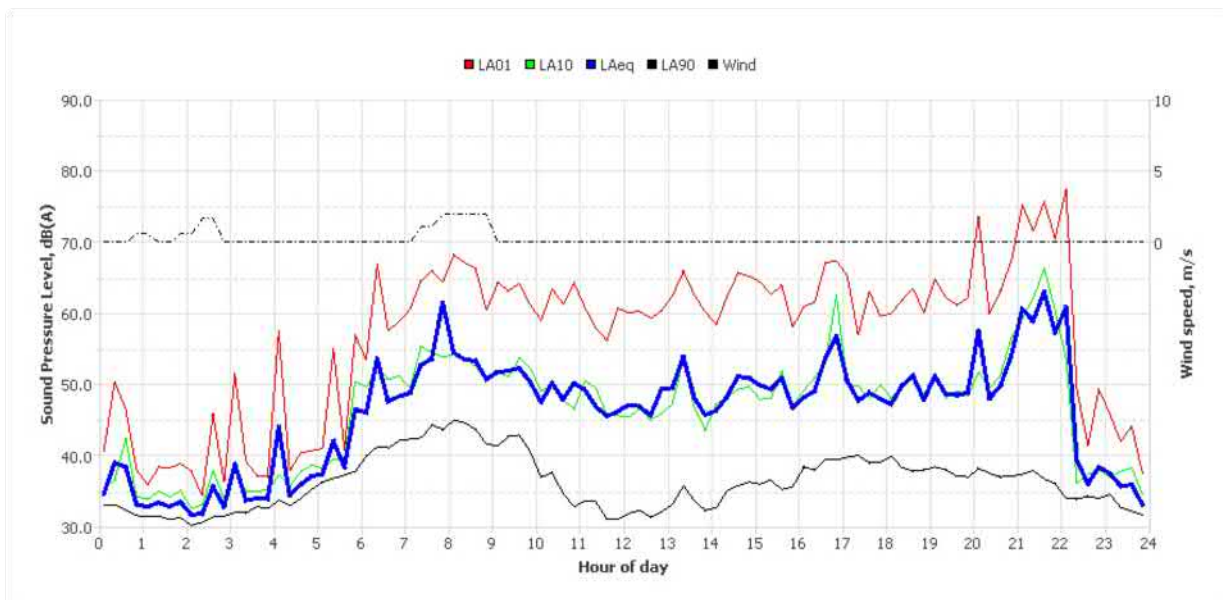
Tuesday, 21 May 2019



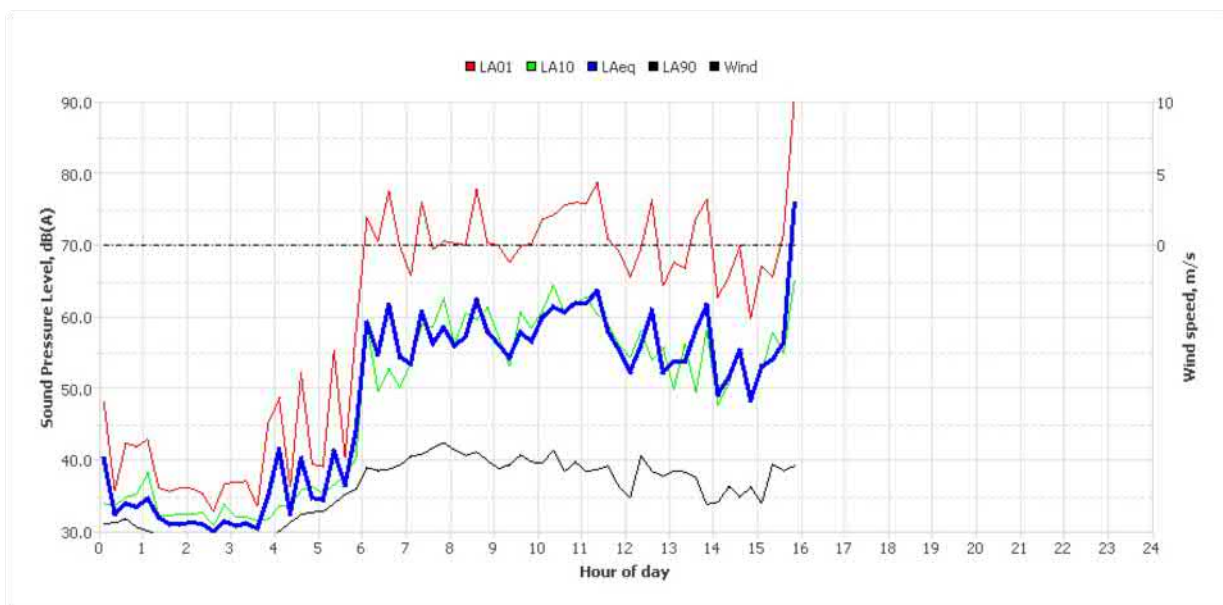
Wednesday, 22 May 2019



Thursday, 23 May 2019



Friday, 24 May 2019



Noise Logger Report

50 Brown Street, St Peters



Item	Information
Logger Type	Rion NL21
Serial number	265112
Address	50 Brown Street, St Peters
Location	Front Yard
Facade / Free Field	Free Field
Environment	Noise environment dominated by aircraft noise. 78 to 73dBA. TV noise from inside house can be heard but not clearly. Cicadas intermittent clearly audible.

Measured noise levels

Logging Date	L _{Aeq} Day	Eve	Night	ABL Day	Eve	Night	L _{Aeq} 15hr	L _{Aeq} 9hr
Wed Feb 14 2018	61	59	60	-	42	-	60	60
Thu Feb 15 2018	61	60	56	42	44	-	61	56
Fri Feb 16 2018	60	59	59	43	41	-	60	59
Sat Feb 17 2018	62	60	55	43	44	-	62	55
Sun Feb 18 2018	61	62	56	41	44	-	61	56
Mon Feb 19 2018	60	61	53	43	41	-	60	53
Tue Feb 20 2018	61	59	54	46	39	36	60	54
Wed Feb 21 2018	60	61	55	42	43	-	60	55
Thu Feb 22 2018	62	-	52	-	-	-	62	52
Summary	61	60	56	43	42	36	61	56

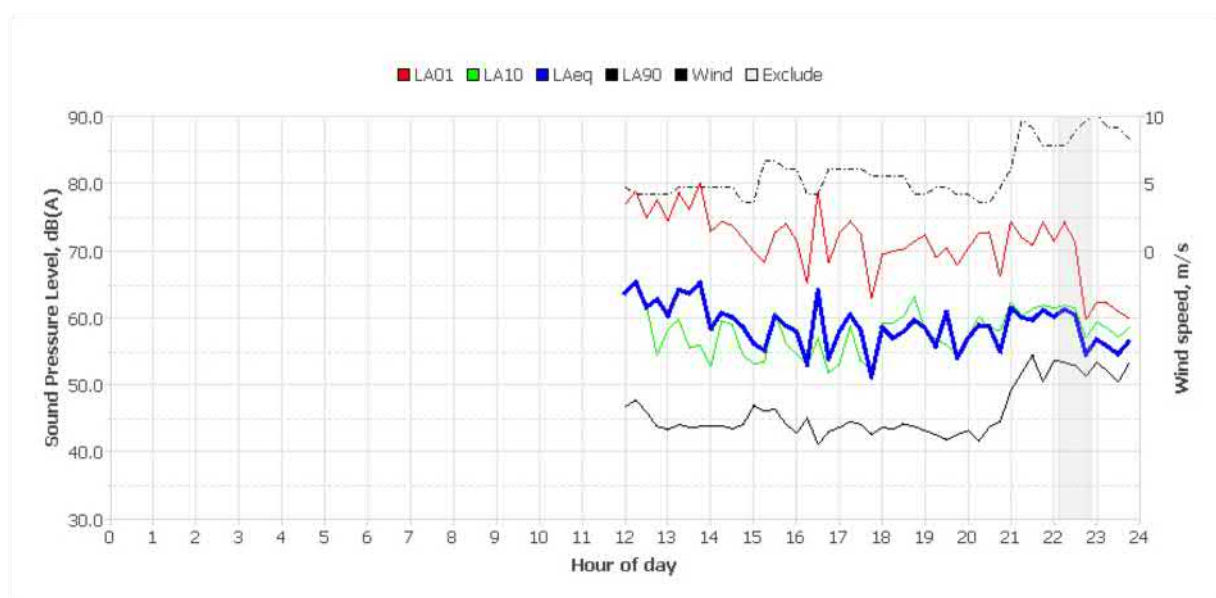
Note: Results denoted with '-' do not contain enough valid data for a value to be calculated. The data has been excluded either manually or automatically as a result of adverse weather conditions.

Logger Location	Logger Deployment Photo

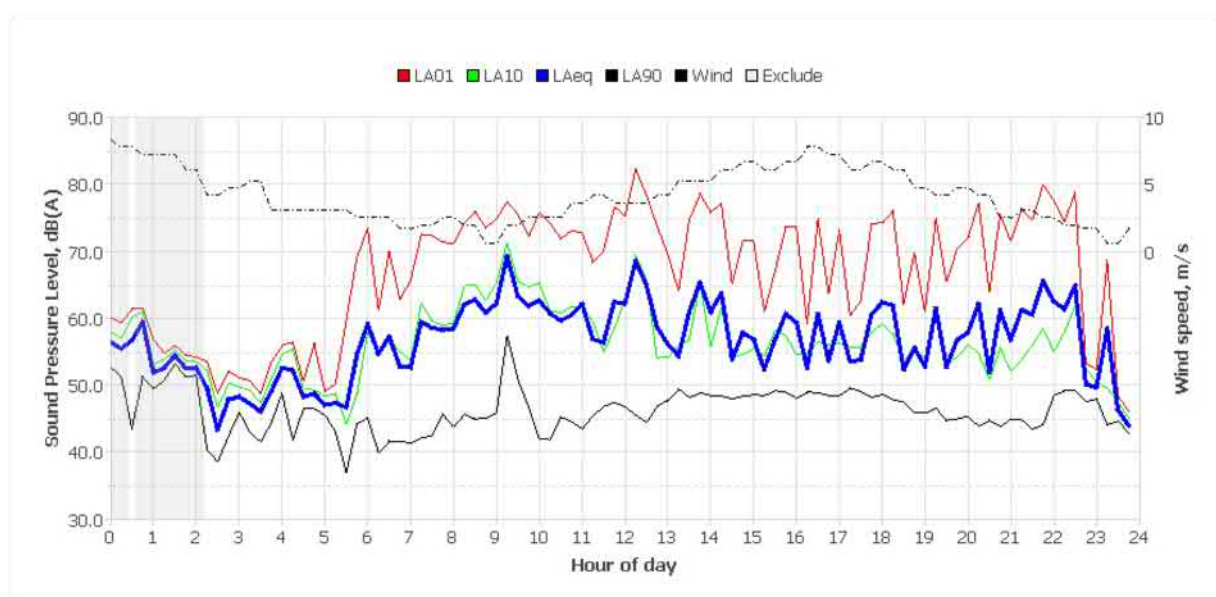
Typical Day



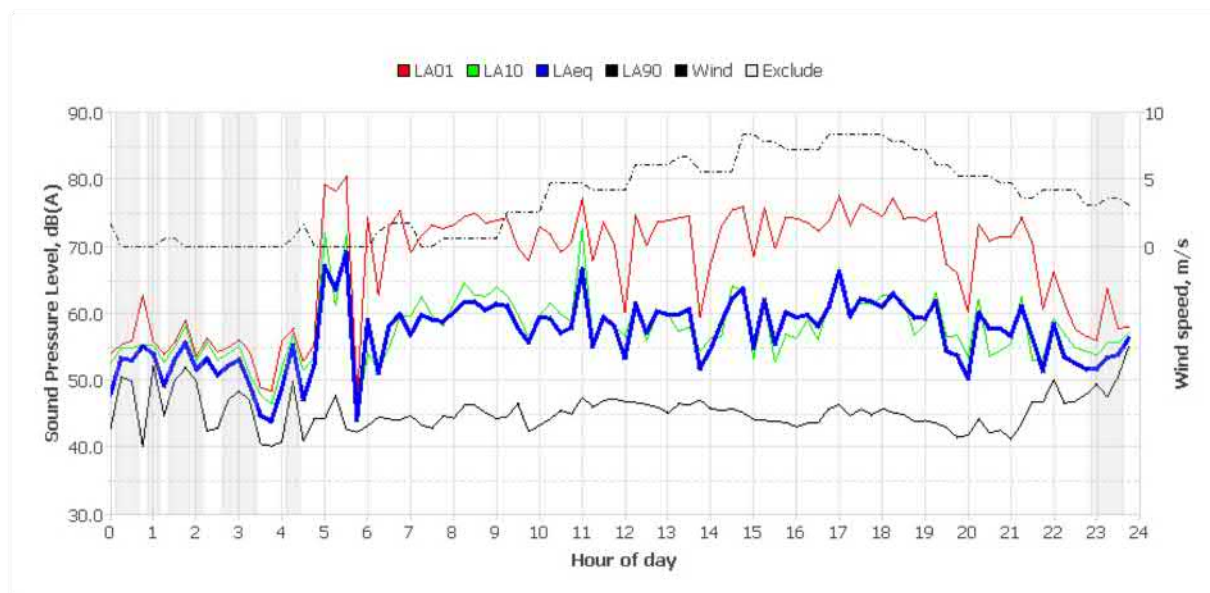
Wednesday, 14 Feb 2018



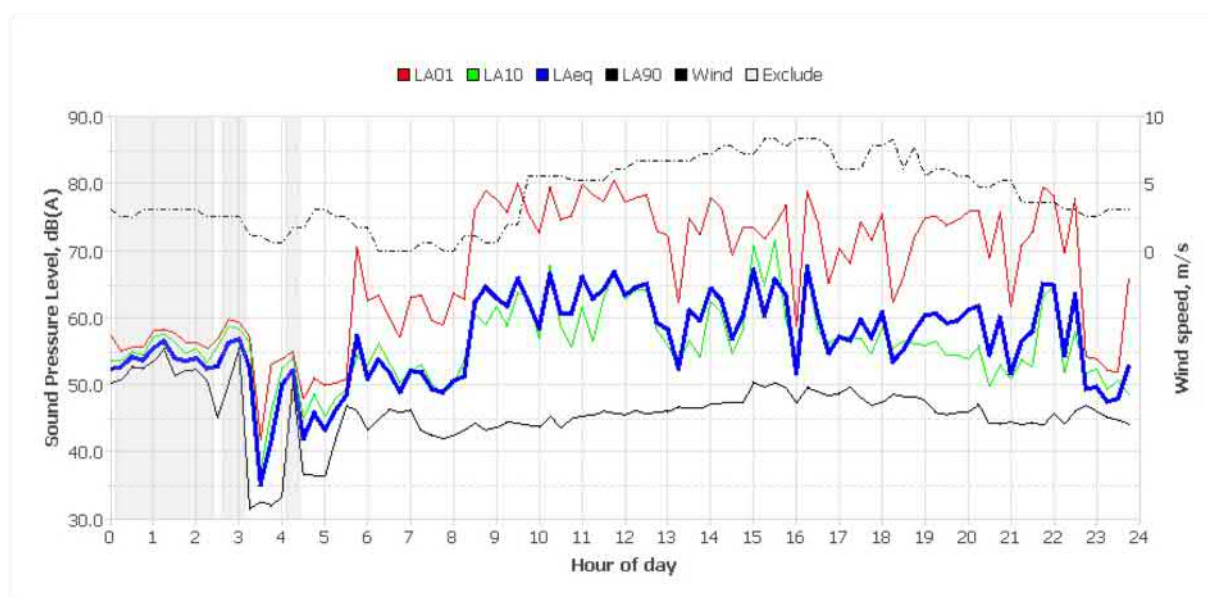
Thursday, 15 Feb 2018



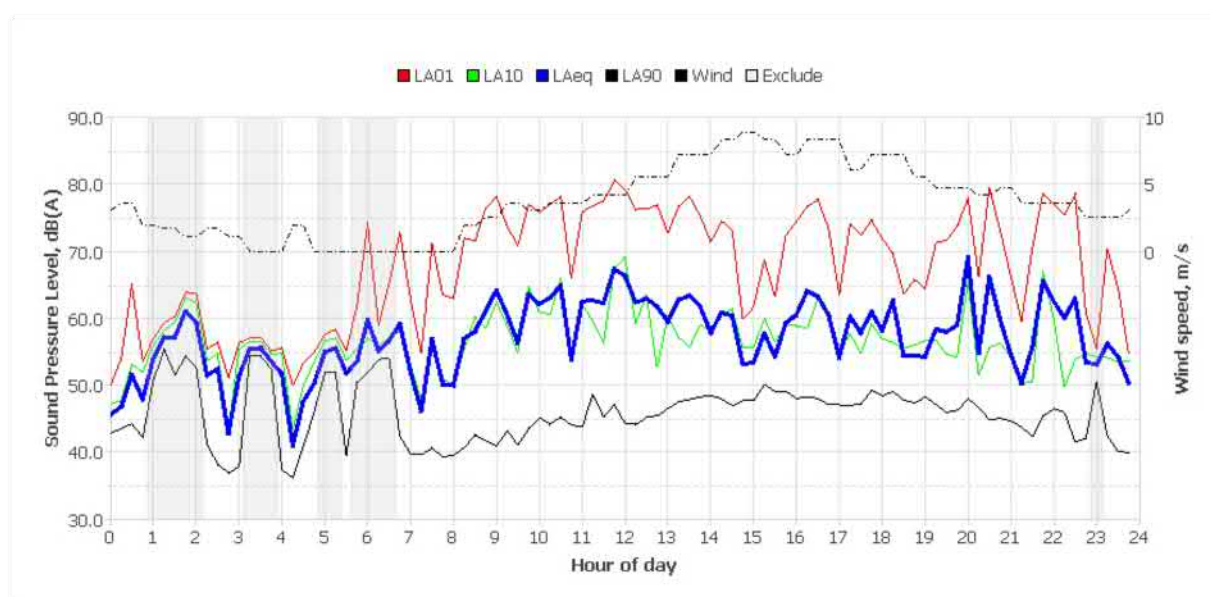
Friday, 16 Feb 2018



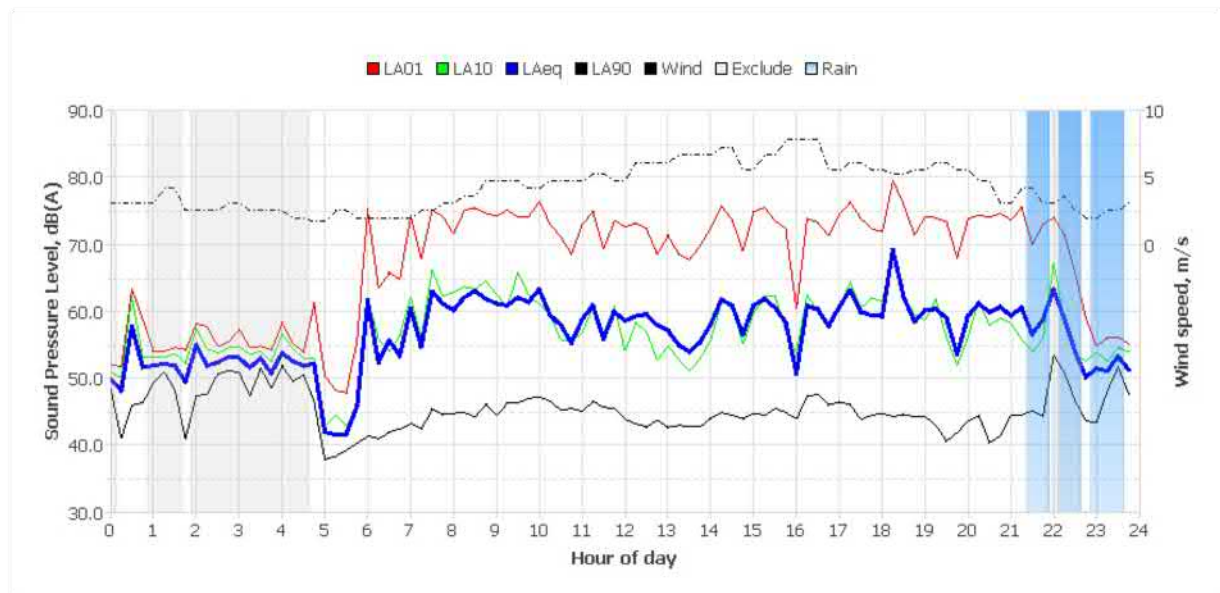
Saturday, 17 Feb 2018



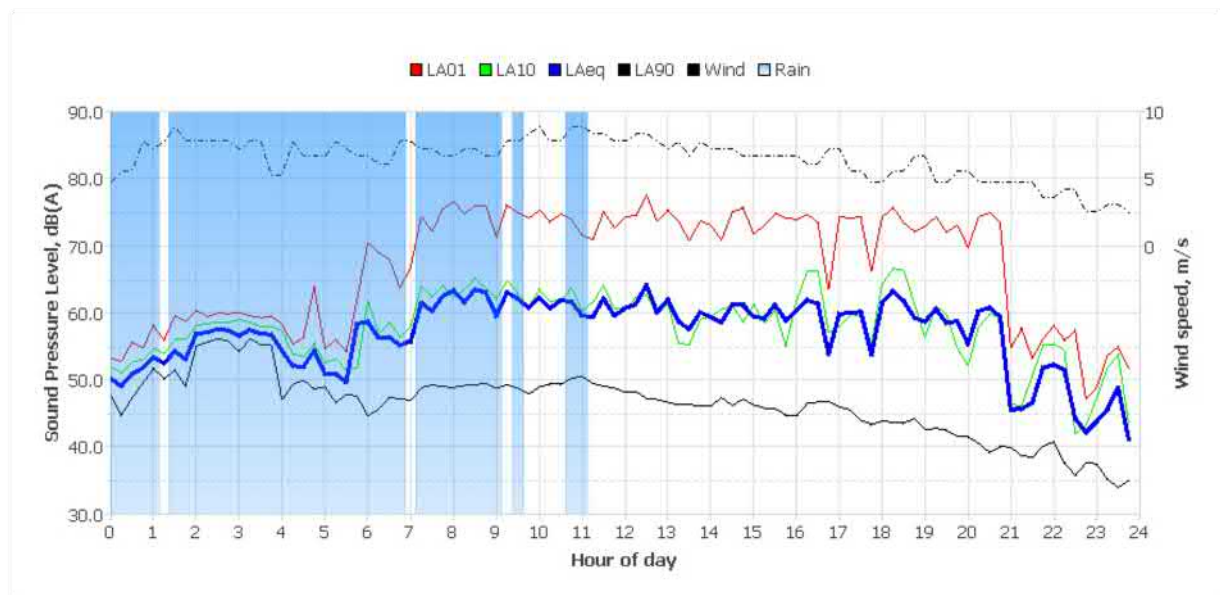
Sunday, 18 Feb 2018



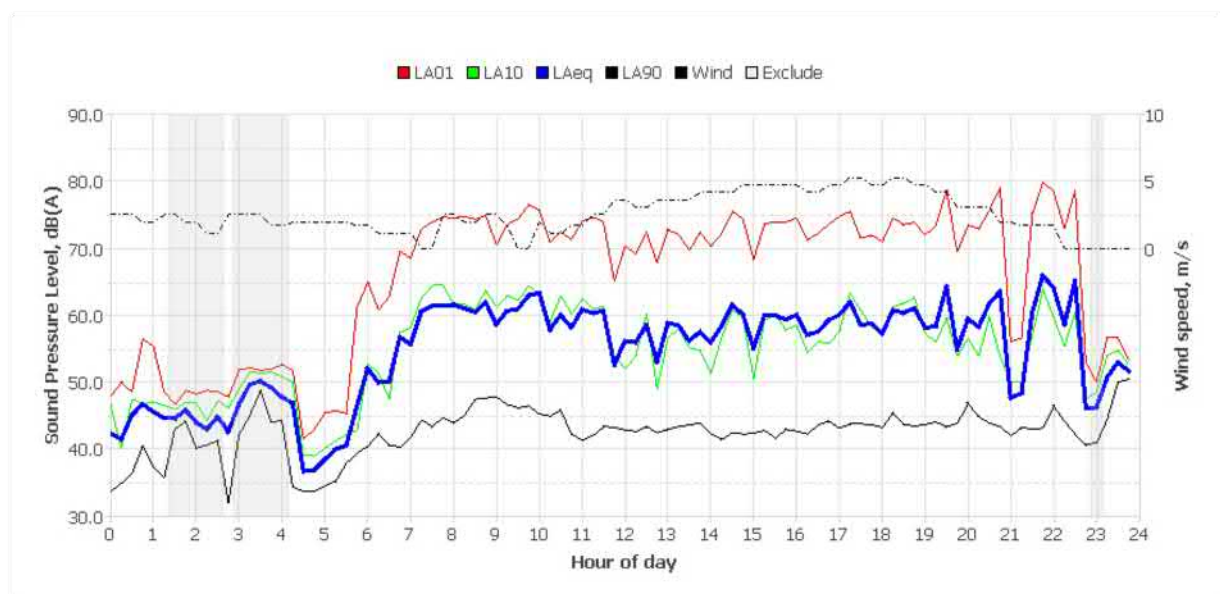
Monday, 19 Feb 2018

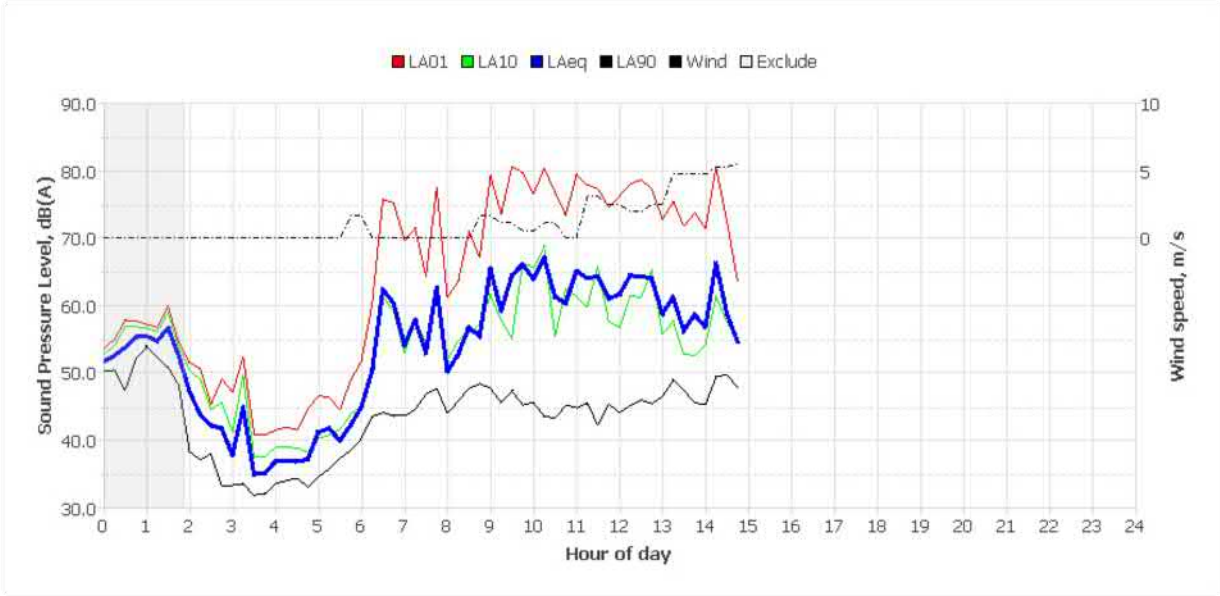


Tuesday, 20 Feb 2018



Wednesday, 21 Feb 2018





Noise Logger Report

17 Claverdon Avenue, Picnic Point



Item	Information
Logger Type	ARL 215
Serial number	15-299-444
Address	17 Claverdon Avenue, Picnic Point
Location	Backyard
Facade / Free Field	Free Field
Environment	Very light winds. Birds calling. Occasional plane flyovers. Some construction noise in the distance including occasional banging and sawing.

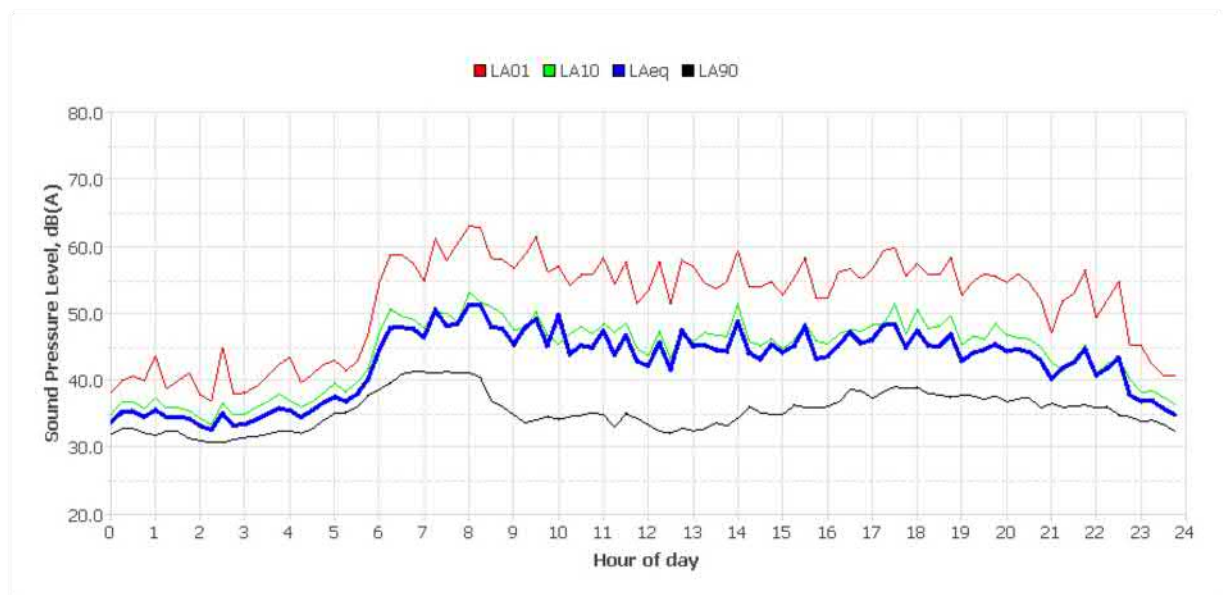
Measured noise levels

Logging Date	L _{Aeq} Day	Eve	Night	ABL Day	Eve	Night	L _{Aeq} 15hr	L _{Aeq} 9hr
Mon May 7 2018	44	42	34	-	32	-	43	34
Tue May 8 2018	51	42	40	29	-	30	50	40
Wed May 9 2018	47	42	39	29	-	27	47	39
Thu May 10 2018	47	45	38	-	-	27	47	38
Fri May 11 2018	47	42	36	-	34	27	45	36
Sat May 12 2018	52	50	42	-	34	-	51	42
Sun May 13 2018	48	47	40	-	-	26	47	40
Mon May 14 2018	49	43	40	-	31	27	47	40
Tue May 15 2018	49	46	41	29	37	26	48	41
Wed May 16 2018	48	45	41	34	-	-	47	41
Summary	49	45	40	29	34	27	48	40

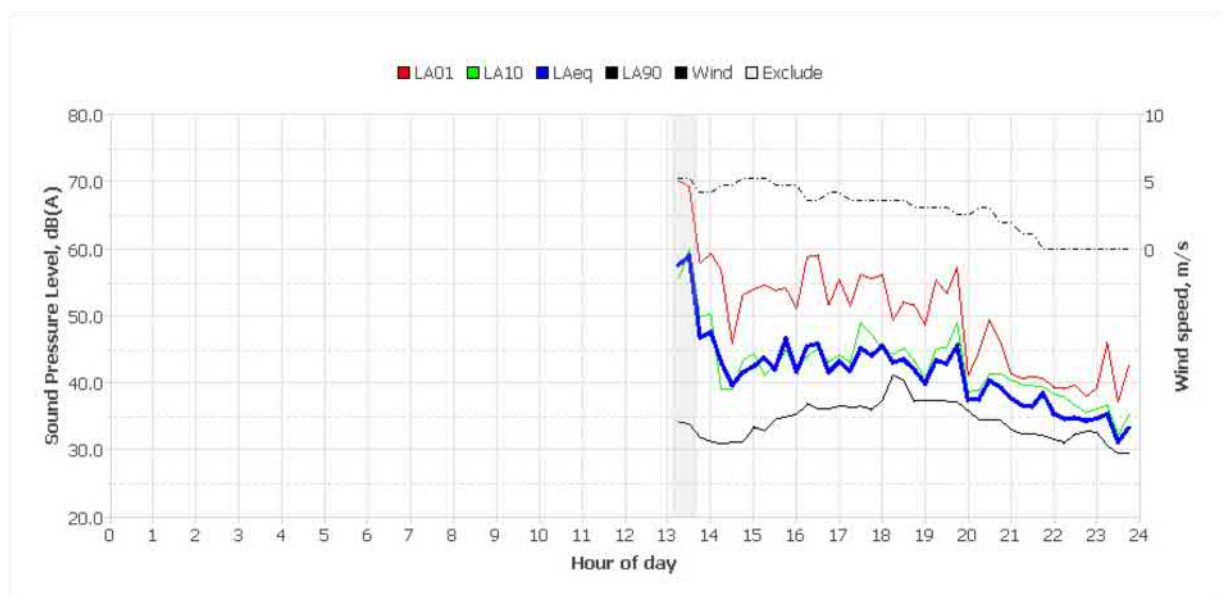
Note: Results denoted with '-' do not contain enough valid data for a value to be calculated. The data has been excluded either manually or automatically as a result of adverse weather conditions.

Logger Location	Logger Deployment Photo
	

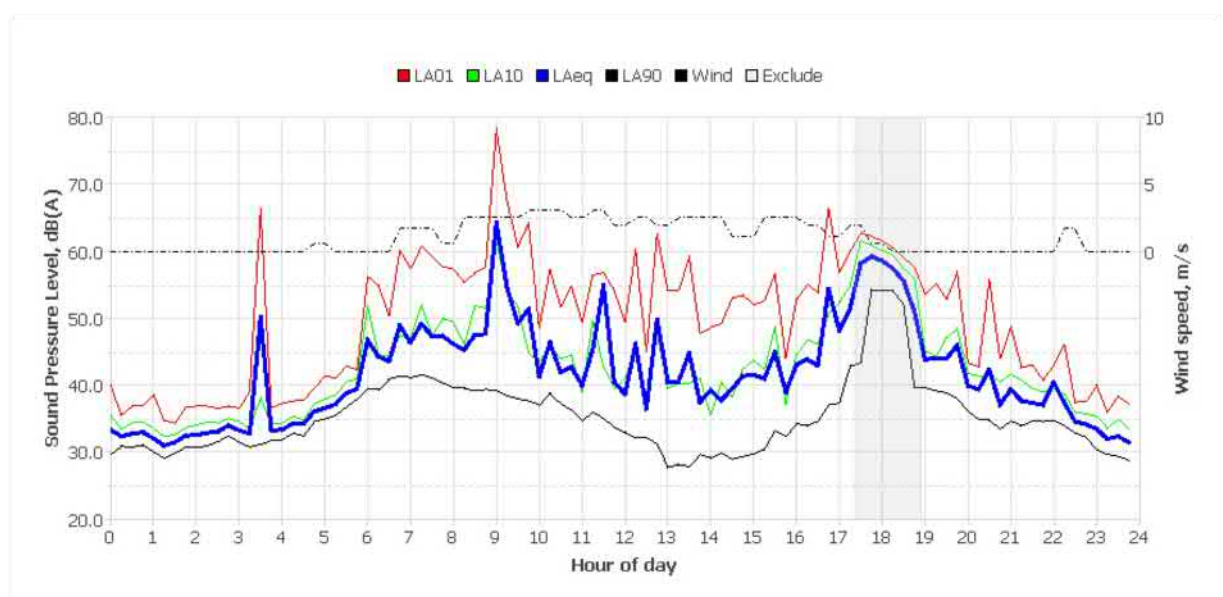
Typical Day



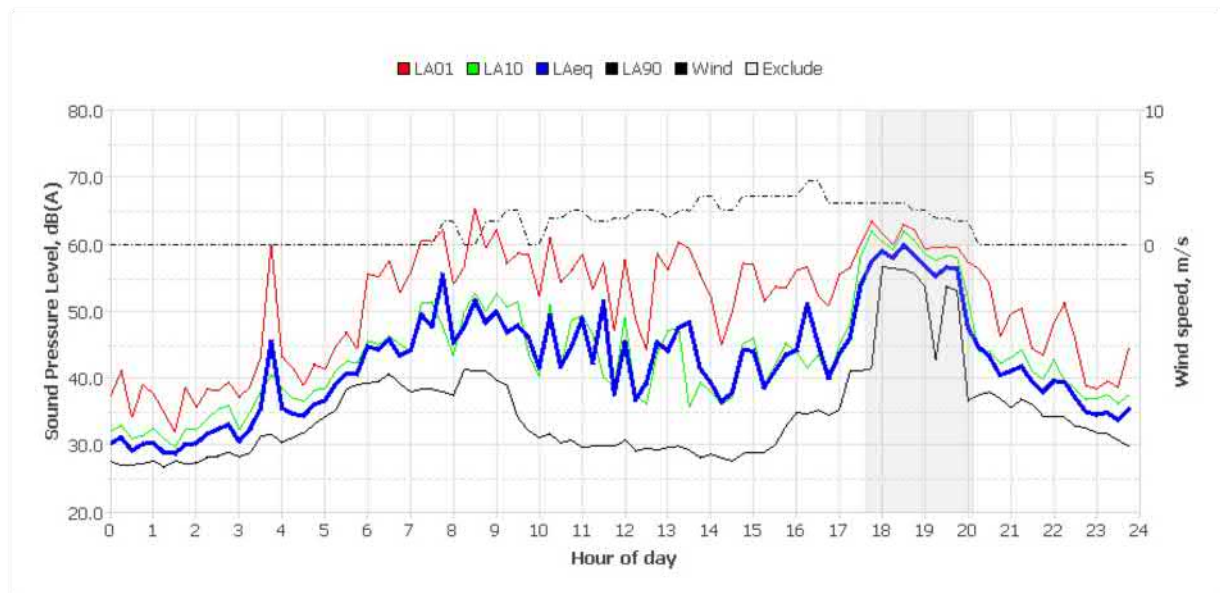
Monday, 07 May 2018



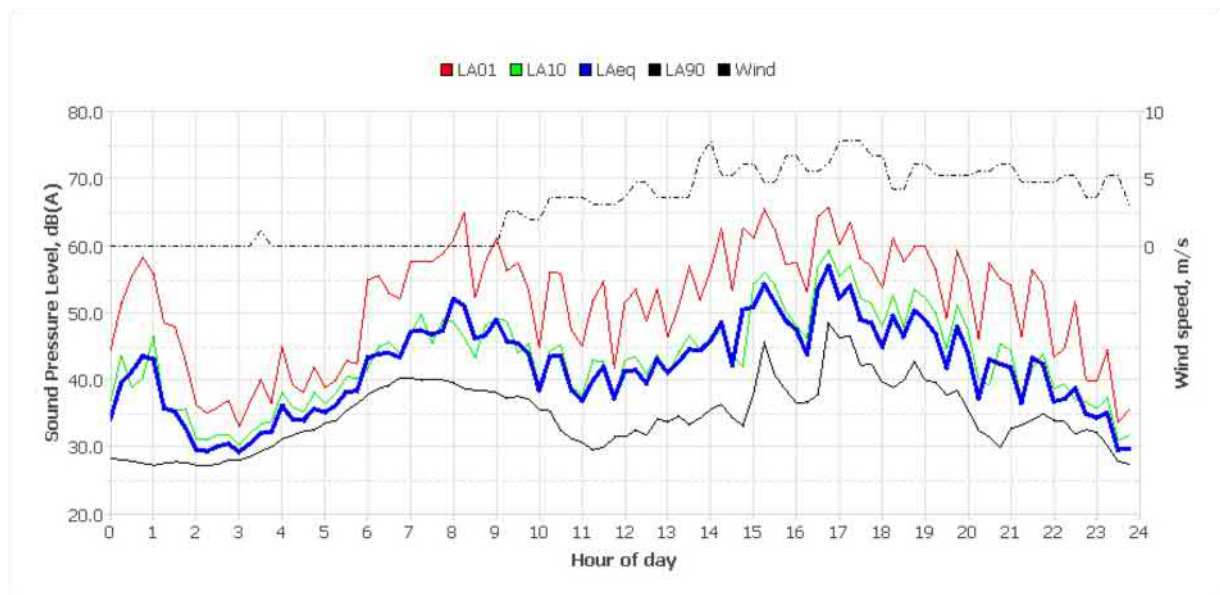
Tuesday, 08 May 2018



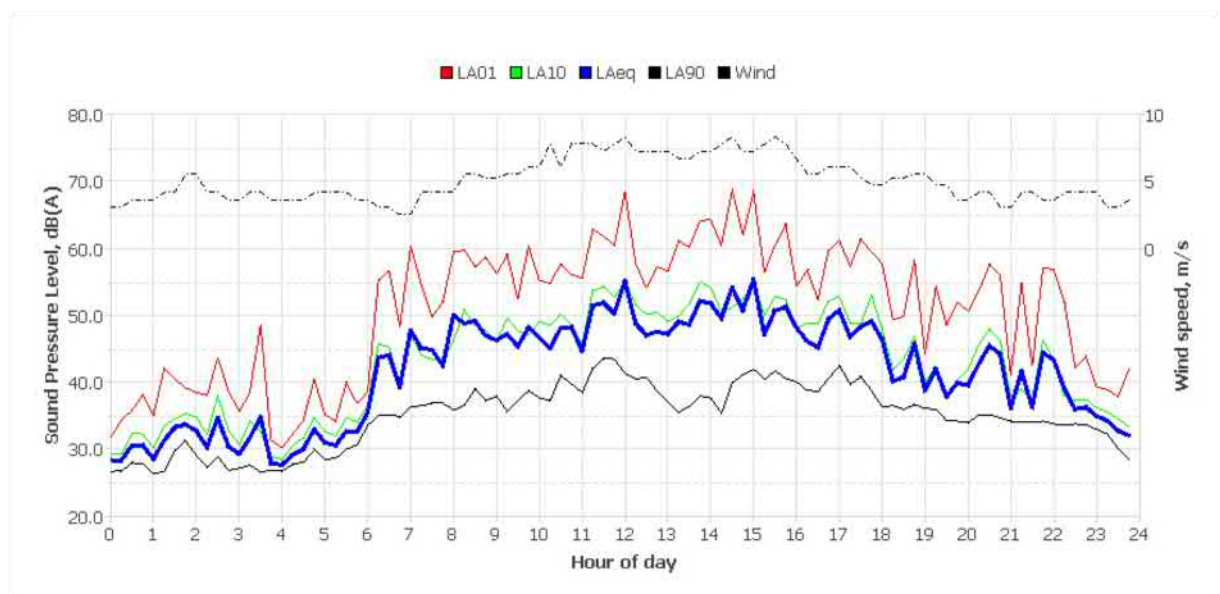
Wednesday, 09 May 2018



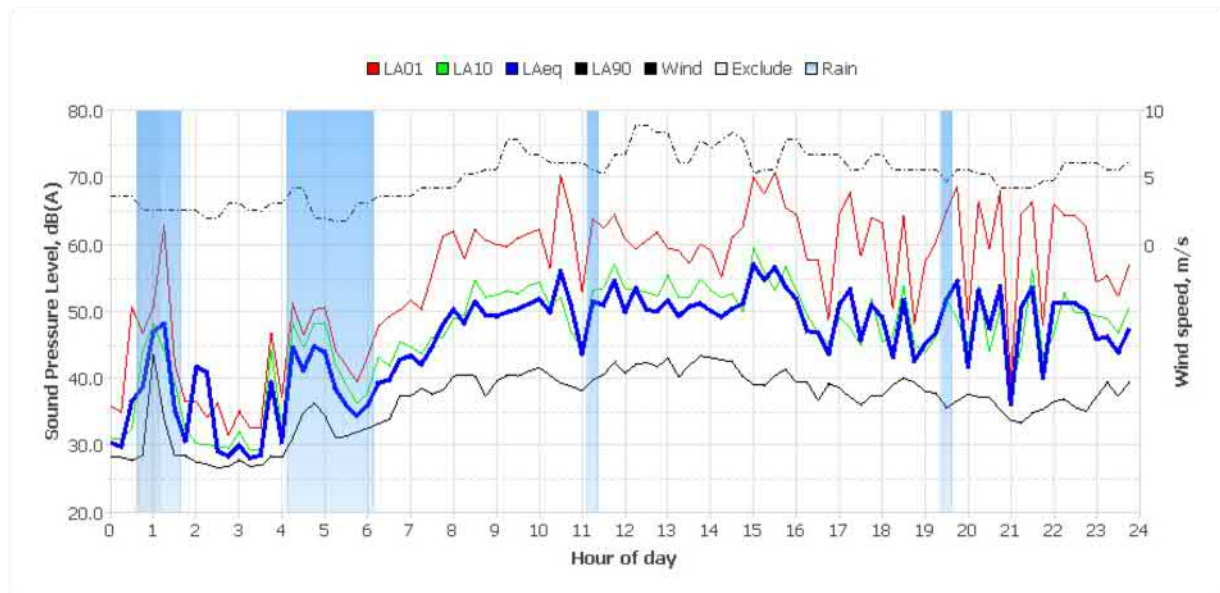
Thursday, 10 May 2018



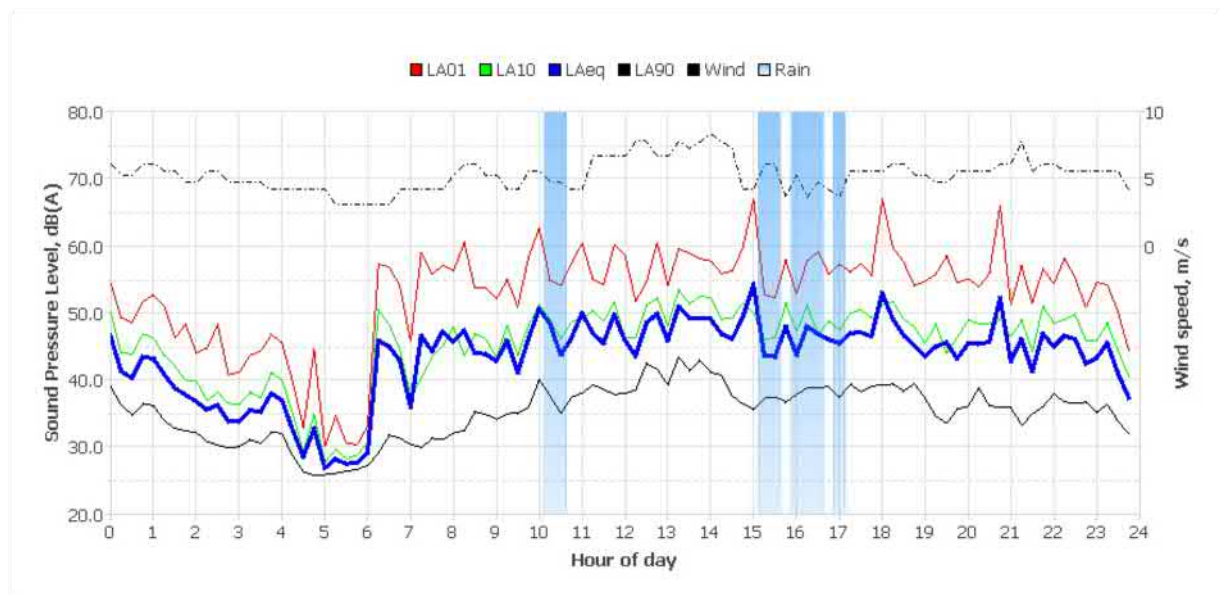
Friday, 11 May 2018



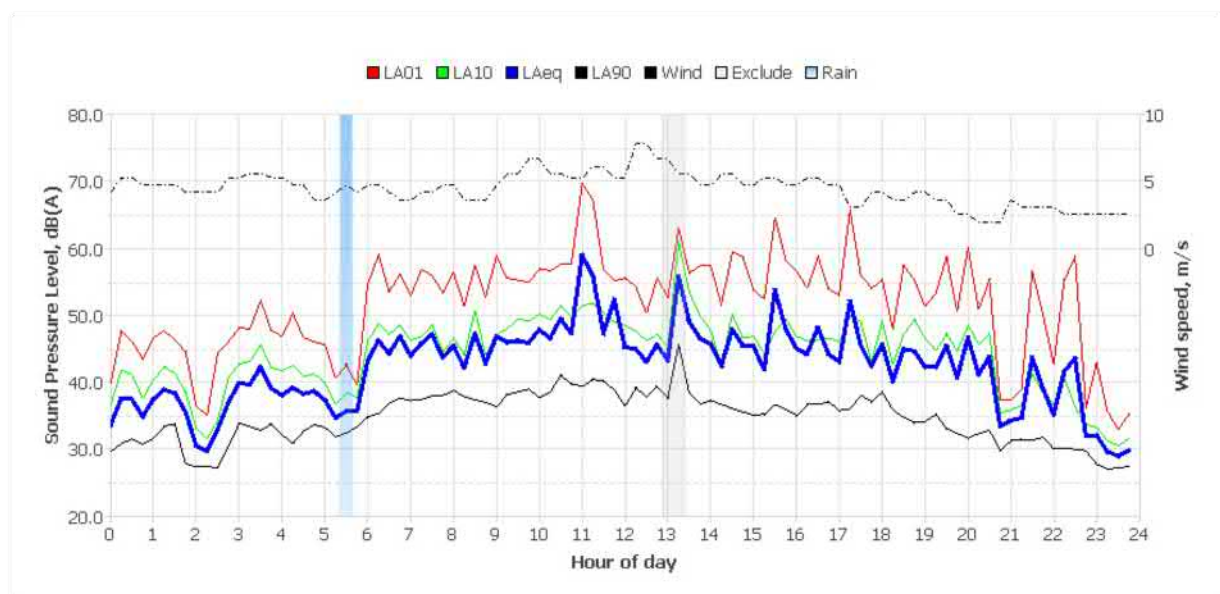
Saturday, 12 May 2018



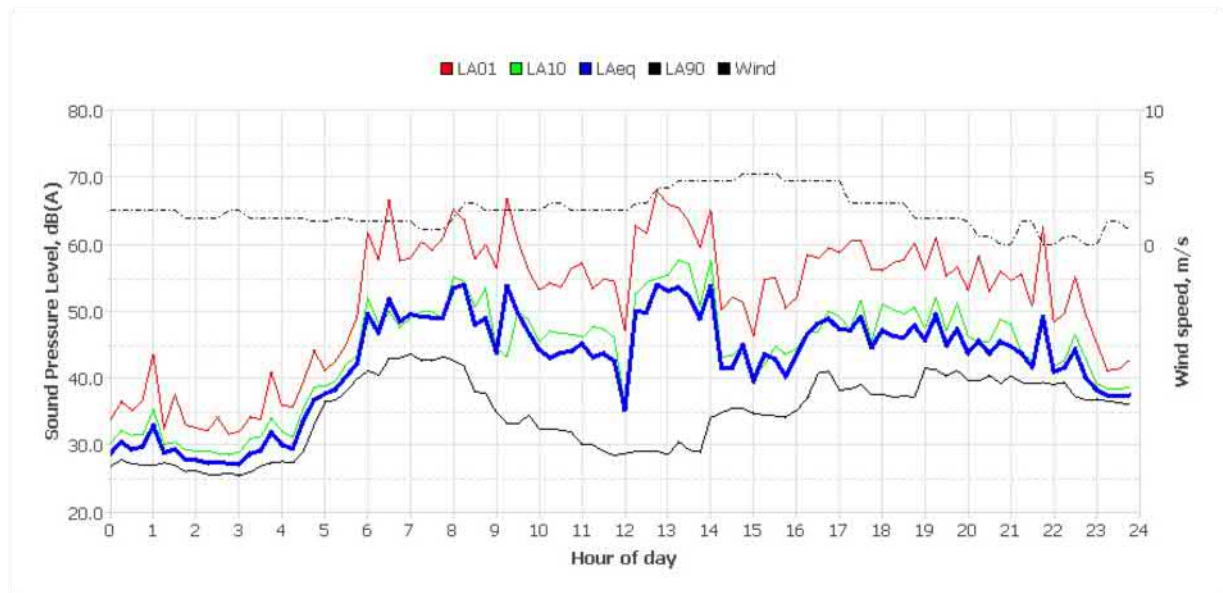
Sunday, 13 May 2018



Monday, 14 May 2018



Tuesday, 15 May 2018



Wednesday, 16 May 2018

