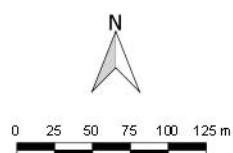


2 LINCOLN STREET  
 LANE COVE  
 NSW 2066  
 AUSTRALIA  
 T: +61 2 9427 8100  
 www.slrconsulting.com

The content contained within this document may be based on third party data.  
 SLR Consulting Australia Pty Ltd does not guarantee the accuracy of such information.

Project No.: 510.16185  
 Date: 31/07/2017  
 Drawn by: JR  
 Scale: 1:5,000  
 Sheet Size: @ A4  
 Projection: GDA 1994 MGA Zone 56

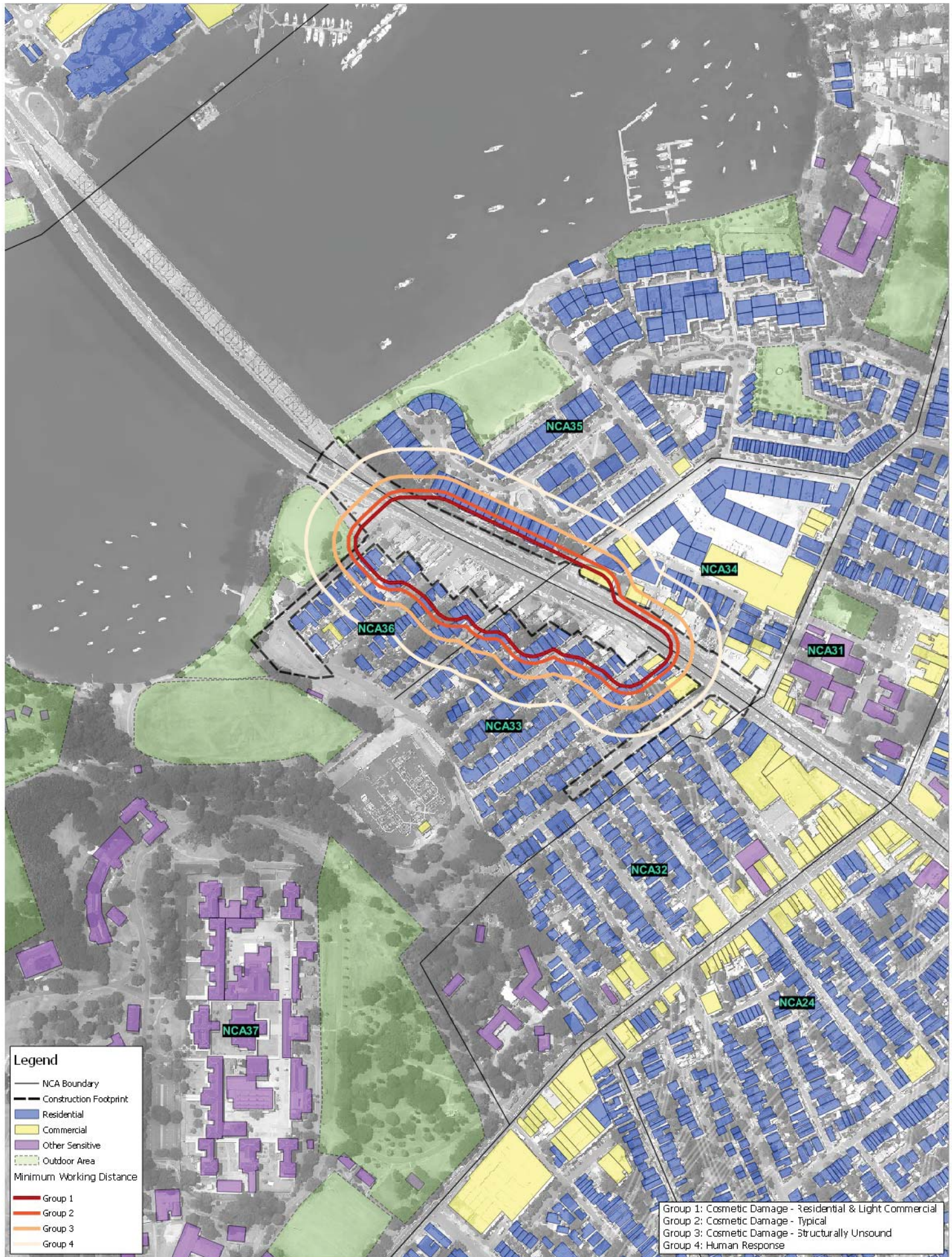


Sydney Motorway Corporation

WestConnex M4-M5 Link

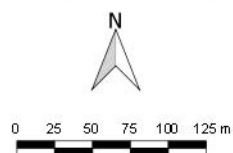
**Darley Road - Sensitive Receivers  
 Minimum Working Distance  
 Large Rock-breaker**





2 LINCOLN STREET  
 LANE COVE  
 NSW 2066  
 AUSTRALIA  
 T: +61 2 9427 8100  
 www.slrconsulting.com

Project No.: 510.16185  
 Date: 31/07/2017  
 Drawn by: JR  
 Scale: 1:5,000  
 Sheet Size: @ A4  
 Projection: GDA 1994 MGA Zone 56



Sydney Motorway Corporation

WestConnex M4-M5 Link

**Iron Cove - Sensitive Receivers  
 Minimum Working Distance  
 Large Rock-breaker**

The content contained within this document may be based on third party data. SLR Consulting Australia Pty Ltd does not guarantee the accuracy of such information.





2 LINCOLN STREET  
 LANE COVE  
 NSW 2066  
 AUSTRALIA  
 T: +61 2 9427 8100  
 www.slrconsulting.com

Project No.: 510.16185  
 Date: 31/07/2017  
 Drawn by: JR  
 Scale: 1:5,000  
 Sheet Size: @ A4  
 Projection: GDA 1994 MGA Zone 56



0 25 50 75 100 125 m

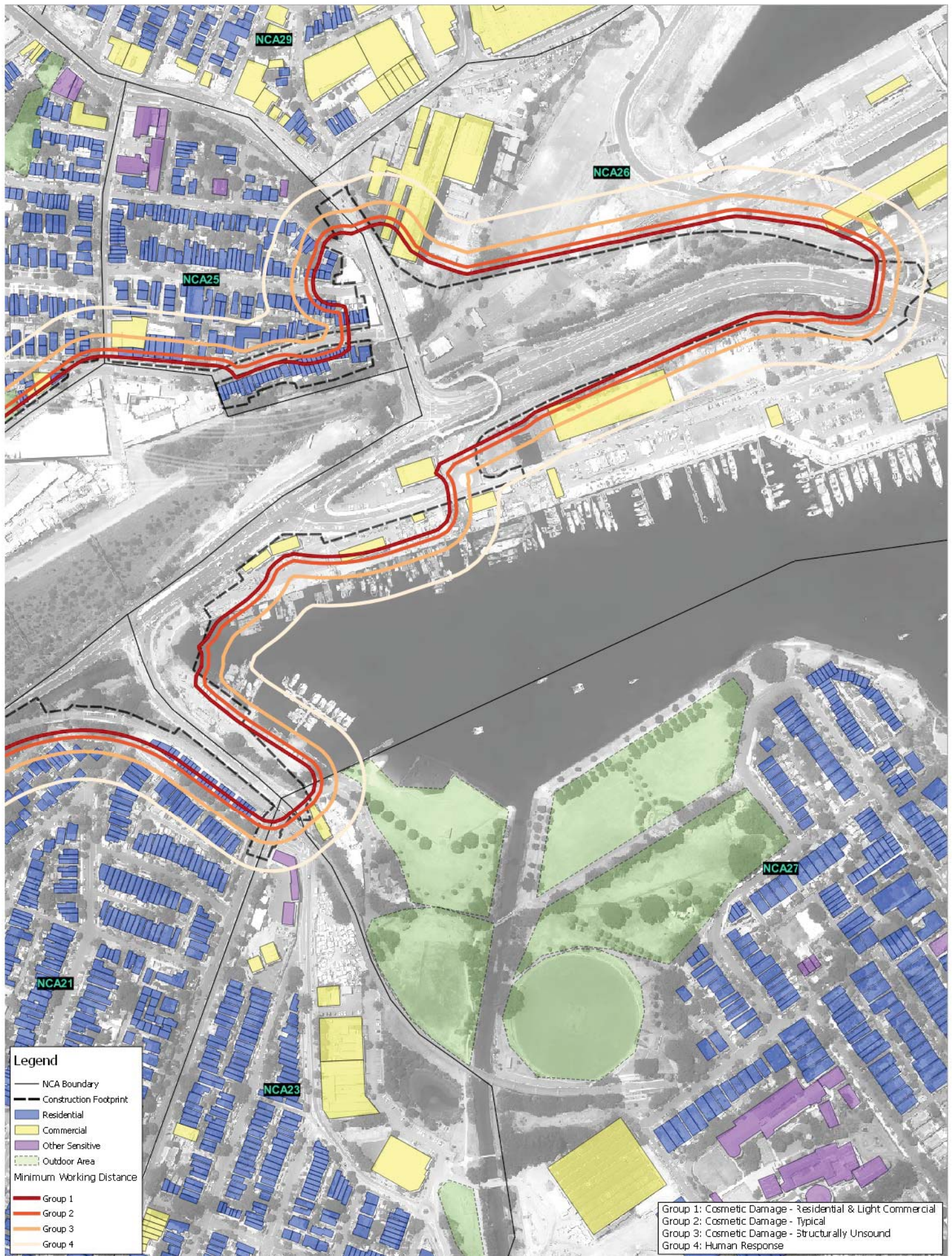
Sydney Motorway Corporation

WestConnex M4-M5 Link

**Rozelle - Sensitive Receivers  
 Minimum Working Distance  
 Large Rock-breaker**

The content contained within this document may be based on third party data.  
 SLR Consulting Australia Pty Ltd does not guarantee the accuracy of such information.





2 LINCOLN STREET  
 LANE COVE  
 NSW 2066  
 AUSTRALIA  
 T: +61 2 9427 8100  
 www.slrconsulting.com

Project No.: 510.16185  
 Date: 31/07/2017  
 Drawn by: JR  
 Scale: 1:5,000  
 Sheet Size: @ A4  
 Projection: GDA 1994 MGA Zone 56



0 25 50 75 100 125 m

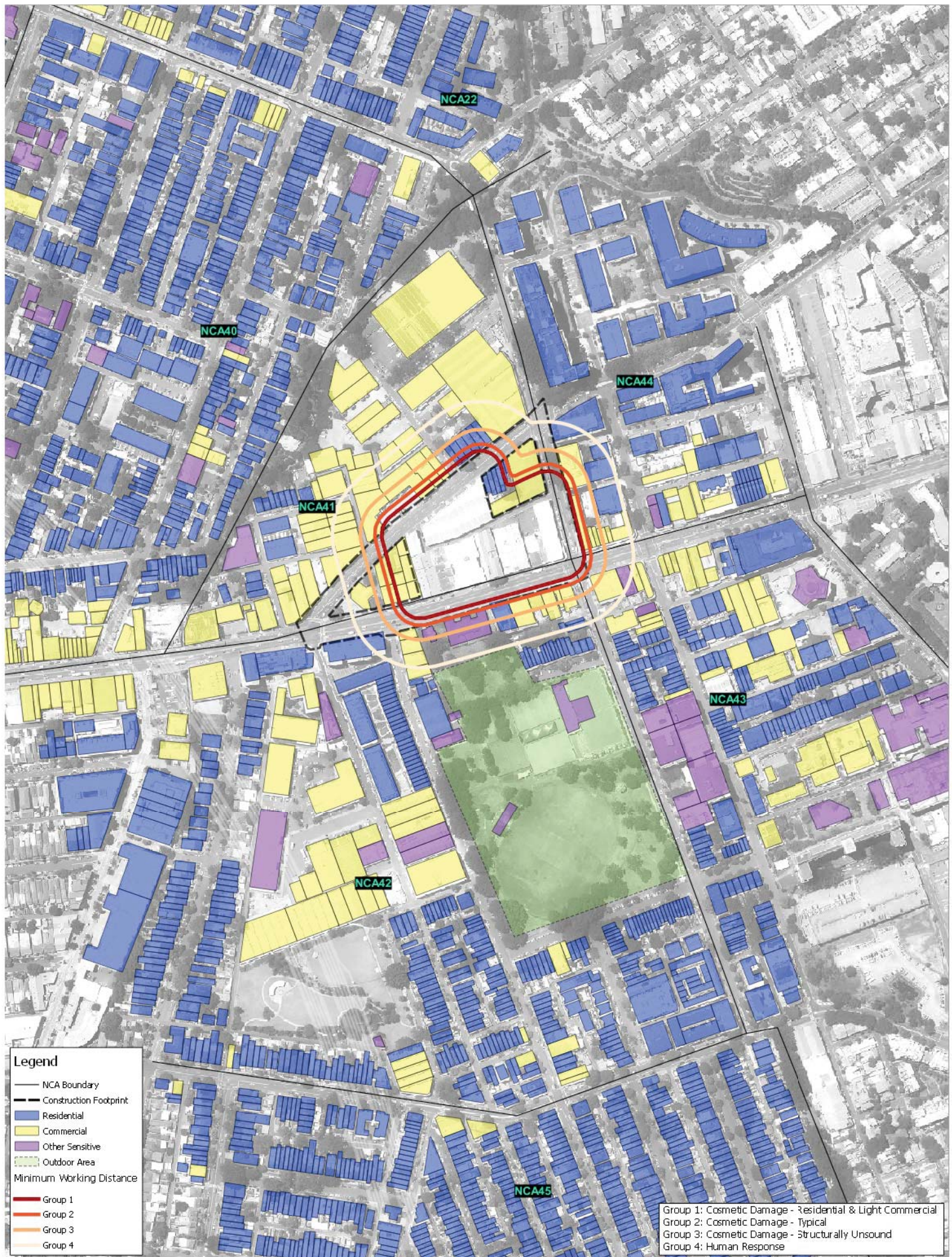
Sydney Motorway Corporation

WestConnex M4-M5 Link

**Rozelle - Sensitive Receivers**  
**Minimum Working Distance**  
**Large Rock-breaker**

The content contained within this document may be based on third party data.  
 SLR Consulting Australia Pty Ltd does not guarantee the accuracy of such information.

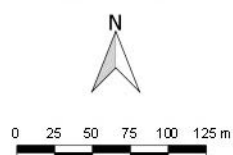




2 LINCOLN STREET  
 LANE COVE  
 NSW 2066  
 AUSTRALIA  
 T: +61 2 9427 8100  
 www.slrconsulting.com

The content contained within this document may be based on third party data.  
 SLR Consulting Australia Pty Ltd does not guarantee the accuracy of such information.

Project No.:	510.16185
Date:	31/07/2017
Drawn by:	JR
Scale:	1:5,000
Sheet Size:	@ A4
Projection:	GDA 1994 MGA Zone 56

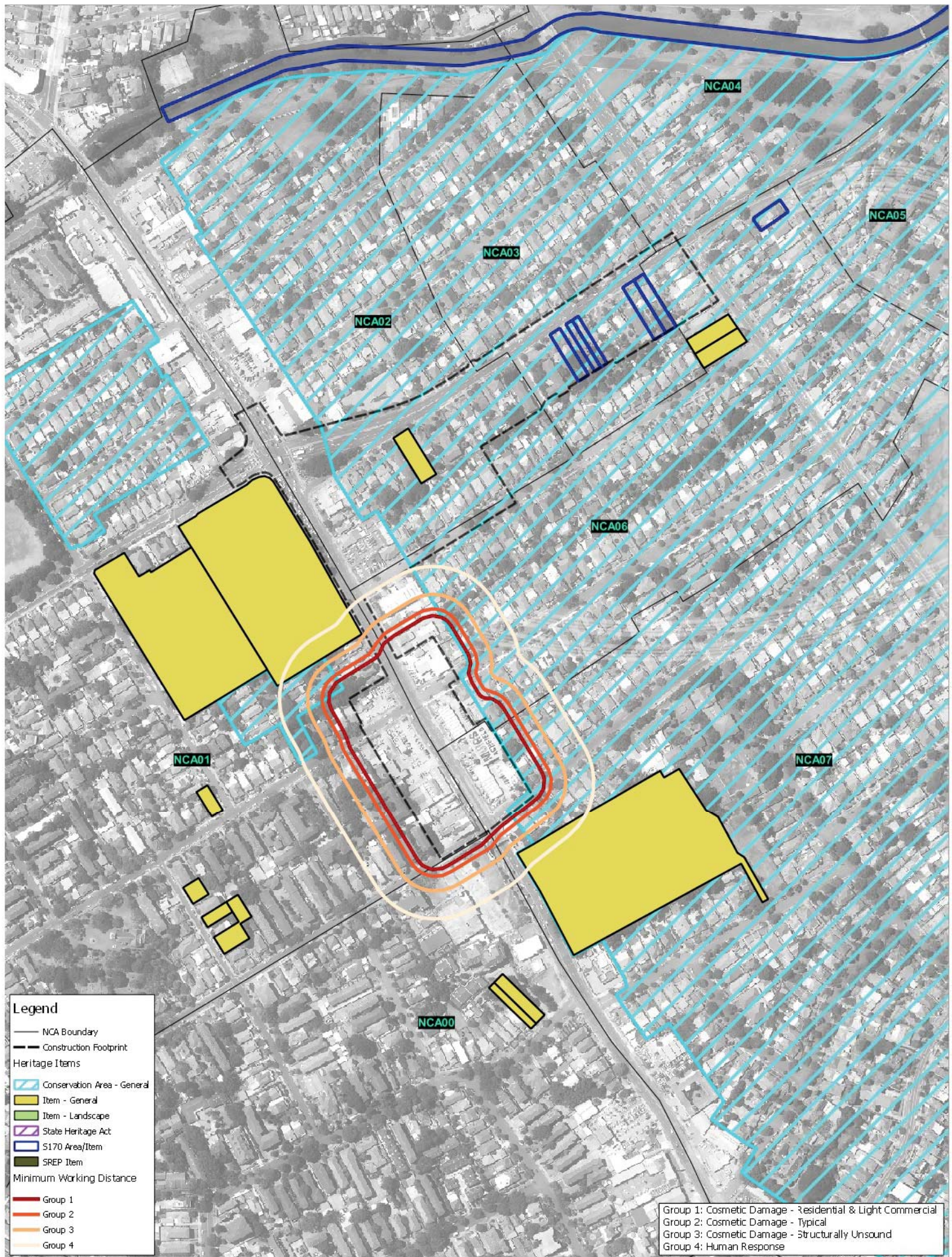


Sydney Motorway Corporation

WestConnex M4-M5 Link

**Pyrmont Bridge Road - Sensitive Receivers  
 Minimum Working Distance  
 Large Rock-breaker**

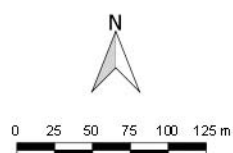




2 LINCOLN STREET  
LANE COVE  
NSW 2066  
AUSTRALIA  
T: +61 2 9427 8100  
www.slrconsulting.com

The content contained within this document may be based on third party data.  
SLR Consulting Australia Pty Ltd does not guarantee the accuracy of such information.

Project No.: 510.16185  
Date: 31/07/2017  
Drawn by: JR  
Scale: 1:5,000  
Sheet Size: @ A4  
Projection: GDA 1994 MGA Zone 56

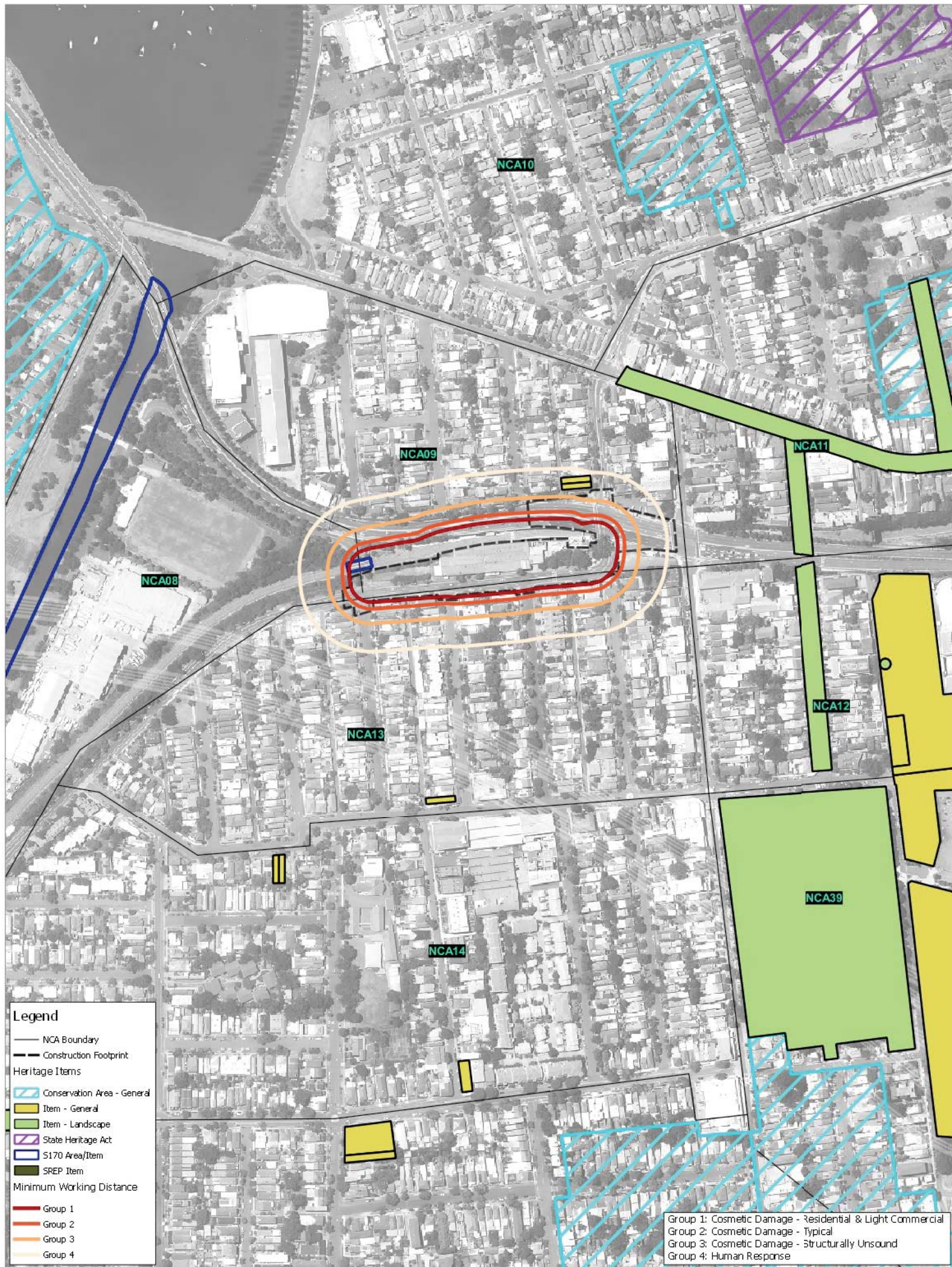


Sydney Motorway Corporation

WestConnex M4-M5 Link

**Haberfield - Heritage Items  
Minimum Working Distance  
Large Rock-breaker**

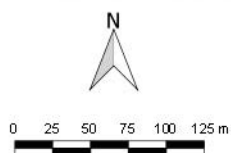




2 LINCOLN STREET  
 LANE COVE  
 NSW 2066  
 AUSTRALIA  
 T: +61 2 9427 8100  
 www.slrconsulting.com

The content contained within this document may be based on third party data.  
 SLR Consulting Australia Pty Ltd does not guarantee the accuracy of such information.

Project No.: 510.16185  
 Date: 31/07/2017  
 Drawn by: JR  
 Scale: 1:5,000  
 Sheet Size: @ A4  
 Projection: GDA 1994 MGA Zone 56

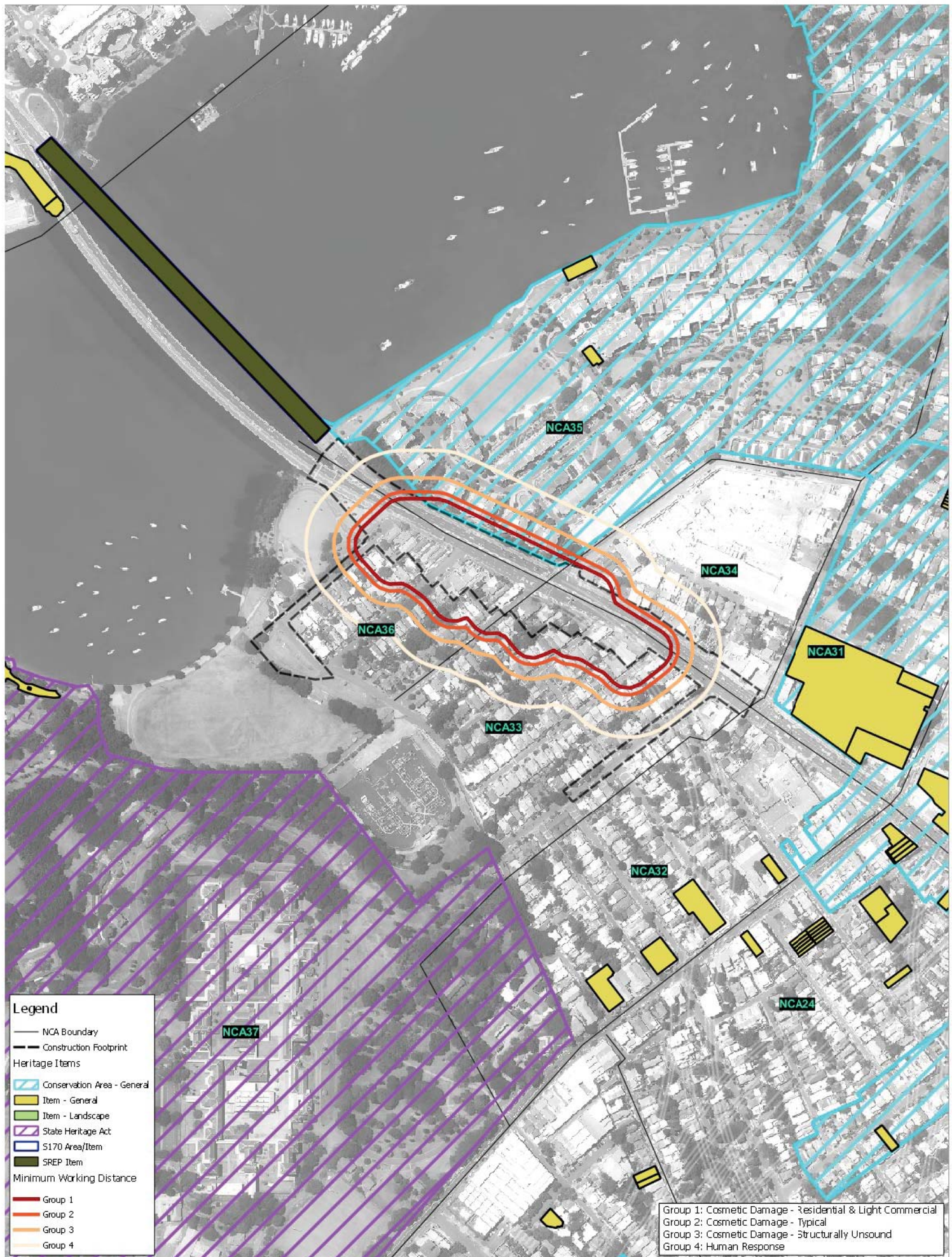


Sydney Motorway Corporation

WestConnex M4-M5 Link

**Darley Road - Heritage Items  
 Minimum Working Distance  
 Large Rock-breaker**

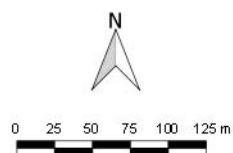




2 LINCOLN STREET  
 LANE COVE  
 NSW 2066  
 AUSTRALIA  
 T: +61 2 9427 8100  
 www.slrconsulting.com

The content contained within this document may be based on third party data. SLR Consulting Australia Pty Ltd does not guarantee the accuracy of such information.

Project No.:	510.16185
Date:	31/07/2017
Drawn by:	JR
Scale:	1:5,000
Sheet Size:	@ A4
Projection:	GDA 1994 MGA Zone 56

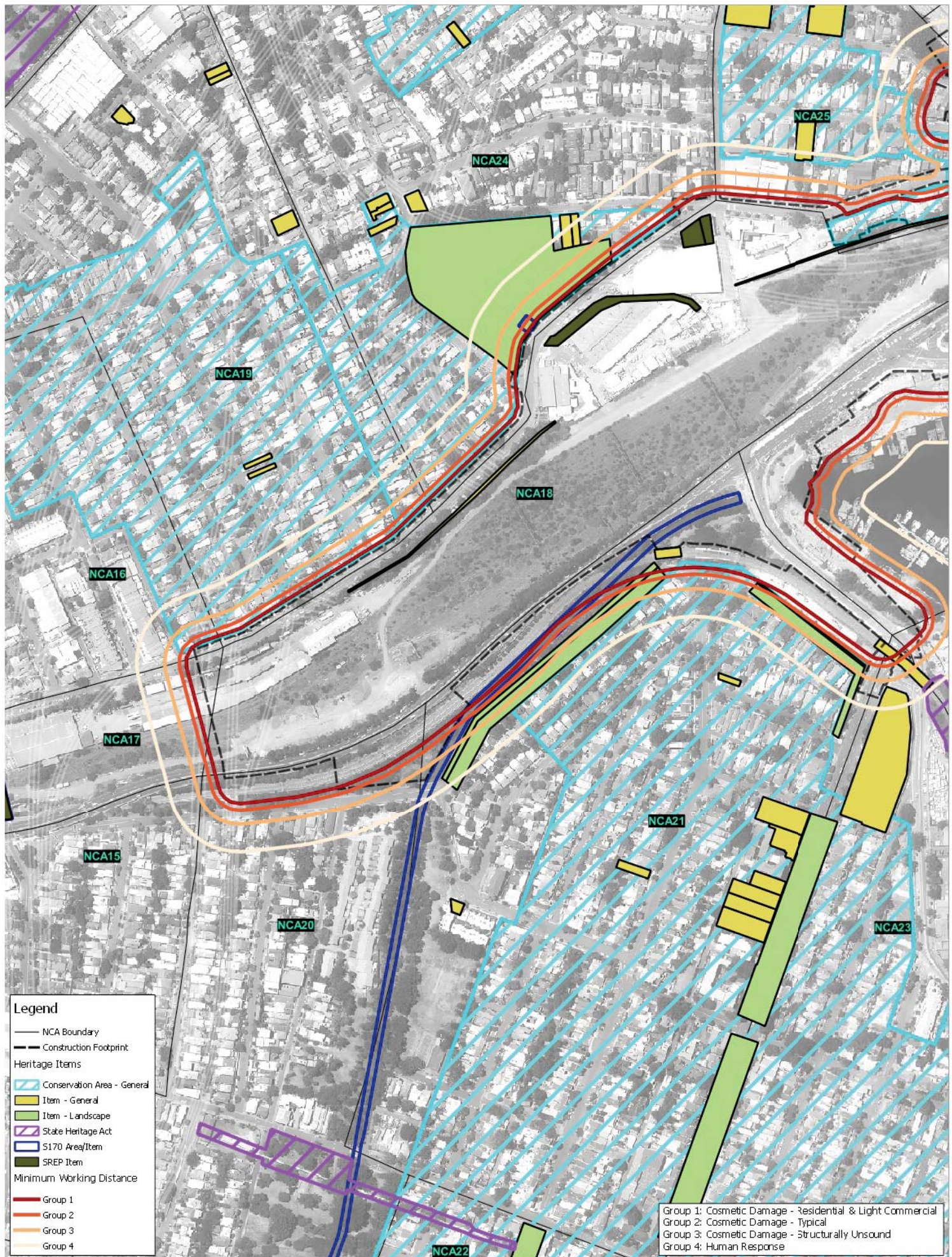


Sydney Motorway Corporation

WestConnex M4-M5 Link

**Iron Cove - Heritage Items  
 Minimum Working Distance  
 Large Rock-breaker**

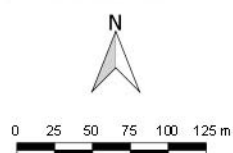




2 LINCOLN STREET  
LANE COVE  
NSW 2066  
AUSTRALIA  
T: +61 2 9427 8100  
www.slrconsulting.com

The content contained within this document may be based on third party data.  
SLR Consulting Australia Pty Ltd does not guarantee the accuracy of such information.

Project No.:	510.16185
Date:	31/07/2017
Drawn by:	JR
Scale:	1:5,000
Sheet Size:	@ A4
Projection:	GDA 1994 MGA Zone 56

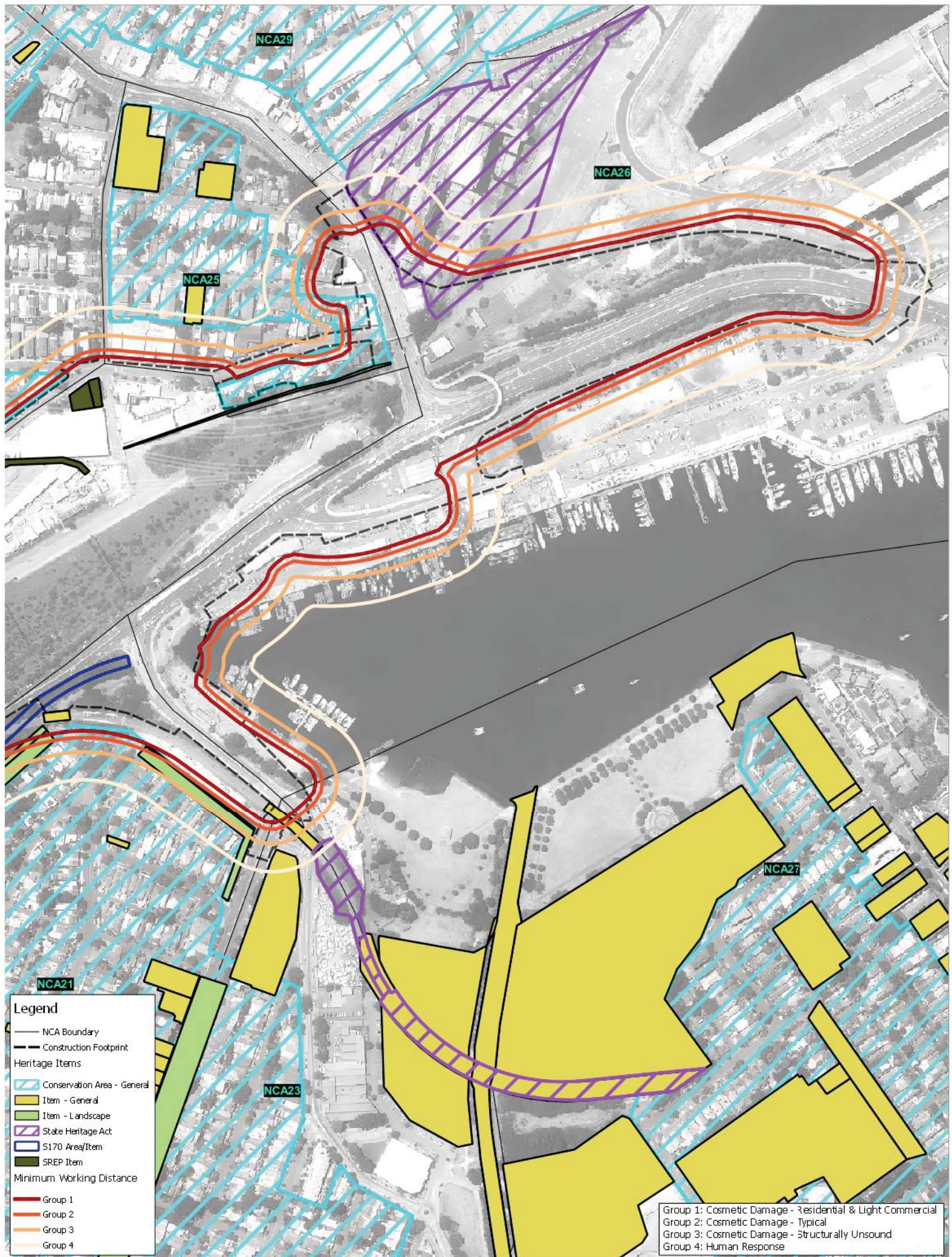


Sydney Motorway Corporation

WestConnex M4-M5 Link

**Rozelle - Heritage Items**  
**Minimum Working Distance**  
**Large Rock-breaker**

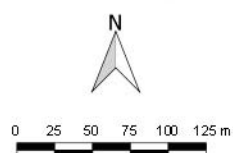




2 LINCOLN STREET  
LANE COVE  
NSW 2066  
AUSTRALIA  
T: +61 2 9427 8100  
www.slrconsulting.com

The content contained within this document may be based on third party data.  
SLR Consulting Australia Pty Ltd does not guarantee the accuracy of such information.

Project No.:	510.16185
Date:	31/07/2017
Drawn by:	JR
Scale:	1:5,000
Sheet Size:	@ A4
Projection:	SDA 1994 MGA Zone 56

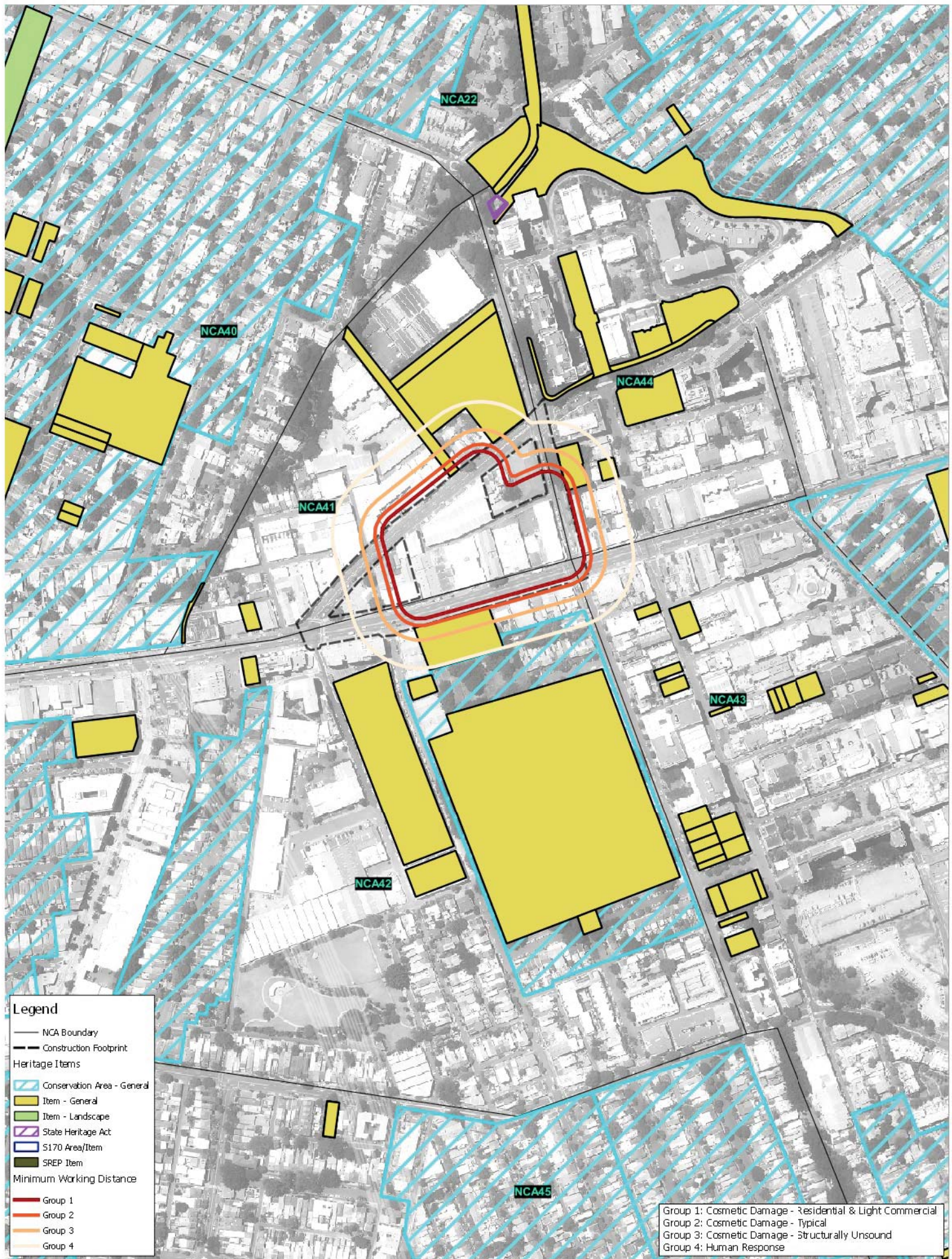


Sydney Motorway Corporation

WestConnex M4-M5 Link

**Rozelle - Heritage Items**  
**Minimum Working Distance**  
**Large Rock-breaker**





# Legend

- NCA Boundary
- Construction Footprint
- Heritage Items
  - Conservation Area - General
  - Item - General
  - Item - Landscape
  - State Heritage Act
  - S170 Area/Item
  - SREP Item
- Minimum Working Distance
  - Group 1
  - Group 2
  - Group 3
  - Group 4

Group 1: Cosmetic Damage - Residential & Light Commercial  
Group 2: Cosmetic Damage - Typical  
Group 3: Cosmetic Damage - Structurally Unsound  
Group 4: Human Response



2 LINCOLN STREET  
LANE COVE  
NSW 2066  
AUSTRALIA  
T: +61 2 9427 8100  
www.slrconsulting.com

Project No.: 510.16185  
Date: 31/07/2017  
Drawn by: JR  
Scale: 1:5,000  
Sheet Size: @ A4  
Projection: GDA 1994 MGA Zone 56



0 25 50 75 100 125 m

Sydney Motorway Corporation

WestConnex M4-M5 Link

Pyrmont Bridge Road - Heritage Items  
Minimum Working Distance  
Large Rock-breaker

The content contained within this document may be based on third party data.  
SLR Consulting Australia Pty Ltd does not guarantee the accuracy of such information.

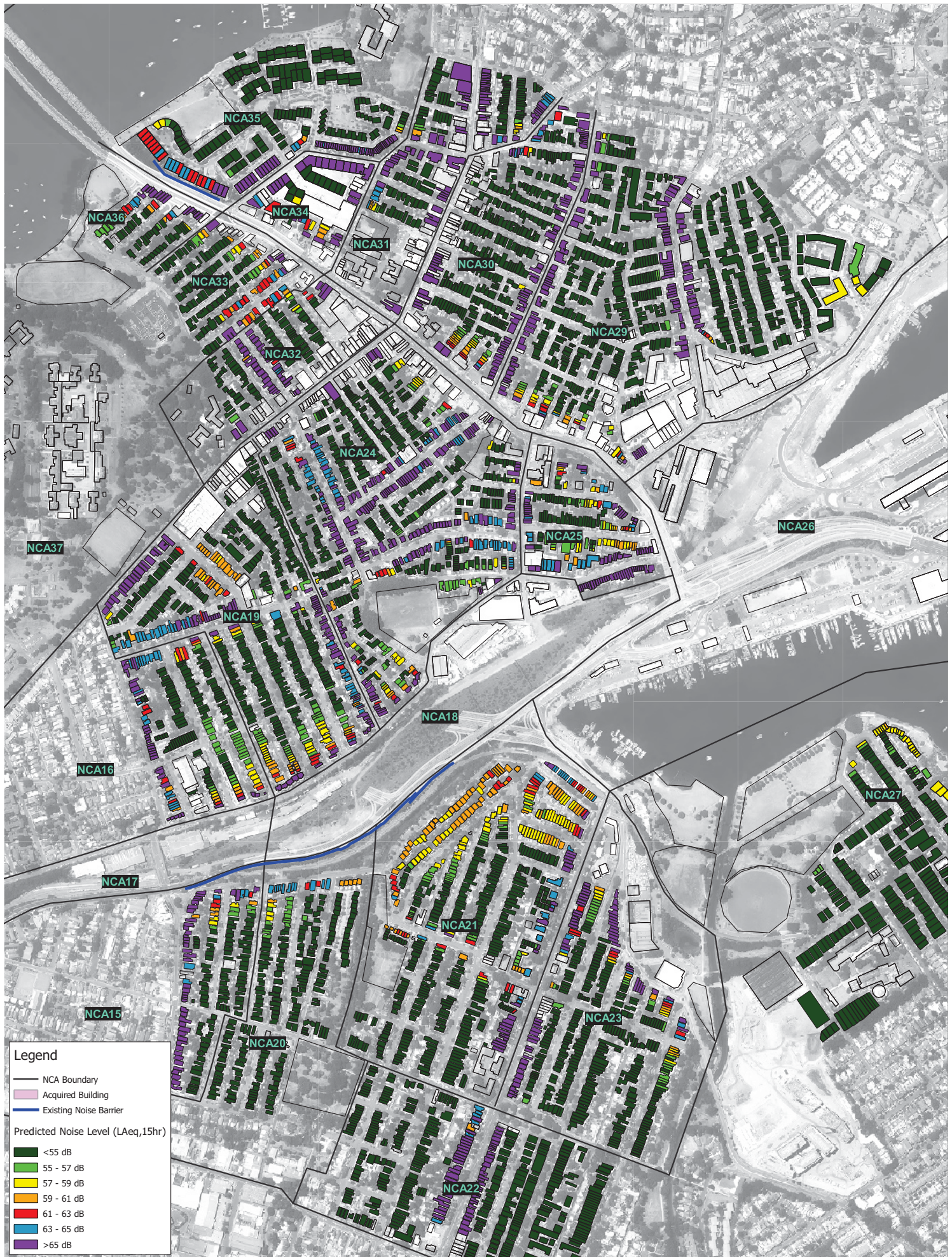


# Annexure K

## Operational road traffic noise prediction maps – No Build

---

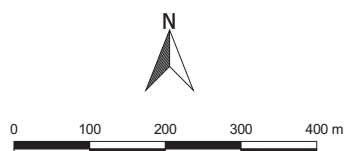




2 LINCOLN STREET  
LANE COVE  
NSW 2066  
AUSTRALIA  
T: +61 2 9427 8100  
www.slrconsulting.com

The content contained within this document may be based on third party data.  
SLR Consulting Australia Pty Ltd does not guarantee the accuracy of such information.

Project No.: 610.16185  
Date: 16/05/2017  
Drawn by: ALW  
Scale: 1:10,000  
Sheet Size: @ A4  
Projection: GDA 1994 MGA Zone 56

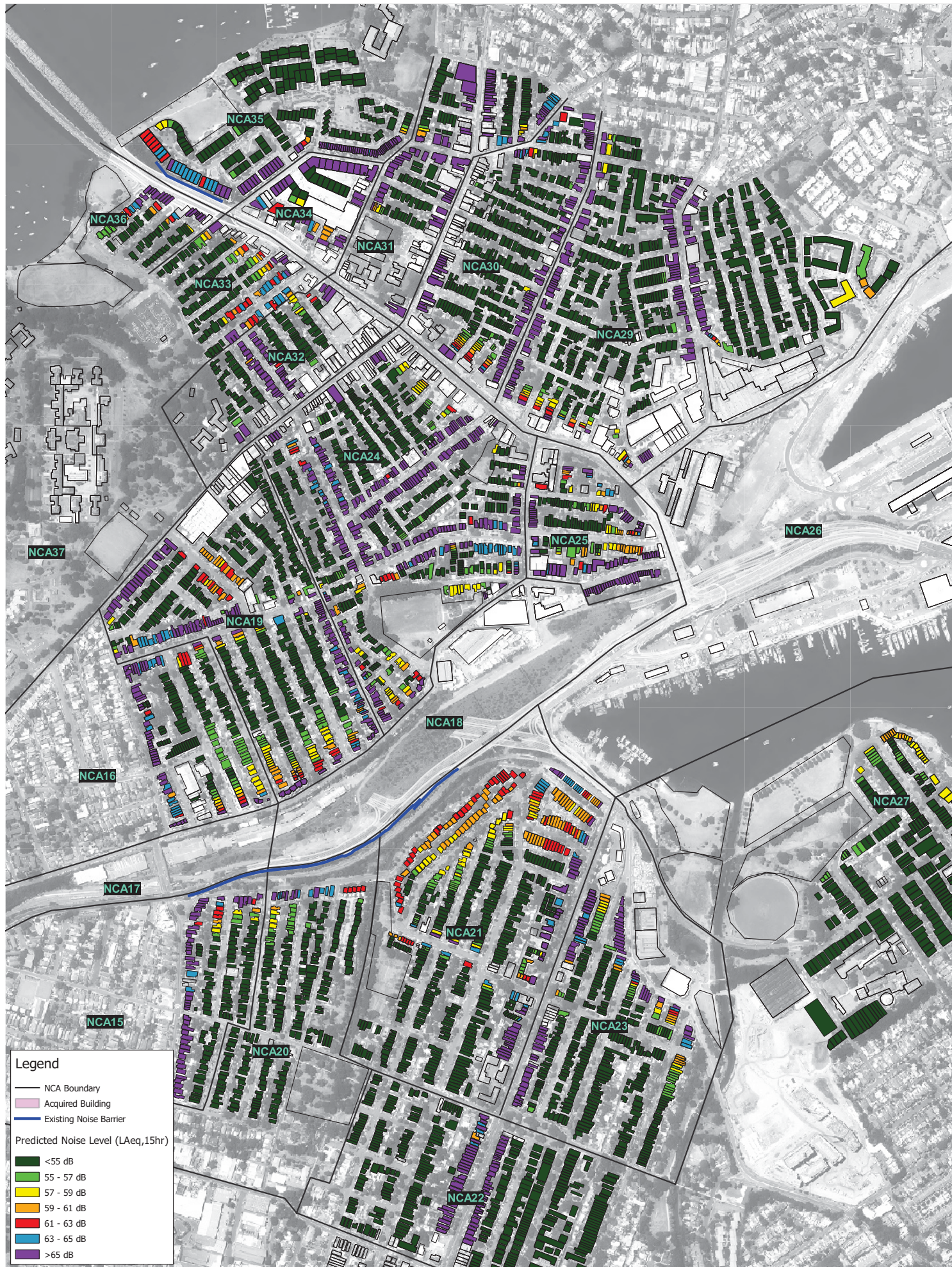


Sydney Motorway Corporation

WestConnex M4-M5 Link

**Residential Noise Predictions  
Ground Floor, 2023 - Daytime  
No Build**

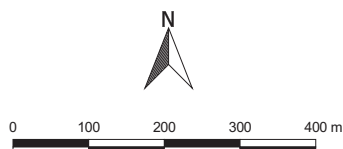




2 LINCOLN STREET  
LANE COVE  
NSW 2066  
AUSTRALIA  
T: +61 2 9427 8100  
www.slrconsulting.com

The content contained within this document may be based on third party data.  
SLR Consulting Australia Pty Ltd does not guarantee the accuracy of such information.

Project No.: 610.16185  
Date: 16/05/2017  
Drawn by: ALW  
Scale: 1:10,000  
Sheet Size: @ A4  
Projection: GDA 1994 MGA Zone 56

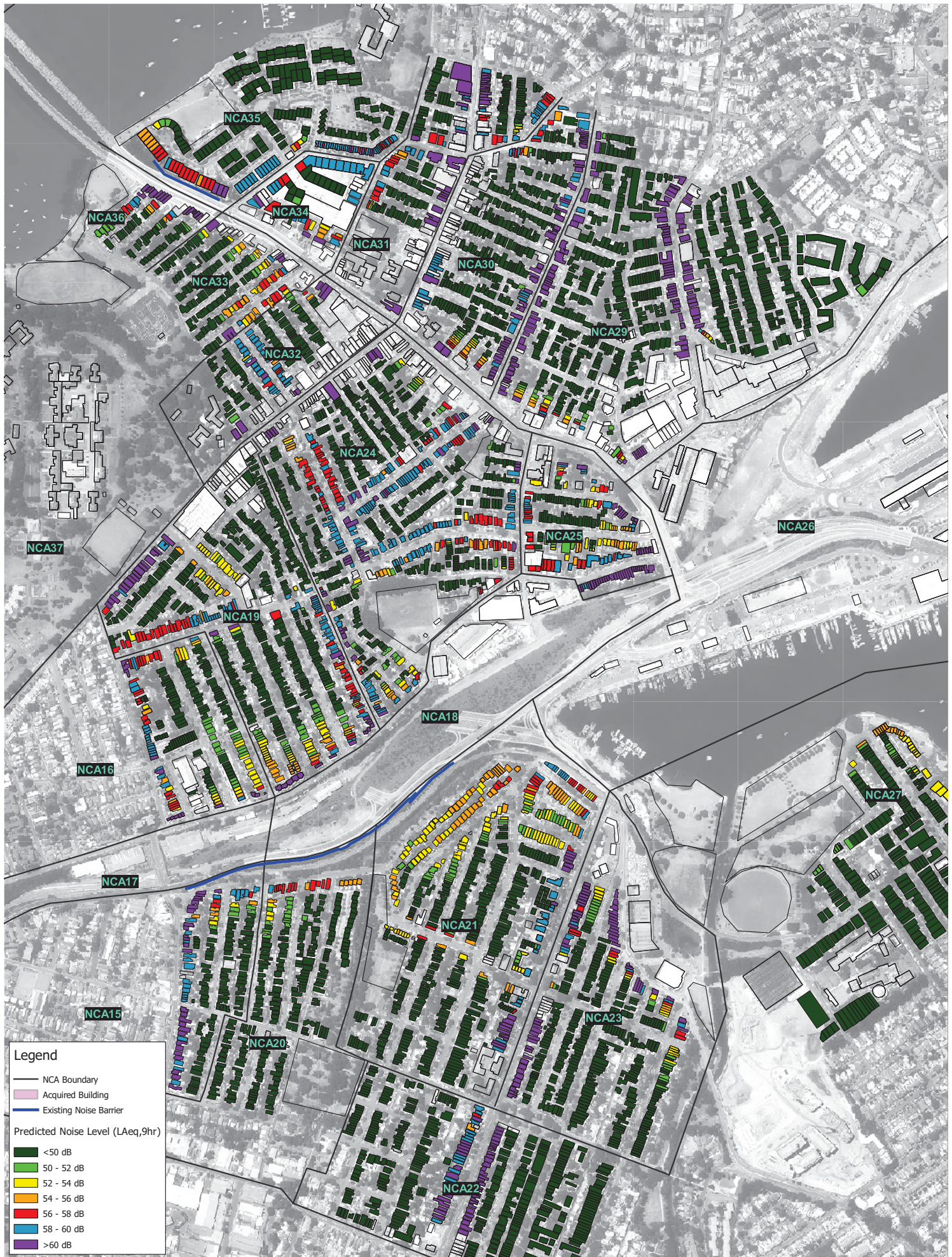


Sydney Motorway Corporation

WestConnex M4-M5 Link

**Residential Noise Predictions  
Ground Floor, 2033 - Daytime  
No Build**

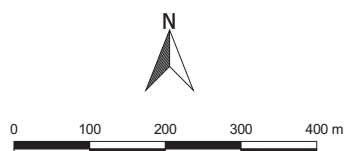




2 LINCOLN STREET  
LANE COVE  
NSW 2066  
AUSTRALIA  
T: +61 2 9427 8100  
www.slrconsulting.com

The content contained within this document may be based on third party data.  
SLR Consulting Australia Pty Ltd does not guarantee the accuracy of such information.

Project No.: 610.16185  
Date: 16/05/2017  
Drawn by: ALW  
Scale: 1:10,000  
Sheet Size: @ A4  
Projection: GDA 1994 MGA Zone 56

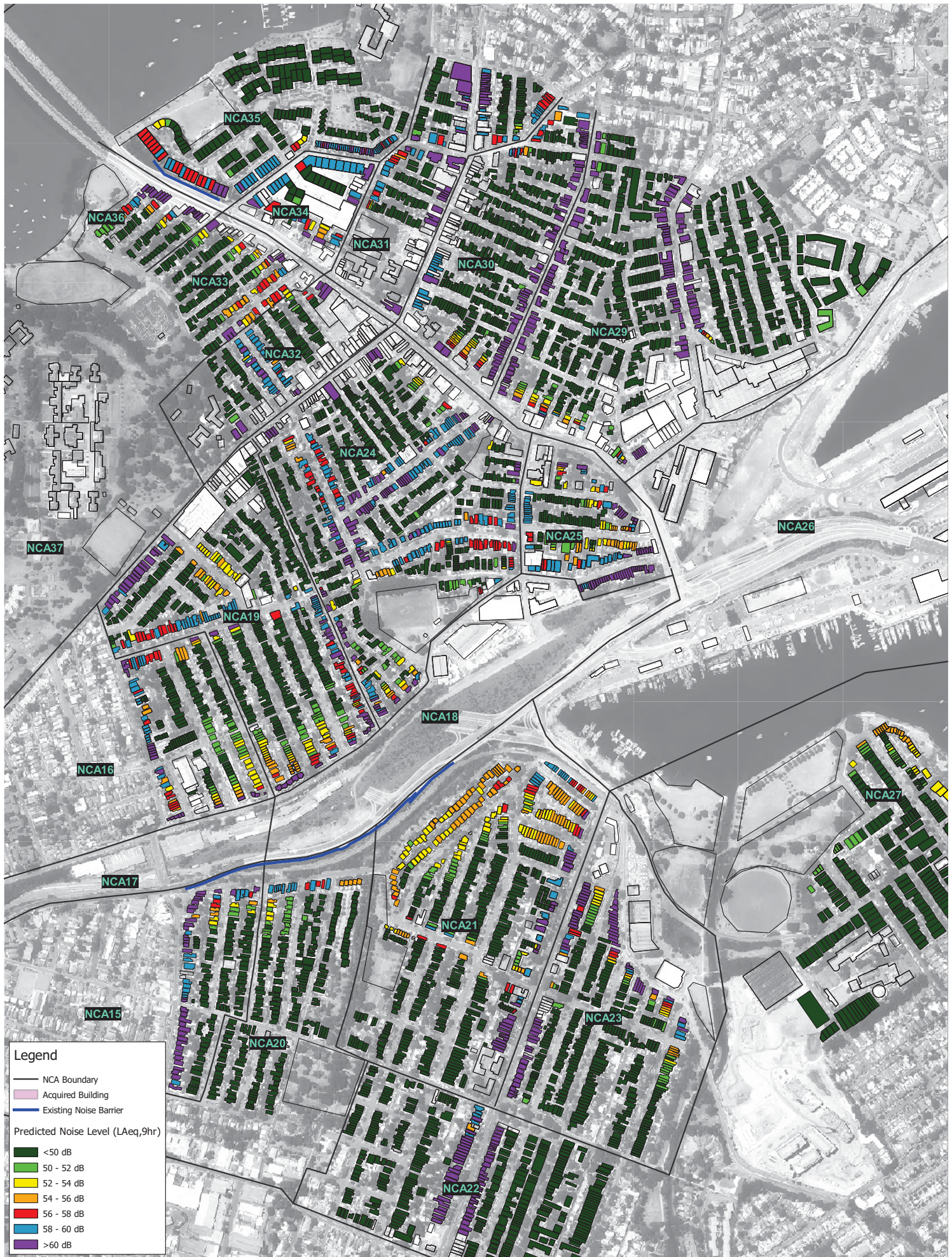


Sydney Motorway Corporation

WestConnex M4-M5 Link

**Residential Noise Predictions**  
**Ground Floor, 2023 - Night-time**  
**No Build**

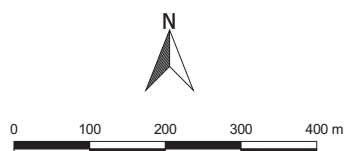




2 LINCOLN STREET  
LANE COVE  
NSW 2066  
AUSTRALIA  
T: +61 2 9427 8100  
www.slrconsulting.com

The content contained within this document may be based on third party data.  
SLR Consulting Australia Pty Ltd does not guarantee the accuracy of such information.

Project No.: 610.16185  
Date: 16/05/2017  
Drawn by: ALW  
Scale: 1:10,000  
Sheet Size: @ A4  
Projection: GDA 1994 MGA Zone 56



Sydney Motorway Corporation

WestConnex M4-M5 Link

**Residential Noise Predictions  
Ground Floor, 2033 - Night-time  
No Build**



# Annexure L

Operational road traffic noise prediction maps – Build (without additional mitigation)

---