

# APPENDIX

# E

## Flood Study Report

### **Attachment C** Design Conditions Flood Impact Maps

- ▶ Flood Level Change (Afflux) 39% AEP: *Figures DE39A1 to DE39A37*
- ▶ Flood Level Change (Afflux) 10% AEP: *Figures DE10A1 to DE10A37*

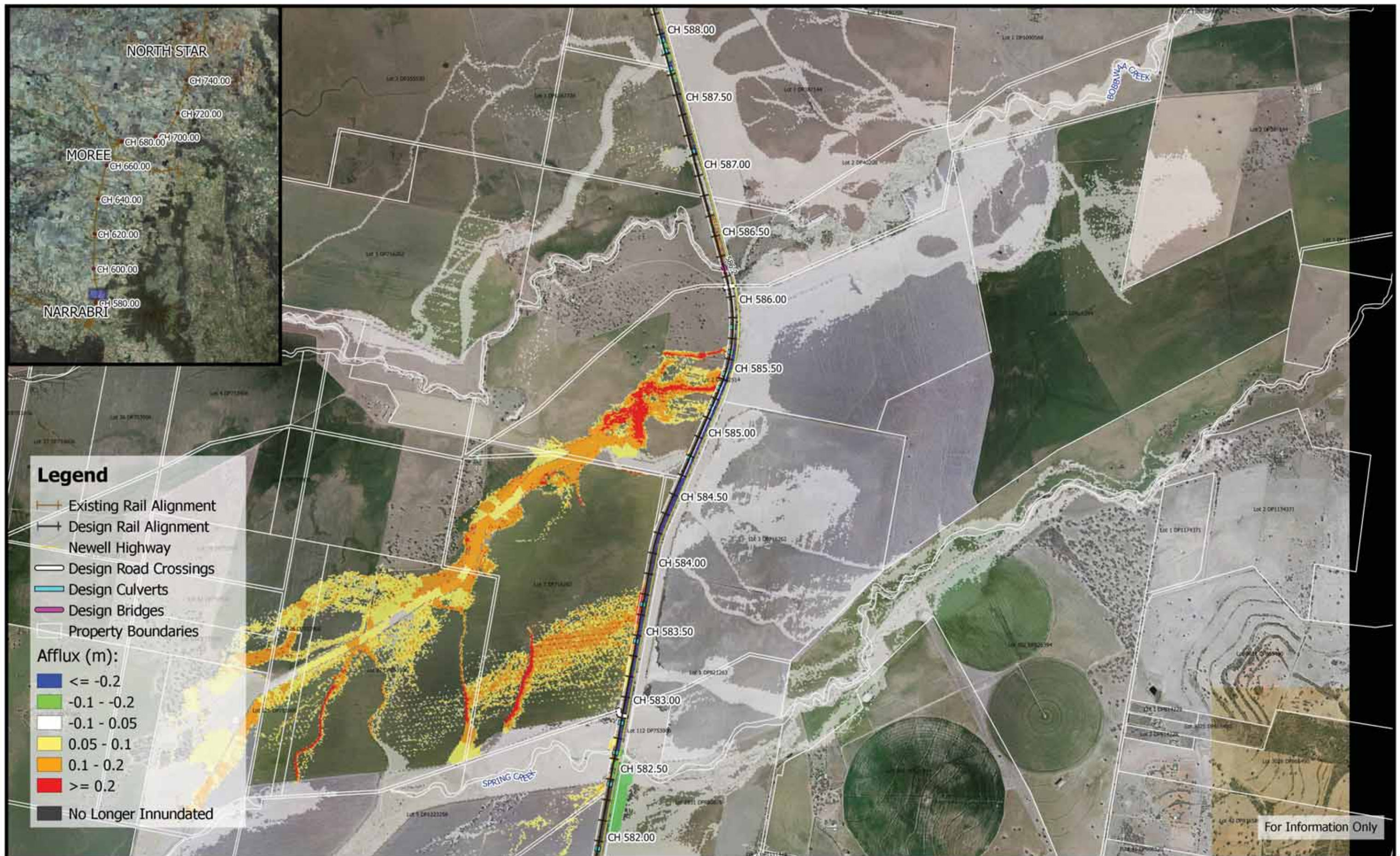












**Inland Rail - Narrabri to North Star**  
IFC - Flood Study for Separable Portion 1

**Figure DE39A3**

**39% AEP Flood Afflux - CH 585.00**





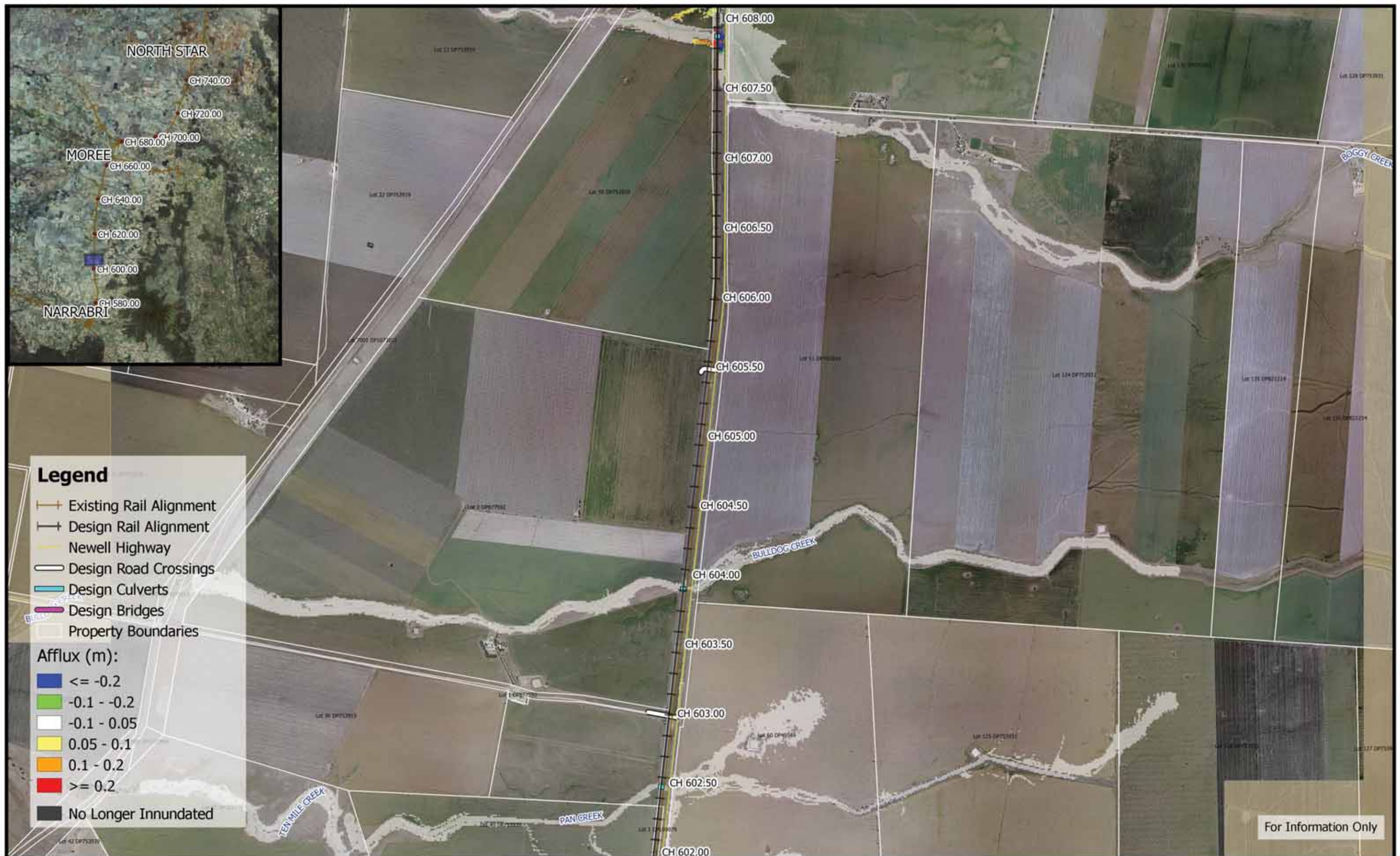
































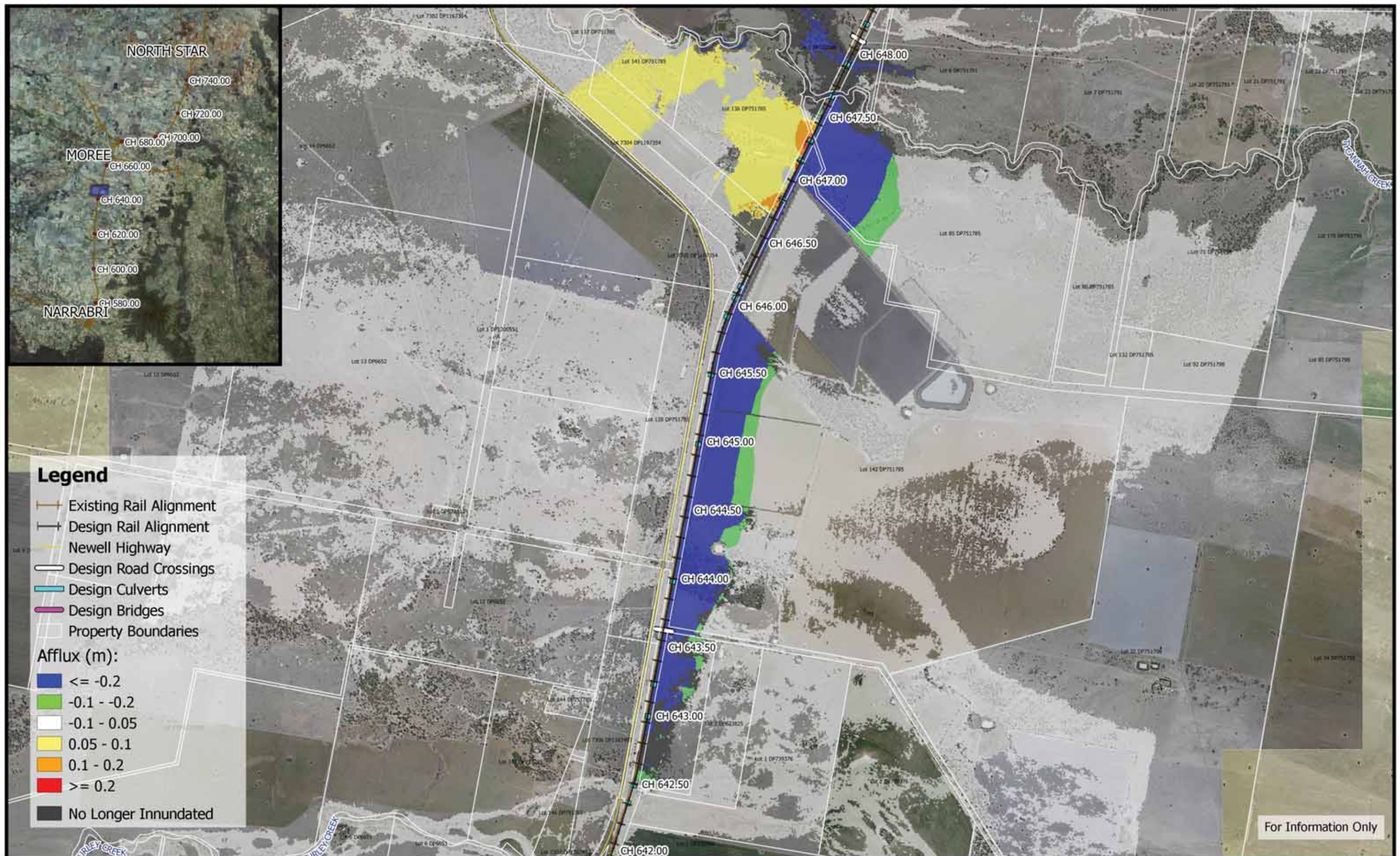




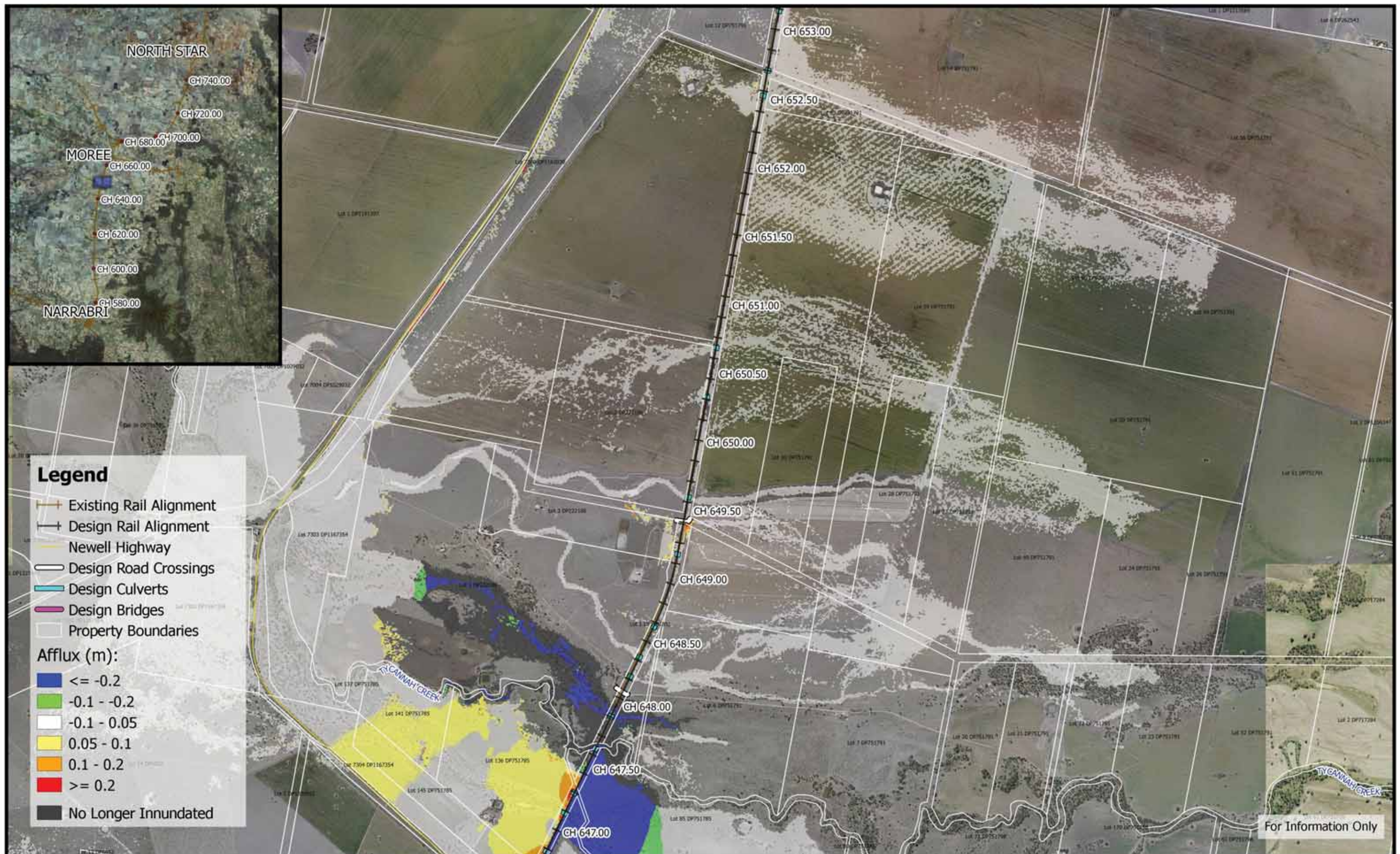












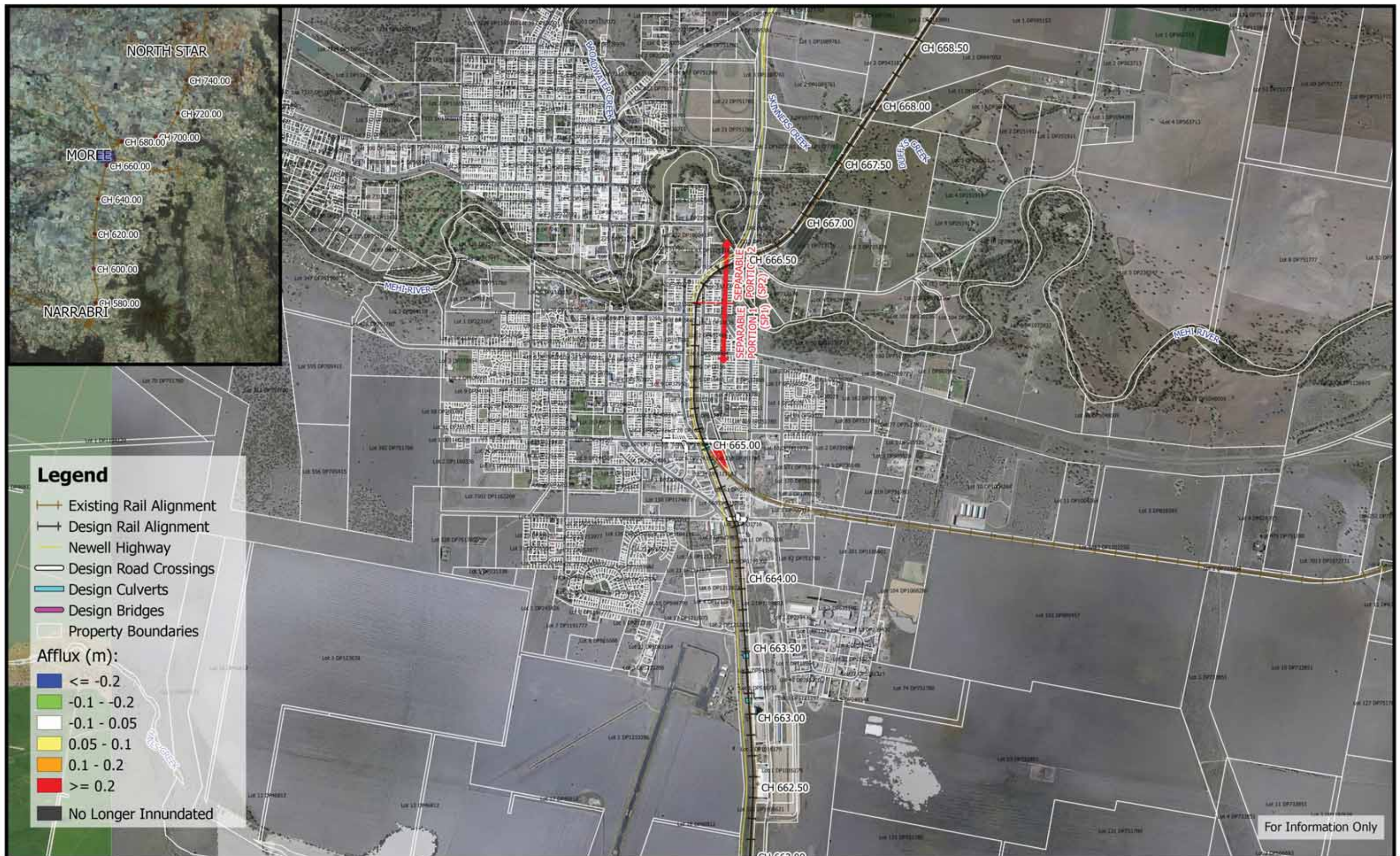




















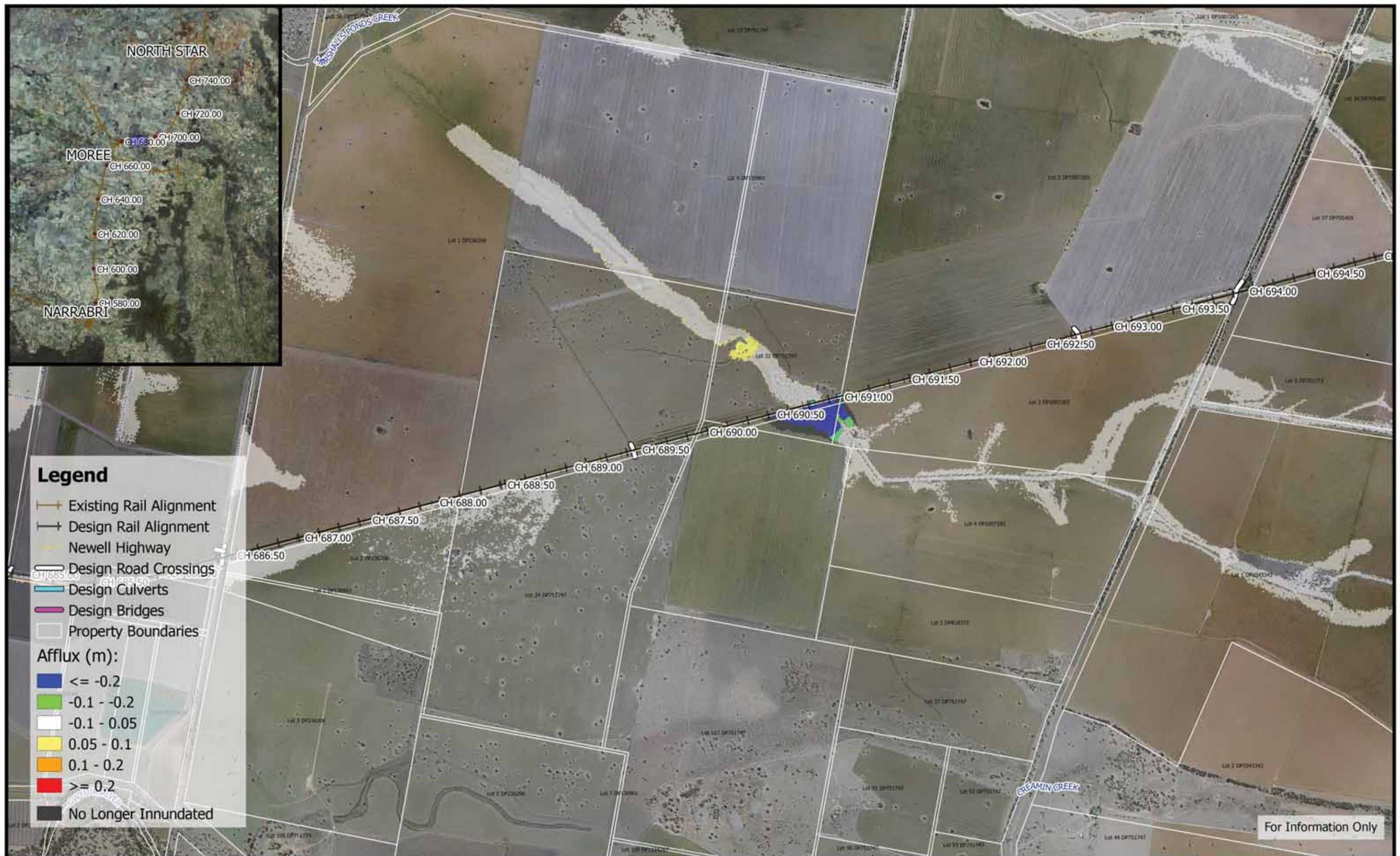
















	<p>250 0 250 500 750 1000 m</p> <p>1:25,000</p> <p>Coordinate system: GDA94 MGA Zone 55 Aerial Source: NSW Six Map Scale ratio correct when printed at A3</p>		Date: 20/5/2019	<p><b>Inland Rail - Narrabri to North Star</b> IFC - Flood Study for Separable Portion 1</p> <p><b>Figure DE39A25</b> 39% AEP Flood Afflux - CH 695.00</p>
			Rev A: For Information Only	
			Prepared By: StephensK	





















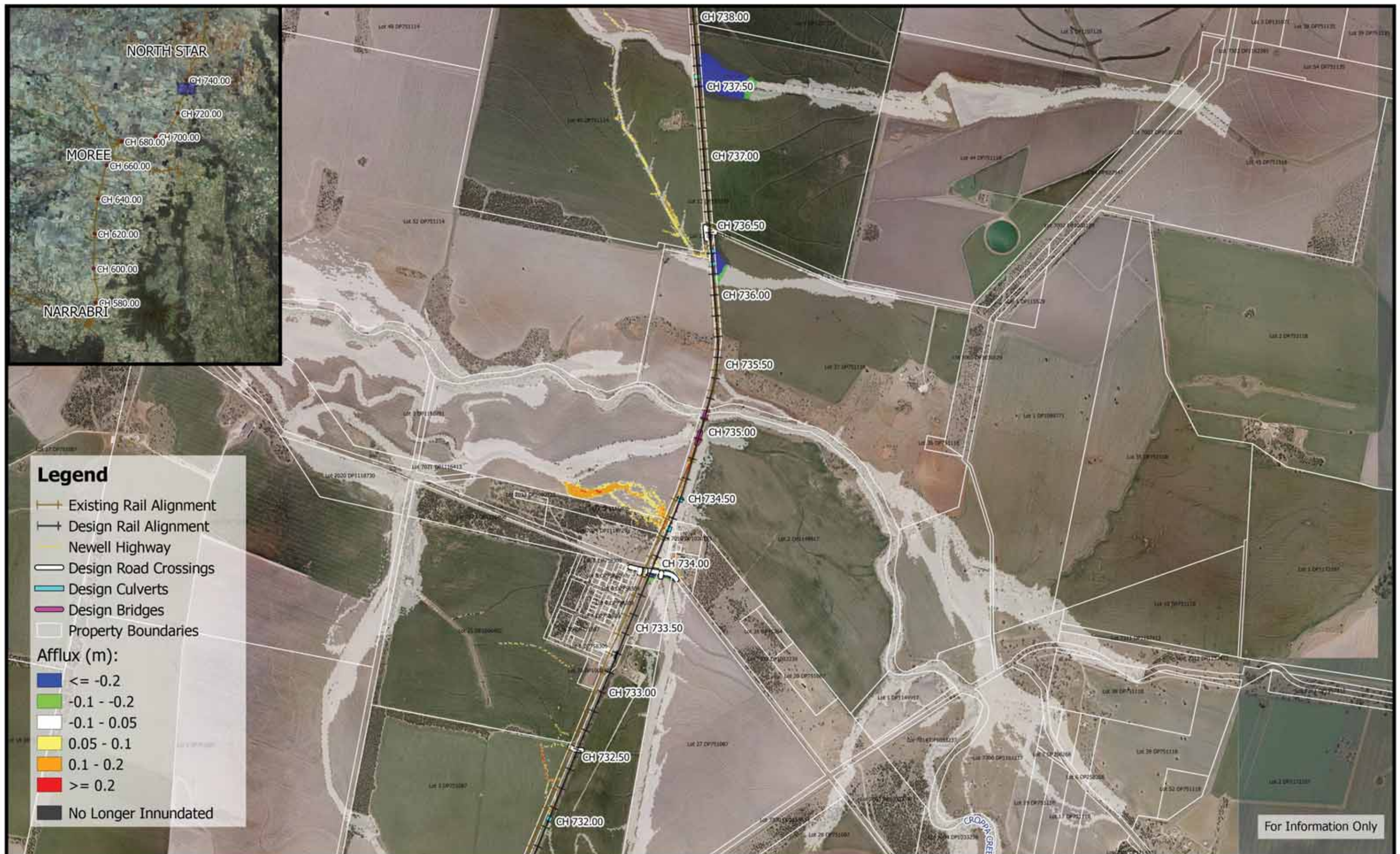




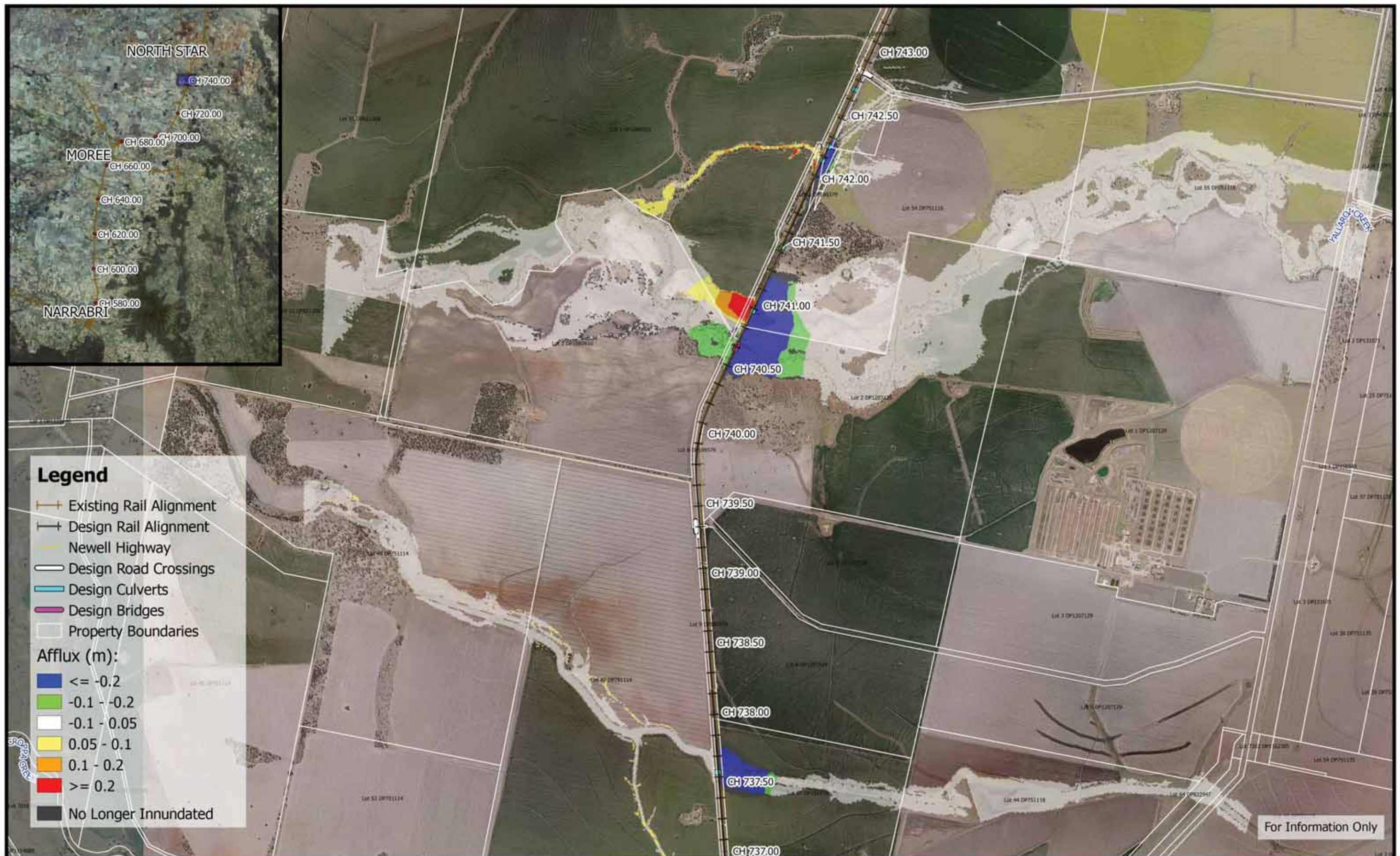








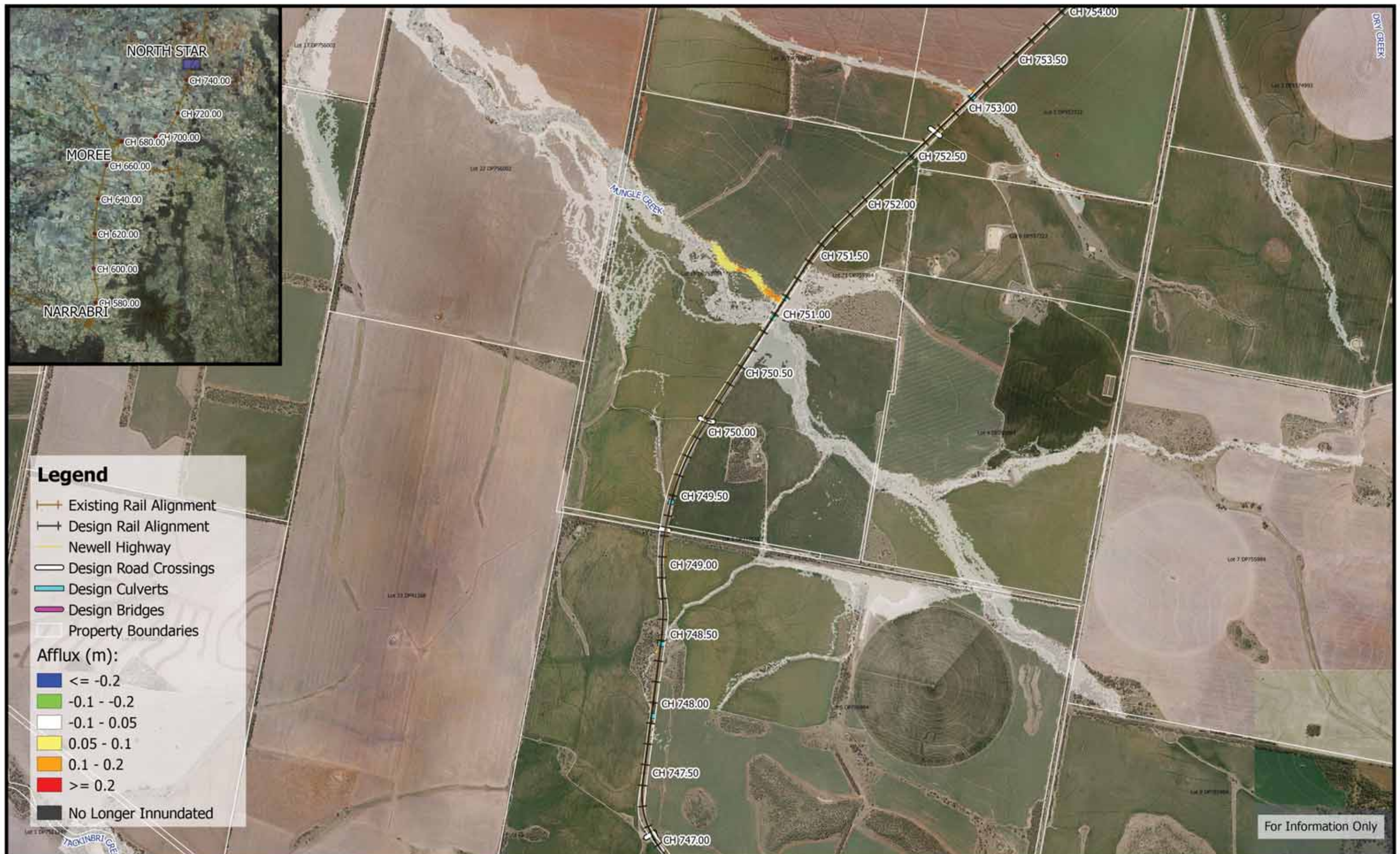




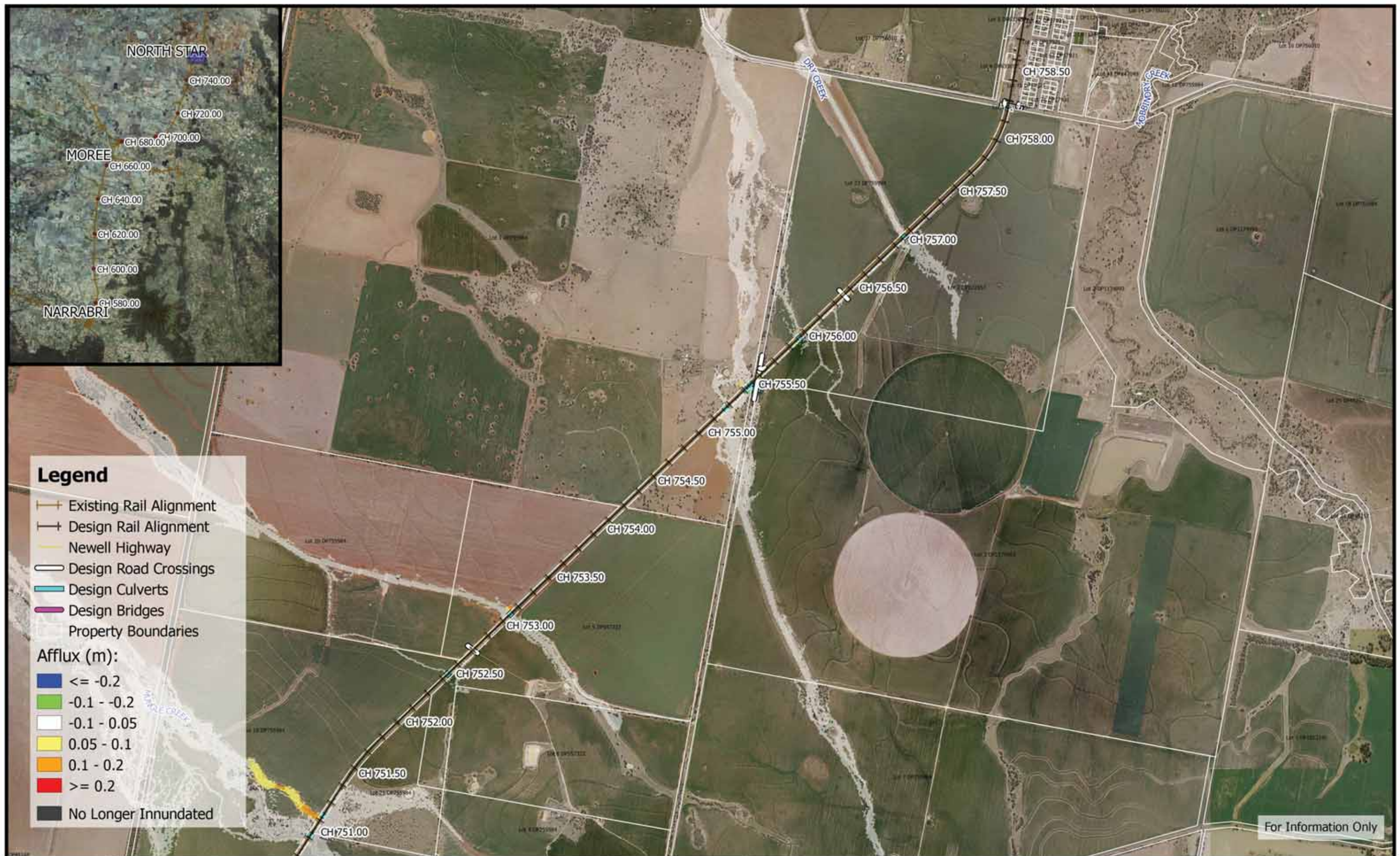




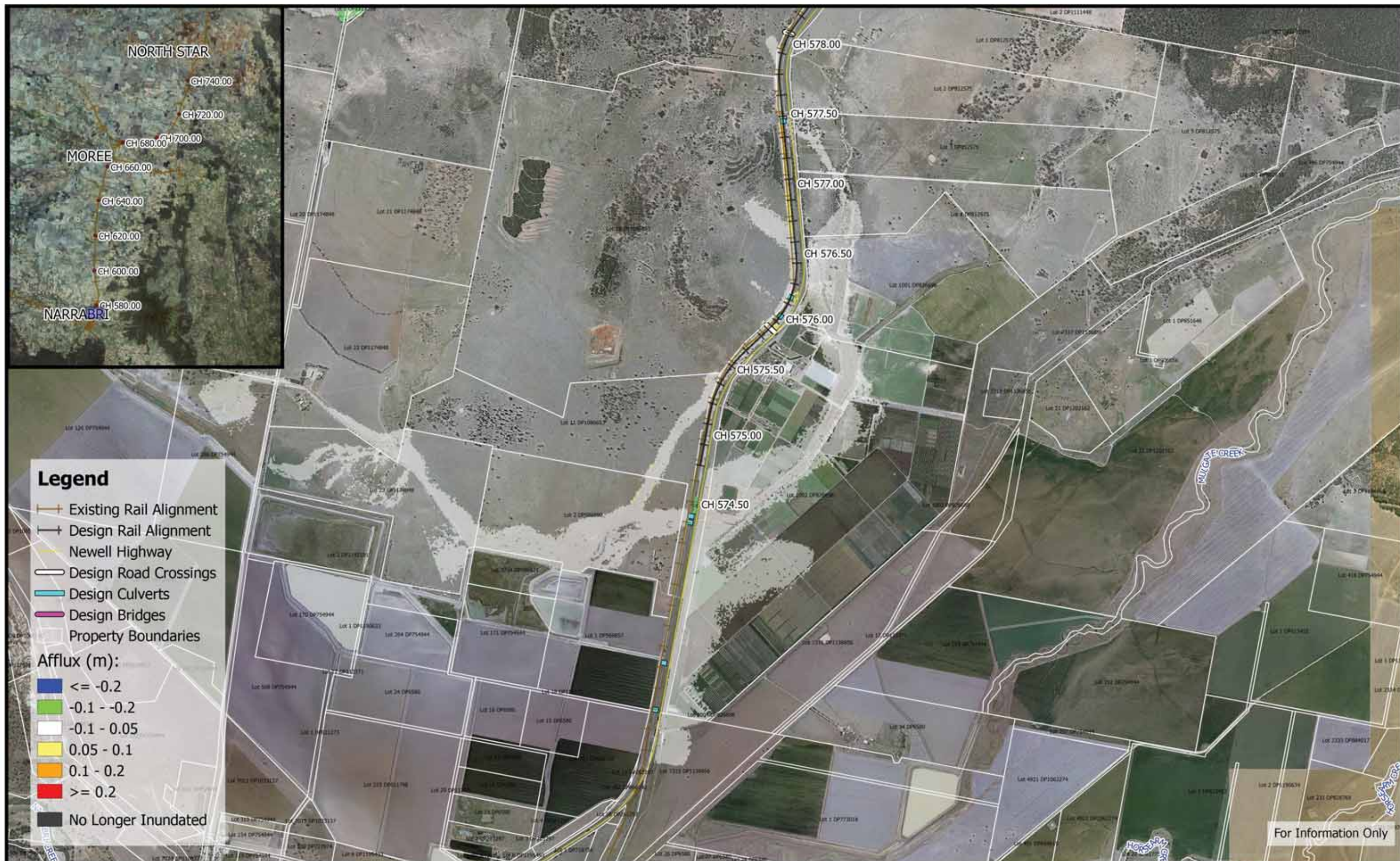




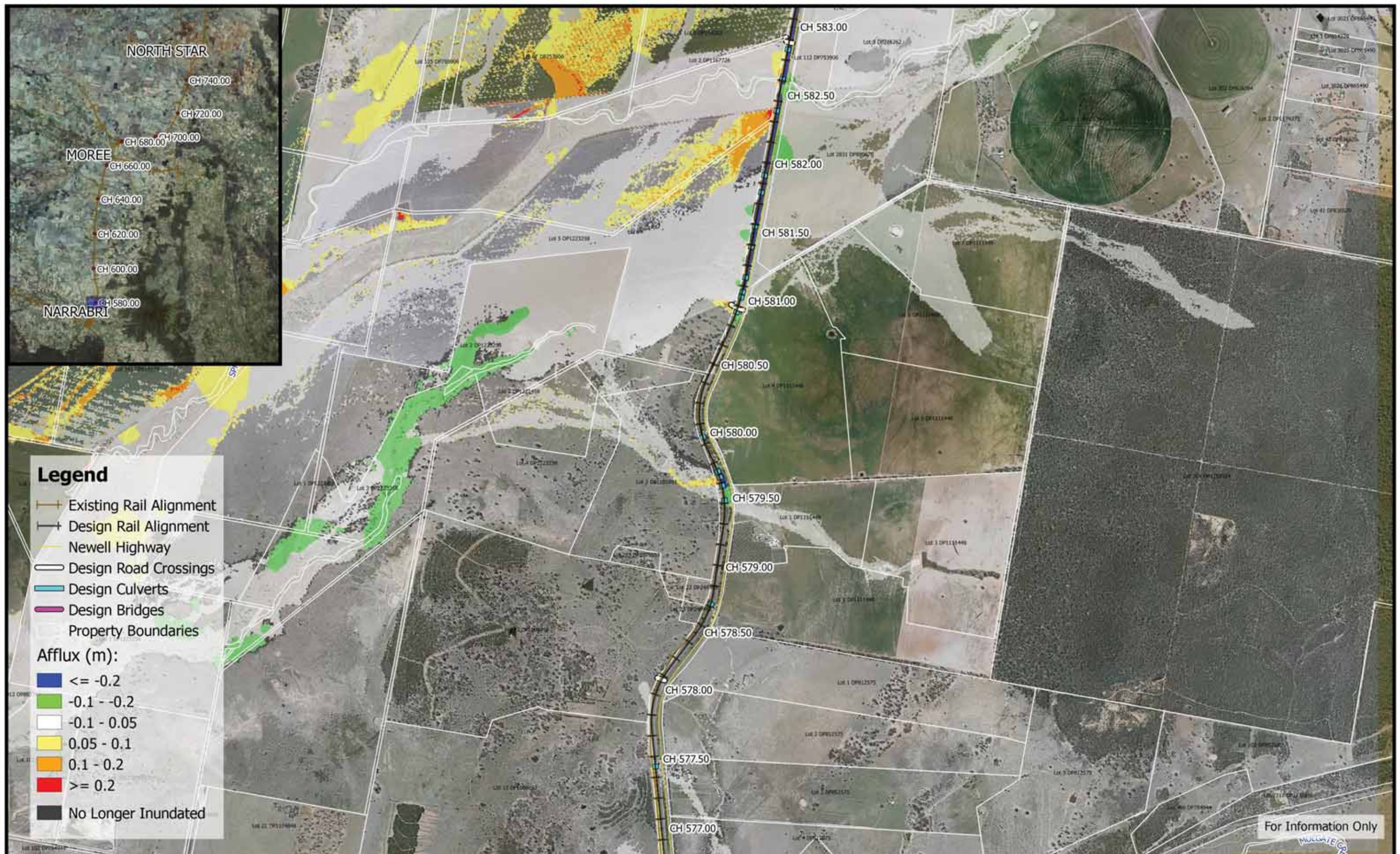




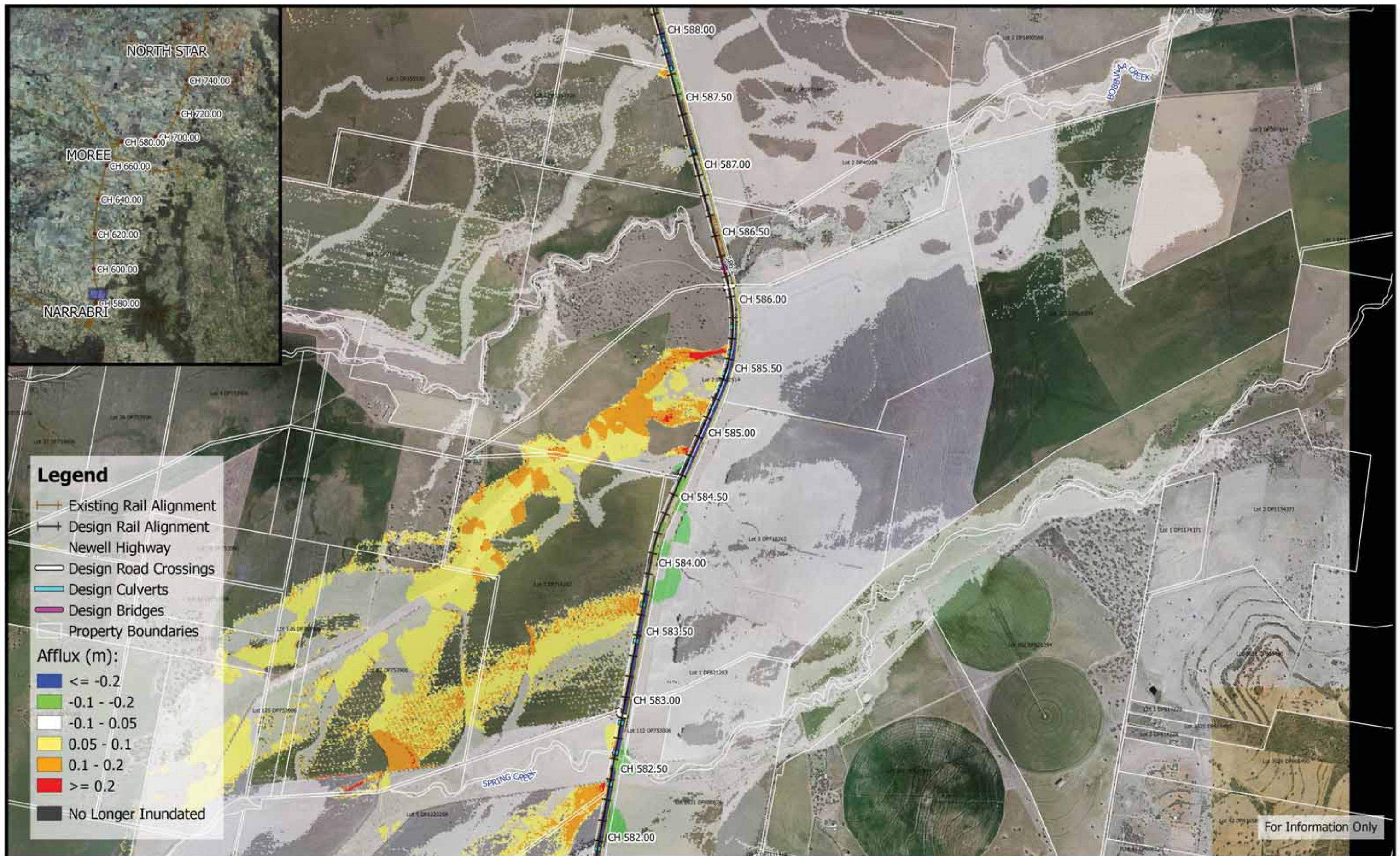
















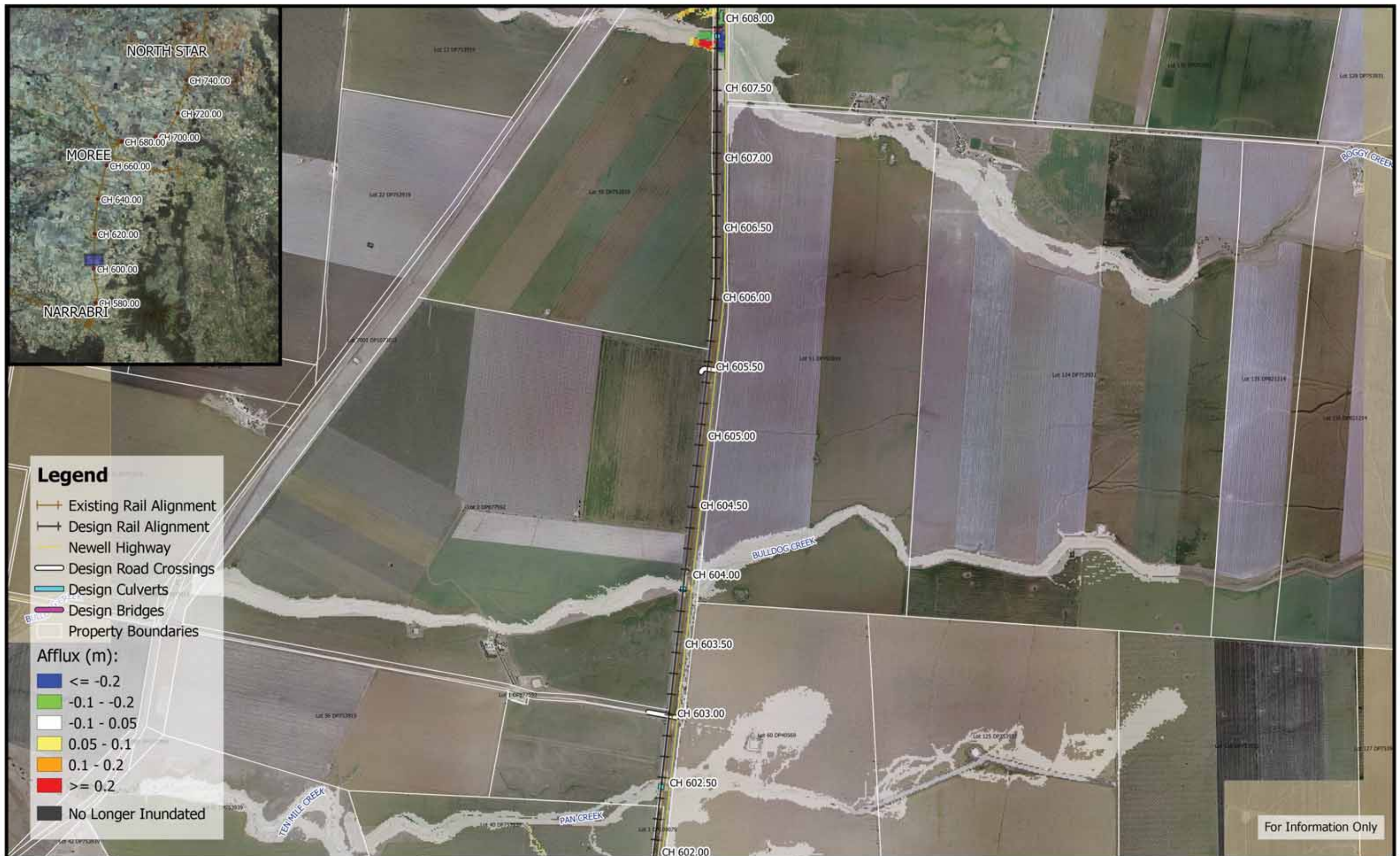












For Information Only



250 0 250 500 750 1000 m

1:25,000

Coordinate system: GDA94 MGA Zone 55  
Aerial Source: NSW Six Map  
Scale ratio correct when printed at A3



Date: 20/5/2019

Rev A: For Information Only

Prepared By: stephensk

**Inland Rail - Narrabri to North Star**  
IFC - Flood Study for Separable Portion 1

**Figure DE10A7**

10% AEP Flood Afflux - CH 605.00





**Inland Rail - Narrabri to North Star**  
 IFC - Flood Study for Separable Portion 1

**Figure DE10A8**  
 10% AEP Flood Afflux - CH 610.00

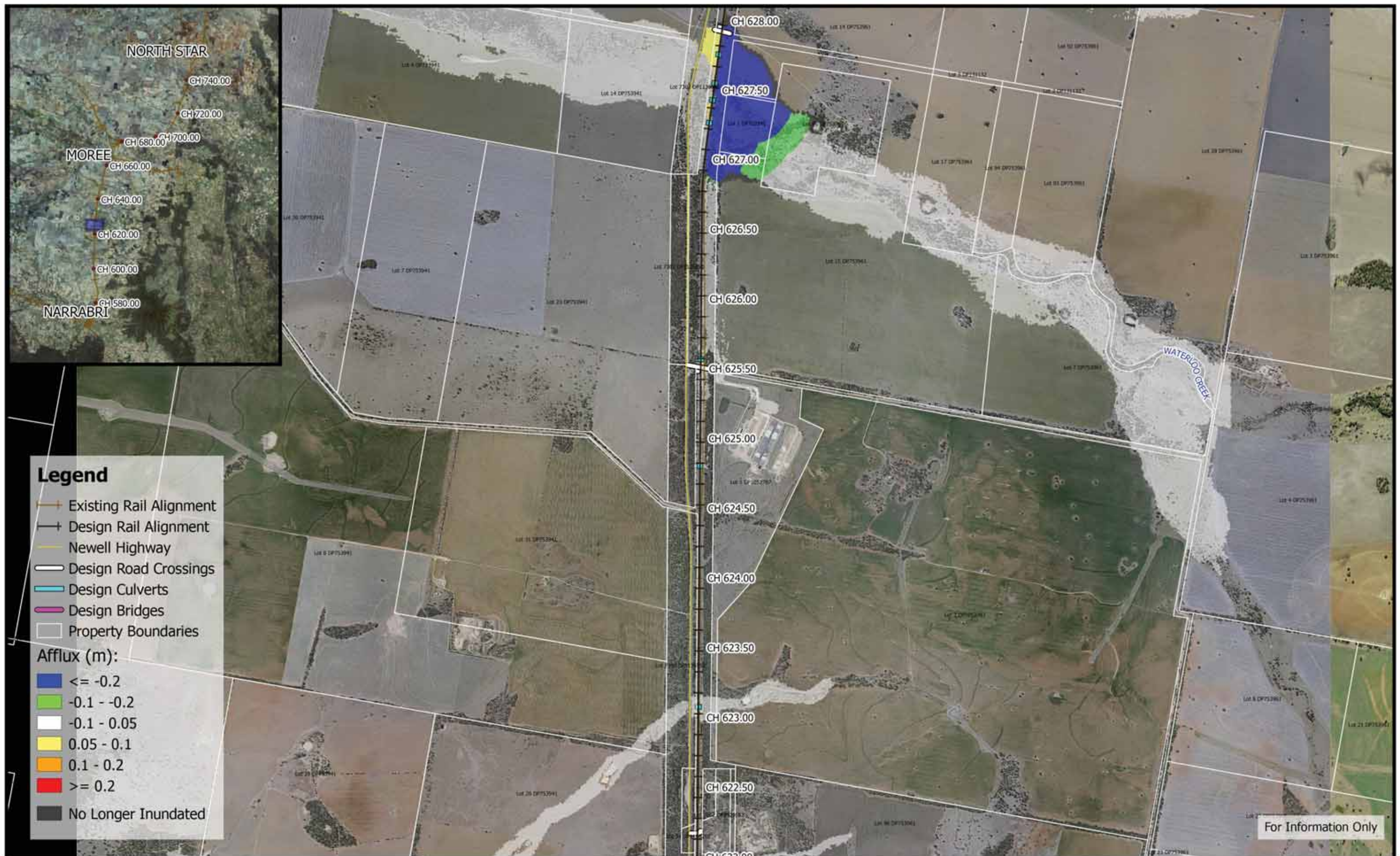




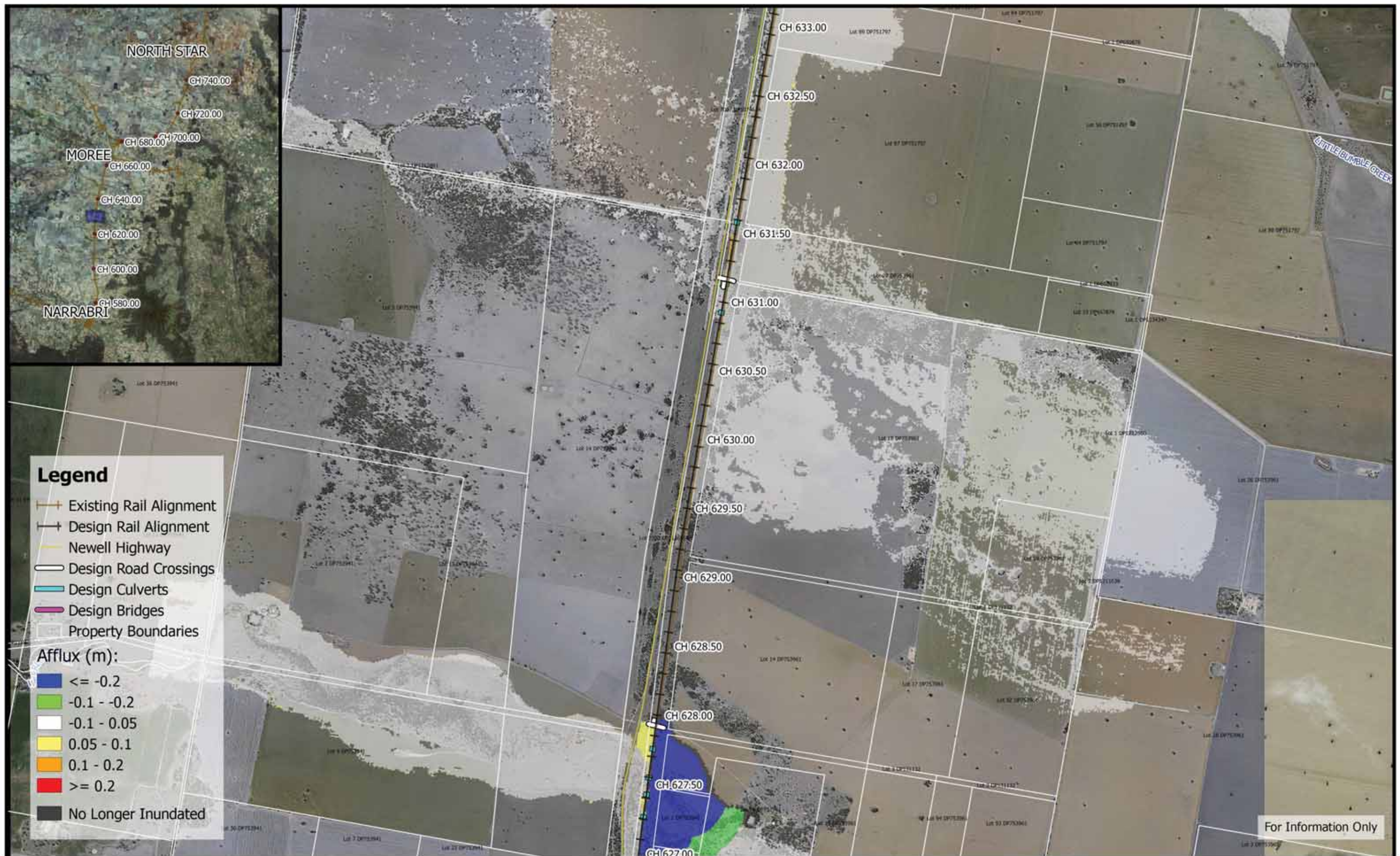












For Information Only



250 0 250 500 750 1000 m

1:25,000

Coordinate system: GDA94 MGA Zone 55  
Aerial Source: NSW Six Map  
Scale ratio correct when printed at A3



Date: 20/5/2019

Rev A: For Information Only

Prepared By: stephensk

**Inland Rail - Narrabri to North Star**  
IFC - Flood Study for Separable Portion 1

**Figure DE10A12**

10% AEP Flood Afflux - CH 630.00





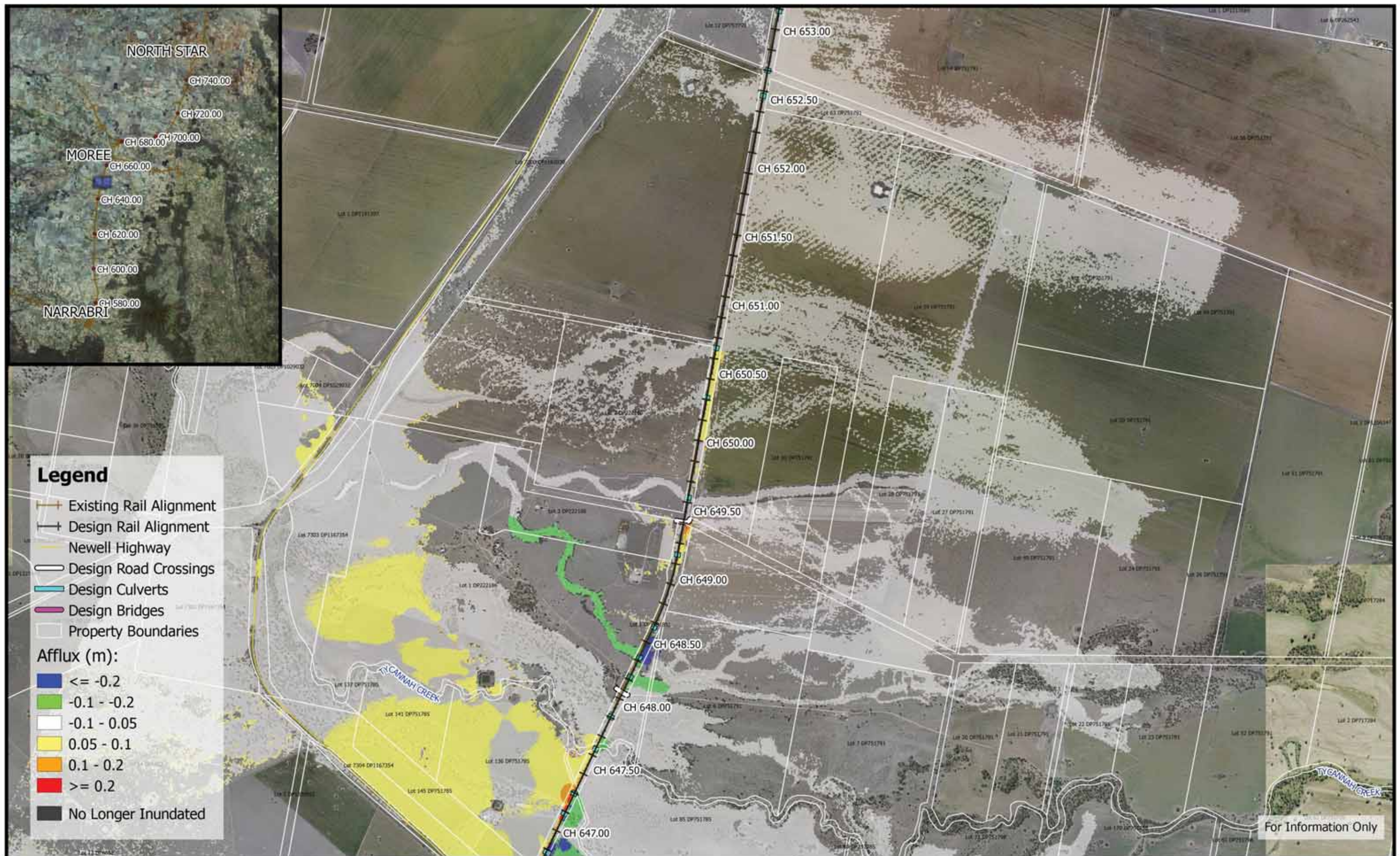












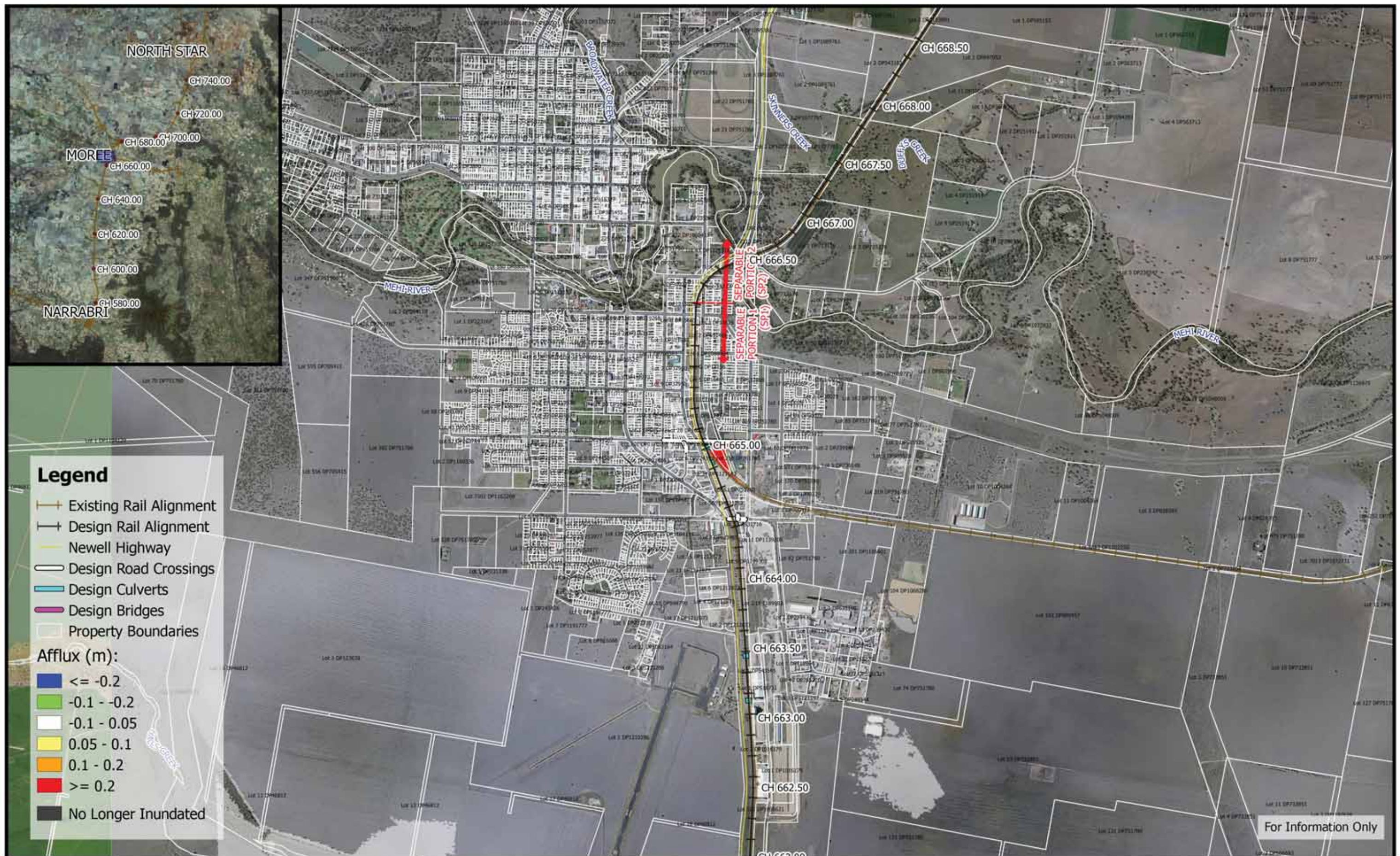
























	<p>250 0 250 500 750 1000 m</p> <p>1:25,000</p> <p>Coordinate system: GDA94 MGA Zone 55 Aerial Source: NSW Six Map Scale ratio correct when printed at A3</p>		Date: 20/5/2019	<p><b>Inland Rail - Narrabri to North Star</b> IFC - Flood Study for Separable Portion 1</p> <p><b>Figure DE10A22</b> 10% AEP Flood Afflux - CH 680.00</p>
			Rev A: For Information Only	
			Prepared By: stephensk	







