

APPENDIX

E

Flood Study Report

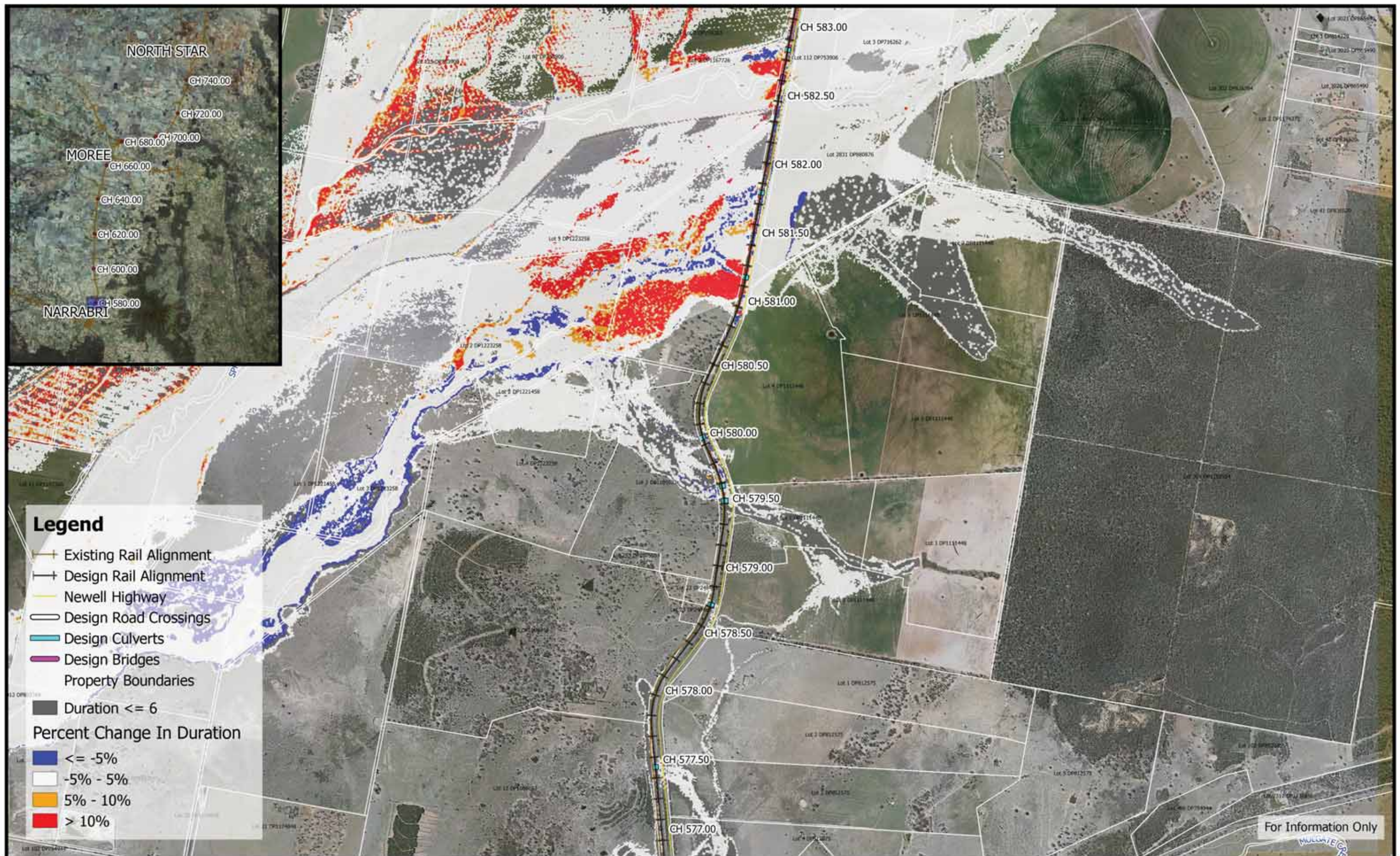
Attachment C Design Conditions Flood Impact Maps

► Flood Duration Change 0.05% AEP: *Figures DE0.05DC1 to DE0.05DC377*

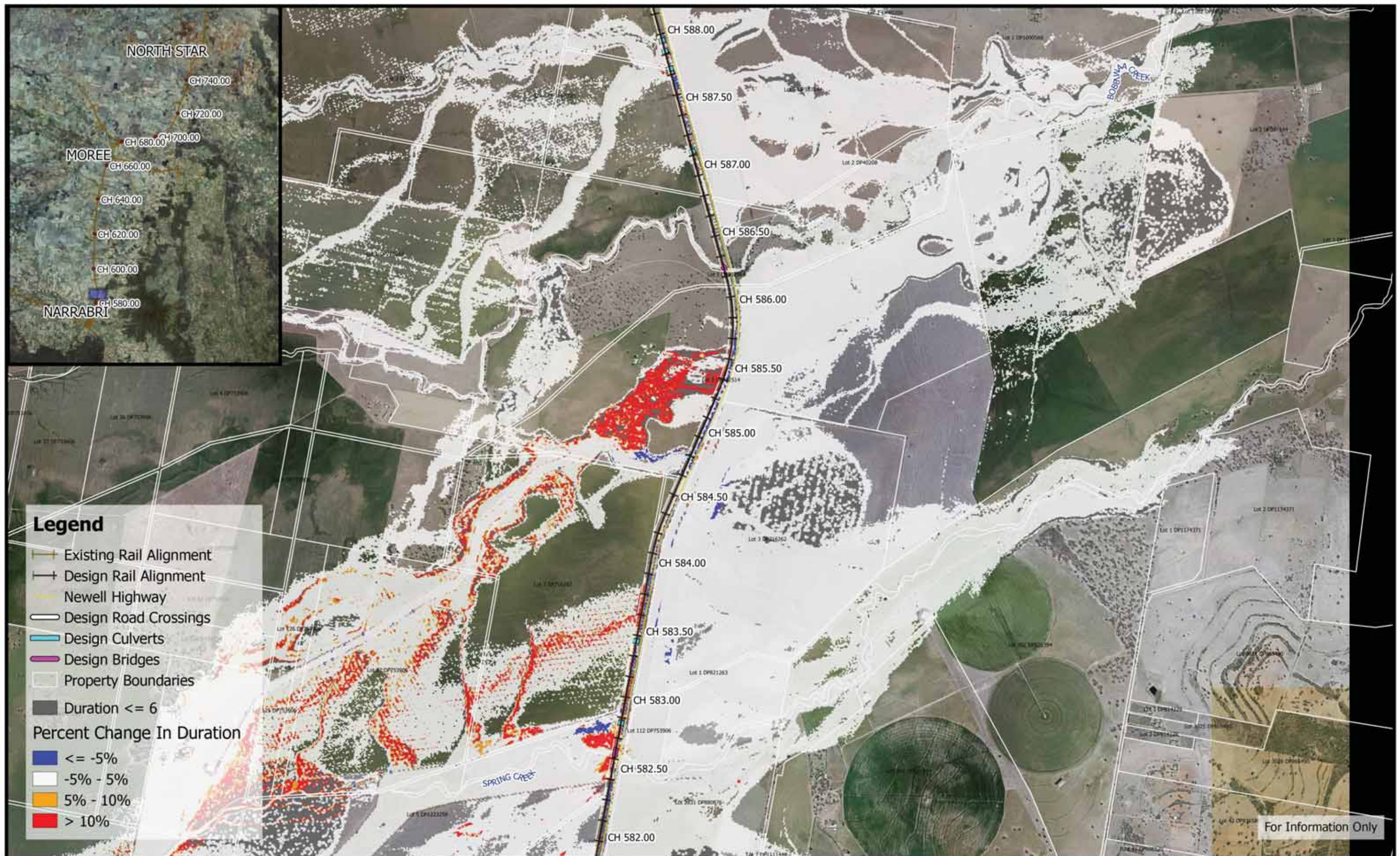
NARRABRI TO NORTH STAR SUBMISSIONS PREFERRED INFRASTRUCTURE REPORT







	<p>250 0 250 500 750 1000 m</p> <p>1:25,000</p> <p>Coordinate system: GDA94 MGA Zone 55 Aerial Source: NSW Six Map Scale ratio correct when printed at A3</p>	<p>wsp M M</p> <p>MOTT MACDONALD</p>	<p>Date: 10/7/2019</p> <p>Rev A: For Information Only</p> <p>Prepared By: stephensk</p>	<p>Inland Rail - Narrabri to North Star IFC - Flood Study for Separable Portion 1</p> <p>Figure DE0.05D2</p> <p><i>0.05% AEP Percentage Change In Duration For Flood Depths >200mm - CH 580.00</i></p>
--	---	---	---	--



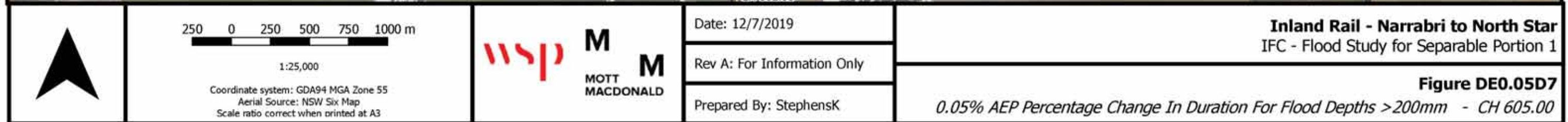


	<p>250 0 250 500 750 1000 m</p> <p>1:25,000</p> <p>Coordinate system: GDA94 MGA Zone 55 Aerial Source: NSW Six Map Scale ratio correct when printed at A3</p>		Date: 10/7/2019	<p>Inland Rail - Narrabri to North Star IFC - Flood Study for Separable Portion 1</p>
			Rev A: For Information Only	
Prepared By: stephensk				



	<p>250 0 250 500 750 1000 m</p> <p>1:25,000</p> <p>Coordinate system: GDA94 MGA Zone 55 Aerial Source: NSW Six Map Scale ratio correct when printed at A3</p>		<p>Date: 12/7/2019</p> <p>Rev A: For Information Only</p> <p>Prepared By: StephensK</p>	<p>Inland Rail - Narrabri to North Star IFC - Flood Study for Separable Portion 1</p> <p>Figure DE0.05D5 <i>0.05% AEP Percentage Change In Duration For Flood Depths >200mm - CH 595.00</i></p>
--	---	--	---	--







Inland Rail - Narrabri to North Star
IFC - Flood Study for Separable Portion 1

Figure DE0.05D8

0.05% AEP Percentage Change In Duration For Flood Depths >200mm - CH 610.00





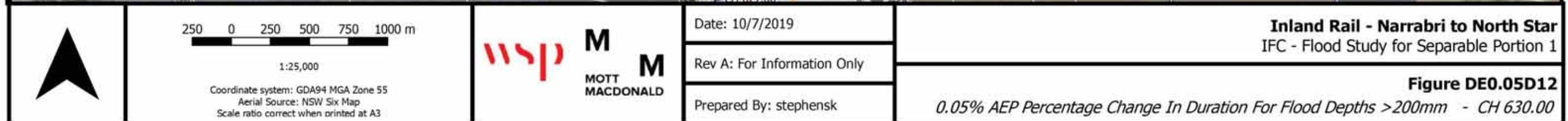
	<p>250 0 250 500 750 1000 m</p> <p>1:25,000</p> <p>Coordinate system: GDA94 MGA Zone 55 Aerial Source: NSW Six Map Scale ratio correct when printed at A3</p>		Date: 12/7/2019	<p>Inland Rail - Narrabri to North Star IFC - Flood Study for Separable Portion 1</p>	
			Rev A: For Information Only		<p>Figure DE0.05D10 <i>0.05% AEP Percentage Change In Duration For Flood Depths >200mm - CH 620.00</i></p>
			Prepared By: StephensK		

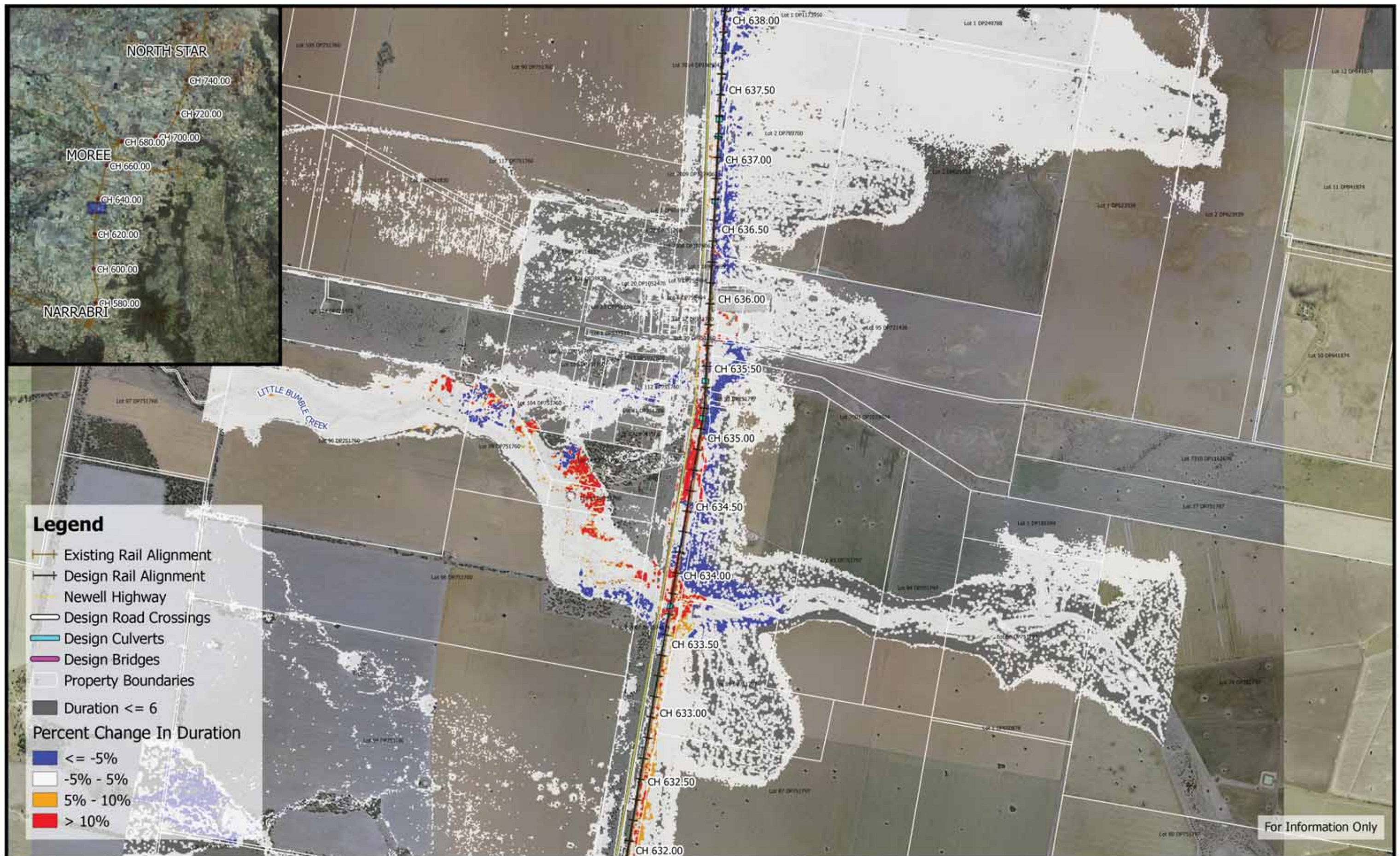


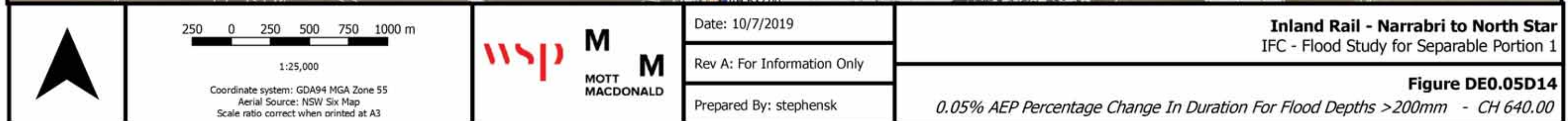
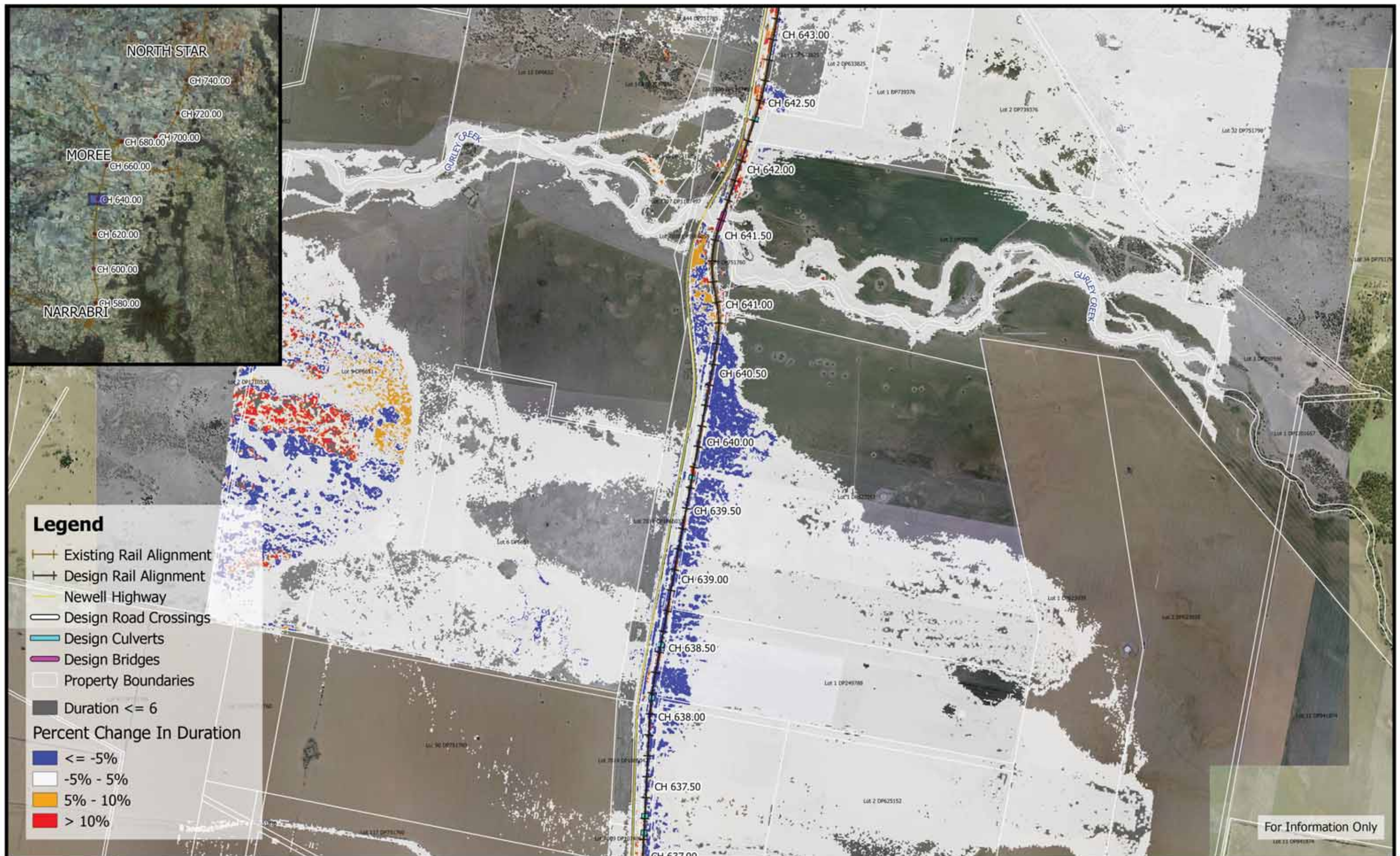
Inland Rail - Narrabri to North Star
IFC - Flood Study for Separable Portion 1

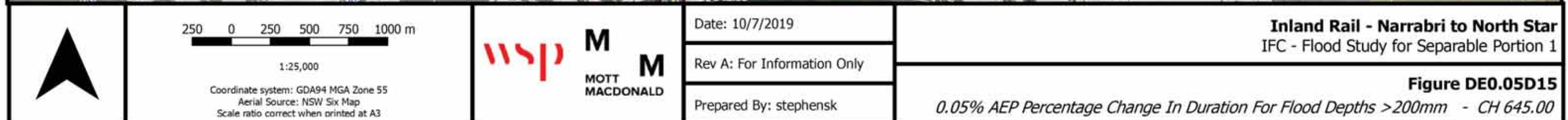
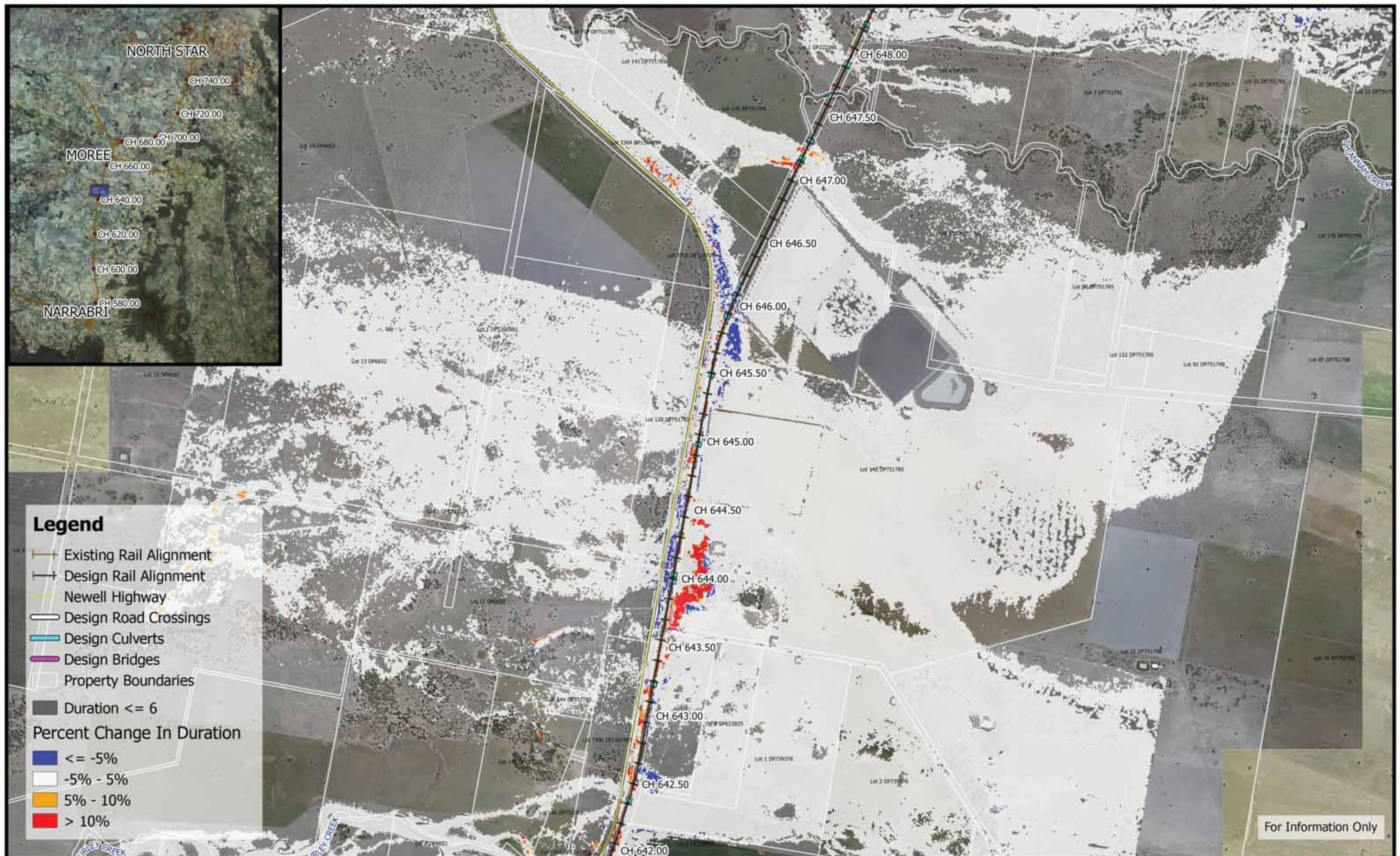
Figure DE0.05D11

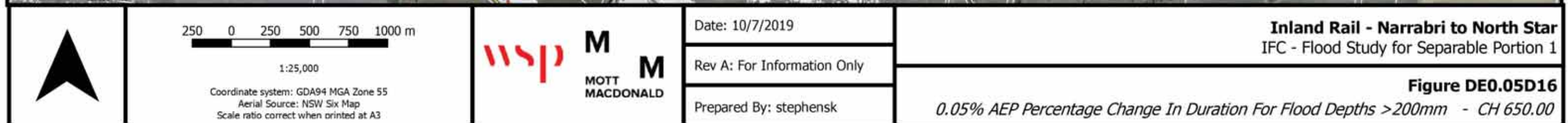
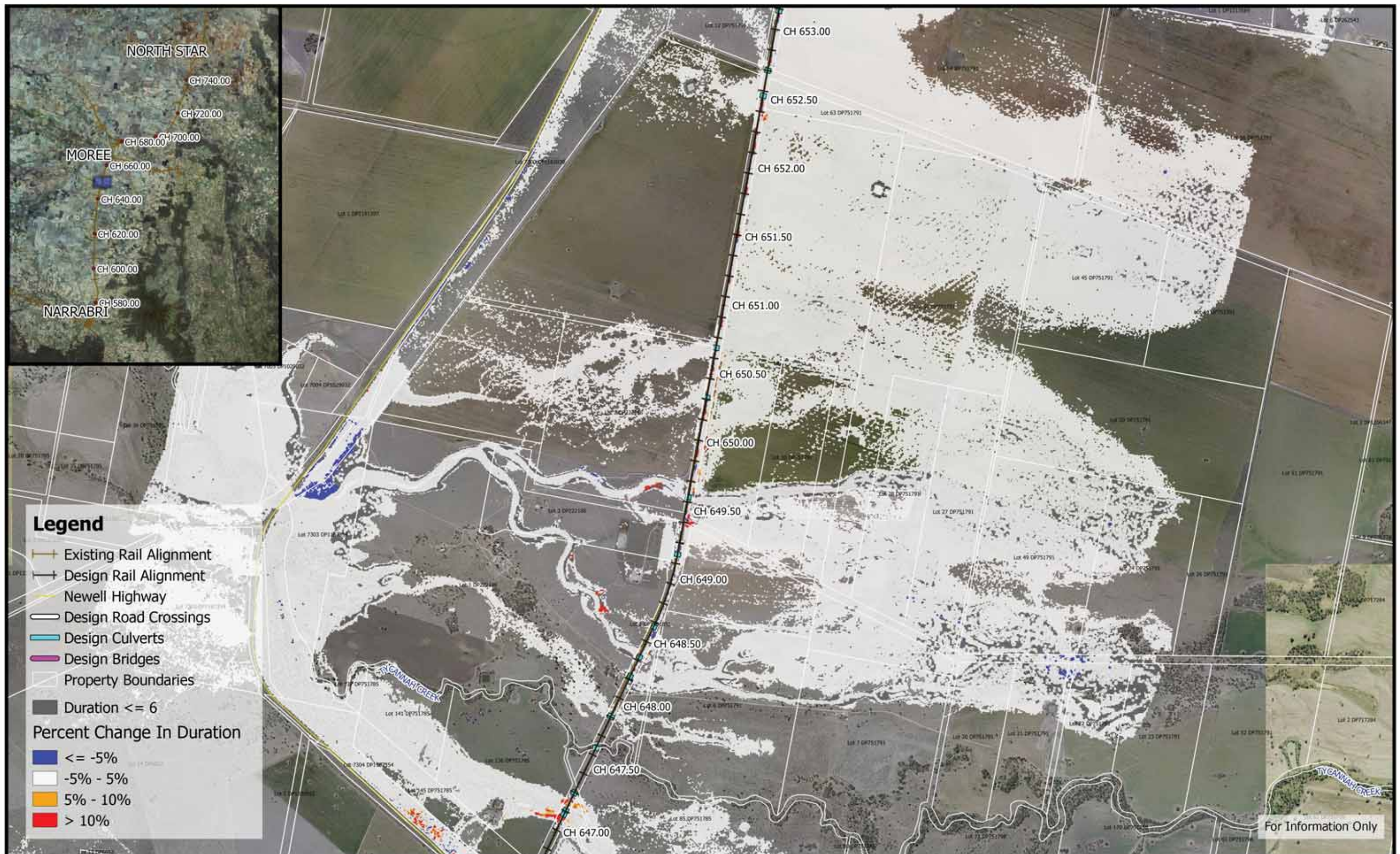
0.05% AEP Percentage Change In Duration For Flood Depths >200mm - CH 625.00

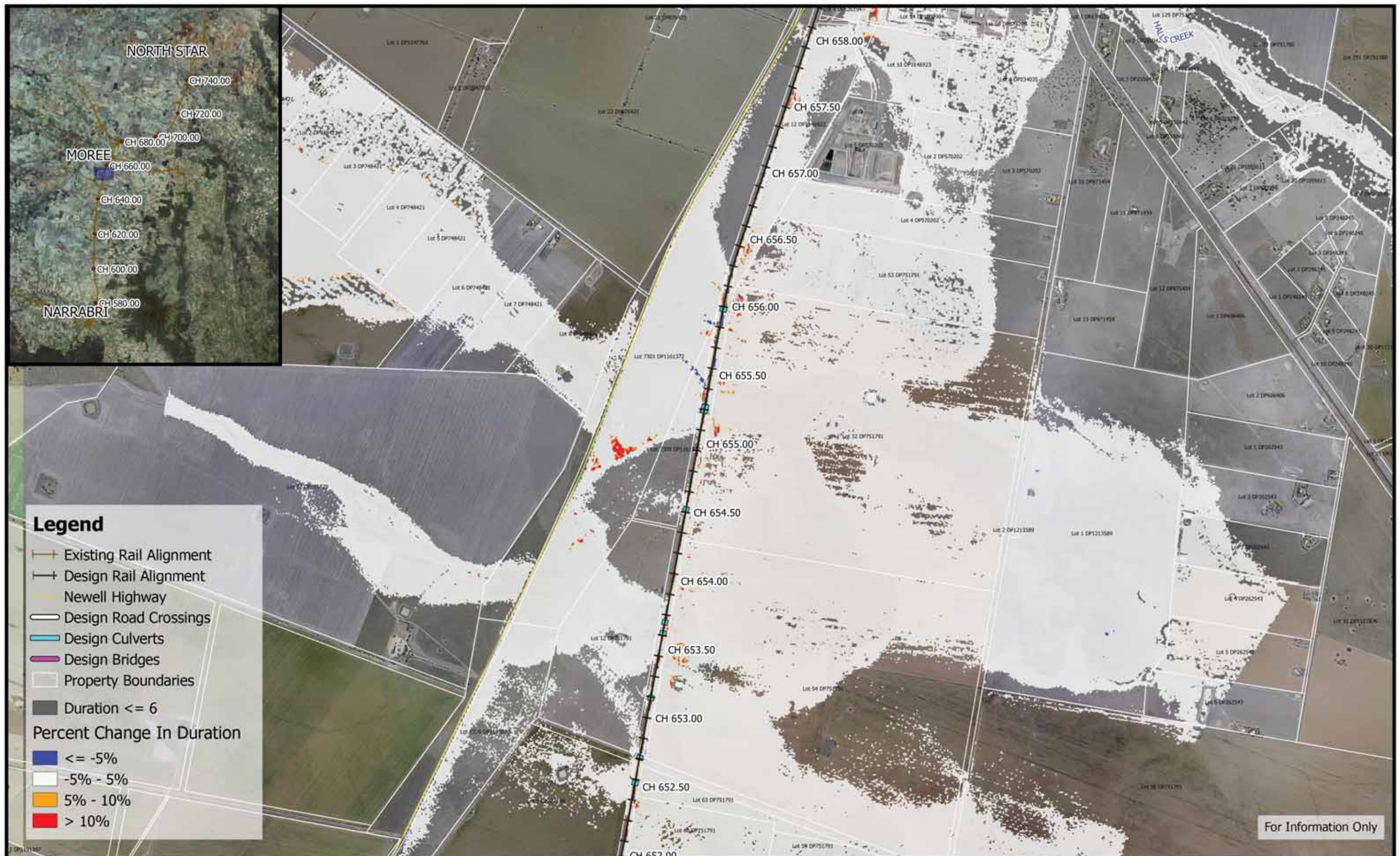




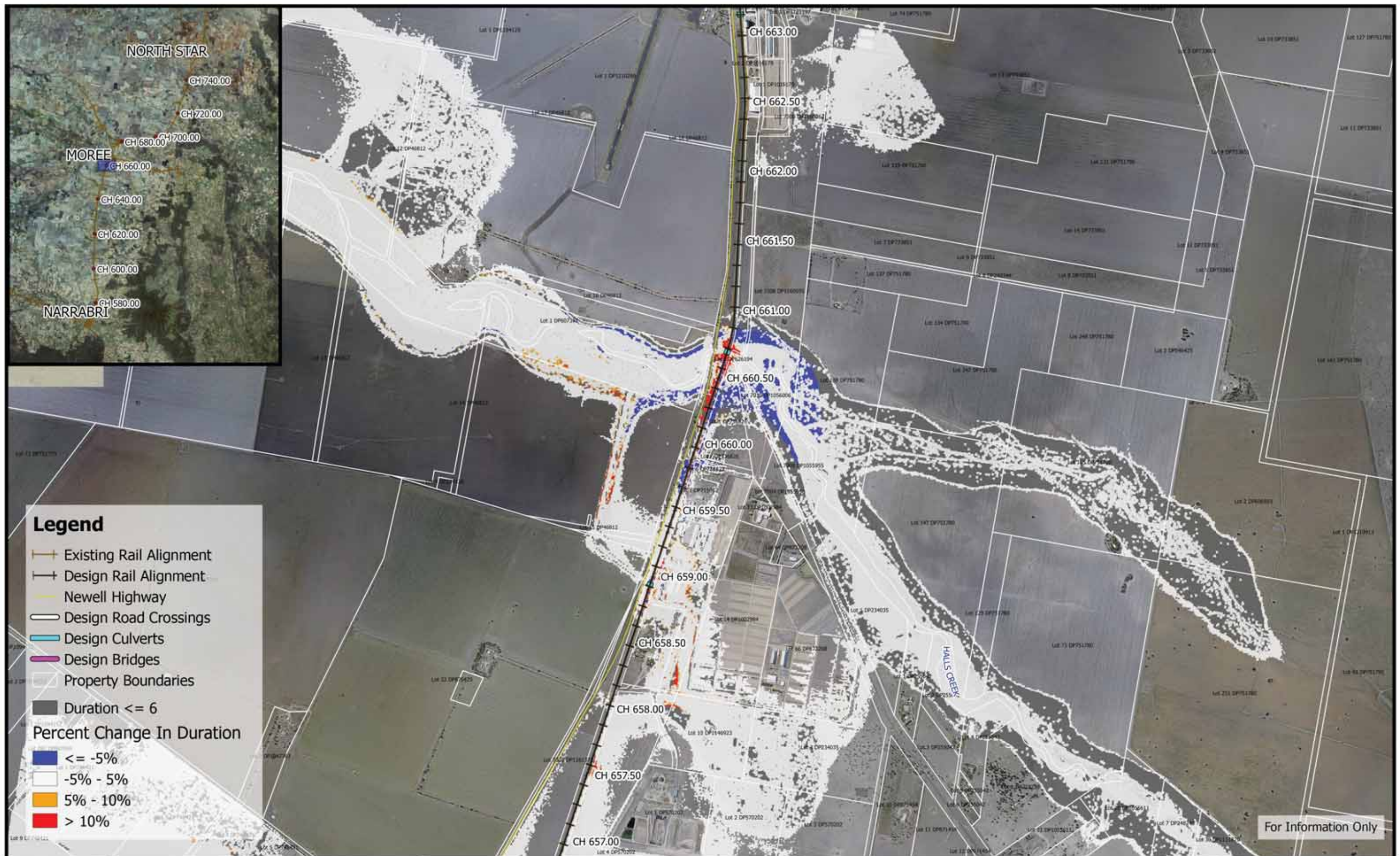




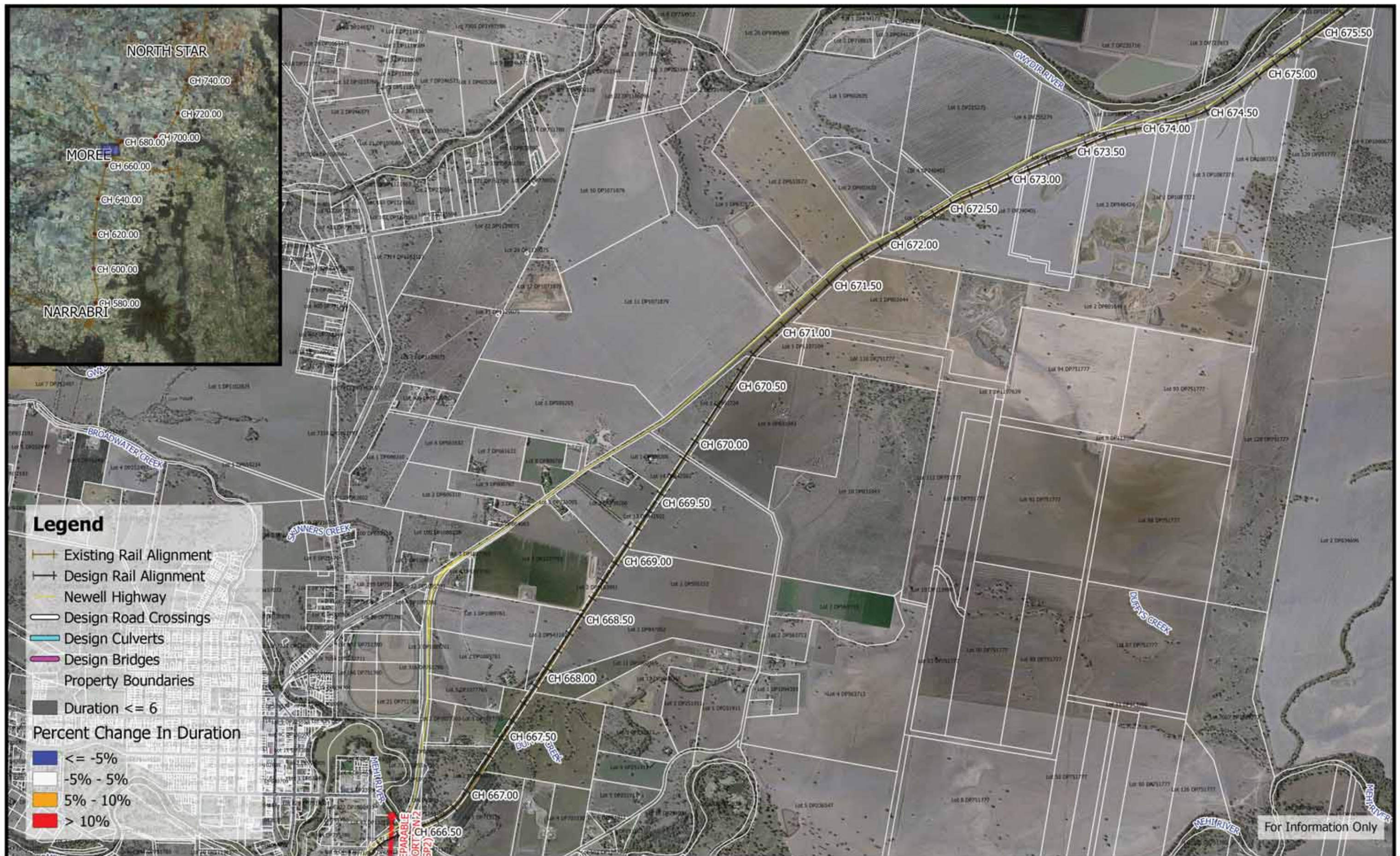




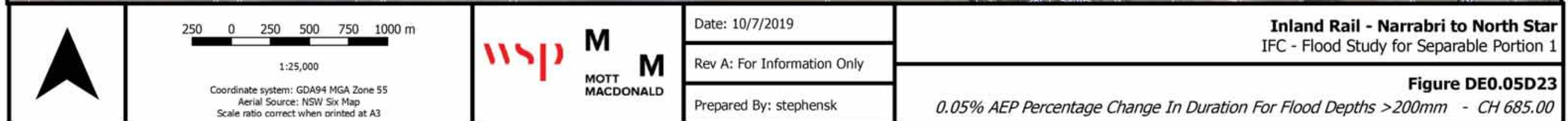
	<p>250 0 250 500 750 1000 m</p> <p>1:25,000</p> <p>Coordinate system: GDA94 MGA Zone 55 Aerial Source: NSW Six Map Scale ratio correct when printed at A3</p>	<p>wsp M M</p> <p>MOTT MACDONALD</p>	<p>Date: 10/7/2019</p> <p>Rev A: For Information Only</p> <p>Prepared By: stephensk</p>	<p>Inland Rail - Narrabri to North Star IFC - Flood Study for Separable Portion 1</p> <p>Figure DE0.05D17</p> <p><i>0.05% AEP Percentage Change In Duration For Flood Depths > 200mm - CH 655.00</i></p>
--	---	---	---	--

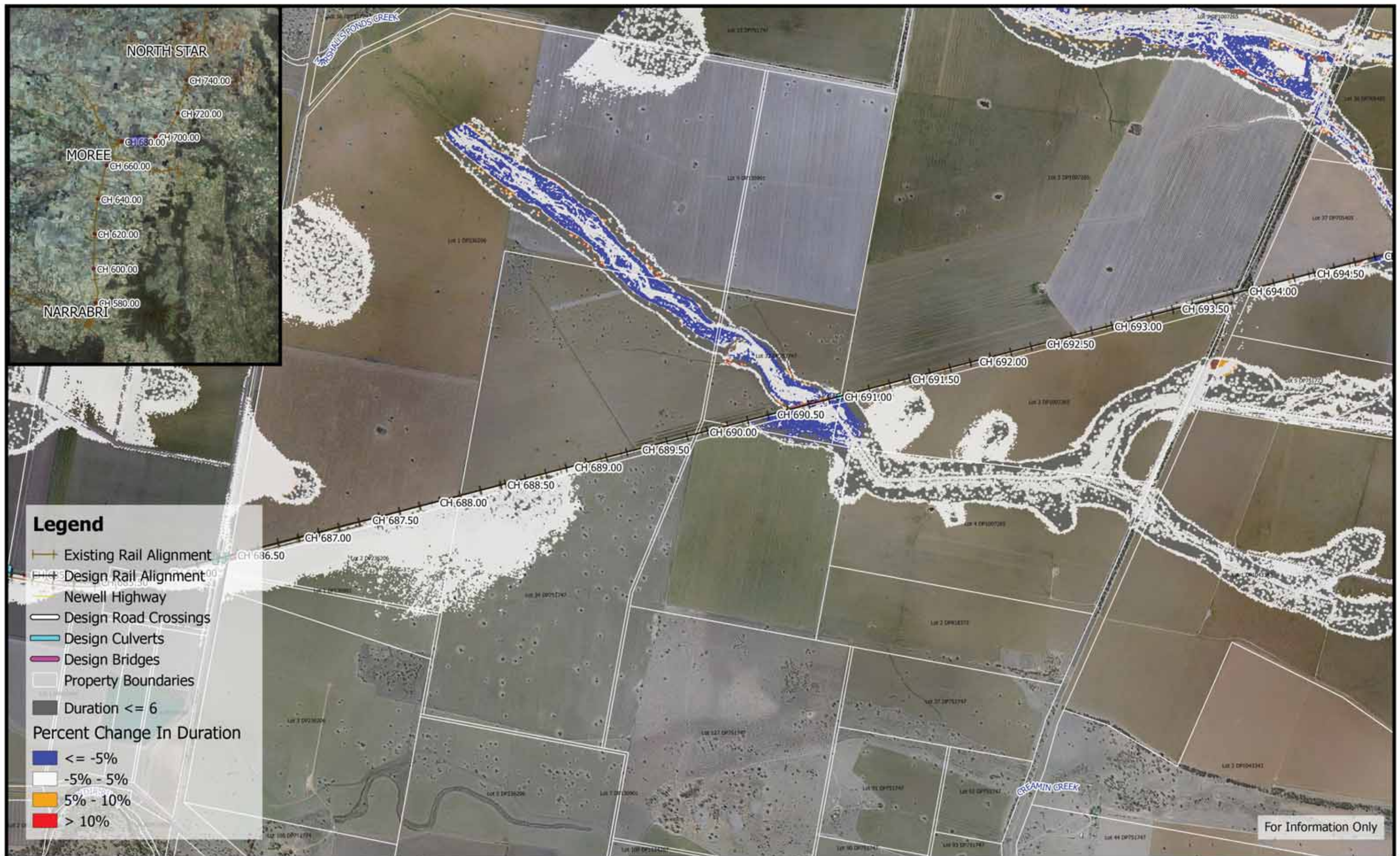








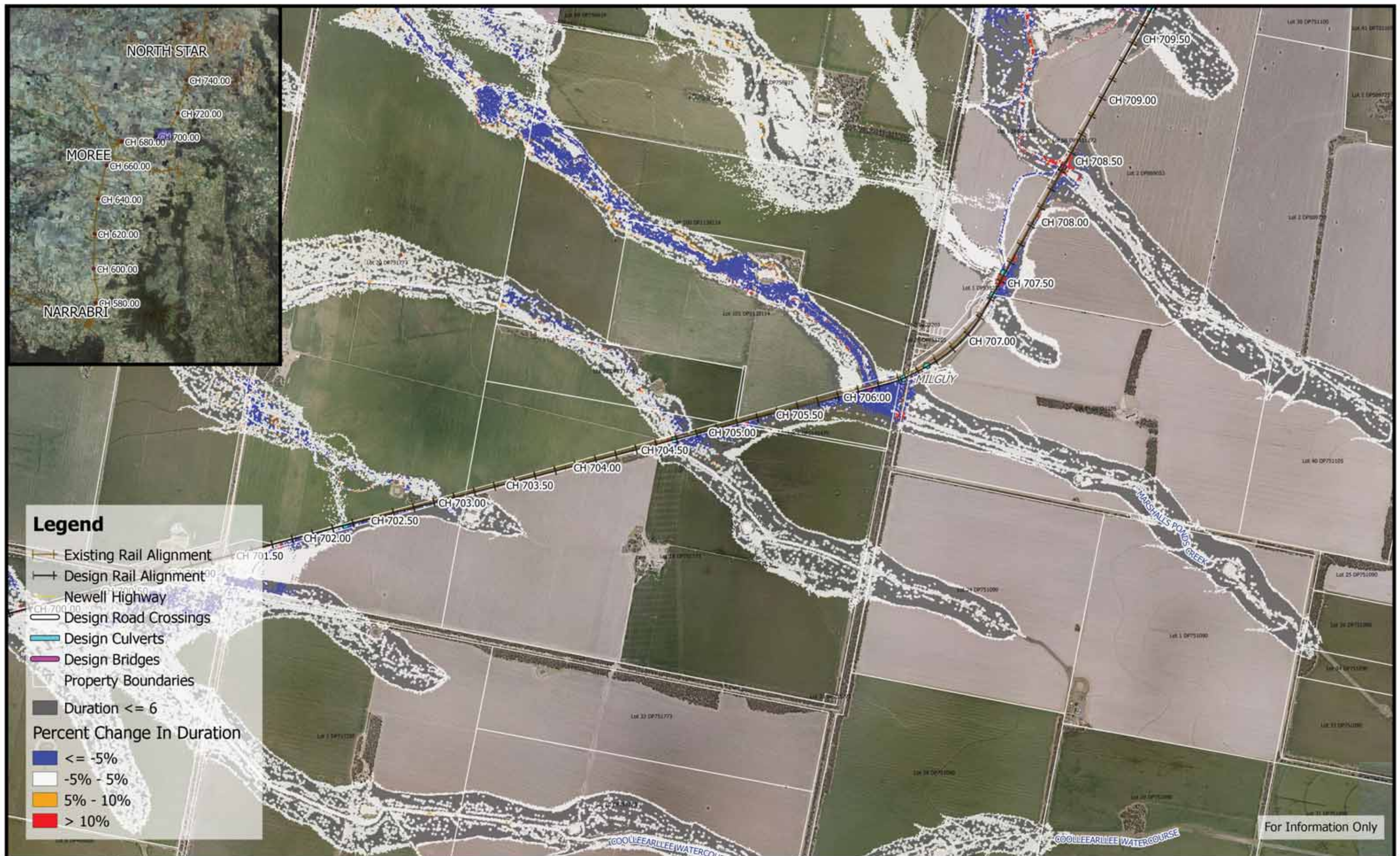




	<p>250 0 250 500 750 1000 m</p> <p>1:25,000</p> <p>Coordinate system: GDA94 MGA Zone 55 Aerial Source: NSW Six Map Scale ratio correct when printed at A3</p>		Date: 10/7/2019	<p>Inland Rail - Narrabri to North Star IFC - Flood Study for Separable Portion 1</p> <p>Figure DE0.05D24 <i>0.05% AEP Percentage Change In Duration For Flood Depths >200mm - CH 690.00</i></p>
			Rev A: For Information Only	
			Prepared By: stephensk	

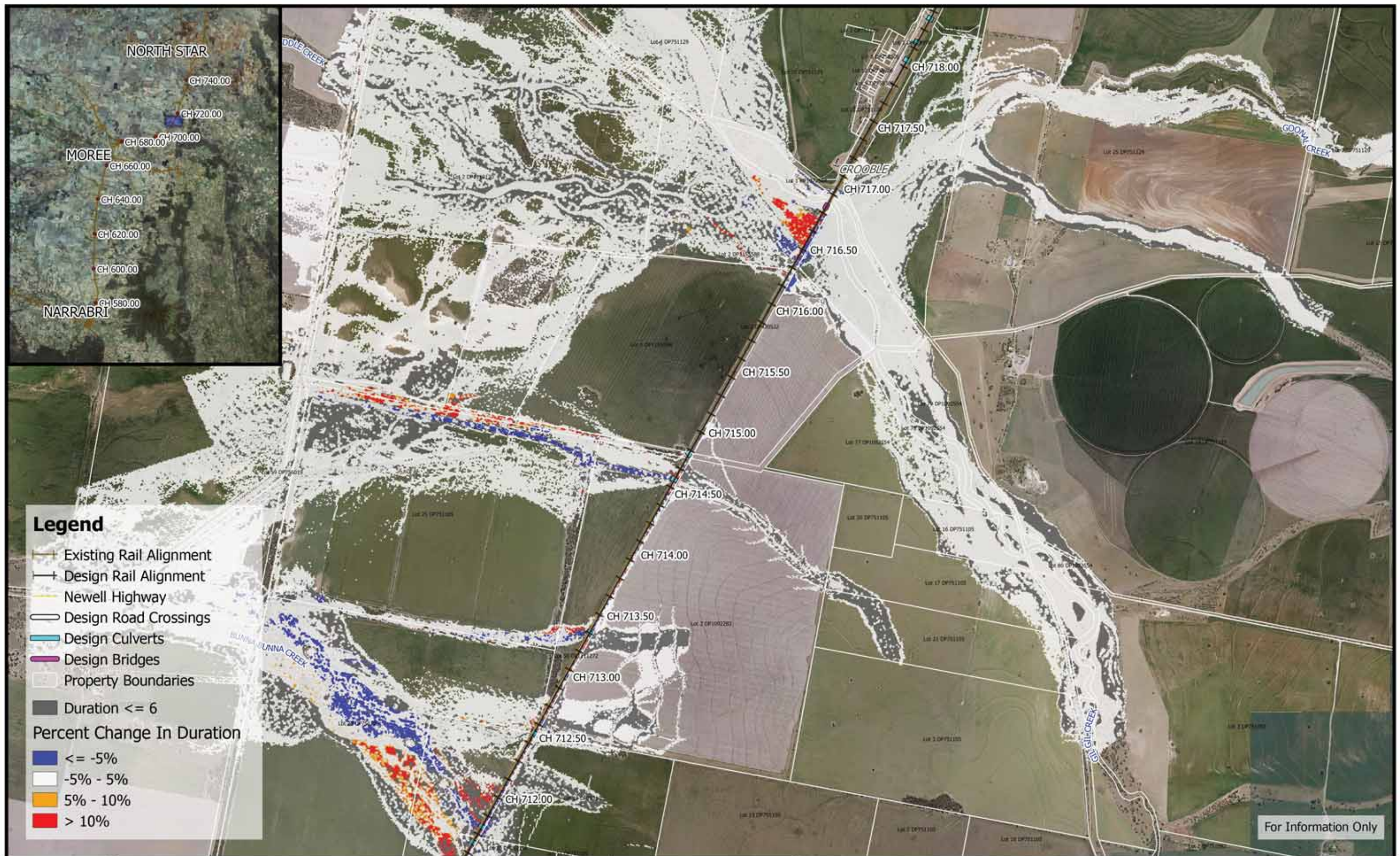


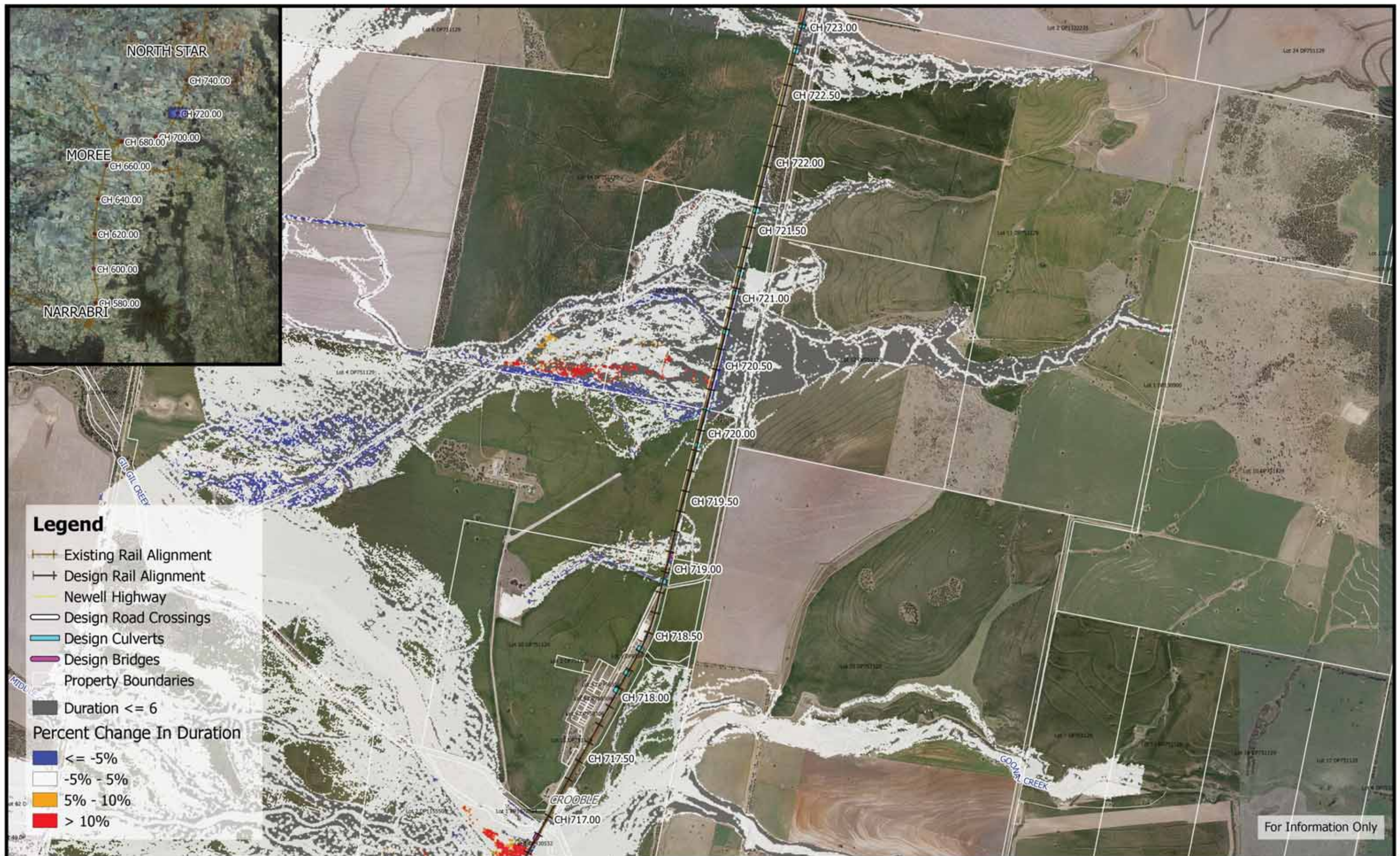
	<p>250 0 250 500 750 1000 m</p> <p>1:25,000</p> <p>Coordinate system: GDA94 MGA Zone 55 Aerial Source: NSW Six Map Scale ratio correct when printed at A3</p>	<p>wsp M M</p> <p>MOTT MACDONALD</p>	<p>Date: 10/7/2019</p> <p>Rev A: For Information Only</p> <p>Prepared By: stephensk</p>	<p>Inland Rail - Narrabri to North Star IFC - Flood Study for Separable Portion 1</p> <p>Figure DE0.05D25 <i>0.05% AEP Percentage Change In Duration For Flood Depths >200mm - CH 695.00</i></p>
--	---	--	---	---



	<p>250 0 250 500 750 1000 m</p> <p>1:25,000</p> <p>Coordinate system: GDA94 MGA Zone 55 Aerial Source: NSW Six Map Scale ratio correct when printed at A3</p>	<p>wsp M M</p> <p>MOTT MACDONALD</p>	<p>Date: 10/7/2019</p> <p>Rev A: For Information Only</p> <p>Prepared By: stephensk</p>	<p>Inland Rail - Narrabri to North Star IFC - Flood Study for Separable Portion 1</p> <p>Figure DE0.05D27</p> <p><i>0.05% AEP Percentage Change In Duration For Flood Depths >200mm - CH 705.00</i></p>
--	---	---	---	---









	<p>250 0 250 500 750 1000 m</p> <p>1:25,000</p> <p>Coordinate system: GDA94 MGA Zone 55 Aerial Source: NSW Six Map Scale ratio correct when printed at A3</p>	<p>wsp M M</p> <p>MOTT MACDONALD</p>	<p>Date: 10/7/2019</p> <p>Rev A: For Information Only</p> <p>Prepared By: stephensk</p>	<p>Inland Rail - Narrabri to North Star IFC - Flood Study for Separable Portion 1</p> <p>Figure DE0.05D31 <i>0.05% AEP Percentage Change In Duration For Flood Depths >200mm - CH 725.00</i></p>
--	---	---	---	--

