

# APPENDIX

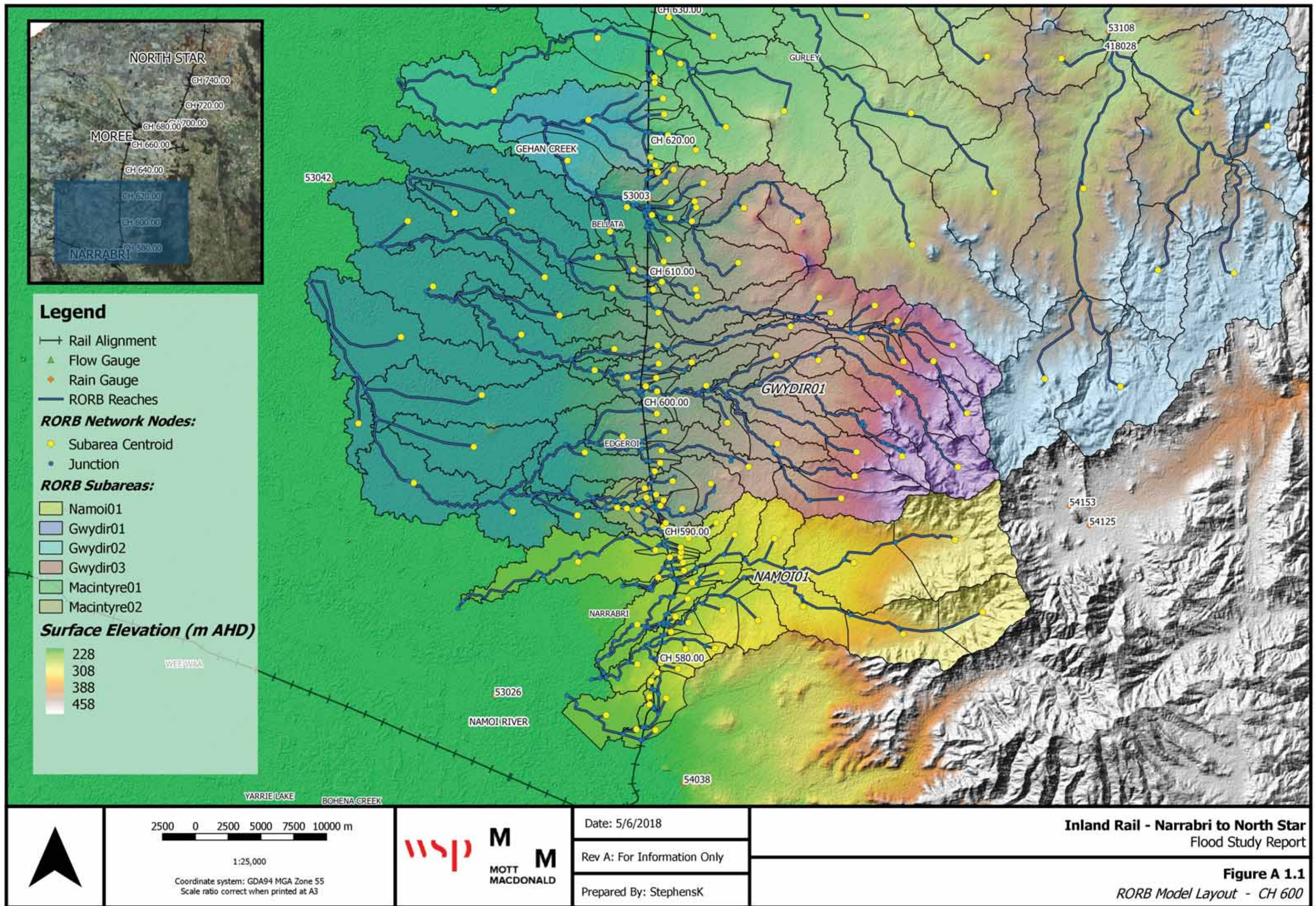
# E

## Flood Study Report

### **Attachment A** Hydrological and Hydraulic Model Layouts

- ▶ Hydrological Model Layouts: *Figures A1.1 to A1.4*
- ▶ Hydraulic Model Layouts: *Figures A2.1 to A2.7*
- ▶ Hydrological Model Sub-Catchment Maps: *Figures A3.1 to A3.37*









## Legend

- +— Rail Alignment
- ▲ Flow Gauge
- ◆ Rain Gauge
- RORB Reaches

### RORB Network Nodes:

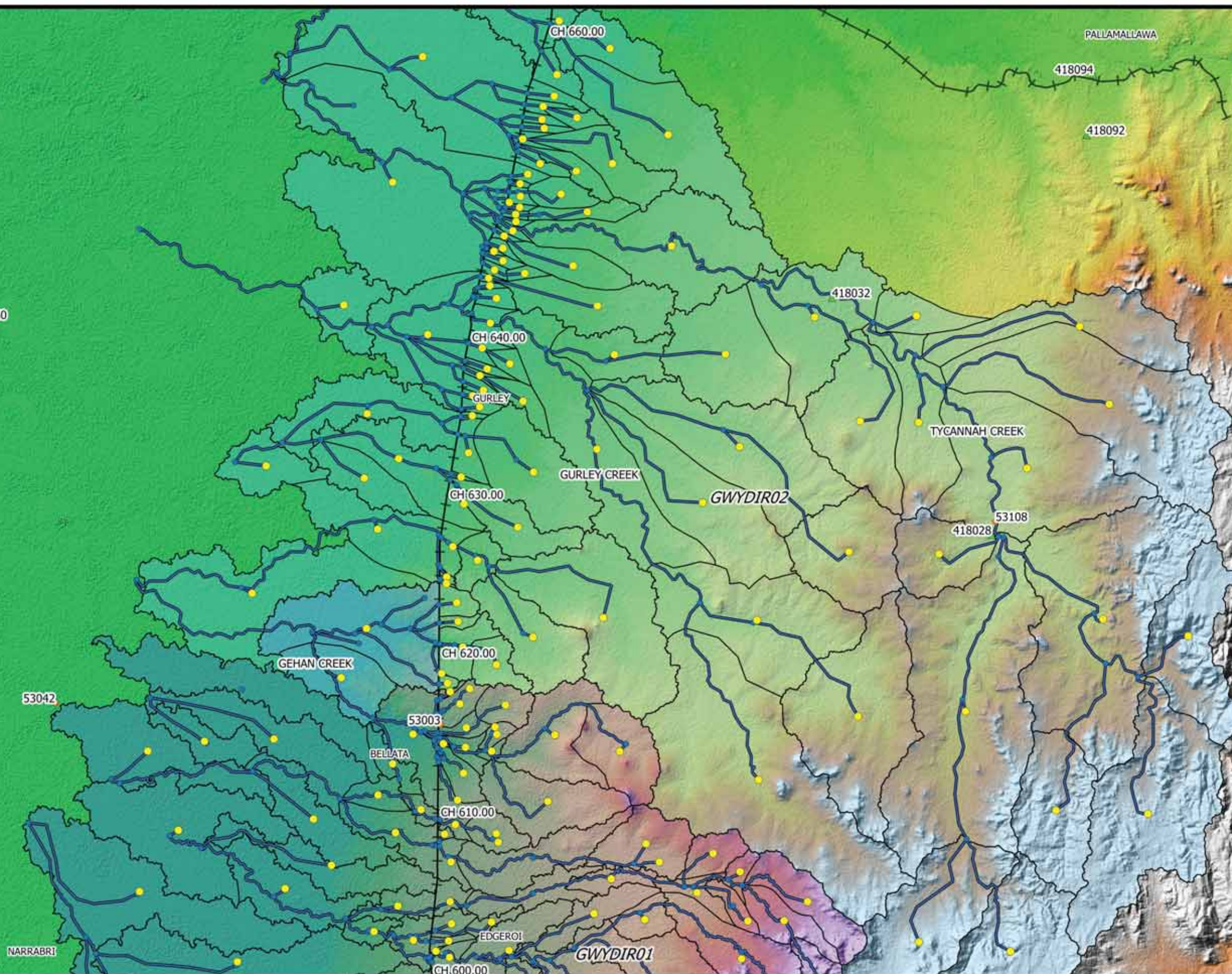
- Subarea Centroid
- Junction

### RORB Subareas:

- Namoi01
- Gwydir01
- Gwydir02
- Gwydir03
- Macintyre01
- Macintyre02

### Surface Elevation (m AHD)

- 228
- 308
- 388
- 458



2500 0 2500 5000 7500 10000 m

1:25,000

Coordinate system: GDA94 MGA Zone 55  
Scale ratio correct when printed at A3



Date: 5/6/2018

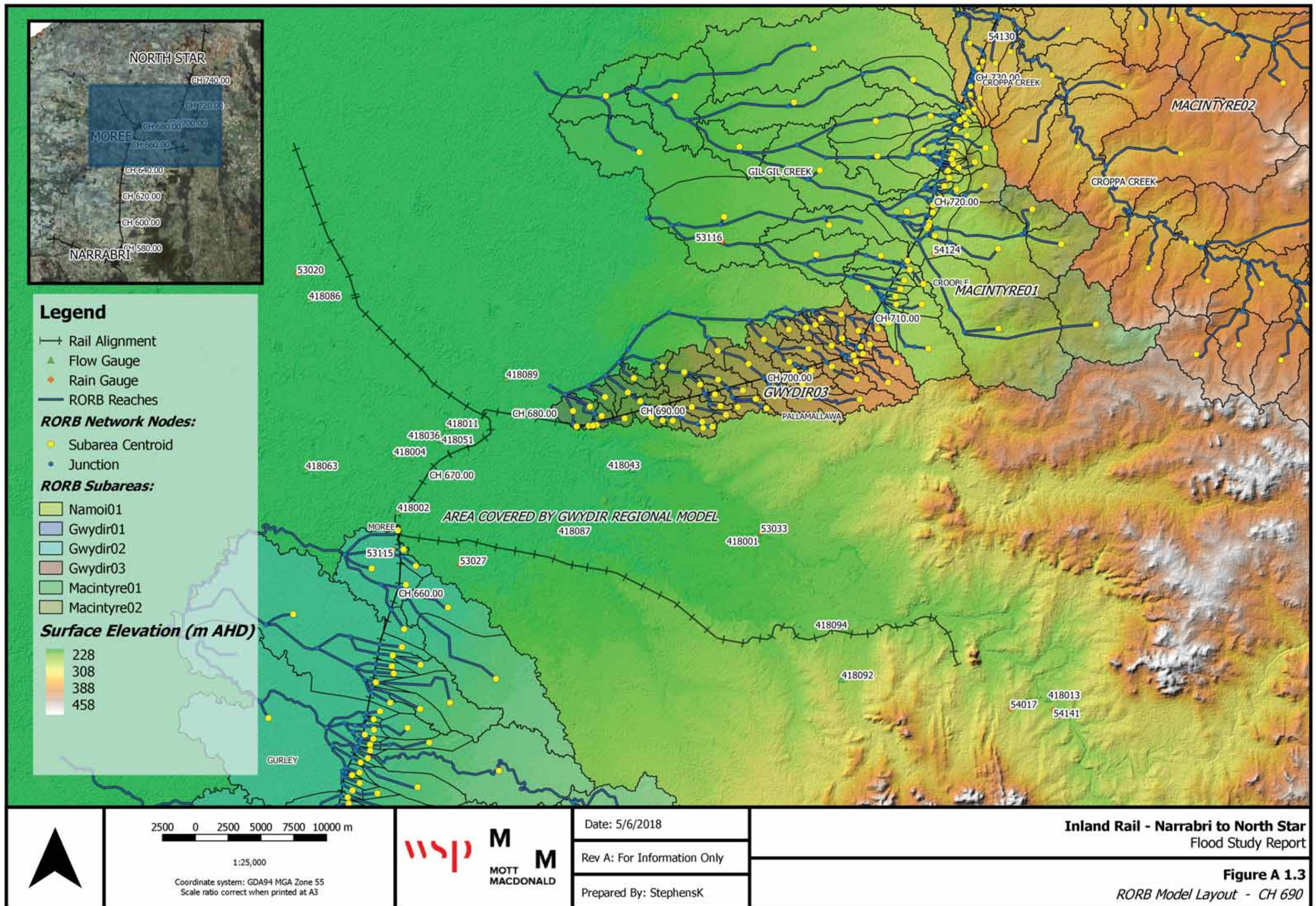
Rev A: For Information Only

Prepared By: StephensK

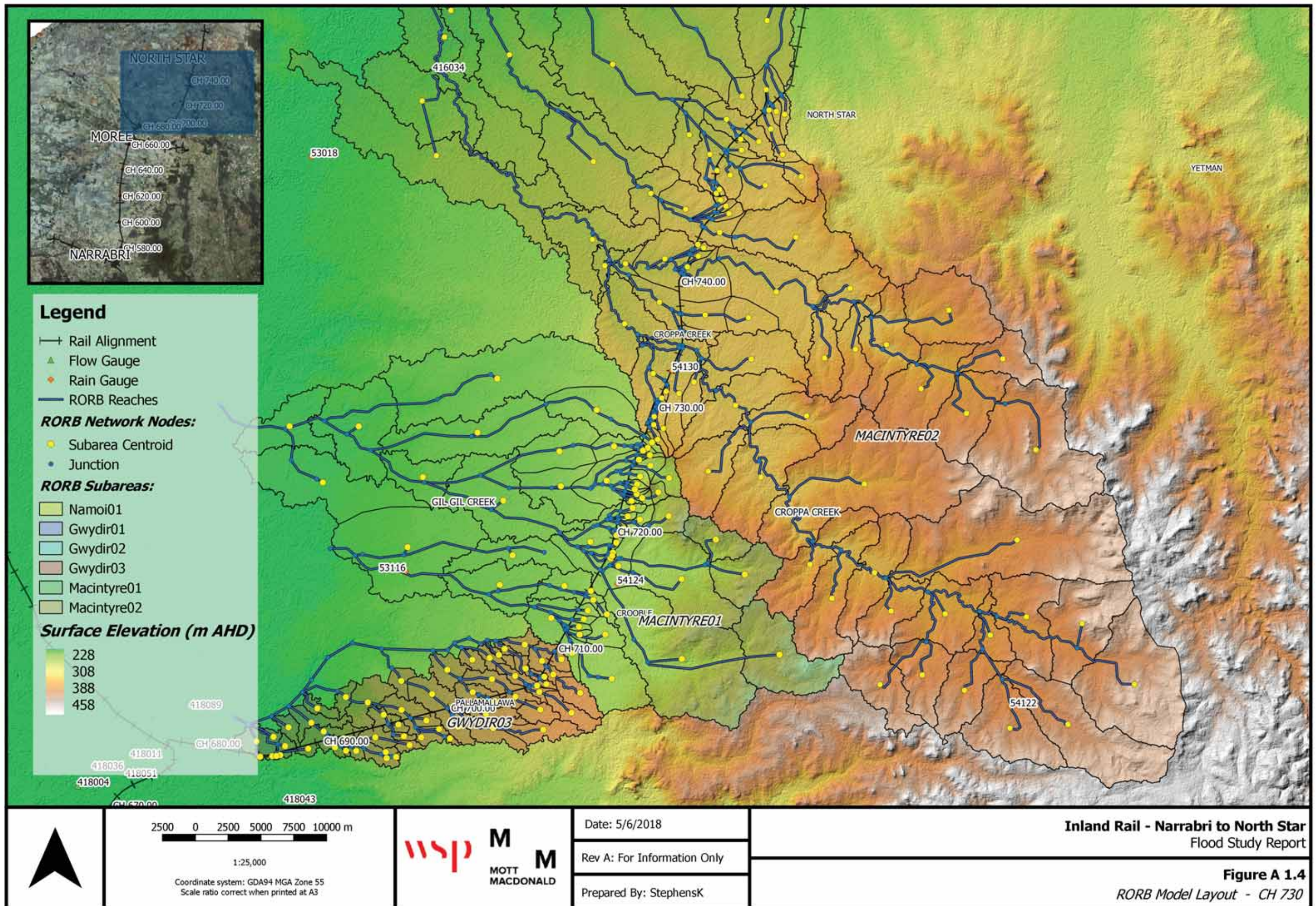
Inland Rail - Narrabri to North Star  
Flood Study Report

**Figure A 1.2**  
RORB Model Layout - CH 630

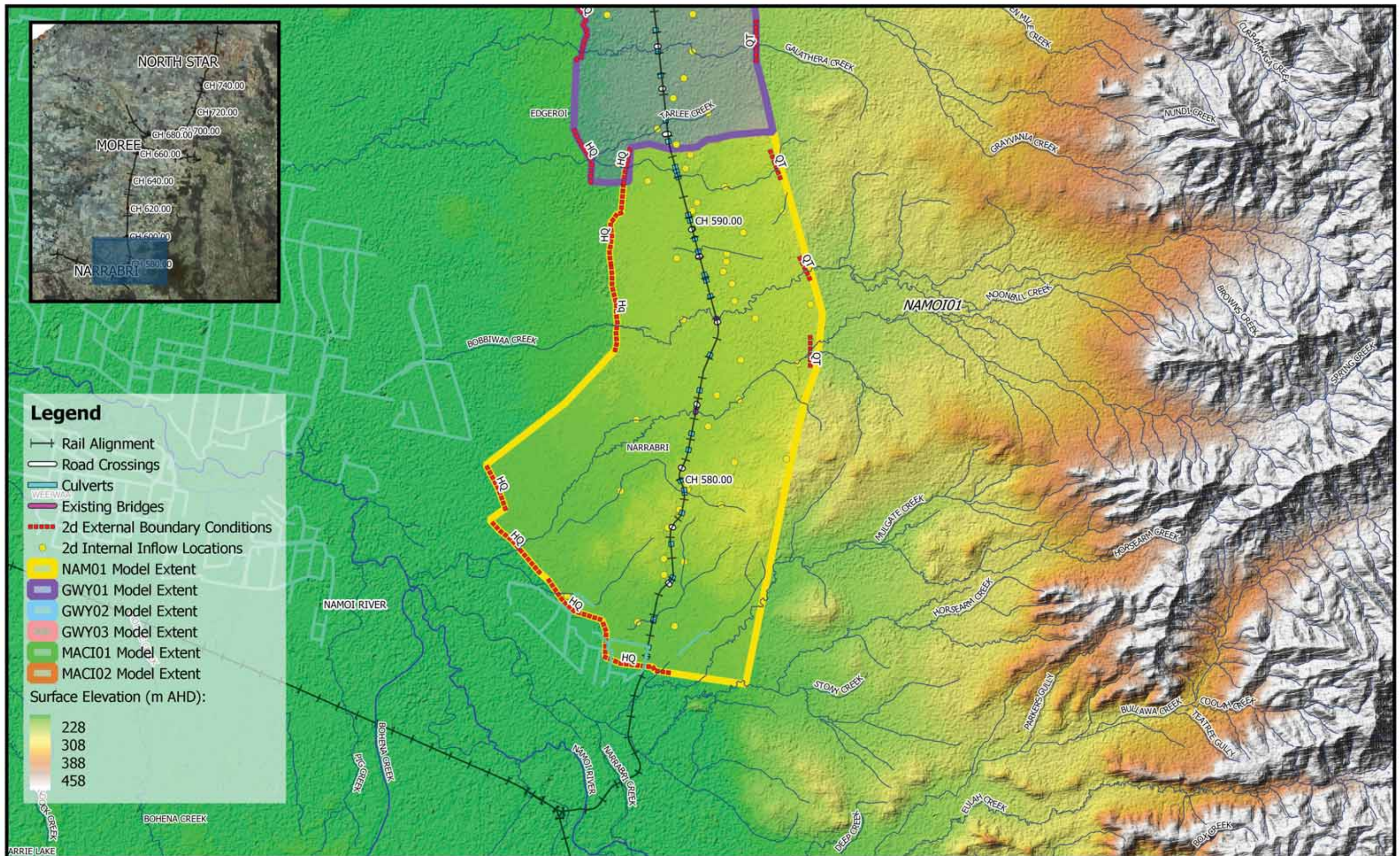












**Figure A 2.1**  
*TUFLOW Model Layout - NAM01*



