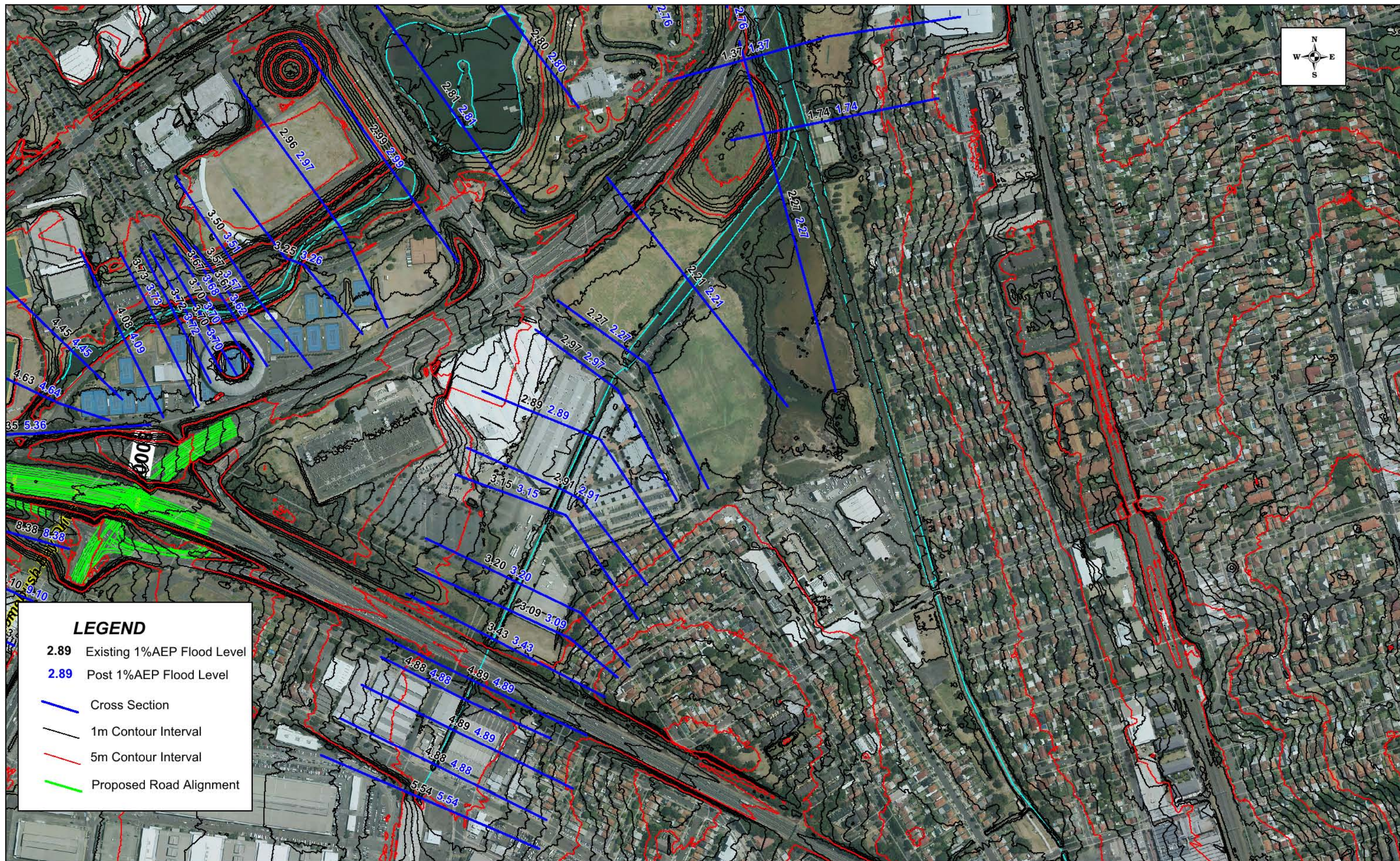


Appendix 4

Flood Levels - 1% AEP Design Event



DISCLAIMER

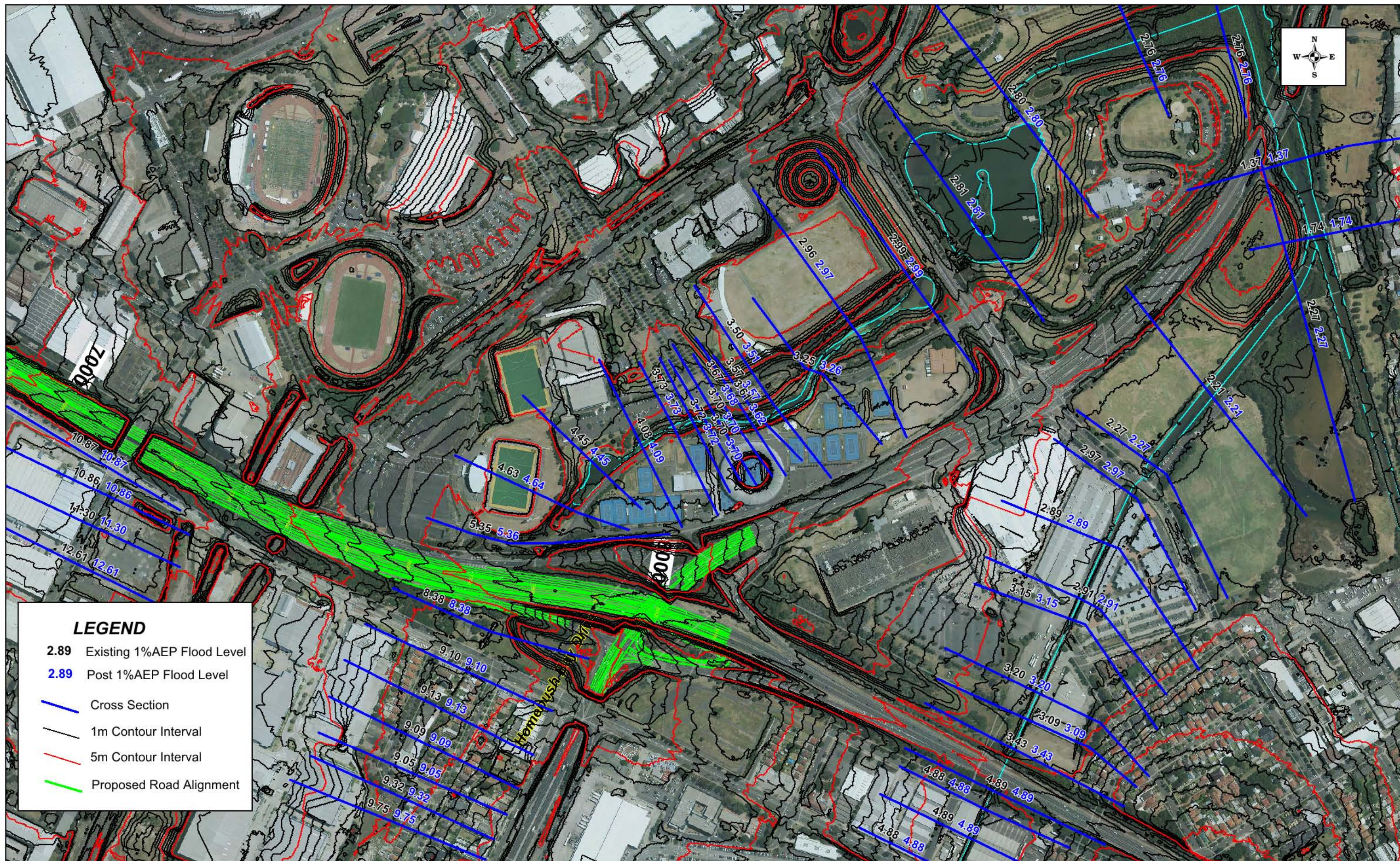
The accuracy of flood extents and hydraulic parameters shown on this map is limited to the level of accuracy of the survey data and modelling software available for flood modelling. The flood extents and hydraulic parameters on the map are only an indication of potential flooding conditions throughout the catchment for modelled design storm event and may vary from real flooding conditions.

0 100 200
metres



WestConnex EIS - Flooding Component

Figure G1: 1%AEP Flood Levels
Reach A - Chainage 8610



DISCLAIMER

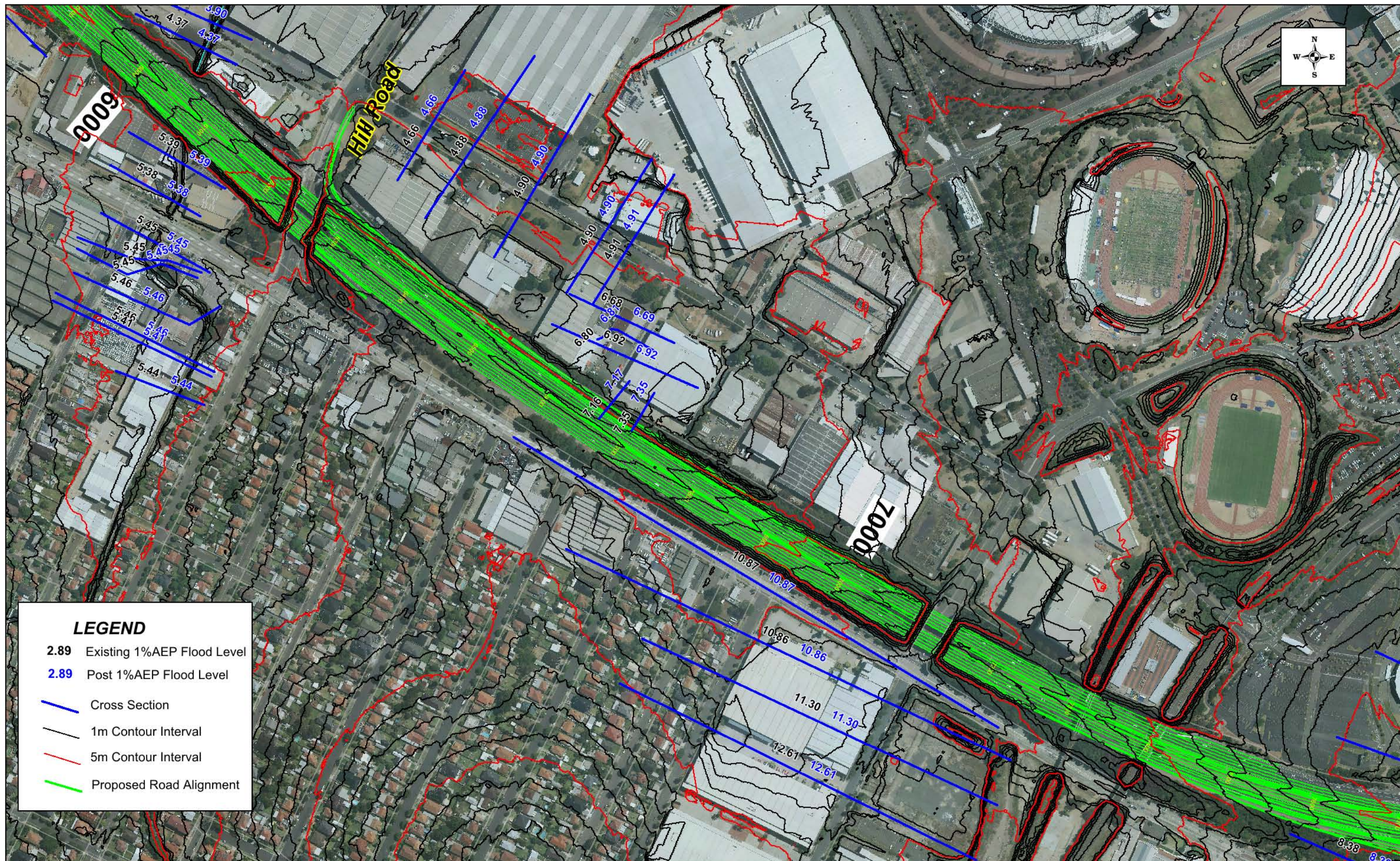
The accuracy of flood extents and hydraulic parameters shown on this map is limited to the level of accuracy of the survey data and modelling software available for flood modelling. The flood extents and hydraulic parameters on the map are only an indication of potential flooding conditions throughout the catchment for modelled design storm event and may vary from real flooding conditions.

0 100 200
metres



WestConnex EIS - Flooding Component

Figure G2: 1%AEP Flood Levels
Reach B - Chainage 7750

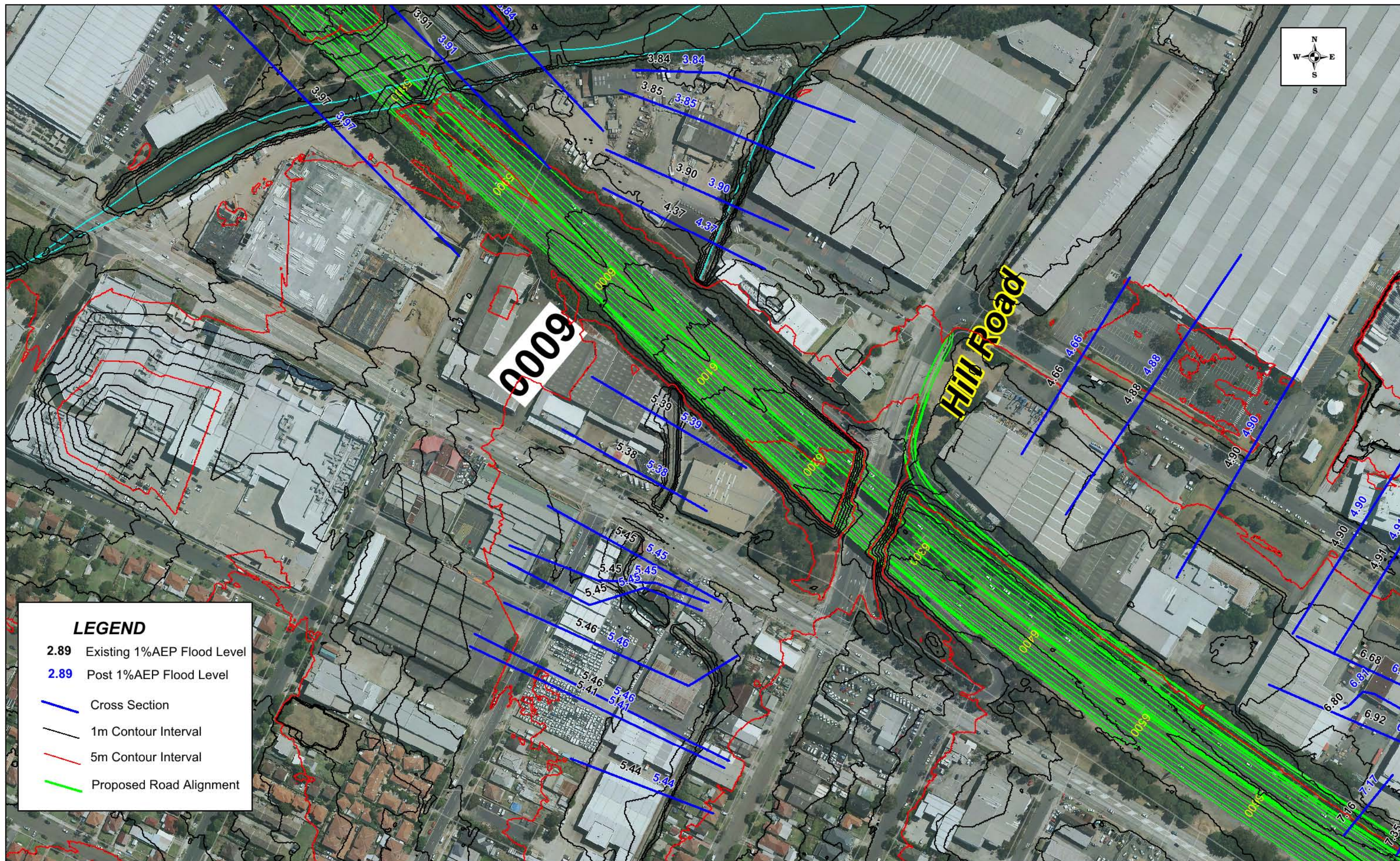


DISCLAIMER

The accuracy of flood extents and hydraulic parameters shown on this map is limited to the level of accuracy of the survey data and modelling software available for flood modelling. The flood extents and hydraulic parameters on the map are only an indication of potential flooding conditions throughout the catchment for modelled design storm event and may vary from real flooding conditions.

WestConnex EIS - Flooding Component

Figure G3: 1%AEP Flood Levels
Reach C - Chainage 6950



DISCLAIMER

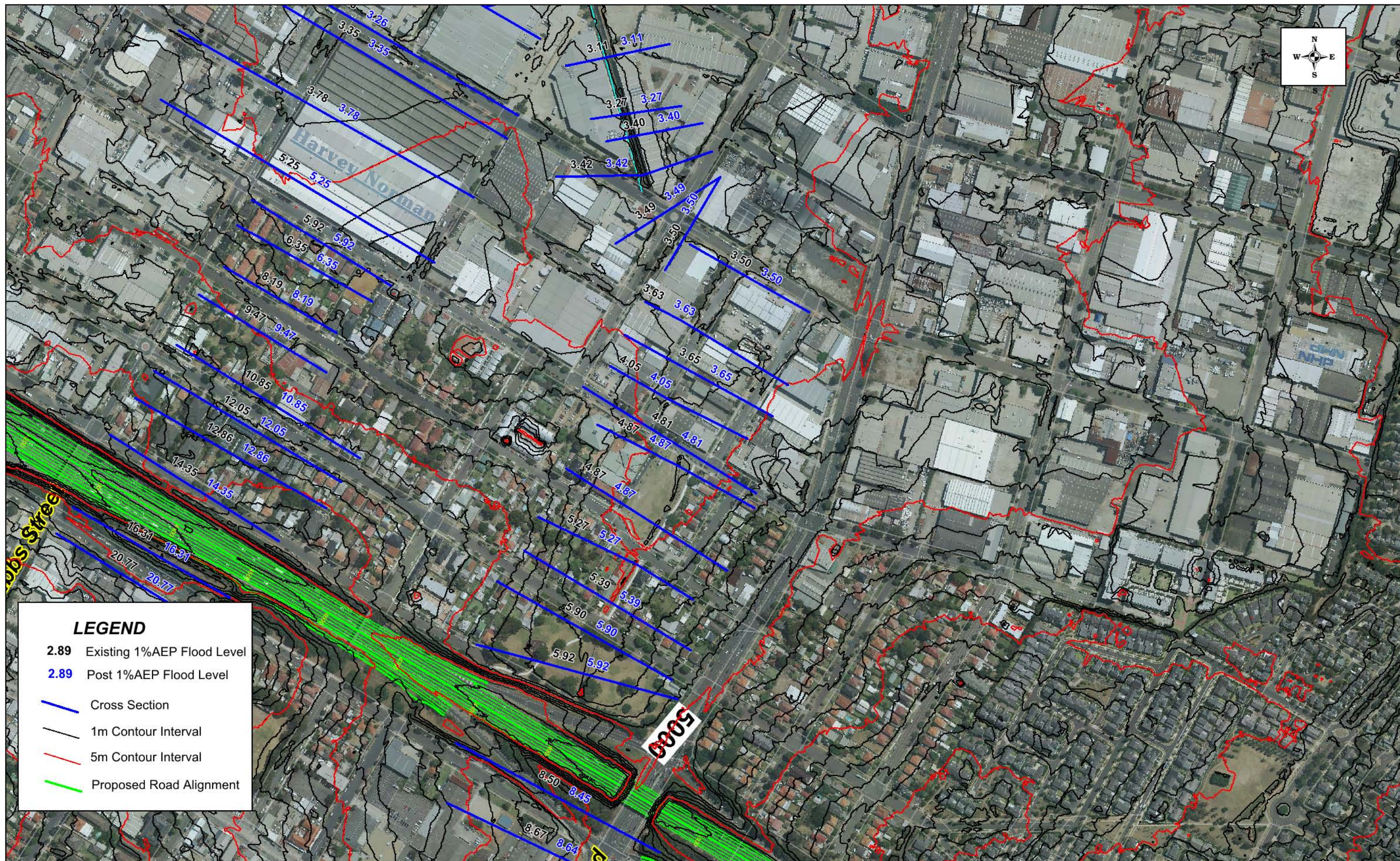
The accuracy of flood extents and hydraulic parameters shown on this map is limited to the level of accuracy of the survey data and modelling software available for flood modelling. The flood extents and hydraulic parameters on the map are only an indication of potential flooding conditions throughout the catchment for modelled design storm event and may vary from real flooding conditions.

0 50 100
metres



WestConnex EIS - Flooding Component

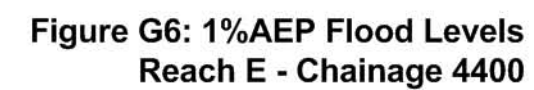
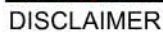
Figure G4: 1%AEP Flood Levels
Haslams Creek Tributary - Chainage 6100

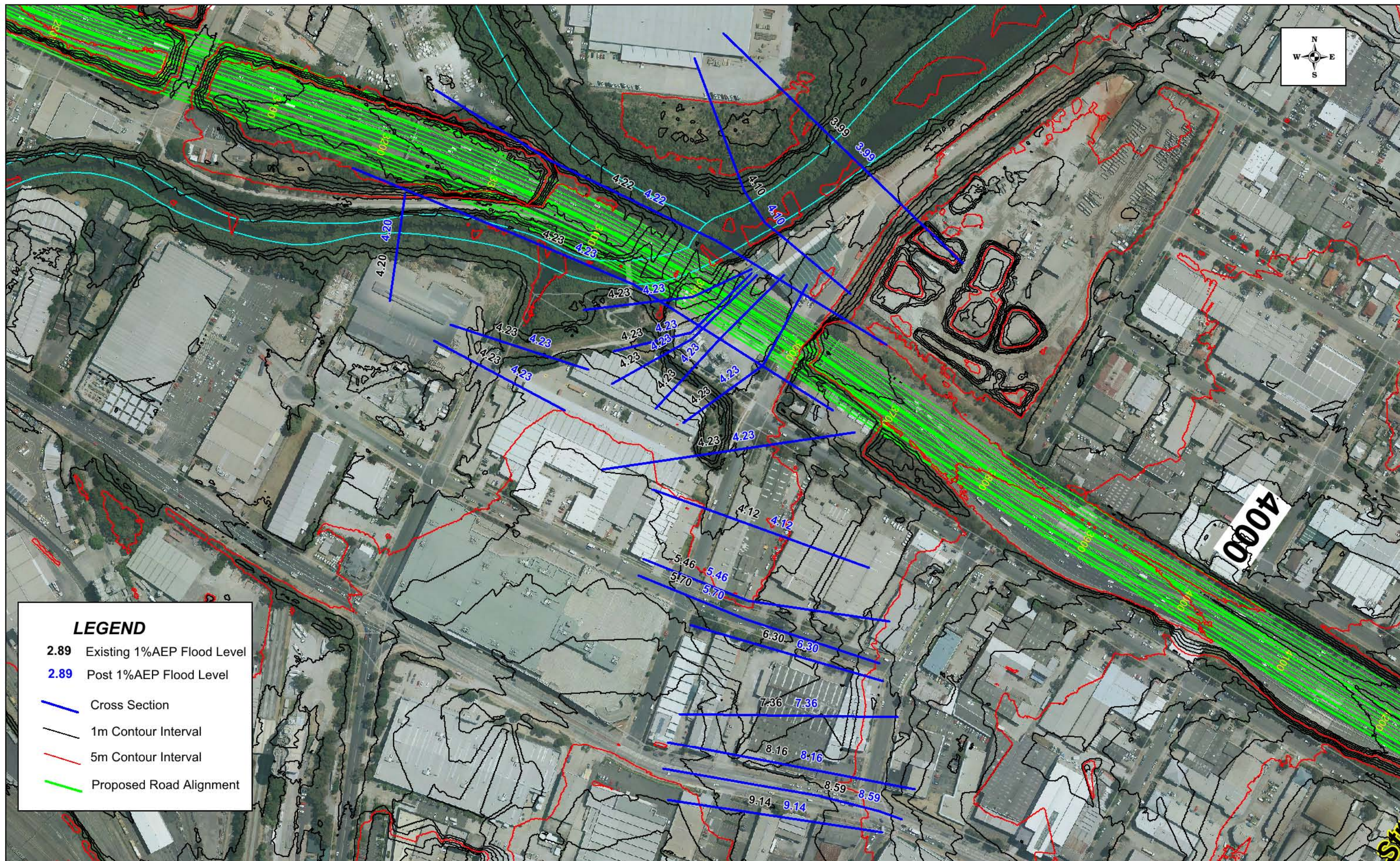


DISCLAIMER

The accuracy of flood extents and hydraulic parameters shown on this map is limited to the level of accuracy of the survey data and modelling software available for flood modelling. The flood extents and hydraulic parameters on the map are only an indication of potential flooding conditions throughout the catchment for modelled design storm event and may vary from real flooding conditions.







DISCLAIMER

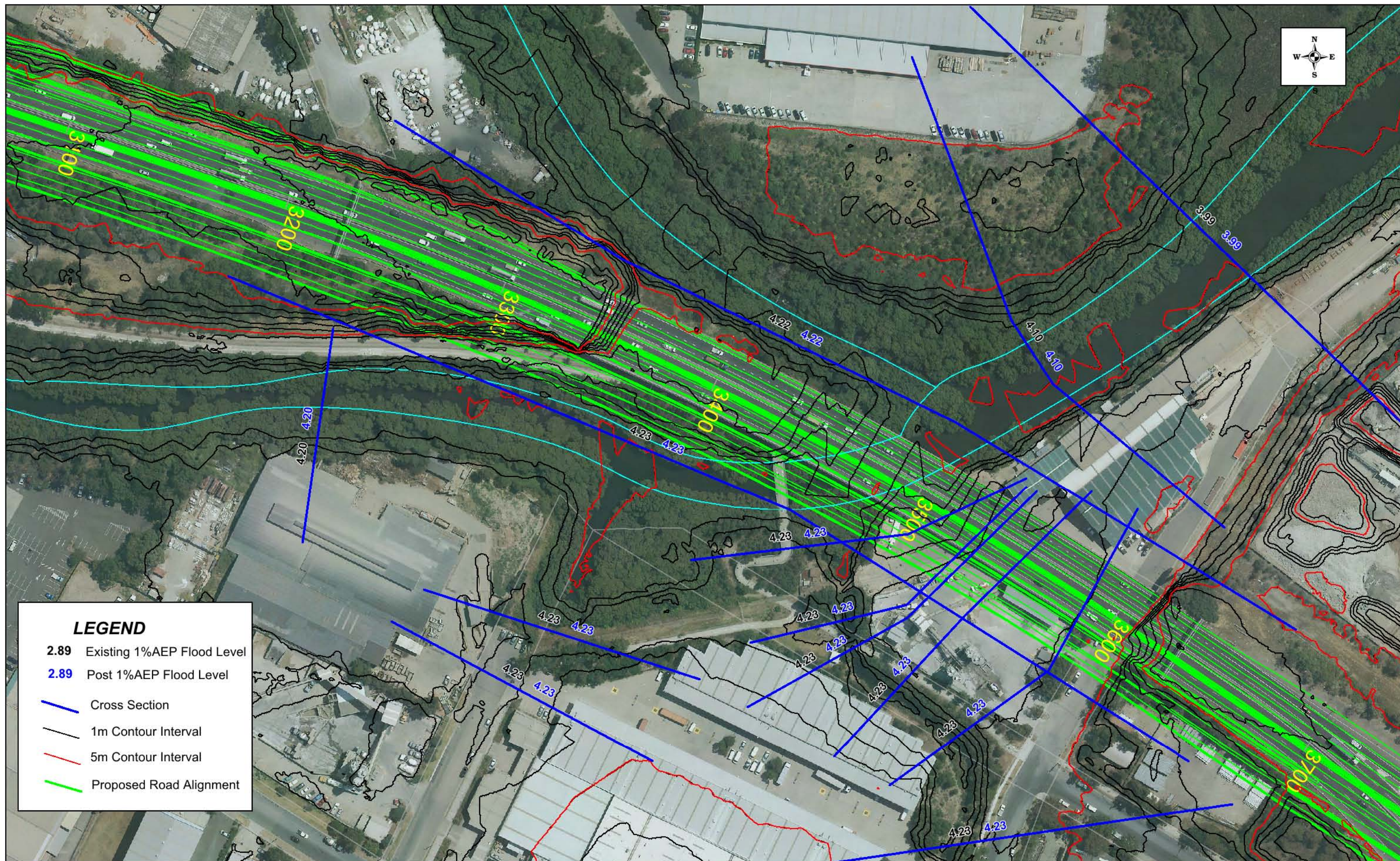
The accuracy of flood extents and hydraulic parameters shown on this map is limited to the level of accuracy of the survey data and modelling software available for flood modelling. The flood extents and hydraulic parameters on the map are only an indication of potential flooding conditions throughout the catchment for modelled design storm event and may vary from real flooding conditions.

0 75 150
metres



WestConnex EIS - Flooding Component

Figure G7: 1%AEP Flood Levels
Reach F - Chainage 3400



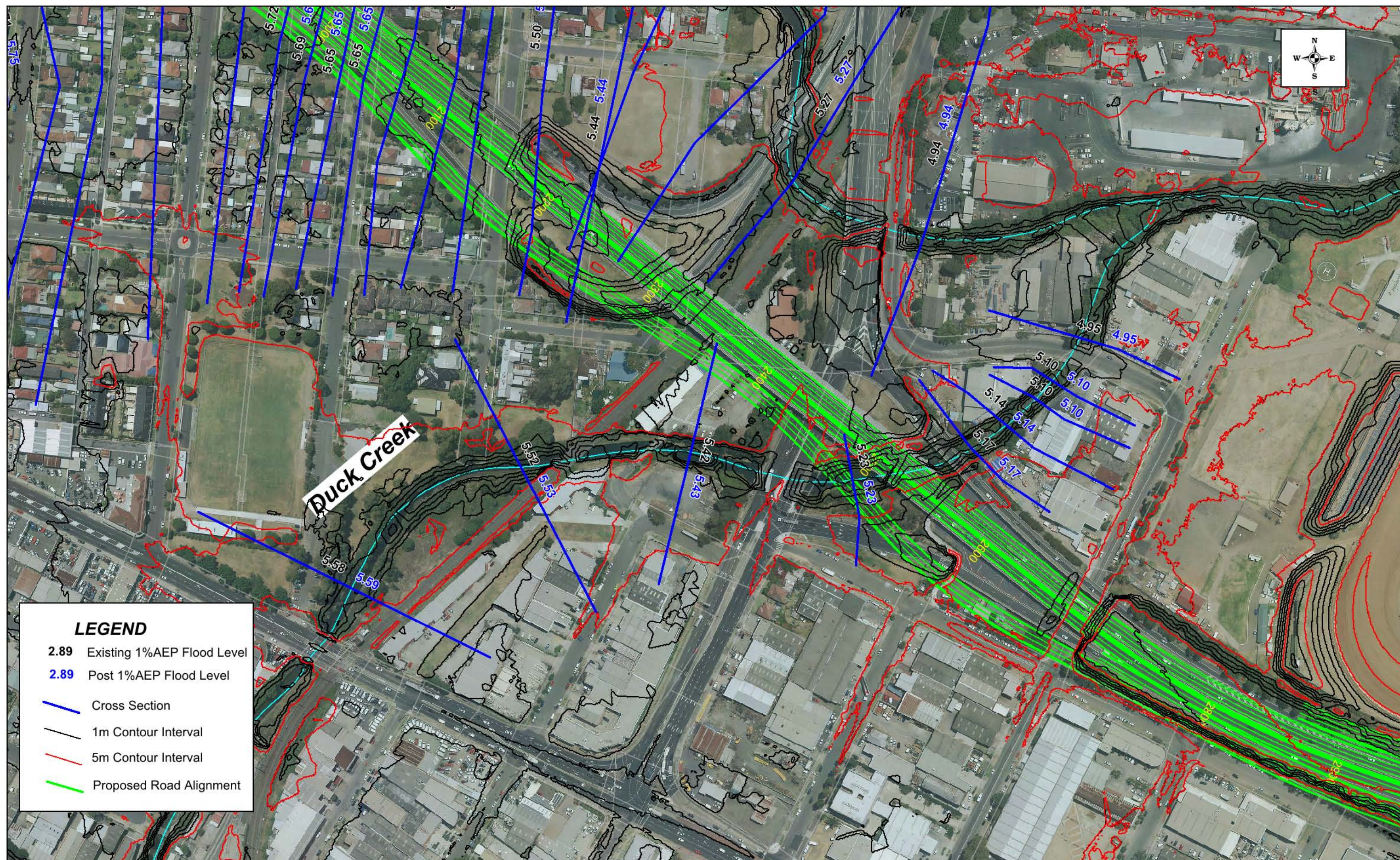
DISCLAIMER

The accuracy of flood extents and hydraulic parameters shown on this map is limited to the level of accuracy of the survey data and modelling software available for flood modelling. The flood extents and hydraulic parameters on the map are only an indication of potential flooding conditions throughout the catchment for modelled design storm event and may vary from real flooding conditions.

WestConnex EIS - Flooding Component



Figure G8: 1%AEP Flood Levels
Duck River - Chainage 3400



DISCLAIMER

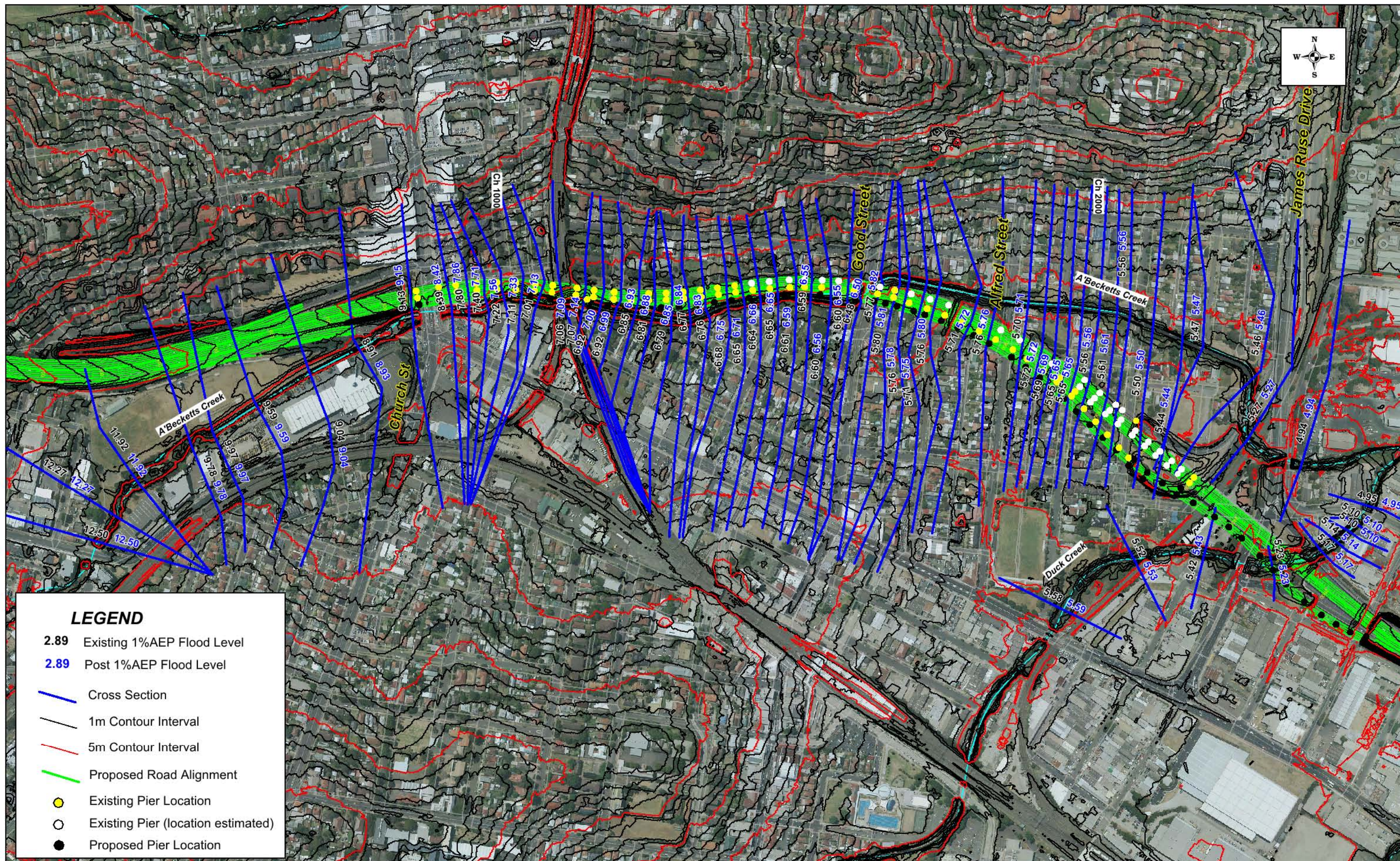
The accuracy of flood extents and hydraulic parameters shown on this map is limited to the level of accuracy of the survey data and modelling software available for flood modelling. The flood extents and hydraulic parameters on the map are only an indication of potential flooding conditions throughout the catchment for modelled design storm event and may vary from real flooding conditions.

0 50 100
metres



WestConnex EIS - Flooding Component

Figure G9: 1%AEP Flood Levels
Duck Creek - Chainage 2500



DISCLAIMER

The accuracy of flood extents and hydraulic parameters shown on this map is limited to the level of accuracy of the survey data and modelling software available for flood modelling. The flood extents and hydraulic parameters on the map are only an indication of potential flooding conditions throughout the catchment for modelled design storm event and may vary from real flooding conditions.

0 125 250
metres



WestConnex EIS - Flooding Component

Figure G10: 1%AEP Flood Levels
A'Becketts Creek - Chainage 1400