

Appendix 5

Velocities - 1% AEP Design Event

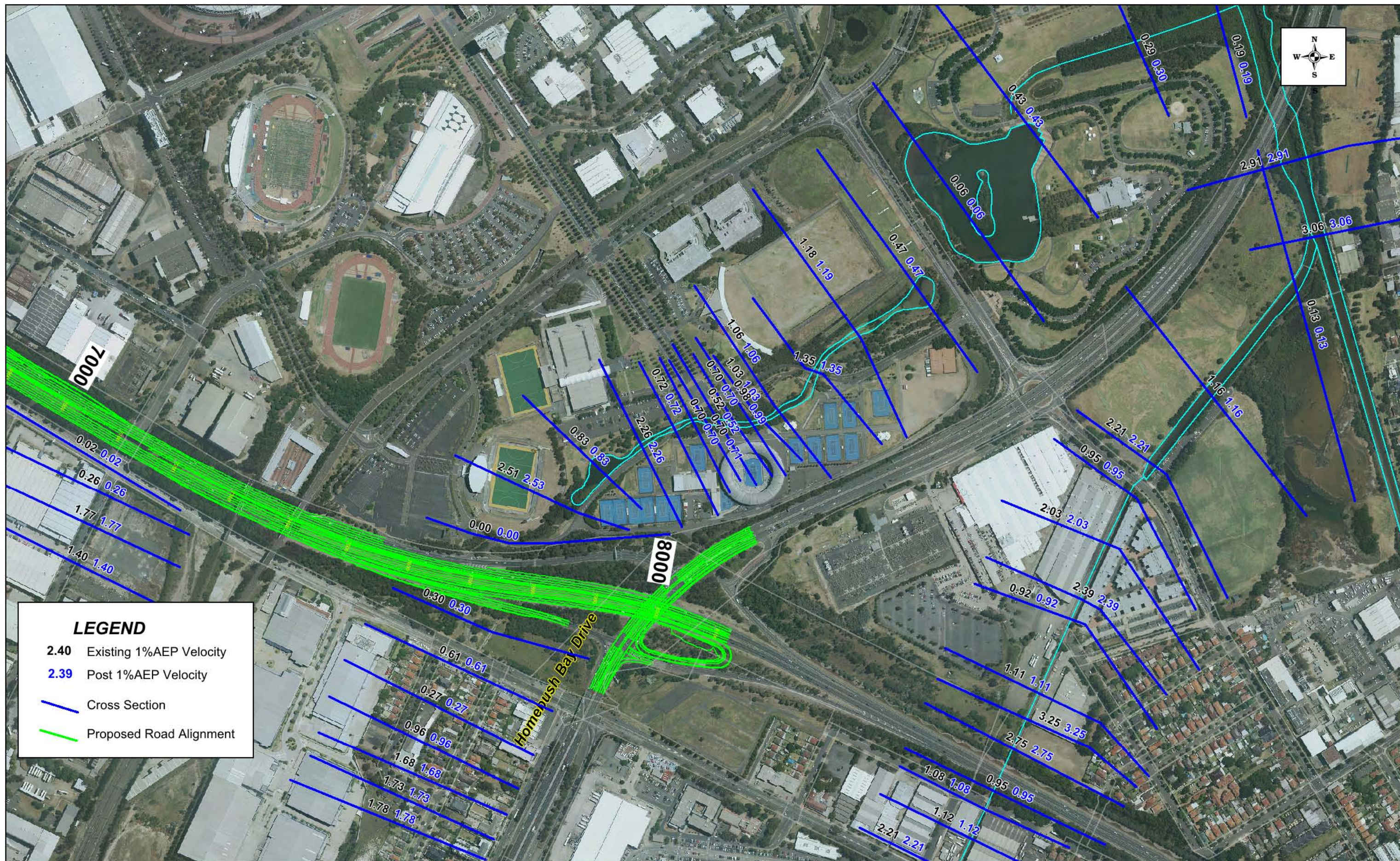


DISCLAIMER

The accuracy of flood extents and hydraulic parameters shown on this map is limited to the level of accuracy of the survey data and modelling software available for flood modelling. The flood extents and hydraulic parameters on the map are only an indication of potential flooding conditions throughout the catchment for modelled design storm event and may vary from real flooding conditions.

WestConnex EIS - Flooding Component

Figure H1: 1%AEP Average Velocity
Reach A - Chainage 8610





WestConnex EIS - Flooding Component

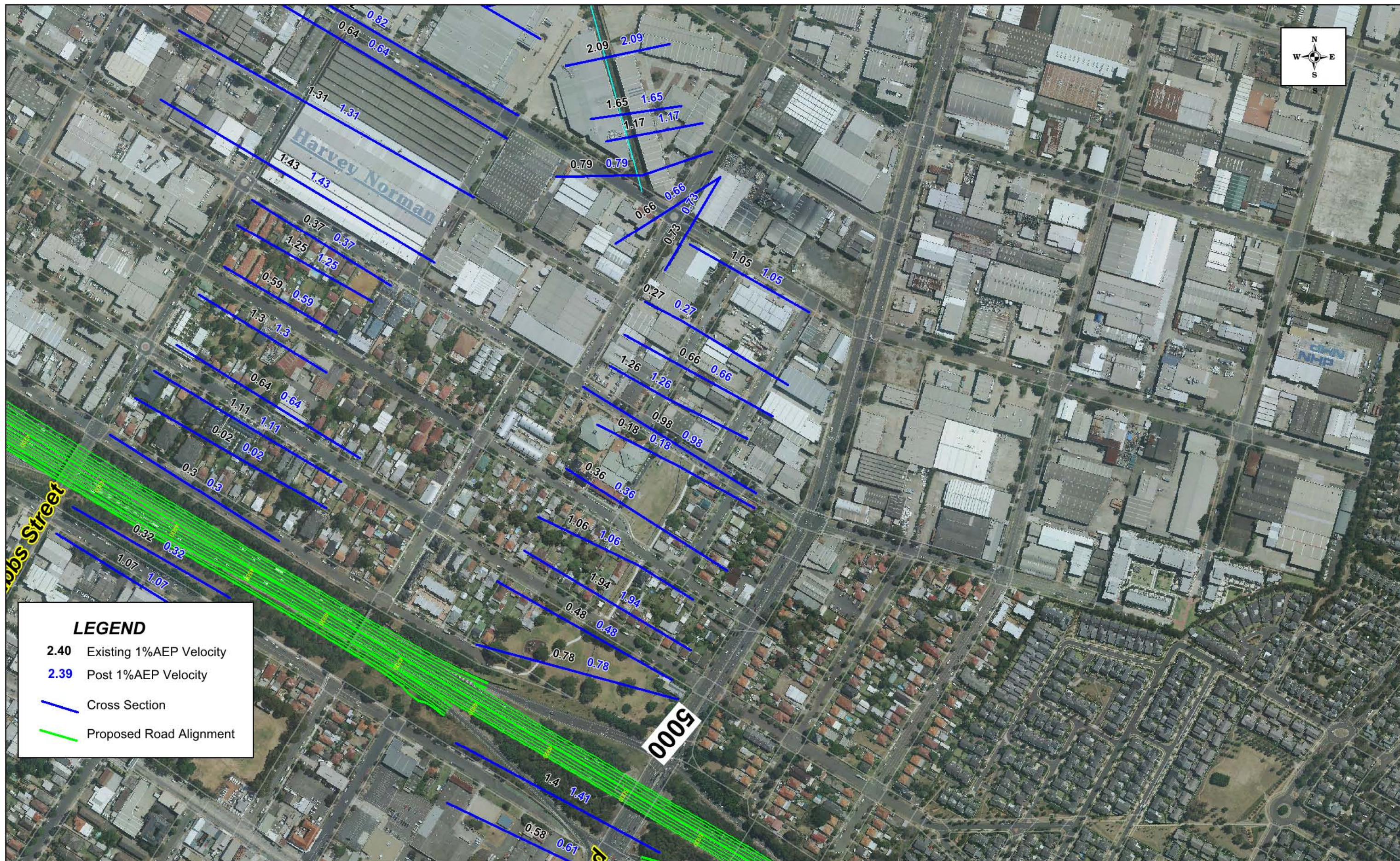
Figure H3: 1%AEP Average Velocities
Reach C - Chainage 6950





WestConnex EIS - Flooding Component

**Figure H4: 1%AEP Average Velocities
Haslams Creek Tributary - Chainage 6100**



DISCLAIMER

The accuracy of flood extents and hydraulic parameters shown on this map is limited to the level of accuracy of the survey data and modelling software available for flood modelling. The flood extents and hydraulic parameters on the map are only an indication of potential flooding conditions throughout the catchment for modelled design storm event and may vary from real flooding conditions.

WestConnex EIS - Flooding Component

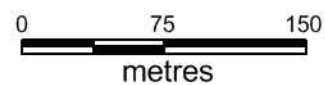
Figure H5: 1%AEP Average Velocities
Reach D - Chainage 4950





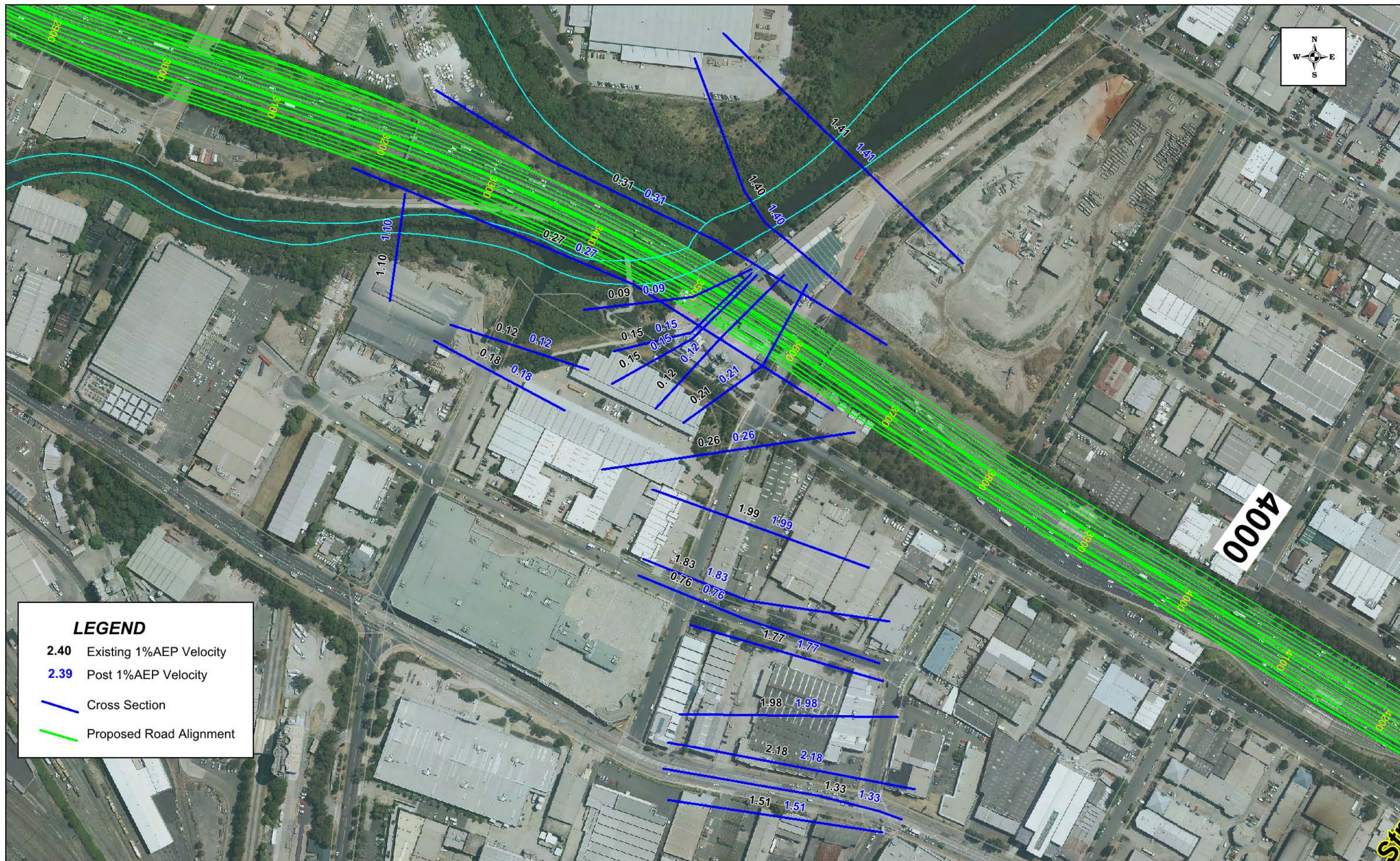
DISCLAIMER

The accuracy of flood extents and hydraulic parameters shown on this map is limited to the level of accuracy of the survey data and modelling software available for flood modelling. The flood extents and hydraulic parameters on the map are only an indication of potential flooding conditions throughout the catchment for modelled design storm event and may vary from real flooding conditions.



WestConnex EIS - Flooding Component

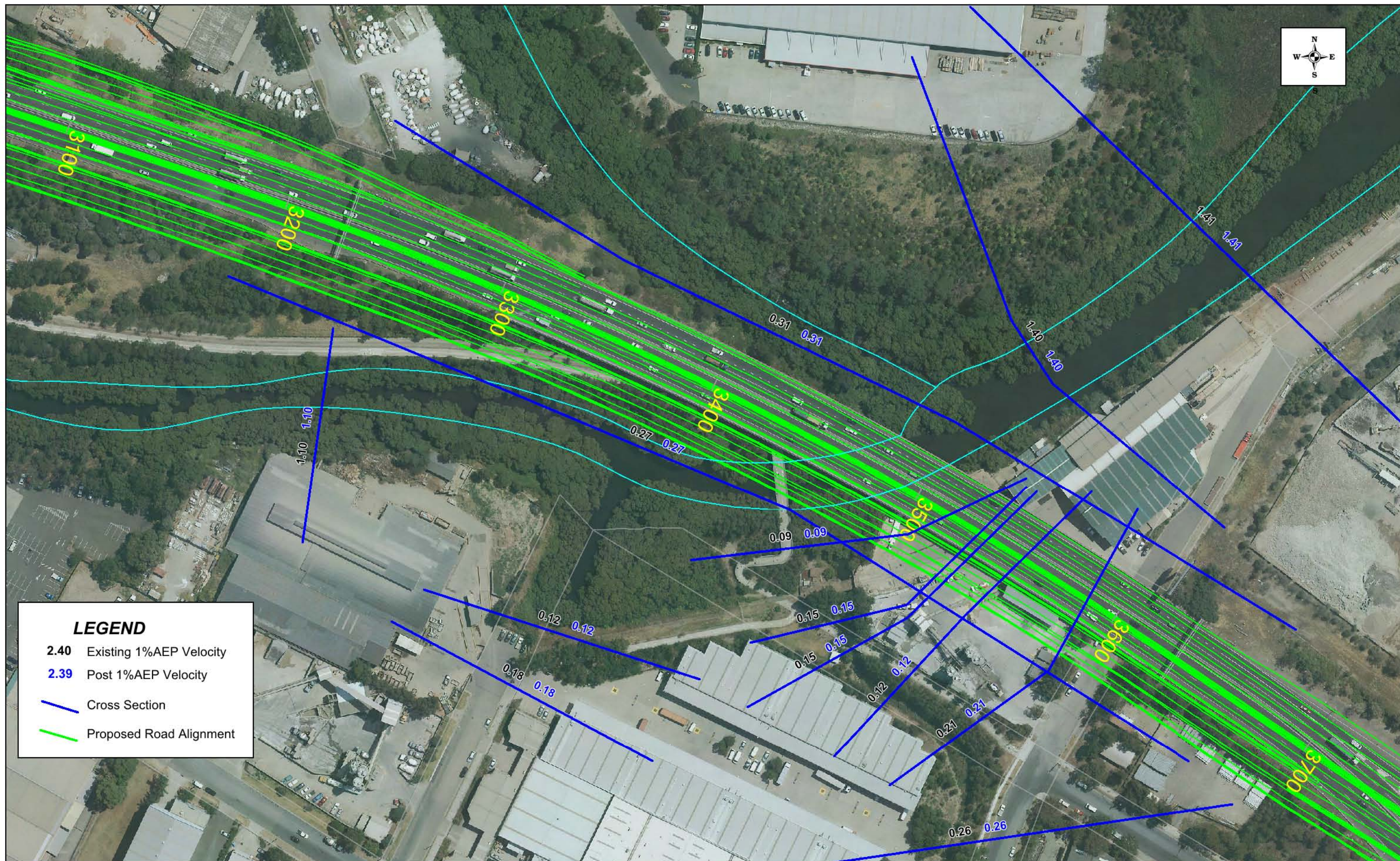
Figure H6: 1%AEP Average Velocities
Reach E - Chainage 4400



DISCLAIMER

The accuracy of flood extents and hydraulic parameters shown on this map is limited to the level of accuracy of the survey data and modelling software available for flood modelling. The flood extents and hydraulic parameters on the map are only an indication of potential flooding conditions throughout the catchment for modelled design storm event and may vary from real flooding conditions.





DISCLAIMER

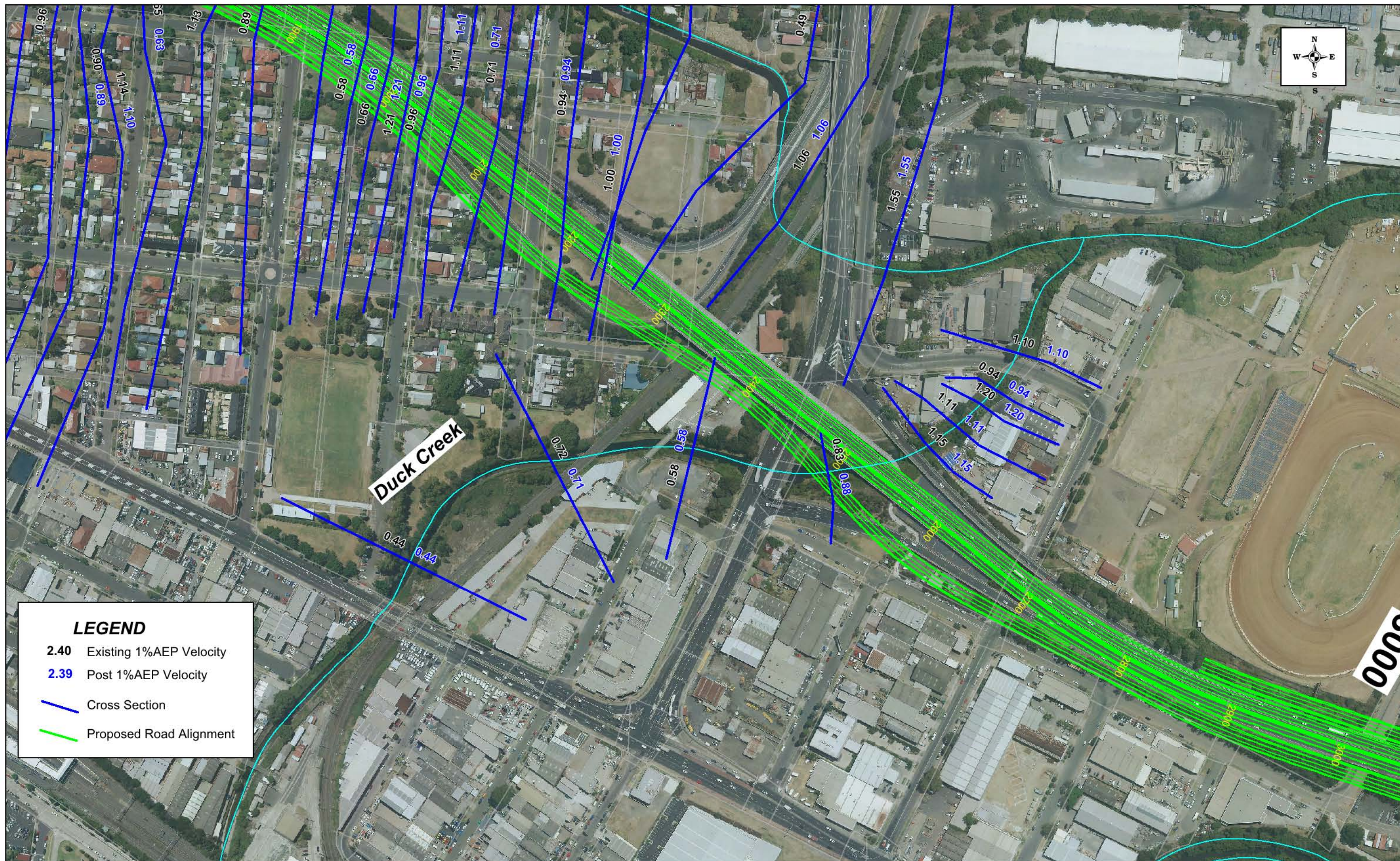
The accuracy of flood extents and hydraulic parameters shown on this map is limited to the level of accuracy of the survey data and modelling software available for flood modelling. The flood extents and hydraulic parameters on the map are only an indication of potential flooding conditions throughout the catchment for modelled design storm event and may vary from real flooding conditions.

0 25 50
metres



WestConnex EIS - Flooding Component

Figure H8: 1%AEP Average Velocities
Duck River - Chainage 3400



DISCLAIMER

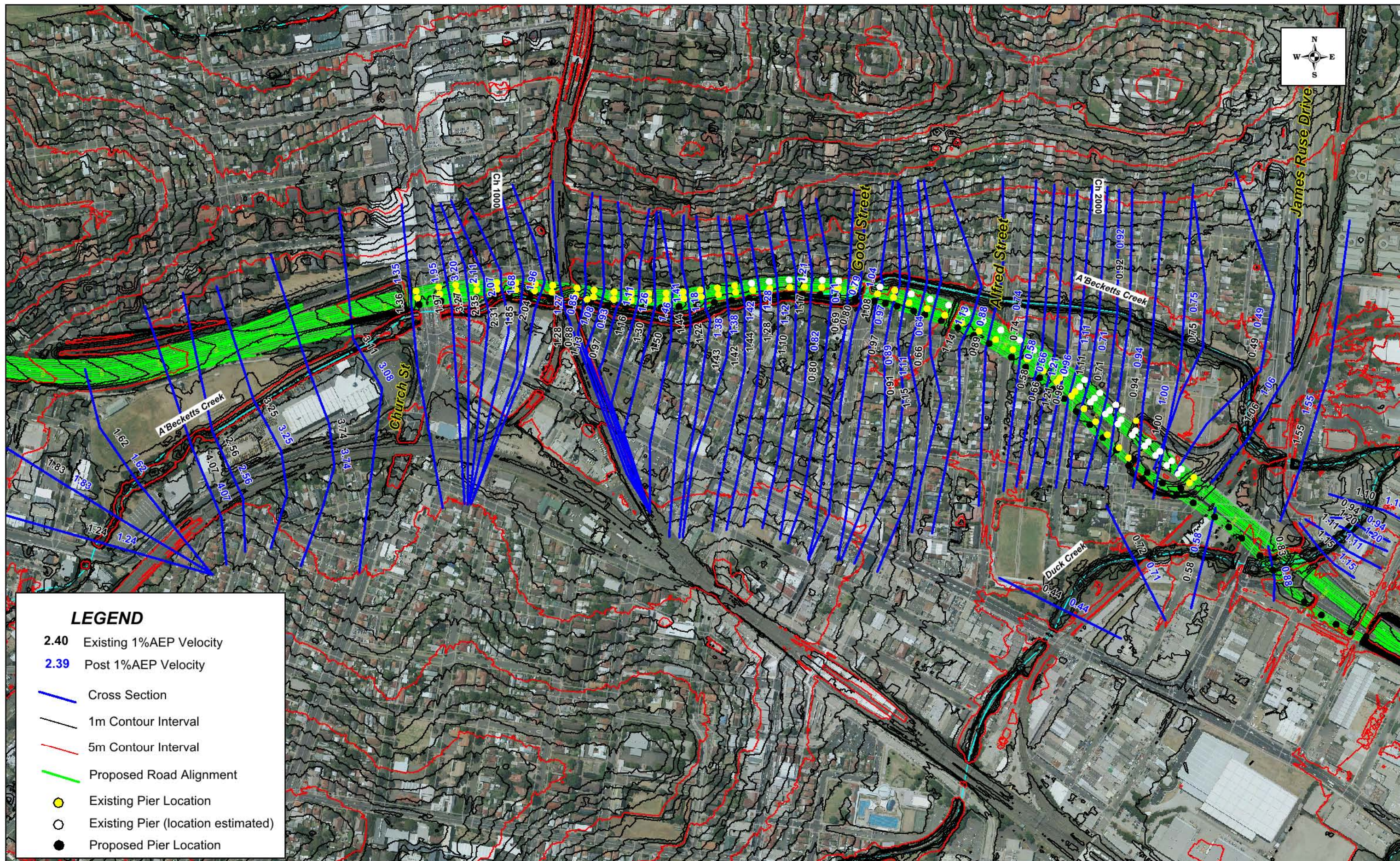
The accuracy of flood extents and hydraulic parameters shown on this map is limited to the level of accuracy of the survey data and modelling software available for flood modelling. The flood extents and hydraulic parameters on the map are only an indication of potential flooding conditions throughout the catchment for modelled design storm event and may vary from real flooding conditions.

0 75 150
metres



WestConnex EIS - Flooding Component

Figure H9: 1%AEP Average Velocities
Duck Creek - Chainage 2500



WestConnex EIS - Flooding Component

Figure H10: 1%AEP Average Velocities
A'Becketts Creek - Chainage 1400

