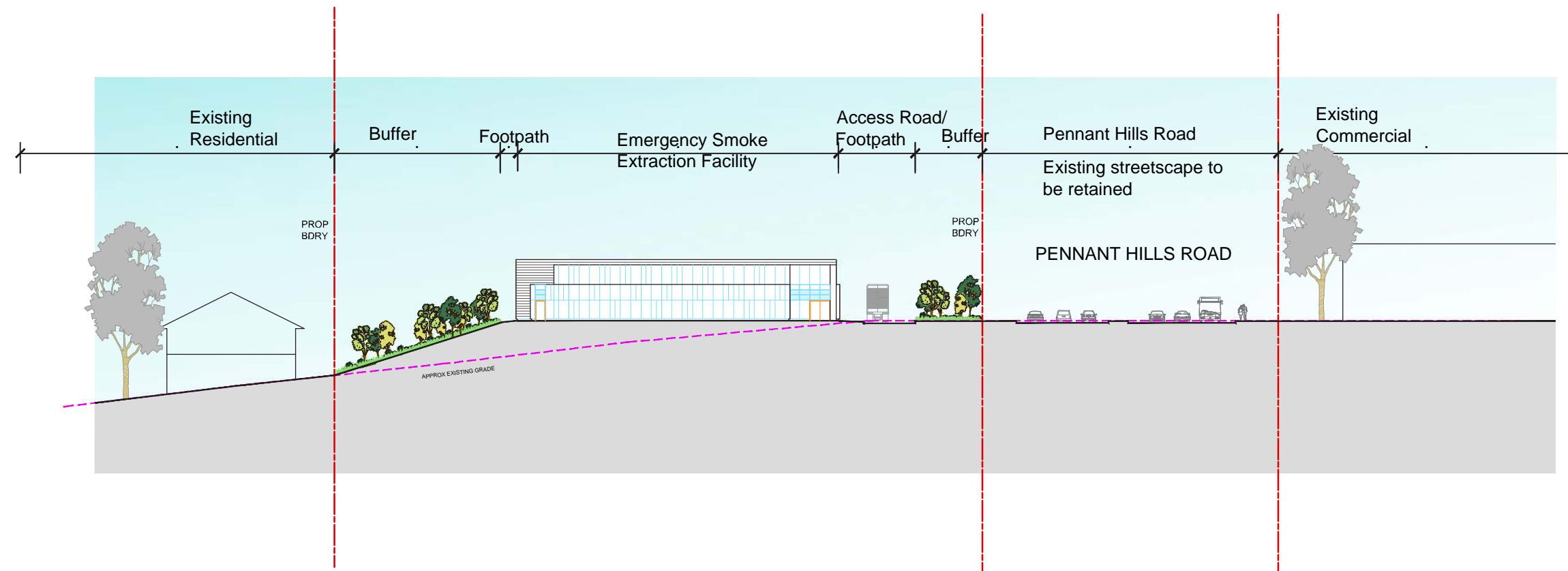


8.0 Landscape Design



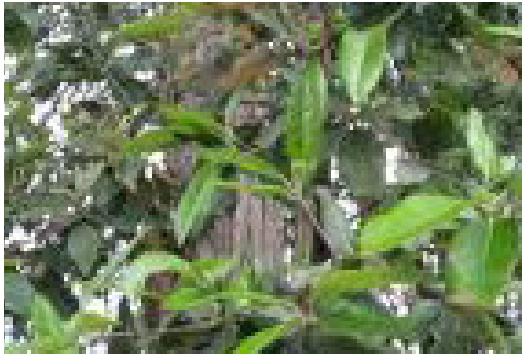
8.0 Landscape Design

Trelawney Street Tunnel Support Facility Planting Palette

TRELAWNEY STREET TUNNEL SUPPORT FACILITY INDICATIVE PLANTING SCHEDULE						
SYDNEY BLUE GUM HIGH FOREST AND SYDNEY URPENTINE - IRONBARK FOREST REGENERATION SCREEN PLANTING						
Botanical Name	Common Name	Mature Height	Mature Width	Spacing	Pot Size	Staking
Trees						
<i>Eucalyptus globoidea</i>	White Stringybark	30-45m	20m	As Shown	75L	2 x (50 x 50 x 1800)
<i>Eucalyptus paniculata</i>	Grey Ironbark	30-45m	20m	As Shown	75L	2 x (50 x 50 x 1800)
<i>Eucalyptus pilularis</i>	Blackbutt	30-45m	20m	As Shown	75L	2 x (50 x 50 x 1800)
<i>Eucalyptus saligna</i>	Sydney Blue Gum	30-45m	20m	As Shown	75L	2 x (50 x 50 x 1800)
<i>Syncarpia glomulifera</i>	Turpentine	30-45m	20m	As Shown	75L	2 x (50 x 50 x 1800)

Shrubs and Groundcovers						
<i>Acacia longifolia</i>	Long leaved Wattle	7-8m	3m	As Shown	300mm	
<i>Banksia integrifolia</i>	Coast Banksia	6m	3m	As Shown	300mm	
<i>Bursaria spinosa</i>	Sweet Bursaria	2-6m	3m	As Shown	300mm	
<i>Callistemon 'CaptianCook'</i>	Bottlebrush	3-5m	1.5m	As Shown	300mm	
<i>Callistemon viminalis</i>	Weeping Bottlebrush	3-5m	1.5m	As Shown	300mm	
<i>Dianella 'Breeze'</i>	Flax-lily	0.3m	0.3m	6/m²	150mm	
<i>Grevillea 'RobynGordon'</i>	'Robyn Gordon'	1-1.5m	1m	As Shown	300mm	
<i>Hakea dactryloides</i>	Broad-leaved Hakea	1-2m	1m	As Shown	300mm	
<i>Leucopogon juniperinus</i>	Bearded Heath	0.5m	1m	4/m²	300mm	
<i>Lomandra longifolia</i>	Mat-rush	1m	1m	4/m²	150mm	
<i>Hardenbergia violacea</i>	Purple coral pea	.75m	1.5m	4/m²	150mm	
<i>Lomandra 'Tanika'</i>	Basket Grass	0.6m	0.6m	6/m²	150mm	
<i>Persooni aliniaris</i>	Narrow-leaved Geebung	1.5-4m	2m	As Shown	150mm	
<i>Themeda australis</i>	Kangaroo Grass	0.4-0.8m	1m	6/m²	150mm	

STREET TREE PLANTING						
BotanicalName	Common Name	Mature Height	Mature Width	Spacing	Pot Size	Staking
Trees						
<i>Eucalyptus pilularis</i>	Blackbutt	30-45m	20m	As Shown	75L	2 x (50 x 50 x 1800)
<i>Lophostemon confertus</i>	Brushbox	30-45m	20m	As Shown	75L	2 x (50 x 50 x 1800)



Syncarpia glomulifera



Grevillea sp.



Callistemon citrinus 'Captian Cook'.



Hardenbergia violacea



Eucalyptus globoidea



Banksia integrifolia



Hakea dactryloides



Dianella caerulea















8.0 Landscape Design

8.13 Landscape Strategy - Northern Ventilation Facility

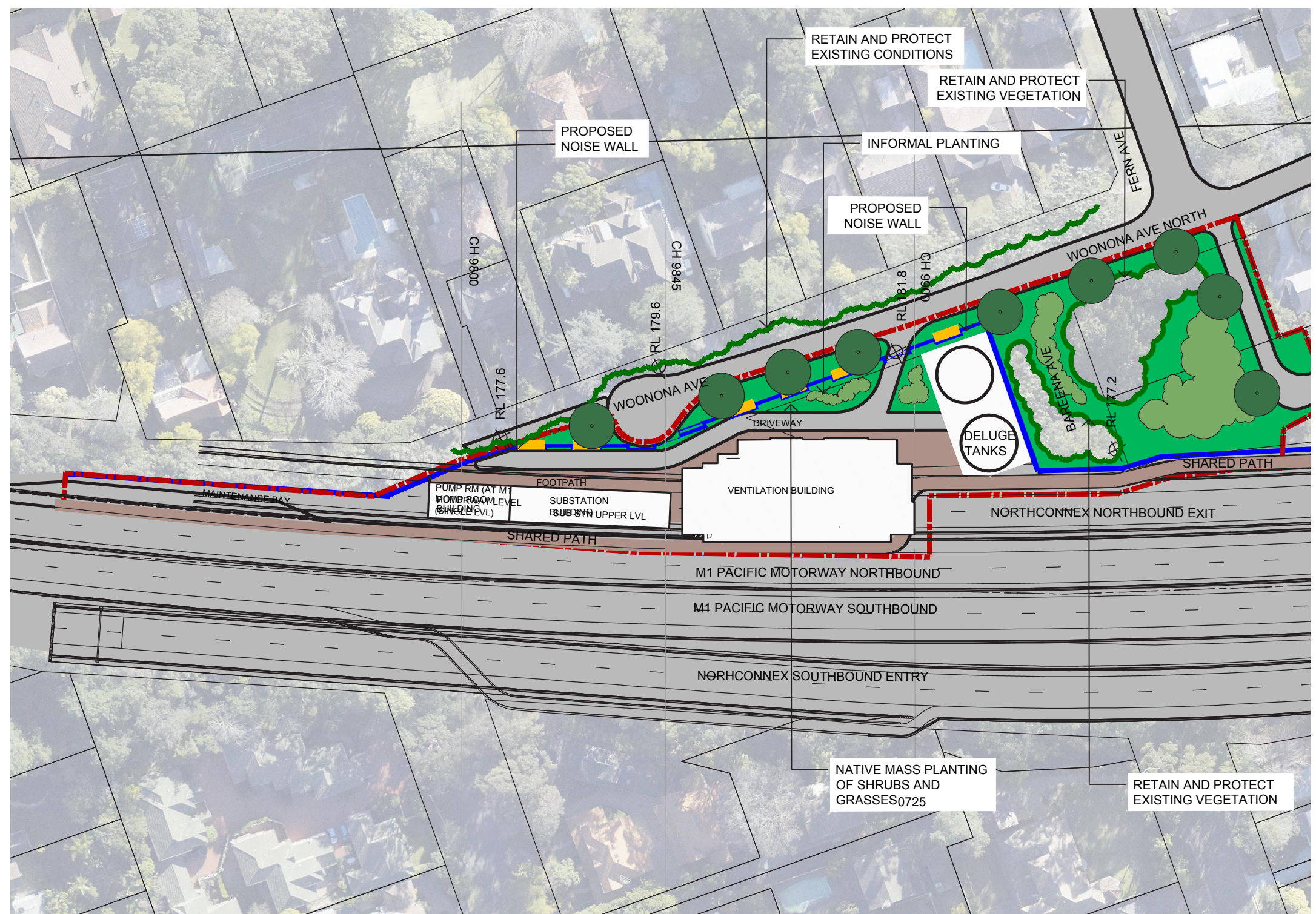
Typical Strategy

- Incorporate a landscape buffer zone around the site;
- Enhance the integrity of the proposed service/access road through street tree plantings;
- Screen the proposed buildings from surrounding neighbourhood;
- Screen the proposed structures and operational activities from residential properties to the west through mass tree and shrub planting;
- Create amenity and shade for staff and users of the buildings and improve overall visual amenity on the site;
- Create a robust, low maintenance landscape that is responsive to sight lines, safety and impacts from operational activities; and
- Use of native species to reinforce the suburban bushland character of the immediate setting of the area.
- Retain and protect existing vegetation where possible.

KEY

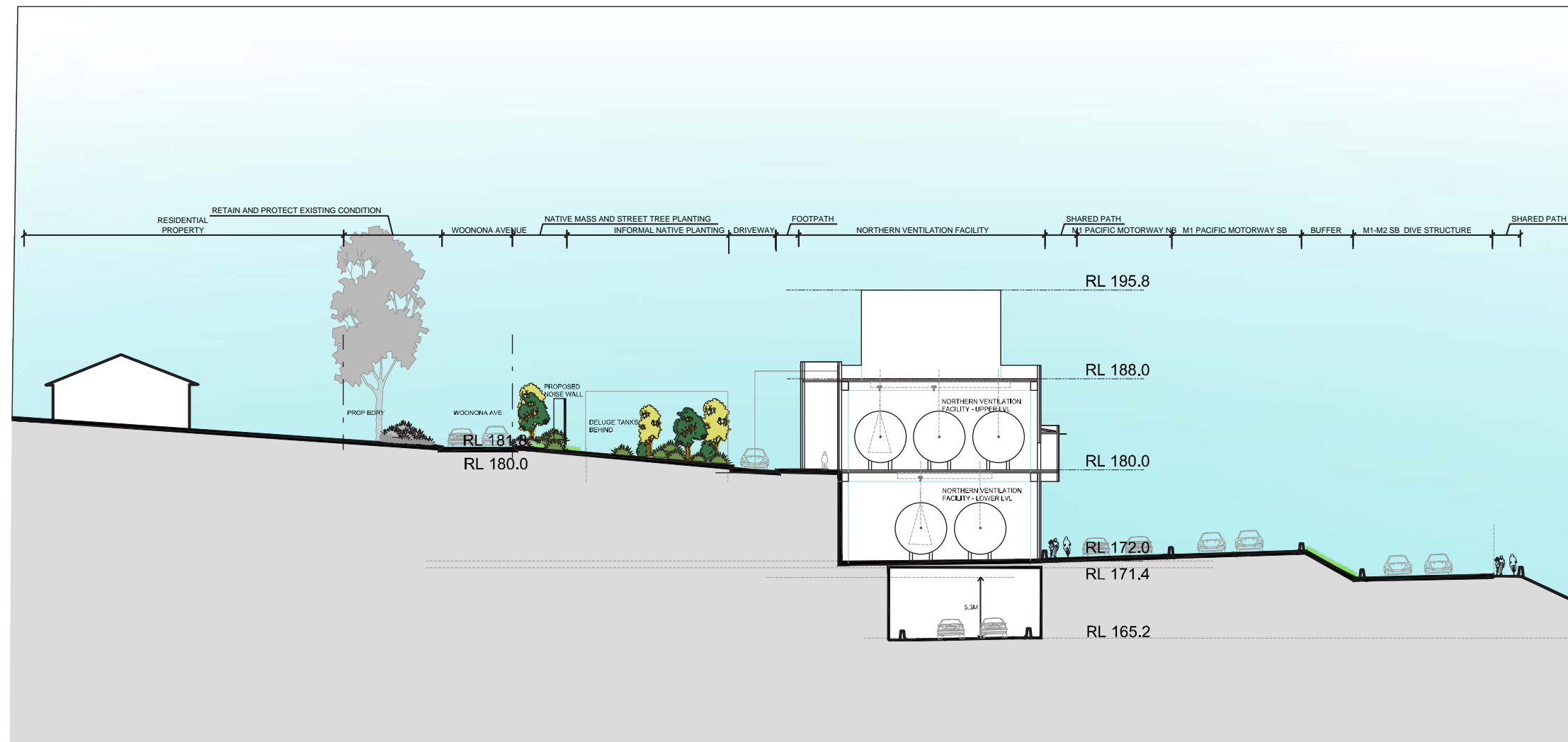
-  PROJECT BOUNDARY
-  PROPOSED NOISE WALL
-  EXISTING NOISE WALL
-  PROPOSED RETAINING WALL
-  EXISTING VEGETATION
-  NATIVE MASS PLANTING OF SHRUBS AND GRASSES
-  LOW NATIVE GRASSES
-  INFORMAL NATIVE TREE PLANTING
-  FEATURE MIXED SHRUBS
-  STREET TREE
-  FEATURE TREE
-  NATIVE FEATURE TREE
-  EXISTING TREE TO BE RETAINED AND PROTECTED
-  RAIN GARDENS WHERE NATURAL FLOWS ENTER COLLECTION SYSTEM

0 10 20 30 40 50m
SCALE 1:1000@A3



M1-M2-5000-DR-UD-0724
NORTHERN VENTILATION FACILITY - LANDSCAPE CONCEPT PLAN

8.0 Landscape Design



8.0 Landscape Design

Northern Ventilation Facility Planting Palette

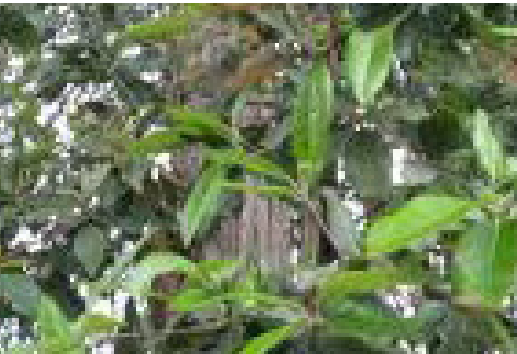
NORTH VENTILATION FACILITY INDICATIVE PLANTING SCHEDULE						
SYDNEY BLUE GUM HIGH FOREST AND SYDNEY TURPENTINE - IRON BARK FOREST REGENERATION SCREEN PLANTING						
Botanical Name	Common Name	Mature Height	Mature Width	Spacing	Pot Size	Staking
Trees						
<i>Angophora costata</i>	Smoothed Barked Apple	30-45m	20m	As shown	75L	2 x (50 x 50 x 1800)
<i>Backhousia myrtifolia</i>	Grey Myrtle	10-25m	15m	As shown	75L	2 x (50 x 50 x 1800)
<i>Eucalyptus globoidea</i>	White Stringybark	30-45m	20m	As Shown	75L	2 x (50 x 50 x 1800)
<i>Eucalyptus paniculata</i>	Grey Ironbark	30-45m	20m	As Shown	75L	2 x (50 x 50 x 1800)
<i>Eucalyptus pilularis</i>	Blackbutt	30-45m	20m	As Shown	75L	2 x (50 x 50 x 1800)
<i>Eucalyptus saligna</i>	Sydney Blue Gum	30-45m	20m	As Shown	75L	2 x (50 x 50 x 1800)
<i>Syncarpia glomulifera</i>	Turpentine	30-45m	20m	As Shown	75L	2 x (50 x 50 x 1800)
Shrubs and Groundcovers						
<i>Acacia longifolia</i>	Long Leaved Wattle	7-8m	3m	As Shown	300mm	
<i>Banksia ericifolia</i>	Heath-leaved Banksia	6m	3m	As Shown	300mm	
<i>Callistemon 'CaptianCook'</i>	Bottlebrush	3-5m	1.5m	As Shown	300mm	
<i>Elaeocarpus reticulatus</i>	Blueberry Ash	8-12m	5-8m	As Shown	300mm	
<i>Doryanth clearing</i>	Gymea Lily	2.5m	1.5m	As Shown	300mm	
<i>Dianella caeruleavar caerulea</i>	Flax-lily	0.3m	0.3m	6/m ²	150mm	
<i>Grevillea 'Robyn Gordon'</i>	'RobynGordon'	1-1.5m	1m	As Shown	300mm	
<i>Hakea dactryloides</i>	Broad-leaved Hakea	1-2m	1m	As Shown	300mm	
<i>Lomandra longifolia</i>	Mat-rush	1m	1m	4/m ²	150mm	
<i>Hardenbergia violacea</i>	Purple Ccoral Pea	.75m	1.5m	4/m ²	150mm	
<i>Persoonia liniaris</i>	Narrow-leaved Geebung	1.5-4m	2m	As shown	150mm	
<i>Themeda australis</i>	Kangeroo Grass	0.4-0.8m	1m	6/m ²	150mm	
<i>Syzygium smithii</i>	Lilly Pilly	8-15m	5-8m	As Shown	300mm	



Eucalyptus paniculata



Eucalyptus saligna



Syncarpia glomulifera



Syzygium smithii



Elaeocarpus reticulatus



Hakea dactryloides



Lomandra hystrix



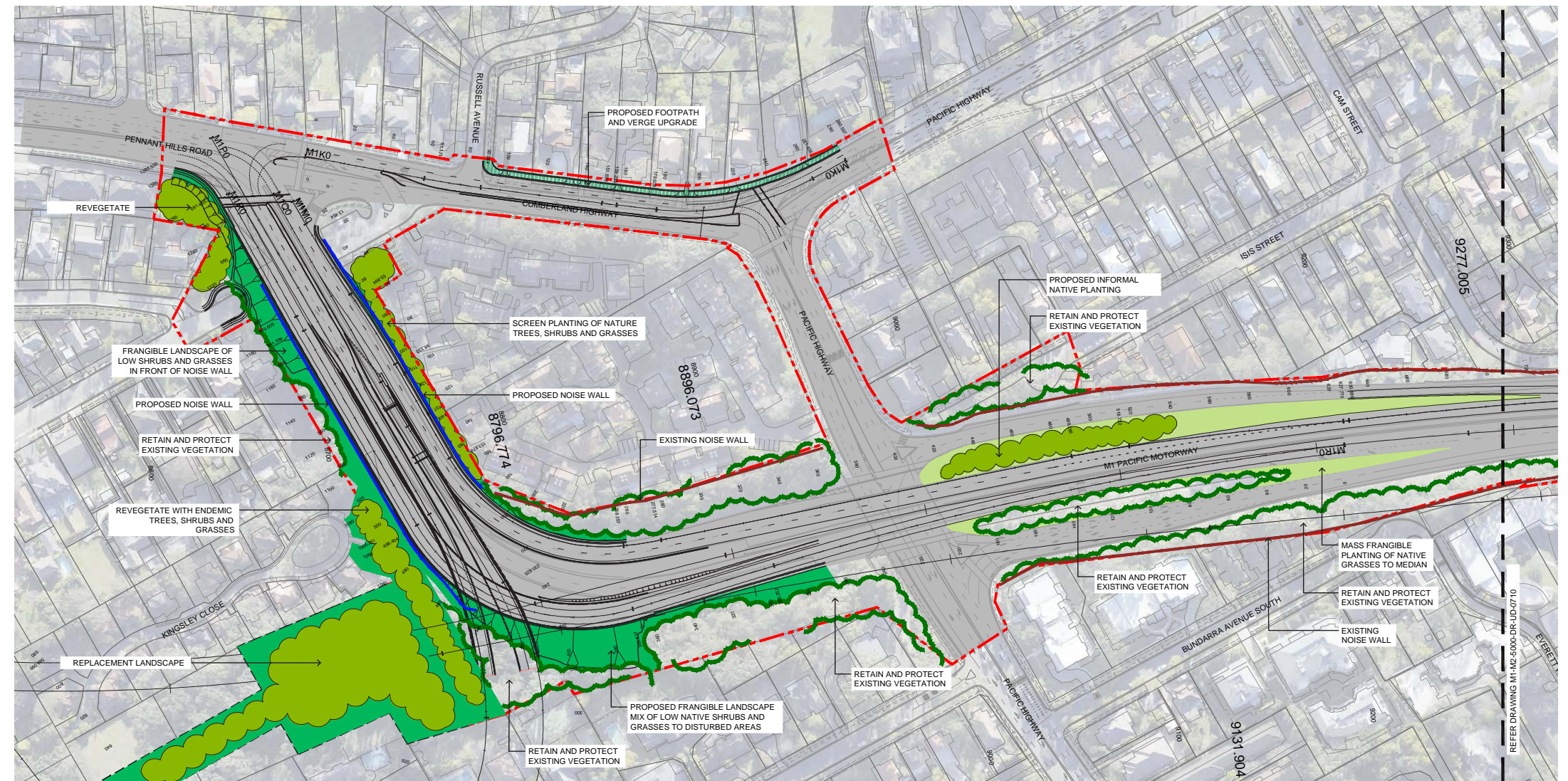
Dianella Caerulea

8.0 Landscape Design

8.14 Landscape Strategy - Replacement Landscapes

Typical Strategy

- Site specific treatment based on context of each site;
- Typical treatments include: Streetscape or native revegetation;
- Streetscape treatments to integrate with surrounding character;
- Street trees to enhance the integrity of adjacent streetscapes;
- Naturalistic mass planting in areas of revegetation using native species of trees, shrubs, ground covers and grasses;
- Opportunities to enhance fauna and flora links in revegetated sites; and
- Revegetation through a range of plant stock including tubestock, 5L to 75L. Potential to hydroseed large areas.



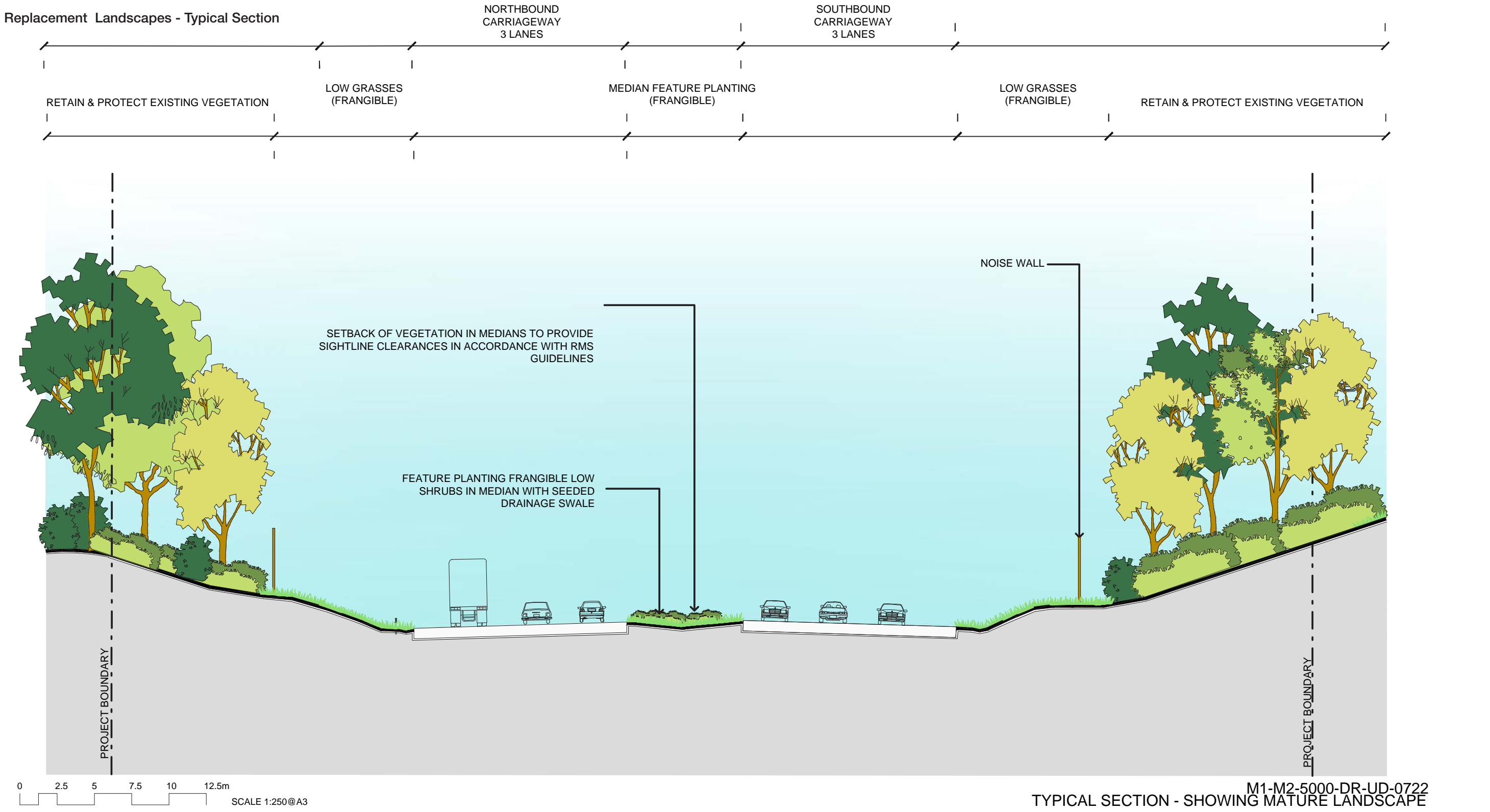
KEY

	PROJECT BOUNDARY		NATIVE MASS PLANTING OF SHRUBS AND GRASSES		STREET TREE
	PROPOSED NOISE WALL		LOW NATIVE GRASSES		FEATURE TREE
	EXISTING NOISE WALL		INFORMAL NATIVE TREE PLANTING		NATIVE FEATURE TREE
	PROPOSED RETAINING WALL		FEATURE MIXED SHRUBS		EXISTING TREE TO BE RETAINED & PROTECTED
	EXISTING VEGETATION				RAIN GARDENS WHERE NATURAL FLOWS ENTER COLLECTION SYSTEM

0 20 40 50 60 100m
SCALE 1:2000@A3

M1-M2-5000-DR-UD-0709
LANDSCAPE CONCEPT PLAN

8.0 Landscape Design



8.0 Landscape Design

Planting Palette

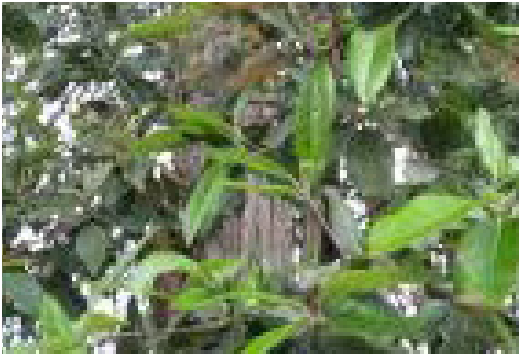
REPLACEMENT LANDSCAPES						
SYDNEY BLUE GUM HIGH FOREST AND SYDNEY TURPENTINE - IRONBARK FOREST REGENERATION SCREEN PLANTING						
Botanical Name	Common Name	Mature Height	Mature Width	Spacing	Pot Size	Staking
Street Trees						
Angophora costata	Smoothed Barked Apple	30-45m	20m	As shown	75L	2x(50x50x1800)
Eucalyptus paniculata	Grey Ironbark	30-45m	20m	As Shown	75L	2x(50x50x1800)
Eucalyptus pilularis	Blackbutt	30-45m	20m	As Shown	75L	2x(50x50x1800)
Eucalyptus saligna	Sydney Blue Gum	30-45m	20m	As Shown	75L	2x(50x50x1800)
Lagerstroemia indica	Crepe Myrtle	6-15m	5m	As Shown	75L	2x(50x50x1800)
Lophostemon confertus	Brushbox	30-45m	20m	As Shown	75L	2x(50x50x1800)
Syncarpia glomulifera	Turpentine	30-45m	20m	As Shown	75L	2x(50x50x1800)
Trees						
Angophora costata	SmoothedBarkedApple	30-45m	20m	As shown	75L	2x(50x50x1800)
Backhousia myrtifolia	Grey Myrtle	10-25m	15m	As shown	75L	2x(50x50x1800)
Elaeocarpus reticulatus	Blueberry Ash	8-12m	5-8m	As Shown	300mm	
Eucalyptus globoidea	White Stringybark	30-45m	20m	As Shown	75L	2x(50x50x1800)
Eucalyptus paniculata	Grey Ironbark	30-45m	20m	As Shown	75L	2x(50x50x1800)
Eucalyptus pilularis	Blackbutt	30-45m	20m	As Shown	75L	2x(50x50x1800)
Eucalyptus saligna	Sydney Blue Gum	30-45m	20m	As Shown	75L	2x(50x50x1800)
Syncarpia glomulifera	Turpentine	30-45m	20m	As Shown	75L	2x(50x50x1800)
Shrubs and Ground Covers						
Acacia longifolia	Long-leaved Wattle	7-8m	3m	As Shown	300mm	
Banksia ericifolia	Heath-leaved Banksia	6m	3m	As Shown	300mm	
Banksia integrifolia	Coast Banksia	6m	3m	As Shown	300mm	
Callistemon 'Captian Cook'	Bottlebrush	3-5m	1.5m	As Shown	300mm	
Callicoma serratifolia	Black Wattle	15m	8m	As Shown	300mm	
Dianella caeruleava rcaerulea	Flax-lily	0.3m	0.3m	6/m²	150mm	
Grevillea 'RobynGordon'	'Robyn Gordon'	1-1.5m	1m	As Shown	300mm	
Hakea dactryloides	Broad-leaved Hakea	1-2m	1m	As Shown	300mm	
Leucopogon juniperinus	Bearded Heath	0.5m	1m	4/m²	300mm	
Lomandra confertifolia	Mat-rush	0.6m	0.6m	6/m²	150mm	
Lomandra longifolia	Mat-rush	1m	1m	4/m²	150mm	
Hardenbergia violacea	Purple Coral Pea	.75m	1.5m	4/m²	150mm	
Melaleuca nodosa	Prickly-leaved Paperbark	2-4m	1.5m	As Shown	300mm	
Persoonia liniaris	Narrow-leaved Geebung	1.5-4m	2m	As Shown	150mm	
Lomandra hystrix	Basket Grass	0.6m	0.6m	6/m²	150mm	
Themeda australis	Kangeroo Grass	0.4-0.8m	1m	6/m²	150mm	
Syzygium smithii	Lilly Pilly	8-15m	5-8m	As Shown	300mm	



Eucalyptus paniculata



Eucalyptus saligna



Syncarpia glomulifera



Melaleuca nodosa



Elaeocarpus reticulatus



Hakea dactryloides



Lomandra hystrix



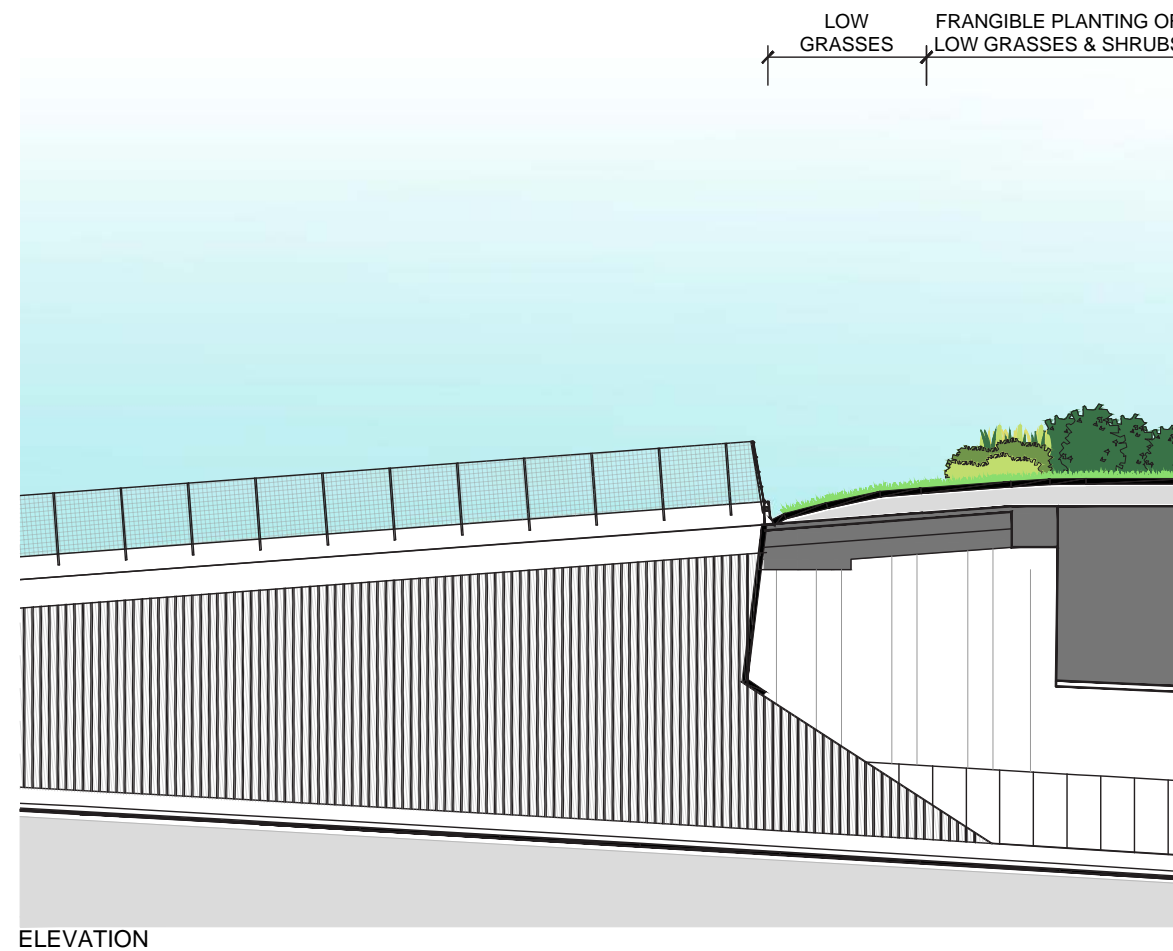
Dianella Caerulea

8.0 Landscape Design

8.15 Landscape Strategy - Portals

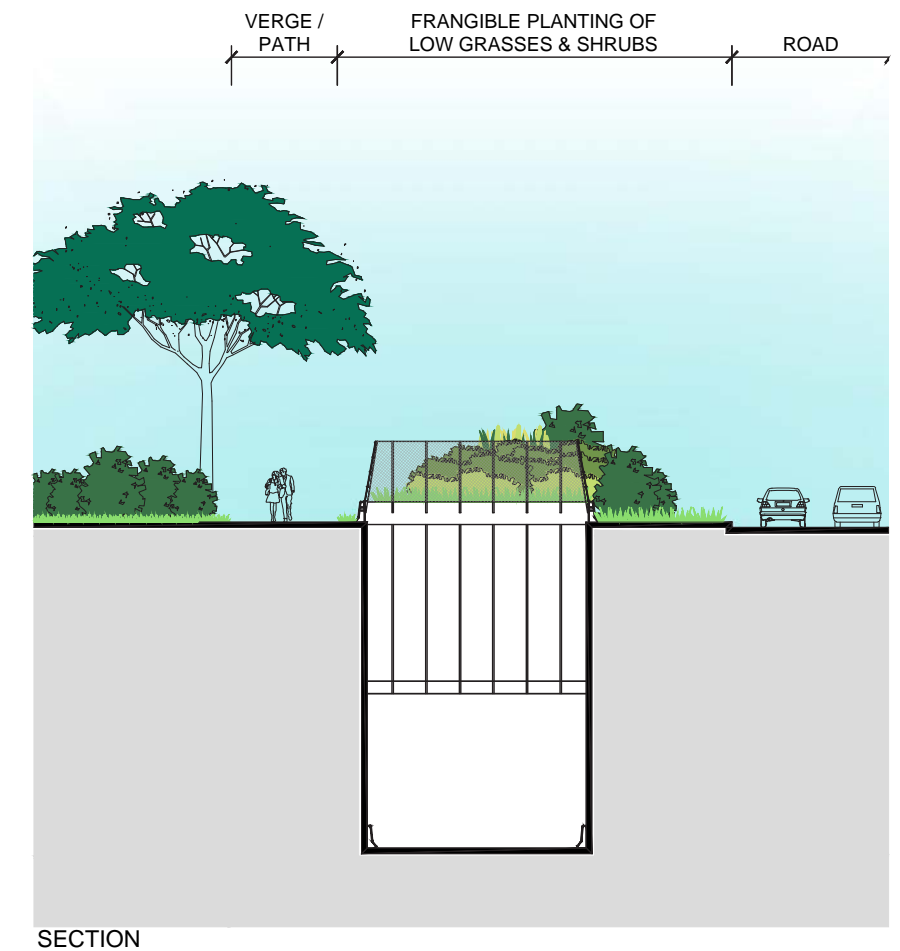
Typical Strategy

- Continuation of naturalistic planting using native species;
- Blend earthworks with surrounding topography;
- Screen drains and benches;
- Frangible planting of low shrubs and grasses at edges;
- Feature tree planting where possible at gateway/interchange locations; and
- Adhere to safety and sight line requirements.



Mature Landscape Shown

0 2 4 6 8 10m
SCALE 1:200@A3



TYPICAL PORTAL
M1-M2-5000-DR-UD-0723
LANDSCAPE CONCEPT SECTION