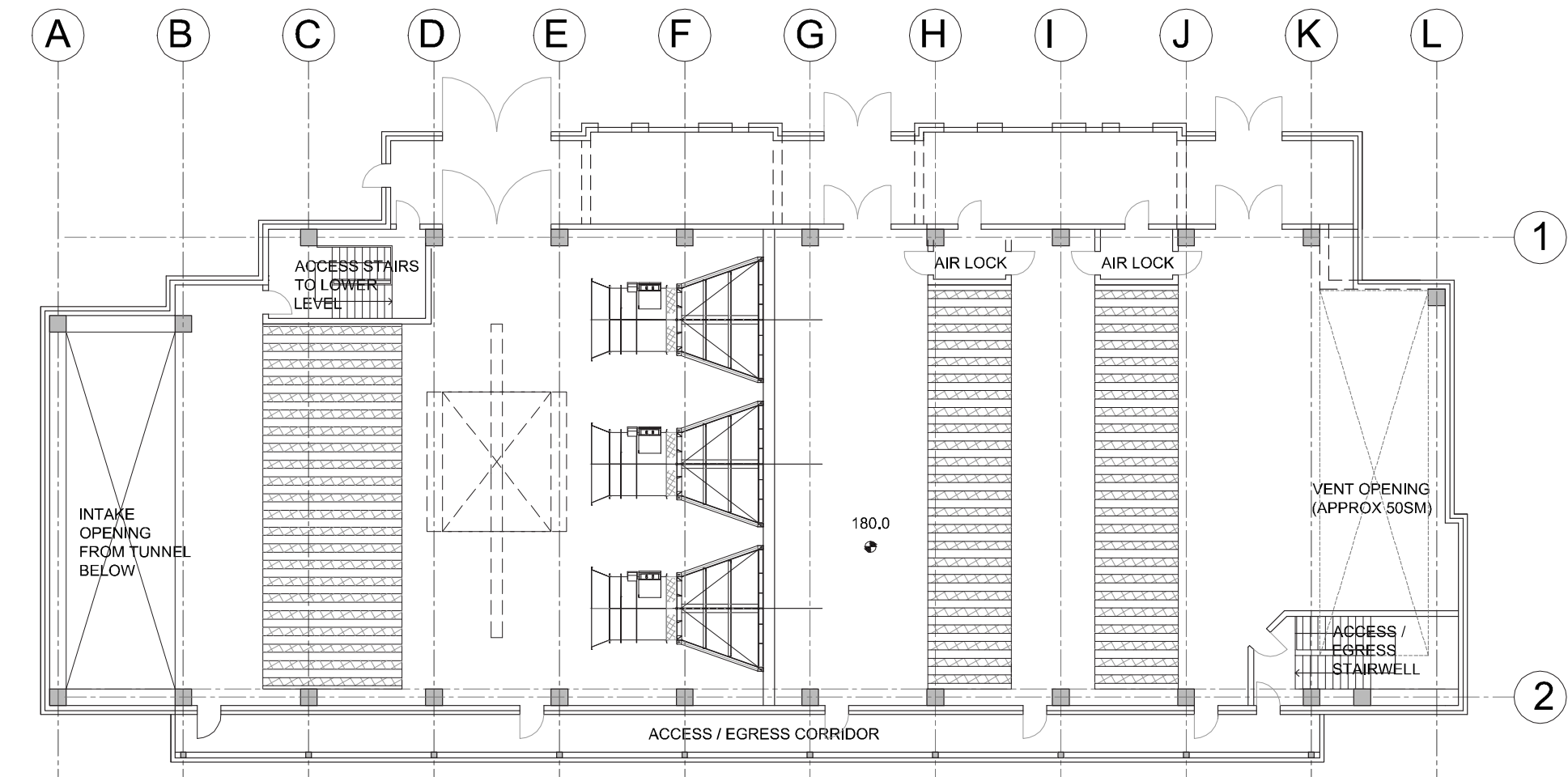


Artist's Impression Only

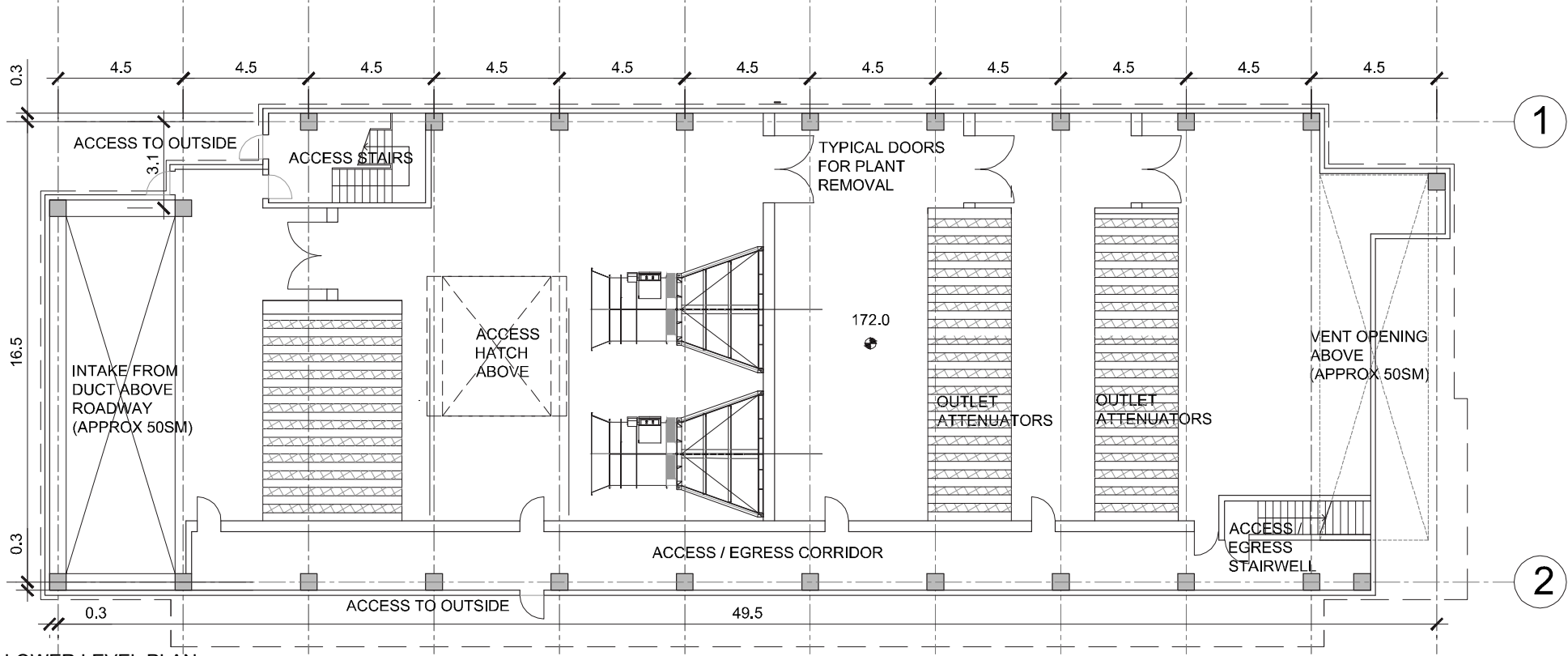


NORTHERN VENTILATION FACILITY - VIEW FROM WOONONA AVE NORTH LOOKING SOUTH EAST

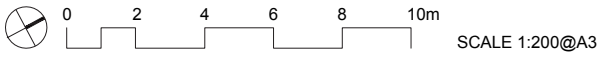
M1-M2-5000-DR-UD-0993

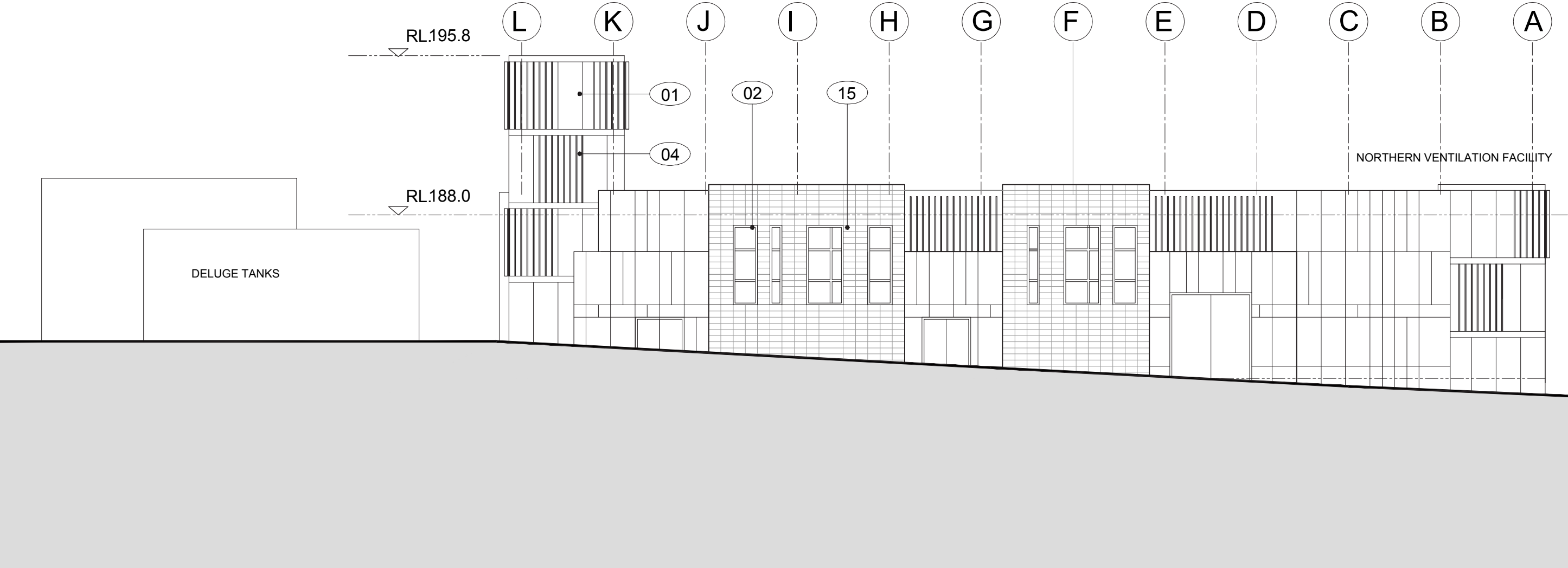


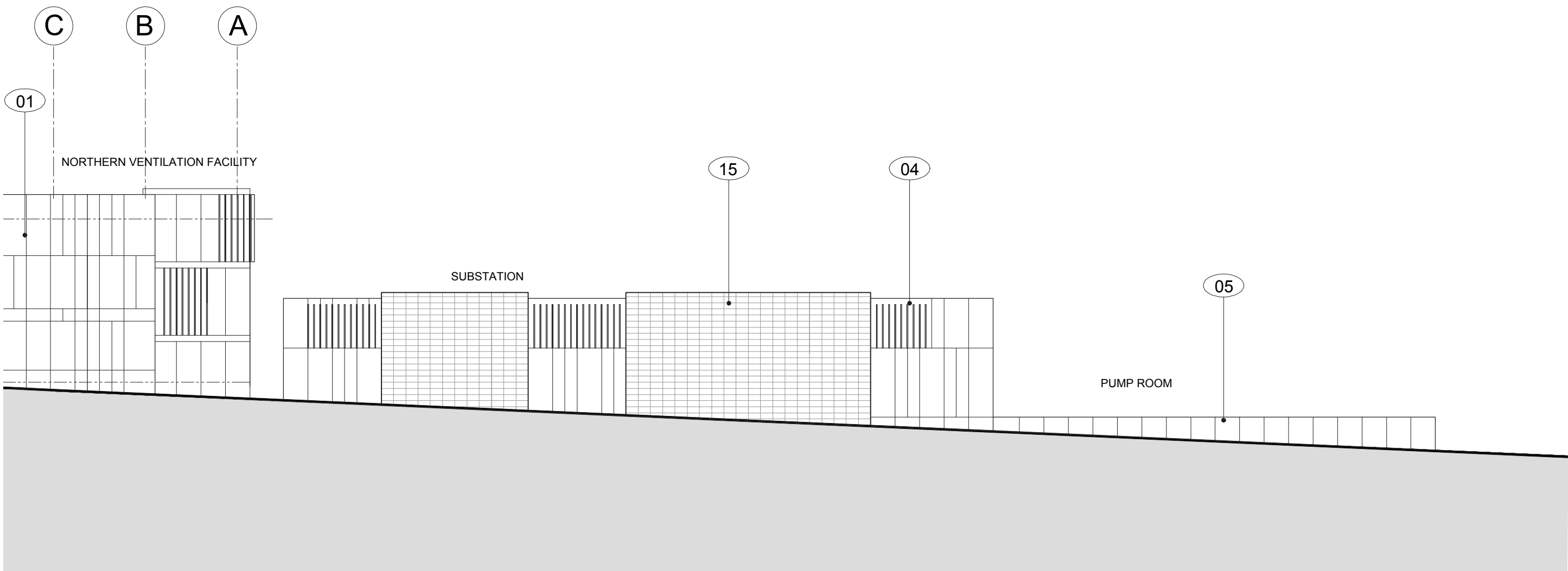
UPPER LEVEL PLAN



LOWER LEVEL PLAN



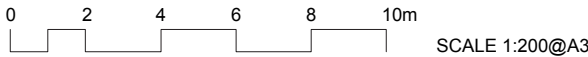


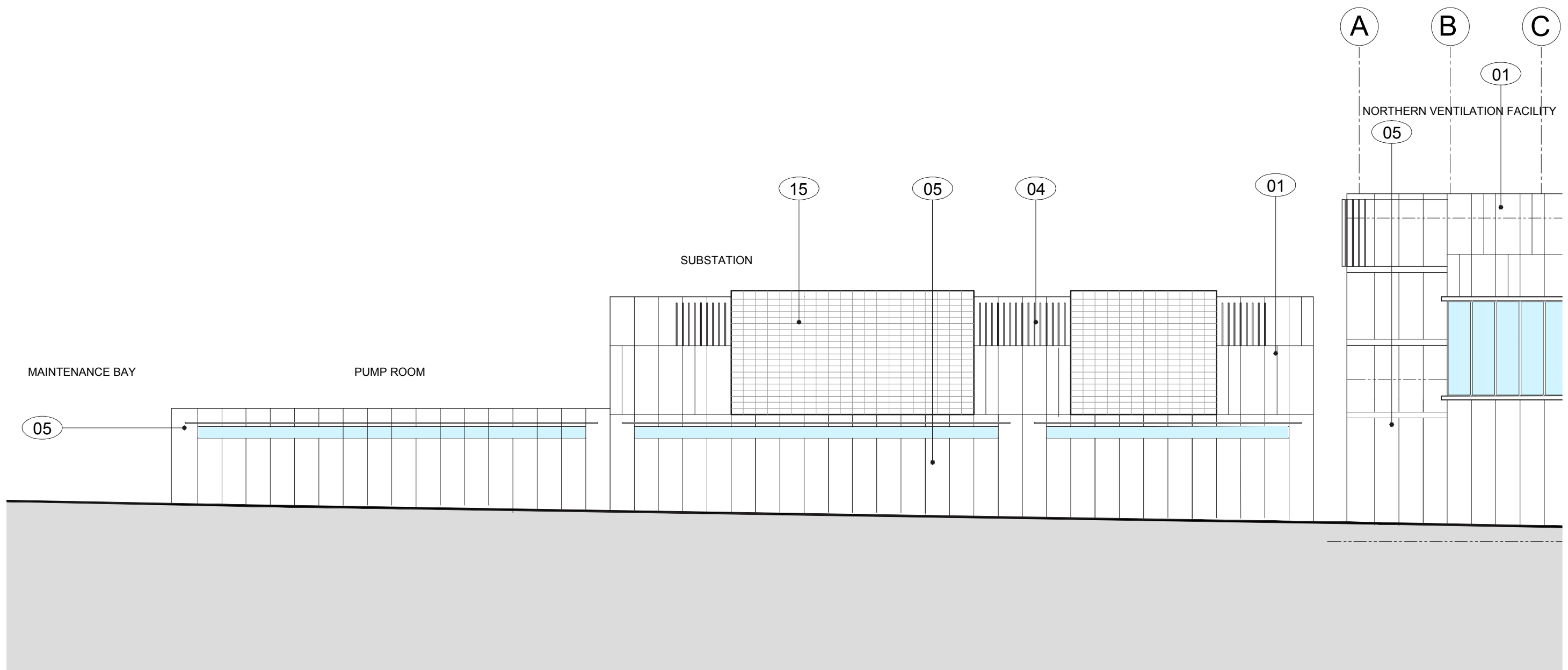


WEST ELEVATION

Legend

- | | | | | | | | |
|----|---|----|--|----|--------------------------------|----|-----------|
| 01 | GRC Panels in Various Colours | 05 | Painted rendered Concrete Wall | 10 | Exposed Concrete - No Finish | 15 | Sandstone |
| 02 | Insulated Glass | 06 | Standard Pattern Alum Sun Screen Grating 1200 wide | 11 | Door to Engineers Requirements | | |
| 03 | Single Panel Glass - 600 x 1200 - Operable as shown | 07 | Steel Structure to Engineers Requirement | 12 | Galv Steel Roll Up Door | | |
| 04 | Timber Look Battens | 08 | Removable Alum Louver | 13 | Rain Harvesting Equipment | | |
| | | 09 | Alum Security Screen - Match Sun Screen | 14 | Transparent Panels | | |

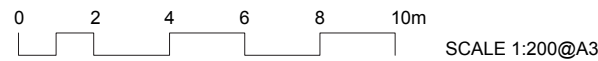




EAST ELEVATION

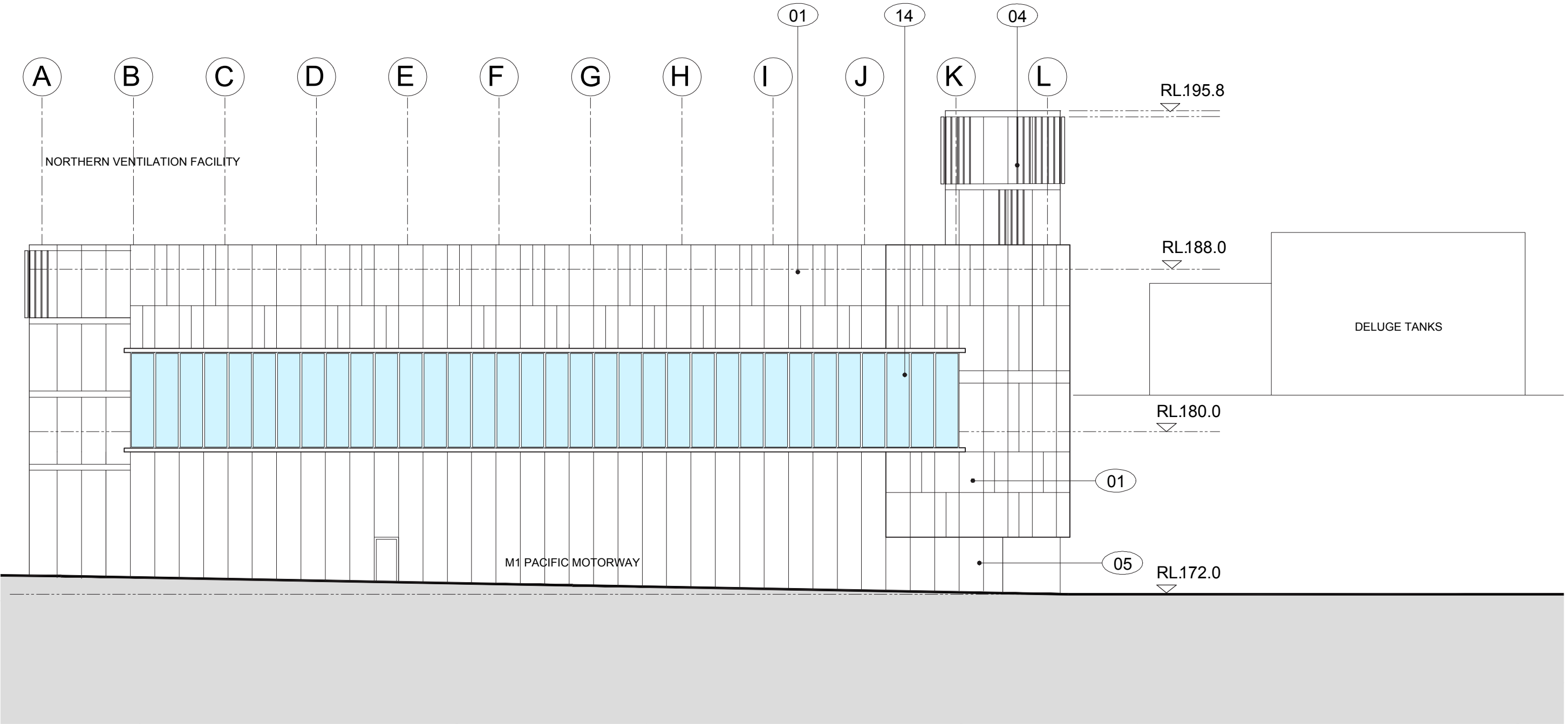
Legend

- | | | | | | | | |
|----|---|----|--|----|--------------------------------|----|-----------|
| 01 | GRC Panels in Various Colours | 05 | Painted rendered Concrete Wall | 10 | Exposed Concrete - No Finish | 15 | Sandstone |
| 02 | Insulated Glass | 06 | Standard Pattern Alum Sun Screen Grating 1200 wide | 11 | Door to Engineers Requirements | | |
| 03 | Single Panel Glass - 600 x 1200 - Operable as shown | 07 | Steel Structure to Engineers Requirement | 12 | Galv Steel Roll Up Door | | |
| 04 | Timber Look Battens | 08 | Removable Alum Louver | 13 | Rain Harvesting Equipment | | |
| | | 09 | Alum Security Screen - Match Sun Screen | 14 | Transparent Panels | | |



NORTHERN VENTILATION FACILITY - ELEVATIONS - M1 PACIFIC MOTORWAY SIDE

M1-M2-5000-DR-UD-0561



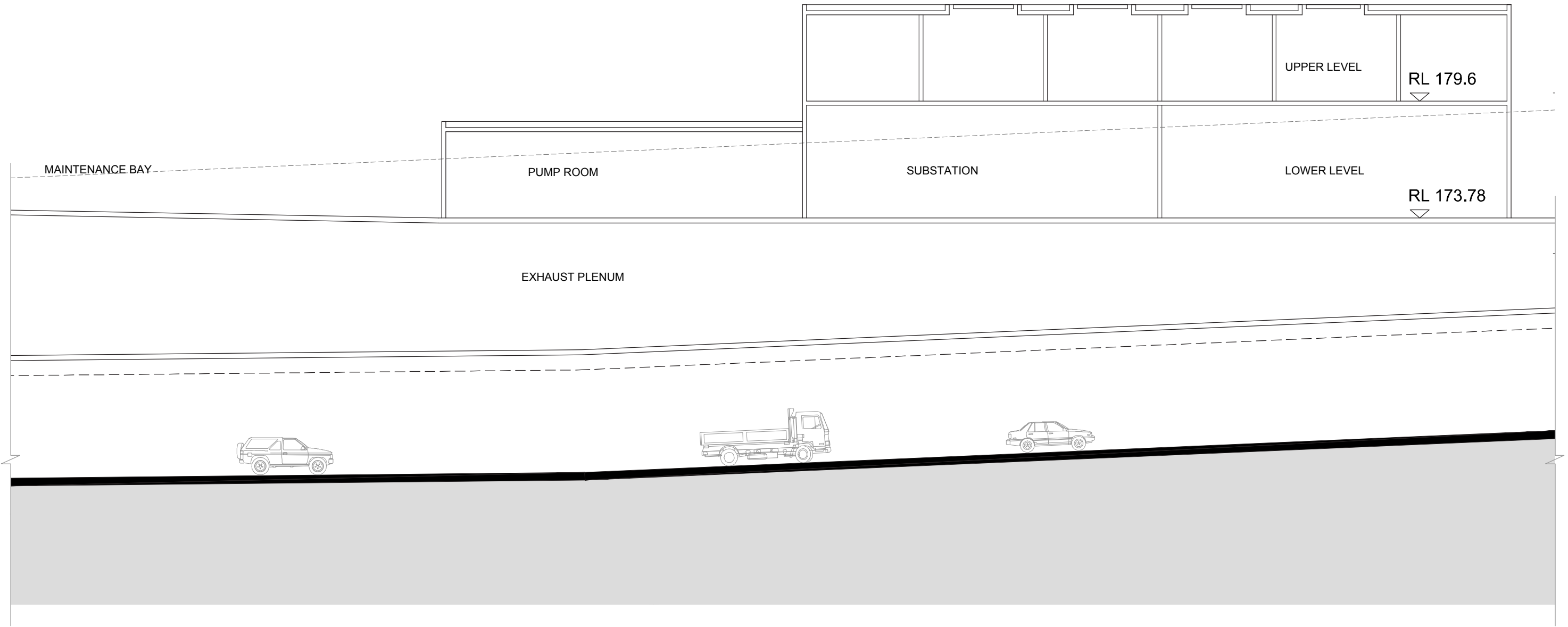
EAST ELEVATION

Legend

- | | | | | | | | |
|----|---|----|--|----|--------------------------------|----|-----------|
| 01 | GRC Panels in Various Colours | 05 | Painted rendered Concrete Wall | 10 | Exposed Concrete - No Finish | 15 | Sandstone |
| 02 | Insulated Glass | 06 | Standard Pattern Alum Sun Screen Grating 1200 wide | 11 | Door to Engineers Requirements | | |
| 03 | Single Panel Glass - 600 x 1200 - Operable as shown | 07 | Steel Structure to Engineers Requirement | 12 | Galv Steel Roll Up Door | | |
| 04 | Timber Look Battens | 08 | Removable Alum Louver | 13 | Rain Harvesting Equipment | | |
| | | 09 | Alum Security Screen - Match Sun Screen | 14 | Transparent Panels | | |

0 2 4 6 8 10m
SCALE 1:200@A3

M1-M2-5000-DR-UD-0562
NORTHERN VENTILATION FACILITY - ELEVATIONS - M1 PACIFIC MOTORWAY SIDE



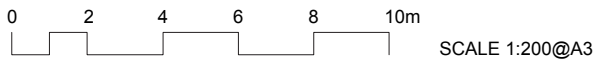
LONGITUDINAL SECTION

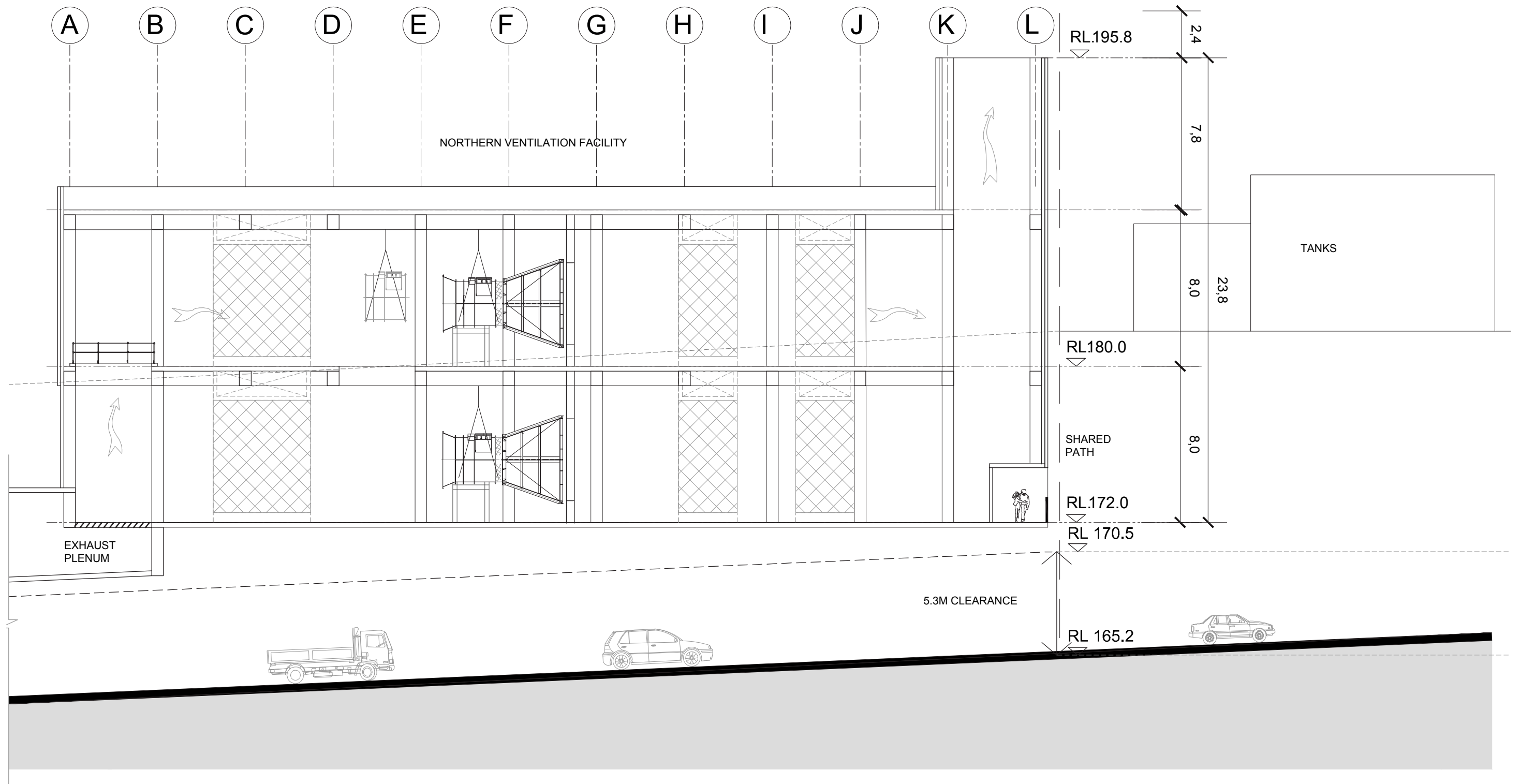
Legend

- 01 GRC Panels in Various Colours
- 02 Insulated Glass - 600 x 1200 - Operable as shown
- 03 Single Panel Glass - 600 x 1200 - Operable as shown
- 04 Metal Wall Panels - Horizontal ridges

- 05 Painted rendered Concrete Wall
- 06 Standard Pattern Alum Sun Screen Grating 1200 wide
- 07 Steel Structure to Engineers Requirement
- 08 Removable Alum Louver
- 09 Alum Security Screen - Match Sun Screen

- 10 Exposed Concrete - No Finish
- 11 Door to Engineers Requirements
- 12 Galv Steel Roll Up Door
- 13 Rain Harvesting Equipment
- 14 Transparent Panels





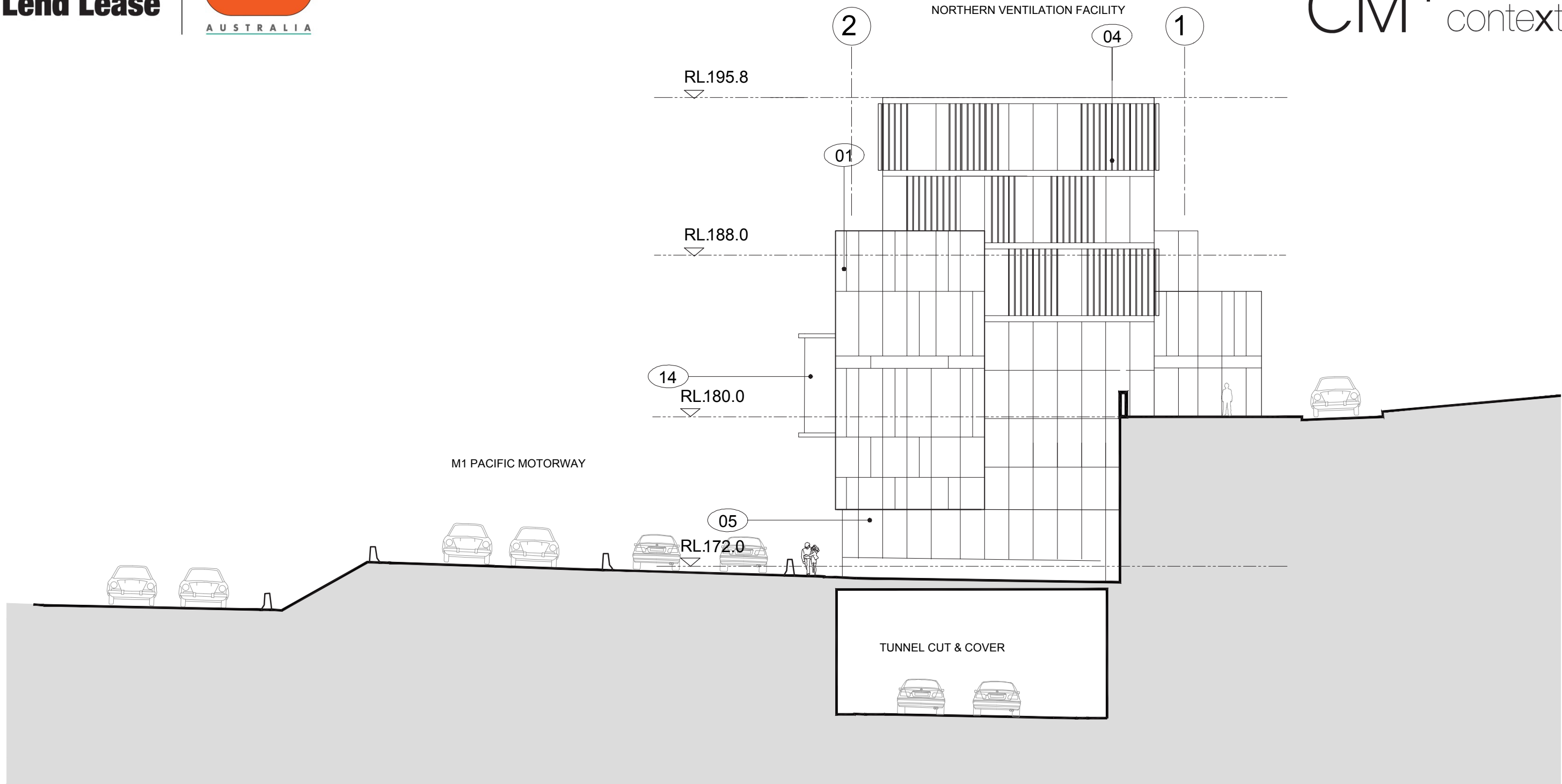
LONGITUDINAL SECTION

Legend

- | | | | | | |
|----|---|----|--|----|--------------------------------|
| 01 | GRC Panels in Various Colours | 05 | Painted rendered Concrete Wall | 10 | Exposed Concrete - No Finish |
| 02 | Insulated Glass - 600 x 1200 - Operable as shown | 06 | Standard Pattern Alum Sun Screen Grating 1200 wide | 11 | Door to Engineers Requirements |
| 03 | Single Panel Glass - 600 x 1200 - Operable as shown | 07 | Steel Structure to Engineers Requirement | 12 | Galv Steel Roll Up Door |
| 04 | Metal Wall Panels - Horizontal ridges | 08 | Removable Alum Louver | 13 | Rain Harvesting Equipment |
| | | 09 | Alum Security Screen - Match Sun Screen | 14 | Transparent Panels |

0 2 4 6 8 10m
SCALE 1:200@A3

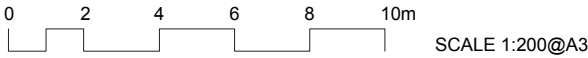
M1-M2-5000-DR-UD-0566
NORTHERN VENTILATION FACILITY -LONGITUDINAL SECTION



NORTH ELEVATION

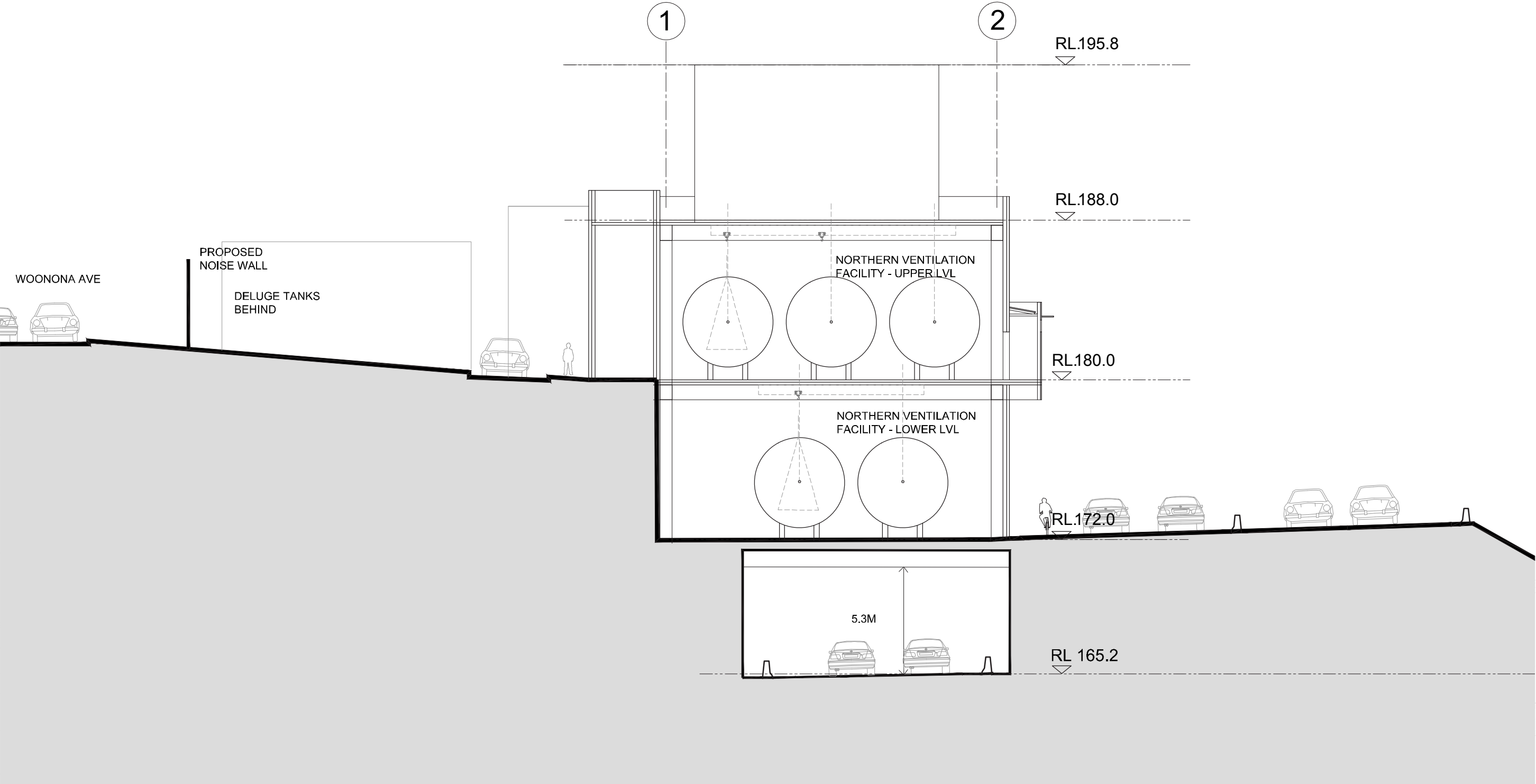
Legend

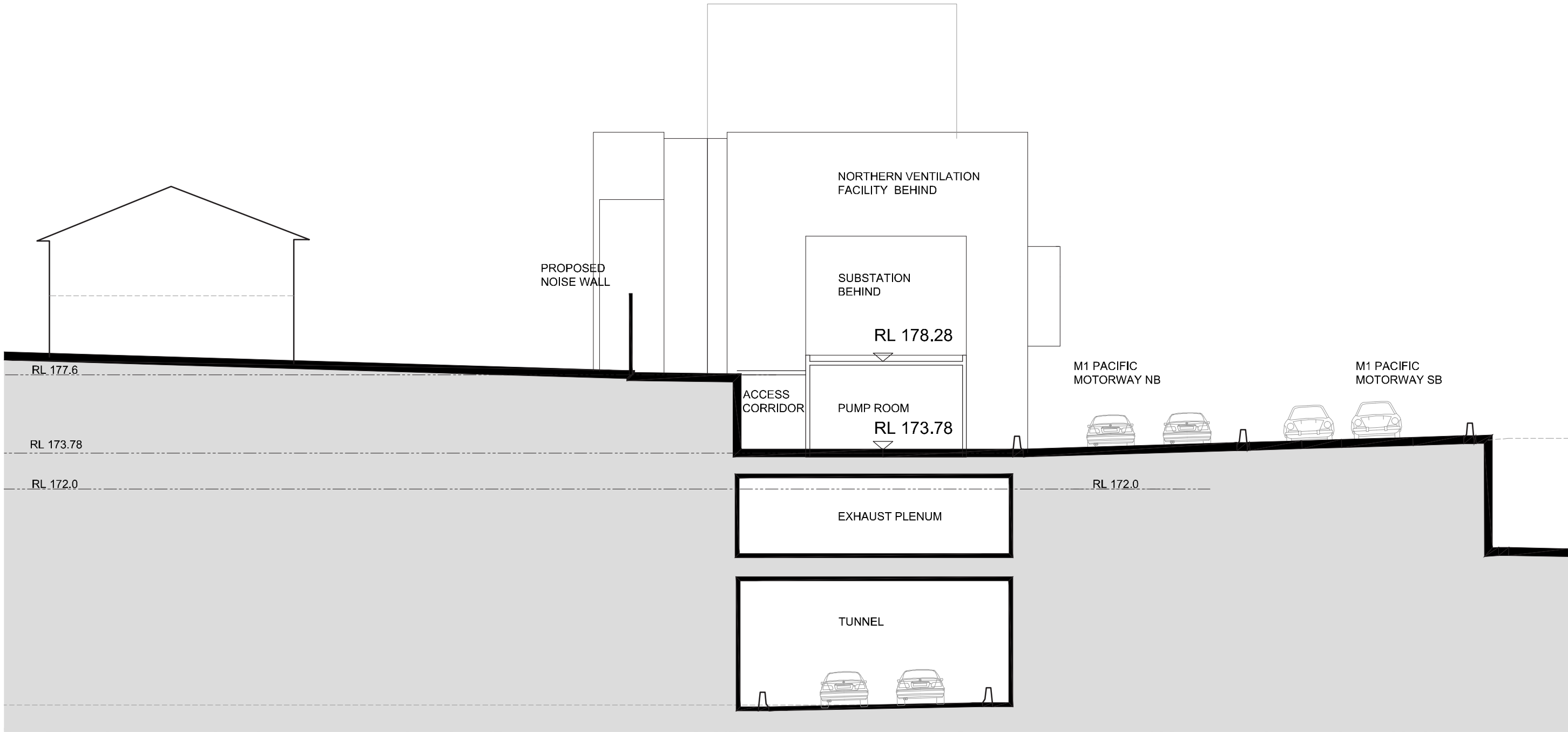
- | | | | | | | | |
|----|---|----|--|----|--------------------------------|----|-----------|
| 01 | GRC Panels in Various Colours | 05 | Painted rendered Concrete Wall | 10 | Exposed Concrete - No Finish | 15 | Sandstone |
| 02 | Insulated Glass | 06 | Standard Pattern Alum Sun Screen Grating 1200 wide | 11 | Door to Engineers Requirements | | |
| 03 | Single Panel Glass - 600 x 1200 - Operable as shown | 07 | Steel Structure to Engineers Requirement | 12 | Galv Steel Roll Up Door | | |
| 04 | Timber Look Battens | 08 | Removable Alum Louver | 13 | Rain Harvesting Equipment | | |
| | | 09 | Alum Security Screen - Match Sun Screen | 14 | Transparent Panels | | |



NORTHERN VENTILATION FACILITY - ELEVATIONS - LOOKING SOUTH

M1-M2-5000-DR-UD-0560



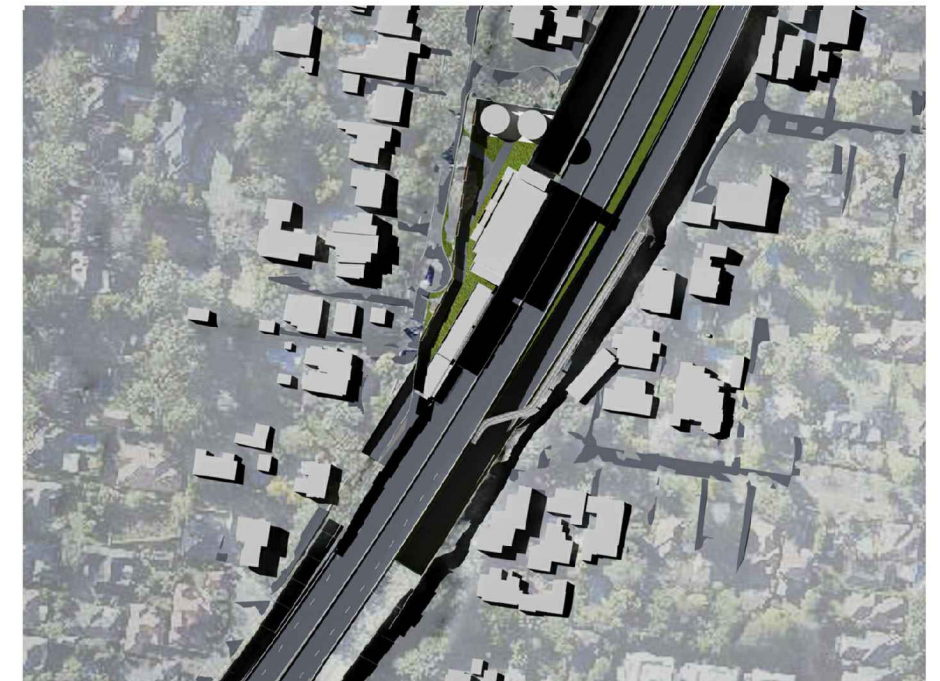




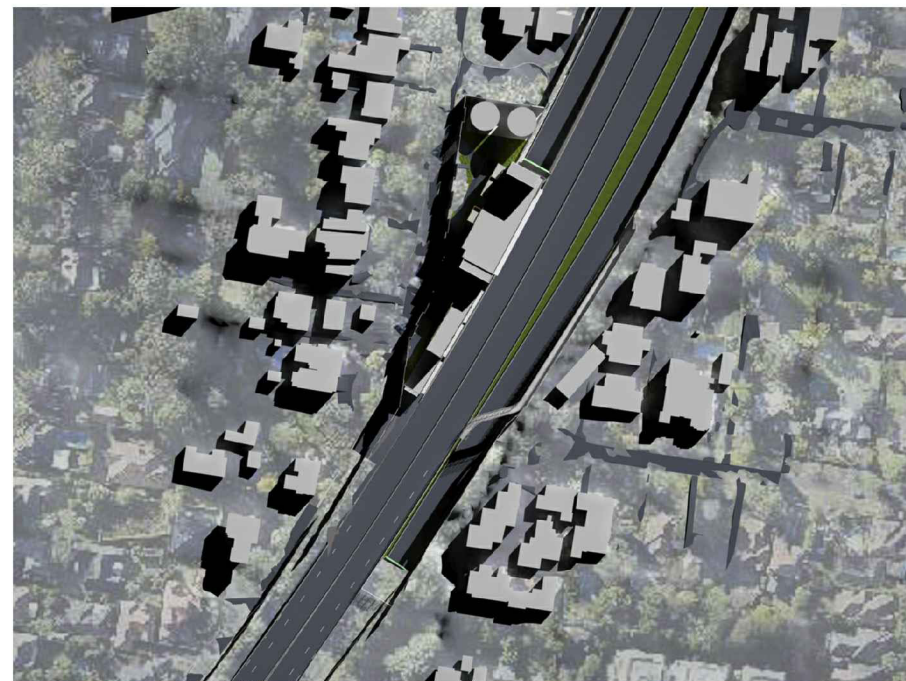
March 22 0900



March 22 1200



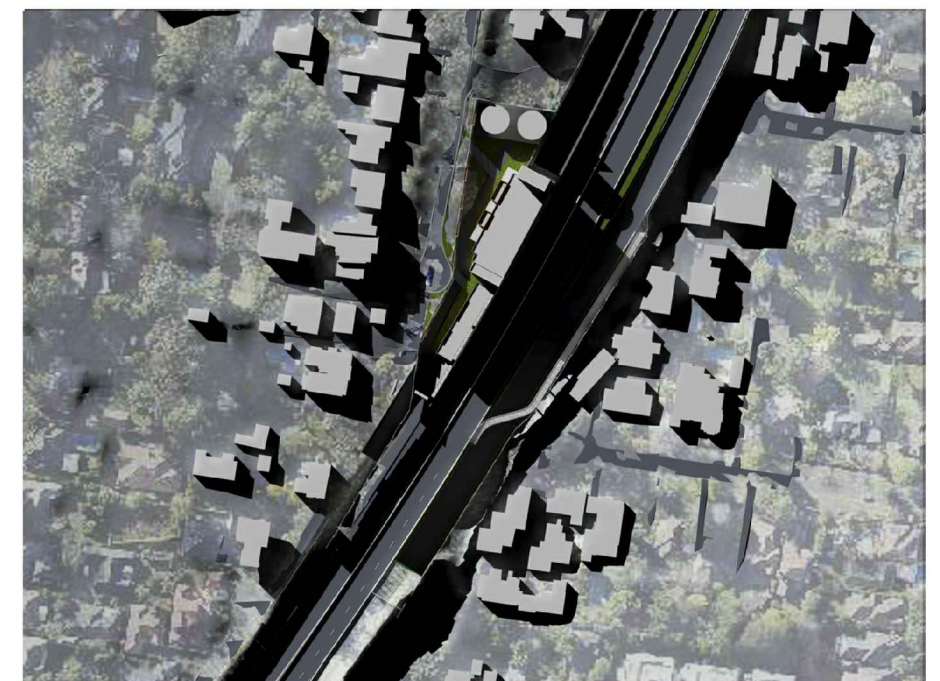
March 22 1500



June 21 0900



June 21 1200



June 21 1500