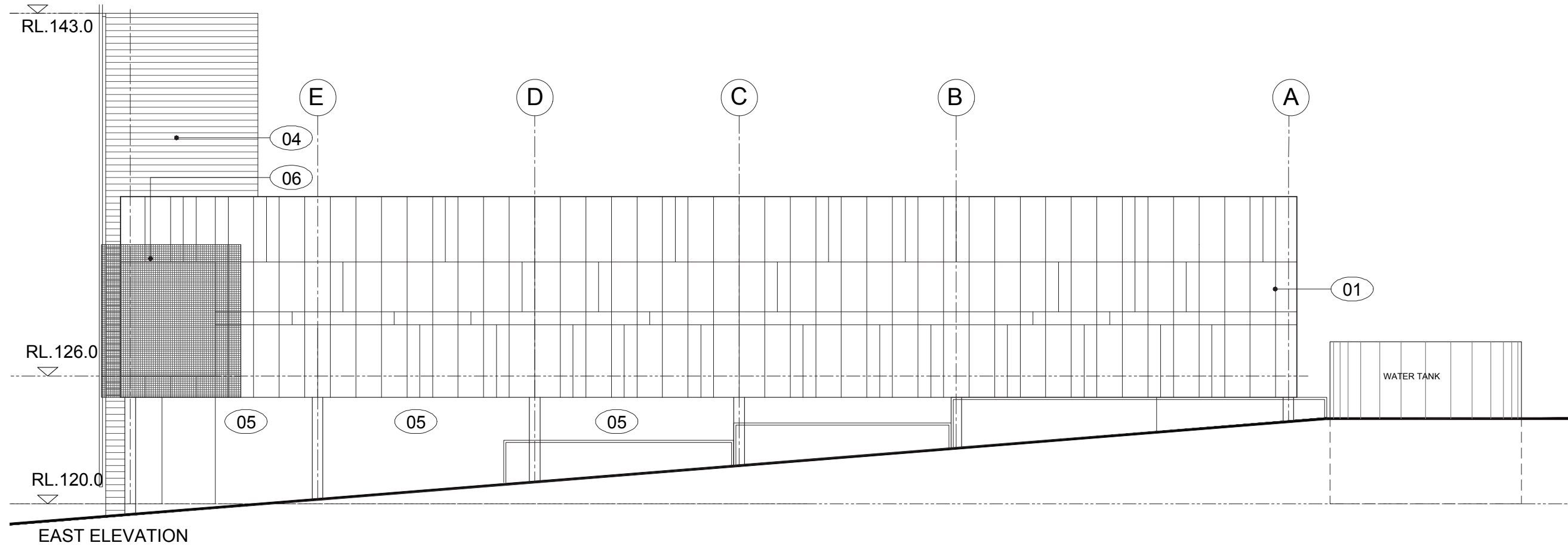
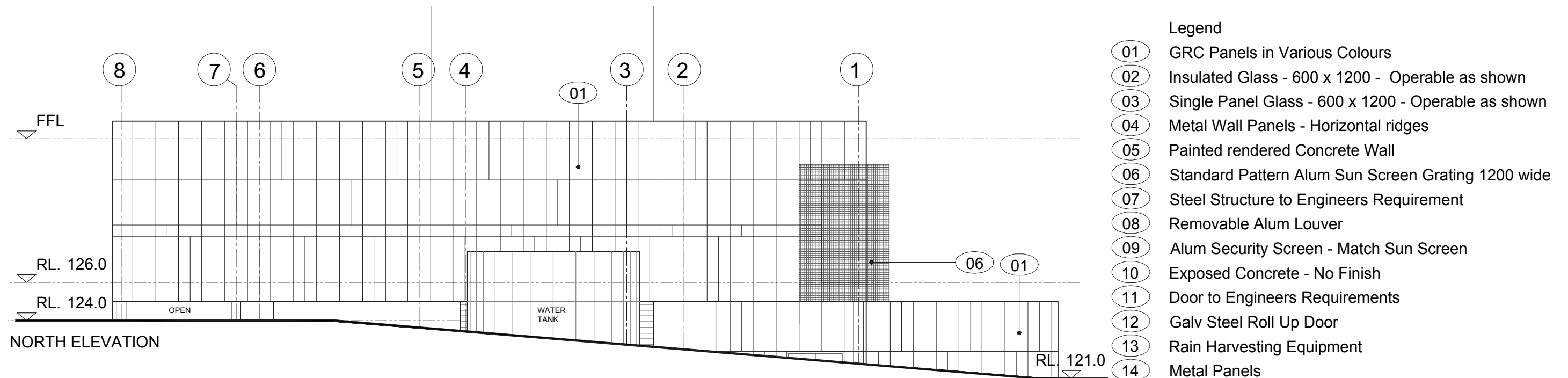
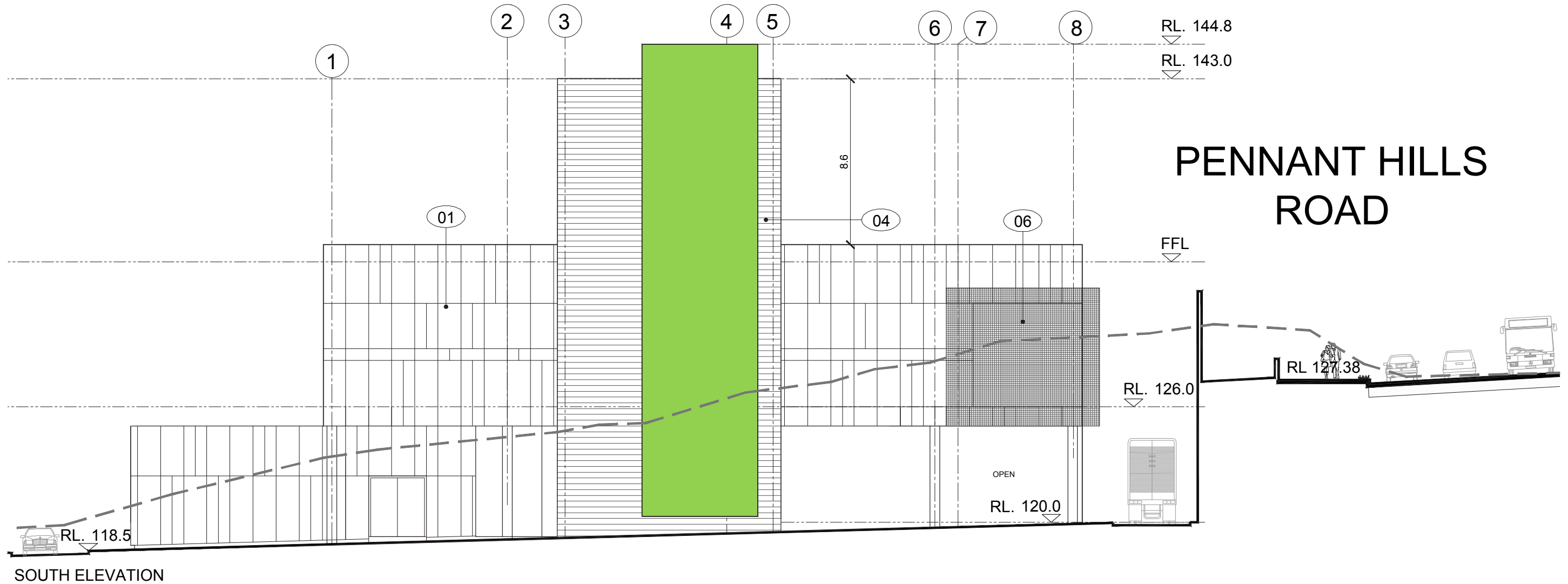


- 01 GRC Panels in Various Colours
- 02 Insulated Glass - 600 x 1200 - Operable as shown
- 03 Single Panel Glass - 600 x 1200 - Operable as shown
- 04 Metal Wall Panels - Horizontal ridges
- 05 Painted rendered Concrete Wall
- 06 Standard Pattern Alum Sun Screen Grating 1200 wide
- 07 Steel Structure to Engineers Requirement
- 08 Removable Alum Louver
- 09 Alum Security Screen - Match Sun Screen
- 10 Exposed Concrete - No Finish
- 11 Door to Engineers Requirements
- 12 Galv Steel Roll Up Door
- 13 Rain Harvesting Equipment
- 14 Metal Panels



0 2 4 6 8 10m
SCALE 1:200@A3

M1-M2-5000-DR-UD-0523
MOTORWAY OPERATIONS COMPLEX - SOUTHERN VENTILATION FACILITY - ELEVATIONS



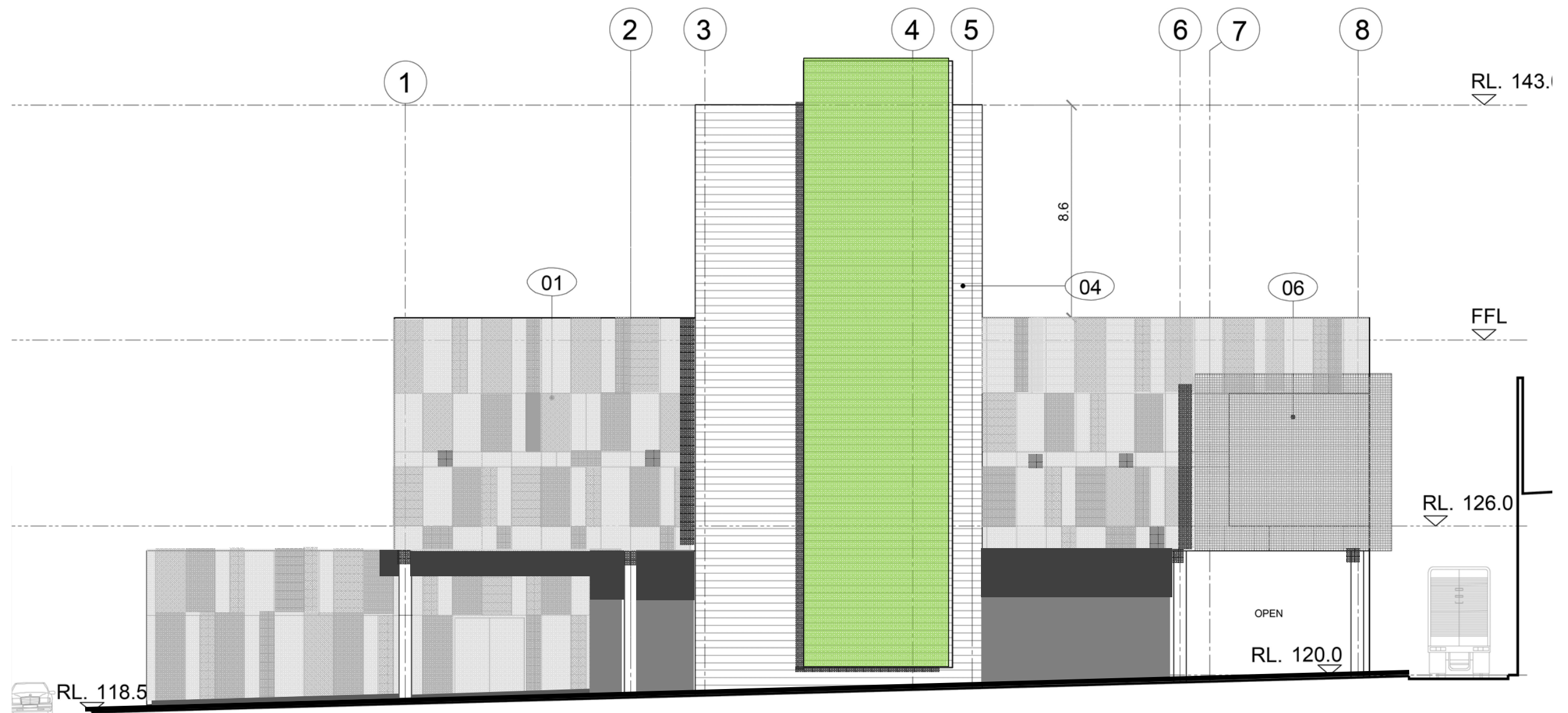
0 2 4 6 8 10m
SCALE 1:200@A3

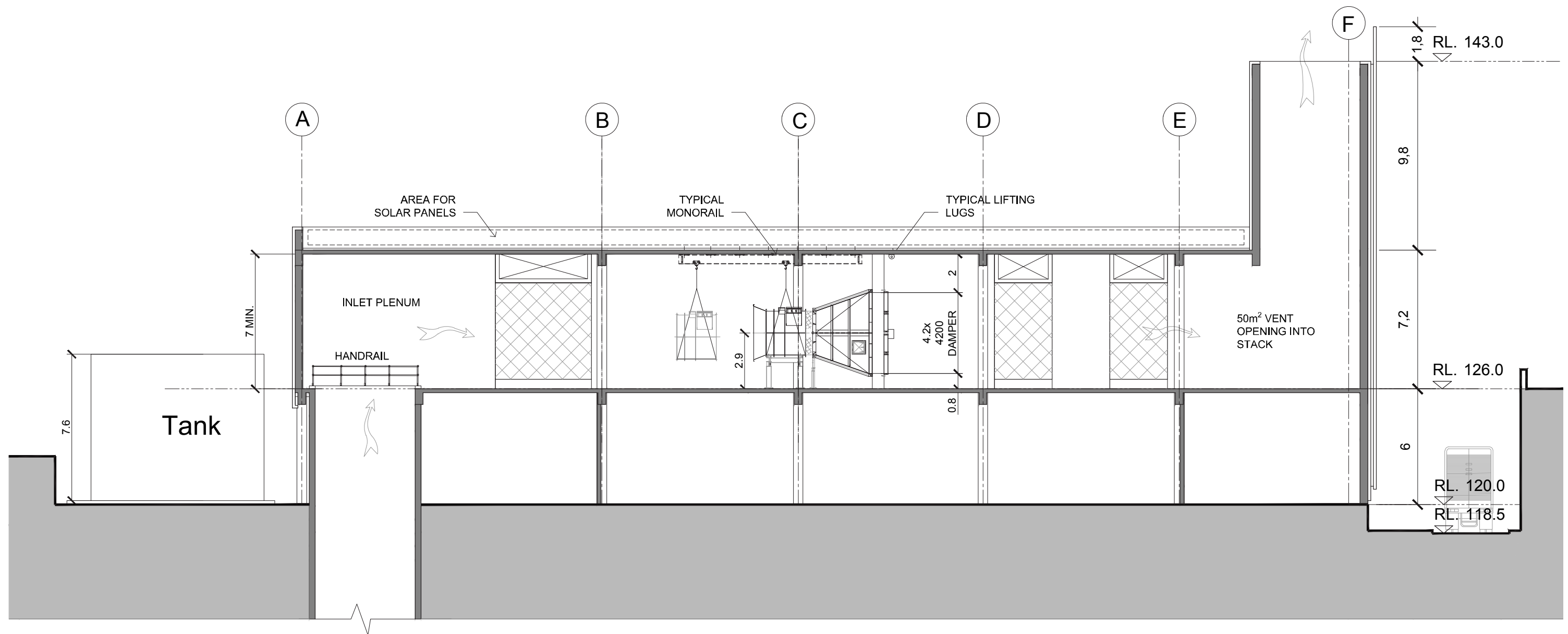
MOTORWAY OPERATIONS COMPLEX - SOUTHERN VENTILATION FACILITY - ELEVATIONS
M1-M2-5000-DR-UD-0524

6.0 Operational Ancillary Facilities

The southern ventilation facility facing the Hills M2 Motorway has a feature panel with the project signature colour.

The panel floats over the ventilation tower with recessed LED back lighting.





SECTION A-A

CONNECTION TO TUNNEL
TBC

Legend

- | | | |
|--|---|-----------------------------------|
| 01 GRC Panels in Various Colours | 05 Painted rendered Concrete Wall | 10 Exposed Concrete - No Finish |
| 02 Insulated Glass - 600 x 1200 - Operable as shown | 06 Standard Pattern Alum Sun Screen Grating 1200 wide | 11 Door to Engineers Requirements |
| 03 Single Panel Glass - 600 x 1200 - Operable as shown | 07 Steel Structure to Engineers Requirement | 12 Galv Steel Roll Up Door |
| 04 Metal Wall Panels - Horizontal ridges | 08 Removable Alum Louver | 13 Rain Harvesting Equipment |
| | 09 Alum Security Screen - Match Sun Screen | 14 Metal Panels |





March 22 0900



March 22 1200



March 22 1500



June 21 0900



June 21 1200



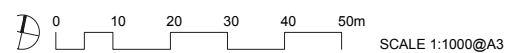
June 21 1500

6.0 Operational Ancillary Facilities

6.10 Endeavour Energy Switching Station Site - Coral Tree Drive

The Endeavour Energy switching station site at Coral tree Drive is intended to serve as the main electrical supply point for the project. It contains a switch station, parking and amenity facilities. It has the following features:

- The site is organised with the all facilities tucked into the landscape along Coral Tree Drive. Facilities are organised around a small parking bay;
- The switching station covers an area of approximately 510m².
- The built form typology is a single storey layout with the switch station reaching RL128.5;
- The landform is sloped to the south and some benching and retaining walls would be required;
- The site is highly visible from adjacent properties to the south. Landscape buffers have been maintained around the facilities where possible. Due to the tight site area these are proposed with low and high cover landscape to screen the facilities.
- All site access would be directly from Coral Tree Drive; and
- Finishes include GRC panels in various colours and sizes to provide a pattern that reduces the visual bulk of the building, provides for a more fine grained scale and reduces its utilitarian appearance. The building has been configured to provide a varied edge to the residential area to reduce its bulk and scale.

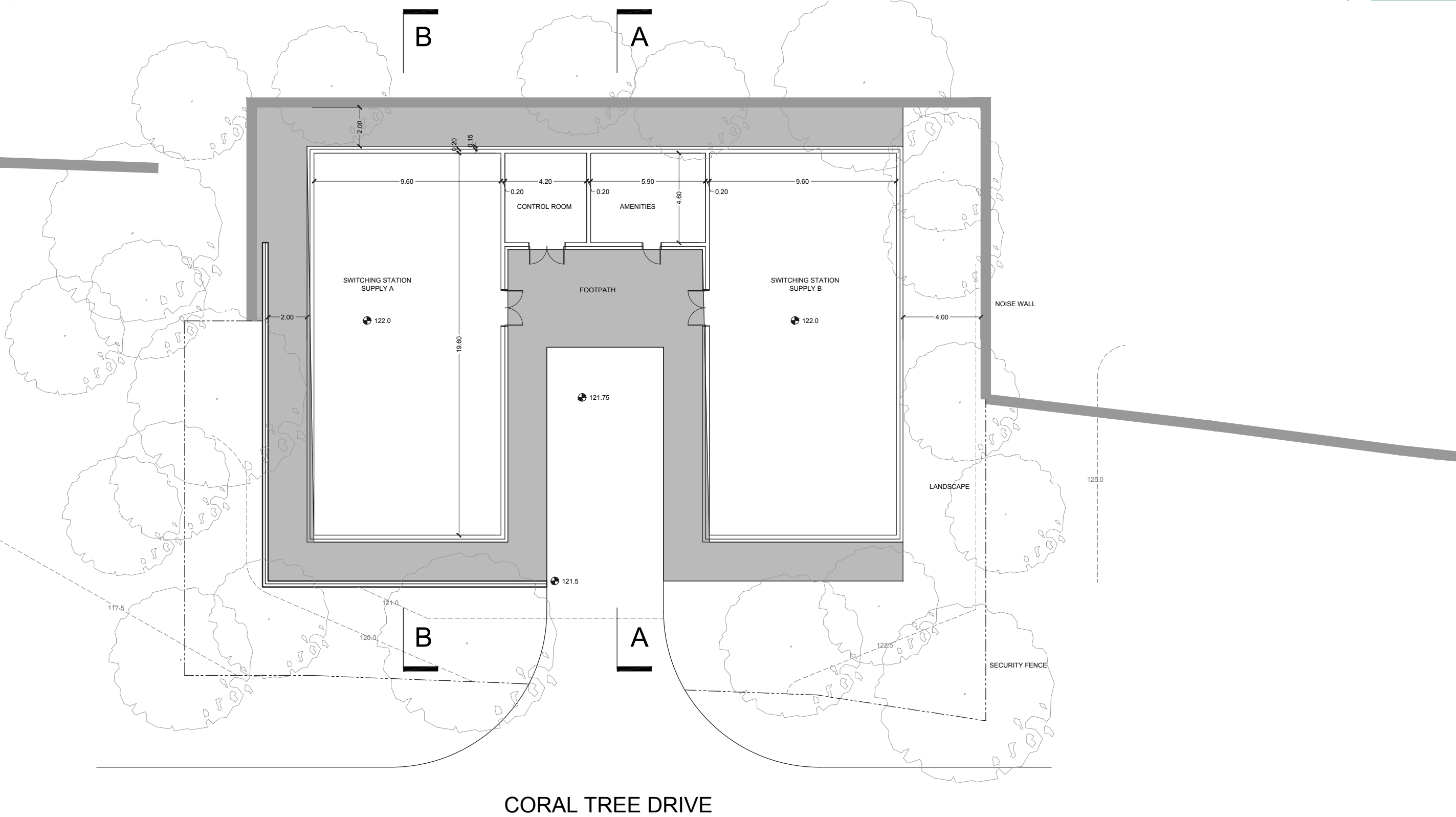


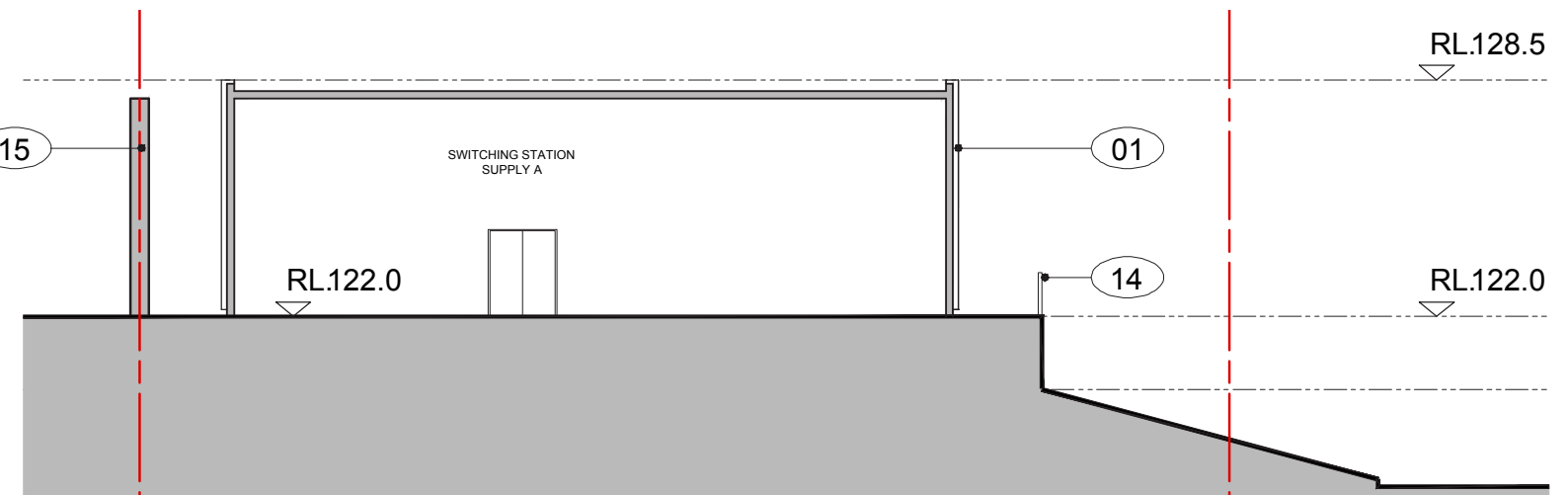
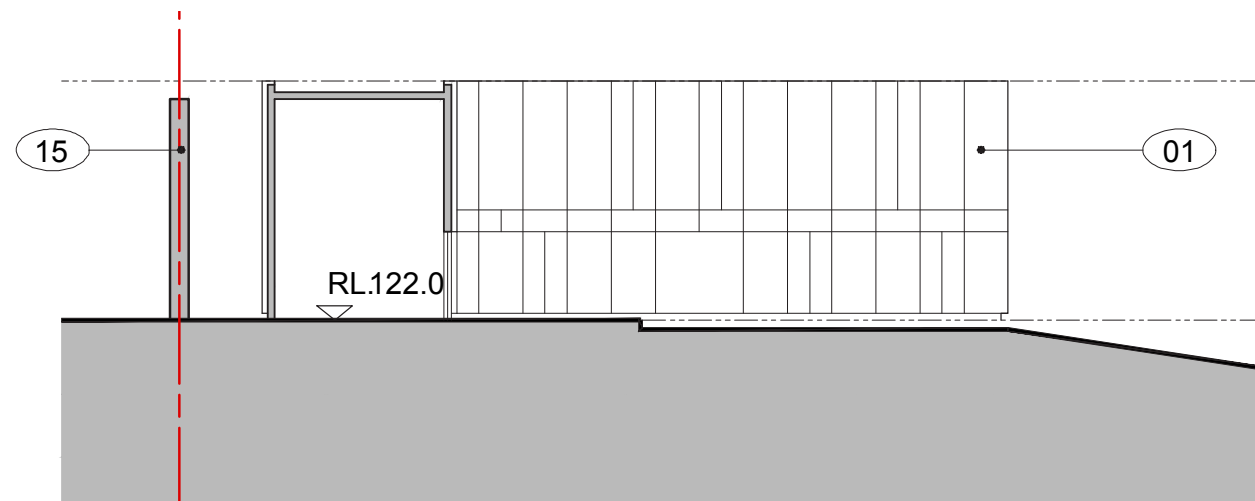
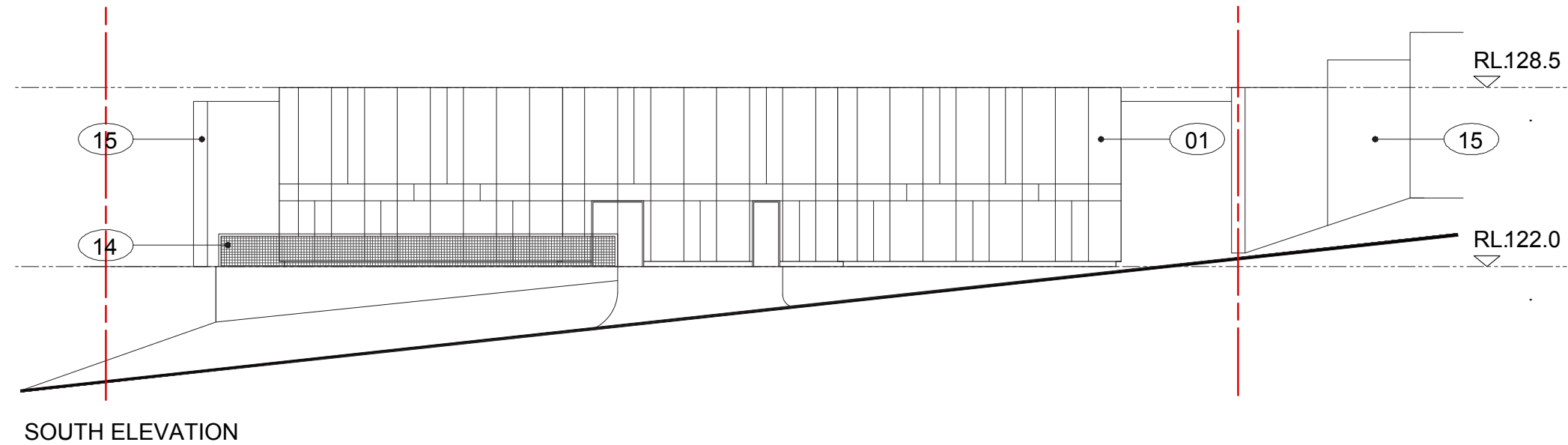
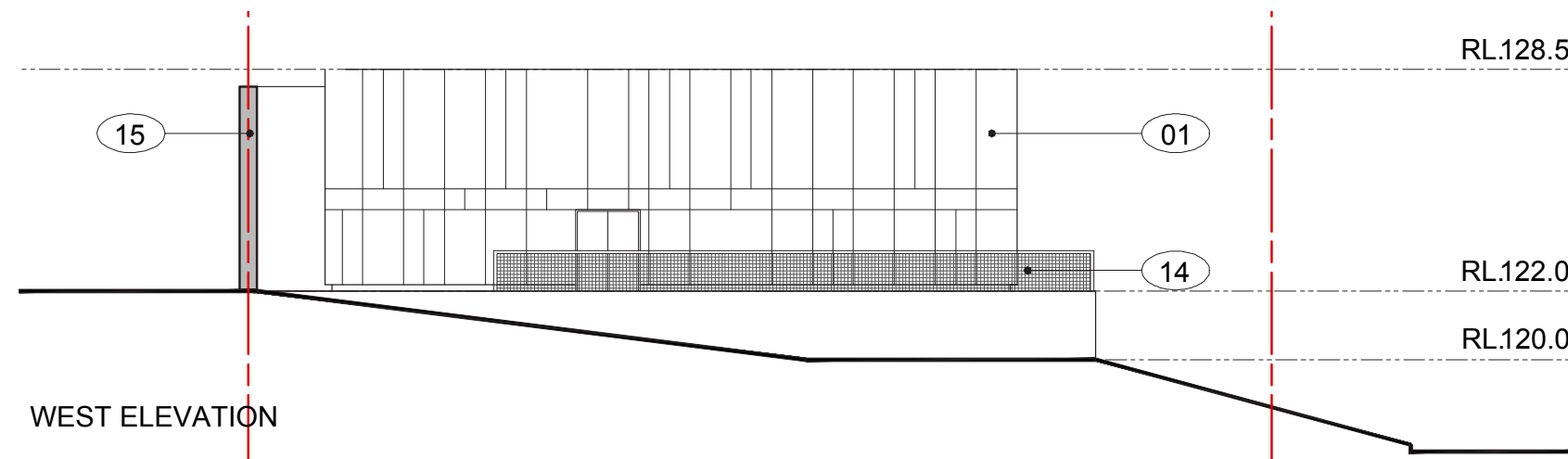
M1-M2-5000-DR-UD-0551
ENDEAVOUR ENERGY SWITCHING STATION - SITE PLAN

Artist's Impression Only



M1-M2-5000-DR-UD-0972
ENDEAVOUR ENERGY SWITCHING STATION - VIEW LOOKING EAST ALONG CORAL TREE DRIVE





SECTION A-A
Legend

- 01 GRC Panels in Various Colours
- 02 Insulated Glass - 600 x 1200 - Operable as shown
- 03 Single Panel Glass - 600 x 1200 - Operable as shown
- 04 Shed Panels Wall - Horizontal 300 ridges
- 05 Painted rendered Concrete Wall

- 06 Standard Pattern Alum Sun Screen Grating 1200 wide
- 07 Steel Structure to Engineers Requirement
- 08 Removable Alum Louver
- 09 Alum Security Screen - Match Sun Screen
- 10 Exposed Concrete - No Finish

- 11 Door to Engineers Requirements
- 12 Galv Steel Roll Up Door
- 13 Rain Harvesting Equipment
- 14 Railing - Match Sun Screen
- 15 Noise Wall (indicative)

