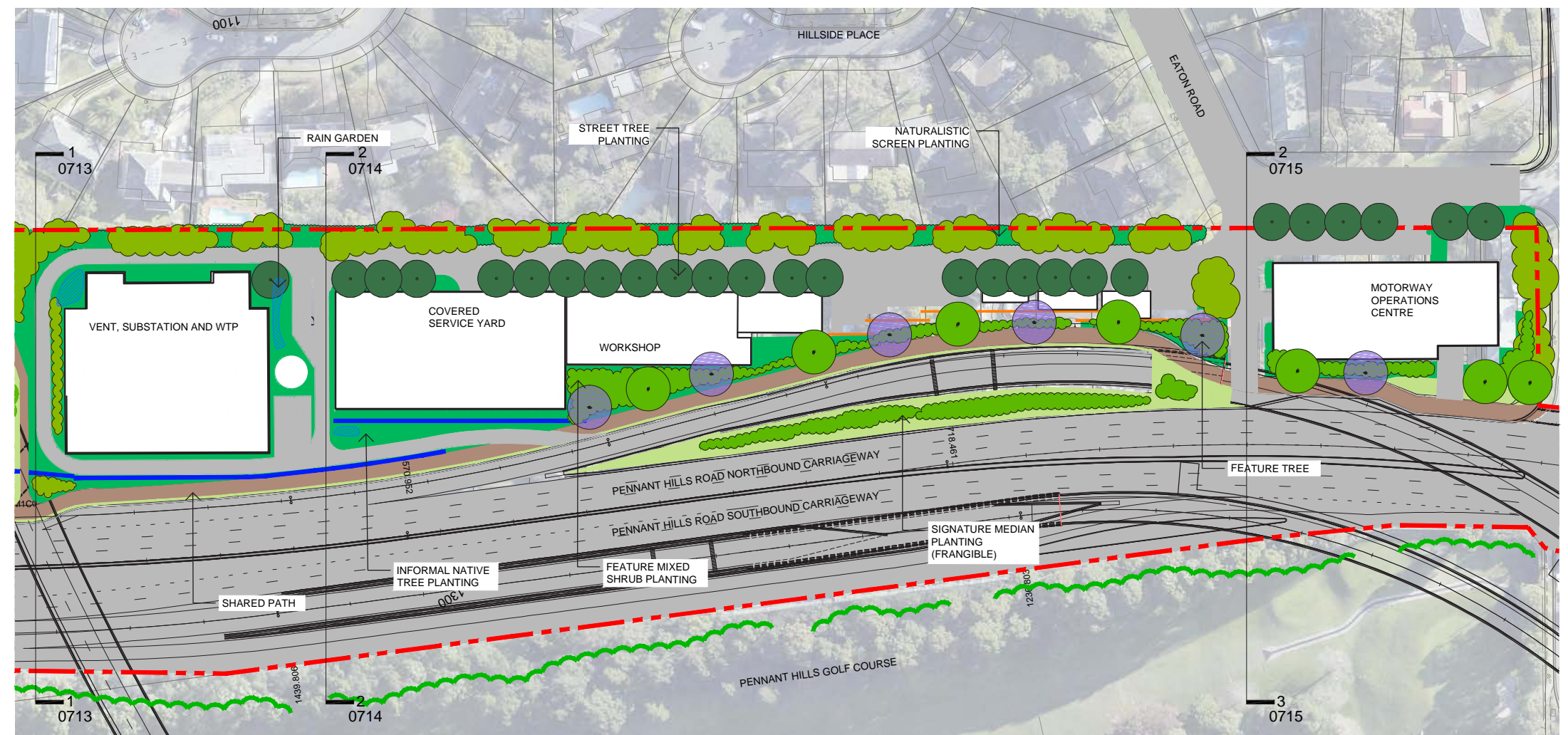


8.0 Landscape Design

8.10 Landscape Strategy - Motorway Operations Complex

Typical Strategy

- Incorporate a landscape buffer zone around the site;
- Enhance the integrity of the proposed service/access road through street tree plantings;
- Screen the proposed buildings from users of Pennant Hills Road;
- Screen the proposed structures and operational activities from residential properties to the west through mass tree and shrub planting;
- Create amenity and shade for staff and users of the buildings and improve overall visual amenity on the site;
- Create a robust, low maintenance landscape that is responsive to sight lines, safety and impacts from operational activities; and
- Use of native species to reinforce the urban parkway character of the immediate setting of the area; and
- Incorporate the use of WSUD principles within the landscape design. The installation of rain gardens and porous swales at strategic locations appropriately landscaped would be beneficial to both environmental and visual amenity.

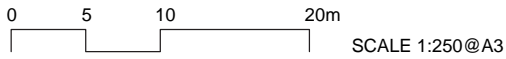
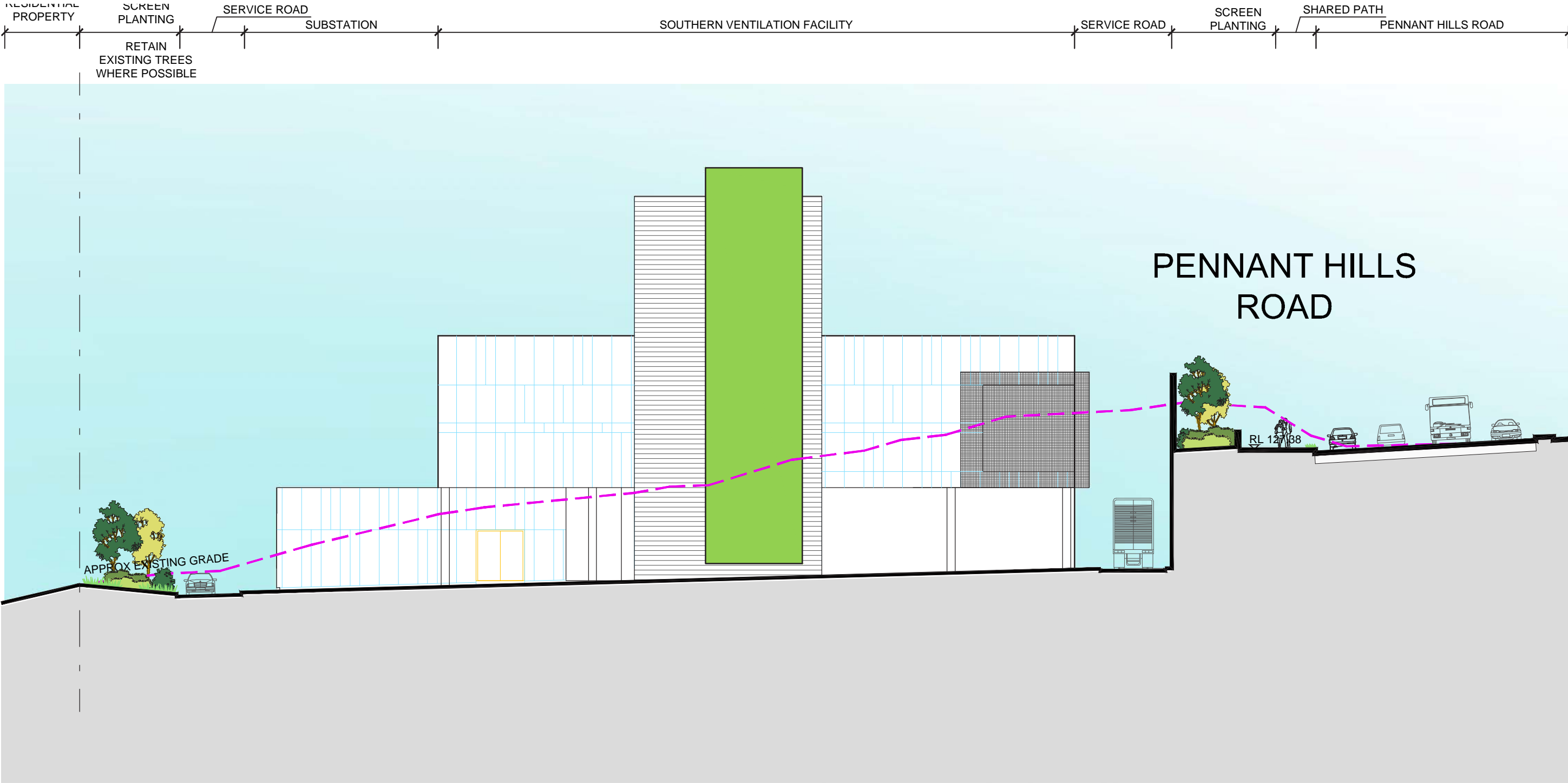


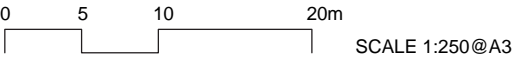
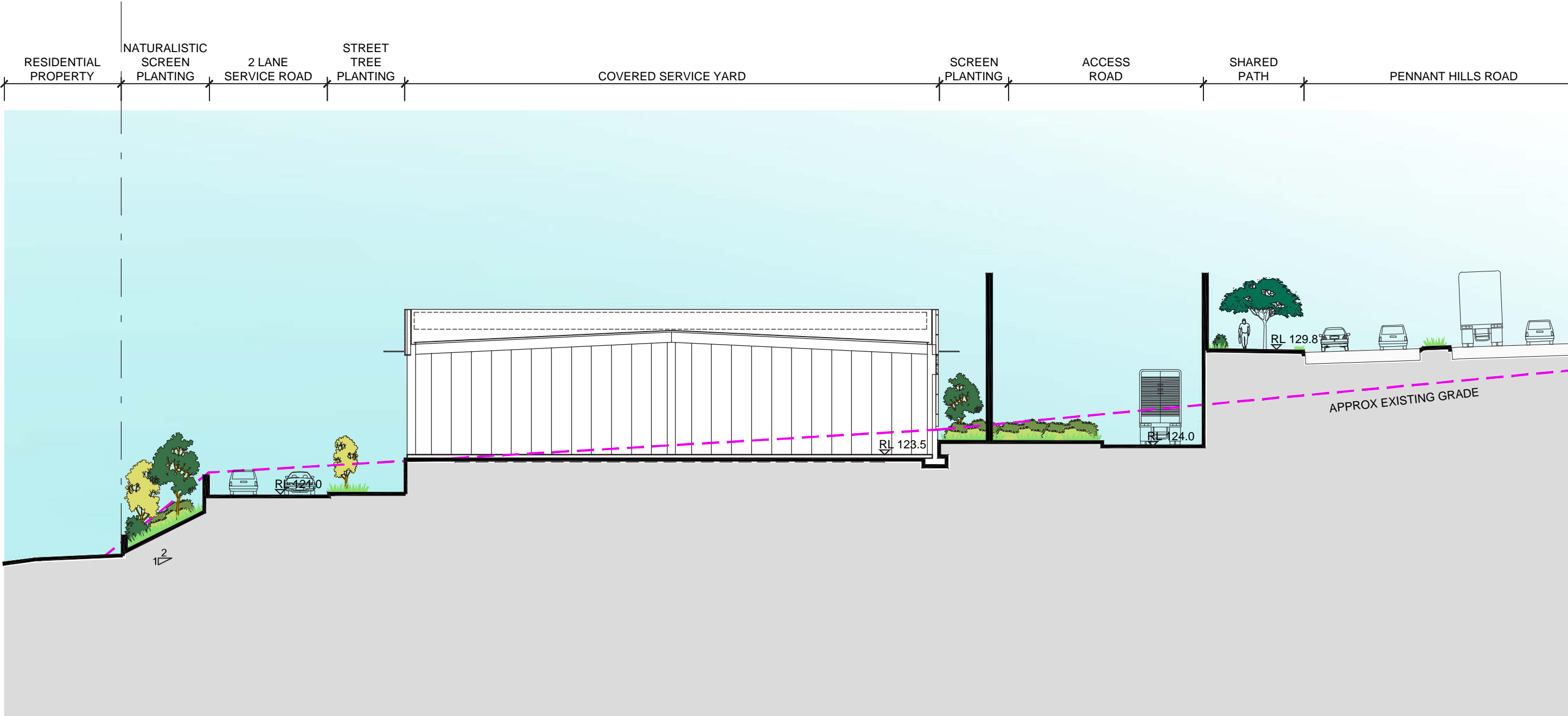
KEY

	PROJECT BOUNDARY		NATIVE MASS PLANTING OF SHRUBS AND GRASSES		STREET TREE
	PROPOSED NOISE WALL		LOW NATIVE GRASSES		FEATURE TREE
	EXISTING NOISE WALL		INFORMAL NATIVE TREE PLANTING		NATIVE FEATURE TREE
	PROPOSED RETAINING WALL		FEATURE MIXED SHRUBS		EXISTING TREE TO BE RETAINED & PROTECT
	EXISTING VEGETATION				RAIN GARDENS WHERE NATURAL FLOWS ENTER COLLECTION SYSTEM

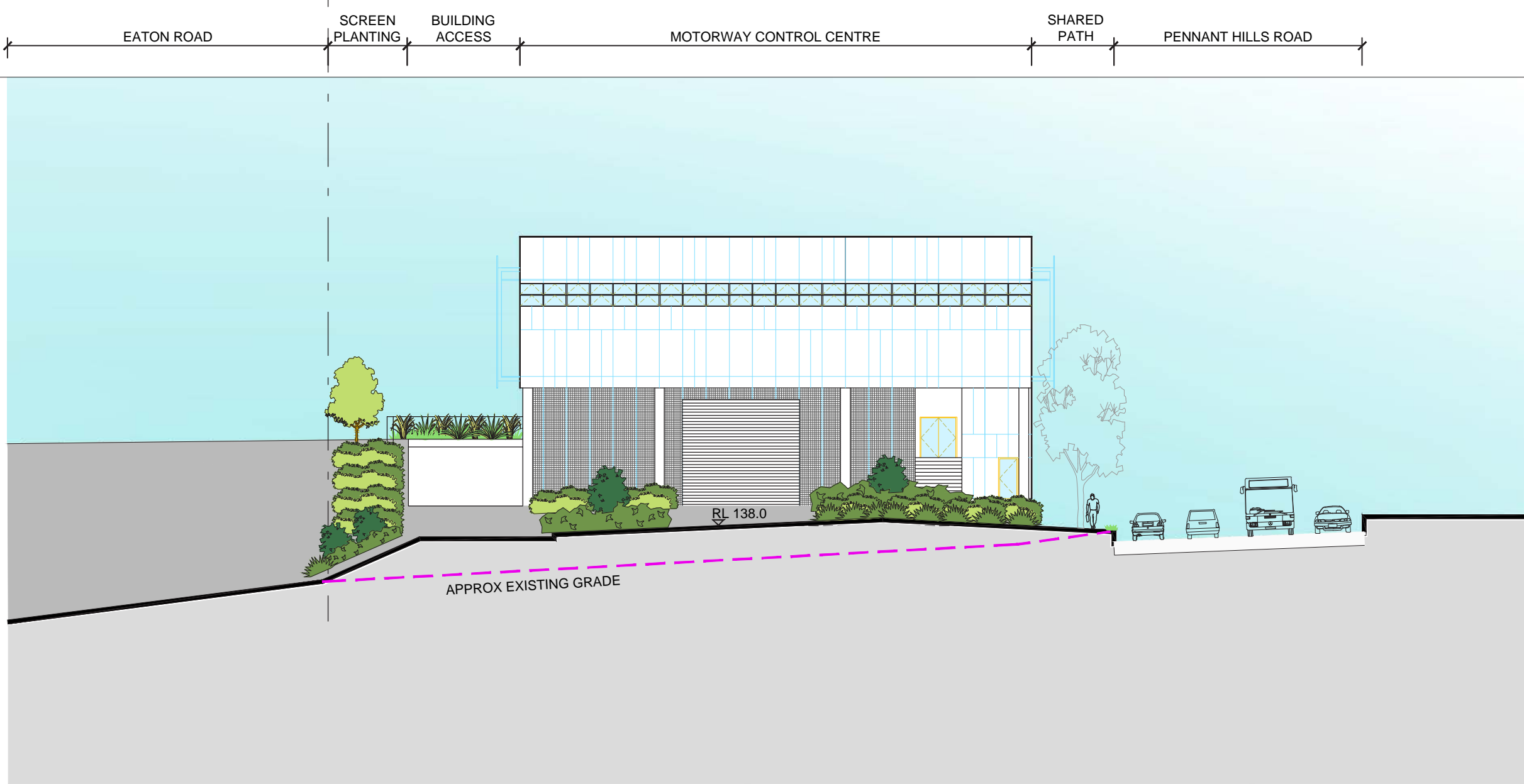
0 10 20 30 40 50m
SCALE 1:1000@A3

M1-M2-5000-DR-UD-0712
MOTORWAY OPERATIONS COMPLEX
LANDSCAPE CONCEPT PLAN





MOTORWAY OPERATIONS COMPLEX - WORKSHOP AND COVERED SERVICE YARD - LANDSCAPE SITE SECTION 2-2



8.0 Landscape Design

Southern Interchange & Motorway Control Centre (MCC) Planting Palette

SOUTH INTERCHANGE INDICATIVE PLANTING SCHEDULE						
GATEWAY FEATURE PLANTING						
Botanical Name	Common Name	Mature Height	Mature Width	Spacing	Pot Size	Staking
Signature Trees						
<i>Eucalyptus paniculata</i>	Grey Ironbark	30-45m	20m	As Shown	75L	2 x (50x50x1800)
<i>Jacaranda mimosifolia</i>	Jacaranda	10-15m	12-15m	As Shown	75L	2 x (50x50x1800)
<i>Eucalyptus saligna</i>	Sydney blue gum	30-45m	20m	As Shown	75L	2 x (50x50x1800)
<i>Syncarpia glomulifera</i>	Turpentine	30-45m	20m	As Shown	75L	2 x (50x50x1800)
Shrubs and Groundcovers						
<i>Callistemon 'Captian Cook'</i>	Bottlebrush	3-5m	1.5m	As Shown	300mm	
<i>Dianella 'Little Jess'</i>	Flax-lily	0.3m	0.3m	6/m ²	150mm	
<i>Lomandra hystrix</i>	Basket Grass	0.6m	0.6m	6/m ²	150mm	
<i>Rhaphiolepis indica</i>	India Hawthorn	4-5m	2m	As Shown	300mm	
SCREEN PLANTING						
Botanical Name	Common Name	Mature Height	Mature Width	Spacing	Pot Size	Staking
Trees						
<i>Eucalyptus paniculata</i>	Grey Ironbark	30-45m	20m	As Shown	75L	2 x (50x50x1800)
<i>Eucalyptus pilularis</i>	Blackbutt	30-45m	20m	As Shown	75L	2 x (50x50x1800)
<i>Eucalyptus saligna</i>	Sydney blue gum	30-45m	20m	As Shown	75L	2 x (50x50x1800)
<i>Syncarpia glomulifera</i>	Turpentine	30-45m	20m	As Shown	75L	2 x (50x50x1800)
Shrubs and Groundcovers						
<i>Banksia integrifolia</i>	Coast Banksia	6m	3m	As Shown	300mm	
<i>Callistemon 'Captian Cook'</i>	Bottlebrush	3-5m	1.5m	As Shown	300mm	
<i>Callistemon viminalis</i>	Weeping Bottlebrush	3-5m	1.5m	As Shown	300mm	
<i>Dianella caerulea</i> var <i>caerulea</i>	Flax-lily	0.3m	0.3m	6/m ²	150mm	
<i>Grevillea 'Poorinda Royal Mantle'</i>	Royal Mantle'	.3m	4m	As Shown	300mm	
<i>Lomandra longifolia</i>	Mat-rush	1m	1m	4/m ²	150mm	
<i>Hardenbergia violacea</i>	Purple coral pea	.75m	1.5m	4/m ²	150mm	
<i>Lomandra hystrix</i>	Basket Grass	0.6m	0.6m	6/m ²	150mm	
MEDIAN PLANTING						
Botanical Name	Common Name	Mature Height	Mature Width	Spacing	Pot Size	
Shrub planting						
<i>Callistemon 'Captian Cook'</i>	Bottlebrush	3-5m	1.5m	As Shown	300mm	
<i>Callistemon viminalis</i>	Weeping Bottlebrush	3-5m	1.5m	As Shown	300mm	
<i>Rhaphiolepis indica</i>	India Hawthorn	4-5m	2m	As Shown	300mm	
Native Grasses and Groundcovers						
<i>Dianella revoluta</i>	Flax-lily	0.3m	0.3m	6/m ²	150mm	
<i>Lomandra longifolia</i>	Mat-rush	1m	1m	4/m ²	150mm	
<i>Trachelospermum jasminoides</i>	Star Jasmine	0.2m	0.2m	6/m ²	150mm	



Jacaranda mimosifolia



Eucalyptus saligna



Rhaphiolepis indica



Callistemon citrinus 'Captian Cook'.



Banksia integrifolia



Hakea dactyloides



Trachelospermum jasminoides



Dianella caerulea

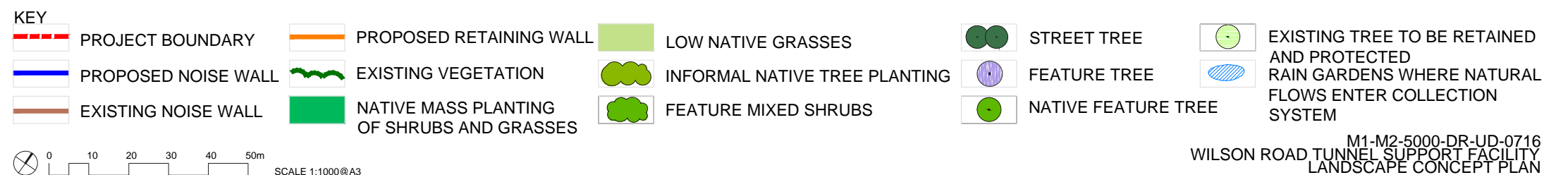
8.0 Landscape Design

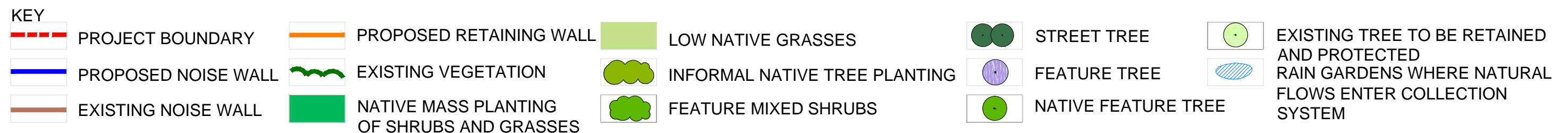
8.11 Landscape Strategy - Wilson Road Tunnel Support Facility

Typical Strategy

Incorporate a landscape buffer zone around the site

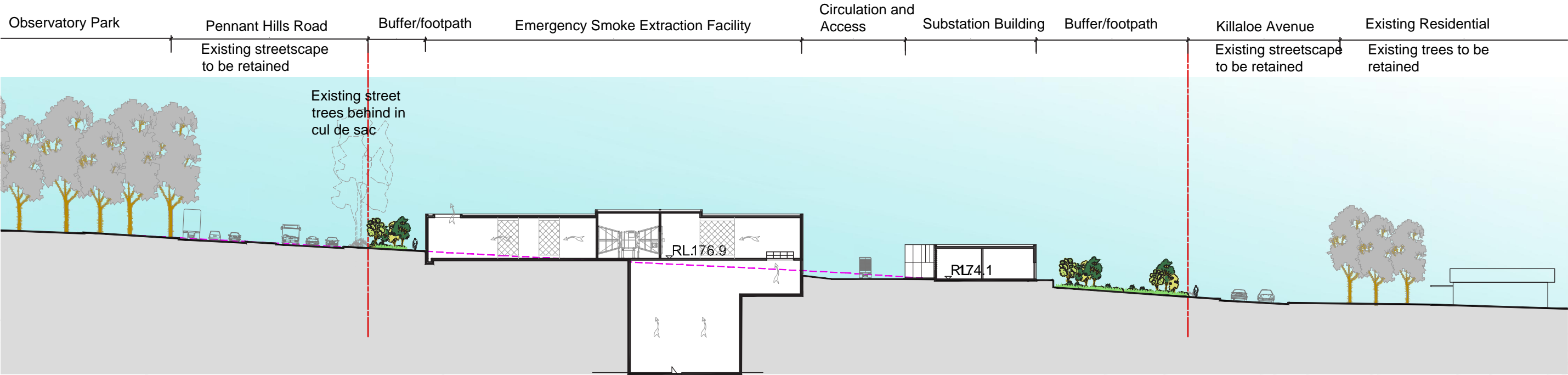
- Use of varying levels of planting including ground covers, shrubs, climbers and trees;
- Complement and reinforce the architectural design of the structure;
- Screen the structure from surrounding residential properties;
- Enhance integrity of adjacent streetscapes through street tree planting;
- Naturalistic mass planting in character of Observatory Park;
- Use of robust, frangible planting around service areas to allow safe vehicular and pedestrian movement and access and withstand potential impacts from operational activities; and
- Retain and protect existing mature trees within Wilson Road verge and along site boundary.





NorthConnex | May 2014 | 181

8.0 Landscape Design



0 6 12 18 24 30m
SCALE 1:600@A3

M1-M2-5000-DR-UD-0717
WILSON ROAD TUNNEL SUPPORT FACILITY - SECTION

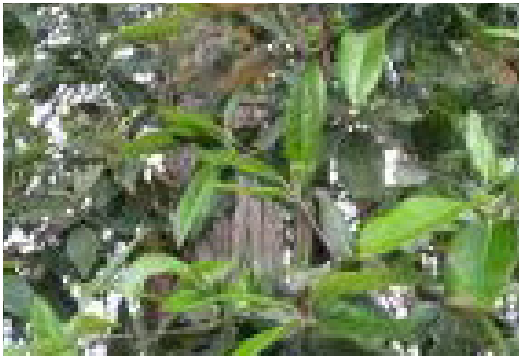
8.0 Landscape Design

Wilson Road Tunnel Support Facility Planting Palette

WILSON ROAD TUNNEL SUPPORT FACILITY INDICATIVE PLANTING SCHEDULE						
SYDNEY BLUE GUM HIGH FOREST AND SYDNEY TURPENTINE - IRONBARK FOREST REGENERATION SCREEN PLANTING						
Botanical Name	Common Name	Mature Height	Mature Width	Spacing	Pot Size	Staking
Trees						
<i>Backhousia myrtifolia</i>	Grey Myrtle	10-25m	15m	As shown	75L	2x (50 x 50 x 1800)
<i>Eucalyptus paniculata</i>	Grey Ironbark	30-45m	20m	As Shown	75L	2x (50 x 50 x 1800)
<i>Eucalyptus pilularis</i>	Blackbutt	30-45m	20m	As Shown	75L	2x (50 x 50 x 1800)
<i>Eucalyptus saligna</i>	Sydney Blue Gum	30-45m	20m	As Shown	75L	2x (50 x 50 x 1800)
<i>Syncarpia glomulifera</i>	Turpentine	30-45m	20m	As Shown	75L	2x (50 x 50 x 1800)

Shrubs and Groundcovers						
<i>Banksia integrifolia</i>	Coast Banksia	6m	3m	As Shown	300mm	
<i>Callicoma serratifolia</i>	Black Wattle	15m	8m	As Shown	300mm	
<i>Elaeocarpus reticulatus</i>	Blueberry Ash	8-12m	5-8m	As Shown	300mm	
<i>Dianella caerulea</i>	Flax-lily	0.3m	0.3m	6/m ²	150mm	
<i>Melaleuca nodosa</i>	Prickly-leaved Paperbark	2-4m	1.5m	As Shown	300mm	
<i>Lomandra confertifolia</i>	Mat-rush	0.6m	0.6m	6/m ²	150mm	
<i>Hardenbergia violacea</i>	Purple Coral Pea	0.75m	1.5m	4/m ²	150mm	
<i>Lomandra hystrix</i>	Basket Grass	0.6m	0.6m	6/m ²	150mm	
<i>Syzygium smithii</i>	Lilly Pilly	8-15m	5-8m	As Shown	300mm	

STREET TREE PLANTING						
Botanical Name	Common Name	Mature Height	Mature Width	Spacing	Pot Size	Staking
Trees						
<i>Eucalyptus pilularis</i>	Blackbutt	30-45m	20m	As Shown	75L	2x (50 x 50 x 1800)
<i>Lophostemon confertus</i>	Brushbox	30-45m	20m	As Shown	75L	2x (50 x 50 x 1800)



Syncarpia glomulifera



Elaeocarpus reticulatus



Melaleuca nodosa



Lomandra hystrix



Eucalyptus saligna



Backhousia myrtifolia



Callicoma serratifolia



Dianella caerulea
















8.0 Landscape Design

8.12 Landscape Strategy - Trelawney Street Tunnel Support Facility

Typical Strategy

- Incorporate a landscape buffer zone around the site;
- Use of varying levels of planting including ground covers, shrubs, climbers and trees;
- Complement and reinforce the architectural design of the structure;
- Screen the structure from surrounding residential properties;
- Enhance integrity of adjacent streetscapes through street tree planting;
- Naturalistic mass planting in character of the surrounding area;
- Use of robust, frangible planting around service areas to allow safe vehicular and pedestrian movement and access and withstand potential impacts from operational activities; and
- Retain and protect existing mature trees within Trelawney Street verge and along site boundary



KEY									
	PROJECT BOUNDARY		PROPOSED RETAINING WALL		LOW NATIVE GRASSES		STREET TREE		EXISTING TREE TO BE RETAINED
	PROPOSED NOISE WALL		EXISTING VEGETATION		INFORMAL NATIVE TREE PLANTING		FEATURE TREE		AND PROTECTED
	EXISTING NOISE WALL		NATIVE MASS PLANTING OF SHRUBS AND GRASSES		FEATURE MIXED SHRUBS		NATIVE FEATURE TREE		RAIN GARDENS WHERE NATURAL FLOWS ENTER COLLECTION SYSTEM

0 10 20 30 40 50m
SCALE 1:1000 @A3

M1-M2-5000-DR-UD-0718
TRELAWNEY STREET TUNNEL SUPPORT FACILITY
LANDSCAPE CONCEPT PLAN