

Artist's Impression Only



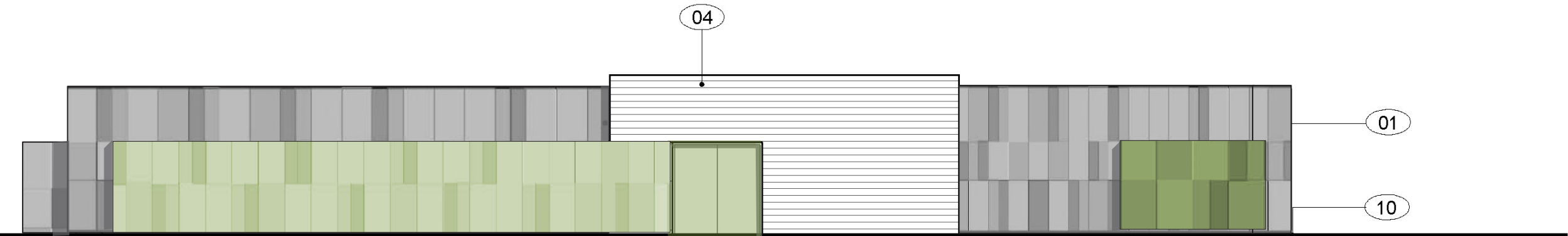
M1-M2-5000-DR-UD-0997  
WILSON ROAD TUNNEL SUPPORT FACILITY - VIEW LOOKING SOUTH FROM WILSON ROAD



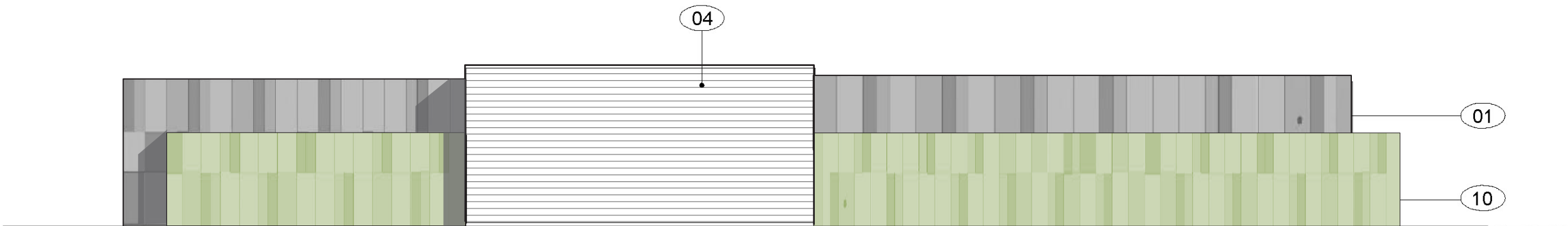


KILLALOE AVENUE ELEVATION  
(From Internal Driveway)

PENNANT HILLS ROAD ELEVATION



WILSON ROAD ELEVATION



NEIGHBOURHOOD ELEVATION

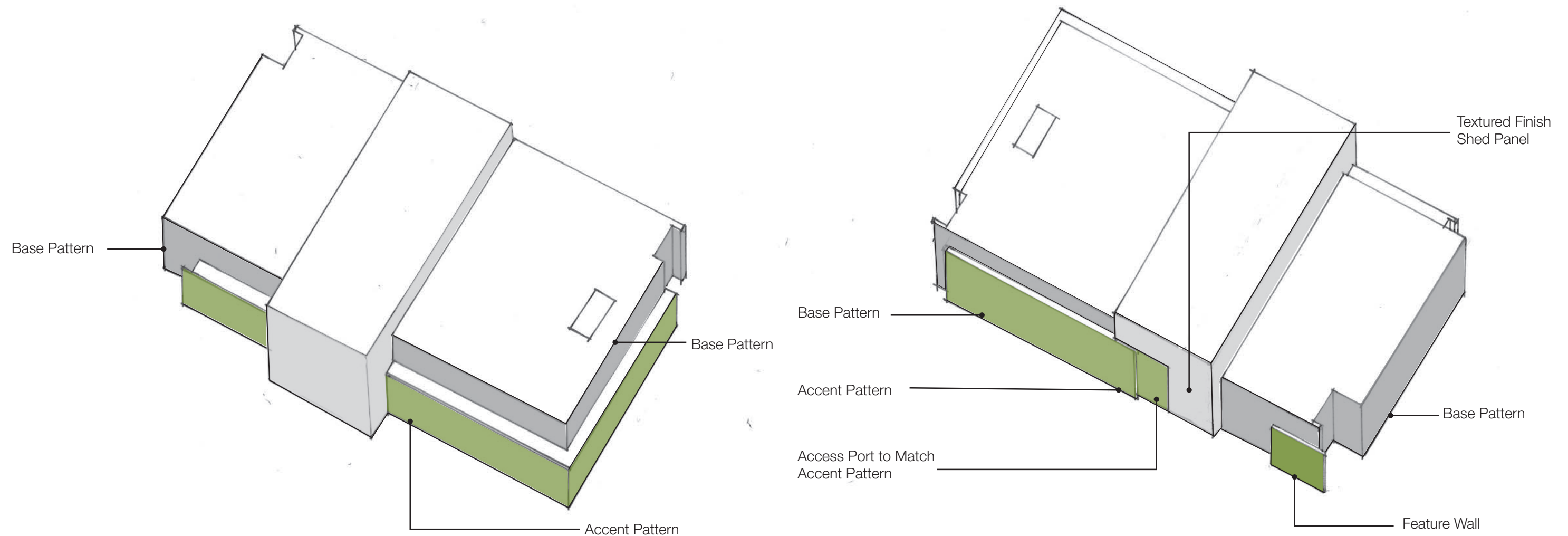
Legend

- 01 GRC Panels in Various Colours
- 02 Insulated Glass - 600 x 1200 - Operable as shown
- 03 Single Panel Glass - 600 x 1200 - Operable as shown
- 04 Shed Panels Wall - Horizontal 300 ridges

- 05 Painted rendered Concrete Wall
- 06 Standard Pattern Alum Sun Screen Grating 1200 wide
- 07 Steel Structure to Engineers Requirement
- 08 Removable Alum Louver

- 09 Alum Security Screen - Match Sun Screen
- 10 Exposed Concrete - No Finish
- 11 Door to Engineers Requirements
- 12 Galv Steel Roll Up Door
- 13 Rain Harvesting Equipment

## 6.0 Operational Ancillary Facilities







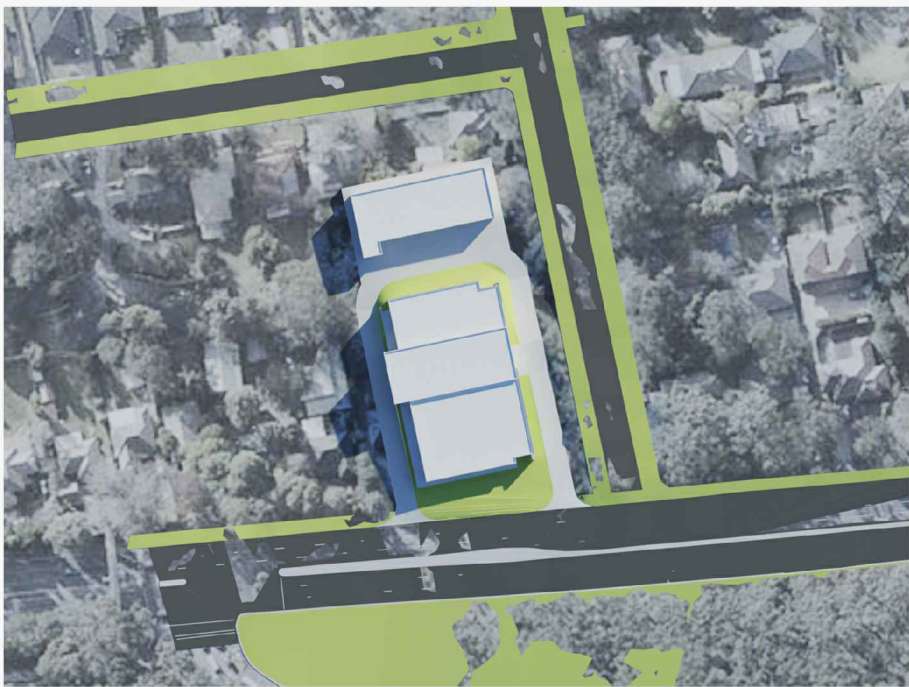
March 22 0900



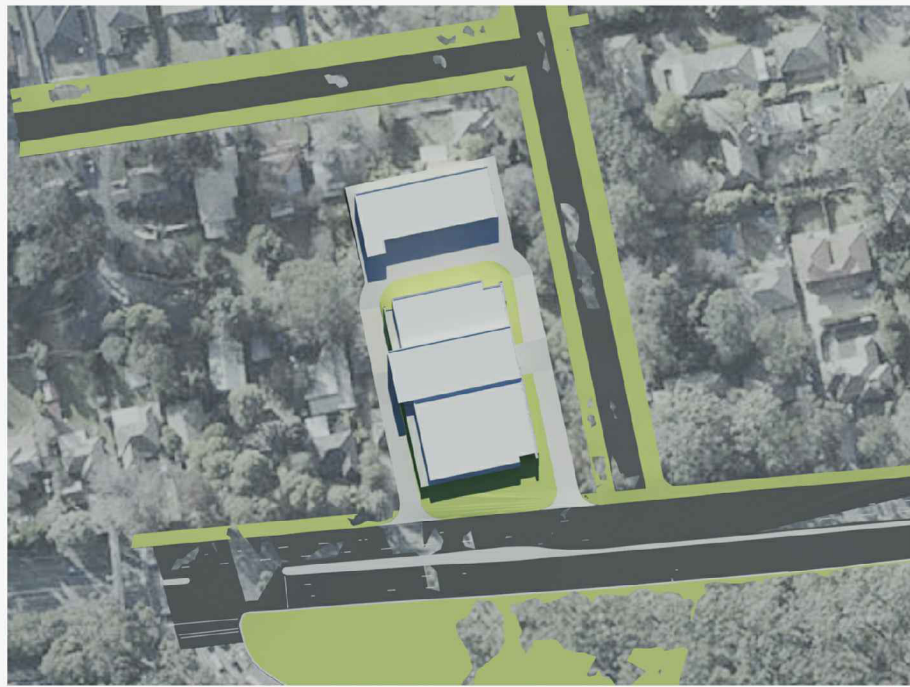
March 22 1200



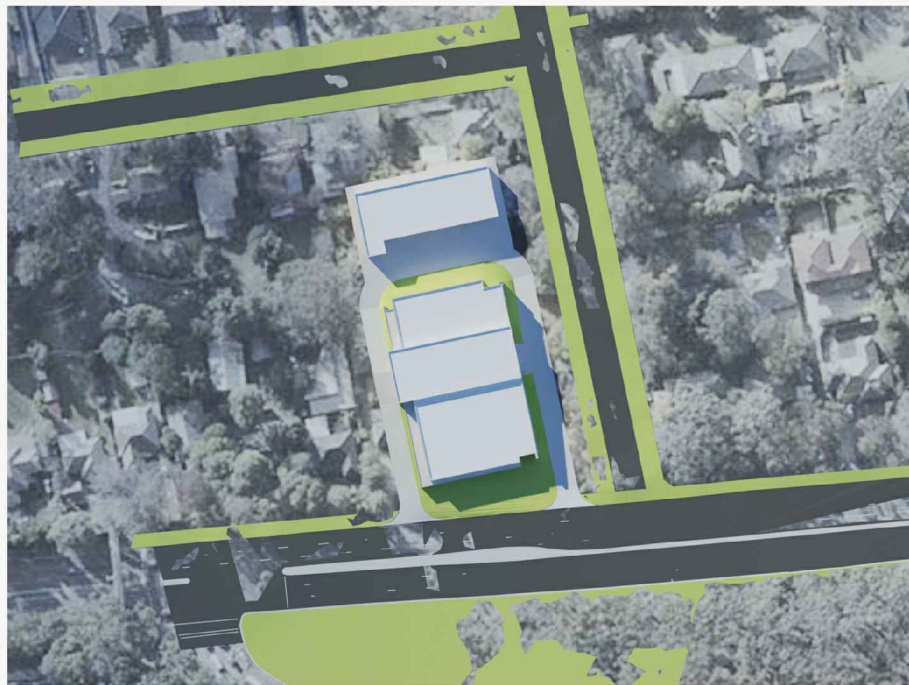
March 22 1500



June 21 0900



June 21 1200



June 21 1500

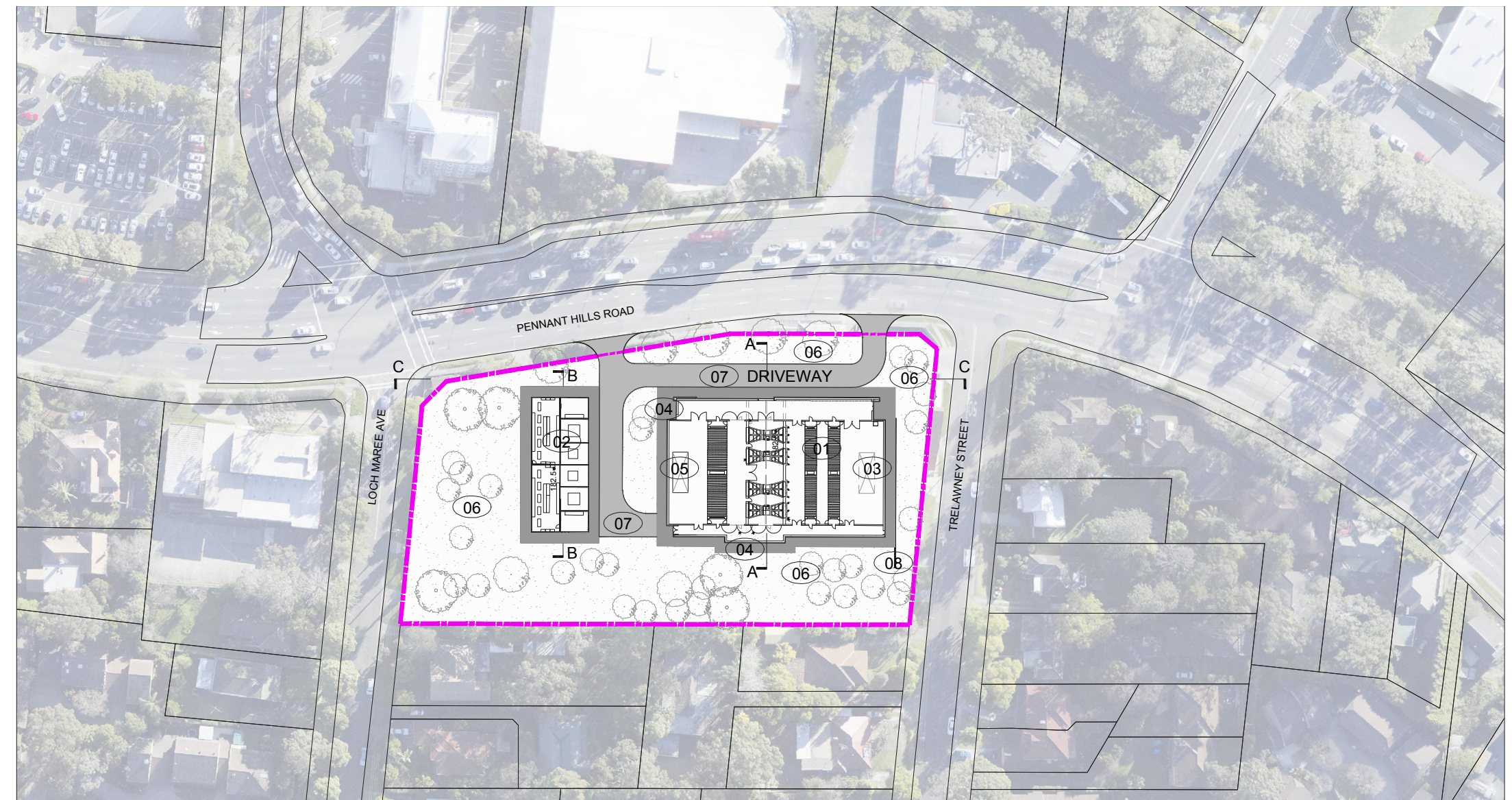


# 6.0 Operational Ancillary Facilities

## 6.12 Trelawney Street Tunnel Support Facility

The tunnel support facility located at Trelawney Street is intended to serve the northern portion of the tunnel. It contains an emergency smoke extraction facility and an adjacent substation. It has the following features:

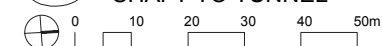
- The site is organised with the emergency smoke extraction facility located along Pennant Hills Road to the north, with the substation to the south;
- The substation covers an area of approximately 500m<sup>2</sup>;
- The emergency smoke extraction facility covers an area of approximately 1,800m<sup>2</sup>;
- The built form typology is a single storey layout with the emergency smoke extraction facility and the substation building floor level at RL182.5;
- The landform is cut into the existing ground to RL182.5 to house the footprints of the buildings and continue to follow the existing ground profile beyond. A retaining wall is provided along the western edge of the buildings;
- The site is more visible from the south due to the configuration of Pennant Hills Road and landscape would provide some screening for this view. Significant landscape buffers have been maintained around the facilities and along the sloped landform to the east;
- Site access would be from Pennant Hills Road, accessed from the north with exiting continuing south to Loch Maree Avenue;
- Finishes include GRC panels in various colours and sizes to provide a pattern that reduces the visual bulk of the building, provides for a more fine grained scale and reduces its utilitarian appearance; and
- Building massing has been developed to provide an appearance of a group of several smaller buildings gathered together;
- Building colouring has been developed to further emphasis the building modulation.



- 01 EMERGENCY SMOKE EXTRACTION FACILITY
- 02 SUBSTATION BUILDING
- 03 EMERGENCY SMOKE EXTRACTION OUTLET
- 04 FOOTPATH / HARDSTAND AREA
- 05 SHAFT TO TUNNEL

- 06 LANDSCAPE / BUFFER ZONES (INDICATIVE)
- 07 CIRCULATION AND ACCESS

- 08 RETAINING WALL



SCALE 1:1000@A3

LANDSCAPE SHOWN IS INDICATIVE

M1-M2-5000-DR-UD-0535  
TRELAWNEY STREET TUNNEL SUPPORT FACILITY - SITEPLAN