



Australian Government

BUILDING OUR FUTURE



August 2017

Using rock from Moonimba to build the Woolgoolga to Ballina Pacific Highway upgrade

The Australian and NSW governments are jointly funding the \$4.36 billion Woolgoolga to Ballina Pacific Highway upgrade. Roads and Maritime Services Pacific Highway Project Office and Pacific Complete are working together to deliver the project.

The Woolgoolga to Ballina project team is proposing to use rock from the Moonimba quarry site (also known as Robinsons Quarry) on Old Boggy Creek Road, Bungawalbin to build the upgrade.

Roads and Maritime Services is seeking approval from the NSW Department of Planning and Environment to remove 800,000 cubic metres of rock over two years for the upgrade. This is being sought under the project's existing Conditions of Approval. To prepare for work we will:

- Remove vegetation
- Establish site offices and amenities
- Install plant and equipment
- Install environmental controls.

Excavation, drilling and blasting will be used to extract material from the site. The material will then be crushed and screened to make it a uniform size and shape that meets road building specifications. Work activities involve:

- Operating machines and equipment within the site
- Excavating, drilling and blasting
- Crushing and stockpiling rock material
- Hauling the material from the site to the project's work areas.

How will the work affect you?

There will be noise when we are working at this site. To manage noise we will, wherever possible:

- Minimise the numbers of plant and equipment operating at the same time and direct them away from residential properties
- Only carry out blasting:
 - From 9am to 5pm between Monday and Friday
 - From 9am to 1pm on Saturday
 - At no time on Sunday or public holidays.
- Monitor noise and use natural features and site structures to shield noise.

How will traffic be managed?

Heavy vehicles will travel along existing haulage routes and traffic will be managed in accordance with the project's Traffic and Access Management Plan. It is estimated that at peak periods there will be about 300 heavy vehicle movements per day. To manage this increase we will, wherever possible:

- Reduce speed limits along local roads, if required
- Maintain local roads during the use of the site
- Carry out any required improvements to local roads or intersections before starting haulage.

We have included a map to show the site's location and haulage routes to the project boundary. This haulage route will split heavy vehicle movements to different parts of the site so that not all vehicles will travel through Woodburn.

Work hours

Typically work will be carried out during the project's approved construction hours, which are **from Monday to Friday between 7am and 6pm** and on **Saturday between 8am and 5pm**.

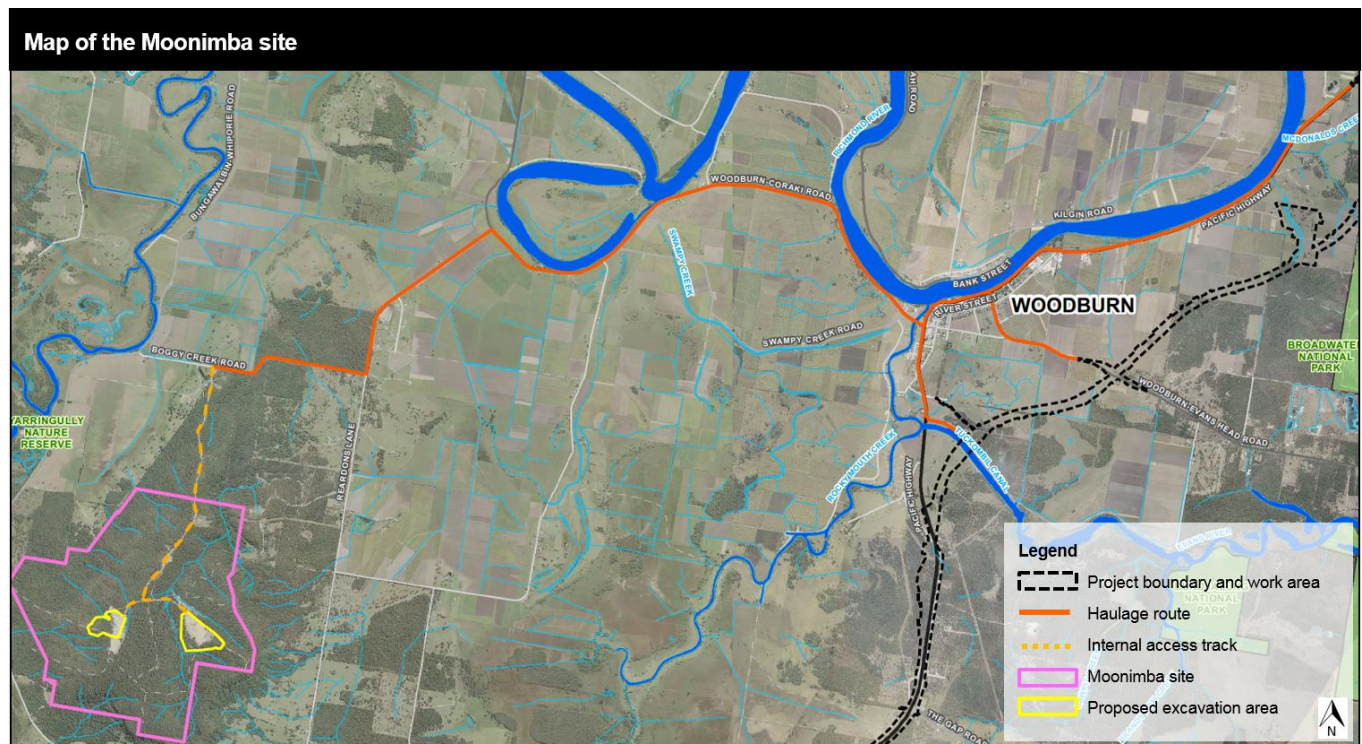
Next steps

The Department of Planning and Environment will display this proposal for public comment. This is expected to take place later this year. The Woolgoolga to Ballina project team will hold an information session and keep the community updated.

For more information

If you have any questions, please contact the Woolgoolga to Ballina project on 1800 778 900 dial 1, W2B@pacificcomplete.com.au or visit the project website rms.nsw.gov.au/W2B.

We apologise for any inconvenience and thank you for your patience during this important work.



If you need help understanding this information, please contact the Translating and Interpreting Service on 131 450 and ask them to call us on 1800 778 900.