

# Appendix D

## Stakeholder and community engagement

## Table of Contents

Newsletter (September 2020)  
Project overview booklet (September 2020)  
Community survey (July 2020)  
Newsletter (June 2020)  
Community survey (February - March 2020)  
Aboriginal stakeholder consultation newspaper advertisement (May 2019)

## Newsletter (September 2020)



Australian Government



**Sydney Metro –  
Western Sydney Airport**



An artist's impression of Airport Terminal Station.

# Station locations confirmed for Greater Western Sydney's new metro railway line

**The new metro railway line between St Marys and Western Sydney Aerotropolis will become the transport spine for the Greater Western Sydney region.**

The exact station locations for the Sydney Metro – Western Sydney Airport project have now been confirmed. There will be stations at:

- St Marys
- Orchard Hills
- Luddenham
- Airport Business Park
- Airport Terminal
- Western Sydney Aerotropolis.

This city-shaping metro rail project will support nationally-significant growth in Western Sydney, with fast and efficient access between existing and future residential centres and employment hubs across Greater Sydney.

The project will provide essential rail connection to service the new Western Sydney International (Nancy-Bird Walton) Airport and support planned growth for Western Sydney Aerotropolis and other future commercial and residential precincts.

Sydney Metro will make it easier and faster to get around, boosting economic productivity by supporting new jobs and educational opportunities closer to home.

The project will provide a major economic stimulus in the heart of Western Sydney, supporting 14,000 jobs during construction, with more than 250 new apprenticeships on offer.

Construction is planned to start in late 2020.

## Inside

**New stations for a new city**

**Designing new stations**

**Tunnelling, supporting services and infrastructure**

**The customer is at the centre**

**Working with the community**

**Placemaking and station precincts**

**Early investigations**

**Next steps**



# New stations for a new city

Sydney Metro has been working with stakeholders and industry to create a project that will deliver a fast, safe and reliable metro, supporting the success of the future Western Parkland City and connecting the region to the rest of Sydney.

## 1 St Marys metro Station



The proposed St Marys metro Station would be located under the existing Sydney Trains suburban rail station at St Marys and would have two entrances, one on Station Street and one on Harris Street.

It would provide easy, efficient and accessible interchange with the existing T1 Western Line.

The station would include a new concourse bridge that would connect north and south of the station precinct.

## 2 Orchard Hills Station



The proposed Orchard Hills Station would be located on the eastern side of Kent Road, north of Lansdowne Road.

The station would have one entrance on Kent Road with provision for a second entrance east of the station.

The station would service a future residential, commercial and mixed-use precinct.

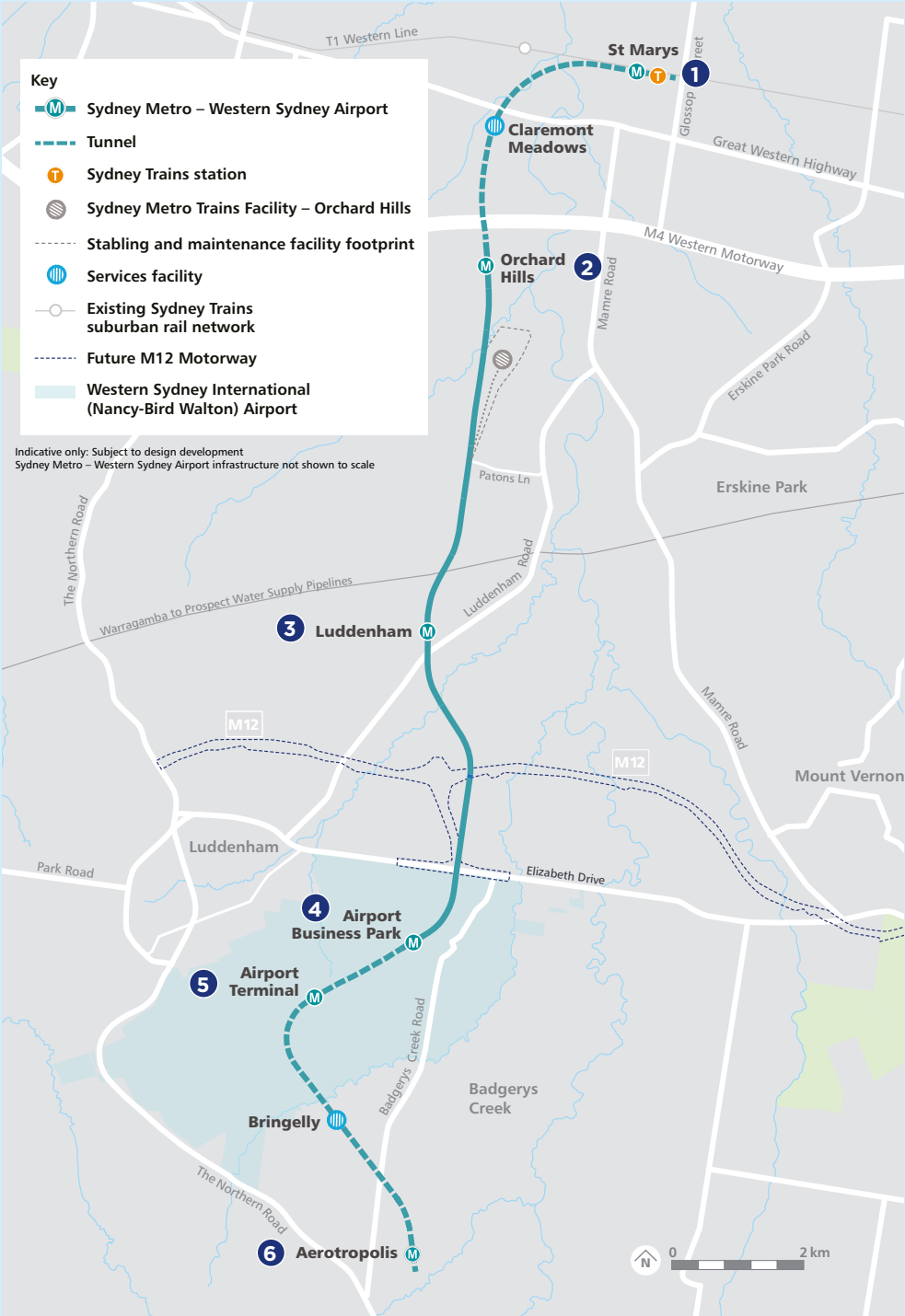
## 3 Luddenham Station



The proposed Luddenham Station would be located near Luddenham Road, between the Warragamba pipeline and the new airport.

The station would have one entrance on the western side of the station's platforms.

The station would be designed to support the future employment, research and knowledge-based employment precinct in Luddenham, along with mixed-use residential development.



Project alignment.

## 4 Airport Business Park Station



The proposed Airport Business Park Station would be located south of Elizabeth Drive in the centre of the Western Sydney International airport precinct.

The Airport Business Park Station precinct will become a major employment and services hub within the Western Economic Corridor.

The metro station would become a key interchange for customers working in the business park.

## 5 Airport Terminal Station



The proposed Airport Terminal Station would enable easy and efficient customer access to the new Western Sydney International airport.

The station would open opportunities for Greater Western Sydney and connect it to the rest of the world.

## 6 Aerotropolis Station



The proposed Aerotropolis Station would be located east of Badgerys Creek Road, serving the commercial heart of Western Sydney Aerotropolis.

There would be two entrances – one on the eastern side and the other on the western side of the station.

Aerotropolis Station would become a major transport interchange, providing important connectivity to the future new central business district of the Western Parkland City.





Hills Showground Station, Metro North West Line.

### Designing new stations

Stations are designed to be an easy part of daily journeys.

State-of-the-art technology keeps customers connected – from planning a journey from home using smartphone travels apps to real-time information at metro stations and on board trains.

All stations are designed to reflect the character of the local areas they serve and, where possible, include environmentally friendly features such as solar panels, natural light and ventilation.

New metro services will be integrated with other transport modes, including interchanges with Sydney suburban rail as well as buses, light rail and ferries.

Customer safety is the number one priority for Australia's first fully-automated railway.

At all times, a team of expert train controllers will monitor the system, making sure everything runs smoothly.

### Tunnelling, supporting services and infrastructure

Twin metro tunnels will be built between the St Marys and Orchard Hills stations and between Airport Terminal and Aerotropolis stations.

It is anticipated that tunnel boring machines would be launched from sites at Orchard Hills and Airport Business Park.

Services facilities are proposed to be built at Claremont Meadows and Bringelly to provide fresh air ventilation into the tunnels and the emergency exits out of them.

Sydney Metro will also build a stabling facility at Orchard Hills to stable the trains and house the maintenance and operations facility required to run this world-class driverless metro railway.

The new airport line will be controlled from the Sydney Metro Trains Facility – Orchard Hills.



The Sydney Metro Trains Facility at Rouse Hill on the Metro North West Line.





An artist's impression of Orchard Hills Station.

## The customer is at the centre

The new metro rail system will be an easy part of daily journeys. Technology will keep customers connected at all stages of their journey – from smart phone travel apps, to real-time journey information at metro stations and on board trains.

This door-to-door approach will help customers achieve their daily tasks, whether it's getting to work, meetings, school or education, sport, a day out or running errands – and, of course, getting home. Making it easy for customers at each stage of their journey is integral to the successful delivery of Sydney Metro.

Linking communities, schools, hospitals, key destinations and businesses with the new metro system is key to attracting and keeping customers as well as in meeting broader transport and land use objectives.

Sydney Metro will work across government and with the community to get customers to and from metro stations easily.

## Working with the community

Sydney Metro has dedicated community relations specialists called place managers who act as a point of contact between local communities and stakeholders on behalf of Sydney Metro.

Dedicated place managers have been available during early consultation and will continue to be available during the design and delivery of the project.



A Sydney Metro community event.

## Placemaking and station precincts

The Sydney Metro – Western Sydney Airport project is a chance to build more than just railway stations. Through excellence in design and delivery, Sydney Metro will deliver places that:

- respond to the community's needs
- are architecturally unique and easy to get around
- are intuitive and safe, and promote people's health and wellbeing
- are active and vibrant with a mix of uses and activities.

Through use of urban design principles and placemaking, Sydney Metro precincts will be more than somewhere to catch the train – they will become the centre of communities and provide for a variety of uses.

Sydney Metro will work closely with communities and stakeholders on how best to integrate stations that are thriving, welcoming hubs for everyone to enjoy, with new places for people to live, work, shop and play – and public spaces designed to encourage walking, cycling and social interaction.

## Early investigations

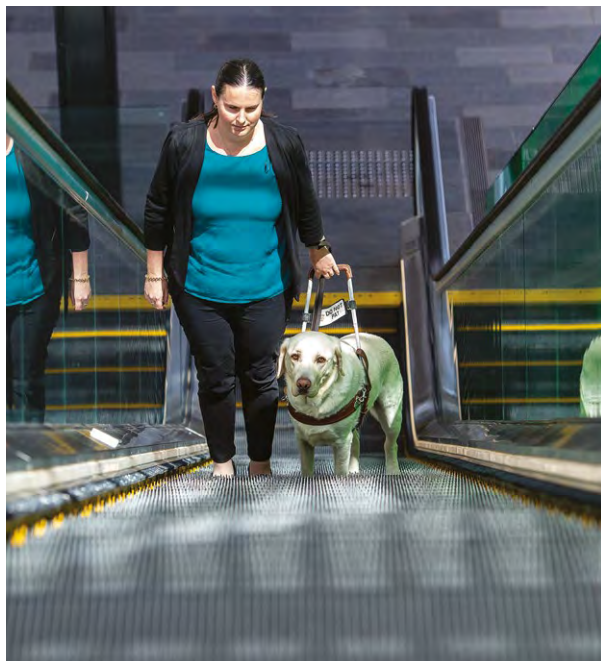
Sydney Metro is continuing to undertake site investigations along the project alignment to assist with the planning and design of the railway and stations. Activities include geotechnical investigations, noise monitoring and heritage and ecology surveys. The community will be notified in advance of works.

Sydney Metro will continue to undertake work across its projects in accordance with current government advice, and will continue to implement social distancing and travel and hygiene measures to protect members of the community and employees. Continuing with works is critical to ensuring project continuity, and the project team will review and assess activities in line with any further updates.

## Sydney Metro is Australia's first fully accessible railway

The metro public transport product has been designed to deliver safe, clean, comfortable services which will run on time, and are convenient, efficient, accessible and easy for customers to use.

Sydney Metro stations are fully accessible for people with reduced mobility, people with prams and children. This includes level access between platforms and trains and lifts at all stations.



Sydney Metro is Australia's first fully accessible railway.





### Next steps

The Sydney Metro – Western Sydney Airport project team will develop detailed planning and environmental assessment documents for public exhibition and community consultation.

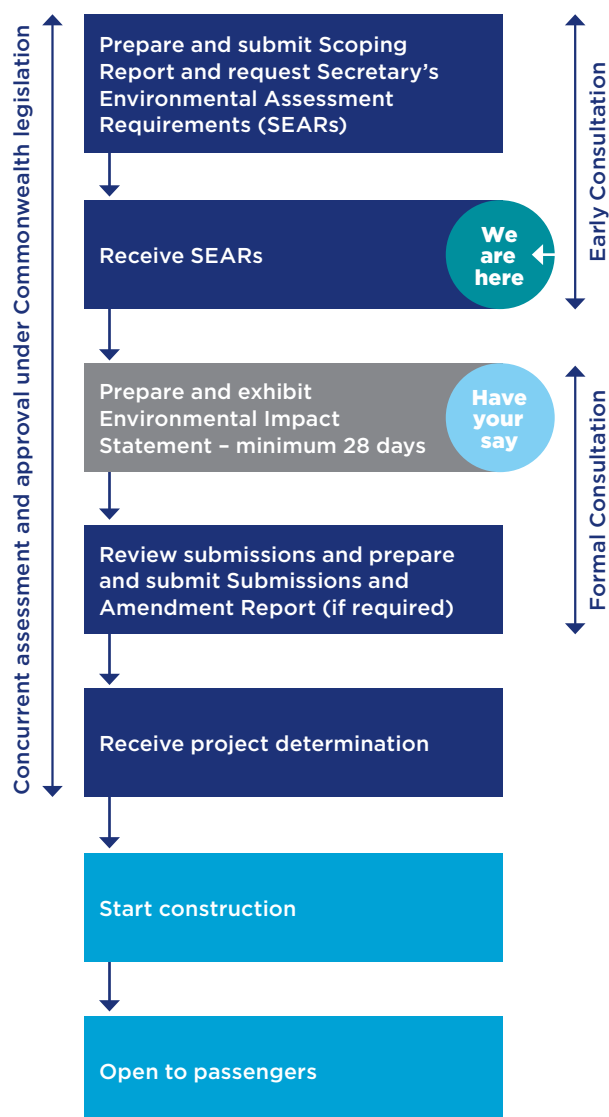
An Environmental Impact Statement for the project will be placed on public exhibition.

During the exhibition period, the community will be encouraged to have their say on topics including construction impacts, noise and vibration, site access, traffic and metro operations.

### Contact us

-  **1800 717 703** Community information line open 24 hours
-  **sydneymetrowsa@transport.nsw.gov.au**
-  **Sydney Metro – Western Sydney Airport**, PO Box K659, Haymarket NSW 1240
-  If you need an interpreter, contact TIS National on **131 450** and ask them to call **1800 717 703**

## NSW planning process for Sydney Metro – Western Sydney Airport



The project team will also host a series of community information sessions where members of the Sydney Metro – Western Sydney Airport team will be available to answer questions.



Scan to view  
**Sydney Metro -  
Western Sydney Airport  
Project overview**

## Project overview booklet (September 2020)



# Project overview

September 2020











# Sydney Metro is Australia's biggest public transport project

A new metro railway line will service the new Western Sydney International (Nancy-Bird Walton) Airport and Greater Western Sydney.

This city-shaping project will become the transport spine for the growing region, connecting communities with the new airport, jobs and services and delivering better access to employment opportunities, health and education facilities and leisure activities across Greater Sydney.

The Sydney Metro – Western Sydney Airport project will deliver about 23 kilometres of rail between St Marys Station and the future Western Sydney Aerotropolis in Bringelly.

Six stations are proposed to be built along the alignment including two stations at Western Sydney International airport, one at the Western Sydney Aerotropolis and one at St Marys – here customers will be able to connect to the existing Sydney Trains suburban T1 Western Line. Proposed stations at Orchard Hills and Luddenham will service a future mixed-use precinct and an education and innovation precinct.

Sydney's new generation of driverless metro railway services is already connecting people between the city's North West at Rouse Hill and Chatswood, and in 2024 Sydney Metro will extend under Sydney Harbour, through to new stations in the central business district (CBD), and beyond to the South West at Bankstown. Construction on Sydney Metro West will start later this year – the project will connect Greater Parramatta with the Sydney CBD, linking communities to rail services along the way.



# Contents

About this project overview	5
Project summary	6
The biggest urban rail project in Australian history	8
A new railway for Greater Western Sydney	10
The Western Sydney City Deal	12
Why this project is needed	13
City shaping rail	14
Station locations	16
Project alignment	20
St Marys Station	22
Orchard Hills Station	24
Luddenham Station	26
Western Sydney International (Nancy-Bird Walton) Airport stations	28
Aerotropolis Station	30
Rail corridor	32
Supporting services and infrastructure	34
Sydney Metro Trains Facility	36
Placemaking and station precincts	40
Community consultation	42
Working with the community	44
Early investigations	45
Next steps	45
Contact us	46





# About this project overview

This document is intended as an overview of the Sydney Metro – Western Sydney Airport project.

It outlines information about proposed station locations and construction sites, and next stages in the planning process.

More information is available in the project's Scoping Report, submitted to the Department of Planning, Industry and Environment in June 2020.

The Scoping Report provides further detail on the scope of the project, consultation completed to date, and the next steps in preparing detailed environmental assessments for the project, which will be exhibited for community feedback.

Sydney Metro respectfully acknowledges the traditional owners and custodians of this land and we pay our respects to Elders past, present and future extending this respect to all Aboriginal and Torres Strait Islander peoples.



# Project summary

New metro rail is set to become the transport spine for the Greater Western Sydney region, with planning for the Sydney Metro – Western Sydney Airport project moving ahead.

The project is a key part of delivering an integrated transport system for the Western Parkland City. The Western Parkland City covers districts in Greater Western Sydney including the established centres of Greater Penrith, Liverpool and Campbelltown–Macarthur.

The new railway will link residential areas with job hubs and the nationally-significant Western Sydney International airport.

The project will provide a major economic stimulus in the heart of Western Sydney, supporting 14,000 jobs during construction, with more than 250 new apprenticeships on offer.

The airport is expected to support nearly 28,000 direct and indirect jobs by 2031 and will underpin the development of Western Sydney Aerotropolis, located at the centre of the Western Parkland City.

An artist's impression of Luddenham Station.





Western Sydney Aerotropolis will support 200,000 new jobs and will be a focal point for Australian innovation, research and productivity.

The Sydney Metro – Western Sydney Airport project will have new metro stations at:

- St Marys
- Orchard Hills
- Luddenham
- Airport Business Park
- Airport Terminal
- Western Sydney Aerotropolis.

A stabling and maintenance facility and operational control centre would also be built along the alignment to support operation of metro rail.

The Australian and NSW governments have a shared objective of having Sydney Metro – Western Sydney Airport operational when the airport opens for passenger services.

Construction is planned to start in late 2020.

The Sydney Metro team will consult with the community, stakeholders and industry during the ongoing planning process.





# The biggest urban rail project in Australian history

## Metro North West Line

Opened 26 May 2019



13 stations



4000 commuter car parks



36 kilometres

## City & Southwest

Opening 2024



18 stations



New CBD connections



30 kilometres, including under Sydney Harbour

## West

(final alignment to be confirmed)



Eight stations



Connecting Greater Parramatta and the Sydney CBD



Western Sydney population, 2036

## Western Sydney Airport Line (final alignment to be confirmed)



Six stations



Connecting Western Sydney International airport to the rest of Sydney



Servicing Greater Western Sydney

 Sydney Trains suburban network

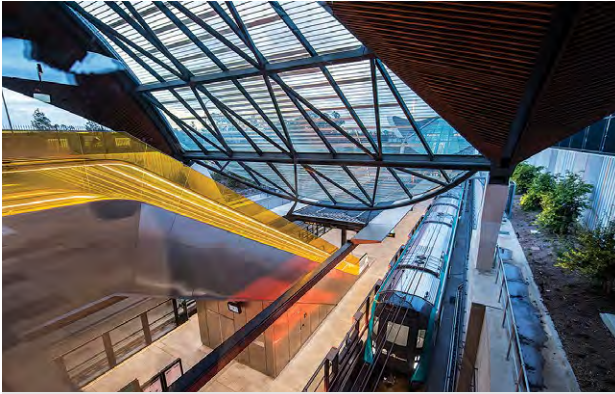
 Future metro

 Future strategic rail connection (indicative)





# A new railway for Greater Western Sydney



Sydney Metro infrastructure, like the stations, trains and railway tracks, is owned by the NSW Government.



A metro station at Western Sydney International airport will open opportunities for Greater Western Sydney and connect it to the rest of the world.



A metro station at St Marys, catalysing the revitalisation of the town centre.



A new metro station to service a future commercial and mixed-use precinct at Orchard Hills.



A new metro station at Western Sydney Aerotropolis – a future economic hub for Greater Western Sydney.



Delivering rail to service the future research, innovation and commercial precinct in Luddenham.





More opportunities for locals with access to future employment and education hubs within the Western Parkland City.



A new metro station at St Marys delivering a fast and efficient interchange with the existing Sydney Trains suburban rail network.



Next generation fully air-conditioned metro trains.



All Sydney Metro stations are fully accessible with lifts and level access between trains and platforms.



Creating well-connected centres that are easily accessible for customers using different transport modes including cycling, walking paths and vehicles.



Sydney Metro uses Opal ticketing and fares are set by the NSW Government, the same as the rest of the Sydney public transport network.



# The Western Sydney City Deal

Supporting the airport and Aerotropolis is a key part of the Western Sydney City Deal, a 20-year agreement signed in March 2018 by the Australian Government, the NSW Government and local governments of the Blue Mountains, Camden, Campbelltown, Fairfield, Hawkesbury, Liverpool, Penrith and Wollondilly.

The City Deal commits all levels of government to work together to deliver more jobs for Western Sydney and improve the region's liveability through 38 commitments, including better connectivity, an improved environment, and more housing and education outcomes for the region.

Delivering the Western Sydney Airport metro project, linking Western Sydney International airport and the Aerotropolis with the broader Sydney rail network, is a key City Deal commitment.

Aerial photo of Western Sydney International airport construction activity in 2020.





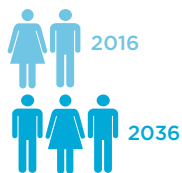
# Why this project is needed

This city-shaping metro rail project will support nationally-significant growth in Western Sydney, with fast and efficient access between existing and future residential centres and employment hubs across Greater Sydney.

The project will provide essential rail connection to service the new Western Sydney International airport and support planned growth in Western Sydney Aerotropolis and other future commercial and residential precincts.

Sydney Metro will make it easier and faster to get around, boosting economic productivity by supporting new jobs and educational opportunities closer to home.

Greater Sydney's population is projected to grow to eight million people over the next 40 years, with the population of Western Sydney to reach approximately 3.7 million people in 2036. Investment in public transport will play an important role in supporting this growth, ensuring Sydney's future liveability and global competitiveness.



Western Sydney is currently home to **2 million people** with growth forecast to reach approximately **3.7 million people by 2036** – 55% of Sydney's population.

**74% of residents travel to work in a car.**



Currently more than **320,000 residents** travel outside the Western Sydney region for work or study everyday.



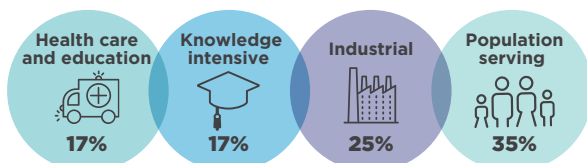
**10 million** annual Western Sydney International airport travellers by the early 2030s.



A third of residents spend an **average of 90 minutes commuting** to work.



## 2016 Employment in the Western Parkland City



Western Sydney population sourced from NSW Population Projections by the NSW Department of Planning, Industry and Environment.

## 2036 Employment in the Western Parkland City





# City shaping rail

## Supporting a 30-minute city

The Greater Sydney Commission's 'Towards our Greater Sydney 2056' outlines how the city is planning for future decades. Created on the 30-minute cities concept, the NSW Government is investing in significant new infrastructure projects designed to deliver a renewed urban environment for Sydney that changes the patterns of where people live and work, how they enjoy their spare time and how they travel.

New metro rail would help optimise land use and development, supporting precincts and places at station locations and helping to stimulate economic activity and innovation through the co-location of industries.

## Future Transport 2056

The NSW Government's Future Transport 2056 strategy supports the 30-minute cities concept and builds on the 2012 NSW Long Term Transport Master Plan, which has guided unprecedented investments in transport services and infrastructure across NSW.

The Sydney Metro - Western Sydney Airport project is key part of delivering an integrated transport system for the Western Parkland City, as envisaged in Future Transport 2056.

The project is key to the development of future precincts in the Western Parkland City.

Aerial view of St Marys Station.





The project will provide a connection to the T1 Western Line at St Marys and two new stations within Western Sydney International airport. Future key precincts at Orchard Hills and Luddenham will be serviced by two new stations, and a new station will service the commercial heart of Western Sydney Aerotropolis.

The Future Transport 2056 strategy can be found at: [future.transport.nsw.gov.au](https://future.transport.nsw.gov.au).





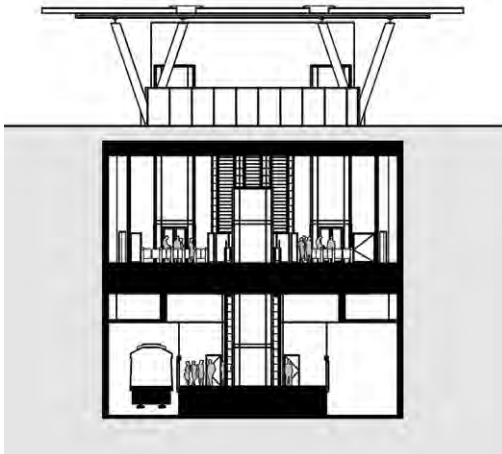
# Station locations

Sydney Metro has been working with stakeholders and industry to create a project that will deliver a fast, safe and reliable metro.

Sydney Metro will support the success of the future Western Parkland City with confirmed stations at St Marys, Orchard Hills, Luddenham, Airport Business Park, Airport Terminal and Western Sydney Aerotropolis.

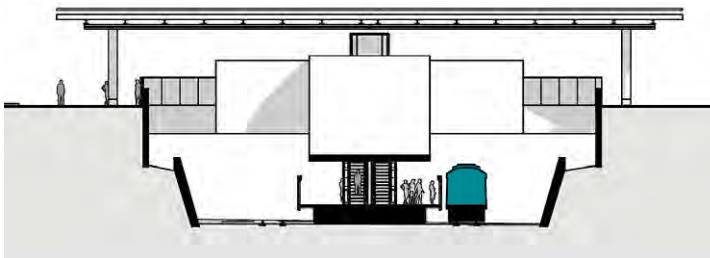
## Different types of metro railway stations

### Cut-and-cover station



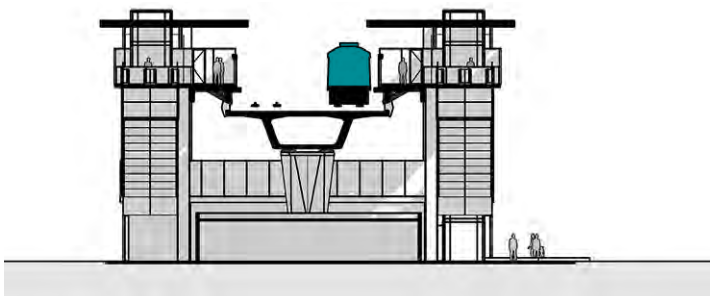
Excavation equipment is used to dig a large trench or rectangular hole in the ground, which is then covered to provide an underground station. Once the underground site is covered, other activities can resume on the surface as construction continues below.

### Open-cut station

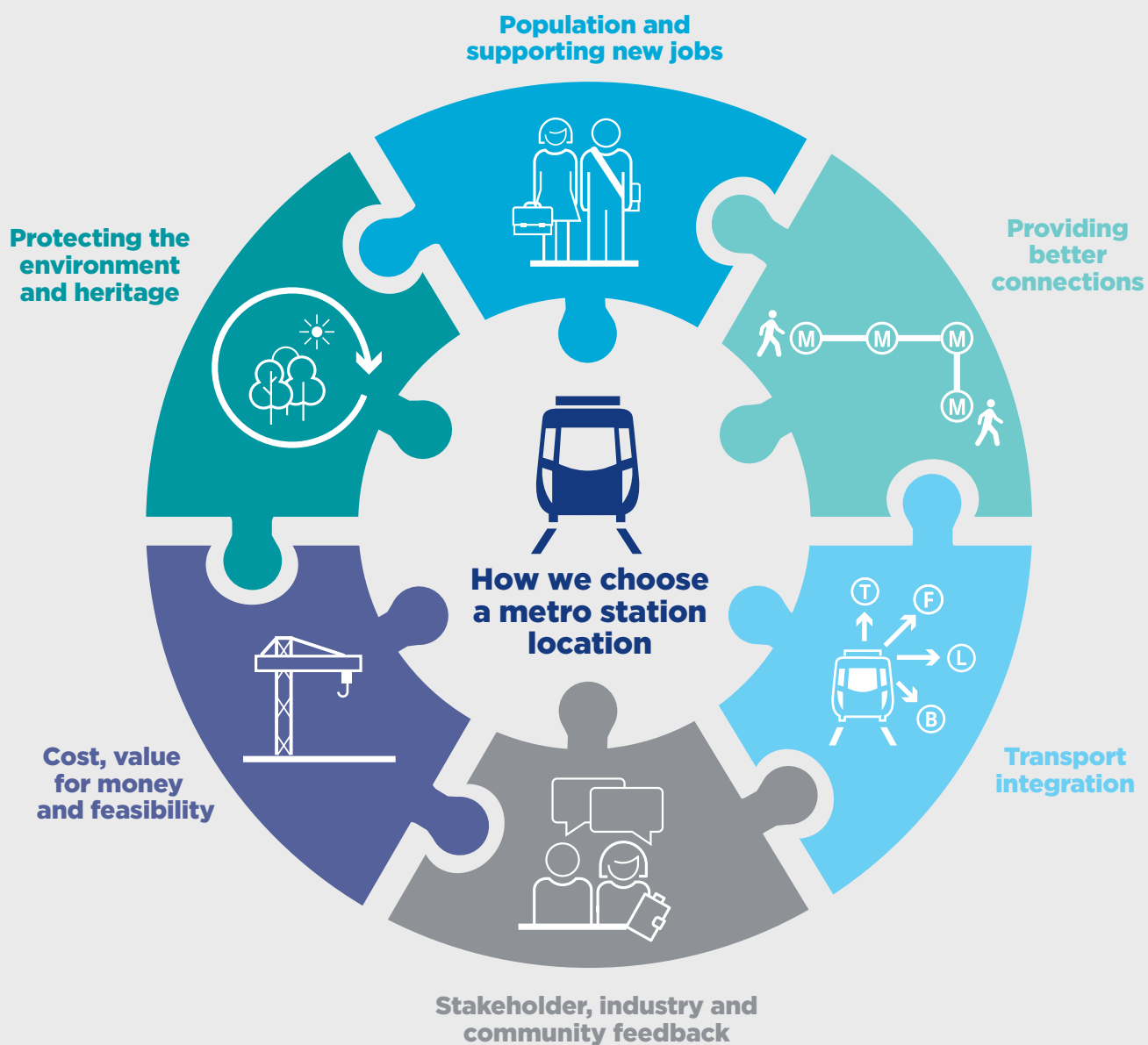


This type of station is located below ground level in an excavated trench or rectangular hole, which remains open to the sky.

### Elevated station



This type of station is constructed as a bridge-like raised structure with platforms located above ground level. Elevated stations allow for easier crossings underneath the viaduct (elevated) rail alignment.







# Platforms

to concourse



**i**  
Information  
Emergency  
**HELP**

**i**  
Information







Stations are designed to be an easy part of daily journeys.

State-of-the-art technology keeps customers connected – from planning a journey from home using smartphone travels apps to real-time information at metro stations and on board trains.

Sydney Metro stations are fully accessible for people with reduced mobility, people with prams, wheelchairs and children. This includes level access between platforms and trains and lifts at all stations.

Platform screen doors on all metro platforms keep people and objects away from the edge, improving customer safety and allowing trains to get in and out of stations much faster.

These doors run the full length of the platforms and only open at the same time as the train doors.

Sydney Metro is the first railway network in Australia to use platform screen doors, which are common around the world.

All stations are designed to reflect the character of the local areas they serve and, where possible, include environmentally friendly features such as solar panels, natural light and ventilation.

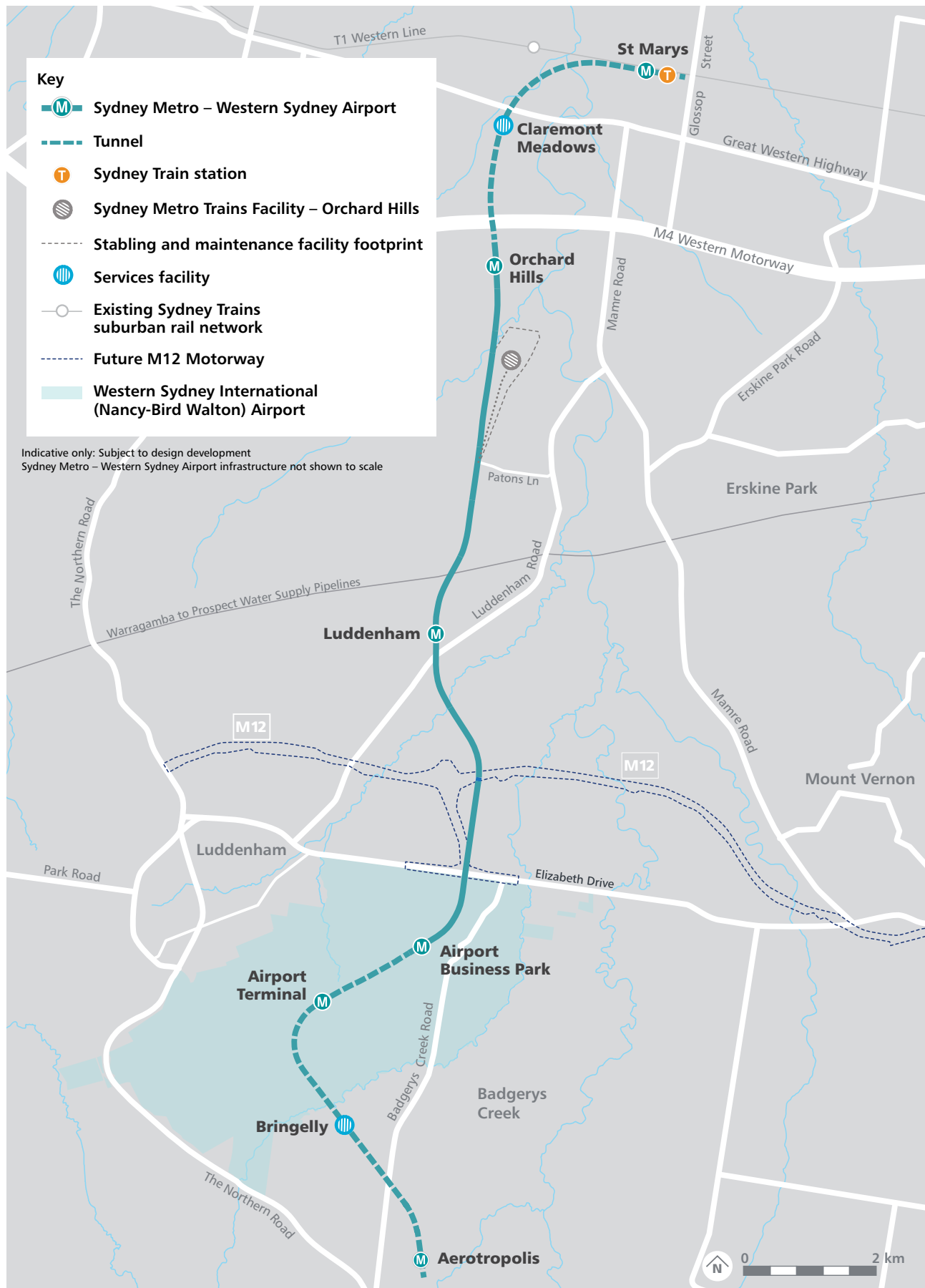
New metro services will be integrated with other transport modes, including interchanges with Sydney suburban rail as well as buses, light rail and ferries.

Customer safety is the number one priority for Australia's first fully-automated railway.

At all times, a team of expert train controllers will monitor the system, making sure everything runs smoothly.



# Project alignment









# St Marys Station

The proposed St Marys metro Station would be located under the existing Sydney Trains suburban rail station at St Marys and would have two entrances, one on Station Street and one on Harris Street.

The new St Marys metro Station would provide easy, efficient and accessible interchange with the existing T1 Western Line. The station would include a new concourse bridge that would connect north and south of the station precinct.

This new gateway to Sydney would become an important metropolitan transport interchange and would play a vital role in the revitalisation and renewal of St Marys as a strategic centre: promoting future employment growth, supporting the local population now and into the future and improving connections across Greater Western Sydney. The new station would also provide customers with easy access to bus services and walking and cycling links.

Feature	Description
<b>Centre type</b>	Strategic centre, a new gateway to Sydney
<b>Transport connections</b>	Sydney Trains suburban rail network, walking and cycling, bus, taxi/ride share, kiss and ride, park and ride
<b>Proposed station entry</b>	One station entrance on Station Street and one station entrance on Harris Street
<b>Station type</b>	Cut and cover
<b>Provision for integrated station and precinct development</b>	Yes, in consideration of the area's local character and relevant planning controls
<b>Local government area</b>	Penrith City Council

An artist's impression of St Marys Station.







**Key**

- Project footprint
- Indicative station site



0 100m



# Orchard Hills Station

The proposed Orchard Hills Station would be located on the eastern side of Kent Road, north of Lansdowne Road. The station would have one entrance on Kent Road with provision for a second entrance east of the station.

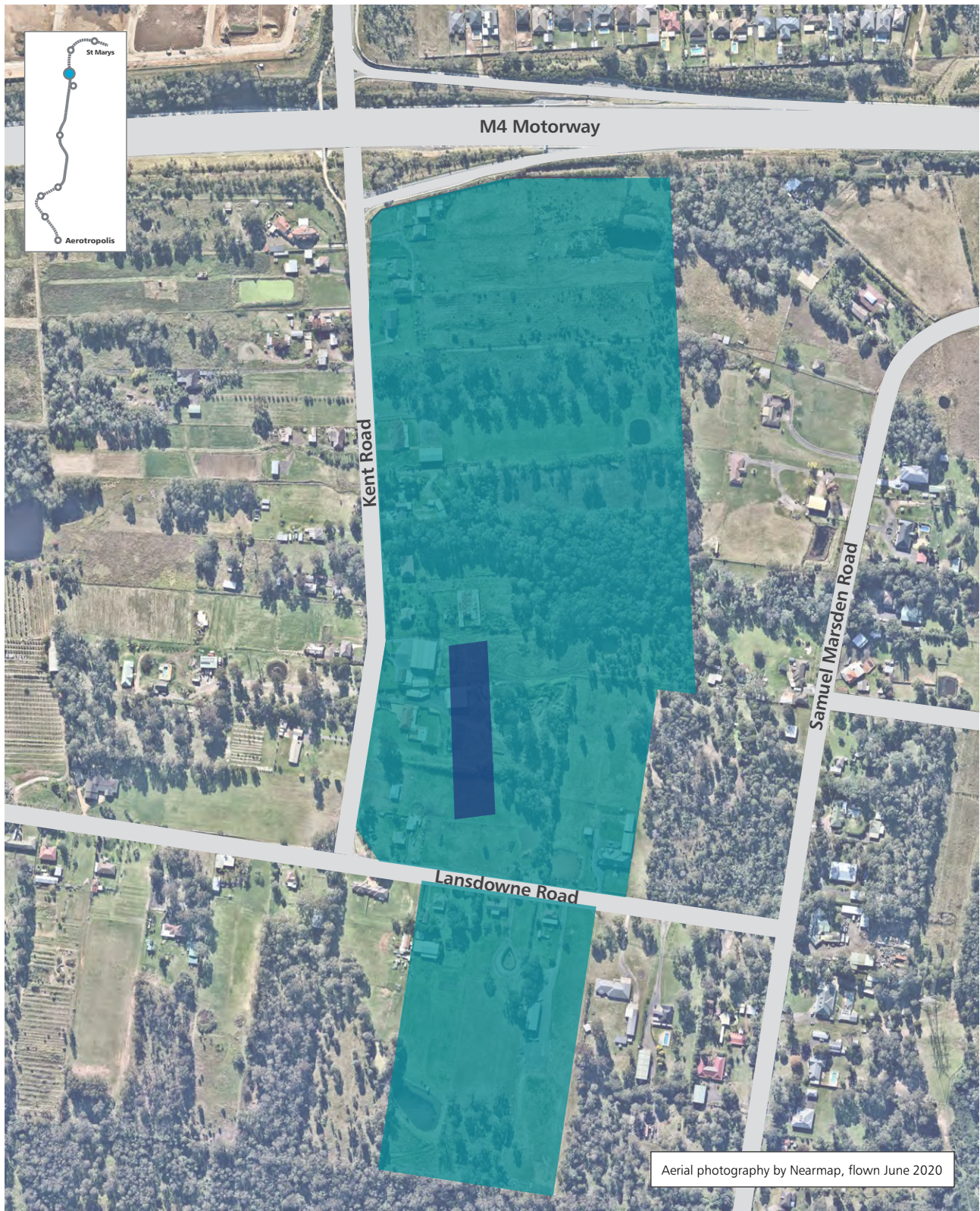
The station would service a future residential, commercial and mixed-use precinct. A metro station at Orchard Hills would help transform the area into a compact, high-amenity and walkable new community.

Feature	Description
Centre type	Local centre
Transport connections	Walking and cycling, local bus, kiss and ride, park and ride, taxi/ride share
Proposed station entry	Kent Road and possible eastern connection
Station type	Open cut
Provision for integrated station and precinct development	Yes, in consideration of the area's local character and relevant planning controls
Local government area	Penrith City Council

An artist's impression of Orchard Hills Station.







**Key**

- Project footprint
- Indicative station site



0 100m



# Luddenham Station

The proposed Luddenham Station would be located near Luddenham Road, between the Warragamba pipeline and the new airport. The station would have one entrance on the western side of the station's platforms.

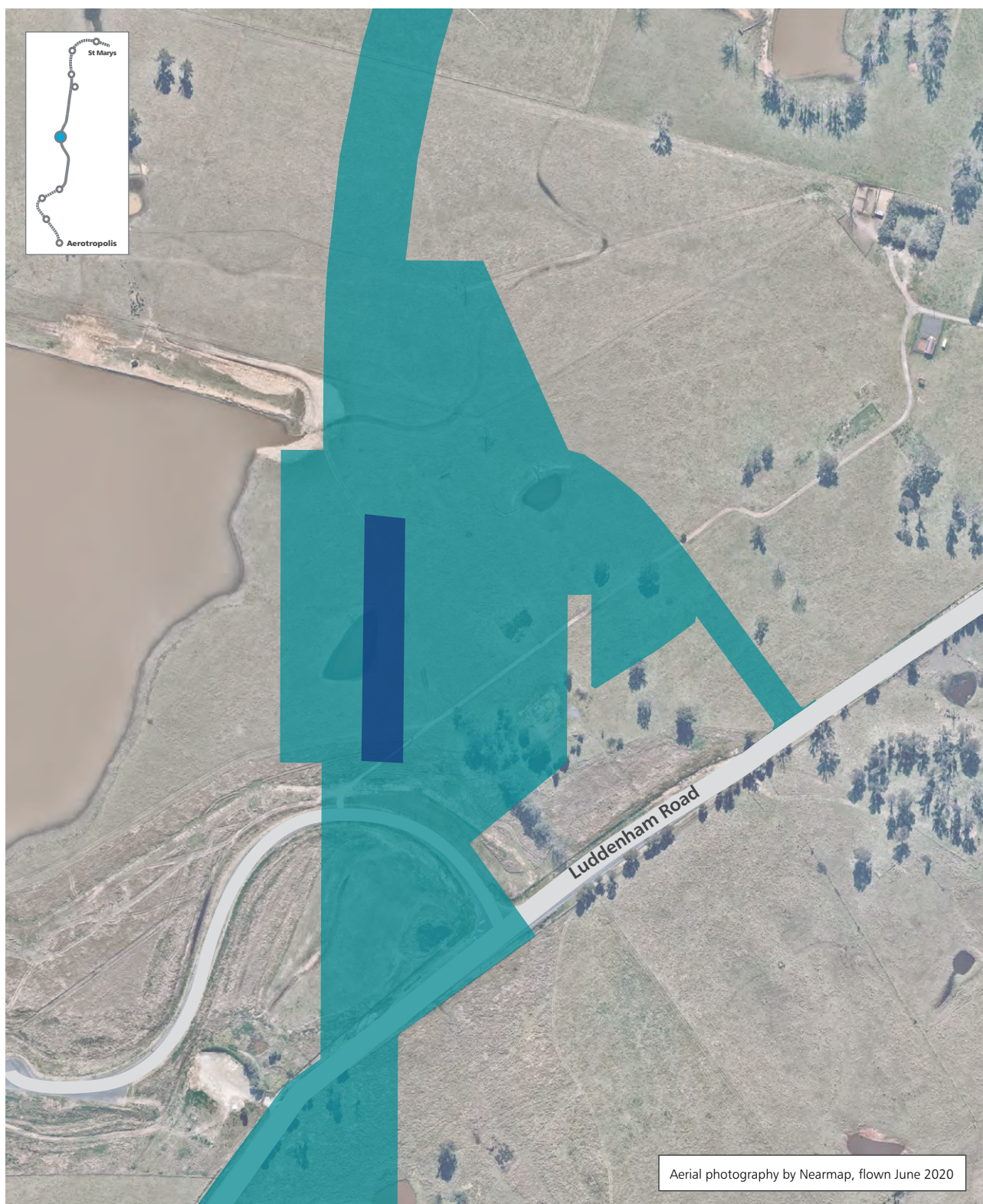
The station would be designed to support the future employment, research and knowledge-based employment precinct in Luddenham, along with mixed-use residential development with access to jobs, transport and green space.

Feature	Description
Centre type	Town centre
Transport connections	Local and rapid bus, kiss and ride, park and ride, taxi/ride share, walking and cycling
Proposed station entry	New local road
Station type	Elevated
Provision for integrated station and precinct development	To be determined by the Western Sydney Planning Partnership
Local government area	Penrith City Council

An artist's impression of Luddenham Station.

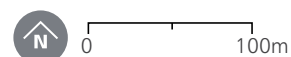






**Key**

- Project footprint
- Indicative station site





# Western Sydney International (Nancy-Bird Walton) Airport stations

## Airport Business Park Station

The proposed Airport Business Park station would be located south of Elizabeth Drive in the centre of the Western Sydney International airport precinct. The airport site is owned by the Australian Government.

The Airport Business Park Station precinct will become a major employment and services hub within the Western Economic Corridor.

The metro station would become a key interchange for customers working in the precinct, servicing a walkable and high-amenity place with strong public transport connectivity.

Feature	Description
Centre type	Business Park – commercial and retail precinct
Transport connections	Walking and cycling, bus (including a new Rapid Bus network), kiss and ride, taxi/ride share and safeguarded for a future interchange with an East-West Rail Link
Proposed station entry	New local road
Station type	Open cut
Provision for integrated station and precinct development	No
Local government area	Liverpool City Council

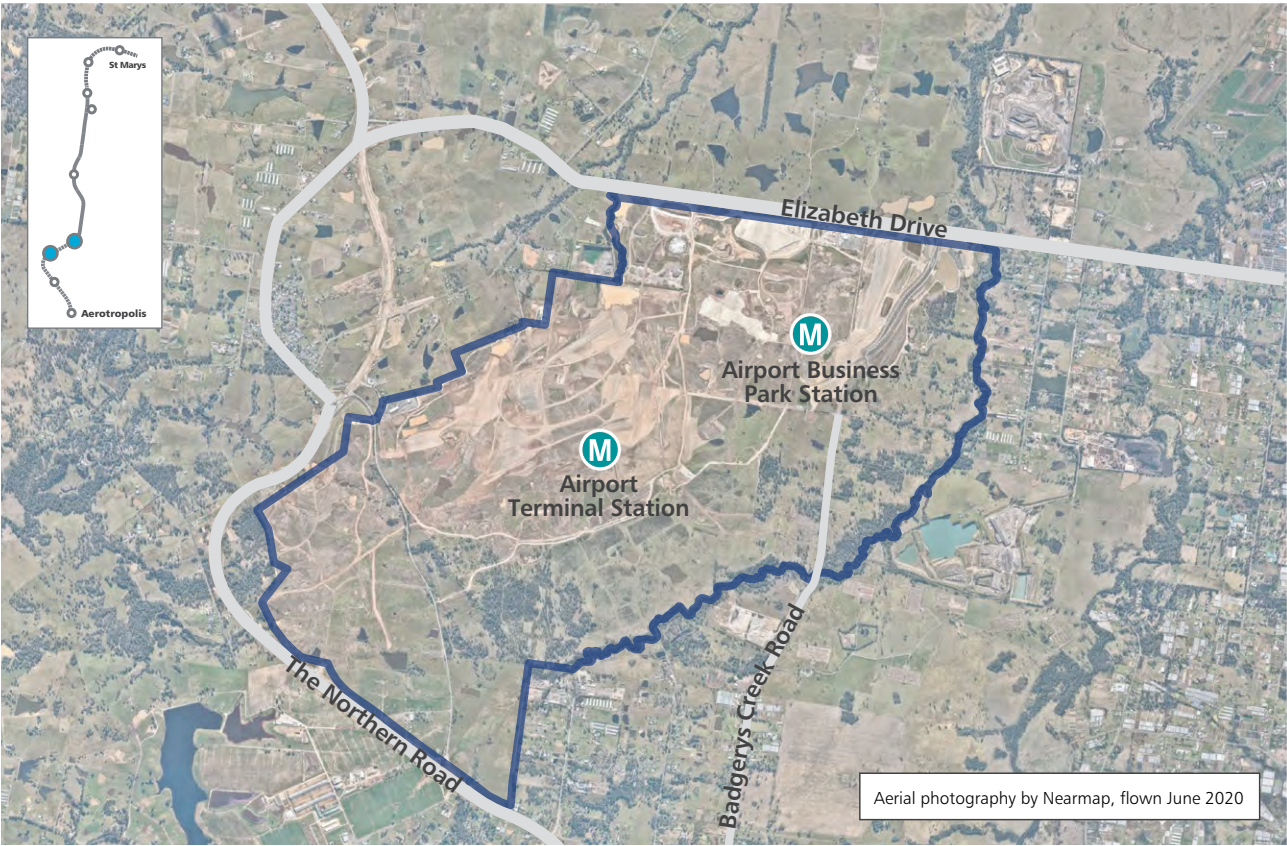
## Airport Terminal Station

The proposed Airport Terminal Station would enable easy and efficient customer access to the new Western Sydney International airport. The airport site is owned by the Australian Government.



The new metro station would integrate with and support the design outcomes for Western Sydney International airport, and maintain flexibility for future airport expansion..

Feature	Description
Centre type	International airport
Transport connections	To be determined
Proposed station entry	To be determined
Station type	Cut and cover
Provision for integrated station and precinct development	No
Local government area	Liverpool City Council





Key

-  Western Sydney International airport site
-  Indicative station site



0 1km

An artist's impression of the Airport Terminal Station.





# Aerotropolis Station

The proposed Aerotropolis Station would be located east of Badgerys Creek Road, serving the commercial heart of Western Sydney Aerotropolis, known as the Aerotropolis Core. There would be two entrances – one on the eastern side and the other on the western side of the station.

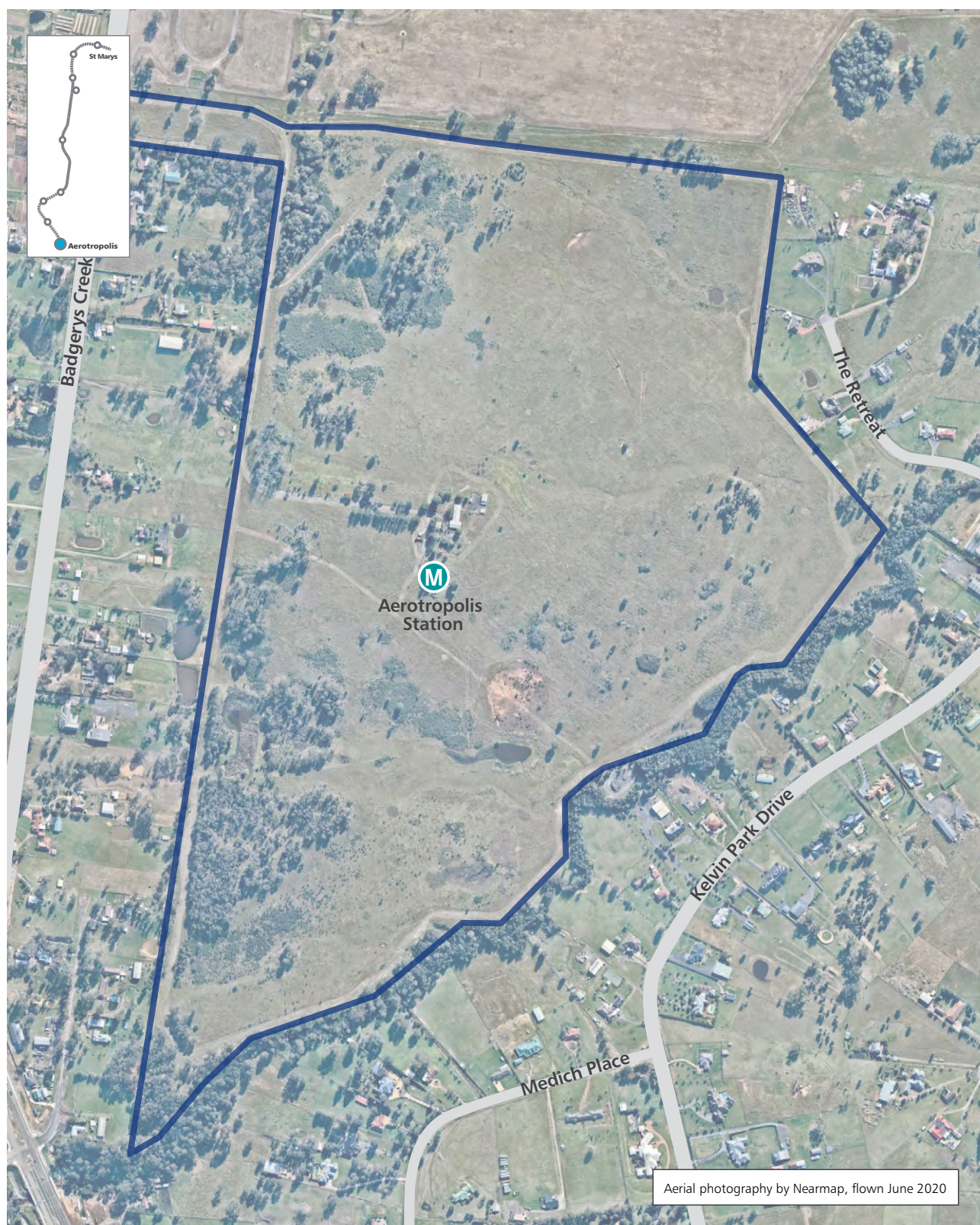
Aerotropolis Station would become a major transport interchange, providing important connectivity to the future new central business district of the Western Parkland City.

Feature	Description
<b>Centre type</b>	New central business district, known as the Aerotropolis Core
<b>Transport connections</b>	Bus (including the new Rapid Bus network), kiss and ride, temporary park and ride, taxi/ride share, walking and cycling and safeguarded for a future interchange with an East-West Rail Link and South West Rail Line extension
<b>Proposed station entry</b>	New street
<b>Station type</b>	Cut and cover
<b>Provision for integrated station and precinct development</b>	To be determined by the Western Sydney Planning Partnership
<b>Local government area</b>	Liverpool City Council

An artist's impression of Western Sydney Aerotropolis Station.







**Key**

- Aerotropolis site
- M Indicative station site



0 100m



# Rail corridor

The new metro will be built on an alignment within a railway corridor.

Due to topography and construction methodologies, operational needs and to get the best outcome for customers, the alignment is made up of a combination of:

## Tunnels

Twin metro railway tunnels built by tunnel boring machines take the railway below ground under roads and property.

The tunnel boring machines are underground mechanical factories, which dig out the rock then build the tunnel as they go, leaving behind them a fully-formed tunnel which is then fitted out with tracks and overhead wiring.

## At-grade

The railway is built at ground level. The railway corridor is fenced and monitored by the fully-automated railway system, with intrusion detection technology keeping train operations safe.

## Skytrain

The railway is elevated above the ground on a viaduct, with the station platforms also built above ground.

The skytrain viaduct allows the communities below to remain connected, with vehicles and people free to move above under the structure.

The 4-kilometre skytrain viaduct runs between Rouse Hill and Bella Vista on the Metro North West Line, taking the railway 13 metres above the ground and allowing free movement beneath it – keeping communities connected.



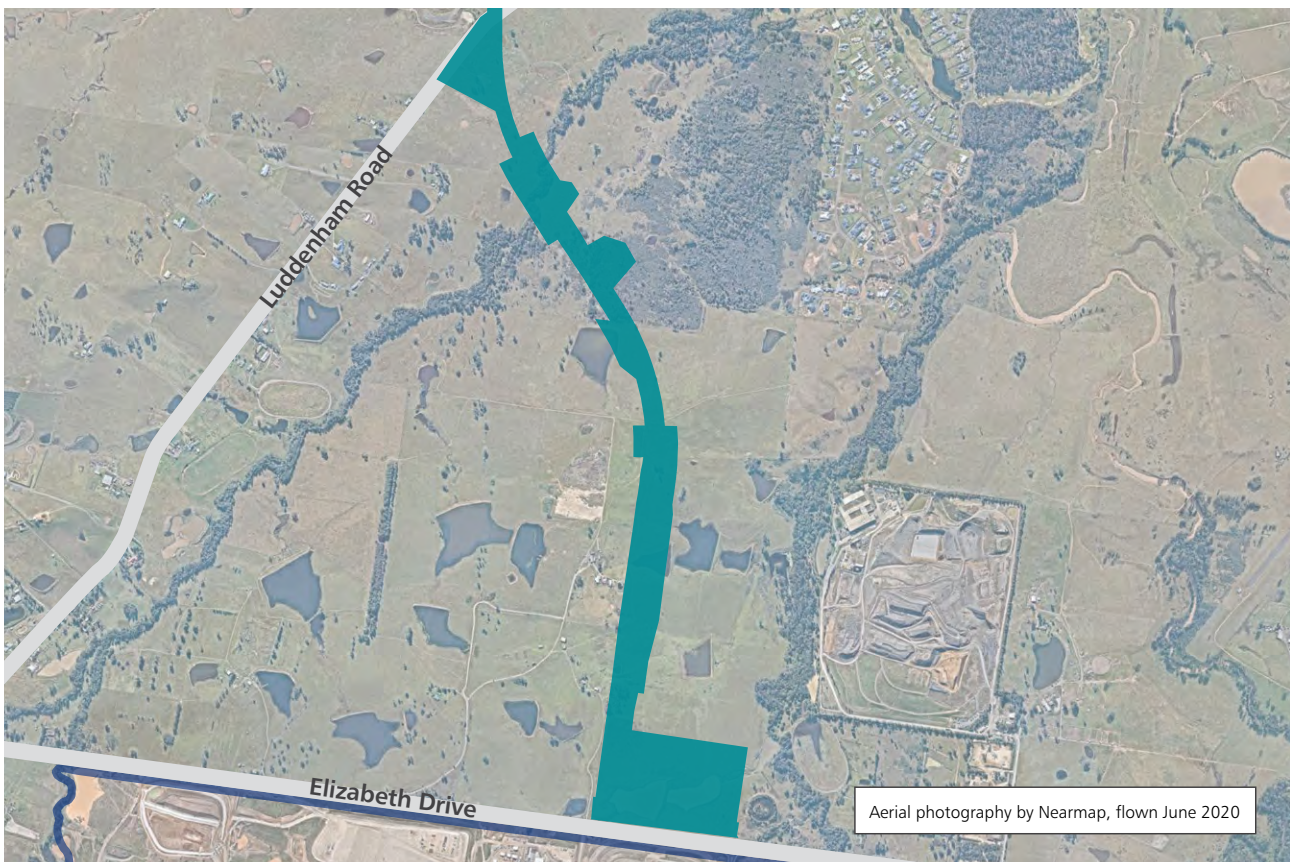




Corridor between Patons Lane in Orchard Hills and the new Luddenham Station, near Luddenham Road.



0 500m



Corridor south of the new Luddenham Station, between Luddenham Road and Elizabeth Drive in Badgerys Creek.



0 500m

#### Key

- Project footprint
- Aerotropolis site



# Supporting services and infrastructure

## Sydney Metro Trains Facility - Orchard Hills

The project requires land to stable metro trains and to house the maintenance and operational facilities associated with running a world-class metro railway.

A stabling and maintenance facility with an operations control centre would be located at Orchard Hills.

The stabling and maintenance facility would support operations for the new metro line and would be used for fleet maintenance.

The facility would also house offices, worker parking and storage.

Work to establish this facility would include:

- enabling work including protection or diversion of utilities and establishment of site access points
- site clearing and remediation
- transporting fill material to build retaining walls if required.

## Services facilities

Services facilities are proposed to be built at Claremont Meadows and Bringelly to provide fresh air ventilation into the tunnels and the emergency exits out of them.

Work to build the facilities would include:

- enabling work, including protection or diversion of utilities and establishment of site access points
- site clearing
- excavating a vertical shaft to the tunnels below
- lining and reinforcement of the shaft.

## Tunnelling

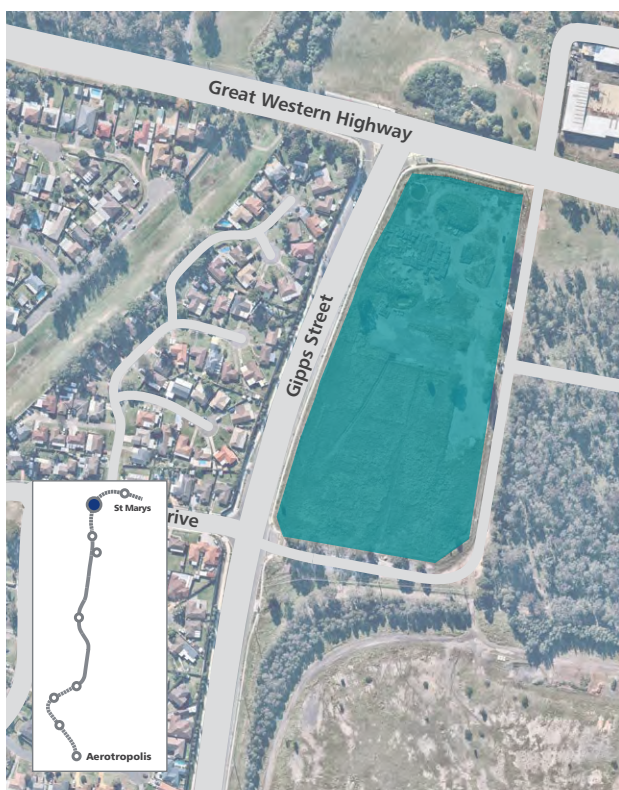
Sydney Metro – Western Sydney Airport would require the construction of twin tunnels between the St Marys and Orchard Hills stations and between the Airport Terminal and Aerotropolis stations.

It is anticipated that tunnel boring machines would be launched from sites at Orchard Hills and the Airport Business Park.

These sites would provide support for tunnelling operations including:

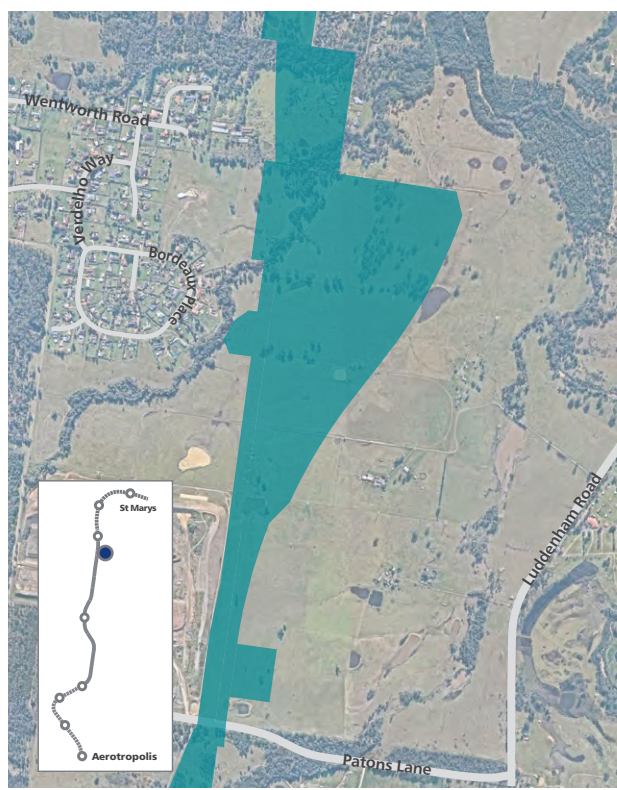
- spoil storage and removal of crushed rock
- power supply to the tunnel boring machines
- fresh air ventilation
- grout batching
- water treatment
- disposal material storage
- office facilities, amenities and construction worker parking.





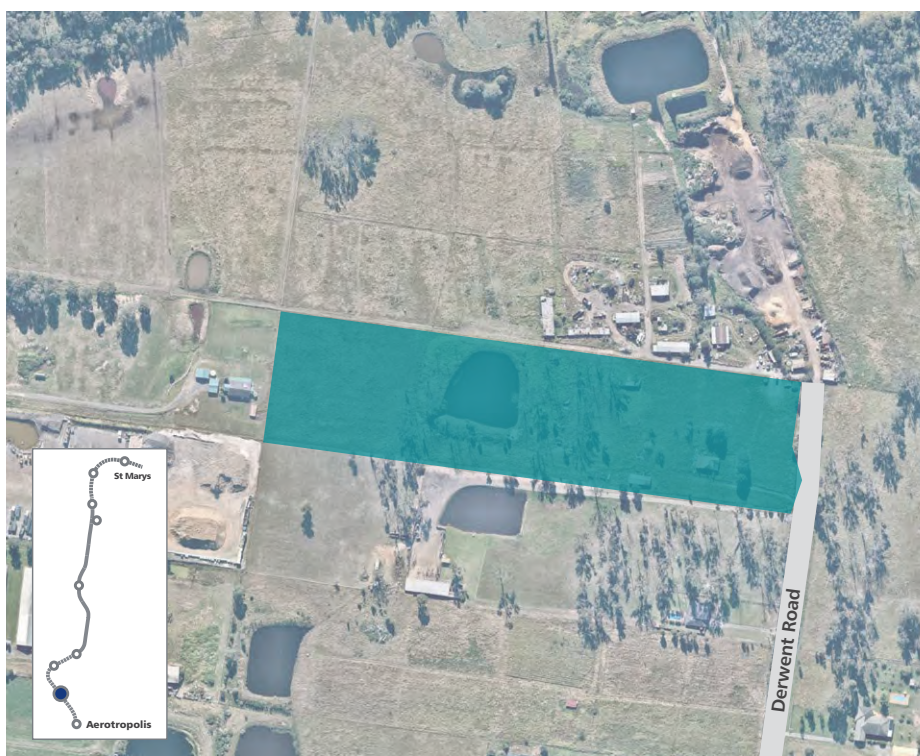
Claremont Meadows services facility.

0 100m



Sydney Metro Trains Facility - Orchard Hills.

0 200m



Bringelly services facility.

0 100m

**Key**

■ Project footprint

Aerial photography by Nearmap,  
flown June 2020



# Sydney Metro Trains Facility

Sydney's new metro railway is a state-of-the-art driverless system. The new airport line will be controlled from the Sydney Metro Trains Facility – Orchard Hills.

Trains will be stabled and maintained here and the driverless system will be controlled from here as well.

At the Operations Control Centre, expert train controllers will monitor every aspect of the system, including the lifts, escalators and platform screen doors used in the fully-accessible railway.

Northwest Sydney Metro Trains Facility.





Signalling and communications systems will control the trains, tunnel and platforms to deliver a safe and reliable journey.

The system, which includes hundreds of cameras, minimises the time trains are stopped at stations and the time between each train. It is a secure system with no external connections, as a safeguard.

Australia's first driverless railway, Sydney's Metro North West Line, has carried more than 20 million people since services started in May 2019 and, around the world, millions of people use driverless networks every day in cities like Paris, Singapore, Dubai and Hong Kong.

Before passenger services start, the operator will have to be accredited by the National Rail Safety Regulator.













# Placemaking and station precincts

The Sydney Metro – Western Sydney Airport project is a chance to build more than just railway stations. Through excellence in design and delivery, Sydney Metro will deliver places which:

- respond to the community's needs
- are architecturally unique and easy to get around
- are intuitive and safe, and promote people's health and wellbeing
- are active and vibrant with a mix of uses and activities.

Through urban design principles and placemaking, Sydney Metro precincts will be more than somewhere to catch the train – they will become the centre of communities and provide for a variety of uses.

Sydney Metro will work closely with communities and stakeholders on how best to integrate stations that are thriving, welcoming hubs for everyone to enjoy, with new places for people to live, work, shop and play – and public spaces designed to encourage walking, cycling and social interaction. The stations will be vibrant places and landmarks in their own right that will support the success of the Western Parkland City.

## Integrated station and precinct developments

New metro stations create opportunities to provide for community needs in consideration of the future vision, relevant planning controls and local character of each area. An integrated station and precinct development is made up of the metro station and building(s) above and/or around the station that could deliver a range of uses like community facilities, retail and commercial office spaces, new homes and green spaces and shops and restaurants.

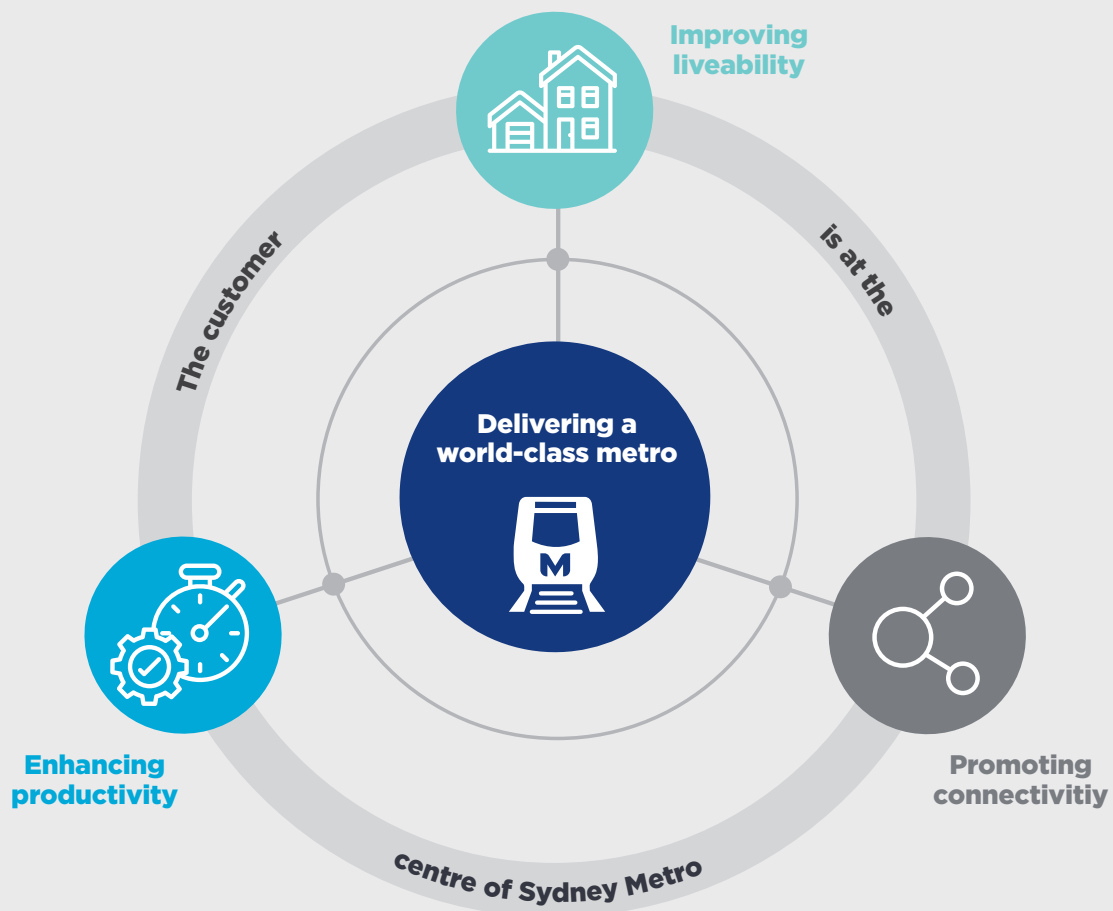
Opportunities for station and precinct developments are being investigated at St Marys and Orchard Hills.

All future precinct development would be subject to separate planning approval processes and would include community and stakeholder engagement.

Future development around the Luddenham and Aerotropolis stations are being considered through the Western Sydney Aerotropolis Plan that is being delivered by the Western Sydney Planning Partnership.







## The customer is at the centre

The new metro rail system will be an easy part of daily journeys. Technology will keep customers connected at all stages of their journey – from smart phone travel apps, to real-time journey information at metro stations and on board trains.

This door-to-door approach will help customers achieve their daily tasks, whether it's getting to work, meetings, school or education, sport, a day out or running errands – and, of course, getting home. Making it easy for customers at each stage of their journey is integral to the successful delivery of Sydney Metro.

Linking communities, schools, hospitals, key destinations and businesses with the new metro system is key in attracting and keeping customers as well as in meeting broader transport and land use objectives.

Sydney Metro will work across government and with the community to get customers to and from metro stations easily.

The metro product has been designed to deliver safe, clean, comfortable and reliable services.

Metro stations will provide safe and efficient interchanges between transport modes.



# Community consultation

Early consultation has begun on the city-shaping Sydney Metro – Western Sydney Airport project.

## Community surveys

In February 2020 and July 2020, the community was invited to participate in online community surveys to share their views about the Sydney Metro – Western Sydney Airport project.

Around 1700 people responded to the survey in February to share their priorities for public transport in Greater Western Sydney and to provide feedback on future station precincts.

Around 320 people responded to the survey in July, sharing their views on how they expect to use the new service, and how they would like to be updated about potential construction impacts.

## How you can contact us



Call us on **1800 717 703**  
(24-hour community information line)



Write to us at  
**Sydney Metro – Western Sydney Airport,  
PO Box K659, Haymarket NSW 1240**



Send us an email at  
**[sydneymetrowsa@transport.nsw.gov.au](mailto:sydneymetrowsa@transport.nsw.gov.au)**



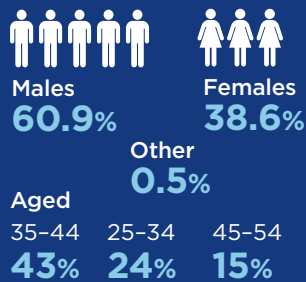
Visit our project website  
**[sydneymetro.info](http://sydneymetro.info)**



# Community survey feedback

In February 2020, community members were invited to share their views to help shape future metro station precincts in Greater Western Sydney

## Survey participants



## You live in

Marsden Park  
Claremont Meadows  
Ropes Crossing  
Schofields  
St Marys  
Orchard Hills  
Kingswood

## You speak

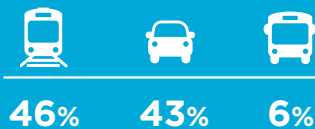
English  
Hindi  
Gujarati  
Tagalog



## You value

- Access to public transport
- Parks and recreation spaces
- A sense of community
- Natural environment

## How you get around



## Public transport use



## The benefits of a metro station in your community

- Metro connections with other public transport
- Reduced travel on roads
- Improved connections
- Jobs created close to new metro stations
- Local areas revitalised with cafes, restaurants and shops

## Retail and services which are important to your community

- | Retail          | Community facilities    | Public spaces         |
|-----------------|-------------------------|-----------------------|
| 42% Supermarket | 35% Community space     | 38% Tables/seating    |
| 27% Pharmacy    | 28% Government services | 34% Grass/landscaping |
| 14% Gym         | 22% Child care          | 24% Playgrounds       |

## Top transport priorities

- New public transport routes
- Connecting bus services to new metro stations
- More accessible public transport connections
- Reducing road congestion

## Public transport barriers

- Infrequent or unreliable
- Safety and security
- Lack of pedestrian infrastructure
- Not easily accessible

## What else we heard from you

- ✓ You support a growing Western Sydney
- ✓ You support job creation for your local areas
- ✓ You would like future connectivity with other modes of transport
- ✓ Less time commuting means more time with family





# Working with the community

## Place managers

Sydney Metro has dedicated community relations specialists called place managers who act as a point of contact between local communities and stakeholders on behalf of Sydney Metro.

Place managers play an important role in maintaining close and ongoing contact with members of the local community and are available to answer questions and receive feedback about the project.

Dedicated place managers have been available during early consultation and will continue to be available during the design and delivery of the project.



A Sydney Metro community event.



# Early investigations

Sydney Metro is continuing to undertake site investigations along the project alignment to assist with the planning and design of the railway and stations. Activities include geotechnical investigations, noise monitoring and heritage and ecology surveying. The community will be notified in advance of works.

Sydney Metro will continue to undertake work across its projects in accordance with current government advice, and will continue to implement social distancing and travel and hygiene measures to protect members of the community and employees. Continuing with works is critical to ensuring project continuity, and the project team will review and assess activities in line with any further updates.

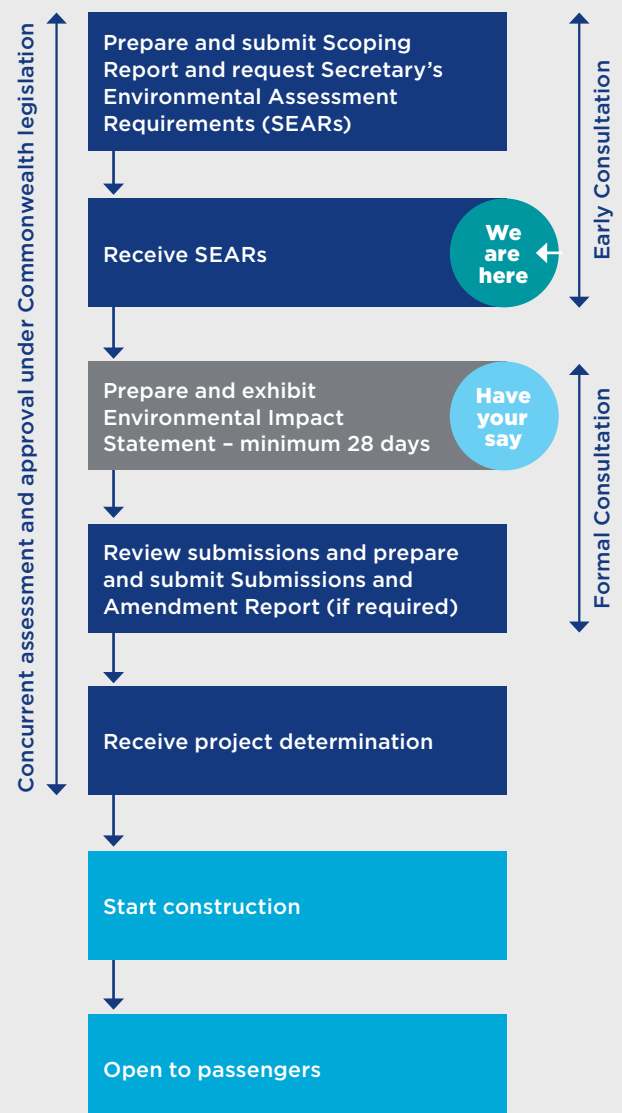
## Next steps

The Sydney Metro – Western Sydney Airport project team will develop detailed planning and environmental assessment documents for public exhibition and community consultation.

An Environmental Impact Statement for the project will be placed on public exhibition.

During the exhibition period, the community will be encouraged to have their say on topics including construction impacts, noise and vibration, site access, traffic and metro operations. The project team will also host a series of community information sessions where members of the Sydney Metro – Western Sydney Airport team will be available to answer questions.

### NSW planning process for Sydney Metro – Western Sydney Airport





# Contact us



**1800 717 703** Community information line open 24 hours



**sydneymetrowasa@transport.nsw.gov.au**



**Sydney Metro – Western Sydney Airport**, PO Box K659, Haymarket NSW 1240



## Translating and Interpreting Service

If you require the services of an interpreter, please contact the **Translating and Interpreting Service** on **131 450** and ask them to call **Sydney Metro** on **1800 717 703**. The interpreter will then assist you with translation.

Se avete bisogno dell'ausilio di un interprete, vi preghiamo di contattare il **Servizio di Traduzione ed Interpretariato** al numero **131 450** e chiedere di chiamare **Sydney Metro** al numero **1800 717 703**. L'interprete vi assisterà nella traduzione.

Jekk għandek bżonn ta' interpretu, ikkuntattja TIS National fuq **131 450** u staqsihom biex iċemplu **1800 717 703**.

Kung kailangan mo ng mga serbisyo ng isang interpreter, mangyaring kontakin ang **Translating and Interpreting Service** sa **131 450** at hilingin sa kanila na tawagan ang **Sydney Metro** sa **1800 717 703**. Ang interpreter ay tutulong sa iyo sa pagsasalang-wika.

如果您需要翻译服务, 请致电**131 450** 翻译和口译服务, 让他们打 **1800 717 703** 给悉尼地铁, 翻译员然后将帮助您进行翻译。

إذا كنتم بحاجة إلى خدمات مترجم، يرجى الاتصال بخدمة الترجمة الكتابية والشفهية على الرقم **131 450** واطلبوا منهم الاتصال بمترجو سيدني على الرقم **1800 717 703**. وبعد ذلك سيقوم المترجم بمساعدتكم في الترجمة.

Εάν χρειάζεστε τις υπηρεσίες διερμηνέα, παρακαλείστε να επικοινωνήσετε με την **Υπηρεσία Μετάφρασών και Διερμηνέων** στο **131 450** και ζητήστε τους να καλέσουν το **Sydney Metro** στο **1800 717 703**. Ο διερμηνέας θα σας βοηθήσει στη μετάφραση.

통역서비스가 필요하시면, 번역 및 통역 서비스 (**Translating and Interpreting Service**) 전화 **131 450** 에 연락하시어 **Sydney Metro** 전화 **1800 717 703** 에 연결해달라고 요청하십시오. 통역관이 통역을 도와 드릴 것입니다.

Nếu quý vị cần dịch vụ thông dịch viên, xin liên lạc **Dịch vụ Thông Phiên Dịch (Translating and Interpreting)** ở số **131 450** và yêu cầu gọi **Sydney Metro** ở số **1800 717 703**. Sẽ có thông dịch viên giúp cho quý vị việc thông dịch.

यदि आपको दुभाषिए की सेवाओं की ज़रूरत है, तो कृपया अनुवाद एवं दुभाषिया सेवा (**Translating and Interpreting Service**) से **131 450** पर संपर्क करें और उन्हें सिडनी मेट्रो **1800 717 703** पर को फोन करने का निवेदन करें। फिर दुभाषिया अनुवाद में आपकी मदद करेगा।

如果您需要口譯員的服務, 請致電**131 450**聯絡翻譯和口譯服務, 要求他們致電 **1800 717 703**給悉尼地鐵 (**Sydney Metro**)。然後口譯員將會協助您翻譯。

আপনার, একজন দোভাষীর (ইন্টারপ্রেটার) সেবা-সাহায্য আবশ্যিক হলে, অনুগ্রহ করে **131 450** নং এ **ট্রান্সলেটিং এন্ড ইন্টারপ্রেটিং সার্ভিস** এর সাথে যোগাযোগ করুন, এবং **1800 717 703** নং এ **সিডনী মেট্রো** কে কল করতে তাদের বলুন। তখন অনুবাদ/ভাষান্তরে, দোভাষী আপনাকে সাহায্য করবে।











## Community survey (July 2020)





Australian Government



## Sydney Metro - Western Sydney Airport





# Sydney Metro is Australia's biggest public transport project

The Sydney Metro – Western Sydney Airport project is the new metro railway line which will service Greater Western Sydney and the new Western Sydney International (Nancy-Bird Walton) Airport.

## Have your say

On 1 June 2020 it was announced that Sydney Metro – Western Sydney Airport will have stations at St Marys, Orchard Hills, Luddenham, two stations within the airport site and one at the Aerotropolis.

We want to hear from you on how you expect to use the new service. We also want to understand how best to communicate with you about potential construction impacts.

**[sydneymetro.info](https://sydneymetro.info)**



Please share your views by taking five minutes to complete the survey online. To participate, you can fill out the survey via the Sydney Metro website:

**[sydneymetro.info/wsa](https://sydneymetro.info/wsa)**

The survey is open until **24 July 2020**.

Front image: An artist's impression of a metro train.

## Contact us



**1800 717 703** Community information line  
open 24 hours



**[sydneymetrowsa@transport.nsw.gov.au](mailto:sydneymetrowsa@transport.nsw.gov.au)**



Sydney Metro – Western Sydney Airport,  
PO Box K659, Haymarket NSW 1240



If you need an interpreter, contact TIS National  
on **131 450** and ask them to call **1800 717 703**





Servicing Sydney's new airport, the Sydney Metro - Western Sydney Airport project is the new metro railway line which will service Greater Western Sydney and the new Western Sydney International (Nancy-Bird Walton) Airport.

On 1 June 2020 it was announced that the Sydney Metro - Western Sydney Airport project will have stations at St Marys, Orchard Hills, Luddenham, two stations within the airport site and one at the Aerotropolis.

We want to hear from you on how you expect to use the new service. We also want to understand how best to communicate with you about potential construction impacts. Please share your views by taking five minutes to complete the survey.

swipe to the left to engage



←

swipEngage™

→



Sydney Metro - Western Sydney Airport

Do you live or work in Greater Western Sydney?

choose one








←

swipEngage™

→

1



Sydney Metro - Western Sydney Airport

If yes, which will be your local metro station?

choose one


St Marys




Orchard Hills

Luddenham

Alipart

Aerotropolis (Brigsmally)





Sydney Metro - Western Sydney Airport

How are you most likely to travel to your local metro station?  
choose all that apply

Train	<input type="checkbox"/>
Bus	<input type="checkbox"/>
Driv	<input type="checkbox"/>
Taxi/ ride share service	<input type="checkbox"/>
Cycle	<input type="checkbox"/>
Walk	<input type="checkbox"/>





Sydney Metro - Western Sydney Airport




---

Are you a local business owner?

choose one

☒ Yes
 ☐ No








Sydney Metro - Western Sydney Airport




If yes, which industry is your business?

choose one

Administration & Office Support	<input type="radio"/>
Building & Construction	<input type="radio"/>
Education & Training	<input type="radio"/>
Agribusiness	<input type="radio"/>
Healthcare & Medical	<input type="radio"/>
Information & Technology	<input type="radio"/>
Legal	<input type="radio"/>
Manufacturing, Transport & Logistics	<input type="radio"/>
Real Estate & Property	<input type="radio"/>
Retail & Sales	<input type="radio"/>
Other	<input type="radio"/>
I am not a local business owner	<input type="radio"/>










Sydney Metro - Western Sydney Airport




Have you experienced traffic changes in your local area due to construction of major infrastructure projects? If so, what worked well to support or prepare you for these changes?

choose all that apply

Consultation with the local community on construction traffic routes	<input type="checkbox"/>
Advanced notice via email or letter	<input type="checkbox"/>
Adverts in the local paper	<input type="checkbox"/>
Reminders via text	<input type="checkbox"/>
Traffic signage one week ahead	<input type="checkbox"/>
Clear traffic diversion signage	<input type="checkbox"/>
None of the above	<input type="checkbox"/>
Other	<input type="checkbox"/>










Sydney Metro - Western Sydney Airport




We work with the Department of Planning, Industry and Environment to ensure all environmental aspects are considered. So we can tailor information provided to you, which of the following are important/ interesting to you?

Choose all that apply

Indigenous heritage	<input type="checkbox"/>
European heritage	<input type="checkbox"/>
Water and flooding	<input type="checkbox"/>
Biodiversity	<input type="checkbox"/>
Urban design	<input type="checkbox"/>
Traffic and transport	<input type="checkbox"/>
Land use and property	<input type="checkbox"/>
Soils and contamination	<input type="checkbox"/>
Air quality	<input type="checkbox"/>
Noise and vibration	<input type="checkbox"/>
Sustainability and climate change	<input type="checkbox"/>
Other	<input type="checkbox"/>













Sydney Metro - Western Sydney Airport

How would you like to receive information about this project?

choose all that apply

Broadcast / Radio	<input type="checkbox"/>
Local events	<input type="checkbox"/>
Local media	<input type="checkbox"/>
Phone	<input type="checkbox"/>
Email	<input type="checkbox"/>
Social media i.e. Facebook, Instagram	<input type="checkbox"/>
None of the above	<input type="checkbox"/>
Other	<input type="checkbox"/>










Sydney Metro - Western Sydney Airport

What is the main language spoken in your home?

choose one

English	<input type="radio"/>
Arabic	<input type="radio"/>
Tagalog	<input type="radio"/>
Sinhalese	<input type="radio"/>
Mandarin	<input type="radio"/>
Murmugan	<input type="radio"/>
Castilian	<input type="radio"/>
Hindi	<input type="radio"/>
Bengali	<input type="radio"/>
Greek	<input type="radio"/>
Italian	<input type="radio"/>
Other	<input type="radio"/>








Sydney Metro - Western Sydney Airport

Please note personal information will be collected but not publicly shared without prior consent.  
Please tell us if:

You prefer to remain anonymous

You would like to receive updates on the Sydney Metro Western Sydney Airport project. If so, don't forget to tell us who you are.

← swipEngage →



Sydney Metro - Western Sydney Airport

If you would like to receive updates on the Sydney Metro Western Sydney Airport project, please tell us who you are.




Name

Email

Postcode

← swipEngage →






Sydney Metro - Western Sydney Airport

What is your business / organisation name (if relevant)?

Please type here...

Characters left: 250





Government of New South Wales



NSW



sydney  
METRO

Sydney Metro - Western Sydney Airport

Sydney Metro Privacy Policy

We manage your personal information in accordance with the Privacy and Personal Information Protection Act 1998 (NSW). For further information, please visit Sydney Metro Privacy Policy: [Sydney Metro Privacy Policy](#)

I agree

I don't agree

← swipEngage →



Thank you for your time.





## Community survey feedback

In July 2020, the community was invited to participate in an online survey for the Sydney Metro – Western Sydney Airport project. Responses provided insight into how the community intends to use the new metro service, and how best to keep the community informed about potential construction impacts.

### Survey participants



**86%**

live or work in  
Greater Western Sydney

**14%**

live  
elsewhere

**21%**

own a local business in  
Greater Western Sydney

### Your main work industry



Building and construction



Administration and  
office support



Information technology



Education and training



Manufacturing, transport  
and logistics

### Would you like to see integrated precincts developed around future metro stations?



**92%**  
Yes



**8%**  
No

### Your future local metro station

**43%**

St Marys

**28%**

Orchard Hills

**12%**

Aerotropolis

**9%**

Airport stations

**8%**

Luddenham

### Most likely mode of travel to a Sydney Metro – Western Sydney Airport station



Drive



Train



Walk

### Your preferred method of communication about future project impacts



Email



Brochure/ leaflet



Local media or  
social media

### What communication methods have worked well on other projects to inform you about traffic impacts and construction noise?



Direct consultation from  
the project team



Advance notice via  
email or letter



Clear traffic diversion  
signage

### What environmental aspects of a major infrastructure project are most important to you?



Traffic  
and transport



Urban  
design



Noise  
and vibration



Land use  
and property



Air  
quality



Water  
and flooding

## Newsletter (June 2020)



# New metro rail takes off in Greater Western Sydney



Artist's impression of the Western Sydney Aerotropolis Station.

## Sydney Metro – Western Sydney Airport planning underway

The new Sydney Metro – Western Sydney Airport railway line will service Greater Western Sydney and the new Western Sydney International (Nancy-Bird Walton) Airport.

The formal planning process for the project is now underway, with new metro rail to become the transport spine for the growing region.

The project is a key commitment of the Western Sydney City Deal. It will support 14,000 new jobs during construction, including more than 250 new apprenticeships, in a major economic boost for the NSW and national economies.

A fast, safe and reliable metro rail service will connect communities with the new airport, jobs and services, delivering better access to employment opportunities, health and education facilities and leisure activities across Greater Sydney.

Six new stations are proposed to be built on the alignment with key stations at Western Sydney International airport, the Western Sydney Aerotropolis and St Marys – here customers can connect to the existing Sydney Trains suburban T1 Western Line.

The Australian and NSW governments have a shared objective of having Sydney Metro – Western Sydney Airport operational when the airport opens for passenger services.

### The project will include stations at:

- St Marys, interchanging with the existing suburban railway station and connecting customers with the rest of Sydney's rail network
- Orchard Hills, a new metro station to service a future commercial and mixed-use precinct
- Luddenham to service a future education, innovation and commercial precinct
- the new airport site; one at the airport passenger terminal and one at the airport business park
- the commercial heart of the Aerotropolis.

**Exact station locations are subject to ongoing investigations and project design work currently being undertaken.**

## City-shaping rail

The project (formerly known as Sydney Metro Greater West) is a key part of delivering an integrated transport system for the Western Parkland City. The Western Parkland City covers parts of Greater Western Sydney including the established centres of Greater Penrith, Liverpool and Campbelltown-Macarthur.

New metro rail will become the city's transport spine, linking residential areas with job hubs and the nationally-significant Western Sydney International. Transport for NSW is continuing planning for integrated transport links across the Western Parkland City.

The airport will support nearly 28,000 direct and indirect jobs by 2031 and underpin the development of the Western Sydney Aerotropolis, at the centre of the Western Parkland City.

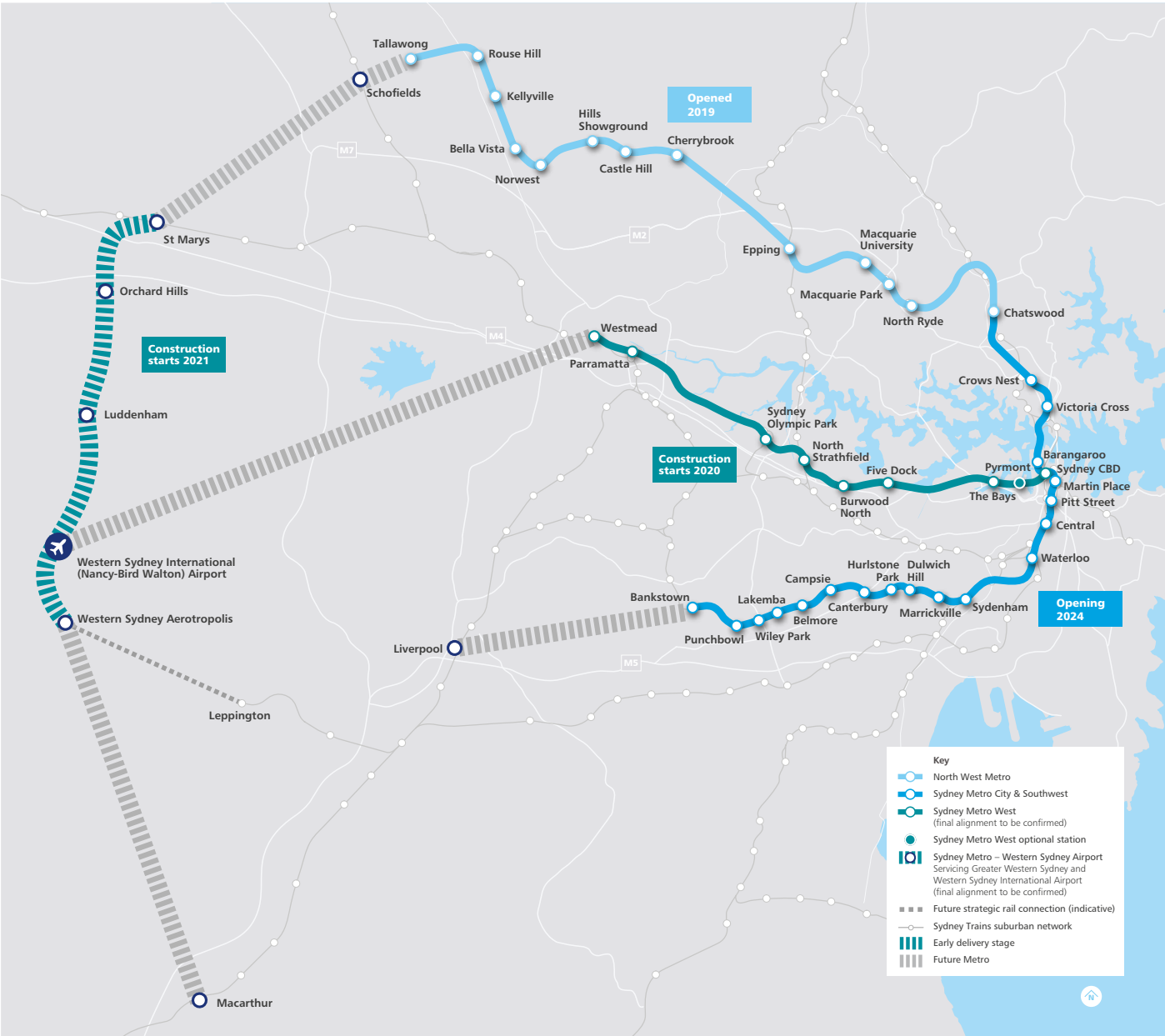
The airport and Aerotropolis will support around 200,000 new jobs in industries such as aerospace and defence, manufacturing, freight and logistics, tourism and research.

## The Western Sydney City Deal

Supporting the airport and Aerotropolis is a key part of the Western Sydney City Deal, a 20-year agreement signed in March 2018 by the Australian Government, the NSW Government and local governments of the Blue Mountains, Camden, Campbelltown, Fairfield, Hawkesbury, Liverpool, Penrith and Wollondilly.

The City Deal commits all levels of government to work together to deliver more jobs for Western Sydney and improve the region's liveability through 38 commitments, including better connectivity, an improved environment, and more housing and education outcomes for the region.

Delivering Sydney Metro – Western Sydney Airport, connecting the Aerotropolis, Western Sydney International and St Marys, is a key City Deal commitment.



The current and proposed Sydney Metro lines.  
Source: Sydney Metro

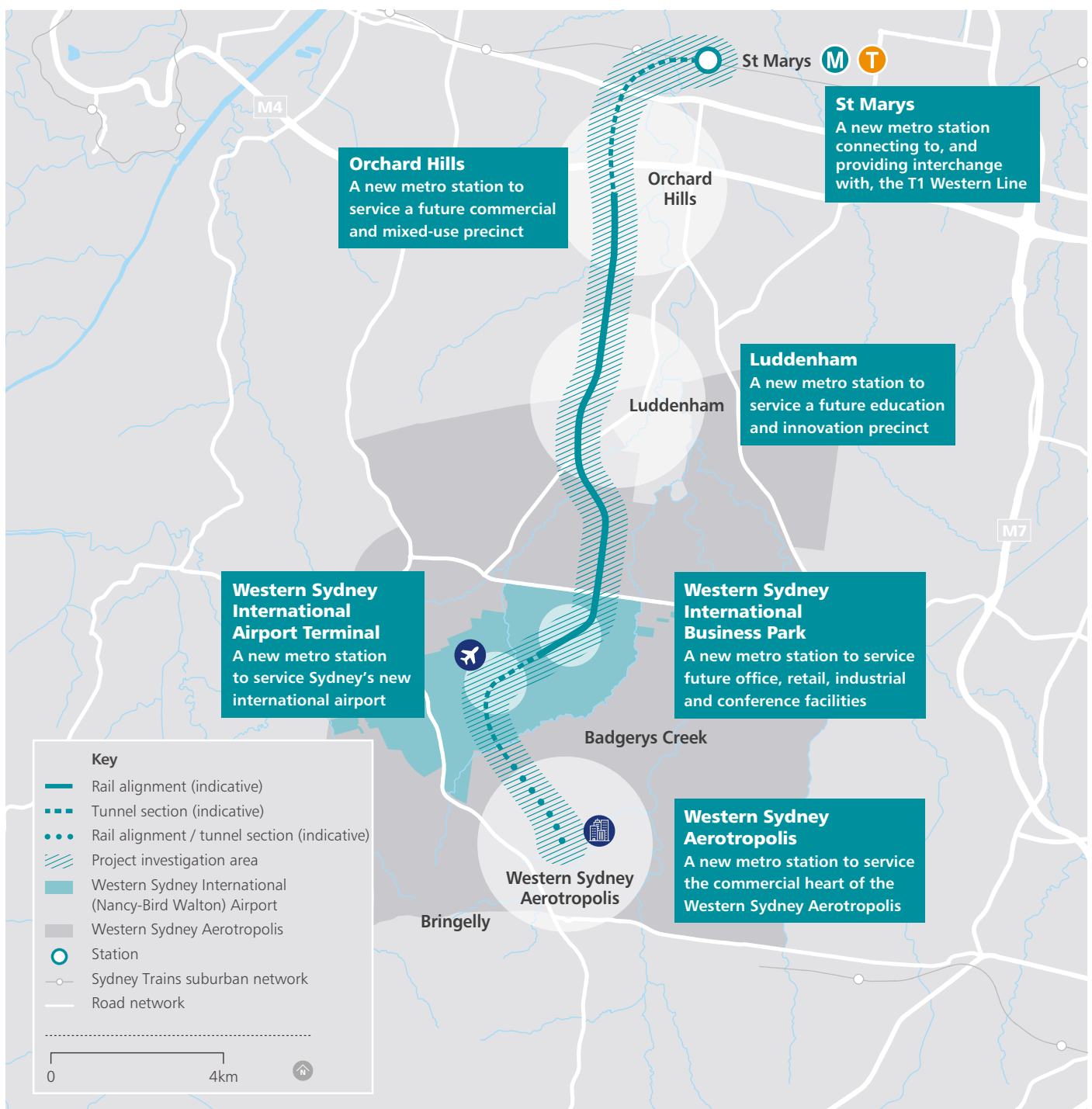
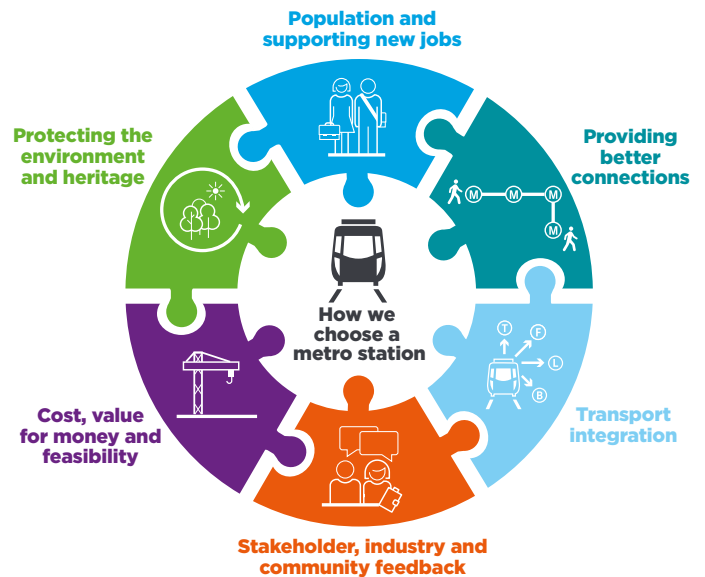


## Station locations

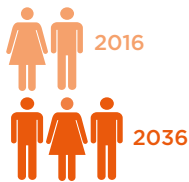
Sydney Metro has been working with stakeholders and industry to create a project that will deliver a fast, safe and reliable metro.

The project will support the success of the future Western Parkland City, with confirmed stations at St Marys, Orchard Hills, Luddenham, the Western Sydney Airport Business Park, Western Sydney Airport Terminal and Western Sydney Aerotropolis.

Exact station locations are subject to ongoing investigations and project design work currently being undertaken.

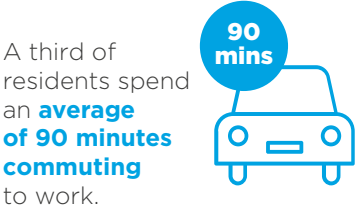


Why this project is needed

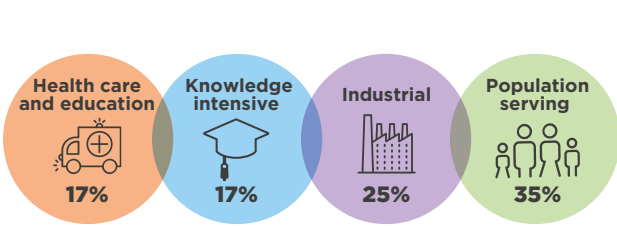


Western Sydney is currently home to **2 million people** with growth forecast to reach approximately **3.7 million people by 2036** – 55% of Sydney’s population.

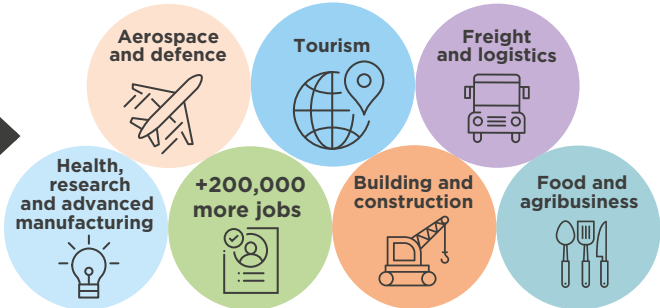
**74%** of residents **travel to work in a car.**



2016 Employment in the Western Parkland City



2036 Employment in the Western Parkland City



Western Sydney population sourced from NSW Population Projections by the NSW Department of Planning, Industry and Environment.

Artist’s impression of St Marys Station.








## Community feedback




In February 2020, the community was invited to participate in early engagement to help shape future metro station precincts.

### What you told us:

#### Your top transport priorities for your suburb in the future




-  Metro connections to the rest of Sydney's public transport system
-  Frequent connecting bus services to the new metro stations
-  More accessible transport connections

#### What you value most about your community


-  Access to public transport
-  Parks and recreational facilities
-  A sense of community

#### Services, retail and spaces which you told us are important for you to be able to access within your local communities




##### Community facilities

-  Community spaces
-  Government services
-  Child care facilities

##### Retail and services

-  Supermarket
-  Pharmacy
-  Gym

##### Public spaces

-  Seating and tables
-  Grass/soft landscaping
-  Playgrounds

We thank everyone who took the time to take part in this survey.

Feedback received will inform the design of future station precincts and broader strategic planning around transport needs for Greater Western Sydney.

## Integrated planning approach

There are a number of other projects in the surrounding area that will be delivered to help shape the future Western Parkland City.

Sydney Metro is working closely with other NSW Government agencies, interfacing projects and local government to ensure there is an integrated approach in the planning and development of the project.

## Working with the community

Sydney Metro has dedicated community relations specialists called place managers who can be contacted for further information about the project. Their role is to act as a single, direct contact between members of the community and the project team.

Our place managers will play a vital role in maintaining close and ongoing contact with local communities and stakeholders during the design and delivery of the Sydney Metro – Western Sydney Airport project.



A Sydney Metro community event.

## Early investigations

Sydney Metro is undertaking site investigations along the project alignment as part of early design and planning work. Activities include geotechnical investigations, noise monitoring and heritage and ecology surveying. The community will be notified in advance of works.

Sydney Metro will continue to undertake work across its projects in accordance with current government advice, and will continue to implement social distancing and travel and hygiene measures to protect employees and members of the community. Continuing with works is critical to ensuring project continuity, and the project team will continue to review and assess activities in line with any further updates.

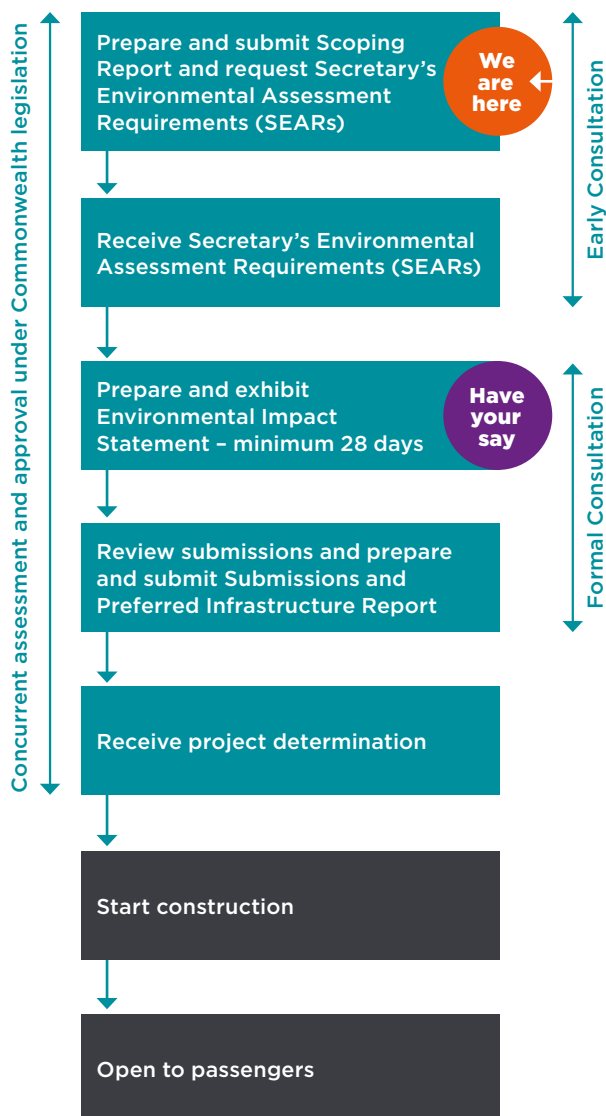
## Next steps

The Sydney Metro – Western Sydney Airport project team will develop detailed planning and environmental assessment documents for public exhibition and community consultation.

An Environmental Impact Statement for the project will be placed on public exhibition.

During the exhibition period, the community will be encouraged to have their say on topics including construction impacts, noise and vibration, site access, traffic and metro operations. The project team will also host a series of community information sessions where members of the Sydney Metro – Western Sydney Airport team can answer questions.

## NSW planning process for Sydney Metro – Western Sydney Airport



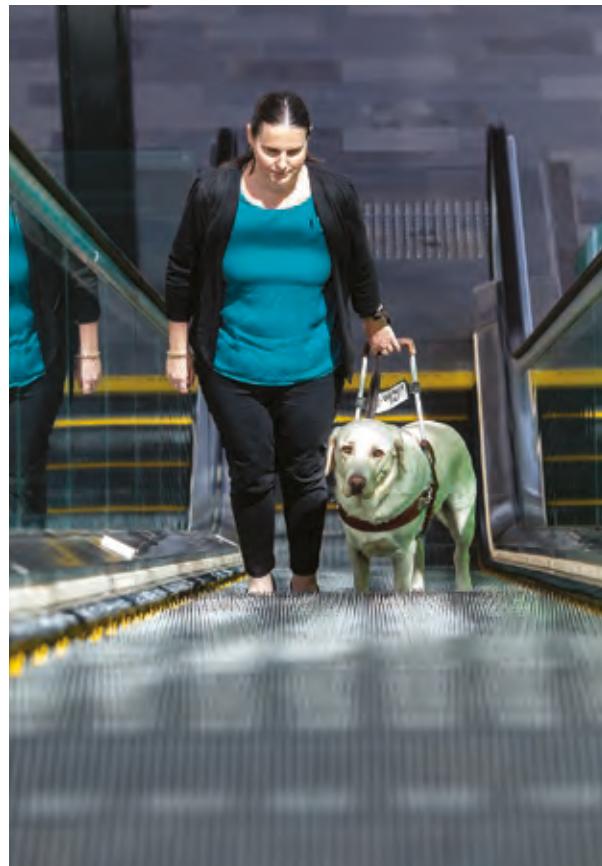
[sydneymetro.info](http://sydneymetro.info)



## Sydney Metro is Australia's first fully accessible railway

The metro public transport product has been designed to deliver safe, clean, comfortable services which will run on time, and are convenient, efficient, accessible and easy for customers to use.

Sydney Metro stations are fully accessible for people with reduced mobility, people with prams and children. This includes level access between platforms and trains and lifts at all stations.



Sydney Metro is Australia's first fully accessible railway.



Scan to see a video of the **Sydney Metro – Western Sydney Airport** project.



## Contact us



**1800 717 703** Community information line open 24 hours



[sydneymetrowsa@transport.nsw.gov.au](mailto:sydneymetrowsa@transport.nsw.gov.au)



Sydney Metro – Western Sydney Airport, PO Box K659, Haymarket NSW 1240



If you need an interpreter, contact TIS National on **131 450** and ask them to call **1800 717 703**



## Community survey (February - March 2020)

- Community survey flyer
- Community survey proforma
- Community survey feedback

# Planning for the Sydney Metro Greater West project is underway



Artist's impression of Sydney Metro Greater West.

**We would like you to participate in a short survey about the project. Your views will give us valuable insight into your transport priorities for your local area, and what community facilities you would like to see included in future station precincts.**

## About the project

Sydney Metro Greater West is the new railway line which will service Greater Western Sydney and the new Western Sydney International (Nancy-Bird Walton) Airport.

Key stations will be built at the airport, Western Sydney Aerotropolis and St Marys – where customers can connect to the existing Sydney Trains suburban T1 Western Line.

The new railway will become the transport spine for the Western Parkland City's growth for generations to come, connecting communities and travellers with the rest of Sydney's public transport system with a fast, safe and easy metro service.

The Australian and NSW governments have a shared objective of having the metro rail operational in 2026 when the Western Sydney Airport is planned to open.

## Have your say

The survey takes around 5 minutes to complete – to participate, visit: **[sydneymetro.info/greaterwest](https://sydneymetro.info/greaterwest)**  
The survey is open until 20 March 2020.

Please send us an email if you would like to register for project updates.

[sydneymetro.info](https://sydneymetro.info)



**1800 717 703** Community information line



**[greaterwestmetro@transport.nsw.gov.au](mailto:greaterwestmetro@transport.nsw.gov.au)**



Sydney Metro Greater West,  
PO Box K659, Haymarket NSW 1240



If you need an interpreter, contact TIS National on **131 450** and ask them to call **1800 717 703**



## **Sydney Metro Greater West Servicing Sydney's new airport**

Sydney Metro Greater West is the new metro railway line which will service Greater Western Sydney and the new Western Sydney International (Nancy-Bird Walton) Airport.

The new railway will become the transport spine for the Western Parkland City's growth for generations to come, connecting communities with the new airport and providing better access to more employment opportunities, health and education facilities and leisure activities across Greater Sydney.

Key stations will be built at the airport, Western Sydney Aerotropolis and St Marys – where customers can connect to the existing Sydney Trains suburban T1 Western Line.

The NSW and Australian governments have a shared objective of having the metro rail operational when Western Sydney International is scheduled to open.

### **Have your say about transport priorities and future station precincts in your area.**

Your views will give us a valuable insight into your transport priorities for your local area and what community facilities you would like to see included in future station precincts.

Please share your views by taking five minutes to complete the survey.

*Please note: personal information will be collected but not publicly shared without prior consent.*

#### **1. WHAT SUBURB DO YOU LIVE IN?**

#### **2. WHAT DO YOU VALUE MOST ABOUT THE COMMUNITY YOU LIVE IN? *Select all that apply***

- Housing options
  - Housing that is affordable
  - Job opportunities
  - Access to public transport
  - Walking and cycling links
  - Parks and recreational facilities
  - Natural environment – trees, flora and fauna
  - A sense of community
  - Cultural activities
  - Local heritage
  - Cafes, restaurants and shops
  - Childcare
  - Children's playgrounds
  - Schools and education facilities
  - Medical facilities
  - Aged care facilities
  - Community facilities such as libraries, community centres
  - Public art
  - Sporting facilities
- Other: [insert 140 character limit]

**3. GOVERNMENT HAS COMMITTED TO BUILDING A METRO TO SERVICE THE NEW AIRPORT. WHAT DO YOU THINK SHOULD BE THE OTHER TRANSPORT PRIORITY FOR YOUR SUBURB IN THE FUTURE? *Pick one***

- More frequent connecting bus services to the new metro
- New public transport routes
- More accessible public transport connections
- Improving road safety
- Improving passenger safety on public transport
- Improving cycling infrastructure
- Improving pedestrian infrastructure, including accessibility
- Modernising the existing network
- Reducing road congestion
- Other \_\_\_\_\_

**4. WHAT IS THE MOST COMMON MODE OF TRANSPORT YOU CURRENTLY USE? *Pick one***

- Train
- Local bus
- Drive
- Cycle
- Walk
- School bus
- Community transport
- Taxi/Ride share service
- I get a lift with someone
- Other \_\_\_\_\_

**5. HOW OFTEN DO YOU CURRENTLY USE PUBLIC TRANSPORT? *Pick one***

- Daily
- Between 1 and 2 days per week
- Between 3 and 6 days per week
- Around once a month
- I don't use public transport

**6. WHAT BARRIERS PREVENT YOU FROM USING PUBLIC TRANSPORT MORE OFTEN? *Pick one***

- Lack of pedestrian infrastructure
- Unsafe pedestrian road crossings
- Infrequent transport services
- Safety and security concerns of network



- Unreliable services
- Not easily accessible for hearing and visually impaired users
- Other\_\_\_\_\_

Building a metro station will give people an opportunity to live and work closer to a public transport connection.

**7. WHAT, IF ANY, POTENTIAL CHANGES ARE YOU MOST CONCERNED ABOUT FROM HAVING A METRO LINE BUILT IN YOUR AREA?**

---

---

---

---

---

**8. WHICH OF THE FOLLOWING POTENTIAL BENEFITS OF A METRO RAIL DO YOU SUPPORT? PICK THREE**

- Create more jobs near metro station locations
- Provide the opportunity to revitalise areas with cafes, restaurants and shops
- Connect communities and travellers with the rest of Sydney's public transport system with a fast, safe and easy metro service
- Reduced travel on roads
- Improve transport connections between other modes of transport including the existing rail network and rapid bus connections
- A 21<sup>st</sup> century transport option for Western Sydney
- None of the above.
- Other\_\_\_\_\_

New metro stations provide opportunities to create modern precincts that service the community's needs.

**9. WHAT TYPE OF RETAIL AND SERVICES WOULD YOU LIKE TO SEE AT A STATION PRECINCT?**

- Supermarket
- Pharmacy
- Dry cleaner
- Gym
- Other\_\_\_\_\_

**10. WHAT CULTURAL AND COMMUNITY FACILITIES WOULD YOU LIKE TO SEE AT A STATION PRECINCT?**

- Community spaces
- Government services
- Child care facilities
- Public art
- Other \_\_\_\_\_

**11. WHAT WOULD YOU LIKE INCLUDED IN NEW PUBLIC SPACES IN STATION PRECINCTS?**

- Playgrounds
- Grass/soft landscaping
- Seating and tables
- Other \_\_\_\_\_

**12. DO YOU HAVE ADDITIONAL COMMENTS?**

---

---

---

---

---

**Demographics (optional questions)**

**We want to consult widely and as fairly as possible. Please help us by telling us:**

**Gender**

- Male
- Female
- Other

**Age bracket**

- |                   |                       |
|-------------------|-----------------------|
| • Younger than 15 | • 45 – 54             |
| • 15 – 24         | • 55 – 64             |
| • 25 – 34         | • Older than 65 years |
| • 35 – 44         |                       |

**Main language spoken at home?**

- |           |             |           |
|-----------|-------------|-----------|
| • English | • Lebanese  | • Bengali |
| • Arabic  | • Mandarin  | • Greek   |
| • Tagalog | • Cantonese | • Italian |
| • Samoan  | • Hindi     | • Other   |



**Please tell us how you found out about this survey**

- Website
- Council
- Word of mouth
- News
- Email
- Facebook/Twitter
- Local representative
- Local event

**Please note: personal information will be collected but not publicly shared without prior consent.**

Please tell us if:

- ☐ You prefer to remain anonymous
- ☐ You would like to receive updates on the Sydney Metro Greater West project. If so, don't forget to tell us who you are below.

First name:

Last name:

Email:

Phone:

Address line 1:

Address line 2:

City:

State:

Postcode:

# Community survey feedback

In February 2020, the community was invited to share their views to help shape future metro station precincts in Sydney's Greater West

## Survey participants



Males  
**60.9%**



Females  
**38.6%**

Other  
**0.5%**

Aged

35-44 **43%** 25-34 **24%** 45-54 **15%**

## You live in

Marsden Park  
Claremont Meadows  
Ropes Crossing  
Schofields  
St Marys  
Orchard Hills  
Kingswood

## You speak

English  
Hindi  
Gujarati  
Tagalog



## You value



Access to public transport



Parks and recreation spaces



A sense of community



Natural environment

## How you get around



**46%**



**43%**



**6%**

## Public transport use

**41%**  
use daily

**17%**  
3-6 days per week

**19%**  
once a month

**14%**  
don't use

## The benefits of a metro station in your community



Metro connections with other public transport



Reduced travel on roads



Improved connections



Jobs created close to new metro stations



Local areas revitalised with cafes, restaurants & shops

## Retail and services which are important to your community

### Retail



**42%**  
Supermarket



**27%**  
Pharmacy



**14%**  
Gym

### Community facilities



**35%**  
Community space



**28%**  
Government services



**22%**  
Child care

### Public spaces



**38%**  
Tables/seating



**34%**  
Grass/landscaping



**24%**  
Playgrounds

## Top transport priorities



New public transport routes



Connecting bus services to new metro stations



More accessible public transport connections



Reducing road congestion

## Public transport barriers



Infrequent or unreliable



Safety and security



Lack of pedestrian infrastructure



Not easily accessible

## What else we heard from you



- ✓ You support a growing Western Sydney
- ✓ You support job creation for your local areas
- ✓ You would like future connectivity with other metro lines
- ✓ Less time commuting means more time with family



## Aboriginal stakeholder consultation newspaper advertisement (May 2019)

*Extract from Technical paper (Aboriginal heritage)*

## Appendix C Newspaper advertisements

The Aboriginal Stakeholder Consultation newspaper advertisement was published in the Liverpool Leader on 22 May 2019, the Penrith Press on 23 May 2019 and the Western Weekender on 17 May 2019. The full advertisements are included following in newspaper extracts.

Motoring	Notices
<p><b>Cars Wanted</b></p> <p><b>AAAA ANY CAR TRUCK UTE VAN 4WD</b> Bought fr. <b>\$500</b> or <b>\$50 TO \$30,000</b> 4 USED CARYARD OR WRECKING &amp; SCRAP CALL NOW 24/7 <b>0424 163 489</b> <b>100% FREE PICKUP IN 1HR or</b> <b>BEST PRICE CASH, LOCAL SERVICE</b> BUYUSEDCARS.COM.AU Year 1916-2019 REGISTERED OR UNREGISTERED, RUNS OR BROKEN DAMAGED OR CLEAN</p> <p><b>buy search sell</b> Call 13 11 13</p>	<p><b>General Notices</b></p> <p>Aboriginal Stakeholder Consultation Sydney Metro Greater West (SMGW) Proponents: Sydney Metro c/- MDA Level 25, 680 George Street Sydney, NSW 2000 Australia</p> <p>Sydney Metro is Australia's largest public transport project. It will transform Sydney, delivering more trains and faster services for customers across the network.</p> <p>Sydney Metro Greater West is the new railway line which will service Greater Western Sydney and the new Western Sydney International (Nancy-Bird Walton) Airport. Sydney Metro is seeking to identify Aboriginal persons or organisations who wish to be consulted in relation to an Aboriginal cultural heritage assessment for this planned transport infrastructure project across the suburbs of Kingswood, Werrington, St Marys, Glenmore Meadows, Orchard Hills, Ludbrook, Badgers Creek, Greendale, Brighell and Rossmore, NSW.</p> <p>Interested Aboriginal persons or organisations who hold cultural knowledge relevant to this project are requested to register their interest in writing to:</p> <p>Darren Jordan AECOM Australia Pty Ltd PO Box 4416, Chifley Post Office, Sydney, NSW 1230 PH: +61 2 8534 0621 Fax: +61 2 8534 0601 Email: darren.jordan@aecom.com</p> <p>Expressions of interest should include current contact details. The closing date for registration is 7 June 2019.</p> <p>Please be advised that the details of all parties who register will be forwarded to the Office of Environment and Heritage and the relevant Local Aboriginal Land Councils unless specified otherwise.</p> <p><b>Ka-ching!</b> Make bank, sell your stuff for free with Buy Search Sell.</p> <p><b>FREE TOURS</b></p> <p><b>Reclaim the garage</b> Call 13 11 13</p> <p><b>buy search sell</b> Call 13 11 13</p>

Figure C-1 Liverpool Leader extract, 22 May 2019

Motoring	Notices
<p><b>Cars Wanted</b></p> <p><b>TOP CASH 7 DAYS</b> For all Cars, Vans, Utes, 4x4, Trucks, etc. <b>\$250 - \$30,000*</b> Call George 0404 714 714</p> <p><b>WE WILL BEAT ANY PRICE</b> <b>1HR PICKUP</b> or 100% free removal <b>WE ARE LOCAL</b></p> <p><b>Sold!</b></p> <p><b>buy search sell</b></p>	<p><b>General Notices</b></p> <p>Aboriginal Stakeholder Consultation Sydney Metro Greater West (SMGW) Proponents: Sydney Metro c/- MDA Level 25, 680 George Street Sydney, NSW 2000 Australia</p> <p>Sydney Metro is Australia's largest public transport project. It will transform Sydney, delivering more trains and faster services for customers across the network.</p> <p>Sydney Metro Greater West is the new railway line which will service Greater Western Sydney and the new Western Sydney International (Nancy-Bird Walton) Airport. Sydney Metro is seeking to identify Aboriginal persons or organisations who wish to be consulted in relation to an Aboriginal cultural heritage assessment for this planned transport infrastructure project across the suburbs of Kingswood, Werrington, St Marys, Glenmore Meadows, Orchard Hills, Ludbrook, Badgers Creek, Greendale, Brighell and Rossmore, NSW.</p> <p>Interested Aboriginal persons or organisations who hold cultural knowledge relevant to this project are requested to register their interest in writing to:</p> <p>Darren Jordan AECOM Australia Pty Ltd PO Box 4416, Chifley Post Office, Sydney, NSW 1230 PH: +61 2 8534 0621 Fax: +61 2 8534 0601 Email: darren.jordan@aecom.com</p> <p>Expressions of interest should include current contact details. The closing date for registration is 7 June 2019.</p> <p>Please be advised that the details of all parties who register will be forwarded to the Office of Environment and Heritage and the relevant Local Aboriginal Land Councils unless specified otherwise.</p>
Real Estate	Notices
<p><b>Coastal Properties</b></p> <p><b>ABSOLUTE BARGAIN</b> 1 Acre Parcel \$68,550 pay 5% now &amp; 5% x 52 wks. negobtable 11% P.A. 04 17 007 792 24 HRS</p> <p><b>Shared Accommodation</b></p> <p><b>Woolcock</b> Single working male 35+ large fully furn room in modern home, close shops/ trans. \$180 PW includes exp, aircon, foxtel &amp; internet 0415 465 015</p>	<p><b>General Notices</b></p>

Figure C-2 Penrith Press extract, 23 May 2019



## Can you conquer the biggest burrito of all?



Nicole Barton, Emily Fenczuk, Nathan Taylor and Troy Dodds take on the challenge.

For all the big lovers of Mexican food out there, Mad Mex in Westfield Pennant Hills has just the thing for you and your taste buds.

For the month of May you and your amigos can battle it out to see who can defeat a one kilo burrito in the quickest time.

The Weekender's news team took part in the annual Big Burrito Challenge this week, with sports journalist Nathan Taylor crowned the office champion.

If you are one of the first 10,000 people to conquer the Big Burrito in one sitting you will walk home with a limited-edition, Luchador-themed bottle-opener keychain which will grant you free guacamole at any Mad Mex in 2019.

Challengers can fully customise their Big Burrito to their personal dietary requirements with meat, vegan or vegetarian options all available.

As usual, each Big Burrito is packed full of Mad Mex's authentic and fresh ingredients including their delicious black beans made to their famous recipe and homemade pine de gallo. You can also add shredded lettuce, grated cheese, sour cream and spicy salsas depending on how brave you are.

The Big Burrito is \$25 and available until the end of the month, so head down to become a champion and win free guac for the rest of the year!

For more information, visit [www.madmex.com.au](http://www.madmex.com.au).

### Aboriginal Stakeholder Consultation

Sydney Metro Greater West (SMGW)

Proponent: Sydney Metro c/- M2A Level 25,  
680 George Street Sydney, NSW 2000 Australia

Sydney Metro is Australia's largest public transport project. It will transform Sydney, delivering more trains and faster services for customers across the network.

Sydney Metro Greater West is the new railway line which will service Greater Western Sydney and the new Western Sydney International (Nancy-Bird Walton) Airport. Sydney Metro is seeking to identify Aboriginal persons or organisations who wish to be consulted in relation to an Aboriginal cultural heritage assessment for this planned transport infrastructure project across the suburbs of Kingswood, Werrington, St Marys, Claremont Meadows, Orchard Hills, Luddenham, Badgers Creek, Greendale, Bringelly and Rossmore, NSW.

Interested Aboriginal persons or organisations who hold cultural knowledge relevant to this project are requested to register their interest in writing to:

**Darran Jordan**  
AECOM Australia Pty Ltd  
PO Box Q410, QVB Post Office,  
Sydney, NSW 1230  
Ph: +61 2 8934 0621  
Fax: +61 2 8934 0001  
Email: [darran.jordan@aecom.com](mailto:darran.jordan@aecom.com)

Expressions of interest should include current contact details.  
The closing date for registration is **3 June 2019**.

Please be advised that the details of all parties who register will be forwarded to the Office of Environment and Heritage and the relevant Local Aboriginal Land Councils unless specified otherwise.

The weekender is weekender - Friday, May 17, 2019

Figure C-3 Western Weekender extract, 17 May 2019