

# 3.3

## Lobby



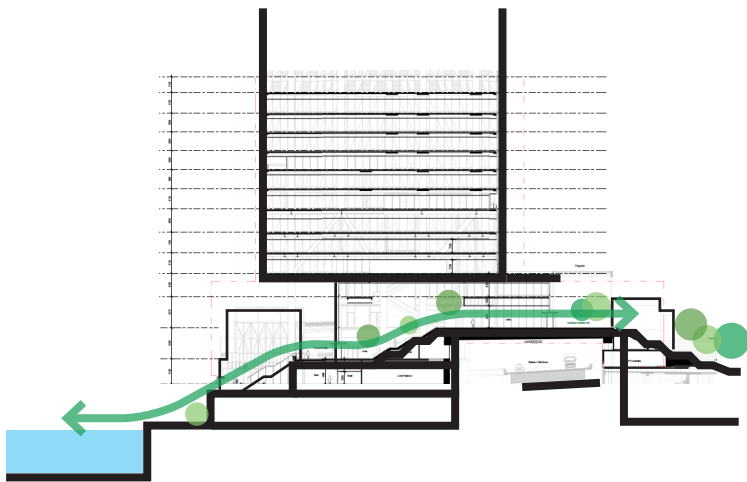




# 3.3 Lobby

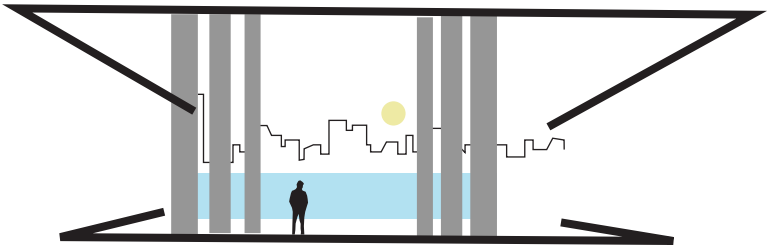
## Vision

The tower lobby is in many ways the heart of Cockle Bay Park. It is a connecting space with easy wayfinding and a variety of spaces, atmospheres and views to the surrounding park or ever changing waterfront



### Connecting the Park and the Water

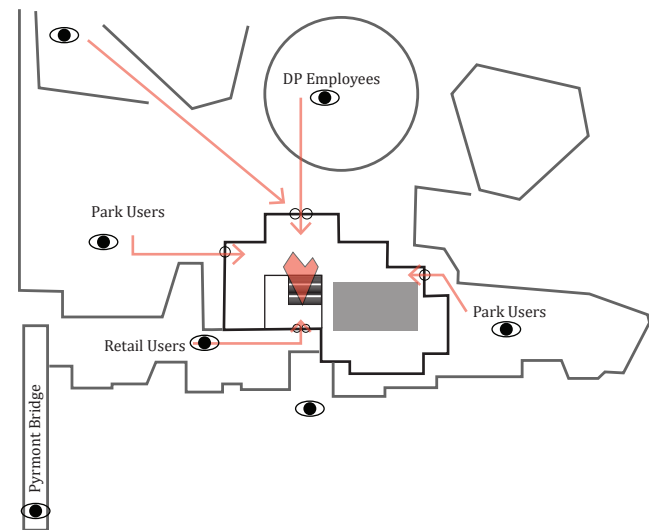
The triple height lobby space is designed to create transparency and to celebrate a visual connection between the Park and the Harbour.  
Greenery fills the lobby as a natural park extension. The view on the harbour is maximized throughout the lobby.



### Arrival Experience

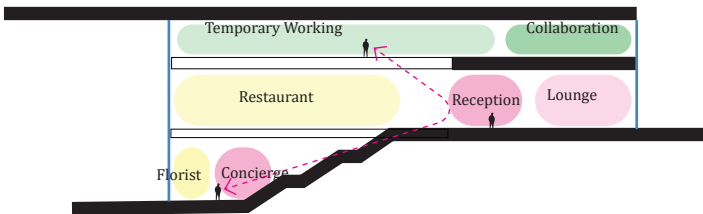
From the main entrance unfolds a breathtaking view to Darling Harbour.  
It provides an unforgettable first impression of the experience in the workplace.

3.3 Lobby



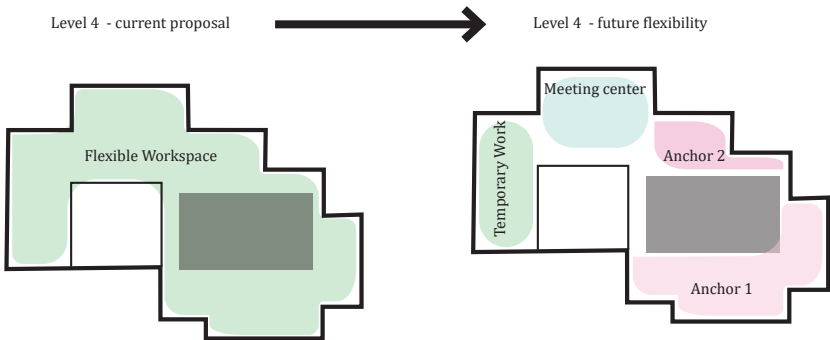
Central Point

The tower lobby is located in the center of the project. Different user paths cross here, creating a vibrant meeting space.



Multiple Functions & Diversity

The lobby brings together many different functions and users on multiple levels. Open and transparent space provides a visual connectivity between diverse usage, assuring a vibrant atmosphere.



Flexibility

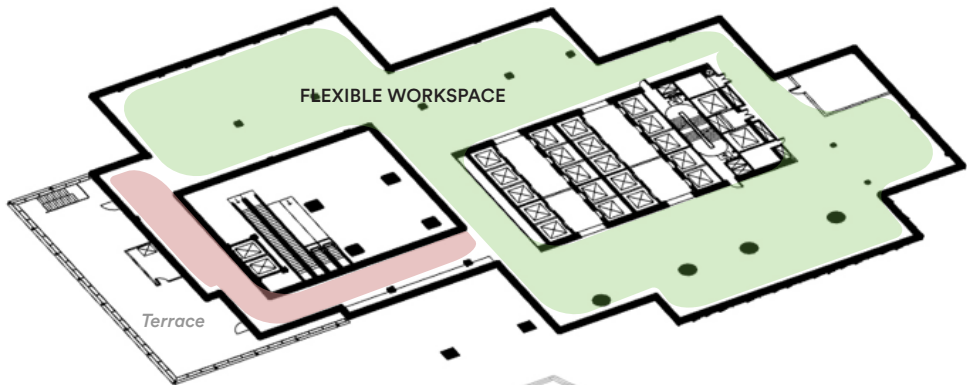
The design guarantees full flexibility of the lobby layout. Flexible open space can be rearranged in multiple ways. Additional functions or possible dedicated anchor tenants lobbies can be easily incorporated.



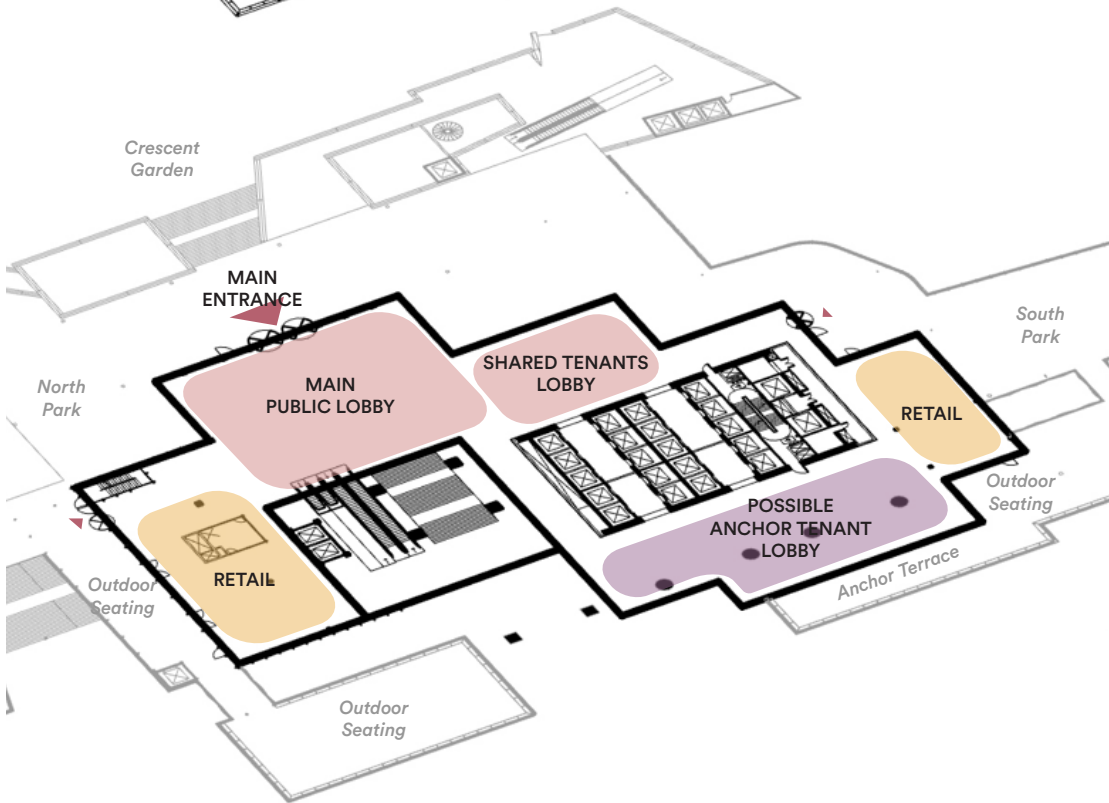
3.3 Lobby

Base case

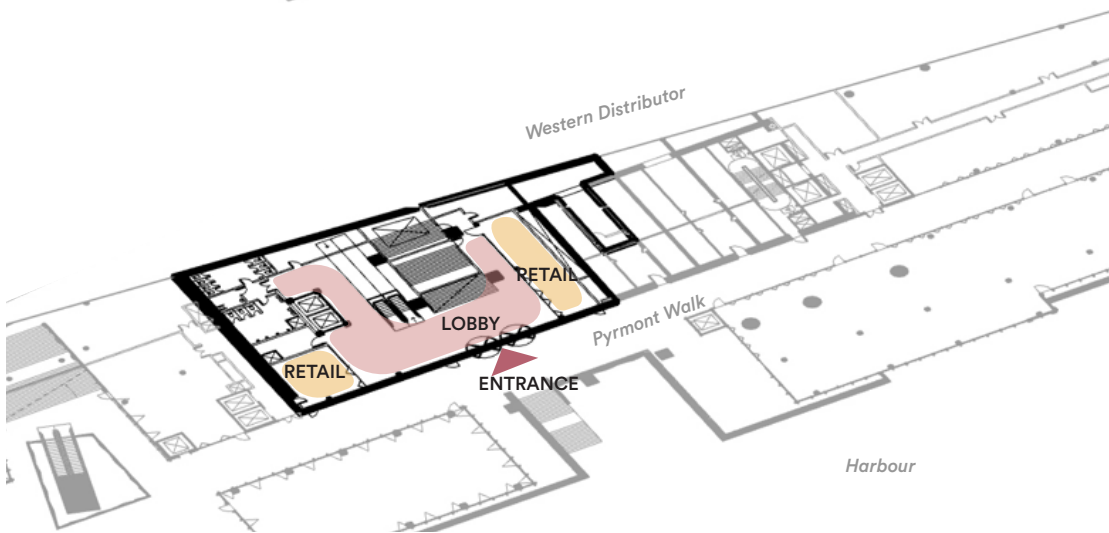
Level 4



Level 3



Level 2



- public/shared lobby
- possible anchor tenant dedicated lobby
- retail
- flexible workspace









3.3 Lobby

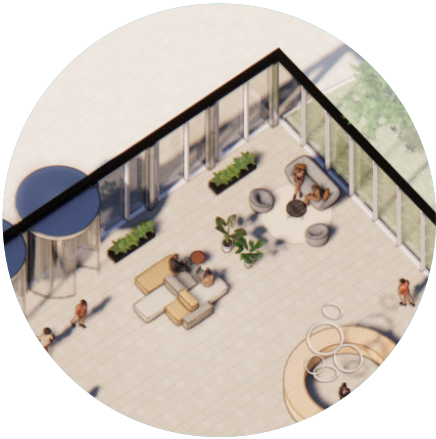
Lobby / L03 / Base case

The 3rd floor of the lobby sits on top of the commercial podium surrounded by the trees of the park plaza. It showcases a monumental staircase boasting epic views of the harbour. It boasts a wide range of functions both for public and private activities. The public will find two food and beverage destinations as well as informal spaces for work, discussion and meeting.

A variety of functions and experience:



Reception



Lounge



Shared public lobby



Anchor lobby



Temporary working



Informal meeting



Restaurant



Charging Station



Bistro



3.3 Lobby

Level 3 - indicative layout plan













3.3 Lobby

Flexible workspace

The flexible workspace space will offer the possibility to work in the heart of the project in a space surrounded by park and harbour views. This space has been designed to be as flexible as possible in order to be able to adapt to future needs of all generations. This space can offer open working spaces, meeting facilities as well as collaboration and focus areas.







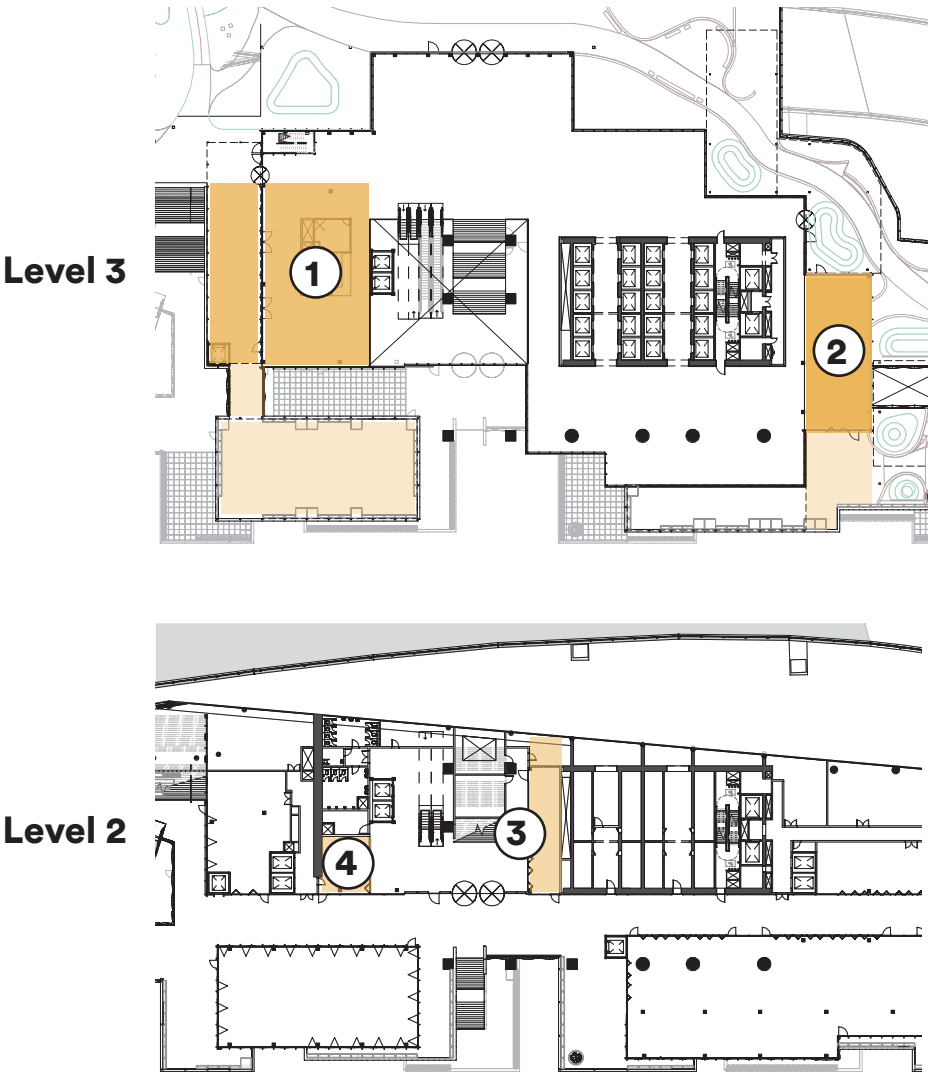


### 3.3 Lobby

# Lobby Retail

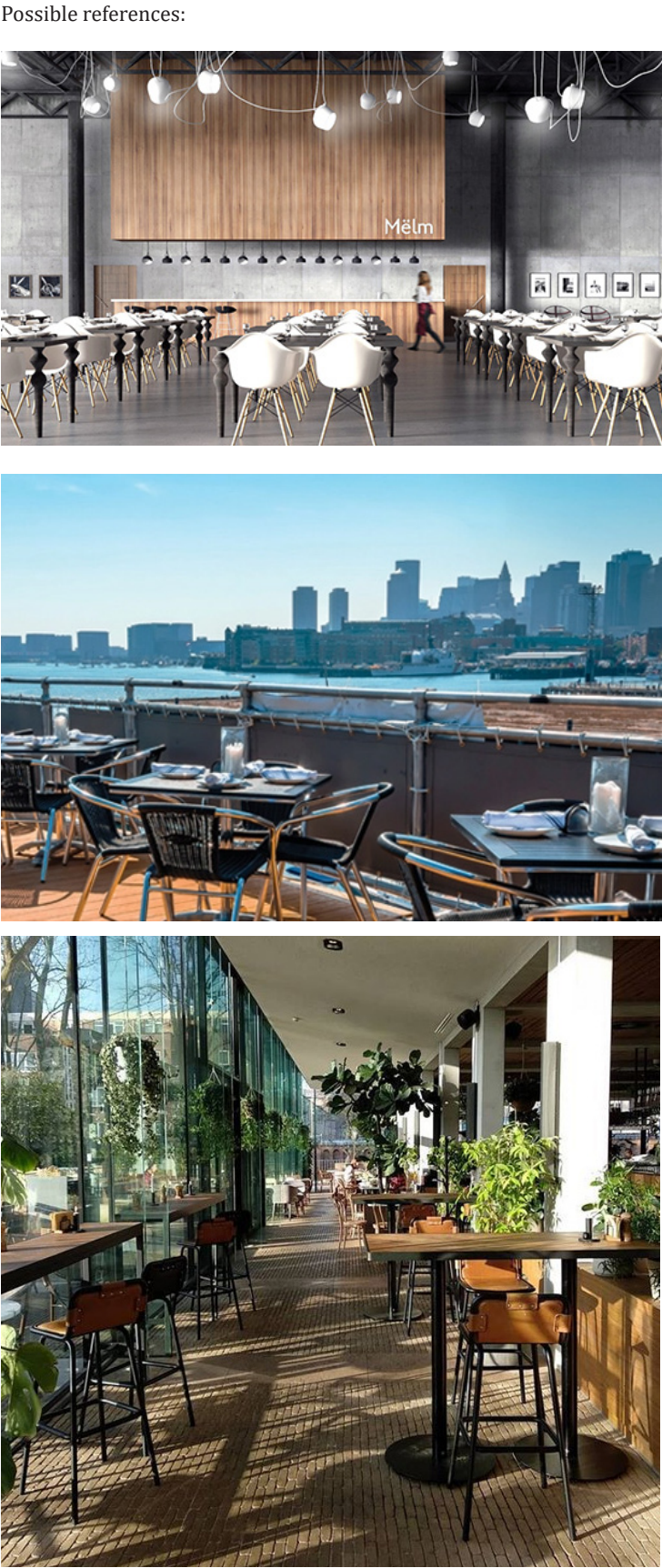
The lobby will be further activated by offering diverse retail or food & beverage locations on L02,L03 and L04 of ranging sizes and atmospheres. These spaces will cater each level of the lobby with rich connections to the exterior.

#### Retail Locations



#### 1. Northern Lobby Retail

The principle food and beverage offer is located on the North Western corner of the lobby and boasts access to two terraces.





2. Southern Lobby Retail

A more intimate F&b offer has been placed facing the Southern park lands to the left of the entry. This space will be acoustically sheltered from the lobby all while remaining close to its heart.



Possible references:

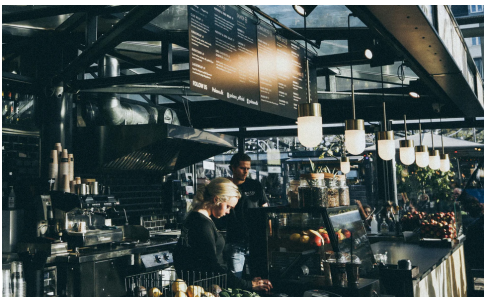
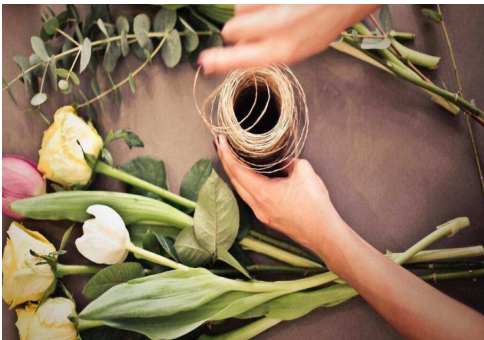


3./4. Central Lobby Retail

Upon entering the lobby on L02, one will find a retail offer on your right bridging between the main podium and the tower. This space will boast phenomenal views to the West over the central node towards the harbour.



Possible references:





3.3 Lobby

Lobby Materiality

Reference images



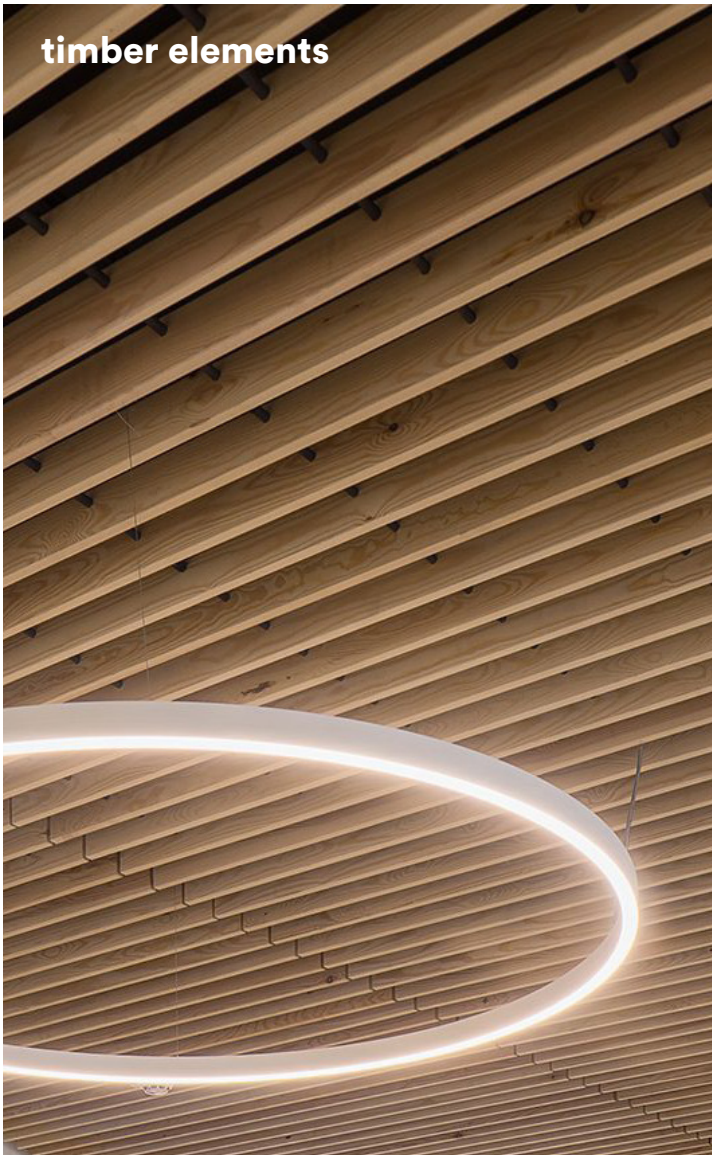


# Lobby Material Palette

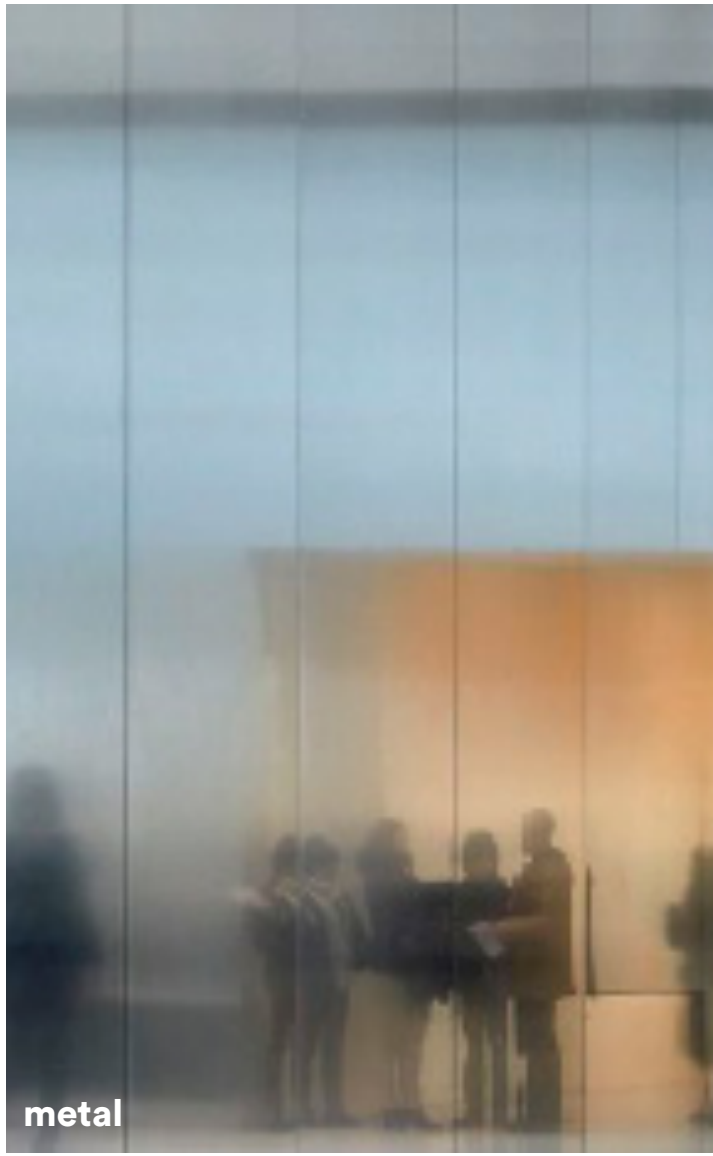
In order to create the most welcoming and comfortable atmosphere in the lobby, the design utilises warm and natural materials that reflect the most daylight possible.



natural stone



timber elements



metal



vegetation - park extension