

St Matthews Catholic High School

LANDSCAPE REVISED CONCEPT

State Significant Development Application

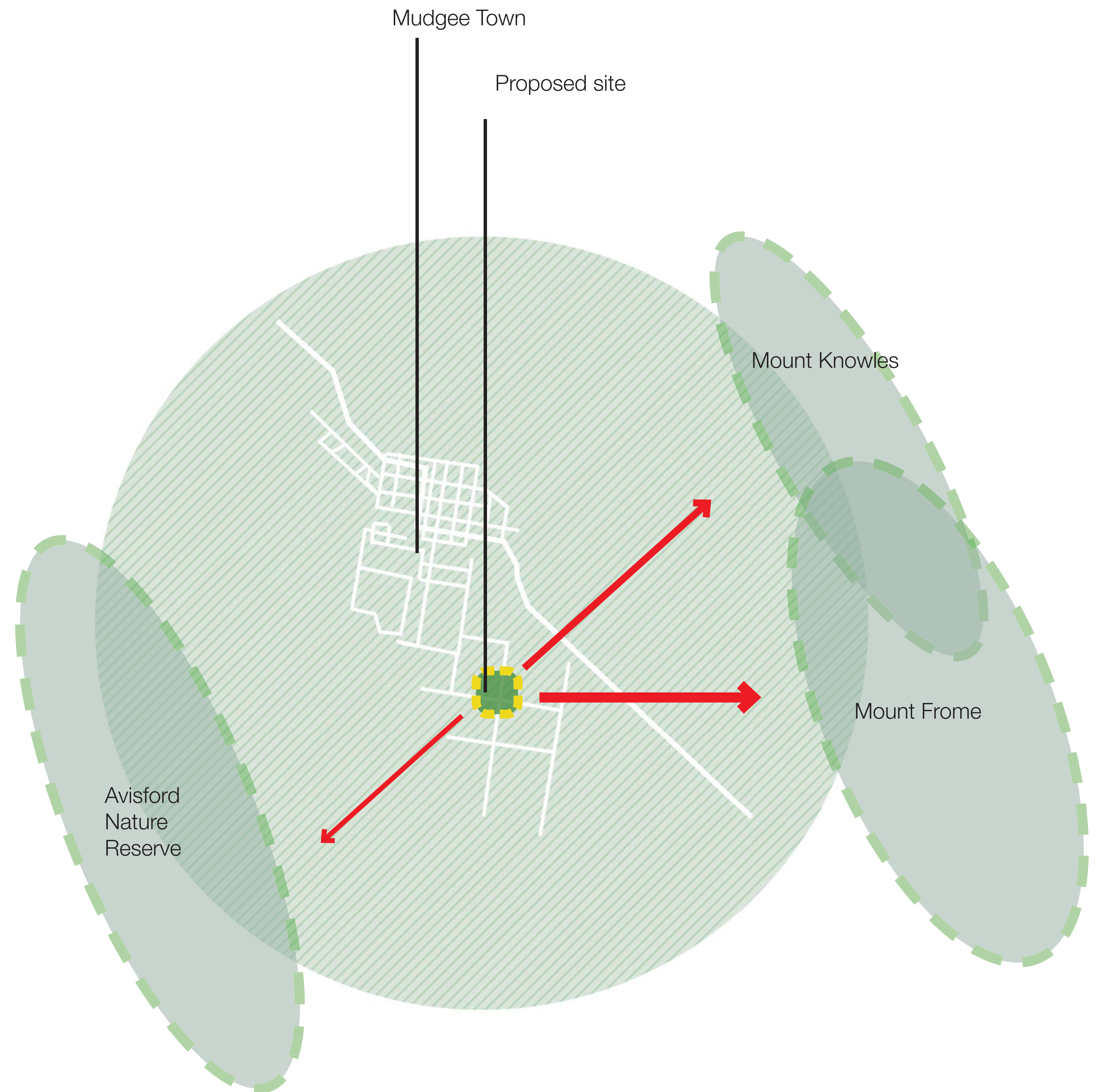
School's Vision

‘At St Matthews Catholic School we believe that all in our community can learn at high levels in a Christ-centred, engaging, collaborative, and nurturing environment.’





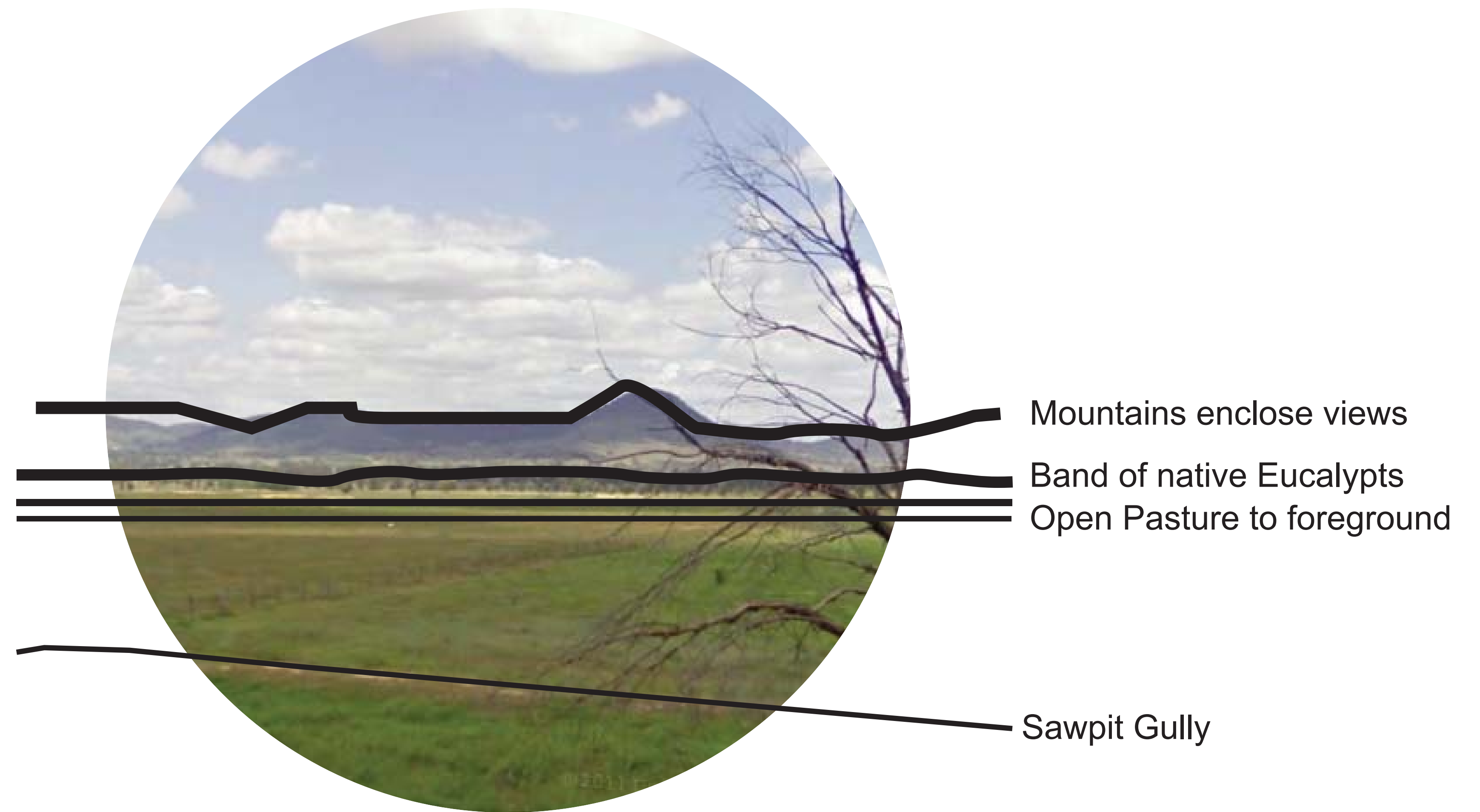
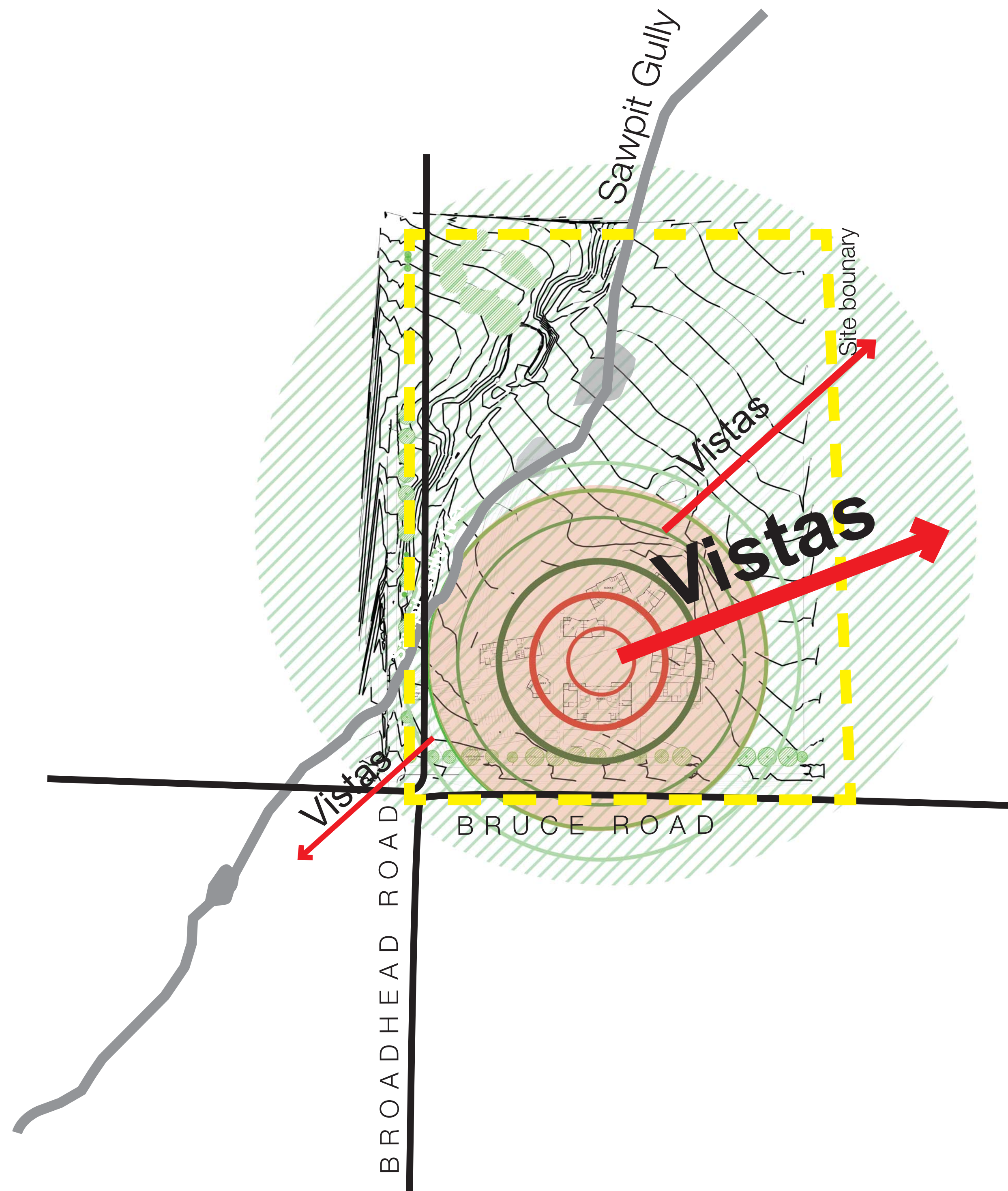
MUDGEE



"NEST IN THE HILLS"

Site context analysis

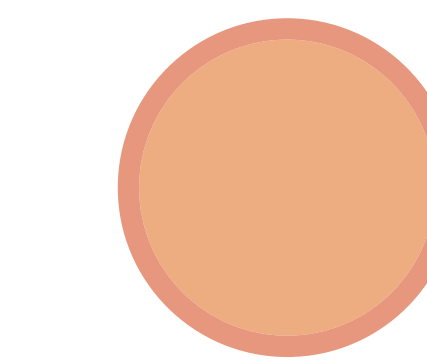
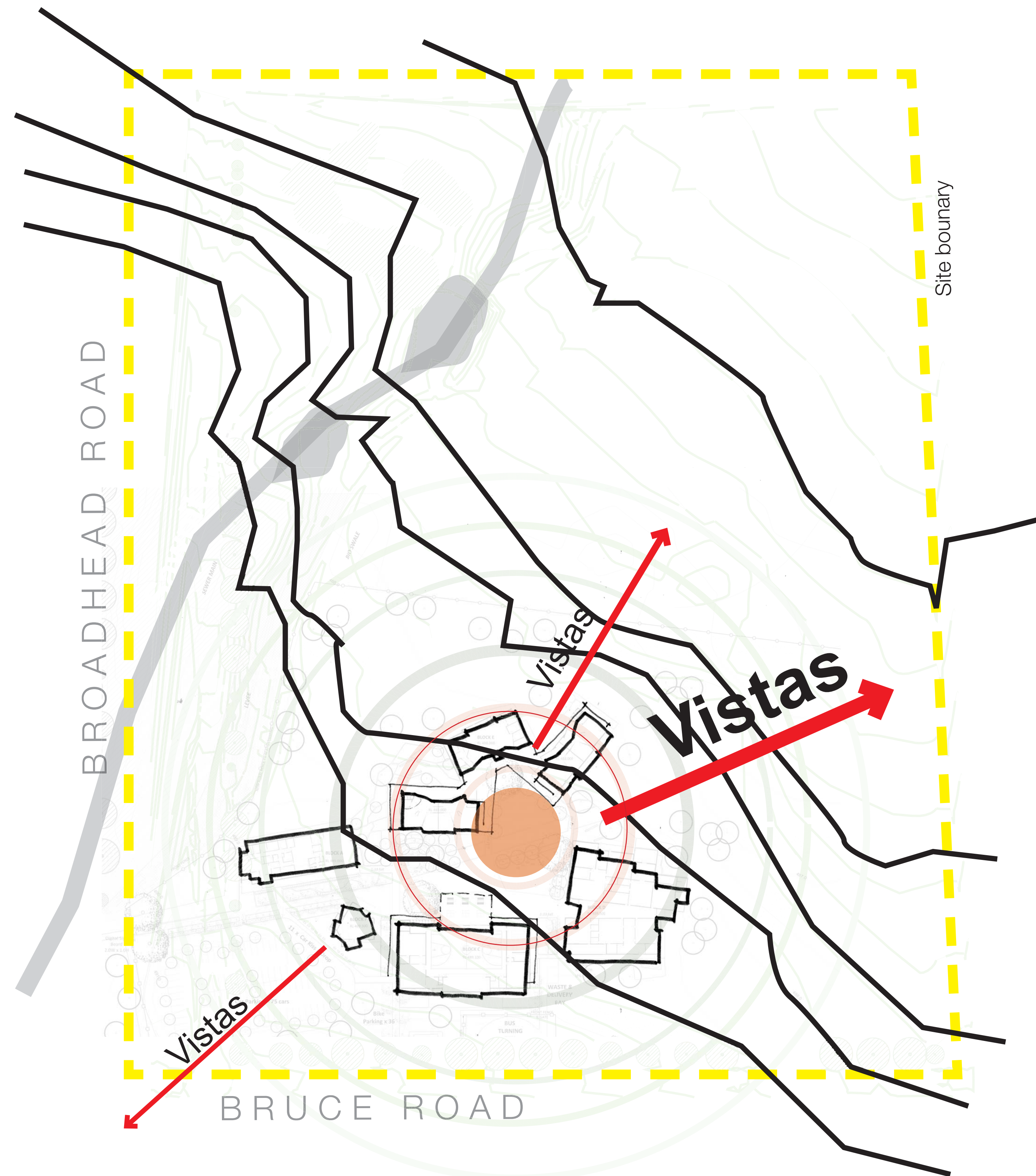




Landscape setting and character

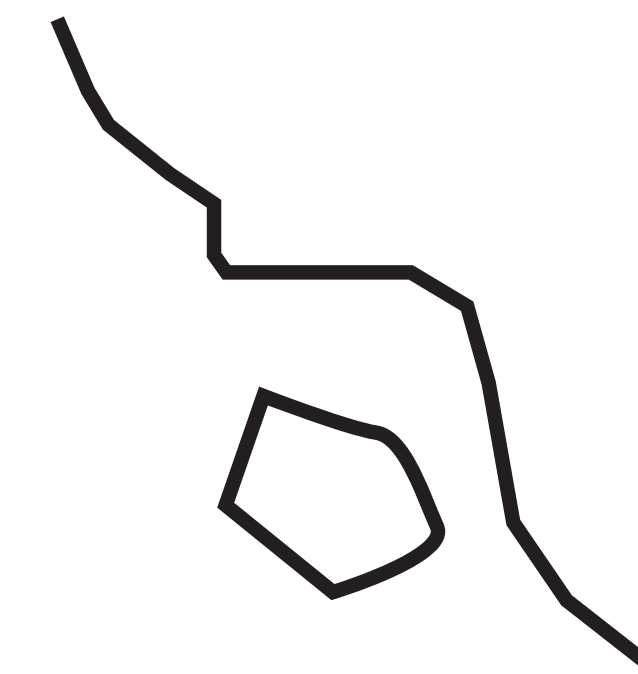
Landscape Placemaking





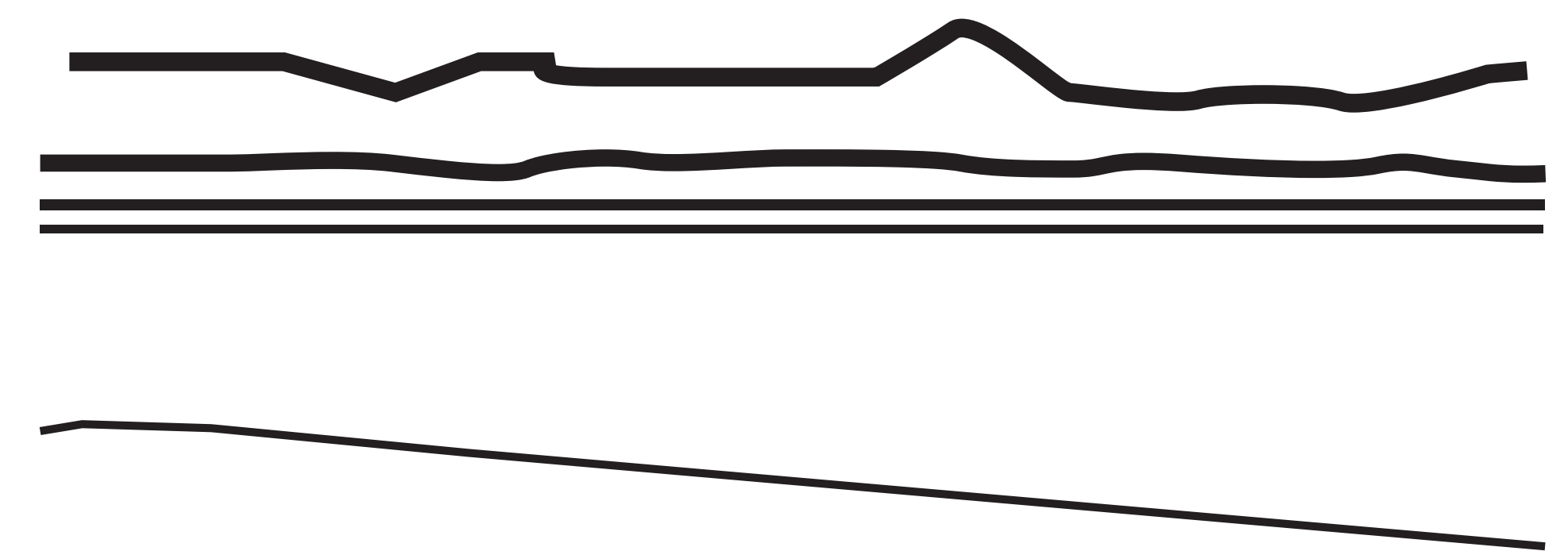
HEART OF SCHOOL

Symbolises reconciliation between Aboriginal and European



DESIGN ELEMENT

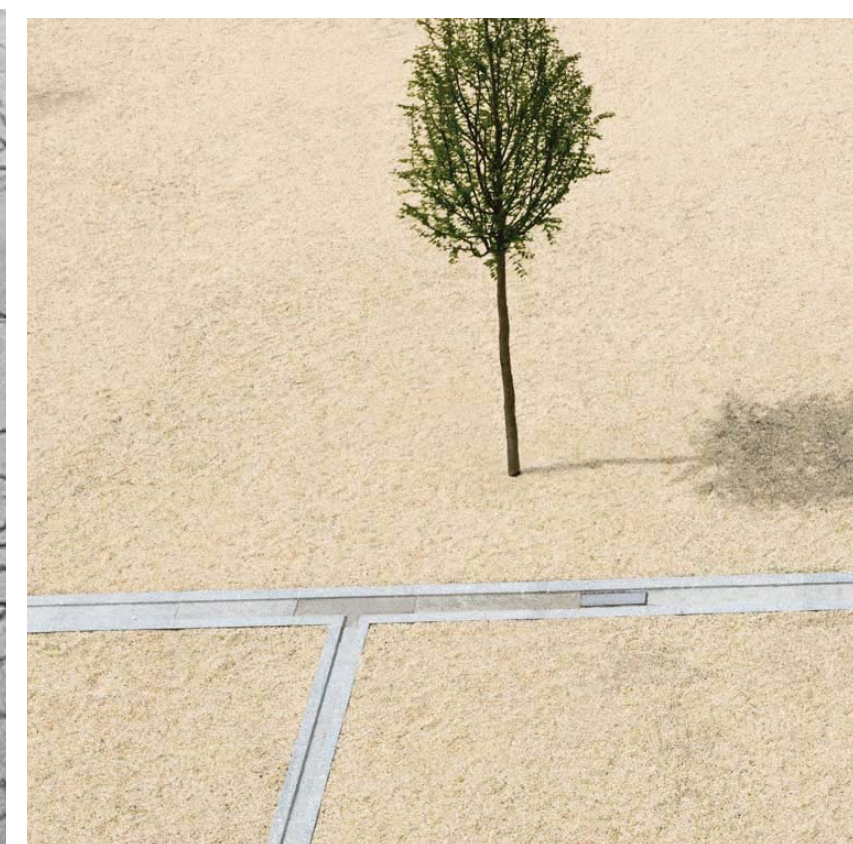
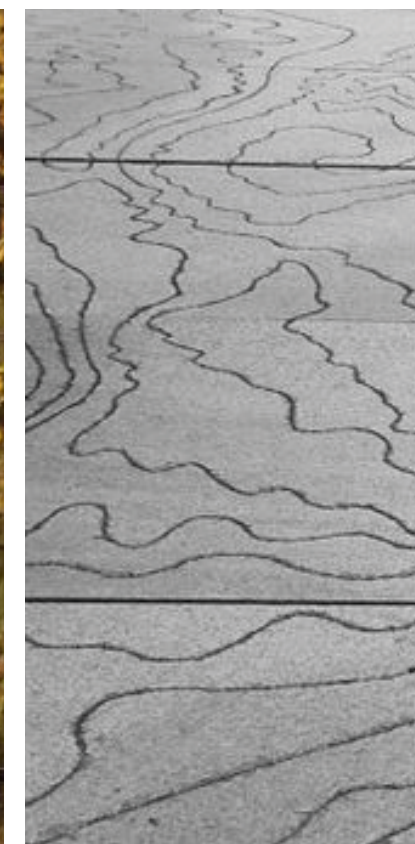
Celebrating The Connection Of People And Place



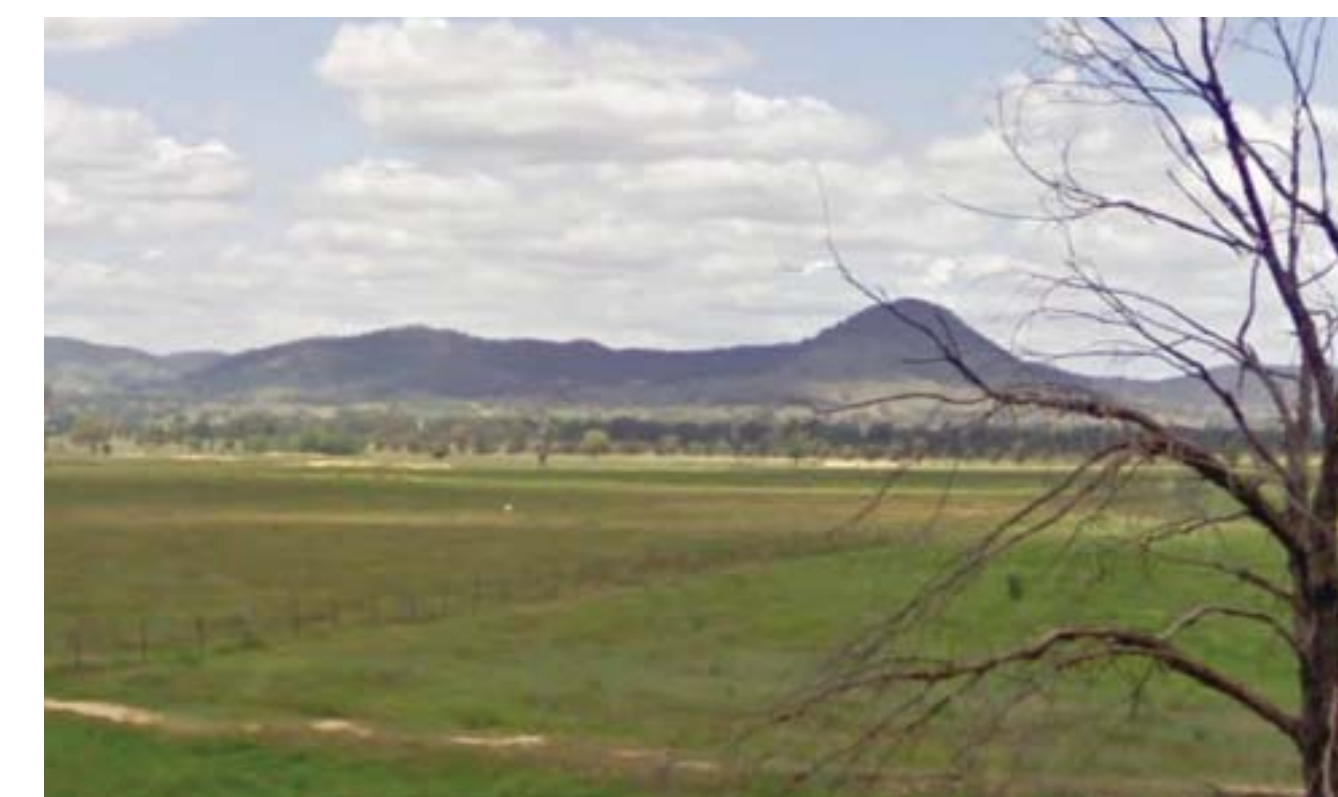
The design approach emphasizes the importance of place making, by responding to existing character and culture.

Design Narrative





Integrated nature/ history



Active/gathering/playing spaces

Assembly Space- generous seating

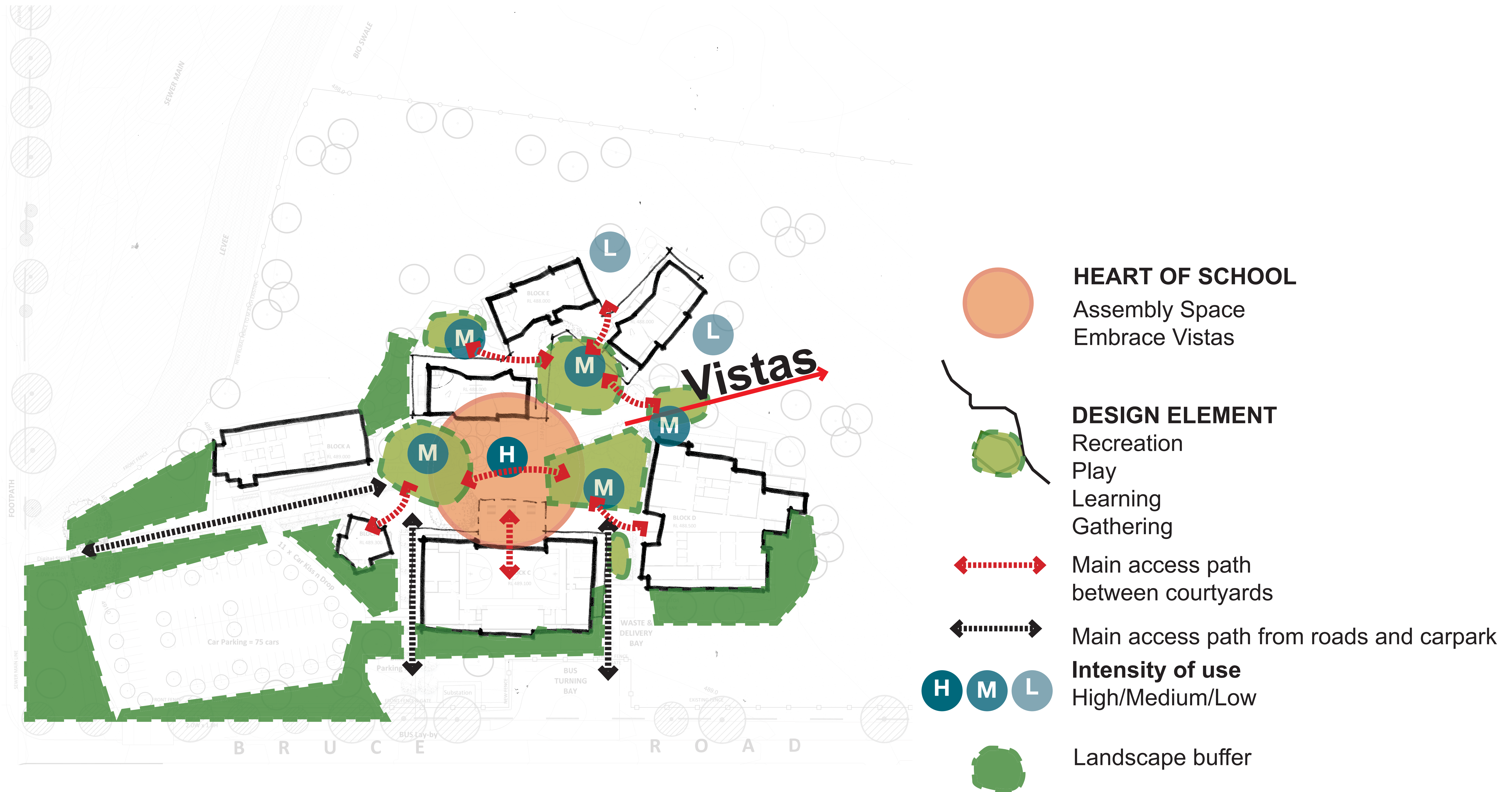
Framing mountains views



Colour palette

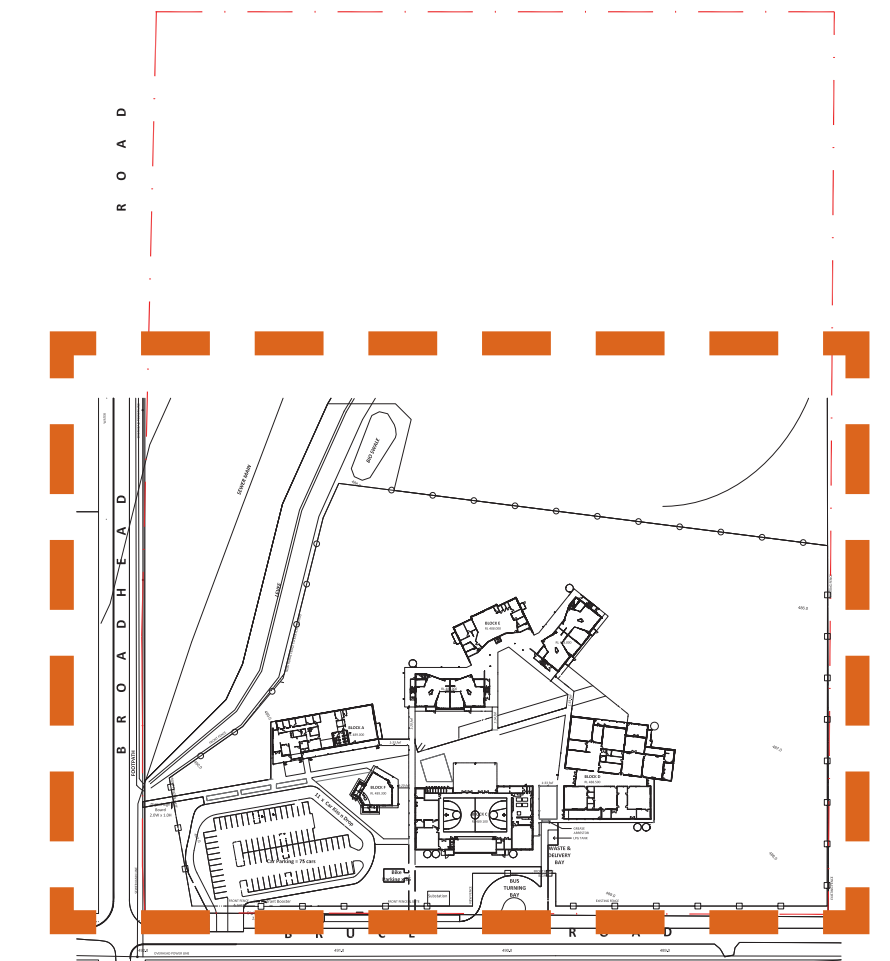
Design Precedents





Design Function and Approach





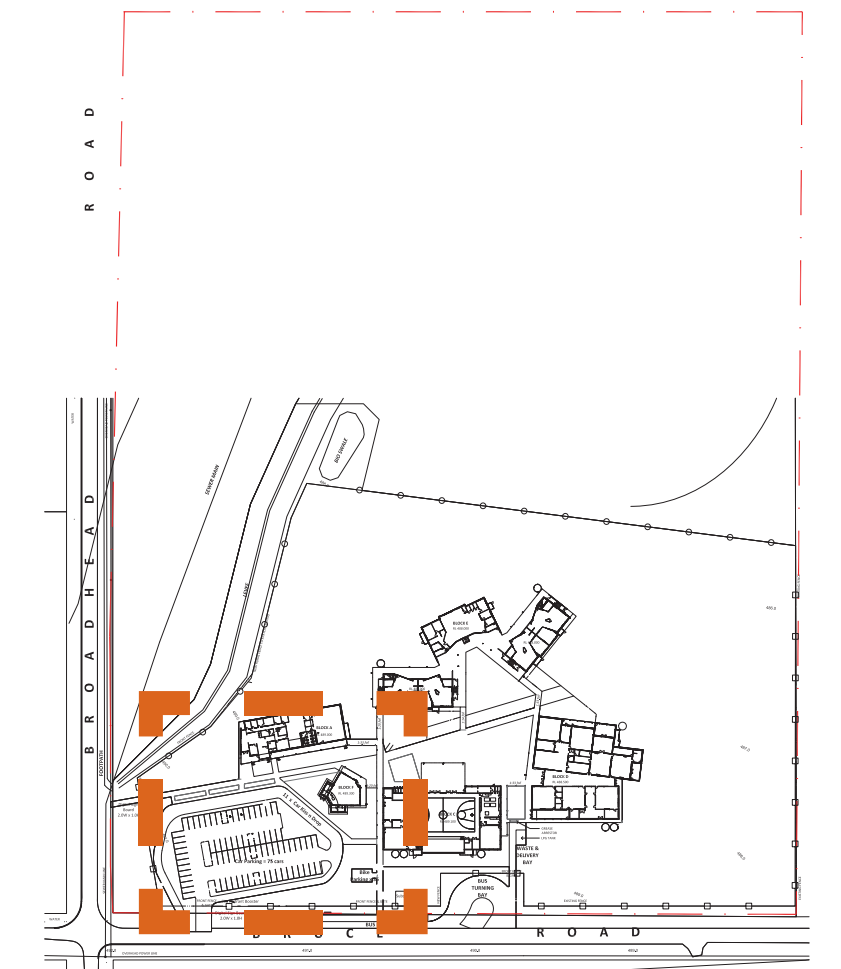
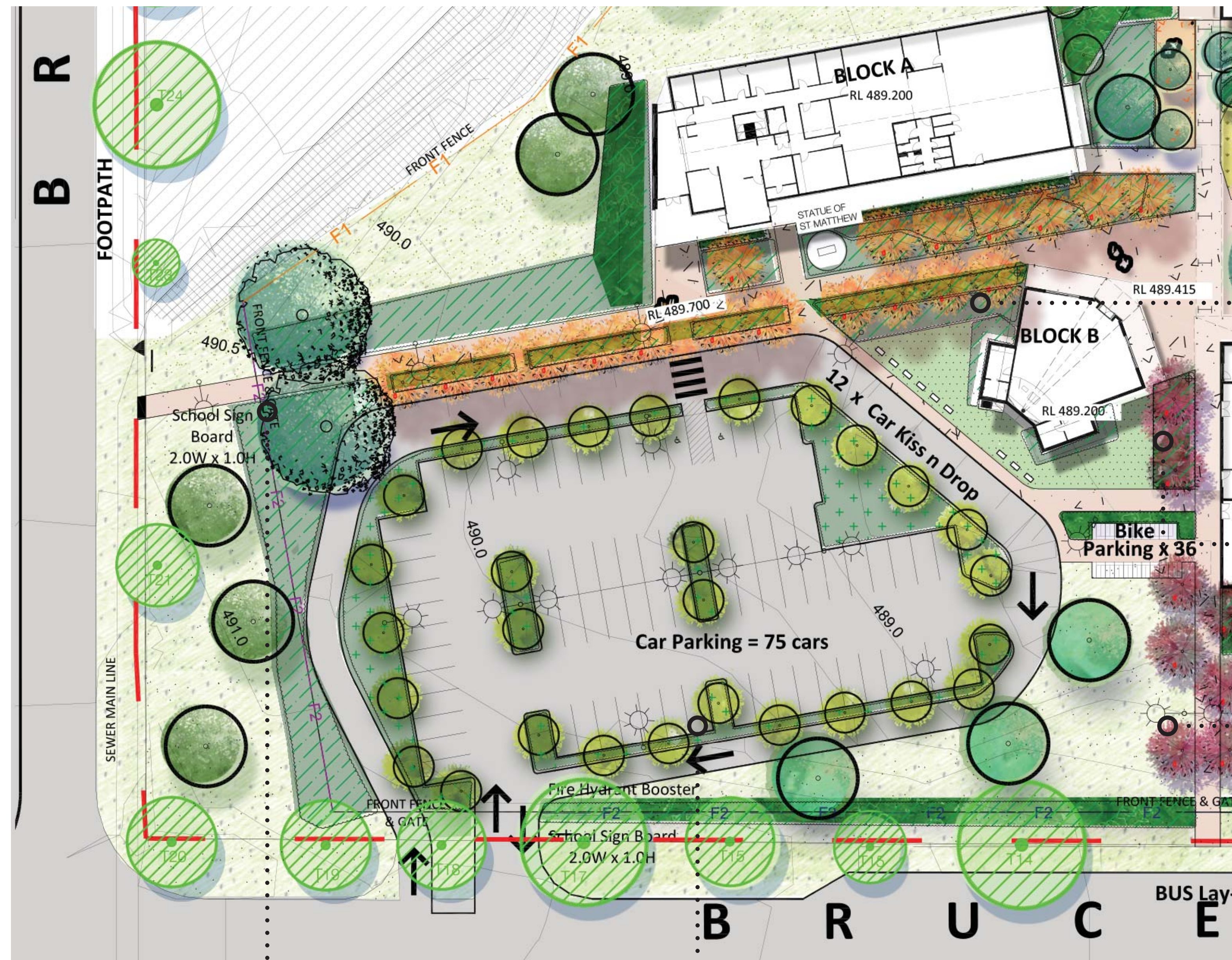
Key plan

DESIGN NOTES

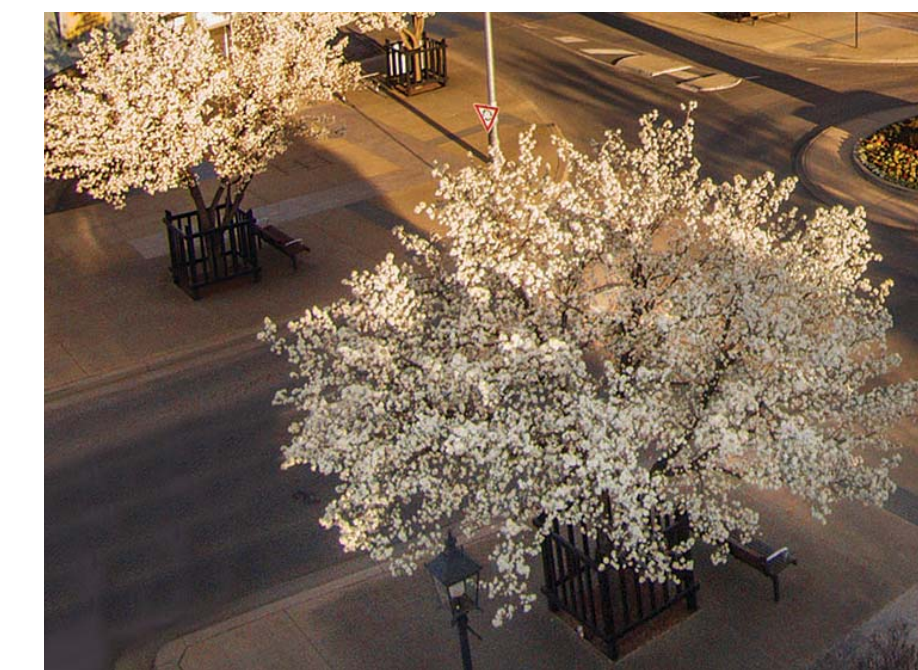
- 1 School entry with feature planting/signage opportunity
- 2 Tree planting to carpark
WSUD required Civil input
- 3 Parking with kiss and drop off area
- 4 Concrete paving throughout school
- 5 Assembly space/ large open space with seating and feature tree to school heart
- 6 Framing mountain Frome views from school heart
- 7 Outdoor gallery (student creative works display)
- 8 Feature evergreen trees to block E communal space
- 9 Outdoor seating to food hub
- 10 Yarning Circle (Outdoor learning area) with seating blocks and endemic tree plantings
- 11 Passive area/ outdoor classrooms
- 12 Free play open grass area
- 13 Statue of St Matthew

Landscape concept plan





Key plan



Cultural Planting as connector



Bycycle parking



Feature planting and signage



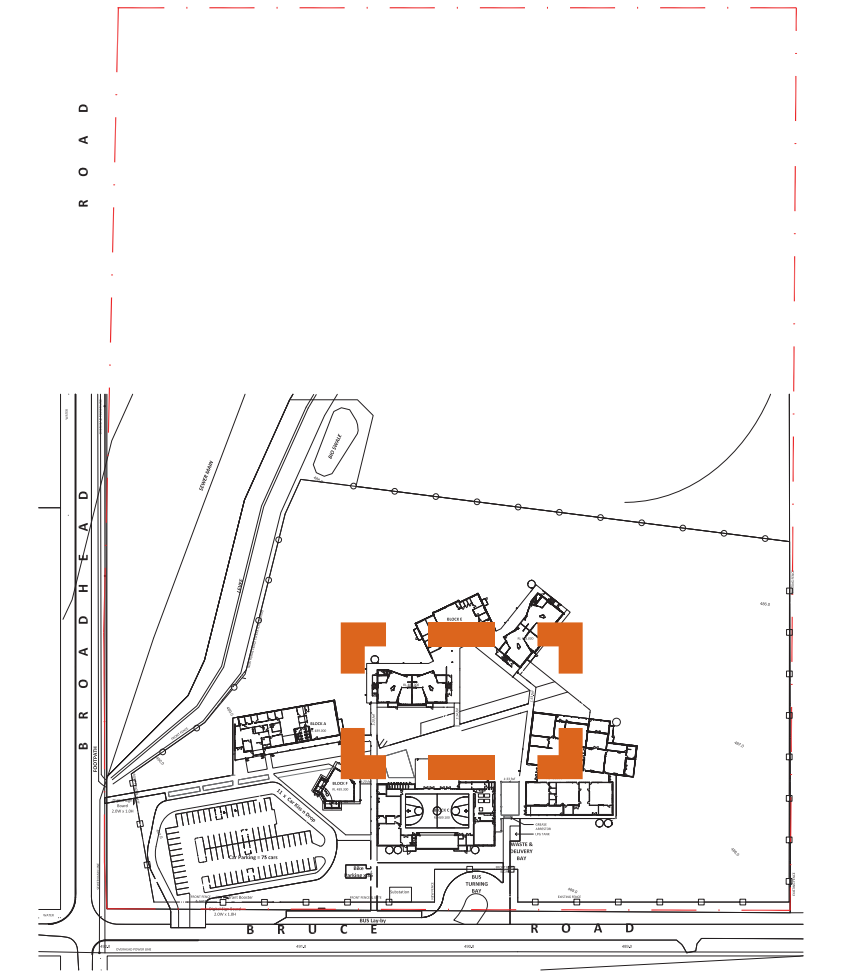
Landscape island to carpark

School entry character





View framing to surrounds



Key plan



Outdoor gallery displays student's works



Seating nook/outdoor classroom



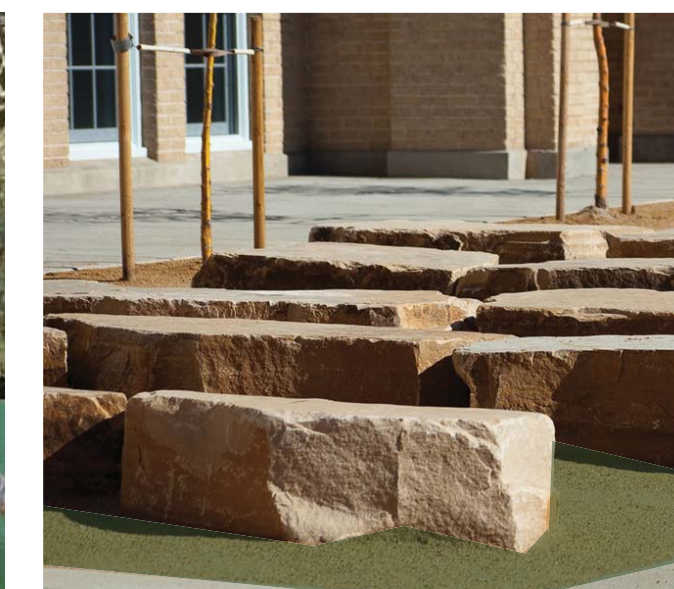
Planting character at Ceremonial area



Native grasses surrounding
Ceremonial area



Generous gathering space



Locally quarried rock seats

Outdoor Student Assembly Area and COLA





Mountains view- Illustrative Perspective

Look and feel



Yarning Circle (Outdoor learning area)- Illustrative Perspective

Look and feel

Trees



Eucalyptus mannifera



Betula pendula 'tristis'



Eucalyptus leucoxylon



Fraxinus oxycarpa 'Raywoodii'



Prunus Nigra



Pyrus calleryana 'Aristocrat'

Shurbs



Escallonia macrantha



Callistemon endeavour



Rhamphiolepis 'Oriental Pearl'



Leucophyta brownii



Persoonia pinifolia



Prostanthera phyllifolia



Escallonia Pink Pixie



Hydrangea quercifolia



Lonicera nitida 'Aurea'



Photinia 'Red Robin'



Pinus mugo 'Pumilio'

Groundcovers



Dietes Grandiflora



Poa labillardieri 'Eskdale'



Hardenbergia violacea
Meema



Lomandra confertifolia
'Little pal'



Camellia Marge Miller



Nepeta racemosa



Grevillea juniperina



Myoporum parvifolium

ID	BOTANICAL NAME	COMMON NAME	HEIGHT (m)	POT SIZE
TREES				
Be-pe	Betula pendula 'Nigra'	Tropical Birch	10m	100L
Be-tr	Betula pendula 'tristis'	Weeping Birch	12m	400L
Co-fi	Corymbia ficifolia	Flowering Gum	10m	200L
Eu-de	Eucalyptus dealbata	Red Gum	20m	200L
Eu-le	Eucalyptus leucoxylon	Yellow Gum	12m	400L
Eu-ma	Eucalyptus mannifera	Little spotty	20m	200L
Eu-si	Eucalyptus sideroxylon	Red ironbark	15m	200L
Fr-ox	Fraxinus oxycarpa 'Raywoodii'	Claret Ash	12m	400L
La-in	Lagerstroemia 'indica'	Crepe Myrtle	8m	200L
La-tu	Lagerstroemia 'Tuscarora'	Jacaranda	10m	200L
Ma-gr	Magnolia grandiflora	Bull Bay Magnolia	8m	200L
Py-us	Pyrus ussuriensis	Manchurian Pear	8m	200L
SHRUBS				
Ca-en	Callistemon endeavour	Red Bottlebrush	1.2m	200mm
Ar-fr	Argyranthemum frutescens	Marguerite Daisy	0.9m	200mm
Ca-ja	Camellia japonica	Japanese Camellia	3m	45L
Ca-sa	Camellia sasanqua	Camellia	3m	45L
Co-du	Correa 'Dusky bells'	Native Fuchsia	1m	300mm
Di-an	Dicksonia antarctica	Soft Tree Fern	4.5m	45L
Es-ma	Escallonia macrantha	Escallonia	3.5m	45L
Es-pi	Escallonia 'Pink pixie'	Pink pixie escallonia	0.5m	300mm
He-pe	Helichrysum petiolare	Licorice Plant	0.6	100mm
La-an	Lavandula angustifolia	English Lavender	0.9m	200mm
La-no	Laurus nobilis	Bay Tree	7m	300mm
Ph-re	Photinia 'Red Robin'	Christmas Berry	2.5m	100mm
Pi-mu	Pinus mugo 'Pumilio'	Pumilio Pine	0.3m	140mm
Pi-sh	Pittosporum shorty	Shorty Pittosporum	1.2m	300mm
Ro-of	Rosemarinus officinalis	Rosemary	1.8m	300mm
Sp-ca	Spirea cantoniensis	May Bush	2m	300mm
Th-or	Thuja orientalis	Golden Biot	2m	300mm
GROUNDCOVERS				
An-hy	Anemone x hybrida	Japanese Anemone	1.3m	300mm
Ar-fr	Argyranthemum frutescens	Marguerite Daisy	0.5m	300mm
Ca-ma	Camellia Marge Miller	Marge Miller	0.3m	125mm
Di-ar	Dichondra argentea 'Silver Falls'	Silver nickel vine	300mm	150mm
Di-gr	Dietes grandiflora	Wild Iris	120mm	150mm
Ga-ri	Gazania rigens	Treasure Flower	300mm	200mm
Gr-ju	Grevillea juniperina	Grevillea	0.5m	200mm
Ju-gl	Juniperus glauca	Blue Juniper	1.8m	300mm
Ju-ho	Juniperus horizontalis	Creeping Juniper	0.15m	100mm
La-de	Lavandula dentata	French Lavender	1m	300mm
Lo-lo	Lomandra longifolia	Mat rush	1200mm	300mm
My-pa	Myoporum parvifolium	Creeping Boobialla	100mm	140mm
Ne-ra	Nepeta racemosa	Catmint	600mm	150mm
Vi-mi	Vinca minor	Vinca	0.15m	100mm
Ha-vi	Hardenbergia violacea Meema	Purple Coral Pea	0.5m	150mm
GRASS				
Is-no	Isolepis nodosa	Knobby Club Rush	0.15m	150mm
Ju-us	Juncus usitatus	Mat Rush	0.3m	150mm
Ju-kr	Juncus kraussii	Sea Rush	0.6m	150mm
Po-es	Poa labillardieri 'Eskdale'	Blue Tussock Grass	0.5m	150mm

Planting Character