

Griffith Base Hospital Redevelopment  
**Landscape SSDA Report** | 130565-SI-LS-RPT-B36-001  
30th March 2021



# Landscape Masterplan



- 01 New building forecourt & aboriginal courtyard
- 02 Central Courtyard
- 03 Forecourt Access Ramp
- 04 Lower Ground Entry
- 05 Car Park
- 06 Animoo Ave Screening
- 07 Through Site Link Plaza
- 08 Staff Garden

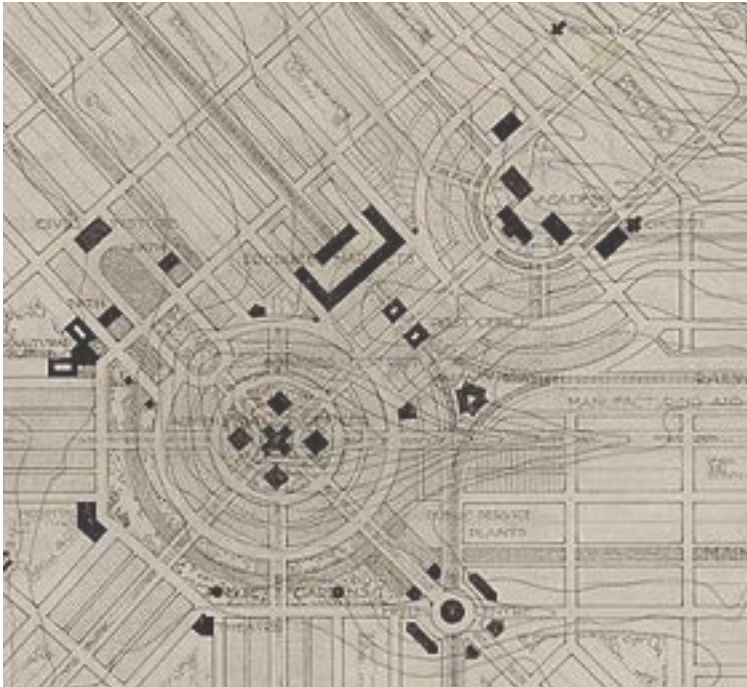
Not to Scale



Landscape Principles



Protect and Celebrate existing parkland setting



Reinforce Burley Griffin town planning legacy



Create spaces for people



Encourage Healing / wellness



# Ground Floor Courtyards



Northern landscaping  
and renal outlook

Central Courtyard

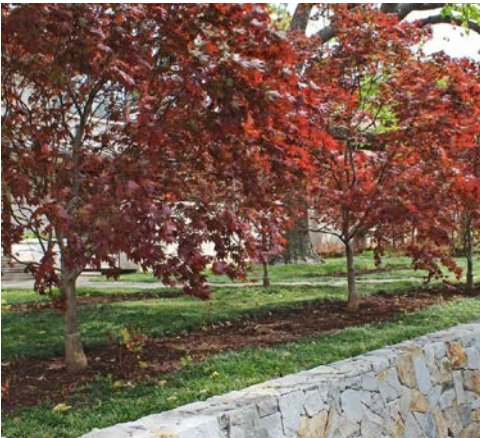
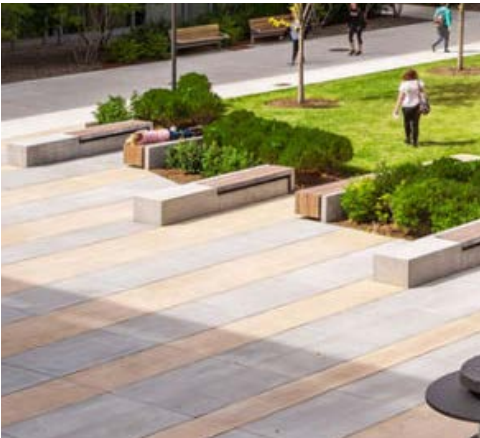
Cultural courtyard

Forecourt



# New Building Forecourt and Cultural Courtyard

The building forecourt provides the main, central community facing space and entry to the hospital. A canopy covered walkway provides a connection from the carpark to the building entry. Bench seating will flank the pathway. Massed planting will soften the edges of the space. The cultural courtyard to the eastern edge of the forecourt provides the indigenous community a space with a variety of seating for gatherings at a range of scales. A variety of natural elements such as rocks and water features locally appropriate will also be integrated. A strong buffer of planting for privacy and fencing will secure of the space.



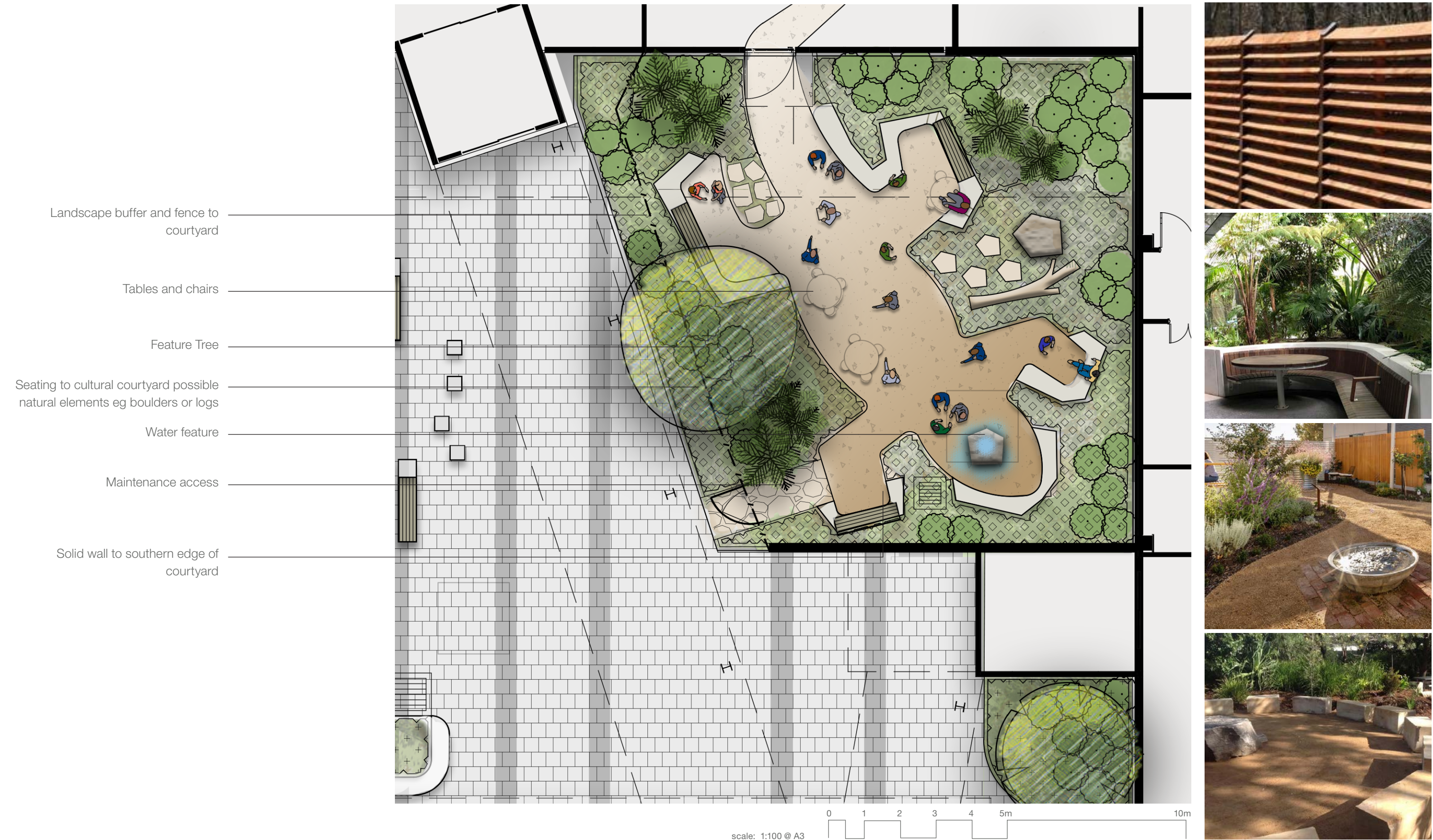


Through Site Link Plaza



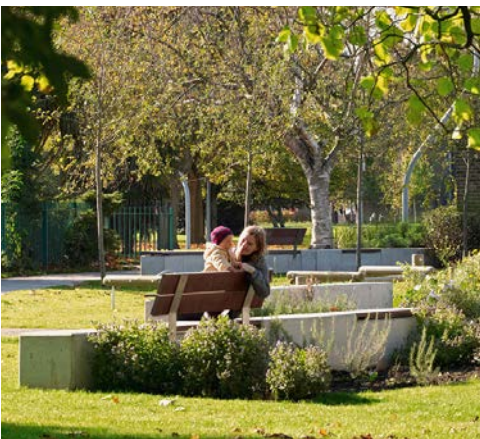
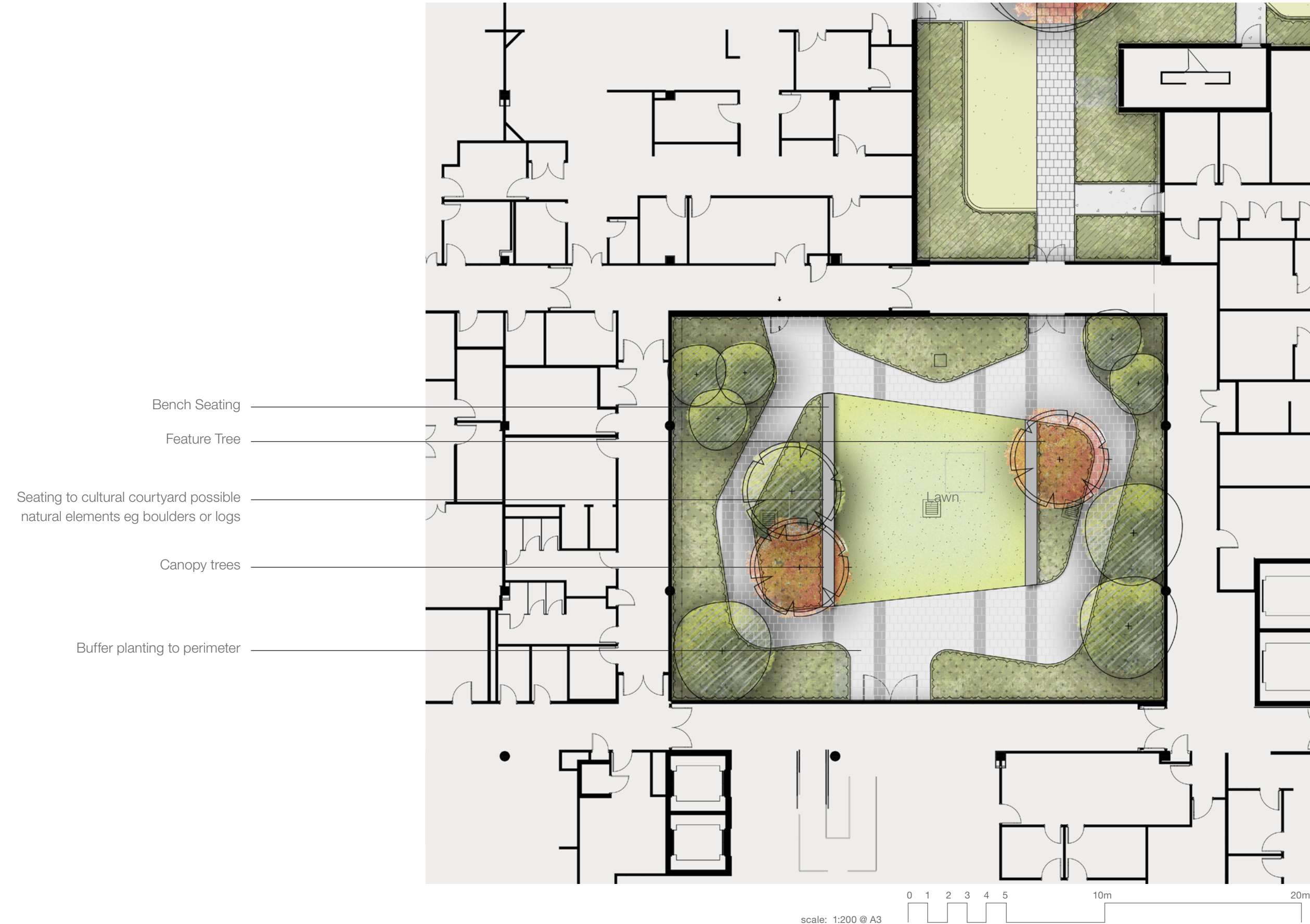


# Aboriginal Courtyard





# Central Courtyard





Lower Ground Entry

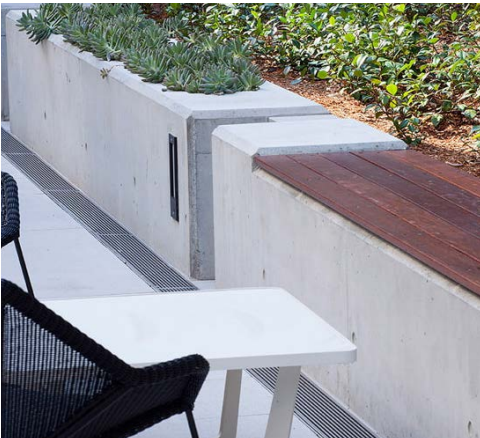




# Staff Courtyard

The staff courtyard on the lower ground level will provide areas for staff to take their breaks and hold gatherings. A variety of seating will be provided within the space to allow for different groups of users. The Spaces will be secured by a fence to the perimeter and buffer planting will provide privacy from the adjacent pathways.

- Executive seating area
- Staff seating / dining
- Building Access
- Planting for privacy and shade
- Fence to staff courtyard
- Bike parking





# Forecourt Access Ramp

The forecourt access ramp provides external access via ramp or stair from the ambulatory care hub and lower ground up to the ground floor forecourt entry and carpark.

Creating a series of terraces between the ramps and stairs seating will create a place for rest along the walk with a row of trees along the pathway will provide shade.

- Access to staff courtyards and lower ground entry
- Seating along ramp and stairs
- Massed grass and groundcover planting
- Ramp and stair access to entry forecourt and carparking
- Seating areas and turn around space





# Car Park

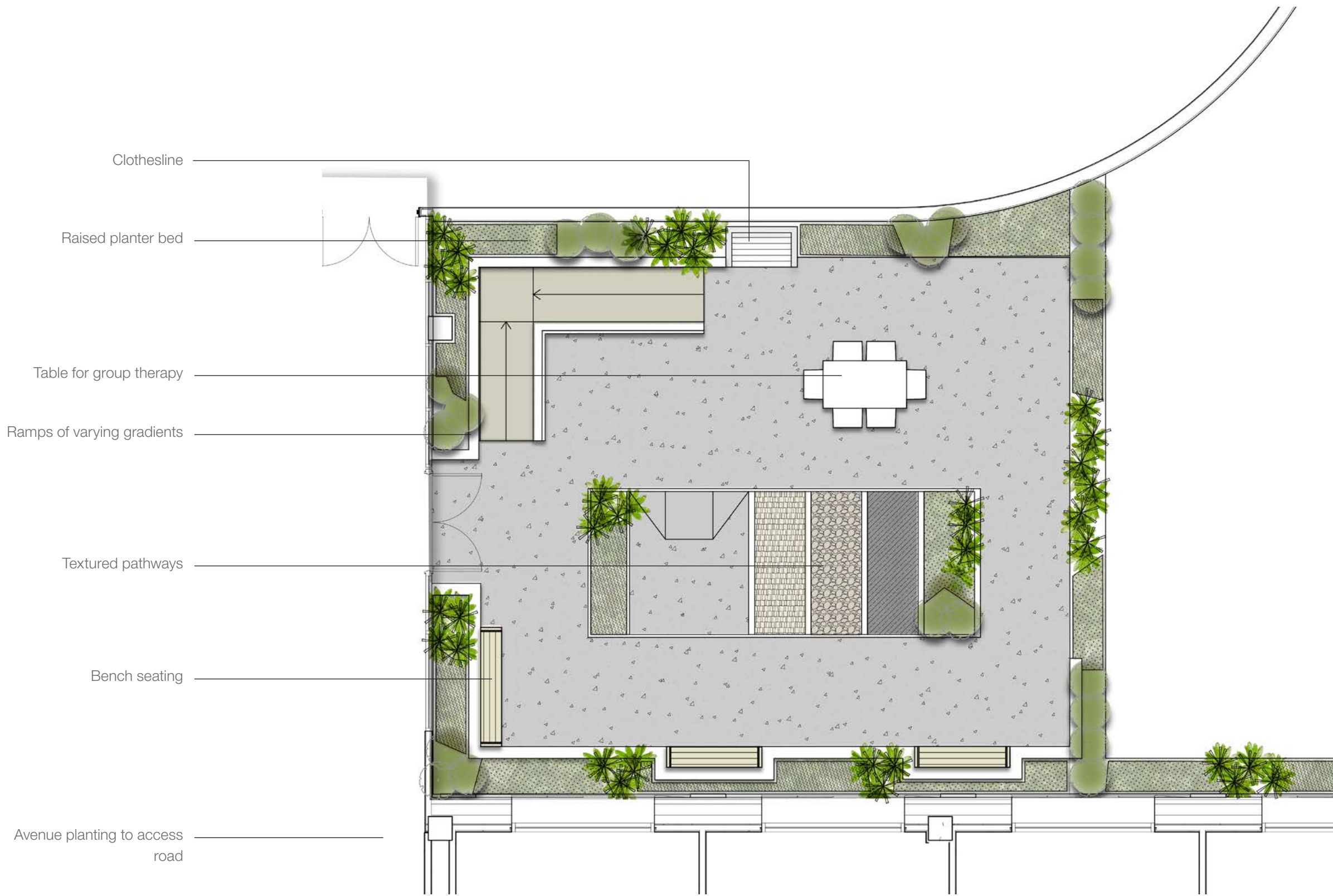
The main carpark landscaping will include softscape within carparking islands consisting of clear canopy shade trees and low groundcovers to maintain vehicle sightlines. A central pedestrian spine will assist in providing a safe route through the carpark to and from the hospital building,

- Forecourt access
- Pedestrian spine
- Shelter canopies with seating to the central spine
- Canopy tree planting in carpark
- Possible integration of WSUD to carpark planting
- Avenue planting to access road
- Round site circulation path





L2 Rehab Terrace





Site Wide Circulation & Amenity

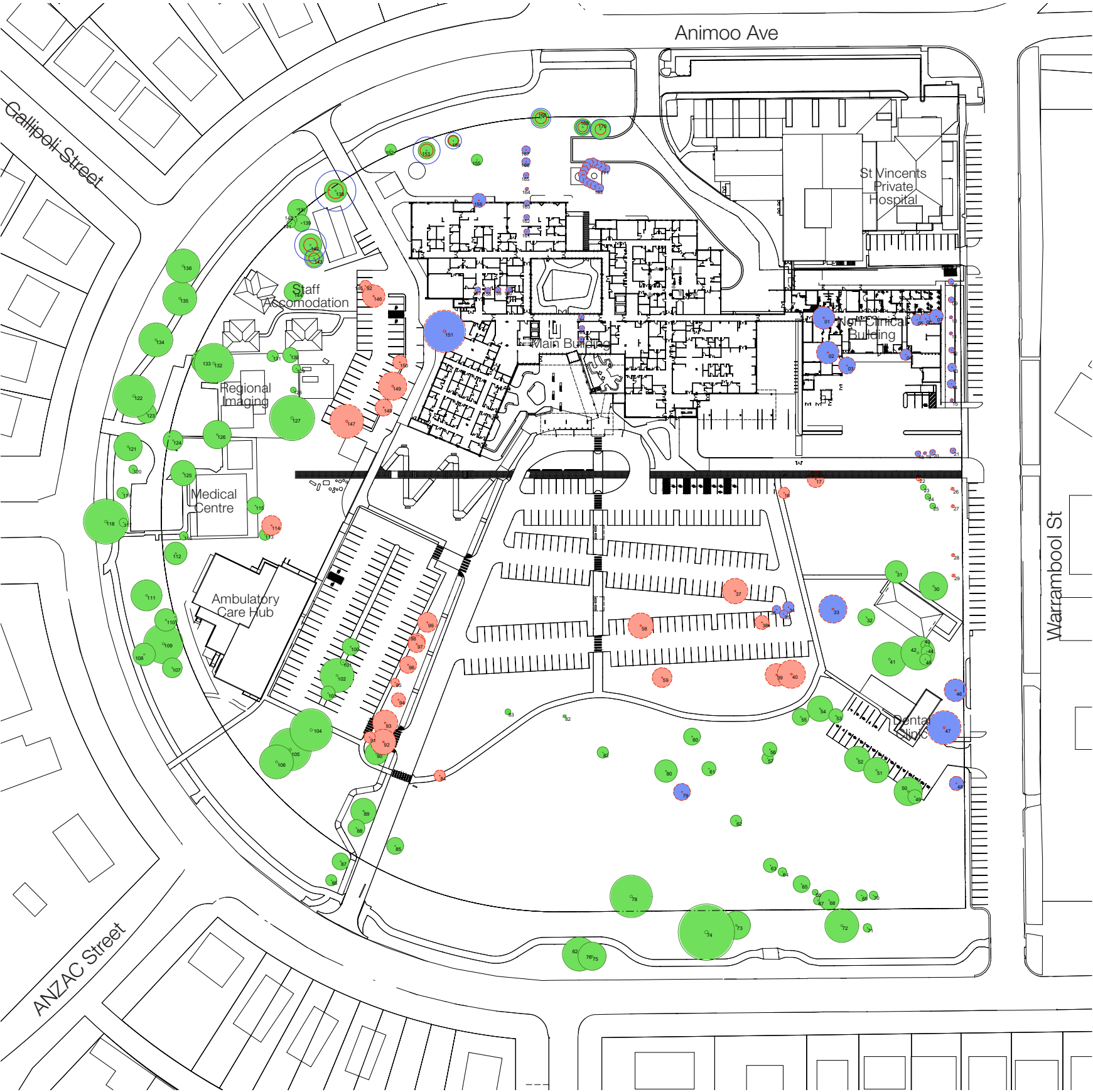


- Cross Site Links
- Circuit
- Seating
- Open lawn
- Bike Parking  
Number of parks provided




Not to Scale



# Existing Trees



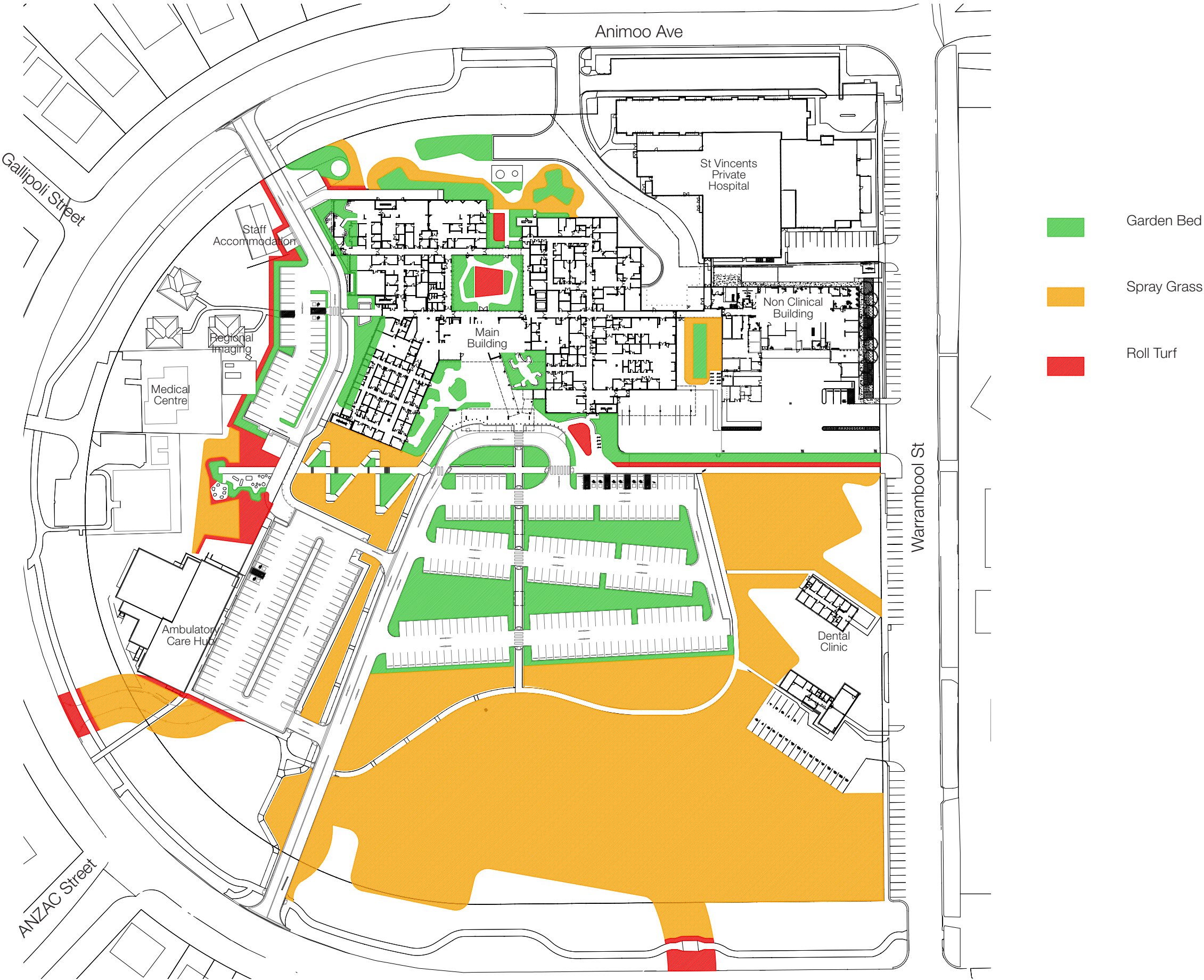
Existing trees are proposed to be retained wherever possible. Final tree retention plan subject to detailed arboricultural assessment and architectural plans in design development.  
Existing trees to be retained to be pruned as necessary to ensure tree health and ongoing safety.

-  Existing tree to be retained
-  Existing tree to be removed (SSD)
-  Existing tree approved for removal under a separate planning approval process

Not to Scale



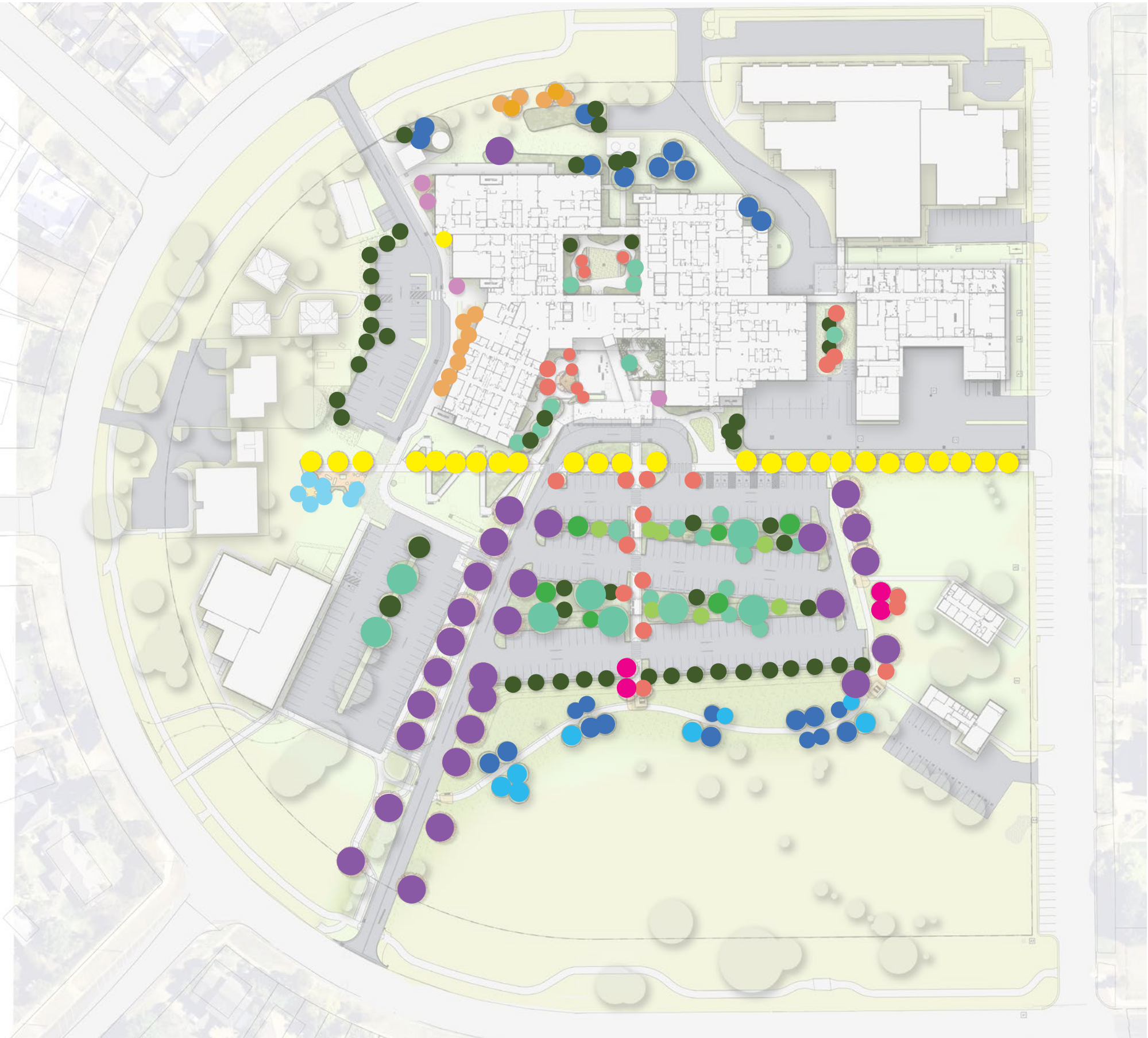
# Landscape Scope Diagram



Not to Scale



# Proposed Tree Planting



Proposed tree species have been selected to reinforce the parkland setting of the hospital. A mixture of native and deciduous species are proposed. Deciduous species will provide seasonal interest and solar access in winter. Native evergreen trees have been proposed particularly to carpark areas to reduce heat island effect.

### Exotic Deciduous Trees

Aj	<i>Albizia julibrissin</i>	Silk Tree
Ap	<i>Acer palmatum</i>	Japanese Maple
GtS	<i>Gleditia triacanthos</i> 'Shademaster'	Honey Lotus
LiN	<i>Lagerstroemia indica</i> 'Natchez'	Crepe Myrtle
Lt	<i>Liriodendron tulipiferum</i>	Tulip Tree
Ns	<i>Nyssa sylvatica</i>	Tupelo
PC	<i>Pyrus</i> 'Chanticleer'	Chanticleer Pear
PCa	<i>Pyrus</i> 'Capital'	Capital Pear
Qp	<i>Quercus palustris</i>	Pin Oak
Up	<i>Ulmus parvifolia</i>	Chinese Elm

### Native Trees

Cc	<i>Casuarina cunnighamiana</i>	River She-Oak
Bi	<i>Banksia integrifolia</i>	Coast Banksia
Cv	<i>Callistemon viminalis</i>	Bottlebrush
EsP	<i>Eucalyptus sideroxylon</i> 'Pink'	Pink Flowered Iron Bark
MI	<i>Melaleuca linarifolia</i>	Snow in Summer
Ms	<i>Melaleuca stypheloides</i>	Prickly Paperbark
TL	<i>Tristaniopsis laurina</i> 'Lucious'	Watergum
Bp	<i>Brachychiton populneus</i>	Kurrajong Tree

### Canopy Trees

Cc	<i>Casuarina cunnighamiana</i>	River She-Oak
Eci	<i>Eucalyptus cinerea</i>	Argyle Apple
EP	<i>Eucalyptus sideroxylon</i> 'Pink'	Pink Flowered Iron Bark



Planting Palette

Proposed planting shall be a mixture of native and exotic species primarily chosen to be low maintenance and suitable for the local growing condition all species selected shall be low allergenic and non toxic.

A consistent reliable frame of evergreen shrubs and hedges will provide a backdrop for external space. Within the smaller scale patient and staff areas species will be chosen for seasonal and textural interest providing a connection to nature for users. In broader external areas such as the entry driveway and frontages planting will be massed groups of shrubs, grasses and groundcovers, the height of planting in these spaces will consider CPTED principles to not create hiding spaces and obstructions in sightlines for pedestrians and vehicles.

Proposed trees will be a combination of both evergreen and deciduous species, with deciduous positioned to allow for solar access in the winter and shade in the summer.

All landscaped areas are to be provided with and automatic drip irrigation system to ensure viability and the ongoing health of the landscape allowing for seasonal variation, extreme weather events and less reliance on the manual maintenance regime.

Indicative Planting Schedule - Level 2

Botanical Name	Common Name	Mature Size	Indicative Quantity			
				Lavendula x intermedia	Evergreen	10 x 10
				Plumbago 'Cape White'	Plumbago	3 x 2
				Photinia glabra 'Rubens'	Dwarf Photinia	2 x 2
				Phormium tenax	New Zealand Flax	1.5 x 1.5
				Phormium 'Bronze Baby'	Bronze Flax	1 x 1
Trees			3	Rosmarinus officianalis	Rosemary	1 x 1
Albizia julibrissin	Silk Tree	5 x 4		Teucrium fruticans	Bush Germander	1 x 1
Acer palmatum	Japanese Maple	4 x 4		Viburnum tinus	Laurustinus	3 x 2
Lagerstroemia indica 'Natchez'	Crepe Myrtle	6 x 4		Westringia 'Blue Gem'	Native Rosemary	1 x 1
				Westringia brevifolia 'Lilac and Lace'	Varigated Coastal Rosemary	1 x 1
Shrubs						
Acacia 'Limelight'	Limelight acacia	1 x 1	61	Grasses, Groundcovers and Climbers		
Correa alba	Native Fuchsia	1 x 1		Anigozanthus cultivars	Kangaroo Paw	.4 x .6
Leptospermum 'Pink Cascade'	Pink Tea Tree	.5 x 1		Anemone x hybrida	Japanese Wind Flower	.4 x .4
Lavendula x intermedia	Lavender	.6 x .6		Ajuga reptans 'Catlins Giant'	Bugle Weed	.2 x 1
Phormium 'Bronze Baby'	Bronze Flax	1 x 1		Callistemon 'Little John'	Dwarf Bottlebrush	.5 x .5
Rosmarinus officianalis	Rosemary	1 x 1		Carpobrotus glaucescens	Pigface	.1 x 1
Westringia 'Blue Gem'	Native Rosemary	1 x 1		Erigeron karvinskianus	Seaside	.3 x .3
Grasses, Groundcovers and Climbers				Dietes iridoides	Wild Iris	.6 x .5
Anigozanthus cultivars	Kangaroo Paw	.4 x .6	46	Gazania tomentosa	Silver Gazania	.2 x 1
Ajuga reptans 'Catlins Giant'	Bugle Weed	.2 x 1		Juniperus horizontalis 'Douglasii'	Juniper Groundcover	.1 x 1
Carpobrotus glaucescens	Pigface	.1 x 1		Liriope 'Evergreen Giant'	Giant Mondo	.4 x .4
Dietes iridoides	Wild Iris	.6 x .5		Lampanthus cvs.	Trailing Ice Plant	.4 x .8
Gazania tomentosa	Silver Gazania	.2 x 1		Lomandra longifolia	Mat Rush	.8 x .8
Liriope 'Evergreen Giant'	Giant Mondo	.4 x .4		Lomandra 'Tanika'	Dwarf Lomandra	.5 x .5
Lomandra 'Tanika'	Dwarf Lomandra	.5 x .5		Trachelospermum jasminoides	Star Jasmine	.3 x 1
Trachelospermum jasminoides	Star Jasmine	.3 x 1		Themeda 'Blue Mingo'	Blue Kangaroo Grass	.4 x .4
Viola hederacea	Native Violet	.1 x .5		Viola hederacea	Native Violet	.1 x .5

Indicative Planting Schedule - Ground

Botanical Name	Common Name	Mature Size	Indicative Quantity
Trees			
<i>Albizia julibrissin</i>	Silk Tree	5 x 4	191
<i>Acer palmatum</i>	Japanese Maple	4 x 4	
<i>Callistemon viminalis</i>	Bottlebrush	5 x 4	
<i>Eucalyptus sideroxylon</i> "Pink"	Pink Flowered Iron Bark	15 x 10	
<i>Gleditia triacanthos</i> 'Shadmaster'	Honey Locust	12 x 10	
<i>Lagerstroemia indica</i> 'Natchez'	Crepe Myrtle	6 x 4	
<i>Liriodendron tulipiferum</i>	Tulip Tree	20 x 8	
<i>Melaleuca styphelioides</i>	Prickly Paperbark	8 x 6	
<i>Nyssa sylvatica</i>	Tupelo	11 x 6	
<i>Tristaniopsis laurina</i> 'Lucsious'	Watergum	12 x 6	
<i>Pyrus</i> 'Chanticleer'	Chanticleer Pear	11 x 6	
<i>Pyrus</i> 'Capital'	Capital Pear	11 x 3	
<i>Ulmus parvifolia</i>	Chinese Elm	13 x 10	
Shrubs			
<i>Acanthus mollis</i>	Oyster plant	1.5 x 1.5	6098
<i>Acacia</i> 'Limelight'	Limelight acacia	1 x 1	
<i>Azalea</i> sp.	Azalea	1.2 x 1	
<i>Choisya ternata</i>	Mexican Orange Blossom	1 x 2	
<i>Correa alba</i>	Native Fuchsia	1 x 1	
<i>Coleonema compactum</i>	Diosma Dwarf Pink	1 x 1	
<i>Coleonema pulchellum</i> 'Aurea'	Golden Diosma	1 x 1	
<i>Daphne odora</i>	Daphne	1 x 1.5	
<i>Dodonaea viscosa</i> 'Purpurea'	Purple Hop Bush	1 x 3	
<i>Echium candicans</i>	Pride of Madeira	1.5 x 2.5	
<i>Hebe</i> 'Blue Gem'	Blue Gem Hebe	1 x 1	
<i>Leptospermum</i> 'Pink Cascade'	Pink Tea Tree	.5 x 1	
<i>Lavendula x intermedia</i>	Lavender	.6 x .6	
<i>Plumbago</i> 'Cape White'	Plumbago	3 x 2	
<i>Photinia glabra</i> 'Rubens'	Dwarf Photinia	2 x 2	
<i>Phormium tenax</i>	New Zealand Flax	1.5 x 1.5	
<i>Phormium</i> 'Bronze Baby'	Bronze Flax	1 x 1	
<i>Rosmarinus officianalis</i>	Rosemary	1 x 1	
<i>Teucrium fruticans</i>	Bush Germander	1 x 1	
<i>Viburnum tinus</i>	Laurustinus	3 x 2	
<i>Westringia</i> 'Blue Gem'	Native Rosemary	1 x 1	
<i>Westringia brevifolia</i> 'Lilac and Lace'	Varigated Coastal Rosemary	1 x 1	
Grasses, Groundcovers and Climbers			
<i>Anigozanthus cultivars</i>	Kangaroo Paw	.4 x .6	10617
<i>Anemone x hybrida</i>	Japanese Wind Flower	.4 x .4	
<i>Ajuga reptans</i> 'Catlins Giant'	Bugle Weed	.2 x 1	
<i>Callistemon</i> 'Little John'	Dwarf Bottlebrush	.5 x .5	
<i>Carpobrotus glaucescens</i>	Pigface	.1 x 1	
<i>Erigeron karvinskianus</i>	Seaside	.3 x .3	
<i>Dietes iridoides</i>	Wild Iris	.6 x .5	
<i>Gazania tomentosa</i>	Silver Gazania	.2 x 1	
<i>Juniperus horizontalis</i> 'Douglasii'	Juniper Groundcover	.1 x 1	
<i>Liriope</i> 'Evergreen Giant'	Giant Mondo	.4 x .4	
<i>Lampanthus cvs.</i>	Trailing Ice Plant	.4 x .8	
<i>Lomandra longifolia</i>	Mat Rush	.8 x .8	
<i>Lomandra</i> 'Tanika'	Dwarf Lomandra	.5 x .5	
<i>Trachelospermum jasminoides</i>	Star Jasmine	.3 x 1	
<i>Themeda</i> 'Blue Mingo'	Blue Kangaroo Grass	.4 x .4	
<i>Viola hederacea</i>	Native Violet	.1 x .5	



Acanthus mollis



Gleditia triacanthos ‘Shadmaster’



Eucalyptus sideroxylon ‘Pink’



Coleonema compactum



Dodonaea viscosa ‘Purpurea’



Eucalyptus sideroxylon ‘Pink’

Materials

Material selection shall be made with an emphasis on durable low maintenance finishes. Materials shall be sympathetic to architectural finishes and locally appropriate. Materials shall be selected to ensure ease of ongoing maintenance and minimise opportunity for vandalism.

Paving surfaces are to ensure even safe surfaces with appropriate slip resistance with a neutral colour palette and of glare.

Seating shall be in a variety of formats for varying groups, ages and sizes with provision of seats with back and armrests though the spaces.

