

Private Views

4.12 Camera Position 25 - Original Photograph with Proposed Building

Photograph Location : 278 Moore Park Road



Photo date - 11/04/19

Photo Lens - 24mm

Private Views

4.13 Camera Position 26 - Overview

Photograph Location : 35 Alexander Street, Paddington



Original Photograph



Original Photograph showing Alignment Points



Photomontage of Proposed Building

Key

- Surveyed Locations
- Approved Loose Fit Envelope

Photo date - 17/04/19

Photo Lens - 24mm



Private Views

4.14 Camera Position 26 - Original Photograph

Photograph Location : 35 Alexander Street, Paddington



Photo date - 17/04/19

Photo Lens - 24mm

4.15 Camera Position 26 - Original Photograph with Alignment Points

Photograph Location : 35 Alexander Street, Paddington



Photo date - 17/04/19

Photo Lens - 24mm

Private Views

4.16 Camera Position 26 - Original Photograph with Proposed Building

Photograph Location : 35 Alexander Street, Paddington



Photo date - 17/04/19

Photo Lens - 24mm

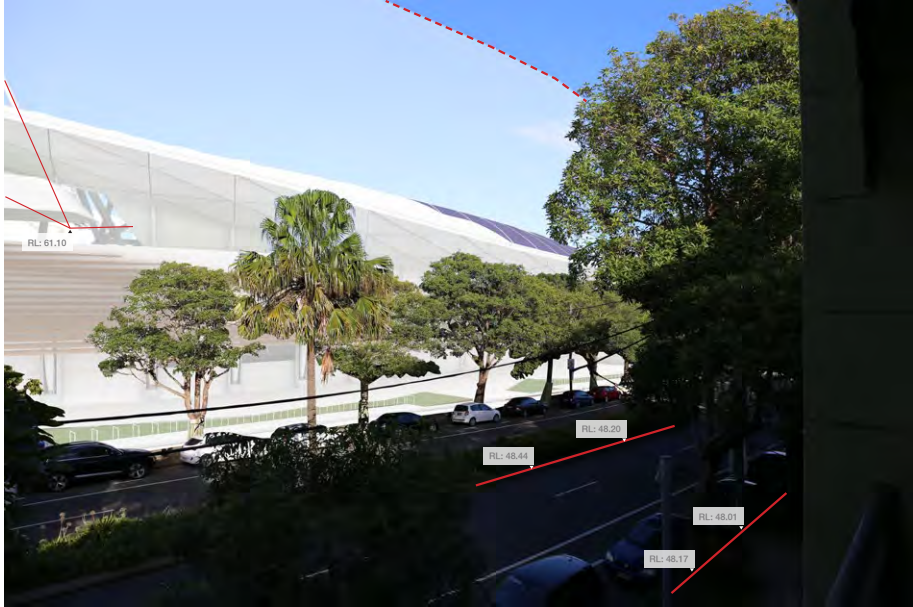
Private Views

4.17 Camera Position 27 - Overview

Photograph Location : 264 Moore Park Road, Paddington



Original Photograph



Original Photograph showing Alignment Points



Photomontage of Proposed Building

Key

- Surveyed Locations
- Approved Loose Fit Envelope

Photo date - 17/04/19

Photo Lens - 24mm



Private Views

4.18 Camera Position 27 - Original Photograph

Photograph Location : 264 Moore Park Road, Paddington



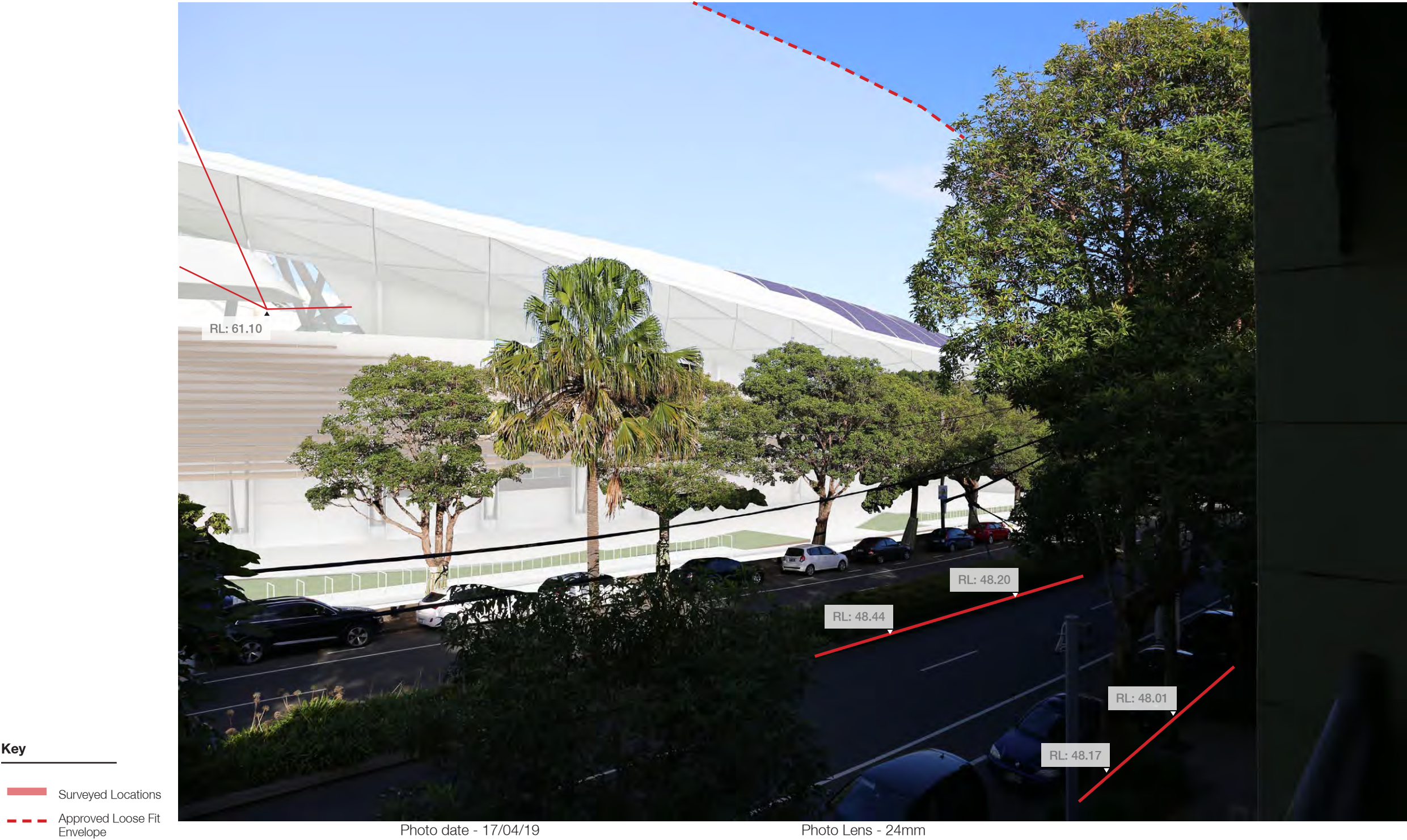
Photo date - 17/04/19

Photo Lens - 24mm

Private Views

4.19 Camera Position 27 - Photograph with Alignment Points

Photograph Location : 264 Moore Park Road, Paddington



Private Views

4.20 Camera Position 27 - Original Photograph with Proposed Building

Photograph Location : 264 Moore Park Road, Paddington



Photo date - 17/04/19

Photo Lens - 24mm

Private Views

4.21 Camera Position 28 - Overview

Photograph Location : 69/49-51 Cook Road, Centennial Park



Original Photograph



Original Photograph showing Alignment Points



Photomontage of Proposed Building

Key

- Surveyed Locations
- Approved Loose Fit Envelope

Photo date - 17/04/19

Photo Lens - 24mm



Private Views

4.22 Camera Position 28 - Original Photograph

Photograph Location : 69/49-51 Cook Road, Centennial Park



Photo date - 17/04/19

Photo Lens -

Private Views

4.23 Camera Position 28 - Original Photograph with Alignment Points

Photograph Location : 69/49-51 Cook Road, Centennial Park



Key

- Surveyed Locations
- Approved Loose Fit Envelope

Photo date - 17/04/19

Photo Lens - 24mm

Private Views

4.24 Camera Position 28 - Original Photograph with Proposed Building

Photograph Location : 69/49-51 Cook Road, Centennial Park



Photo date - 17/04/19

Photo Lens - 24mm

Private Views

4.25 Camera Position 29 - Overview

Photograph Location : 42/57-67 Cook Road, Centennial Park



Original Photograph



Original Photograph showing Alignment Points



Photomontage of Proposed Building

Key

- Surveyed Locations
- Approved Loose Fit Envelope

Photo date - 25/04/2019

Photo Lens - 24mm



Private Views

4.26 Camera Position 29 - Original Photograph

Photograph Location : 42/57-67 Cook Road, Centennial Park



Photo date - 17/04/19

Photo Lens - 24mm

Private Views

4.27 Camera Position 29 - Original Photograph with Alignment Points

Photograph Location : 42/57-67 Cook Road, Centennial Park



Key

- Surveyed Locations
- Approved Loose Fit Envelope

Photo date - 17/04/2019

Photo Lens - 24mm

4.28 Camera Position 29 - Original Photograph with Proposed Building



Photo date - 17/04/2019

Photo Lens -

Private Views

4.29 Camera Position 30 - Overview

Photograph Location : 43 Stewart Street, Paddington



Original Photograph



Original Photograph showing Alignment Points



Photo Montage of Proposed Building

Key

- Surveyed Locations
- Approved Loose Fit Envelope

Photo date - 17/04/2019

Photo Lens - 24mm



Private Views

4.30 Camera Position 30 - Original Photograph

Photograph Location : 43 Stewart Street, Paddington



Photo date - 17/04/2019

Photo Lens - 24mm

4.31 Camera Position 30 - Original Photograph with Alignment Points

Photograph Location : 43 Stewart Street, Paddington



Private Views

4.32 Camera Position 30 - Original Photograph with Proposed Building

Photograph Location : 43 Stewart Street, Paddington



Photo date - 17/04/2019

Photo Lens - 24mm

SJB Architects

sjb.com.au

We create spaces people love.
SJB is passionate about the
possibilities of architecture,
interiors, urban design
and planning.
Let's collaborate.

Level 2, 490 Crown Street
Surry Hills NSW 2010
Australia
T. 61 2 9380 9911
architects@sjb.com.au
sjb.com.au