

# SEARs Photomontage Views Prepared for SSDA : Western Sydney University, Bankstown City Campus

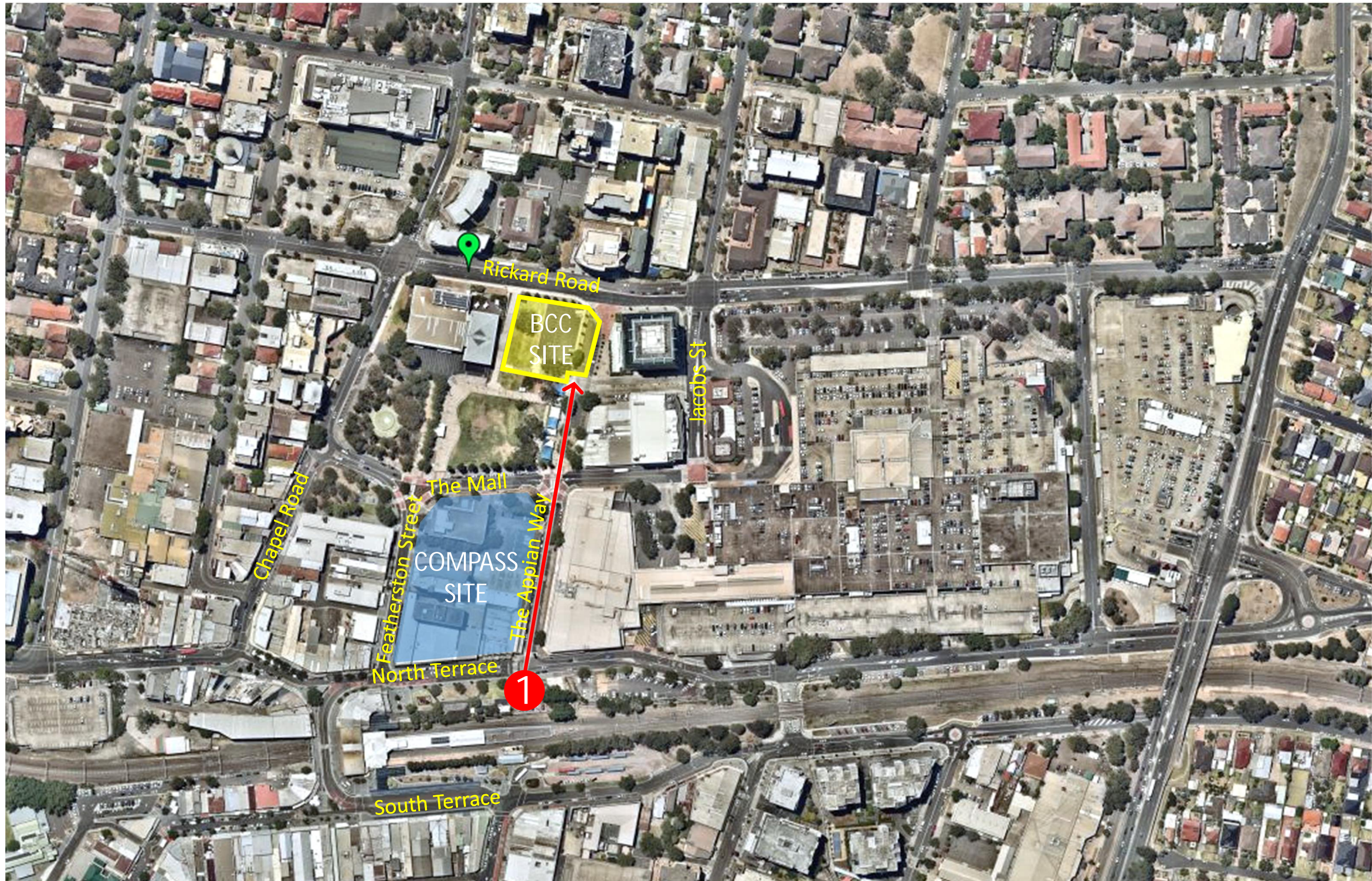




- Photomontages which show the building as viewed at human eye level from:
  - 1 The southern end of The Appian Way, adjacent to the railway corridor looking northward.
  - 2 The southern end of Paul Keating Park looking northward.
  - 3 The Mall, looking between Civic Tower and the Hoyts building, looking north west .
  - 4 Council Chambers looking north east.
  - 5 The corner of Rickard Road and Lady Cutler Avenue, looking west.
  - 6 The view from the corner of Chapel Road and Rickard Road, looking east.
  - 7 Apex Reserve looking south toward Bankstown City Centre .
  - 8 Wattle Street, opposite Mt Lewis Village Centre, looking west.
- Each view should be considered against both the existing and the future contexts of the building.
- Additional montages have been prepared including the approved Compass Site development proposal, where this development will be visible in the future view.
- Further to the requested views, four additional Photomontages have been prepared, showing how the design sits with the existing and future context from additional relevant vantage points:
  - A. Conway Road looking south.
  - B. Rickard Road from Meredith Street looking east.
  - C. South Terrace view looking north from Restwell Street.
  - D. Stacey Street Bridge looking north west.



The southern end of The Appian Way, adjacent to the railway corridor looking northward.











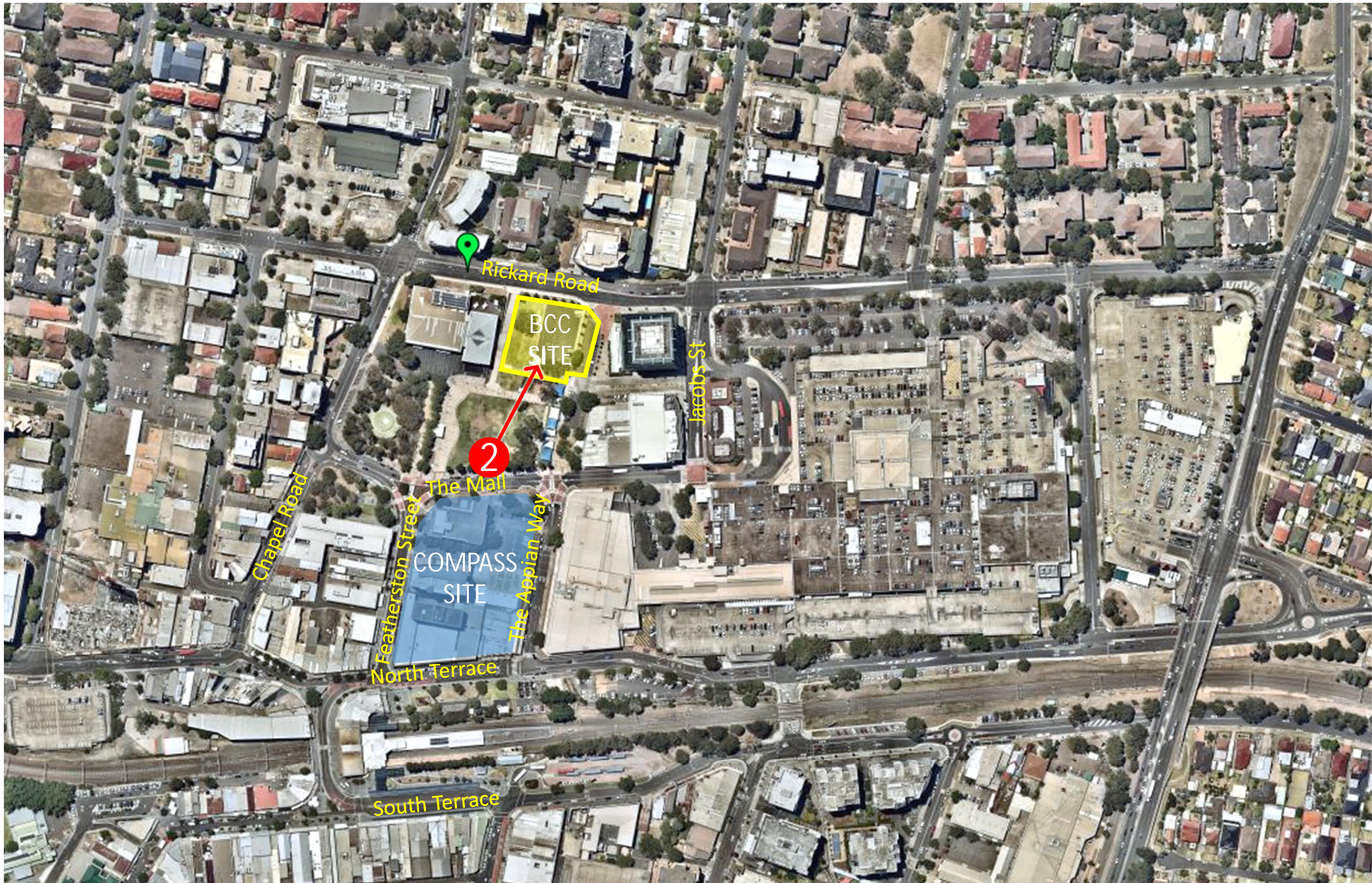


# SEARs View 1: With Bankstown City Development and Compass Development massing





The southern  
end of Paul  
Keating Park  
looking  
northward





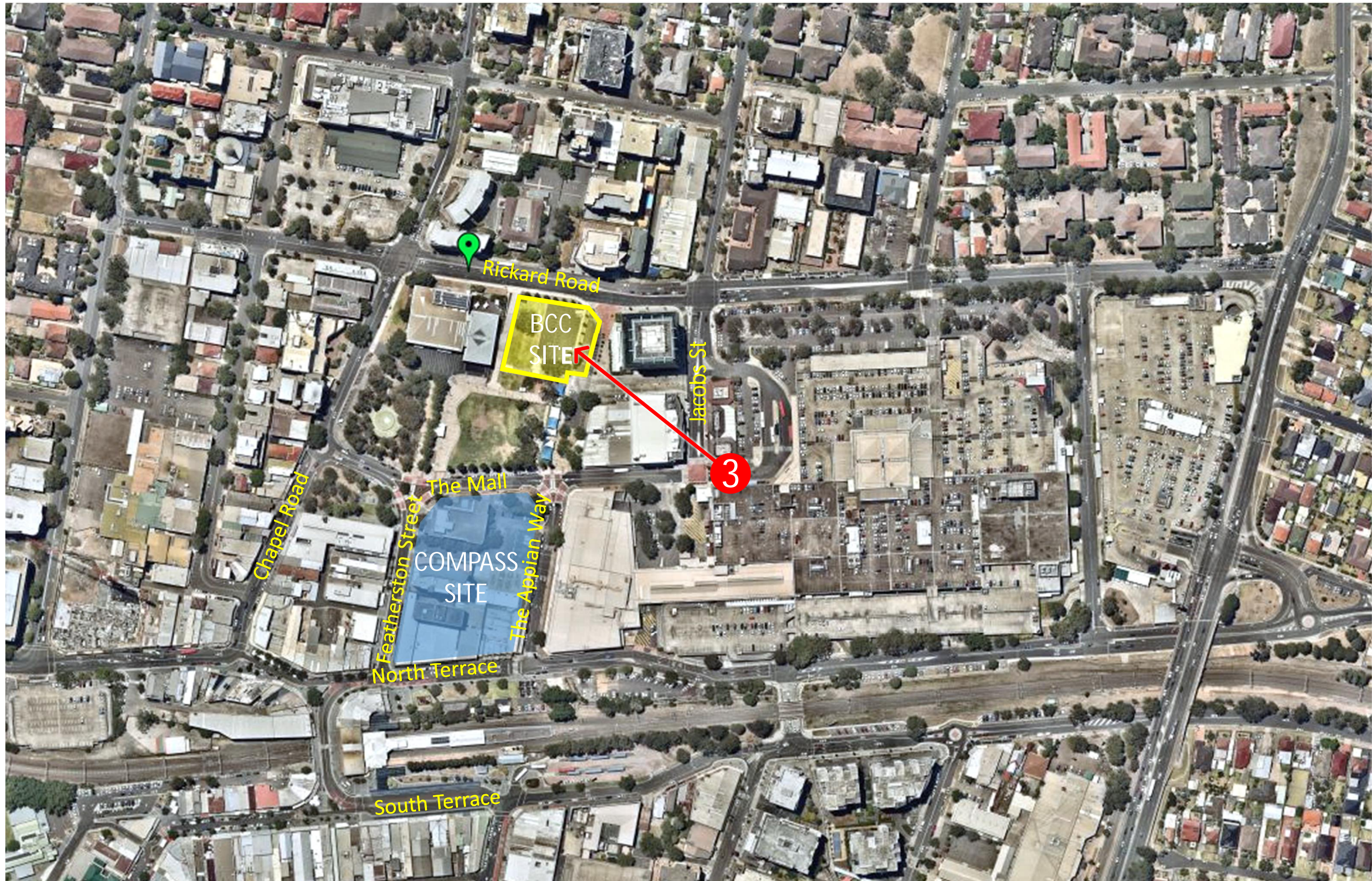








View from The Mall, looking between Civic Tower and the Hoyts building, looking north west





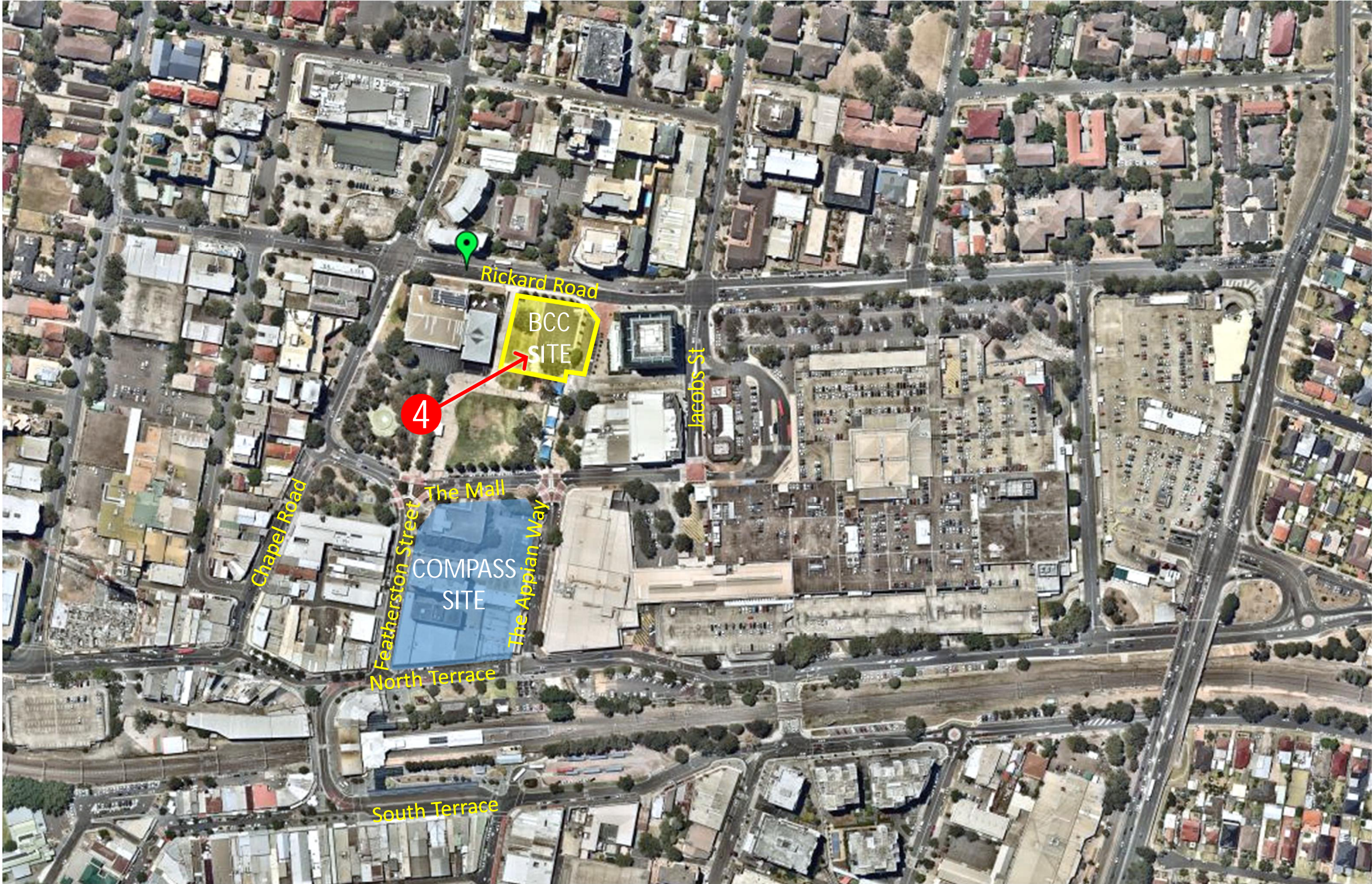








Council  
Chambers  
looking north  
east





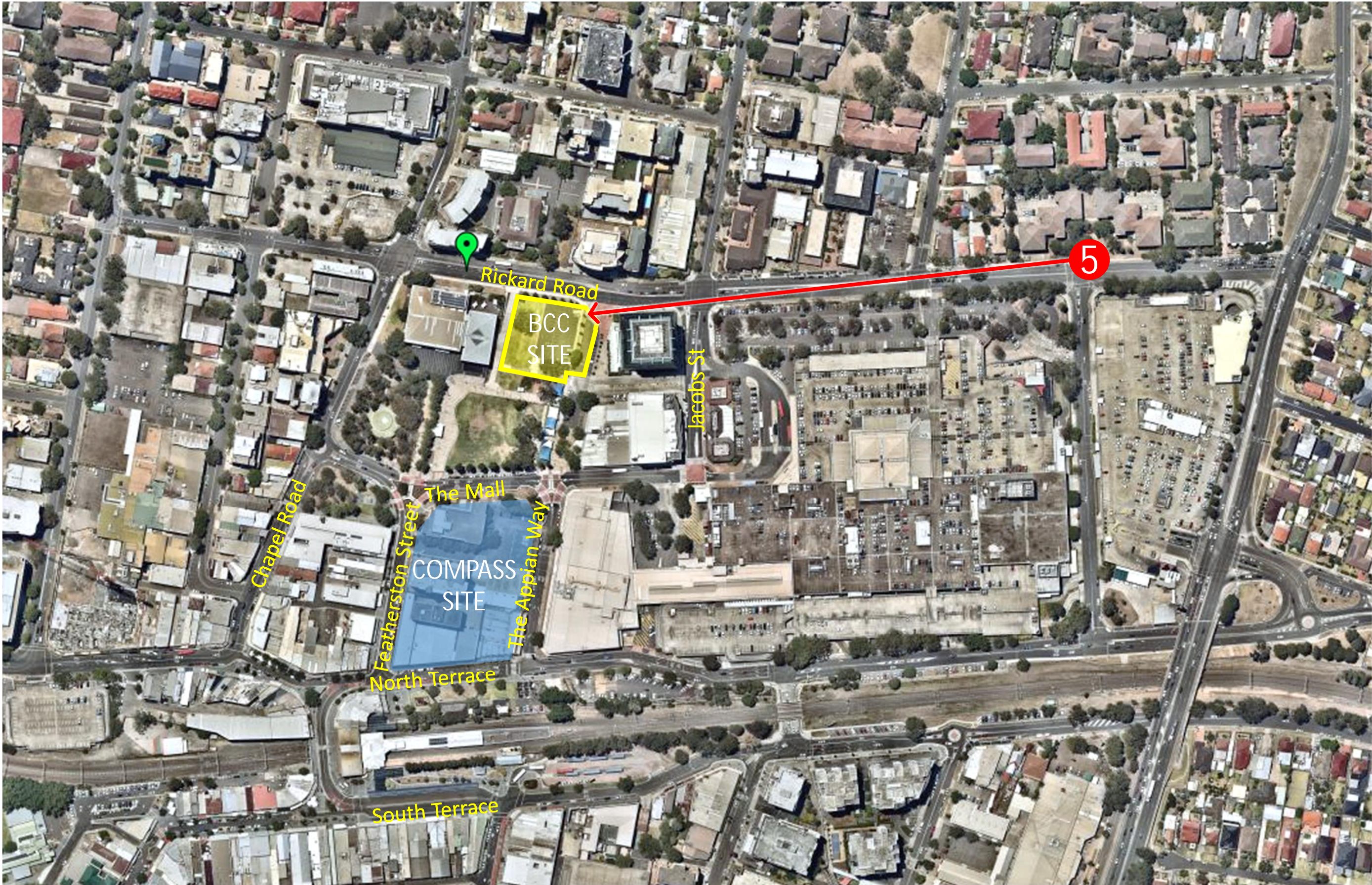








The corner of Rickard Road and Lady Cutler Avenue, looking west





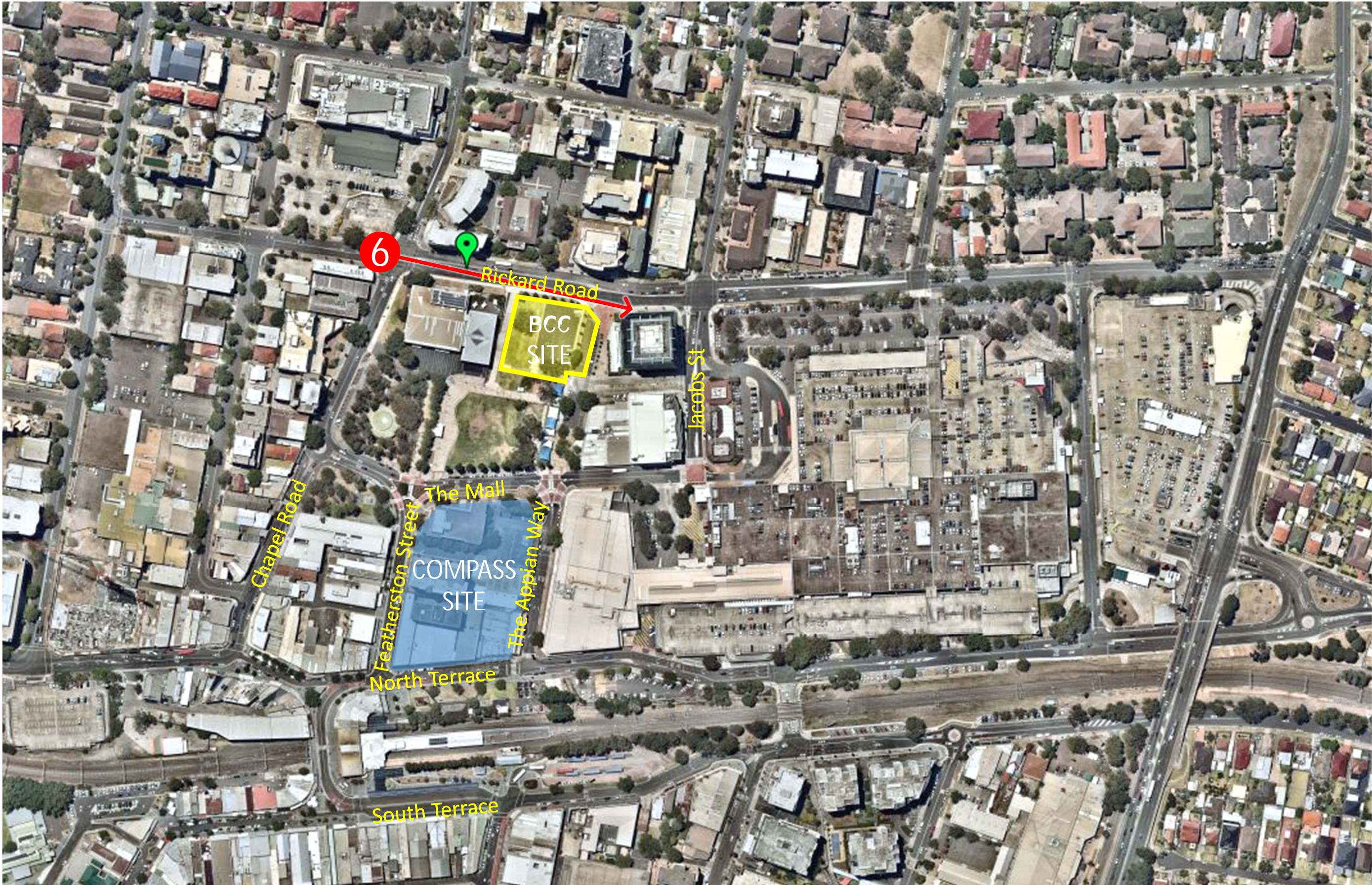








The view from the corner of Chapel Road and Rickard Road, looking east











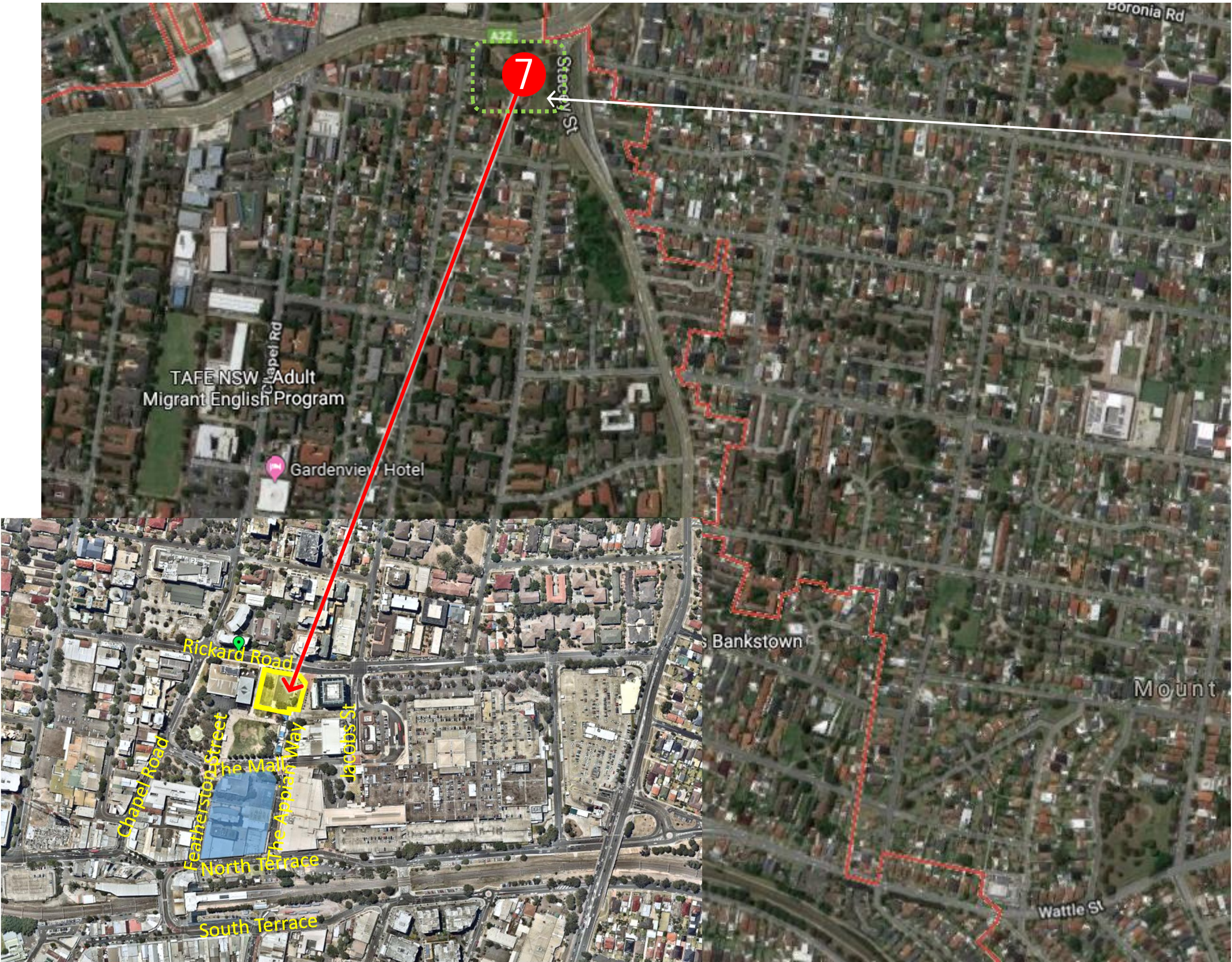


## SEARs View 6: With Bankstown City Campus and Compass Site development





Apex Reserve  
looking south  
toward  
Bankstown City  
Centre



Apex Reserve (Remi  
Street)









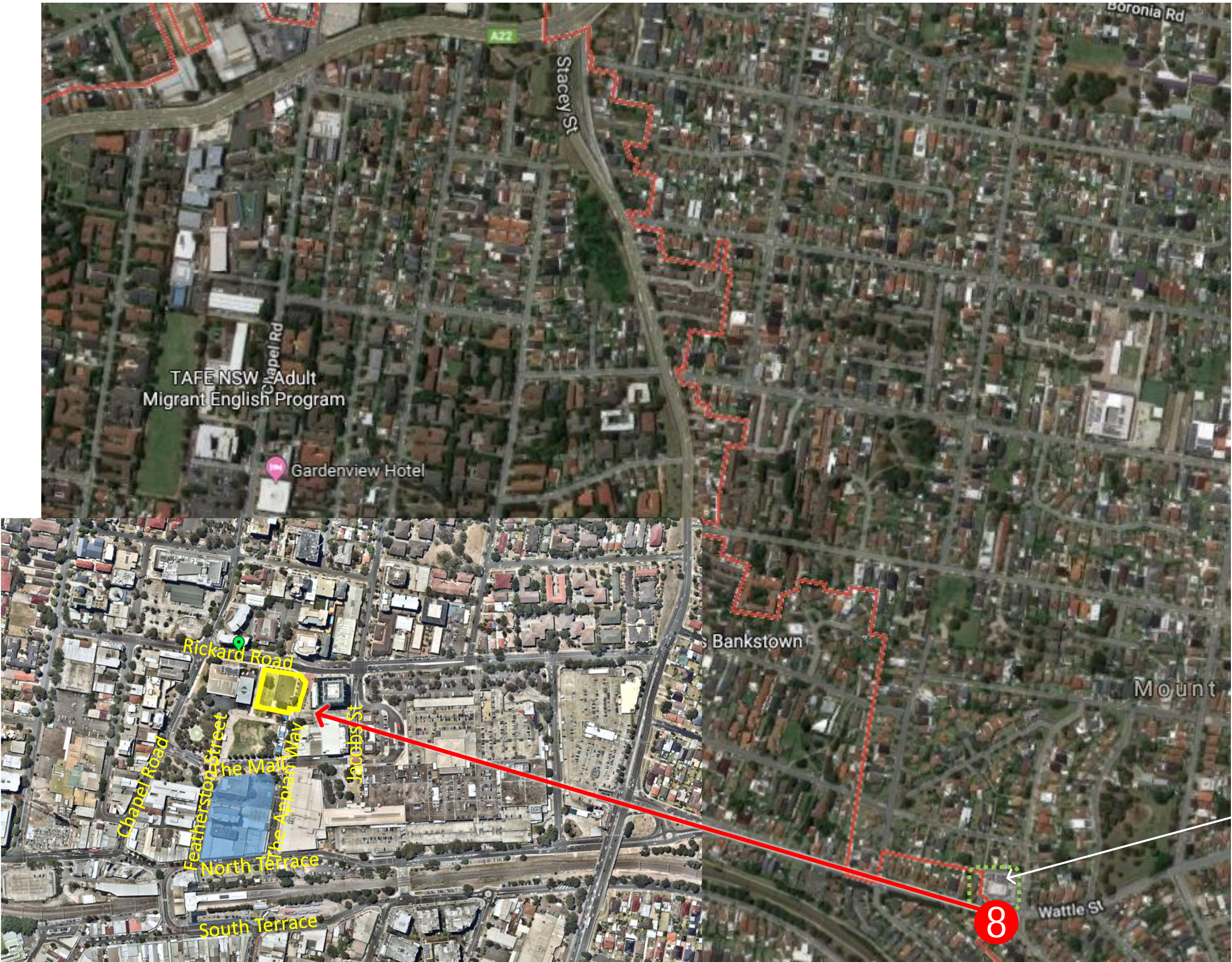


## SEARs View 7: With Bankstown City Campus and Compass Site Development





The view from  
Wattle Street,  
opposite Mt  
Lewis village  
centre, looking  
west



Mt Lewis Village  
Centre (Shops)



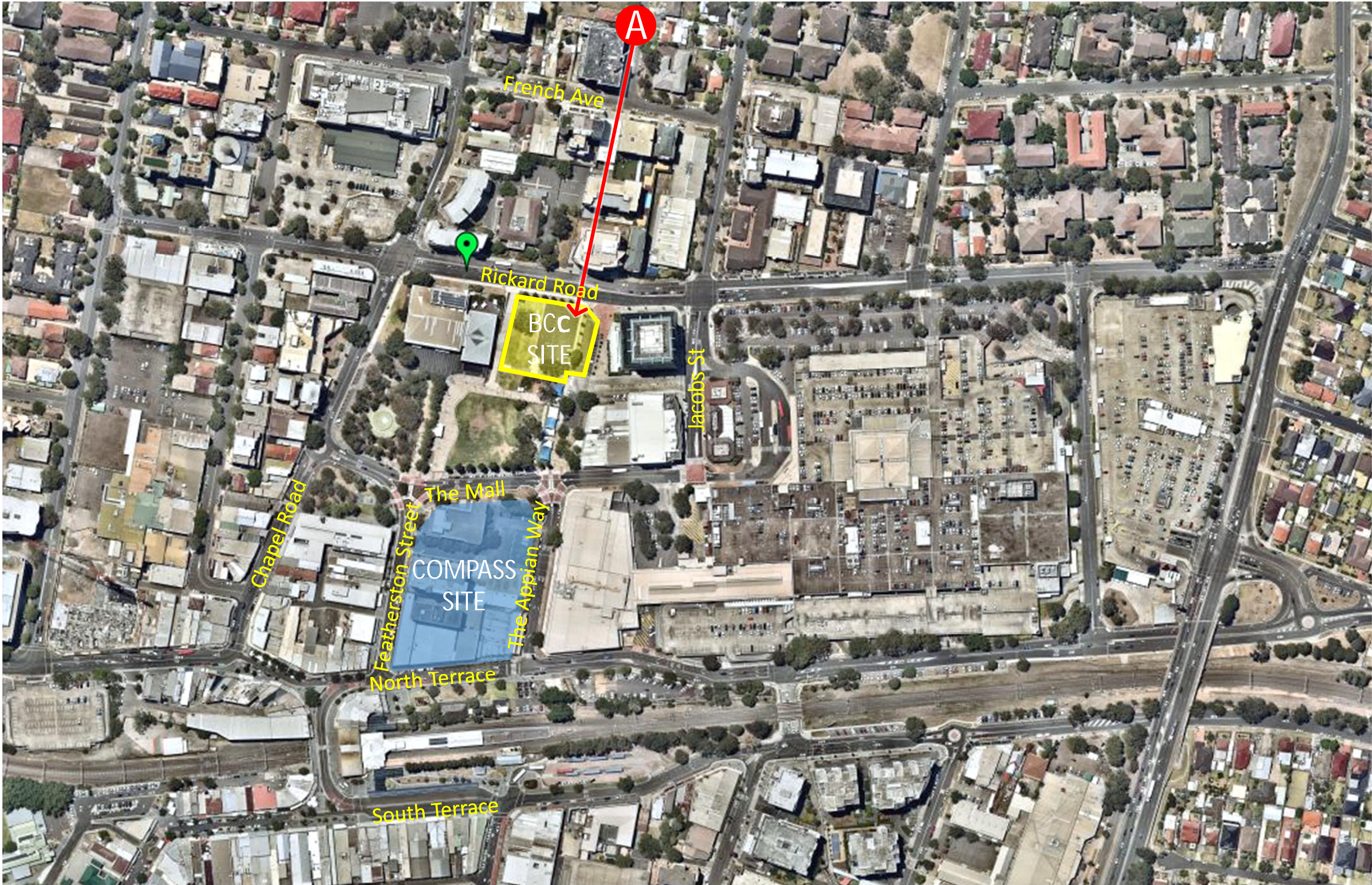








Conway Road  
looking South.







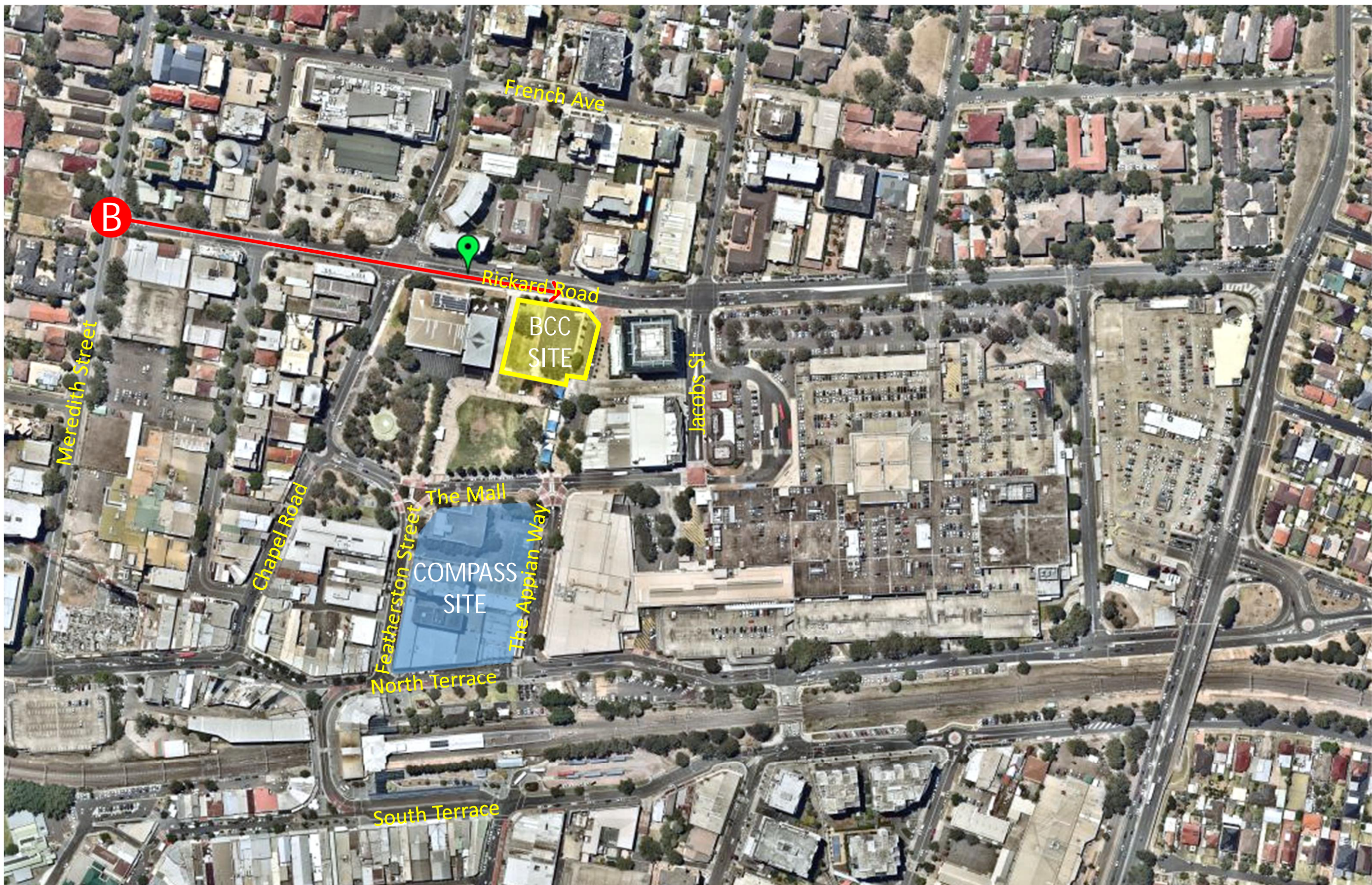


# SEARs Additional View A: With Bankstown City Campus Development





Rickard Road  
from Meredith  
Street looking  
East







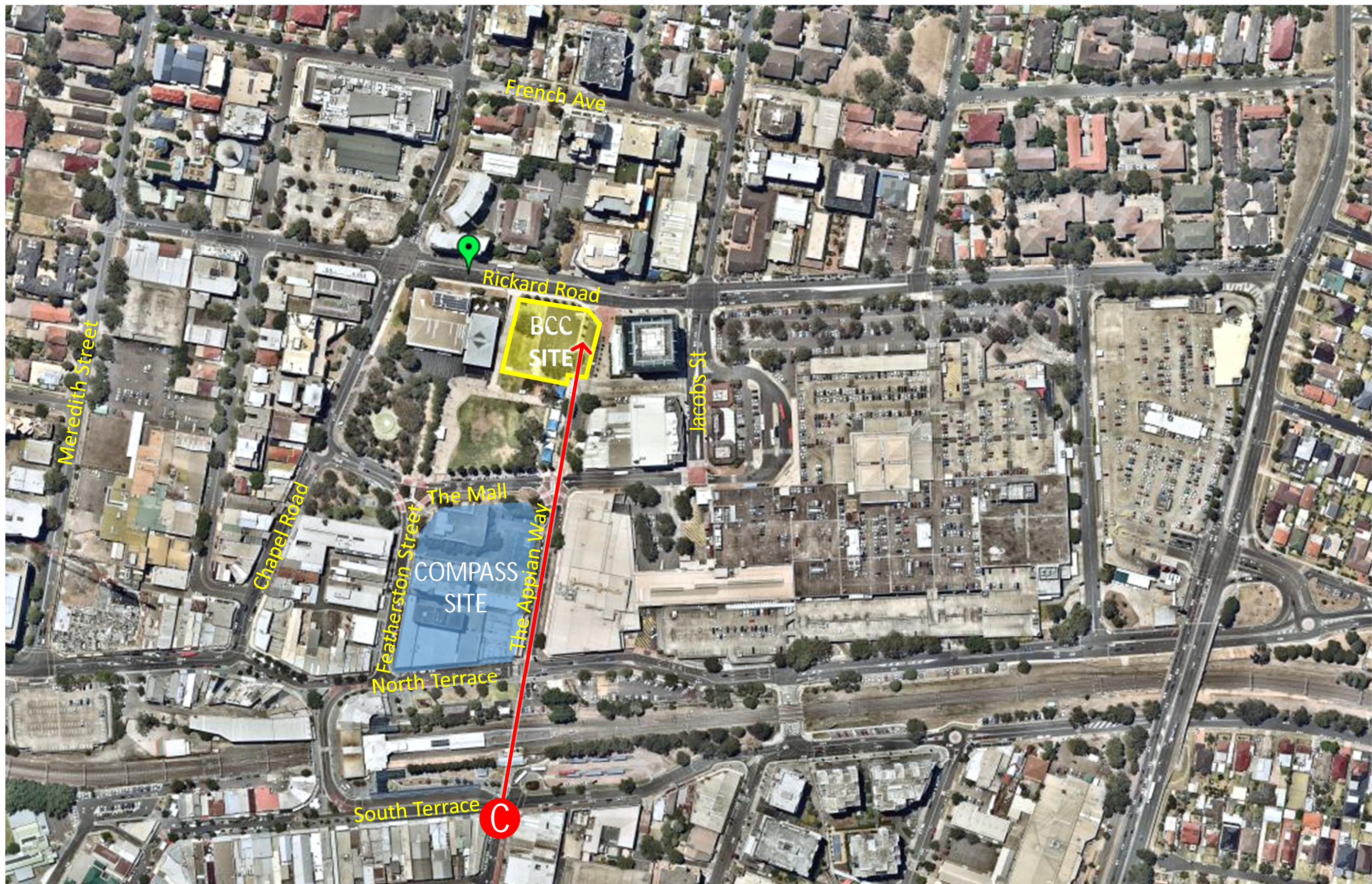


# SEARs Additional View B: With Bankstown City Development





South Terrace  
view looking  
North from  
Restwell Street.









# SEARs Additional View C: With Bankstown City Development



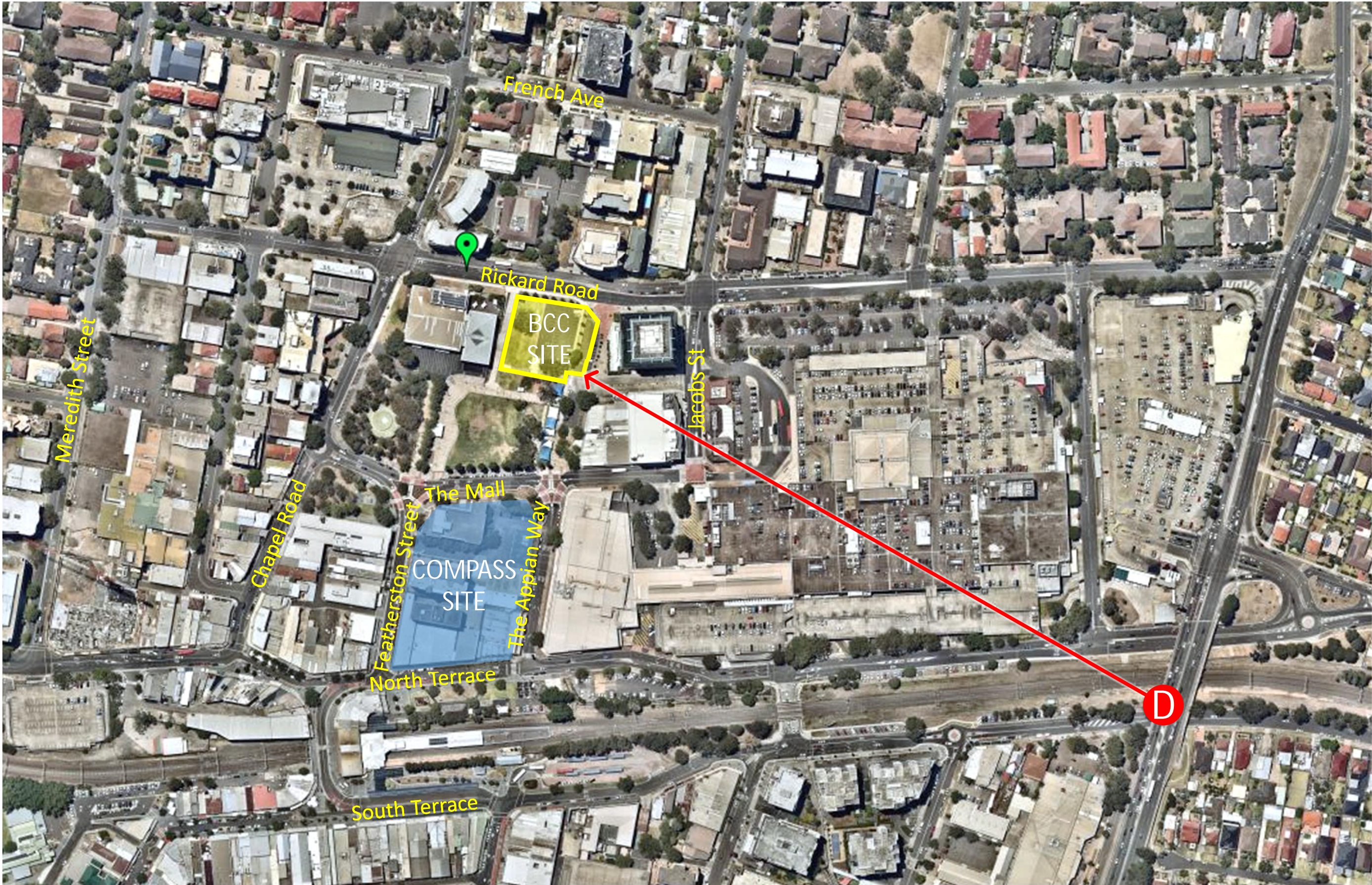


SEARs Additional View C: With Bankstown City Development and Compass Site Development





Stacey Street  
Bridge looking  
North West









# SEARs Additional View D: With Bankstown City Development





SEARs Additional View D: With Bankstown City Development and Compass Site Development

