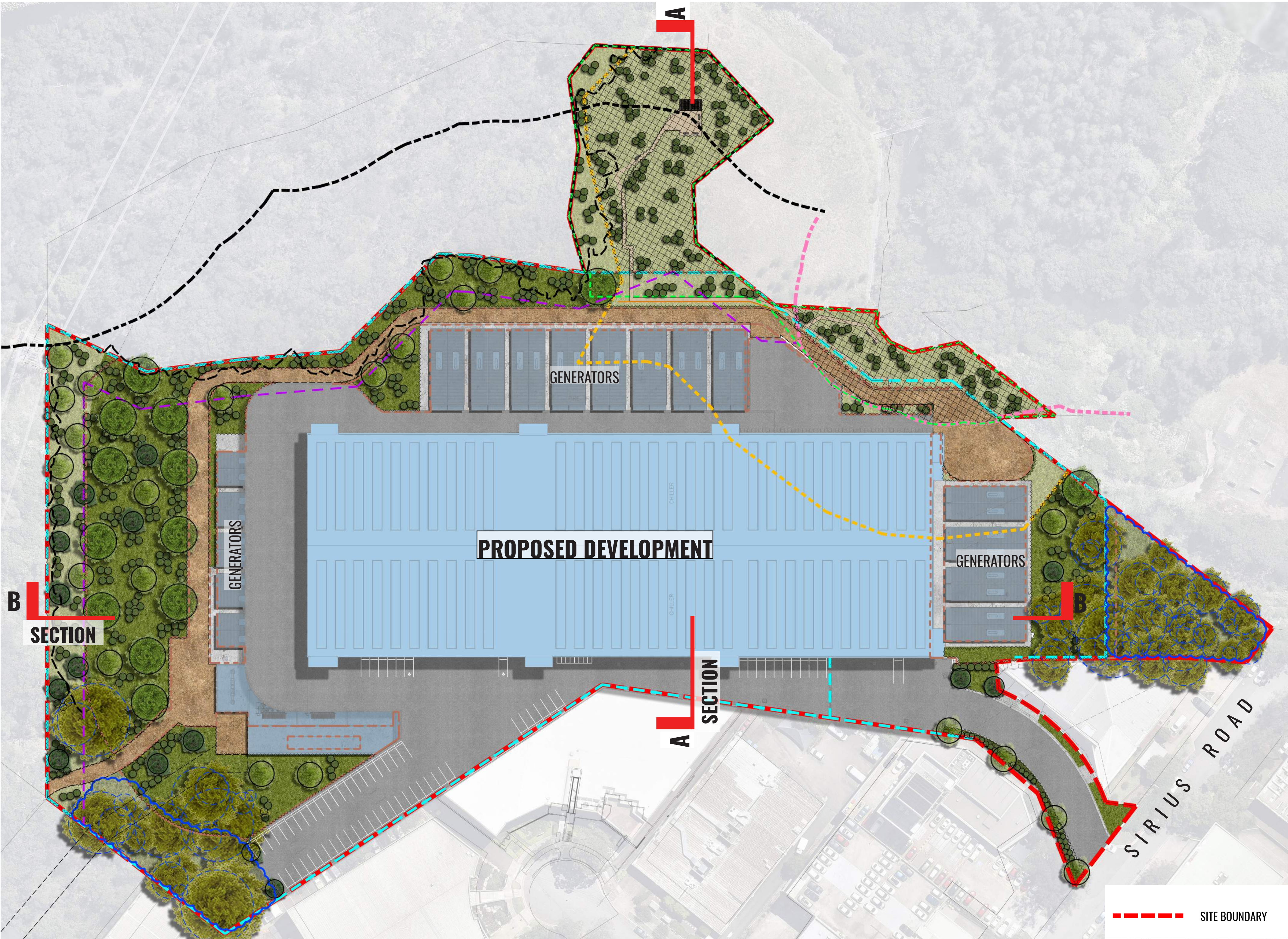


# Proposed Data Centre Development

1 Sirius Road, Lane Cove West NSW 2066

Landscape Documentation For State Significant Development



Drawing Register:	
Dwg No.	Drawing Name
LDA-00	Cover Sheet
LDA-01	Landscape Masterplan
LDA-02	Landscape Detailed Plan
LDA-03	Landscape Sections: AA & BB
LDA-04	Landscape Deep Soil Plan
LDA-05	Existing Tree Plan & Tree Data Table
LDA-06	Typical Landscape Details & Specification
LDA-07	Planting Schedules

## Landscape Design Statement

The project at 1 Sirius Road, Lane Cove West, involves the development of a Data Centre within a development area of 3.9 ha. The site is accessed via an existing driveway from Sirius Road and is part of Lane Cove Business Park and zoned IN2 Light Industrial.

Landscaping design aims to provide the following:

- Adhering to the bushfire requirements.
- Preservation and retention of existing trees where possible.
- Strengthening local character with the use of local indigenous species.
- Provision of 10% of the site for Landscape Amenity for workers.
- To help screen and filter views of the development for users of the adjacent bushland and visual receptors within the wider context with tree and shrub planting.

Refer to Landscape Design Report LDR01 by Geoscapes for further design details.

Drawing Title:  
Cover Sheet  
  
DWG No:

LDA-00

GEOSCAPES

LANDSCAPE ARCHITECTS

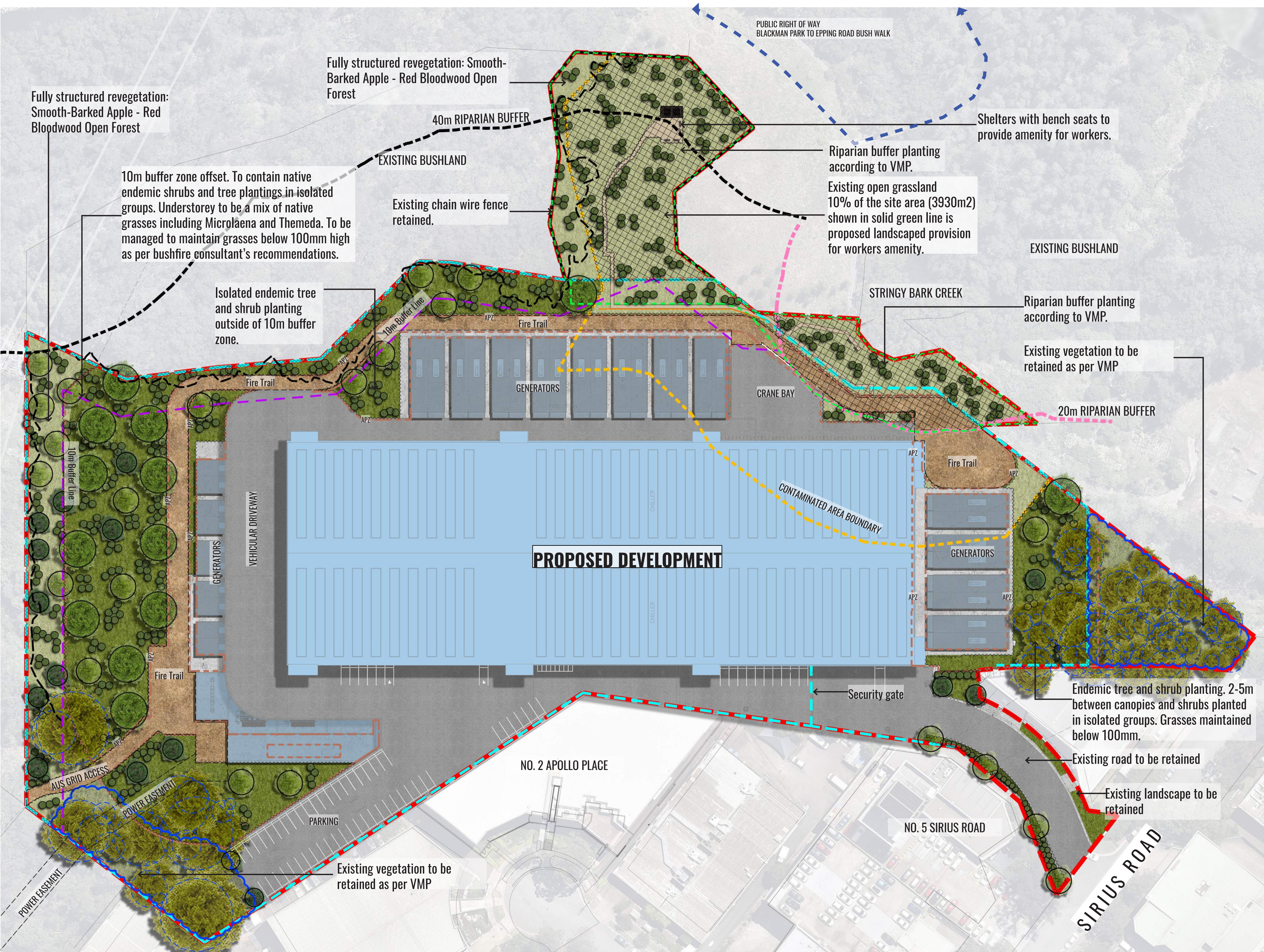
Suite 215, 284 Victoria Av, Chatswood NSW 2067 Ph. (02) 9411 1485  
www.geoscapes.com.au ABN 84 620 205 781 ACN 620 205 781  
Registered Landscape Architect #5868

Client:

GREENBOX

Scale:	Date:	Job Number:	North:	FOR DEVELOPMENT APPROVAL				
N/A	26.08.19	181108		Revision				
Project:	Proposed Data Centre Lane Cove West NSW 2066			Rev	Date	Description	Drawn	Checked
				C	26.08.19	FOR SSD SUBMISSION	SW	BG
				B	03.07.19	FOR SSD SUBMISSION	SW	BG
				A	18.12.18	FOR SSD SUBMISSION	GC	BG





**LEGEND**

SITE BOUNDARY

RETAINING WALL

2.4m HIGH PALISADE SECURITY FENCE

EXISTING TREE TO BE RETAINED (REFER TO ARBORIST'S REPORT)

NATIVE ENDEMIC CANOPY TREE PLANTING (MAXIMUM 15% OF THE SITE AREA)

MIX OF INDIGENOUS SHRUB PLANTING (MAXIMUM 10% OF THE SITE AREA)

NATIVE GROUNDCOVER PLANTING MIX (APZ) (TO BE MANAGED TO 100mm HIGH)

FIRE TRAIL

DG

PROPOSED DECO GRANITE AMENITY AREA

EXISTING TREE CANOPY FROM ADJOINING BOUNDARY

BUSH REGENERATION AREA REFER TO VMP

10M BUFFER LINE FROM BUSH LAND

AREA OF CONTAMINATED LANDS

20m RIPARIAN ZONE BUFFER (REFER TO VMP PREPARED BY TRAVERS ECOLOGY)

40m RIPARIAN ZONE BUFFER (REFER TO VMP PREPARED BY TRAVERS ECOLOGY)

APZ

EXTENT OF ASSET PROTECTION ZONE (APZ BOUNDARY). REFER TO VMP PREPARED BY TRAVERS ECOLOGY

1.0m WIDE PERMEABLE WALKING PATHWAY TO AMENITY AREA

EXISTING CHAIN LINK FENCE RETAINED ALONG NORTHERN BOUNDARY.

RE-VEGETATION RIPARIAN PLANTING TO VMP AND DPI REQUIREMENTS (REFERS TO TRAVERS BUSHFIRE & ECOLOGY)

Revision			FOR DEVELOPMENT APPROVAL	
Rev	Date	Description	Drawn	Checked
C	26.08.19	FOR SSD SUBMISSION	SW	BG
B	03.07.19	FOR SSD SUBMISSION	SW	BG
A	18.12.18	FOR SSD SUBMISSION	GC	BG

Drawing Title:  
**Landscape Masterplan**  
  
DWG No:

**LDA-01**

**GEOSCAPES**  
LANDSCAPE ARCHITECTS  
Suite 215, 284 Victoria Av. Chatswood NSW 2067 Ph. (02) 9411 1485  
www.geoscapes.com.au ABN 84 620 205 781 ACN 620 205 781  
Registered Landscape Architect #5868

Client:

**GREENBOX**

Scale:  
1:500 @ A1  
1:1000 @ A3

Date:  
26.08.19

Job Number:  
181108

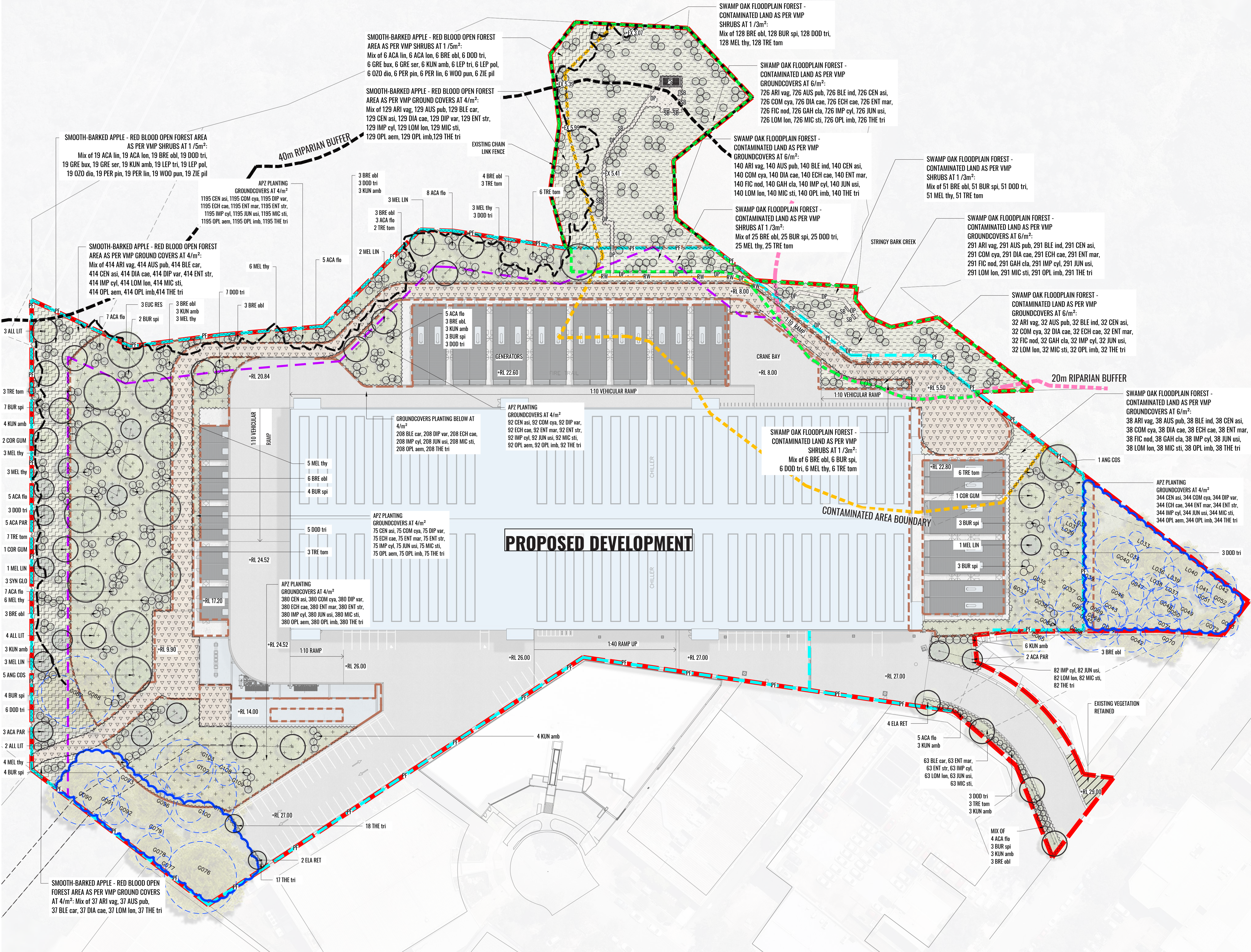
North:

Project:

Proposed Data Centre  
Lane Cove West NSW 2066

Revision			FOR DEVELOPMENT APPROVAL	
Rev	Date	Description	Drawn	Checked
C	26.08.19	FOR SSD SUBMISSION	SW	BG
B	03.07.19	FOR SSD SUBMISSION	SW	BG
A	18.12.18	FOR SSD SUBMISSION	GC	BG





LEGEND				
XX MEL thy →				

Drawing Title:  
Landscape Detailed Plan

DWG No:

LDA-02

**GEOSCAPES**  
LANDSCAPE ARCHITECTS  
Suite 215, 284 Victoria Av. Chatswood NSW 2067 Ph. (02) 9411 1485  
www.geoscapes.com.au ABN 84 620 205 781 ACN 620 205 781  
Registered Landscape Architect #5868

Client:

GREENBOX

Scale:

1:500 @ A1  
1:1000 @ A3

Date:

26.08.19

Job Number:

181108

North:



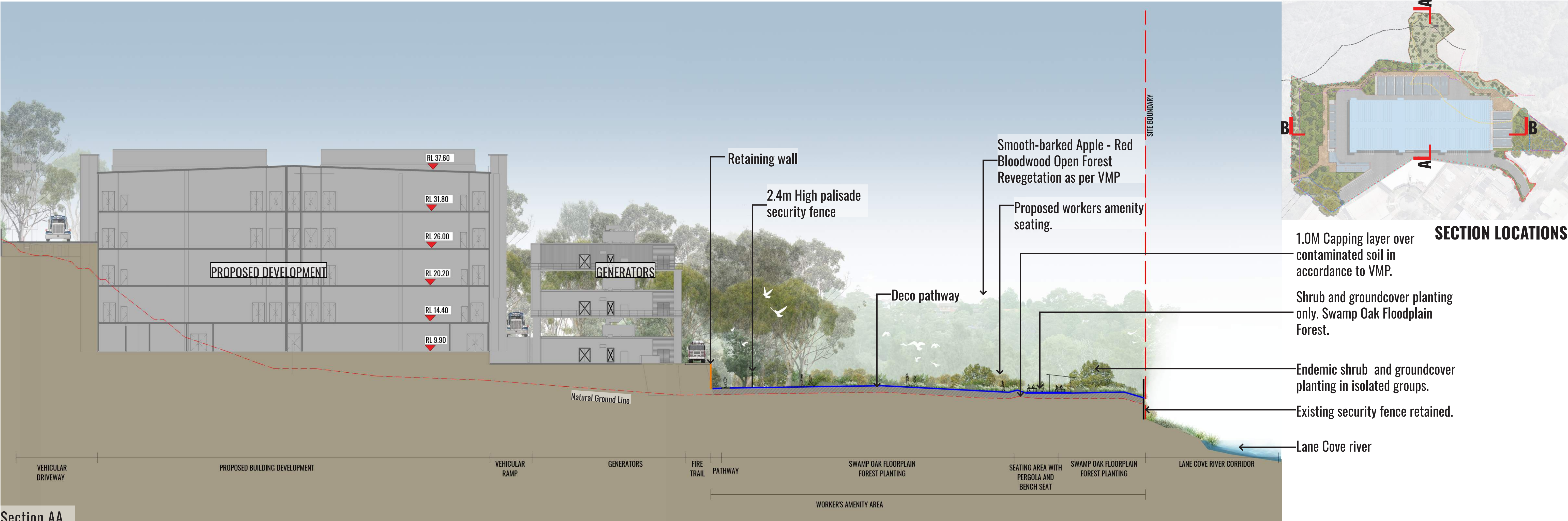
Project:

Proposed Data Centre

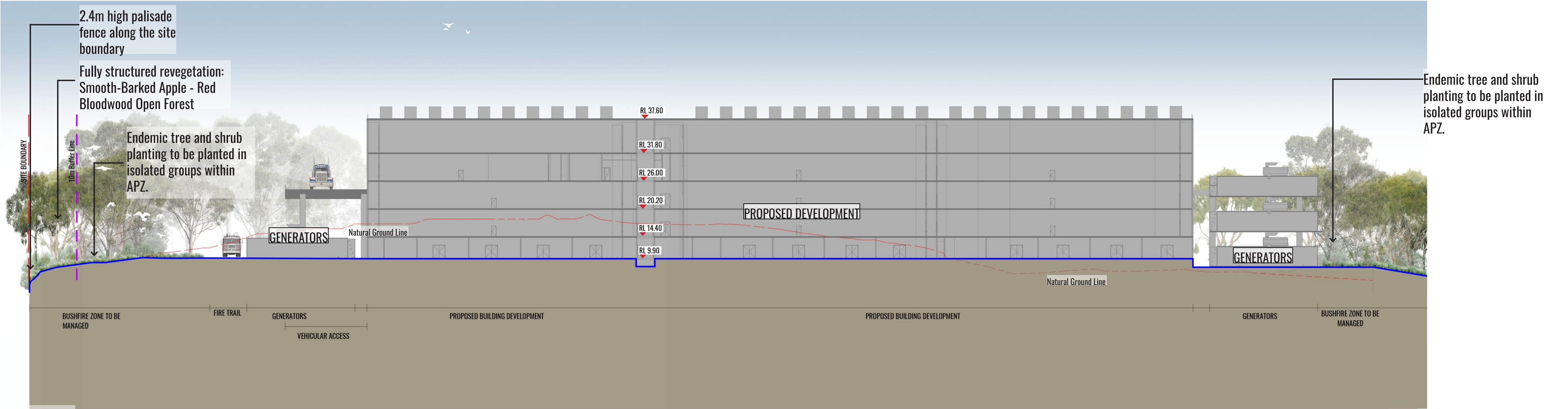
Lane Cove West NSW 2066

Revision		FOR DEVELOPMENT APPROVAL		
Rev	Date	Description	Drawn	Checked
C	26.08.19	FOR SSD SUBMISSION	SW	BG
B	03.07.19	FOR SSD SUBMISSION	SW	BG
A	18.12.18	FOR SSD SUBMISSION	CC	BG





Section AA  
1:300



Section BB  
1:400

Drawing Title:  
**Landscape Sections - AA & BB**  
  
DWG No:

**LDA-03**

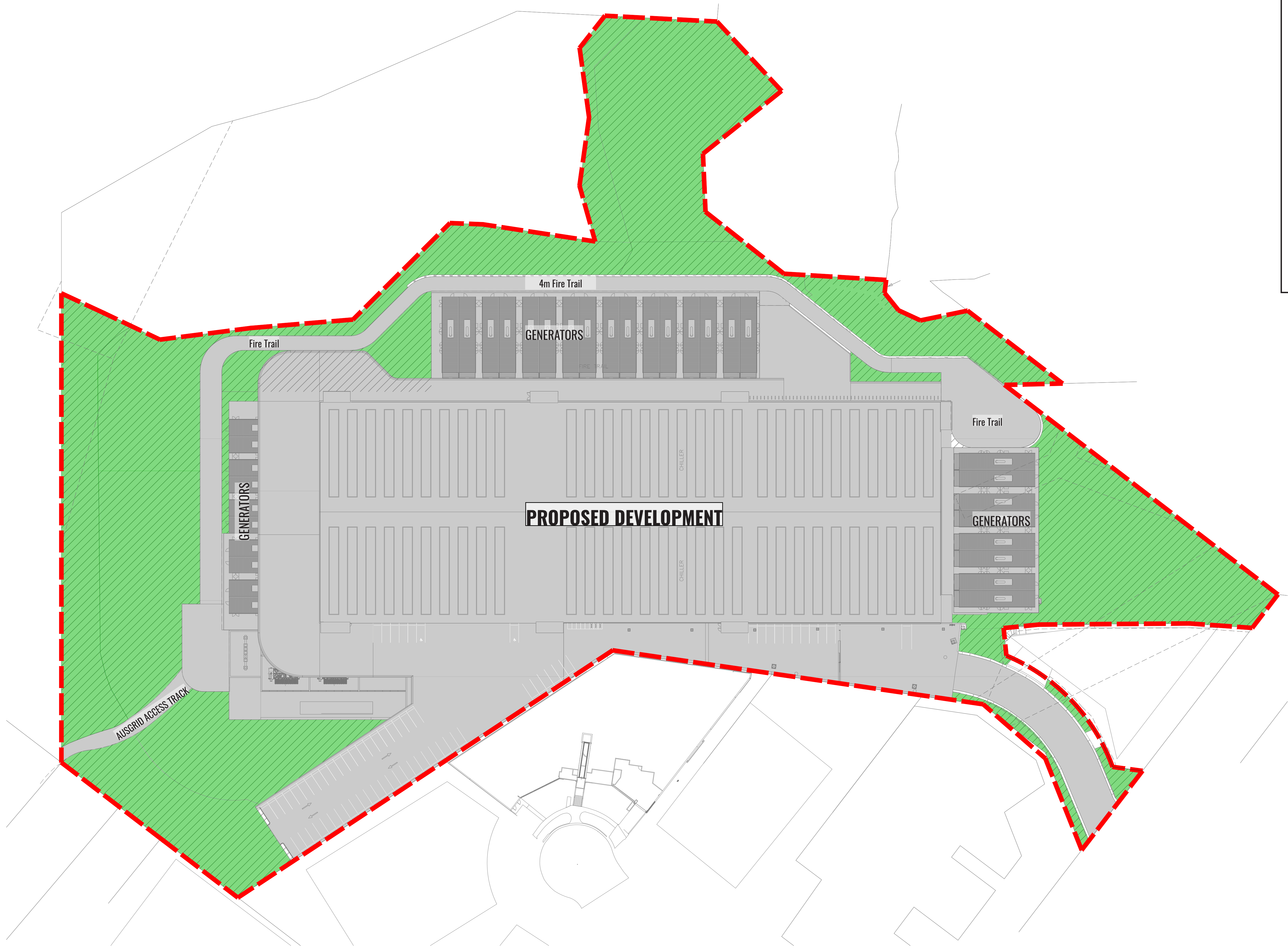
**GEOSCAPES**  
LANDSCAPE ARCHITECTS  
Suite 215, 284 Victoria Av. Chatswood NSW 2067 Ph. (02) 9411 1485  
www.geoscapes.com.au ABN 84 620 205 781 ACN 620 205 781  
Registered Landscape Architect #5868

Client:

**GREENBOX**

Scale:	Date:	Job Number:	North:	Revision	FOR DEVELOPMENT APPROVAL			
AS SHOWN	26.08.19	181108	N/A	Rev	Date	Description	Drawn	Checked
Project: Proposed Data Centre Lane Cove West NSW 2066				C	26.08.19	FOR SSD SUBMISSION	SW	BG
				B	03.07.19	FOR SSD SUBMISSION	SW	BG
				A	18.12.18	FOR SSD SUBMISSION	GC	BG





LEGEND

SITE BOUNDARY

TOTAL BUILT UPON AREA INCLUDING  
PROPOSED DEVELOPMENT, PARKING,  
VEHICULAR DRIVEWAY & FIRE EGRESS.

LANDSCAPE DEEP SOIL ZONE  
TOTAL AREA: 39453 m2  
LANDSCAPE DEEP SOIL AREA:  
14042 m2 ~35.59%

LANDSCAPE AREA  
TOTAL LANDSCAPE AREA :  
14472 m2 = 36.68%

Drawing Title:  
**Landscape Deep Soil Plan**

DWG No:

**LDA-04**

GEOSCAPH

LANDSCAPE ARCHITECTS

Suite 215, 284 Victoria Av. Chatswood NSW 2067 Ph. (02) 9411 1485  
www.geoscapes.com.au ABN 84 620 205 781 ACN 620 205 781  
Registered Landscape Architect #5868

Client:

GREENBOX

Scale:  
1:500 @ A1  
1:1000 @ A3

Date:  
26.08.19

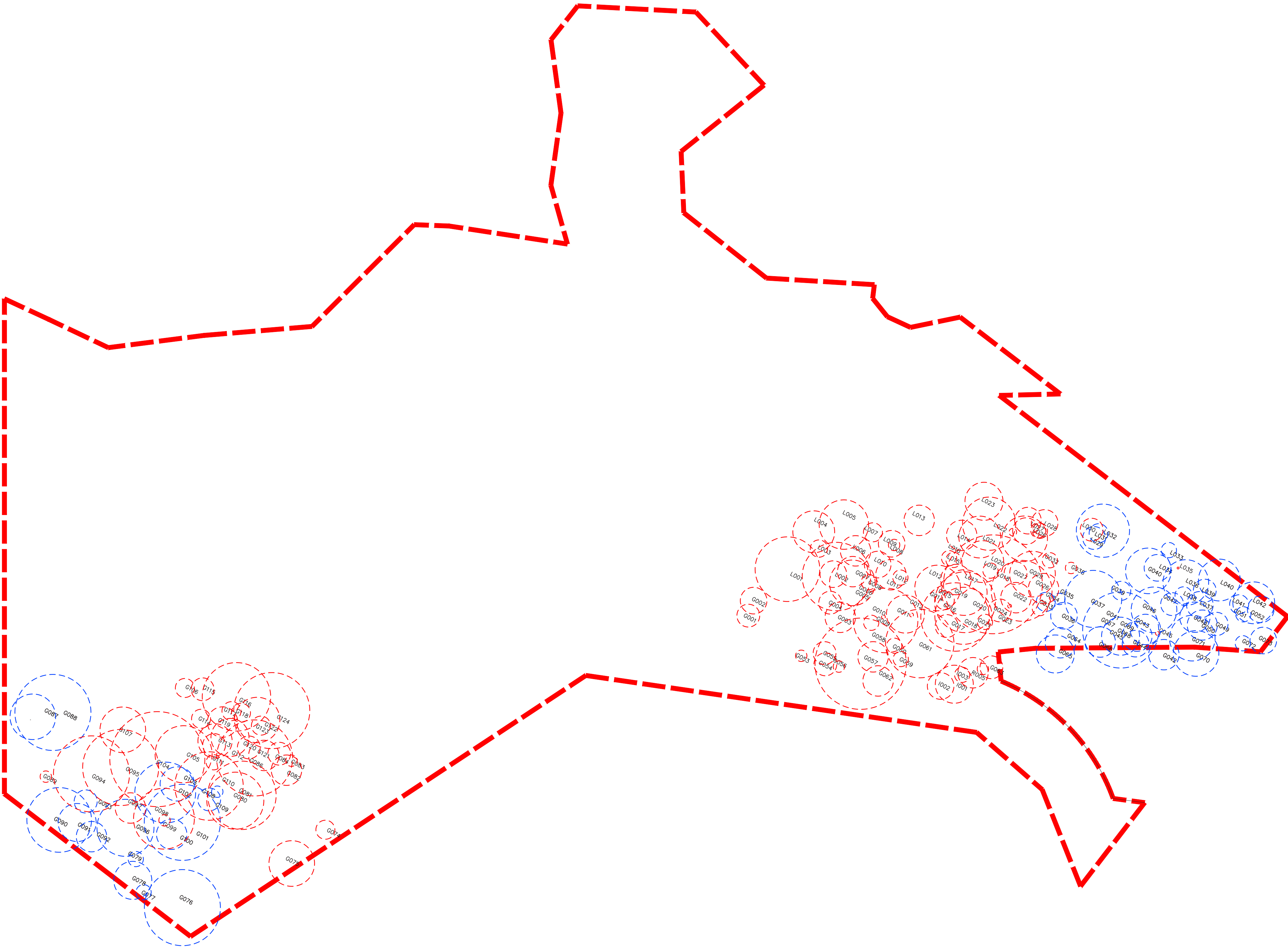
Job Number:  
181108

North:

Project:  
Proposed Data Centre  
Lane Cove West NSW 2066

Revision			FOR DEVELOPMENT APPROVAL	
Rev	Date	Description	Drawn	Checked
C	26.08.19	FOR SSD SUBMISSION	SW	BG
B	03.07.19	FOR SSD SUBMISSION	SW	BG
A	18.12.18	FOR SSD SUBMISSION	GC	BG





LEGEND

SITE BOUNDARY

G036

EXISTING TREE TO BE REMOVED  
(REFER TO ARBORIST'S REPORT)

G037

EXISTING TREE TO BE RETAINED  
(REFER TO ARBORIST'S REPORT)

Tag No.	Common name	Scientific name	Ret/Rem
T-G001	Camphor Laurel	<i>Cinnamomum camphora</i>	Remove
T-G002	Narrow-leaved Paperbark	<i>Melaleuca linariifolia</i>	Remove
T-G003	Red Bloodwood	<i>Corymbia gummifera</i>	Remove
T-G004	Smooth-barked Apple	<i>Angophora costata</i>	Remove
T-G005	Sydney Peppermint	<i>Eucalyptus piperita</i>	Remove
T-G006	Sydney Peppermint	<i>Eucalyptus piperita</i>	Remove
T-G007	Smooth-barked Apple	<i>Angophora costata</i>	Remove
T-G008	Smooth-barked Apple	<i>Angophora costata</i>	Remove
T-G009	Red Bloodwood	<i>Corymbia gummifera</i>	Remove
T-G010	Smooth-barked Apple	<i>Angophora costata</i>	Remove
T-G011	Dead Stag	Dead Stag	Remove
T-G012	Smooth-barked Apple	<i>Angophora costata</i>	Remove
T-G013	Dead Stag	Dead Stag	Remove
T-G014	Red Bloodwood	<i>Corymbia gummifera</i>	Remove
T-G015	Dead Stag	Dead Stag	Remove
T-G016	Parramatta Wattle	<i>Acacia parramattensis</i>	Remove
T-G017	Sydney Peppermint	<i>Eucalyptus piperita</i>	Remove
T-G018	Smooth-barked Apple	<i>Angophora costata</i>	Remove
T-G019	Black She-oak	<i>allicosuarina littoralis</i>	Remove
T-G020	Smooth-barked Apple	<i>Angophora costata</i>	Remove
T-G021	Smooth-barked Apple	<i>Angophora costata</i>	Remove
T-G022	Cheese Tree	<i>Glochidion ferdinandi</i>	Remove
T-G023	Cheese Tree	<i>Glochidion ferdinandi</i>	Remove
T-G024	Dead Stag	Dead Stag	Remove
T-G025	Camphor Laurel	<i>Cinnamomum camphora</i>	Retain
T-G026	Dead Stag	Dead Stag	Remove
T-G027	Cheese Tree	<i>Glochidion ferdinandi</i>	Remove
T-G028	Cheese Tree	<i>Glochidion ferdinandi</i>	Remove
T-G029	Cheese Tree	<i>Glochidion ferdinandi</i>	Remove
T-G030	Red Mahogany	<i>Eucalyptus resinifera</i>	Remove
T-G031	Dead Stag	Dead Stag	Remove
T-G032	Dead Stag	Dead Stag	Remove
T-G033	Cheese Tree	<i>Glochidion ferdinandi</i>	Retain
T-G034	Dead Stag	Dead Stag	Remove
T-G035	Cheese Tree	<i>Glochidion ferdinandi</i>	Retain
T-G036	Camphor Laurel	<i>Cinnamomum camphora</i>	Remove
T-G037	Smooth-barked Apple	<i>Angophora costata</i>	Retain
T-G038	Dead Stag	Dead Stag	Remove
T-G039	Black She-oak	<i>Allicosuarina littoralis</i>	Retain
T-G040	Hard-leaved Scribbly Gum	<i>Eucalyptus sclerophylla</i>	Retain
T-G041	Hard-leaved Scribbly Gum	<i>Eucalyptus sclerophylla</i>	Retain
T-G042	Cheese Tree	<i>Glochidion ferdinandi</i>	Retain
T-G043	Smooth-barked Apple	<i>Angophora costata</i>	Retain
T-G044	Red Mahogany	<i>Eucalyptus resinifera</i>	Retain
T-G045	Dead Stag	Dead Stag	Remove
T-G047	Smooth-barked Apple	<i>Angophora costata</i>	Retain
T-G048	Smooth-barked Apple	<i>Angophora costata</i>	Retain
T-G049	Camphor Laurel	<i>Cinnamomum camphora</i>	Retain
T-G050	Cheese Tree	<i>Glochidion ferdinandi</i>	Retain
T-G051	Red Mahogany	<i>Eucalyptus resinifera</i>	Remove
T-G052	Camphor Laurel	<i>Cinnamomum camphora</i>	Retain
T-G053	Black She-oak	<i>Allicosuarina littoralis</i>	Remove
T-G054	Red Mahogany	<i>Eucalyptus resinifera</i>	Remove
T-G055	Red Mahogany	<i>Eucalyptus resinifera</i>	Remove
T-G056	Red Mahogany	<i>Eucalyptus resinifera</i>	Remove
T-G057	Sydney peppermint	<i>Eucalyptus piperita</i>	Remove
T-G058	Red bloodwood	<i>Corymbia gummifera</i>	Remove
T-G059	Parramatta Wattle	<i>Acacia parramattensis</i>	Remove
T-G060	Parramatta Wattle	<i>Acacia parramattensis</i>	Remove
T-G061	Sydney Peppermint	<i>Eucalyptus piperita</i>	Remove
T-G062	White Stringybark	<i>Eucalyptus globoides</i>	Remove
T-G063	Swamp Oak	<i>Casuarina glauca</i>	Remove
T-G064	Red Mahogany	<i>Eucalyptus resinifera</i>	Remove
T-G065	Red Mahogany	<i>Eucalyptus resinifera</i>	Retain
T-G066	Dead Stag	Dead Stag	Retain
T-G067	Smooth-barked Apple	<i>Angophora costata</i>	Remove
T-G068	Smooth-barked Apple	<i>Angophora costata</i>	Retain
T-G069	Red Mahogany	<i>Eucalyptus resinifera</i>	Retain
T-G070	Red Mahogany	<i>Eucalyptus resinifera</i>	Retain
T-G071	Red Mahogany	<i>Eucalyptus resinifera</i>	Retain
T-G072	Large-leaved Privet	<i>Ligustrum lucidum</i>	Retain
T-G073	Camphor Laurel	<i>Cinnamomum camphora</i>	Retain
T-G074	Hard-leaved Scribbly Gum	<i>Eucalyptus sclerophylla</i>	Remove
T-G075	Hard-leaved Scribbly Gum	<i>Eucalyptus sclerophylla</i>	Remove
T-G076	Hard-leaved Scribbly Gum	<i>Eucalyptus sclerophylla</i>	Remove
T-G077	Parramatta Wattle	<i>Acacia parramattensis</i>	Remove
T-G078	Red Mahogany	<i>Eucalyptus resinifera</i>	Retain
T-G079	Smooth-barked Apple	<i>Angophora costata</i>	Retain
T-G080	Smooth-barked Apple	<i>Angophora costata</i>	Retain
T-G081	Smooth-barked Apple	<i>Angophora costata</i>	Remove
T-G082	Smooth-barked Apple	<i>Angophora costata</i>	Remove
T-G083	-	<i>Eucalyptus sp.</i>	Remove
T-G084	Dead Stag	Dead Stag	Remove
T-G085	Smooth-barked Apple	<i>Angophora costata</i>	Remove
T-G086	Smooth-barked Apple	<i>Angophora costata</i>	Remove

T-G087	White Stringybark	<i>Eucalyptus globoides</i>	Retain
T-G088	Sydney Peppermint	<i>Eucalyptus piperita</i>	Retain
T-G089	Smooth-barked Apple	<i>Angophora costata</i>	Remove
T-G090	Sydney Peppermint	<i>Eucalyptus piperita</i>	Remove
T-G091	Smooth-barked Apple	<i>Angophora costata</i>	Retain
T-G092	Smooth-barked Apple	<i>Angophora costata</i>	Retain
T-G093	Sydney Peppermint	<i>Eucalyptus piperita</i>	Retain
T-G094	Sydney Peppermint	<i>Eucalyptus piperita</i>	Retain
T-G095	Sydney Peppermint	<i>Eucalyptus piperita</i>	Retain
T-G096	Smooth-barked Apple	<i>Angophora costata</i>	Remove
T-G097	Sydney Peppermint	<i>Eucalyptus piperita</i>	Remove
T-G098	Smooth-barked Apple	<i>Angophora costata</i>	Remove
T-G099	Sydney Peppermint	<i>Eucalyptus piperita</i>	Remove
T-G100	Smooth-barked Apple	<i>Angophora costata</i>	Remove
T-G101	Smooth-barked Apple	<i>Angophora costata</i>	Remove
T-G102	Smooth-barked Apple	<i>Angophora costata</i>	Remove
T-G103	Sydney Peppermint	<i>Eucalyptus piperita</i>	Remove
T-G104	Smooth-barked Apple	<i>Angophora costata</i>	Remove
T-G105	Sydney Peppermint	<i>Eucalyptus piperita</i>	Remove
T-G106	Sydney Peppermint	<i>Eucalyptus piperita</i>	Remove
T-G107	Sydney Peppermint	<i>Eucalyptus piperita</i>	Remove
T-G108	Smooth-barked Apple	<i>Angophora costata</i>	Remove
T-G109	Black She-oak	<i>Allicosuarina littoralis</i>	Remove
T-G110	Sydney Peppermint	<i>Eucalyptus piperita</i>	Remove
T-G111	Smooth-barked Apple	<i>Angophora costata</i>	Remove
T-G112	Red Mahogany	<i>Eucalyptus resinifera</i>	Remove
T-G113	Smooth-barked Apple	<i>Angophora costata</i>	Remove
T-G114	Red Mahogany	<i>Eucalyptus resinifera</i>	Remove
T-G115	Sydney Peppermint	<i>Eucalyptus piperita</i>	Remove
T-G116	Red Mahogany	<i>Eucalyptus resinifera</i>	Remove
T-G117	Smooth-barked Apple	<i>Angophora costata</i>	Remove
T-G118	Smooth-barked Apple	<i>Angophora costata</i>	Remove
T-G119	Red Mahogany	<i>Eucalyptus resinifera</i>	Remove
T-G120	Sydney Peppermint	<i>Eucalyptus piperita</i>	Remove
T-G121	Red Bloodwood	<i>Corymbia gummifera</i>	Remove
T-G122	Smooth-barked Apple	<i>Angophora costata</i>	Remove
T-G123	Dead Stag	<i>Dead Stag</i>	Remove
T-G124	Smooth-barked Apple	<i>Angophora costata</i>	Remove
T-L001	Blackbutt	<i>Eucalyptus pilularis</i>	Remove
T-L002	Smooth-barked Apple	<i>Angophora costata</i>	Remove
T-L003	Broad-leaved White Mahogany	<i>Eucalyptus umbra</i>	Remove
T-L004	Smooth-barked Apple	<i>Angophora costata</i>	Remove
T-L005	Smooth-barked Apple	<i>Angophora costata</i>	Remove
T-L006	Smooth-barked Apple	<i>Angophora costata</i>	Remove
T-L007	Broad-leaved White Mahogany	<i>Eucalyptus umbra</i>	Remove
T-L008	Broad-leaved White Mahogany	<i>Eucalyptus umbra</i>	Remove
T-L009	Dead Stag	Dead stag	Remove
T-L010	Smooth-barked Apple	<i>Angophora costata</i>	Remove
T-L011	Smooth-barked Apple	<i>Angophora costata</i>	Remove
T-L012	Dead Stag	Dead stag	Remove
T-L013	Smooth-barked Apple	<i>Angophora costata</i>	Remove
T-L014	Red Mahogany	<i>Eucalyptus resinifera</i>	Remove
T-L015	Smooth-barked Apple	<i>Angophora costata</i>	Remove
T-L016	Green Wattle	<i>Acacia irrorata</i>	Remove
T-L017	Smooth-barked Apple	<i>Angophora costata</i>	Remove
T-L018	Broad-leaved White Mahogany	<i>Eucalyptus umbra</i>	Remove
T-L019	Cheese Tree	<i>Glochidion ferdinandi</i>	Remove
T-L020	Black She-oak	<i>Allicosuarina littoralis</i>	Remove
T-L021	Dead Stag	Dead Stag	Remove
T-L022	Red Mahogany	<i>Eucalyptus resinifera</i>	Remove
T-L023	Hickory Wattle	<i>Acacia implexa</i>	Remove
T-L024	Smooth-barked Apple	<i>Angophora costata</i>	Remove
T-L025	Large-leaved Privet	<i>Ligustrum lucidum</i>	Remove
T-L026	Large-leaved Privet	<i>Ligustrum lucidum</i>	Retain
T-L027	Small-leaved Privet	<i>Ligustrum sinense</i>	Retain
T-L028	Black Locust	<i>Gleditsea tricanthos</i>	Remove
T-L029	Black Locust	<i>Gleditsea tricanthos</i>	Retain
T-L030	Large-leaved Privet	<i>Ligustrum lucidum</i>	Retain
T-L031	Large-leaved Privet	<i>Ligustrum lucidum</i>	Remove
T-L032	Smooth-barked Apple	<i>Angophora costata</i>	Retain
T-L033	Cheese Tree	<i>Glochidion ferdinandi</i>	Retain
T-L034	Port Jackson Fig	<i>Ficus rubiginosa</i>	Remove
T-L035	Dead Stag	Dead Stag	Retain
T-L036	Smooth-barked Apple	<i>Angophora costata</i>	Remove
T-L037	Camphor Laurel	<i>Cinnamomum camphora</i>	Retain
T-L038	Cheese Tree	<i>Glochidion ferdinandi</i>	Retain
T-L039	Smooth-barked Apple	<i>Angophora costata</i>	Retain
T-L040	Smooth-barked Apple	<i>Angophora costata</i>	Retain
T-L041	Camphor Laurel	<i>Cinnamomum camphora</i>	Retain
T-L042	Red Bloodwood	<i>Corymbia gummifera</i>	Retain
T-r001	Smooth-barked Apple	<i>Angophora costata</i>	Retain
T-r002	River Sheoak	<i>Casuarina cunninghamiana</i>	Remove
T-r003	River Sheoak	<i>Casuarina cunninghamiana</i>	Remove
T-r004	River Sheoak	<i>Casuarina cunninghamiana</i>	Remove
T-r005	Swamp Oak	<i>Casuarina glauca</i>	Remove

Drawing Title:  
Existing Tree Plan & Tree Data Table

DWG No:  
LDA-05

GEOSCAPHES

LANDSCAPE ARCHITECTS

Suite 215, 284 Victoria Av. Chatswood NSW 2067 Ph. (02) 9411 1485  
www.geoscapes.com.au ABN 84 620 205 781 ACN 620 205 781  
Registered Landscape Architect #5868

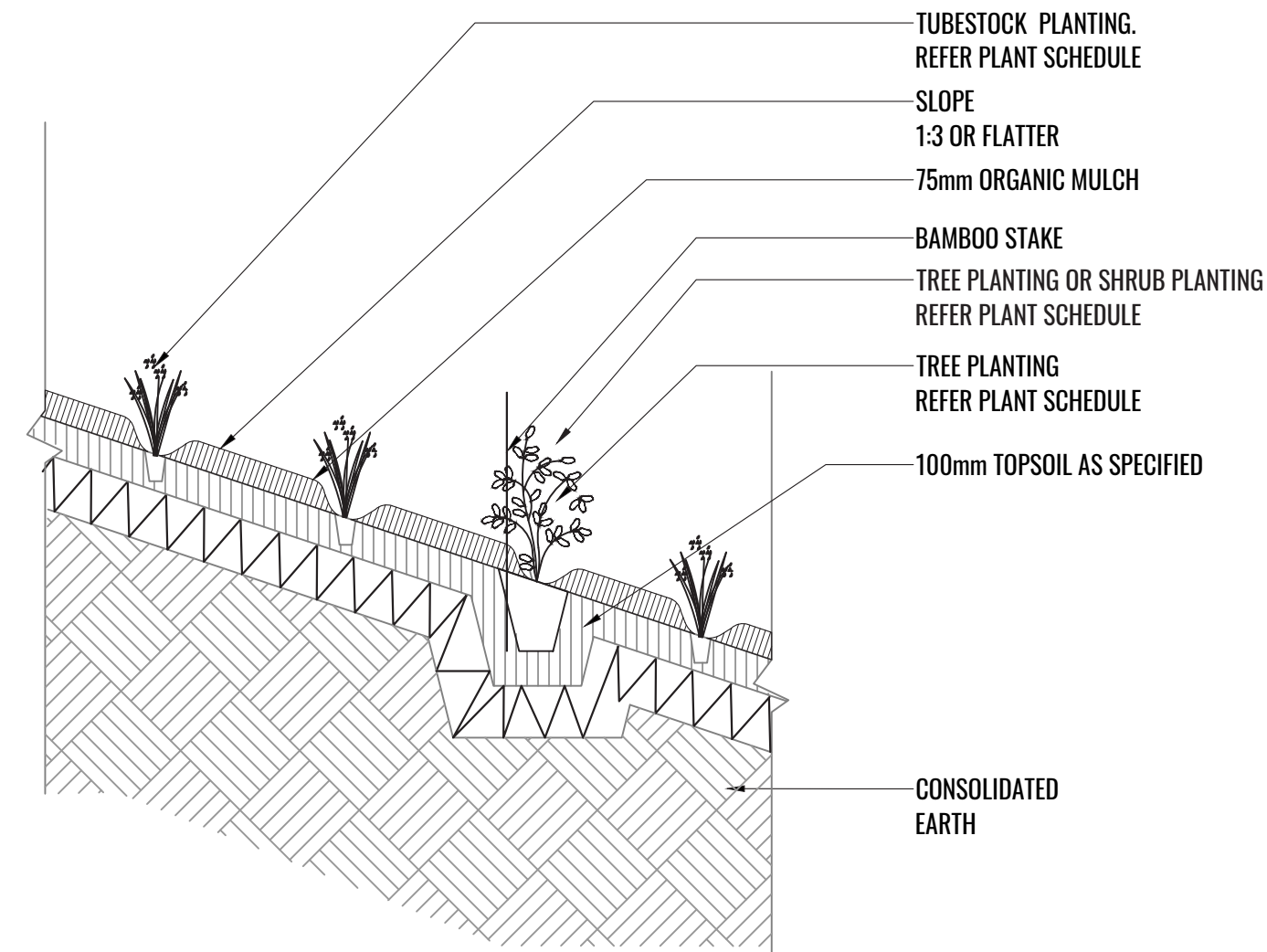
Client:

GREENBOX

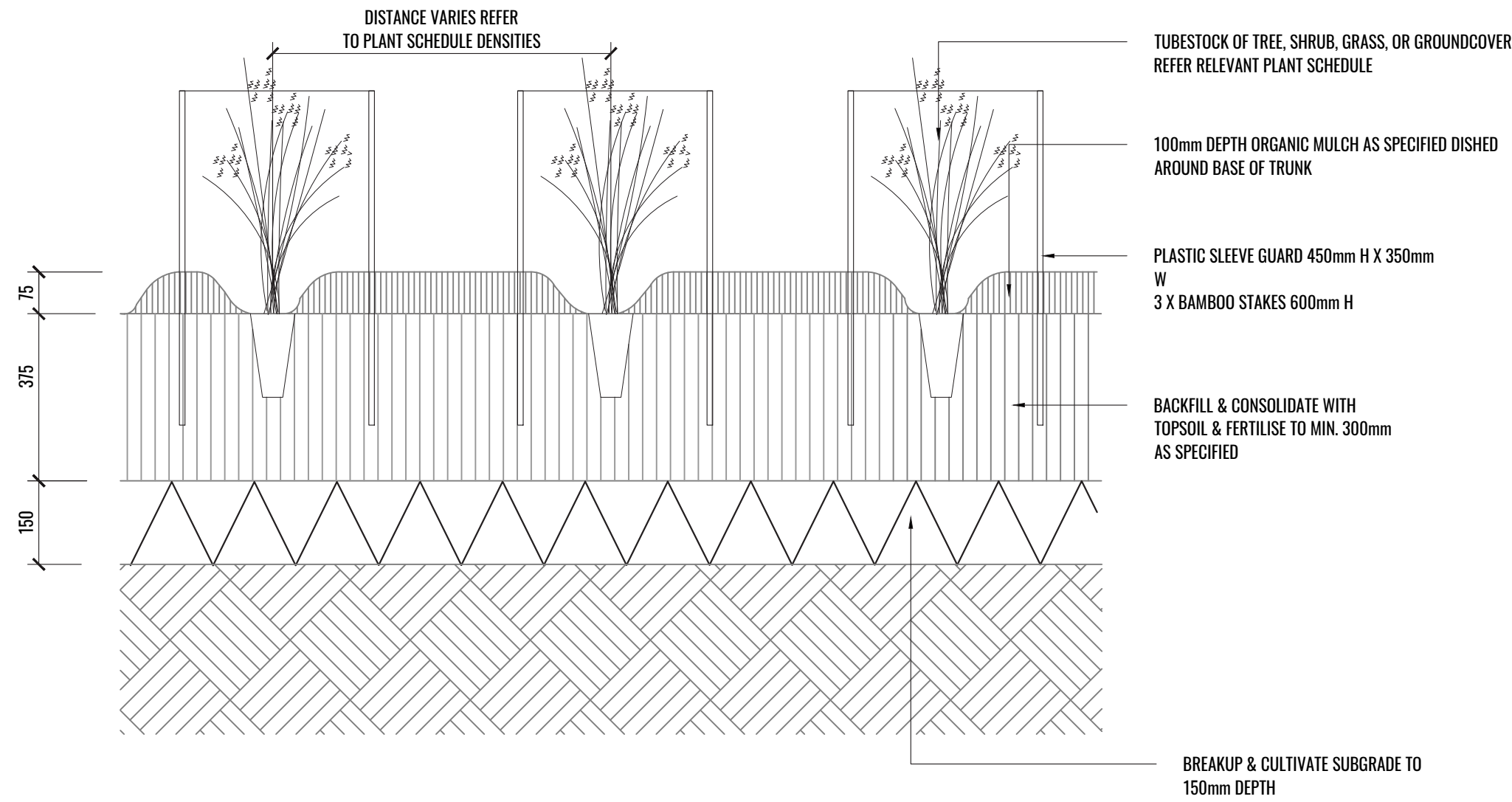
Scale: 1:625 @ A1 1:1000 @ A3	Date: 26.08.19	Job Number: 181108	North: 
Project:	Proposed Data Centre Lane Cove West NSW 2066		

Revision		FOR DEVELOPMENT APPROVAL		
Rev	Date	Description	Drawn	Checked
C	26.08.19	FOR SSD SUBMISSION	SW	BG
B	03.07.19	FOR SSD SUBMISSION	SW	BG
A	18.12.18	FOR SSD SUBMISSION	CC	BG

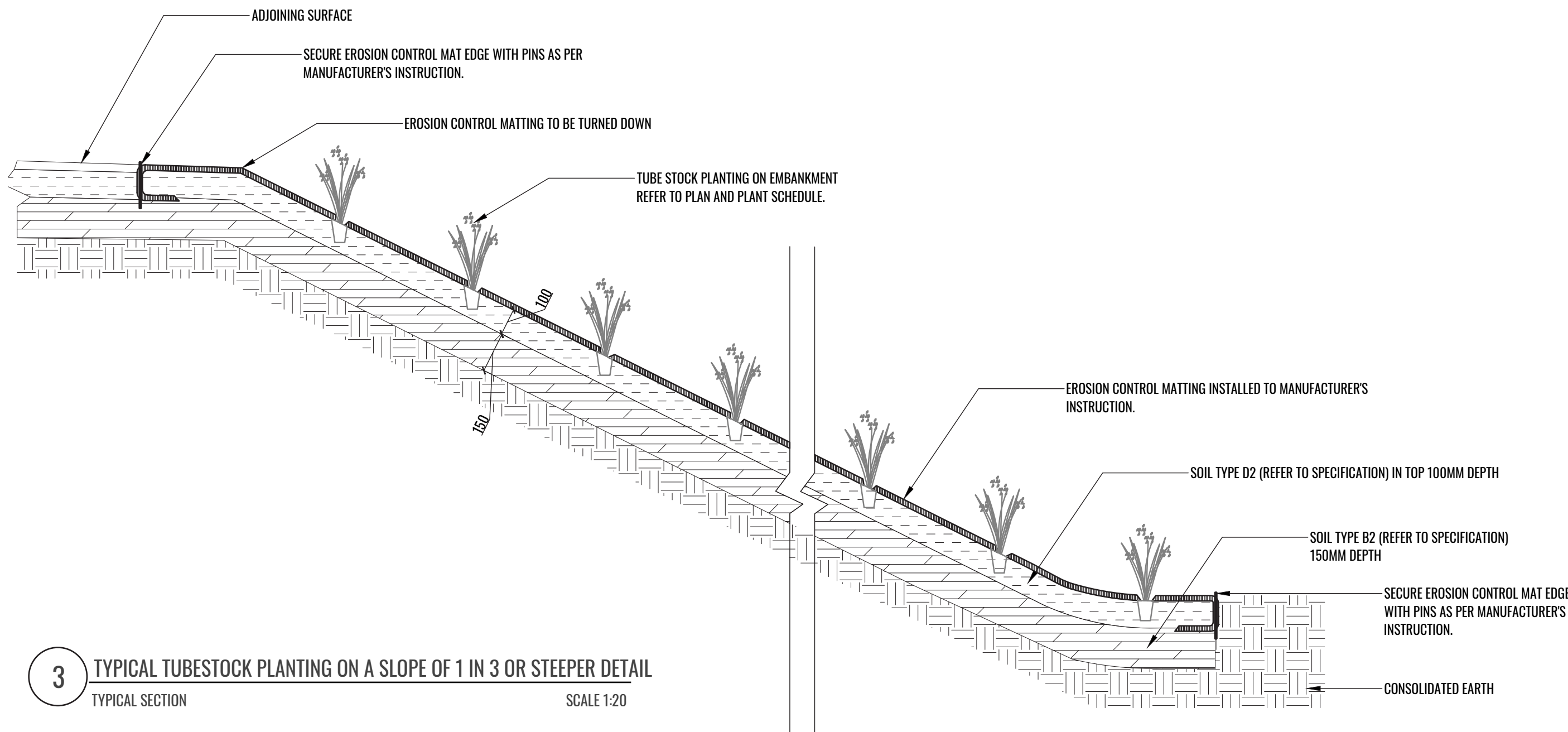




1 TYPICAL TUBESTOCK PLANTING DETAIL ON 1:4 GRADE OR FLATER  
TYPICAL SECTION SCALE 1:20



2 TYPICAL TUBESTOCK REVEGETATION PLANTING DETAIL IN NON CONTAMINATED AREAS  
TYPICAL SECTION SCALE 1:10



3 TYPICAL TUBESTOCK PLANTING ON A SLOPE OF 1 IN 3 OR STEEPER DETAIL  
TYPICAL SECTION SCALE 1:20

## Typical Specifications

### General

Maintenance shall mean the care and maintenance of the landscape works by accepted horticultural practice as rectifying any defects that become apparent in the landscape works under normal use. The landscape contractor shall attend the site on a weekly basis to maintain the landscape works for the term of the maintenance period commencing from practical completion.

### Standards

All grown or purchased plant stock must conform to all the conditions and requirements given in NATSPEC Guide: Specifying Trees. Soils to be in accordance with AS4419, mulching composts and conditioners to be in accordance with AS4454. Soils should conform to best practice specifications as listed in the Landscape Soils Handbook (Simon Leake & Elke Haege 2017).

### Rubbish Removal

During the term of the maintenance period the Landscape Contractor shall undertake rubbish removal from the site on a weekly basis to ensure the site remains in tidy condition.

### Weed Eradication

Weed growth that may occur in grassed, planted or mulched areas is to be removed using environmentally acceptable methods i.e. non-residual glyphosate herbicide (e.g. 'Roundup', applied in accordance with the manufacturer's directions).

### Tree Replacement

Trees shall show signs of healthy vigorous growth and be free from disease and not exhibit signs of stress prior to handover to the client. Any trees or plant that die or fail to thrive, or are damaged or stolen will be replaced. Replacement material shall have the maintenance period extended in accordance with the landscape contract conditions. Trees and plant materials shall be equal to the minimum requirements of species specified and approved material delivered to site. Should the condition decline from the approved sample the Superintendent reserves the right to reject the tree / plants.

Frequency: as required.

### Stakes

Adjust and/or replace stakes and ties where required. Remove staking and guying when instructed by the Superintendent

### Pruning

Selective pruning may be required during the establishment period to promote a balanced canopy structure. These activities shall be carried out to the best horticultural and industry practice. All pruned material is to be removed from site.

### Mulched Surfaces

All planter beds and garden areas shall have a minimum depth of 75mm Forest Fines mulch. All mulch is to be free of deleterious matter such as soil, weeds and sticks. Mulched surfaces are to be kept clean and tidy and free of any deleterious material and foreign matter. Reinstate depths to a uniform level of 75mm with mulch as specified, mulch to be free of any wood material impregnated with CCA or similar toxic treatment. Top up mulch levels prior to handover to client.

### Watering

Implement an appropriate hand watering regime in areas not irrigated in association with current watering programme to maintain plant health and vigour. The program shall reflect seasonal conditions and plant species.

Frequency: Weekly or as required.

### Pest and Disease Control

The Landscape Contractor shall spray for pests and disease infestations when the pest and fungal attack has been positively identified and when their populations have increased to a point that will become detrimental to plant growth. Apply all pesticides to manufacturer's directions.

Frequency: weekly inspection

### Fertilising

Generally check for signs of nutrient deficiencies (yellowing of leaves, failure to thrive), and adapt fertiliser regime to suit. Fertiliser should be applied at the beginning and the end of the (summer) growing season.

### Bushfire (Refer to Bushfire Report)

Inner Protection Area (IPA) Fuel loads within the IPA are to be maintained so it does not exceed 4t/ha. Trees are to be maintained to ensure: canopy cover does not exceed 15%; trees (at maturity) do not touch or overhang the building; tree canopies (at maturity) should be well spread out and not form a continuous canopy; lower limbs should be removed up to a height of 2m above ground; preference should be given to smooth barked and evergreen trees. Shrubs are to be maintained to ensure: large discontinuities or gaps in vegetation; shrubs should not be located under trees; shrubs should not form more than 10% of ground cover; clumps of shrubs should be separated from exposed windows and doors by a distance of at least twice the height of vegetation.

Grass is to be maintained to ensure: A height of 10cm or less; leaves and debris is removed.

### VEGETATION MANAGEMENT PLAN

Refer to VMP prepared by TRAVERS BUSHFIRE & ECOLOGY.

Drawing Title:  
**Typical Landscape Details & Specifications**

DWG No:

**LDA-06**

**GEOSCAPES**  
LANDSCAPE ARCHITECTS  
Suite 215, 284 Victoria Av. Chatswood NSW 2067 Ph. (02) 9411 1485  
www.geoscapes.com.au ABN 84 620 205 781 ACN 620 205 781  
**Registered Landscape Architect #5868**

Client:

**GREENBOX**

Scale:	Date:	Job Number:	North:	Revision					FOR DEVELOPMENT APPROVAL	
AS SHOWN	26.08.19	181108	N/A	Rev	Date	Description	Drawn	Checked		
Project:				C	26.08.19	FOR SSD SUBMISSION	SW	BG		
				B	03.07.19	FOR SSD SUBMISSION	SW	BG		
				A	18.12.18	FOR SSD SUBMISSION	GC	BG		
Proposed Data Centre										
Lane Cove West NSW 2066										



PROPOSED GENERAL LANDSCAPE AND APZ PLANTING						
CODE	BOTANICAL NAME	COMMON NAME	MATURE HEIGHT	SIZE	PLANTING DENSITY	QTY*
	Canopy trees					
ANG COS	<i>Angophora costata</i>	<i>Sydney Red Gum</i>	20m	AS PER VMP	As Shown	6
COR GUM	<i>Corymbia gummifera</i>	<i>Red Bloodwood</i>	30m	AS PER VMP	As Shown	4
EUC RES	<i>Eucalyptus resinifera</i>	<i>Red Mahogany</i>	25m	AS PER VMP	As Shown	3
SYN GLO	<i>Syncarpia glomulifera</i>	<i>Turpentine tree</i>	25m	AS PER VMP	As Shown	3
	Sub-canopy trees					
ACA PAR	<i>Acacia parramattensis</i>	<i>Parramatta Wattle</i>	12m	AS PER VMP	As Shown	10
ALL LIT	<i>Allocasuarina littoralis</i>	<i>Black Sheoak</i>	10m	AS PER VMP	As Shown	9
ELA ret	<i>Elaeocarpus reticulatus</i>	<i>Blueberry Ash</i>	10m	AS PER VMP	As Shown	6
MEL LIN	<i>Melaleuca linariifolia</i>	<i>Snow in Summer</i>	8m	AS PER VMP	As Shown	10
	Shrubs 1 per 30m2					
ACA flo	<i>Acacia floribunda</i>	<i>Sally Wattle</i>	6m	AS PER VMP	As Shown	49
BRE obl	<i>Breynia oblongifolia</i>	<i>Coffee Bush</i>	6m	AS PER VMP	As Shown	34
BUR spi	<i>Bursaria spinosa subsp. spinosa</i>	<i>Blackthorn</i>	6m	AS PER VMP	As Shown	33
DOD tri	<i>Dodonaea triquetra</i>	<i>Common Hop Bush</i>	2m	AS PER VMP	As Shown	36
KUN amb	<i>Kunzea ambigua</i>	<i>Tick Bush</i>	2m	AS PER VMP	As Shown	35
MEL thy	<i>Melaleuca thymifolia</i>	<i>Thyme Honey myrtle</i>	2m	AS PER VMP	As Shown	33
TRE tom	<i>Trema tomentosa</i>	<i>Native peach</i>	2m	AS PER VMP	As Shown	26
	Groundcovers 4 per 1m2					
BLE car	<i>Blechnum cartilagineum</i>	<i>Gristle Fern</i>	0.4m	AS PER VMP	As per VMP	271
CEN asi	<i>Centella asiatica</i>	<i>Asiatic pennywort</i>	0.2m	AS PER VMP	As per VMP	2086
COM cya	<i>Commelina cyanea</i>	<i>Scurvy weed</i>	1m	AS PER VMP	As per VMP	2086
DIP var	<i>Dipodium variegatum</i>	<i>Blotched hyacinth orchid</i>	1m	AS PER VMP	As per VMP	2294
ECH cae	<i>Echinopogon caespitosus</i>	<i>Hedgehog Grass</i>	0.75m	AS PER VMP	As per VMP	2294
ENT mar	<i>Entolasia marginata</i>	<i>Panic Grass</i>	0.3m	AS PER VMP	As per VMP	2149
ENT str	<i>Entolasia stricta</i>	<i>Right angled grass</i>	0.8m	AS PER VMP	As per VMP	2149
IMP cyl	<i>Imperata cylindrica</i>	<i>Cogongrass</i>	0.6m	AS PER VMP	As per VMP	2439
JUN usi	<i>Juncus usitatus</i>	<i>Common Rush</i>	0.6m	AS PER VMP	As per VMP	2439
LOM lon	<i>Lomandra longifolia</i>	<i>Spiny Head mat rush</i>	0.8m	AS PER VMP	As per VMP	145
MIC sti	<i>Microlaena stipoides</i>	<i>Weeping Grass</i>	0.8m	AS PER VMP	As per VMP	2439
OPL aem	<i>Oplismenus aemulus</i>	<i>Basket grass</i>	0.3m	AS PER VMP	As per VMP	2086
OPL imb	<i>Oplismenus imbecillis</i>	<i>Basket grass</i>	0.3m	AS PER VMP	As per VMP	2086
THE tri	<i>Themeda triandra</i>	<i>Kangaroo Grass</i>	0.7m	AS PER VMP	As per VMP	2411

SMOOTH-BARKED APPLE - RED BLOODWOOD OPEN FOREST						
CODE	BOTANICAL NAME	COMMON NAME	MATURE HEIGHT	SIZE	PLANTING DENSITY	QTY*
	Shrubs 1 per 5m2					
ACA lin	<i>Acacia linifolia</i>	<i>White Wattle</i>	5m	AS PER VMP	As Shown	25
ACA lon	<i>Acacia longifolia</i>	<i>Sydney golden wattle</i>	8m	AS PER VMP	As Shown	25
BRE obo	<i>Breynia oblongifolia</i>	<i>Coffee Bush</i>	6m	AS PER VMP	As Shown	25
DOD tri	<i>Dodonaea triquetra</i>	<i>Common Hop Bush</i>	2m	AS PER VMP	As Shown	25
GRE bux	<i>Grevillea buxifolia</i>	<i>Grey spider flower</i>	2m	AS PER VMP	As Shown	25
GRE ser	<i>Grevillea sericea</i>	<i>Silky Grevillea</i>	2m	AS PER VMP	As Shown	25
KUN amb	<i>Kunzea ambigua</i>	<i>Tick Bush</i>	3m	AS PER VMP	As Shown	25
LEP tri	<i>Leptospermum trinervium</i>	<i>Paperbark Teatree</i>	2m	AS PER VMP	As Shown	25
LEP pol	<i>Leptospermum polygalifolium</i>	<i>Tantoon</i>	3m	AS PER VMP	As Shown	25
OZO dio	<i>Ozothamnus diosmifolius</i>	<i>Rice flower</i>	2m	AS PER VMP	As Shown	25
PER pin	<i>Persoonia pinifolia</i>	<i>Pine leaved Geebung</i>	3m	AS PER VMP	As Shown	25
PER lin	<i>Persoonia linearis</i>	<i>Narrow leaved Geebung</i>	5m	AS PER VMP	As Shown	25
WOO pun	<i>Woolisia pungens</i>	<i>Snow Wreath</i>	2m	AS PER VMP	As Shown	25
ZIE pil	<i>Zieria pilosa</i>	<i>Hairy Zieria</i>	1.5m	AS PER VMP	As Shown	25
	Groundcovers 4 per 1m2					
ARI vag	<i>Aristida vagans</i>	<i>Threeawn speargrass</i>	0.80m	AS PER VMP	As per VMP	580
AUS pub	<i>Austrostipa pubescens</i>	<i>Speargrass</i>	1.0m	AS PER VMP	As per VMP	580
BLE car	<i>Blechnum cartilagineum</i>	<i>Gristle fern</i>	1.0m	AS PER VMP	As per VMP	580
CEN asi	<i>Centella asiatica</i>	<i>Asiatic pennywort</i>	0.2m	AS PER VMP	As per VMP	543
DIA cae	<i>Dianella caerulea</i>	<i>Blue flax Lily</i>	0.5m	AS PER VMP	As per VMP	580
DIP var	<i>Dipodium variegatum</i>	<i>Blotched hyacinth orchid</i>	1.0m	AS PER VMP	As per VMP	543
ENT str	<i>Entolasia stricta</i>	<i>Right angled grass</i>	0.8m	AS PER VMP	As per VMP	543
IMP cyl	<i>Imperata cylindrica</i>	<i>Cogongrass</i>	0.6m	AS PER VMP	As per VMP	543
LOM lon	<i>Lomandra longifolia</i>	<i>Spiny head Mat rush</i>	0.8m	AS PER VMP	As per VMP	580
MIC sti	<i>Microlaena stipoides</i>	<i>Weeping Grass</i>	0.8m	AS PER VMP	As per VMP	543
OPL aem	<i>Oplismenus aemulus</i>	<i>Basket grass</i>	0.3m	AS PER VMP	As per VMP	543
OPL imb	<i>Oplismenus imbecillis</i>	<i>Basket grass</i>	0.3m	AS PER VMP	As per VMP	543
THE tri	<i>Themeda triandra</i>	<i>Kangaroo Grass</i>	0.7m	AS PER VMP	As per VMP	580

SWAMP OAK FLOODPLAIN FOREST						
CODE	BOTANICAL NAME	COMMON NAME	MATURE HEIGHT	SIZE	PLANTING DENSITY	QTY*
	Shrubs 1 per 3m2					
BRE obl	<i>Breynia oblongifolia</i>	<i>Coffee Bush</i>	6m	AS PER VMP	As Shown	210
BUR spi	<i>Bursaria spinosa subsp. spinosa</i>	<i>Native Blackthorn</i>	3m	AS PER VMP	As Shown	210
DOD tri	<i>Dodonaea triquetra</i>	<i>Common Hop Bush</i>	5m	AS PER VMP	As Shown	210
MEL thy	<i>Melaleuca thymifolia</i>	<i>Thyme Honey myrtle</i>	2m	AS PER VMP	As Shown	210
TRE tom	<i>Trema tomentosa</i>	<i>Native peach</i>	1.5m	AS PER VMP	As Shown	210
	Groundcovers 6 per 1m2					
ARI vag	<i>Aristida vagans</i>	<i>Threeawn speargrass</i>	0.80m	AS PER VMP	As per VMP	1227
AUS pub	<i>Austrostipa pubescens</i>	<i>Speargrass</i>	1.0m	AS PER VMP	As per VMP	1227
BLE ind	<i>Blechnum indicum</i>	<i>Swamp water fern</i>	1.0m	AS PER VMP	As per VMP	1227
CEN asi	<i>Centella asiatica</i>	<i>Asiatic pennywort</i>	0.2m	AS PER VMP	As per VMP	1227
COM cya	<i>Commelina cyanea</i>	<i>Scurvy weed</i>	1m	AS PER VMP	As per VMP	1227
DIA cae	<i>Dianella caerulea</i>	<i>Blue flax Lily</i>	0.5m	AS PER VMP	As per VMP	1227
ECH cae	<i>Echinopogon caespitosus</i>	<i>Hedgehog Grass</i>	0.8m	AS PER VMP	As per VMP	1227
ENT mar	<i>Entolasia marginata</i>	<i>Panic Grass</i>	0.6m	AS PER VMP	As per VMP	1227
FIC nod	<i>Ficinia nodosa</i>	<i>Knobby club rush</i>	0.8m	AS PER VMP	As per VMP	1227
GAH cla	<i>Gahnia clarkei</i>	<i>Tall Sawsedge</i>	0.8m	AS PER VMP	As per VMP	1227
IMP cyl	<i>Imperata cylindrica</i>	<i>Cogongrass</i>	0.6m	AS PER VMP	As per VMP	1227
JUN usi	<i>Juncus usitatus</i>	<i>Common Rush</i>	0.6m	AS PER VMP	As per VMP	1227
LOM lon	<i>Lomandra longifolia</i>	<i>Spiny head Mat rush</i>	0.8m	AS PER VMP	As per VMP	1227
MIC sti	<i>Microlaena stipoides</i>	<i>Weeping Grass</i>	0.8m	AS PER VMP	As per VMP	1227
OPL imb	<i>Oplismenus imbecillis</i>	<i>Basket grass</i>	0.3m	AS PER VMP	As per VMP	1227
THE tri	<i>Themeda triandra</i>	<i>Kangaroo Grass</i>	0.7m	AS PER VMP	As per VMP	1227

Drawing Title:  
Planting Schedule

DWG No:

LDA-07

GEOSCAPES

LANDSCAPE ARCHITECTS

Suite 215, 284 Victoria Av. Chatswood NSW 2067 Ph. (02) 9411 1485  
www.geoscapes.com.au ABN 84 620 205 781 ACN 620 205 781  
Registered Landscape Architect #5868

Client:

GREENBOX

Scale: N/A	Date: 26.08.19	Job Number: 181108	North: N/A	RevisionFOR DEVELOPMENT APPROVAL				
Project:Proposed Data Centre Lane Cove West NSW 2066				Rev	Date	Description	Drawn	Checked
				C	26.08.19	FOR SSD SUBMISSION	SW	BG
				B	03.07.19	FOR SSD SUBMISSION	SW	BG
				A	18.12.18	FOR SSD SUBMISSION	GC	BG