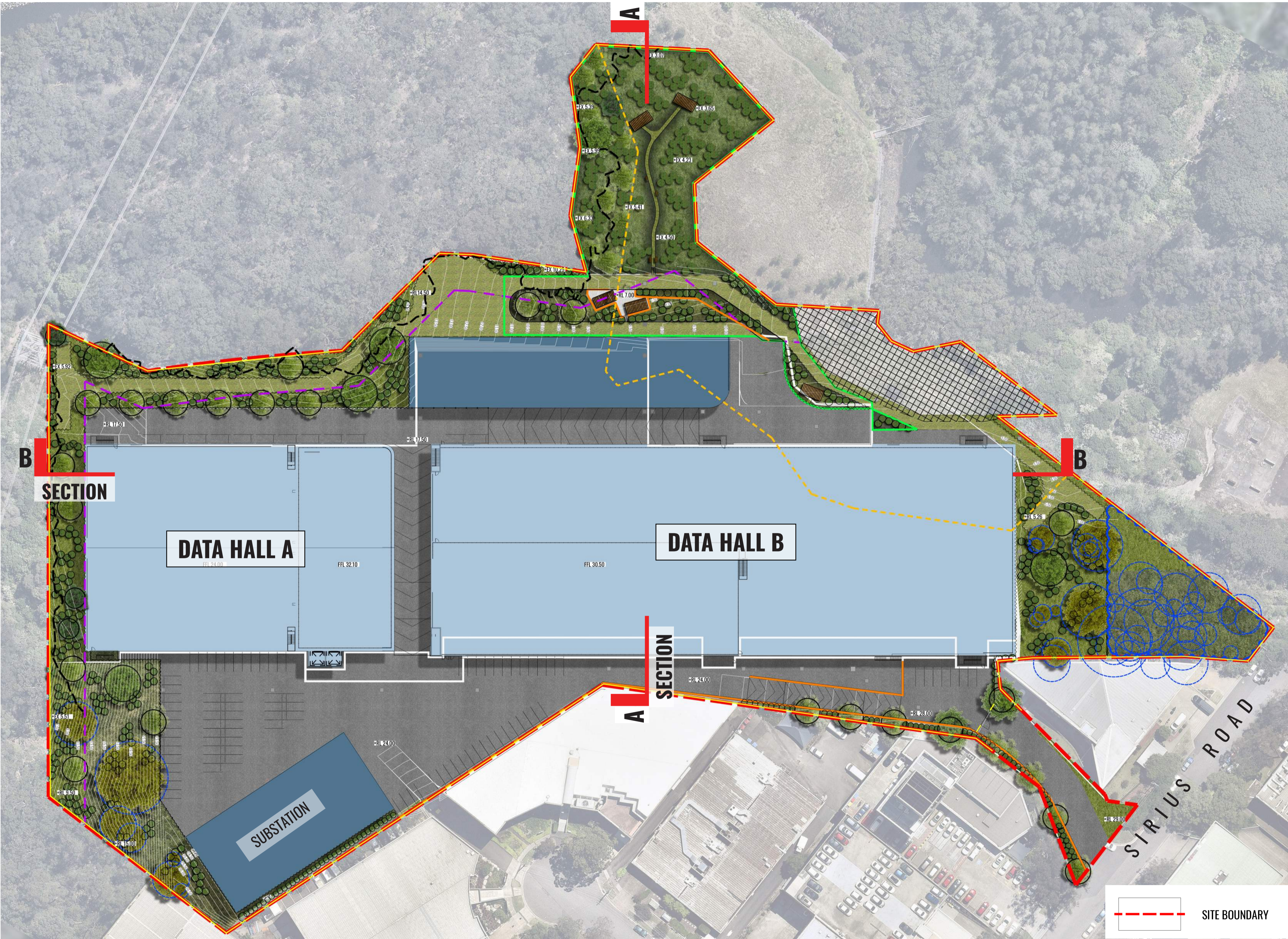


Proposed Data Centre Development

1 Sirius Road, Lane Cove West NSW 2066

Landscape Documentation For State Significant Development



Drawing Register:	
Dwg No.	Drawing Name
LDA-00	Cover Sheet
LDA-01	Landscape Masterplan
LDA-02	Landscape Detailed Plan
LDA-03	Landscape Sections: AA & BB
LDA-04	Landscape Deep Soil Plan
LDA-05	Existing Tree Plan & Tree Data Table
LDA-06	Typical Landscape Details & Specification
LDA-07	Planting Schedules & Images

Landscape Design Statement

The project at 1 Sirius Road, Lane Cove West, involves the development of a Data Centre within a development area of 3.9 ha. The site is accessed via an existing driveway from Sirius Road and is part of Lane Cove Business Park and zoned IN2 Light Industrial.

Landscaping design aims to provide the following:

- Adhering to the bushfire requirements.
- Preservation and retention of existing trees where possible.
- Strengthening local character with the use of local indigenous species.
- Provision of 10% of the site for Landscape Amenity for workers.
- To help screen and filter views of the development for users of the adjacent bushland and visual receptors within the wider context with tree and shrub planting.

Refer to Landscape Design Report LDR01 by Geoscapes for further design details.

NOTE:

LANDSCAPE PLANS ARE TO BE FULLY COORDINATED WITH ALL VMP REQUIREMENTS PRIOR TO CC STAGE.


Drawing Title:
Cover Sheet
DWG No:

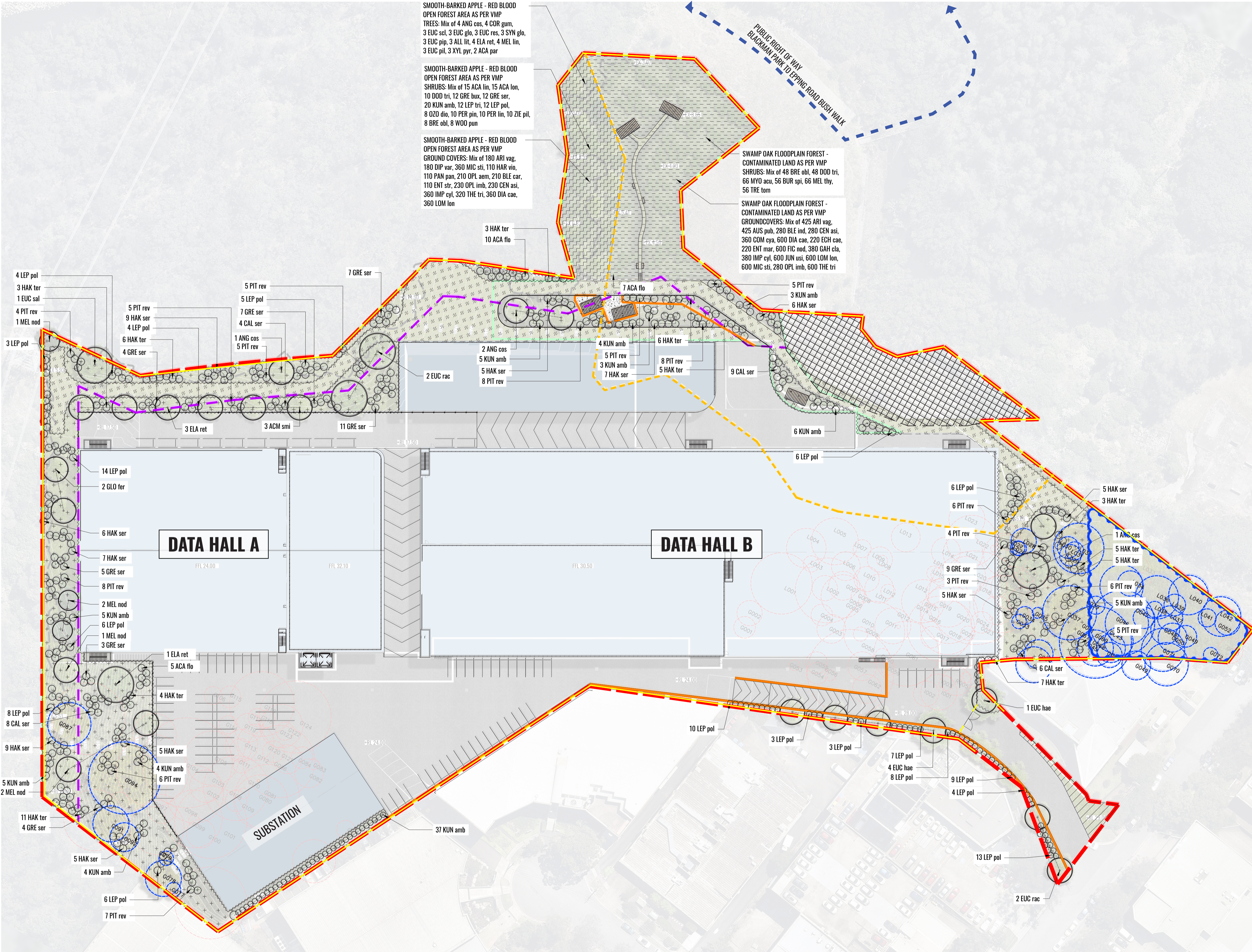
LDA-00

GEOSCAPES
LANDSCAPE ARCHITECTS
Suite 215, 284 Victoria Av. Chatswood NSW 2067 Ph. (02) 9411 1485
www.geoscapes.com.au ABN 84 620 205 781 ACN 620 205 781
Registered Landscape Architect #5868

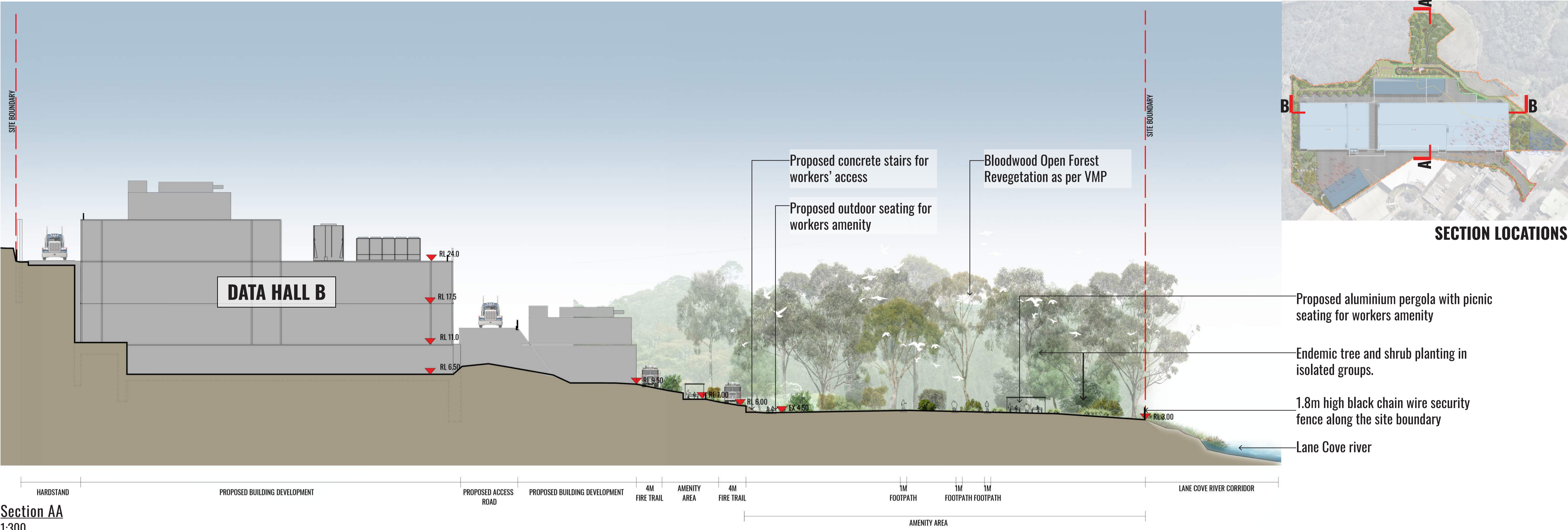
Client:

GREENBOX

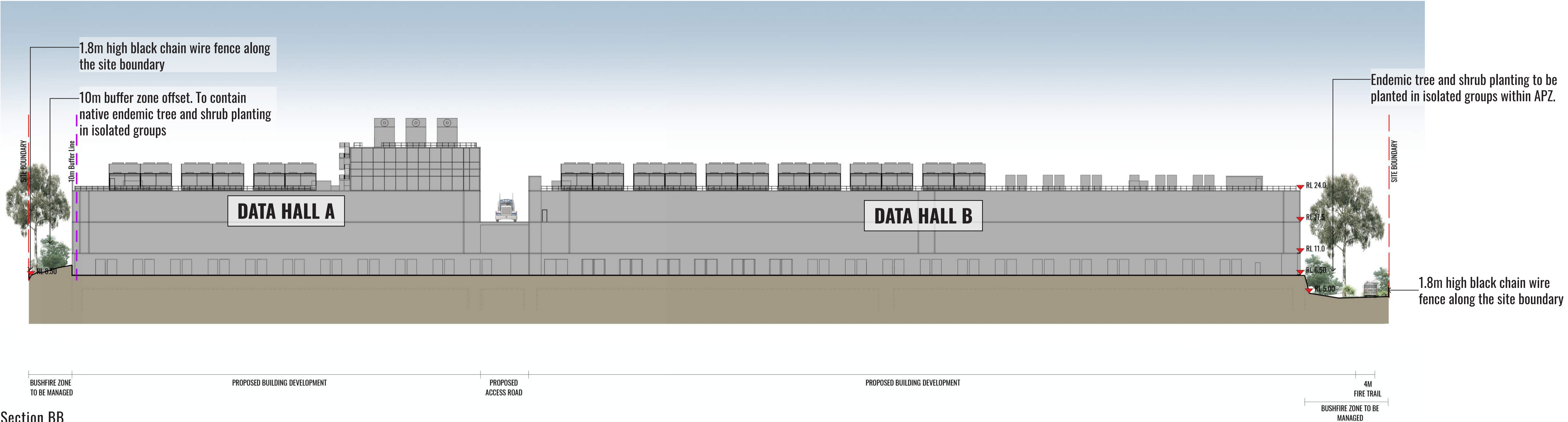
Scale: N/A	Date: 18.12.18	Job Number: 1801108	North: 	Revision						FOR DEVELOPMENT APPROVAL	
				Rev A	Date 18.12.18	Description FOR SSD SUBMISSION	Drawn CC	Checked BG			
Project:	Proposed Data Centre Lane Cove West NSW 2066										



LEGEND				
	SITE BOUNDARY			
	RETAINING WALL (REFER TO CIVIL ENGINEER'S DETAILS)			
	1.8M HIGH BLACK CHAIN WIRE SECURITY FENCE			
	EXISTING TREE TO BE RETAINED (REFER TO ARBORIST'S REPORT)			
	NATIVE ENDEMIC CANOPY TREE PLANTING (MAXIMUM 15% OF THE SITE AREA)			
	MIX OF INDIGENOUS SHRUB PLANTING (MAXIMUM 10% OF THE SITE AREA)			
	NATIVE GRASS SEED MIX (APZ) (TO BE MANAGED TO 100mm HIGH)			
	SMOOTH-BARKED APPLE - RED BLOODWOOD OPEN FOREST AS PER VMP			
	SWAMP OAK FLOODPLAIN FOREST - CONTAMINATED LAND AS PER VMP			
	FIRE TRAIL WITH VMP OR APZ PLANTING (TO BE MANAGED TO 100mm HIGH)			
	PROPOSED CONCRETE PAD TO AMENITY AREA			
	RE-VEGETATION RIPARIAN PLANTING TO VMP AND DPI REQUIREMENTS (REFERS TO TRAVERS BUSHFIRE & ECOLOGY)			
	BUSH REGENERATION AREA REFER TO VMP			
	EXISTING LANDSCAPE AREA TO BE RETAINED			
	10M BUFFER LINE FROM BUSH LAND			
	AREA OF CONTAMINATED LANDS			
	PICNIC SHELTERS AND SEATS			
	3 MEL nod — PLANTING CODES (REFER TO PLANT SCHEDULE)			



Section AA
1:300



Section BB
1:400

Drawing Title:
Landscape Sections - AA & BB

DWG No:

LDA-03

GEOSCAPES

LANDSCAPE ARCHITECTS

Suite 215, 284 Victoria Av. Chatswood NSW 2067 Ph. (02) 9411 1485

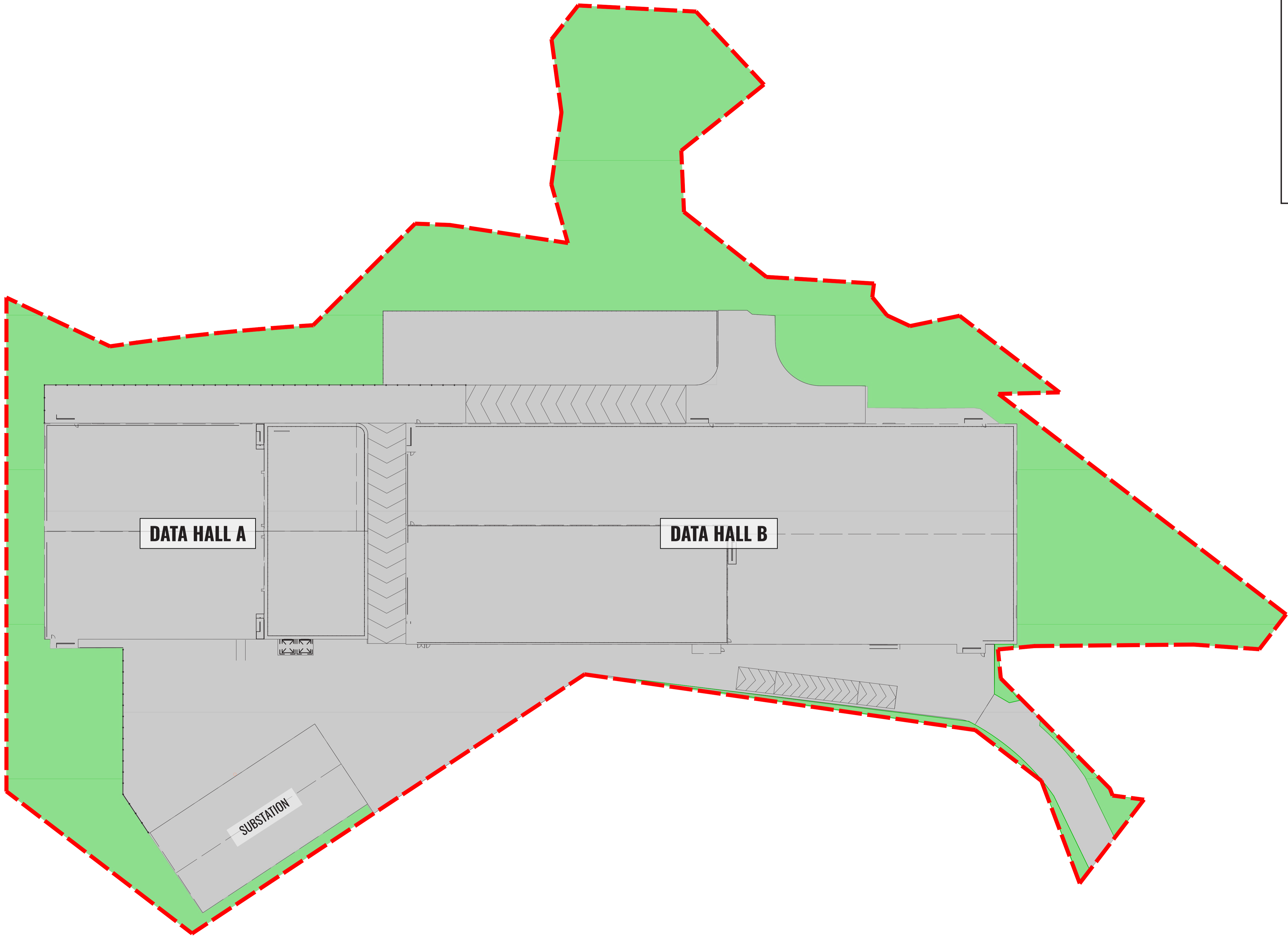
www.geoscapes.com.au ABN 84 620 205 781 ACN 620 205 781

Registered Landscape Architect #5868

Client:

GREENBOX

Scale: AS SHOWN	Date: 18.12.18	Job Number: 1801108	North: N/A	RevisionFOR DEVELOPMENT APPROVAL				
Project: Proposed Data Centre Lane Cove West NSW 2066				Rev	Date	Description	Drawn	Checked
				A	18.12.18	FOR SSD SUBMISSION	CC	BG



LEGEND

SITE BOUNDARY

BUILT UPON AREA

LANDSCAPE DEEP SOIL ZONE

TOTAL AREA: 39453 m²

LANDSCAPE DEEP SOIL AREA:

13060 m²

=33%

Drawing Title:
Landscape Deep Soil Plan

DWG No:

LDA-04

GEOSCAPES
LANDSCAPE ARCHITECTS

Suite 215, 284 Victoria Av. Chatswood NSW 2067 Ph. (02) 9411 1485
www.geoscapes.com.au ABN 84 620 205 781 ACN 620 205 781
Registered Landscape Architect #5868

Client:

GREENBOX

Scale:
1:500 @ A1
1:1000 @ A3

Date:
18.12.18

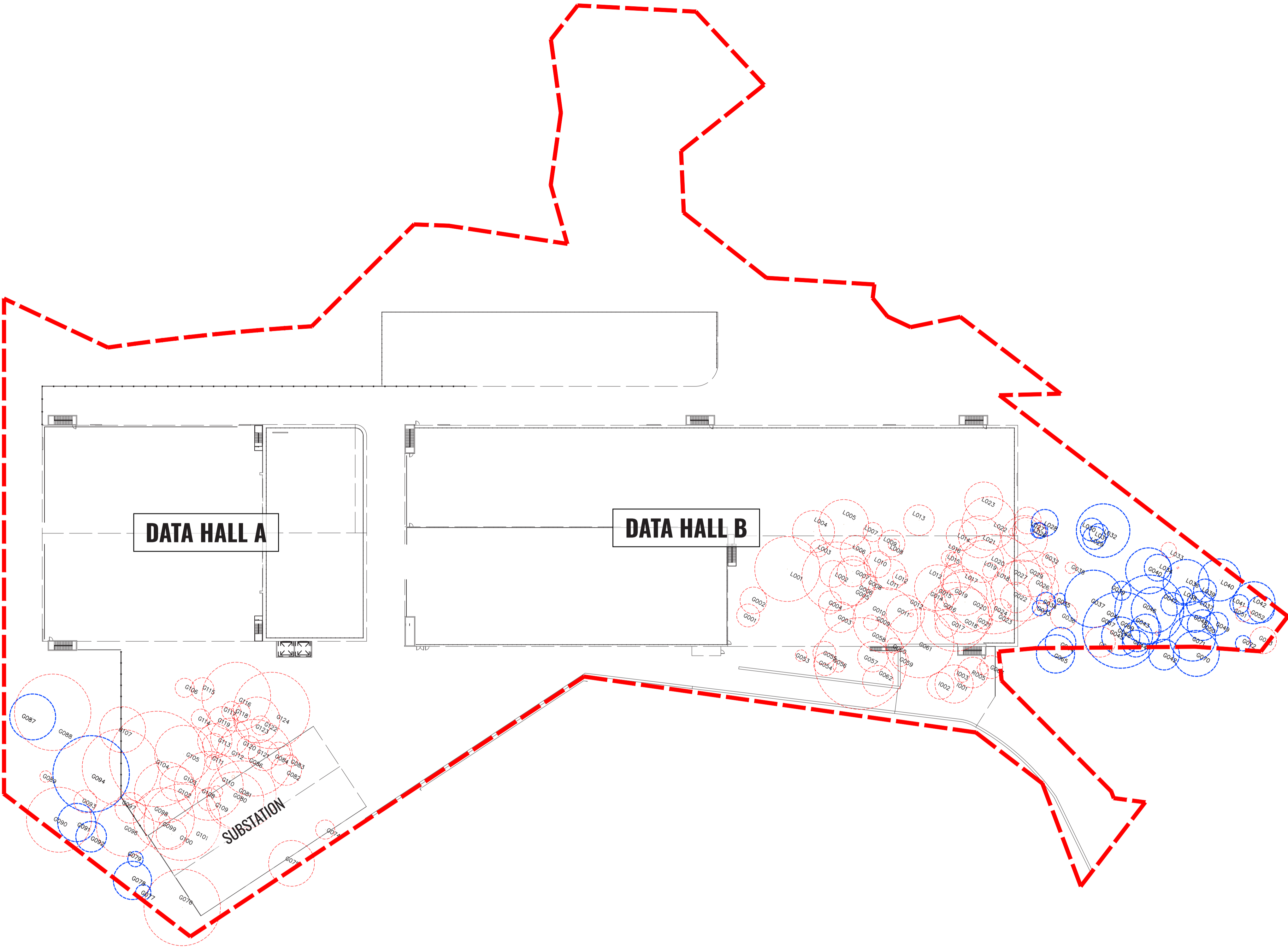
Job Number:
1801108

North:

Project:

Proposed Data Centre
Lane Cove West NSW 2066

Revision			FOR DEVELOPMENT APPROVAL	
Rev	Date	Description	Drawn	Checked
A	18.12.18	FOR SSD SUBMISSION	CC	BG



Tag No.	Common name	Scientific name	Ret/ Rem
T-G001	Camphor Laurel	Cinnamomum camphora	Remove
T-G002	Narrow-leaved Paperbark	Melaleuca linariifolia	Remove
T-G003	Red Bloodwood	Corymbia gummifera	Remove
T-G004	Smooth-barked Apple	Angophora costata	Remove
T-G005	Sydney Peppermint	Eucalyptus piperita	Remove
T-G006	Sydney Peppermint	Eucalyptus piperita	Remove
T-G007	Smooth-barked Apple	Angophora costata	Remove
T-G008	Smooth-barked Apple	Angophora costata	Remove
T-G009	Red Bloodwood	Corymbia gummifera	Remove
T-G010	Smooth-barked Apple	Angophora costata	Remove
T-G011	Dead Stag	Dead Stag	Remove
T-G012	Smooth-barked Apple	Angophora costata	Remove
T-G013	Dead Stag	Dead Stag	Remove
T-G014	Red Bloodwood	Corymbia gummifera	Remove
T-G015	Dead Stag	Dead Stag	Remove
T-G016	Parramatta Wattle	Acacia parramattensis	Remove
T-G017	Sydney Peppermint	Eucalyptus piperita	Remove
T-G018	Smooth-barked Apple	Angophora costata	Remove
T-G019	Black She-oak	Allocasuarina littoralis	Remove
T-G020	Smooth-barked Apple	Angophora costata	Remove
T-G021	Smooth-barked Apple	Angophora costata	Remove
T-G022	Cheese Tree	Glochidion ferdinandi	Remove
T-G023	Cheese Tree	Glochidion ferdinandi	Remove
T-G024	Dead Stag	Dead Stag	Remove
T-G025	Camphor Laurel	Cinnamomum camphora	Retain
T-G026	Dead Stag	Dead Stag	Remove
T-G027	Cheese Tree	Glochidion ferdinandi	Remove
T-G028	Cheese Tree	Glochidion ferdinandi	Remove
T-G029	Cheese Tree	Glochidion ferdinandi	Remove
T-G030	Red Mahogany	Eucalyptus resinifera	Remove
T-G031	Dead Stag	Dead Stag	Remove
T-G032	Dead Stag	Dead Stag	Remove
T-G033	Cheese Tree	Glochidion ferdinandi	Retain
T-G034	Dead Stag	Dead Stag	Remove
T-G035	Cheese Tree	Glochidion ferdinandi	Retain
T-G036	Camphor Laurel	Cinnamomum camphora	Remove
T-G037	Smooth-barked Apple	Angophora costata	Retain
T-G038	Dead Stag	Dead Stag	Remove
T-G039	Black She-oak	Allocasuarina littoralis	Retain
T-G040	Hard-leaved Scribbly Gum	Eucalyptus sclerophylla	Retain
T-G041	Hard-leaved Scribbly Gum	Eucalyptus piperita	Retain
T-G042	Cheese Tree	Glochidion ferdinandi	Retain
T-G043	Smooth-barked Apple	Angophora costata	Retain
T-G044	Red Mahogany	Eucalyptus resinifera	Retain
T-G045	Dead Stag	Dead Stag	Remove
T-G046	Smooth-barked Apple	Angophora costata	Retain
T-G047	Smooth-barked Apple	Angophora costata	Retain
T-G048	Smooth-barked Apple	Angophora costata	Retain
T-G049	Camphor Laurel	Cinnamomum camphora	Retain
T-G050	Cheese Tree	Glochidion ferdinandi	Retain
T-G051	Red Mahogany	Eucalyptus resinifera	Remove
T-G052	Camphor Laurel	Cinnamomum camphora	Retain
T-G053	Black She-oak	Allocasuarina littoralis	Remove
T-G054	Red Mahogany	Eucalyptus resinifera	Remove
T-G055	Red Mahogany	Eucalyptus resinifera	Remove
T-G056	Red Mahogany	Eucalyptus resinifera	Remove
T-G057	Sydney peppermint	Eucalyptus piperita	Remove
T-G058	Red bloodwood	Corymbia gummifera	Remove
T-G059	Parramatta Wattle	Acacia parramattensis	Remove
T-G060	Parramatta Wattle	Acacia parramattensis	Remove
T-G061	Sydney Peppermint	Eucalyptus piperita	Remove
T-G062	White Stringybark	Eucalyptus globoides	Remove
T-R005	Swamp Oak	Casuarina glauca	Remove
T-G063	Swamp Oak	Casuarina glauca	Remove
T-G064	Red Mahogany	Eucalyptus resinifera	Retain
T-G065	Red Mahogany	Eucalyptus resinifera	Retain
T-G066	Dead Stag	Dead Stag	Remove
T-G067	Smooth-barked Apple	Angophora costata	Retain
T-G068	Smooth-barked Apple	Angophora costata	Retain
T-G069	Red Mahogany	Eucalyptus resinifera	Retain
T-G070	Red Mahogany	Eucalyptus resinifera	Retain
T-G071	Red Mahogany	Eucalyptus resinifera	Retain
T-G072	Large-leaved Privet	Ligustrum lucidum	Retain
T-G073	Camphor Laurel	Cinnamomum camphora	Remove
T-G074	Hard-leaved Scribbly Gum	Eucalyptus sclerophylla	Remove
T-G075	Hard-leaved Scribbly Gum	Eucalyptus sclerophylla	Remove
T-G076	Hard-leaved Scribbly Gum	Eucalyptus sclerophylla	Remove
T-G077	Parramatta Wattle	Acacia parramattensis	Retain
T-G078	Red Mahogany	Eucalyptus resinifera	Retain
T-G079	Smooth-barked Apple	Angophora costata	Retain
T-G080	Smooth-barked Apple	Angophora costata	Remove
T-G081	Smooth-barked Apple	Angophora costata	Remove
T-G082	Smooth-barked Apple	Angophora costata	Remove
T-G083	-	Eucalyptus sp.	Remove
T-G084	Dead Stag	Dead Stag	Remove
T-G085	Smooth-barked Apple	Angophora costata	Remove
T-G086	Smooth-barked Apple	Angophora costata	Remove
T-G087	White Stringybark	Eucalyptus globoides	Retain
T-G088	Sydney Peppermint	Eucalyptus piperita	Remove
T-G089	Smooth-barked Apple	Angophora costata	Remove
T-G090	Sydney Peppermint	Eucalyptus piperita	Remove
T-G091	Smooth-barked Apple	Angophora costata	Retain
T-G092	Smooth-barked Apple	Angophora costata	Retain
T-G093	Sydney Peppermint	Eucalyptus piperita	Remove
T-G094	Sydney Peppermint	Eucalyptus piperita	Retain

LEGEND

SITE BOUNDARY

EXISTING TREE TO BE REMOVED
(REFER TO ARBORIST'S REPORT)

EXISTING TREE TO BE RETAINED
(REFER TO ARBORIST'S REPORT)

T-G095	Sydney Peppermint	Eucalyptus piperita	Remove
T-G096	Smooth-barked Apple	Angophora costata	Remove
T-G097	Sydney Peppermint	Eucalyptus piperita	Remove
T-G098	Smooth-barked Apple	Angophora costata	Remove
T-G099	Sydney Peppermint	Eucalyptus piperita	Remove
T-G100	Smooth-barked Apple	Angophora costata	Remove
T-G101	Smooth-barked Apple	Angophora costata	Remove
T-G102	Smooth-barked Apple	Angophora costata	Remove
T-G103	Sydney Peppermint	Eucalyptus piperita	Remove
T-G104	Smooth-barked Apple	Angophora costata	Remove
T-G105	Sydney Peppermint	Eucalyptus piperita	Remove
T-G106	Sydney Peppermint	Eucalyptus piperita	Remove
T-G107	Sydney Peppermint	Eucalyptus piperita	Remove
T-G108	Smooth-barked Apple	Angophora costata	Remove
T-G109	Black She-oak	Allocasuarina littoralis	Remove
T-G110	Sydney Peppermint	Eucalyptus piperita	Remove
T-G111	Smooth-barked Apple	Angophora costata	Remove
T-G112	Red Mahogany	Eucalyptus resinifera	Remove
T-G113	Smooth-barked Apple	Angophora costata	Remove
T-G114	Red Mahogany	Eucalyptus resinifera	Remove
T-G115	Sydney Peppermint	Eucalyptus piperita	Remove
T-G116	Red Mahogany	Eucalyptus resinifera	Remove
T-G117	Smooth-barked Apple	Angophora costata	Remove
T-G118	Smooth-barked Apple	Angophora costata	Remove
T-G119	Red Mahogany	Eucalyptus resinifera	Remove
T-G120	Sydney Peppermint	Eucalyptus piperita	Remove
T-G121	Red Bloodwood	Corymbia gummifera	Remove
T-G122	Smooth-barked Apple	Angophora costata	Remove
T-G123	Dead Stag	Dead Stag	Remove
T-G124	Smooth-barked Apple	Angophora costata	Remove
T-L001	Blackbutt	Eucalyptus pilularis	Remove
T-L002	Smooth-barked Apple	Angophora costata	Remove
T-L003	Broad-leaved White Mahogany	Eucalyptus umbra	Remove
T-L004	Smooth-barked Apple	Angophora costata	Remove
T-L005	Smooth-barked Apple	Angophora costata	Remove
T-L006	Smooth-barked Apple	Angophora costata	Remove
T-L007	Broad-leaved White Mahogany	Eucalyptus umbra	Remove
T-L008	Broad-leaved White Mahogany	Eucalyptus umbra	Remove
T-L009	Dead Stag	Dead stag	Remove
T-L010	Smooth-barked Apple	Angophora costata	Remove
T-L011	Smooth-barked Apple	Angophora costata	Remove
T-L012	Dead Stag	Dead stag	Remove
T-L013	Smooth-barked Apple	Angophora costata	Remove
T-L014	Red Mahogany	Eucalyptus resinifera	Remove
T-L015	Smooth-barked Apple	Angophora costata	Remove
T-L016	Green Wattle	Acacia litorata	Remove
T-L017	Smooth-barked Apple	Angophora costata	Remove
T-L018	Broad-leaved White Mahogany	Eucalyptus umbra	Remove
T-L019	Cheese Tree	Glochidion ferdinandi	Remove
T-L020	Black She-oak	Allocasuarina littoralis	Remove
T-L021	Dead Stag	Dead Stag	Remove
T-L022	Red Mahogany	Eucalyptus resinifera	Remove
T-L023	Hickory Wattle	Acacia implexa	Remove
T-L024	Smooth-barked Apple	Angophora costata	Remove
T-L025	Large-leaved Privet	Ligustrum lucidum	Retain
T-L026	Large-leaved Privet	Ligustrum lucidum	Retain
T-L027	Small-leaved Privet	Ligustrum sinense	Remove
T-L028	Black Locust	Gleditsea tricanthos	Retain
T-L029	Black Locust	Gleditsea tricanthos	Retain
T-L030	Large-leaved Privet	Ligustrum lucidum	Retain
T-L031	Large-leaved Privet	Ligustrum lucidum	Retain
T-L032	Smooth-barked Apple	Angophora costata	Retain
T-L033	Cheese Tree	Glochidion ferdinandi	Remove
T-L034	Port Jackson Fig	Ficus rubiginosa	Retain
T-L035	Dead Stag	Dead Stag	Remove
T-L036	Smooth-barked Apple	Angophora costata	Retain
T-L037	Camphor Laurel	Cinnamomum camphora	Retain
T-L038	Cheese Tree	Glochidion ferdinandi	Retain
T-L039	Smooth-barked Apple	Angophora costata	Retain
T-L040	Smooth-barked Apple	Angophora costata	Retain
T-L041	Camphor Laurel	Cinnamomum camphora	Retain
T-L042	Red Bloodwood	Corymbia gummifera	Retain
T-R001	Smooth-barked Apple	Angophora costata	Remove
T-R002	River Sheoak	Casuarina cunninghamiana	Remove
T-R003	River Sheoak	Casuarina cunninghamiana	Remove
T-R004	River Sheoak	Casuarina cunninghamiana	Remove

Drawing Title:
Existing Tree Plan & Tree Data Table

DWG No:

GEOSCAPES

LANDSCAPE ARCHITECTS

Suite 215, 284 Victoria Av. Chatswood NSW 2067 Ph. (02) 9411 1485
www.geoscapes.com.au ABN 84 620 205 781 ACN 620 205 781
Registered Landscape Architect #5868

Client:

GREENBOX

Scale: 1:625 @ A1
1:1000 @ A3

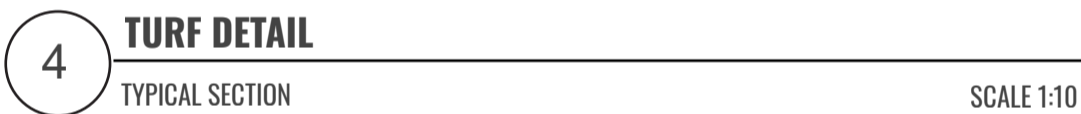
Date: 18.12.18

Job Number: 1801108

North:

Project: Proposed Data Centre
Lane Cove West NSW 2066

Revision		FOR DEVELOPMENT APPROVAL			
Rev	Date	Description	Drawn	Checked	
A	18.12.18	FOR SSD SUBMISSION	CC	BG	



BREAKUP & CULTIVATE
SUBGRADE TO 150mm
DEPTH

PROPOSED APZ LANDSCAPE PLANTING							
CODE	BOTANICAL NAME	COMMON NAME	MATURE HEIGHT	INDIGENOUS	SIZE	PLANTING DENSITY	QTY*
	Trees						
ACM smi	<i>Acmena smithii</i>	Lillypilly	10m	✓	5L	As Shown	3
ANG cos	<i>Angophora costata</i>	Sydney Red Gum	20m	✓	5L	As Shown	4
ELA ret	<i>Elaeocarpus reticulatus</i>	Blueberry Ash	10m	✓	5L	As Shown	4
EUC rac	<i>Eucalyptus racemosa</i>	Scribbly Gum	15m	✓	5L	As Shown	4
EUC hae	<i>Eucalyptus haemastoma</i>	Scribbly Gum	10m	✓	5L	As Shown	5
EUC sal	<i>Eucalyptus saligna</i>	Sydney Blue Gum	30m	✓	5L	As Shown	2
GLO fer	<i>Glochidion ferdinandi</i>	Cheese Tree	5m	✓	5L	As Shown	2
MEL nod	<i>Melaleuca nodosa</i>	Needle Paperbark	5m	✓	5L	As Shown	9
	Shrubs						
ACA flo	<i>Acacia floribunda</i>	Sally Wattle	6m	✓	5L	As Shown	22
CAL ser	<i>Callicormia serratifolia</i>	<i>Black Wattle</i>	6m	✓	5L	As Shown	27
HAK ter	<i>Hakea sericea</i>	Needle Bush	2m	✓	5L	As Shown	58
HAK ser	<i>Hakea teretifolia</i>	Dagger Hakea	2m	✓	5L	As Shown	56
KUN amb	<i>Kunzea ambigua</i>	Tick Bush	2m	✓	5L	As Shown	81
LEP pol	<i>Leptospermum polygalifolium</i>	Yellow Tea-Tree	3m	✓	5L	As Shown	125
PIT rev	<i>Pittosporum revolutum</i>	Yellow Pittosporum	3m	✓	5L	As Shown	90
GRE ser	<i>Grevillea sericea</i>	Pink Spider-flower	2m	✓	5L	As Shown	56

*QTY INDICATIVE
FINAL NUMBERS TO BE CALCULATED AT CC/CONSTRUCTION STAGE

INDIGENOUS NATIVE GRASS SEED MIX		
CODE	BOTANICAL NAME	COMMON NAME
	Grasses & Sedges	
DIC cri	<i>Dichelachne crinita</i>	Long-Hair Plume Grass
NOT lon	<i>Notodanthonia longifolia</i>	Wallaby Grass
THE aus	<i>Themeda australis</i>	Kangaroo Grass
MIC sti	<i>Microlaena stipoides</i>	Microlaena
POA aff	<i>Poa affinis</i>	Tussock grass

NOTE: Rate of indigenous native grass seed mix is 3-5kg/ acre. To include vermiculite, grass to be maintained as the height of 100mm as per bushfire consultant recommendations.

SMOOTH-BARKED APPLE - RED BLOODWOOD OPEN FOREST

CODE	BOTANICAL NAME	SIZE	QTY*
	Canopy Trees 1 per 50m2		
ANG cos	<i>Angophora costata</i>	AS PER VMP	4
COR gum	<i>Corymbia gummifera</i>	AS PER VMP	4
EUC glo	<i>Eucalyptus globoidea</i>	AS PER VMP	3
EUC pil	<i>Eucalyptus pilularis</i>	AS PER VMP	3
EUC pip	<i>Eucalyptus piperita</i>	AS PER VMP	3
EUC res	<i>Eucalyptus resinifera</i>	AS PER VMP	3
EUC scl	<i>Eucalyptus sclerophylla</i>	AS PER VMP	3
SYN glo	<i>Syncarpia glomulifera</i>	AS PER VMP	3
	Sub-canopy Trees 1 per 30m2		
ACA par	<i>Acacia parramattensis</i>	AS PER VMP	2
ALL lit	<i>Allocasuarina littoralis</i>	AS PER VMP	3
ELA ret	<i>Elaeocarpus reticulatus</i>	AS PER VMP	4
MEL lin	<i>Melaleuca linariifolia</i>	AS PER VMP	4
XYL pyr	<i>Xylomelum pyriforme</i>	AS PER VMP	3
	Shrubs 1 per 5m2		
ACA lin	<i>Acacia linifolia</i>	AS PER VMP	15
ACA lon	<i>Acacia longifolia</i>	AS PER VMP	15
BRE obl	<i>Breynia oblongifolia</i>	AS PER VMP	8
DOD tri	<i>Dodonaea triquetra</i>	AS PER VMP	10
GRE bux	<i>Grevillea buxifolia</i>	AS PER VMP	12
GRE ser	<i>Grevillea sericea</i>	AS PER VMP	12
KUN amb	<i>Kunzea ambigua</i>	AS PER VMP	20
LEP tri	<i>Leptospermum trinervium</i>	AS PER VMP	12
LEP pol	<i>Leptospermum polygalifolium</i>	AS PER VMP	12

Planting Palette And Images



Acmena smithii



Eucalyptus saligna



Backhousia myrtifolia



Eucalyptus haemastoma



Banksia serrata



Melaleuca ericifolia



Hakea teretifolia



Melaleuca nodosa



Melaleuca decora



Eucalyptus racemosa



Glochidion ferdinandi



Acacia floribunda



Lomandra filiformis



Notodanthonia longifolia



Poa affinis



Microlaena stipoides



Grass seed mix



Themeda australis

SWAMP OAK FLOODPLAIN FOREST - CONTAMINATED LAND

CODE	BOTANICAL NAME	SIZE	QTY*
	Shrubs 1 per 5m2		
BRE obo	<i>Breynia oblongifolia</i>	AS PER VMP	48
BUR spi	<i>Bursaria spinosa subsp. spinosa</i>	AS PER VMP	56
DOD tri	<i>Dodonaea triquetra</i>	AS PER VMP	48
MEL thy	<i>Melaleuca thymifolia</i>	AS PER VMP	66
TRE tom	<i>Trema tomentosa</i>	AS PER VMP	56
	Groundcovers 4 per 1m2		
ARI vag	<i>Aristida vagans</i>	AS PER VMP	425
AUS pub	<i>Austrostipa pubescens</i>	AS PER VMP	425
BLE ind	<i>Blechnum indicum</i>	AS PER VMP	280
CEN asi	<i>Centella asiatica</i>	AS PER VMP	280
COM cya	<i>Commelina cyanea</i>	AS PER VMP	360
DIA cae	<i>Dianella caerulea</i>	AS PER VMP	600
ECH cae	<i>Echinopogon caespitosus</i>	AS PER VMP	220
ENT mar	<i>Entolasia marginata</i>	AS PER VMP	220
FIC nod	<i>Ficinia nodosa</i>	AS PER VMP	600
GAH cla	<i>Gahnia clarkei</i>	AS PER VMP	380
IMP cyl	<i>Imperata cylindrica</i>	AS PER VMP	380
JUN usi	<i>Juncus usitatus</i>	AS PER VMP	600
LOM lon	<i>Lomandra longifolia</i>	AS PER VMP	600
MIC sti	<i>Microlaena stipoides</i>	AS PER VMP	600
OPL imb	<i>Oplismenus imbecillis</i>	AS PER VMP	280
THE tri	<i>Themeda triandra</i>	AS PER VMP	600

Drawing Title:
Planting Schedule & Images

DWG No:

LDA-07

GEOSCAPHESLANDSCAPE ARCHITECTS

Suite 215, 284 Victoria Av. Chatswood NSW 2067 Ph. (02) 9411 1485
www.geoscapes.com.au ABN 84 620 205 781 ACN 620 205 781
Registered Landscape Architect #5868

Client:

GREENBOX

Scale: N/A	Date: 18.12.18	Job Number: 1801108	North: N/A	RevisionFOR DEVELOPMENT APPROVAL				
Project: Proposed Data Centre Lane Cove West NSW 2066				Rev	Date	Description	Drawn	Checked
				A	18.12.18	FOR SSD SUBMISSION	CC	BG