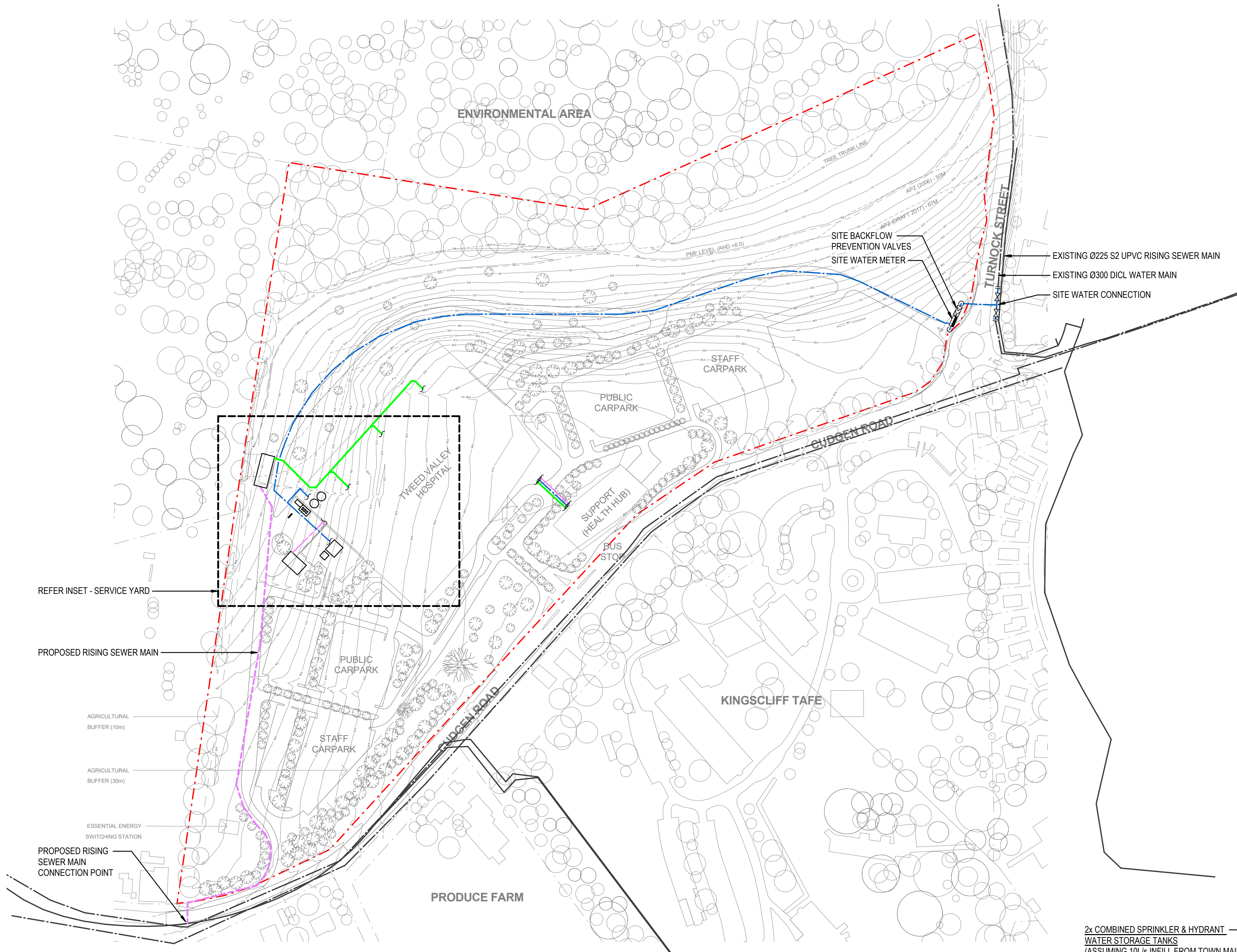


# **HYDRAULIC SERVICES DRAWINGS**





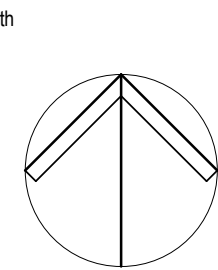
**SITE**  
SCALE: 1 : 2000

- 2x COMBINED SPRINKLER & HYDRANT WATER STORAGE TANKS  
(ASSUMING 10L/S INFILL FROM TOWN MAIN)  
EFFECTIVE CAPACITY: 175kL EACH  
6.75m DIA x 5.3m HIGH
- SEWER PUMPING STATION  
25m LONG x 10m WIDE, IN-GROUND
- FIRE CONTROL ROOM  
6m LONG x 3m WIDE x 2.4m HIGH
- FIRE CONTROL ROOM  
2x COMBINED BOOSTER PUMPS (2x DIESEL, OR 1x DIESEL & 1x ELECTRIC)  
1x BRIGADE RELAY PUMP (MAY NOT BE REQUIRED IN EFFECTIVE HEIGHT OF BUILDING IS LESS THAN 35m - TBC)  
8m LONG x 5m WIDE x 2.5m HIGH
- 2x FIRE BRIGADE BOOSTER ASSEMBLIES  
4-POINT BOOSTER WITH TANK SUCTION  
2m WIDE x 0.6m DEEP x 2m HIGH (EACH)
- LPG TANK COMPOUND  
16m LONG x 10m WIDE x 2m HIGH  
- WITH METAL MESH SURROUND
- COLD WATER PUMP ROOM, FILTERS & METERS  
5m LONG x 5m WIDE x 2.4m HIGH  
- UNDER AMBULANCE BAY
- COLD WATER STORAGE TANK  
10m LONG x 9m WIDE x 4m HIGH  
- UNDER AMBULANCE BAY

**SERVICE YARD - STAGE 2 WORKS**  
SCALE: 1 : 1000

NOT FOR CONSTRUCTION

© COPYRIGHT of this design and plan is the property of ACOR Consultants Pty Ltd, ACN 079 306 246 ABN 40 079 306 246, all rights reserved. It must not be used, modified, reproduced or copied wholly or in part without written permission from ACOR Consultants Pty Ltd.



This drawing has been assigned an electronic code that signifies the drawing has been checked and approved by: RRG

Issue	Description	Date	Drawn	Approved
1	FOR STAGE 1 DA	19.10.18	MP	RRG
2	FOR SUBMISSIONS REPORT	23.01.19	MP	RRG

Client  
**HEALTH INFRASTRUCTURE**

Architect  
**STH + BATES SMART**

Project  
**TWEED VALLEY HOSPITAL**

**ACOR Consultants Pty Ltd**  
Suite 2, Level 1, 33 Herbert Street  
St Leonards NSW 2065  
T +61 2 9438 5098

ENGINEERS/MANAGERS/INFRASTRUCTURE PLANNERS/DEVELOPMENT CONSULTANTS  
Drawing Title  
**HYDRAULIC SERVICES  
SITE PLAN - STAGE 1 EARLY WORKS**

Drawn MP	Date OCT 2018	Scale As indicated	A1 Q.A. Check	Date
Designed RRG	Project No. <b>SY180077</b>	Dwg No. <b>TVH-MP-HF-SK03</b>	Issue <b>2</b>	23/01/2019 2:39:42 PM



# **ELECTRICAL ENGINEERING DRAWINGS**

DRAWING NOTES:

1. PLEASE SEE THE ELECTRICAL AND ICT INFRASTRUCTURE REPORT FOR FUTHER INFORMATION ON ALL PRELIMINARY AND STAGE 1 WORKS RELATING TO ELECTRICAL AND ICT SERVICES.

PRELIMINARY WORKS:  
DISCONNECTION AND  
DEMOLITION OF EXISTING  
BUILDINGS AND SHED

PRELIMINARY WORKS:  
DISCONNECTION AND  
DEMOLITION OF SITE IRRIGATION  
PUMP SUPPLIES AND  
ASSOCIATED POLES AND WIRES

PRELIMINARY WORKS:  
DISCONNECTION AND  
DEMOLITION OF EXISTING  
BUILDINGS AND SHED

STAGE 1 WORKS:  
TEMPORARY  
CONSTRUCTION SITE  
1000kVA ESSENTIAL  
ENERGY KIOSK  
SUBSTATION

STAGE 1 WORKS: 11kV  
CIRCUIT BREAKERS AND  
ASSOCIATED PROTECTION  
IN CUDGEN ZONE STATION  
(LEVEL 3 ASP)

CUDGEN ZONE  
STATION 2.1KM  
WEST

AGRICULTURAL  
BUFFER (10m)

STAGE 1 WORKS:  
PRIVATE HV  
SWITCHING STATION

ESSENTIAL ENERGY  
SWITCHING STATION

ENVIRONMENTAL AREA

TREE TRUNK LINE

APZ (2006) - 50M  
APZ (DRAFT 2017) - 67M

PMF LEVEL (AHD +8.0)

TURNOCK STREET

CUDGEN ROAD

SUPPORT  
(HEALTH HUB)

BUS  
STOP

PRELIMINARY WORKS: TEMPORARY  
PROJECT SITE ENTRANCE  
LIGHTING

PRELIMINARY WORKS:  
RECONNECTION OF 100kVA POLE  
MOUNTED TRANSFORMER TO  
TEMPORARY DISTRIBUTION BOARD  
FEEDING PROJECT SITE SUPPLIES

KINGSCLIFF TAFE

STAGE 1 WORKS:  
11kV CONNECTION FROM EXISTING  
ABOVE GROUND FEEDERS ON  
CUDGEN ROAD TO FEED NEW  
ESSENTIAL ENERGY TEMPORARY  
KIOSK SUBSTATION

STAGE 1 WORKS ALONG CUDGEN  
ROAD:  
- PUBLIC ROAD LIGHTING AT NEW  
INTERSECTIONS (LEVEL 3 ASP)  
- DIVERSION OF TELSTRA, OPTUS  
AND AARNET CABLES

STAGE 1 WORKS:  
TEMPORARY  
PROJECT SITE  
ENTRANCE  
LIGHTING

STAGE 1 WORKS: PERIMETER  
ESSENTIAL ENERGY RING MAIN  
UNITS FOR ELECTRICAL POINT OF  
CONNECTION TO THE ESSENTIAL  
ENERGY 11kV NETWORK (LEVEL 3  
ASP)

STAGE 1 WORKS:  
ELECTRICAL  
INFRASTRUCTURE  
HIGHWAY INCLUDING PIT  
AND PIPE SYSTEMS

STAGE 1 WORKS:  
TEMPORARY  
PROJECT SITE  
ENTRANCE  
LIGHTING

STAGE 1 WORKS:  
COMMUNICATIONS  
INFRASTRUCTURE  
HIGHWAY INCLUDING PIT  
AND PIPE SYSTEMS AND  
COMMUNICATIONS  
LEAD-IN CONDUITS FROM  
SITE BOUNDARY TO  
FUTURE INTAKE ROOMS

LEGEND

- SITE BOUNDARY
- MAXIMUM PLANNING ENVELOPE  
ABOVE GROUND LEVEL
- MAXIMUM PLANNING ENVELOPE  
BELOW GROUND LEVEL
- TREE TRUNK LINE
- APZ OFFSETS
- PROBABLY MAXIMUM  
FLOOD LINE (PMF)
- AGRICULTURE BUFFER
- INDICATIVE BUILDING  
ENTRIES

NOTE: MAXIMUM ENVELOPE DOES NOT REPRESENT BUILDING FORMS. The **Maximum Planning Envelope** describes the height, width and breadth limits of the proposed building forms. It is to be construed that the maximum planning envelope extends to interface with the existing natural ground level (and capturing basement levels and associated substructure) or modified natural ground level. The **Maximum Planning Envelope** excludes secondary architectural features including as examples; glazed canopies, unenclosed covered walkways, building services, hard landscaping, flag poles, lighting poles, fencing and wayfinding signage or the like, which will occur beyond the boundary of the **Maximum Planning Envelope**

REV	DESCRIPTION	DATE
05	ISSUED FOR INFORMATION	19/09/2018
06	ISSUED FOR INFORMATION	22/01/2019

COPYRIGHT

ALL RIGHTS RESERVED. THIS WORK IS COPYRIGHT AND CANNOT BE REPRODUCED OR COPIED IN ANY FORM OR BY ANY MEANS (GRAPHIC, ELECTRONIC OR MECHANICAL, INCLUDING PHOTOCOPYING) WITHOUT THE WRITTEN PERMISSION OF THE PRINCIPAL. UNDER THE TERMS OF THE CONTRACT, ANY LICENCE, EXPRESS OR IMPLIED, TO USE THE DOCUMENT FOR ANY PURPOSE WHATSOEVER IS RESTRICTED TO THE TERMS OF THE AGREEMENT OR IMPLIED AGREEMENT WITH THE PRINCIPAL UNDER THE TERMS OF THE CONTRACT.

DIMENSIONS

USE FIGURED DIMENSIONS, DO NOT SCALE. CONTRACTORS MUST VERIFY ALL DIMENSIONS ON THE SITE BEFORE COMMENCING ANY WORK OR MAKING ANY SHOP DRAWING WHICH MUST BE SUBMITTED AND REVIEWED BEFORE MANUFACTURE.

FIXTURES, FITTINGS & EQUIPMENT SPECIFICATIONS

SUBSTITUTE FF&E EQUIPMENT SPECIFICATIONS  
THE FIT-OUT DESIGN AND DOCUMENTATION HAS BEEN COMPLETED ON THE BASIS OF FF&E AND EQUIPMENT ADVISED TO THIS OFFICE AT THE TIME OF BRIEFING THE DESIGN. THE DESIGN PROVISIONS FOR FF&E AND EQUIPMENT INCORPORATES SPATIAL ALLOCATIONS, SERVING, LOADING AND ACCESS CLEARANCES AND WHERE APPROPRIATE SERVICES REQUIREMENTS, HAVING DUE REGARD FOR SURROUNDING FIXTURES AND FITTINGS. IT SHOULD BE NOTED THAT SUBSTITUTE FF&E OR EQUIPMENT WITH ALTERNATE SPECIFICATIONS SHOULD NOT BE PROCURED PRIOR TO VALIDATING THOSE SPECIFICATIONS AGAINST THE ITEM CONTROL, SCHEDULE AND DESIGN PROVISIONS IN THE MODEL. THIS OFFICE ACCEPTS NO RESPONSIBILITY FOR THE PROCUREMENT OF SUBSTITUTE FF&E AND EQUIPMENT WHICH HAS NOT BEEN REVIEWED AND VALIDATED AGAINST THE ORIGINAL DESIGN PROVISIONS.

SERVICE POINTS DISCLAIMER

THE SERVICE POINTS IDENTIFIED ON THESE DRAWINGS HAVE BEEN OVERLAYED FROM THE BUILDING SERVICES ENGINEERING MODEL, AND ARE PROVIDED FOR INFORMATION AND SET-OUT PURPOSES ONLY. WE HAVE BEEN ADVISED BY THE SERVICES ENGINEERS THAT THE POINTS REPRESENTED ON THESE DRAWINGS ARE CORRECT AT THE TIME OF PUBLICATION. THIS OFFICE DOES NOT WARRANT THE ACCURACY OF THIS DATA, REFER TO THE BUILDING SERVICES ENGINEERING DOCUMENTATION FOR THE INSTALLATION OF THE SERVICES POINTS, AND THE INTERFACE BETWEEN THE SERVICES POINTS AND THE RESPECTIVE ENGINEERING SYSTEMS.

ARCHITECTS

**STH BATESSMART.**

ABN: 21 134 476 065  
LEVEL 4, 89 YORK STREET  
SYDNEY NSW 2000, AUSTRALIA  
PH: (02) 8299 4600 FAX: (03) 9885 2455  
E: syd@batesmart.com.au

43 BRISBANE STREET,  
SURRY HILLS, NSW 2010  
ABN: 68 094 740 986 PH: (02) 8354 5100  
E: syd@batesmart.com.au

THIS ARCHITECTURAL DESIGN IS THE COPYRIGHT OF SILVER THOMAS HANLEY AND BATES SMART AND SHALL NOT BE REPRODUCED WITHOUT THEIR WRITTEN PERMISSION

PROJECT MANAGER

**TSA**  
MANAGEMENT

CLIENT

**NSW** **Health** **Health**  
GOVERNMENT **Infrastructure** **Northern NSW**  
**Local Health District**

PROJECT

**TWEED VALLEY HOSPITAL**

771 Cudgen Road, Cudgen

DRAWING TITLE

**MASTERPLAN**

**CONCEPT PLAN**

**ARUP**

Job No	262011
Dwg No	E-DA-001
Date	23-01-2019

Job Title Tweed Valley Hospital

Dwg Title SSD Stage 1 DA Electrical and ICT Drawing