

**LEGEND**

SITE BOUNDARY

BUSHFIRE HAZARD VEGETATION

VEGETATION BUFFER (100m)

**COPYRIGHT**

ALL RIGHTS RESERVED. THIS WORK IS COPYRIGHT AND CANNOT BE REPRODUCED OR COPIED IN ANY FORM OR BY ANY MEANS (GRAPHIC, ELECTRONIC OR MECHANICAL, INCLUDING PHOTOCOPYING) WITHOUT THE WRITTEN PERMISSION OF THE PRINCIPAL UNDER THE TERMS OF THE CONTRACT. ANY LICENCE, EXPRESS OR IMPLIED, TO USE THE DOCUMENT FOR ANY PURPOSE WHATSOEVER IS RESTRICTED TO THE TERMS OF THE AGREEMENT OR IMPLIED AGREEMENT WITH THE PRINCIPAL UNDER THE TERMS OF THE CONTRACT.

**DIMENSIONS**

USE FIGURED DIMENSIONS. DO NOT SCALE. CONTRACTORS MUST VERIFY ALL DIMENSIONS ON THE SITE BEFORE COMMENCING ANY WORK OR MAKING ANY SHOP DRAWING WHICH MUST BE SUBMITTED AND REVIEWED BEFORE MANUFACTURE.

**FIXTURES, FITTINGS & EQUIPMENT SPECIFICATIONS**

SUBSTITUTE FF&E EQUIPMENT SPECIFICATIONS  
THE FIT-OUT DESIGN AND DOCUMENTATION HAS BEEN COMPLETED ON THE BASIS OF FF&E AND EQUIPMENT ADVISED TO THIS OFFICE AT THE TIME OF BRIEFING THE DESIGN. THE DESIGN PROVISIONS FOR FF&E AND EQUIPMENT INCORPORATES SPATIAL ALLOCATIONS, SERVICING, LOADING AND ACCESS CLEARANCES AND WHERE APPROPRIATE SERVICES REQUIREMENTS, HAVING DUE REGARD FOR SURROUNDING FIXTURES AND FITTINGS, IT SHOULD BE NOTED THAT SUBSTITUTE FF&E OR EQUIPMENT WITH ALTERNATE SPECIFICATIONS SHOULD NOT BE PROCURED PRIOR TO VALIDATING THOSE SPECIFICATIONS AGAINST THE ITEM CONTROL, SCHEDULE AND DESIGN PROVISIONS IN THE MODEL. THIS OFFICE ACCEPTS NO RESPONSIBILITY FOR THE PROCUREMENT OF SUBSTITUTE FF&E AND EQUIPMENT WHICH HAS NOT BEEN REVIEWED AND VALIDATED AGAINST THE ORIGINAL DESIGN PROVISIONS.

**SERVICE POINTS DISCLAIMER**

THE SERVICE POINTS IDENTIFIED ON THESE DRAWINGS HAVE BEEN OVERLAYED FROM THE BUILDING SERVICES ENGINEERING MODEL, AND ARE PROVIDED FOR INFORMATION AND SET-OUT PURPOSES ONLY. WE HAVE BEEN ADVISED BY THE SERVICES ENGINEERS THAT THE POINTS REPRESENTED ON THESE DRAWINGS ARE CORRECT AT THE TIME OF PUBLICATION. THIS OFFICE DOES NOT WARRANT THE ACCURACY OF THIS DATA. REFER TO THE BUILDING SERVICES ENGINEERING DOCUMENTATION FOR THE INSTALLATION OF THE SERVICES POINTS, AND THE INTERFACE BETWEEN THE SERVICES POINTS AND THE RESPECTIVE ENGINEERING SYSTEMS.

**ISSUED FOR INFORMATION**

ARCHITECTS

BATESSMART.

LEVEL 4, 89 YORK STREET,  
SYDNEY, NSW, 2000  
ABN: 73 561 293 057 PH: (02) 8299 4600  
email: syd@batesmart.com.au

43 BRISBANE STREET,  
SURREY HILLS, NSW 2010  
PH: (02) 8384 5100  
email: nola@sth.com.au

THIS ARCHITECTURAL DESIGN IS THE COPYRIGHT OF SILVER THOMAS HANLEY AND BATES SMART AND SHALL NOT BE REPRODUCED WITHOUT THEIR WRITTEN PERMISSION

PROJECT MANAGER

CLIENT

Health Infrastructure

Health Northern NSW Local Health District

PROJECT

**TWEED VALLEY HOSPITAL**  
**771 Cudgen Road, Cudgen**

DRAWING TITLE

**SITE ANALYSIS**  
**BUSH FIRE PRONE LAND**

SCALE

0

20

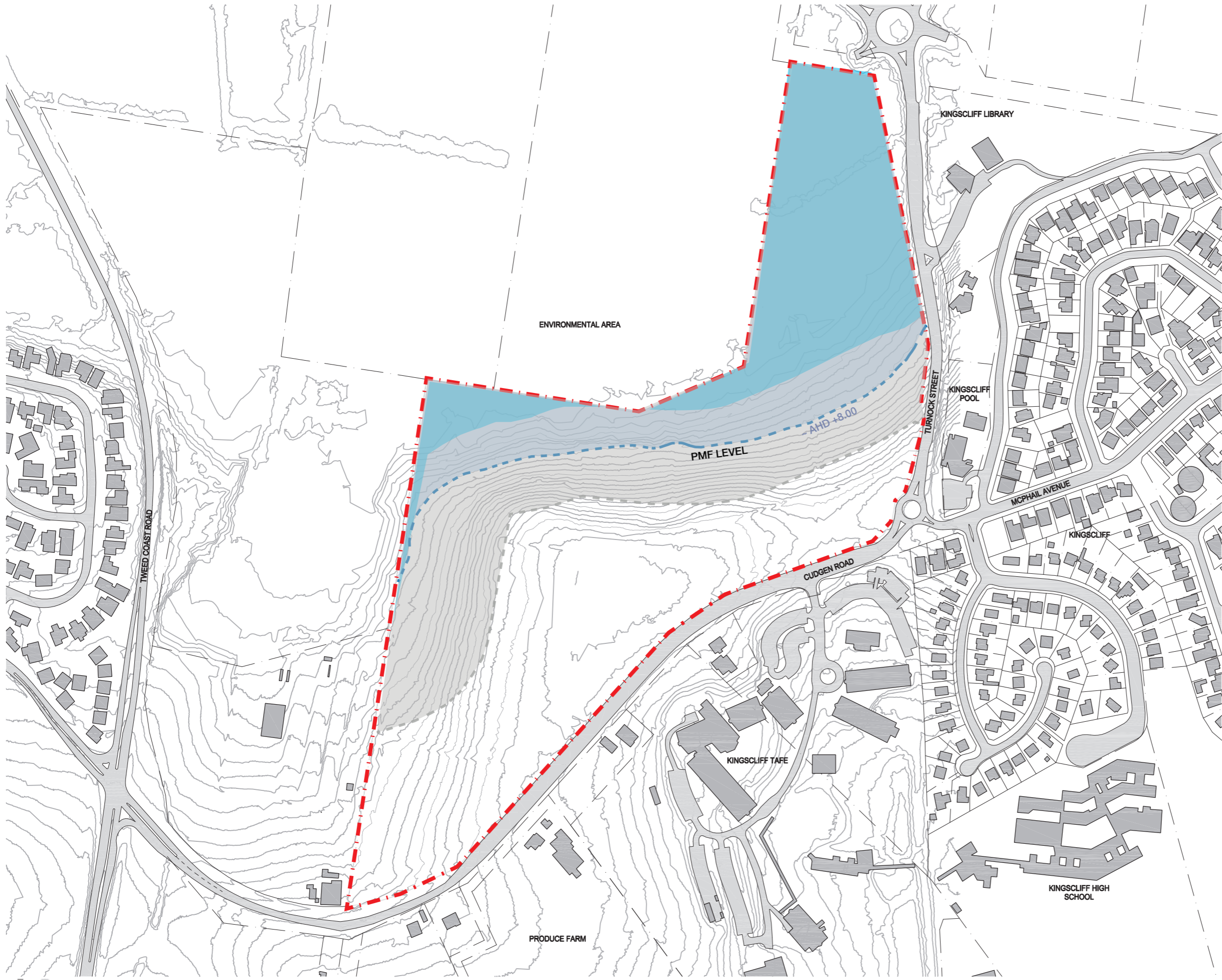
50

100

200

METRES

DATE	DRAWN BY	CHECKED
19/09/2018	BS	MH
PROJECT No	DRAWING No	REVISION
10363	AR-SKE-02-005	00



**LEGEND**

- SITE BOUNDARY
- PROBABLE MAXIMUM FLOOD LEVEL
- COASTAL WETLAND
- PROXIMITY AREA TO COASTAL WETLANDS (100m)

**COPYRIGHT**  
ALL RIGHTS RESERVED. THIS WORK IS COPYRIGHT AND CANNOT BE REPRODUCED OR COPIED IN ANY FORM OR BY ANY MEANS (GRAPHIC, ELECTRONIC OR MECHANICAL, INCLUDING PHOTOCOPYING) WITHOUT THE WRITTEN PERMISSION OF THE PRINCIPAL UNDER THE TERMS OF THE CONTRACT. ANY LICENCE, EXPRESS OR IMPLIED, TO USE THE DOCUMENT FOR ANY PURPOSE WHATSOEVER IS RESTRICTED TO THE TERMS OF THE AGREEMENT OR IMPLIED AGREEMENT WITH THE PRINCIPAL UNDER THE TERMS OF THE CONTRACT.

**DIMENSIONS**  
USE FIGURED DIMENSIONS. DO NOT SCALE. CONTRACTORS MUST VERIFY ALL DIMENSIONS ON THE SITE BEFORE COMMENCING ANY WORK OR MAKING ANY SHOP DRAWING WHICH MUST BE SUBMITTED AND REVIEWED BEFORE MANUFACTURE.

**FIXTURES, FITTINGS & EQUIPMENT SPECIFICATIONS**  
SUBSTITUTE FF&E EQUIPMENT SPECIFICATIONS THE FIT-OUT DESIGN AND DOCUMENTATION HAS BEEN COMPLETED ON THE BASIS OF FF&E AND EQUIPMENT ADVISED TO THIS OFFICE AT THE TIME OF BRIEFING THE DESIGN. THE DESIGN PROVISIONS FOR FF&E AND EQUIPMENT INCORPORATES SPATIAL ALLOCATIONS, SERVICING, LOADING AND ACCESS CLEARANCES AND WHERE APPROPRIATE SERVICES REQUIREMENTS, HAVING DUE REGARD FOR SURROUNDING FIXTURES AND FITTINGS, IT SHOULD BE NOTED THAT SUBSTITUTE FF&E OR EQUIPMENT WITH ALTERNATE SPECIFICATIONS SHOULD NOT BE PROCURED PRIOR TO VALIDATING THOSE SPECIFICATIONS AGAINST THE ITEM CONTROL SCHEDULE AND DESIGN PROVISIONS IN THE MODEL. THIS OFFICE ACCEPTS NO RESPONSIBILITY FOR THE PROCUREMENT OF SUBSTITUTE FF&E AND EQUIPMENT WHICH HAS NOT BEEN REVIEWED AND VALIDATED AGAINST THE ORIGINAL DESIGN PROVISIONS.

**SERVICE POINTS DISCLAIMER**  
THE SERVICE POINTS IDENTIFIED ON THESE DRAWINGS HAVE BEEN OVERLAYED FROM THE BUILDING SERVICES ENGINEERING MODEL, AND ARE PROVIDED FOR INFORMATION AND SET-OUT PURPOSES ONLY. WE HAVE BEEN ADVISED BY THE SERVICES ENGINEERS THAT THE POINTS REPRESENTED ON THESE DRAWINGS ARE CORRECT AT THE TIME OF PUBLICATION. THIS OFFICE DOES NOT WARRANT THE ACCURACY OF THIS DATA. REFER TO THE BUILDING SERVICES ENGINEERING DOCUMENTATION FOR THE INSTALLATION OF THE SERVICES POINTS, AND THE INTERFACE BETWEEN THE SERVICES POINTS AND THE RESPECTIVE ENGINEERING SYSTEMS.

**ISSUED FOR INFORMATION**  
ARCHITECTS

**BATESSMART.**

LEVEL 4, 89 YORK STREET,  
SYDNEY, NSW, 2000  
ABN: 73 561 293 057 PH: (02) 8299 4500  
email: syd@batesmart.com.au

43 BRISBANE STREET,  
SURRY HILLS, NSW 2010  
PH: (02) 8384 5100  
email: nola@sth.com.au

THIS ARCHITECTURAL DESIGN IS THE COPYRIGHT OF SILVER THOMAS HANLEY AND BATES SMART AND SHALL NOT BE REPRODUCED WITHOUT THEIR WRITTEN PERMISSION

PROJECT MANAGER

**TSA**  
MANAGEMENT

CLIENT

**Health**  
Infrastructure

PROJECT

**TWEED VALLEY HOSPITAL**  
**771 Cudgen Road, Cudgen**

DRAWING TITLE

**SITE ANALYSIS**  
**COASTAL WETLAND AND FLOODING**

SCALE

0 20 50 100 200 METRES

DATE	DRAWN BY	CHECKED
19/09/2018	BS	MH
PROJECT No	DRAWING No	REVISION
10363	AR-SKE-02-006	00

# LANDSCAPE PROPOSAL

## LANDSCAPE ZONAL PLAN

### KEY

- APZ - Asset Protection Zone
- ..... PMF - Probable Maximum Flood
- - - Future Development Zone
- 1. Retained undisturbed forest
- 2. Landscaped embankment. Drainage, bio retentions & detention tbc and coordinated with civil engineers.
- 3. North Hospital landscape zone. Steep topography. (character complementary to context, gardens, food production, breakout spaces)
- 4. South Hospital landscape zone. Flat topography (open lawns, gardens, plazas & feature entries)
- 5. Retained existing fruit tree orchard
- 6. WSUD car park planting (trees and planting in rain gardens)
- 7. WSUD roadway and plant area landscape (trees and planting in rain gardens)
- 8. Entry Landscape. Programmed gathering space upon entry. Low vegetation (max.0.6m high) to maintain sight lines to hospital and entry roadway. Trees located where view lines unaffected (crown lifted to min. 1.8m high).
- 9. Additional planting to achieve minimum 30m wide vegetated buffer to adjacent agricultural land.
- 10. 10m wide vegetated buffer. Retain and augment existing boundary vegetation (selective removal to achieve required access and sight lines). Staged replacement of pine trees and understorey with native species.
- 11. Landscaped courtyards within hospital envelope

Note: All zones vegetated in accordance with Asset Protection Zone (APZ) guidelines where required refer to 'Bushfire Constraints Assessment'.

