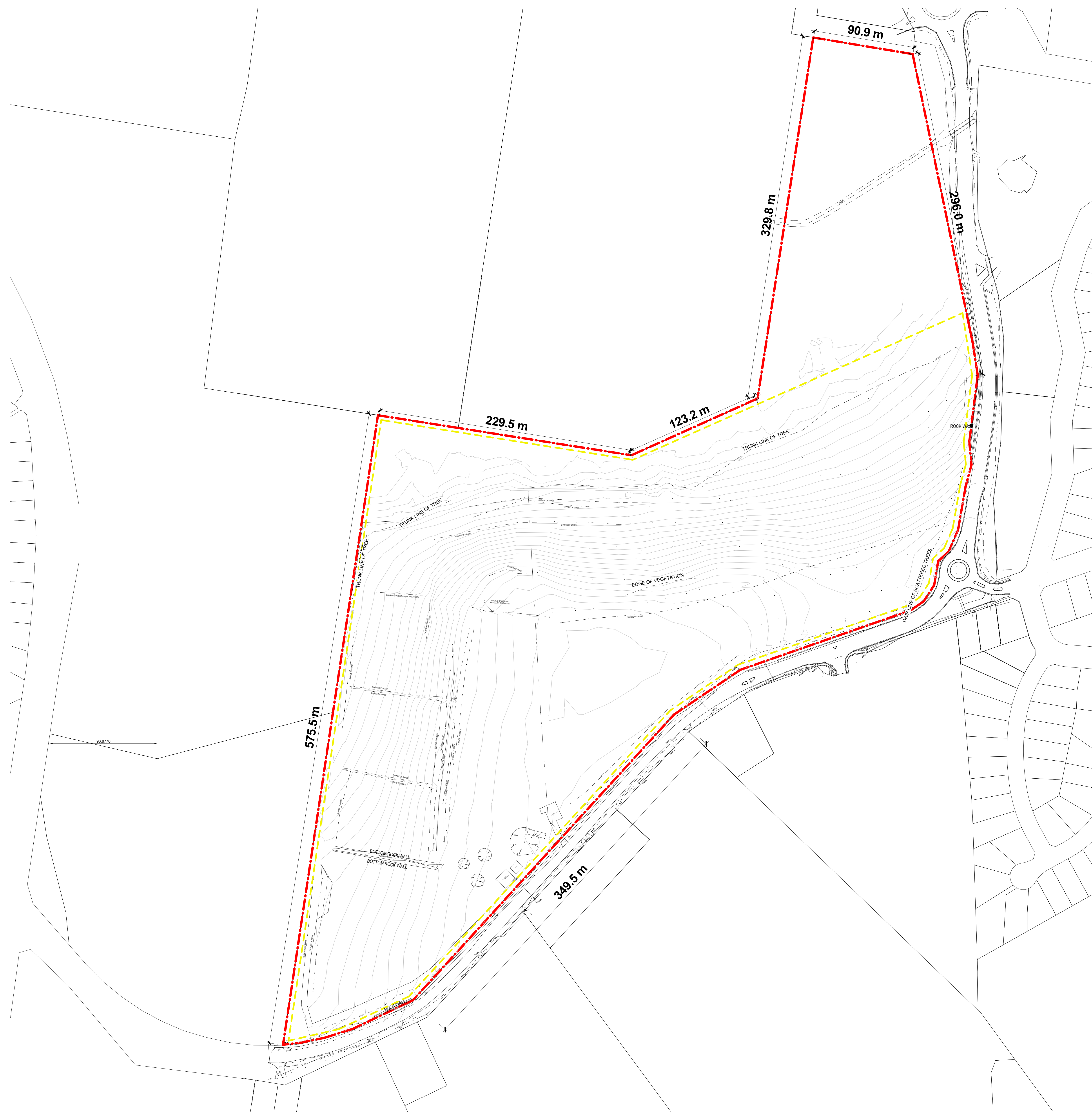


SSD STAGE 1 DA DRAWINGS

ARCHITECTURAL DRAWINGS

[illegible]

NOTE
REFER HERITAGE REPORT FOR ROCK
WALL LOCATIONS AND PROTECTION
REQUIREMENTS

 PROPERTY BOUNDARY

COPYRIGHT
RIGHTS RESERVED. THIS WORK IS COPYRIGHT AND CANNOT BE REPRODUCED OR
IN ANY FORM OR BY ANY MEANS (GRAPHIC, ELECTRONIC OR MECHANICAL,
INCLUDING PHOTOCOPYING) WITHOUT THE WRITTEN PERMISSION OF THE PRINCIPAL
UNDER THE TERMS OF THE CONTRACT. ANY LICENCE, EXPRESS OR IMPLIED, TO USE
A DOCUMENT FOR ANY PURPOSE WHATSOEVER IS RESTRICTED TO THE TERMS OF
AGREEMENT OR IMPLIED AGREEMENT WITH THE PRINCIPAL UNDER THE TERMS OF
CONTRACT.

DIMENSIONS

BE FIGURED DIMENSIONS, DO NOT SCALE. CONTRACTORS MUST
VERIFY ALL DIMENSIONS ON THE SITE BEFORE COMMENCING ANY
WORK OR MAKING ANY SHOP DRAWING WHICH MUST BE SUBMITTED
AND REVIEWED BEFORE MANUFACTURE

FIXTURES, FITTINGS & EQUIPMENT SPECIFICATIONS

SUBSTITUTE F&E EQUIPMENT SPECIFICATIONS

THE OFFICE OF DESIGN AND DOCUMENTATION HAS BEEN COMPLETED ON THE BASIS OF THE F&E AND EQUIPMENT ADJUSTED TO THIS OFFICE AT THE TIME OF BRIEFING THE DESIGN TEAM. THE DESIGN TEAM HAS BEEN ADVISED THAT THE ORIGINAL CONTRACTOR LOCATIONS, SERVICING, LOADING AND ACCESS CLEARANCES AND WHERE APPROPRIATE SERVICES REQUIREMENTS, HAVING DUE REGARD FOR SURROUNDING TRENDS AND FITTINGS, IT SHOULD BE NOTED THAT SUBSTITUTE F&E OR EQUIPMENT WILL ALTERNATE SPECIFICATIONS SHOULD NOT BE PROCURED PRIOR TO VALIDATING THE SUBSTITUTIONS. THE OFFICE OF DESIGN AND DOCUMENTATION HAS BEEN ADVISED THAT THE SUBSTITUTIONS IN THE MODEL, THIS OFFICE ACCEPTS NO RESPONSIBILITY FOR THE DOCUMENTED OF SUBSTITUTE F&E AND EQUIPMENT WHICH HAS NOT BEEN VIEWED AND VALIDATED AGAINST THE ORIGINAL DESIGN PROVISIONS.

SERVICE POINTS DISCLAIMER

THE SERVICE POINTS IDENTIFIED ON THESE DRAWINGS HAVE BEEN OBTAINED FROM THE BUILDING SERVICES ENGINEERING MODEL, AND ARE PROVIDED FOR INFORMATION ONLY. FOR SET-OUT PURPOSES ONLY. WE HAVE BEEN ADVISED BY THE SERVICES ENGINEER AT THE POINTS REPRESENTED ON THESE DRAWINGS ARE CORRECT AT THE TIME OF SUBMISSION. THIS OFFICE DOES NOT WARRANT THE ACCURACY OF THIS DATA. REFERENCE TO THE BUILDING SERVICES ENGINEERING DOCUMENTATION FOR THE INSTALLATION OF THE SERVICES POINTS, AND THE INTERFACE BETWEEN THE SERVICES POINTS AND THE BUILDING SERVICES ENGINEERING SYSTEMS.

ISSUED FOR INFORMATION

— ARCHITECTS



LEVEL 4, 89 YORK STREET,
SYDNEY, NSW, 2000
ABN: 73 561 269 057 PH: (02) 8299 4500
E: enquiries@ethos.com.au

43 BRISBANE STREET,
SURRY HILLS, NSW 2010
ABN: 68 094 740 986 PH: (02) 8354 5100
E: enq@ethosconsult.com.au

THIS ARCHITECTURAL DESIGN IS THE COPYRIGHT OF SILVER THOMAS HANLEY AND
TES SMART AND SHALL NOT BE REPRODUCED WITHOUT THEIR WRITTEN PERMISSION

— PROJECT MANAGER



— CLIENT



Health
Infrastructure

Health
Northern NSW
Local Health District

— PROJECT

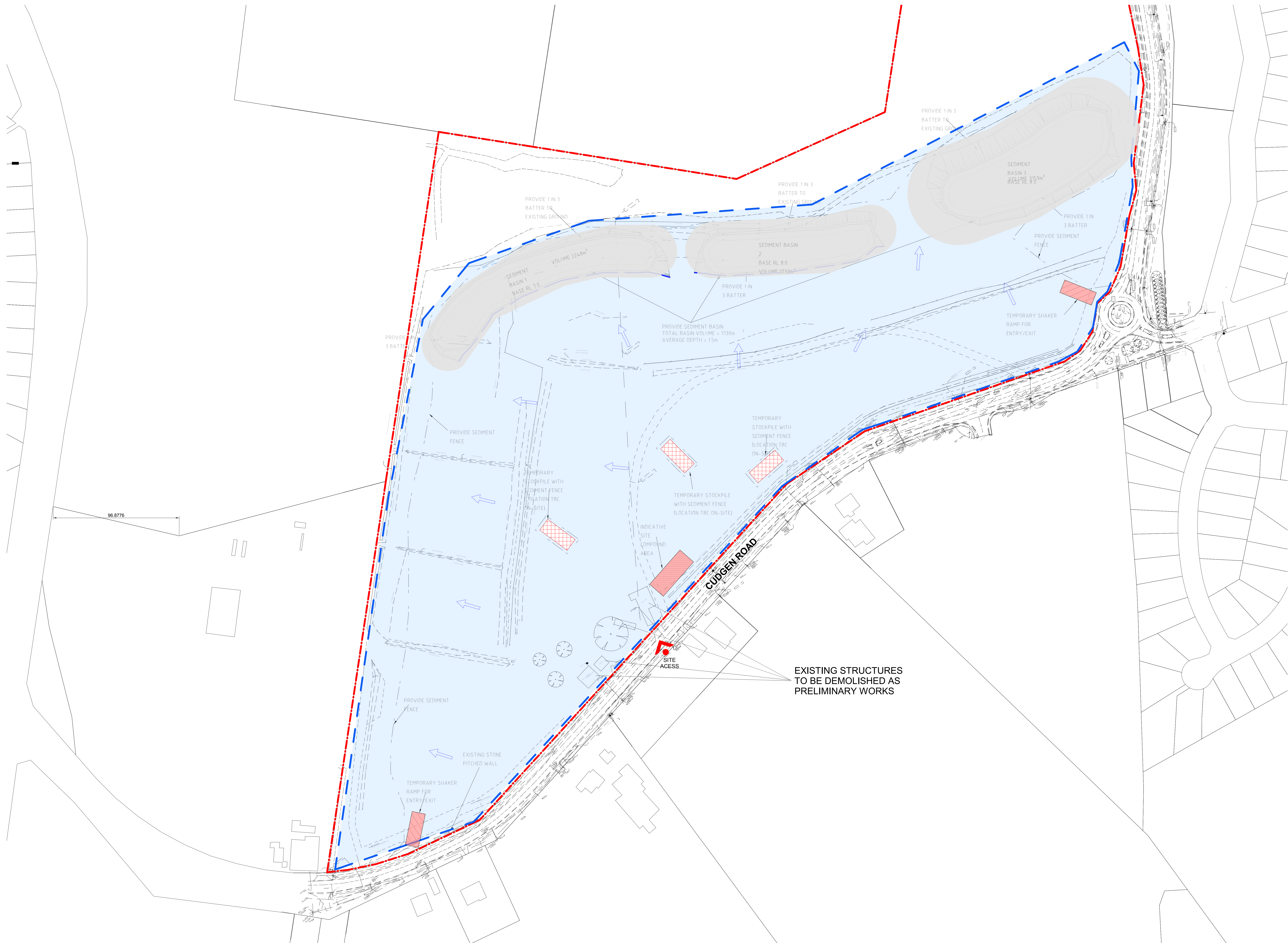
TWEED VALLEY HOSPITAL

— DRAWING TITLE

EXISTING CONDITIONS SITE PLAN

SCALE _____ DATE _____ DRAWN BY _____ CHECKED _____
1:14/09/2018SLAB

PROJECT No. — DRAWING No. — REVISION
10363.00 AR-DWG-02-100 2



KEY PLAN

REV

DESCRIPTION

DRN

DATE

1

ISSUED FOR INFORMATION

SL

20/10/2018

2

ISSUED FOR INFORMATION

SL

14/09/2018

3

ISSUED FOR INFORMATION

SL

10/05/2018

4

ISSUED FOR INFORMATION

SL

04/10/2018

5

ISSUED FOR INFORMATION

SL

20/10/2018

LEGEND

--- SITE BOUNDARY

--- SEDIMENT FENCE

EARLY WORKS SITE AREA

TEMPORARY STOCKPILE (LOCATION TBC ON-SITE)

PRELIMINARY WORKS (SEDIMENTATION BASIN LOCATION TBC ON-SITE)

TEMPORARY SHAKER RAMP FOR ENTRY / EXIT

OVERLAND FLOW

RETAINING WALL

REFER TO CIVIL ENGINEERING DRAWINGS FOR FURTHER INFORMATION

COPYRIGHT

ALL RIGHTS RESERVED. THIS WORK IS COPYRIGHT AND CANNOT BE REPRODUCED OR COPIED IN ANY FORM OR BY ANY MEANS, GRAPHIC, ELECTRONIC OR MECHANICAL, INCLUDING PHOTOCOPYING, WITHOUT THE WRITTEN PERMISSION OF THE PRINCIPAL UNDER THE TERMS OF THE CONTRACT. ANY LICENCE, EXPRESS OR IMPLIED, TO USE THE DOCUMENT FOR ANY PURPOSE WHATSOEVER IS RESTRICTED TO THE TERMS OF THE AGREEMENT OR IMPLIED AGREEMENT WITH THE PRINCIPAL UNDER THE TERMS OF THE CONTRACT.

DIMENSIONS

USE FIGURED DIMENSIONS. DO NOT SCALE. CONTRACTORS MUST VERIFY ALL DIMENSIONS ON THE SITE BEFORE COMMENCING ANY WORK OR MAKING ANY SHOP DRAWING WHICH MUST BE SUBMITTED AND REVIEWED BEFORE MANUFACTURE.

FIXTURES, FITTINGS & EQUIPMENT SPECIFICATIONS

SUBSTITUTE FIRE EQUIPMENT SPECIFICATIONS
THE FIT-OUT DESIGN AND DOCUMENTATION HAS BEEN COMPLETED ON THE BASIS OF FIRE AND EQUIPMENT ADVISED TO THIS OFFICE AT THE TIME OF BRIEFING THE DESIGN. THE DESIGN PROVIDES FOR FIRE AND EQUIPMENT INCORPORATES SPATIAL ALLOCATIONS, SERVICES, LOADING AND ACCESS CLEARANCES AND WHERE APPROPRIATE SERVICES REQUIREMENTS, HAVING DUE REGARD FOR SURROUNDING PATTERNS AND FITTINGS. IT SHOULD BE NOTED THAT SUBSTITUTE FIRE OR EQUIPMENT WITH ALTERNATE SPECIFICATIONS SHOULD NOT BE PROCURED PRIOR TO VALIDATING THOSE SPECIFICATIONS AGAINST THE ITEM CONTROL, SCHEDULE AND DESIGN PROVISIONS IN THE MODEL. THIS OFFICE ACCEPTS NO RESPONSIBILITY FOR THE PROCUREMENT OF SUBSTITUTE FIRE AND EQUIPMENT WHICH HAS NOT BEEN REVIEWED AND VALIDATED AGAINST THE ORIGINAL DESIGN PROVISIONS.

SERVICE POINTS DISCLAIMER

THE SERVICE POINTS IDENTIFIED ON THESE DRAWINGS HAVE BEEN OVERLAPPED FROM THE BUILDING SERVICES ENGINEERING MODEL, AND ARE PROVIDED FOR INFORMATION AND REF-OUT PURPOSES ONLY. WE HAVE BEEN ADVISED BY THE SERVICES ENGINEERS THAT THE POINTS REPRESENTED ON THESE DRAWINGS ARE CORRECT AT THE TIME OF PUBLICATION. THIS OFFICE DOES NOT WARRANT THE ACCURACY OF THIS DATA. REFER TO THE BUILDING SERVICES ENGINEERING DOCUMENTATION FOR THE INSTALLATION OF THE SERVICES POINTS, AND THE INTERFACE BETWEEN THE SERVICES POINTS AND THE RESPECTIVE ENGINEERING SYSTEMS.

ISSUED FOR INFORMATION

ARCHITECTS

STH

BATESSMART.

LEVEL 4, 88 YORK STREET,
SYDNEY NSW 2000
ABN: 71 561 285 007 PH: (02) 8256 4000
E: info@sths.com.au

43 BRISBANE STREET,
SYDNEY NSW 2015
ABN: 69 034 743 366 PH: (02) 8354 5100
E: info@bates-smart.com.au

PROJECT MANAGER

TSA

MANAGEMENT

CLIENT

NSW

Health Infrastructure

Health Northern NSW Local Health District

PROJECT

TWEED VALLEY HOSPITAL

DRAWING TITLE

STAGE 1 EARLY WORKS
SITE PLAN

SCALE

DATE

DATE

DRAWN BY

CHECKED

1 : 20/10/2018 SL AB

1000@A0

PROJECT No

DRAWING No

REVISION

10363.00 AR-DWG-10-100

5

BMS-2018-07-TWEED VALLEY BUILDING_A10-04



LEGEND

- SITE BOUNDARY
- MAXIMUM PLANNING ENVELOPE
- TEMPORARY CONSTRUCTION LAYDOWNS & PARKING
- INTERNAL CONSTRUCTION ACCESS
- INTERNAL CONSTRUCTION ACCESS. INCLUDES PRELIMINARY WORKS, ACCESS & STORMWATER MANAGEMENT



COPYRIGHT

ALL RIGHTS RESERVED. THIS WORK IS COPYRIGHT AND CANNOT BE REPRODUCED OR COPIED IN ANY FORM OR BY ANY MEANS (GRAPHIC, ELECTRONIC OR MECHANICAL, INCLUDING PHOTOCOPYING) WITHOUT THE WRITTEN PERMISSION OF THE PRINCIPAL UNDER THE TERMS OF THE CONTRACT. ANY LICENCE, EXPRESS OR IMPLIED, TO USE THE DOCUMENT FOR ANY PURPOSE WHATSOEVER IS RESTRICTED TO THE TERMS OF THE AGREEMENT OR IMPLIED AGREEMENT WITH THE PRINCIPAL UNDER THE TERMS OF THE CONTRACT.

DIMENSIONS

USE FIGURED DIMENSIONS. DO NOT SCALE. CONTRACTORS MUST VERIFY ALL DIMENSIONS ON THE SITE BEFORE COMMENCING ANY WORK OR MAKING ANY SHOP DRAWING WHICH MUST BE SUBMITTED AND REVIEWED BEFORE MANUFACTURE.

FIXTURES, FITTINGS & EQUIPMENT SPECIFICATIONS

SUBSTITUTE FF&E EQUIPMENT SPECIFICATIONS
THE FIT-OUT DESIGN AND DOCUMENTATION HAS BEEN COMPLETED ON THE BASIS OF FF&E AND EQUIPMENT ADVISED TO THIS OFFICE AT THE TIME OF BRIEFING THE DESIGN. THE DESIGN PROVISIONS FOR FF&E AND EQUIPMENT INCORPORATES SPATIAL ALLOCATIONS, SERVICING, LOADING AND ACCESS CLEARANCES AND WHERE APPROPRIATE SERVICES REQUIREMENTS, HAVING DUE REGARD FOR SURROUNDING FIXTURES AND FITTINGS, IT SHOULD BE NOTED THAT SUBSTITUTE FF&E OR EQUIPMENT WITH ALTERNATE SPECIFICATIONS SHOULD NOT BE PROCURED PRIOR TO VALIDATING THOSE SPECIFICATIONS AGAINST THE ITEM CONTROL, SCHEDULE AND DESIGN PROVISIONS IN THE MODEL. THIS OFFICE ACCEPTS NO RESPONSIBILITY FOR THE PROCUREMENT OF SUBSTITUTE FF&E AND EQUIPMENT WHICH HAS NOT BEEN REVIEWED AND VALIDATED AGAINST THE ORIGINAL DESIGN PROVISIONS.

SERVICE POINTS DISCLAIMER

THE SERVICE POINTS IDENTIFIED ON THESE DRAWINGS HAVE BEEN OVERLAYED FROM THE BUILDING SERVICES ENGINEERING MODEL, AND ARE PROVIDED FOR INFORMATION AND SET-OUT PURPOSES ONLY. WE HAVE BEEN ADVISED BY THE SERVICES ENGINEERS THAT THE POINTS REPRESENTED ON THESE DRAWINGS ARE CORRECT AT THE TIME OF PUBLICATION. THIS OFFICE DOES NOT WARRANT THE ACCURACY OF THIS DATA. REFER TO THE BUILDING SERVICES ENGINEERING DOCUMENTATION FOR THE INSTALLATION OF THE SERVICES POINTS, AND THE INTERFACE BETWEEN THE SERVICES POINTS AND THE RESPECTIVE ENGINEERING SYSTEMS.

ISSUED FOR INFORMATION

ARCHITECTS



LEVEL 4, 89 YORK STREET,
SYDNEY, NSW, 2000
ABN: 73 561 289 057 PH: (02) 8299 4600
email: syd@batesmart.com.au

43 BRISBANE STREET,
SURRY HILLS, NSW 2010
PH: (02) 8334 5100
email: nats@sth.com.au

THIS ARCHITECTURAL DESIGN IS THE COPYRIGHT OF SILVER THOMAS HANLEY AND BATES SMART AND SHALL NOT BE REPRODUCED WITHOUT THEIR WRITTEN PERMISSION

PROJECT MANAGER



CLIENT



PROJECT

TWEED VALLEY HOSPITAL
771 Cudgen Road, Cudgen

DRAWING TITLE

STAGE 1 WORKS

SCALE



DATE 20/09/2018 DRAWN BY SL CHECKED MH

PROJECT No 10363 DRAWING No AR-SKE-10-110 REVISION 00

LANDSCAPE ARCHITECTURAL DRAWINGS

LANDSCAPE PROPOSAL

TREE REMOVAL AND PRESERVATION PLAN

Hospital planning has focused development high on the site and with an appropriate offset from the northern bush covered wetland to ensure it is undisturbed.

Existing windbreak planting to Cudgen Rd is proposed for retention where possible to mitigate visual impacts of the development and spray drift from adjacent farmland. Removal of vegetation is required in some locations to accommodate road widening, new entry roadways, and easements. Vegetated buffer zones along Cudgen Rd will be designed to supplement the existing buffer planting.

Existing trees will be retained wherever possible, and integrated as landscape features of the development.

KEY

Existing trees to be retained.
(TPZ in accordance with arborist report and AS 4970-2009)

Existing Fruit Tree Orchard to be retained

Existing trees to be removed
(due to development footprint and road works)

High retention value tree - to be retained
(TPZ in accordance with arborist report and AS 4970-2009)

Moderate retention value tree - to be retained if possible, pending detail civil roadworks design

Moderate retention value tree - to be removed

Preliminary Works

A detailed landscape proposal map for the Tweed Valley Hospital site. The map features contour lines indicating elevation, with labels such as '102 DP870722' and '101 DP867796'. It shows the layout of 'CUDGEN ROAD' and 'OXFORD STREET'. Various areas are highlighted: solid green for trees to be retained, light green for a fruit tree orchard, dashed outlines for trees to be removed, a red circle for a high retention value tree, blue circles for moderate retention value trees, and pink for preliminary works. Specific labels include 'THINK LINE OF TREES', 'TREE 1', 'TREE 2', 'TREE 3', 'TREE 4', 'TREE 5', 'TREE 6', 'TREE 7', 'TREE 8', 'TREE 9', 'TREE 10', 'TREE 11', 'TREE 12', 'TREE 13', 'TREE 14', 'TREE 15', 'TREE 16', 'TREE 17', 'TREE 18', 'TREE 19', 'TREE 20', 'TREE 21', 'TREE 22', 'TREE 23', 'TREE 24', 'TREE 25', 'TREE 26', 'TREE 27', 'TREE 28', 'TREE 29', 'TREE 30', 'TREE 31', 'TREE 32', 'TREE 33', 'TREE 34', 'TREE 35', 'TREE 36', 'TREE 37', 'TREE 38', 'TREE 39', 'TREE 40', 'TREE 41', 'TREE 42', 'TREE 43', 'TREE 44', 'TREE 45', 'TREE 46', 'TREE 47', 'TREE 48', 'TREE 49', 'TREE 50', 'TREE 51', 'TREE 52', 'TREE 53', 'TREE 54', 'TREE 55', 'TREE 56', 'TREE 57', 'TREE 58', 'TREE 59', 'TREE 60', 'TREE 61', 'TREE 62', 'TREE 63', 'TREE 64', 'TREE 65', 'TREE 66', 'TREE 67', 'TREE 68', 'TREE 69', 'TREE 70', 'TREE 71', 'TREE 72', 'TREE 73', 'TREE 74', 'TREE 75', 'TREE 76', 'TREE 77', 'TREE 78', 'TREE 79', 'TREE 80', 'TREE 81', 'TREE 82', 'TREE 83', 'TREE 84', 'TREE 85', 'TREE 86', 'TREE 87', 'TREE 88', 'TREE 89', 'TREE 90', 'TREE 91', 'TREE 92', 'TREE 93', 'TREE 94', 'TREE 95', 'TREE 96', 'TREE 97', 'TREE 98', 'TREE 99', 'TREE 100'. A scale bar at the bottom right indicates 0, 20, 40, 60, 80m. A north arrow is also present.

EIS APPENDIX - LANDSCAPE DRAWINGS
TWEED VALLEY HOSPITAL
771 Cudgen Road, Cudgen

DWG. L-EIS-1 | Rev A - 17.10.2018

Prepared for: NSW Health Infrastructure | Prepared by: Turf Design Studio

NSW

Health

Infrastructure

Health

Northern NSW

Local Health District

turf

DESIGN