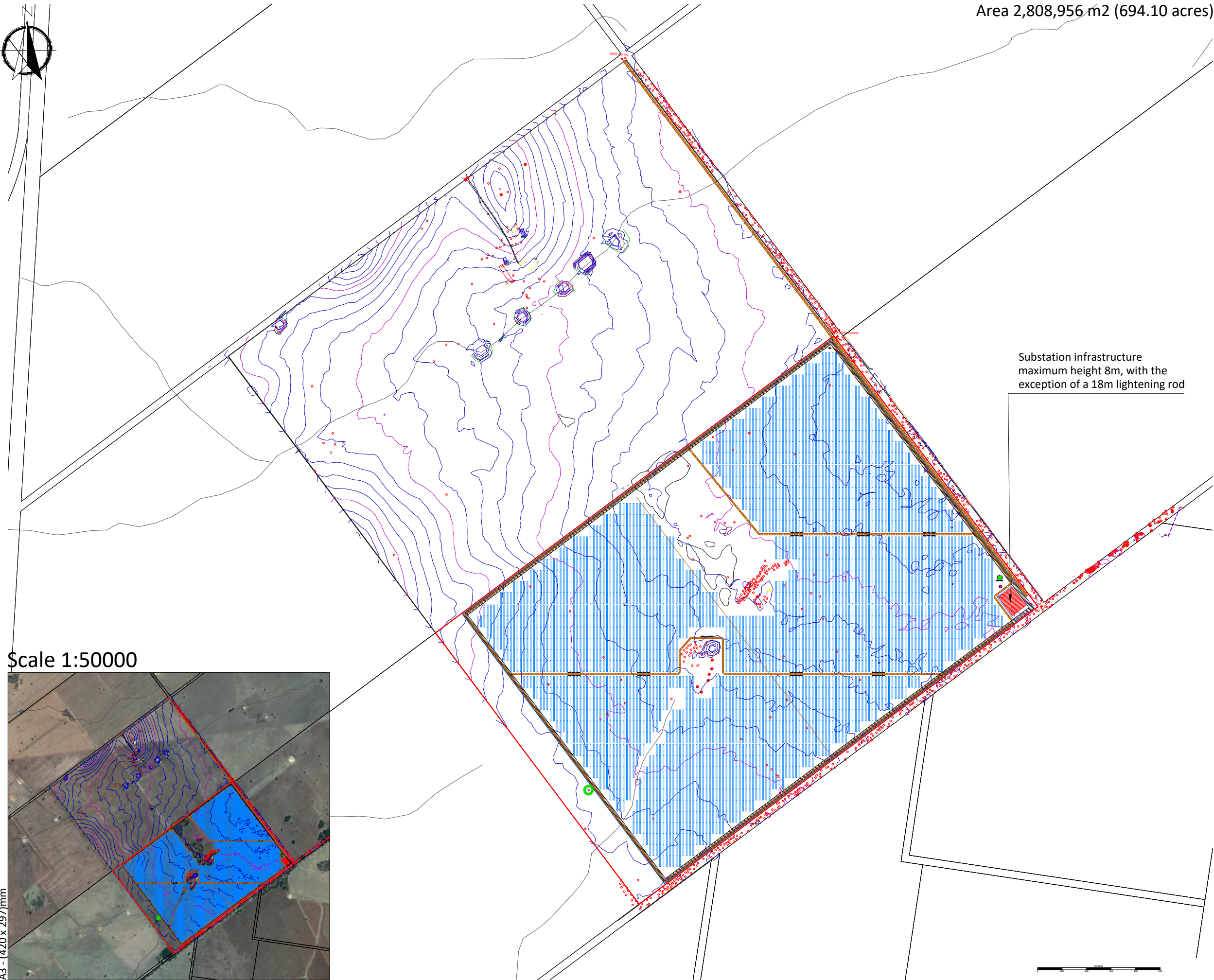


Area 2,808,956 m2 (694.10 acres)





	Site Access
	Site Boundary
	Security Fence
	Single Axis Tracker 45 x 2
	Inverter Transformer TwinSkid
	Batteries
	Area for Substation
	Customer Substation
	Monitoring House
	Storage
	Access Road
	Access Gates
	CCTV
	45,000L Water Tank
	15m Fire Break
	WWSF Bee Tree Buffer

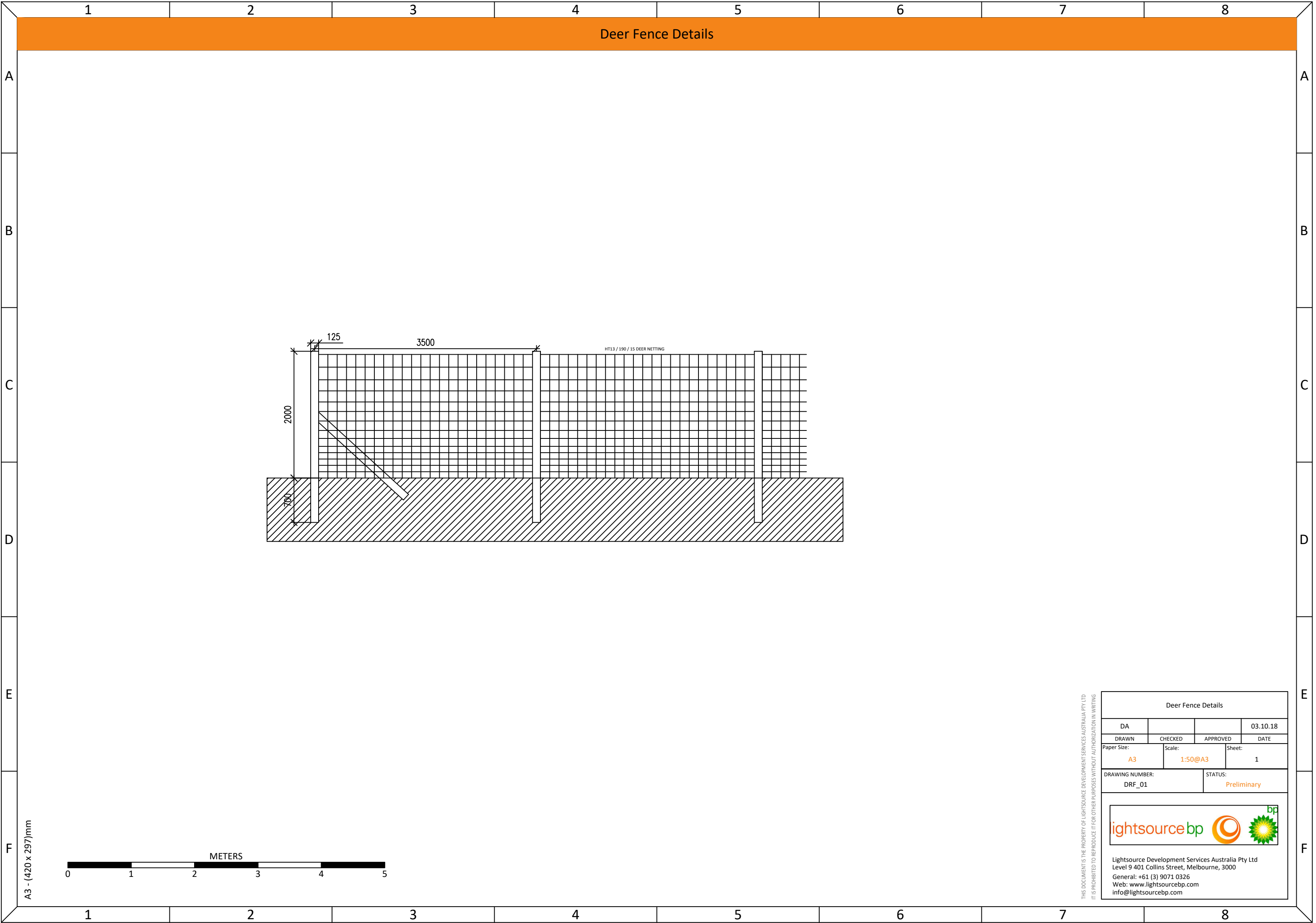
Substation infrastructure  
maximum height 8m, with the  
exception of a 18m lightening rod

Scale 1:50000





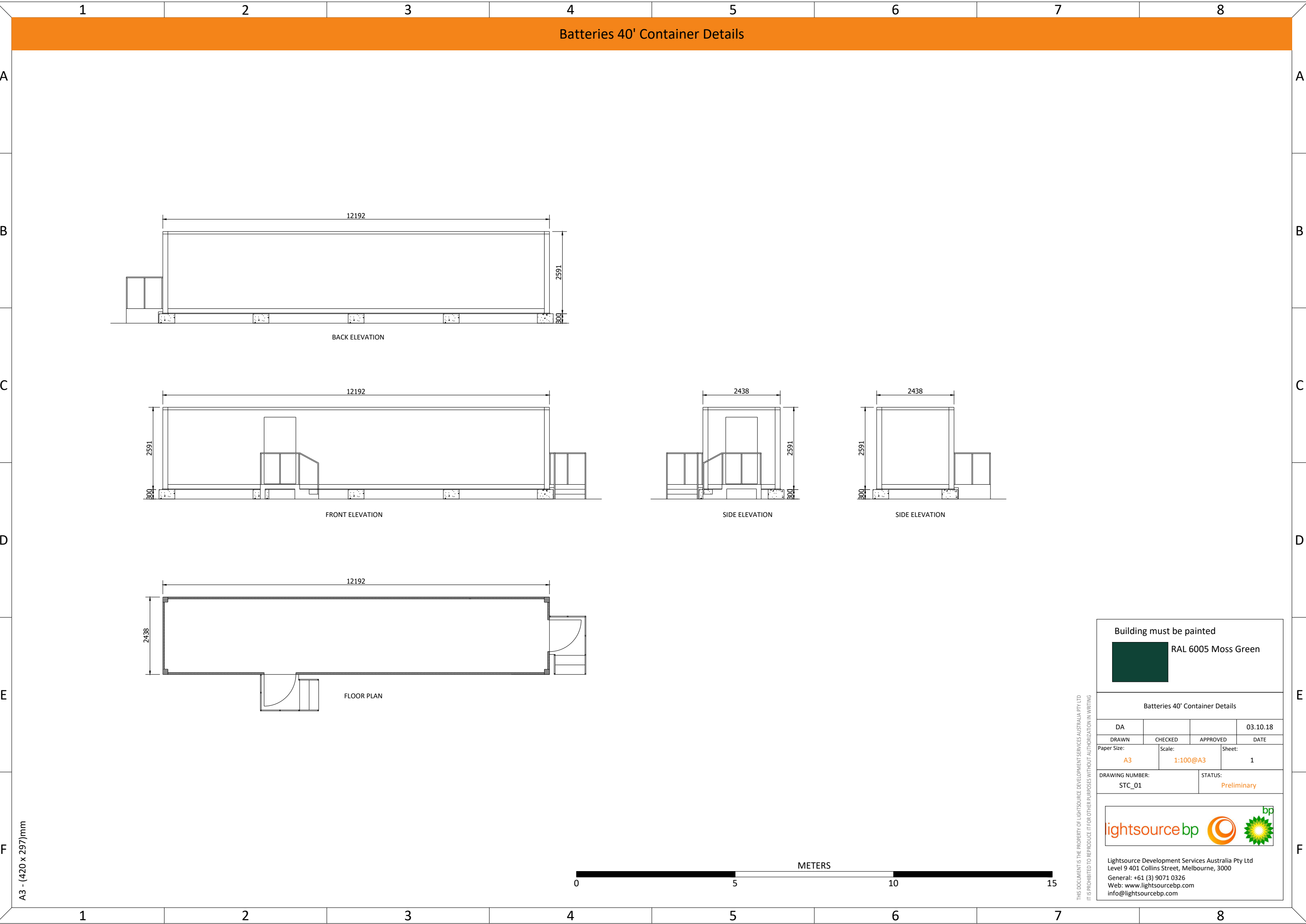
GM			18.05.18
DRAWN	CHECKED	APPROVED	DATE
PROJECT NAME & ADDRESS:			
Australia			
NOTES:			
-			
-			
-			
-			
-			
Paper Size:	Scale:	Sheet:	
A3	1:15000	1	
CAPACITY:			
90 MW AC			
DRAWING TITLE:			
Wyalong_Proposed_Layout_Rev15_v2			
DRAWING NUMBER:		STATUS:	
WLG_01		Preliminary	
<div><div>lightsourcebp</div><div></div></div> <p>Lightsource Development Services Australia Pty Limited, Level 9, 401 Collins Street Melbourne, 3000 General: +61 3 9071 0326 Web: <a href="http://www.lightsourcebp.com">www.lightsourcebp.com</a> <a href="mailto:info@lightsourcebp.com">info@lightsourcebp.com</a></p>			

THIS DOCUMENT IS THE PROPERTY OF LIGHTSOURCE DEVELOPMENT SERVICES AUSTRALIA PTY LTD  
IT IS PROHIBITED TO REPRODUCE IT FOR OTHER PURPOSES WITHOUT AUTHORIZATION IN WRITING



THIS DOCUMENT IS THE PROPERTY OF LIGHTSOURCE DEVELOPMENT SERVICES AUSTRALIA PTY LTD  
IT IS PROHIBITED TO REPRODUCE IT FOR OTHER PURPOSES WITHOUT AUTHORIZATION IN WRITING

Deer Fence Details			
DA			03.10.18
DRAWN	CHECKED	APPROVED	DATE
Paper Size: A3	Scale: 1:50@A3	Sheet: 1	
DRAWING NUMBER: DRF_01		STATUS: Preliminary	
<div><div>ightsourcebp</div><div></div></div> <p>Lightsource Development Services Australia Pty Ltd Level 9 401 Collins Street, Melbourne, 3000 General: +61 (3) 9071 0326 Web: <a href="http://www.lightsourcebp.com">www.lightsourcebp.com</a> info@lightsourcebp.com</p>			



Building must be painted

RAL 6005 Moss Green

Batteries 40' Container Details			
DA			03.10.18
DRAWN	CHECKED	APPROVED	DATE
Paper Size: A3	Scale: 1:100@A3	Sheet: 1	
DRAWING NUMBER: STC_01		STATUS: Preliminary	

lightsourcebp

Lightsource Development Services Australia Pty Ltd

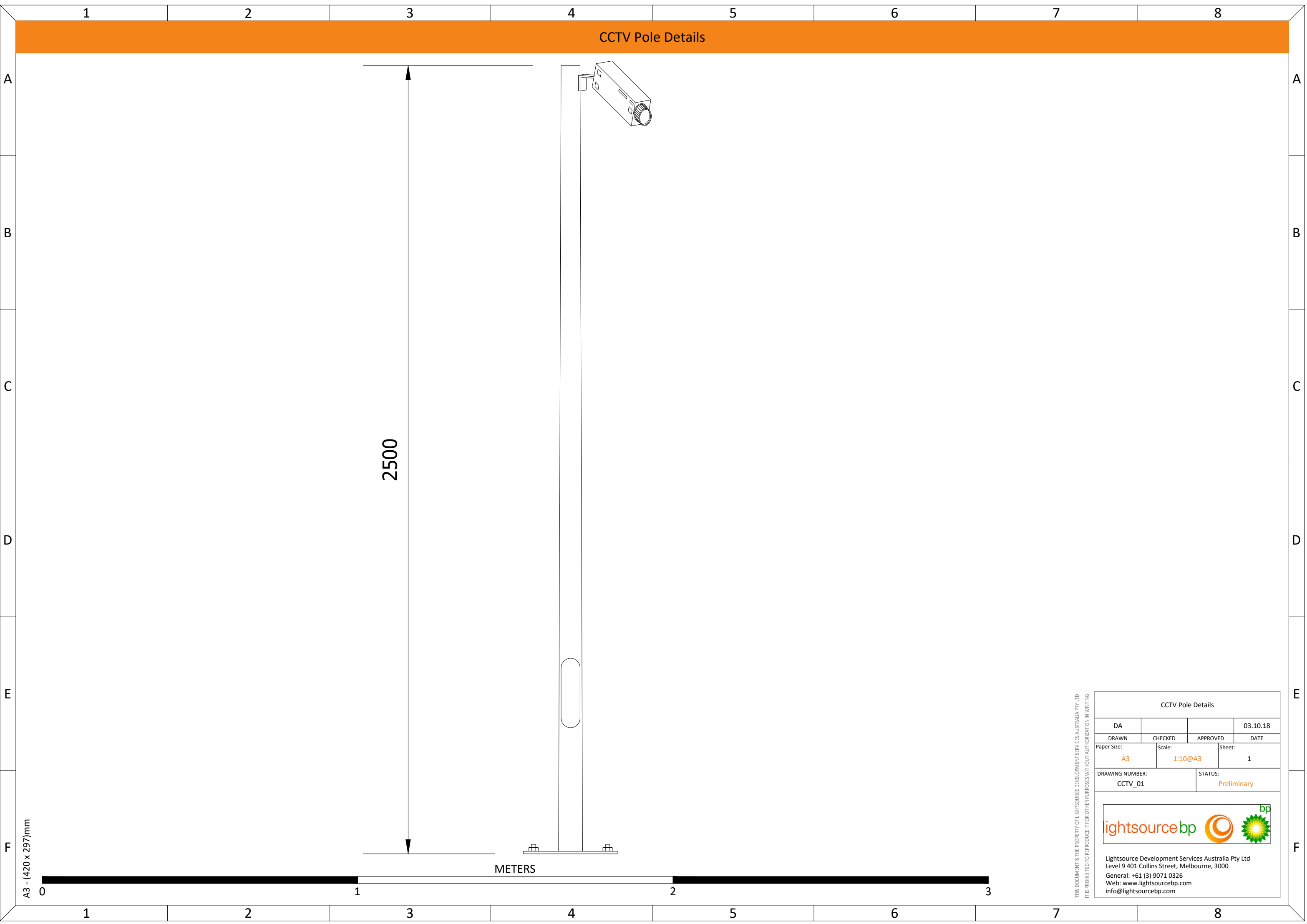
Level 9 401 Collins Street, Melbourne, 3000

General: +61 (3) 9071 0326



Web: [www.lightsourcebp.com](http://www.lightsourcebp.com)

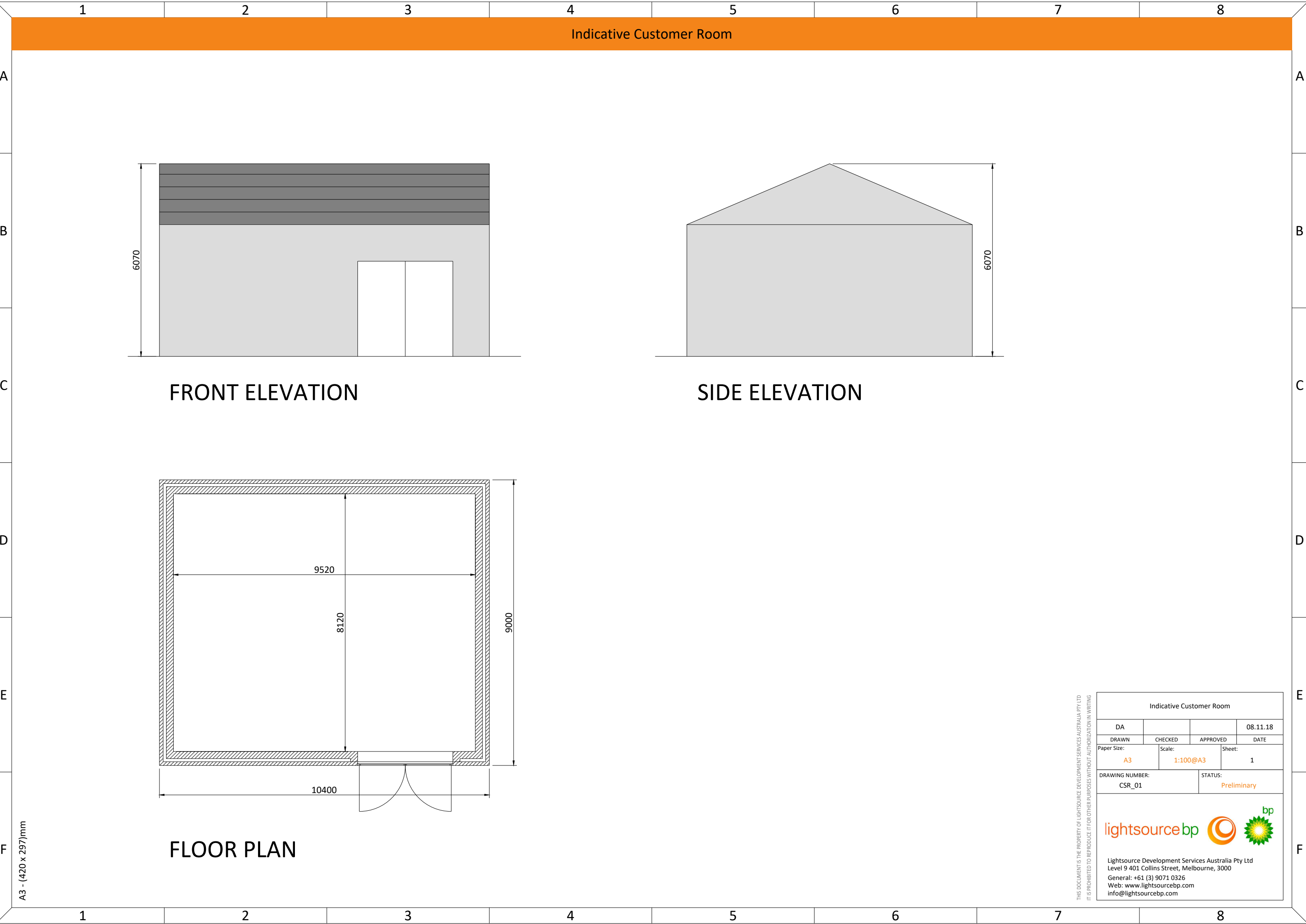
[info@lightsourcebp.com](mailto:info@lightsourcebp.com)

THIS DOCUMENT IS THE PROPERTY OF LIGHTSOURCE DEVELOPMENT SERVICES AUSTRALIA PTY LTD  
IT IS PROHIBITED TO REPRODUCE IT FOR OTHER PURPOSES WITHOUT AUTHORIZATION IN WRITING





THIS DOCUMENT IS THE PROPERTY OF LIGHTSOURCE DEVELOPMENT SERVICES AUSTRALIA PTY LTD  
IT IS PROHIBITED TO REPRODUCE IT FOR OTHER PURPOSES WITHOUT AUTHORIZATION IN WRITING

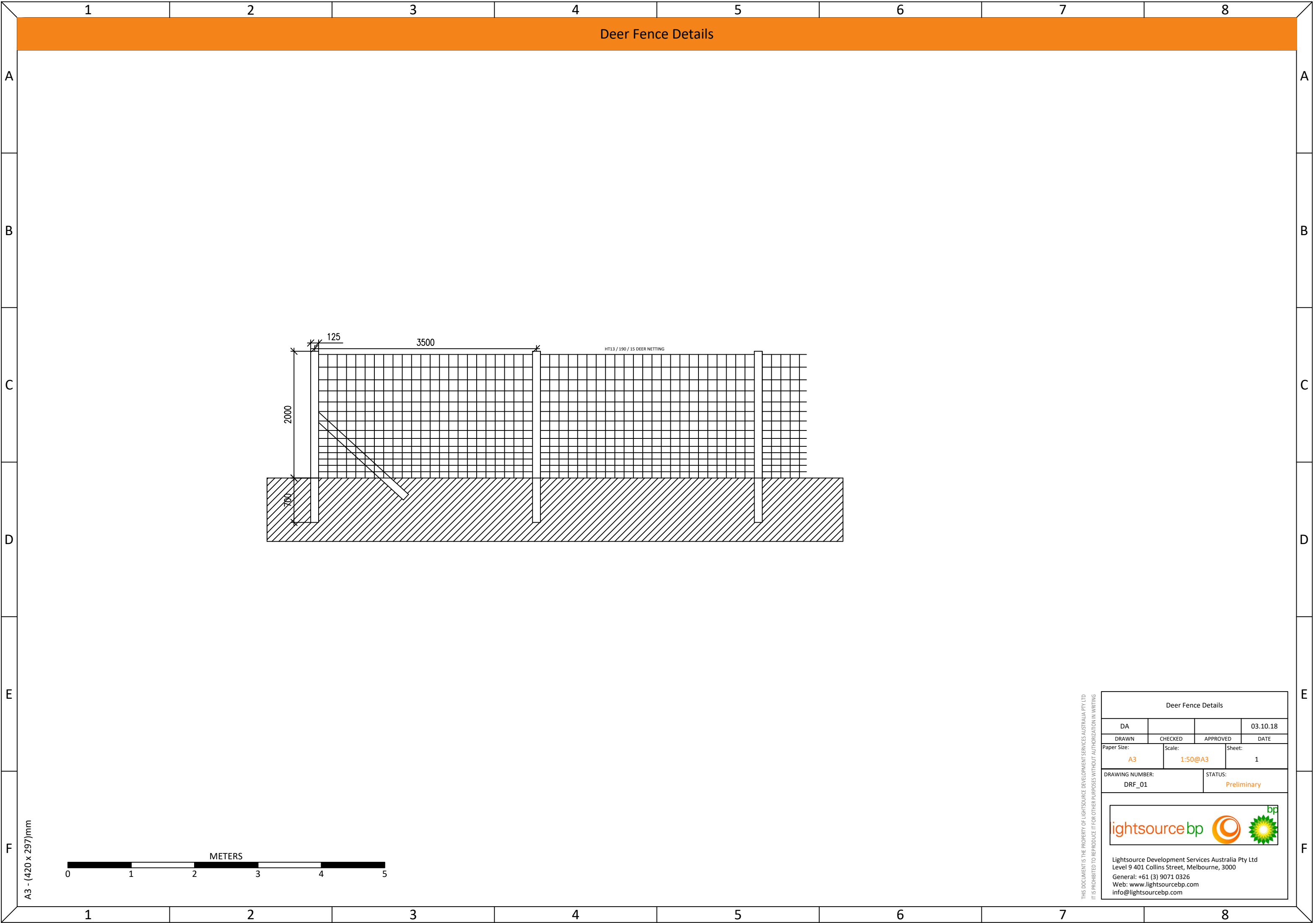
CCTV Pole Details			
DA			03.10.18
DRAWN	CHECKED	APPROVED	DATE
Paper Size: A3		Scale: 1:10@A3	Sheet: 1
DRAWING NUMBER: CCTV_01		STATUS: Preliminary	
<div><div>lightsource</div><div>bp</div><div></div><div></div></div> <p>Lightsource Development Services Australia Pty Ltd Level 9 401 Collins Street, Melbourne, 3000 General: +61 (3) 9071 0326 Web: <a href="http://www.lightsourcebp.com">www.lightsourcebp.com</a> info@lightsourcebp.com</p>			



A3 - (420 x 297)mm

THIS DOCUMENT IS THE PROPERTY OF LIGHTSOURCE DEVELOPMENT SERVICES AUSTRALIA PTY LTD  
IT IS PROHIBITED TO REPRODUCE IT FOR OTHER PURPOSES WITHOUT AUTHORIZATION IN WRITING

Indicative Customer Room			
DA			08.11.18
DRAWN	CHECKED	APPROVED	DATE
Paper Size: A3		Scale: 1:100@A3	Sheet: 1
DRAWING NUMBER: CSR_01		STATUS: Preliminary	
<div><div>lightsourcebp</div><div></div></div> <p>Lightsource Development Services Australia Pty Ltd Level 9 401 Collins Street, Melbourne, 3000 General: +61 (3) 9071 0326 Web: <a href="http://www.lightsourcebp.com">www.lightsourcebp.com</a> info@lightsourcebp.com</p>			





A3 - (420 x 297)mm



Deer Fence Details

DA			03.10.18
DRAWN	CHECKED	APPROVED	DATE
Paper Size: A3	Scale: 1:50@A3	Sheet: 1	
DRAWING NUMBER: DRF_01		STATUS: Preliminary	

ightsourcebp



Lightsource Development Services Australia Pty Ltd

Level 9 401 Collins Street, Melbourne, 3000

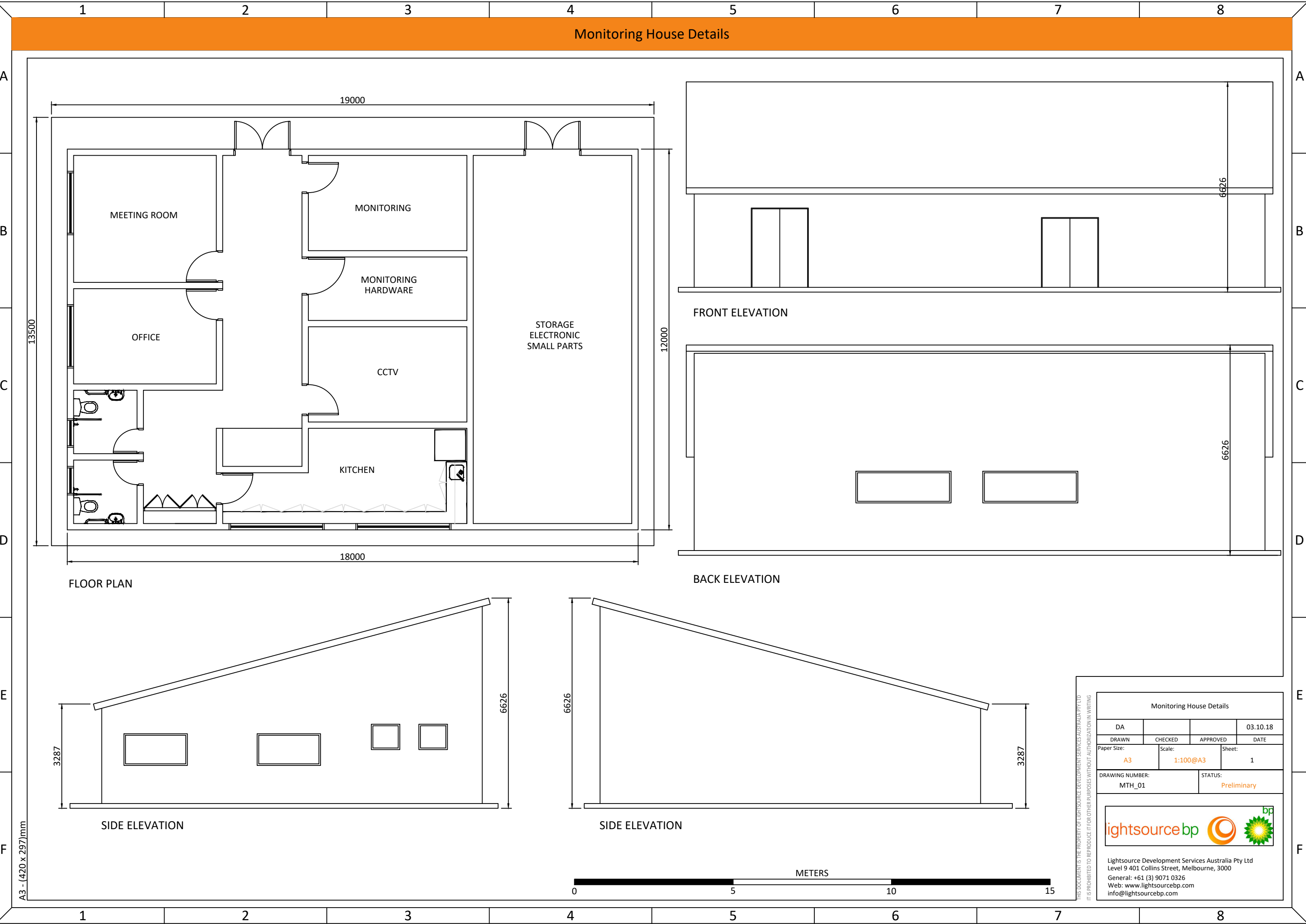
General: +61 (3) 9071 0326

Web: [www.lightsourcebp.com](http://www.lightsourcebp.com)

[info@lightsourcebp.com](mailto:info@lightsourcebp.com)

THIS DOCUMENT IS THE PROPERTY OF LIGHTSOURCE DEVELOPMENT SERVICES AUSTRALIA PTY LTD

IT IS PROHIBITED TO REPRODUCE IT FOR OTHER PURPOSES WITHOUT AUTHORIZATION IN WRITING



Monitoring House Details

MEETING ROOM

MONITORING

MONITORING  
HARDWARE

OFFICE

CCTV

KITCHEN

STORAGE  
ELECTRONIC  
SMALL PARTS

FRONT ELEVATION

BACK ELEVATION

SIDE ELEVATION



SIDE ELEVATION

METERS

Monitoring House Details

DA			03.10.18
DRAWN	CHECKED	APPROVED	DATE
Paper Size: A3	Scale: 1:100@A3	Sheet: 1	
DRAWING NUMBER: MTH_01		STATUS: Preliminary	

ightsourcebp



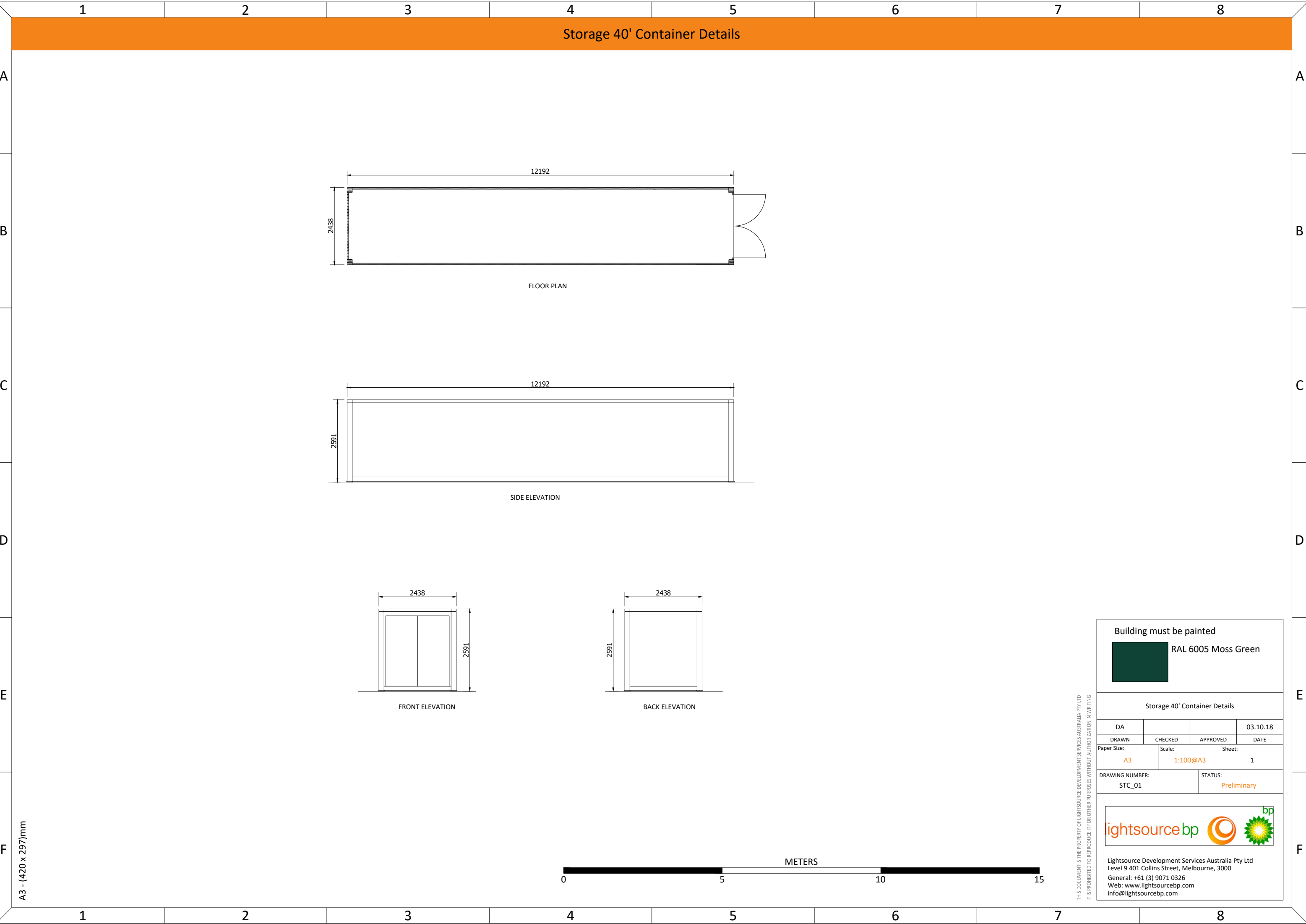
Lightsource Development Services Australia Pty Ltd

Level 9 401 Collins Street, Melbourne, 3000

General: +61 (3) 9071 0326

Web: [www.lightsourcebp.com](http://www.lightsourcebp.com)

[info@lightsourcebp.com](mailto:info@lightsourcebp.com)



THIS DOCUMENT IS THE PROPERTY OF LIGHTSOURCE DEVELOPMENT SERVICES AUSTRALIA PTY LTD  
IT IS PROHIBITED TO REPRODUCE IT FOR OTHER PURPOSES WITHOUT AUTHORIZATION IN WRITING

Building must be painted

RAL 6005 Moss Green

Storage 40' Container Details			
DA			03.10.18
DRAWN	CHECKED	APPROVED	DATE
Paper Size: A3		Scale: 1:100@A3	Sheet: 1
DRAWING NUMBER: STC_01		STATUS: Preliminary	

lightsourcebp

Lightsource Development Services Australia Pty Ltd

Level 9 401 Collins Street, Melbourne, 3000

General: +61 (3) 9071 0326

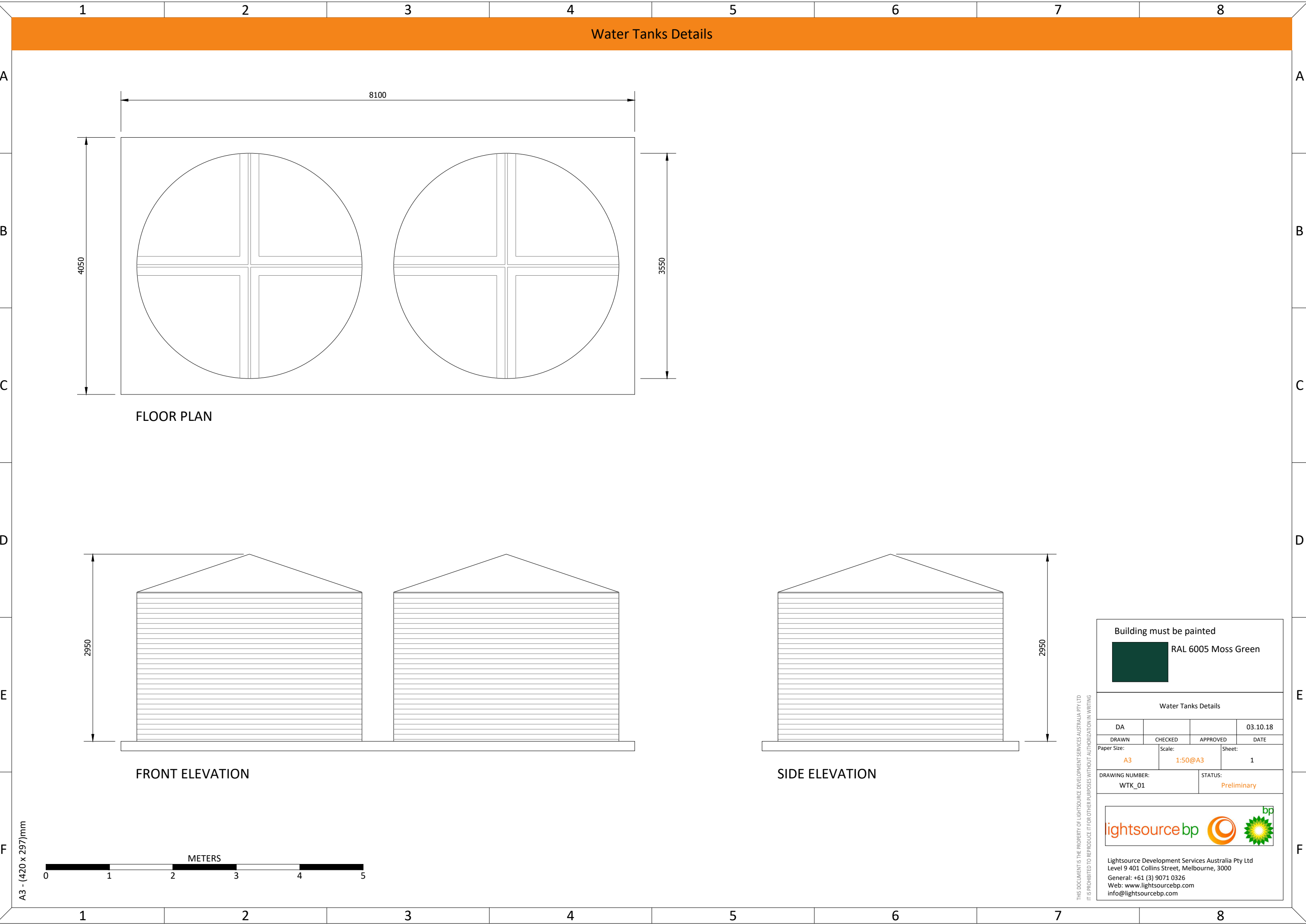
Web: [www.lightsourcebp.com](http://www.lightsourcebp.com)

[info@lightsourcebp.com](mailto:info@lightsourcebp.com)

A3 - (420 x 297)mm








Water Tanks Details

FLOOR PLAN

FRONT ELEVATION

SIDE ELEVATION



Building must be painted



RAL 6005 Moss Green

Water Tanks Details			
DA			03.10.18
DRAWN	CHECKED	APPROVED	DATE
Paper Size: A3	Scale: 1:50@A3	Sheet: 1	
DRAWING NUMBER: WTK_01		STATUS: Preliminary	

lightsourcebp



Lightsource Development Services Australia Pty Ltd  
Level 9 401 Collins Street, Melbourne, 3000  
General: +61 (3) 9071 0326  
Web: [www.lightsourcebp.com](http://www.lightsourcebp.com)  
info@lightsourcebp.com

THIS DOCUMENT IS THE PROPERTY OF LIGHTSOURCE DEVELOPMENT SERVICES AUSTRALIA PTY LTD  
IT IS PROHIBITED TO REPRODUCE IT FOR OTHER PURPOSES WITHOUT AUTHORIZATION IN WRITING

1

2

3

4

5

6

7

8

Inverter-Transformer TwinSkid Details

A

B

C

D

E

F

A

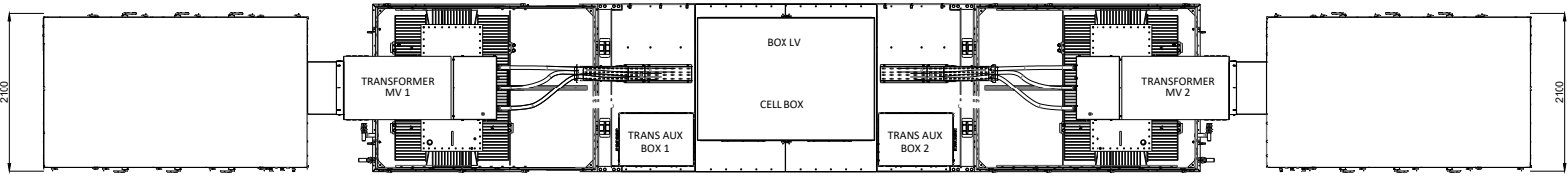
B

C

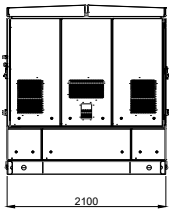
D

E

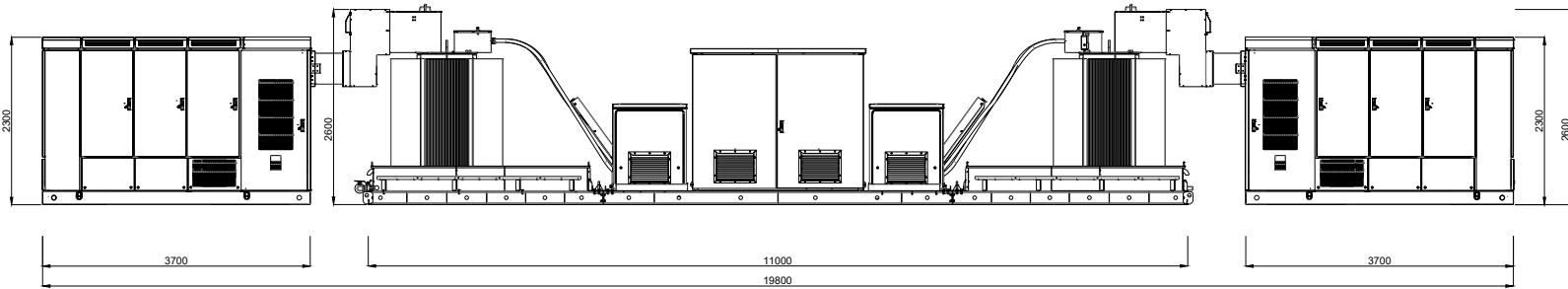
F



TOP VIEW



SIDE VIEW



FRONT VIEW

A3 - (420 x 297)mm



Building must be painted  
RAL 6005 Moss Green

Inverter-Transformer TwinSkid Details

DA			03.10.18
DRAWN	CHECKED	APPROVED	DATE
Paper Size: A3	Scale: 1:100@A3	Sheet: 1	

DRAWING NUMBER: TWS\_01 STATUS: Preliminary



Lightsource Development Services Australia Pty Ltd  
Level 9 401 Collins Street, Melbourne, 3000  
General: +61 (3) 9071 0326  
Web: www.lightsourcebp.com  
info@lightsourcebp.com

THIS DOCUMENT IS THE PROPERTY OF LIGHTSOURCE DEVELOPMENT SERVICES AUSTRALIA PTY LTD  
IT IS PROHIBITED TO REPRODUCE IT FOR OTHER PURPOSES WITHOUT AUTHORIZATION IN WRITING