

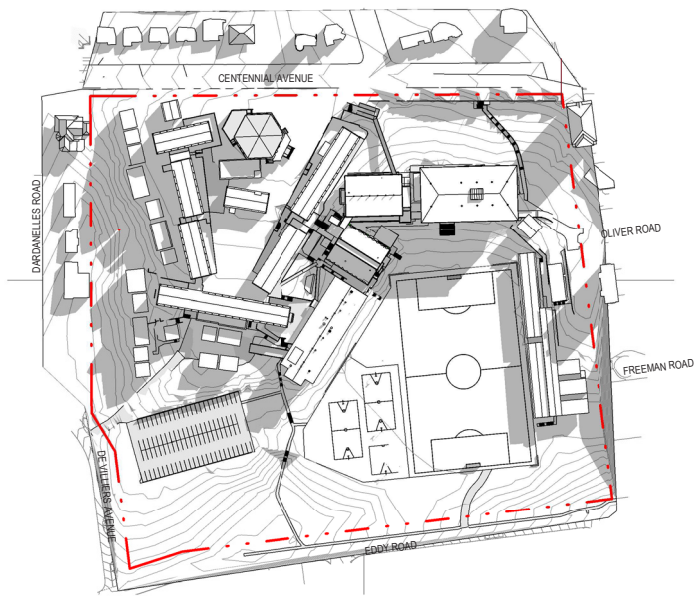


Centennial Avenue Campus - Shadow Studies - June 21

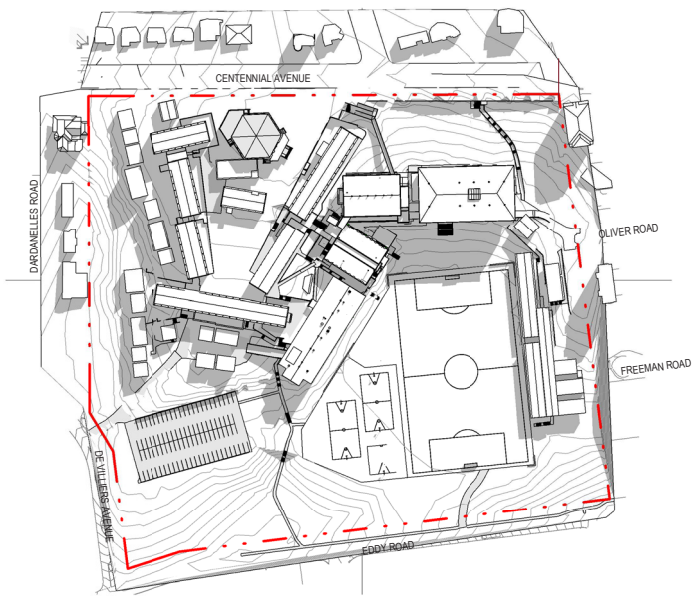
The following diagrams show an analysis of the existing sun shadows compared to the sun shadows of the proposed development on the Chatswood High School site. These diagrams illustrate sun shadows during the winter solstice, the most prominent time of year for sun angles.

During the mornings in winter, the sun shadows of the new Building T & Building S along thw western cause minimal shadows external to the site in comparison to the existing conditions of the buildings & trees - by 11:00am the surrounding areas are in sun in both the existing and proposed scenarios.

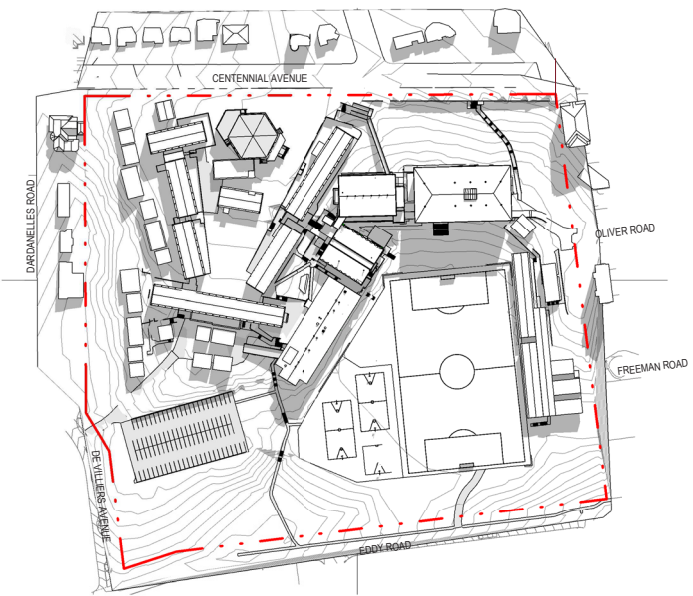
Internal to the site, the new Buildings provide some additional shade to the outdoor areas for sun protection, with a good ratio of sun versus shade during recess times.



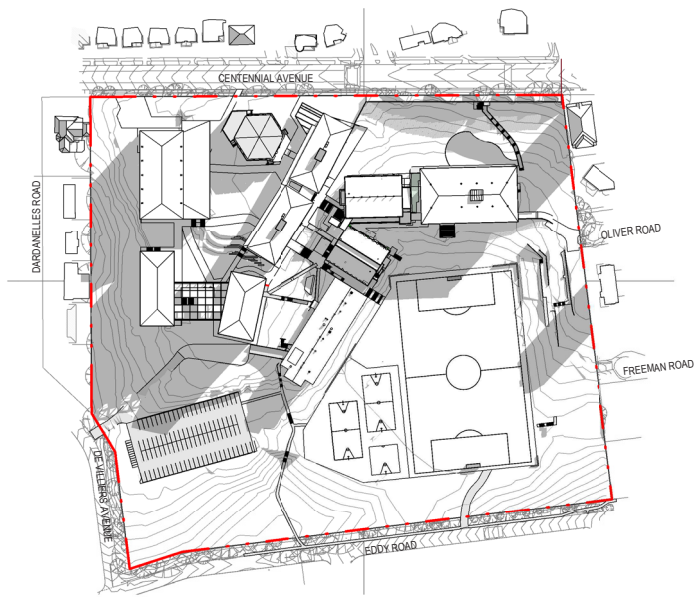
Existing Site - 9AM



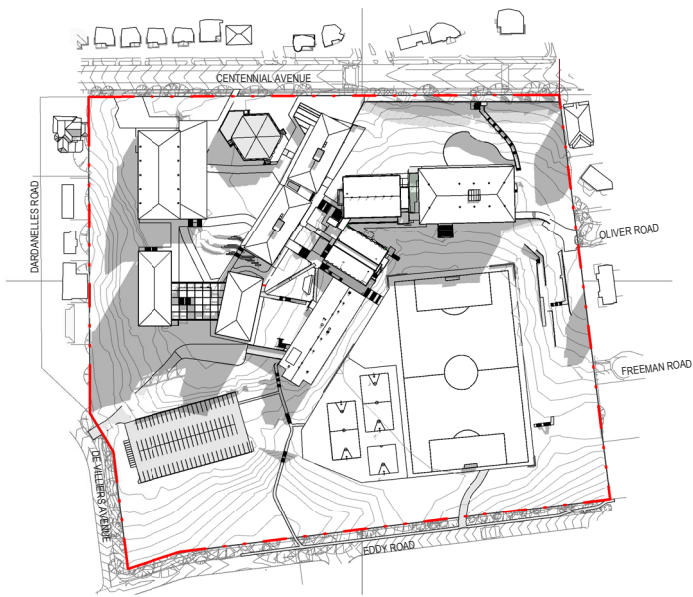
Existing Site - 10AM



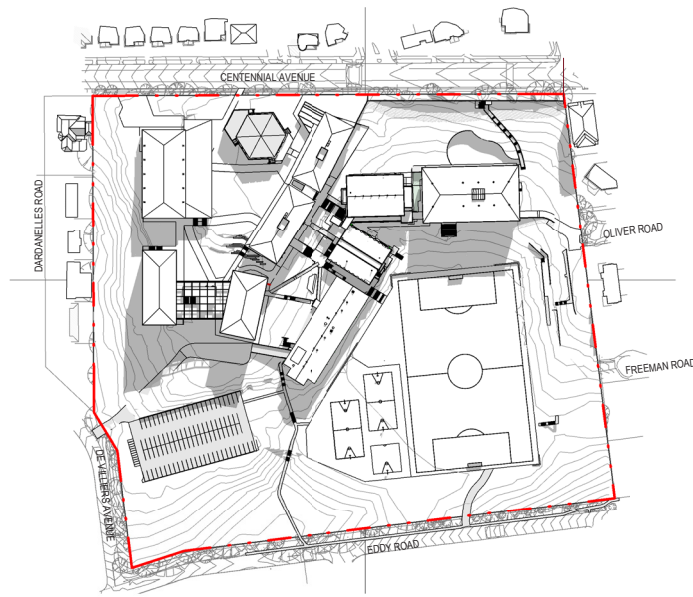
Existing Site - 11AM



Proposed Site - 9AM

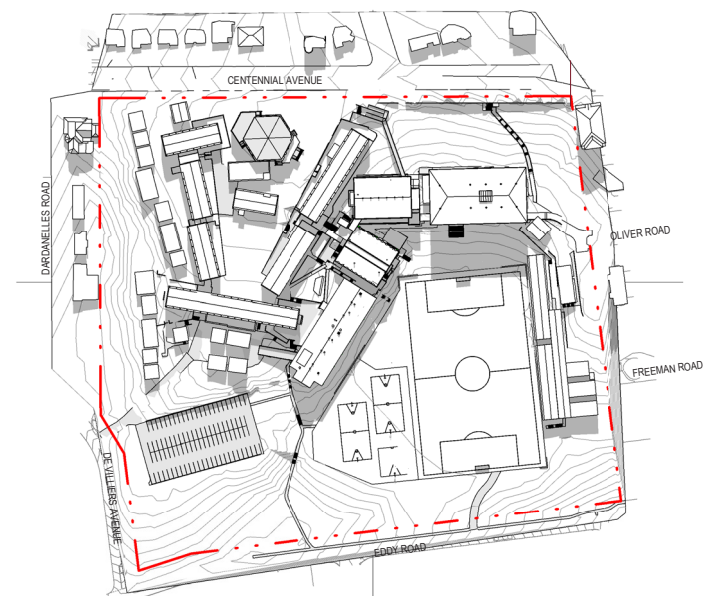


Proposed Site - 10AM

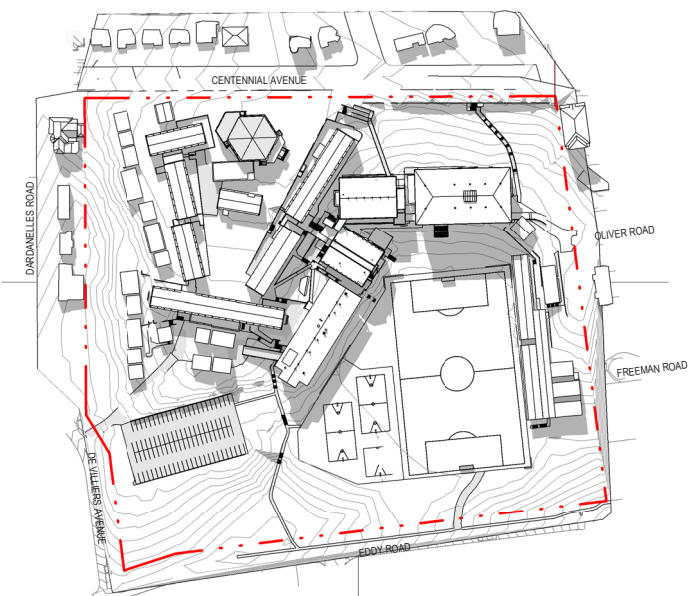


Proposed Site - 11AM

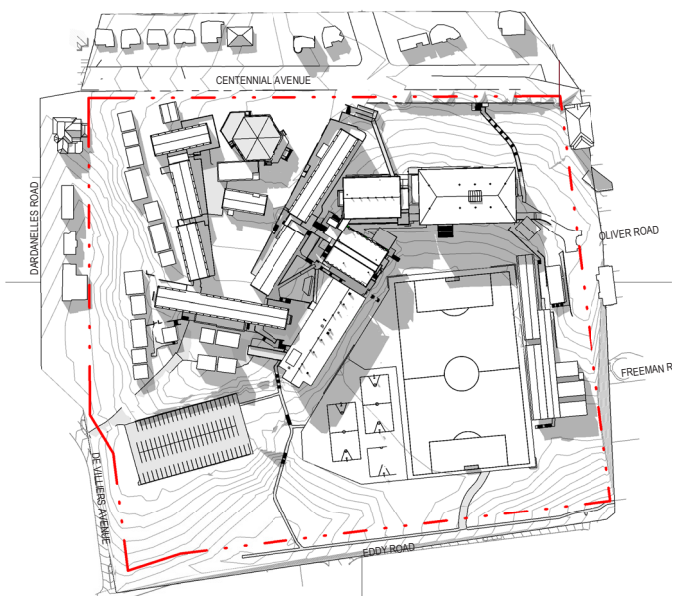
Built Form and Urban Design



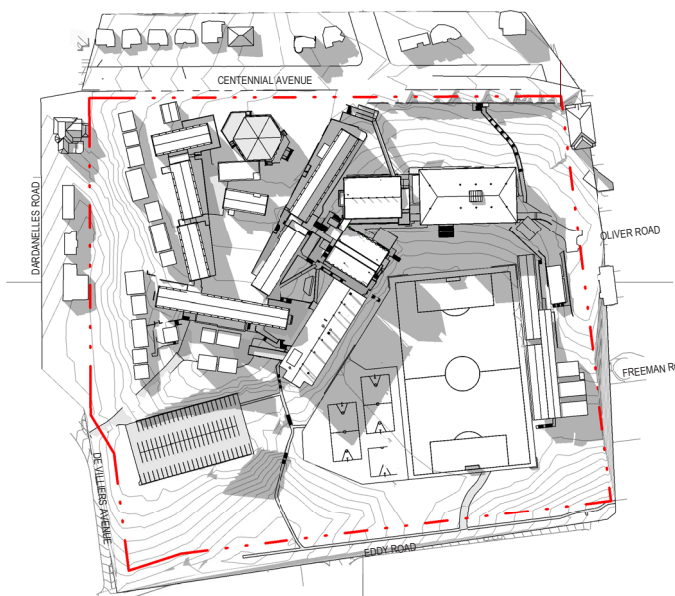
Existing Site - 12PM



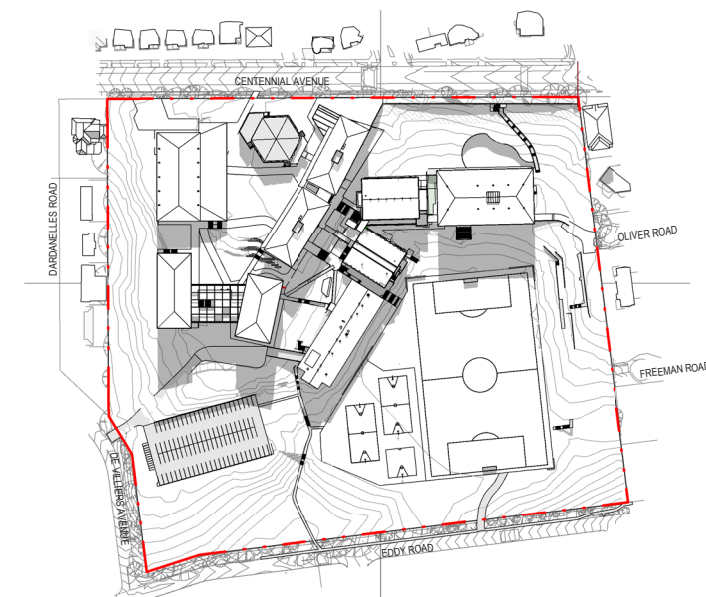
Existing Site - 1PM



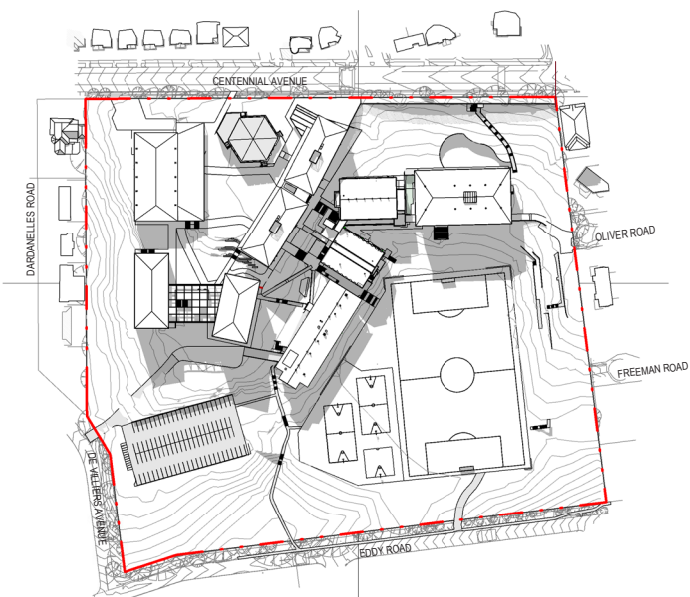
Existing Site - 2PM



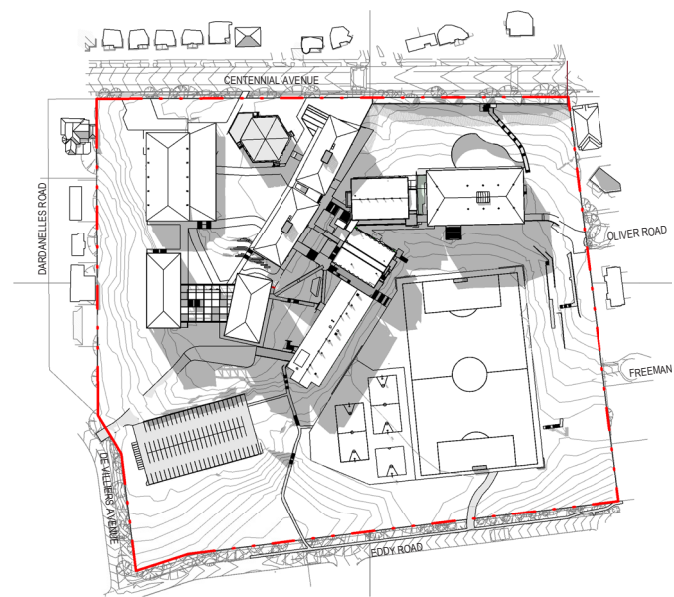
Existing Site - 3PM



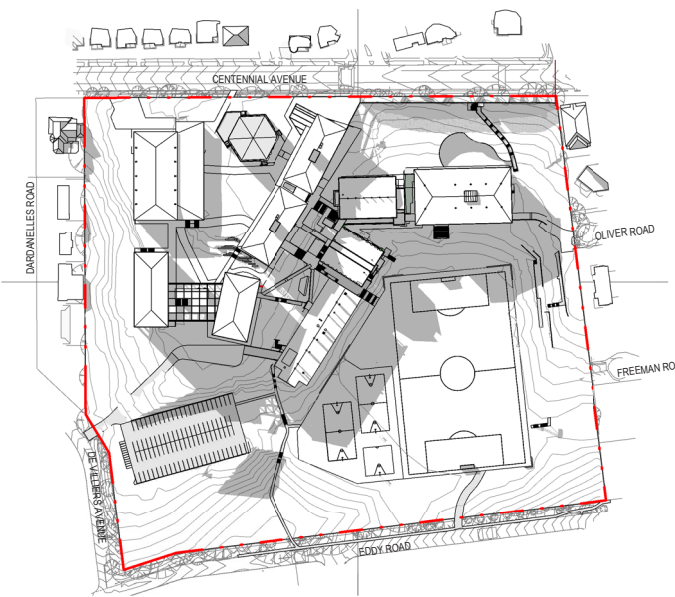
Proposed Site - 12PM



Proposed Site - 1PM



Proposed Site - 2PM

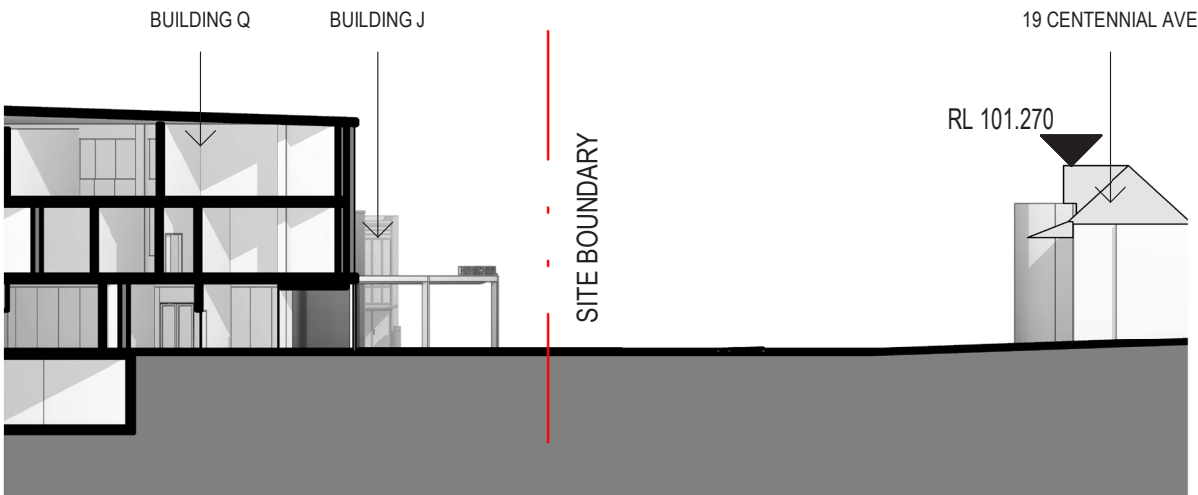
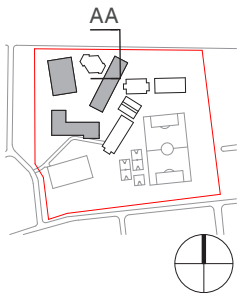


Proposed Site - 3PM

Built Form and Urban Design



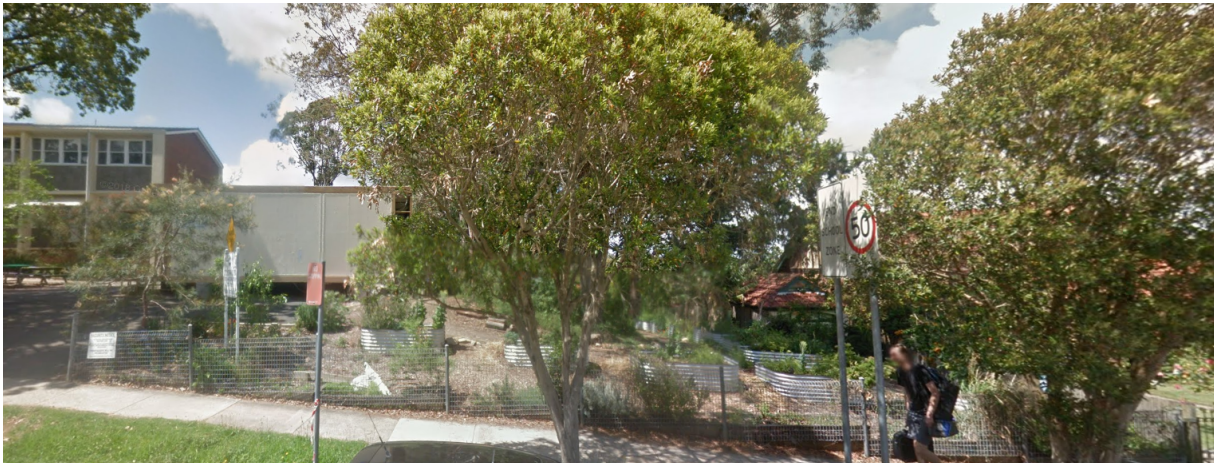
Key Heritage Interfaces



Section AA - Through No. 19 Centennial Ave & Building Q



1. View towards No. 19 Centennial Ave from Street



2. View towards No. 60 Centennial Ave & existing site from Street



3. View from No. 38 Centennial Ave, Front of Property

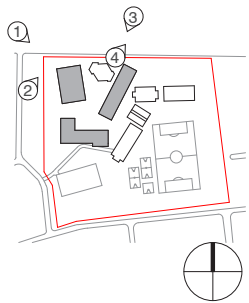


4. View towards No. 60 Centennial Ave from Street

Built Form and Urban Design



Key Heritage Interfaces

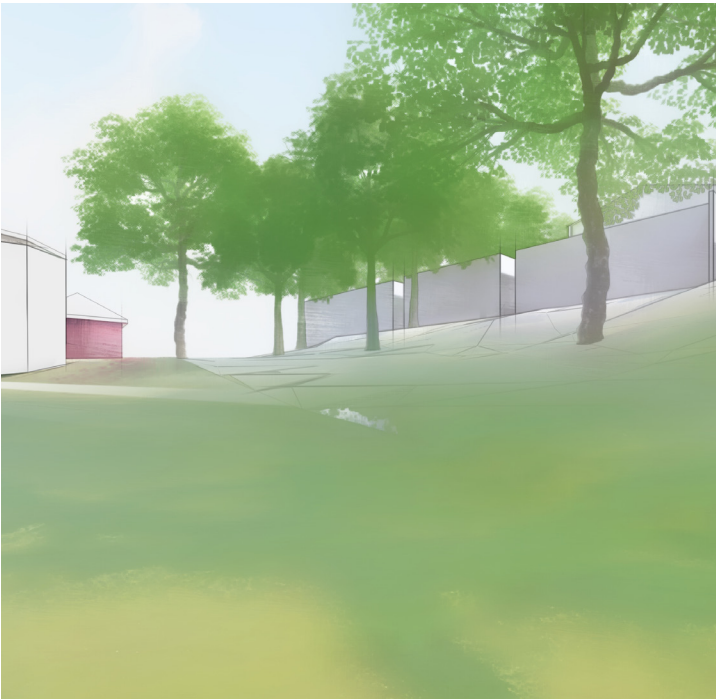


1. View towards Bush Campus from 60 Centennial Ave.



EXISTING

2. View towards Bush Campus from the back of 60 Centennial Ave.



EXISTING

3. View towards front of Bush Campus from 19 Centennial Ave.



EXISTING

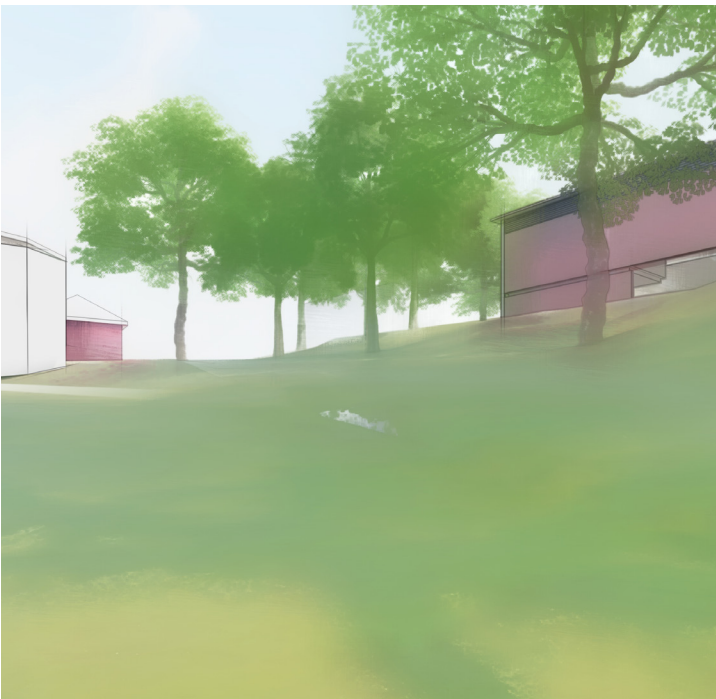
4. View towards 19 Centennial ave from Bush Campus.



EXISTING



PROPOSED



PROPOSED



PROPOSED



PROPOSED

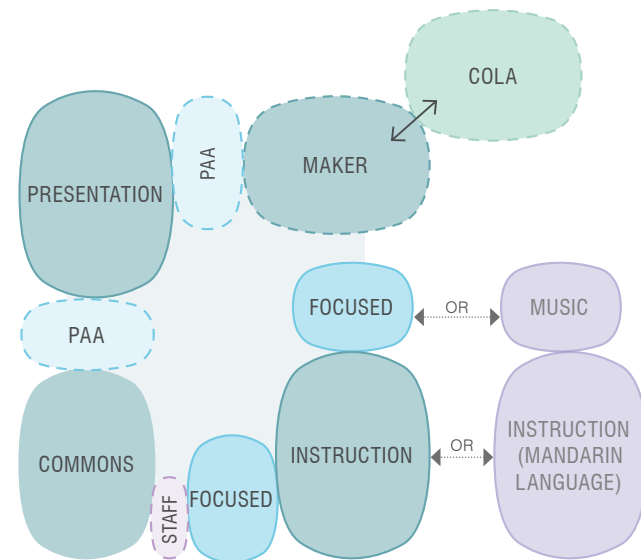


Image:
View of Chatswood High School New Building S Rooftop COLA Space.

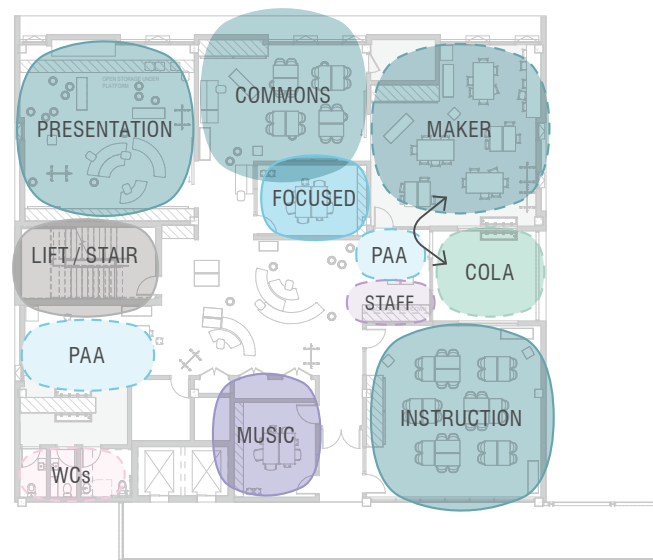
08
Pedagogy

City Campus - Site Organisation

Learning Community Model

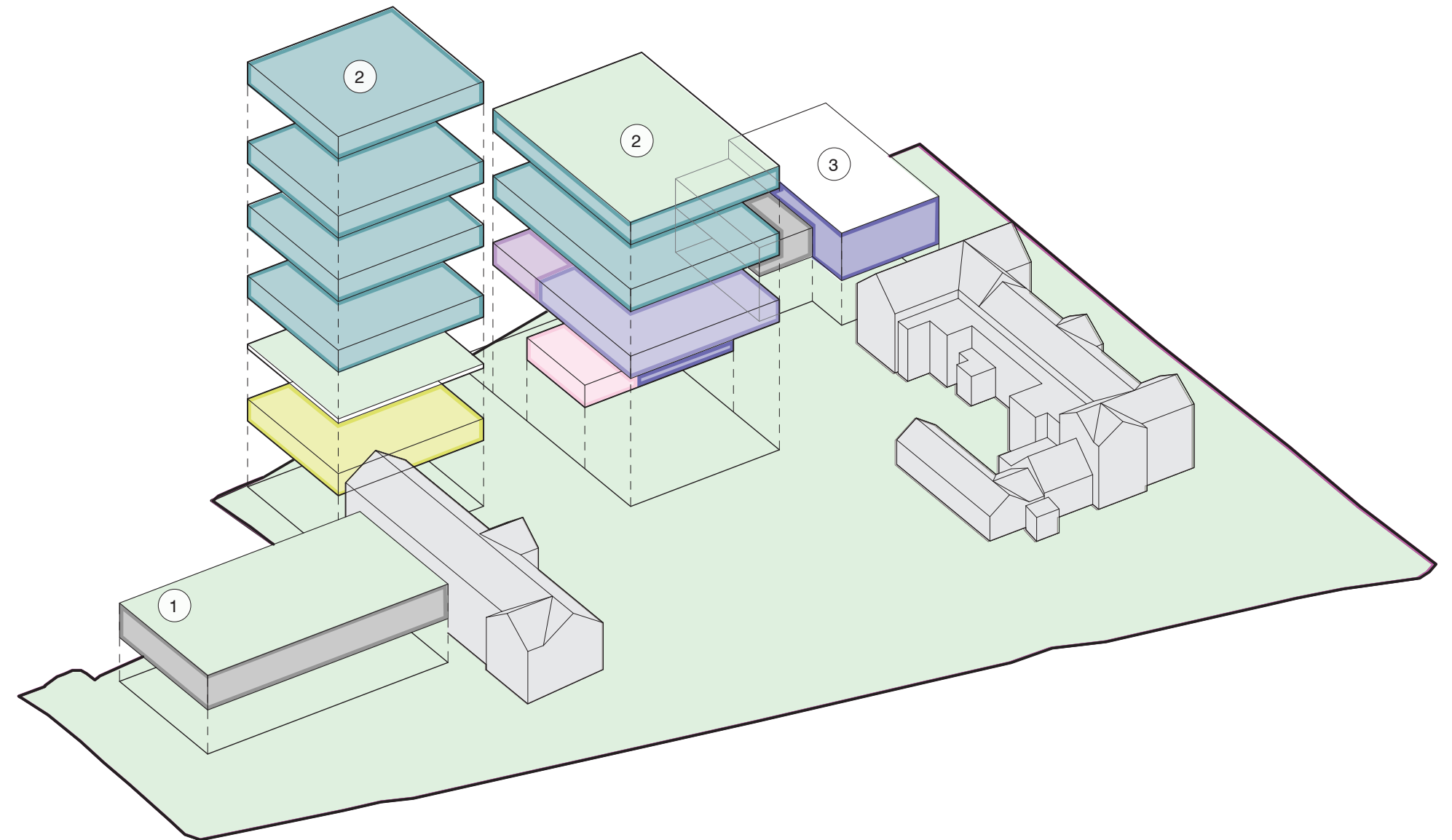


Learning Community Example



The diagram above shows an example of a typical Learning Community with the education model overlay.

Site Organisation



① Carpark

- Carpark + Drop-off
- Rooftop Courts
- Store

② Buildings P1 + P2

- Home Bases
- Special Support Unit
- Staff
- Library
- Canteen
- Student Amenities

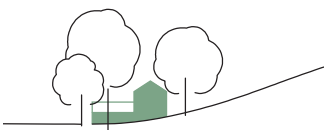
③ Building G

- Communal Hall
- OHSC
- Store

Legend

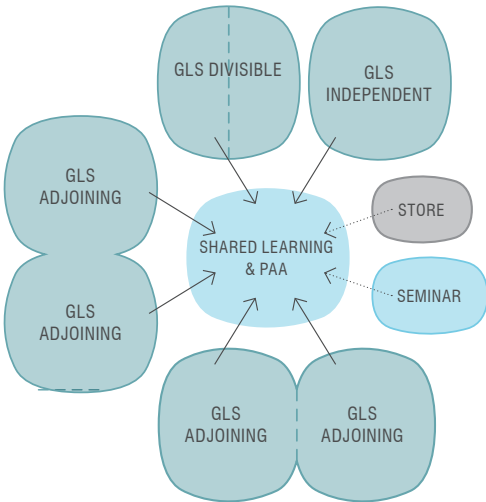
- Home Base
- Special Support
- Library
- Hall / Canteen
- Staff
- Amenities

Pedagogy

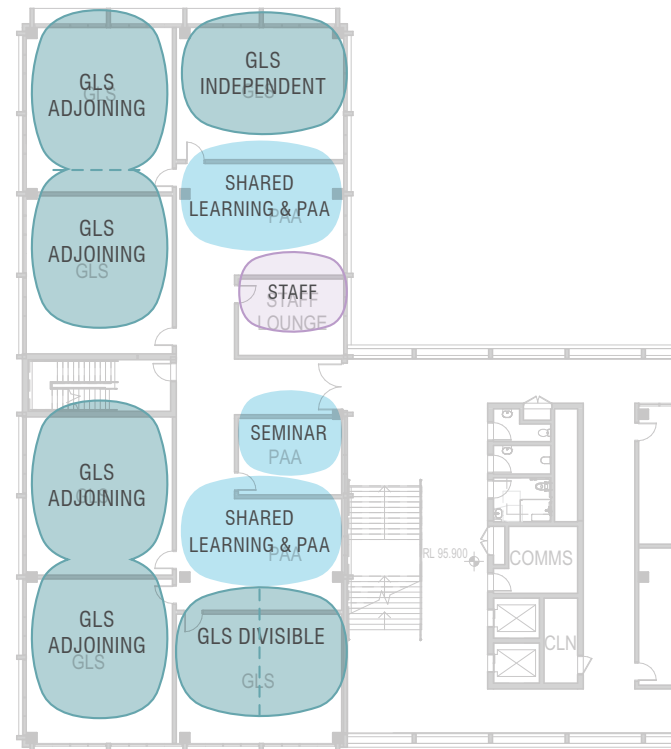


Bush Campus - Site Organisation

Learning Neighbourhood Model

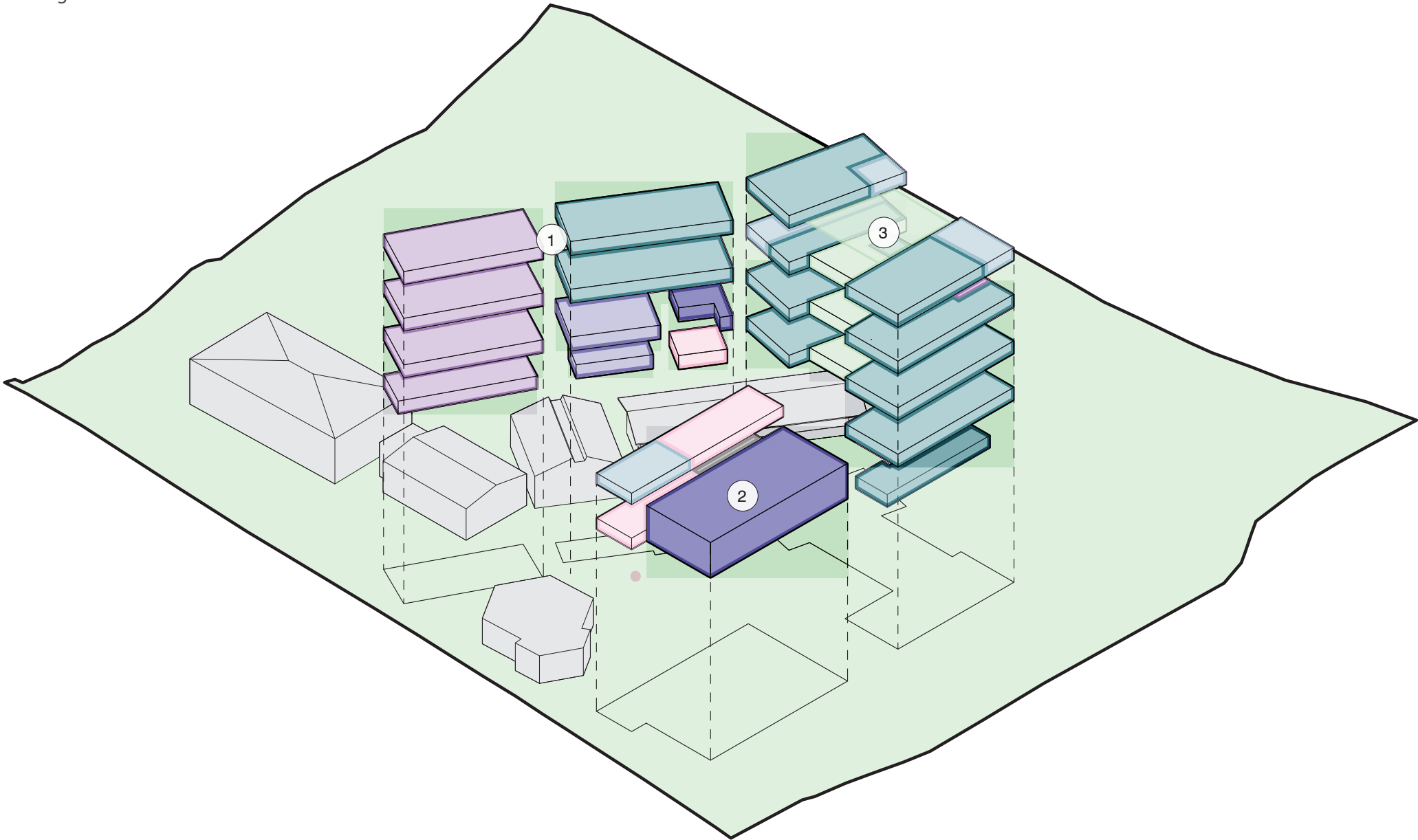


Learning Community Example



*GLS = General Learning Space

Site Organisation



- 1 Building Q
- Admin
 - Staff
 - General Learning
 - Library
 - Canteen

- 2 Building T
- Hall
 - Movement Studio

- 3 Building S
- Specialist Learning
 - General Learning

- Legend
- General Learning
 - Specialist Spaces
 - Special Support
 - Library
 - Hall / Canteen
 - Staff
 - Amenities

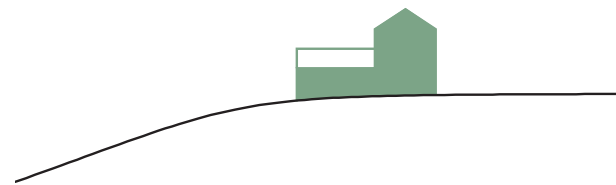


Image
View of Chatswood High School New Buildings from Central Courtyard Space

09
Facade &
Materiality

9 Facade & Materiality

Pacific Highway - City Campus



City Campus Materials

The following selection are chosen as the base building elements for new buildings across both City and Bush campuses. The materials will be used as a response to the unique constraints and opportunities each site has to offer while keeping a clear project identity.

Concrete

Framing device used by most new buildings

Brick

Facades and solid elements used for new buildings

Glass

Glazing element

Steel

Material chosen for screening elements including ballustrades, fencing and wiring used for climbing plants.



Concrete

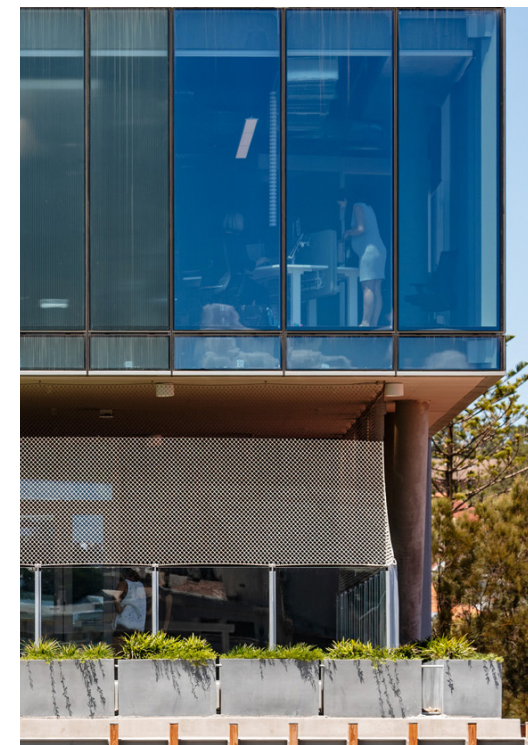
CF01 - Concrete



Brick

BR01 - Common Brickwork

BR02 - Feature Brickwork



Glass

WT01 - External Glazing System

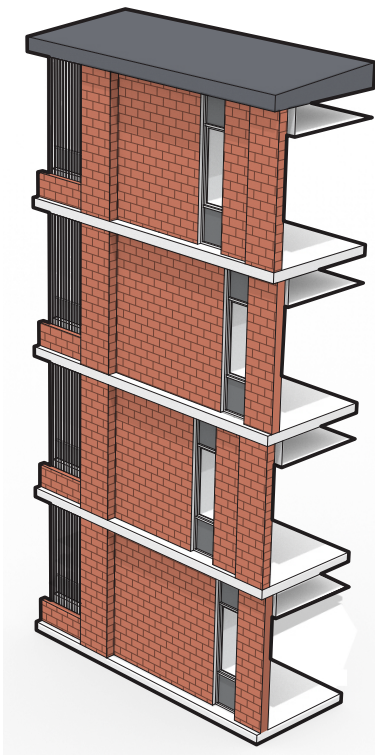


Steel & Aluminium

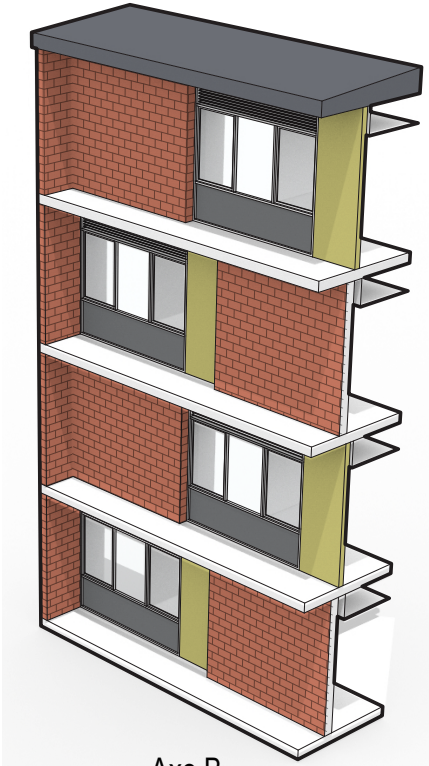
AM11 - Steel Mesh Screening

CD01 - External Metal Cladding

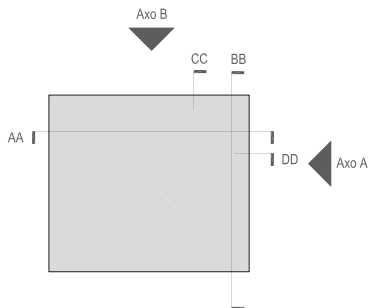
Facade & Materiality



Axo A



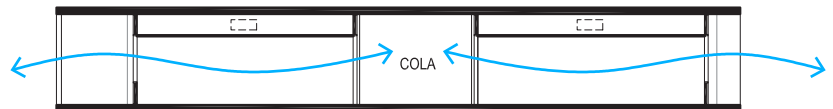
Axo B



Cell Mode - Section AA



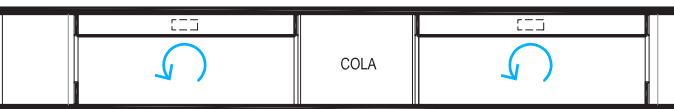
Open Mode - Section AA



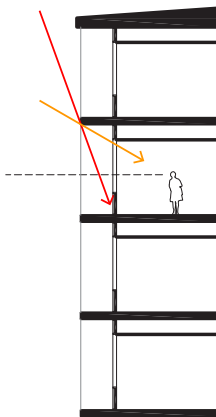
Open Mode - Section BB



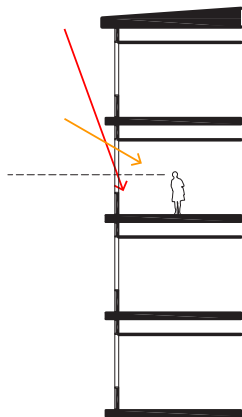
Cell Mode - Section AA



Cell Mode - Section BB



Section CC



Section DD

Facade & Materiality



Pacific Highway - Facade Concept

Articulated Brick (East + West Facades) ●

Articulated Brick Facade to interface with Heritage buildings present on the Pacific Highway Site.

Privacy to and from neighbours

Reduce harsh sunlight

Transparent + Playful (North + South Facades) ●

Highly glazed to increase passive natural lighting

Links views from teaching buildings to outdoor spaces within the school

Hilights the significant views out towards the Lane Cove region.

Concrete Podium ●

Anchors building

Connects building to landscape

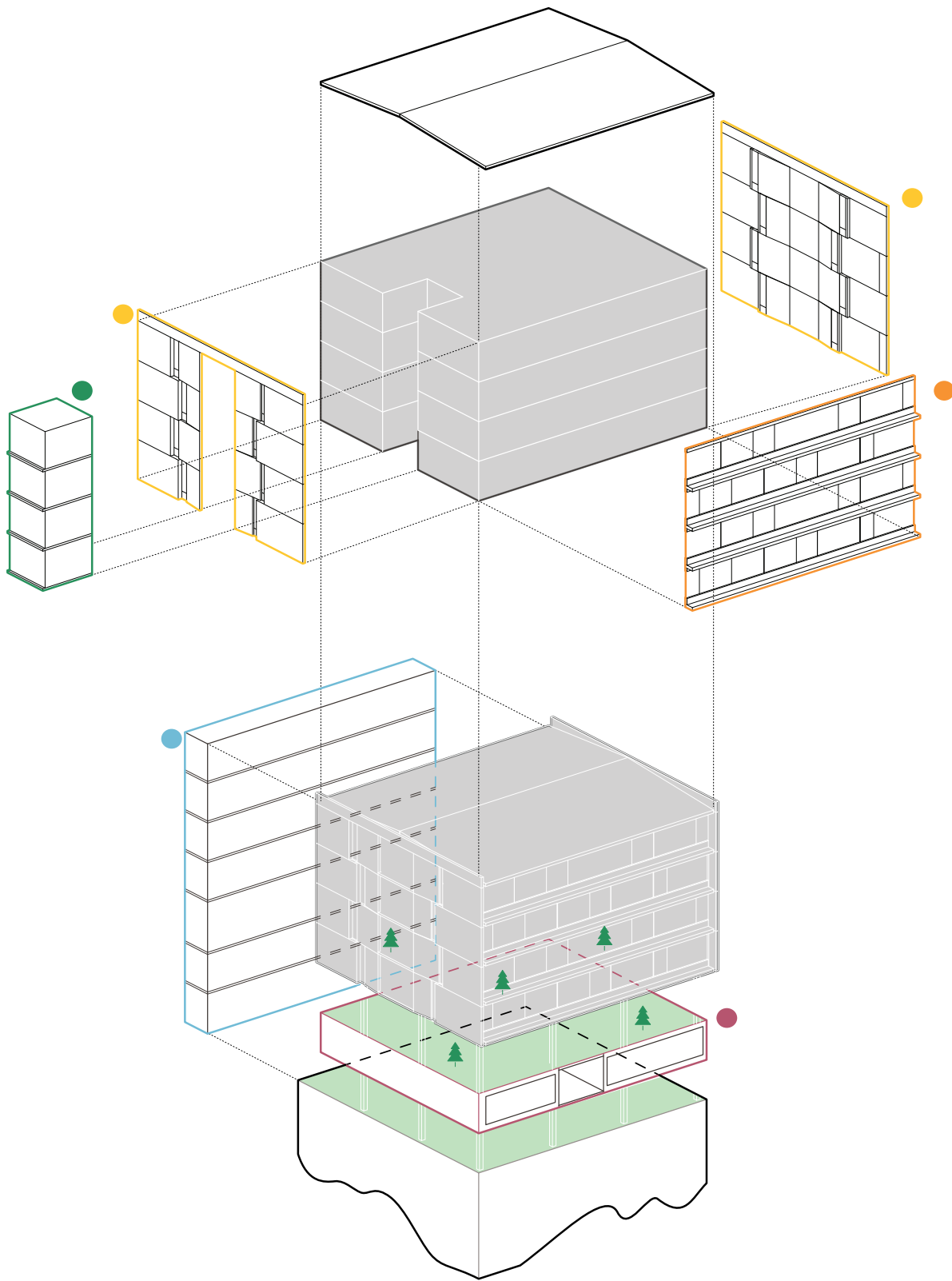
‘Green Cut-Outs’ ●

Distributes open Green spaces through the vertical buildings.

Ventilation?

Link Bridge ●

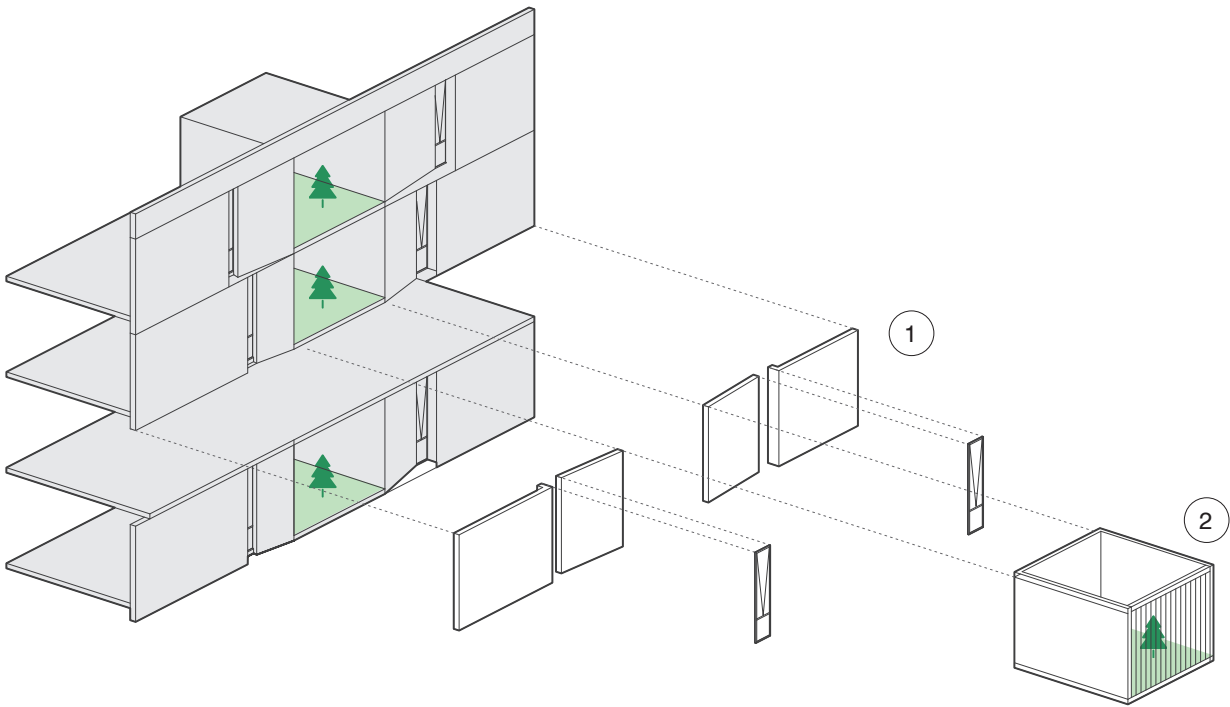
Equal access



Facade & Materiality



Pacific Highway - East/ West Facade



The East and West Facade provides a solid flank framing the building volume.

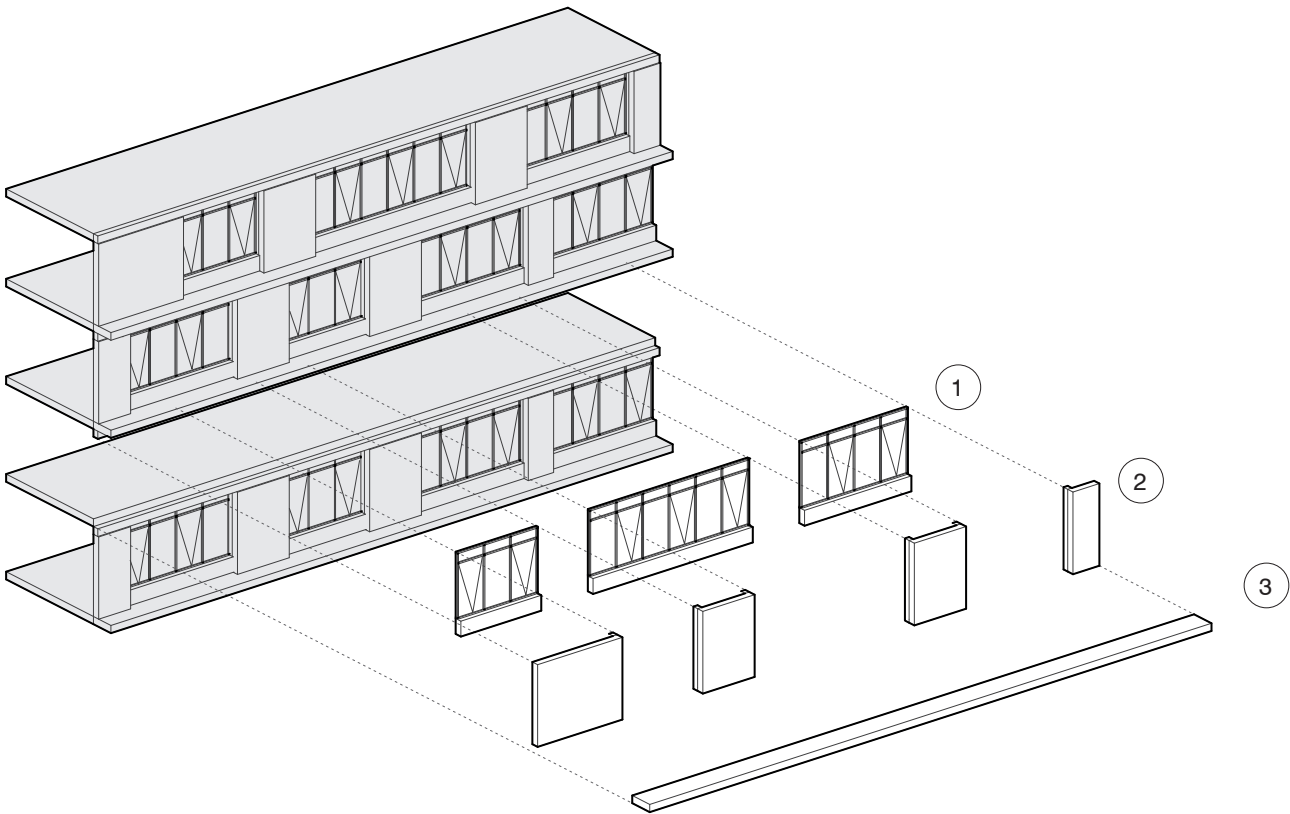
The kit of part includes:

Brick

An articulated and solid edge with narrow glazing elements to control direct sunlight.

Green Cutouts

Provides opportunities for outdoor connections throughout a vertical building. A sense of privacy and enclosure is achieved through a screening device.



The North and South Facade are highly glazed to increase the opportunity for passive sunlighting into the building.

The kit of part includes:

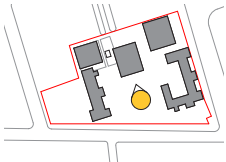
Brick

Articulated Brick 'pop-outs' to provide a playful rythm to the North and South Facades

Glazing Elements

Spandrel

Shading element to for sun control



Pacific Highway Campus - Southern View of Building P1 + P2

