




SYDNEY OLYMPIC PARK - SITE 2

Landscape Development Application
August 2019

ARCADIA



Arcadia respectfully acknowledges the traditional custodians of the land upon which Site 2 A+B stands today, the Wann-gal Clan. We honour elders past, present and emerging whose knowledge and wisdom will ensure the continuation of cultures and traditional practices.

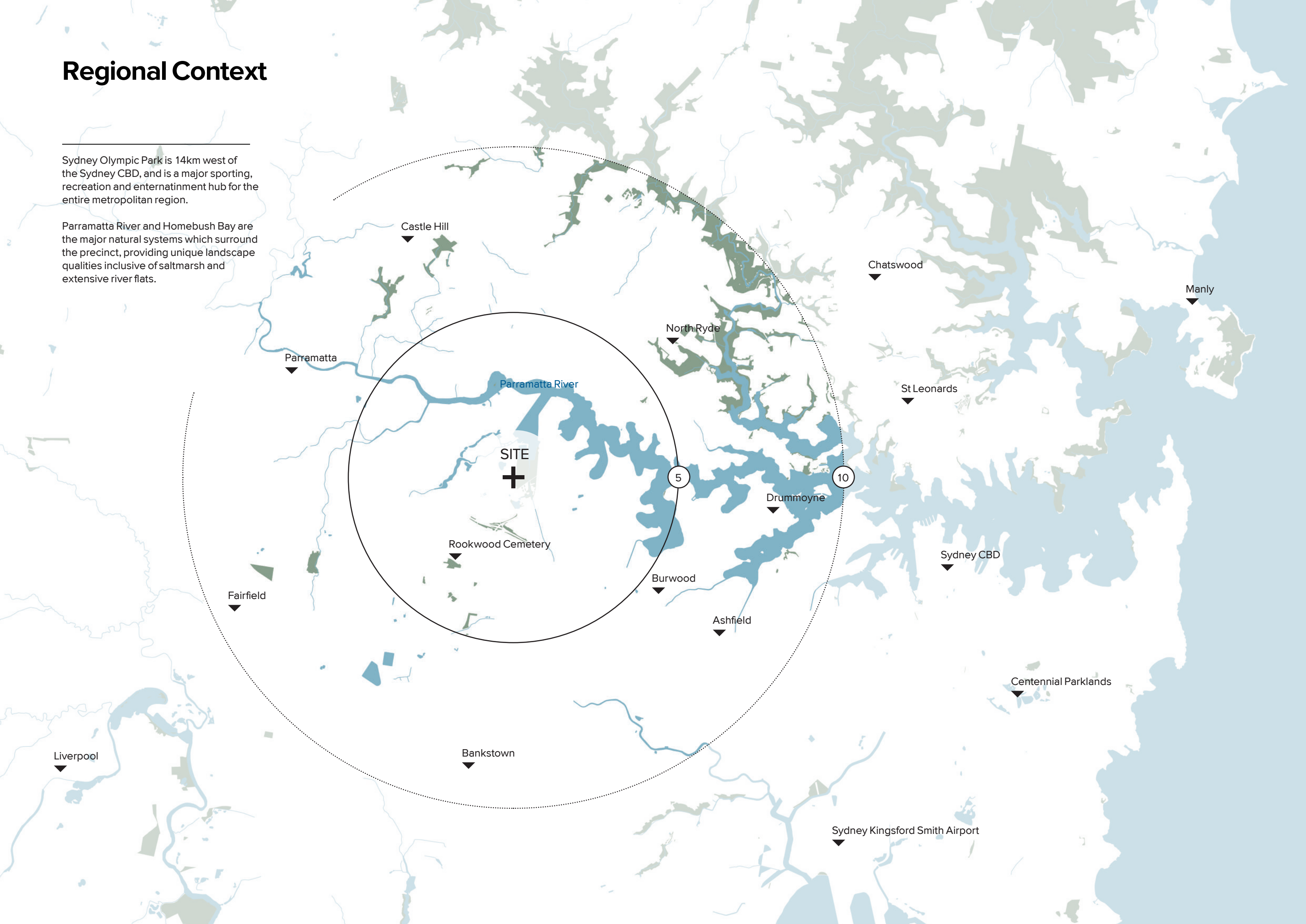
Table of Contents

Section 1 Project Overview	Section 2 Concept Plans	Section 3 Detail Plans	Section 4 Appendix
/ Regional Context	/ Design Strategies	/ Fig Tree Terrace	000 Cover Sheet
/ Local Context	/ Guiding Principles	/ The Grove	100 Landscape Master Plan
/ History	/ Concept	/ Market Green	101 Planting Plan
/ Landscape Vernacular	/ Master Plan	/ The Avenue	102 Planting Plan
	/ Circulation_Pedestrian	/ Materials Palette	103 Planting Plan
	/ Circulation_Vehicular	/ Planting Schedule	104 Planting Plan
			200 Landscape Details
			300 Landscape Specification

Regional Context

Sydney Olympic Park is 14km west of the Sydney CBD, and is a major sporting, recreation and entertainment hub for the entire metropolitan region.

Parramatta River and Homebush Bay are the major natural systems which surround the precinct, providing unique landscape qualities inclusive of saltmarsh and extensive river flats.



Local Context

The precinct is located within the City of Parramatta LGA, which has a population of approximately 230,000 people.

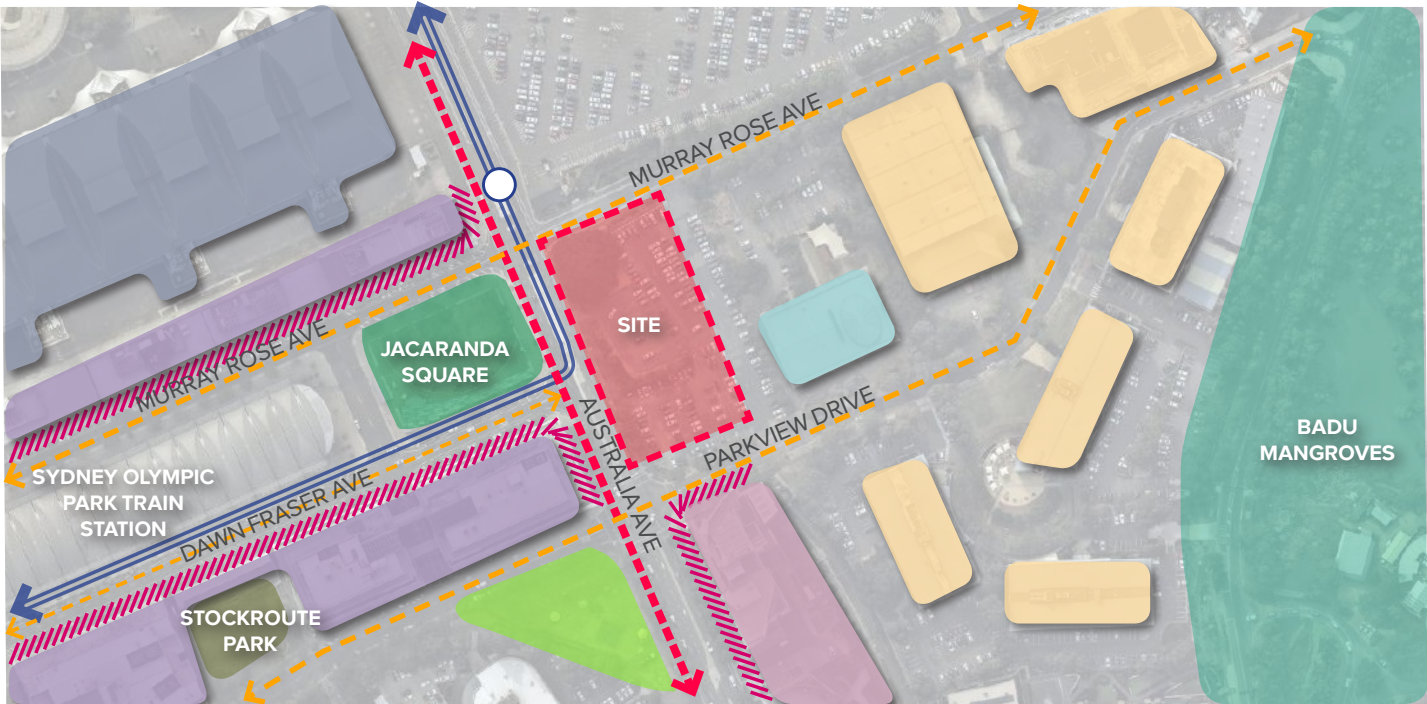
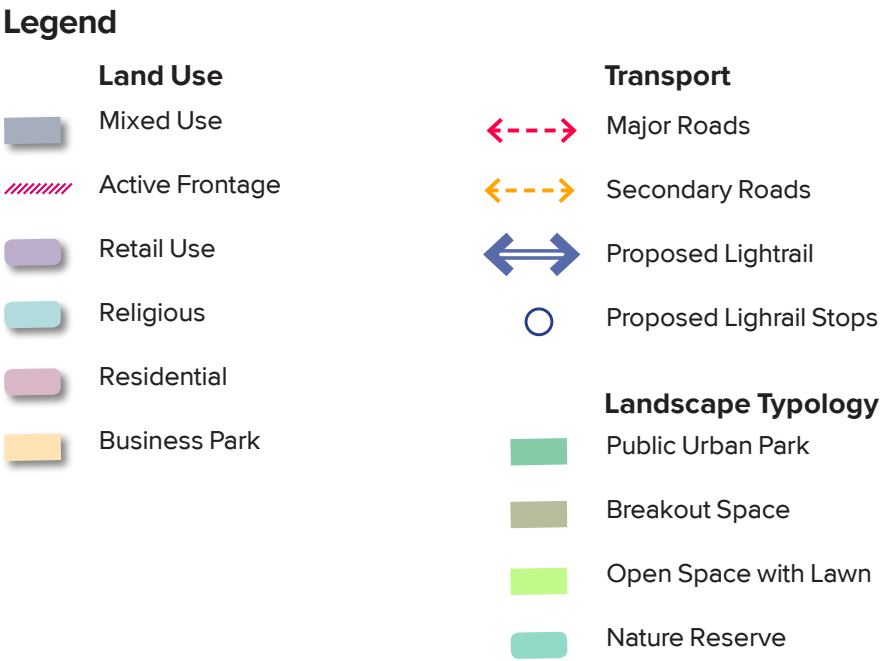
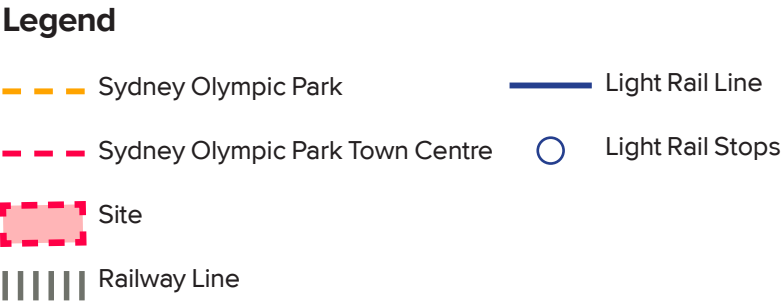
The site is well serviced by an extensive infrastructure network of road and rail, with the M4 Western Motorway forming the primary transport network for the region. Parramatta River and the various inlets and bays are major recreation and amenity hotspots.



Local Context


The Site is located within the Parklands Precinct of the Sydney Olympic Park. The site is well connected with several main roads including Australia Avenue, Parramatta Road and arterial roads that link directly into the Sydney Olympic Park Town Centre.


Transit connections include the main Train line with the station directly opposite the site and with the future Parramatta light rail extension. The parklands behind provide a range of green open spaces and nature reserves with a focus on water ; wetlands, mangroves and creeks.





Local Context


Legend


 Site

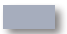
 View Corridors

 Pedestrian Movements

 Existing Trees

 Open Lawn

 Focal Points

 Built Form



Indigenous History

Sydney Olympic Park is situated on the traditional lands of the Wann clan, known as the Wann-gal. The lands of the Wann-gal stretched along the southern shore of the Parramatta River between Cockle Bay (Cadi-gal land) and Rose Hill (Burrumatta-gal land). Across the river were the Wallumetta-gal.

The Wann-gal and their ancestors have lived in the Homebush Bay area for thousands of years. Physical evidence of the usage of the Homebush Bay area by Aboriginal people has been found in the form of stone artefact's located at the site. In addition, several scarred trees have been found within remnant forest.

The estuarine ecosystems provided the Aboriginal communities with food, clothing and other resources necessary to their lifestyle as well as a means of traveling throughout the region by water. Aboriginal people were still using the Homebush Bay area, even after their lands were granted to Europeans.



Industrial History

Early last century, increased building activity caused the price of building materials to rise. In order to control the price of bricks, the Government established the State Brickworks at the head of Homebush Bay in 1911. >>

During the economic depression of the 1930s, the brickworks operated at a significant loss. In 1936, they were sold to private enterprise and closed in 1940.



After World War II, the Government re-established the State Brickworks due to a shortage of bricks. Two large pits were created to provide the clay to make the bricks. The first pit was closed and filled in during the 1960s. >>

Work in the second pit ceased with the closure of the brickworks in 1988.



This pit is now an adopted home of the Green and Golden Bell Frog and a feature of the parklands. >>

Today, this is the location of the award winning Brickpit Ring Walk.



Landscape Vernacular

BRICKPIT PARK

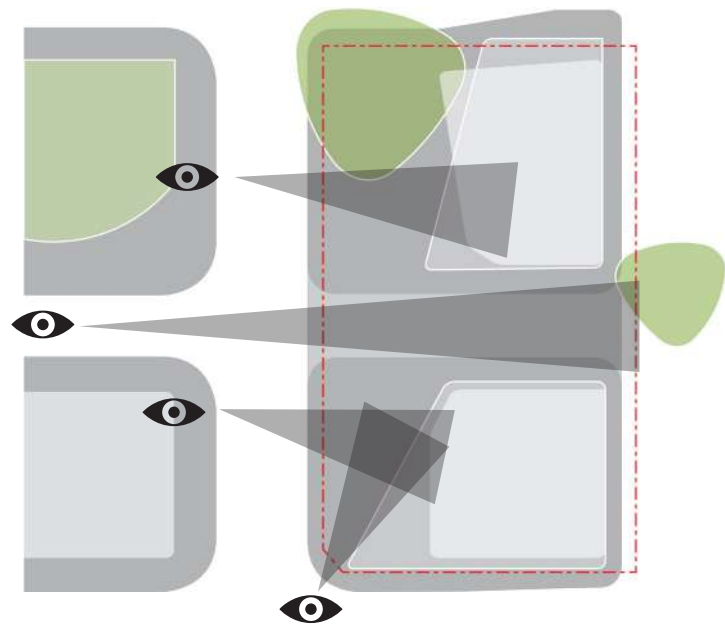


WENTWORTH COMMON

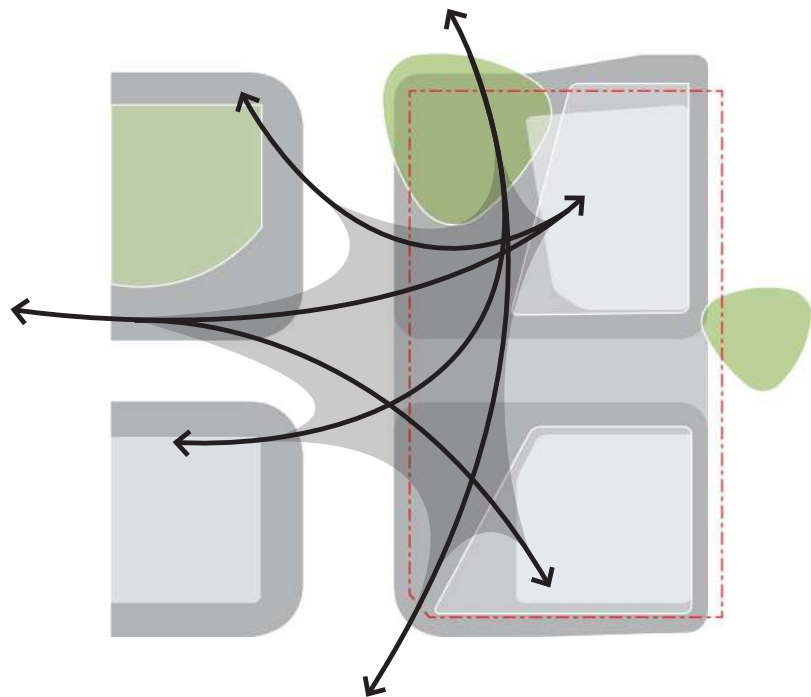
JACARANDA SQUARE



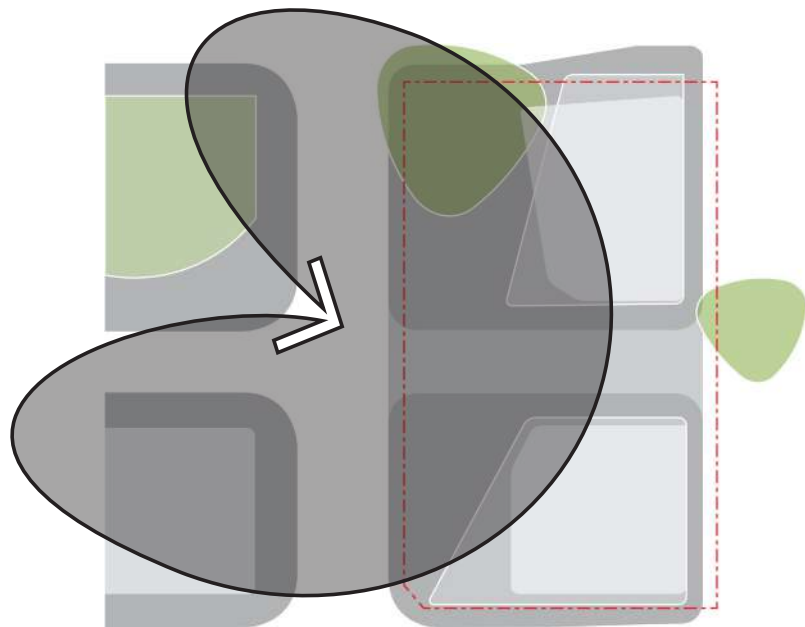
Design Strategies



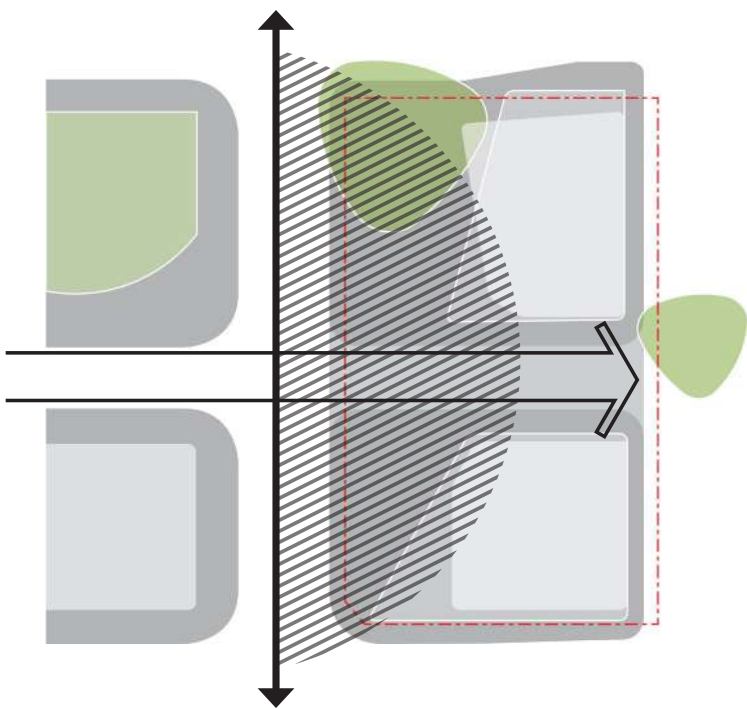
RESPECT KEY VIEWS



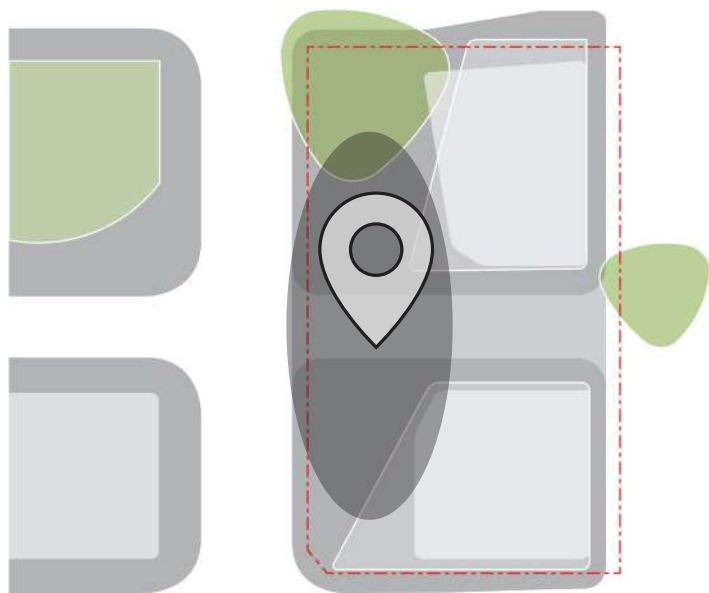
CREATE FLUID CONNECTIONS



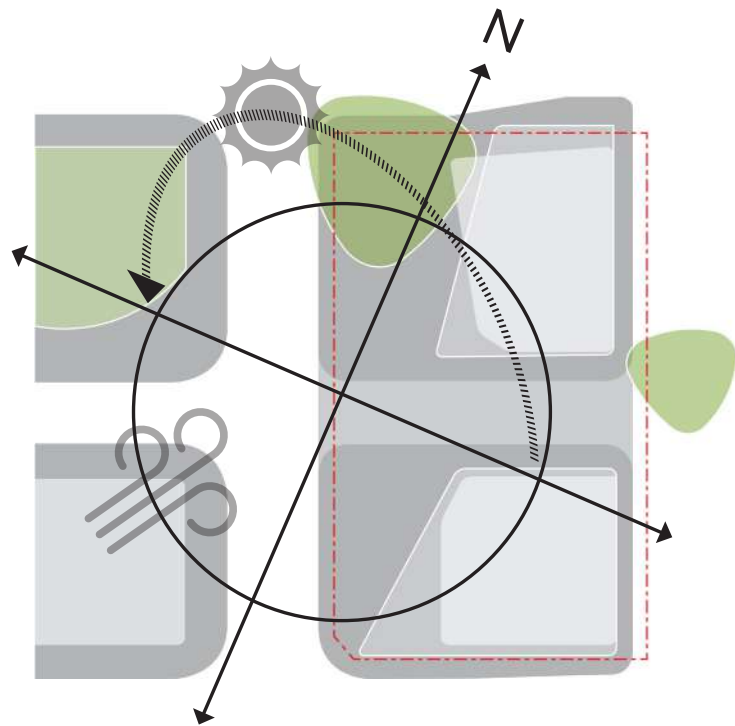
GREEN LINK WITH PARK



URBAN EDGES FOR PEOPLE



COMPLEMENTARY CHARACTER ZONES



ENSURE HUMAN COMFORT

Guiding Principles

PEDESTRIAN
PRIORITY



A BIOPHILIC RESPONSE
LIVING SCULPTURES



AN URBAN DESTINATION OF
SEASONAL COMFORT



FINE-GRAIN POROSITY



Concept

“A LIVING SCULPTURE”

The Majesty of the Fig...
Currently hidden away from public consumption, an opportunity lost.

To connect people to the natural world is implicit in our approach, and this sentinel of the site offers her majesty in this pursuit.

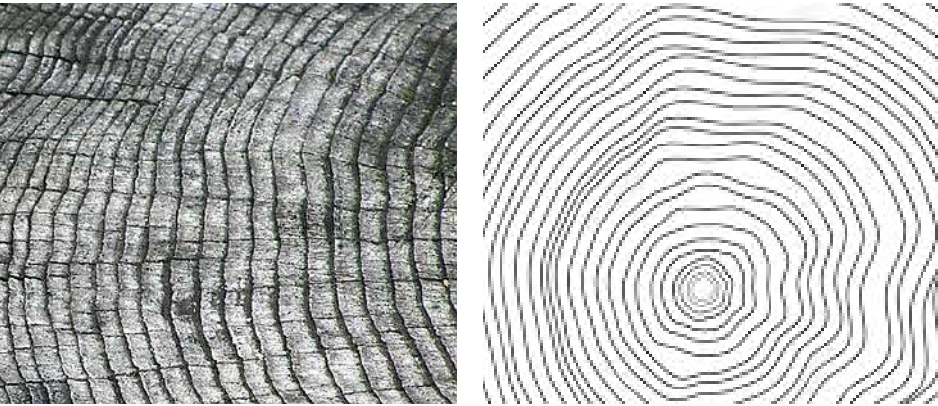
Our aim is to emphasise both the incredible spread of the structural limbs, and expose the beauty of the buttress root system.

Both tell a story of the site and conditions, having adapted over the last 100 years in this place. The forms are opportunistic and inherently functional.

Open to interpretation, the pronounced and interweaving forms have inspired the ground plane and provide biophilic associations.

To walk, sit or look under the canopy of this giant is to be embedded into this site.

The tree - a relic....to be protected, respected....and celebrated. A living sculpture presented and prized.

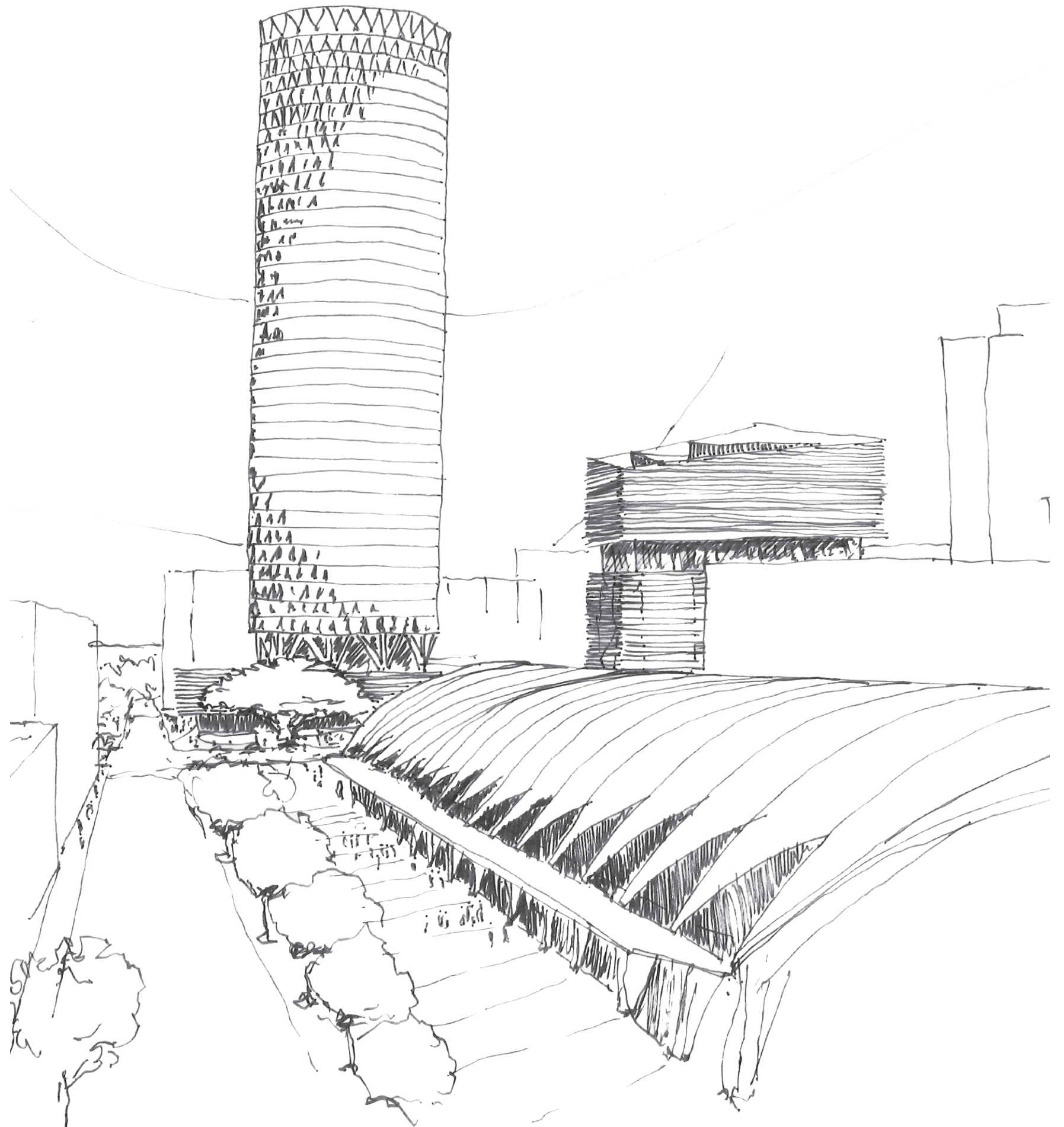


Concept

BUILDING + LANDSCAPE

We see this site as an experience, where building and landscape share a dialogue...embedded to the site and surrounds.
The sinuous edges to bold architectural forms receive an equally strong but kind landscape interface.
Site grades are dissolved through careful manipulation of pedestrian movement.

The eventuating edges provide an opportunity for further shared design inspiration - the horizontality of the building podiums creating a detailed expression of the smooth timber. We see this as important vernacular to interpret into the public realm. A series of articulated timber island have been defined to complement the buildings and answer the external needs of it's occupants.



Concept

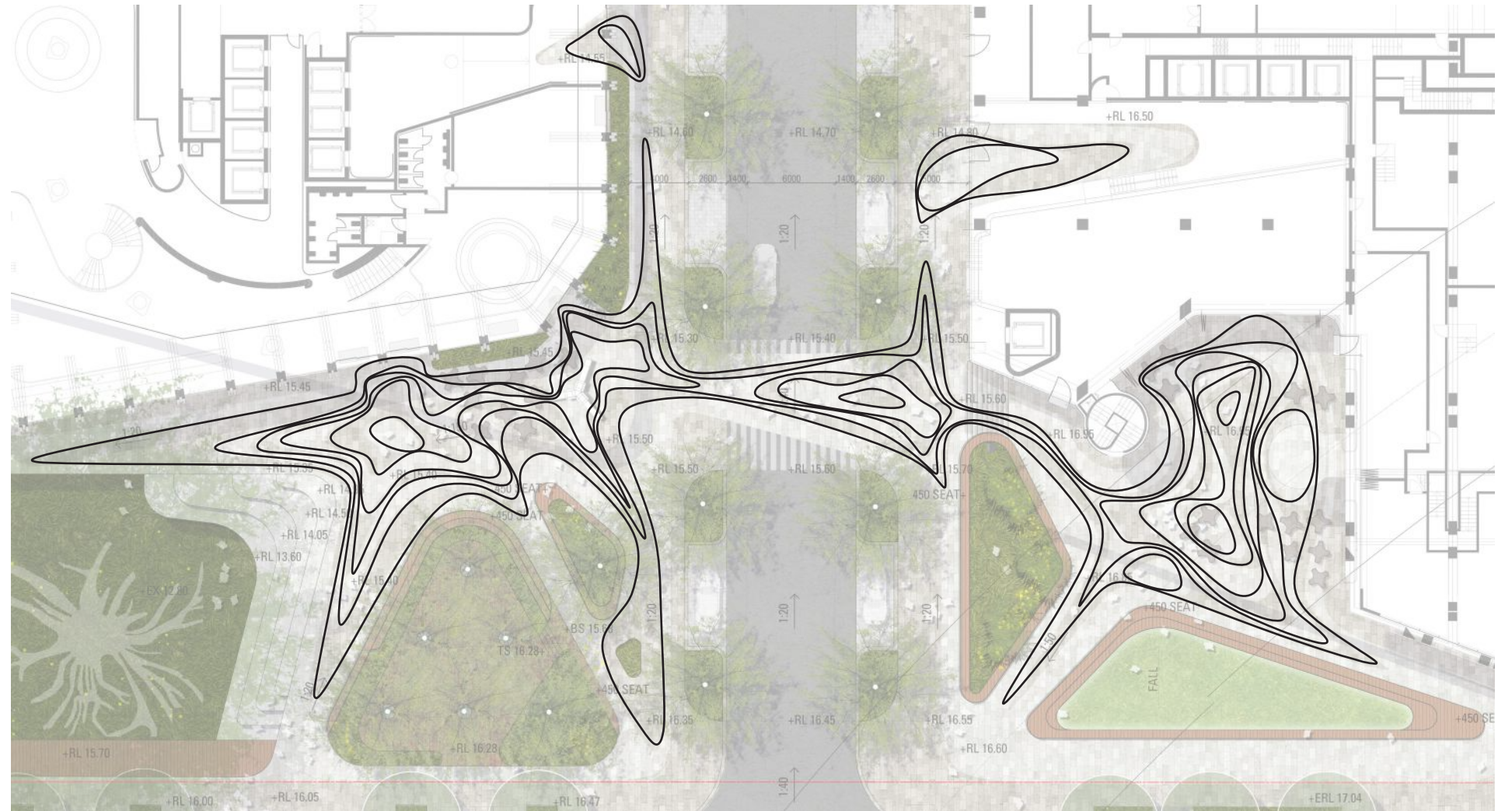
THE LIFELINE

The lifeline concept embodies a reverence for history and respect for past cultures. An element that incorporates the area's rich heritage to create a contemporary storyline that engages the senses.

The potential layers of light, art and literature can expand the understanding of place and people to visitors of this site. The scale of detail holding value for even the most regular of users.

The authenticity of this element is fundamental. Engagement with those who can help tell this story is assumed and desired.

Life moves forward also, and this element seeks to excite and engage into the future with playful moments and hidden surprises.



Master Plan

PORT COCHERE

THE BAR

DAWN FRASER EAST AVE

MARKET HALL

Site 2A

Site 2B

FIG TREE TERRACE

MURRAY ROSE AVE

PARKVIEW DR

THE GROVE

SUN LOUNGE

THE GREEN

AUSTRALIA AVE

ARCADIA

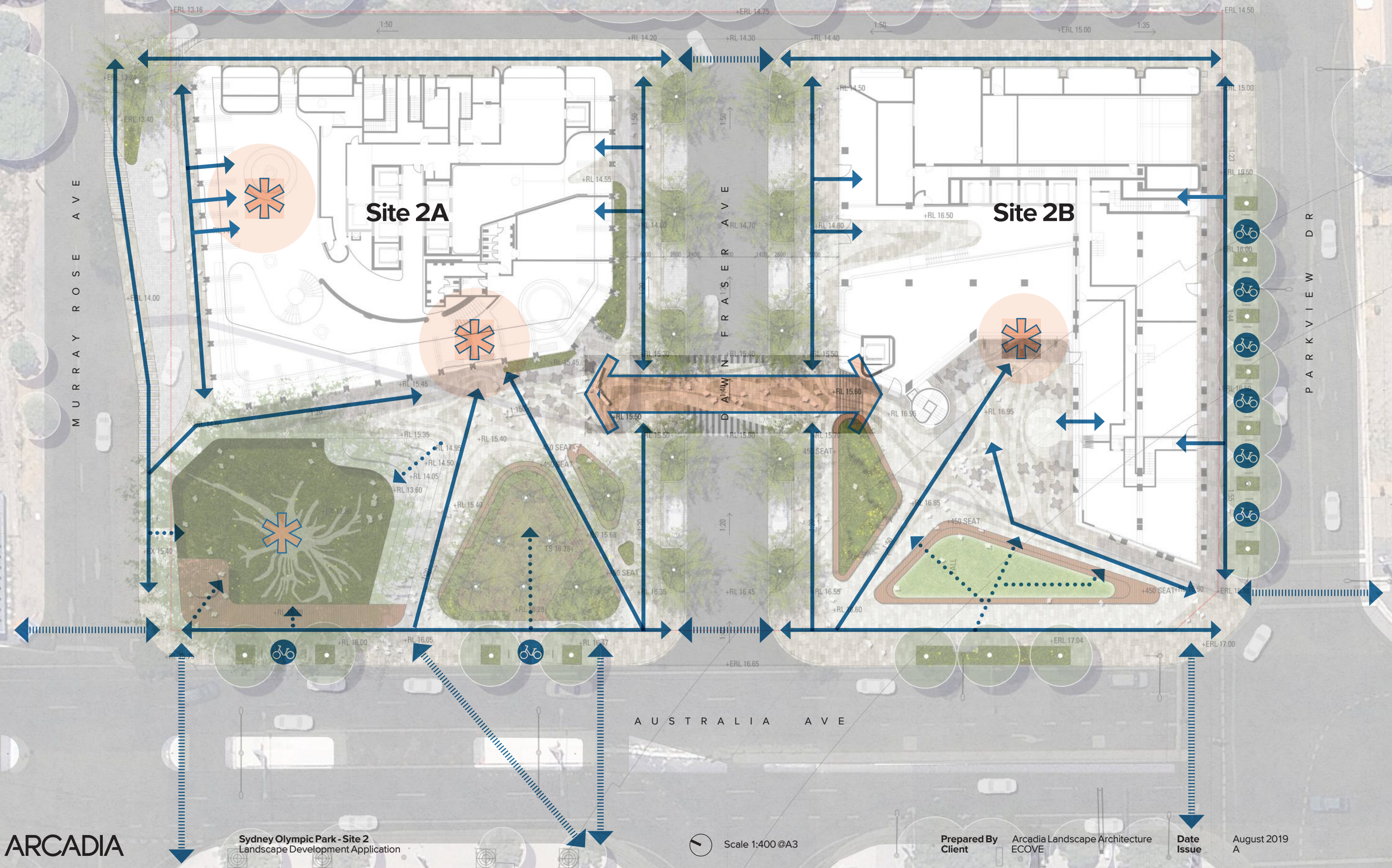
Sydney Olympic Park - Site 2
Landscape Development Application

Scale 1:400 @A3

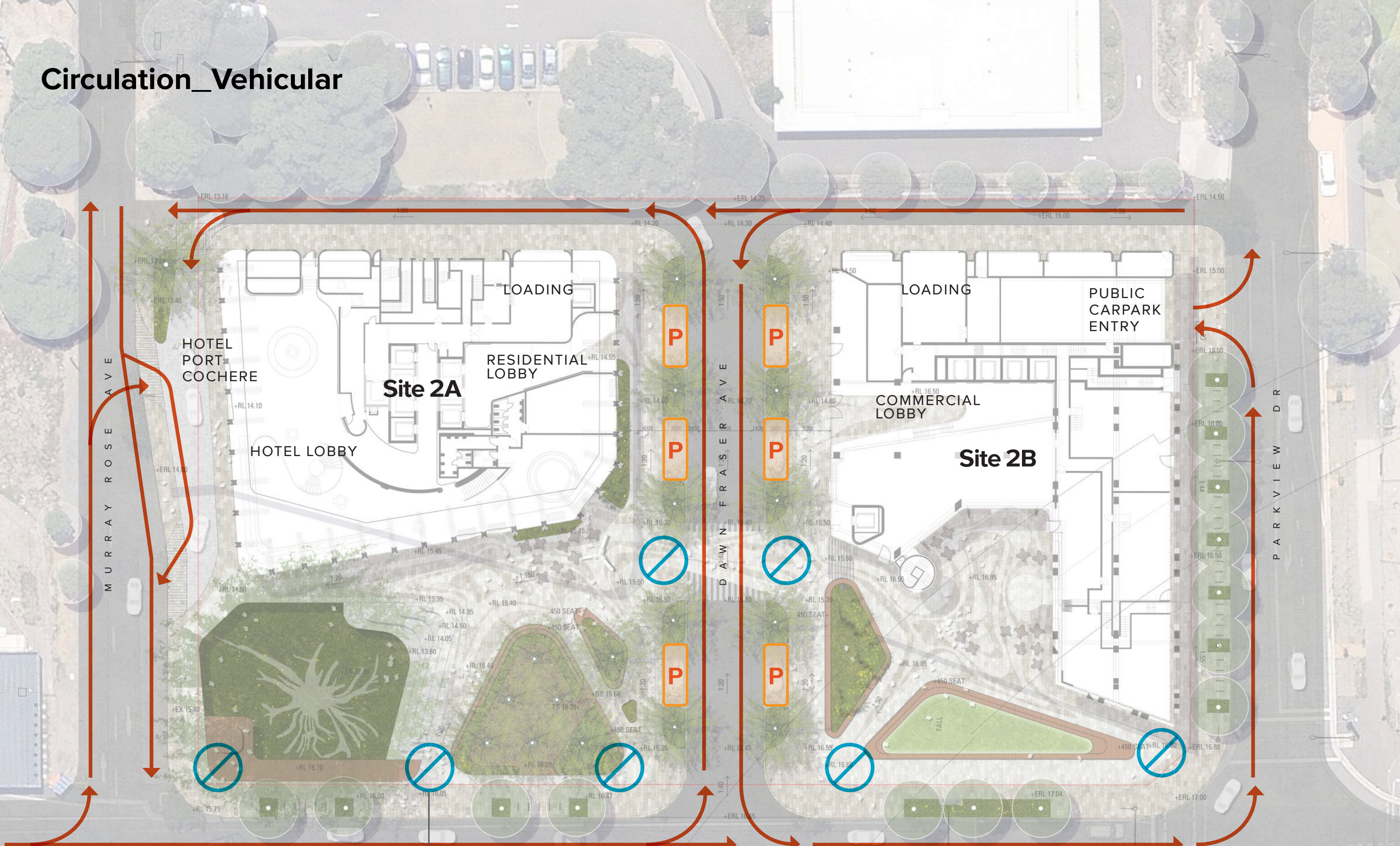
Prepared By
Client
Arcadia Landscape Architecture
ECOVE

Date
Issue
August 2019
A

Circulation_Pedestrian



Circulation_Vehicular



*INTEGRATED ANTI-HOSTILE
VEHICLE MEASURES

Fig Tree Terrace

Site 2A

Legend

- | | | | |
|---|-------------------------|---|-----------------|
| 1 | Ficus macrophylla | 5 | Hotel forecourt |
| 2 | Fig deck and seatlounge | 6 | Timber grove |
| 3 | Feature shade garden | 7 | Port cochere |
| 4 | Buttress terrace | | |



The Fig
Site 2A - Section A



The Grove

Site 2A

- Legend**
 - 1 Restaurant entry
 - 2 Bar alfresco
 - 3 Hotel forecourt
 - 4 Buttress terrace
 - 5 Raised deck grove
 - 6 Hotel lounge
 - 7 Timber island
 - 8 Pedestrian crossing



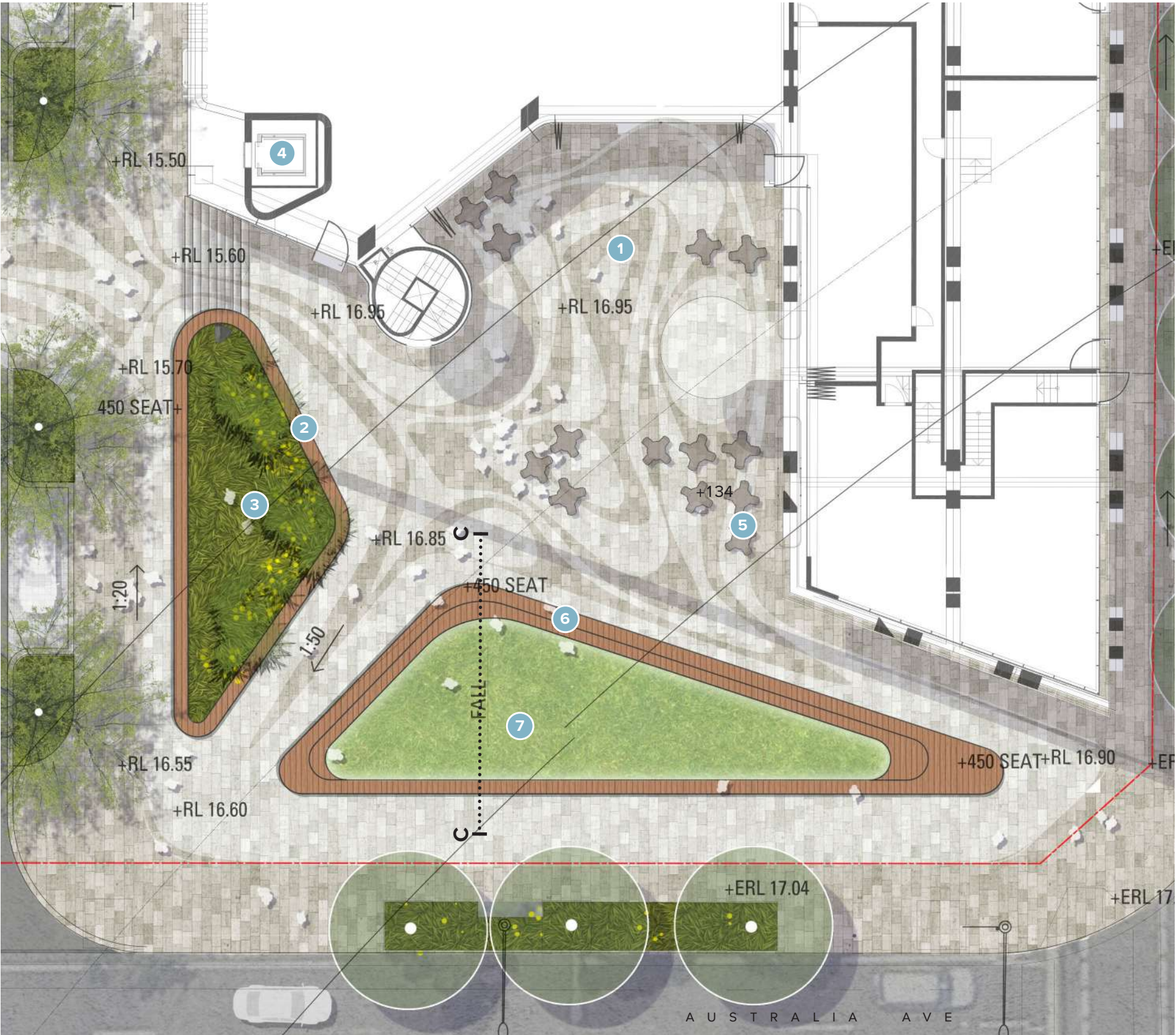
The Grove
Site 2A - Section B



Market Green

Site 2B

- Legend**
 - 1 Market atrium
 - 2 Island sun-lounge
 - 3 Native feature garden
 - 4 Carpark lift
 - 5 Cafe alfresco
 - 6 Communal deck lounge
 - 7 Communal green



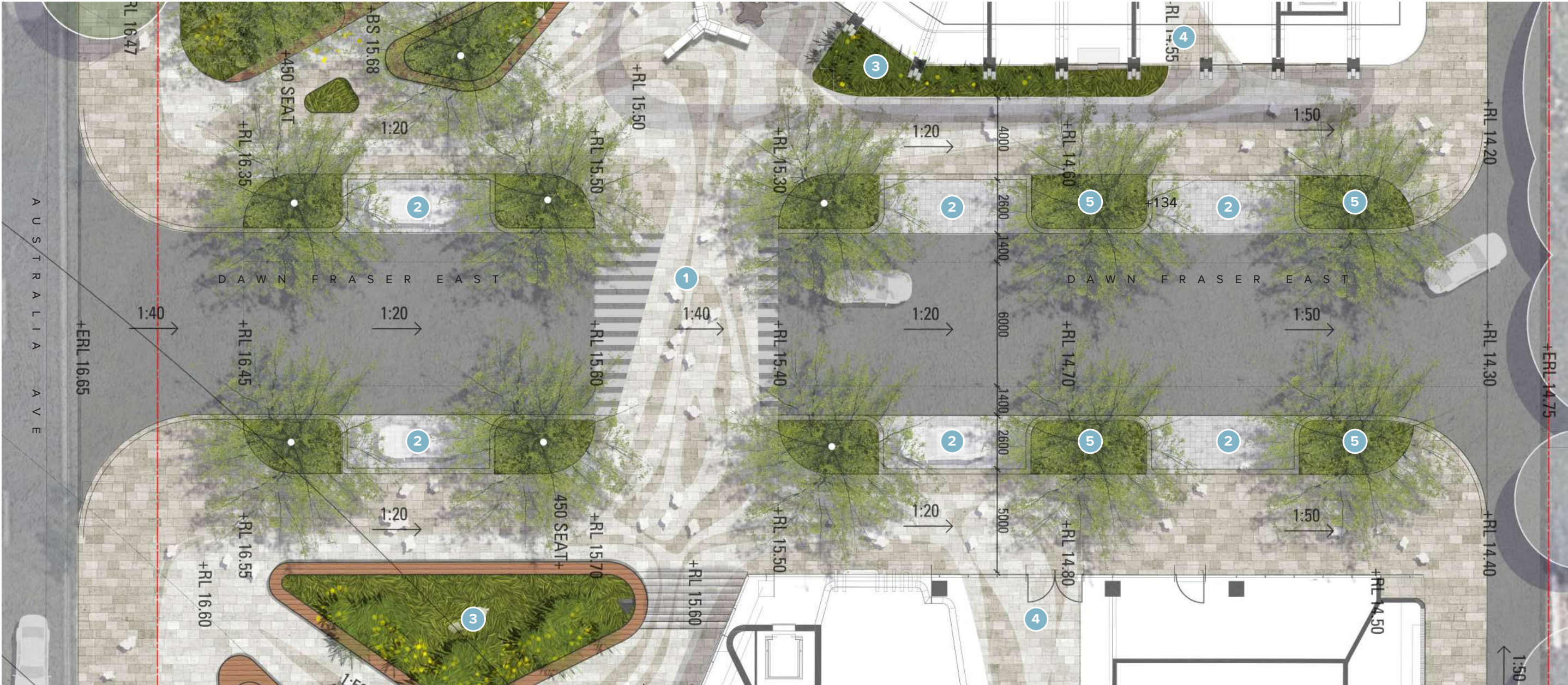
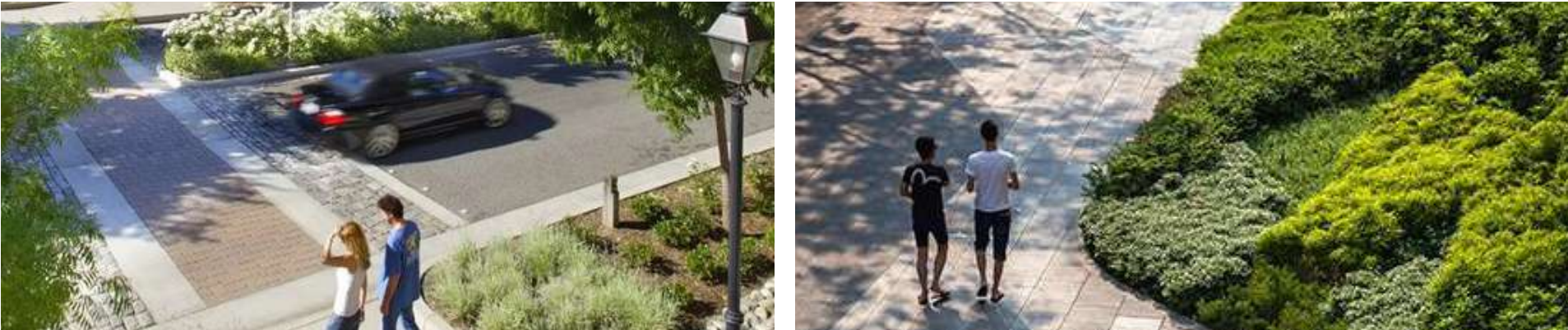
Market Green
Site 2B - Section C



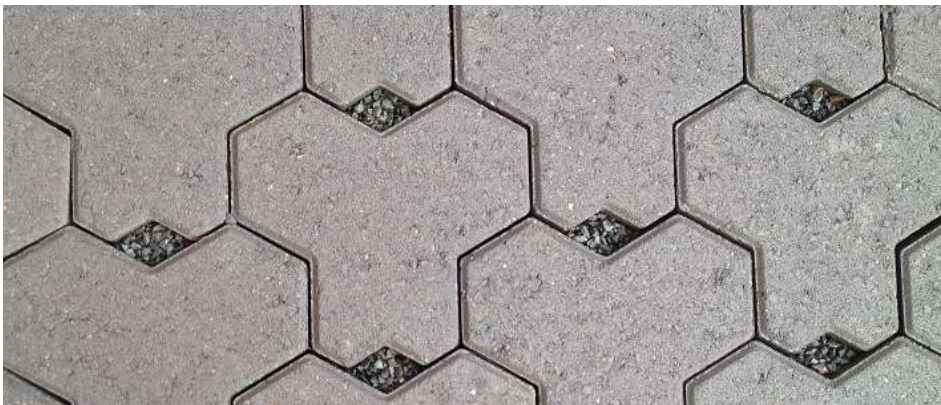
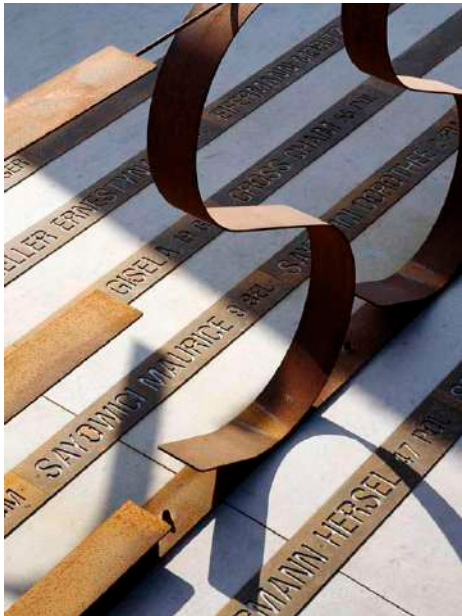
Dawn Fraser Ave

Site 2A & 2B

- Legend
- 1 Pedestrian crossing (at-grade)
 - 2 On-street car parking
 - 3 Feature native garden
 - 4 Entry lobby
 - 5 Rain gardens



Material Palette



Planting Palette

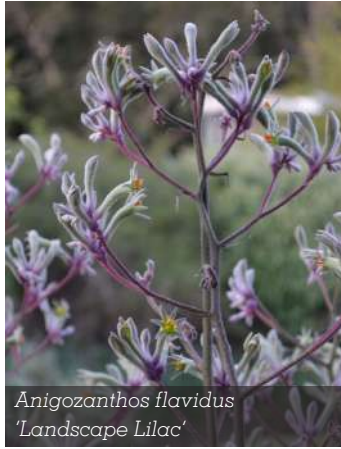
TREES



SHADE MATRIX



SHRUBS + GROUNDCOVERS



WSUD PLANTING





Appendix

SYDNEY OLYMPIC PARK SITES 2A + 2B

AUSTRALIA AVENUE, SYDNEY OLYMPIC PARK, NSW

DRAWING SCHEDULE

DRAWING NO.	DRAWING TITLE
000	COVER SHEET
101	LANDSCAPE MASTERPLAN
101	PLANTING PLAN
102	PLANTING PLAN
103	PLANTING PLAN
104	PLANTING PLAN
200	LANDSCAPE DETAILS
300	LANDSCAPE SPECIFICATION

PLANTING SCHEDULE

15-557 SOPA ECOVE PLANT SCHEDULE				
CODE	BOTANIC NAME	COMMON NAME	MATURE SIZE (h x w) (m)	PROPOSED POT SIZE
TREES & PALMS				
Zs	<i>Zelkova serrata</i>	Japanese Zelkova	12 x 10	100lt
TI	<i>Tristaniopsis laurina</i> 'Luscious'	Luscious Water Gum	10 x 5	75L
Cm	<i>Corymbia maculata</i>	Spotted Gum	20 x 10	75L
MATRIX 01 - UNDERSTORY				
Vh	<i>Viola hederacea</i>	Native Violet	0.2 x 0.5	150mm
Px	<i>Philodendron</i> 'Xanadu'	Xanadu	1 x 1	150mm
Aa	<i>Asplenium australasicum</i>	Birds Nest Fern	1.5 x 1.5	200mm
Dc	<i>Dianella revoluta</i>	Spreading Flax Lily	1 x 1.5	150mm
Wg	<i>Wahlenbergia gracilis</i>	Native Bluebell	0.4 x 0.4	150mm
Xt	<i>Xanthorrhoea australis</i>	Grass Tree	2 x 1	200mm
Bs	<i>Billardiera scandens</i>	Apple Berry	1.5 x 3	200mm
Am	<i>Arthropodium milleflorum</i>	Pale Vanilla Lily	1.3 x 0.3	150mm
MATRIX 02 - SHADE				
Do	<i>Doodia aspera</i>	Prickly Rasp Fern	0.5 x 0.5	150mm
Vh	<i>Viola hederacea</i>	Native Violet	0.2 x 0.5	150mm
Bs	<i>Blechnum gibbum</i>	Silver Lady Fern	1.5 x 1.5	200mm
La	<i>Lobelia anceps</i>	Angled lobelia	0.3 x Spreading	150mm
Cd	<i>Calochlaena dubia</i>	False Bracken Fern	1.2 x 1.2	150mm
Cc	<i>Cyathea cooperi</i>	Tree Fern	5 x 2	300mm
Br	<i>Bromeliad Species</i>	Bromeliad	1 x 1	150mm
Ac	<i>Alpinia caerulea</i>	Native Ginger	2 x 2	200mm
MATRIX 03 - STREETSCAPE				
Pl	<i>Philydrum lanuginosum</i>	Wooly Frogs Mouth	0.7 x 0.6	150mm
Bj	<i>Baumea juncea</i>	Bare Twigrush	1 x 1	150mm
Jk	<i>Juncus kraussii</i>	Sea Rush	1 x 1	150mm
MATRIX 04 - GROUNDCOVER				
Ggc	<i>Goodenia ovata</i> 'Gold Cover'	Gold Cover	0.15 x 1	150mm
Pl	<i>Poa labillardieri</i> 'Eskdale'	Tussock Grass	0.5 x 0.5	150mm
Dc	<i>Dianella revoluta</i>	Spreading Flax Lily	1 x 1.5	150mm
Am	<i>Arthropodium milleflorum</i>	Pale Vanilla Lily	1.3 x 0.3	150mm
Ag	<i>Anigozanthos Species</i>	Kangaroo Paws	1.5 x 1.5	150mm

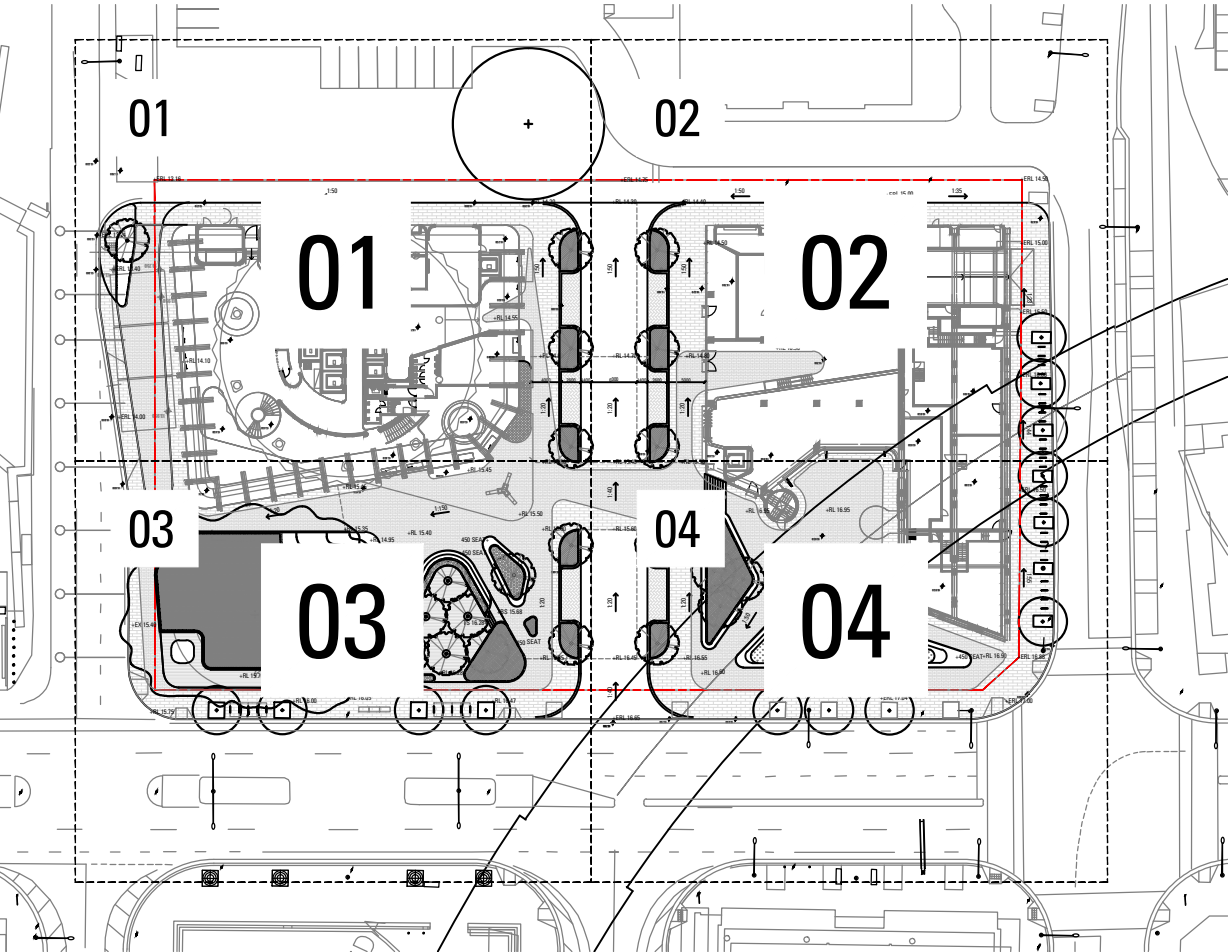
LOCATION PLAN

SCALE: NTS



KEY PLAN

SCALE: 1000 @A1



DRAFT

NOT FOR CONSTRUCTION

Issue	Revision Description	Drawn	Check	Date
A	FOR INFORMATION	CD	MB	15.08.2019

SYDNEY OLYMPIC PARK SITES 2A + 2B

DEVELOPMENT APPLICATION

ECOVE

DRAWING NAME

COVER SHEET

JOB# SHEET# ISSUE
18-557 000 A

NORTH



SCALE AS SHOWN

ARCADIA
LANDSCAPE ARCHITECTURE

DRAFT
NOT FOR CONSTRUCTION

Issue	Revision Description	Drawn	Check	Date
A	FOR INFORMATION	CD	MB	15.08.2015
1	1	1	1	15.08.2015
2	2	2	2	15.08.2015
3	3	3	3	15.08.2015
4	4	4	4	15.08.2015
5	5	5	5	15.08.2015
6	6	6	6	15.08.2015
7	7	7	7	15.08.2015
8	8	8	8	15.08.2015
9	9	9	9	15.08.2015
10	10	10	10	15.08.2015

SYDNEY OLYMPIC PARK SITES 2A + 2B


DEVELOPMENT APPLICATION

ECOVE

DRAWING NAME

LANDSCAPE MASTERPLAN

JOB# SHEET# ISSUE NORTH

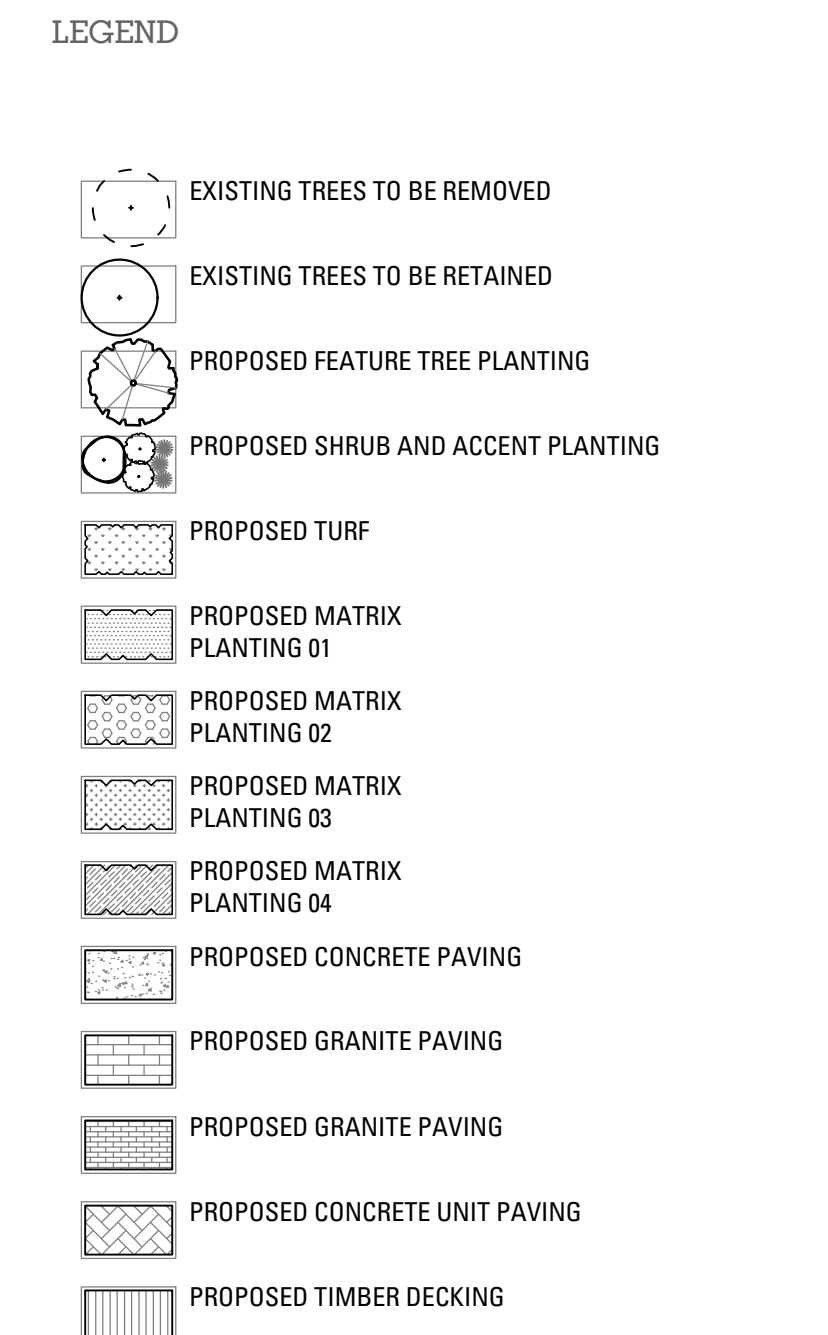
18-557 100 A 

SCALE 1:250 @ A1

[illegible]

ARCADIA
LANDSCAPE ARCHITECTURE

Lower Deck Jones Bay Wharf Suite 76 / 26-32 Pirrama Rd
Pyrmont 2009 NSW p 61 2 8571 2900



DRAFT
NOT FOR CONSTRUCTION

[illegible]

SYDNEY OLYMPIC PARK SITES 2A + 2B

DEVELOPMENT APPLICATION

ECOVE

DRAWING NAME

PLANTING PLAN

JOB# SHEET# ISSUE NORTH

18-557 101 A 

SCALE 1:100 @ A1

A horizontal scale bar with alternating black and white segments. Below the bar are numerical markings at 0, 1, 2, 3, 4, and 5, followed by the unit 'm'.

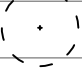
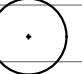

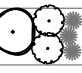

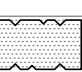
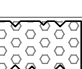



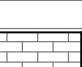



ARCADIA
LANDSCAPE ARCHITECTURE

Lower Deck Jones Bay Wharf Suite 76 / 26-32 Pirrama Rd
Pyrmont 2009 NSW p 61 2 8571 2900

REFER SHEET 101

REFER SHEET 104

LEGEND

- | | |
|---|------------------------------------|
|  | EXISTING TREES TO BE REMOVED |
|  | EXISTING TREES TO BE RETAINED |
|  | PROPOSED FEATURE TREE PLANTING |
|  | PROPOSED SHRUB AND ACCENT PLANTING |
|  | PROPOSED TURF |
|  | PROPOSED MATRIX PLANTING 01 |
|  | PROPOSED MATRIX PLANTING 02 |
|  | PROPOSED MATRIX PLANTING 03 |
|  | PROPOSED MATRIX PLANTING 04 |
|  | PROPOSED CONCRETE PAVING |
|  | PROPOSED GRANITE PAVING |
|  | PROPOSED GRANITE PAVING |
|  | PROPOSED CONCRETE UNIT PAVING |
|  | PROPOSED TIMBER DECKING |

DRAFT
NOT FOR CONSTRUCTION

[illegible]

SYDNEY OLYMPIC PARK SITES 2A + 2B

DEVELOPMENT APPLICATION

RECOVER

DRAWING NAME

PLANTING PLAN

JOB#	SHEET#	ISSUE
18-557	102	A

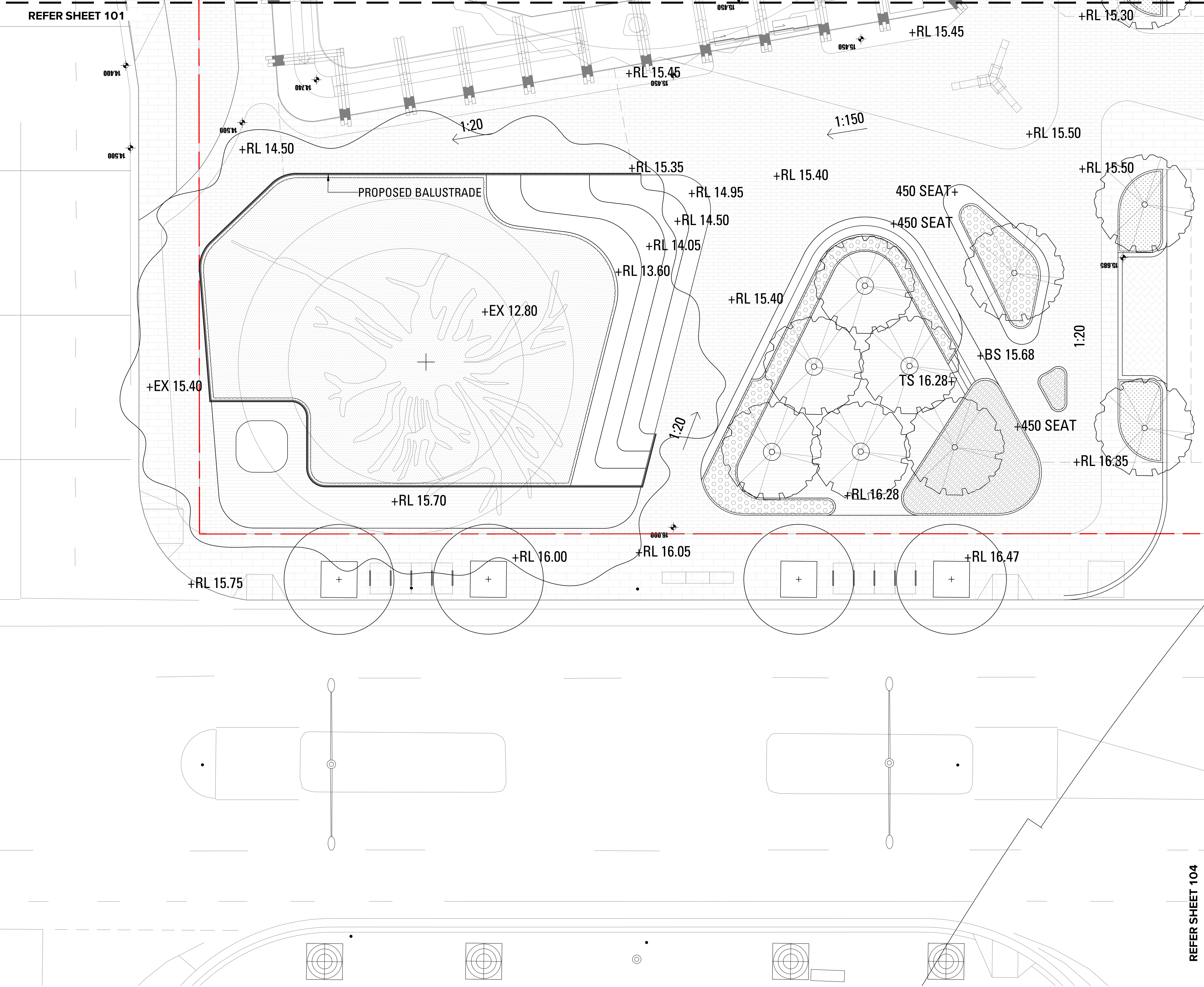
NORTH



SCALE 1:100 @ A1

ARCADIA
LANDSCAPE ARCHITECTURE

Lower Deck Jones Bay Wharf Suite 76 / 26-32 Pirrama Rd
Pyrmont 2009 NSW p 61 2 8571 2900



- LEGEND
- EXISTING TREES TO BE REMOVED
 - EXISTING TREES TO BE RETAINED
 - PROPOSED FEATURE TREE PLANTING
 - PROPOSED SHRUB AND ACCENT PLANTING
 - PROPOSED TURF
 - PROPOSED MATRIX PLANTING 01
 - PROPOSED MATRIX PLANTING 02
 - PROPOSED MATRIX PLANTING 03
 - PROPOSED MATRIX PLANTING 04
 - PROPOSED CONCRETE PAVING
 - PROPOSED GRANITE PAVING
 - PROPOSED GRANITE PAVING
 - PROPOSED CONCRETE UNIT PAVING
 - PROPOSED TIMBER DECKING

DRAFT
NOT FOR CONSTRUCTION

Issue	Revision Description	Drawn	Check	Date
A	FOR INFORMATION	CD	MB	15.08.2019

SYDNEY OLYMPIC
PARK SITES 2A + 2B

DEVELOPMENT APPLICATION

ECOVE

DRAWING NAME
PLANTING PLAN

JOB# SHEET# ISSUE NORTH
18-557 103 A

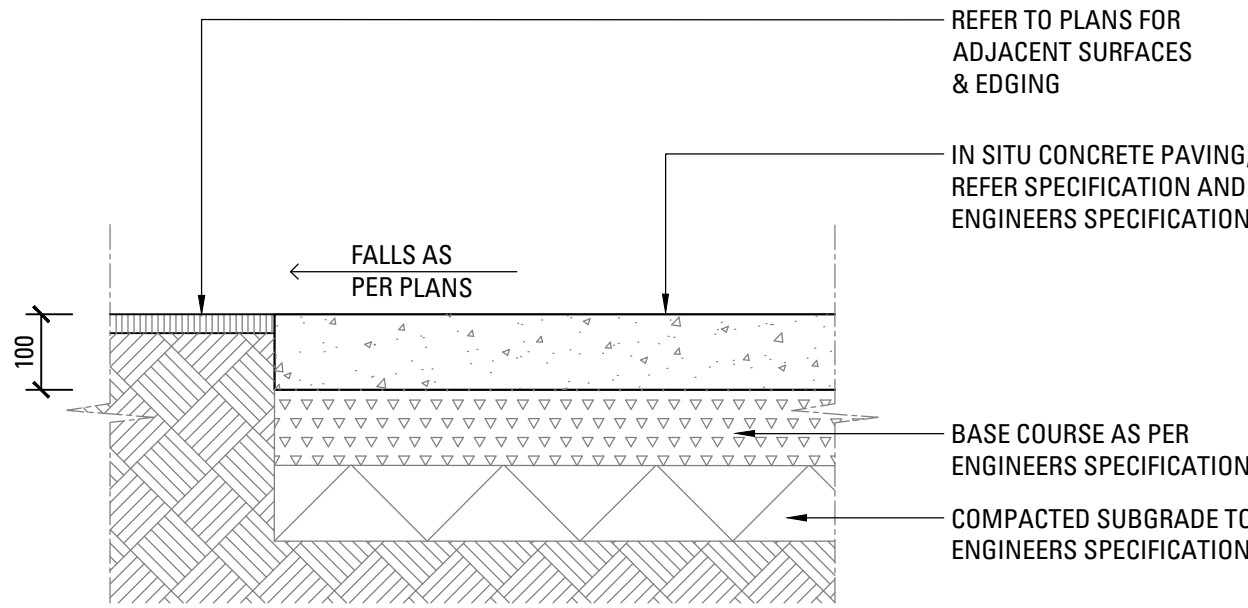
SCALE 1:100 @ A1 0 1 2 3 4 5m



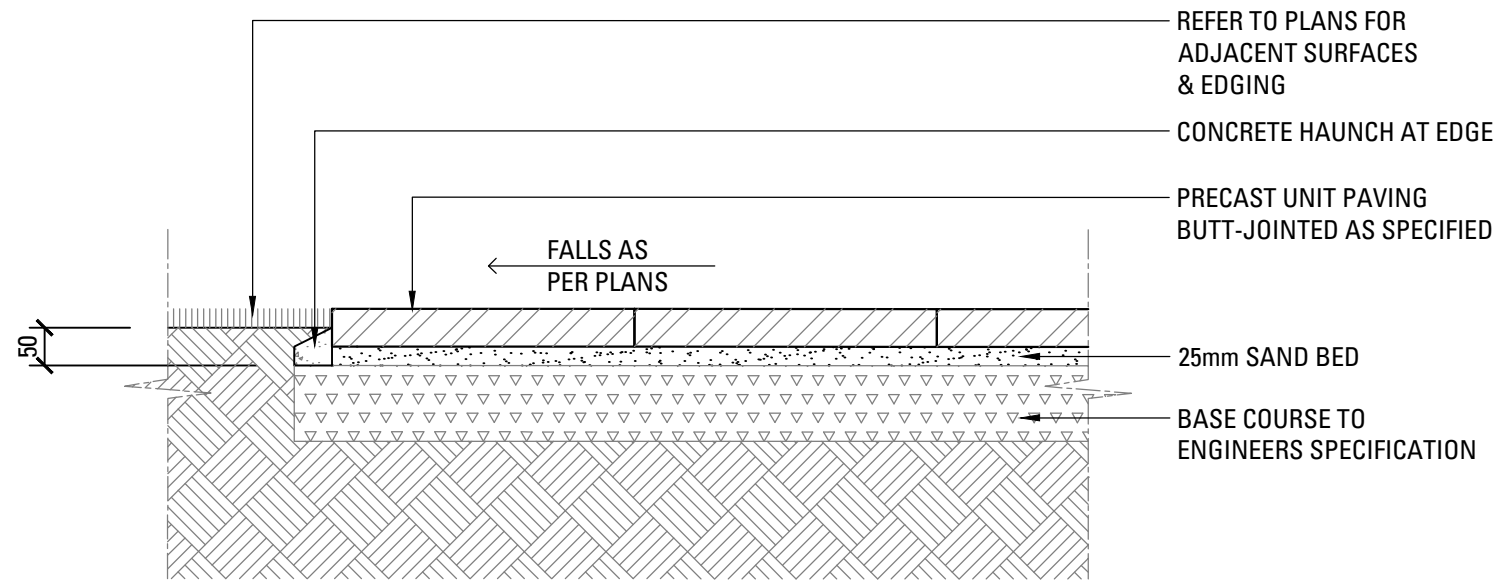
Lower Deck Jones Bay Wharf Suite 76 / 26-32 Pirrama Rd
Pyrmont 2009 NSW p 61 2 8571 2900

REFER SHEET 101

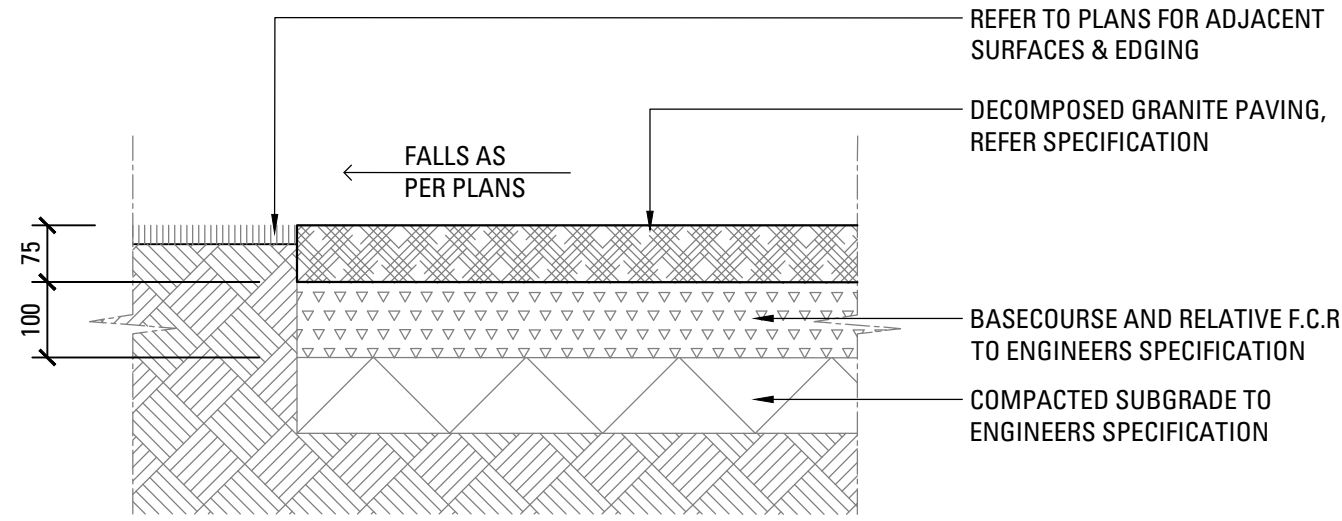
REFER SHEET 104



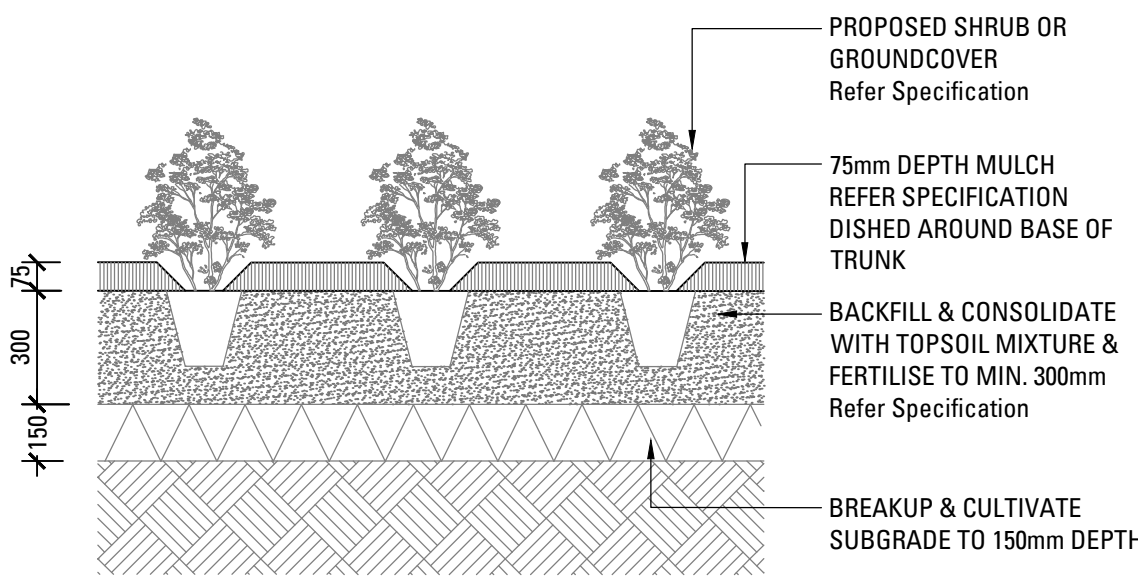
01
200 INSITU CONCRETE PAVING
SCALE 1:10



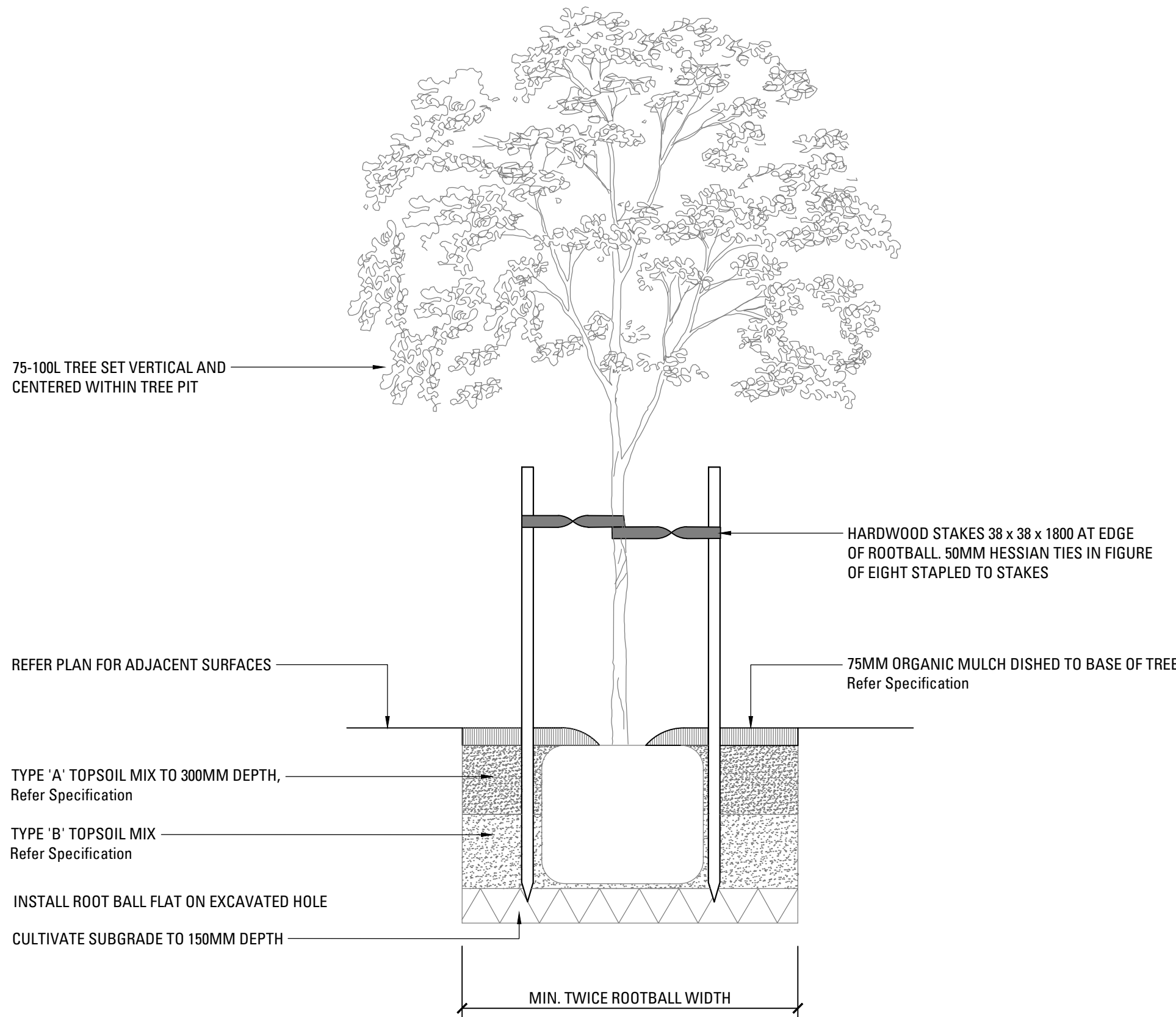
02
200 PRECAST UNIT PAVERS ON GRADE
SCALE 1:10



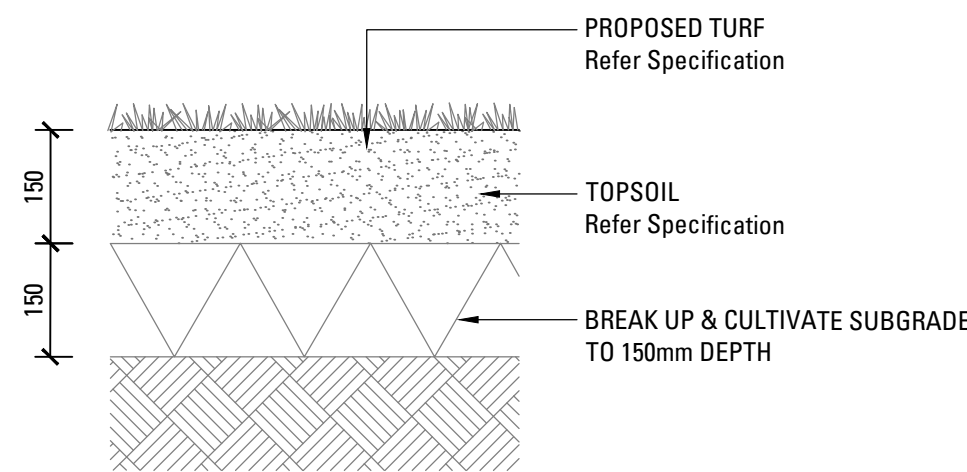
03
200 DECOMPOSED GRANITE PAVING ON GRADE
SCALE 1:10



04
200 SHRUB OR GROUND COVER IN PLANTING BED
SCALE 1:20



05
200 TREE PLANTING 75-100L
SCALE 1:20



06
200 TURF ON GRADE
SCALE 1:10

DRAFT
NOT FOR CONSTRUCTION

Issue	Revision Description	Drawn	Check	Date
A	FOR INFORMATION	CD	MB	15.08.2019

SYDNEY OLYMPIC
PARK SITES 2A + 2B

DEVELOPMENT APPLICATION

ECOVE

DRAWING NAME

LANDSCAPE DETAILS

JOB# SHEET# ISSUE NORTH
18-557 200 A

SCALE AS SHOWN

ARCADIA
LANDSCAPE ARCHITECTURE

