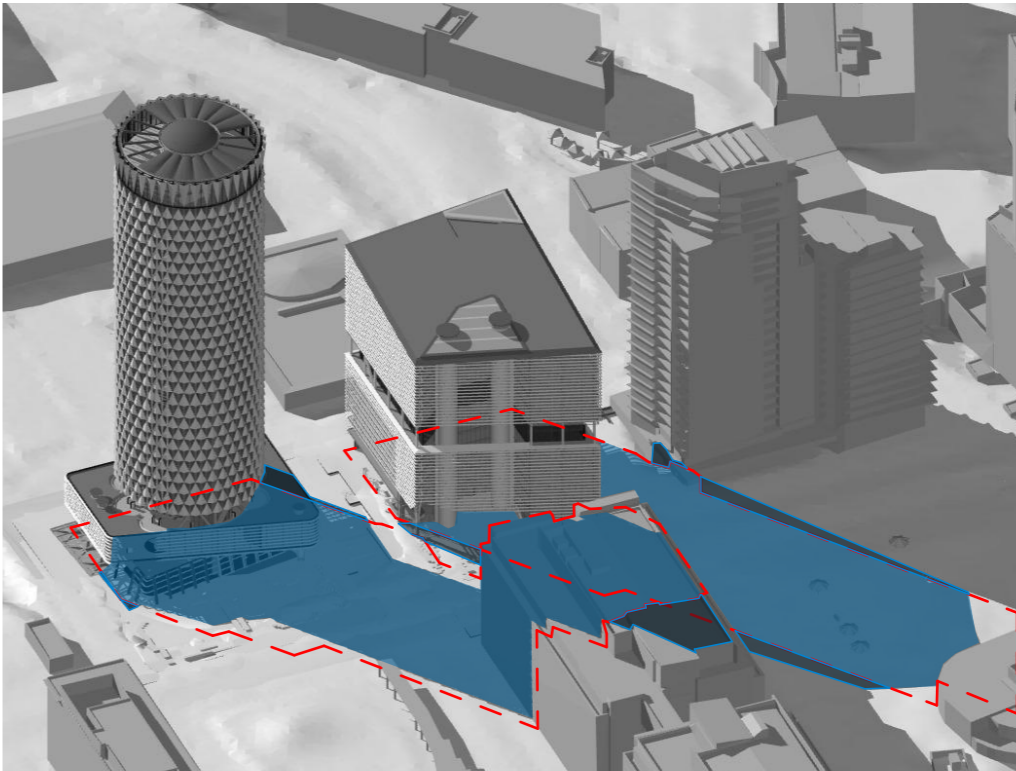
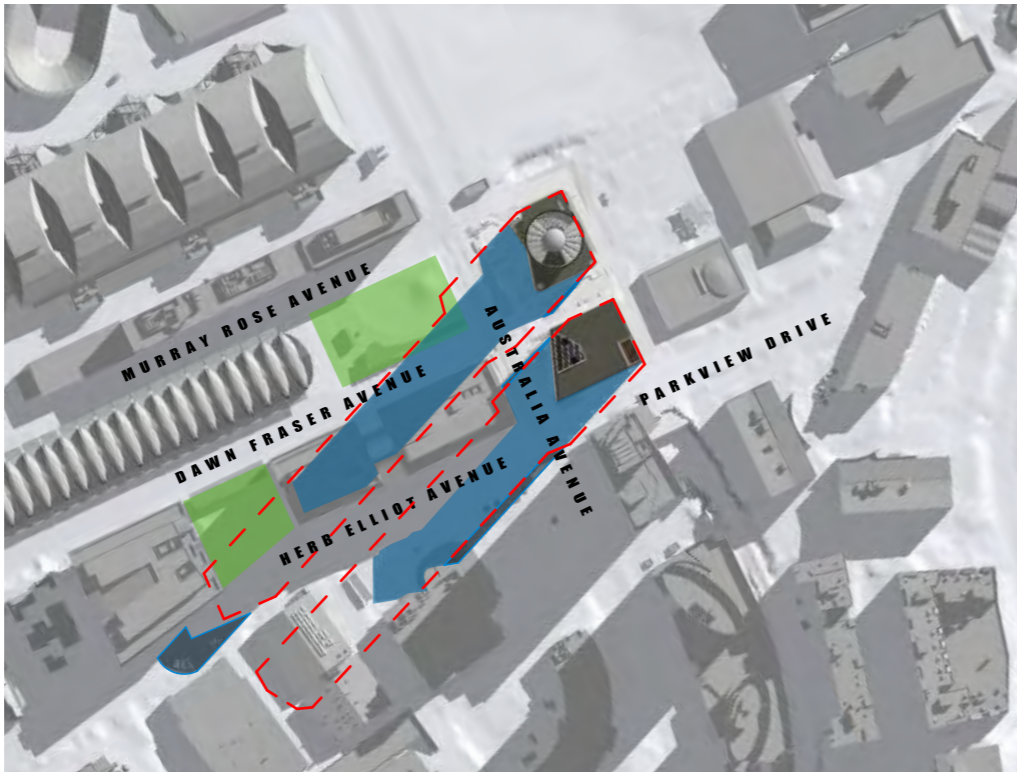


21 JUNE 9:00am

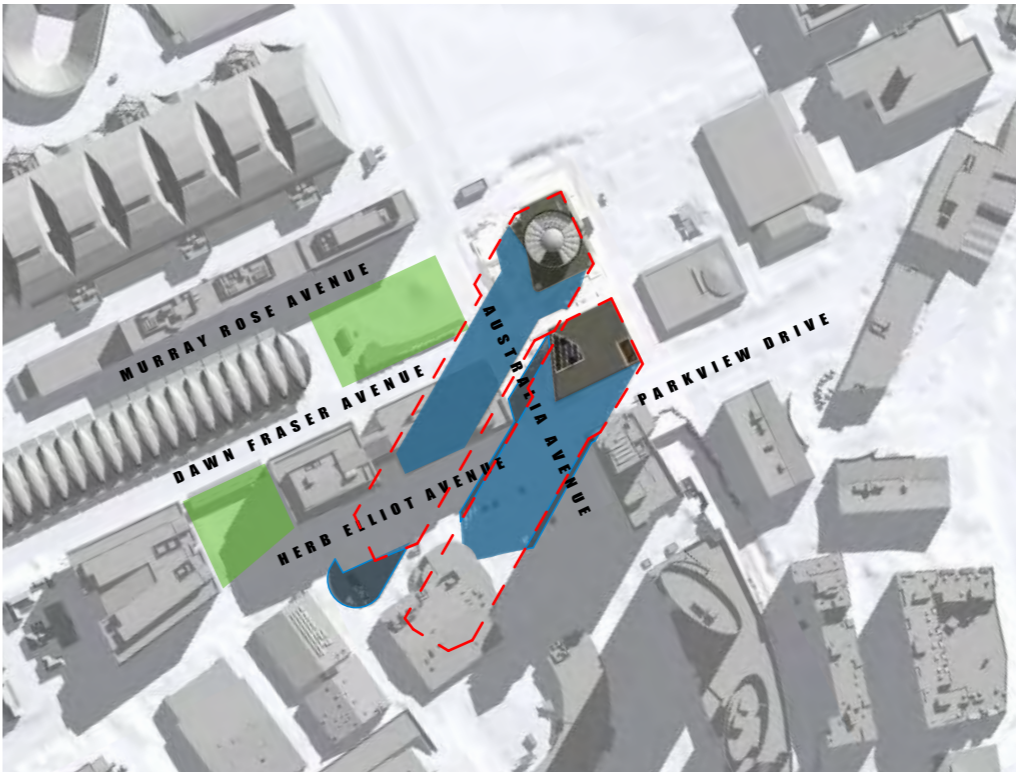


21 JUNE 10:00am



21 JUNE 9:00am

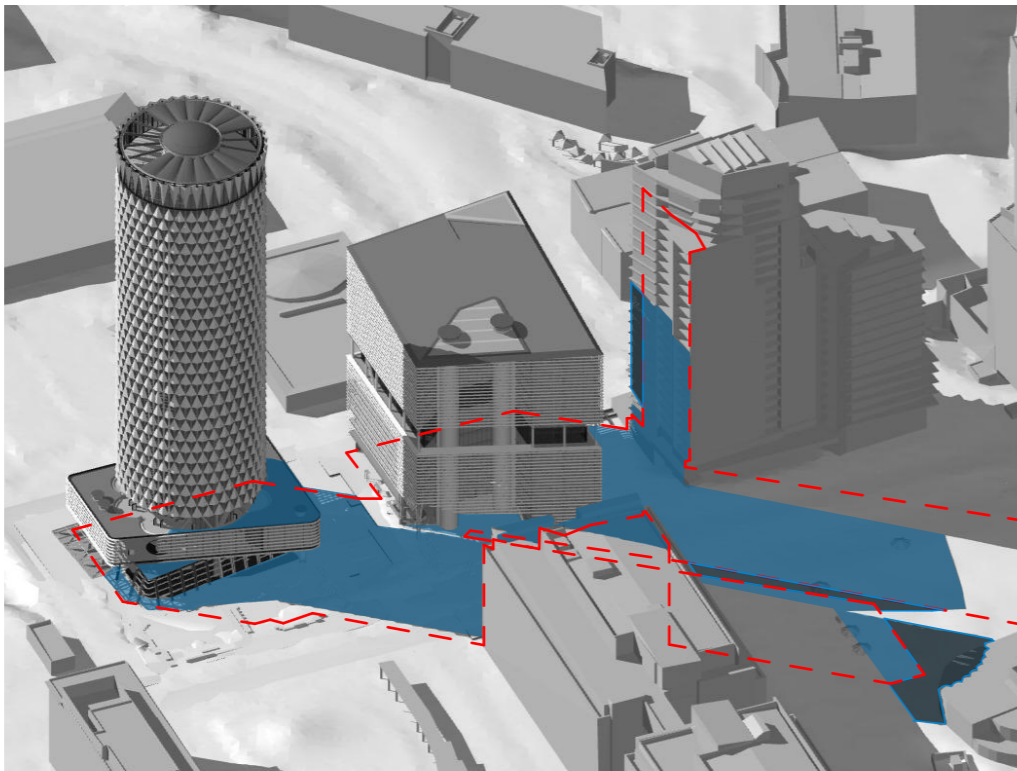
ADDITIONAL SHADOW 32% SMALLER THAN SEPP



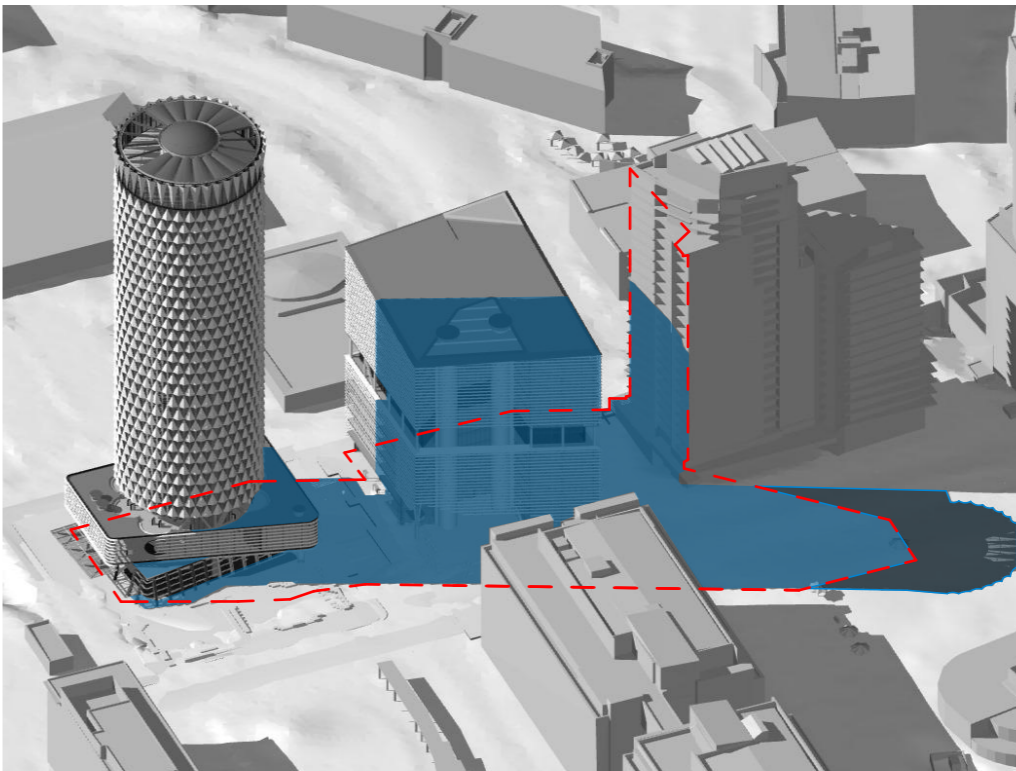
21 JUNE 10:00am

ADDITIONAL SHADOW 22% SMALLER THAN SEPP

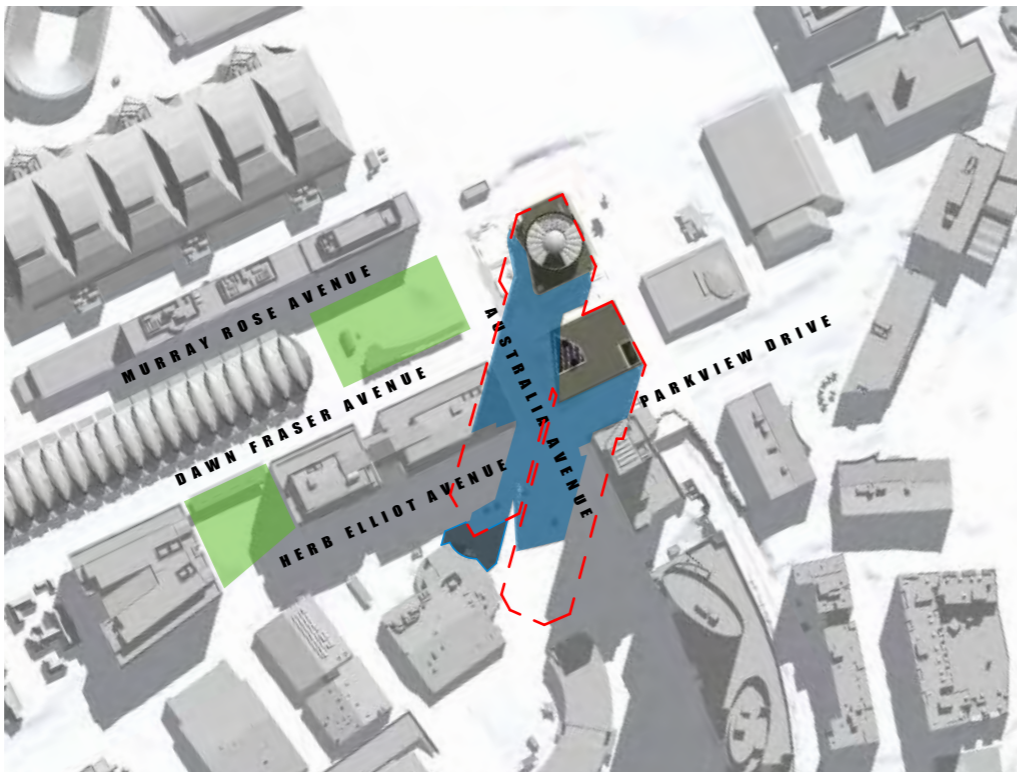
- SHADOW OF BUILDING ENVELOPE ENVISAGED BY THE MASTER PLAN 2030 (2018 REVIEW)
- ADDITIONAL SHADOW
- ADDITIONAL OVER SEPP
- PUBLIC DOMAIN



21 JUNE 11:00am

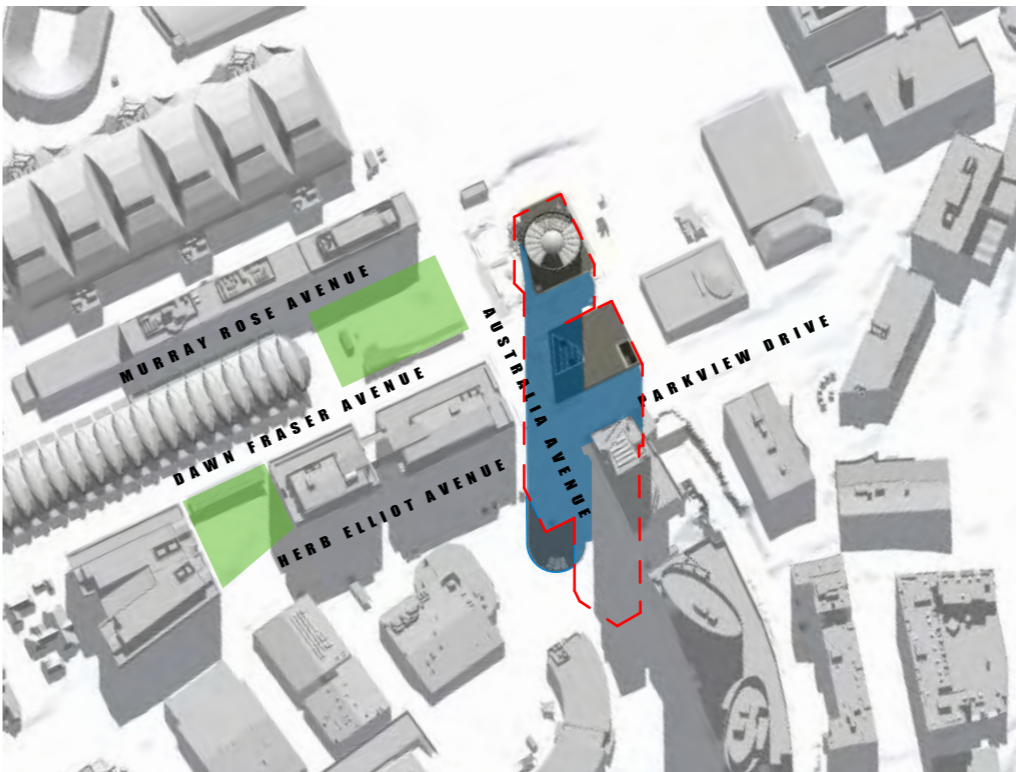


21 JUNE 12:00pm



21 JUNE 11:00am

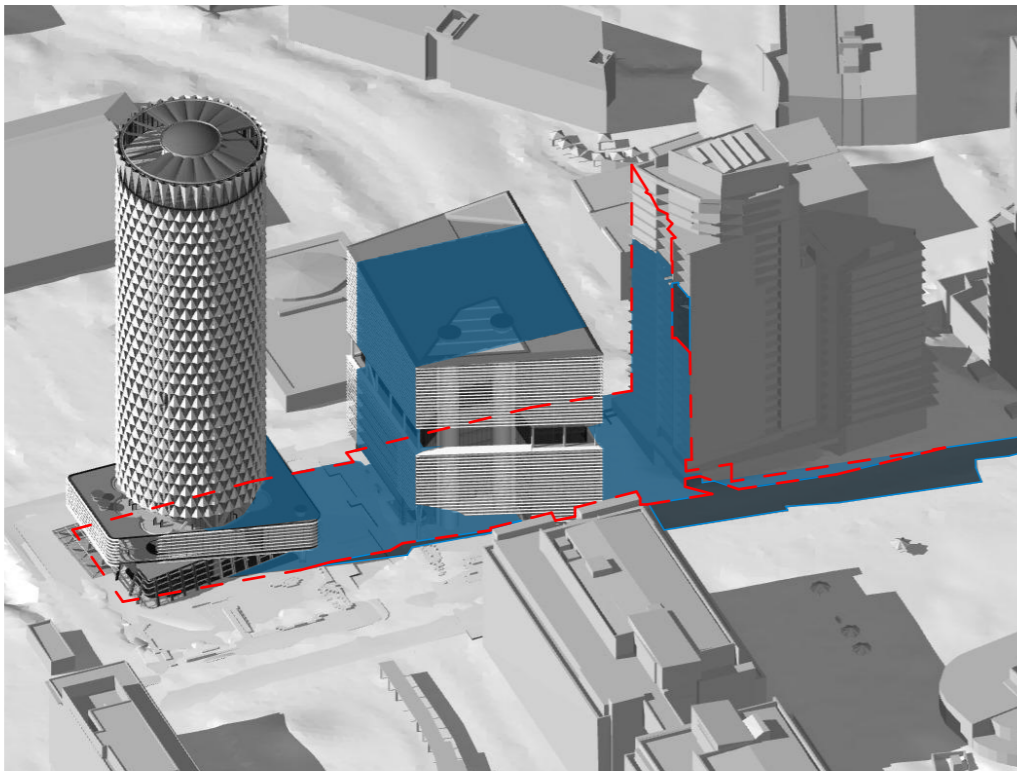
ADDITIONAL SHADOW 23% SMALLER THAN MASTER PLAN SHADOW



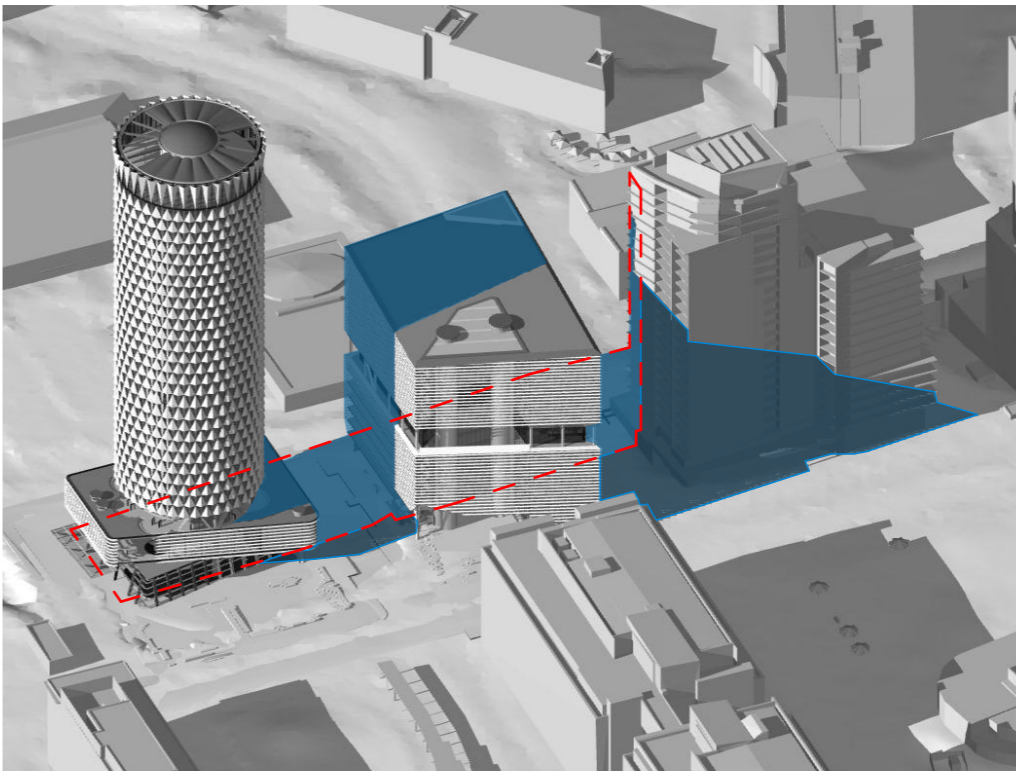
21 JUNE 12:00pm

ADDITIONAL SHADOW 23% SMALLER THAN MASTER PLAN SHADOW

- SHADOW OF BUILDING ENVELOPE ENVISAGED BY THE MASTER PLAN 2030 (2018 REVIEW)
- ADDITIONAL SHADOW
- ADDITIONAL OVER SEPP
- PUBLIC DOMAIN



21 JUNE 1:00pm

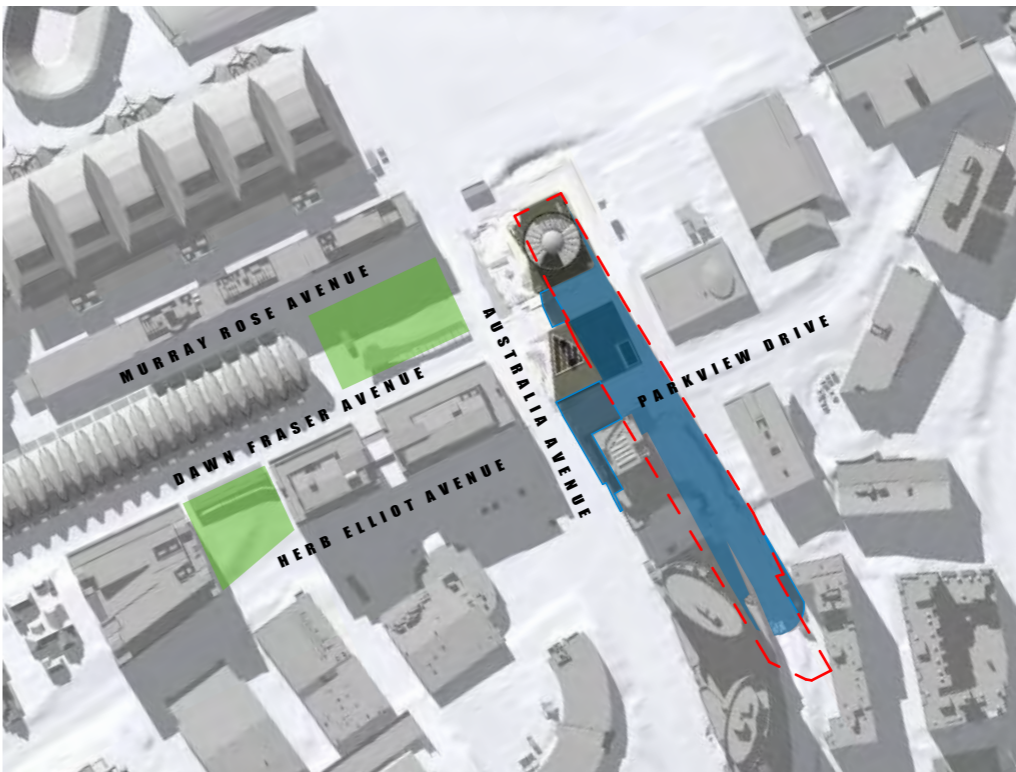


21 JUNE 2:00pm



21 JUNE 1:00pm

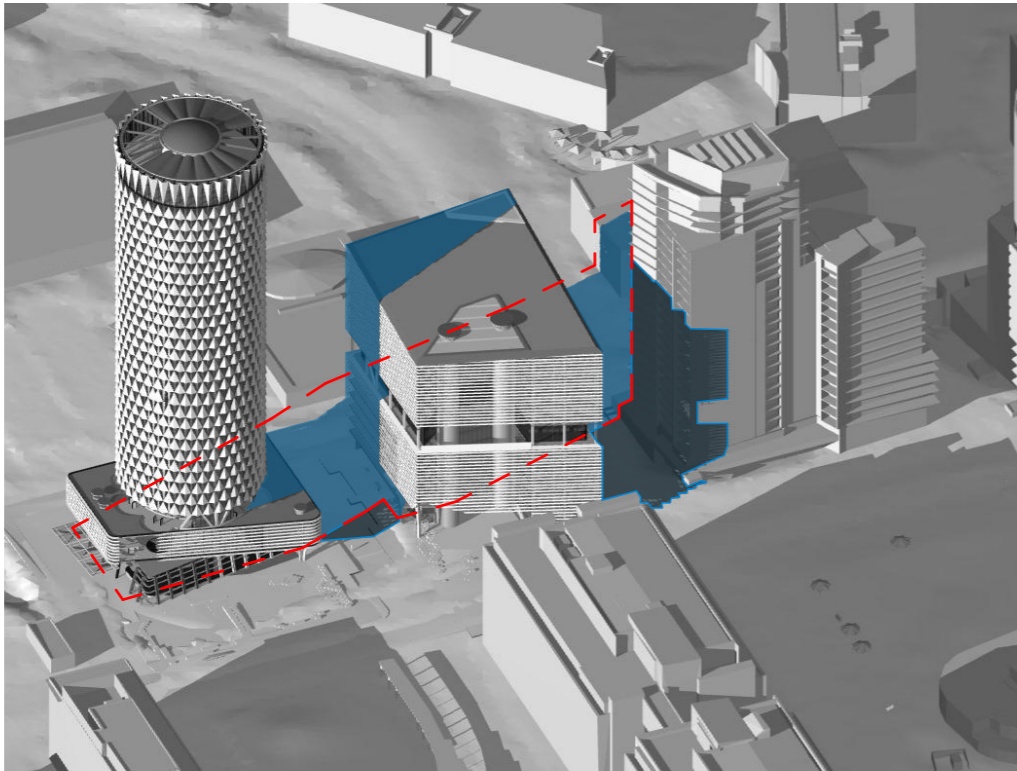
ADDITIONAL SHADOW 50% SMALLER THAN MASTER PLAN SHADOW



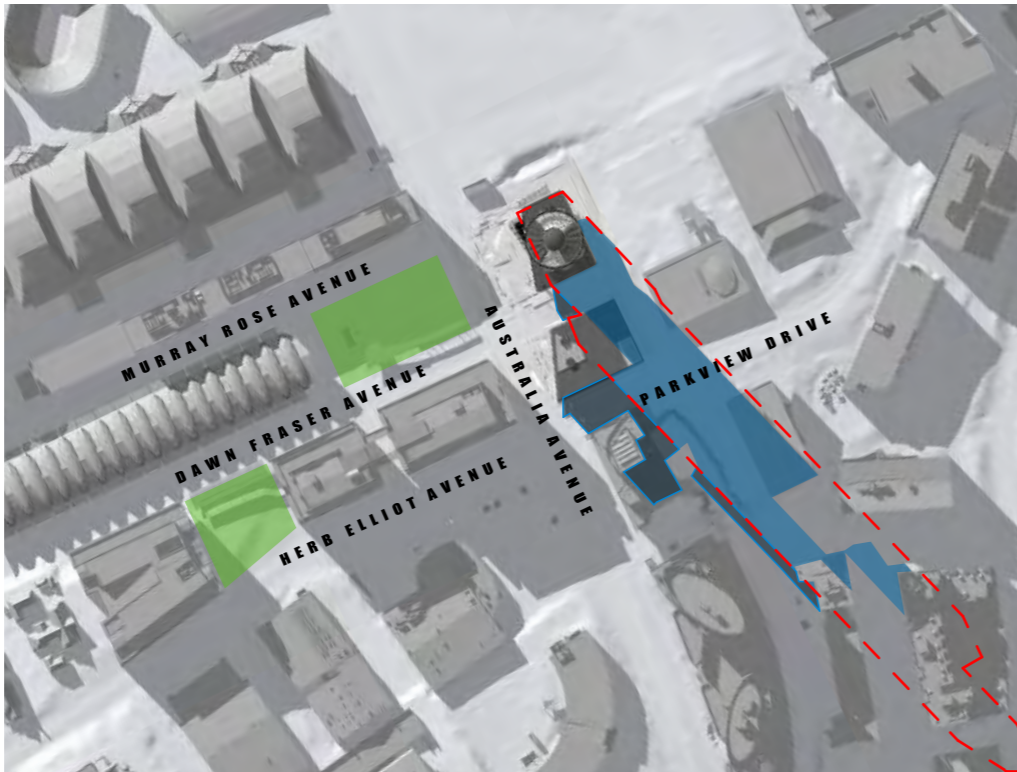
21 JUNE 2:00pm

ADDITIONAL SHADOW 20% SMALLER THAN MASTER PLAN SHADOW

- SHADOW OF BUILDING ENVELOPE ENVISAGED BY THE MASTER PLAN 2030 (2018 REVIEW)
- ADDITIONAL SHADOW
- ADDITIONAL OVER SEPP
- PUBLIC DOMAIN



21 JUNE 3:00pm

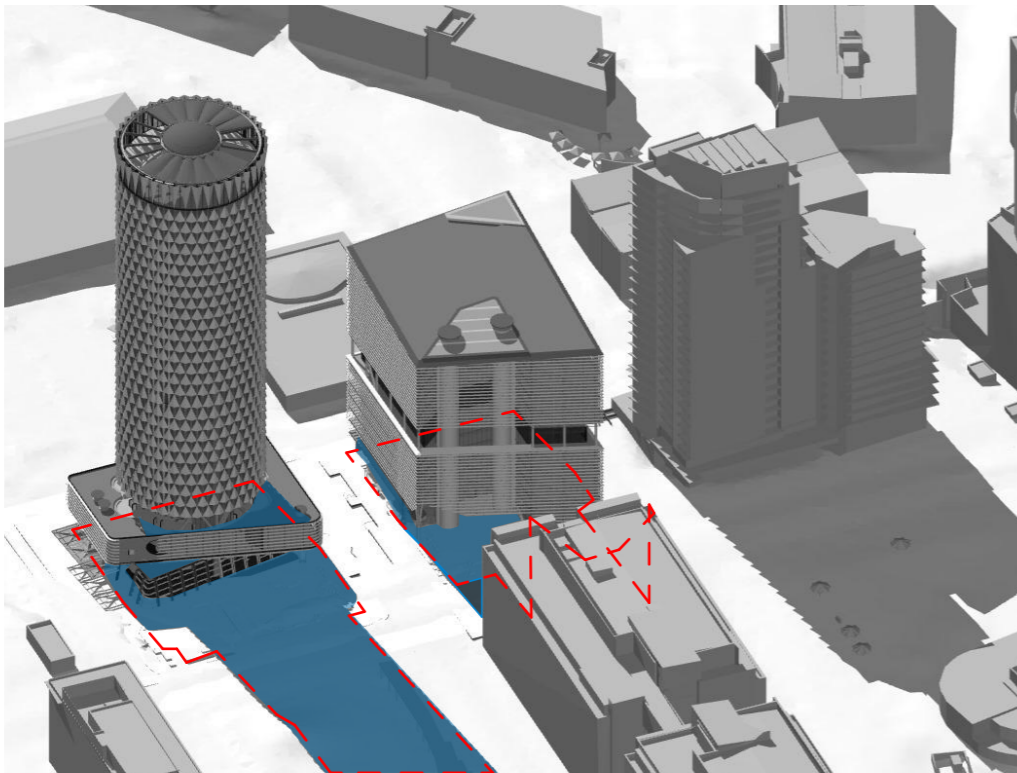


21 JUNE 3:00pm

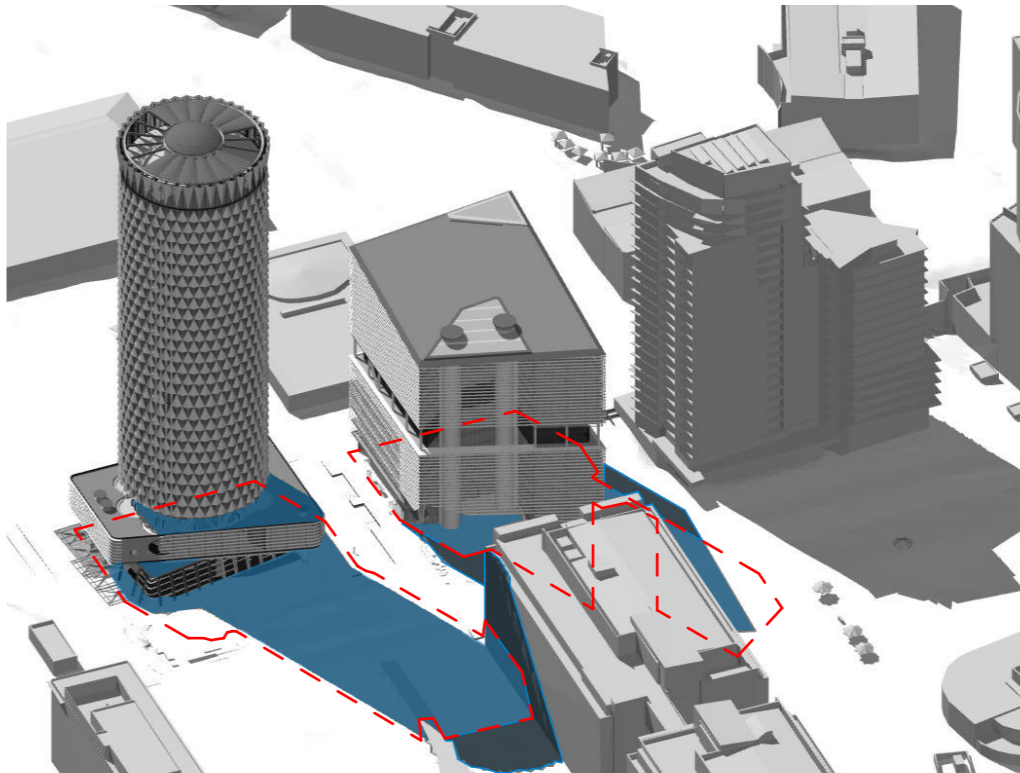
ADDITIONAL SHADOW 40% SMALLER THAN MASTER PLAN SHADOW

OVERALL TOTAL:
30% LESS ADDITIONAL SHADOW THAN MASTER PLAN ENVELOPE SHADOW

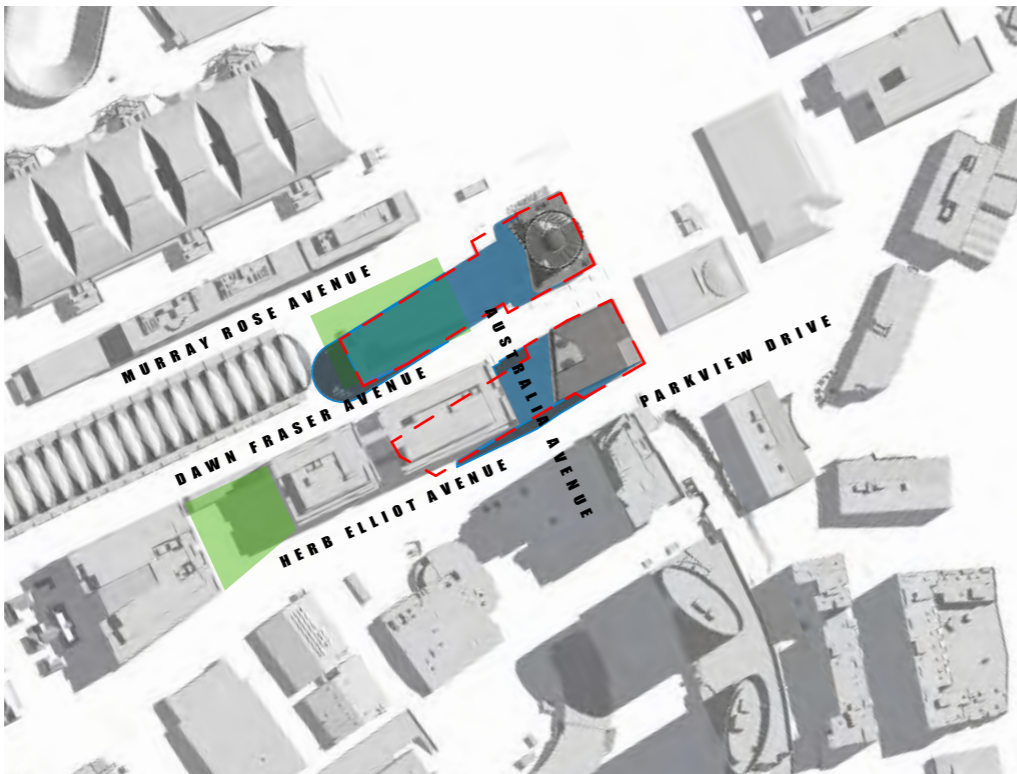
- SHADOW OF BUILDING ENVELOPE ENVISAGED BY THE MASTER PLAN 2030 (2018 REVIEW)
- ADDITIONAL SHADOW
- ADDITIONAL OVER SEPP
- PUBLIC DOMAIN



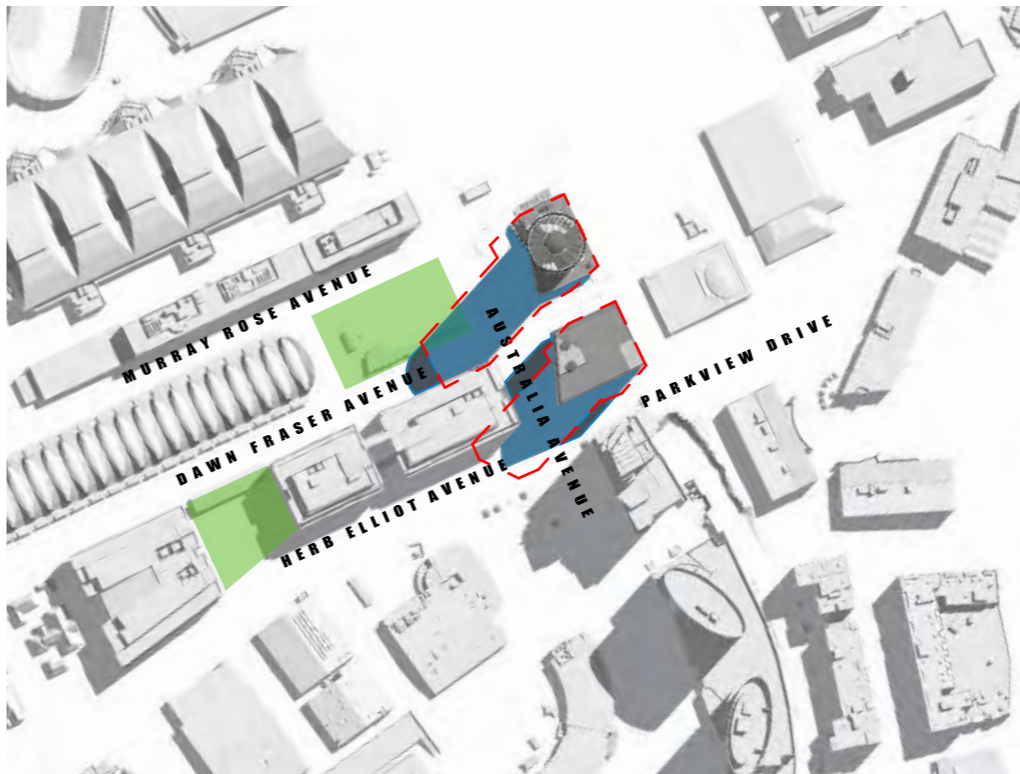
23 SEPT 9:00am



23 SEPT 10:00am

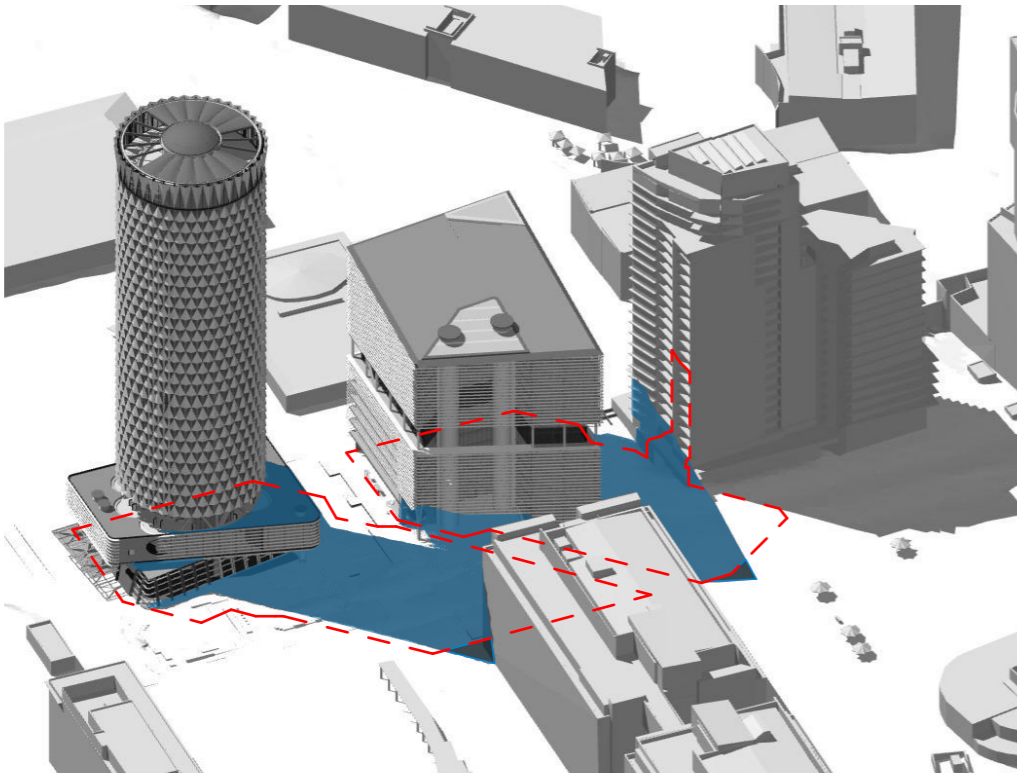


23 SEPT 9 :00am

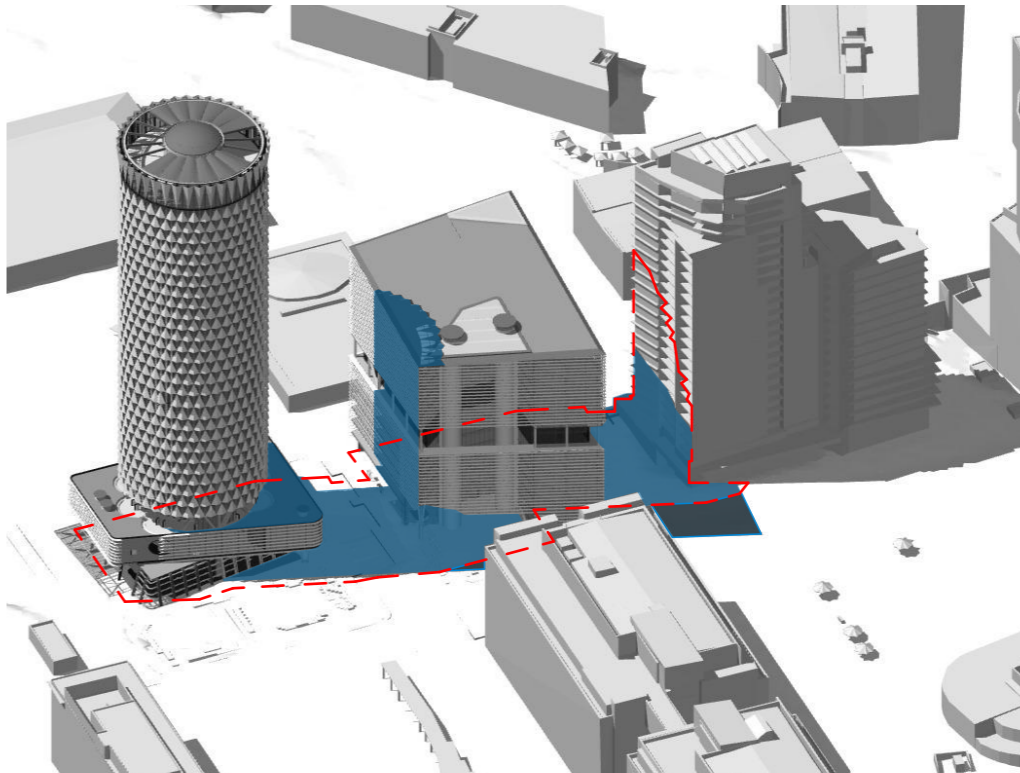


23 SEPT 10 :00am

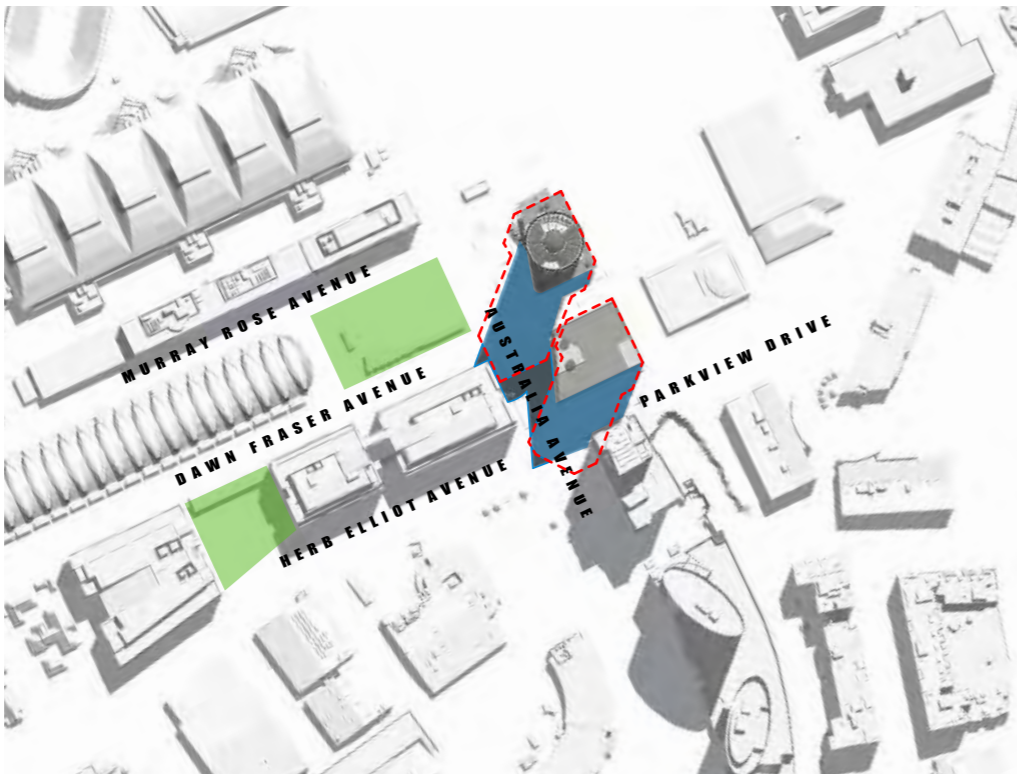
- SHADOW OF BUILDING ENVELOPE ENVISAGED BY THE MASTER PLAN 2030 (2018 REVIEW)
- ADDITIONAL SHADOW
- ADDITIONAL OVER SEPP
- PUBLIC DOMAIN



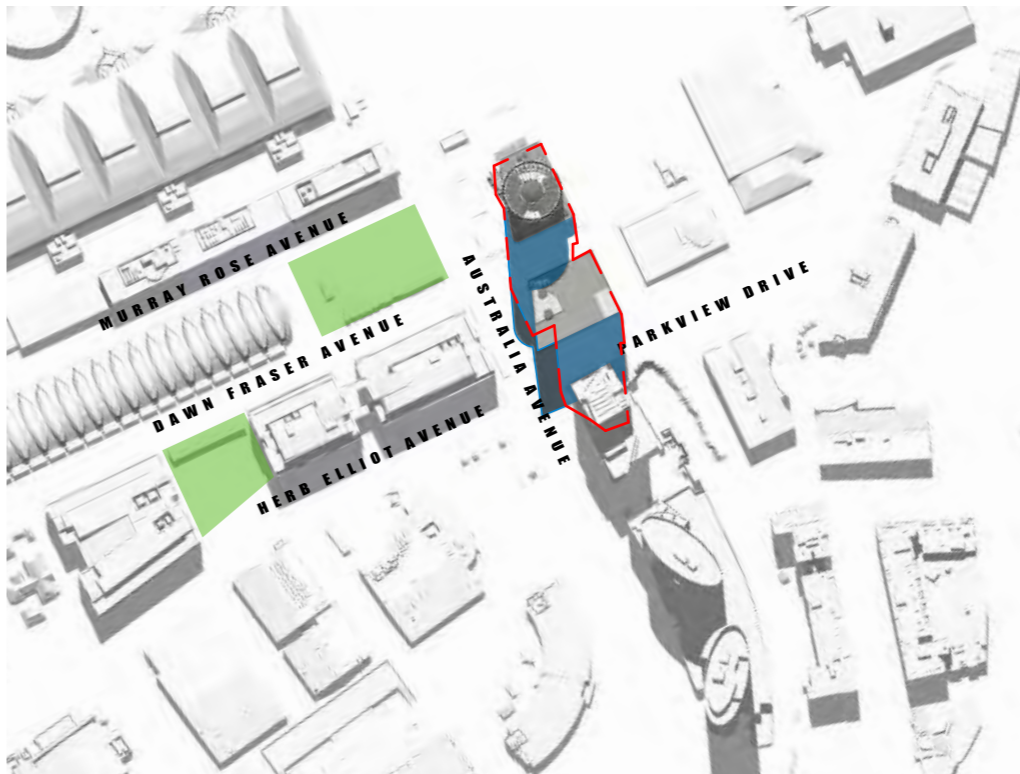
23 SEPT 11:00am



23 SEPT 12:00pm

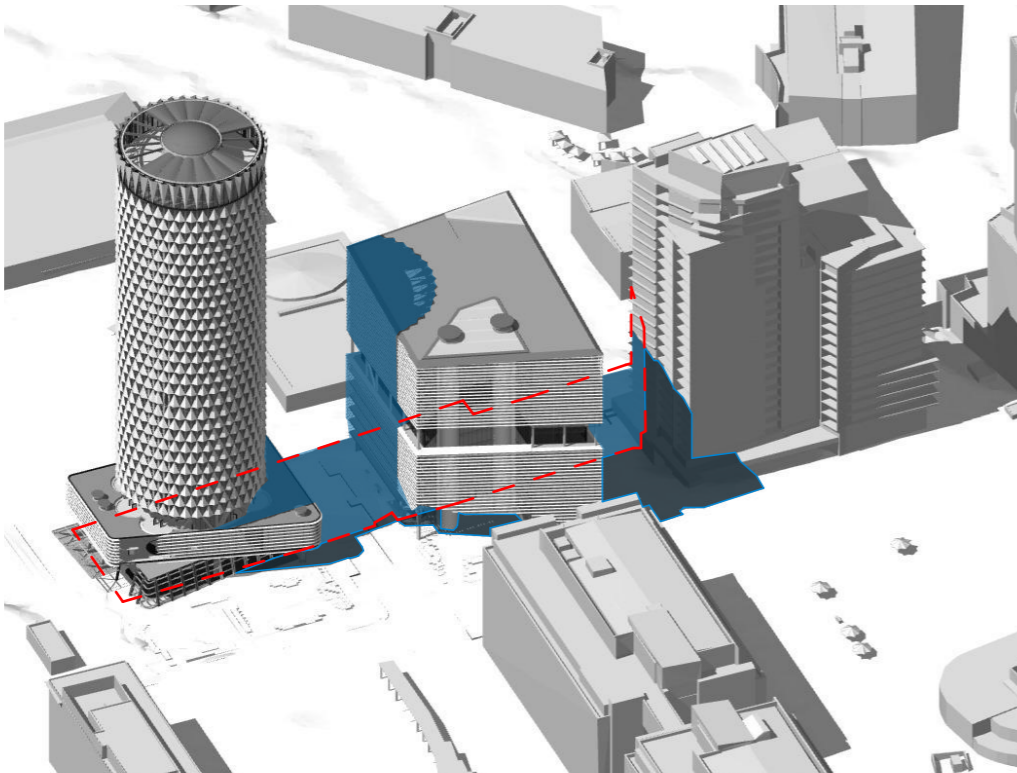


23 SEPT 11 :00am

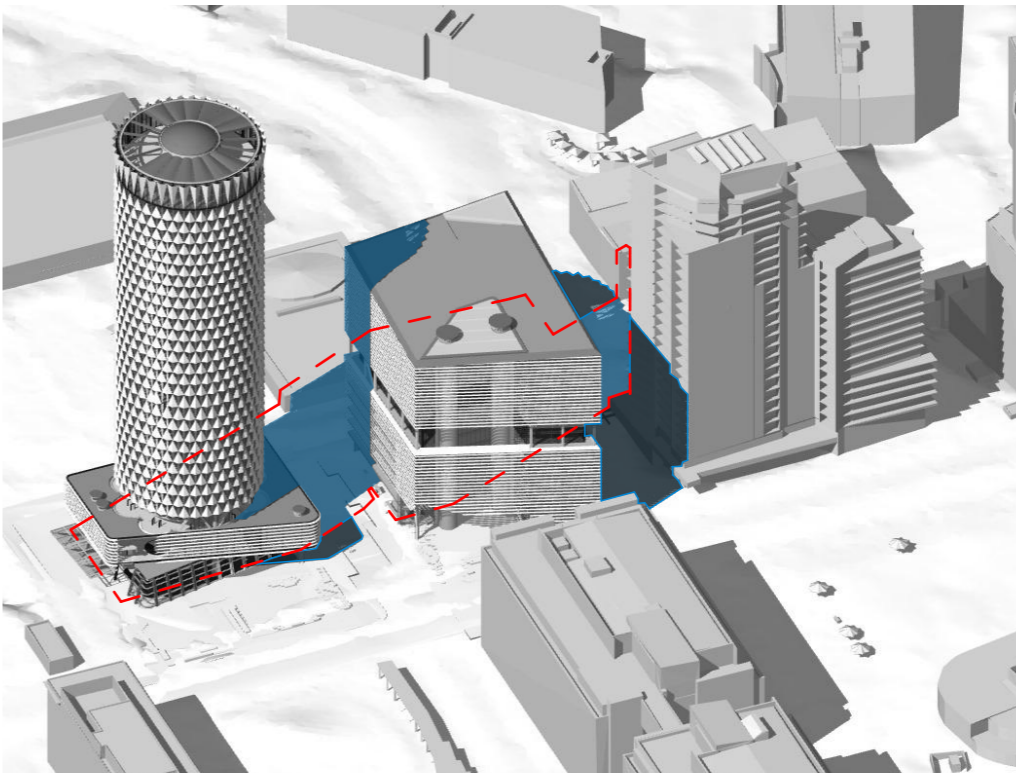


23 SEPT 12 :00pm

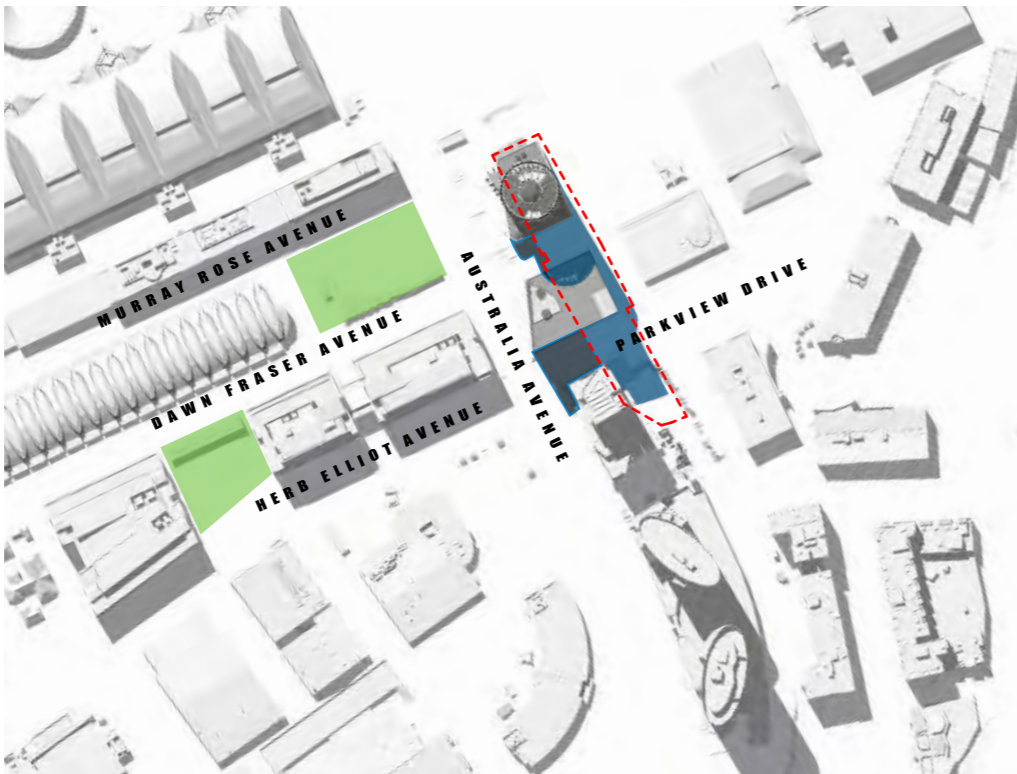
- SHADOW OF BUILDING ENVELOPE ENVISAGED BY THE MASTER PLAN 2030 (2018 REVIEW)
- ADDITIONAL SHADOW
- ADDITIONAL OVER SEPP
- PUBLIC DOMAIN



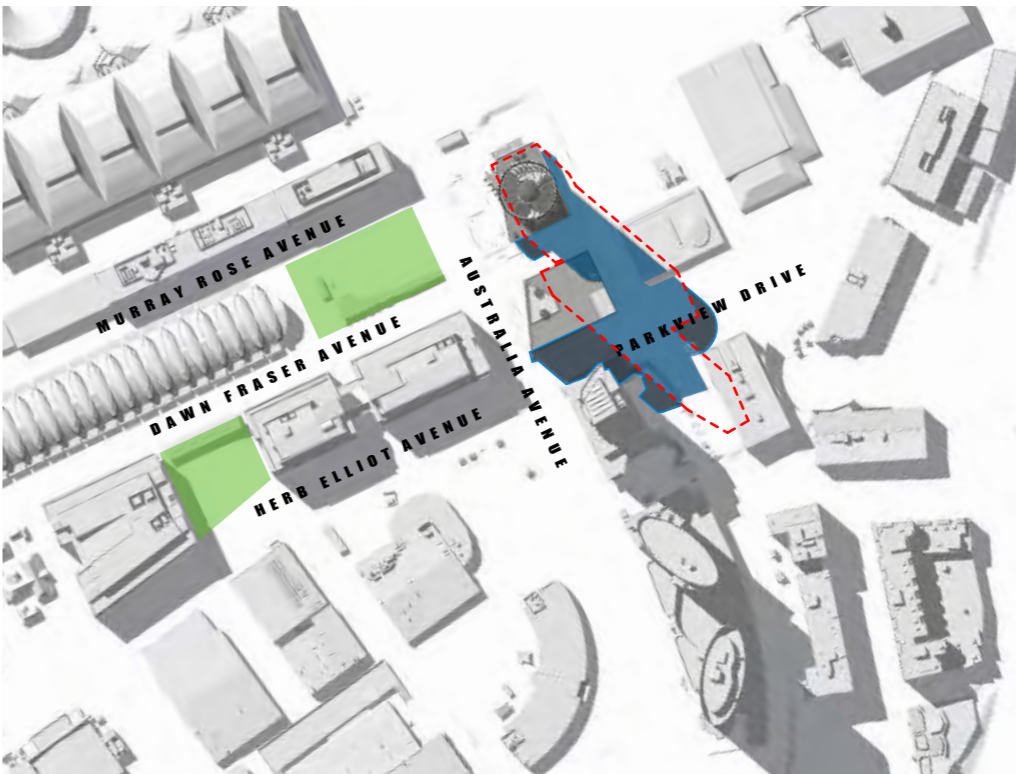
23 SEPT 1:00pm



23 SEPT 2:00pm

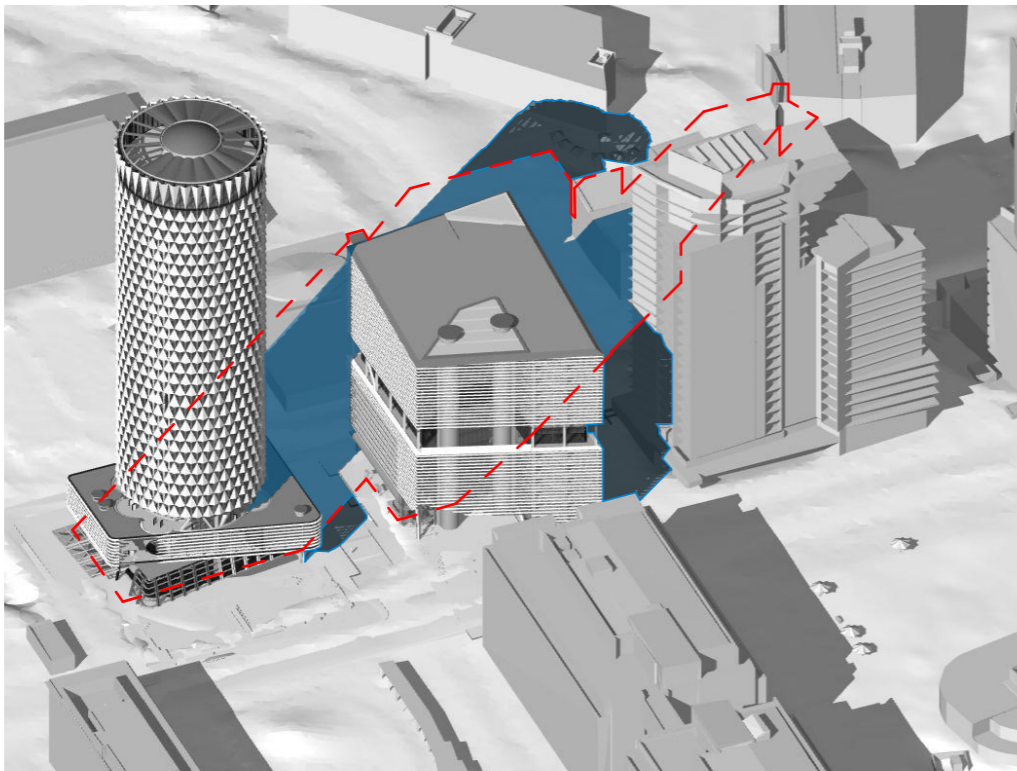


23 SEPT 1 :00pm

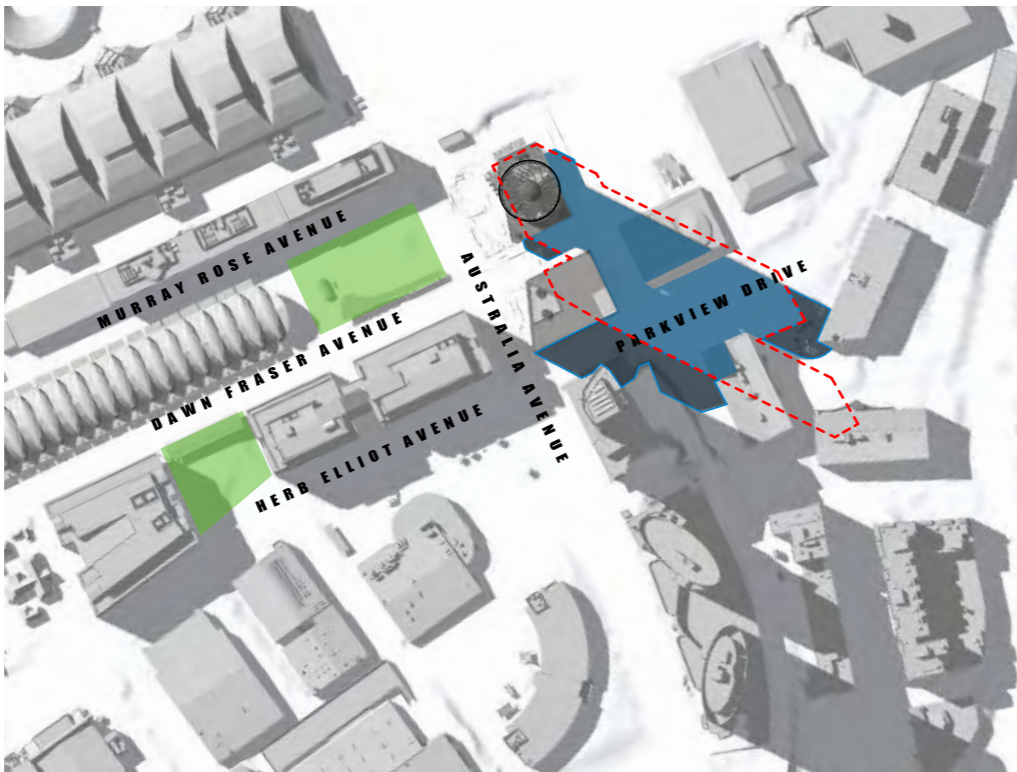


23 SEPT 2 :00pm

- SHADOW OF BUILDING ENVELOPE ENVISAGED BY THE MASTER PLAN 2030 (2018 REVIEW)
- ADDITIONAL SHADOW
- ADDITIONAL OVER SEPP
- PUBLIC DOMAIN

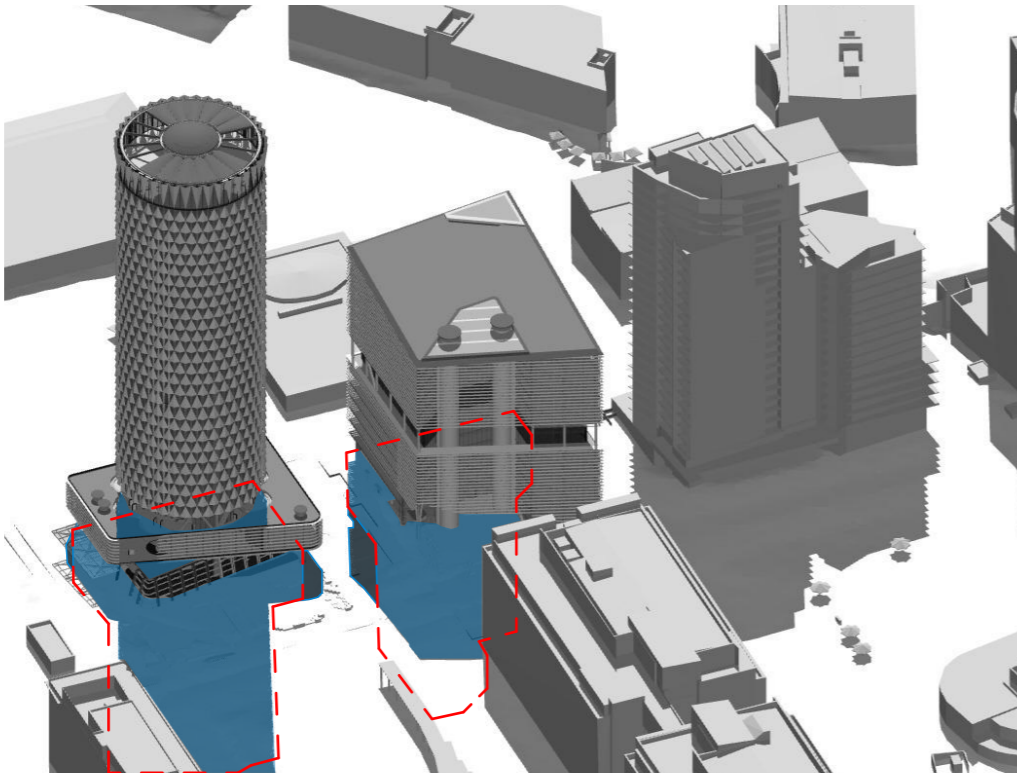


23 SEPT 3:00pm

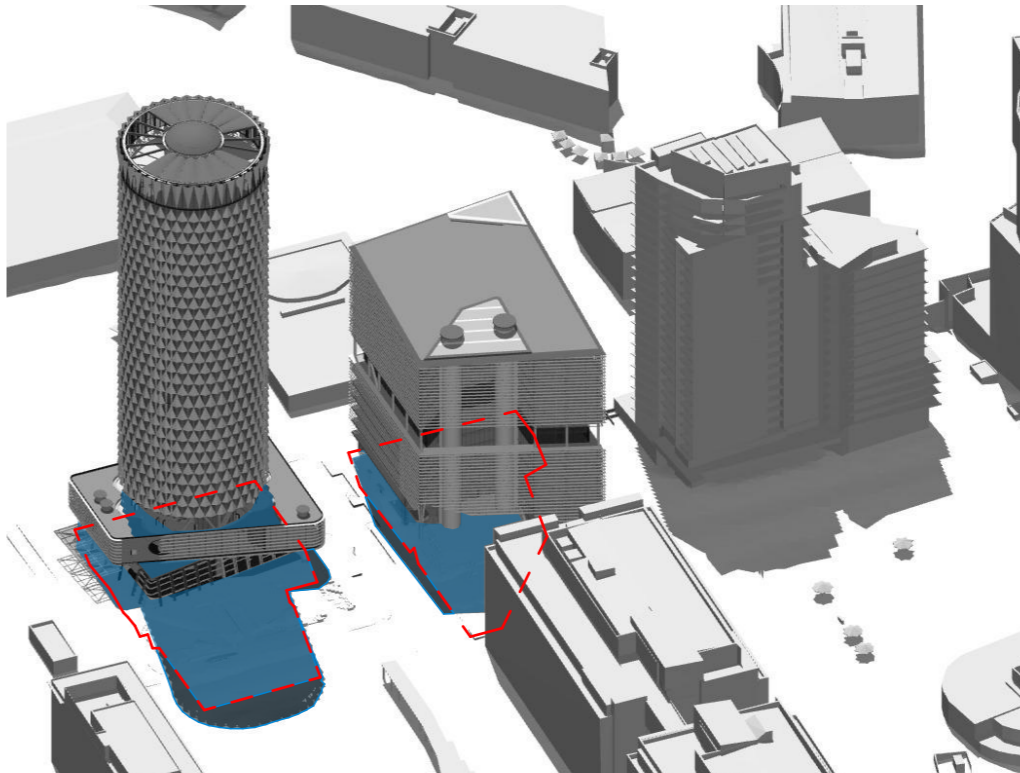


23 SEPT 3 :00pm

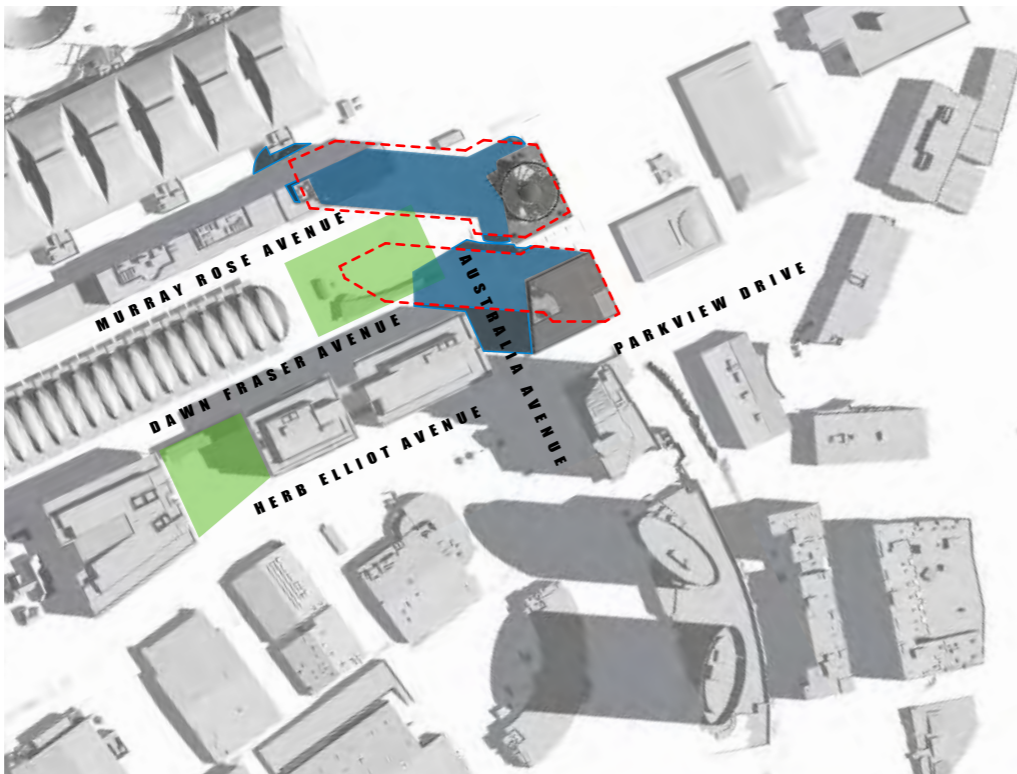
- SHADOW OF BUILDING ENVELOPE ENVISAGED BY THE MASTER PLAN 2030 (2018 REVIEW)
- ADDITIONAL SHADOW
- ADDITIONAL OVER SEPP
- PUBLIC DOMAIN



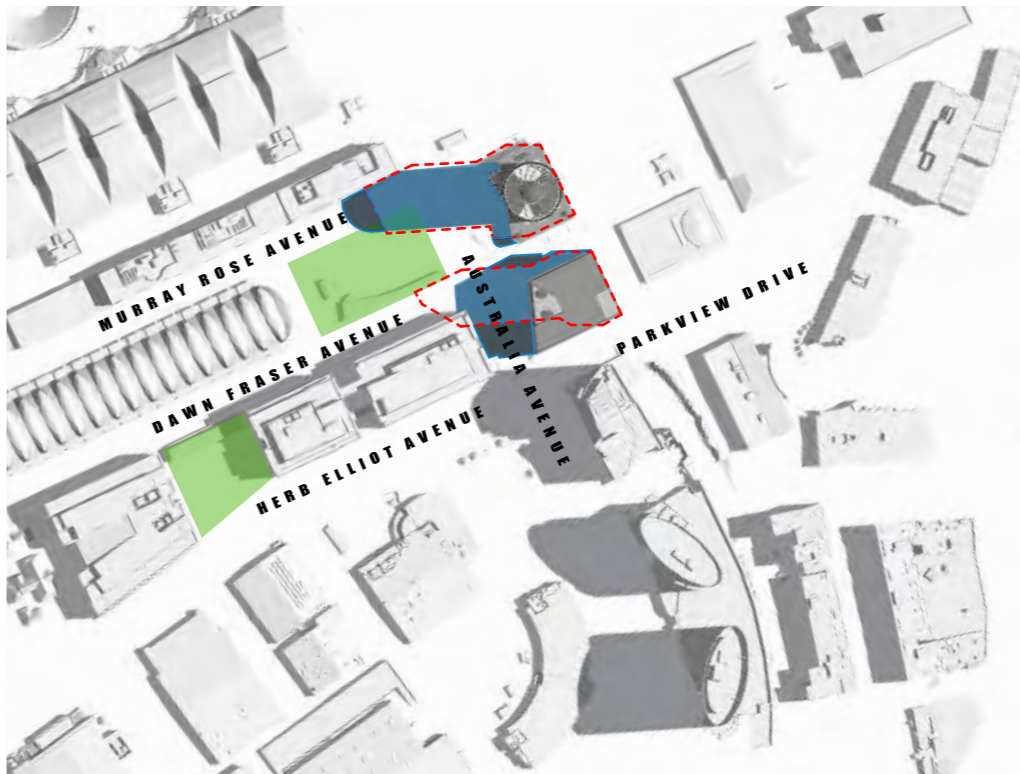
22 DEC 9:00am



22 DEC 10:00am

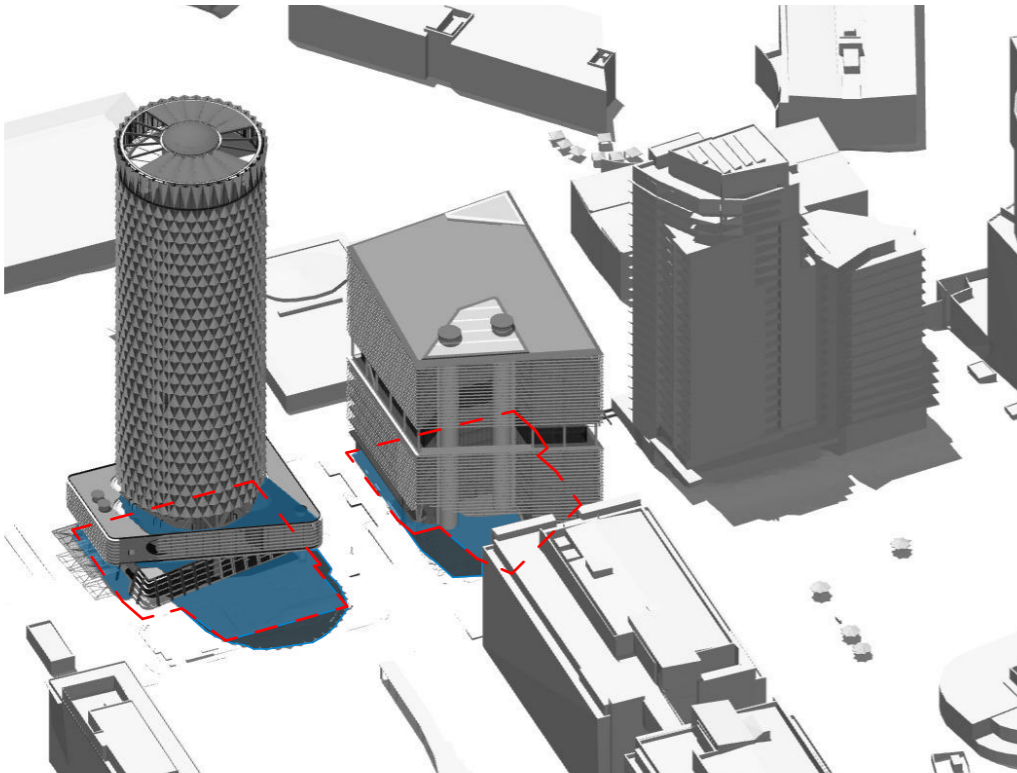


22 DEC 9 :00am

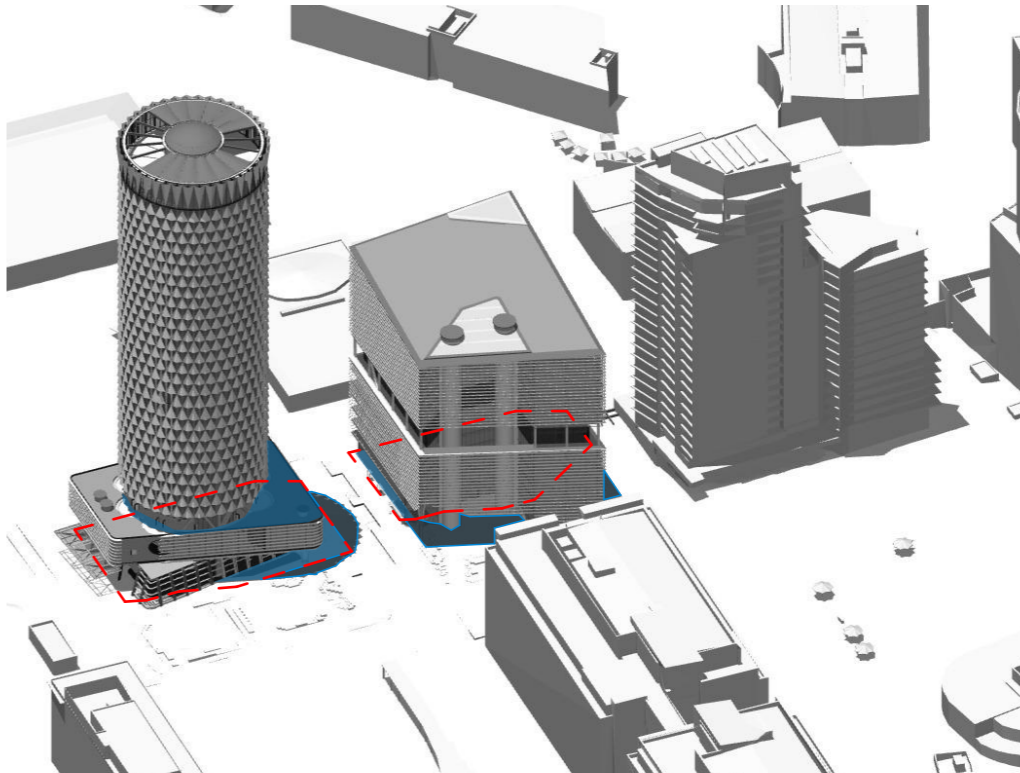


22 DEC 10 :00am

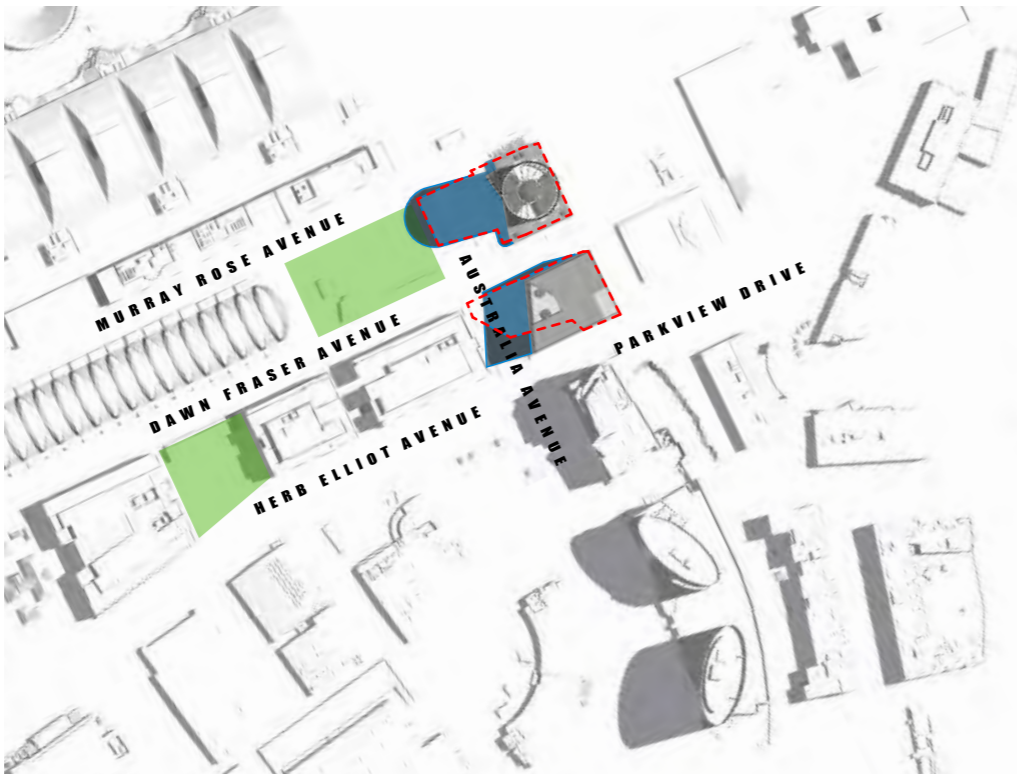
- SHADOW OF BUILDING ENVELOPE ENVISAGED BY THE MASTER PLAN 2030 (2018 REVIEW)
- ADDITIONAL SHADOW
- ADDITIONAL OVER SEPP
- PUBLIC DOMAIN



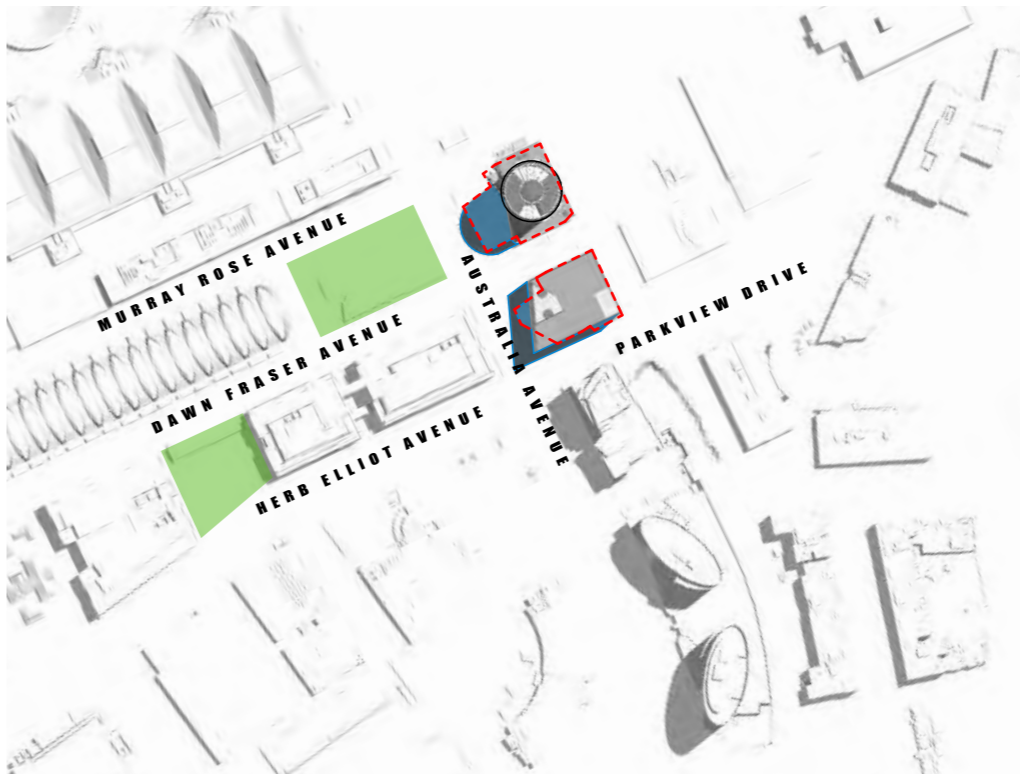
22 DEC 11:00am



22 DEC 12:00pm

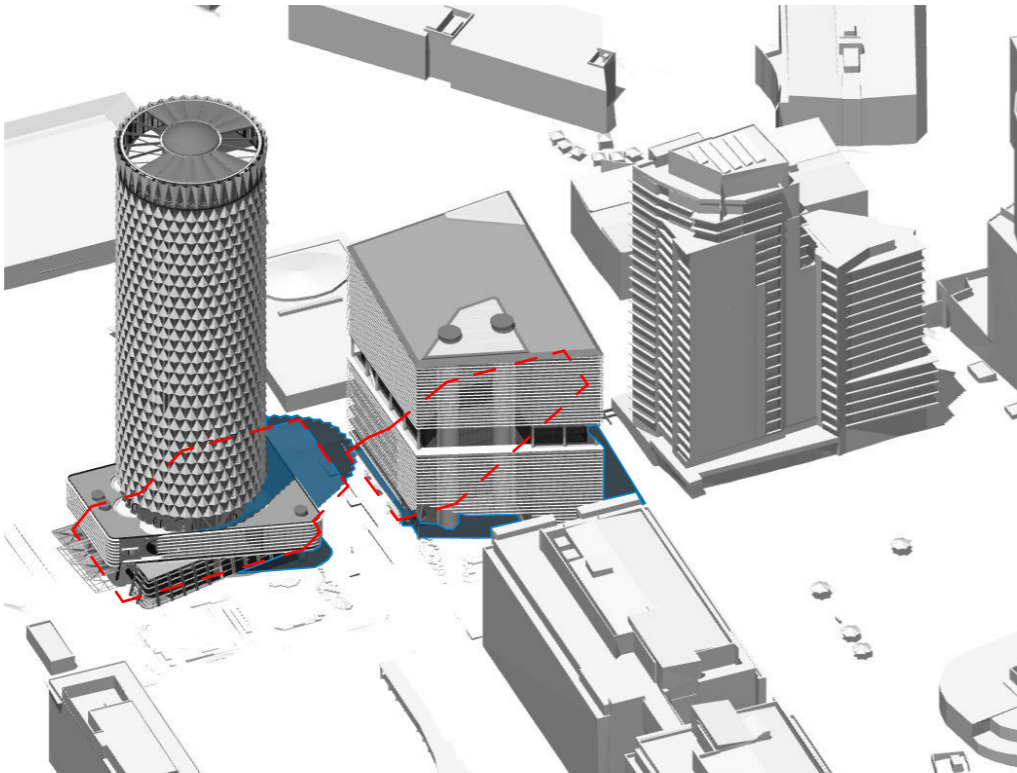


22 DEC 11 :00am

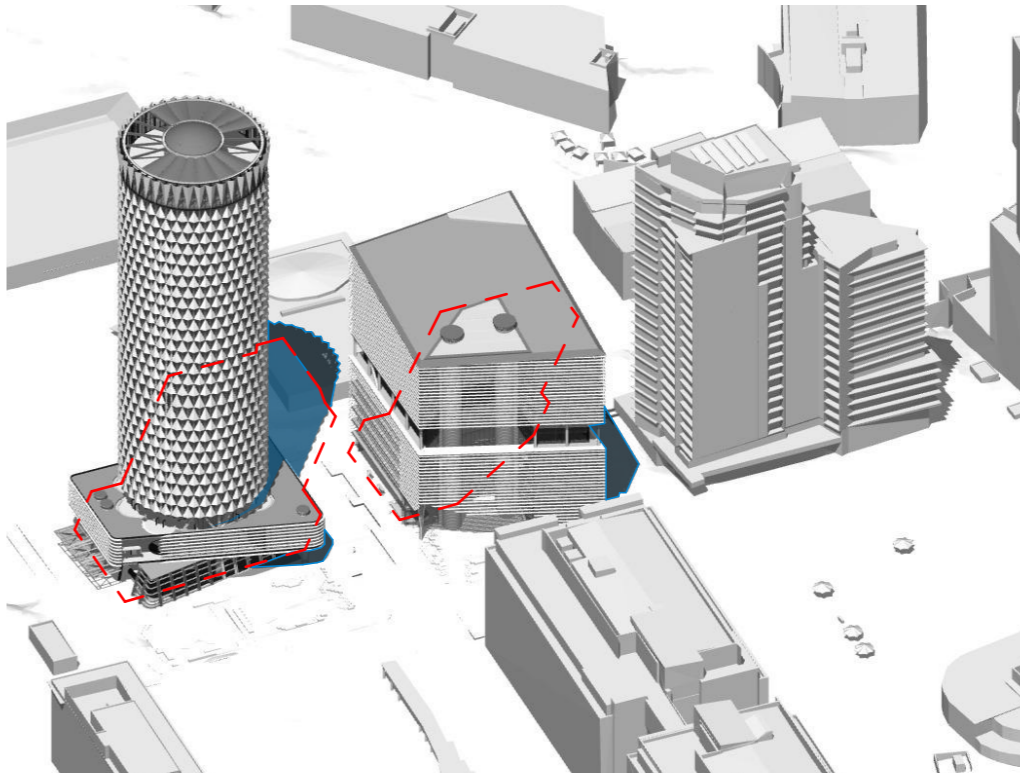


22 DEC 12 :00pm

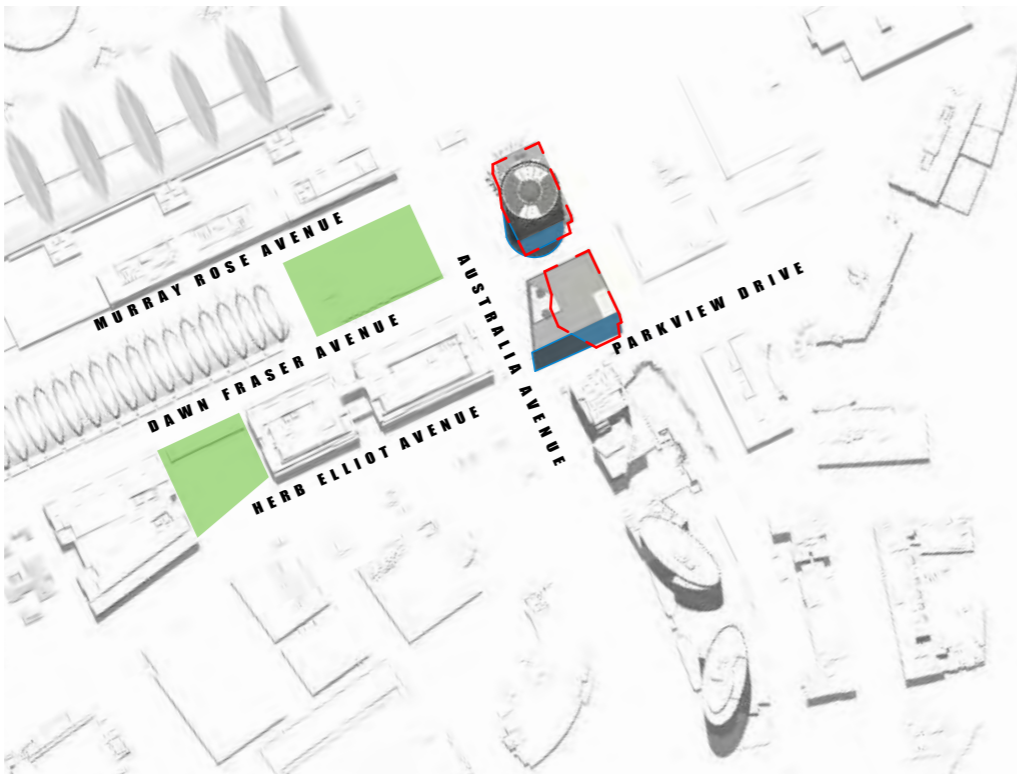
- SHADOW OF BUILDING ENVELOPE ENVISAGED BY THE MASTER PLAN 2030 (2018 REVIEW)
- ADDITIONAL SHADOW
- ADDITIONAL OVER SEPP
- PUBLIC DOMAIN



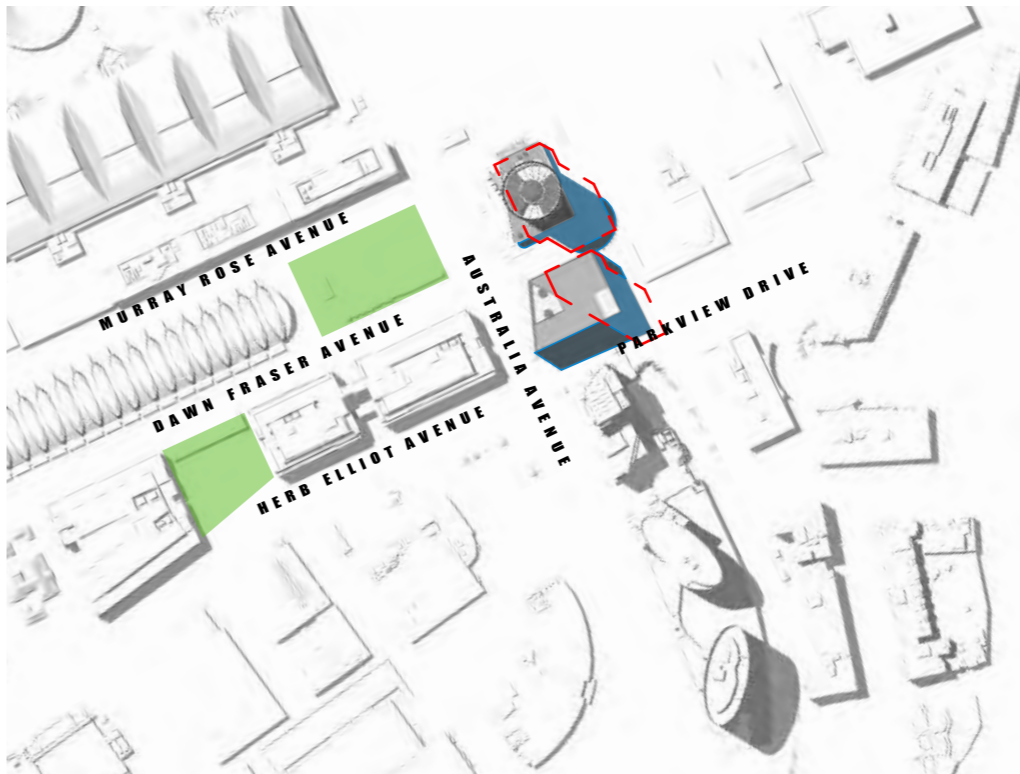
22 DEC 1:00pm



22 DEC 2:00pm

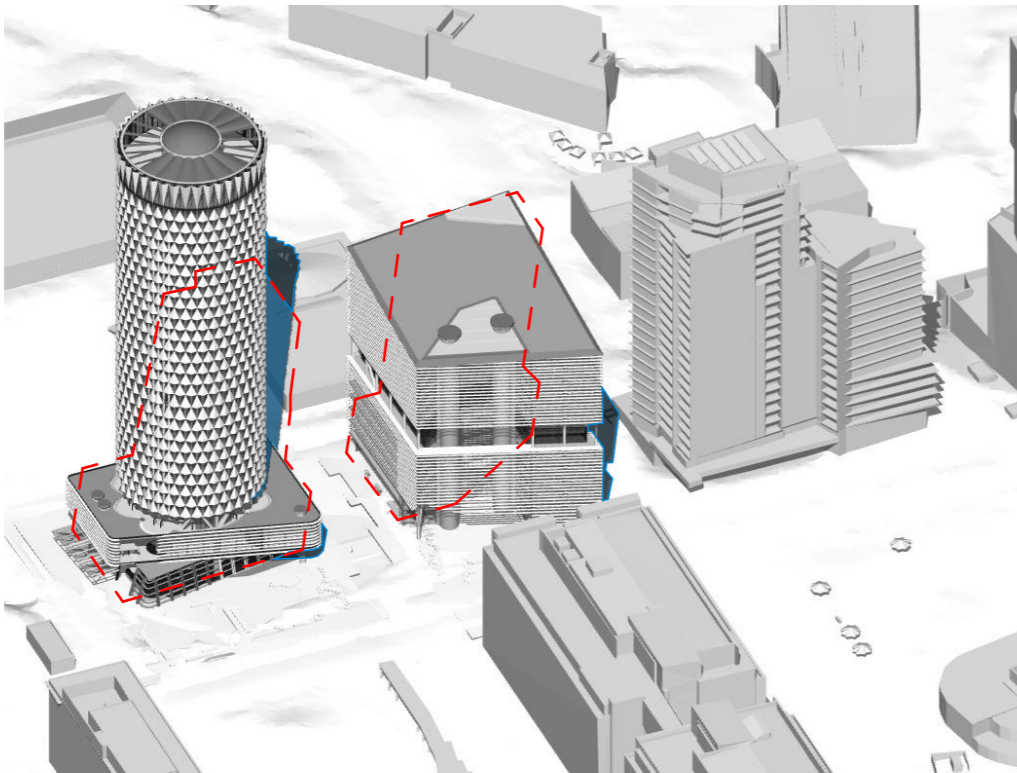


22 DEC 1:00pm

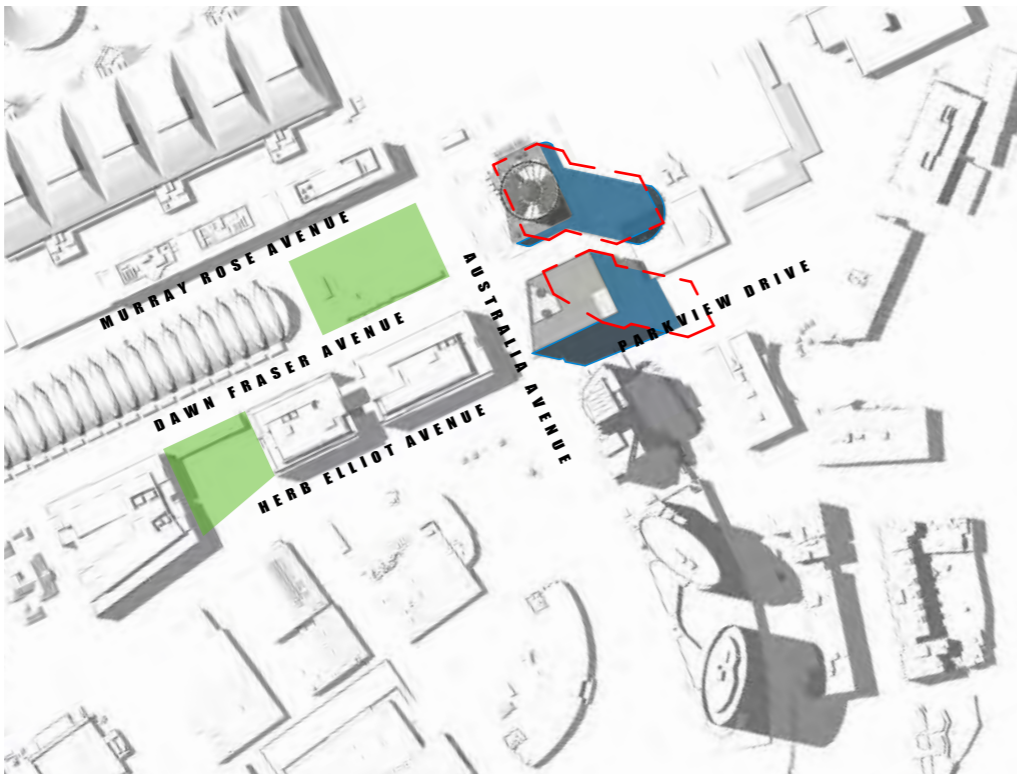


22 DEC 2:00pm

- SHADOW OF BUILDING ENVELOPE ENVISAGED BY THE MASTER PLAN 2030 (2018 REVIEW)
- ADDITIONAL SHADOW
- ADDITIONAL OVER SEPP
- PUBLIC DOMAIN



22 DEC 3:00pm

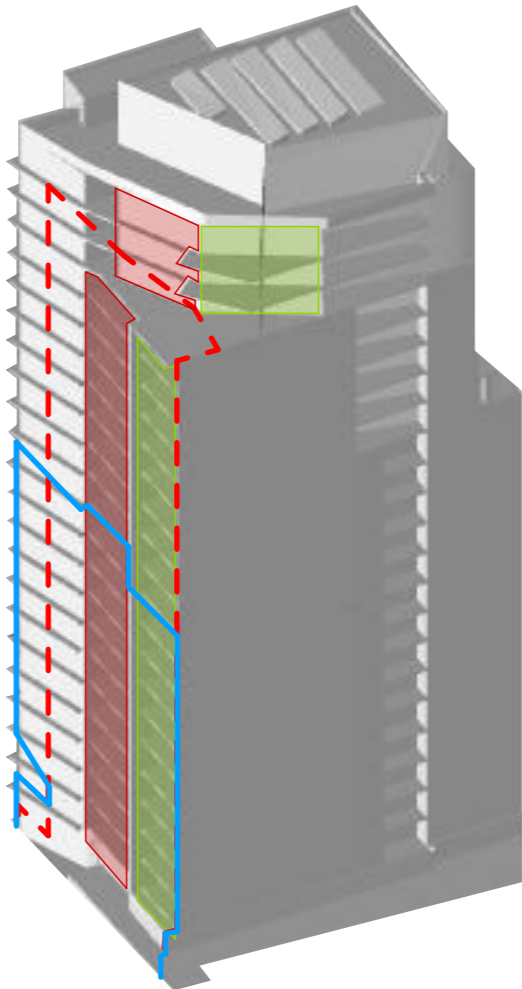


22 DEC 3 :00pm

- SHADOW OF BUILDING ENVELOPE ENVISAGED BY THE MASTER PLAN 2030 (2018 REVIEW)
- ADDITIONAL SHADOW
- ADDITIONAL OVER SEPP
- PUBLIC DOMAIN

OVERSHADOWING FROM
BUILDING ENVELOPE
ENVISAGED BY THE
MASTER PLAN 2030
(2018 REVIEW):
87% APARTMENTS A
89% APARTMENTS B
88% TOTAL

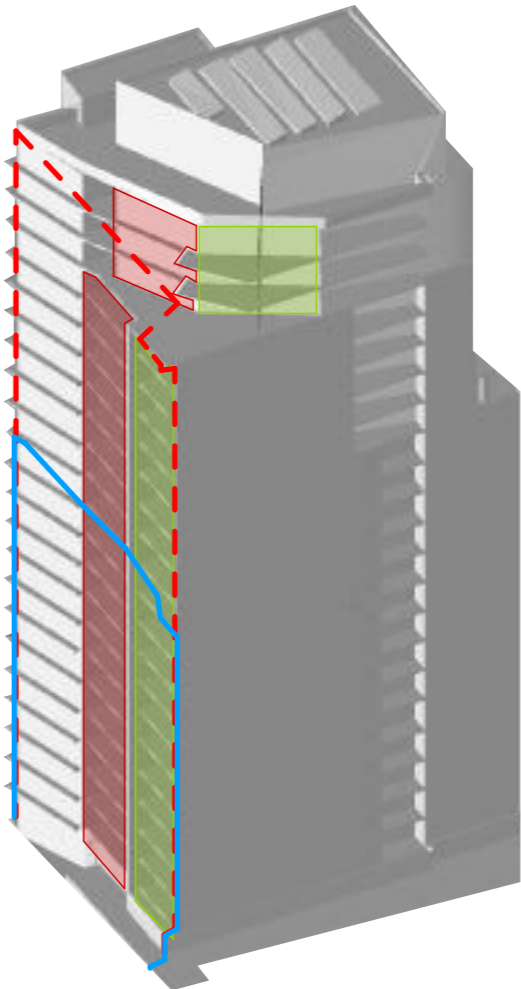
OVERSHADOWING:
48% APARTMENTS A
52% APARTMENTS B
50% TOTAL



21 JUNE 11:00am

OVERSHADOWING FROM
BUILDING ENVELOPE
ENVISAGED BY THE
MASTER PLAN 2030
(2018 REVIEW):
87% APARTMENTS A
90% APARTMENTS B
89% TOTAL

OVERSHADOWING:
50% APARTMENTS A
52% APARTMENTS B
51% TOTAL

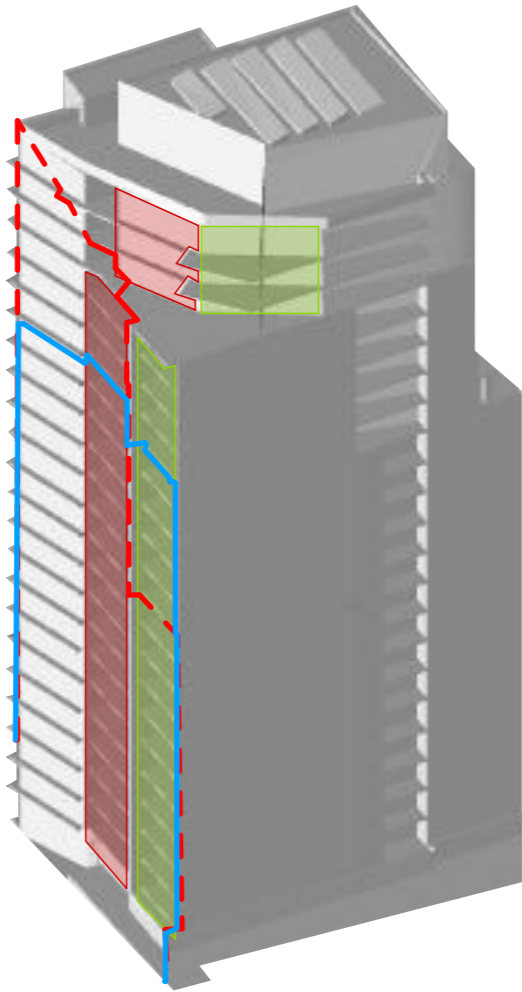


21 JUNE 12:00pm

SHADOW OF BUILDING
ENVELOPE ENVISAGED
BY THE MASTER PLAN 2030
(2018 REVIEW)
[Red dashed line]
SHADOW
[Blue solid line]
APARTMENTS A
[Green shaded area]
APARTMENTS B
[Red shaded area]

OVERSHADOWING FROM
BUILDING ENVELOPE
ENVISAGED BY THE
MASTER PLAN 2030
(2018 REVIEW):
52% APARTMENTS A
87% APARTMENTS B
70% TOTAL

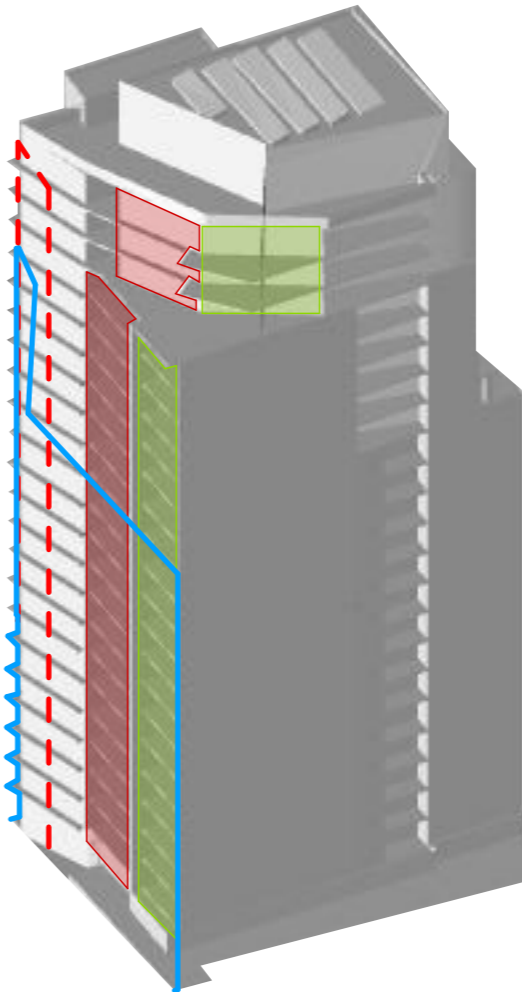
OVERSHADOWING:
70% APARTMENTS A
74% APARTMENTS B
72% TOTAL



21 JUNE 1:00pm

OVERSHADOWING FROM
BUILDING ENVELOPE
ENVISAGED BY THE
MASTER PLAN 2030
(2018 REVIEW):
0% APARTMENTS A
0% APARTMENTS B
0% TOTAL

OVERSHADOWING:
57% APARTMENTS A
57% APARTMENTS B
57% TOTAL

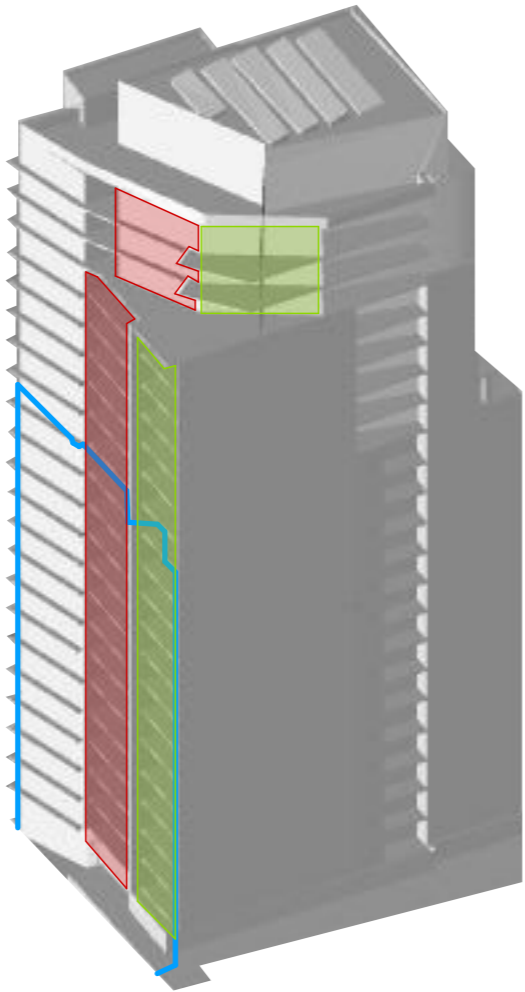


21 JUNE 2:00pm

- SHADOW OF BUILDING
ENVELOPE ENVISAGED
BY THE MASTER PLAN 2030
(2018 REVIEW)
- SHADOW
- APARTMENTS A
- APARTMENTS B

OVERSHADOWING FROM
BUILDING ENVELOPE
ENVISAGED BY THE
MASTER PLAN 2030
(2018 REVIEW):
0% APARTMENTS A
0% APARTMENTS B
0% TOTAL

OVERSHADOWING:
61% APARTMENTS A
61% APARTMENTS B
61% TOTAL

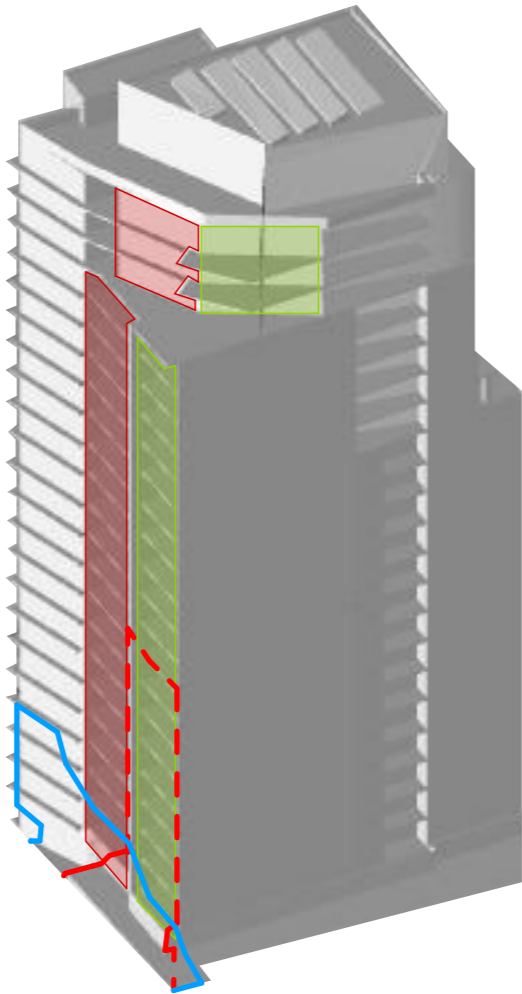


21 JUNE 3:00pm

- SHADOW OF BUILDING
ENVELOPE ENVISAGED
BY THE MASTER PLAN 2030
(2018 REVIEW)
- SHADOW
- APARTMENTS A
- APARTMENTS B

OVERSHADOWING FROM
BUILDING ENVELOPE
ENVISAGED BY THE
MASTER PLAN 2030
(2018 REVIEW):
40% APARTMENTS A
0% APARTMENTS B
20% TOTAL

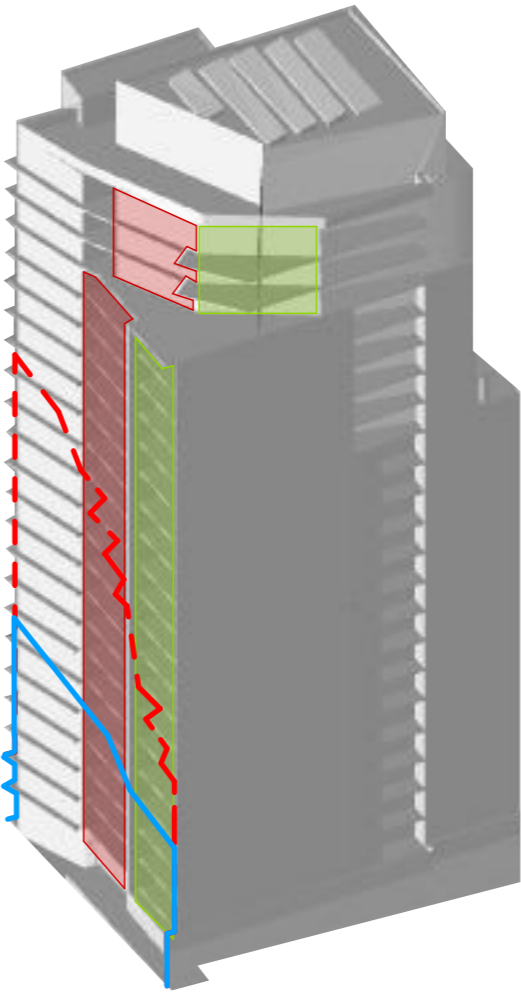
OVERSHADOWING:
4% APARTMENTS A
9% APARTMENTS B
7% TOTAL



23 SEPT 11:00am

OVERSHADOWING FROM
BUILDING ENVELOPE
ENVISAGED BY THE
MASTER PLAN 2030
(2018 REVIEW):
30% APARTMENTS A
52% APARTMENTS B
41% TOTAL

OVERSHADOWING:
17% APARTMENTS A
22% APARTMENTS B
20% TOTAL



23 SEPT 12:00pm

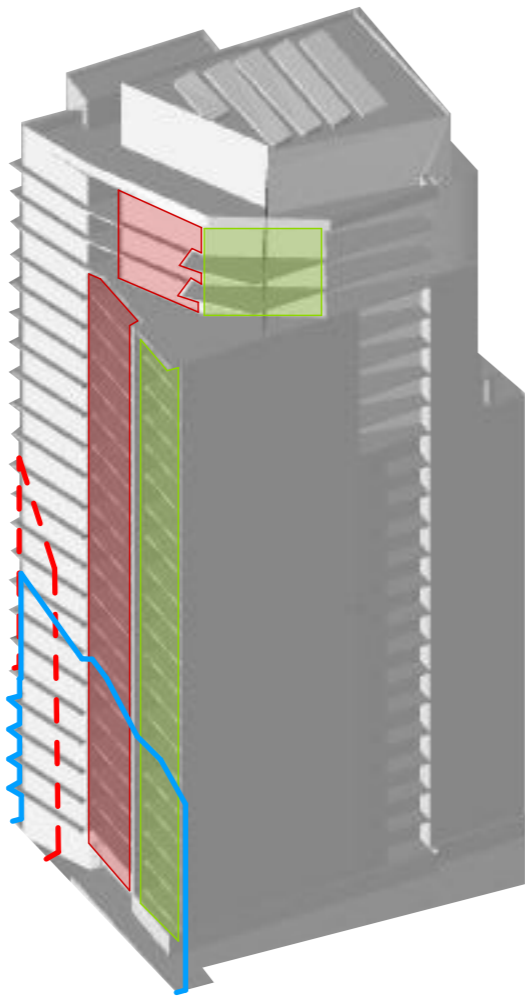
- SHADOW OF BUILDING
ENVELOPE ENVISAGED
BY THE MASTER PLAN 2030
(2018 REVIEW)
- SHADOW
- APARTMENTS A
- APARTMENTS B

OVERSHADOWING FROM
BUILDING ENVELOPE
ENVISAGED BY THE
MASTER PLAN 2030
(2018 REVIEW):

0% APARTMENTS A
0% APARTMENTS B
0% TOTAL

OVERSHADOWING:

26% APARTMENTS A
28% APARTMENTS B
27% TOTAL



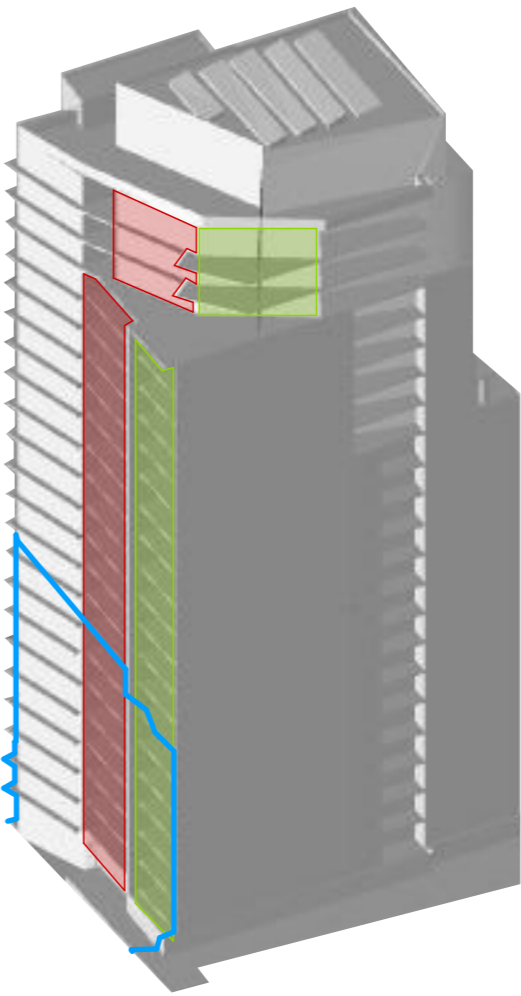
23 SEPT 1:00pm

OVERSHADOWING FROM
BUILDING ENVELOPE
ENVISAGED BY THE
MASTER PLAN 2030
(2018 REVIEW):

0% APARTMENTS A
0% APARTMENTS B
0% TOTAL

OVERSHADOWING:

30% APARTMENTS A
35% APARTMENTS B
33% TOTAL

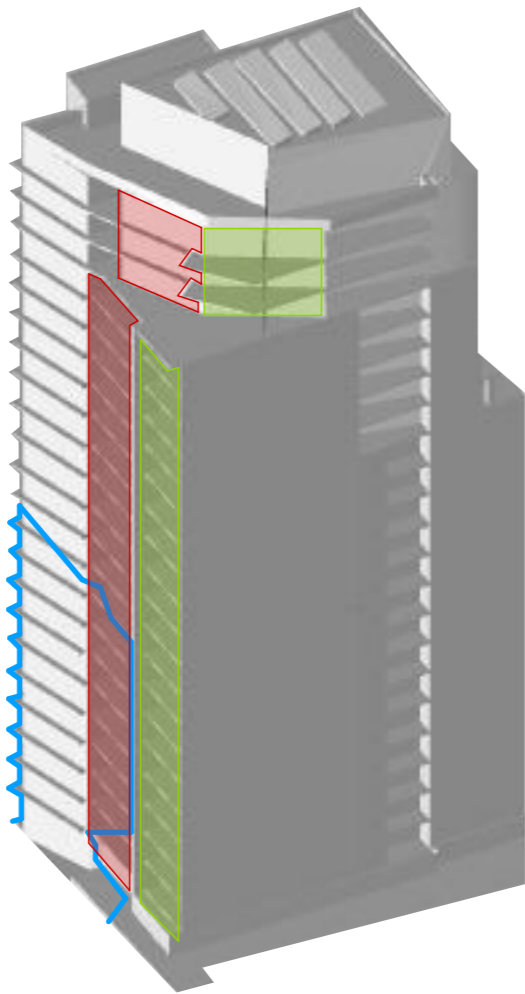


23 SEPT 2:00pm

- SHADOW OF BUILDING
ENVELOPE ENVISAGED
BY THE MASTER PLAN 2030
(2018 REVIEW)
- SHADOW
- APARTMENTS A
- APARTMENTS B

OVERSHADOWING FROM
BUILDING ENVELOPE
ENVISAGED BY THE
MASTER PLAN 2030
(2018 REVIEW):
0% APARTMENTS A
0% APARTMENTS B
0% TOTAL

OVERSHADOWING:
0% APARTMENTS A
35% APARTMENTS B
18% TOTAL



23 SEPT 3:00pm

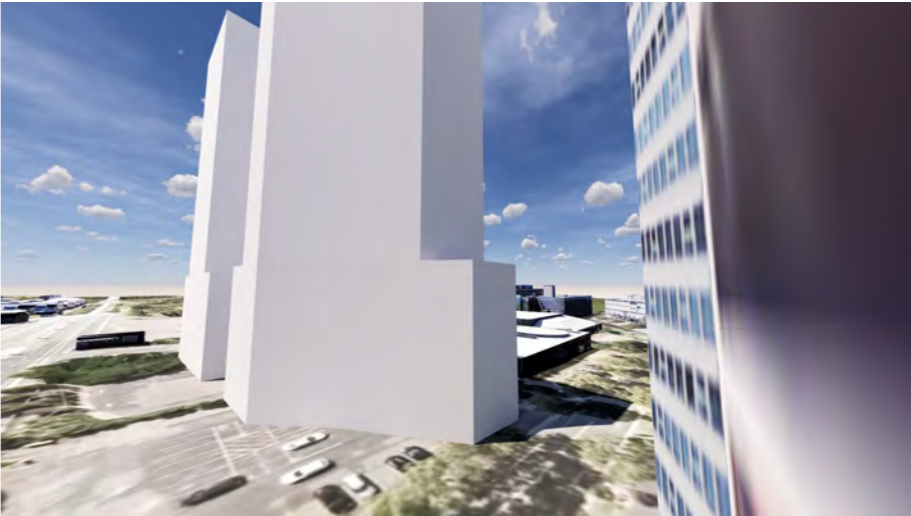
- SHADOW OF BUILDING
ENVELOPE ENVISAGED
BY THE MASTER PLAN 2030
(2018 REVIEW)
- SHADOW
- APARTMENTS A
- APARTMENTS B



Apartment A (West)_L05_VIEW 1_MASTER PLAN 2030 (2018 REVIEW)



Apartment A (West)_L05_VIEW 2_MASTER PLAN 2030 (2018 REVIEW)



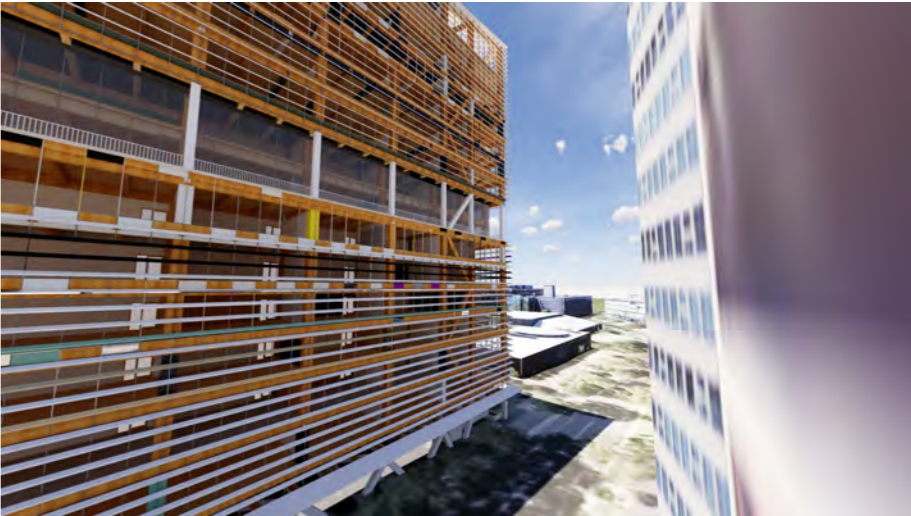
Apartment A (West)_L05_VIEW 3_MASTER PLAN 2030 (2018 REVIEW)



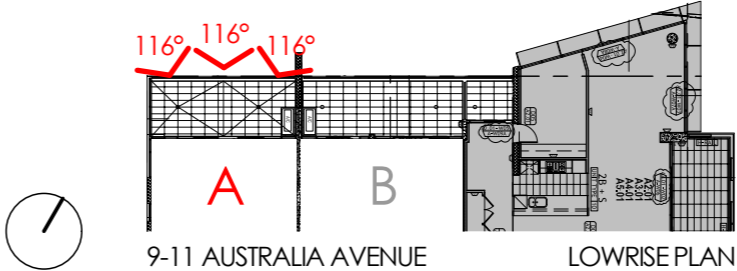
Apartment A (West)_L05_VIEW 1



Apartment A (West)_L05_VIEW 2



Apartment A (West)_L05_VIEW 3

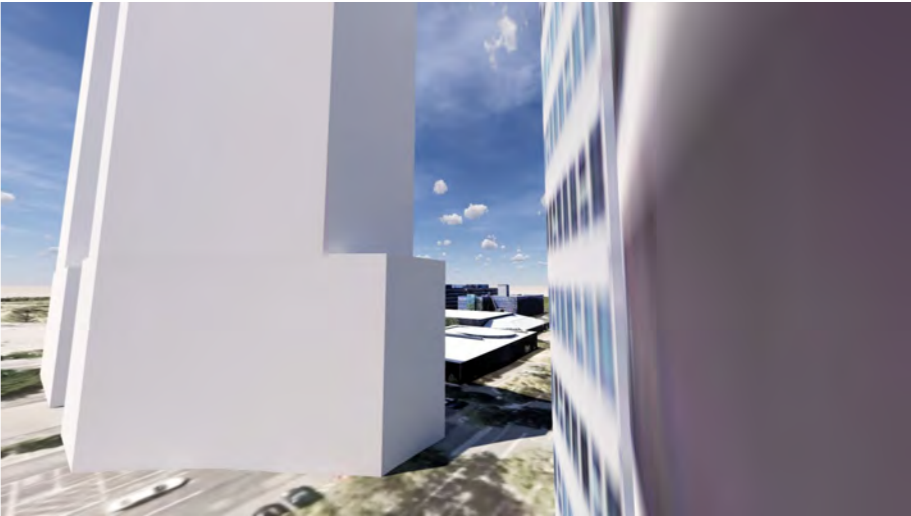




Apartment B (Mid)_L05_VIEW 1_MASTER PLAN 2030 (2018 REVIEW)



Apartment B (Mid)_L05_VIEW 2_MASTER PLAN 2030 (2018 REVIEW)



Apartment B (Mid)_L05_VIEW 3_MASTER PLAN 2030 (2018 REVIEW)



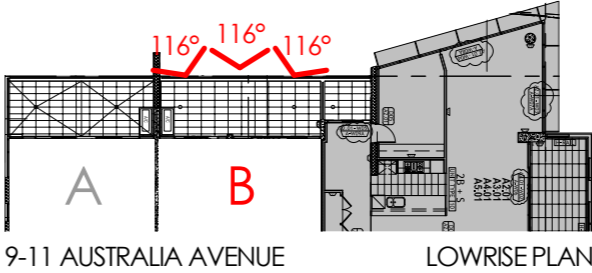
Apartment B (Mid)_L05_VIEW 1



Apartment B (Mid)_L05_VIEW 2



Apartment B (Mid)_L05_VIEW 3

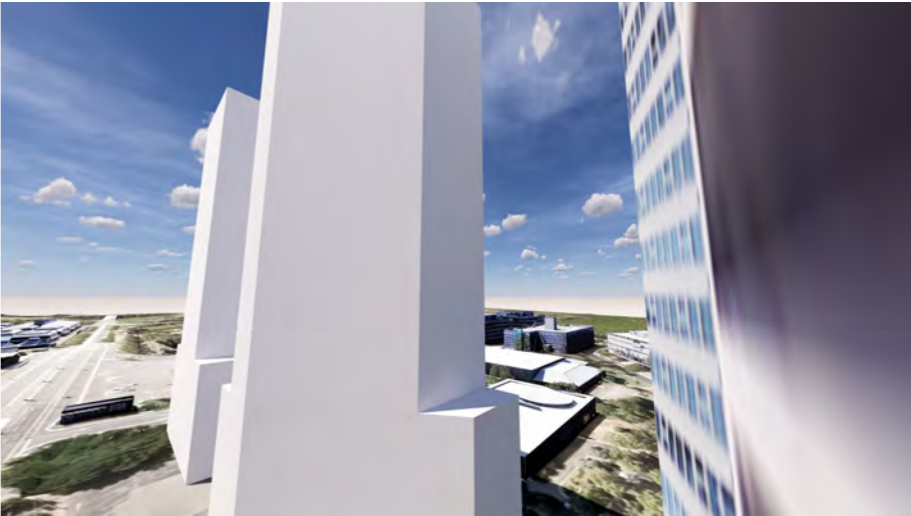




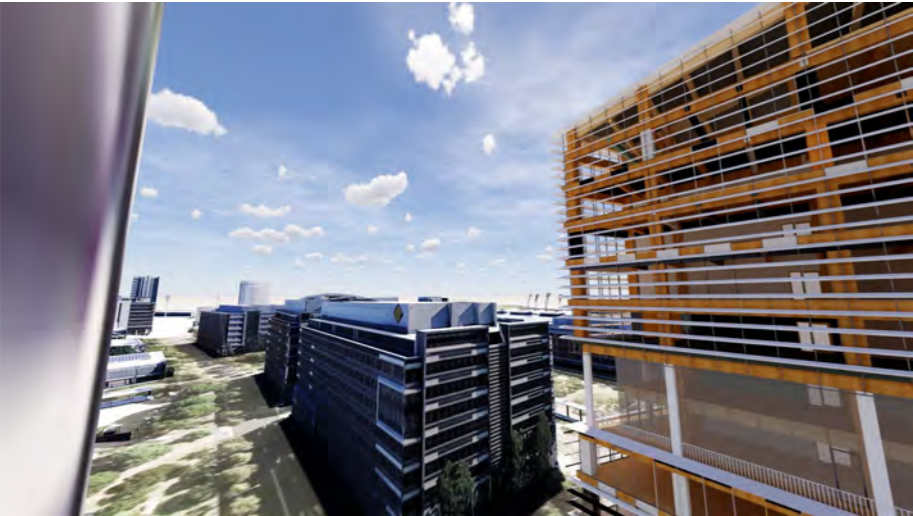
Apartment A (West)_L11_VIEW 1_MASTER PLAN 2030 (2018 REVIEW)



Apartment A (West)_L11_VIEW 2_MASTER PLAN 2030 (2018 REVIEW)



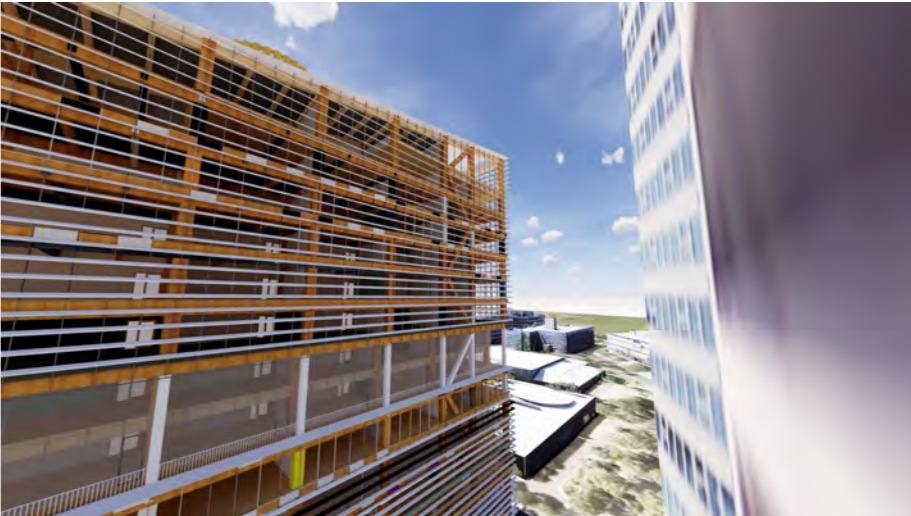
Apartment A (West)_L11_VIEW 3_MASTER PLAN 2030 (2018 REVIEW)



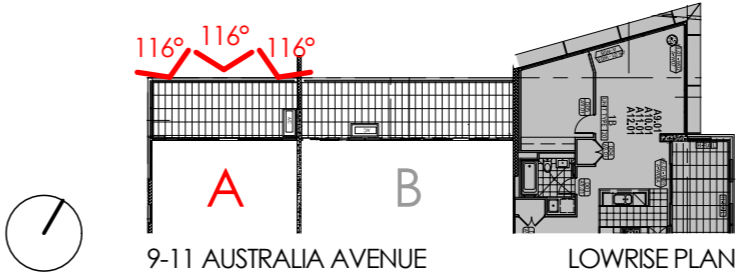
Apartment A (West)_L11_VIEW 1



Apartment A (West)_L11_VIEW 2



Apartment A (West)_L11_VIEW 3

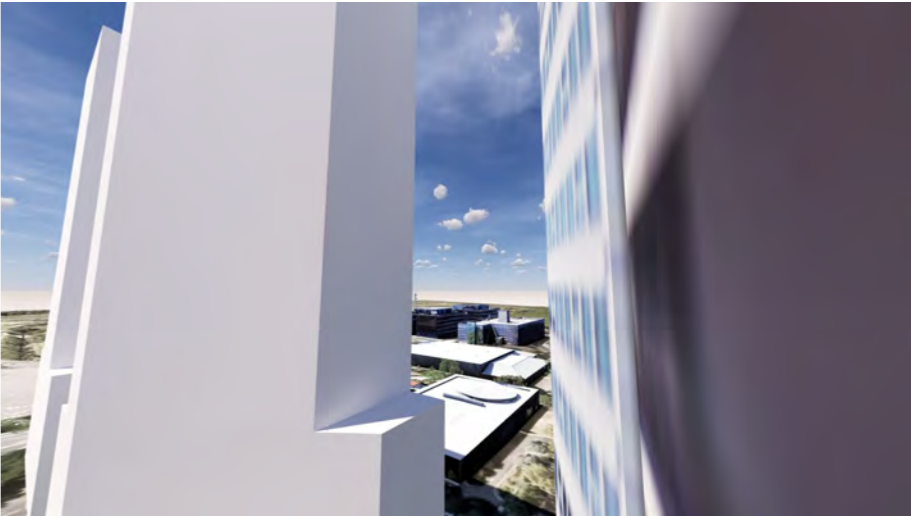




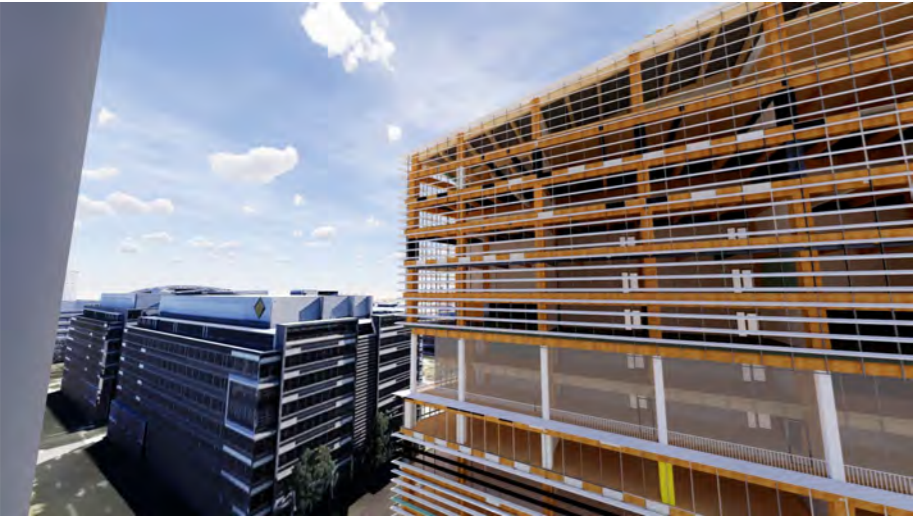
Apartment B (Mid)_L11_VIEW 1_MASTER PLAN 2030 (2018 REVIEW)



Apartment B (Mid)_L11_VIEW 2_MASTER PLAN 2030 (2018 REVIEW)



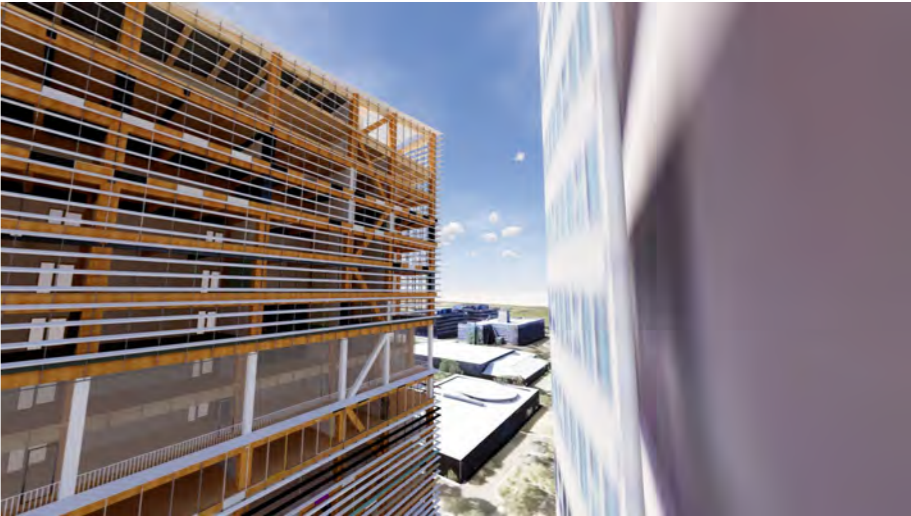
Apartment B (Mid)_L11_VIEW 3_MASTER PLAN 2030 (2018 REVIEW)



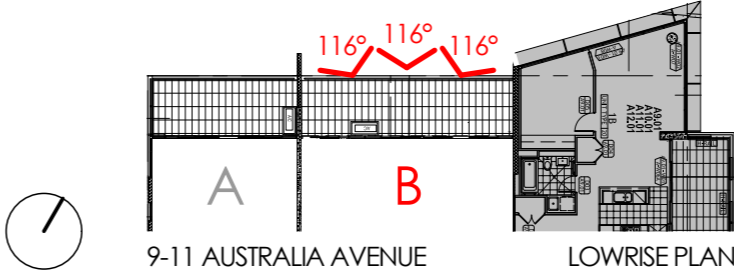
Apartment B (Mid)_L11_VIEW 1



Apartment B (Mid)_L11_VIEW 2



Apartment B (Mid)_L11_VIEW 3





Apartment A (West)_L17_VIEW 1_MASTER PLAN 2030 (2018 REVIEW)



Apartment A (West)_L17_VIEW 2_MASTER PLAN 2030 (2018 REVIEW)



Apartment A (West)_L17_VIEW 3_MASTER PLAN 2030 (2018 REVIEW)



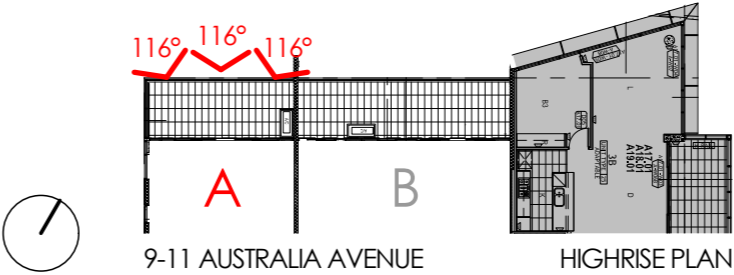
Apartment A (West)_L17_VIEW 1



Apartment A (West)_L17_VIEW 2



Apartment A (West)_L17_VIEW 3

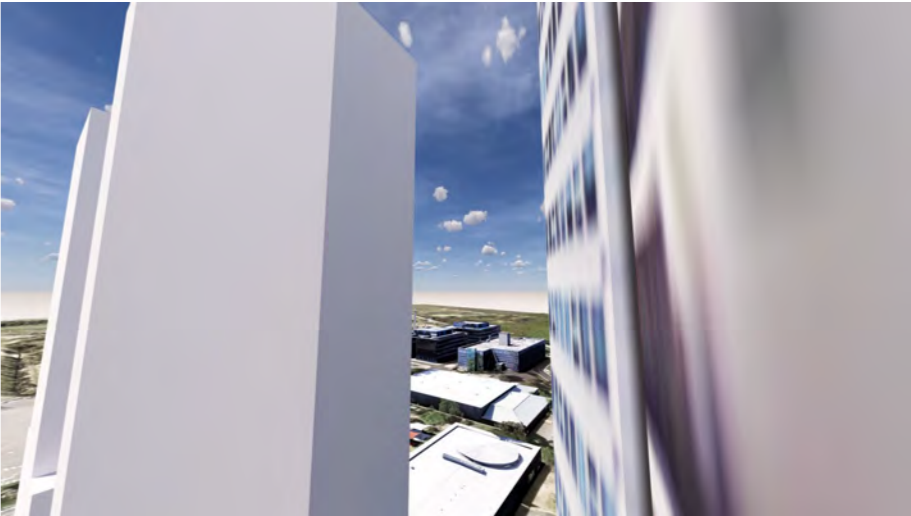




Apartment B (Mid)_L17_VIEW 1_MASTER PLAN 2030 (2018 REVIEW)



Apartment B (Mid)_L17_VIEW 2_MASTER PLAN 2030 (2018 REVIEW)



Apartment B (Mid)_L17_VIEW 3_MASTER PLAN 2030 (2018 REVIEW)



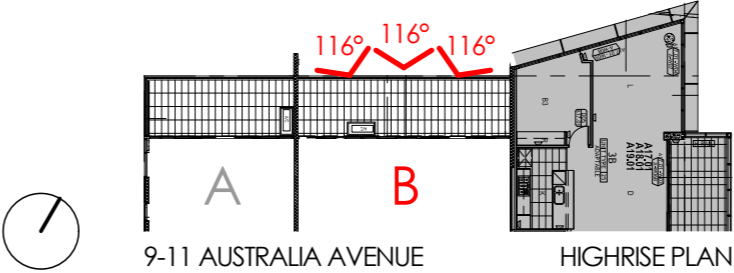
Apartment B (Mid)_L17_VIEW 1



Apartment B (Mid)_L17_VIEW 2

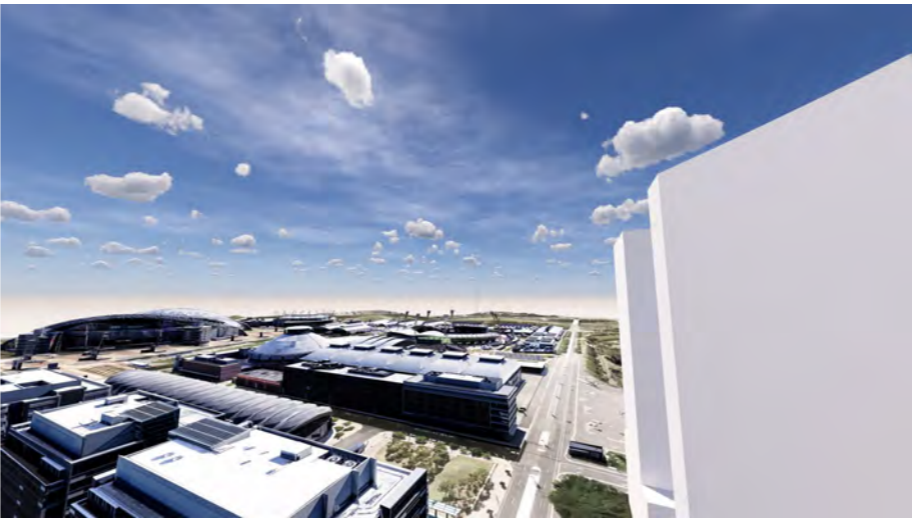


Apartment B (Mid)_L17_VIEW 3





Apartment A (West)_L23_VIEW 1_MASTER PLAN 2030 (2018 REVIEW)



Apartment A (West)_L23_VIEW 2_MASTER PLAN 2030 (2018 REVIEW)



Apartment A (West)_L23_VIEW 3_MASTER PLAN 2030 (2018 REVIEW)



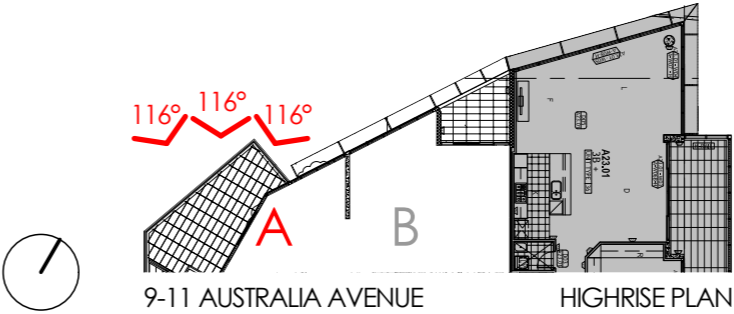
Apartment A (West)_L23_VIEW 1



Apartment A (West)_L23_VIEW 2



Apartment A (West)_L23_VIEW 3





Apartment B (Mid)_L23_VIEW 1_MASTER PLAN 2030 (2018 REVIEW)



Apartment B (Mid)_L23_VIEW 2_MASTER PLAN 2030 (2018 REVIEW)



Apartment B (Mid)_L23_VIEW 3_MASTER PLAN 2030 (2018 REVIEW)



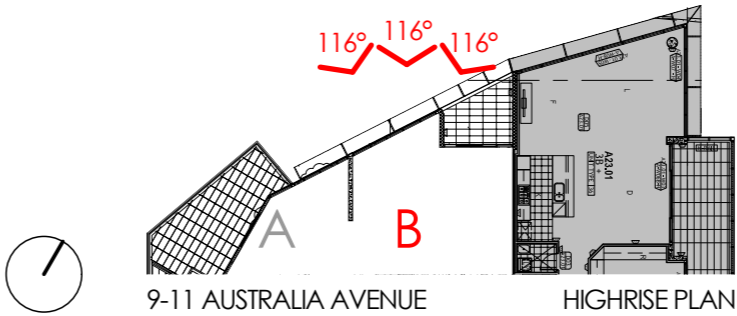
Apartment B (Mid)_L23_VIEW 1



Apartment B (Mid)_L23_VIEW 2



Apartment B (Mid)_L23_VIEW 3







North (Australia Ave)_MASTER PLAN 2030 (2018 REVIEW)



East (Dairy Farmers)_MASTER PLAN 2030 (2018 REVIEW)



North (Australia Ave)



East (Dairy Farmers)



South (Australia Ave)_MASTER PLAN 2030 (2018 REVIEW)



West (Olympic Park Station)_MASTER PLAN 2030 (2018 REVIEW)



South (Australia Ave)



West (Olympic Park Station)