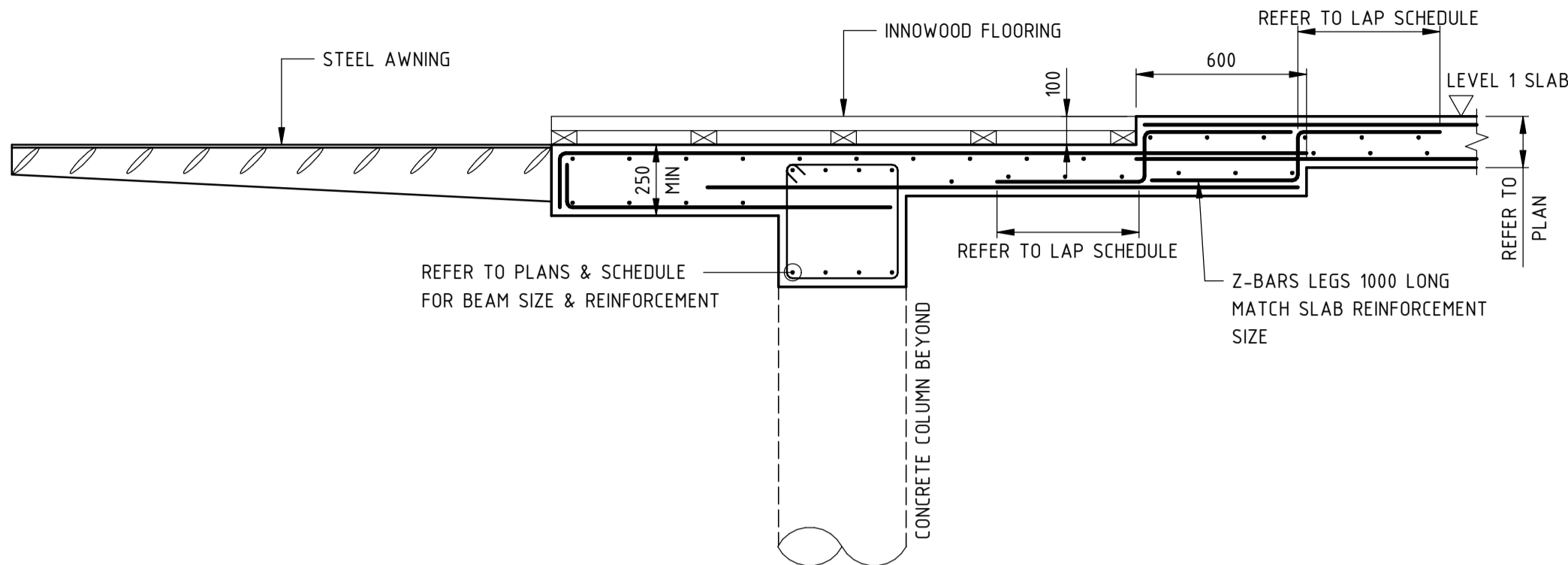


TYPICAL CONCRETE BEAM DETAIL
(ADJACENT TO MODULAR BUILDINGS)

SECTION 1
S112

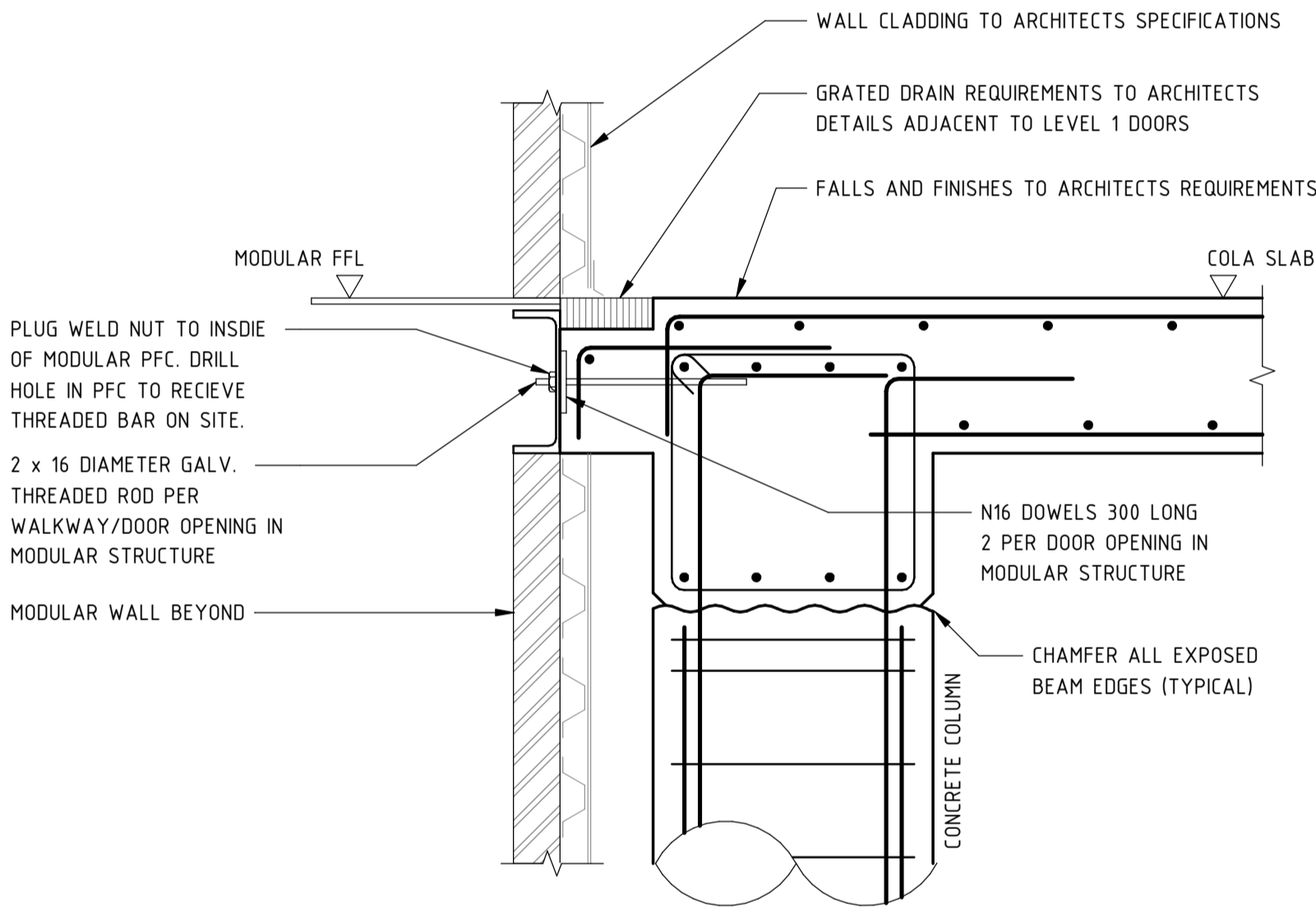
TYPICAL CONCRETE BEAM DETAIL
(AT BATHROOM/ TOILET LOCATIONS)

SECTION 2
S112

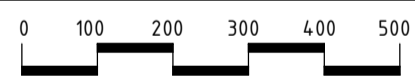


TYPICAL CONCRETE BEAM DETAIL
(AT INNOWOOD FLOORING LOCATIONS)

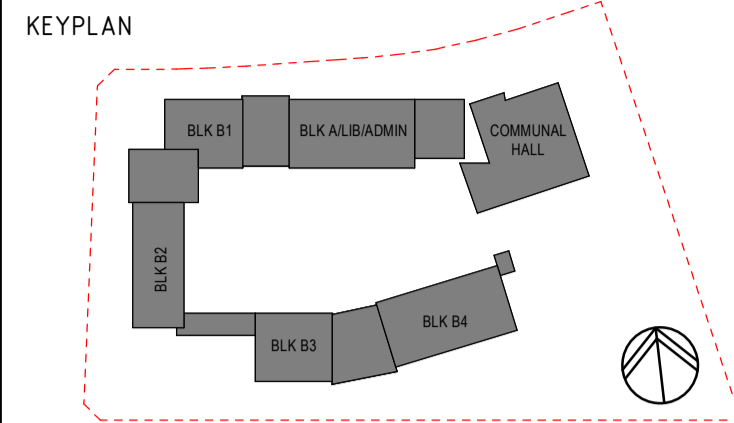
SECTION 3
S112



TYPICAL COLA DOWEL JOINT (DJ) TO MODULAR
AT DOOR WAYS & WALKWAYS DETAIL



DRAWINGS NOT TO BE USED FOR CONSTRUCTION UNLESS VERIFICATION SIGNATURE HAS BEEN ADDED. THE COPYRIGHT OF THIS DRAWING REMAINS WITH NORTHROP CONSULTING ENGINEERS PTY LTD. ALL SETOUT TO ARCHITECT'S DRAWINGS. DIMENSIONS TO BE VERIFIED WITH ARCHITECT AND BUILDER BEFORE COMMENCING. SHOP DRAWINGS OR SITE WORK, NORTHROP ACCEPTS NO RESPONSIBILITY FOR THE USABILITY, COMPLETENESS OR SCALE OF DRAWINGS TRANSFERRED ELECTRONICALLY.



REV	DESCRIPTION	ISS'D	VER'D	APP'D	DATE
A	PROGRESS ISSUE	L.M		R.D	05.07.19
B	FINAL COORDINATION ISSUE	L.M		R.D	12.07.19
C	ISSUED FOR CONSTRUCTION	L.M	P.O'H	R.D	17.07.19

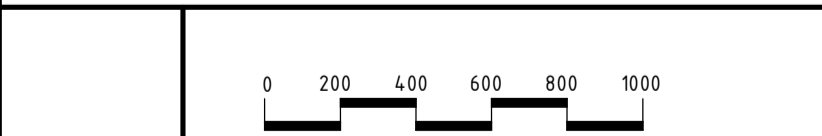
CLIENT
RICHARD CROOKES
CONSTRUCTIONS

ARCHITECT
GROUP GSA

NSW GOVERNMENT | **Education**

PROJECT
ALEX AVENUE PUBLIC SCHOOL

NORTHROP
Sydney
Level 11, 345 George Street, Sydney, N.S.W. 2000
Ph (02) 9241 4188 Email: sydney@northrop.com.au
ABN 81 094 433 100



DRAWING TITLE
**STRUCTURAL DRAWING
SUSPENDED SLAB
DETAILS - SHEET 2**

JOB NUMBER	DRAWING NUMBER	REVISION
S182535-01	S30.2	C
DRAWING SHEET SIZE = A1		

FOR CONSTRUCTION

VERIFIER: PHIL O'HARA

JOB MANAGER: RORY DALE

DESIGNED: BRENDAN BLAKE

DRAWN: LIAM MCKEOUGH