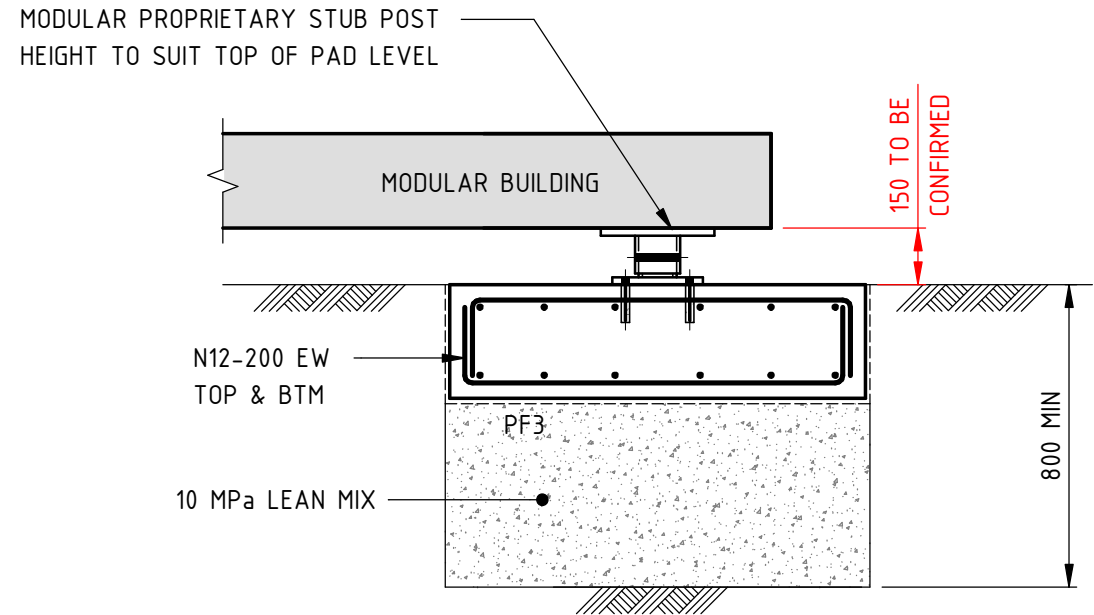


VERIFIER: PHIL O'HARA

JOB MANAGER: RORY DALE

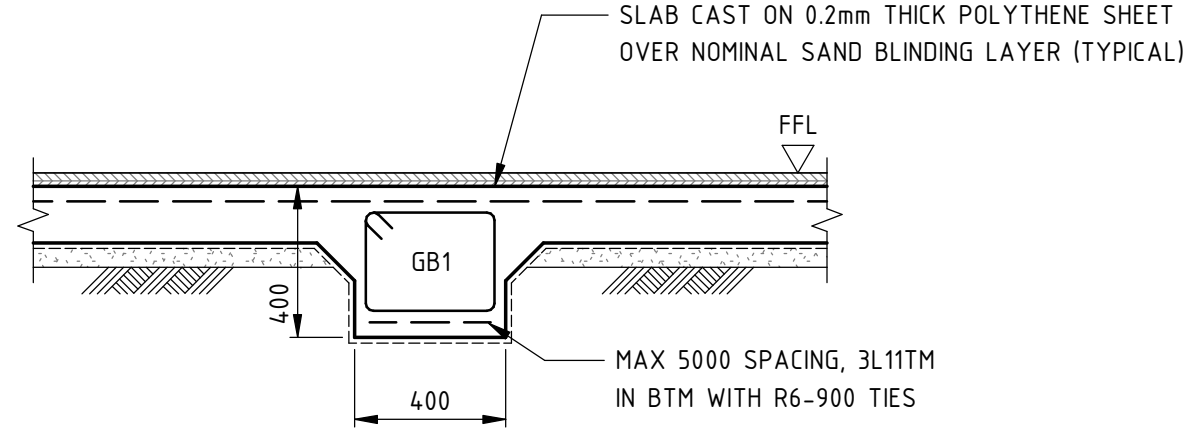
DESIGNED: BRENDAN BLAKE

DRAWN: LIAM MCKEOUGH

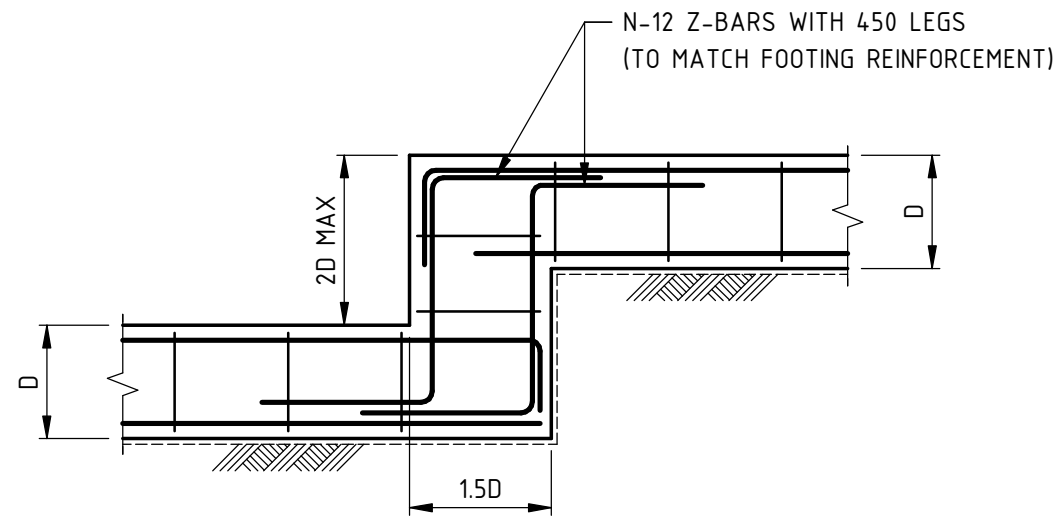


TYPICAL PAD FOOTING DETAIL

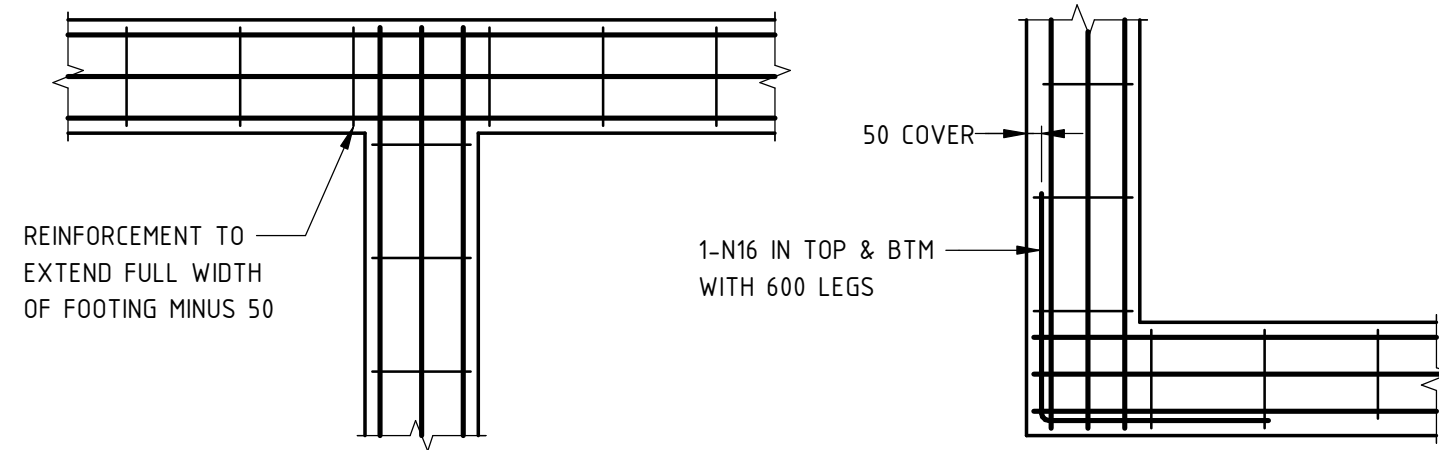
- GEOTECHNICAL ENGINEER TO CONFIRM ALLOWANCE BEARING CAPACITY OF 150 kPa ON STIFF RESIDUAL SILTY CLAY
- PROVIDE 10 MPa LEAN CONCRETE MIX BLINDING TO ACHIEVE REQUIRED BEARING CAPACITY
- FIXING BY OTHERS



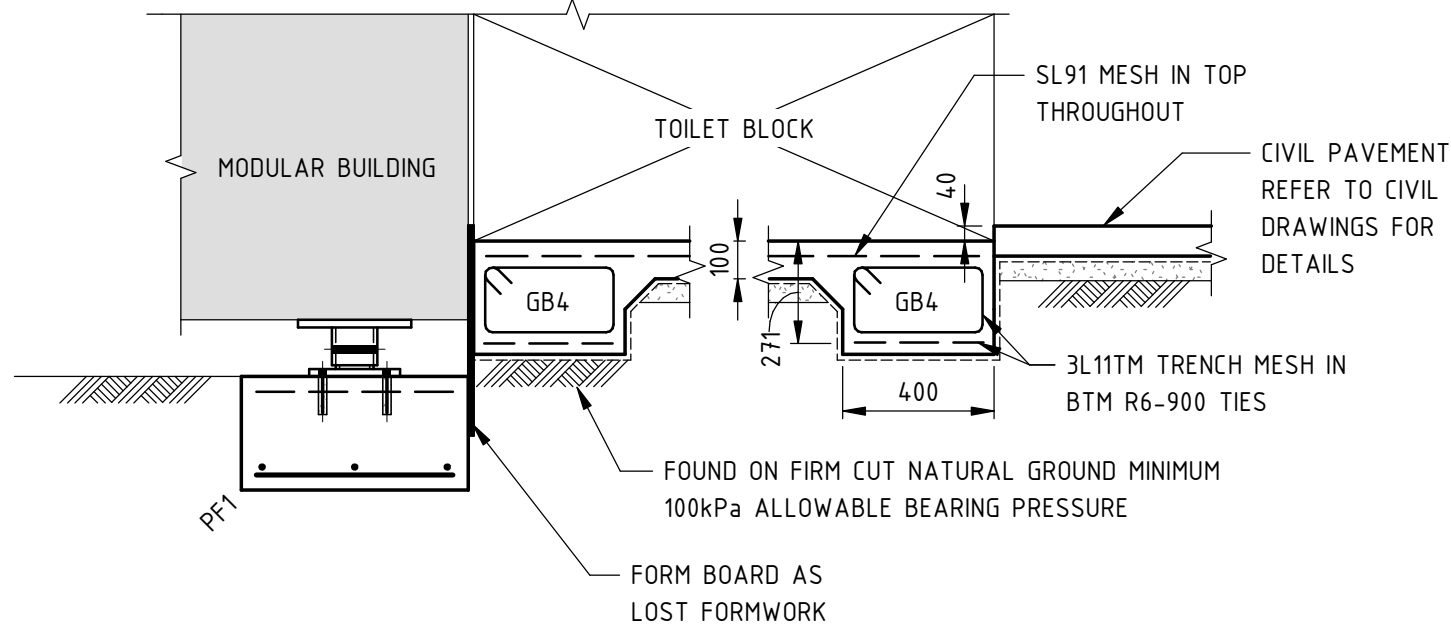
TYPICAL FOOTING BEAM DETAIL (GB1)



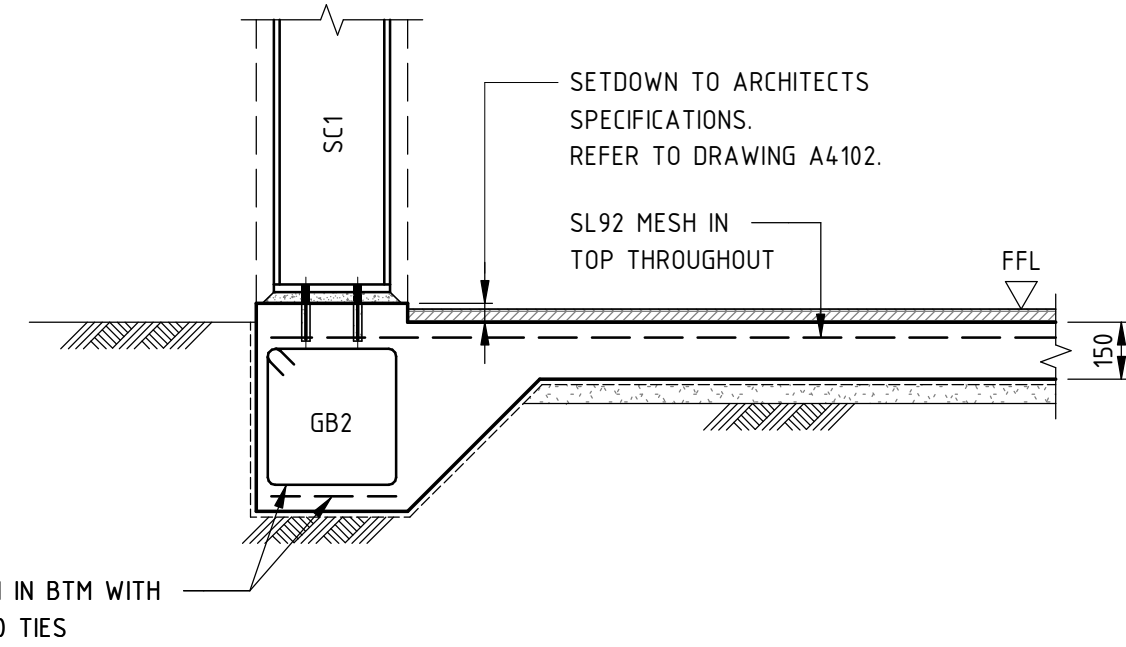
TYPICAL FOOTING STEP DETAIL



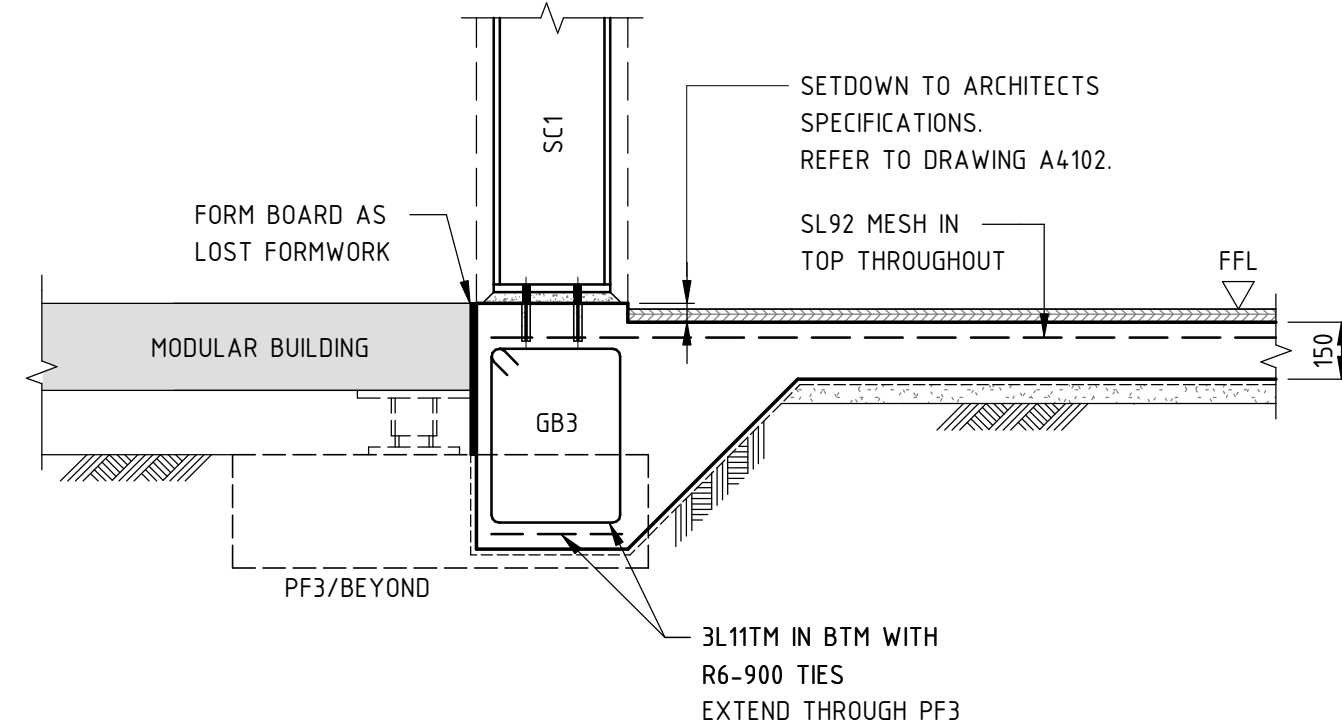
TYPICAL RIB BEAMS AT INTERSECTION
PLAN VIEW DETAILS



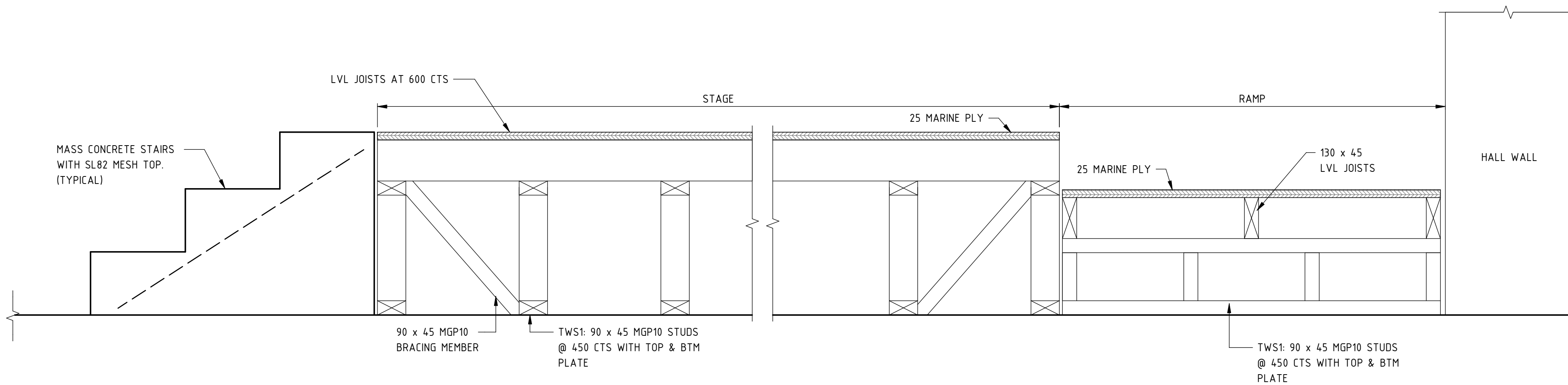
TYPICAL TOILET SLAB SECTION



SECTION 1
S10.1



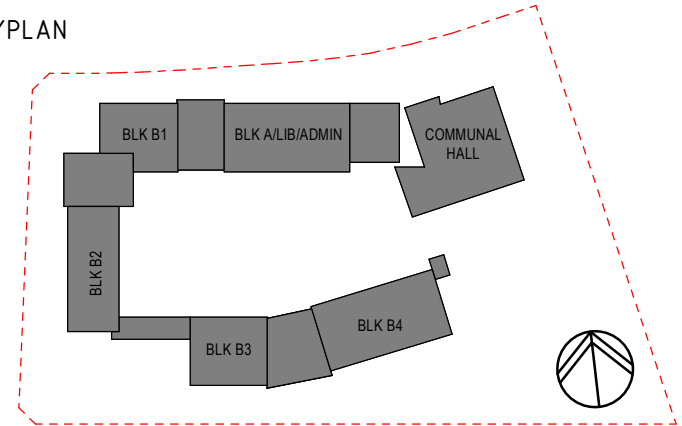
SECTION 2
S10.1



SECTION 3
S10.1

DRAWINGS NOT TO BE USED FOR CONSTRUCTION UNLESS VERIFICATION SIGNATURE HAS BEEN ADDED. THE COPYRIGHT OF THIS DRAWING REMAINS WITH NORTHROP CONSULTING ENGINEERS PTY LTD. ALL SETOUT TO ARCHITECT'S DRAWINGS. DIMENSIONS TO BE VERIFIED WITH ARCHITECT AND BUILDER BEFORE COMMENCING SHOP DRAWINGS OR SITE WORK. NORTHROP ACCEPTS NO RESPONSIBILITY FOR THE USABILITY, COMPLETENESS OR SCALE OF DRAWINGS TRANSFERRED ELECTRONICALLY.

KEYPLAN



REV	DESCRIPTION	ISS'D	VER'D	APP'D	DATE
1	ISSUED FOR INFORMATION	L.M.		R.D.	18.04.19
A	ISSUED FOR CONSTRUCTION	L.M.	P.O'H	R.D.	17.05.19
B	REVISED FOR DDR SUBMISSION	L.M.	P.O'H	R.D.	21.06.19
C	PROGRESS ISSUE	L.M.	P.O'H	R.D.	05.07.19
D	FINAL COORDINATION ISSUE	L.M.	P.O'H	R.D.	12.07.19
E	REVISED FOR CONSTRUCTION	L.M.	P.O'H	R.D.	17.07.19

CLIENT

RICHARD CROOKES
CONSTRUCTIONS

ARCHITECT

GROUP GSA



Education

PROJECT

ALEX AVENUE PUBLIC SCHOOL

NORTHROP

Sydney

Level 11, 345 George Street, Sydney, N.S.W. 2000
Ph (02) 9241 4188 Email: sydney@northrop.com.au
ABN 81 094 433 100

0 200 400 600 800 1000

DRAWING TITLE

**STRUCTURAL DRAWING
FOUNDATION &
GROUND FLOOR SLAB
DETAILS - SHEET 1**

JOB NUMBER

S182535-01

DRAWING NUMBER

S20.1

REVISION

E

DRAWING SHEET SIZE = A1

FOR CONSTRUCTION