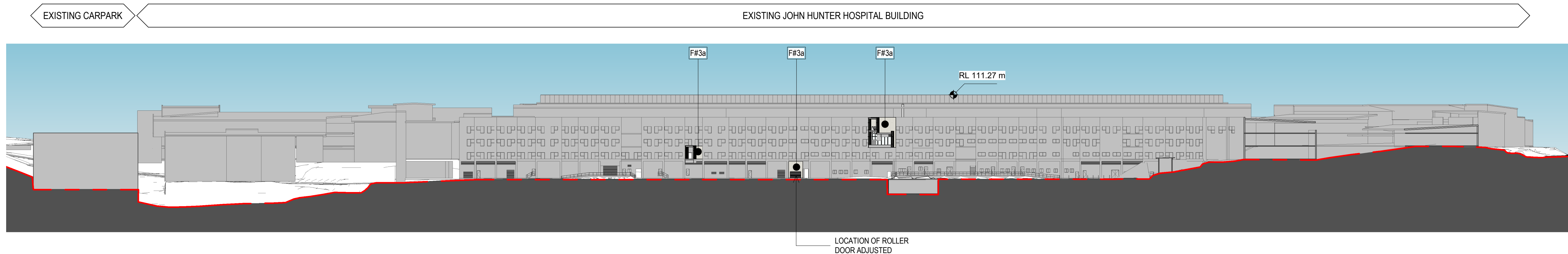
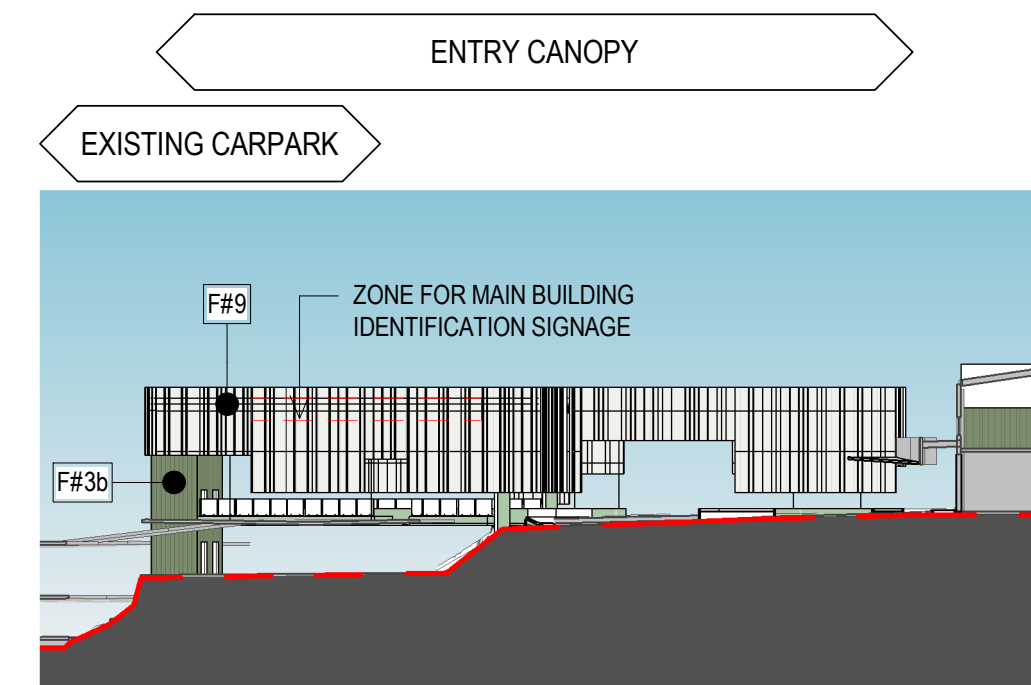


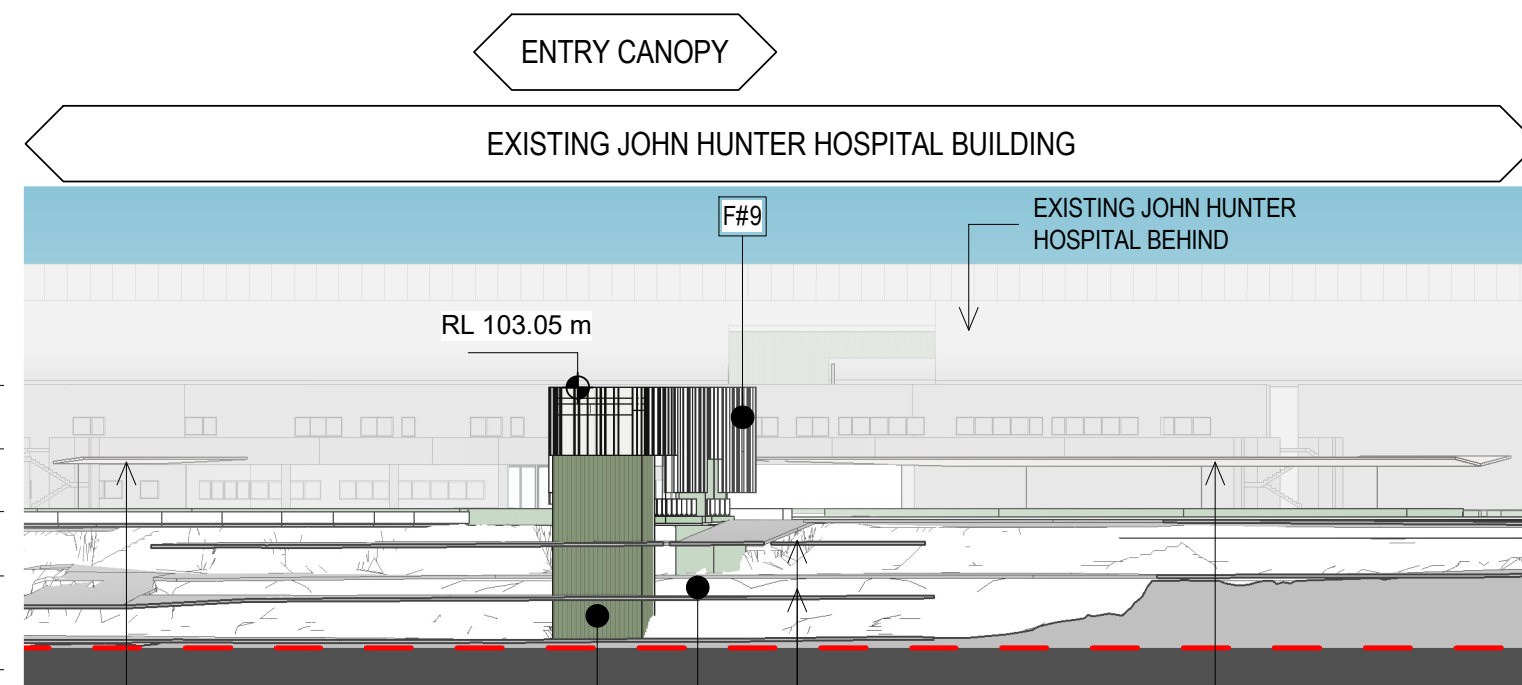
1 JOHN HUNTER HOSPITAL SOUTH ELEVATION
C0-B10 L0-00 1: 750



2 JOHN HUNTER HOSPITAL NORTH ELEVATION
C0-B10 B1-00 1: 750



3 JOHN HUNTER HOSPITAL CANOPY EAST ELEVATION
C0-B10 L0-00 1: 500



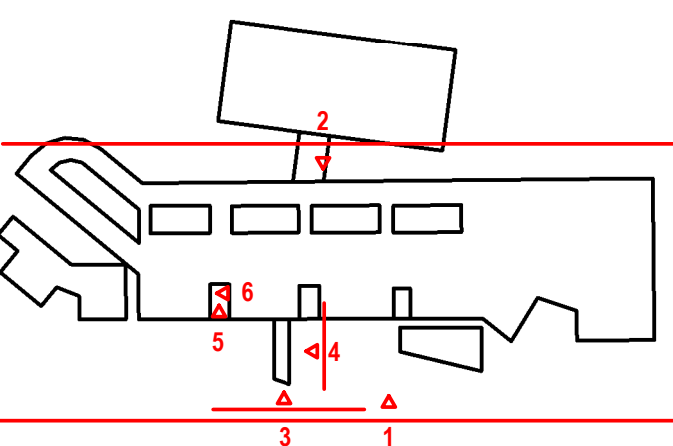
4 JOHN HUNTER HOSPITAL CANOPY NORTH ELEVATION
C0-B10 L0-00 1: 500

5 JOHN HUNTER HOSPITAL COURTYARD NORTH ELEVATION
C0-B10 L2-00 1: 500

CODE	DESCRIPTION
B#2	Glazed Balustrade
F#1a	StoAramat Render
F#1b	Feature Finish
F#2a	High performance glazing - low-e coated clear vision glass - expressed mullions - anodised aluminium
F#2b	Aluminium spandrels - expressed mullions - anodised aluminium
F#3a	Metal A Standing Seam cladding - module to suit building grid
F#3b	CFC Cladding - Panelised system cfc system with stained mineralised paint system - Expressed joints filled with sealant
F#3c	Metal B Flat panel cladding - expressed joints - module to suit building grid

6 JOHN HUNTER HOSPITAL COURTYARD WEST ELEVATION
C0-B10 L1-00 1: 500

CODE	DESCRIPTION
F#4	Metal D Standing Seam cladding
F#5	Carpark Façade A - flexible SS bridge safety mesh for ventilation
F#6	Carpark Façade B - Precast concrete
F#7	CFC Cladding - Panelised system cfc system with stained mineralised paint system - Expressed joints filled with sealant
F#8	Glass
F#9	Folded perforated aluminium panels of varies width - Translucent glazed panels with varied widths
F#10	Integral colour insitu concrete - class 2 off form concrete - Integral pigment for full depth of colour
F#11	Insitu Concrete - Stained Finish



ISSUE	DATE	FOR
1	22-02-2021	ENG. BACKGROUNDS
2	09-03-2021	FOR INFORMATION
3	16-03-2021	FOR INFORMATION
4	01-04-2021	SSDA
5	14-05-2021	FINAL FOR SSDA

PROJECT MANAGER
APP Corporation Pty Ltd
TEL: 02 9957 6211

ARCHITECT
BYN
TEL: 02 8297 7200

STRUCTURAL & CIVIL CONSULTANT
NORTHROP ENGINEERS
TEL: 02 4943 1777

ELECTRICAL & MECHANICAL CONSULTANT
STEESAN VARIMING PTY LTD
TEL: 02 9967 2200

HYDRAULIC & WET FIRE CONSULTANT
WARREN SMITH & PARTNERS
TEL: 02 9299 1312

LANDSCAPE CONSULTANT
URBIS LANDSCAPE
TEL: 02 8233 9900

CLIENT



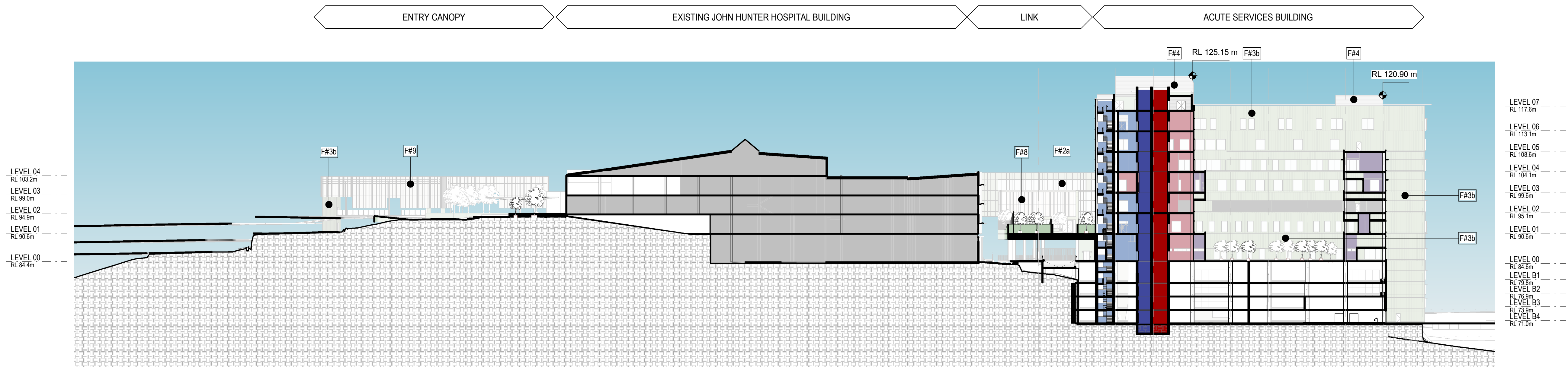
PROJECT

JOHN HUNTER HEALTH &
INNOVATION PRECINCT
Lookout Rd, New Lambton Heights
NSW 2305

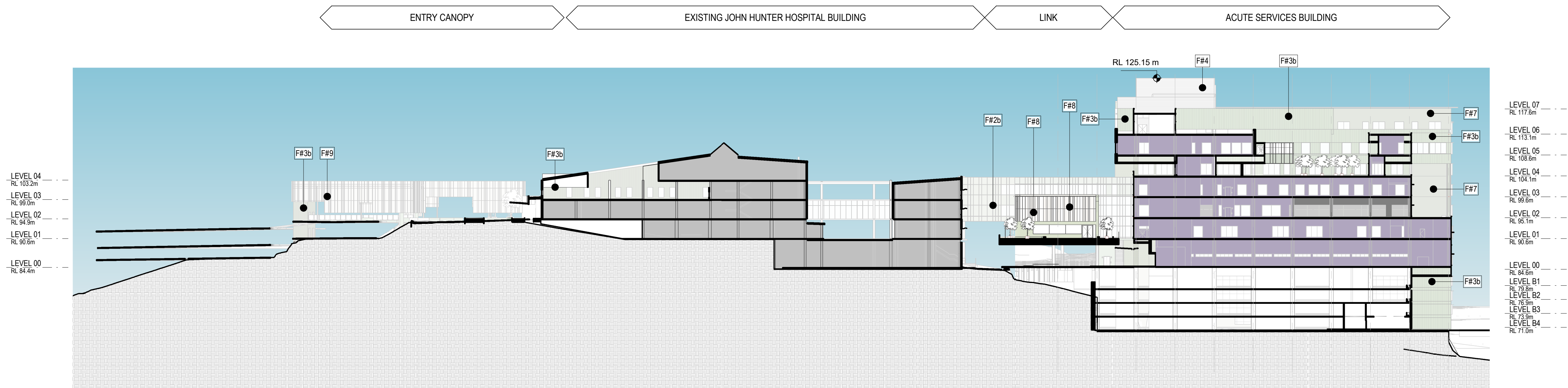
BVN PROJECT NUMBER

1904010

DRAWING KEY










6 SECTION SSDA 1A



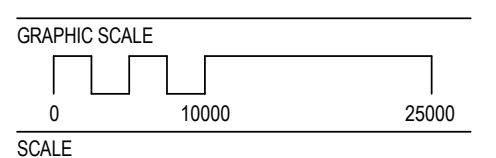
3 SECTION SSDA 2A

KEY

	PUBLIC CIRCULATION
	PUBLIC LIFTS
	BOH CIRCULATION
	BOH LIFTS
	DEPARTMENT
	PLANT
	NEW RETAIL

CODE	DESCRIPTION
B#2	Glazed Balustrade
F#1a	StoAramat Render
F#1b	Feature Finish
F#2a	High performance glazing - low-e coated clear vision glass - expressed mullions - anodised aluminium
F#2b	Aluminium spandrels - expressed mullions - anodised aluminium
F#3a	Metal A Standing Seam cladding - module to suit building grid
F#3b	CFC Cladding - P-Panelised system cfc system with stained mineralised paint system - Expressed joints filled with sealant
F#3b	Metal B Flat panel cladding - expressed joints - module to suit building grid

CODE	DESCRIPTION
F#4	Metal D -Standing Seam cladding
F#5	Carpark Façade A -flexible SS bridge safety mesh for ventilation
F#6	Carpark Façade B - Precast concrete
F#7	CFC Cladding - Panelised system cfc system with stained mineralised paint system - Expressed joints filled with sealant
F#8	Glass
F#9	Folded perforated aluminium panels of varies width - Translucent glass panels with varied widths
F#10	Integral colour insitu concrete - class 2 off form concrete - integral pigment for full depth of colour
F#11	Insitu Concrete -Stained Finish



As indicated@A1	1:1000 @ A3
STATUS	

DRAWING

SSDA

BUILDING SECTIONS	
	ISSUE
AR_ C0-D10 XX-X0	5



NSW ARCHITECTS REGISTRATION BOARD /
NOMINATED ARCHITECTS

6501 ABBIE GALVIN
5558 ANATOLSKA TICHOMSKY
7115 JULIAN ASHTON
7553 MATTHEW BLAIR
7151 PHILIP ROSSINGTON
4937 JAMES GROSE

Telephone +61 2 8297 7200
Facsimile +61 2 8297 7299
www.bvn.com.au

INTELLECTUAL PROPERTY
COPYRIGHT BVN ARCHITECTURE PTY LIMITED. UNLESS OTHERWISE
AGREED IN WRITING ALL RIGHTS TO THIS DOCUMENT ARE SUBJECT TO
PAYMENT IN FULL OF ALL BVN CHARGES. THIS DOCUMENT MAY ONLY
BE USED FOR THE EXPRESS PURPOSE AND PROJECT FOR WHICH IT
HAS BEEN CREATED AND DELIVERED. AS NOTIFIED IN WRITING BY
BVN AND THIS DOCUMENT MAY NOT BE, OTHERWISE USED, OR COPIED
ANY UNAUTHORISED USE OF THIS DOCUMENT IS AT THE USER'S SOLE
RISK AND WITHOUT LIMITING BVN'S RIGHTS TO THE USER RELEASES AND
INDEMNIFIES BVN FROM AND AGAINST ALL LOSS SO ARISING.

NOTE
CONTRACTOR TO CHECK AND VERIFY ALL DIMENSIONS ON SITE PRIOR
TO COMMENCEMENT OF WORK OR PREPARATION OF SHOP DRAWINGS.
DO NOT SCALE THIS DRAWING.

ISSUE	DATE	FOR
1	22-02-2021	ENG. BACKGROUNDS
2	09-03-2021	FOR INFORMATION
3	16-03-2021	FOR INFORMATION
4	01-04-2021	SSDA
5	14-05-2021	FINAL FOR SSDA

PROJECT MANAGER
APP Corporation Pty Ltd
TEL: 02 9957 6211

ARCHITECT
BVN
TEL: 02 8297 7200

STRUCTURAL & CIVIL CONSULTANT
NORTHROP ENGINEERS
TEL: 02 4943 1777

ELECTRICAL & MECHANICAL CONSULTANT
STEESEN VARMING PTY LTD
TEL: 02 9967 2200

HYDRAULIC & WET FIRE CONSULTANT
WARREN SMITH & PARTNERS
TEL: 02 9299 1312

LANDSCAPE CONSULTANT
URBIS LANDSCAPE
TEL: 02 8233 9900

CLIENT



HEALTH INFRASTRUCTURE, NSW
CLIENT NUMBER

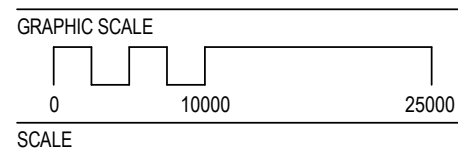
PROJECT

JOHN HUNTER HEALTH &
INNOVATION PRECINCT
Lookout Rd, New Lambton Heights
NSW 2305

BVN PROJECT NUMBER

1904010

DRAWING KEY



DRAWING

SSDA

BUILDING SECTIONS

AR_ C0-D10 XX-X1

ISSUE

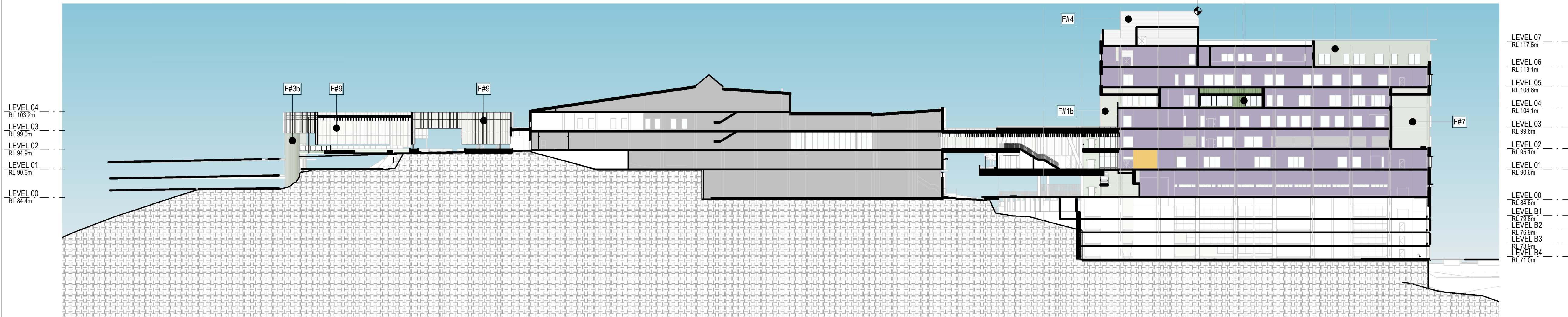
5

ENTRY CANOPY

EXISTING JOHN HUNTER HOSPITAL BUILDING

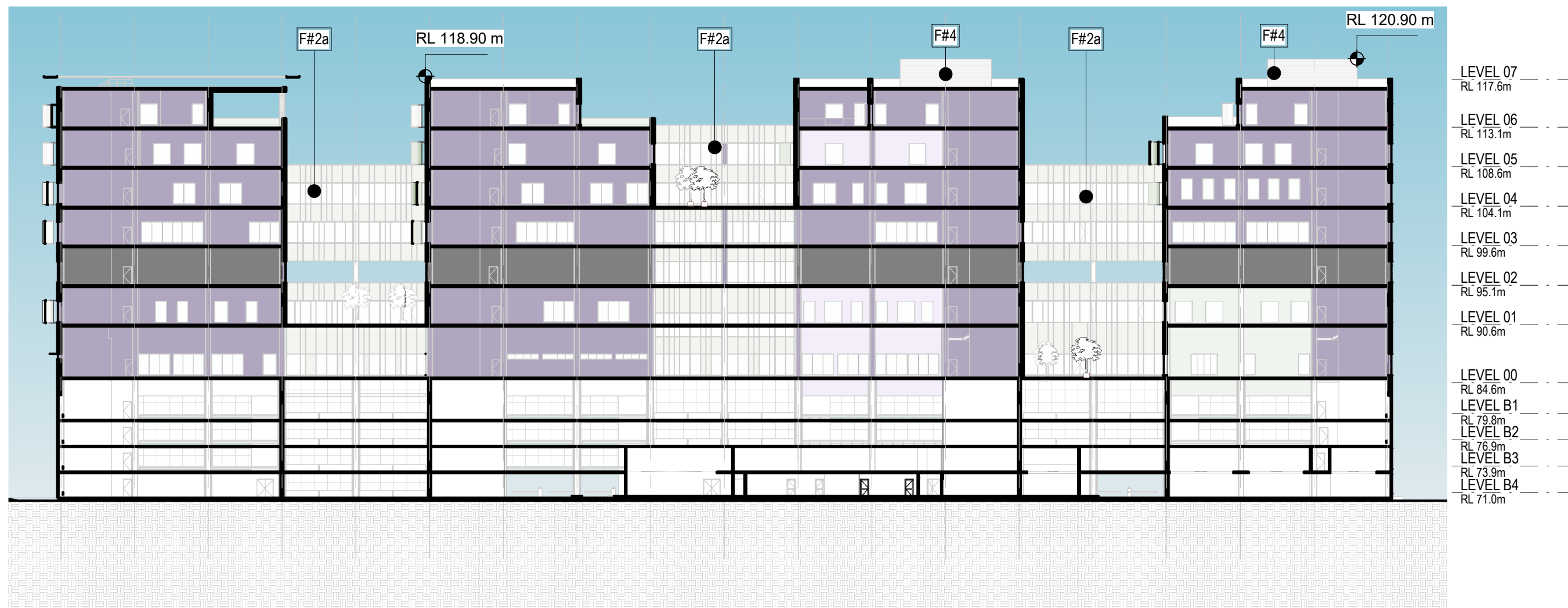
LINK

ACUTE SERVICES BUILDING



1 SECTION SSDA 3A
C0-B10
B1-00

ACUTE SERVICES BUILDING



3 SECTION SSDA 4
C0-B10
B1-00

KEY	
	PUBLIC CIRCULATION
	PUBLIC LIFTS
	BOH CIRCULATION
	BOH LIFTS
	DEPARTMENT
	PLANT
	NEW RETAIL

CODE	DESCRIPTION
B#2	Glazed Balustrade
F#1a	StoAramat Render
F#1b	Feature Finish
F#2a	High performance glazing - low-e coated clear vision glass - expressed mullions - anodised aluminium
F#2b	Aluminium spandrels - expressed mullions - anodised aluminium
F#3a	Metal A Standing Seam cladding - module to suit building grid
F#3b	CFC Cladding - Panelised system cfc system with stained mineralised paint system - Expressed joints filled with sealant
F#3c	Metal B Flat panel cladding - expressed joints - module to suit building grid

CODE	DESCRIPTION
F#4	Metal D -Standing Seam cladding
F#5	Carpark Façade A -flexible SS bridge safety mesh for ventilation
F#6	Carpark Façade B - Precast concrete
F#7	CFC Cladding - Panelised system cfc system with stained mineralised paint system - Expressed joints filled with sealant
F#8	Glass
F#9	Folded perforated aluminium panels of varies width - Translucent glazed panels with varied widths
F#10	Integral colour insitu concrete - class 2 off form concrete - integral pigment for full depth of colour
F#11	Insitu Concrete -Stained Finish

