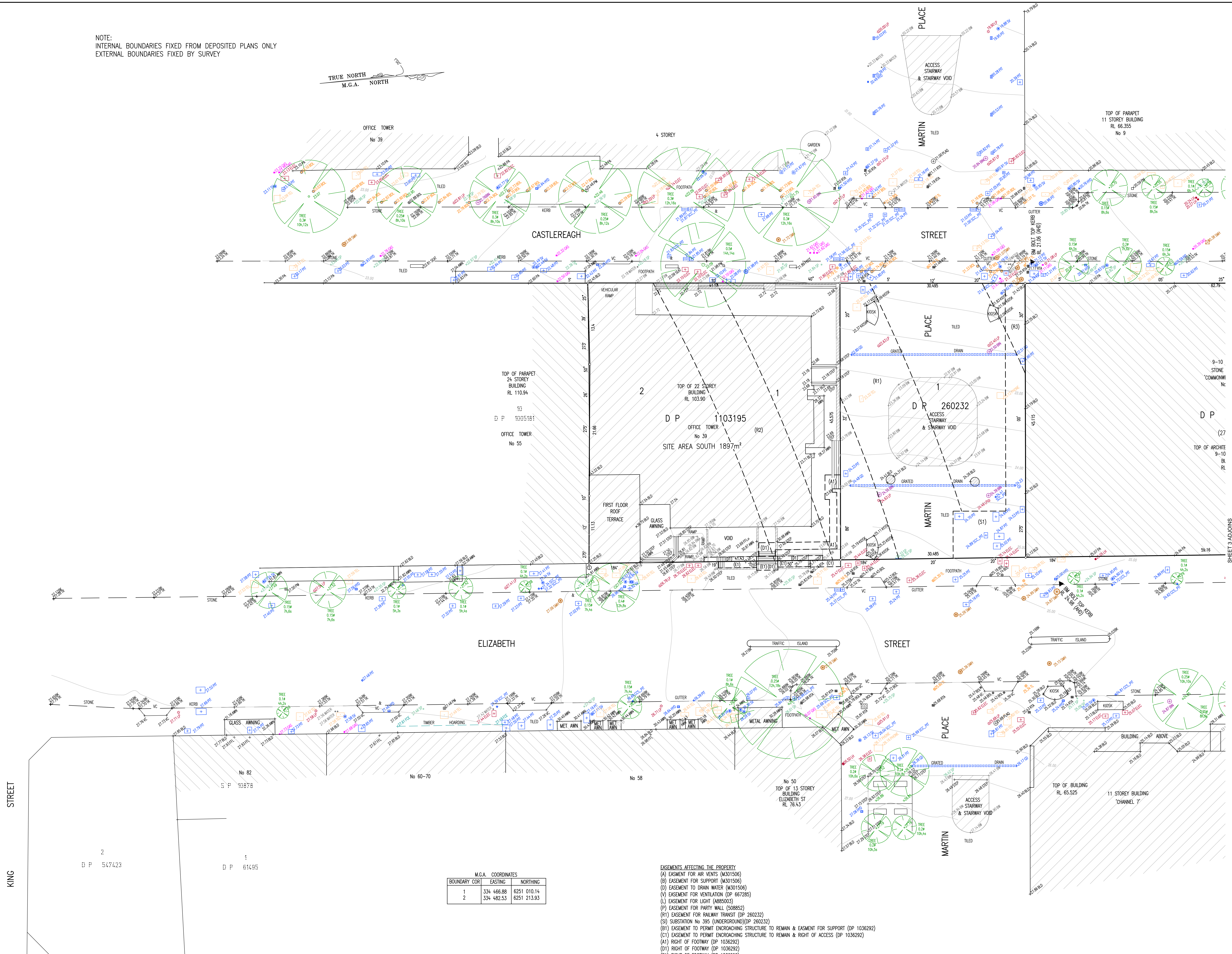


Survey Plan

CSWSMP-MAC-SMA-SU-DRG-000100

NOTE:
INTERNAL BOUNDARIES FIXED FROM DEPOSITED PLANS ONLY
EXTERNAL BOUNDARIES FIXED BY SURVEY



M.G.A. COORDINATES		
BOUNDARY COR	EASTING	NORTHING
1	334 466.88	6251 010.14
2	334 482.53	6251 213.93

EASEMENTS AFFECTING THE PROPERTY

- (A) EASEMENT FOR AIR VENTS (M301506)
- (B) EASEMENT FOR SUPPORT (M301506)
- (C) EASEMENT TO DRAIN WATER (M301506)
- (V) EASEMENT FOR VENTILATION (DP 667285)
- (L) EASEMENT FOR LIGHT (A885003)
- (P) EASEMENT FOR PARTY WALL (508852)
- (R1) EASEMENT FOR RAILWAY TRANSIT (DP 260232)
- (S) EASEMENT NO. 395 (UNDERGROUND) (DP 260232)

CR1) SUBSTANTION TO PERMIT ENCROACHING STRUCTURE TO REMAIN & EASEMENT FOR SUPPORT (DP 1036292)

(C1) EASEMENT TO PERMIT ENCROACHING STRUCTURE TO REMAIN & RIGHT OF ACCESS (DP 1036292)

- (A1) RIGHT OF FOOTWAY (DP 1036292)
- (L1) RIGHT OF FOOTWAY (DP 1036292)
- (C1) RIGHT OF FOOTWAY (DP 1036292)

- (R2) EASEMENT FOR RAILWAY PURPOSES (R822764)
- (R3) EASEMENT FOR RAILWAY PURPOSES (R822764)

CROSS EASEMENTS FOR SUPPORT 0.34 mile (DP 173027) & (DP 929277)

AUSGRID SUBSTATION & CONTROL POINT BASE TOGETHER WITH RIGHTS OF WAY & EASEMENTS FOR ELECTRICITY PURPOSES (53261255)

[illegible][illegible][illegible]

LEGEND OF TYPICAL SERVICES			
C	COMMUNICATIONS CABLE	RM	RECYCLED WATER
CSWP	CERAMIC STORMWATER PIPE	RM	RISING MAIN
EC	UNDERGROUND ELECTRICITY	RWS	ROADS & MARITIME SERVICES
EC-NO	UNDERGROUND ELECTRICITY & OPTICS CABLES	S	SEWER
FS	FEED SERVICE	SE	SEWER OUTFALL
GS	GAS LINE	SH	SHARDED TRENCH
GS	GAS LINE & ELECTRICITY CABLES	SM	STORM WATER
MBN	NATURAL BROAD BAND CABLES	SW-OK	STORMWATER CREEK
MBN	NATURAL GAS CABLE	T	TELESTRA & GAS CABLES
OH	OVERHEAD CABLES	U	UNKNOWN SERVICE
OP	OPTICS CABLE	VO	VEHICULAR CARS
PE	PRIVATE ELECTRICITY	WC	WINDY CHABLES
PS	PRIVATE SEWER	W	WATER SUPPLY
PS	PRIVATE WATER	WM	WATER MAIN

1. ALL UNDERGROUND SERVICE INFORMATION INCLUSIVE OF GENERAL POSITION AND SURFACE COVER DEPTHS NOTED ON THE PLAN ARE APPROXIMATELY ONLY.
2. ALL UNDERGROUND SERVICE INFORMATION HAS BEEN COMPILED FROM SERVICE AUTHORITY PLANS PROVIDED BY THE AUTHORITIES.
3. THE LOCATION OF SERVICES BETWEEN SURVEYED POINTS (AS INDICATED) HAVE BEEN SHOWN DIAGNOMATICALLY ONLY SINCE THE SERVICE DIAGRAMS AS PROVIDED, THE EXACT LOCATION OF THESE SERVICES BETWEEN THE SURVEYED POINTS MUST BE VERIFIED PRIOR TO THE EXCAVATION OF PILES; NO WARRANTY IS GIVEN AGAINST THE POSSIBILITY OF THE EXISTENCE OF FURTHER UNKNOWEN SERVICES.
4. ALL CONTRACTORS, TENDERSMEN, BUILDING & PROJECT CONSULTANTS MUST CONTACT THE VARIOUS AUTHORITIES, IN ACCORDANCE WITH STANDARD "B1, BEFORE YOU GO" PROCEDURES PRIOR TO UNDERTAKING ANY WORKS WITHIN THE MOUNTY OF THE SERVICE LINES TO VERIFY THE POSITION OF THE SERVICE LINES.

Liability limited by a scheme
approved under Professional
Standards Legislation

REDUCTION RATIO 1 : 200


2 4 6 8 10 12 14 16 18 20

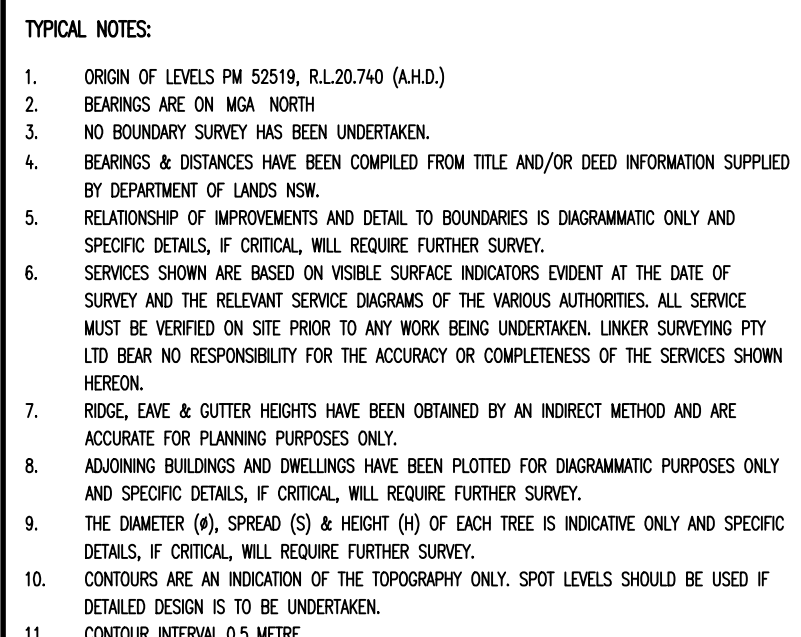
LENGTHS ARE IN METRES

CLIENT: MACQUARIE GROUP LTD

TITLE No: 1/182023 & 182/1103195	REF: 160915
DATUM: A.H.D.	ISSUE: 6
DATE OF SURVEY: 12.12.16	ISSUE DATE: 17.02.01
SURVEYOR: KB	SHEET SIZE: AO
DRAFTER: PH	SHEET 1 OF 3 SHEETS

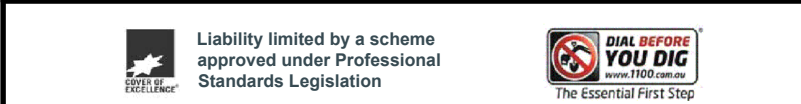
PLAN OF DETAIL & LEVELS AT
No 39 & 50 MARTIN PLACE &
No 1-19 ELIZABETH STREET
SYDNEY

 Suite 301, Level 3, 55 Holt Street
Surry Hills NSW 2012
PO Box 1807
Strawberry Hills NSW 2012
t: (02) 9212 4655
f: (02) 9212 5254
email: reception@linkersurveying.com.au
web site: www.linkersurveying.com.au

[illegible][illegible]

LEGEND OF TYPICAL SERVICES			
C	COMMUNICATIONS CABLE	RM	RECYCLED WATER
CSWP	GENERIC STORMWATER PIPE	RM	REING MAN
E	UNDERGROUND ELECTRICITY CABLES	RWS	ROADS & WORTHINE SERVICES
EE	UNDERGROUND ELECTRICITY & OPTIC CABLES	S	SEWER
FS	FREE SERVICE	SD	SEWER OUTFALL
G	GAS LINE	SH	SHARED DITCH
GE	GAS & ELECTRICITY CABLES	SM	STORM WATER
HM	NATURAL GAS AND CABLES	SW-OK	STORMWATER DRAIN
M	NATURAL GAS LINES	T	TESTING CABLES
OH	OVERHEAD CABLES	T&S	TESTING & GAS CABLES
OP	OPTIC CABLE	U	UNCOMMON SERVICE
PE	PRIVATE ELECTRICITY	VO	VOCUS CABLES
PI	PRIVATE SEWER	WC	WEDDING CABLES
PW	PRIVATE WATER	WM	WATER SUPPLY
		WM	WATER MAN

1. ALL UNDERGROUND SERVICE INFORMATION INCLUSIVE OF GENERAL POSITION AND SURFACE COVER DEPTHS NOTED ON THE PLAN ARE APPROXIMATELY ONLY.
2. ALL UNDERGROUND SERVICE INFORMATION HAS BEEN COMPILED FROM SERVICE AUTHORITY PLANS PROVIDED BY THE AUTHORITIES.
3. THE LOCATION OF SERVICES BETWEEN SURVEYED POINTS (AS INDICATED) HAVE BEEN SHOWN DIAGRAMMATICALLY ONLY USING THE SERVICE DIAGRAMS AS PROVIDED. THE EXACT LOCATION OF THESE SERVICES BETWEEN THE SURVEYED POINTS MUST BE VERIFIED PRIOR TO ANY EXCAVATION OR PILING. NO WARRANTY IS GIVEN AHEAD OF THE RISK OF THE COSTS OF FURTHER UNCOVERED SERVICES.
4. ALL CONTRACTORS, TRADESMAN, BUILDING A PROJECT CONSULTANTS MUST CONTACT THE VARIOUS AUTHORITIES, IN ACCORDANCE WITH STANDARD "DIAL BEFORE YOU DIG" PROCEDURES PRIOR TO UNDERTAKING ANY WORKS WITHIN THE VICINITY OF THE SERVICE LINES TO VERIFY THE POSITION OF THE SERVICE LINES.



REDUCTION RATIO 1 : 200

0 2 4 6 8 10 12 14 16 18 20

LENGTHS ARE IN METRES

CLIENT: MACQUARIE GROUP LTD	
TITLE No: 1/182023 & 1&2/1103195	REF:160915
DATUM: A.H.D.	ISSUE:6
DATE OF SURVEY: 12.12.16	ISSUE DATE:17.02.01
SURVEYOR: KB	SHEET SIZE:AO
DRAFTER: PH	SHEET 2 OF 3 SHEETS

PLAN OF DETAIL & LEVELS AT
No 39 & 50 MARTIN PLACE &
No 1-19 ELIZABETH STREET
SYDNEY

 Suite 301, Level 3, 55 Holt Street
Surry Hills NSW 2012
PO Box 1807
Strawberry Hills NSW 2012
t: (02) 9212 4655
f: (02) 9212 5254
email: reception@linkersurveying.com.au
web site: www.linkersurveying.com.au

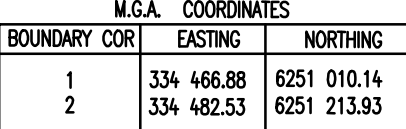
M.G.A. COORDINATES		
BOUNDARY COR	EASTING	NORTHING
1	334 466.88	6251 010.14
2	334 482.53	6251 213.93

EASEMENTS AFFECTING THE PROPERTY

- (A) EASEMENT FOR AIR VENTS (M301506)
- (B) EASEMENT FOR SUPPORT (M301506)
- (C) EASEMENT TO DRAIN WATER (M301506)
- (V) EASEMENT FOR VENTILATION (DP 667285)
- (L) EASEMENT FOR LIGHT (A885003)
- (P) EASEMENT FOR PARTY WALL (508852)
- (R1) EASEMENT FOR RAILWAY TRANSIT (DP 260232)
- (S) SUBSTATION NO 395 (UNDERGROUND) (DP 260232)
- (R1) EASEMENT TO PERMIT ENCRoACHING STRUCTURE TO REMAIN & EASEMENT FOR SUPPORT (DP 1036292)
- (R1) EASEMENT TO PERMIT ENCRoACHING STRUCTURE TO REMAIN & RIGHT OF ACCESS (DP 1036292)
- (A1) RIGHT OF FOOTWAY (DP 1036292)
- (D1) RIGHT OF FOOTWAY (DP 1036292)
- (D1) RIGHT OF FOOTWAY (DP 1036292)
- (D2) EASEMENT FOR RAILWAY PURPOSES (7822764)
- (R3) EASEMENT FOR RAILWAY PURPOSES (7822764)

CROSS EASEMENTS FOR SUPPORT 0.34 MCD (DP 173027) & (DP 492277)

AUSRID SUBSTATION & CONTROL POINT BASE TOGETHER WITH RIGHTS OF WAY & EASEMENTS FOR ELECTRICITY PURPOSES (53261255)

[illegible]

M.G.A. COORDINATES		
BOUNDARY COR	EASTING	NORTHING
1	334 488.88	6251 010.14
2	334 482.53	6251 213.93

- (A) EASEMENT FOR AIR VENTS (M301506)
- (B) EASEMENT FOR SUPPORT (M301506)
- (D) EASEMENT TO DRAIN WATER (M301506)
- (V) EASEMENT FOR VENTILATION (DP 667285)
- (L) EASEMENT FOR LIGHT (A885003)
- (P) EASEMENT FOR PARTY WALL (S08082)
- (R1) EASEMENT FOR RAINWATER TRANSIT (260232)
- (S) SUBSTITUTION N° 395 (UNDERGROUND) (DP 260232)
- (C) SUBSTITUTION N° 395 (UNDERGROUND) (DP 260232)
- (C1) EASEMENT TO PERMIT ENCRoACHING STRUCTURE TO REMAIN & EASEMENT FOR SUPPORT (DP 1036292)
- (C1) EASEMENT TO PERMIT ENCRoACHING STRUCTURE TO REMAIN & RIGHT OF ACCESS (DP 1036292)
- (I) RIGHT OF FOOTWAY (DP 1036292)
- (I) RIGHT OF FOOTWAY (DP 1036292)
- (E) RIGHT OF FOOTWAY (DP 1036292)
- (R2) EASEMENT FOR RAILWAY PURPOSES (R287264)
- (R3) EASEMENT FOR RAILWAY PURPOSES (F522766)
- CROSS EASEMENTS FOR SUPPORT (M301506 (DP 173027) & (DP 929277)
- AUSROAD SUBSTATION & CONTROL POINT BASE TOGETHER WITH RIGHTS OF WAY & EASEMENTS FOR ELECTRICITY PURPOSES (53261255)

1. GROUP OF LINES IN AREA, ELONGATED (Hatched)
2. BEARINGS ARE ON SEA MOUNT.
3. NO BOUNDARY SURVEY HAS BEEN UNDERTAKEN.
4. BEARINGS & DISTANCES HAVE BEEN COMPILED FROM TIME AND/OR CREW INFORMATION SUPPLIED BY SEVERAL SOURCES.
5. RELATIONSHIP OF IMPROVEMENTS AND ACTUAL TO BOUNDARIES IS DIAGNOSTIC ONLY AND SPECIFIC DETAILS, IF CRITICAL, WILL REQUIRE FURTHER SURVEY.
6. SERVICES SHOWN ARE BROD ON VISIBLE SATELLITE INDICATORS DURING AT THE DATE OF SURVEY. LAME SURVEYING OF THESE SERVICES BY VARIOUS AGENCIES HAS BEEN MADE. THESE WILL BE USED FOR INFO ON ANY WORK BEING UNDERTAKEN. LAMERS SERVING PLOT WILL BEAR NO RESPONSIBILITY FOR THE ACCURACY OR COMPLETENESS OF THE SERVICES SHOWN HEREIN.
7. REUSE DATE & OTHER DETAILS HAVE BEEN OBTAINED BY AN INDIRECT METHOD AND ARE ASSUMING FOR PLANNING PURPOSES ONLY.
8. AROUND BUILDINGS AND DOWNGRADES HAVE BEEN PLOTTED FOR DIAGNOSTIC PURPOSES ONLY. SPECIFIC DETAILS, IF CRITICAL, WILL REQUIRE FURTHER SURVEY.
9. THE DIAMETER (H), SPREAD (S) & HEIGHT (H) OF EACH TREE IS INDICATIVE ONLY AND SPECIFIC DETAILS, IF CRITICAL, WILL REQUIRE FURTHER SURVEY.
10. CONTOURS ARE AN INDICATION OF THE TOPOGRAPHY ONLY. SPOT LEVELS SHOULD BE USED IF DETAILLED DESIGN IS TO BE UNDERTAKEN.
11. CONTOUR INTERPOLATION METHOD.

[illegible]

LEGEND OF TYPICAL SERVICES			
C	COMMUNICATIONS CABLE	RM	REINFORCED CONCRETE
CS	CERAMIC COVERED PIPE	RMS	ROADS & MARITIME SERVICES
E	UNDERGROUND ELECTRICITY CABLES	S	SEWER
AL-NO	UNDERGROUND ELECTRICITY & OPTICS CABLES	SO	SEWER OUTFALL
FS	FIRE SERVICE	ST	SHOVED TRENCH
G	GAS LINE	SW	STORM WATER
GS	GAS LINE & ELECTRICITY CABLES	SW-OC	STORMWATER DRAIN
NB	NATURAL BROAD BAND CABLES	TC	TELEVISION CABLES
NE	NATURAL GAS LINE	TC-TC	TELEVISION & GAS CABLES
OH	OVERHEAD CABLES	VO	VEHICULAR SERVICES
OP	OPTICS CABLE	VO	VEHICULAR CABLES
PF	PRIVATE ELECTRICITY	WS	WATER SUPPLY
PS	PRIVATE SEWER	WM	WATER MAIN
PM	PRIVATE WATER		

1. ALL UNDERGROUND SERVICE INFORMATION INCLUSIVE OF GENERAL POSITION AND SURFACE COVER DEPTHS NOTED ON THE PLAN ARE APPROXIMATELY ONLY.
2. ALL UNDERGROUND SERVICE INFORMATION HAS BEEN COMPILED FROM SERVICE AUTHORITY PLANS PROVIDED BY THE AUTHORITIES.
3. THE LOCATION OF SERVICES BETWEEN SURVEINED POINTS (AS INDICATED) HAVE BEEN SHOWN DIRECTIONALLY ONLY USING THE SERVICE DIAGRAMS AS PROVIDED. THE EXACT LOCATION OF THESE SERVICES BETWEEN THE SURVEINED POINTS MUST BE VERIFIED PRIOR TO ANY EXCAVATION OR PILING, AND WARRANTY IS GIVEN AGAINST THE ACCURACY OF THE EXISTENCE OF SURVEINED SERVICES.
4. ALL CONTRACTORS, TRADESMEN, BUILDING A PROJECT CONSULTATIONS MUST CONTACT THE VARIOUS AUTHORITIES, IN ACCORDANCE WITH STANDARD TOWN BEFORE YOU DIG PROCEDURES PRIOR TO UNDERTAKING ANY WORKS WITHIN THE VICINITY OF THE SERVICE LINES TO VERIFY THE POSITION OF THE SERVICE LINES.

 Liability limited by a scheme approved under Professional Standards Legislation

 The Essential PFI Step

REDUCTION RATIO 1 : 200

0 2 4 6 8 10 12 14 16 18 20

LENGTHS ARE IN METRES

CLIENT: MACQUARIE GROUP LTD

TITLE No: 1/182023 & 1&2/1103195	REF:160915
DATUM: A.H.D.	ISSUE:6
DATE OF SURVEY: 12.12.16	ISSUE DATE:17.02.01
SURVEYOR: KB	SHEET SIZE:AO
DRAFTER: PH	SHEET 3 OF 3 SHEETS

PLAN OF DETAIL & LEVELS AT
No 39 & 50 MARTIN PLACE &
No 1-19 ELIZABETH STREET
SYDNEY

 Suite 301, Level 3, 55 Holt Street
Surry Hills NSW 2012
PO Box 1807
Strawberry Hills NSW 2012
t: (02) 9212 4655
f: (02) 9212 5254
email: reception@linkersurveying.com.au
web site: www.linkersurveying.com.au

16JOBS160915 50 MARTIN PLACE160915 DETAIL DWG