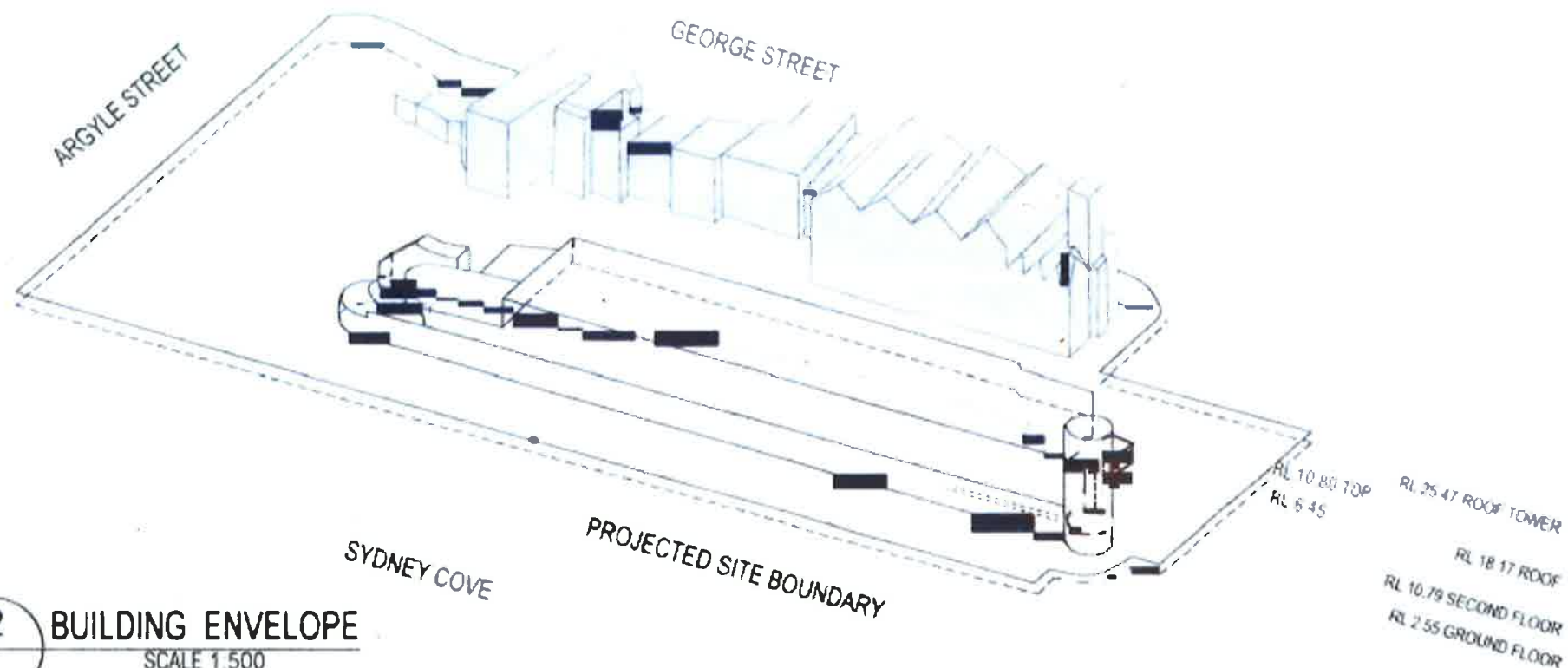


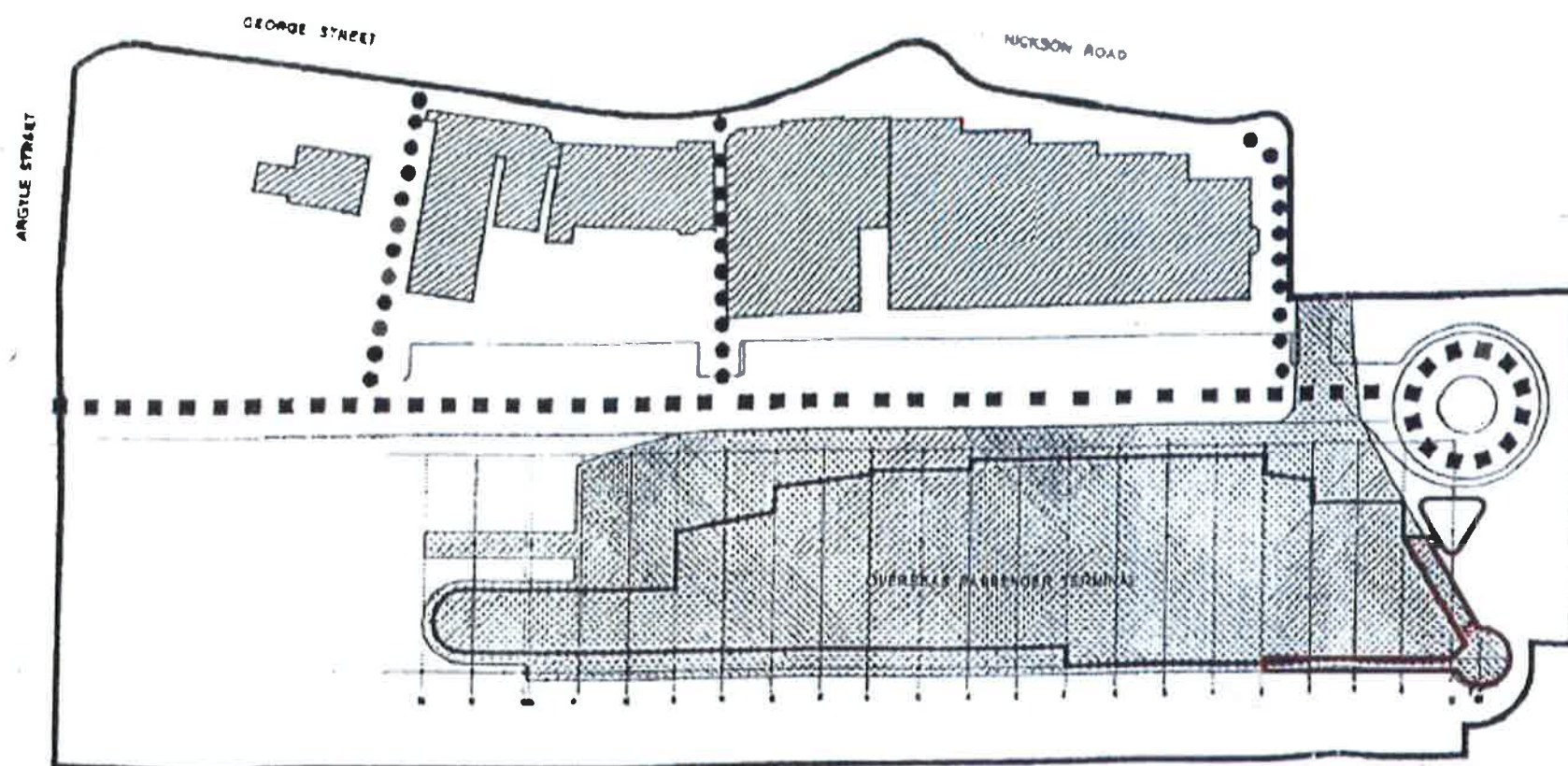
3 SITE LOCATION PLAN

This drawing refers to the land shaded



2 BUILDING ENVELOPE

SCALE 1:500



1 BUILDING SITE CONTROL PLAN

SCALE 1:500

LEGEND

Site boundary	—
Easement	—
Historic buildings	—
Pedestrian Route	• • • • •
Vehicle route	■ ■ ■ ■ ■
Site boundary	—
Proposed amendment	—

As delegate of the Minister for Planning and Public Spaces, under delegation dated 28 February 2016, pursuant to clause 9 of the *Environmental Planning and Assessment (Sydney Cove) Savings and Transitional Regulation 1999*, under the *Environmental Planning and Assessment Act 1979*, approve the variation to the Prescribed Scheme, described by the Control Drawing

Anthea Sargeant
Executive Director
Compliance, Industry and Key Sites

Sargeant 4/10/19
Date

The only elements in respect to Open Space and Public Domain that will be permitted to exceed the envelope include memorials, fountains, lighting, kiosks, flagpoles, **shade structures** and the like.

The general controls as shown on this drawing are subject to the refinement of detail in relation to dimensions, easements, usage, open spaces and means of circulation and the sites shall be subject to such further conditions in relation to architectural details, staging, timing and future development consents.

BUILDING SITE CONTROL DRAWING XLV1A - 1B
DEPARTMENT OF PLANNING, INDUSTRY AND ENVIRONMENT