

NOTES:
Tree location , terraces, and other public domain elements
are subject to future confirmation from City of Sydney

Material Legend	
Key Value	Keynote Text
AMW-107	Aluminium Bar Grille
CLG-102	Suspended moisture resistant plasterboard ceiling
CON-103	Off-form concrete finish - class 3
ELG-202	Profiled Aluminium Facade Cladding
ELG-205	Aluminium Sheet Facade Cladding
ELG-402	Stone Cladding - Large Format Granite (Polished)
ELG-404	Stone Cladding - Large Format Granite (Honed)
ELG-406	Stone Baguette Cladding
ELG-501	Ceramic Cladding Tile - Type 1 (Gloss)
ELG-502	Ceramic Cladding Tile - Type 2 (Matt)
ELG-503	Ceramic Cladding Tile - Type 3 (Matt Type 2)
ELG-504	Ceramic Cladding Tile - Type 4 (Matt Type 3)
GLS-107	Facade Glazing - Single Glazing
GLS-108	Facade Glazing - Double Glazing
GLS-109	Facade Glazing - Colourback Double Glazing
LVR-104	Large Ceramic Baguette
LVR-105	Small Ceramic Baguette
PAV-104	Stone Modular Paving 1
RFS-101	Metal sheet roof

Rev	App	Ckd	Revision or reason for issue	Date	Legend
A	KT		Stage 2 DA DRAFT	29/06/18	
B	KT		Stage 2 DA DRAFT	03/07/18	
C	KT		Stage 2 DA Draft	10/07/18	
D	KT		Stage 2 DA	18/07/18	
E	KT		Stage 2 DA	01/08/18	
F	KT		Stage II SSDA	03/08/18	
G	AB		Stage II SSDA	08/08/18	
H	KT		Stage II SSDA	10/08/18	
J	KT		Stage II SSDA	22/08/18	

CSSE Areas (not for approval)

CSSE detail is indicative and subject to separate approval.

Final OSD detail on station levels is subject to issue of the relevant construction certificate and approved Station Design and Precinct Plan.

Scale / North Point

1:200 @ A1, 1:400 @ A3

General Notes

Do not scale from drawing. Use marked dimensions. To be read in conjunction with all other Consultant's drawings. The Architect to be immediately notified of any discrepancies. Copyright on this drawing retained by the Architect.

Notes

This architectural package describes the South Tower. Refer to Grimshaw for Metro and JPW for North Tower

Disclaimer

Street trees, furniture and other public domain elements within the precinct are indicative only and are subject to relevant approvals and detailed coordination with new and existing underground utilities and infrastructure.

Architect

GRIMSHAW

Grimshaw
Level 2, 333 George Street, Sydney
New South Wales 2000 Australia

Telephone + +61 2 9253 0200
Email info@grimshaw-architects.com

Authoring Organisation

tzannes

Tzannes
Level 5, 2-12 Foveaux Street, Surry Hills
New South Wales 2000 Australia

Telephone +61 2 9319 3744
Email tzannes@tzannes.com.au

Project Title
**SYDNEY METRO MARTIN PLACE
INTEGRATED STATION DEVELOPMENT**



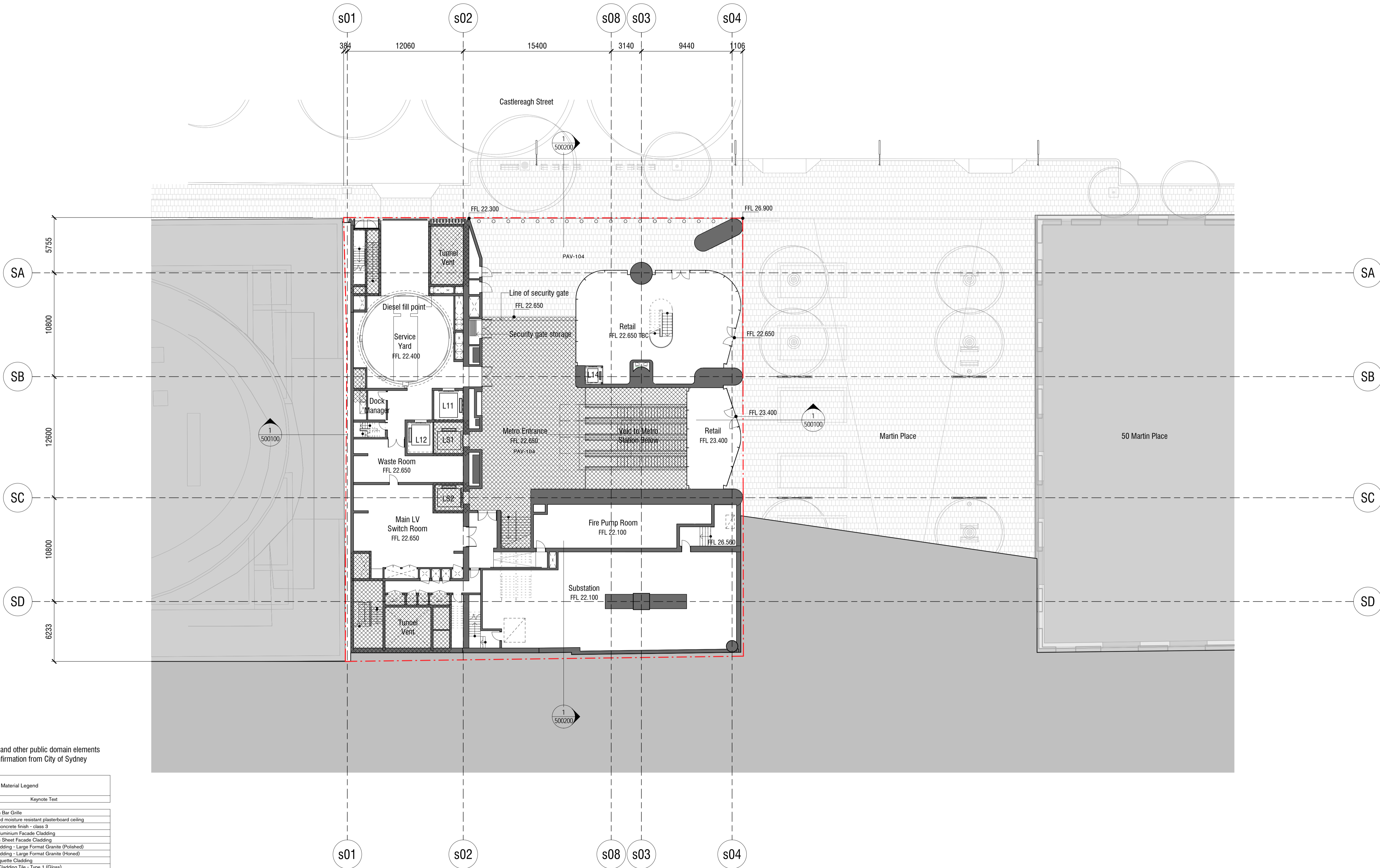
Client
Macquarie Group Ltd
50 Martin Place, Sydney
New South Wales 2000 Australia
Telephone +61 2 8232 3333
Email: www.macquarie.com

Drawing Title
Level Mezzanine Plan

Status
STAGE II SSDA

Drawing Number
CSWSMP-MAC-SMS-AT-DRG-DA-306000

Revision
J



NOTES:
Tree location , terraces, and other public domain elements
are subject to future confirmation from City of Sydney

Material Legend	
Key Value	Keynote Text
AMW-107	Aluminium Bar Grille
CLG-102	Suspended moisture resistant plasterboard ceiling
CON-103	Off-form concrete finish - class 3
ELG-202	Profiled Aluminium Facade Cladding
ELG-205	Aluminium Sheet Facade Cladding
ELG-402	Stone Cladding - Large Format Granite (Polished)
ELG-404	Stone Cladding - Large Format Granite (Honed)
ELG-406	Stone Baguette Cladding
ELG-501	Ceramic Cladding Tile - Type 1 (Gloss)
ELG-502	Ceramic Cladding Tile - Type 2 (Matt)
ELG-503	Ceramic Cladding Tile - Type 3 (Matt Type 2)
ELG-504	Ceramic Cladding Tile - Type 4 (Matt Type 3)
GLS-107	Facade Glazing - Single Glazing
GLS-108	Facade Glazing - Double Glazing
GLS-109	Facade Glazing - Colourback Double Glazing
LVR-104	Large Ceramic Baguette
LVR-105	Small Ceramic Baguette
PAV-104	Stone Modular Paving 1
RFS-101	Metal sheet roof

Rev	App	Ckd	Revision or reason for issue	Date	Legend
A	KT		Stage 2 DA DRAFT	29/06/18	
B	KT		Stage 2 DA DRAFT	03/07/18	
C	KT		Stage 2 DA Draft	10/07/18	
D	KT		Stage 2 DA	18/07/18	
E	KT		Stage 2 DA	01/08/18	
F	KT		Stage II SSDA	03/08/18	
G	AB		Stage II SSDA	08/08/18	
H	KT		Stage II SSDA	10/08/18	
J	KT		Stage II SSDA	22/08/18	

CSI Areas (not for approval)

CSI detail is indicative and subject to separate approval.

Final OSD detail on station levels is subject to issue of the relevant construction certificate and approved Station Design and Precinct Plan.

Scale / North Point

1:200 @ A1, 1:400 @ A3

General Notes

Do not scale from drawing. Use marked dimensions. To be read in conjunction with all other Consultant's drawings. The Architect to be immediately notified of any discrepancies. Copyright on this drawing retained by the Architect.

Notes

This architectural package describes the South Tower. Refer to Grimshaw for Metro and JPV for North Tower

Disclaimer

Street trees, furniture and other public domain elements within the precinct are indicative only and are subject to relevant approvals and detailed coordination with new and existing underground utilities and infrastructure.

Architect

GRIMSHAW

Grimshaw
Level 2, 333 George Street, Sydney
New South Wales 2000 Australia

Telephone + +61 2 9253 0200
Email info@grimshaw-architects.com

Authoring Organisation

Tzannes

Tzannes
Level 5, 2-12 Foveaux Street, Surry Hills
New South Wales 2010 Australia

Telephone + +61 2 9319 3744
Email tzannes@tzannes.com.au

Project Title
**SYDNEY METRO MARTIN PLACE
INTEGRATED STATION DEVELOPMENT**



Client
Macquarie Group Ltd
50 Martin Place, Sydney
New South Wales 2000 Australia
Telephone +61 2 8232 3333
Email: www.macquarie.com

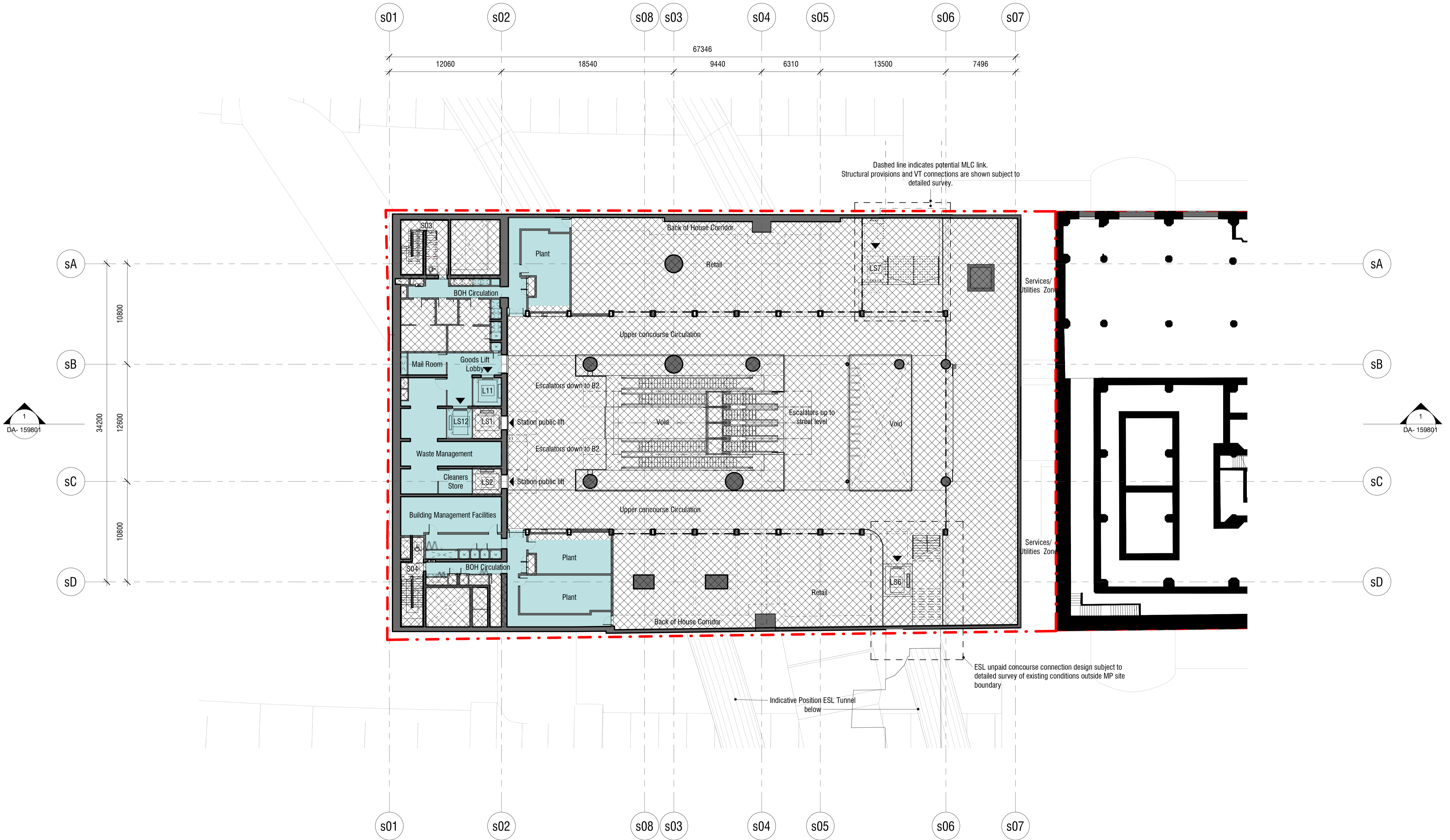
Drawing Title
Level LG Plan

Status
STAGE II SSDA

Drawing Number

CSWSMP-MAC-SMS-AT-DRG-DA-308000

Revision
J



Rev	App	Ckd	Revision or reason for issue	Date
0	AC	MC	STAGE II SSDA - DRAFT ISSUE	29.06.2018
1	AC	MC	STAGE II SSDA - DRAFT ISSUE	18.07.2018
2	AC	MC	STAGE II SSDA - DRAFT ISSUE	03.08.2018
3	AC	MC	STAGE II SSDA - DRAFT ISSUE	09.08.2018
A	AC	MC	STAGE II SSDA - DRAFT ISSUE	10.08.2018
B	AC	MC	STAGE II SSDA	23.08.2018

Legend
CSSI Areas (not for approval)
Site Boundary
SSSA areas below-ground

Scale / North Point

1:200 @ A1, 1:400 @ A3

0 2 4 6 10

General Notes

Do not scale from drawing. Use marked dimensions. To be read in conjunction with all other Consultant's drawings. The Architect to be immediately notified of any discrepancies. Copyright on this drawing retained by the Architect.

Notes

This architectural package describes metro-related areas. Refer to Tzannes for South OSD and JPW for North OSD.

CSSI detail is indicative and subject to separate approval.

Final OSD detail on station levels is subject to issue of the relevant construction certificate and approved Station Design and Precinct Plan

Street trees, furniture, and other public domain elements within the precinct are indicative only and are subject to relevant approvals and detailed coordination with new and existing underground utilities and infrastructure.

Authoring Organisation

GRIMSHAW

Grimshaw
Level 2, 333 George Street, Sydney
New South Wales 2000 Australia

Telephone +61 2 9253 0200
Email info@grimshaw-architects.com

Architect

Tzannes

Tzannes
63 Myrtle Street, Chippendale
New South Wales 2008 Australia

Telephone +61 2 9319 3744
Email tzannes@tzannes.com.au

Project Title

SYDNEY METRO MARTIN PLACE - integrated station development

Client
Macquarie Group Ltd
50 Martin Place, Sydney
New South Wales 2000 Australia

Telephone +61 2 8232 3333
Email www.macquarie.com

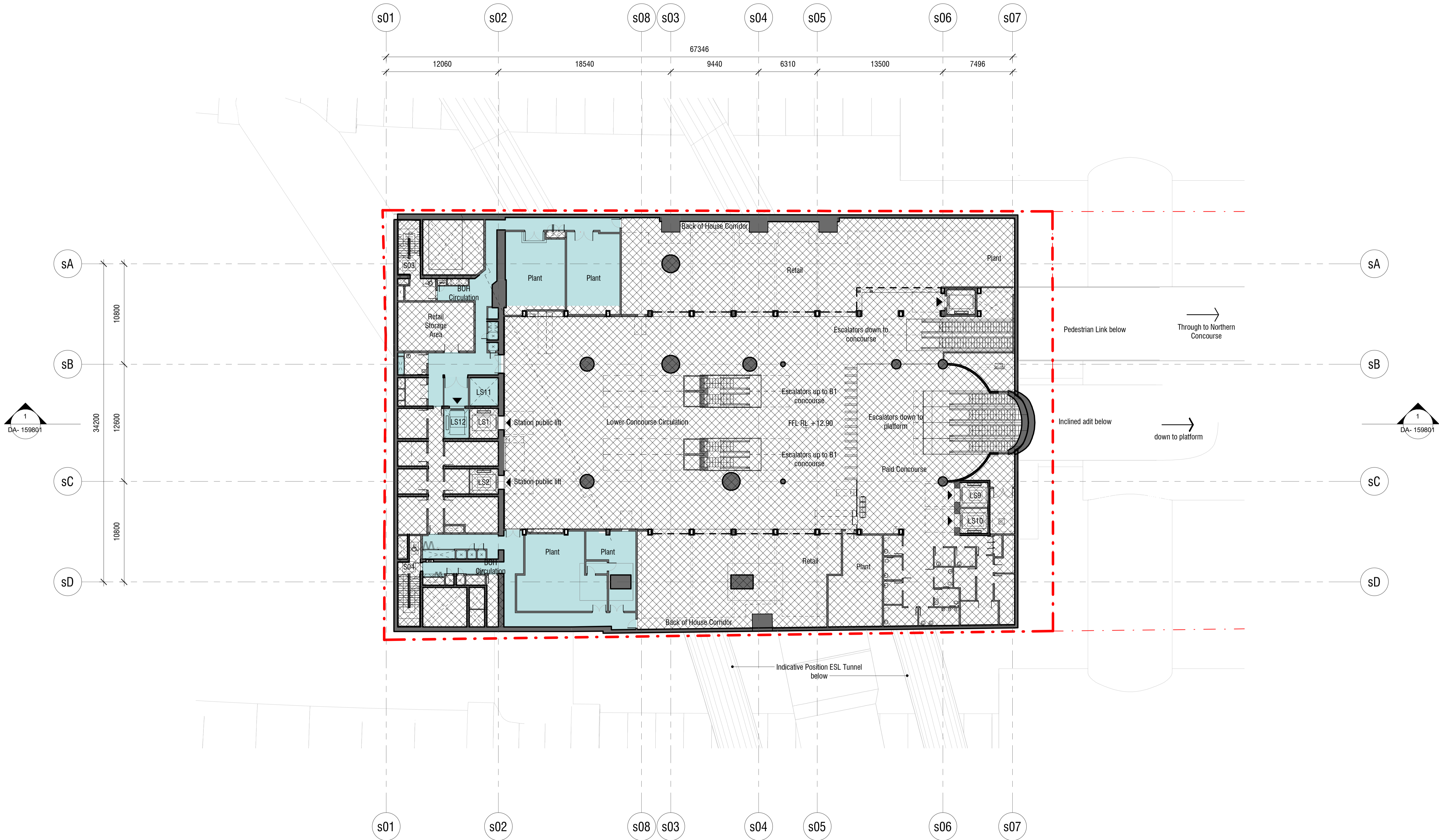
Drawing Title

LEVEL B1 PLAN - UPPER CONCOURSE

Status
STAGE II SSDA

Drawing Number
CSWSMP- MAC- SMS- AT- DRG- DA- 308100_B

Revision
B



Rev	App	Ckd	Revision or reason for issue	Date
0	AC	MC	STAGE II SSDA - DRAFT ISSUE	29.06.2018
1	AC	MC	STAGE II SSDA - DRAFT ISSUE	18.07.2016
2	AC	MC	STAGE II SSDA - DRAFT ISSUE	03.08.2018
3	AC	MC	STAGE II SSDA - DRAFT ISSUE	09.08.2018
A	AC	MC	STAGE II SSDA - DRAFT ISSUE	10.08.2018
B	AC	MC	STAGE II SSDA	23.08.2018

Legend
CSSI Areas (not for approval)
Site Boundary
SSSA areas below-ground

Scale / North Point

1:200 @ A1, 1:400 @ A3

0 2 4 6 10

General Notes

Do not scale from drawing. Use marked dimensions. To be read in conjunction with all other Consultant's drawings. The Architect to be immediately notified of any discrepancies. Copyright on this drawing retained by the Architect.

Notes

This architectural package describes metro-related areas. Refer to Tzannes for South OSD and JPW for North OSD.

CSSI detail is indicative and subject to separate approval.

Final OSD detail on station levels is subject to issue of the relevant construction certificate and approved Station Design and Precinct Plan

Street trees, furniture, and other public domain elements within the precinct are indicative only and are subject to relevant approvals and detailed coordination with new and existing underground utilities and infrastructure.

Authoring Organisation

GRIMSHAW

Grimshaw
Level 2, 333 George Street, Sydney
New South Wales 2000 Australia

Telephone +61 2 9253 0200
Email info@grimshaw-architects.com

Architect

Tzannes

Tzannes
63 Myrtle Street, Chippendale
New South Wales 2008 Australia

Telephone +61 2 9319 3744
Email tzannes@tzannes.com.au

Project Title

SYDNEY METRO MARTIN PLACE - integrated station development

Client
Macquarie Group Ltd
50 Martin Place, Sydney
New South Wales 2000 Australia

Telephone +61 2 8232 3333
Email: www.macquarie.com

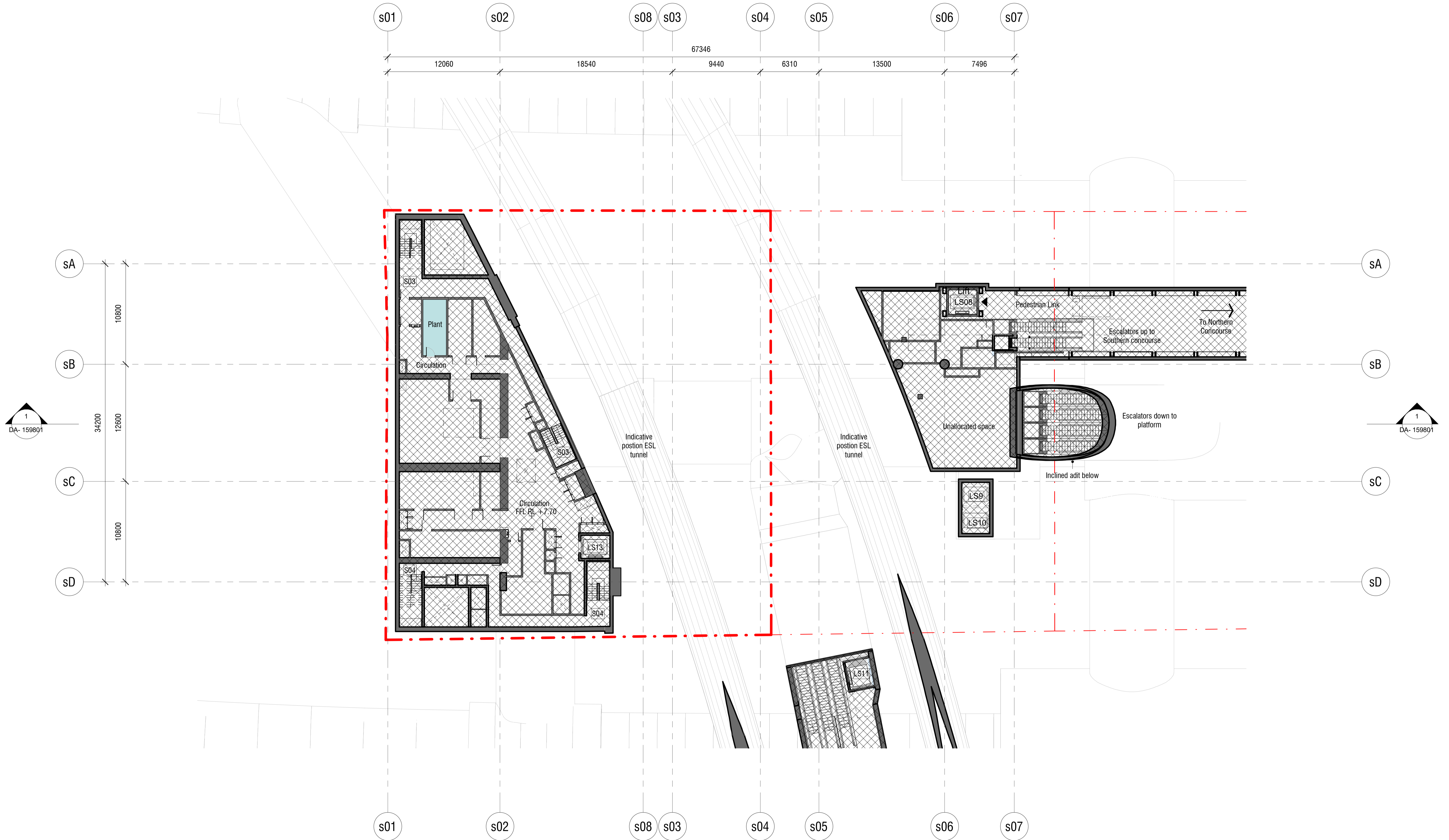
Drawing Title

LEVEL B2 PLAN - LOWER CONCOURSE

Status
STAGE II SSDA

Drawing Number
CSWSMP- MAC- SMS- AT- DRG- DA- 308200_B

Revision
B



Rev	App	Ckd	Revision or reason for issue	Date
0	AC	MC	STAGE II SSDA - DRAFT ISSUE	29.06.2018
1	AC	MC	STAGE II SSDA - DRAFT ISSUE	18.07.2018
2	AC	MC	STAGE II SSDA - DRAFT ISSUE	03.08.2018
3	AC	MC	STAGE II SSDA - DRAFT ISSUE	09.08.2018
A	AC	MC	STAGE II SSDA - DRAFT ISSUE	10.08.2018
B	AC	MC	STAGE II SSDA	23.08.2018

Legend
CSSI Areas (not for approval)
Site Boundary
SSDA areas below-ground

Scale / North Point

1:200 @ A1, 1:400 @ A3

0 2 4 6 10

General Notes

Do not scale from drawing. Use marked dimensions. To be read in conjunction with all other Consultant's drawings. The Architect to be immediately notified of any discrepancies. Copyright on this drawing retained by the Architect.

Notes

This architectural package describes metro-related areas. Refer to Tzannes for South OSD and JPW for North OSD.

CSSI detail is indicative and subject to separate approval.

Final OSD detail on station levels is subject to issue of the relevant construction certificate and approved Station Design and Precinct Plan

Street trees, furniture, and other public domain elements within the precinct are indicative only and are subject to relevant approvals and detailed coordination with new and existing underground utilities and infrastructure.

Authoring Organisation

GRIMSHAW

Grimshaw
Level 2, 333 George Street, Sydney
New South Wales 2000 Australia

Telephone +61 2 9253 0200
Email info@grimshaw-architects.com

Architect

Tzannes

Tzannes
63 Myrtle Street, Chippendale
New South Wales 2008 Australia

Telephone +61 2 9319 3744
Email tzannes@tzannes.com.au

Project Title

SYDNEY METRO MARTIN PLACE - integrated station development

Client
Macquarie Group Ltd
50 Martin Place, Sydney
New South Wales 2000 Australia

Telephone +61 2 8232 3333
Email www.macquarie.com

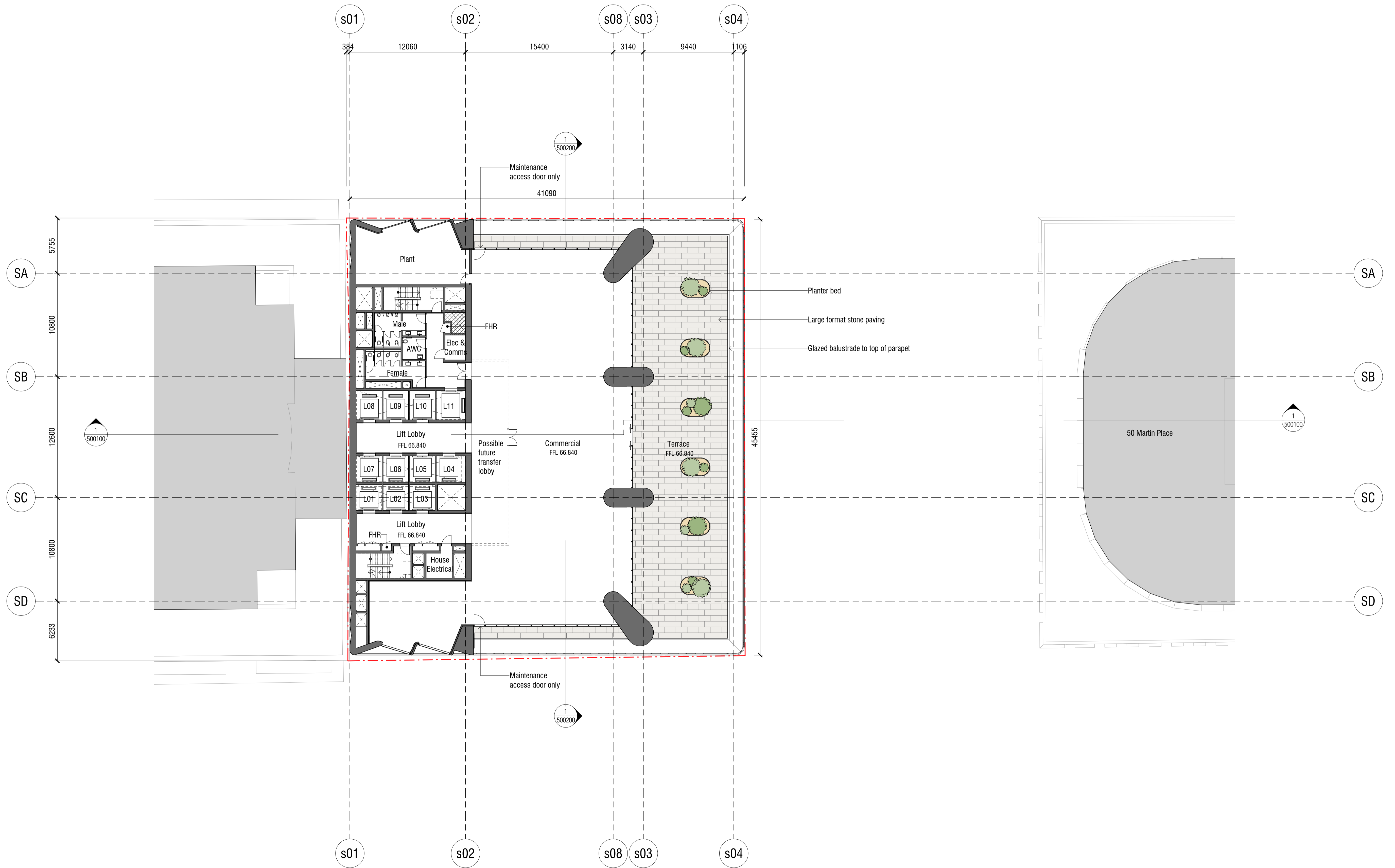
Drawing Title

LEVEL B3 PLAN - METRO STATION PLANT

Status
STAGE II SSDA

Drawing Number
CSWSMP- MAC- SMS- AT- DRG- DA- 308300_B


Revision
B



- STONE
- ELG-402 Stone cladding - large format granite (polished)
 - ELG-404 Stone cladding - large format granite (honed)
- CERAMIC
- ELG-501 Ceramic cladding tile - type 1 (gloss)
 - ELG-502 Ceramic cladding tile - type 2 (matt fluted profile)
 - ELG-503 Ceramic cladding tile - type 3 (matt)
 - ELG-504 Ceramic cladding tile - type 4 (matt - trafficable)

Material Legend	
Key Value	Keynote Text
AMW-107	Aluminium Bar Grille
CLG-102	Suspended moisture resistant plasterboard ceiling
CON-103	Off-form concrete finish - class 3
ELG-202	Profiled Aluminium Facade Cladding
ELG-205	Aluminium Sheet Facade Cladding
ELG-402	Stone Cladding - Large Format Granite (Polished)
ELG-404	Stone Cladding - Large Format Granite (Honed)
ELG-406	Stone Baguette Cladding
ELG-501	Ceramic Cladding Tile - Type 1 (Gloss)
ELG-502	Ceramic Cladding Tile - Type 2 (Matt)
ELG-503	Ceramic Cladding Tile - Type 3 (Matt Type 2)
ELG-504	Ceramic Cladding Tile - Type 4 (Matt Type 3)
GLS-107	Facade Glazing - Single Glazing
GLS-108	Facade Glazing - Double Glazing
GLS-109	Facade Glazing - Colourback Double Glazing
LVR-104	Large Ceramic Baguette
LVR-105	Small Ceramic Baguette
PAV-104	Stone Modular Paving 1
RFS-101	Metal sheet roof

Rev	App	Ckd	Revision or reason for issue	Date	Legend
A	KT		Stage 2 DA DRAFT	29/06/18	
B	KT		Stage 2 DA DRAFT	03/07/18	
C	KT		Stage 2 DA	18/07/18	
D	KT		Stage 2 DA	01/08/18	
E	KT		Stage II SSDA	03/08/18	
F	KT		Stage II SSDA	10/08/18	
G	KT		Stage II SSDA	22/08/18	

 CSI Areas (not for approval)

CSI detail is indicative and subject to separate approval.

Final OSD detail on station levels is subject to issue of the relevant construction certificate and approved Station Design and Precinct Plan.

Scale / North Point

1:250 @ A1, 1:500 @ A3

General Notes

Do not scale from drawing. Use marked dimensions. To be read in conjunction with all other Consultant's drawings. The Architect to be immediately notified of any discrepancies. Copyright on this drawing retained by the Architect.

Notes

This architectural package describes the South Tower. Refer to Grimshaw for Metro and JPW for North Tower

Architect

GRIMSHAW

Grimshaw
Level 2, 333 George Street, Sydney
New South Wales 2000 Australia

Telephone + +61 2 9253 0200
Email info@grimshaw-architects.com

Authoring Organisation

tzannes

Tzannes
Level 5, 2-12 Foveaux Street, Surry Hills
New South Wales 2010 Australia

Telephone +61 2 9319 3744
Email tzannes@tzannes.com.au

Project Title
**SYDNEY METRO MARTIN PLACE
INTEGRATED STATION DEVELOPMENT**



Client
Macquarie Group Ltd
50 Martin Place, Sydney
New South Wales 2000 Australia

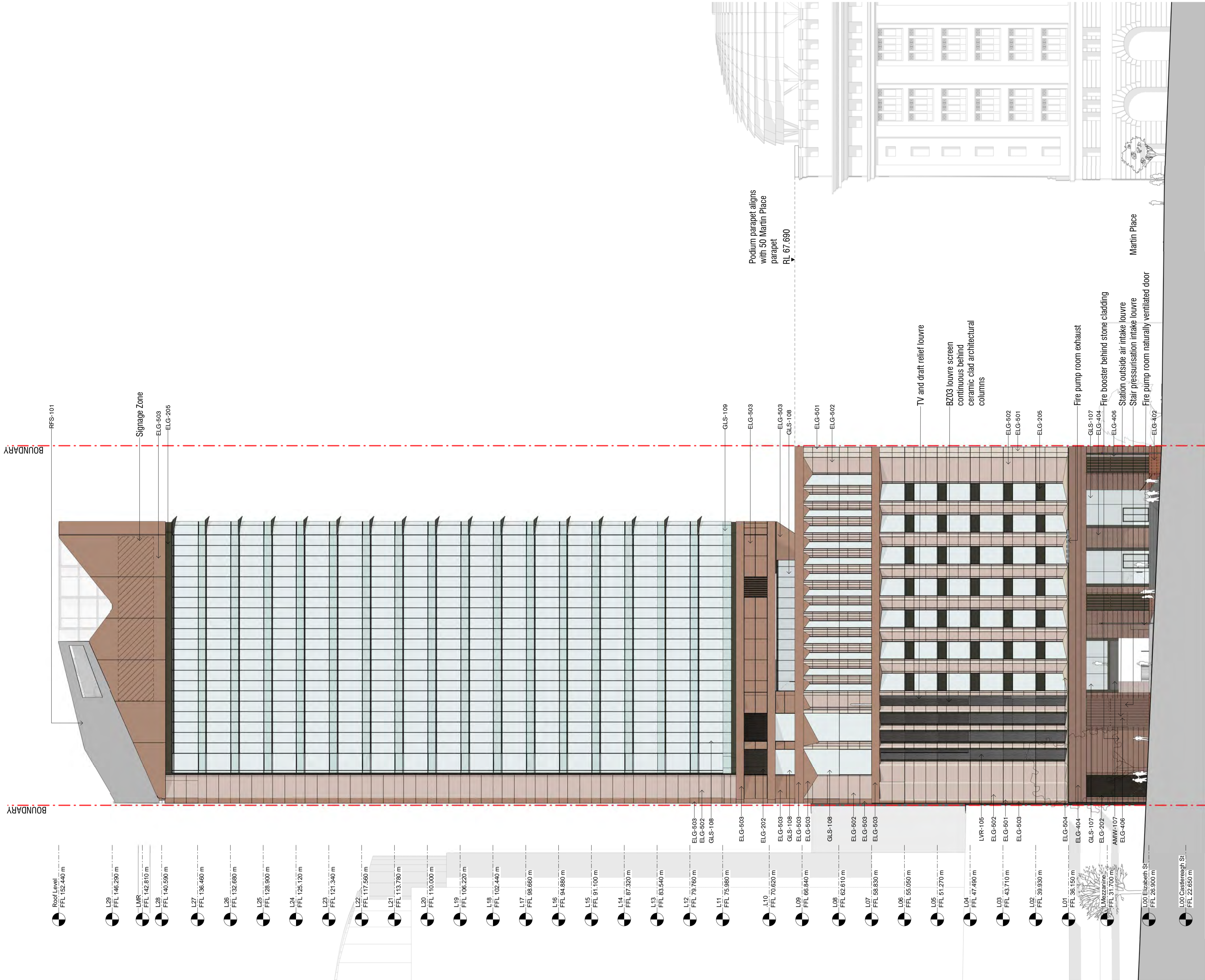
Telephone +61 2 8232 3333
Email: www.macquarie.com

Drawing Title
East Elevation

Status
STAGE II SSDA

Revision
G


Drawing Number
CSWSMP-MAC-SMS-AT-DRG-DA-400100



1 | DA - East Elevation
1:250

Material Legend	
Key Value	Keynote Text
AMW-107	Aluminium Bar Grille
CLG-102	Suspended moisture resistant plasterboard ceiling
CON-103	Off-form concrete finish - class 3
ELG-202	Profiled Aluminium Facade Cladding
ELG-205	Aluminium Sheet Facade Cladding
ELG-402	Stone Cladding - Large Format Granite (Polished)
ELG-404	Stone Cladding - Large Format Granite (Honed)
ELG-405	Stone Baguette Cladding
ELG-501	Ceramic Cladding Tile - Type 1 (Gloss)
ELG-502	Ceramic Cladding Tile - Type 2 (Matt)
ELG-503	Ceramic Cladding Tile - Type 3 (Matt Type 2)
ELG-504	Ceramic Cladding Tile - Type 4 (Matt Type 3)
GLS-107	Facade Glazing - Single Glazing
GLS-108	Facade Glazing - Double Glazing
GLS-109	Facade Glazing - Colourback Double Glazing
LVR-104	Large Ceramic Baguette
LVR-105	Small Ceramic Baguette
PAV-104	Stone Modular Paving 1
RFS-101	Metal sheet roof

Rev	App	Ckd	Revision or reason for issue	Date	Legend
A	KT		Stage 2 DA DRAFT	29/06/18	
B	KT		Stage 2 DA DRAFT	03/07/18	
C	KT		Stage 2 DA	18/07/18	
D	KT		Stage 2 DA	01/08/18	
E	KT		Stage II SSDA	03/08/18	
F	KT		Stage II SSDA	10/08/18	
G	KT		Stage II SSDA	22/08/18	

 CSSI Areas (not for approval)

CSSI detail is indicative and subject to separate approval.

Final OSD detail on station levels is subject to issue of the relevant construction certificate and approved Station Design and Precinct Plan.

Scale / North Point

1:250 @ A1, 1:500 @ A3

General Notes

Do not scale from drawing. Use marked dimensions. To be read in conjunction with all other Consultant's drawings. The Architect to be immediately notified of any discrepancies. Copyright on this drawing retained by the Architect.

Notes

This architectural package describes the South Tower. Refer to Grimshaw for Metro and JPW for North Tower

Architect

GRIMSHAW

Grimshaw
Level 5, 2-33 George Street, Sydney
New South Wales 2000 Australia

Telephone + +61 2 9253 0200
Email info@grimshaw-architects.com

Authoring Organisation

tzannes

Tzannes
Level 5, 2-12 Foveaux Street, Surry Hills
New South Wales 2010 Australia

Telephone +61 2 9319 3744
Email tzannes@tzannes.com.au

Project Title
**SYDNEY METRO MARTIN PLACE
INTEGRATED STATION DEVELOPMENT**



Client
Macquarie Group Ltd
50 Martin Place, Sydney
New South Wales 2000 Australia

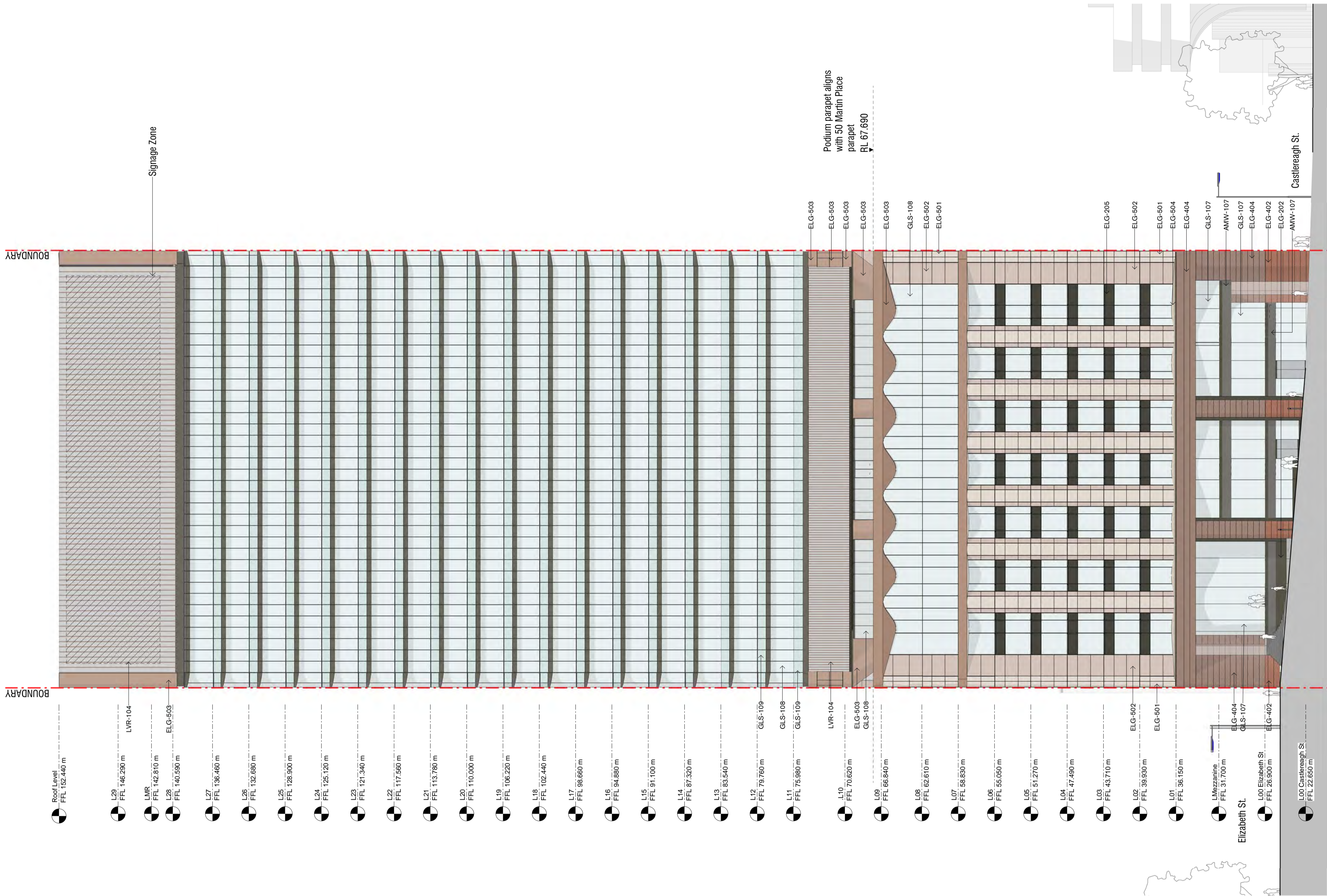
Telephone +61 2 8232 3333
Email: www.macquarie.com

Drawing Title
North Elevation

Status
STAGE II SSDA

Revision
G

Drawing Number
CSWSMP-MAC-SMS-AT-DRG-DA-400200



1 | **DA - North Elevation**
1:250

- STONE
- ELG-402 Stone cladding - large format granite (polished)
 - ELG-404 Stone cladding - large format granite (honed)
- CERAMIC
- ELG-501 Ceramic cladding tile - type 1 (gloss)
 - ELG-502 Ceramic cladding tile - type 2 (matt fluted profile)
 - ELG-503 Ceramic cladding tile - type 3 (matt)
 - ELG-504 Ceramic cladding tile - type 4 (matt - trafficable)

Material Legend	
Key Value	Keynote Text
AMW-107	Aluminium Bar Grille
CLG-102	Suspended moisture resistant plasterboard ceiling
CON-103	Off-form concrete finish - class 3
ELG-202	Profiled Aluminium Facade Cladding
ELG-205	Aluminium Sheet Facade Cladding
ELG-402	Stone Cladding - Large Format Granite (Polished)
ELG-404	Stone Cladding - Large Format Granite (Honed)
ELG-405	Stone Baguette Cladding
ELG-501	Ceramic Cladding Tile - Type 1 (Gloss)
ELG-502	Ceramic Cladding Tile - Type 2 (Matt)
ELG-503	Ceramic Cladding Tile - Type 3 (Matt Type 2)
ELG-504	Ceramic Cladding Tile - Type 4 (Matt Type 3)
GLS-107	Facade Glazing - Single Glazing
GLS-108	Facade Glazing - Double Glazing
GLS-109	Facade Glazing - Colourback Double Glazing
LVR-104	Large Ceramic Baguette
LVR-105	Small Ceramic Baguette
PAV-104	Stone Modular Paving 1
RFS-101	Metal sheet roof

Rev	App	Ckd	Revision or reason for issue	Date	Legend
A	KT		Stage 2 DA DRAFT	29/06/18	
B	KT		Stage 2 DA DRAFT	03/07/18	
C	KT		Stage 2 DA	18/07/18	
D	KT		Stage 2 DA	01/08/18	
E	KT		Stage II SSDA	03/08/18	
F	KT		Stage II SSDA	10/08/18	
G	KT		Stage II SSDA	22/08/18	

☒ CSSI Areas (not for approval)

CSSI detail is indicative and subject to separate approval.

Final OSD detail on station levels is subject to issue of the relevant construction certificate and approved Station Design and Precinct Plan.

Scale / North Point

1:250 @ A1, 1:500 @ A3

General Notes

Do not scale from drawing. Use marked dimensions. To be read in conjunction with all other Consultant's drawings. The Architect to be immediately notified of any discrepancies. Copyright on this drawing retained by the Architect.

Notes

This architectural package describes the South Tower. Refer to Grimshaw for Metro and JPW for North Tower

Architect

GRIMSHAW

Grimshaw
Level 2, 333 George Street, Sydney
New South Wales 2000 Australia
Telephone + +61 2 9253 0200
Email info@grimshaw-architects.com

Authoring Organisation

tzannes

Tzannes
Level 5, 2-12 Foveaux Street, Surry Hills
New South Wales 2000 Australia
Telephone +61 2 9319 3744
Email tzannes@tzannes.com.au

Project Title
**SYDNEY METRO MARTIN PLACE
INTEGRATED STATION DEVELOPMENT**



Client
Macquarie Group Ltd
50 Martin Place, Sydney
New South Wales 2000 Australia
Telephone +61 2 8232 3333
Email: www.macquarie.com

Drawing Title
West Elevation

Status
STAGE II SSDA

Drawing Number
CSWSMP-MAC-SMS-AT-DRG-DA-400300

Revision
G

1 | **DA - West elevation**
1:250

- STONE
- ELG-402 Stone cladding - large format granite (polished)
 - ELG-404 Stone cladding - large format granite (honed)
- CERAMIC
- ELG-501 Ceramic cladding tile - type 1 (gloss)
 - ELG-502 Ceramic cladding tile - type 2 (matt fluted profile)
 - ELG-503 Ceramic cladding tile - type 3 (matt)
 - ELG-504 Ceramic cladding tile - type 4 (matt - trafficable)

Material Legend		
Key Value	Keystone Text	
AMW-107	Aluminium Bar Grille	
CLG-102	Suspended moisture resistant plasterboard ceiling	
CON-103	Off-form concrete finish - class 3	
ELG-202	Profiled Aluminium Facade Cladding	
ELG-205	Aluminium Sheet Facade Cladding	
ELG-402	Stone Cladding - Large Format Granite (Polished)	
ELG-404	Stone Cladding - Large Format Granite (Honed)	
ELG-406	Stone Baguette Cladding	
ELG-501	Ceramic Cladding Tile - Type 1 (Gloss)	
ELG-502	Ceramic Cladding Tile - Type 2 (Matt)	
ELG-503	Ceramic Cladding Tile - Type 3 (Matt Type 2)	
ELG-504	Ceramic Cladding Tile - Type 4 (Matt Type 3)	
GLS-107	Facade Glazing - Single Glazing	
GLS-108	Facade Glazing - Double Glazing	
GLS-109	Facade Glazing - Colourback Double Glazing	
LVR-104	Large Ceramic Baguette	
LVR-105	Small Ceramic Baguette	
PAV-104	Stone Modular Paving 1	
RFS-101	Metal sheet roof	

Rev	App	Ckd	Revision or reason for issue	Date	Legend
A	KT		Stage 2 DA DRAFT	29/06/18	
B	KT		Stage 2 DA DRAFT	03/07/18	
C	KT		Stage 2 DA	18/07/18	
D	KT		Stage 2 DA	01/08/18	
E	KT		Stage II SSDA	03/08/18	
F	KT		Stage II SSDA	22/08/18	

CSI Areas (not for approval)

CSI detail is indicative and subject to separate approval.

Final OSD detail on station levels is subject to issue of the relevant construction certificate and approved Station Design and Precinct Plan.

Scale / North Point

1:250 @ A1, 1:500 @ A3

General Notes

Do not scale from drawing. Use marked dimensions. To be read in conjunction with all other Consultant's drawings. The Architect to be immediately notified of any discrepancies. Copyright on this drawing retained by the Architect.

Notes

This architectural package describes the South Tower. Refer to Grimshaw for Metro and JPV for North Tower

Architect

GRIMSHAW

Grimshaw
Level 2, 333 George Street, Sydney
New South Wales 2000 Australia

Telephone + +61 2 9253 0200
Email info@grimshaw-architects.com

Authoring Organisation

tzannes

Tzannes
Level 5, 2-12 Foveaux Street, Surry Hills
New South Wales 2000 Australia

Telephone +61 2 9319 3744
Email tzannes@tzannes.com.au

Project Title
SYDNEY METRO MARTIN PLACE
INTEGRATED STATION DEVELOPMENT



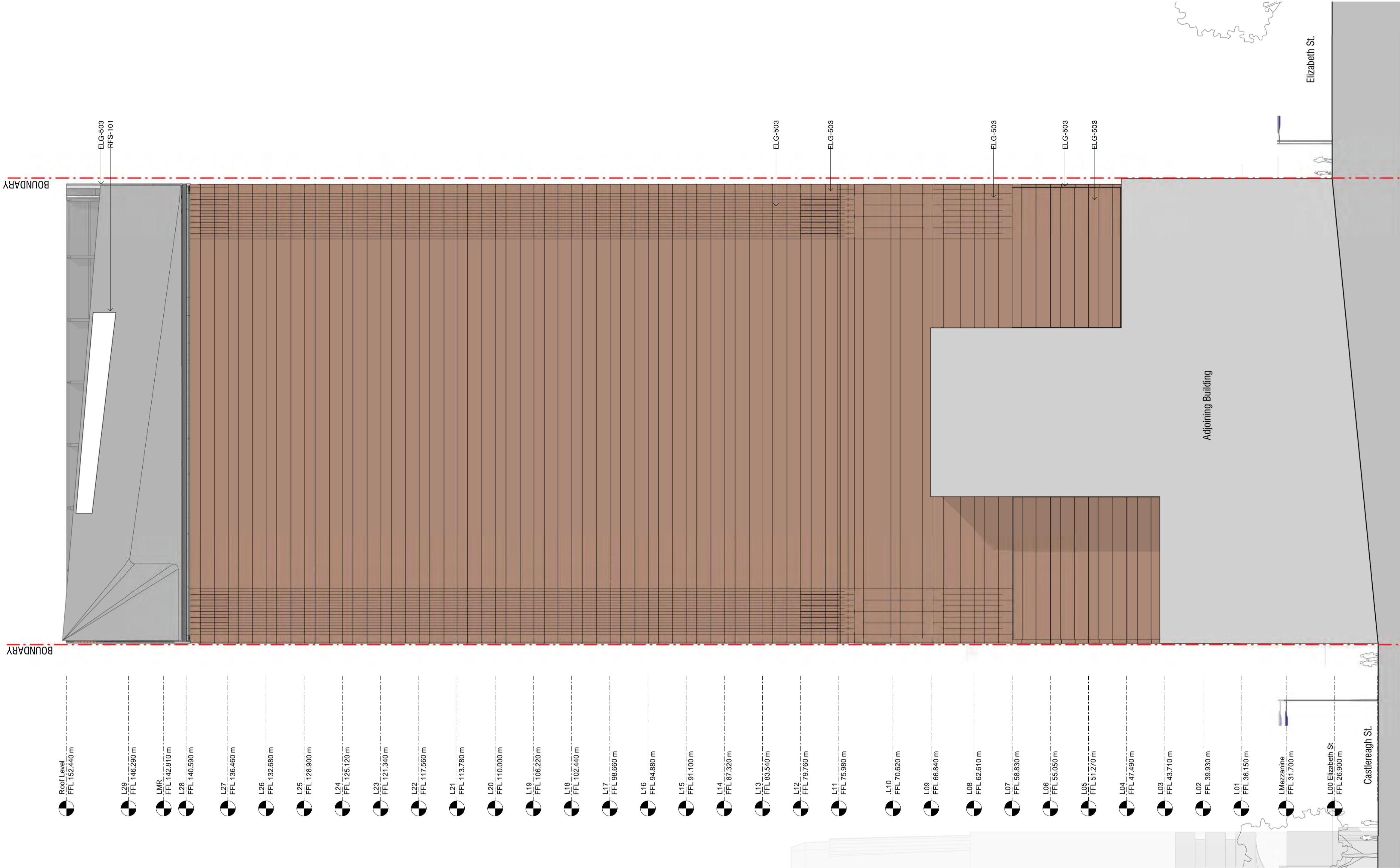
Client
Macquarie Group Ltd
50 Martin Place, Sydney
New South Wales 2000 Australia

Telephone +61 2 8232 3333
Email: www.macquarie.com

Drawing Title
South Elevation

Status
STAGE II SSDA
Drawing Number
CSWSMP-MAC-SMS-AT-DRG-DA-400400

Revision
F

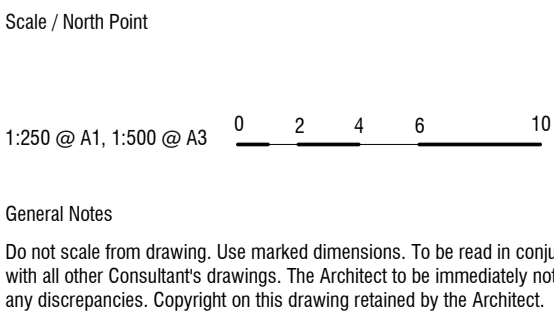


Rev	App	Ckd	Revision or reason for issue	Date	Legend
A	KT		Stage 2 DA DRAFT	29/06/18	
B	KT		Stage 2 DA DRAFT	03/07/18	
C	KT		Stage 2 DA	18/07/18	
D	KT		Stage 2 DA	01/08/18	
E	KT		Stage II SSDA	03/08/18	
F	KT		Stage II SSDA	22/08/18	

CSI Areas (not for approval)

CSI detail is indicative and subject to separate approval.

Final OSD detail on station levels is subject to issue of the relevant construction certificate and approved Station Design and Precinct Plan.



Notes

This architectural package describes the South Tower. Refer to Grimshaw for Metro and JPW for North Tower

Architect

GRIMSHAW

Grimshaw
Level 5, 333 George Street, Sydney
New South Wales 2000 Australia

Telephone + +61 2 9253 0200
Email info@grimshaw-architects.com

Authoring Organisation

tzannes

Tzannes
Level 5, 2-12 Foveaux Street, Surry Hills
New South Wales 2010 Australia

Telephone +61 2 9319 3744
Email tzannes@tzannes.com.au

Project Title

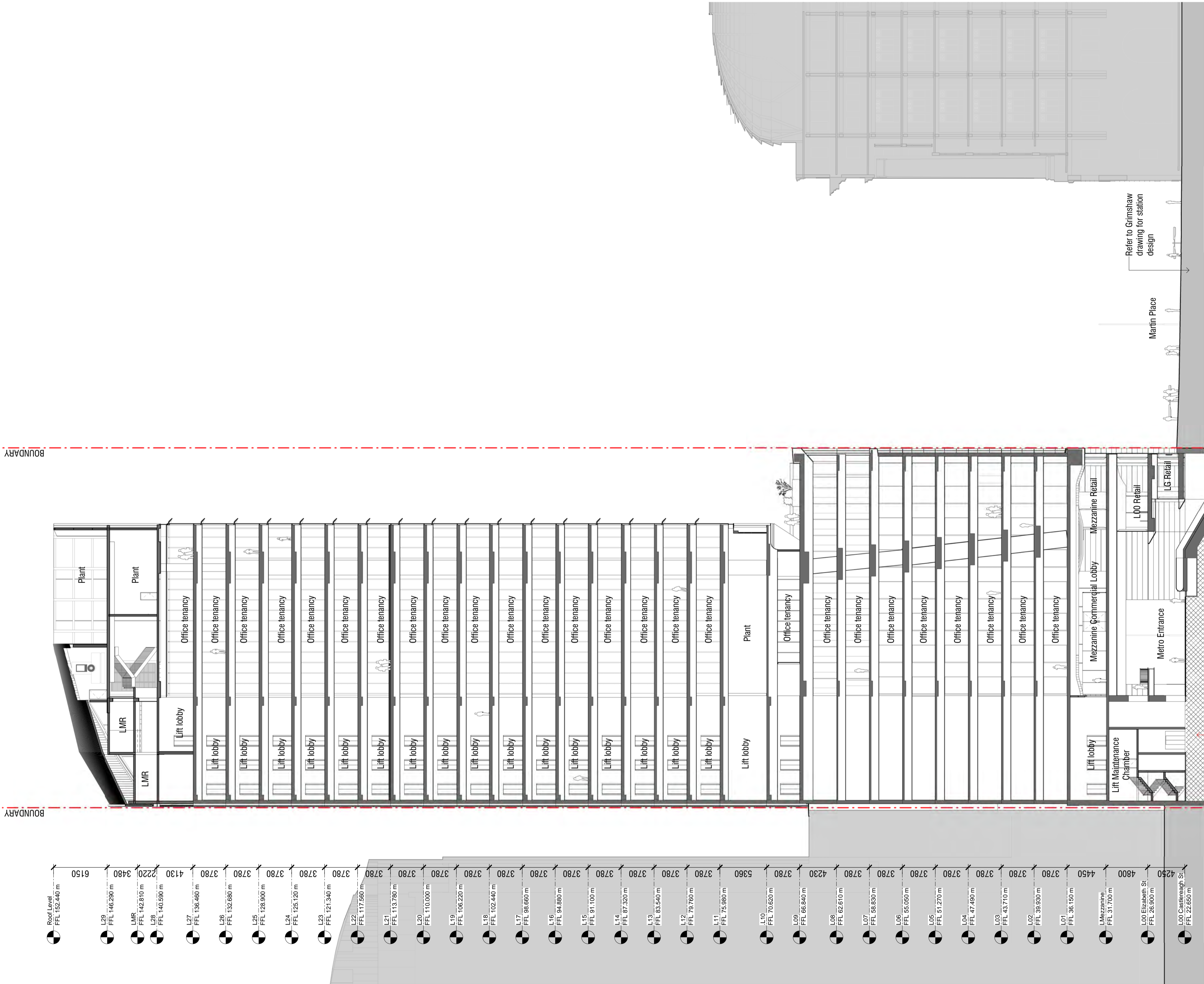
**SYDNEY METRO MARTIN PLACE
INTEGRATED STATION DEVELOPMENT**

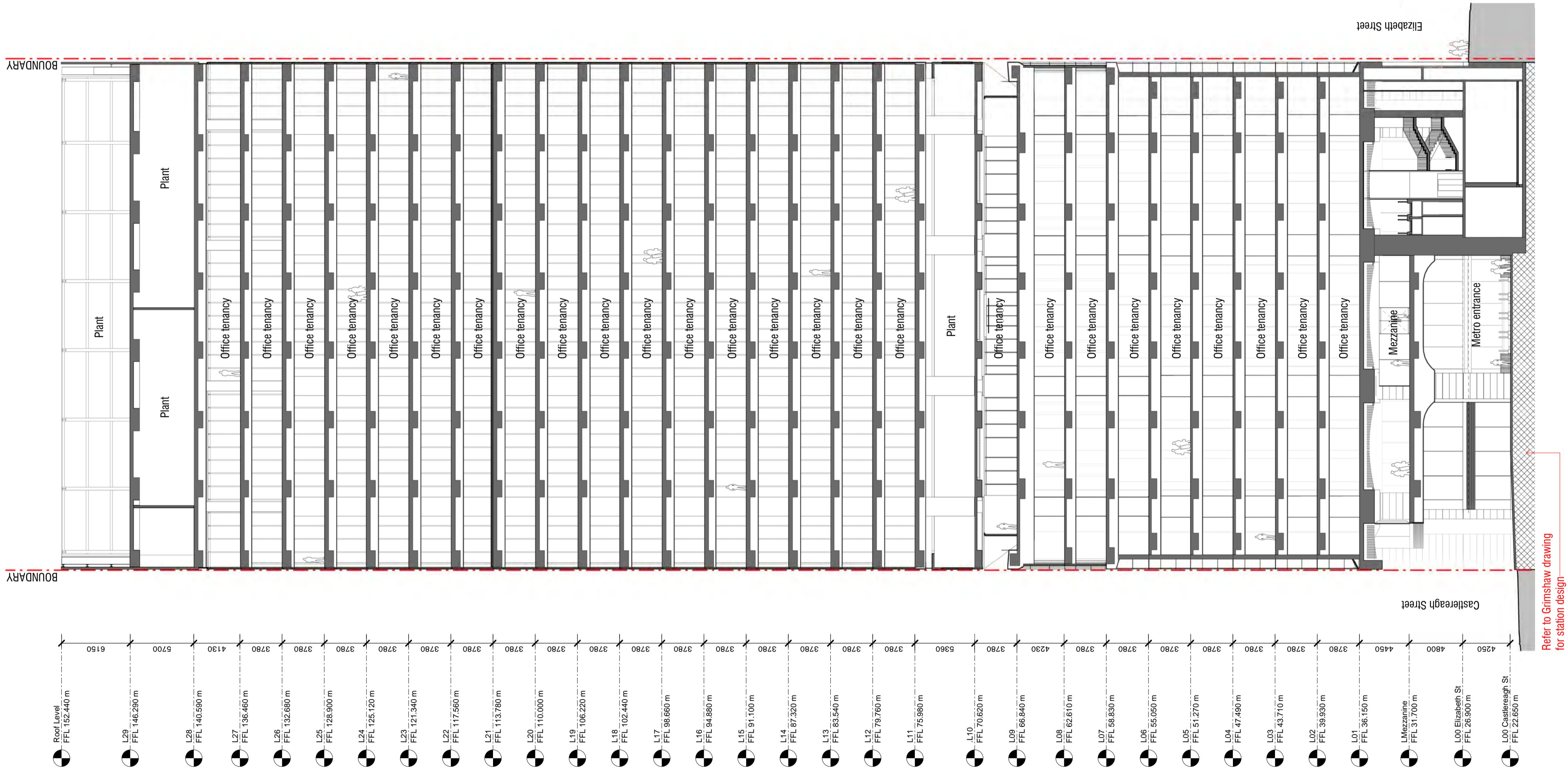
Client
Macquarie Group Ltd
50 Martin Place, Sydney
New South Wales 2000 Australia

Telephone +61 2 8232 3333
Email: www.macquarie.com

MACQUARIE BANK

Drawing Title	Status	Revision
Section - 01		
STAGE II SSDA		F
Drawing Number		
CSWSMP-MAC-SMS-AT-DRG-DA-500100		





Rev	App	Ckd	Revision or reason for issue	Date	Legend
A	KT		Stage 2 DA DRAFT	29/06/18	
B	KT		Stage 2 DA DRAFT	03/07/18	
C	KT		Stage 2 DA	18/07/18	
D	KT		Stage 2 DA	01/08/18	
E	KT		Stage II SSDA	03/08/18	
F	KT		Stage II SSDA	22/08/18	

CSSE Areas (not for approval)

CSSE detail is indicative and subject to separate approval.

Final OSD detail on station levels is subject to issue of the relevant construction certificate and approved Station Design and Precinct Plan.

Scale / North Point

1:250 @ A1, 1:500 @ A3

0 2 4 6 10

General Notes

Do not scale from drawing. Use marked dimensions. To be read in conjunction with all other Consultant's drawings. The Architect to be immediately notified of any discrepancies. Copyright on this drawing retained by the Architect.

Notes

This architectural package describes the South Tower. Refer to Grimshaw for Metro and JPW for North Tower

Architect

GRIMSHAW

Grimshaw
Level 2, 333 George Street, Sydney
New South Wales 2000 Australia

Telephone ++ +61 2 9253 0200
Email info@grimshaw-architects.com

Authoring Organisation

tzannes

Tzannes
Level 5, 2-12 Foveaux Street, Surry Hills
New South Wales 2010 Australia

Telephone +61 2 9319 3744
Email tzannes@tzannes.com.au

Project Title

**SYDNEY METRO MARTIN PLACE
INTEGRATED STATION DEVELOPMENT**

Client
Macquarie Group Ltd
50 Martin Place, Sydney
New South Wales 2000 Australia

Telephone +61 2 8232 3333
Email: www.macquarie.com

Drawing Title

Section - 02

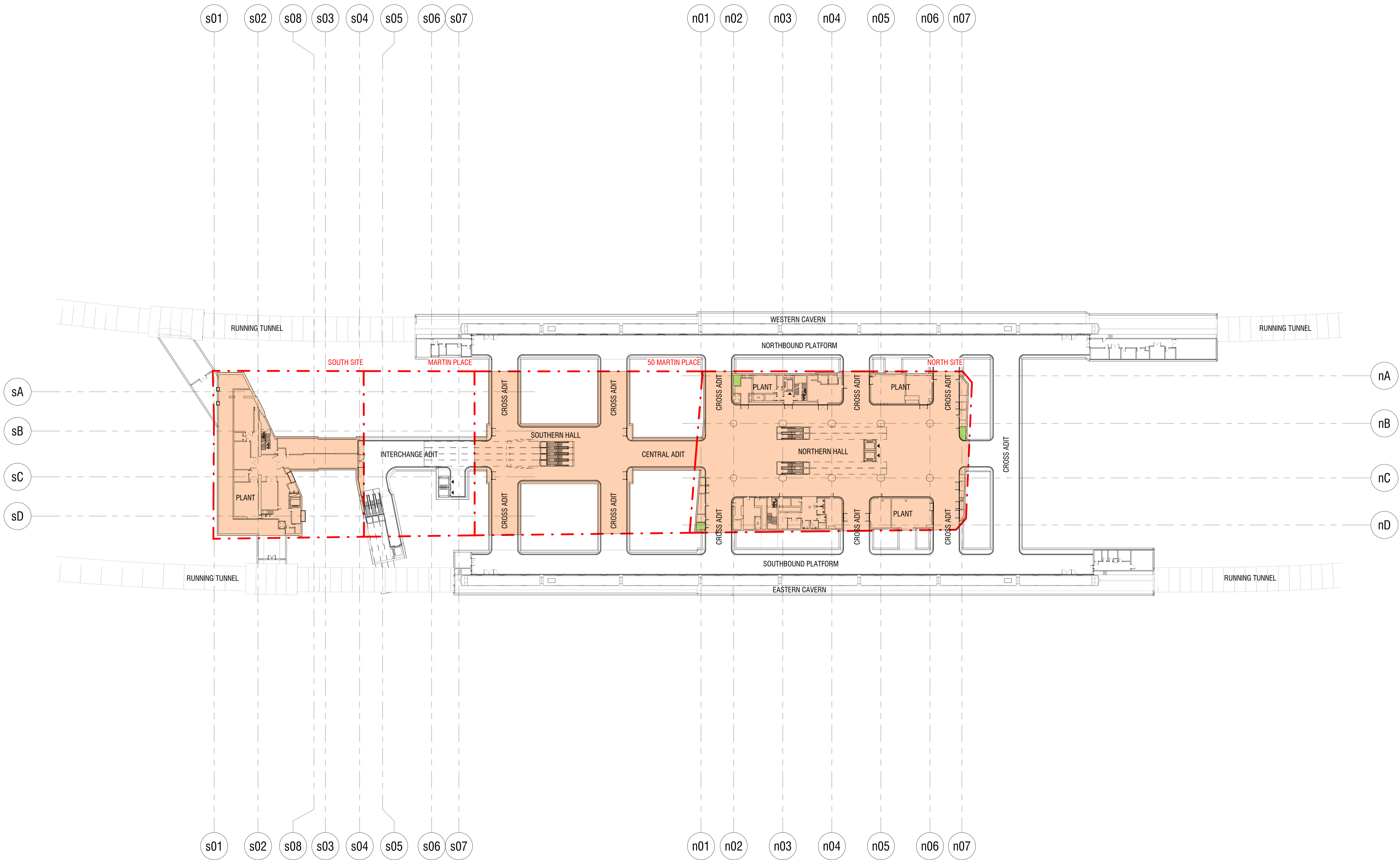
Status
STAGE II SSDA

Drawing Number
CSWSMP-MAC-SMS-AT-DRG-DA-500200

Revision
F

Drawing List — Demarcation Plans

Sheet Number	Sheet Name	Size	Scale	Revision
CSWSMP-MAC-SMA-AT-DRG-DA-000000	DEMARCATIION PLAN - COVER SHEET	A1	NTS	C
CSWSMP-MAC-SMA-AT-DRG-DA-398500	DEMARCATIION PLAN - B5 PLATFORM	A1	1:500	B
CSWSMP-MAC-SMA-AT-DRG-DA-398400	DEMARCATIION PLAN - B4 STATION PLANT	A1	1:500	B
CSWSMP-MAC-SMA-AT-DRG-DA-397010	DEMARCATIION PLAN - B4 MEZZANINE STATION PLANT	A1	1:500	B
CSWSMP-MAC-SMA-AT-DRG-DA-398300	DEMARCATIION PLAN - B3 PLANT / CONCOURSE	A1	1:500	B
CSWSMP-MAC-SMA-AT-DRG-DA-398200	DEMARCATIION PLAN - B2 LOWER CONCOURSE / EOTF	A1	1:500	B
CSWSMP-MAC-SMA-AT-DRG-DA-398100	DEMARCATIION PLAN - B1 UPPER CONCOURSE / SERVICE YARD	A1	1:500	B
CSWSMP-MAC-SMA-AT-DRG-DA-398000	DEMARCATIION PLAN - LOWER GROUND (CASTLEREAGH STREET)	A1	1:500	B
CSWSMP-MAC-SMA-AT-DRG-DA-390000	DEMARCATIION PLAN - GROUND FLOOR (ELIZABETH STREET)	A1	1:500	B
CSWSMP-MAC-SMA-AT-DRG-DA-396010	DEMARCATIION PLAN - MEZZANINE	A1	1:500	B
CSWSMP-MAC-SMA-AT-DRG-DA-390100	DEMARCATIION PLAN - LEVEL 01	A1	1:500	B
CSWSMP-MAC-SMA-AT-DRG-DA-390200	DEMARCATIION PLAN - LEVEL 02	A1	1:500	B
CSWSMP-MAC-SMA-AT-DRG-DA-390300	DEMARCATIION PLAN - LEVEL 03	A1	1:500	C
CSWSMP-MAC-SMA-AT-DRG-DA-390400	DEMARCATIION PLAN - LEVEL 04	A1	1:500	B
CSWSMP-MAC-SMA-AT-DRG-DA-390500	DEMARCATIION PLAN - LEVEL 05	A1	1:500	B
CSWSMP-MAC-SMA-AT-DRG-DA-390600	DEMARCATIION PLAN - LEVEL 06	A1	1:500	C
CSWSMP-MAC-SMA-AT-DRG-DA-390700	DEMARCATIION PLAN - LEVEL 07	A1	1:500	C
CSWSMP-MAC-SMA-AT-DRG-DA-159891	DEMARCATIION SECTION - N-S SECTION	A1	1:500	D



Rev	App	Ckd	Revision or reason for issue	Date	Notes
0	AC	MC	STAGE 1 SSDA	May 2017	This architectural package describes metro-related areas. Refer to Tzannes for South OSD and JPW for North OSD.
1	AC	MC	STAGE II SSDA - DRAFT ISSUE	29.06.2018	
2	AC	MC	STAGE II SSDA - DRAFT ISSUE	01.08.2018	CSSE detail is indicative and subject to separate approval.
3	AC	MC	STAGE II SSDA - DRAFT ISSUE (PRELIM)	09.08.2018	
4	AC	MC	STAGE II SSDA - DRAFT ISSUE	09.08.2018	Final OSD detail on station levels is subject to issue of the relevant construction certificate and approved Station Design and Precinct Plan.
A	AC	MC	STAGE II SSDA - DRAFT ISSUE	10.08.2018	
B	AC	MC	STAGE II SSDA	23.08.2018	Street trees, furniture, and other public domain elements within the precinct are indicative only and are subject to relevant approvals and detailed coordination with new and existing underground utilities and infrastructure.

Legend
--- SSD approval site boundary
 SSD Areas
 CSSE Areas
 Structure included as part of CSSE application, finishes and fitout included in SSD application

Scale / North Point

1:500 @ A1, 1:1000 @ A3

0 5 10 15 25

General Notes

Do not scale from drawing. Use marked dimensions. To be read in conjunction with all other Consultant's drawings. The Architect to be immediately notified of any discrepancies. Copyright on this drawing retained by the Architect.

Authoring Organisation

GRIMSHAW

Grimshaw
Level 2, 333 George Street, Sydney
New South Wales 2000 Australia

Telephone +61 2 9253 0200
Email info@grimshaw-architects.com

Architect

Tzannes

Tzannes
63 Myrtle Street, Chippendale
New South Wales 2008 Australia

Telephone +61 2 9319 3744
Email tzannes@tzannes.com.au

Architect

JPW/ JOHNSON PILTON WALKER

Johnson Pilton Walker Pty Ltd ACN 095 778 886
Level 10 Plaza Building Australia Square 95 Pitt Street Sydney
New South Wales 2000 Australia

Telephone +61 2 9259 5900
Email jpww@jpww.com.au

Project Title

SYDNEY METRO MARTIN PLACE - integrated station development



Client
Macquarie Group Ltd
50 Martin Place, Sydney
New South Wales 2000 Australia

Telephone +61 2 8232 3333
Email www.macquarie.com

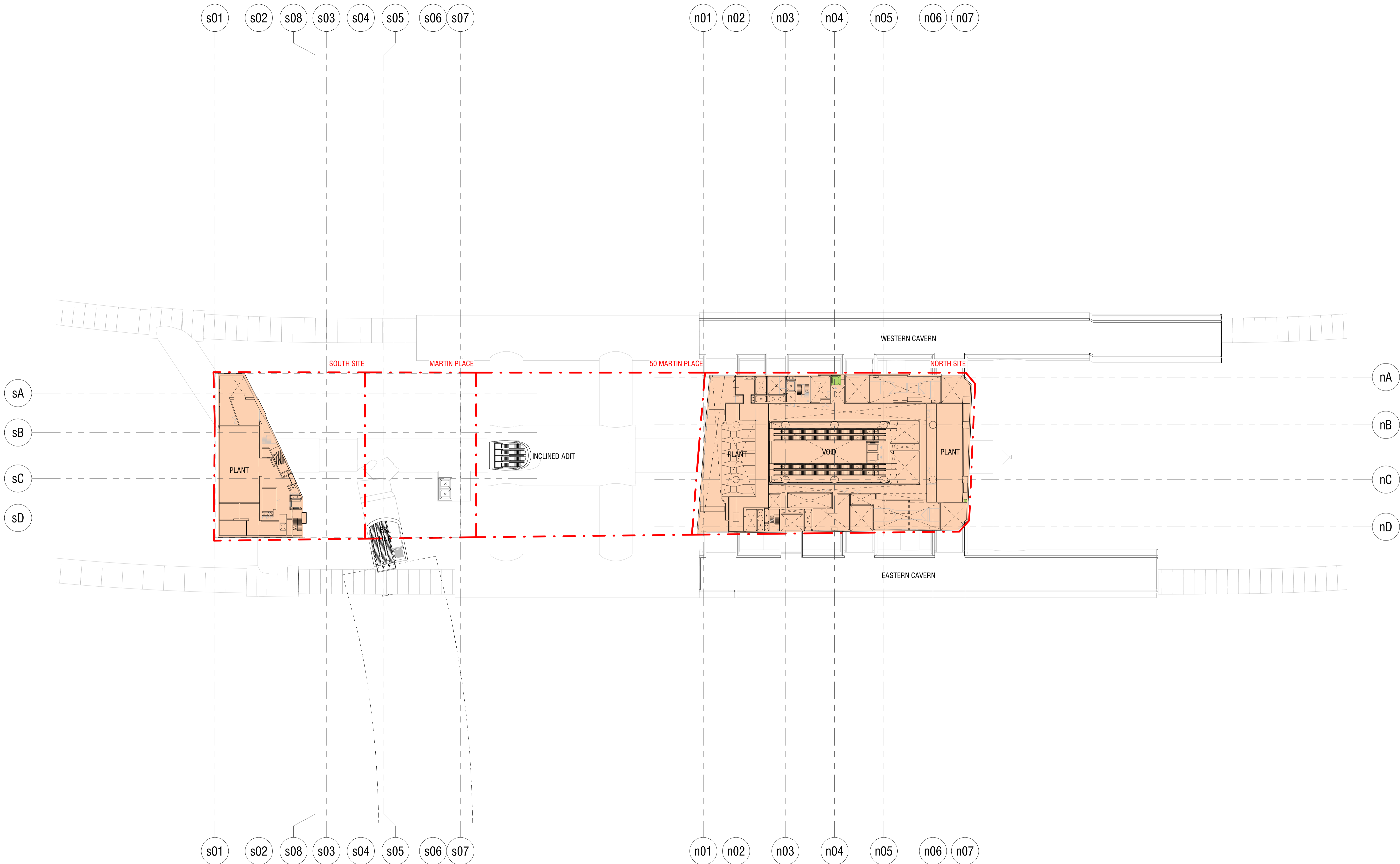
Drawing Title

B5 PLATFORM DEMARCATON PLAN

Status
STAGE II SSDA

Drawing Number
CSWSMP- MAC- SMA- AT- DRG- DA- 398500 _B

Revision
B



Rev	App	Ckd	Revision or reason for issue	Date	Notes
0	AC	MC	STAGE 1 SSDA	May 2017	This architectural package describes metro-related areas. Refer to Tzannes for South OSD and JPW for North OSD.
1	AC	MC	STAGE II SSDA - DRAFT ISSUE	29.06.2018	
2	AC	MC	STAGE II SSDA - DRAFT ISSUE	01.08.2018	CSSE detail is indicative and subject to separate approval.
3	AC	MC	STAGE II SSDA - DRAFT ISSUE (PRELIM)	09.08.2018	
4	AC	MC	STAGE II SSDA - DRAFT ISSUE	09.08.2018	Final OSD detail on station levels is subject to issue of the relevant construction certificate and approved Station Design and Precinct Plan.
A	AC	MC	STAGE II SSDA - DRAFT ISSUE	10.08.2018	
B	AC	MC	STAGE II SSDA	23.08.2018	Street trees, furniture, and other public domain elements within the precinct are indicative only and are subject to relevant approvals and detailed coordination with new and existing underground utilities and infrastructure.

Legend
--- SSD approval site boundary
 SSD Areas
 CSSE Areas
 Structure included as part of CSSE application, finishes and fitout included in SSD application

Scale / North Point

1:500 @ A1, 1:1000 @ A3

0 5 10 15 25

General Notes

Do not scale from drawing. Use marked dimensions. To be read in conjunction with all other Consultant's drawings. The Architect to be immediately notified of any discrepancies. Copyright on this drawing retained by the Architect.

Authoring Organisation

GRIMSHAW

Grimshaw
Level 2, 333 George Street, Sydney
New South Wales 2000 Australia

Telephone +61 2 9253 0200
Email info@grimshaw-architects.com

Architect

Tzannes

Tzannes
63 Myrtle Street, Chippendale
New South Wales 2008 Australia

Telephone +61 2 9319 3744
Email tzannes@tzannes.com.au

Architect

**JPW/
JOHNSON PILTON WALKER**

Johnson Pilton Walker Pty Ltd ACN 095 778 886
Level 10 Plaza Building Australia Square 95 Pitt Street Sydney
New South Wales 2000 Australia

Telephone +61 2 9259 5900
Email jpww@jpww.com.au

Project Title

**SYDNEY METRO MARTIN PLACE -
integrated station development**


MACQUARIE BANK

Client
Macquarie Group Ltd
50 Martin Place, Sydney
New South Wales 2000 Australia

Telephone +61 2 8232 3333
Email: www.macquarie.com

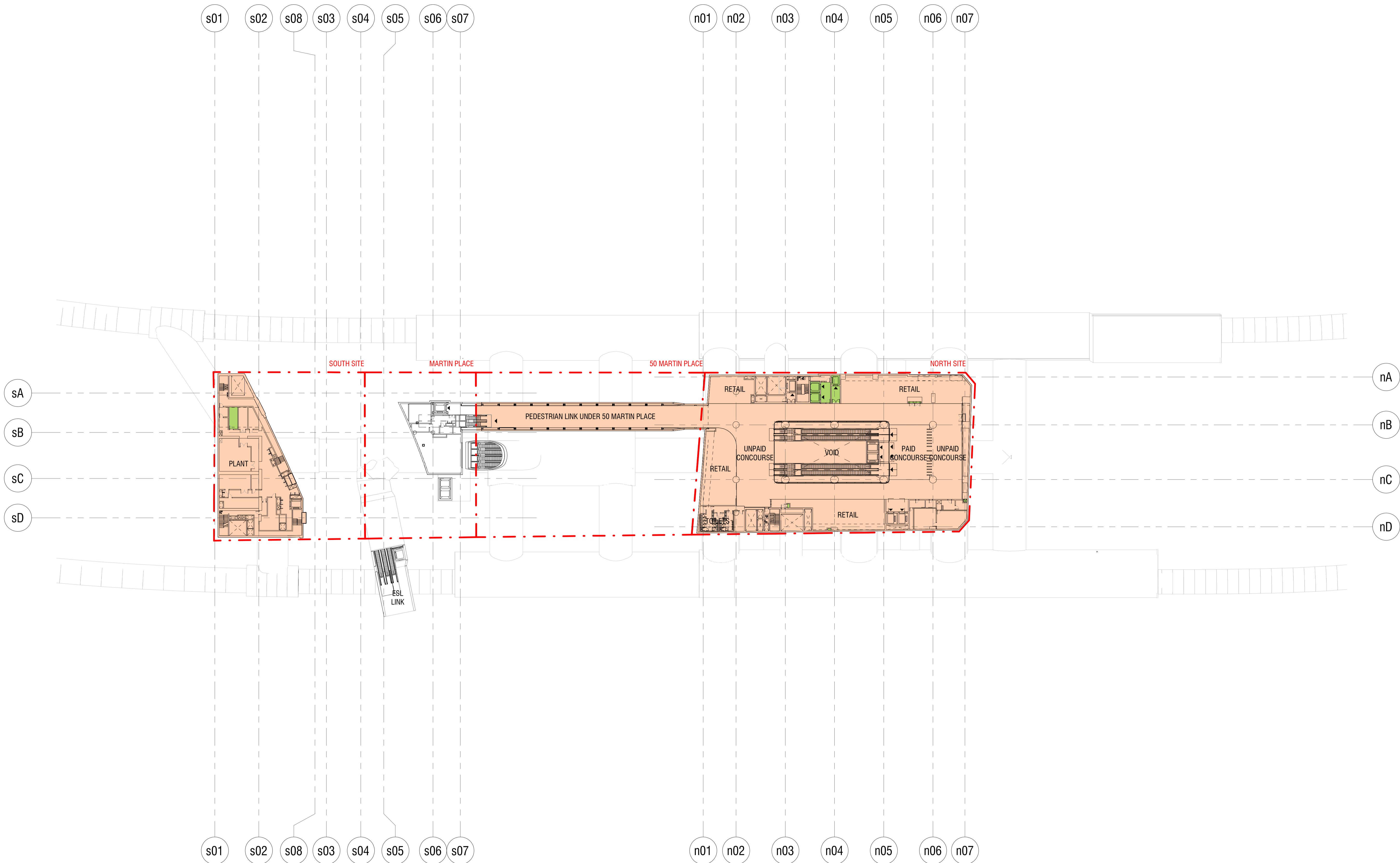
Drawing Title

**B4 MEZZANINE STATION PLANT
DEMARICATION PLAN**

Status
STAGE II SSDA

Drawing Number
CSWSMP- MAC- SMA- AT- DRG- DA- 397010 _B

Revision
B



Rev	App	Ckd	Revision or reason for issue	Date	Notes
0	AC	MC	STAGE 1 SSDA	May 2017	This architectural package describes metro-related areas. Refer to Tranzes for South OSD and JPW for North OSD.
1	AC	MC	STAGE II SSDA - DRAFT ISSUE	29.06.2018	
2	AC	MC	STAGE II SSDA - DRAFT ISSUE	01.08.2018	CSII detail is indicative and subject to separate approval.
3	AC	MC	STAGE II SSDA - DRAFT ISSUE (PRELIM)	09.08.2018	
4	AC	MC	STAGE II SSDA - DRAFT ISSUE	09.08.2018	Final OSD detail on station levels is subject to issue of the relevant construction certificate and approved Station Design and Precinct Plan.
A	AC	MC	STAGE II SSDA - DRAFT ISSUE	10.08.2018	
B	AC	MC	STAGE II SSDA	23.08.2018	Street trees, furniture, and other public domain elements within the precinct are indicative only and are subject to relevant approvals and detailed coordination with new and existing underground utilities and infrastructure.

Legend
- - - SSD approval site boundary
 SSD Areas
 CSII Areas
 Structure included as part of CSII application, finishes and fitout included in SSD application

Scale / North Point

1:500 @ A1, 1:1000 @ A3

0 5 10 15 25

General Notes

Do not scale from drawing. Use marked dimensions. To be read in conjunction with all other Consultant's drawings. The Architect to be immediately notified of any discrepancies. Copyright on this drawing retained by the Architect.

Authoring Organisation

GRIMSHAW

Grimshaw
Level 2, 333 George Street, Sydney
New South Wales 2000 Australia

Telephone +61 2 9253 0200
Email info@grimshaw-architects.com

Architect

Tzannes

Tzannes
63 Myrtle Street, Chippendale
New South Wales 2008 Australia

Telephone +61 2 9319 3744
Email tzannes@tzannes.com.au

Architect

**JPW
JOHNSON PILTON WALKER**

Johnson Pilton Walker Pty Ltd ACN 095 778 886
Level 10 Plaza Building Australia Square 95 Pitt Street Sydney
New South Wales 2000 Australia

Telephone +61 2 9259 5900
Email jpjw@jpjw.com.au

Project Title

**SYDNEY METRO MARTIN PLACE -
integrated station development**

Client
Macquarie Group Ltd
50 Martin Place, Sydney
New South Wales 2000 Australia

Telephone +61 2 8232 3333
Email: www.macquarie.com

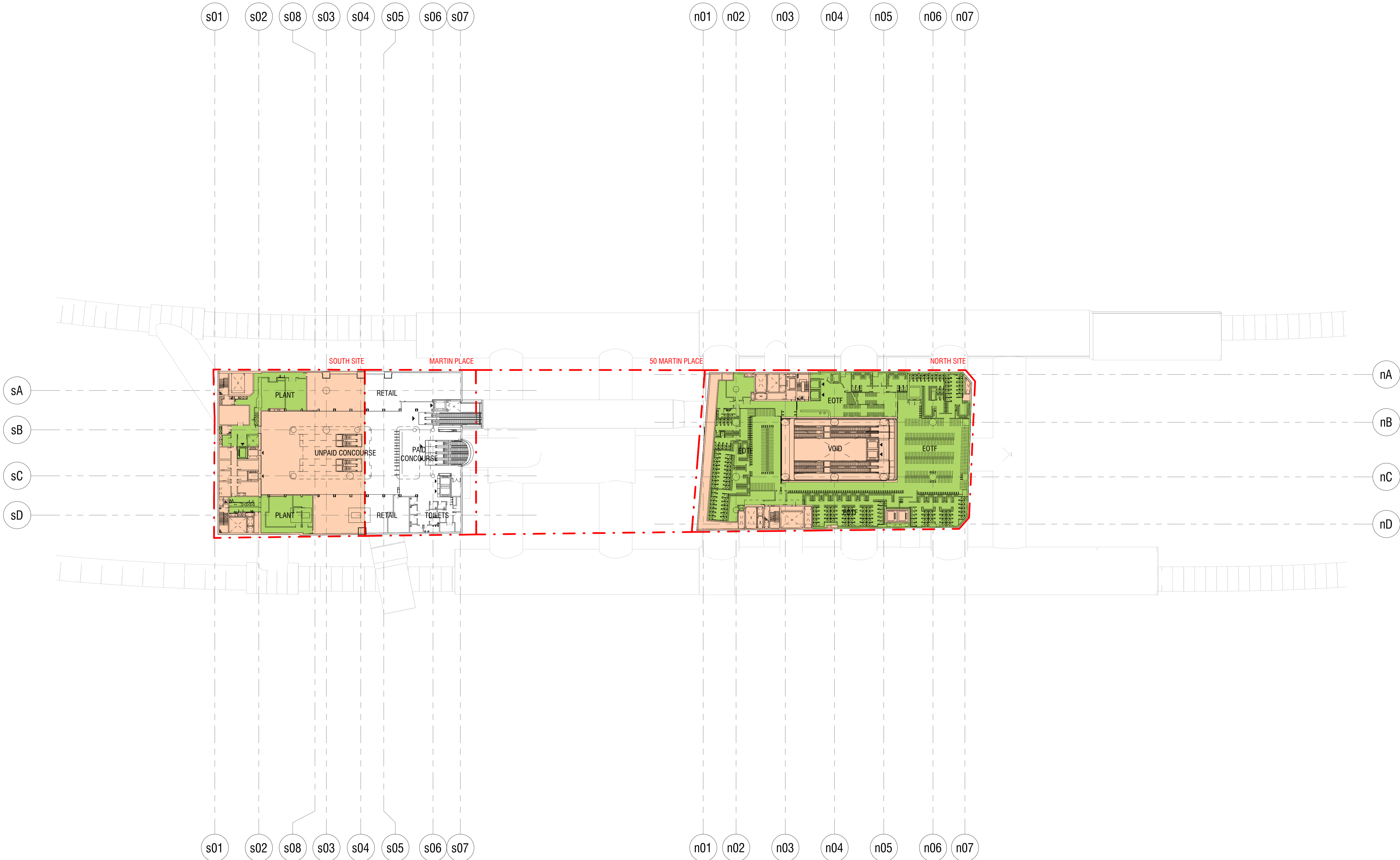
Drawing Title

**B3 PLANT / CONCOURSE
DEMARICATION PLAN**

Status
STAGE II SSDA

Drawing Number
CSWSMP- MAC- SMA- AT- DRG- DA- 398300 _B

Revision
B



Rev	App	Ckd	Revision or reason for issue	Date	Notes
0	AC	MC	STAGE 1 SSDA	May 2017	This architectural package describes metro-related areas. Refer to Tzannes for South OSD and JPW for North OSD.
1	AC	MC	STAGE II SSDA - DRAFT ISSUE	29.06.2018	
2	AC	MC	STAGE II SSDA - DRAFT ISSUE	01.08.2018	CSST detail is indicative and subject to separate approval.
3	AC	MC	STAGE II SSDA - DRAFT ISSUE (PRELIM)	09.08.2018	
4	AC	MC	STAGE II SSDA - DRAFT ISSUE	09.08.2018	Final OSD detail on station levels is subject to issue of the relevant construction certificate and approved Station Design and Precinct Plan.
A	AC	MC	STAGE II SSDA - DRAFT ISSUE	10.08.2018	
B	AC	MC	STAGE II SSDA	23.08.2018	Street trees, furniture, and other public domain elements within the precinct are indicative only and are subject to relevant approvals and detailed coordination with new and existing underground utilities and infrastructure.

Legend
SSD approval site boundary
SSD Areas
CSST Areas
Structure included as part of CSST application, finishes and fitout included in SSD application

Scale / North Point
1:500 @ A1, 1:1000 @ A3
0 5 10 15 25
General Notes
Do not scale from drawing. Use marked dimensions. To be read in conjunction with all other Consultant's drawings. The Architect to be immediately notified of any discrepancies. Copyright on this drawing retained by the Architect.

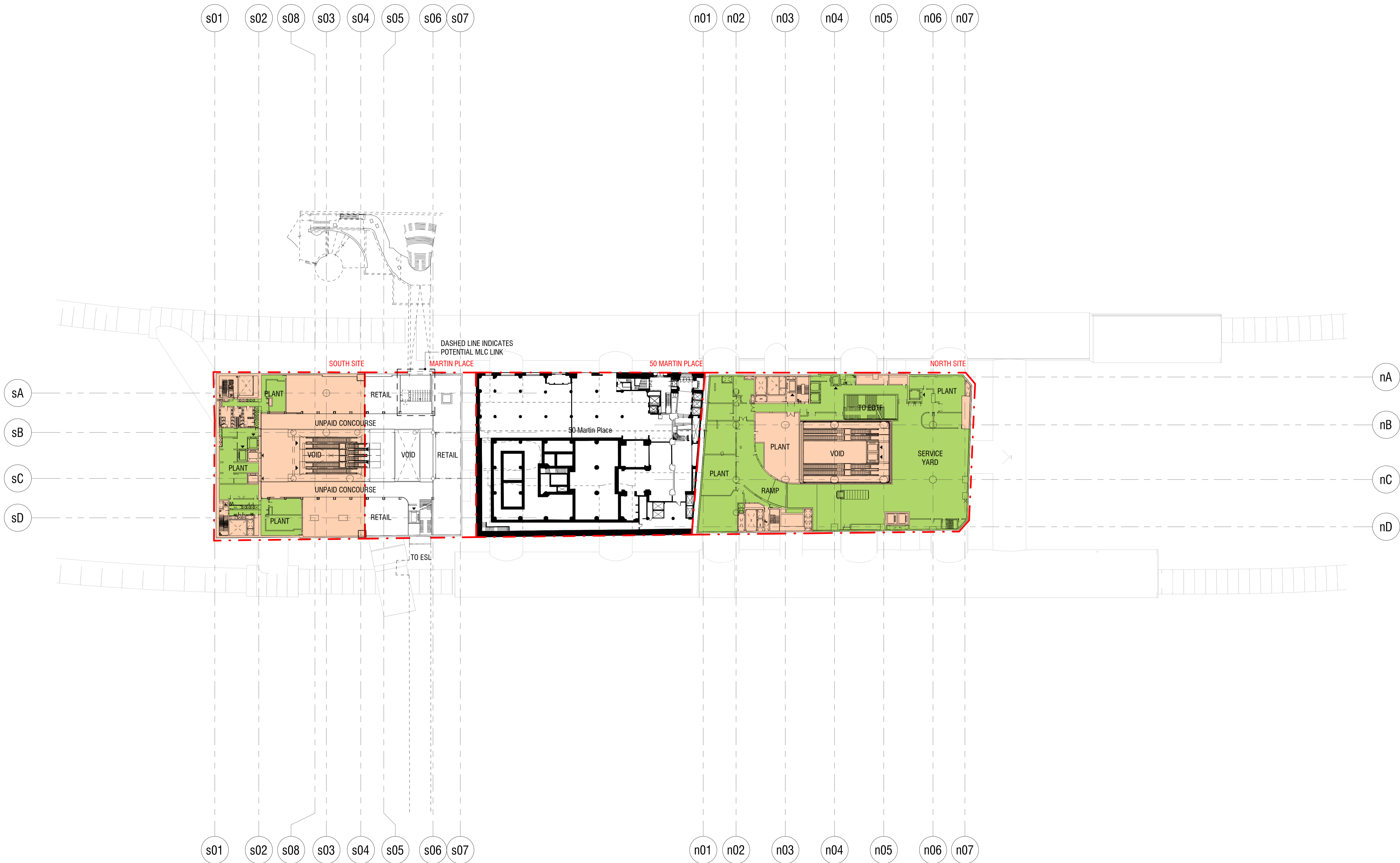
Authoring Organisation
GRIMSHAW
Grimshaw Level 2, 333 George Street, Sydney New South Wales 2000 Australia
Telephone +61 2 9253 0200 Email info@grimshaw-architects.com

Architect
Tzannes
Tzannes 63 Myrtle Street, Chippendale New South Wales 2008 Australia
Telephone +61 2 9319 3744 Email tzannes@tzannes.com.au

Architect
JPW JOHNSON PILTON WALKER
Johnson Pilton Walker Pty Ltd ACN 095 778 886 Level 10 Plaza Building Australia Square 95 Pitt Street Sydney New South Wales 2000 Australia
Telephone +61 2 9259 5900 Email jpjw@jpjw.com.au

Project Title
SYDNEY METRO MARTIN PLACE - integrated station development
Client Macquarie Group Ltd 50 Martin Place, Sydney New South Wales 2000 Australia
Telephone +61 2 8232 3333 Email: www.macquarie.com

Drawing Title
B2 LOWER CONCOURSE / END OF TRIP FACILITIES DEMARCATION PLAN
Status STAGE II SSDA
Drawing Number CSWSMP- MAC- SMA- AT- DRG- DA- 398200 _B
Revision B

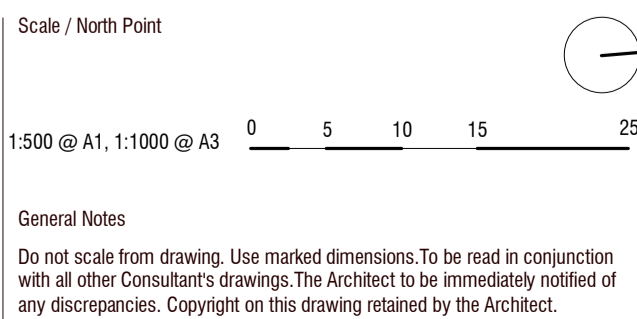






Rev	App	Ckd	Revision or reason for issue	Date	Notes
0	AC	MC	STAGE 1 SSDA	May 2017	This architectural package describes metro-related areas. Refer to Trammes for South OSD and JPW for North OSD.
1	AC	MC	STAGE II SSDA - DRAFT ISSUE	29.06.2018	CSI detail is indicative and subject to separate approval.
2	AC	MC	STAGE II SSDA - DRAFT ISSUE	01.08.2018	
3	AC	MC	STAGE II SSDA - DRAFT ISSUE (PRELIM)	09.08.2018	
4	AC	MC	STAGE II SSDA - DRAFT ISSUE	09.08.2018	Final OSD detail on station levels is subject to issue of the relevant construction certificate and approved Station Design and Precinct Plan.
A	AC	MC	STAGE II SSDA - DRAFT ISSUE	10.08.2018	
B	AC	MC	STAGE II SSDA	23.08.2018	Street trees, furniture, and other public domain elements within the precinct are indicative only and are subject to relevant approvals and detailed coordination with new and existing underground utilities and infrastructure.

Legend
SSD approval site boundary
SSD Areas
CSI Areas
Structure included as part of CSI application, finishes and fitout included in SSD application



Authoring Organisation

GRIMSHAW

Grimshaw
Level 2, 333 George Street, Sydney
New South Wales 2000 Australia
Telephone +61 2 9253 0200
Email info@grimshaw-architects.com

Architect

Tzannes

Tzannes
63 Myrtle Street, Chippendale
New South Wales 2008 Australia
Telephone +61 2 9319 3744
Email tzannes@tzannes.com.au

Architect

**JPW
JOHNSON PILTON WALKER**

Johnson Pilton Walker Pty Ltd ACN 095 778 886
Level 10 Plaza Building Australia Square 95 Pitt Street Sydney
New South Wales 2000 Australia
Telephone +61 2 9259 5900
Email jpjw@jpjw.com.au

Project Title

**SYDNEY METRO MARTIN PLACE -
integrated station development**

Client
Macquarie Group Ltd
50 Martin Place, Sydney
New South Wales 2000 Australia
Telephone +61 2 8232 3333
Email: www.macquarie.com

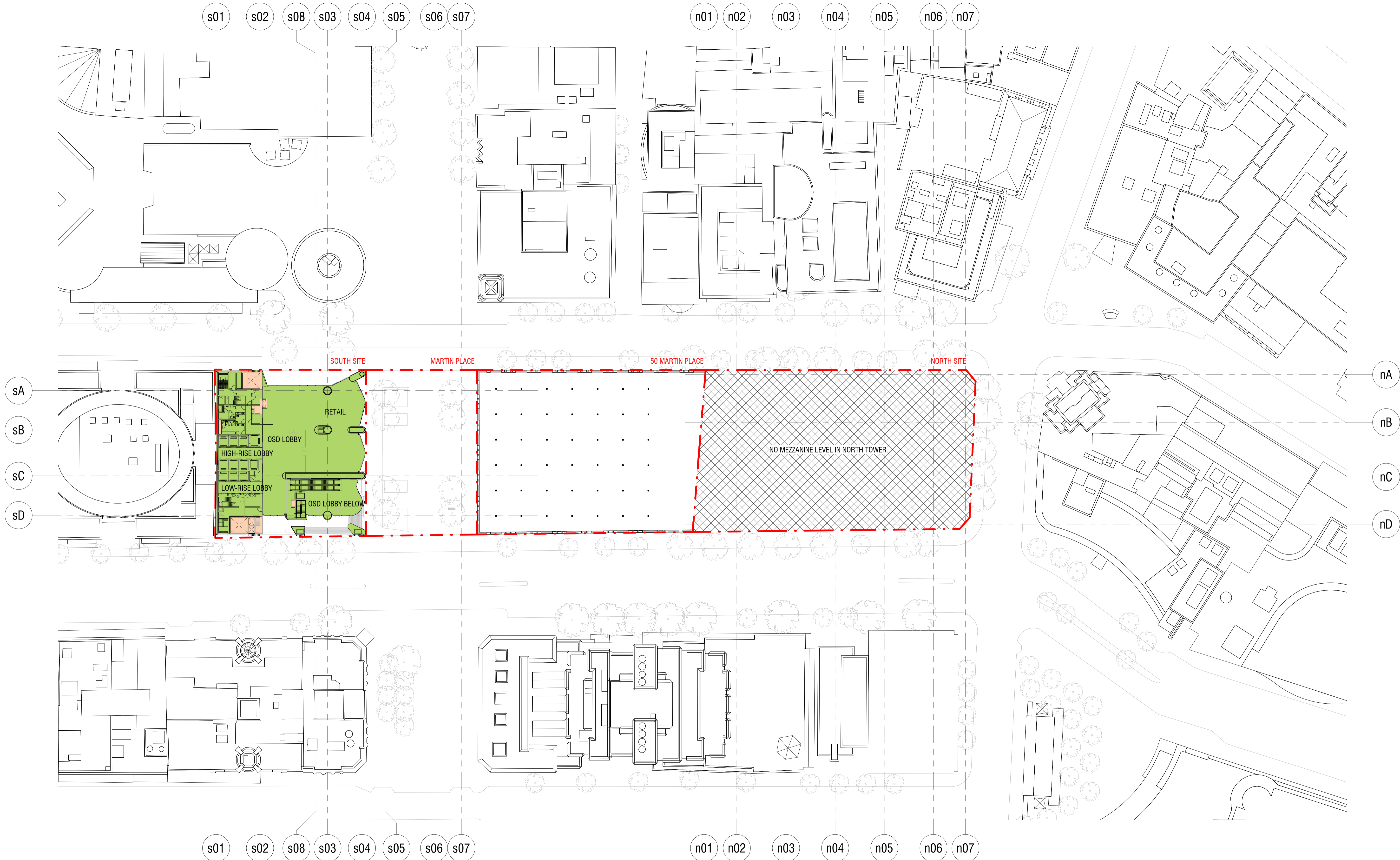
Drawing Title

**GROUND FLOOR (ELIZABETH
STREET) DEMARCATION PLAN**

Status
STAGE II SSDA

Drawing Number
CSWSMP- MAC- SMA- AT- DRG- DA- 390000_B

Revision
B



Rev	App	Ckd	Revision or reason for issue	Date	Notes
0	AC	MC	STAGE I SSDA	May 2017	This architectural package describes metro-related areas. Refer to Tzannes for South OSD and JPW for North OSD.
1	AC	MC	STAGE II SSDA - DRAFT ISSUE	29.06.2018	
2	AC	MC	STAGE II SSDA - DRAFT ISSUE	01.08.2018	CSI detail is indicative and subject to separate approval.
3	AC	MC	STAGE II SSDA - DRAFT ISSUE (PRELIM)	09.08.2018	
4	AC	MC	STAGE II SSDA - DRAFT ISSUE	09.08.2018	Final OSD detail on station levels is subject to issue of the relevant construction certificate and approved Station Design and Precinct Plan.
A	AC	MC	STAGE II SSDA - DRAFT ISSUE	10.08.2018	
B	AC	MC	STAGE II SSDA	23.08.2018	Street trees, furniture, and other public domain elements within the precinct are indicative only and are subject to relevant approvals and detailed coordination with new and existing underground utilities and infrastructure.

This architectural package describes metro-related areas. Refer to Tzannes for South OSD and JPW for North OSD.

CSI detail is indicative and subject to separate approval.

Final OSD detail on station levels is subject to issue of the relevant construction certificate and approved Station Design and Precinct Plan.

Street trees, furniture, and other public domain elements within the precinct are indicative only and are subject to relevant approvals and detailed coordination with new and existing underground utilities and infrastructure.

- Legend
- SSD approval site boundary
 - SSD Areas
 - CSI Areas
 - Structure included as part of CSI application, finishes and fitout included in SSD application

Scale / North Point

1:500 @ A1, 1:1000 @ A3

0 5 10 15 25

General Notes

Do not scale from drawing. Use marked dimensions. To be read in conjunction with all other Consultant's drawings. The Architect to be immediately notified of any discrepancies. Copyright on this drawing retained by the Architect.

Authoring Organisation

GRIMSHAW

Grimshaw
Level 2, 333 George Street, Sydney
New South Wales 2000 Australia

Telephone +61 2 9253 0200
Email info@grimshaw-architects.com

Architect

Tzannes

Tzannes
63 Myrtle Street, Chippendale
New South Wales 2000 Australia

Telephone +61 2 9319 3744
Email tzannes@tzannes.com.au

Architect

**JPW
JOHNSON PILTON WALKER**

Johnson Pilton Walker Pty Ltd ACN 095 778 886
Level 10 Plaza Building Australia Square 95 Pitt Street Sydney
New South Wales 2000 Australia

Telephone +61 2 9259 5900
Email jpww@jpww.com.au

Project Title

**SYDNEY METRO MARTIN PLACE -
integrated station development**

Client
Macquarie Group Ltd
50 Martin Place, Sydney
New South Wales 2000 Australia

Telephone +61 2 8232 3333
Email: www.macquarie.com



Drawing Title

MEZZANINE DEMARCATION PLAN

Status
STAGE II SSDA

Drawing Number
CSWSMP- MAC- SMA- AT- DRG- DA- 396010_B

Revision
B