

SSDA Condition B13

- (a) Integration of public art
- (b) Infrastructure to support public activation
- (c) Function and entry experience
- (d) Safety Provisions
- (e) Level of design finish

4

OSD North Tower

SSDA Condition B13

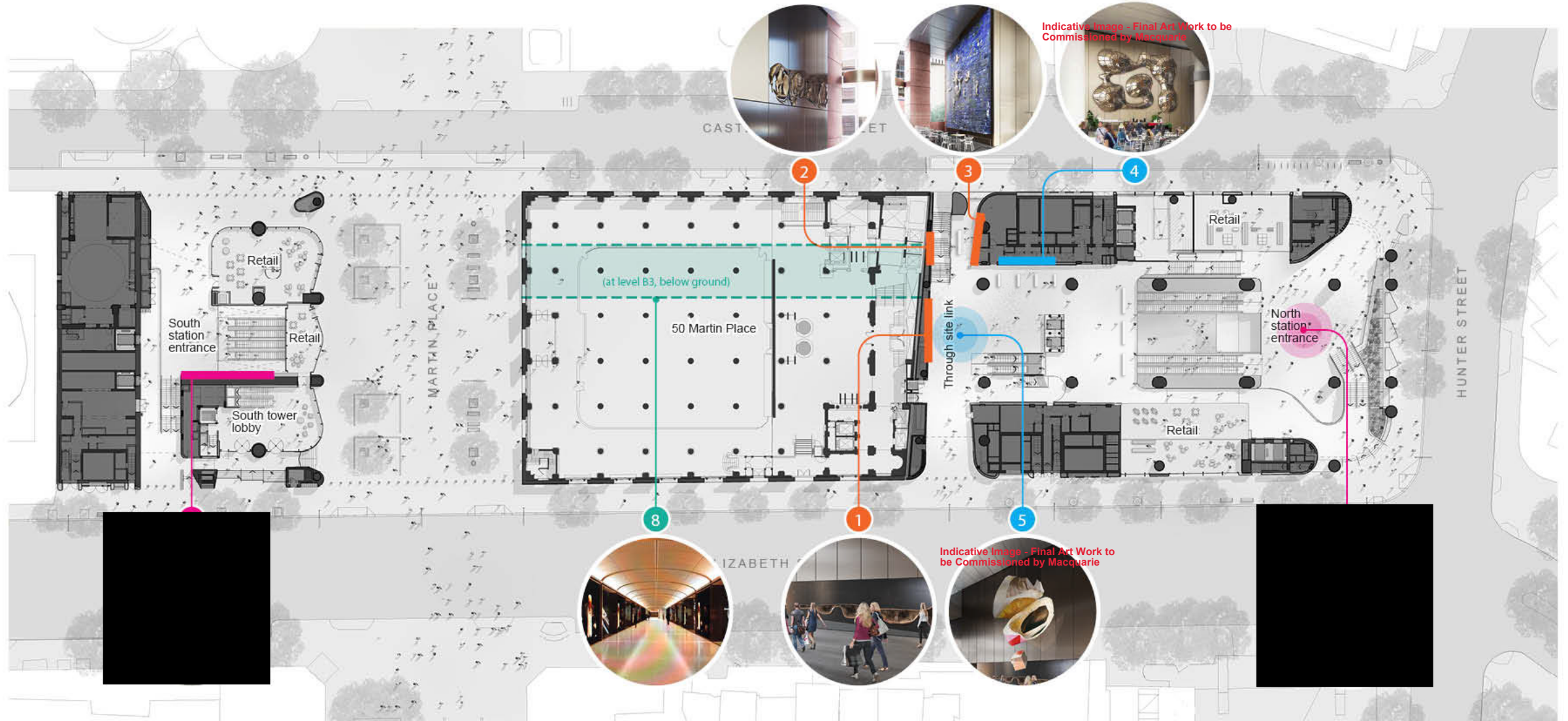
- (a) Integration of public art
- (b) Infrastructure to support public activation
- (c) Function and entry experience
- (d) Safety Provisions
- (e) Level of design finish

Public Art Location plan

- | | | | | | |
|---|-----------------------------------|---|-----------------------------------|---|---|
| 1 | Tom Bass - P&O fountain | 4 | Claire Healy, Sean Cordeiro | | |
| 2 | Douglas Annand - Bronze sculpture | 5 | Mikala Dwyer - Shelter of Hollows | | |
| 3 | Douglas Annand - Mural | | | 8 | Pedestrian link - digital artwork opportunity |

Colour key

- Metro-commissioned artwork
- Macquarie-commissioned artwork
- Heritage artwork
- Digital artwork opportunity



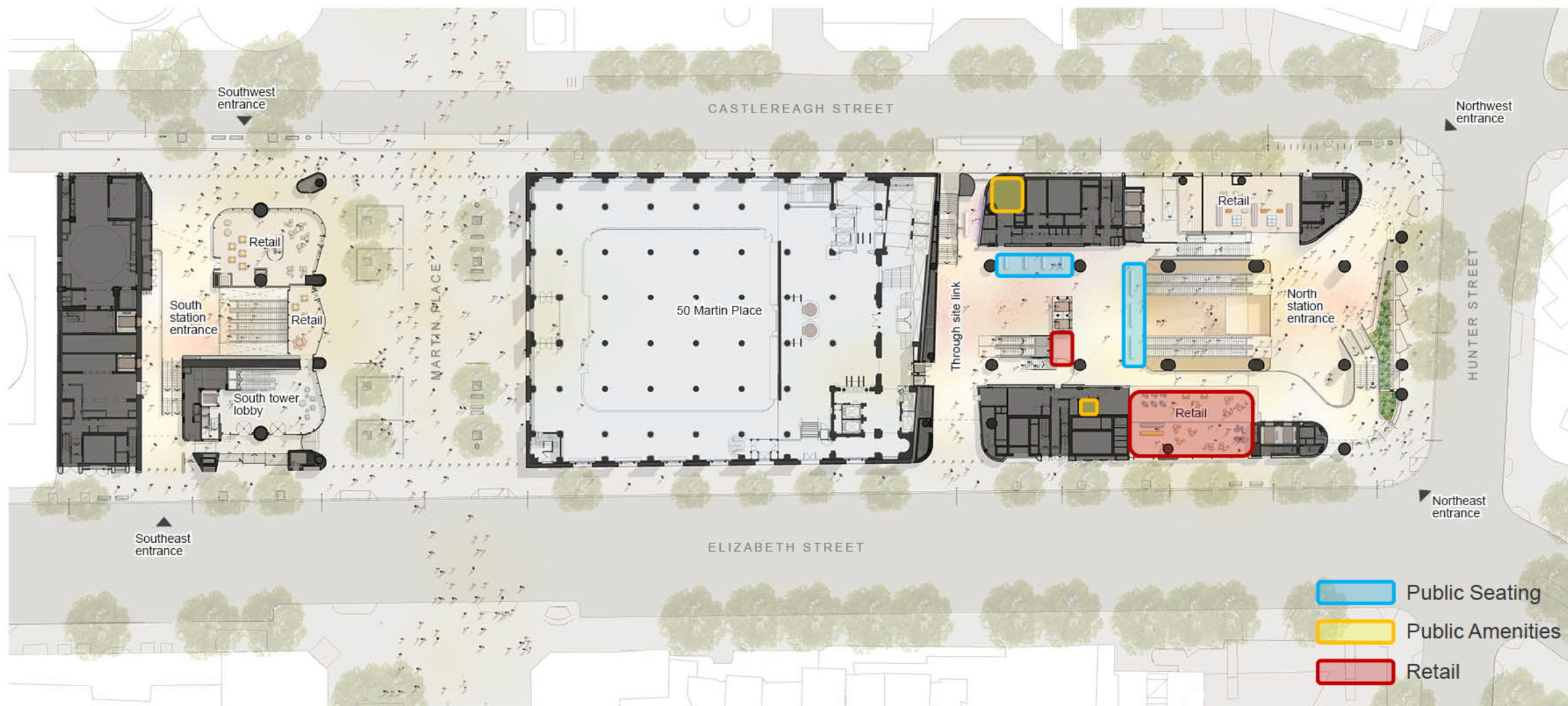
4

OSD North Tower

SSDA Condition B13

- (a) Integration of public art
- (b) Infrastructure to support public activation
- (c) Function and entry experience
- (d) Safety Provisions
- (e) Level of design finish

Infrastructure to support public activation Plan



Infrastructure to support public activation Plan

Notes

- 11,600 people/hour at AM peak
- Fixed Seating
- Retail
- Public Wifi
- Drinking fountain
- Charging Points for phone/ laptops
- Public Amenities
 - Ground
 - 2 x Accessible WC (1 staff)
 - 1 x Gender Inclusive WC
 - Parents Room
 - Lower Ground

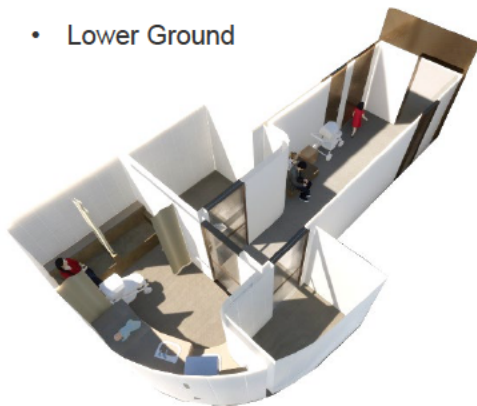
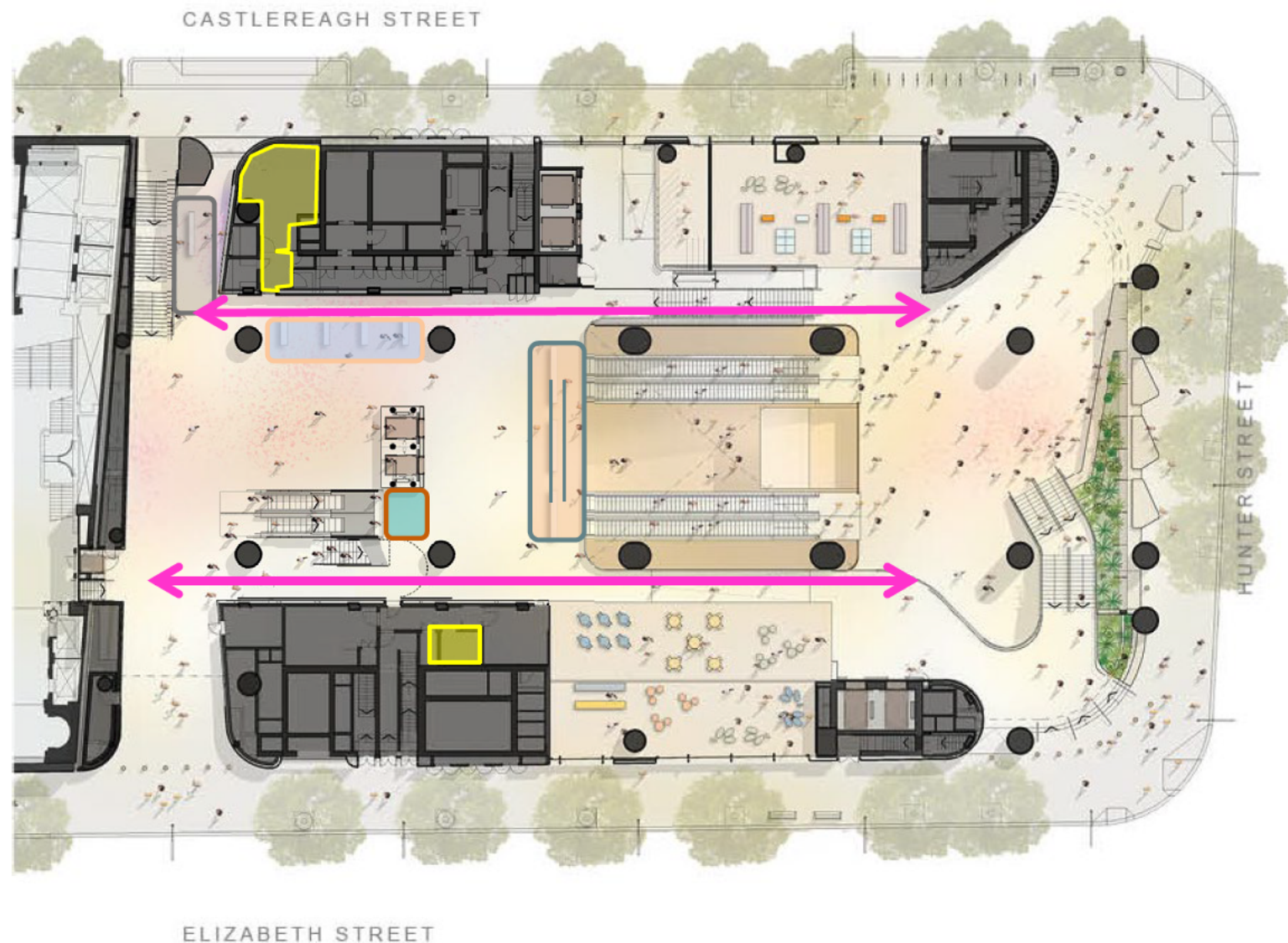


Image above: Isometric view of Public Amenities area



4

OSD North Tower

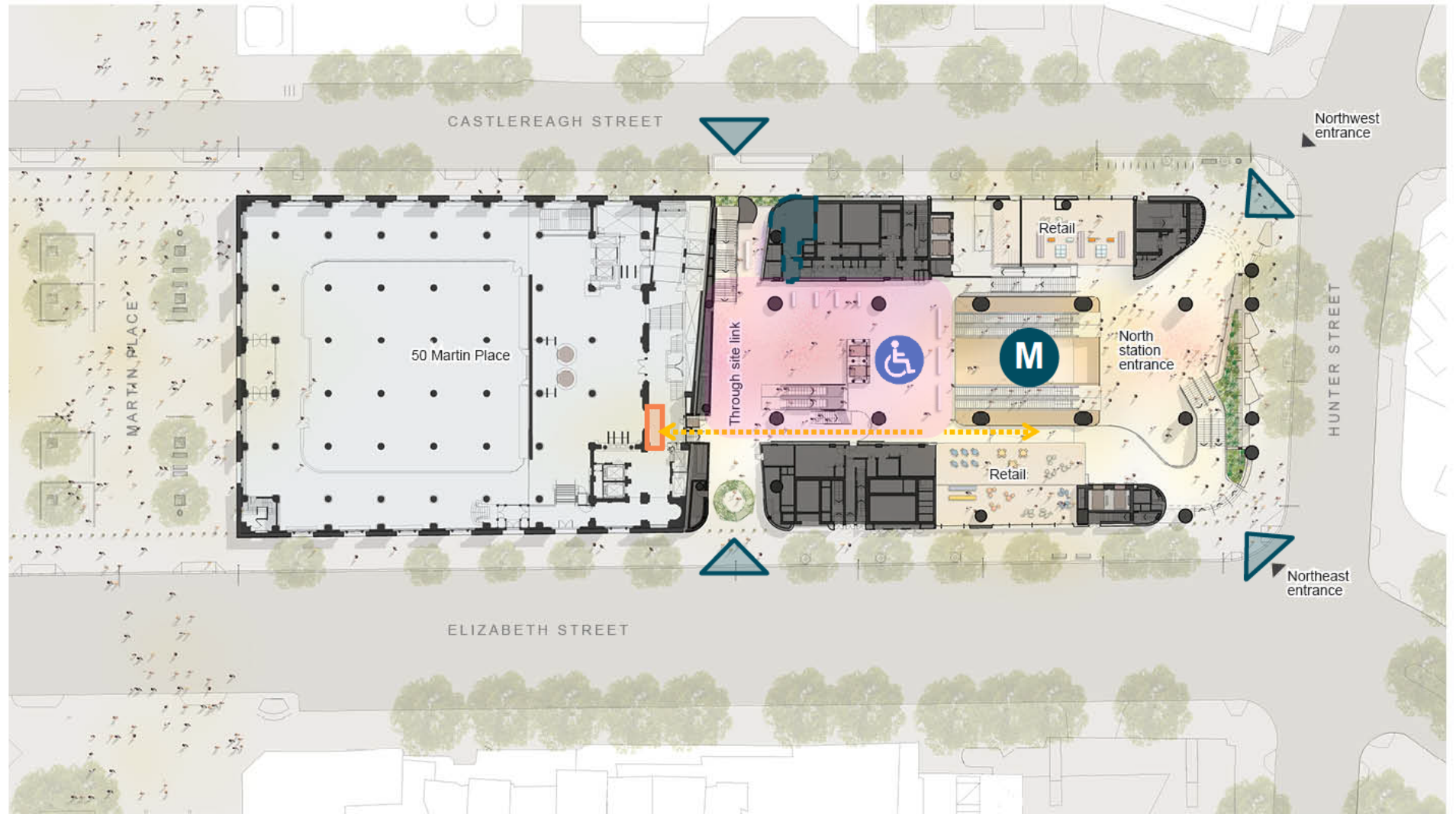
SSDA Condition B13

- (a) Integration of public art
- (b) Infrastructure to support public activation
- (c) Function and entry experience
- (d) Safety Provisions
- (e) Level of design finish

Function and entry experience Plan

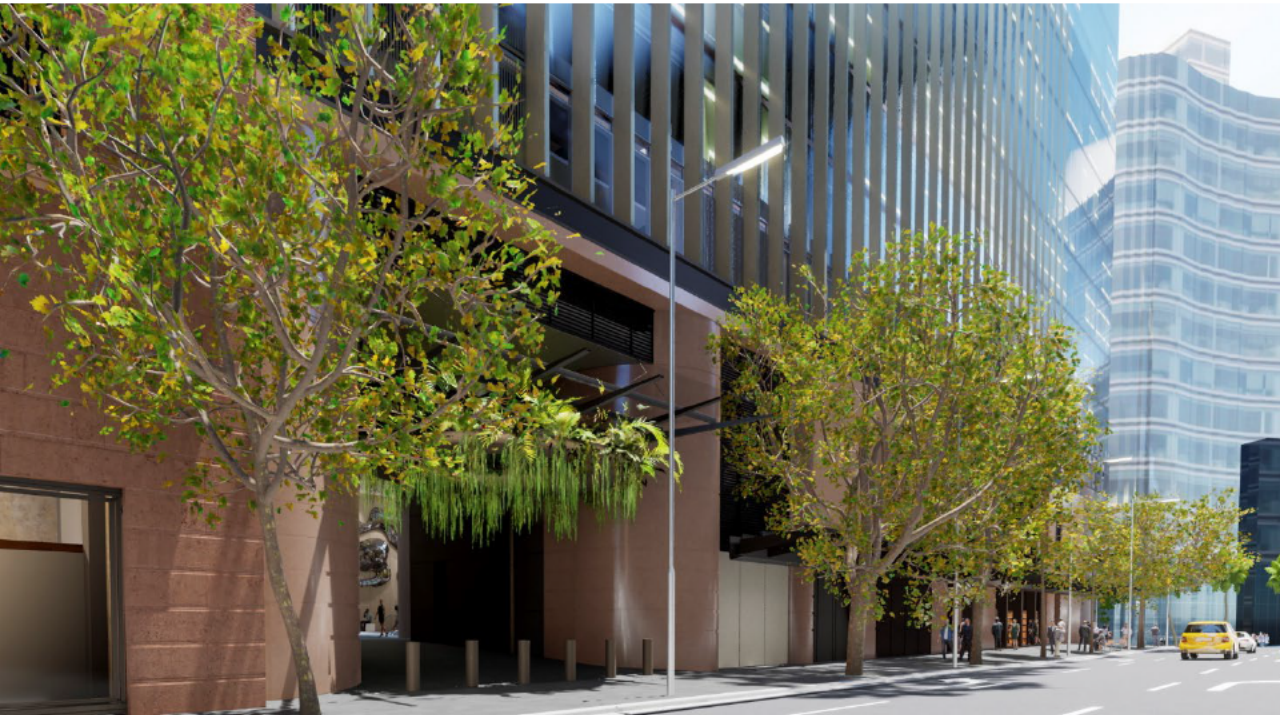
Notes

- Defined portals to signify OSD entry vs Station
- Intuitive wayfinding /visual cues
- Building address signage
- Landscaping at entries
- Transparency of Lift Lobby
- Upspec'ing of finishes to delineate building from street ie. Wall finish and paving design



Function and entry experience

Elizabeth St



Indicative render only



Function and entry experience

Castlereagh St



Indicative render only



4

OSD North Tower

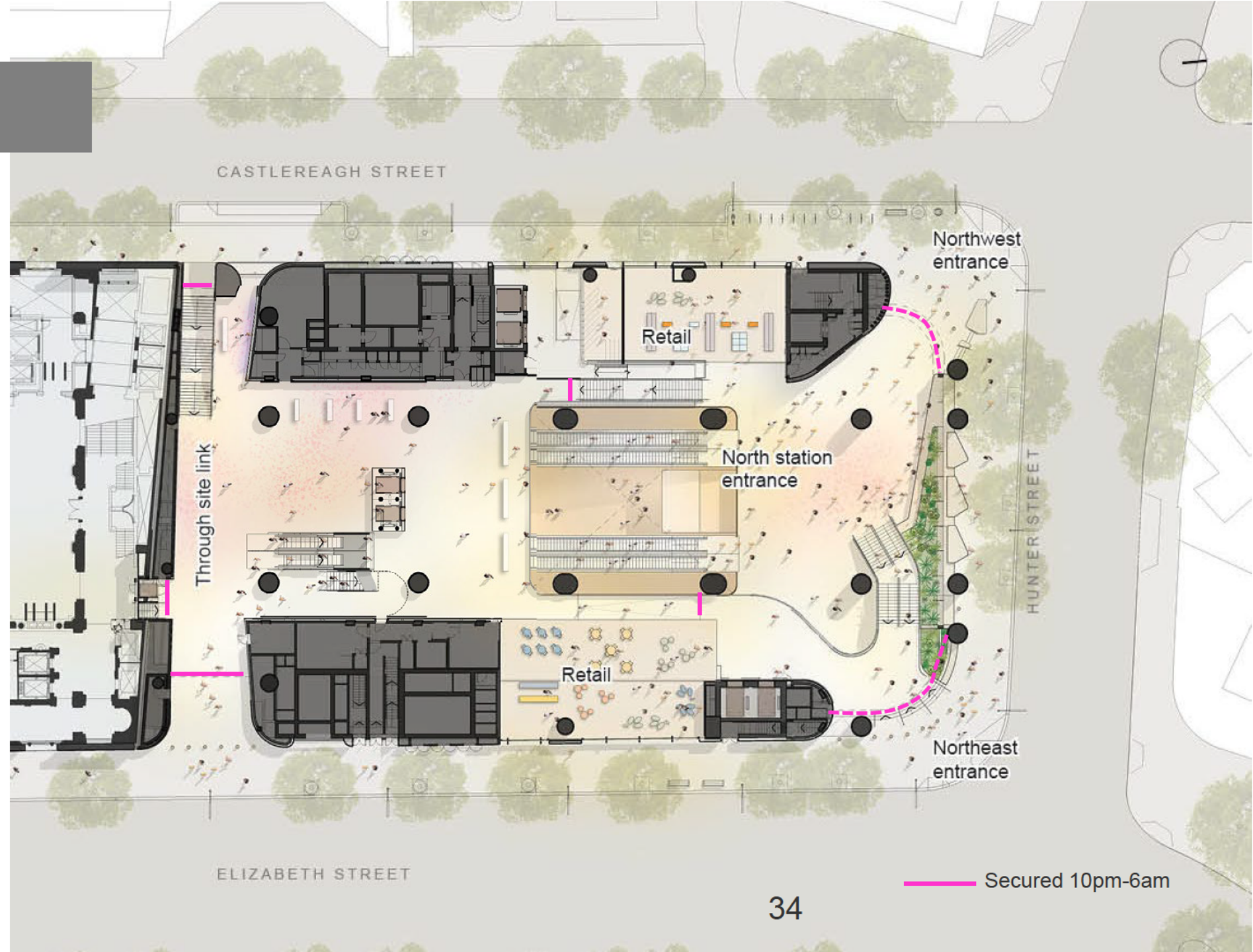
SSDA Condition B13

- (a) Integration of public art
- (b) Infrastructure to support public activation
- (c) Function and entry experience
- (d) **Safety Provisions**
- (e) Level of design finish

Safety Provisions Security

Notes

- Security Shutters
- After-hours Access (10pm-6am)
- Sight lines, viewpoints
- CCTV
- Public Space
- Openness, natural light
- Lighting
- Balustrade 1500mm high
- Blast enhancements



4

OSD North Tower

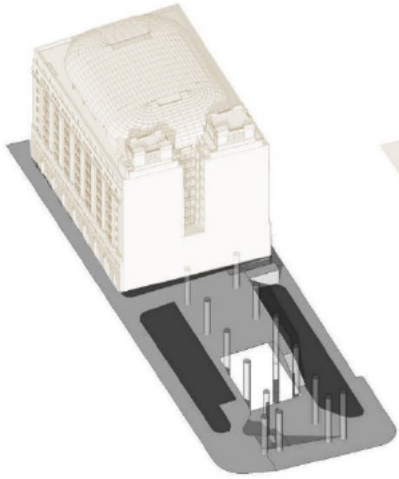
SSDA Condition B13

- (a) Integration of public art
- (b) Infrastructure to support public activation
- (c) Function and entry experience
- (d) Safety Provisions
- (e) Level of design finish

Level of design finish

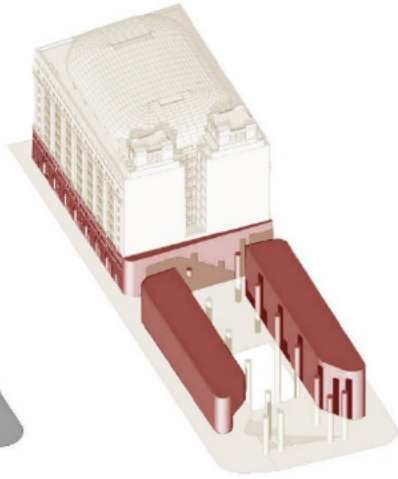
Finishes Strategy

- Warm Materials
- Natural reflections to ceiling to maximise natural light
- Warm Lighting



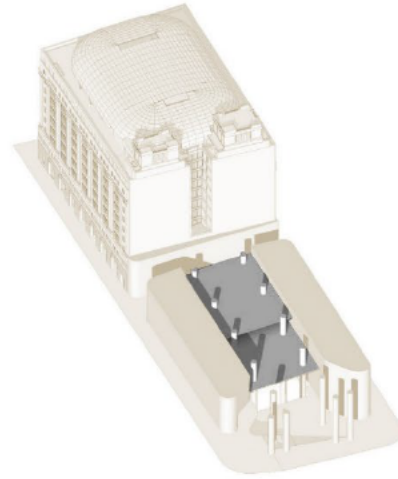
1. GROUND PLANE

AUSTRAL BLACK GRANITE
'EXTENSION OF THE PUBLIC DOMAIN'



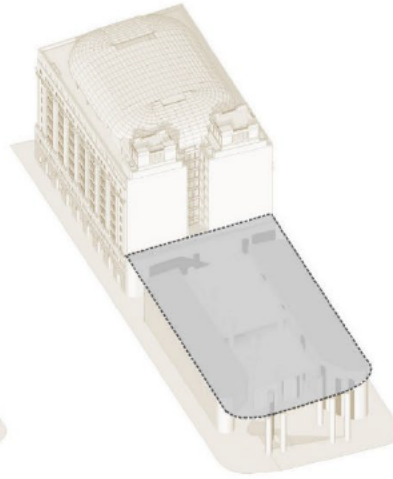
2. LOZENGES

"STREET WALL"
GRANITE + BRONZE
TONED PODIUM

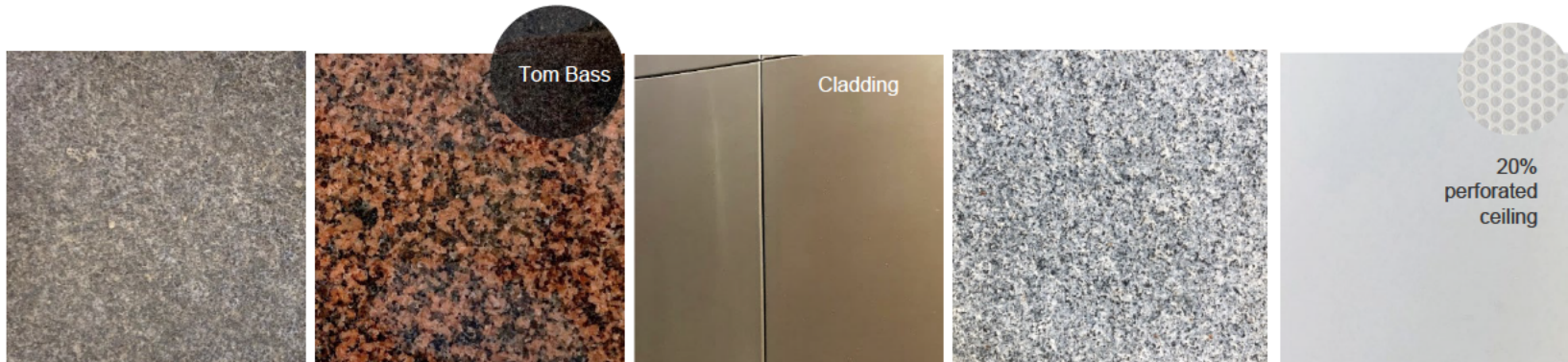


3. BRIDGES/FLOOR LEVELS

"SUSPENDED PLANKS"
'SILVER' ALUMINIUM



4. SOFFIT



Level of design finish

Finishes Strategy

- Bronze Patina Finish Samples

