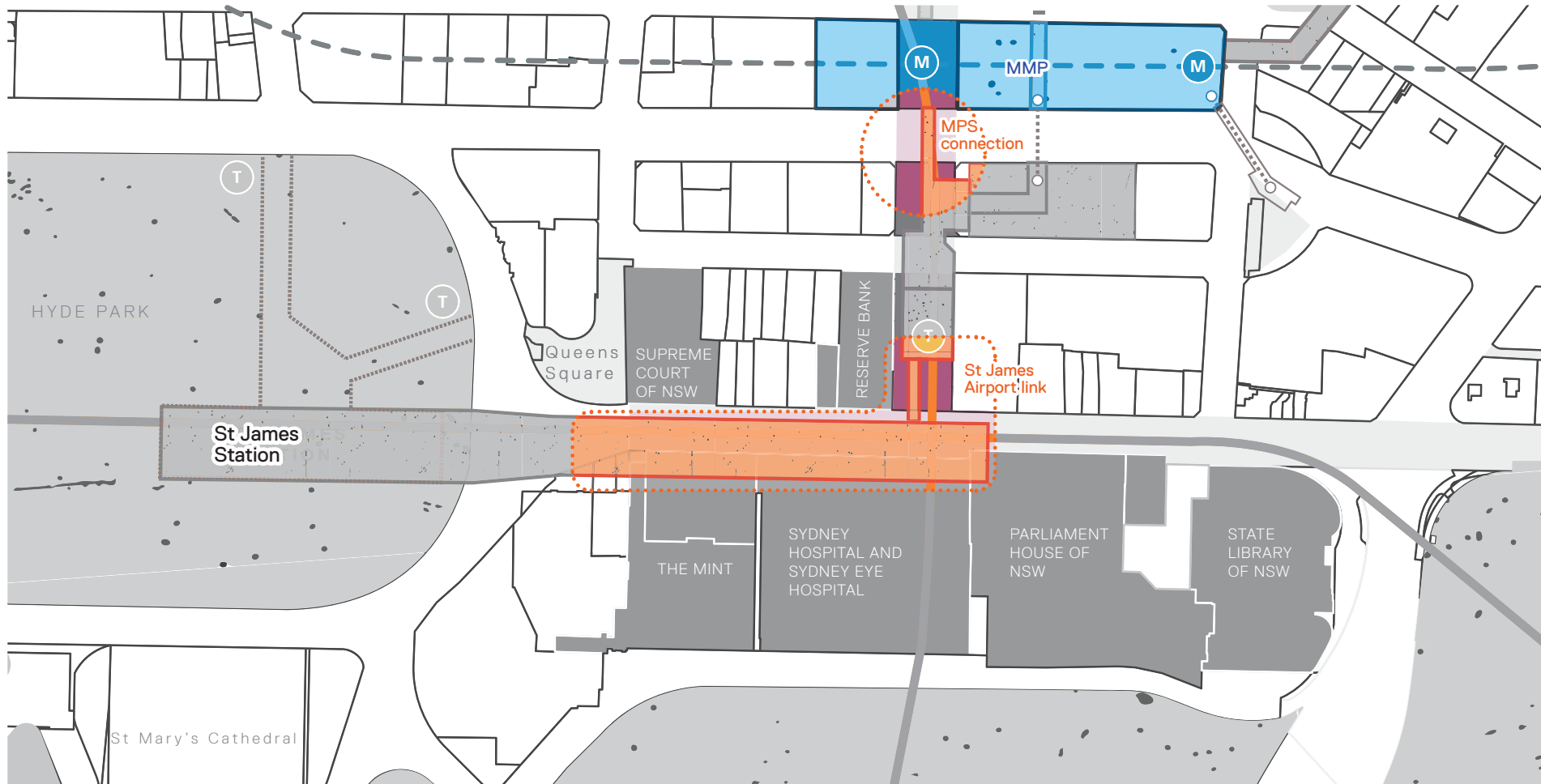


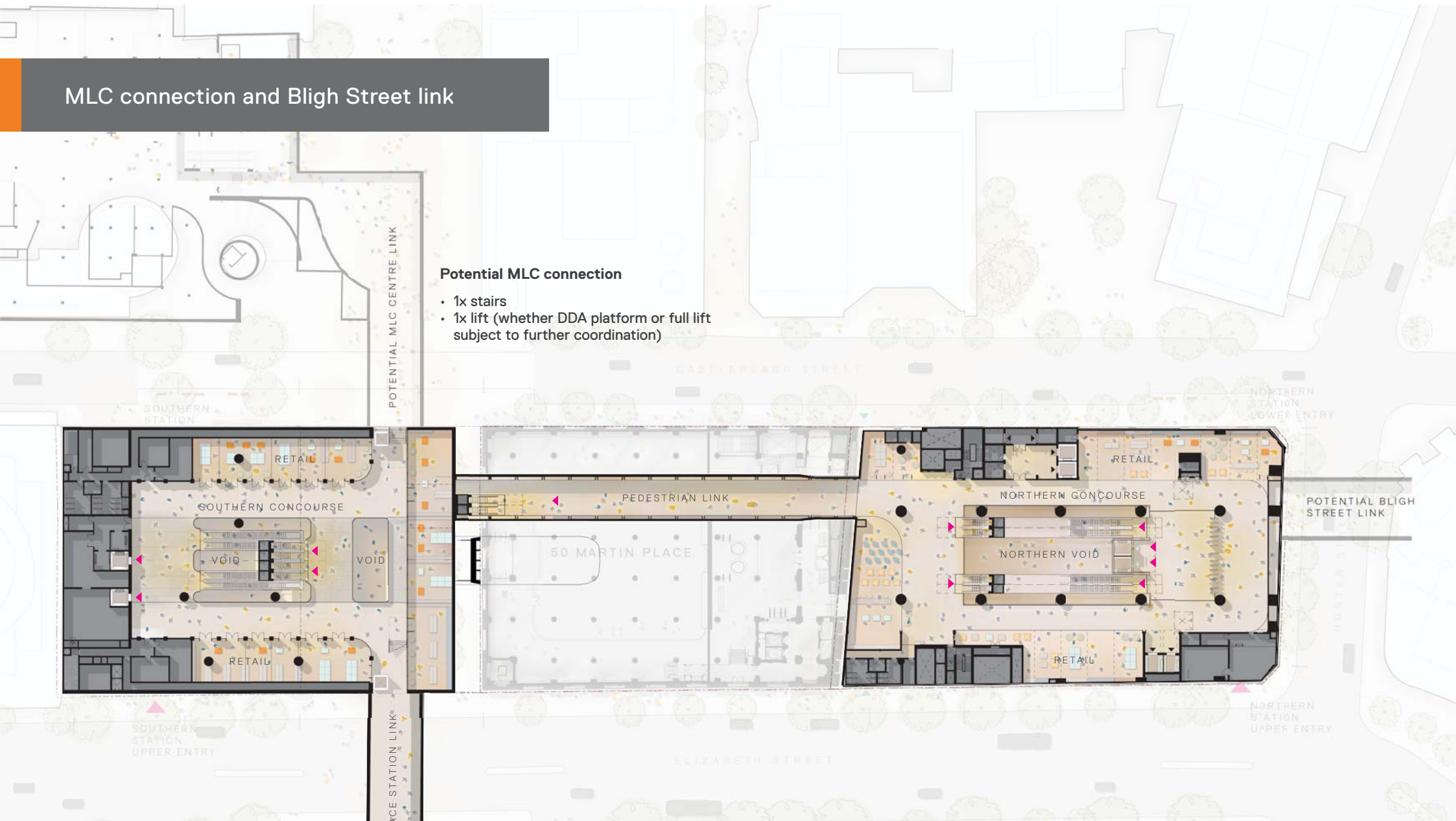
St James airport link + MPS connection



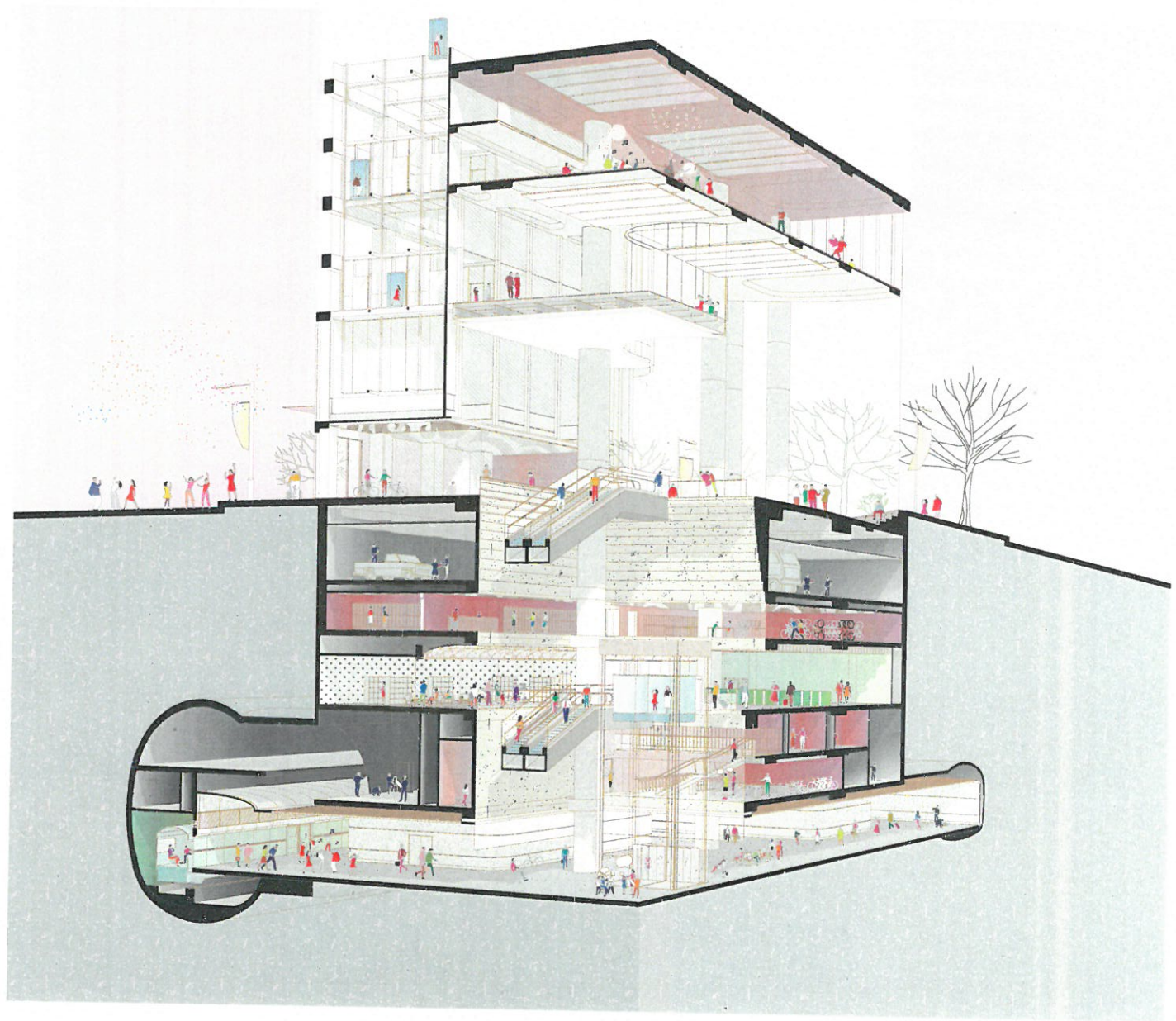
MLC connection and Bligh Street link

Potential MLC connection

- 1x stairs
- 1x lift (whether DDA platform or full lift subject to further coordination)



Thank you





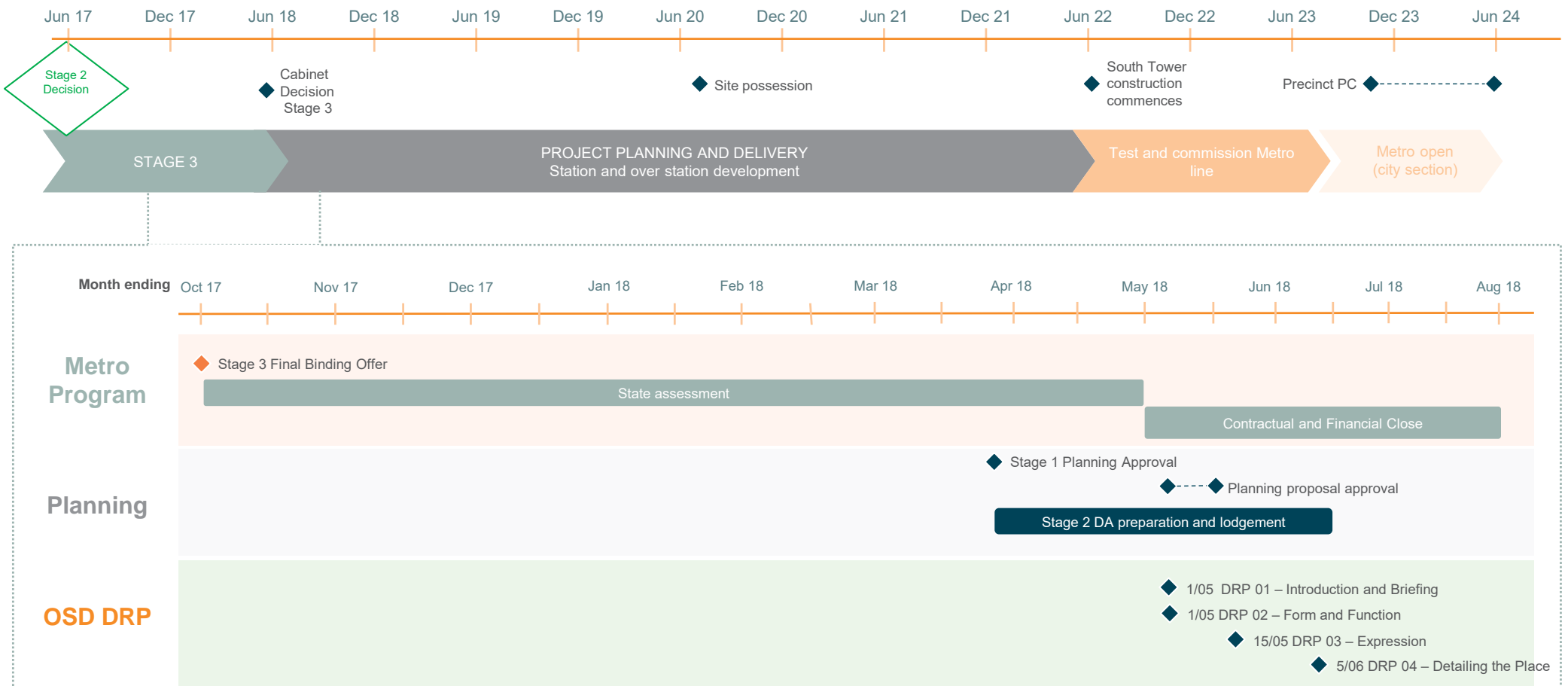
4

Integrated Metro Programme

Next steps

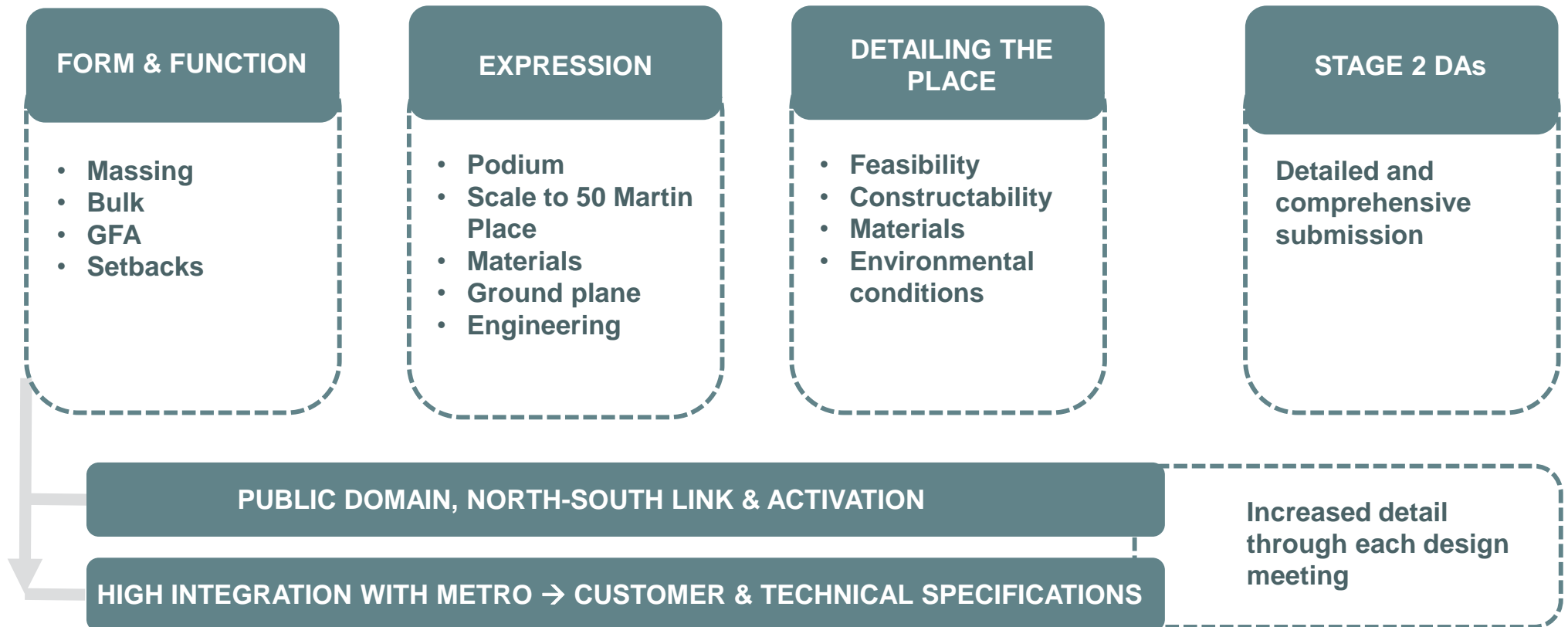
The Design Review Panel and planning processes are closely tied to the Metro Program design

Martin Place OSD DRP indicative timeline



Review of the design development process

The Design Review Panel underpins the design excellence process and will ensure the highest standard of architectural, urban and landscape design





5

Design Update

North Tower Design Update

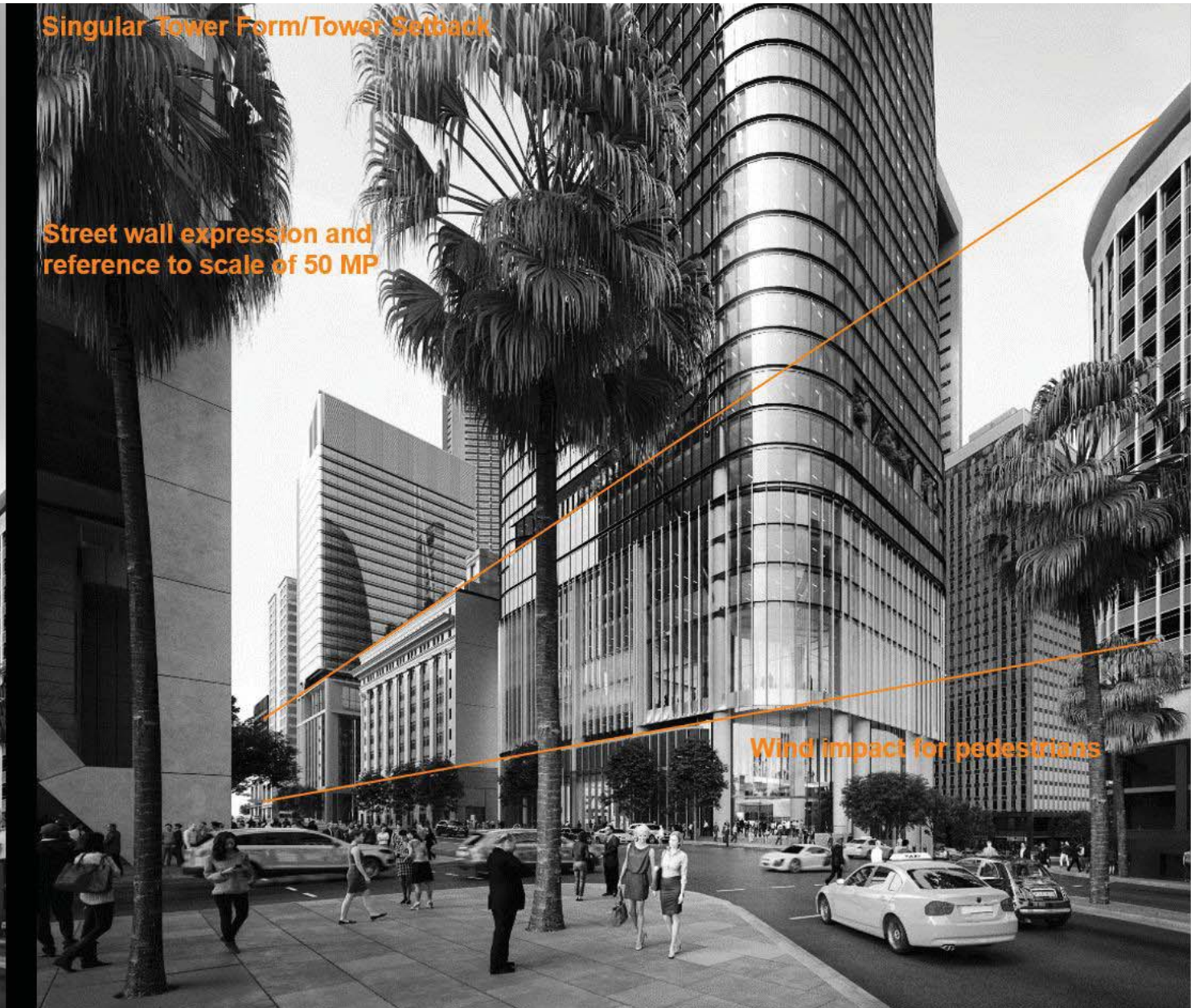
JPW has commenced working through the Sydney Metro DRP feedback for the North Tower

2017 DRP Open Items



Singular Tower Form/Tower Setback

Street wall expression and
reference to scale of 50 MP



Wind impact for pedestrians

North Tower Design Update (continued)

SSDA Design Guidelines

Singular Tower Form/Tower Setback

Ensure SSDA Max GFA is balanced with building forms that are proportionately elegant and exhibit appropriate façade articulation

Street wall expression and reference to scale of 50 MP

The facades are to respond to the articulation, principal streetwall height or other key datum lines of 50MP, former Qantas House and the reverse podium of 8 Chifley and Deutsche bank

A new building tower and podium/base is to sensitively integrate (towards and at its southern extent) with the low scale of 50 MP and clearly articulate its street wall height on Castlereagh and Elizabeth Streets

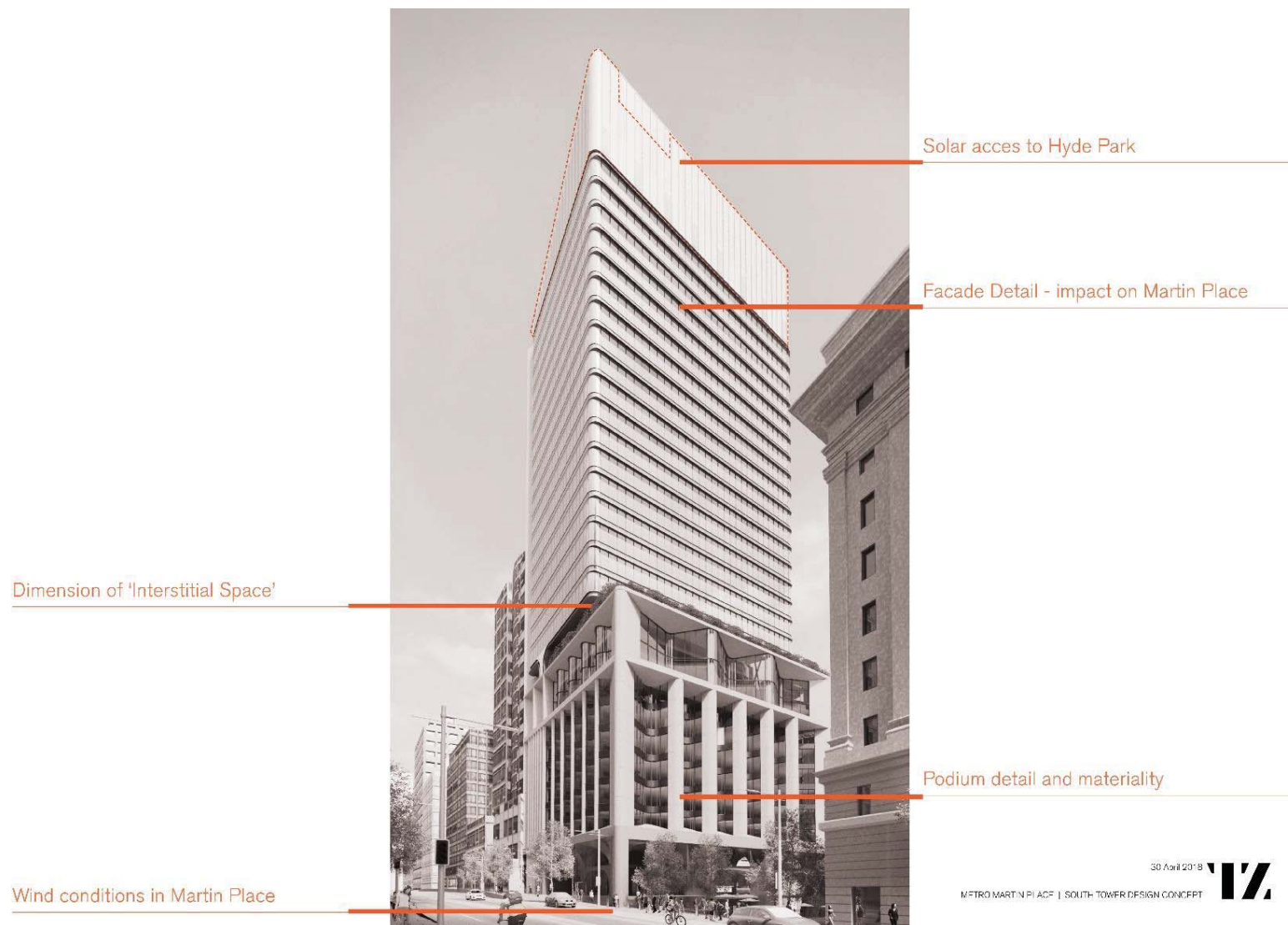
A considered transition between the North Tower and 50MP is required, with the southern elevation of the North Tower being sensitively integrated with the form of 50MP

Wind impact for pedestrians

Zero setback for Hunter Street to align with towers to the east may be appropriate subject to achieving relevant public domain standards to use and activity

South Tower Design Update

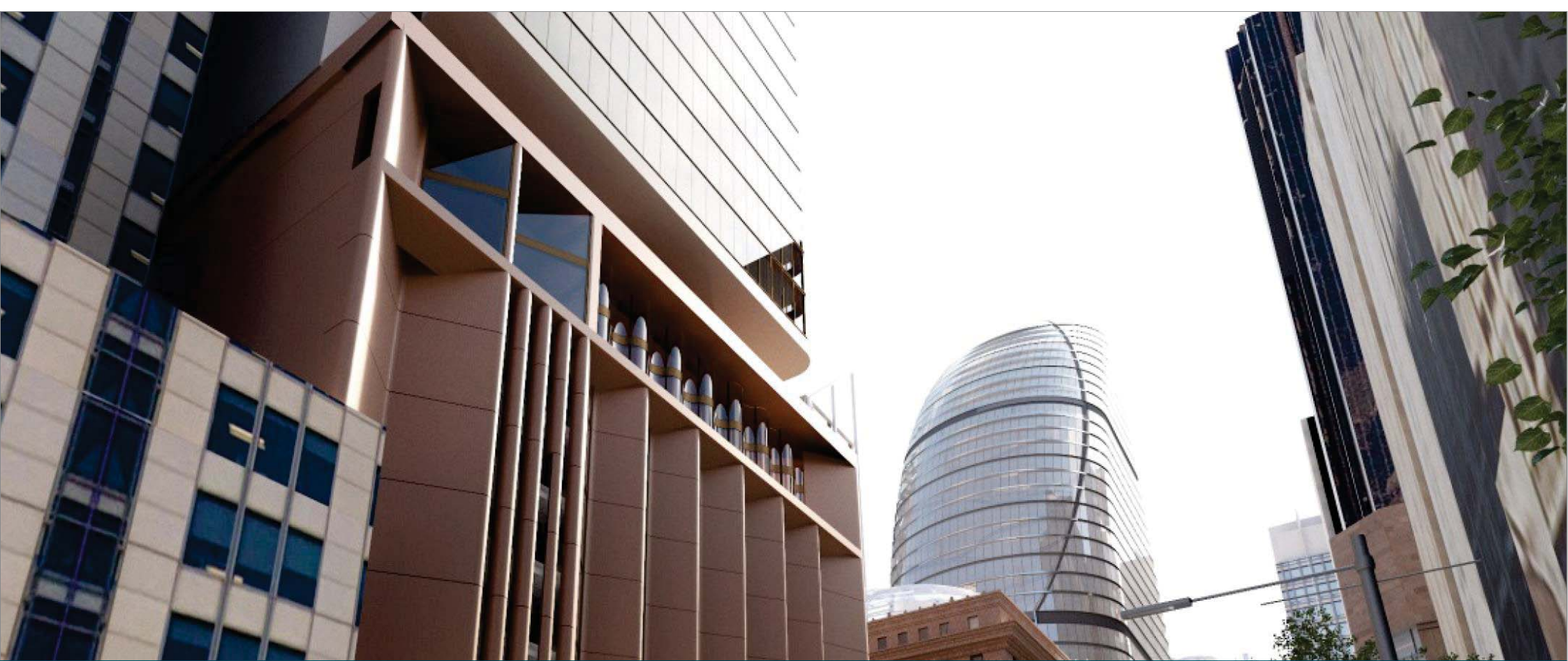
Tzannes has commenced working through the Sydney Metro DRP feedback for the South Tower





6

Questions & Discussion



7

Site Visit

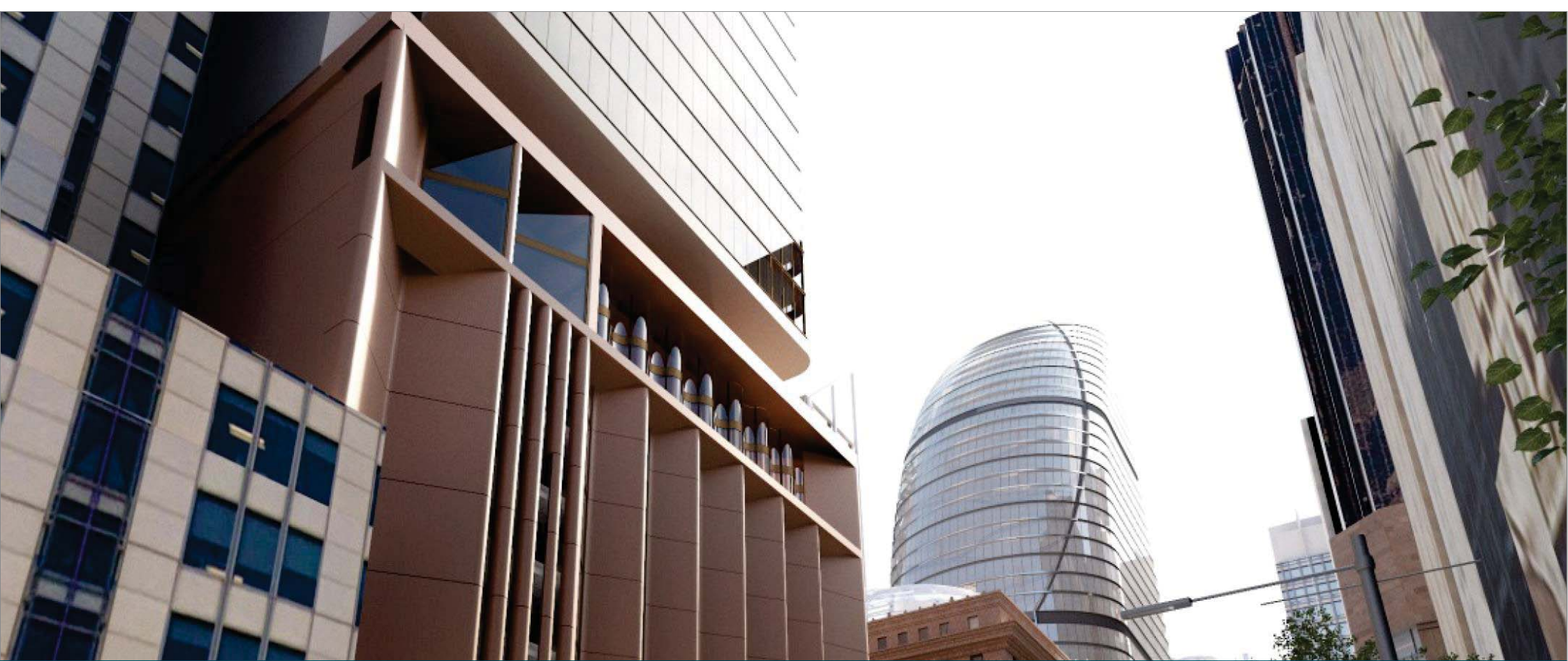


Metro Martin Place

Sydney Metro Martin Place Over Station Development Design Review Panel DRP #02

1 May 2018





1

North Tower



North Tower

- Refresher to site design approach
- Key diagrams to explain building
- Datum lines
- Podium/tower – relationship to 50MP, building and ground plane sections
- Through site link
- Sketch form – where we were to changes being made
- Next steps

Note: JPW presentation for North Tower under separate cover

NORTH TOWER

OSD DRP discussion

- Functional Brief and Urban Response



DRP Feedback

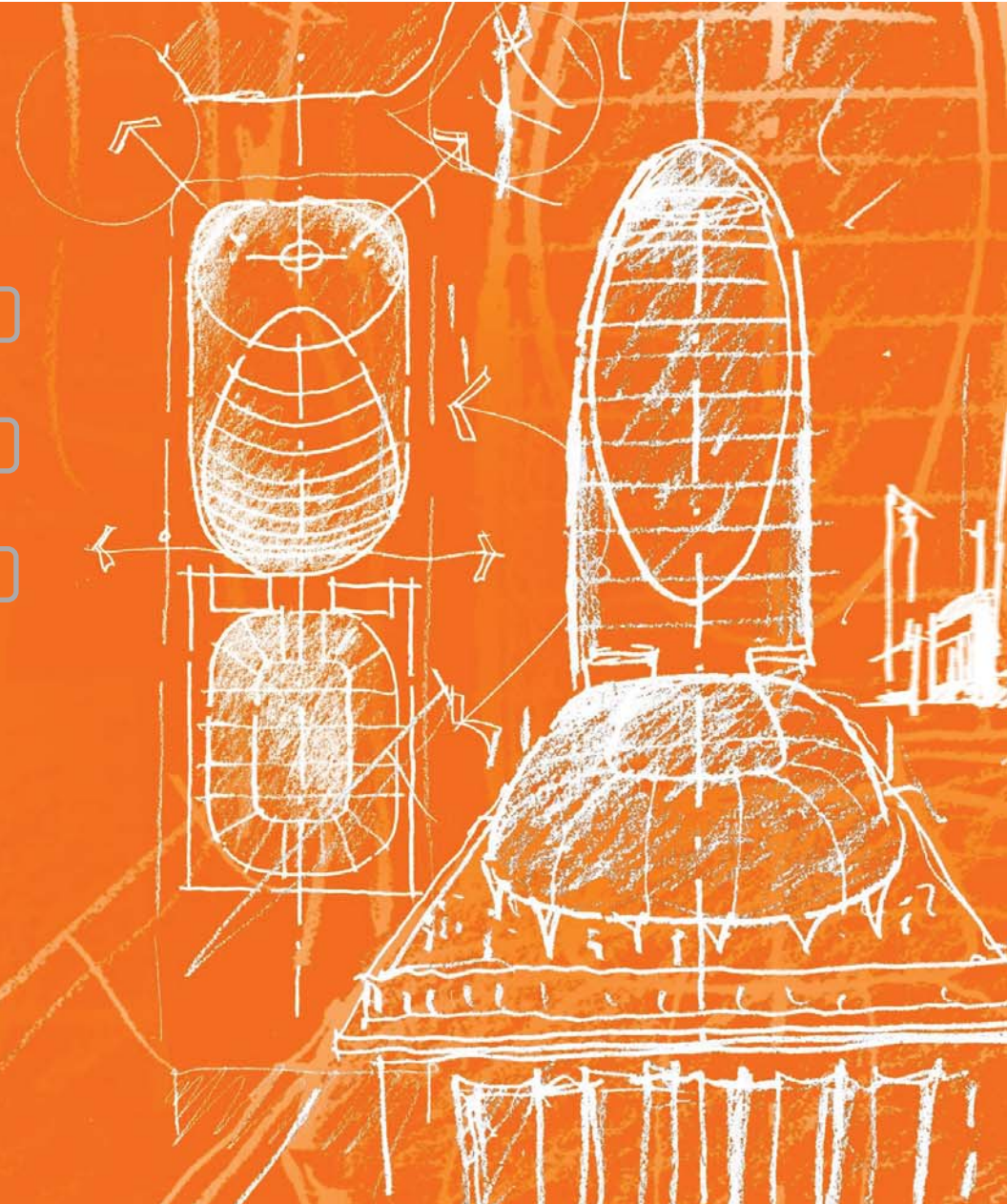
- Building Expression and Organisation



DRP Feedback

- Materials, Finishes and Detailing

DRP Feedback



NORTH TOWER

OSD DRP discussion

- Functional Brief and Urban Response



DRP Feedback

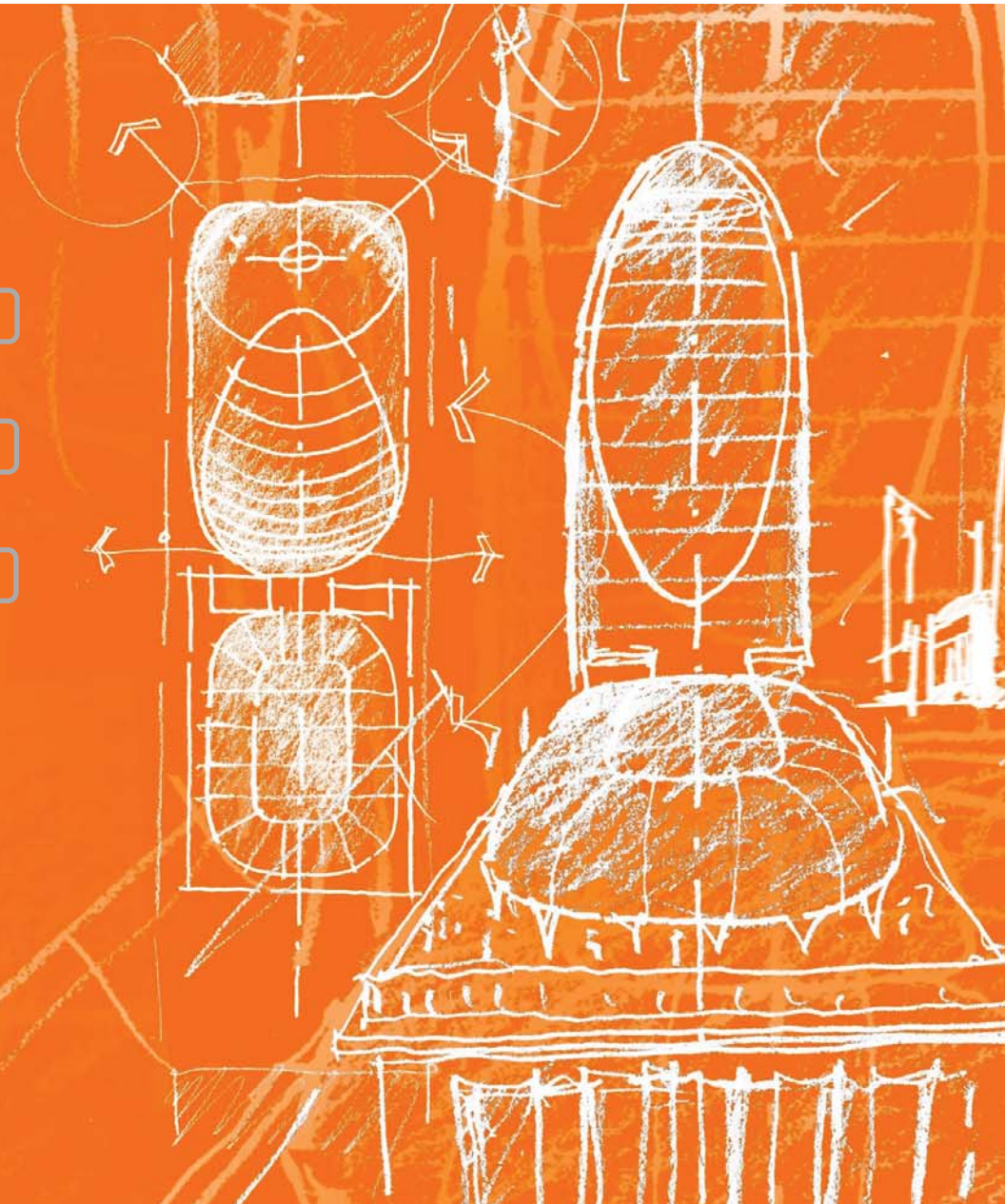
- Building Expression and Organisation



DRP Feedback

- Materials, Finishes and Detailing

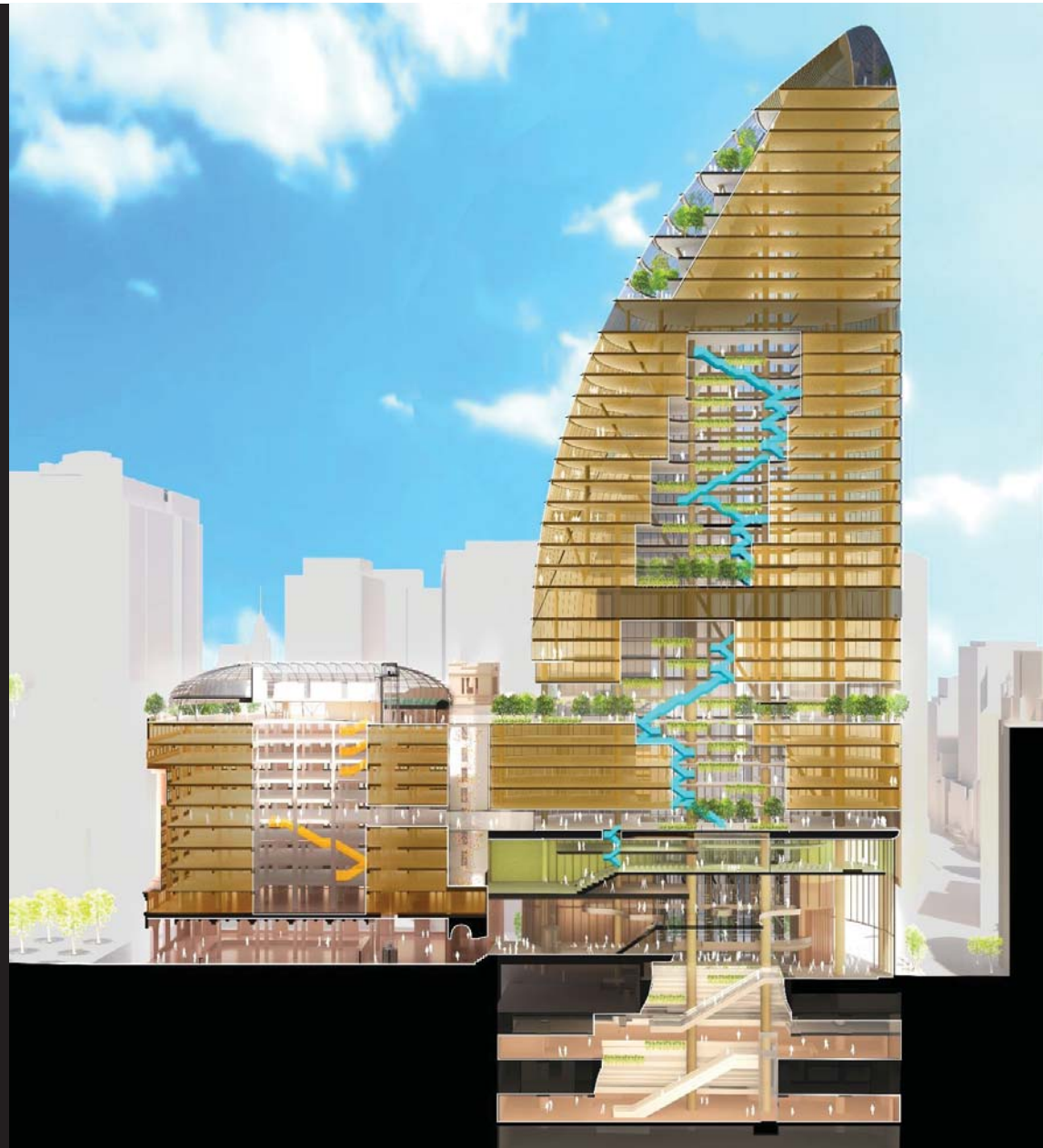
DRP Feedback

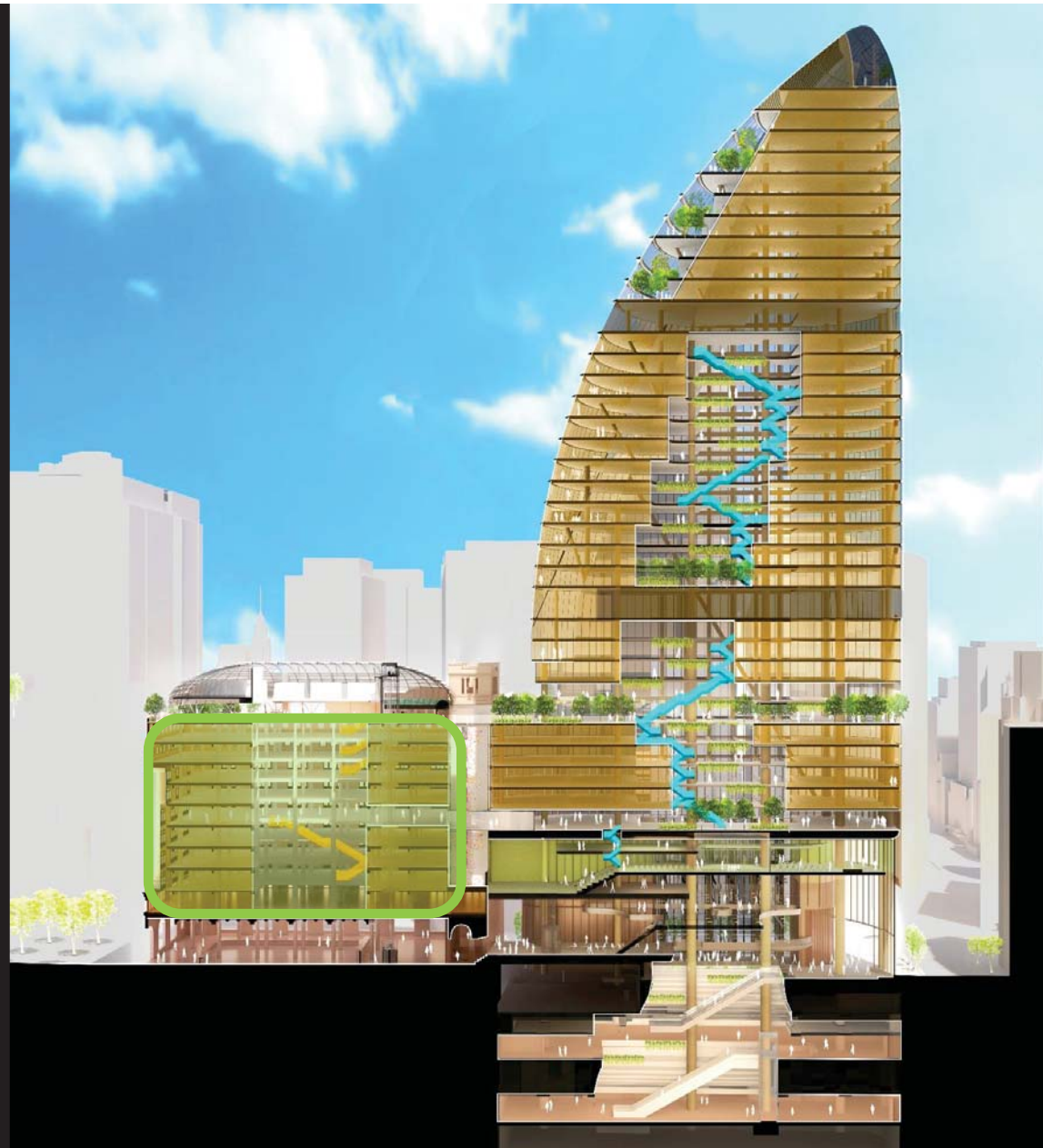


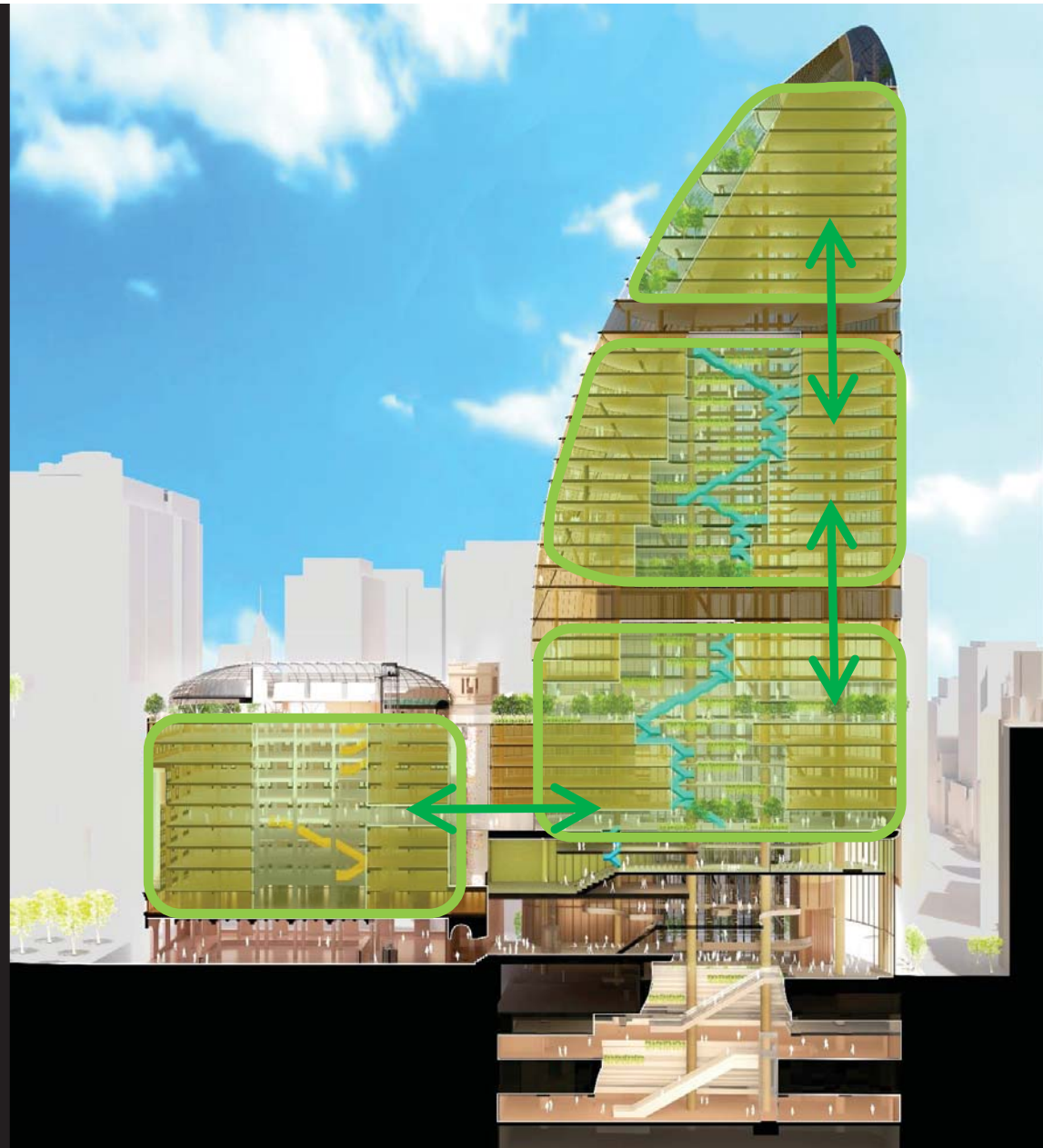
NORTH TOWER

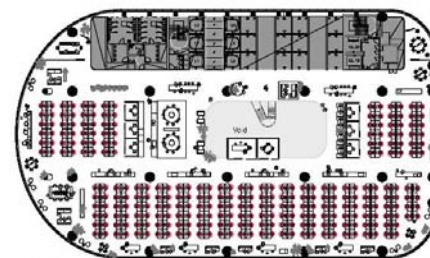
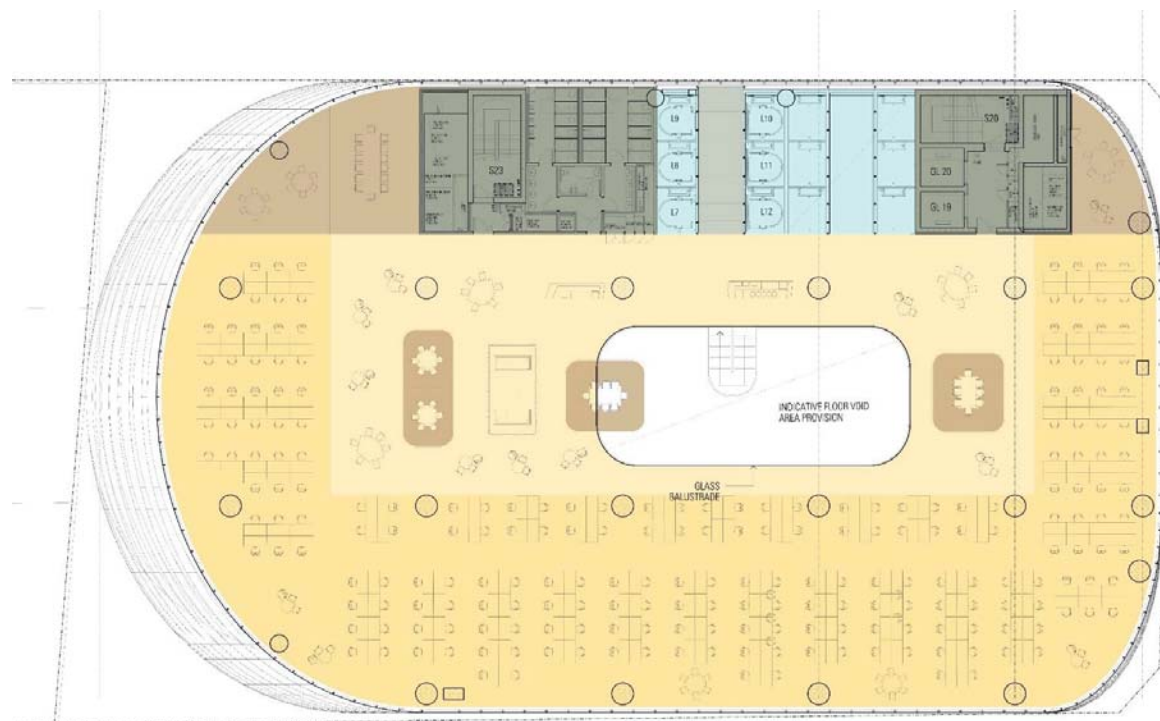
Functional Brief Opportunities



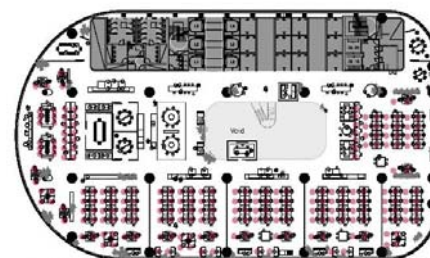




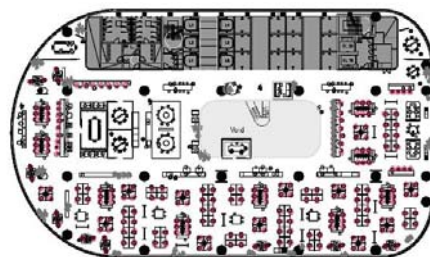




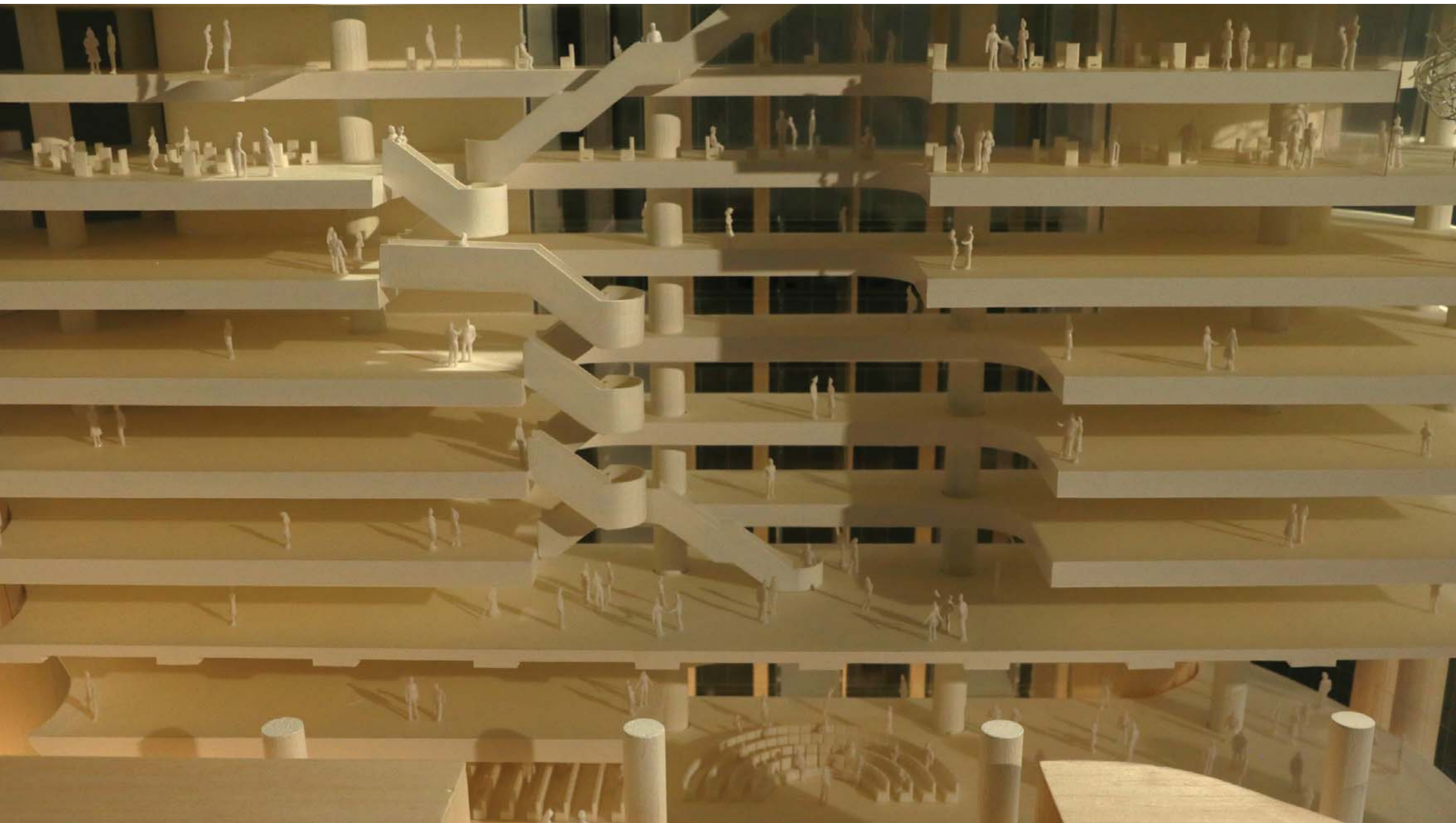
Non-Dealing

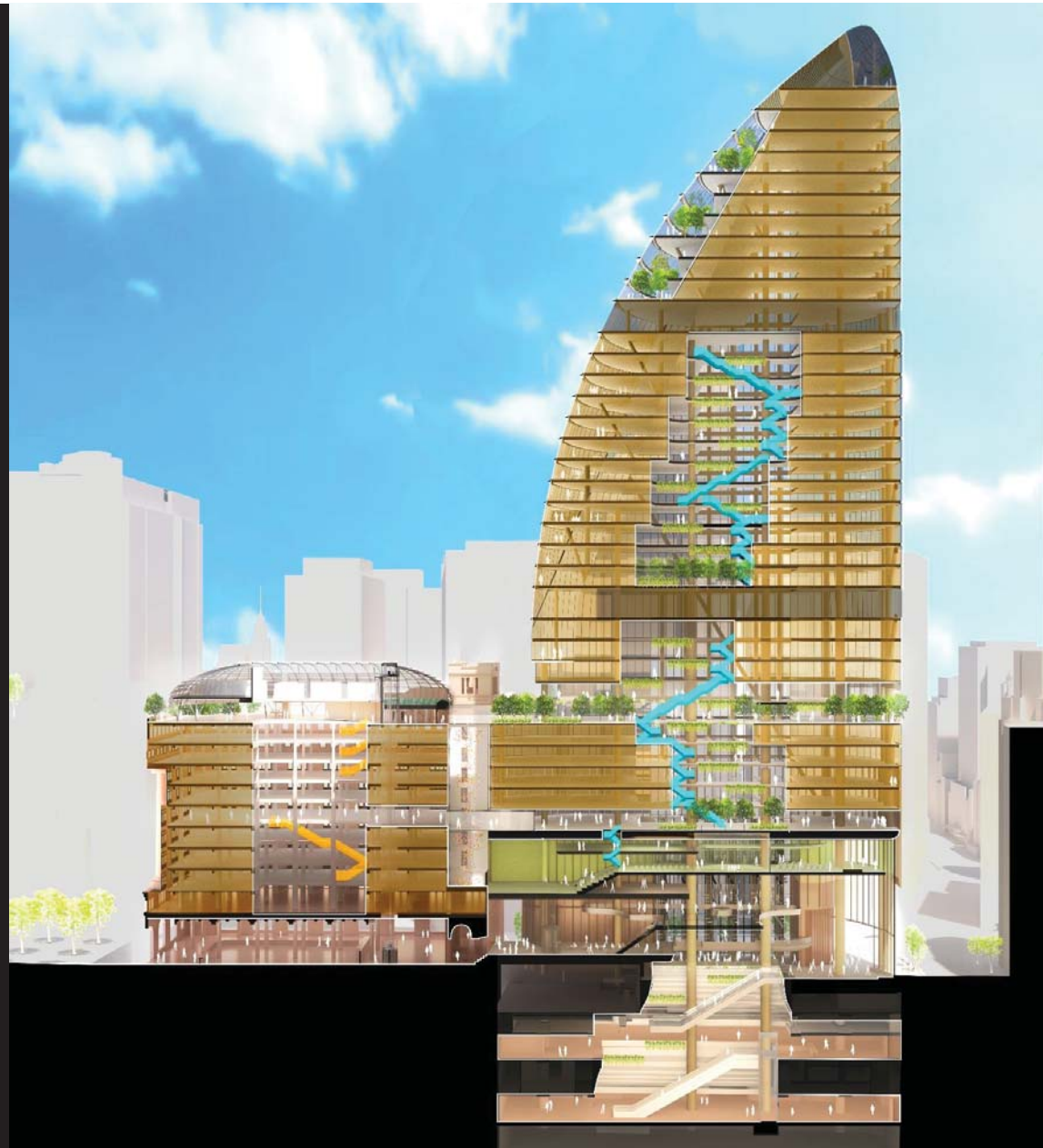


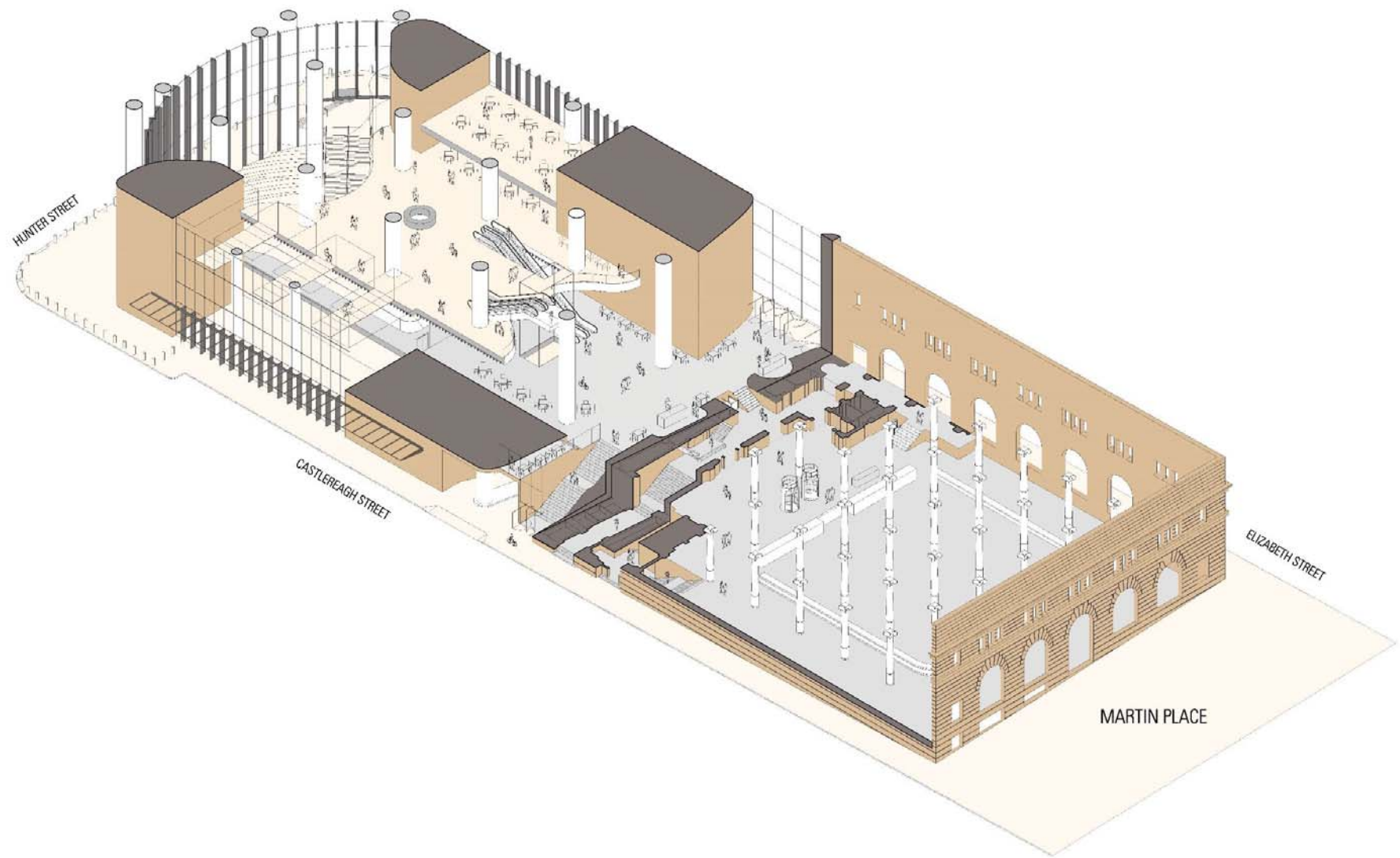
Non-Dealing
Headcount: 173



Agile
Headcount: 222

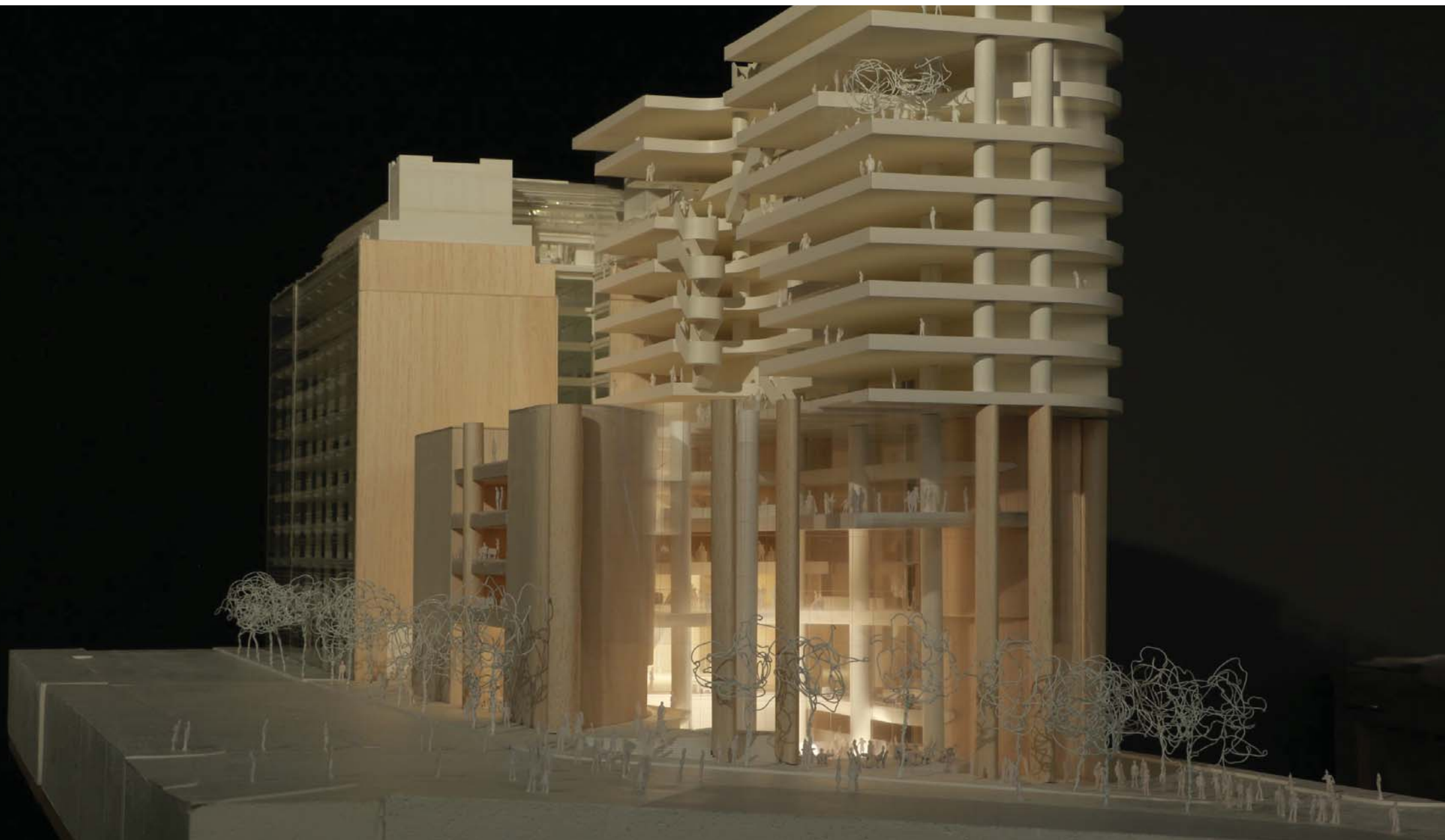














NORTH TOWER

DRP discussion

- Functional Brief and Urban Response



DRP Feedback

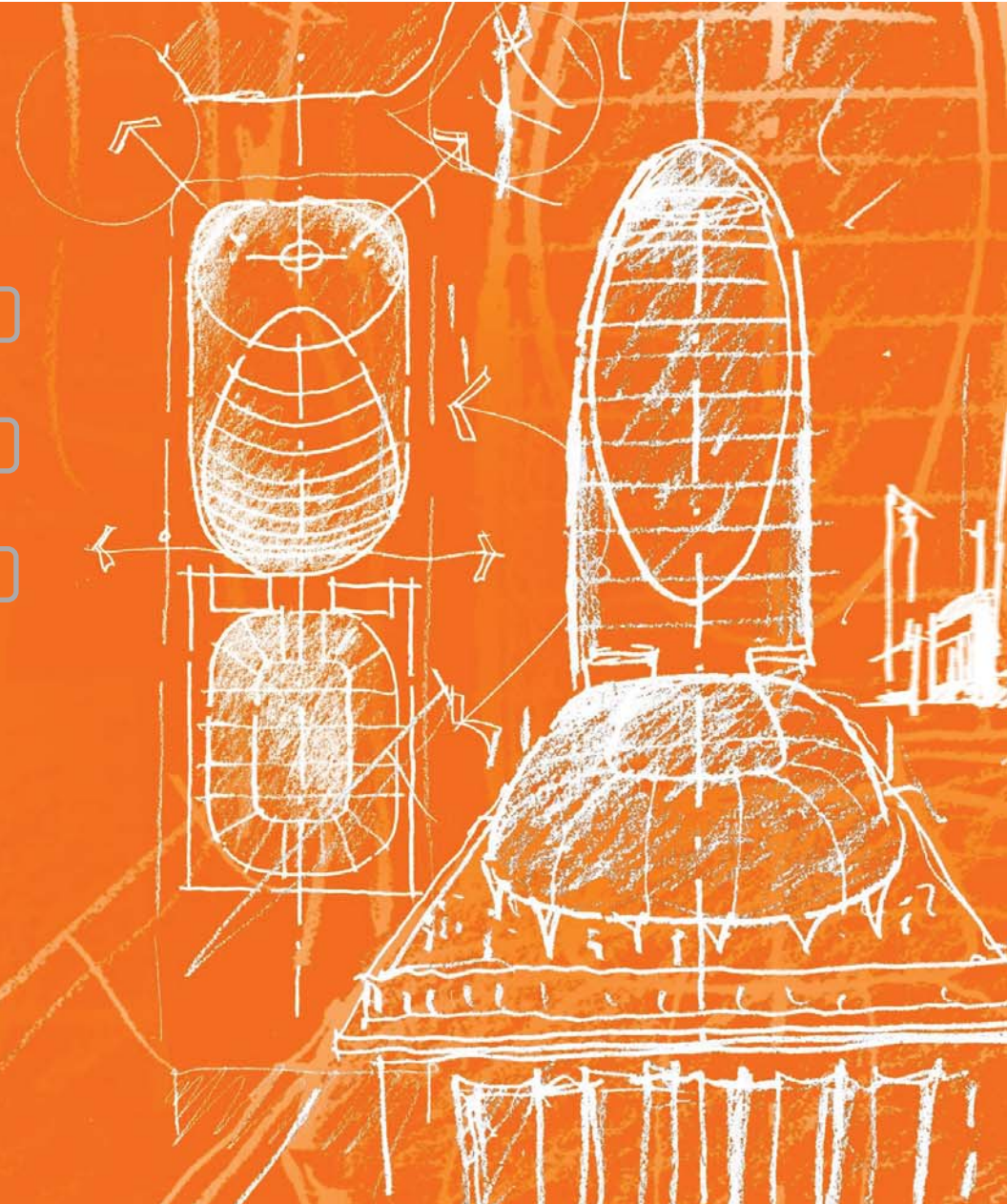
- Building Expression and Organisation



DRP Feedback

- Materials, Finishes and Detailing

DRP Feedback



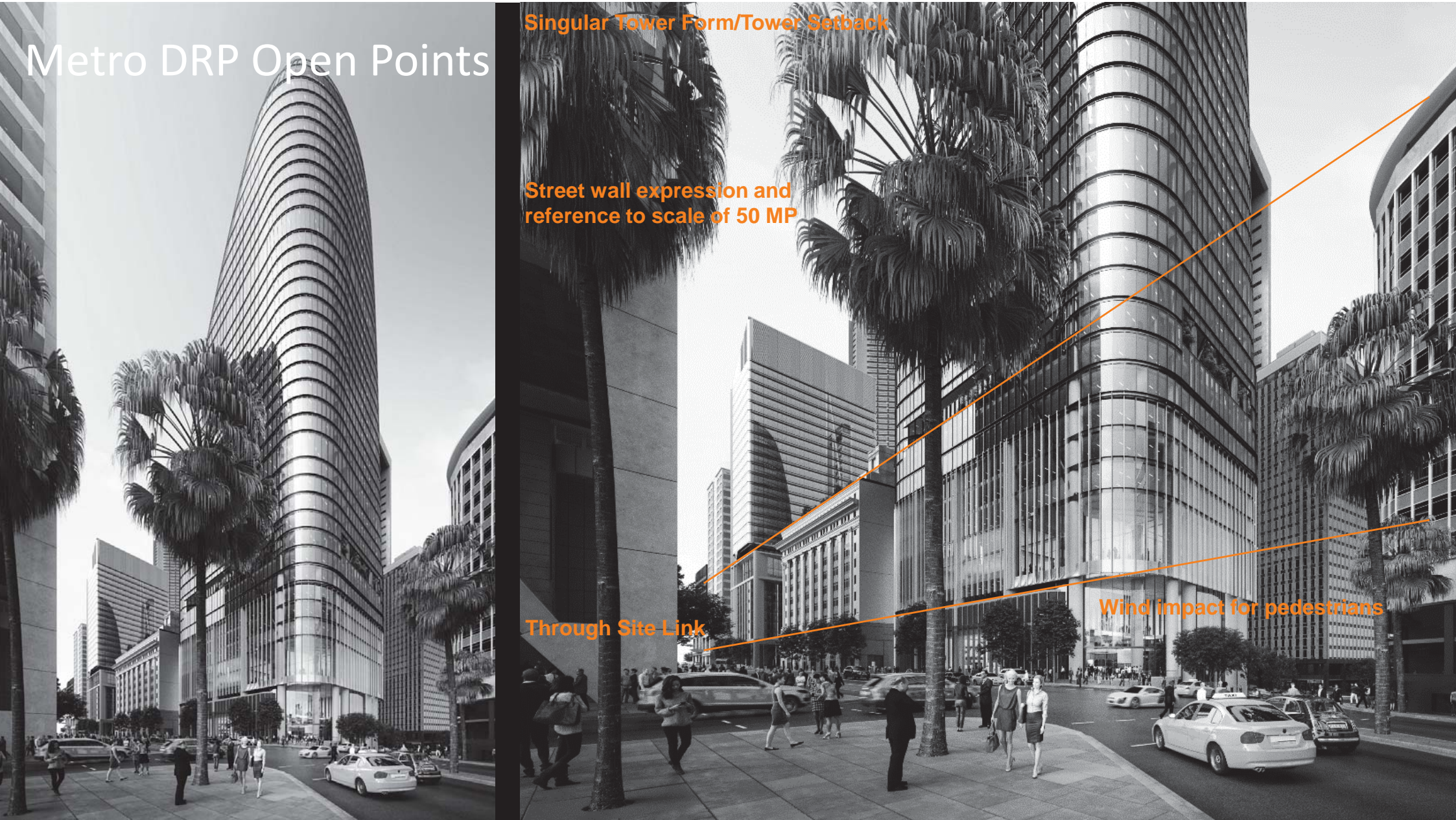
Metro DRP Open Points

Singular Tower Form/Tower Setback

Street wall expression and
reference to scale of 50 MP

Through Site Link

Wind impact for pedestrians



SSDA Design Guidelines



Singular Tower Form/Tower Setback

Ensure SSDA Max GFA is balanced with building forms that are proportionately elegant and exhibit appropriate façade articulation

Street wall expression and reference to scale of 50 MP

The facades are to respond to the articulation, principal streetwall height or other key datum lines of 50MP, former Qantas House and the reverse podium of 8 Chifley and Deutsche bank


A new building tower and podium/base is to sensitively integrate (towards and at its southern extent) with the low scale of 50 MP and clearly articulate its street wall height on Castlereagh and Elizabeth Streets

A considered transition between the North Tower and 50MP is required, with the southern elevation of the North Tower being sensitively integrated with the form of 50MP

Through Site Link

Wind impact for pedestrians

Zero setback for Hunter Street to align with towers to the east may be appropriate subject to achieving relevant public domain standards to use and activity

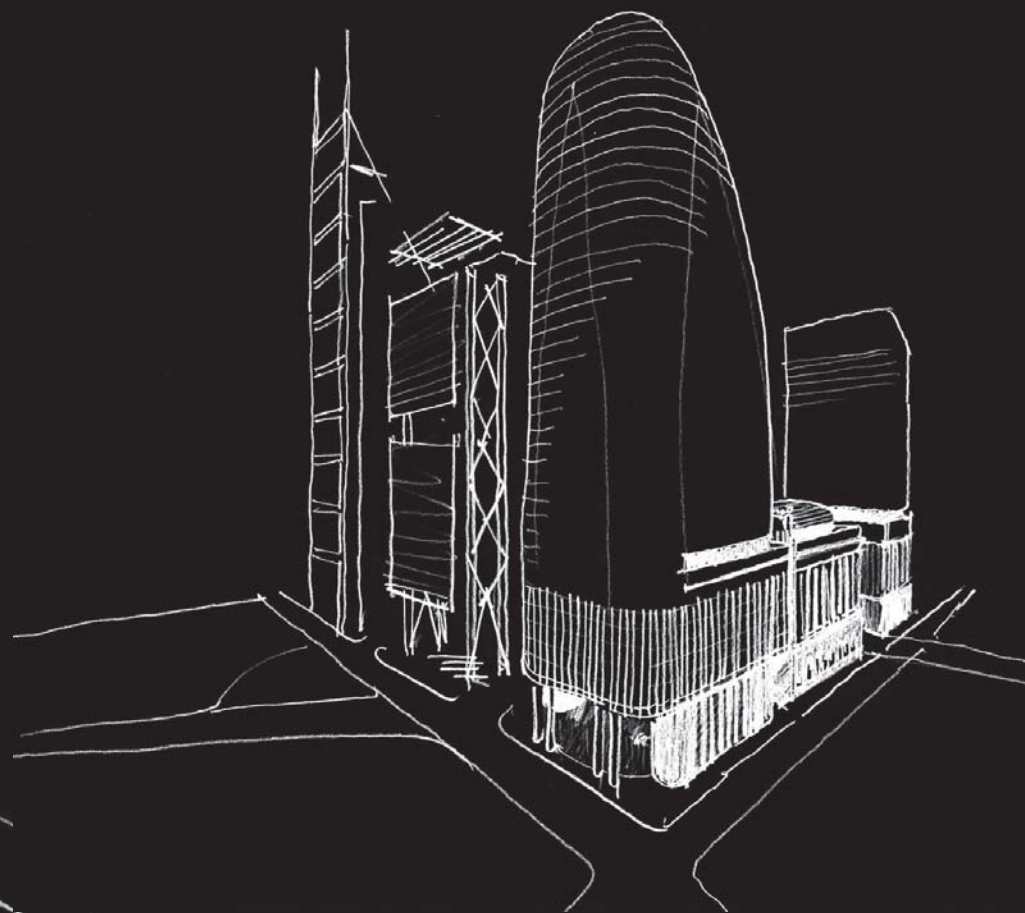
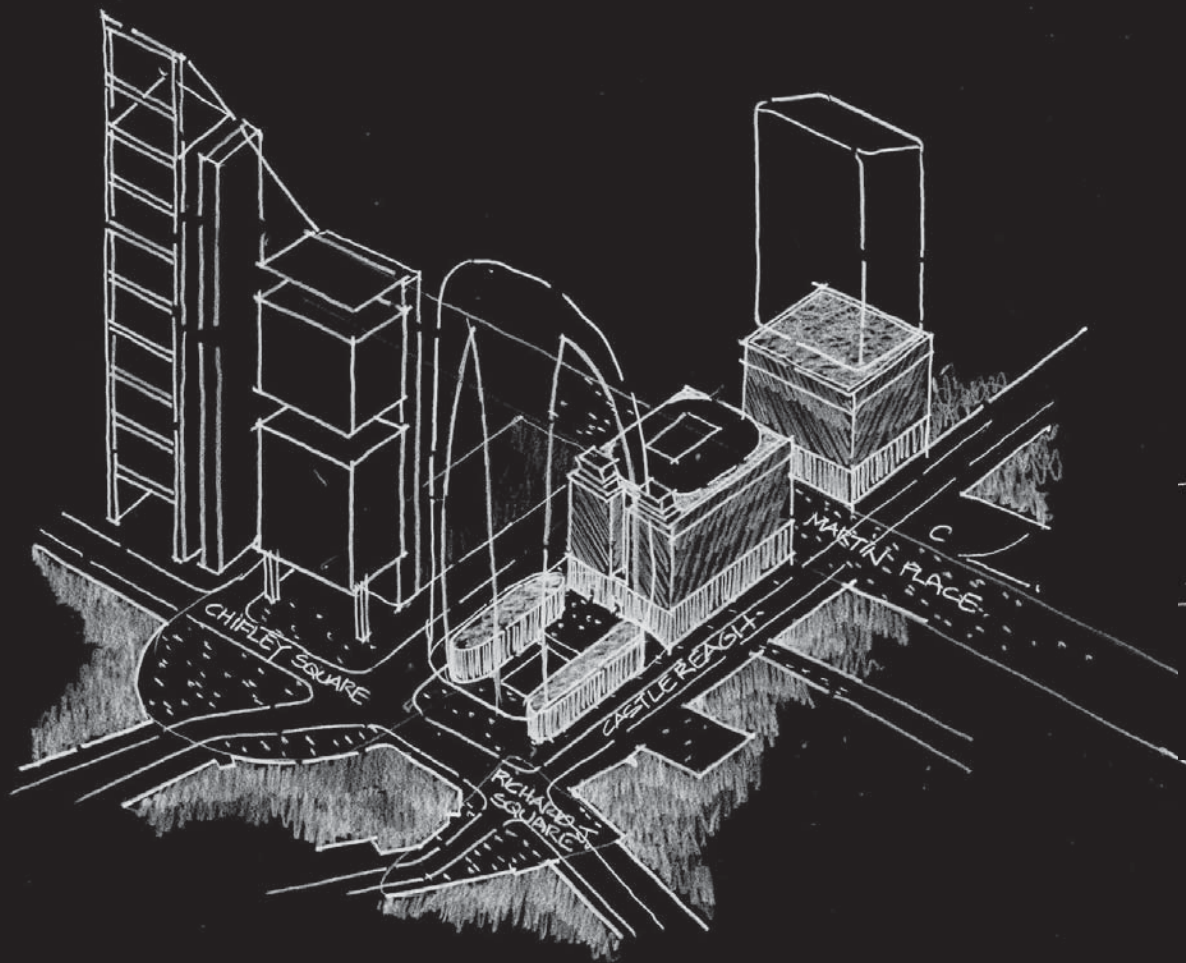


NORTH TOWER

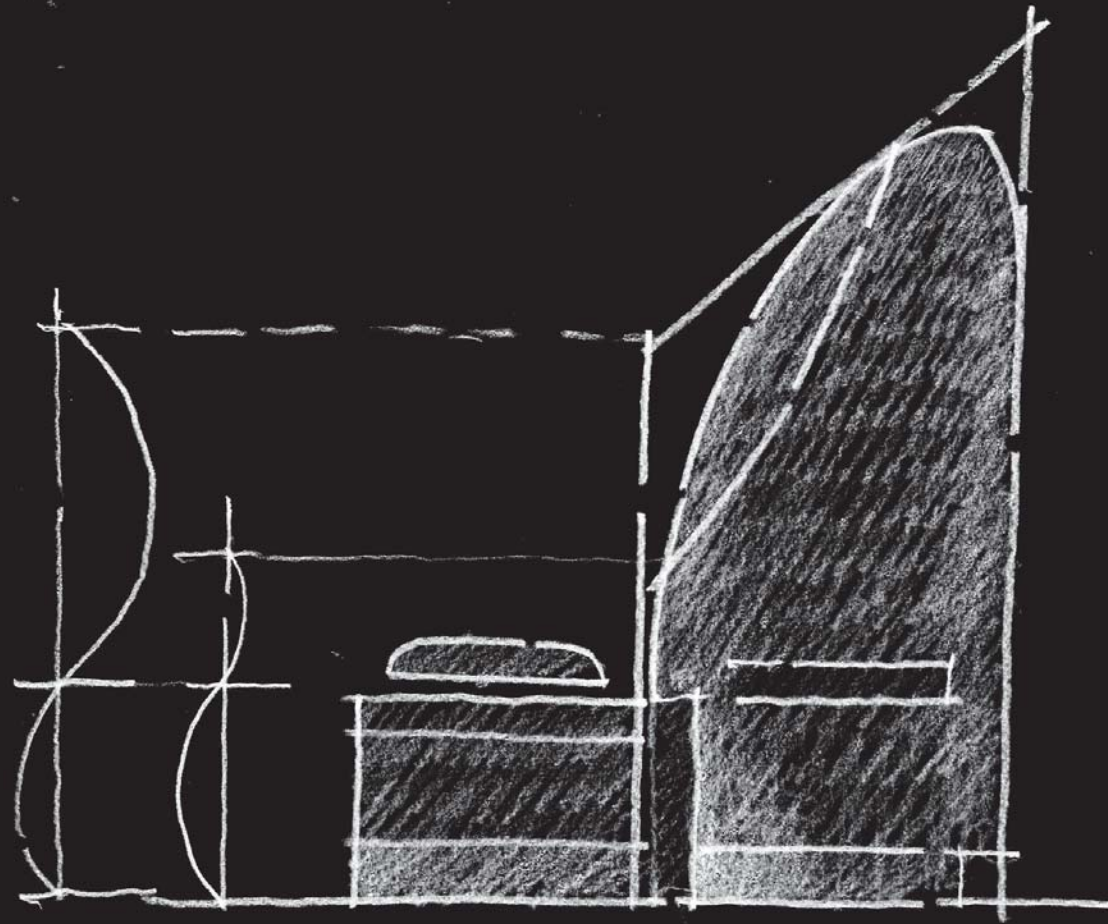
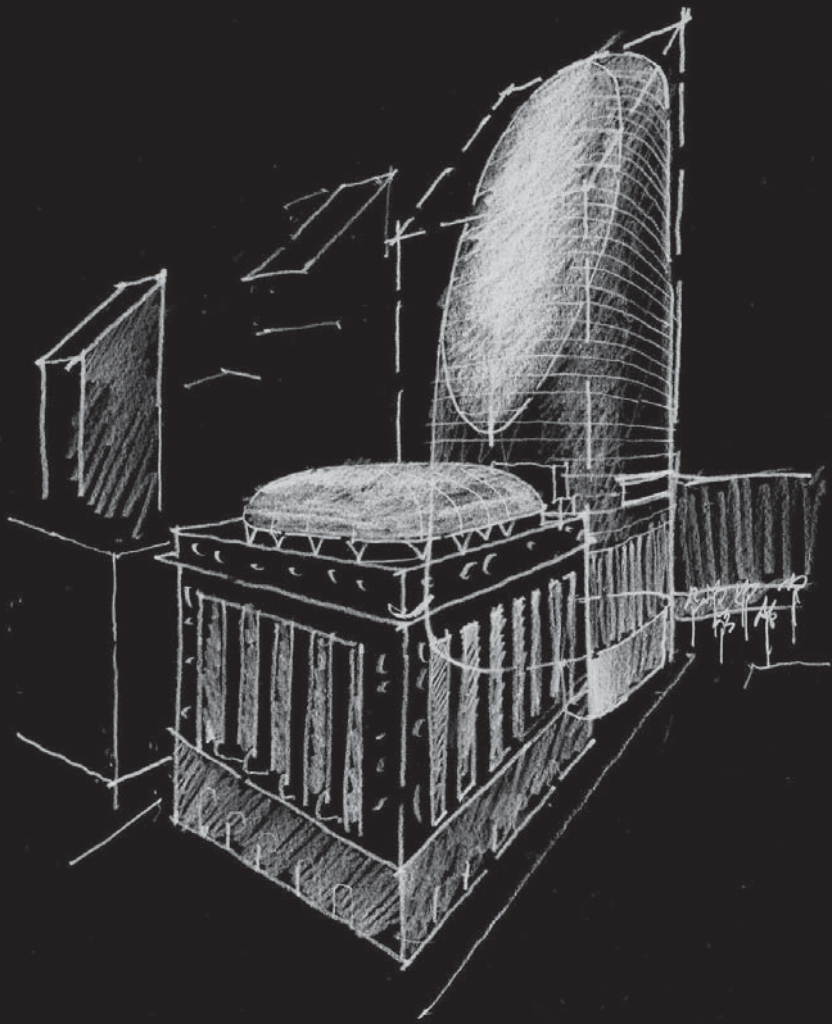
Development of Building Form

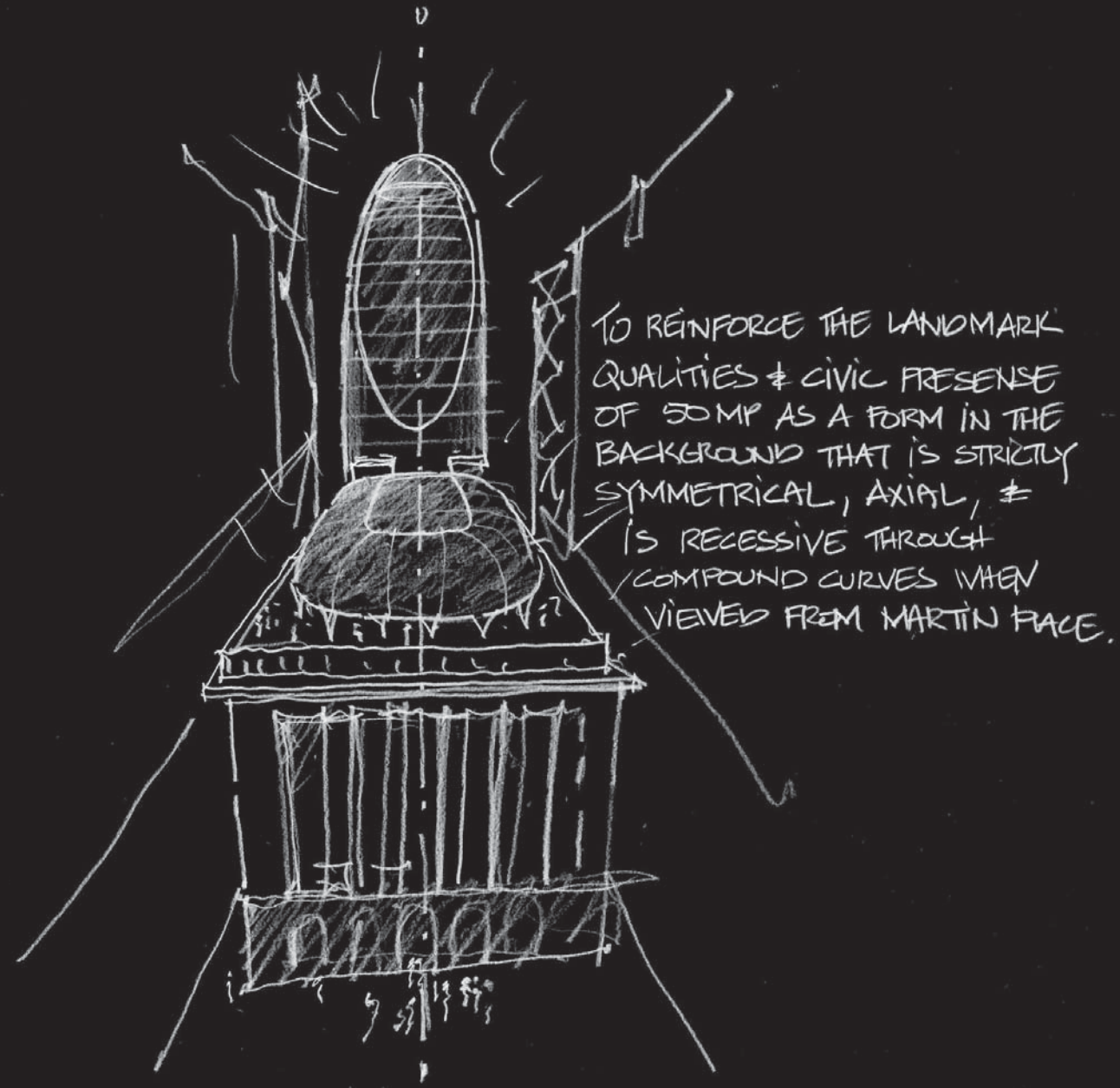
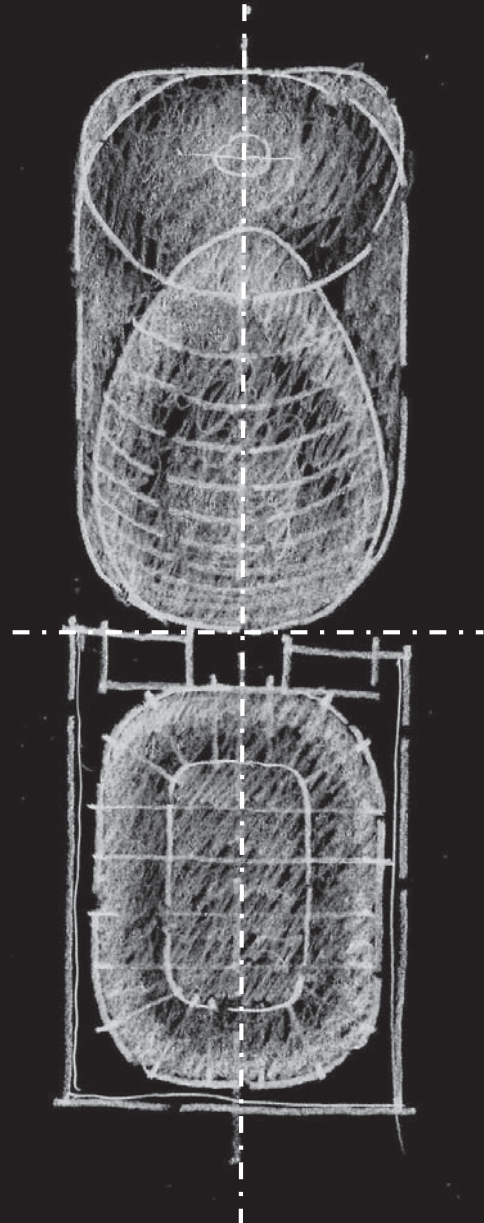
- Initial Response
- Developed ideas – relationship to 50MP
- Translate into simplified form model

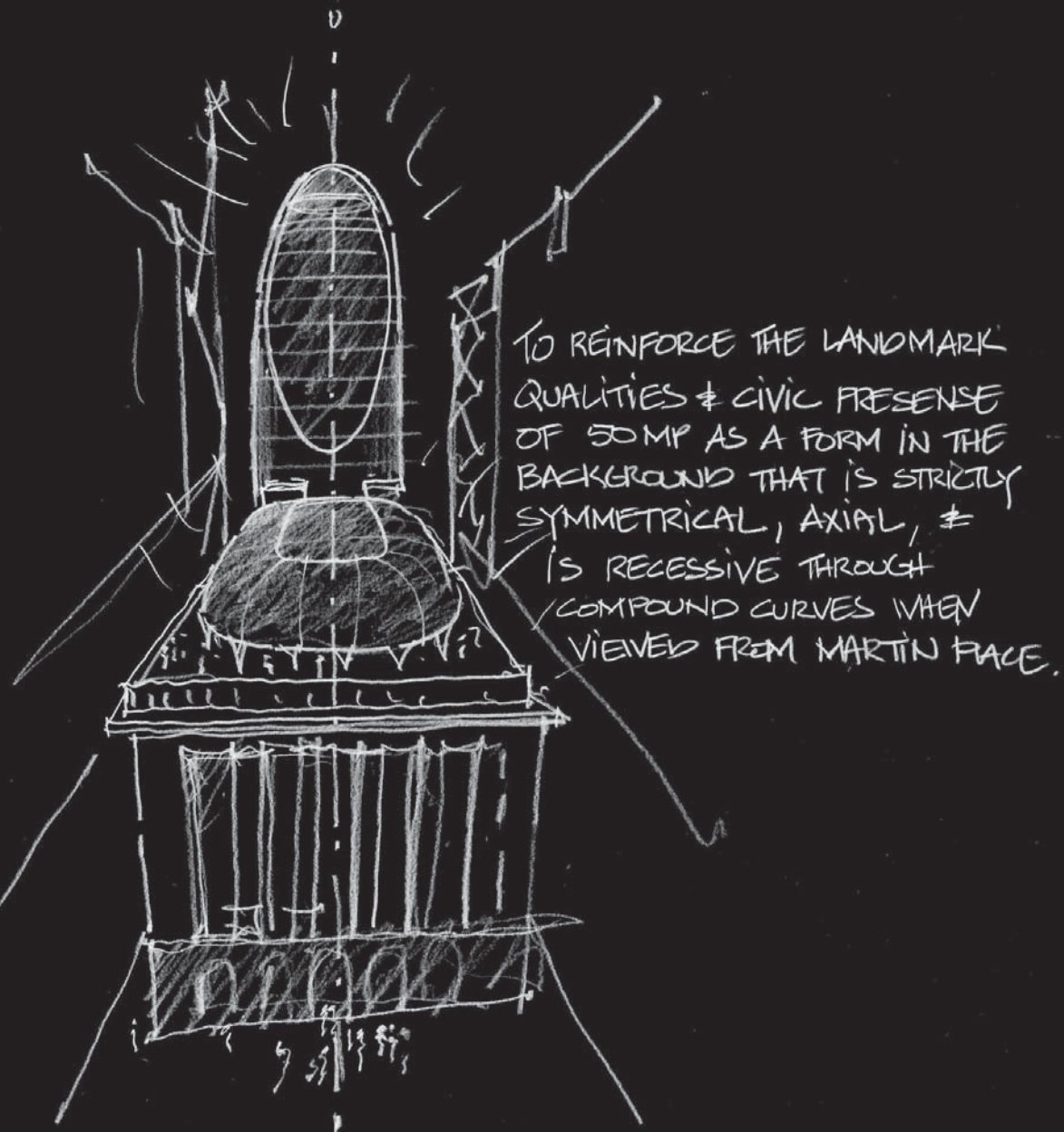
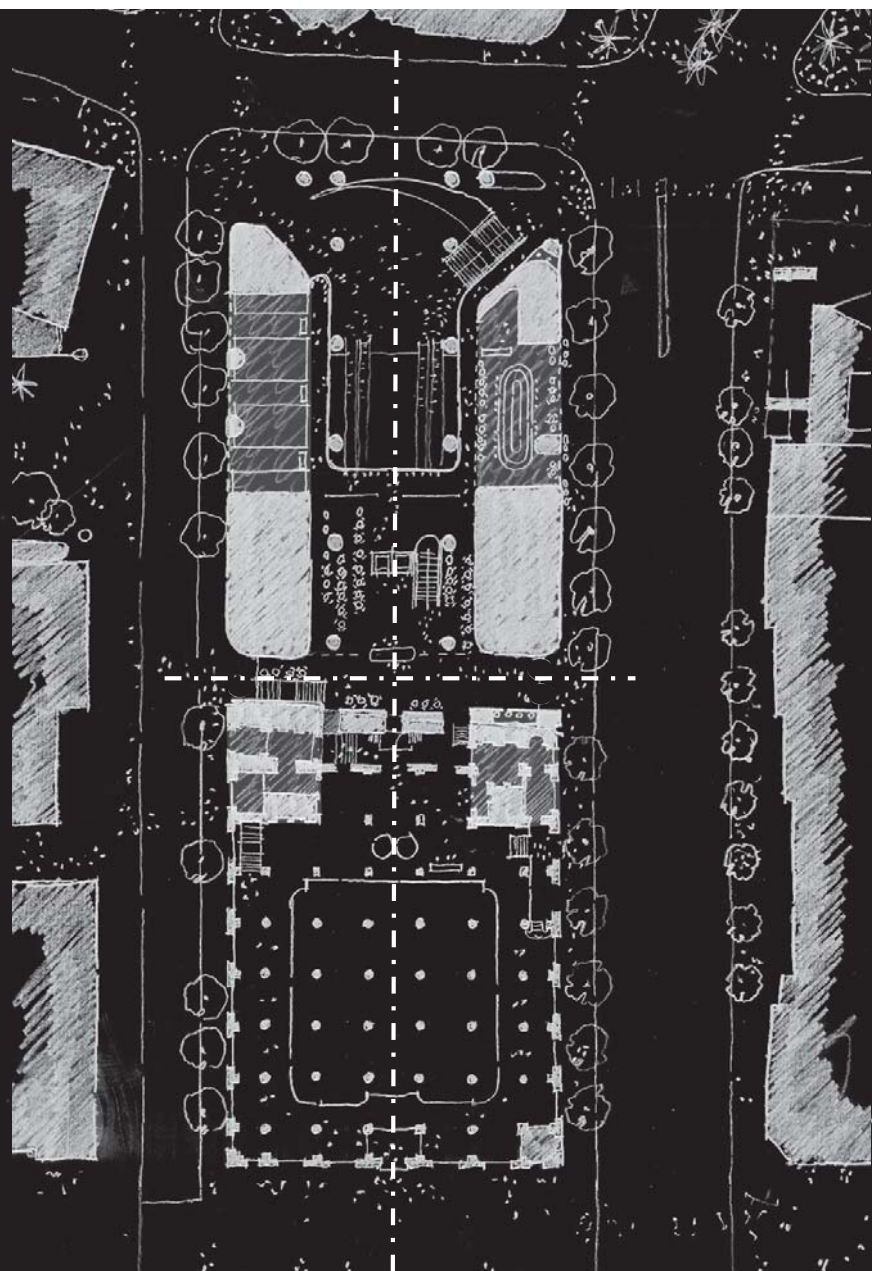


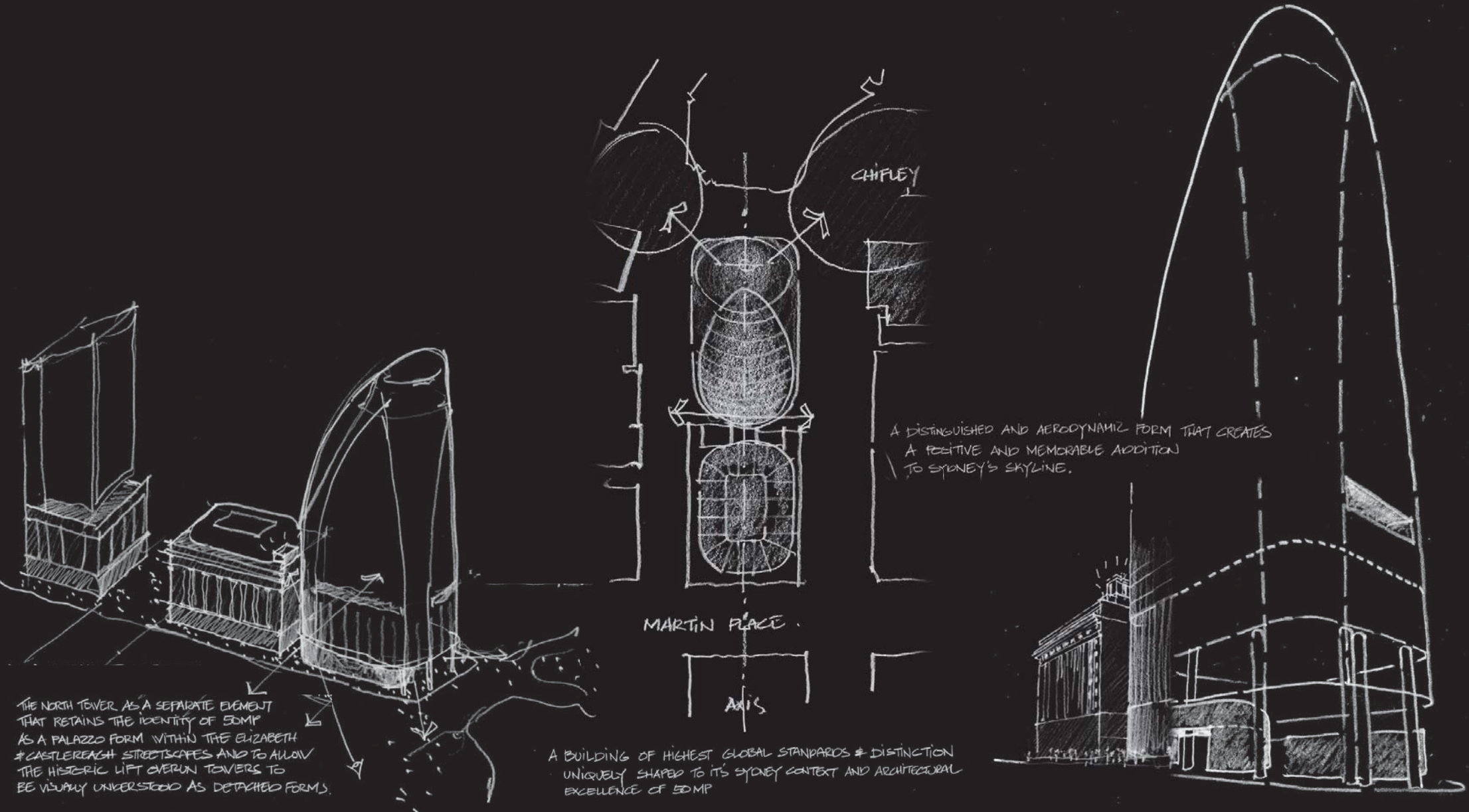


PA









CHIFLEY

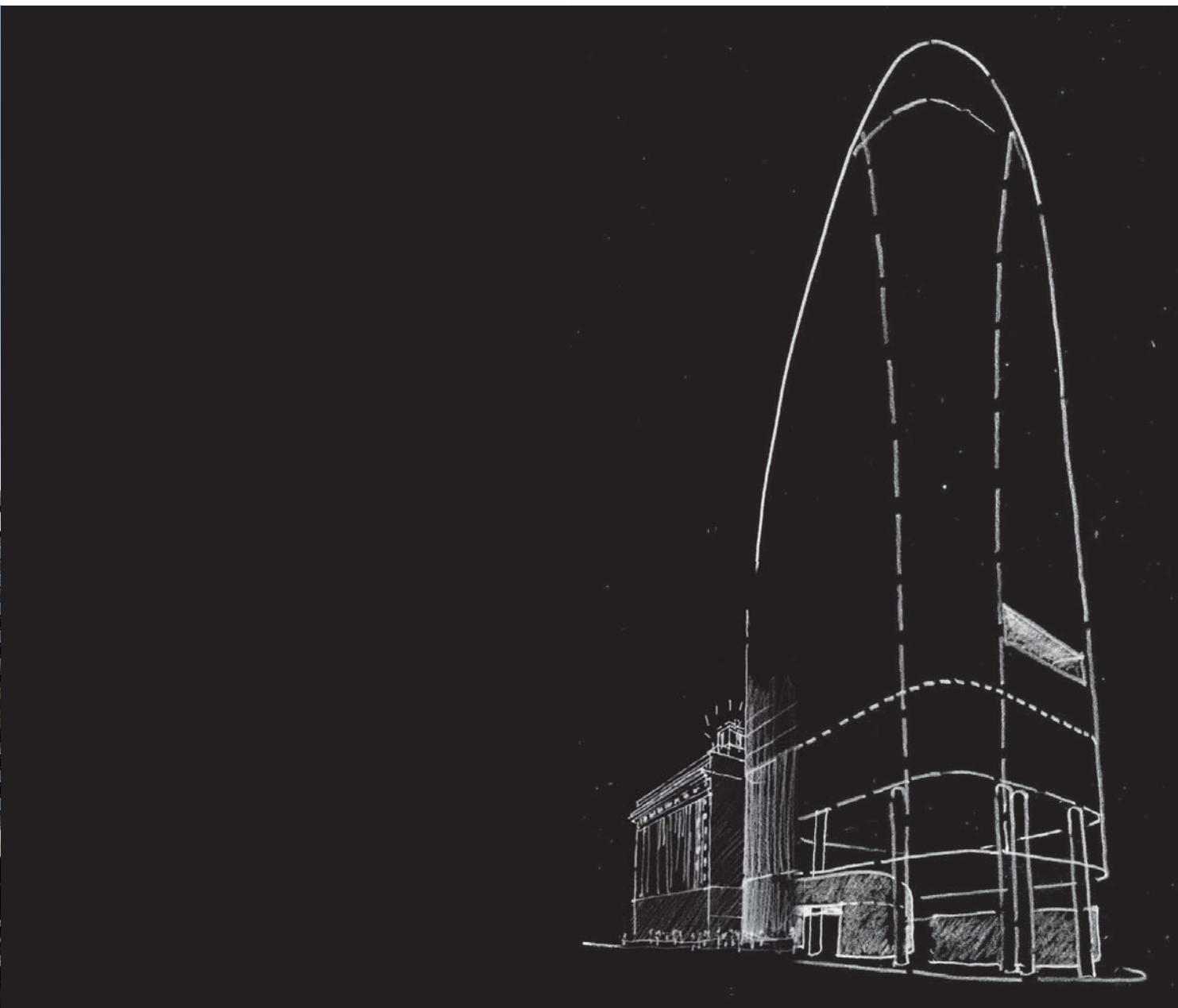
A DISTINGUISHED AND AERODYNAMIC FORM THAT CREATES
A POSITIVE AND MEMORABLE ADDITION
TO SYDNEY'S SKYLINE.

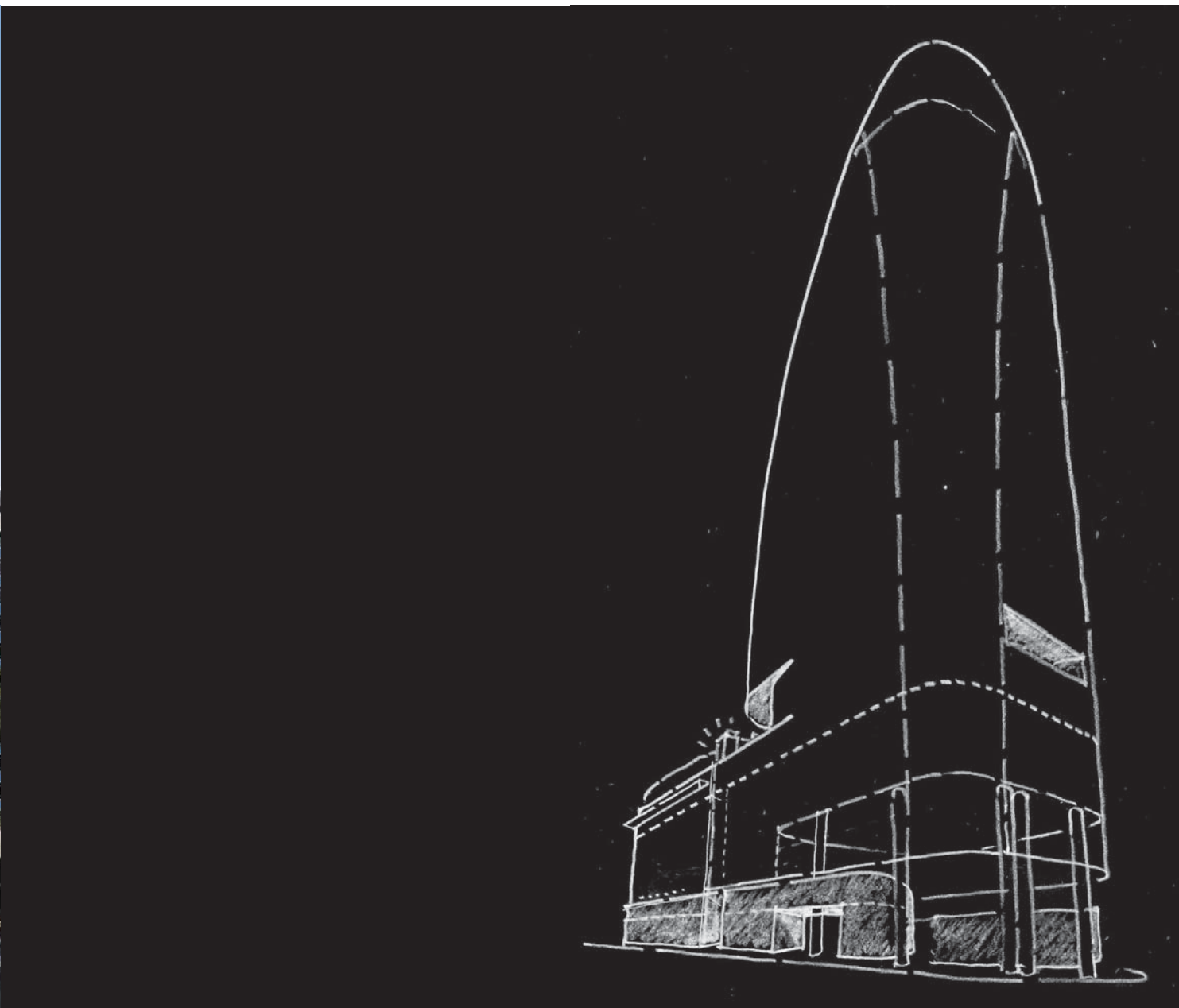
MARTIN PLACE

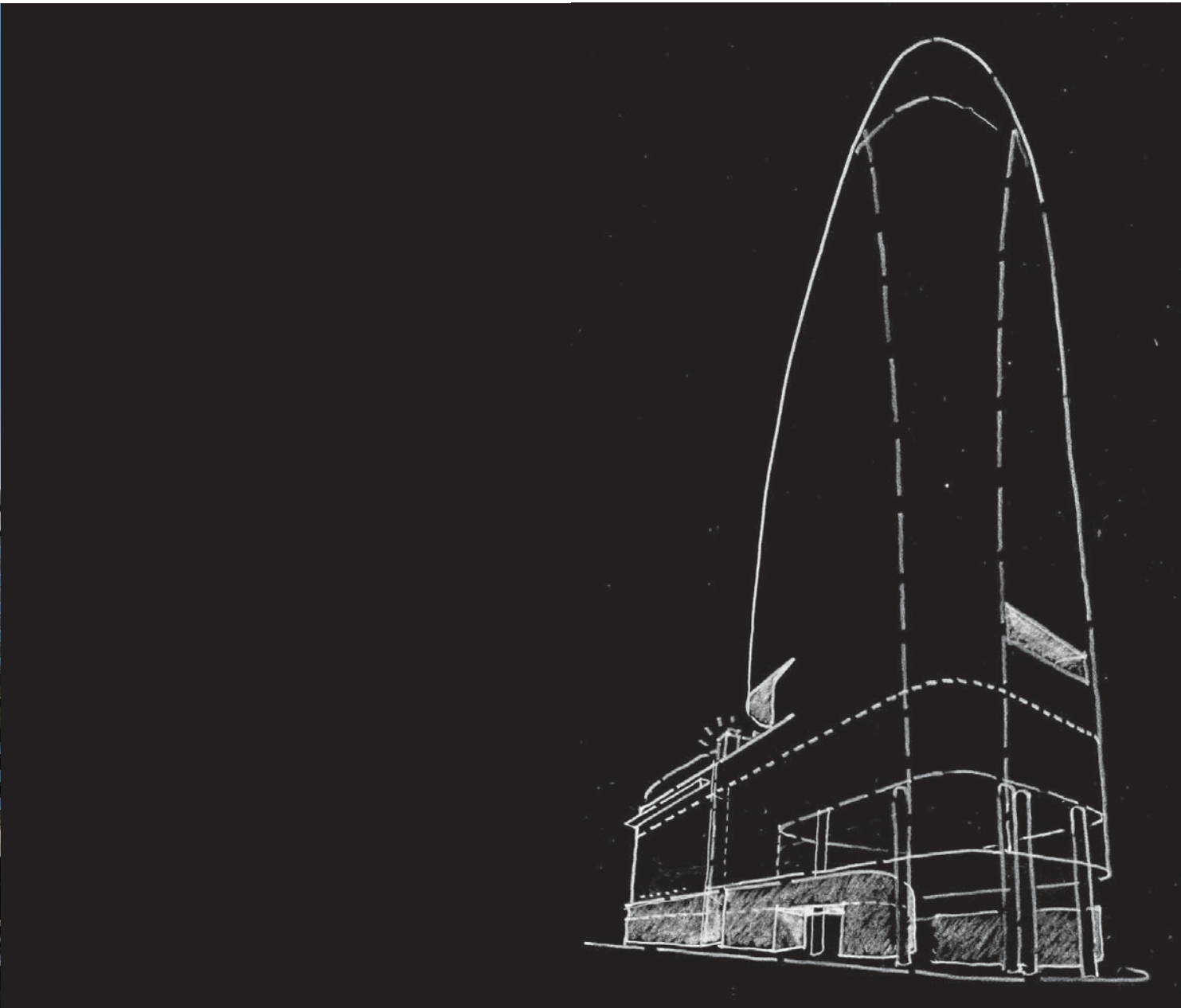
AXIS

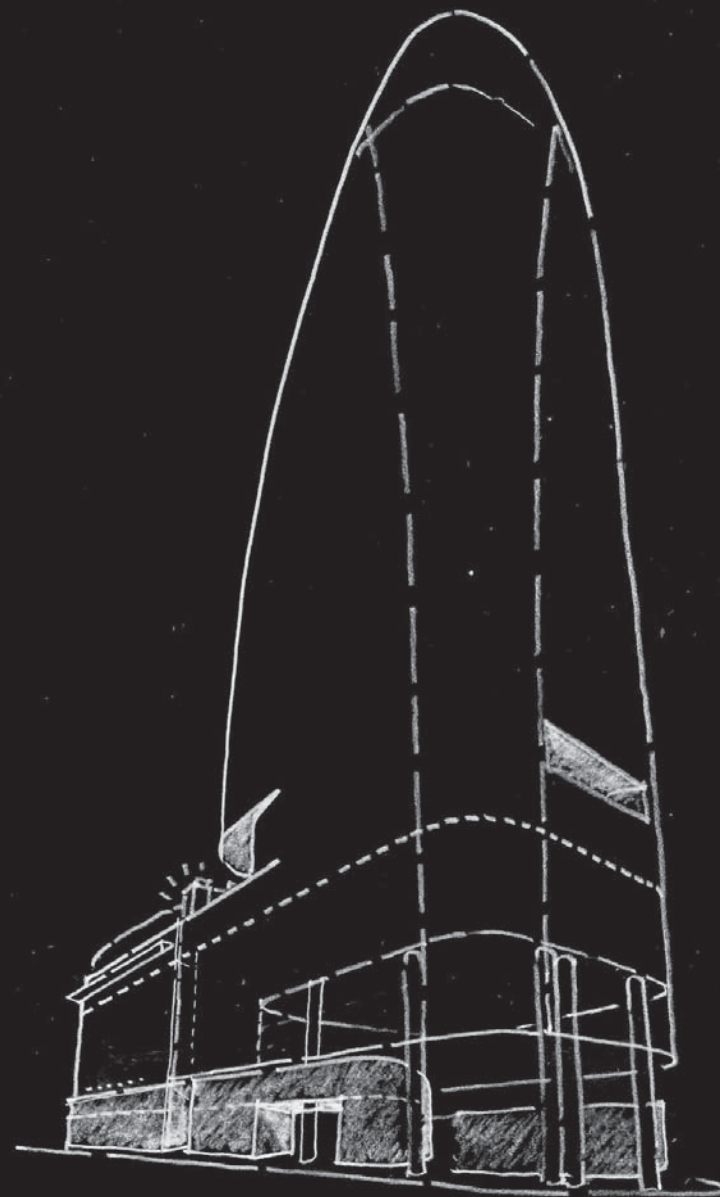
THE NORTH TOWER AS A SEPARATE ELEMENT
THAT RETAINS THE IDENTITY OF SDMP
AS A PALAZZO FORM WITHIN THE ELIZABETH
#CASTLEREAGH STREETSCAPES AND TO ALLOW
THE HISTORIC LIFT OVERUN TOWERS TO
BE VISUALLY UNDERSTOOD AS DETACHED FORMS.

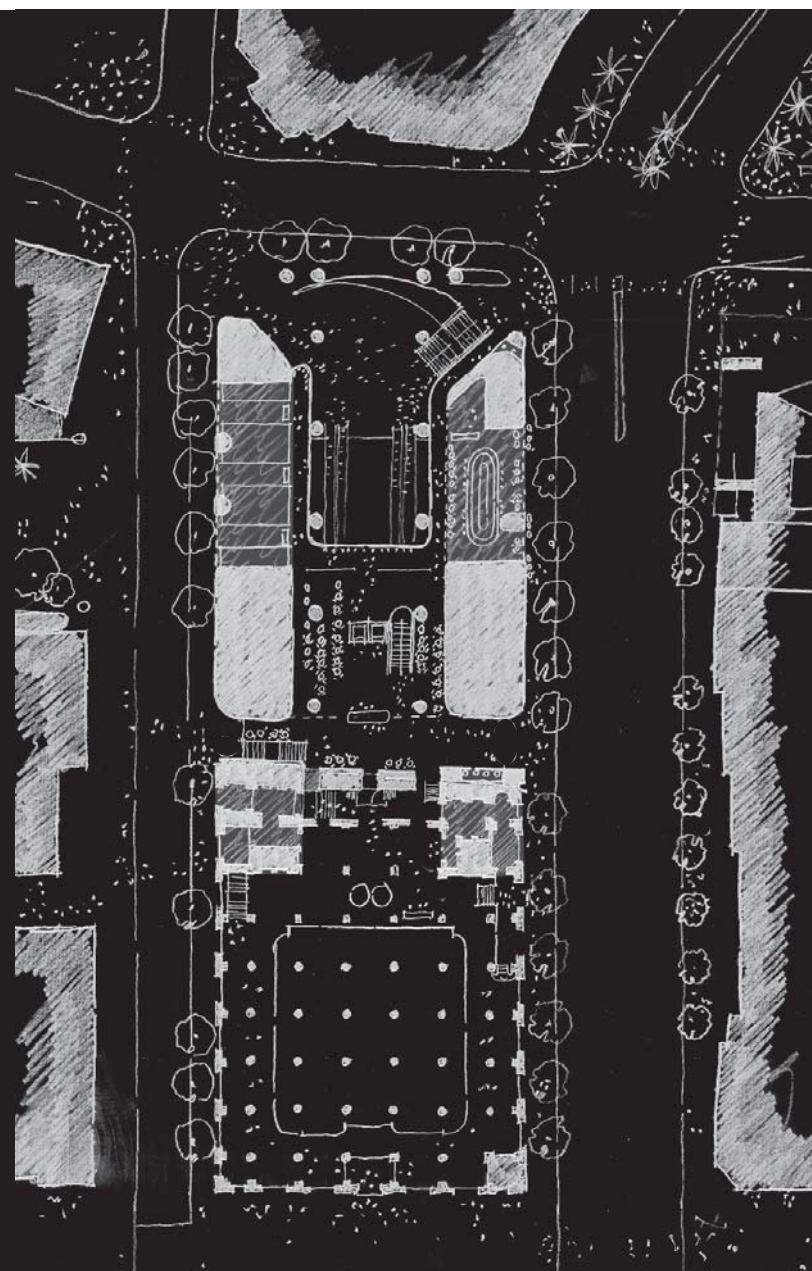
A BUILDING OF HIGHEST GLOBAL STANDARDS # DISTINCTION
UNIQUELY SHAPED TO ITS SYDNEY CONTEXT AND ARCHITECTURAL
EXCELLENCE OF SDMP

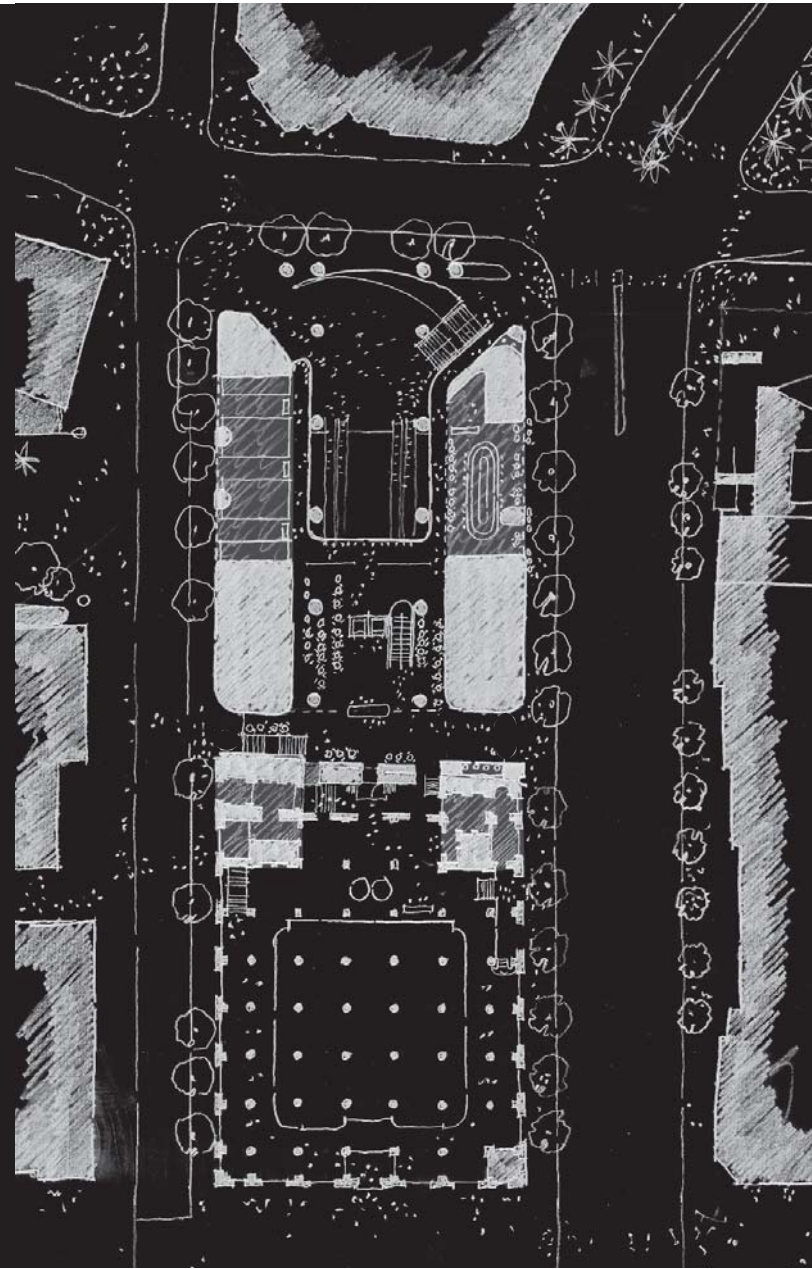
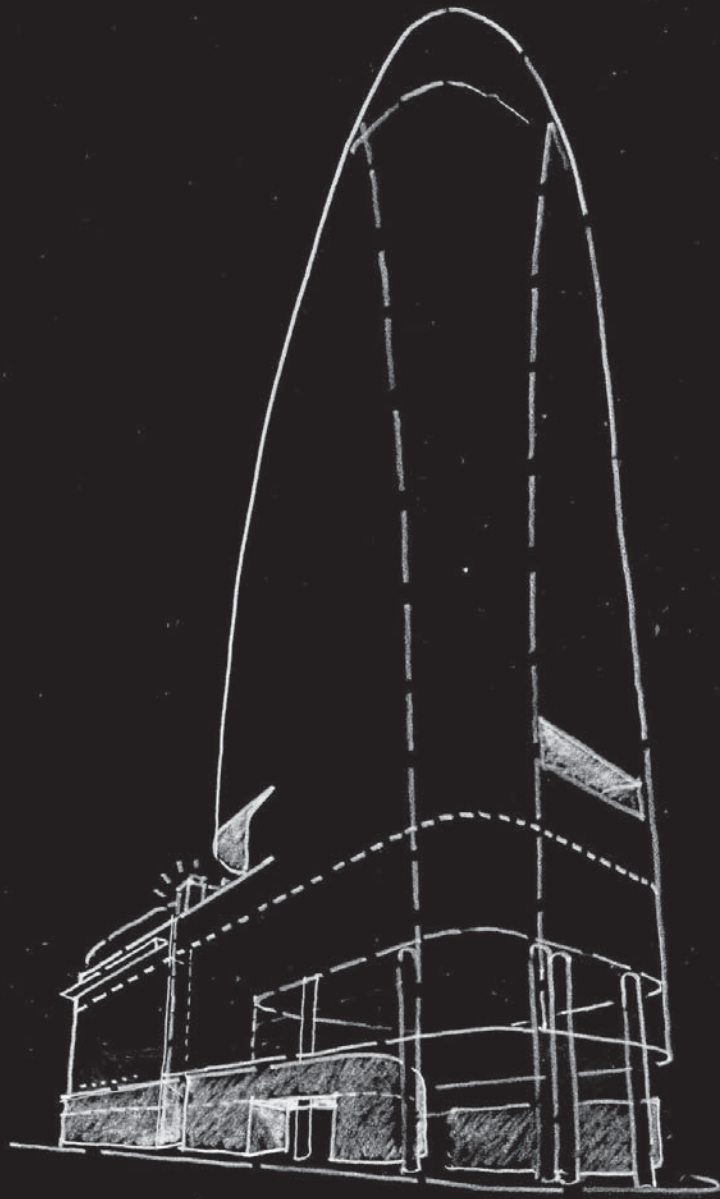












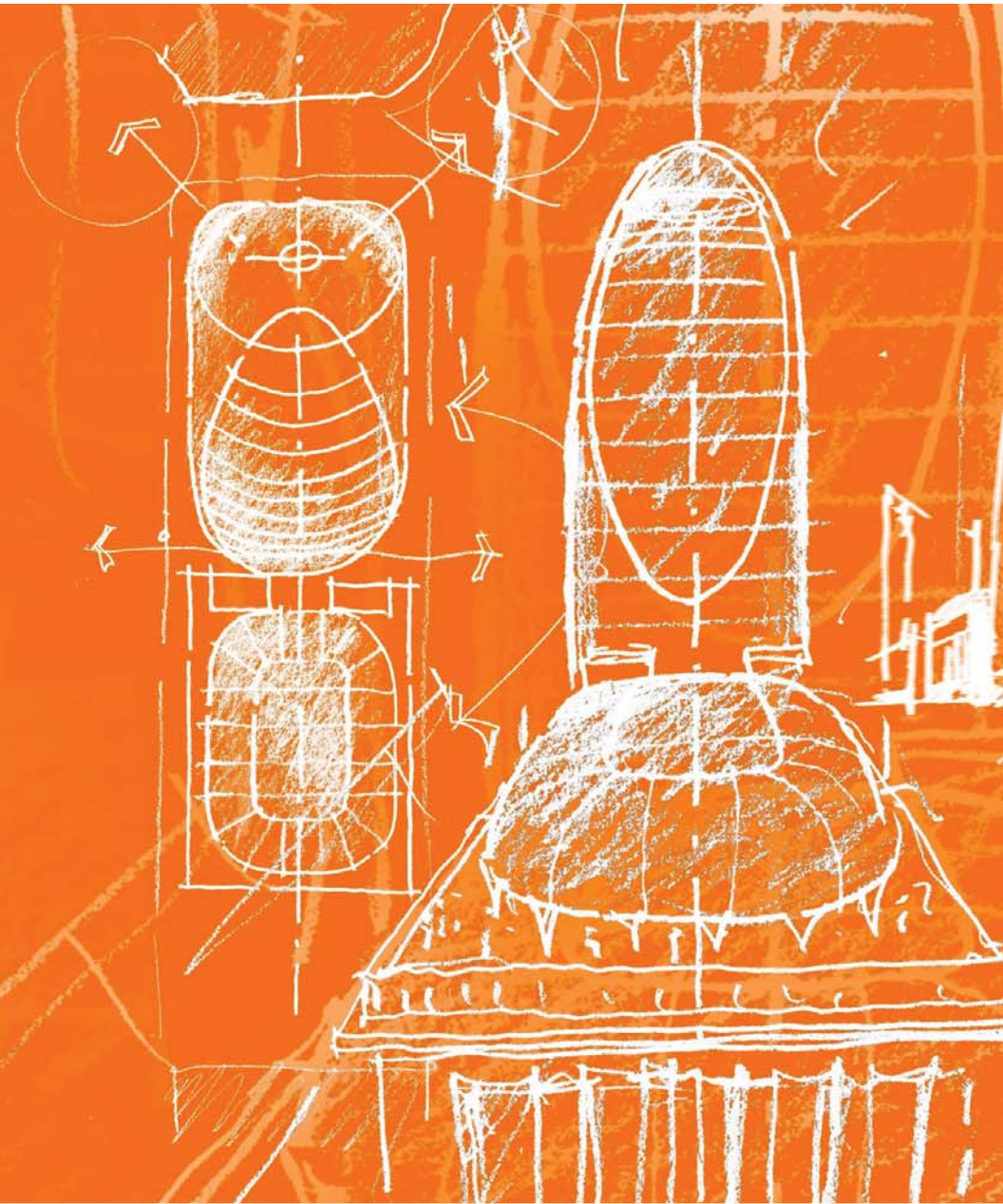




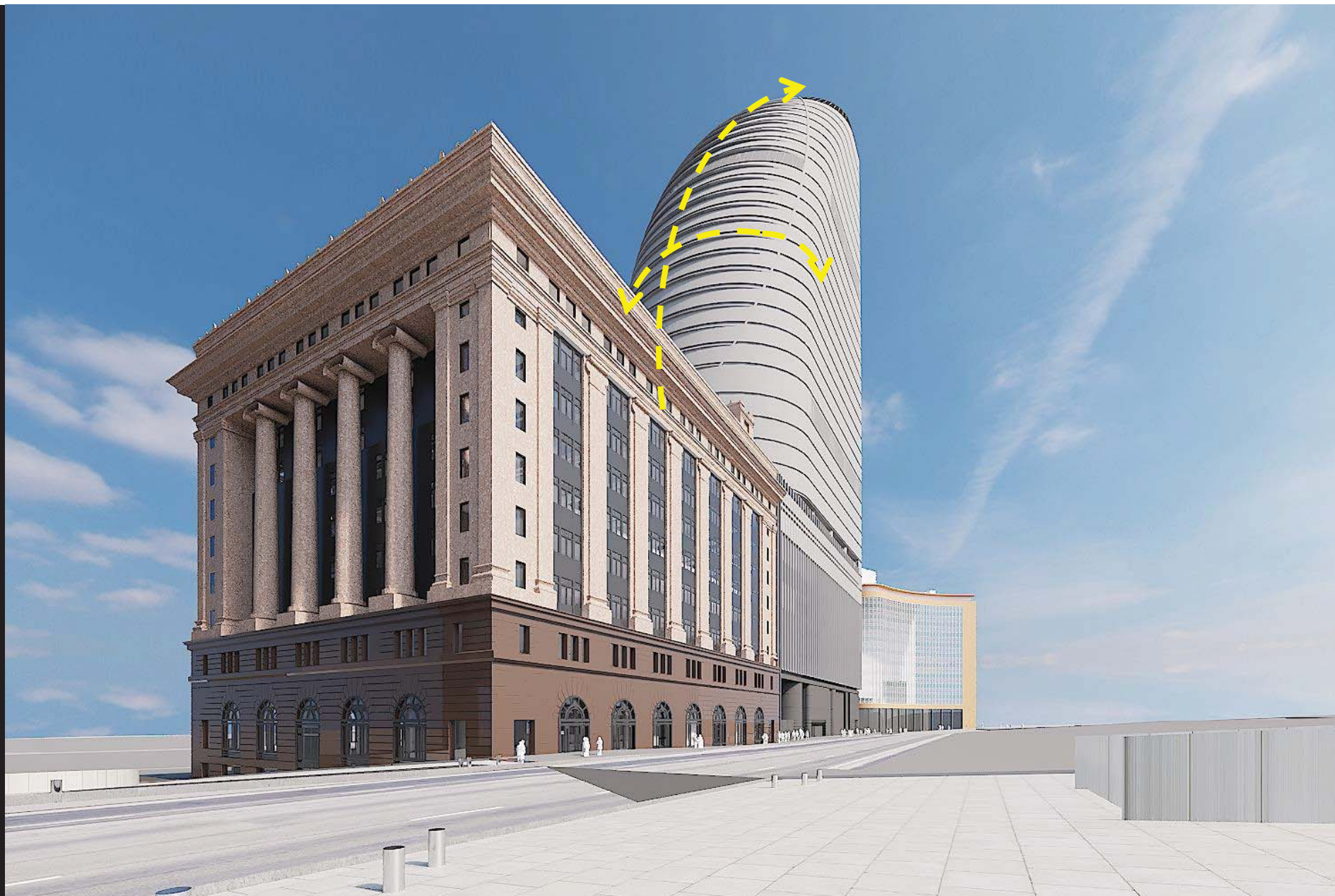
NORTH TOWER

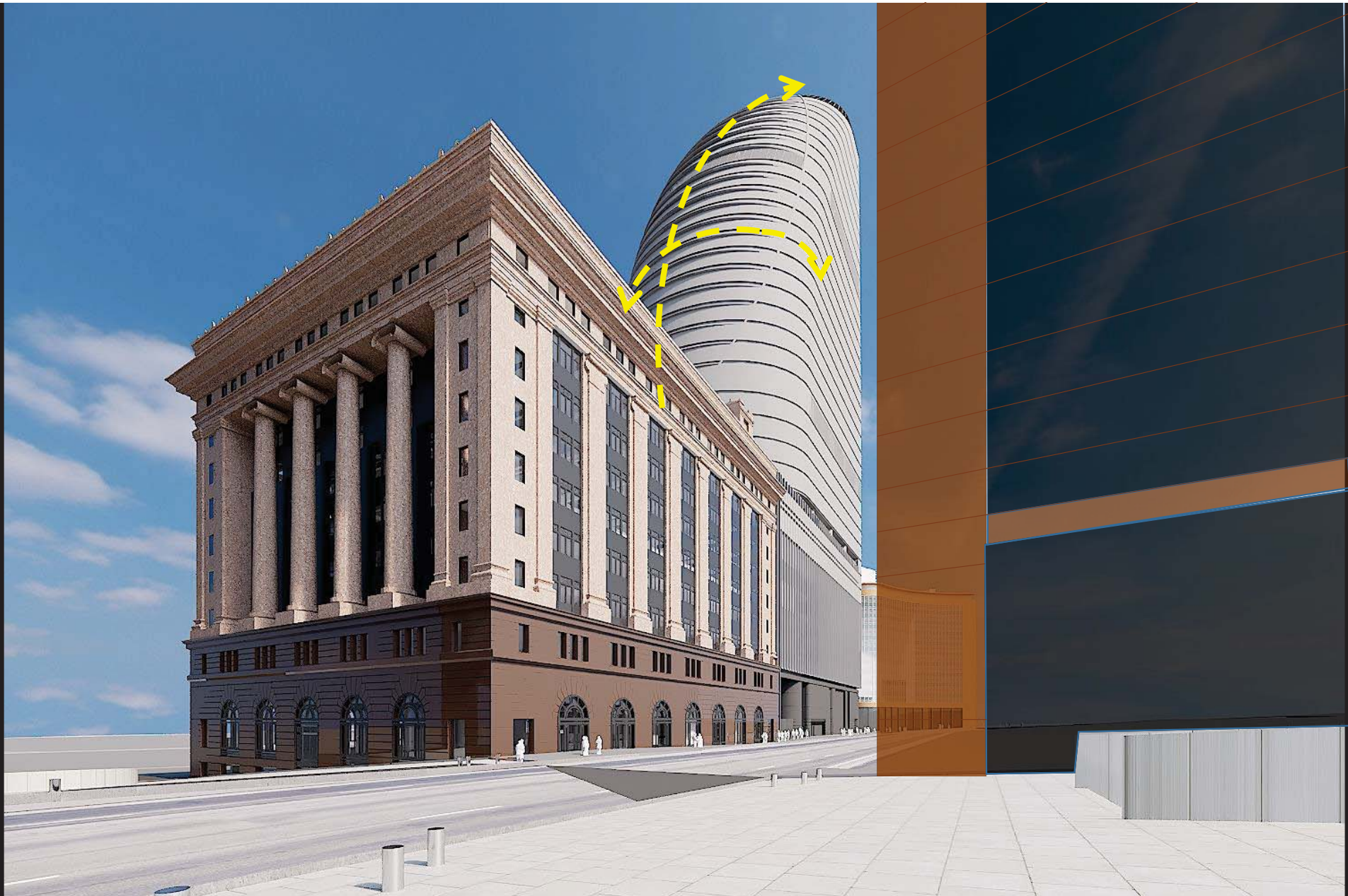
Development of Building Form

- Initial Studies
- Developed ideas – relationship to 50MP
- Translate into simplified form model













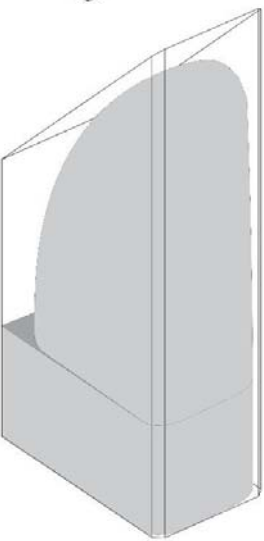
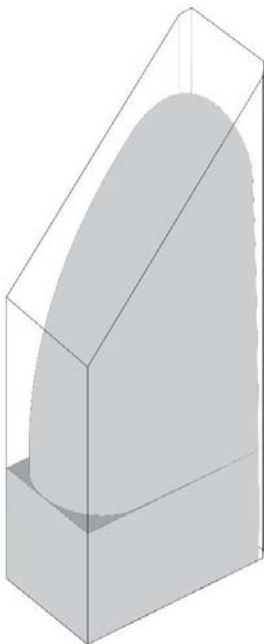
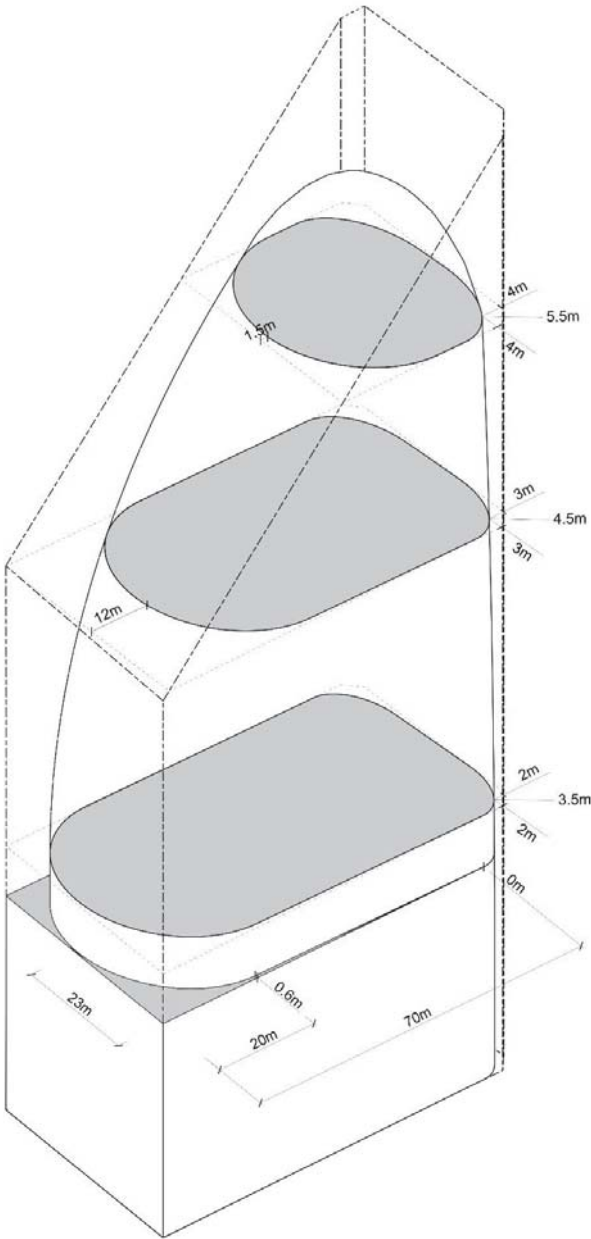
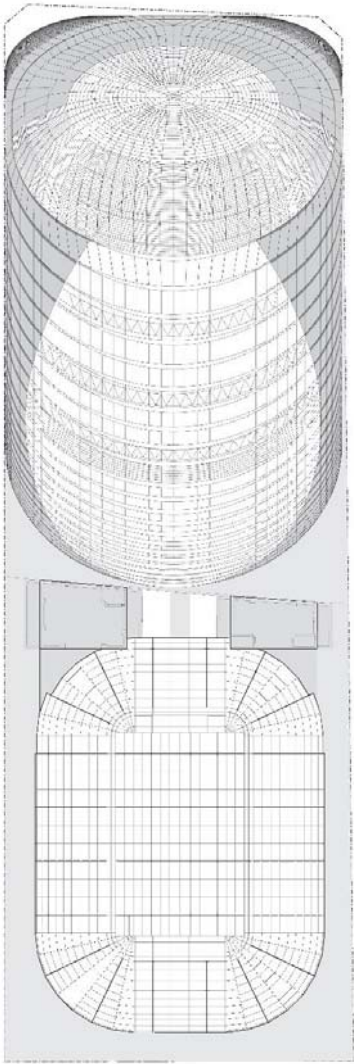








Proposed Setbacks





SSDA Design Guidelines

Singular Tower Form/Tower Setback

Ensure SSDA Max GFA is balanced with building forms that are proportionately elegant and exhibit appropriate façade articulation

Street wall expression and reference to scale of 50 MP

The facades are to respond to the articulation, principal streetwall height or other key datum lines of 50MP, former Qantas House and the reverse podium of 8 Chifley and Deutsche bank

A new building tower and podium/base is to sensitively integrate (towards and at its southern extent) with the low scale of 50 MP and clearly articulate its street wall height on Castlereagh and Elizabeth Streets

A considered transition between the North Tower and 50MP is required, with the southern elevation of the North Tower being sensitively integrated with the form of 50MP

Through Site Link

Wind impact for pedestrians

Zero setback for Hunter Street to align with towers to the east may be appropriate subject to achieving relevant public domain standards to use and activity

